

Project Number A-00712 (3700)

**Re-Inspection
Asbestos Survey Report**

**HMS Flying Fox
Winter stokes Road.
Bristol
BS3 2NS**



Working in Partnership with Shield Services Group



Document Name	Author	Issued by	Revision Number	Issue Date	Page No
2021	Will Fyles	Armour AS	0	10/05/2021	1



Contents

Section	
1	Contact Details
2	Executive Summary
3	Site Description & Survey Information
4	Positive, Presumed or No Access Items
5	Negative Photos Sheets
6	Survey Objectives
7	Survey Notes
8	Material Assessment Algorithm
9	Certificates of Bulk Analysis
10	Site Plan

Document Name	Author	Issued by	Revision Number	Issue Date	Page No
2021	Will Fyles	Armour AS	0	10/05/2021	2



Section 1: Contact Details

Client Details:		Instructing Party:	
Wessex RFCA Mount House Mount Street Taunton TA1 3QE		Shield Caxton Business Park Warmley BS30 8XJ	
Contact Name:	Kelvin Walker	Contact Name:	Chloe Smith
Tel: 01823 250116	Fax: N/A	Tel: 01173012650	Fax: N/A

Site Address:		Report Author:	
HMS Flying Fox Winter stokes Road. Bristol BS3 2NS		Armour Analytical Services Admirals Yard Station Road Bristol BS34 6LR	
Contact Name:	Kelvin Walker	Contact Name:	Emma Humphreys
Tel: 01823 250116	Fax: N/A	Mobile: 07468535836	

Lead Surveyor's Name:	Lead Surveyor's Authorising Signature:
Will Files	

Document Name	Author	Issued by	Revision Number	Issue Date	Page No
2021	Will Fyles	Armour AS	0	10/05/2021	3



Section 2: Executive Summary

Sample Number	Sample Type	Location	Analysis
WF/01	Floor - Vinyl Products	Ground Floor Main Building Armoury 019	N.A.D.I.S
WF/02	Floor - Vinyl Products	Ground Floor Main Building Armoury 020	N.A.D.I.S

N.A.D.I.S – No Asbestos Detected in Sample

In addition to the above sampled items, the following items have either been “Previously Sampled”, “Strongly Presumed” To Contain Asbestos or “Presumed” to Contain Asbestos as they were either visually identified in being so, labelled after previously being sampled on prior surveys or not accessible at the time of the survey:

Status	Sample Type	Location
Presumed	Electric Box - Gaskets (rope/woven)	Basement Main Building Basement Boiler Room 017
Previously Sampled	Floor - Vinyl Products	Ground Floor 6 Rifles Offices, Lobby & Corridor 002
Presumed	Electric Box - Gaskets (rope/woven)	Ground Floor 6 Rifles Bar Area 003
Presumed	Electric Box - Gaskets (rope/woven)	Ground Floor 6 Rifles Boiler Room (Small) 004
Previously Sampled	Floor - Vinyl Products	Ground Floor Sea Cadets Offices & Corridor 005
Presumed	Electric Box - Gaskets (rope/woven)	Ground Floor Fitness Suite 007
Strongly Presumed	Bitumen/Adhesive - Bituminous Product	Ground Floor Main Building Corridors & Hall 015
Strongly Presumed	Electric Box - Gaskets (rope/woven)	Ground Floor Main Building Main Entrance Electrical Cupboard 016
Previously Sampled	Floor - Vinyl Products	First Floor Main Building Corridors & Offices 014
Previously Sampled	Floor - Vinyl Products	Second Floor Main Building Corridors & Offices 013
Presumed	Roof Sheets - Cement Product	External RNR Storage 006
Strongly Presumed	Roof Sheets - Cement Product	External Lay apart Store 008
Strongly Presumed	Guttering - Cement Product	External Lay apart Store 009
Strongly Presumed	Roof Sheets - Cement Product	External Garage 010

Document Name	Author	Issued by	Revision Number	Issue Date	Page No
2021	Will Fyles	Armour AS	0	10/05/2021	4



Status	Sample Type	Location
Previously Sampled	Roof Panels - Cement Product	External Main Building Flat Roof 012
Previously Sampled	Floor - Vinyl Products	Main Building Corridors & Offices 013
Strongly Presumed	Pipework - Insulation	External Main Building Car Park 018

The presence of asbestos in these areas cannot be ascertained at this time. If any works are to be carried out in these areas in the future, then these works should be approached cautiously.

In accordance with current legislation, any suspect materials encountered in these areas are to be assumed to contain asbestos until proven otherwise. This will normally involve cessation of works in the affected area.

Document Name	Author	Issued by	Revision Number	Issue Date	Page No
2021	Will Fyles	Armour AS	0	10/05/2021	5

Section 3: Site Description & Survey Information

Brief description on the general building construction

MOD Reserve Centre and associated buildings

Caveat for no access areas

No access to live electrics

No access within floor ducts.

No access to Sea Cadets Offices on this visit but has been previously accessed

EXTERNAL MATERIALS

Roof Type	Large Pitched Roof, Flat
Roof Materials	Asbestos Cement, Roof Tiles
Soffits	Wooden
Fascia	Wooden
Walls	Brick, Block
Verge Under cloaking	N/A
Guttering	Plastic, Iron, Cement
Downpipes	Plastic, Iron
Window/Door frames	UPVC
Other Materials	N/A

INTERNAL MATERIALS

Loft Insulation	N/A
Roof Underlining	N/A
Ceilings	Plasterboard, Ceiling Tiles
Walls <i>Internal</i>	Plasterboard, Brick, Block
Floors	Carpet, Floor Tiles, Parquet
Doors/Frames	Timber, Metal
Pipework/Insulation	Modern, MMMF, Presumed Asbestos Lagging in Floor Ducts
Boxings	Timber
Boiler Make	Modern
Flue Pipes	Metal
Storage Heaters	N/A
Electrical Boxes/Machinery	Old & New Containing Asbestos
Ducting/Risers	N/A
Stairs	Concrete, Metal
Lift Shafts	N/A
Other Materials	N/A

Document Name	Author	Issued by	Revision Number	Issue Date	Page No
2021	Will Fyles	Armour AS	0	10/05/2021	6

Section 4: Positive, Presumed or No Access Items

Item No:	2	Sample No:	N/A
Location:	Ground Floor - 6 Rifles Offices, Lobby & Corridor 002		



Material Description:	Floor - Vinyl Products	
Identification:	Previously Sampled - Asbestos Detected	
Approx. quantity:	200 m ²	
Accessibility	Medium	Assessment Score
Product type:	Vinyl	1
Extent of Damage:	Moderate damage	2
Surface Treatment:	Non-friable	0
Asbestos type:	Chrysotile	1
Material Assessment Score:		4
Priority Assessment Score:		Negligible
Action:	Manage	
Comments:	Previously sampled as per samples 1 & 7 Under all carpets in 6 rifles offices & bar. White & Brown tiles throughout area of building.	

Document Name	Author	Issued by	Revision Number	Issue Date	Page No
2021	Will Fyles	Armour AS	0	10/05/2021	7

Item No: 3

Sample No: N/A

Location: Ground Floor - 6 Rifles Bar Area 003



Material Description:	Electric Box - Gaskets (rope/woven)	
Identification:	Presumed to Contain Asbestos	
Approx. quantity:	2 no	
Accessibility	Difficult	<i>Assessment Score</i>
Product type:	Rope	2
Extent of Damage:	Major damage	3
Surface Treatment:	Unsealed Insulation	3
Asbestos type:	Presumed	3
Material Assessment Score:		11
Priority Assessment Score:		High
Action:	Manage	
Comments:	Presumed Flashguards within live electrics. Unable to sample as Live	

Document Name	Author	Issued by	Revision Number	Issue Date	Page No
2021	Will Fyles	Armour AS	0	10/05/2021	8

Item No: 4

Sample No: N/A

Location: Ground Floor - 6 Rifles Boiler Room (Small) 004



Material Description:	Electric Box - Gaskets (rope/woven)	
Identification:	Presumed to Contain Asbestos	
Approx. quantity:	8 no	
Accessibility	Difficult	<i>Assessment Score</i>
Product type:	Rope	2
Extent of Damage:	Major damage	3
Surface Treatment:	Unsealed Insulation	3
Asbestos type:	Presumed	3
Material Assessment Score:		11
Priority Assessment Score:		High
Action:	Manage	
Comments:	Presumed Flashguards within live electrics. Unable to sample as Live	

Document Name	Author	Issued by	Revision Number	Issue Date	Page No
2021	Will Fyles	Armour AS	0	10/05/2021	9

Item No: 5

Sample No: N/A

Location: Ground Floor - Sea Cadets Offices & Corridor 005



Material Description:	Floor - Vinyl Products	
Identification:	Previously Sampled - Asbestos Detected	
Approx. quantity:	200 m ²	
Accessibility	Difficult	<i>Assessment Score</i>
Product type:	Vinyl	1
Extent of Damage:	Moderate damage	2
Surface Treatment:	Non-friable	0
Asbestos type:	Chrysotile	1
Material Assessment Score:		4
Priority Assessment Score:		Negligible
Action:	Manage	
Comments:	No access to this area as designated person was not on site but it is Previously sampled as per sample 1 & 7 by David Kelly and is under all carpets. Would suggest this remains same.	

Document Name	Author	Issued by	Revision Number	Issue Date	Page No
2021	Will Fyles	Armour AS	0	10/05/2021	10

Item No: 6

Sample No: N/A

Location: External - RNR Storage 006



Material Description:	Roof Sheets - Cement Product	
Identification:	Presumed to Contain Asbestos	
Approx. quantity:	20 m ²	
Accessibility	Medium	<i>Assessment Score</i>
Product type:	Cement	1
Extent of Damage:	Major damage	3
Surface Treatment:	Unsealed Insulation	3
Asbestos type:	Presumed	3
Material Assessment Score:		10
Priority Assessment Score:		High
Action:	Manage	
Comments:	Presumed to contain Asbestos	

Document Name	Author	Issued by	Revision Number	Issue Date	Page No
2021	Will Fyles	Armour AS	0	10/05/2021	11

Item No: 7 **Sample No:** N/A

Location: Ground Floor - Fitness Suite 007



Material Description:	Electric Box - Gaskets (rope/woven)	
Identification:	Presumed to Contain Asbestos	
Approx. quantity:	2 no	
Accessibility	Difficult	<i>Assessment Score</i>
Product type:	Rope	2
Extent of Damage:	Major damage	3
Surface Treatment:	Unsealed Insulation	3
Asbestos type:	Presumed	3
Material Assessment Score:		11
Priority Assessment Score:		High
Action:	Manage	
Comments:	Presumed to contain Asbestos. Rest of suite modernised. Unable to sample as Live	

Document Name	Author	Issued by	Revision Number	Issue Date	Page No
2021	Will Fyles	Armour AS	0	10/05/2021	12

Item No: 8 **Sample No:** N/A

Location: External - Lay apart Store 008



Material Description:	Roof Sheets - Cement Product	
Identification:	Strongly Presumed to Contain Asbestos	
Approx. quantity:	20 m ²	
Accessibility	Difficult	<i>Assessment Score</i>
Product type:	Cement	1
Extent of Damage:	Moderate damage	2
Surface Treatment:	Non-friable	0
Asbestos type:	Presumed	3
Material Assessment Score:		6
Priority Assessment Score:		Low
Action:	Manage	
Comments:	Strongly Presume to contain Asbestos. No access due to height	

Document Name	Author	Issued by	Revision Number	Issue Date	Page No
2021	Will Fyles	Armour AS	0	10/05/2021	13

Item No: 9

Sample No: N/A

Location: External - Lay apart Store 009



Material Description:	Guttering - Cement Product	
Identification:	Strongly Presumed to Contain Asbestos	
Approx. quantity:	20 LM	
Accessibility	Difficult	<i>Assessment Score</i>
Product type:	Cement	1
Extent of Damage:	Moderate damage	2
Surface Treatment:	Non-friable	0
Asbestos type:	Presumed	3
Material Assessment Score:		6
Priority Assessment Score:		Low
Action:	Encapsulate	
Comments:	Strongly presume to contain Asbestos. Encapsulate or Remove	

Document Name	Author	Issued by	Revision Number	Issue Date	Page No
2021	Will Fyles	Armour AS	0	10/05/2021	14

Item No: 10

Sample No: N/A

Location: External - Garage 010



Material Description:	Roof Sheets - Cement Product	
Identification:	Strongly Presumed to Contain Asbestos	
Approx. quantity:	20 m ²	
Accessibility	Difficult	<i>Assessment Score</i>
Product type:	Cement	1
Extent of Damage:	Moderate damage	2
Surface Treatment:	Non-friable	0
Asbestos type:	Presumed	3
Material Assessment Score:		6
Priority Assessment Score:		Low
Action:	Manage	
Comments:	Strongly presume to contain Asbestos	

Document Name	Author	Issued by	Revision Number	Issue Date	Page No
2021	Will Fyles	Armour AS	0	10/05/2021	15

Item No: 12

Sample No: N/A

Location: External - Main Building Flat Roof 012



Material Description:	Roof Panels - Cement Product	
Identification:	Previously Sampled - Asbestos Detected	
Approx. quantity:	600 m ²	
Accessibility	Difficult	<i>Assessment Score</i>
Product type:	Cement	1
Extent of Damage:	Moderate damage	2
Surface Treatment:	Non-friable	0
Asbestos type:	Chrysotile	1
Material Assessment Score:		4
Priority Assessment Score:		Negligible
Action:	Manage	
Comments:	Previously identified in 2018 survey by Fineline Environmental. The roof panels have now been sealed over but Asbestos still present.	

Document Name	Author	Issued by	Revision Number	Issue Date	Page No
2021	Will Fyles	Armour AS	0	10/05/2021	16

Item No: 13

Sample No: N/A

Location: First Floor - Main Building Corridors & Offices 013



Material Description:	Floor - Vinyl Products	
Identification:	Previously Sampled - Asbestos Detected	
Approx. quantity:	100 m ²	
Accessibility	Medium	<i>Assessment Score</i>
Product type:	Vinyl	1
Extent of Damage:	Moderate damage	2
Surface Treatment:	Non-friable	0
Asbestos type:	Chrysotile	1
Material Assessment Score:		4
Priority Assessment Score:		Negligible
Action:	Manage	
Comments:	<p>Previously sampled as per sample 1 + 7</p> <p>Under all carpets, white & brown tiles.</p> <p>INT instructor's office not carpeted will be in near future, no access to that room as door is locked</p>	

Document Name	Author	Issued by	Revision Number	Issue Date	Page No
2021	Will Fyles	Armour AS	0	10/05/2021	17

Item No: 14

Sample No: N/A

Location: First Floor - Main Building Corridors & Offices 014



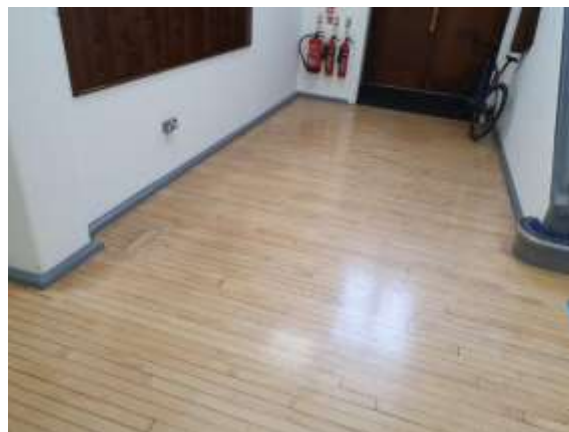
Material Description:	Floor - Vinyl Products	
Identification:	Previously Sampled - Asbestos Detected	
Approx. quantity:	300 m ²	
Accessibility	Medium	Assessment Score
Product type:	Vinyl	1
Extent of Damage:	Moderate damage	2
Surface Treatment:	Non-friable	0
Asbestos type:	Chrysotile	1
Material Assessment Score:		4
Priority Assessment Score:		Negligible
Action:	Manage	
Comments:	<p>Previously sampled as per sample 1</p> <p>Under all carpets, white & brown tiles.</p> <p>INT instructor's office not carpeted will be in near future, no access to that room as door is locked</p>	

Document Name	Author	Issued by	Revision Number	Issue Date	Page No
2021	Will Fyles	Armour AS	0	10/05/2021	18

Item No: 15

Sample No: N/A

Location: Ground Floor - Main Building Corridors & Hall 015



Material Description:	Bitumen/Adhesive - Bituminous Product	
Identification:	Strongly Presumed to Contain Asbestos	
Approx. quantity:	420 m ²	
Accessibility	Difficult	Assessment Score
Product type:		
Extent of Damage:	Good	0
Surface Treatment:	Non-friable	0
Asbestos type:	Presumed	3
Material Assessment Score:		3
Priority Assessment Score:		Negligible
Action:	Manage	
Comments:	Strongly presumed to contain Asbestos beneath Parquet flooring. Unable to sample without damaging flooring	

Document Name	Author	Issued by	Revision Number	Issue Date	Page No
2021	Will Fyles	Armour AS	0	10/05/2021	19

Item No: 16

Sample No: N/A

Location: Ground Floor - Main Building Main Entrance Electrical Cupboard 016



Material Description:	Electric Box - Gaskets (rope/woven)	
Identification:	Strongly Presumed to Contain Asbestos	
Approx. quantity:	2 no	
Accessibility	Difficult	Assessment Score
Product type:	Rope	2
Extent of Damage:	Good	0
Surface Treatment:	Woven Material	1
Asbestos type:	Presumed	3
Material Assessment Score:		6
Priority Assessment Score:		Low
Action:	Manage	
Comments:	Strongly presume to contain Asbestos. Unable to sample as Live	

Document Name	Author	Issued by	Revision Number	Issue Date	Page No
2021	Will Fyles	Armour AS	0	10/05/2021	20

Item No: 17

Sample No: N/A

Location: Basement - Main Building Basement Boiler Room 017



Material Description:	Electric Box - Gaskets (rope/woven)	
Identification:	Presumed to Contain Asbestos	
Approx. quantity:	4 no	
Accessibility	Difficult	<i>Assessment Score</i>
Product type:	Rope	2
Extent of Damage:	Major damage	3
Surface Treatment:	Unsealed Insulation	3
Asbestos type:	Presumed	3
Material Assessment Score:		11
Priority Assessment Score:		High
Action:	Manage	
Comments:	Presumed to contain Asbestos. Unable to sample as live.	

Document Name	Author	Issued by	Revision Number	Issue Date	Page No
2021	Will Fyles	Armour AS	0	10/05/2021	21

Item No: 18

Sample No: N/A

Location: External - Main Building Car Park 018



Material Description:	Pipework - Insulation	
Identification:	Strongly Presumed to Contain Asbestos	
Approx. quantity:	20 LM	
Accessibility	Difficult	<i>Assessment Score</i>
Product type:	Pipe Insulation	3
Extent of Damage:	Major damage	3
Surface Treatment:	Unsealed Pipe Lagging	3
Asbestos type:	Presumed	3
Material Assessment Score:		12
Priority Assessment Score:		High
Action:	Manage	
Comments:	<p>Strongly presume to contain Asbestos as identified in previous survey.</p> <p>Runs into 1st LT and COM Office on ground floor. Now under Tarmac so no access.</p>	

Document Name	Author	Issued by	Revision Number	Issue Date	Page No
2021	Will Fyles	Armour AS	0	10/05/2021	22

Section 5: Negative Items

Item No:	1	Sample No:	N/A
Location:	Ground Floor - 6 Rifles Armoury 001		



Material Description:	No Suspect Materials Found	
Identification:	N/A	
Approx. quantity:	N/A	
Accessibility	N/A	<i>Assessment Score</i>
Product type:	N/A	N/A
Extent of Damage:	N/A	N/A
Surface Treatment:	N/A	N/A
Asbestos type:	N/A	N/A
Material Assessment Score:		N/A
Priority Assessment Score:		N/A
Action:	N/A	
Comments:	Previously no accessed Armory, now accessed no ACM's present	

Document Name	Author	Issued by	Revision Number	Issue Date	Page No
2021	Will Fyles	Armour AS	0	10/05/2021	23

Item No: 11

Sample No: N/A

Location: Second Floor - Main Building 2nd Floor 011



Material Description:	No Suspect Materials Found	
Identification:	N/A	
Approx. quantity:	N/A	
Accessibility	N/A	<i>Assessment Score</i>
Product type:	N/A	N/A
Extent of Damage:	N/A	N/A
Surface Treatment:	N/A	N/A
Asbestos type:	N/A	N/A
Material Assessment Score:		N/A
Priority Assessment Score:		N/A
Action:	N/A	
Comments:	This item has been removed since previous survey.	

Document Name	Author	Issued by	Revision Number	Issue Date	Page No
2021	Will Fyles	Armour AS	0	10/05/2021	24

Item No: 19

Sample No: WF/01

Location: Ground Floor - Main Building Armoury 019



Material Description:	Floor - Vinyl Products	
Identification:	Sampled - No Asbestos Found	
Approx. quantity:	N/A	
Accessibility	N/A	<i>Assessment Score</i>
Product type:	N/A	N/A
Extent of Damage:	N/A	N/A
Surface Treatment:	N/A	N/A
Asbestos type:	N/A	N/A
Material Assessment Score:		N/A
Priority Assessment Score:		N/A
Action:	N/A	
Comments:	Sample taken of the red floor covering	

Document Name	Author	Issued by	Revision Number	Issue Date	Page No
2021	Will Fyles	Armour AS	0	10/05/2021	25

Item No: 20

Sample No: WF/02

Location: Ground Floor - Main Building Armoury 020



Material Description:	Floor - Vinyl Products	
Identification:	Sampled - No Asbestos Found	
Approx. quantity:	N/A	
Accessibility	N/A	<i>Assessment Score</i>
Product type:	N/A	N/A
Extent of Damage:	N/A	N/A
Surface Treatment:	N/A	N/A
Asbestos type:	N/A	N/A
Material Assessment Score:		N/A
Priority Assessment Score:		N/A
Action:	N/A	
Comments:	Sample taken of the Beige floor covering	

Document Name	Author	Issued by	Revision Number	Issue Date	Page No
2021	Will Fyles	Armour AS	0	10/05/2021	26



Section 6: Survey Objectives

Instructions were received from Kelvin Walker of Wessex RFCA to carry out a Re-Inspection asbestos survey at HMS Flying Fox, Winter stoke Road, Bristol, BS3 2NS in accordance with HSG264 and Armour Analytical's quality procedures.

The survey was carried out on 28 April 2021 by Will Fyles with the objective of facilitating a Re-Inspection report.

Document Name	Author	Issued by	Revision Number	Issue Date	Page No
2021	Will Fyles	Armour AS	0	10/05/2021	27



Section 7: Survey Notes

This report has been written with reference to the various Guidance Notes etc, issued, and current at the date of this report and describes circumstances at the site on the date the investigation took place.

Where similar items exist in the building, only one or two samples may have been taken to ascertain the material content. It was assumed that similar products were of the same material.

Any person undertaking work within the buildings should be told of the presence of asbestos. This briefing also applies to any other person associated with the site, including staff, sub-contractors, and others.

The drawings in the report are not to scale and are illustrative only to indicate approximate locations. The descriptions used are for location identification purposes.

All the recommendations described in this report are based upon assumptions made after consideration of the type of material, condition of the material, its location, analysis result and type of use the area is thought to be subjected to. However, statutory authorities or others could require amendments based on local knowledge, change in legislation, change in use or indeed other conditions or criteria.

Samples taken from floor tiles (or similar material) may include a bitumen adhesive as part of the sample. It is known that some proprietary brands of bitumen have an asbestos content, and this will be included as an integral part of the bulk sample unless otherwise stated.

Due to the artex being non-homogenous, it is recommended to treat all areas as containing asbestos if you have a positive sample of artex.

Document Name	Author	Issued by	Revision Number	Issue Date	Page No
2021	Will Fyles	Armour AS	0	10/05/2021	28

Section 8: Material Assessment Algorithm

Variable	Score	Examples
Product type	1	Vinyl, 'Bakelite', Cement, Textured Coating, Non-Friable Debris, Floor Tiles, Bitumen, Reinforced Plastics, Mastic (putty), Windowsills
	2	Asbestos Insulating Board, Paper, Rope, Burned Cement Debris, Flashguards, Gaskets
	3	Pipe Insulation, Spray Coating, Friable Debris, Loose Fill Asbestos
Condition / Damage	0	Good
	1	Slight / Minor Damage
	2	Moderate Damage – Breakage to Surface Treatment
	3	Major Damage – Smashed or Exposed Material
Surface Treatment	0	Non-Friable E.G. Vinyl
	1	Enclosed Insulation, Encapsulated AIB, Unsealed Cement, Woven Material, Paper
	2	Unsealed AIB, Encapsulated Insulation, Encapsulated Pipe Lagging
	3	Unsealed Insulation, Spray Coating, Unsealed Pipe Lagging
Asbestos Type	1	Chrysotile
	2	Amosite & Other Amphiboles
	3	Crocidolite

The scores from each of the four sections are added together to produce a risk score:

Risk score	Risk assessment
10 or more	High risk
7 – 9	Medium risk
5 – 6	Low risk
4 & below	Negligible risk

Section 9: Certificates of Bulk Analysis



Our Ref: J208159 FL 2
Your Ref: 3700
Date: 30/04/2021

ENVIROCHEM
Analytical Laboratories Ltd.
12 The Gardens
Broadcut, Fareham
Hampshire
PO16 8SS



Tel: (01329) 287777
Fax: (01329) 287755
www.envirochem.co.uk
office@envirochem.co.uk

Asbestos Fibre Identification Report

Client: Armour Analytical Services Ltd
Admirals Yard, Station Road, Patchway, Bristol, BS34 6LR
Site Address: H M S Flying Fox, Winterstoke Road, Bristol, BS3 2NS
Sampled By: Armour Analytical Services Ltd
Date sampled/received: 29th April 2021
Date analysed: 30th April 2021
Analyst/s: Ella Hiron
Analysis Location: 12 The Gardens, Broadcut, Fareham, Hampshire, PO16 8SS

ANALYTICAL PROCEDURE

Fibre identification was carried out in accordance with the documented 'in-house' method (2.01) based on the HSE Guidance Note HSG 248. These employed stereo microscopy, polarized microscopy and dispersion staining techniques.

RESULTS

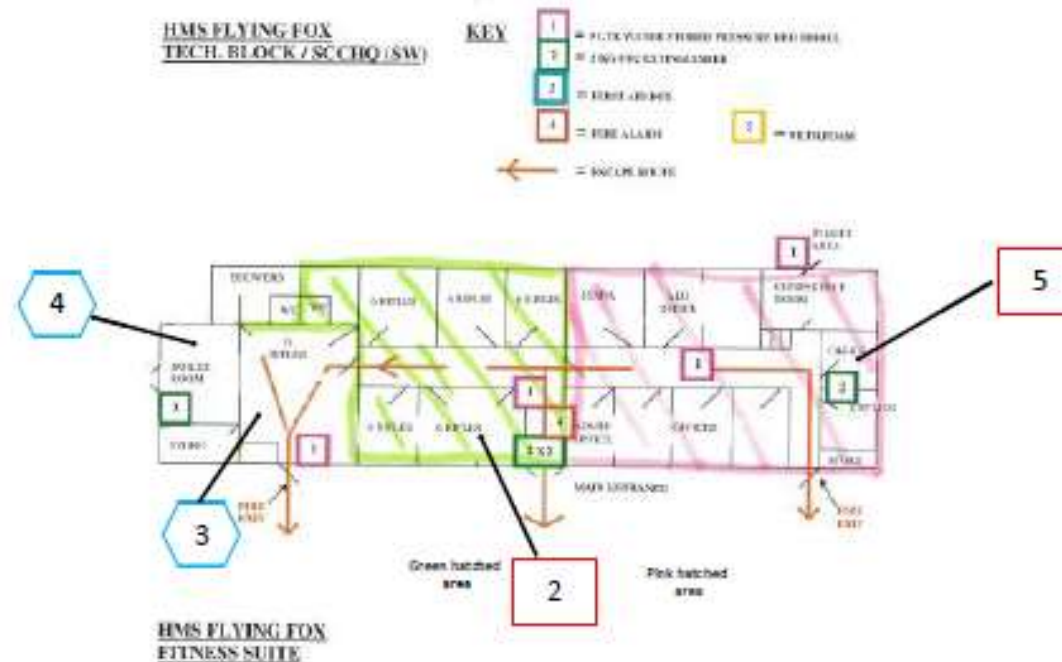
Sample No.	Sample Ref.	Location	Asbestos Detected	Asbestos Type
WF001	BS673086	Main building. Armoury. Vinyl floor tile	No	
WF002	BS673087	Main building. Armoury. Vinyl floor tile	No	

NOTES:
1. Samples were analysed for the presence of 6 types of asbestos fibres: crocidolite (blue), amosite (brown), chrysotile (white), anthophyllite, actinolite and tremolite.
2. The results shown in this report specifically refer to the samples tested as received unless otherwise stated and samples collected by the client are evaluated using information provided by the client. For samples collected by the client the date of receipt is deemed to be the same as the date sampled.
3. Envirochem is a UKAS accredited laboratory for sampling and identification of asbestos containing materials.
4. Comments, observations and opinions are outside the scope of UKAS accreditation.
5. The analytical method in the HSG248 does not quantify the amount of asbestos present, therefore UKAS accreditation does not permit quantification.
6. If, during fibre identification, only 1 or 2 fibres are seen and identified as asbestos, then the term 'trace asbestos identified' is used.
7. This report shall not be reproduced except in full, without written approval of Envirochem.

SIGNATURE:  Authorised signatory PRINT NAME: Ella Hiron
Reg. No. 2378228 England. Registered Office: Envirochem, 12 The Gardens, Broadcut, Fareham, Hampshire, PO16 8SS.
Page 1 of 1

Document Name	Author	Issued by	Revision Number	Issue Date	Page No
2021	Will Fyles	Armour AS	0	10/05/2021	30

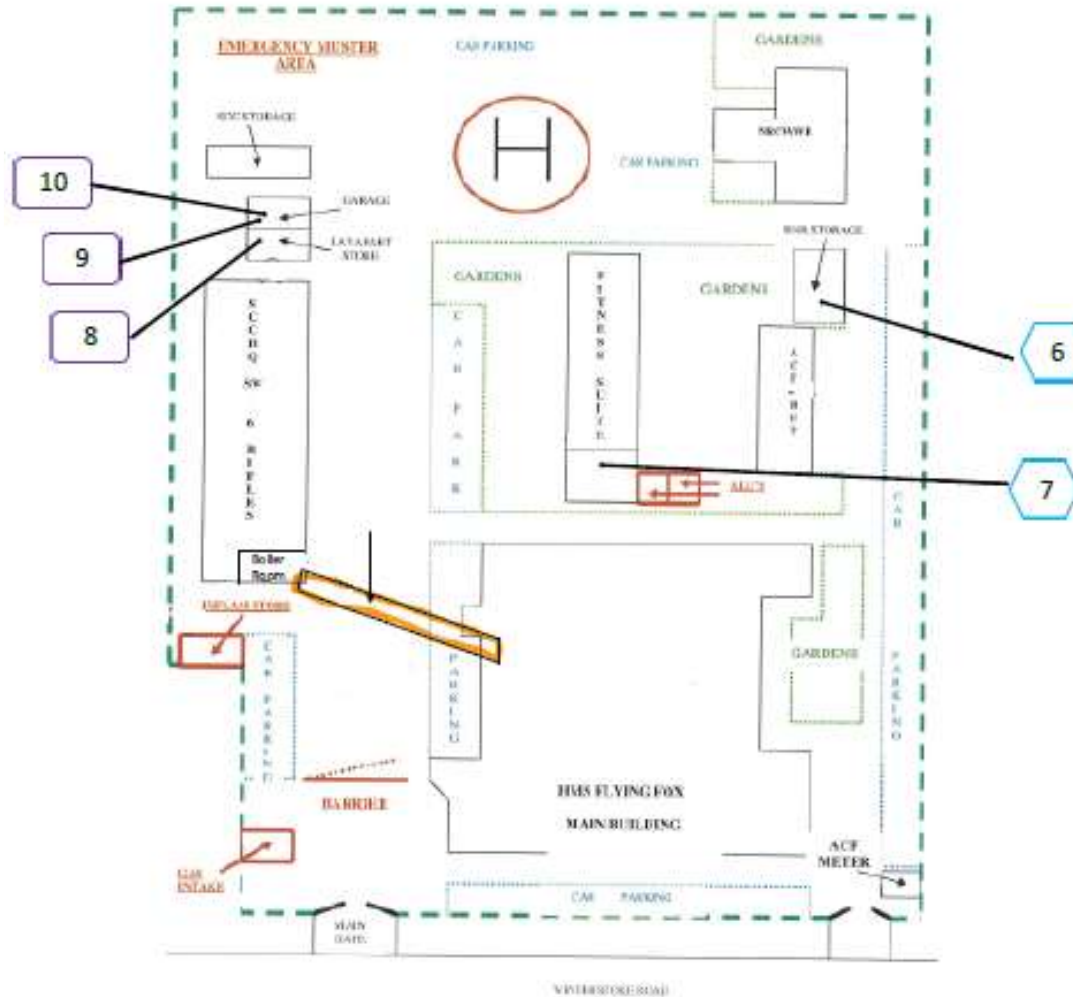
Section 10: Site Plan



Key	
	Visual Inspection
	Asbestos Detected (Positive Item)
	No Asbestos Detected (Negative Item)
	Presumed to Contain Asbestos
	Strongly Presumed to Contain Asbestos
	No Access

Document Name	Author	Issued by	Revision Number	Issue Date	Page No.
2021	Will Fyles	Armour AS	0	10/05/2021	31

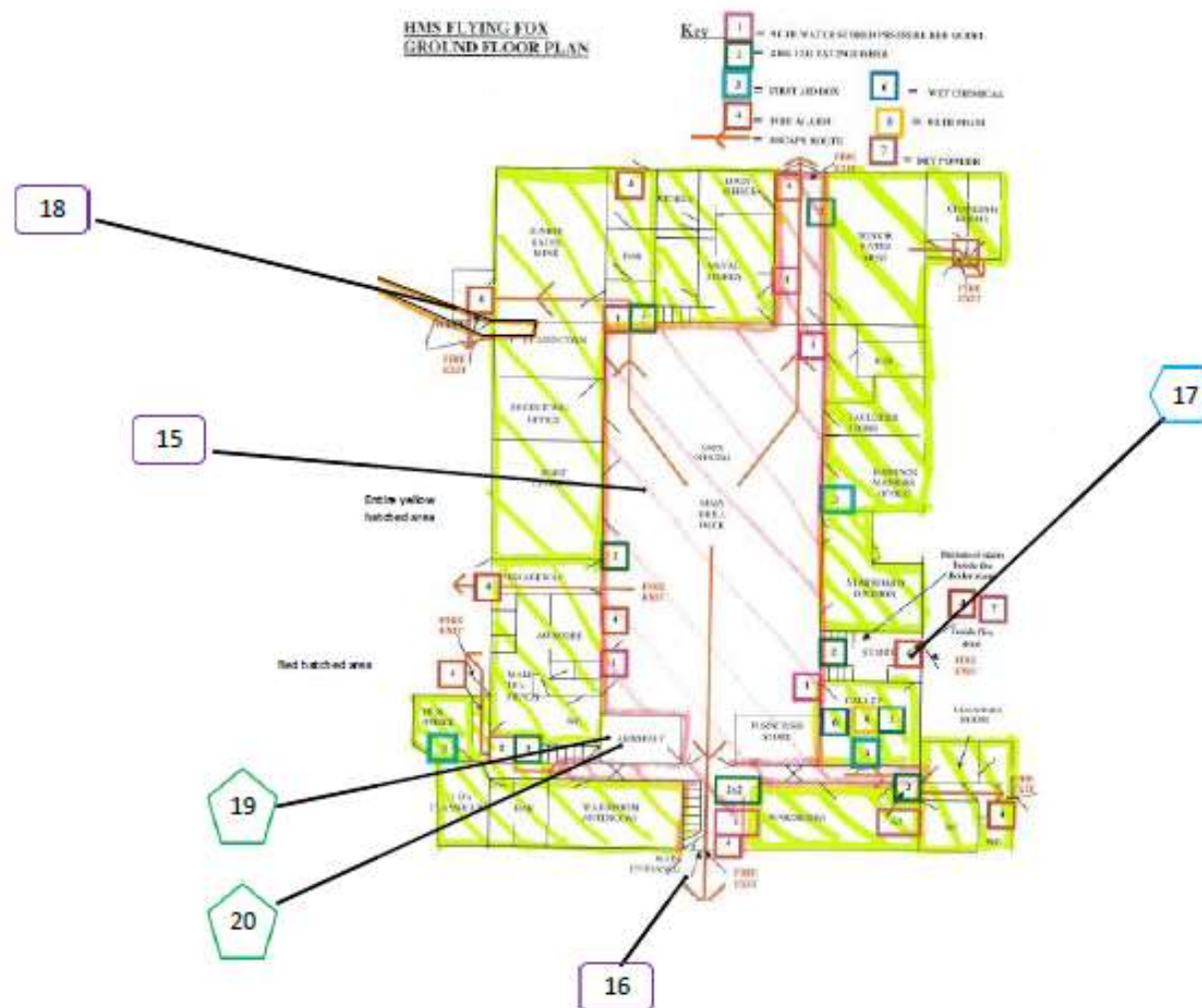
HMS FLYING FOX SITE PLAN



Key	
	Visual Inspection
	Asbestos Detected (Positive Item)
	No Asbestos Detected (Negative Item)
	Presumed to Contain Asbestos
	Strongly Presumed to Contain Asbestos
	No Access

Document Name	Author	Issued by	Revision Number	Issue Date	Page No.
2021	Will Fyles	Armour AS	0	10/05/2021	32

HMS FLYING FOX SITE PLAN



Key	
	Visual Inspection
	Asbestos Detected (Positive Item)
	No Asbestos Detected (Negative Item)
	Presumed to Contain Asbestos
	Strongly Presumed to Contain Asbestos
	No Access

Document Name	Author	Issued by	Revision Number	Issue Date	Page No.
2021	Will Fyles	Armour AS	0	10/05/2021	35



I the surveyor can confirm that this report is accurate to my findings onsite and this survey has been Content checked by myself.

Checked by: Will Fyles

Date: 10/05/21

I the Admin Manager can confirm that this report is accurate to the paperwork received and this survey has been quality checked by myself.

Checked by: Kacey Lillis

Date: 10/05/21

Report Compiled By

Armour Analytical Services Ltd, Admirals Yard, Station Road, Bristol, BS34 6LR

Document Name	Author	Issued by	Revision Number	Issue Date	Page No
2021	Will Fyles	Armour AS	0	10/05/2021	36