



ARMOUR
ANALYTICAL SERVICES

Project Number 2481

**Management
Asbestos Survey Report**

**7th Battalion, The Rifles C, Dorset,
BH12 5AD**



Working in Partnership with Shield Services Group

 **Shield** Celebrating our 40th year



Document Name	Author	Issued by	Revision Number	Issue Date	Page No
2019	Alishia Lewis	Armour AS	0	04/12/2019	1

Contents

Section	
1	Contacts & Authorisation
2	Executive Summary
3	Site Description & Survey Information
4	Positive and Presumed Photos Sheets
5	Negative Photos Sheets
6	Survey Objectives
7	Survey Techniques
8	Survey Caveat
9	Survey Notes
10	Material Assessment Algorithm
11	Certificates of Bulk Analysis
12	Site Plan

Document Name	Author	Issued by	Revision Number	Issue Date	Page No
2019	Alishia Lewis	Armour AS	0	04/12/2019	2



Section 1: Contact Details

Client Details:		Instructing Party:	
Wessex RFCA Mount House Mount Street Taunton TA1 3QE		Shield Environmental Shield House Caxton Business Park Crown Way Bristol BS30 8XJ	
Contact Name:	Sue Morrell	Contact Name:	Chloe Smith
Tel: 01823250115	Fax: N/A	Tel: 01173012650	Fax: N/A

Site Address:		Report Author:	
7 th Battalion The Rifles C Dorset BH12 5AD		Armour Analytical Services Admirals Yard Station Road Bristol BS34 6LR	
Contact Name:	Jon Nichols	Contact Name:	Emma Humphreys
Tel: 07401379307	Fax: N/A	Mobile: 07468535836	

Lead Surveyor's Name:	Lead Surveyor's Authorising Signature:
D. Kelly	

Document Name	Author	Issued by	Revision Number	Issue Date	Page No
2019	Alishia Lewis	Armour AS	0	04/12/2019	3

Section 2: Executive Summary

Sample Number	Sample Type	Location	Analysis
DK/1	Insulating Board Wall Panels	Main Building Lobby 0.01	N.A.D.I.S
DK/2	Floor Tiles and Adhesive	Main Building Offices 00.2 and 0.03	Chrysotile
DK/3	Bitumen Under Parquet Flooring	Main Building Drill Hall 0.37	N.A.D.I.S
DK/4	Floor Tile and Adhesive	Main Building – Ladies WC 0.14	N.A.D.I.S
DK/5	Floor Tiles and Adhesive	Main Building Lobby 0.12	Chrysotile
DK/6	Sink Pad	Main Building Boiler Room and Store 0.17 and 0.18	N.A.D.I.S
DK/7	Gaskets	Main Building Boiler Room B.01	N.A.D.I.S
DK/8	Texture Coating to Ceiling	Main Building Bar 0.22	N.A.D.I.S
DK/9	Floor Tiles and Adhesive	Main Building Store 0.36	Chrysotile
DK/10	Sink Pad	Main Building Store 0.36	Chrysotile
DK/11	Textured Coating to Ceiling	Main Building Store 0.36	N.A.D.I.S
DK/12	Floor Tiles and Adhesive	Main Building Rooms 1.20, 1.21, 1.22 and 1.24	Chrysotile
DK/13	Textured Coating to Ceiling	Main Building Office 1.23	N.A.D.I.S
DK/14	Textured Coating to Ceiling	Main Building Office 1.24	N.A.D.I.S
DK/15	Cement Wall and Door Header Panels	Main Building Office 1.25	N.A.D.I.S
DK/16	Floor Tiles and Adhesive	Main Building Corridor 1.27	Chrysotile
DK/17	Cement Downpipe	Building 7 External	Chrysotile
DK/18	Bitumen Damp Proof Course	Building 4	Chrysotile

N.A.D.I.S – No Asbestos Detected in Sample

A.D – Asbestos Detected

Document Name	Author	Issued by	Revision Number	Issue Date	Page No
2019	Alishia Lewis	Armour AS	0	04/12/2019	4

In addition to the above sampled items, the following items have been either been "Strongly Presumed" To Contain Asbestos or "Presumed" to Contain Asbestos as they were either visually identified in being so, labelled after previously being sampled on prior surveys or not accessible at the time of the survey:

- Item 3 – Ground Floor – Main Block – Office 0.02 – No Access within Safe Casings
- Item 7 – Ground Floor – Main Building – Classroom 0.08 – No Access within Safe Casings
- Item 11 – Ground Floor – Main Building – Drill Hall 0.37 – Rope Seals to Skylight – No Access to Sample Due to Height
- Item 12 – Ground Floor – Main Building – Electric Cupboard 0.05 – No Access within live Electrical Panels
- Item 24 – Ground Floor – Main Building – Ammo Store and Armoury 0.29, 0.30 and 0.31 - No Access as Rooms Locked
- Item 25 – Ground Floor – Main Building – Under Stairs Cupboard 0.07 – No Access as Key Lost
- Item 31 – Ground Floor – Main Building – Armoury 0.34 – No Access as Room Locked
- Item 36 – First Floor – Main Building – Store 1.15 – Cement Pipe Running through Ceiling – No Access to Sample due to Stored Items
- Item 47 – First Floor – Main Building – Room 1.26 – No Access No Key Available
- Item 50 – First Floor – Main Building – Rooms 1.28, 1.31 and 1.34 – No Access as No Key Available
- Item 54 – Main Building External – Cement Flue Pipe – No Access Due to Height
- Item 57 – Building 7 – Garage – Profiled Cement Roof – No Access Due to Height
- Item 61 – Building 4 – Garage and Open Garage – Profiled Cement Roof – No Access Due to Height
- Item 64 – Building 4 – External – Cement Roof Edging – No Access Due to Height
- Item 67 – Building 4 – WC and Stores – Toilet Seats – No Access to Sample as it May Damage Seats
- Item 70 – Caretakers House/Garage – No Access possible on request of occupant

The presence of asbestos in these areas cannot be ascertained at this time. If any works are to be carried out in these areas in the future, then these works should be approached cautiously.

In accordance with current legislation, any suspect materials encountered in these areas are to be assumed to contain asbestos until proven otherwise. This will normally involve cessation of works in the affected area.

Document Name	Author	Issued by	Revision Number	Issue Date	Page No
2019	Alishia Lewis	Armour AS	0	04/12/2019	5



Section 3: Site Description & Survey Information

Brief description on the general building construction

Main Building – Brick Construction with a Pitched Tiled Roof, Built Circa 1953
Garages – Concrete Frame with Asbestos Cement Roofs

Caveat for no access areas

No Access to Several Rooms as No Keys Were Available
No Access within Caretakers House on Request of the Caretaker

EXTERNAL MATERIALS

Roof Type	Pitched
Roof Materials	Ceramic Tiles, Profiled Cement
Soffits	UPVC
Fascia	Timber
Walls	Brick, Metal
Verge Under cloaking	N/A
Guttering	Plastic/Metal, Cement
Downpipes	Plastic/Metal, Cement
Window/Door frames	UPVC, Aluminum
Other Materials	N/A

INTERNAL MATERIALS

Loft Insulation	Fibreglass
Roof Underlining	Non-Asbestos Felt
Ceilings	Plasterboard, Concrete
Walls <i>Internal</i>	Plasterboard, Brick, Cement
Floors	Tiles, Lino, Screed, Carpet
Doors/Frames	Timber
Pipework/Insulation	MMMF, Foam
Boxings	Timber
Boiler Make	Non-Asbestos Boiler
Flue Pipes	Metal
Storage Heaters	Non-Asbestos Heaters
Electrical Boxes/Machinery	No Access
Ducting/Risers	Metal
Stairs	Screed
Lift Shafts	N/A
Other Materials	N/A

Document Name	Author	Issued by	Revision Number	Issue Date	Page No
2019	Alishia Lewis	Armour AS	0	04/12/2019	6



Section 4: Positive and Presumed Photos Sheets

Item No: 2

Sample No: DK/2

Location: Main Block - Ground Floor – Offices 0.02 and 0.03



Material Description:	Floor Tiles and Adhesive	
Identification:	Sampled – Asbestos Detected	
Approx. quantity:	32M2	
Accessibility	Low	<i>Assessment Score</i>
Product type:	Composite	1
Extent of Damage:	Minor	1
Surface Treatment:	Non-Friable	0
Asbestos type:	Chrysotile	1
Material Assessment Score:		3
Priority Assessment Score:		Negligible
Action:	Manage	
Comments:	Under Carpet	

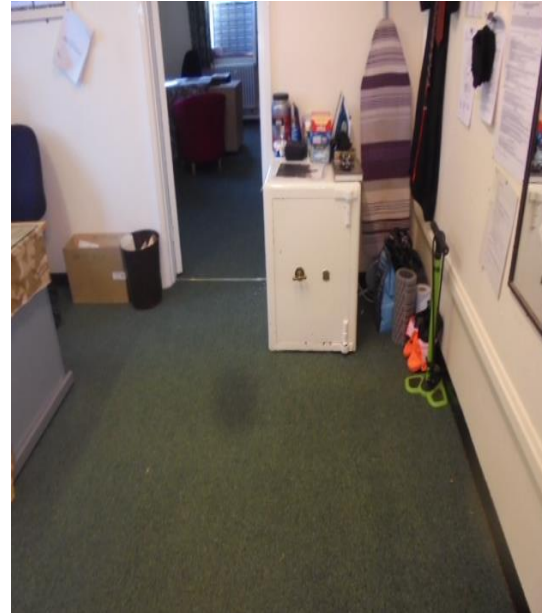
Document Name	Author	Issued by	Revision Number	Issue Date	Page No
2019	Alishia Lewis	Armour AS	0	04/12/2019	7



Item No: 3

Sample No: N/A

Location: Main Block – Ground Floor – Office 0.02



Material Description:	No Access within Safe Casings	
Identification:	Presumed to Contain Asbestos	
Approx. quantity:	1X Safe	
Accessibility	Low	Assessment Score
Product type:	No Access	2
Extent of Damage:	No Access	2
Surface Treatment:	No Access	2
Asbestos type:	No Access	2
Material Assessment Score:		8
Priority Assessment Score:		Medium
Action:	Manage	
Comments:	No access without damaging safe	

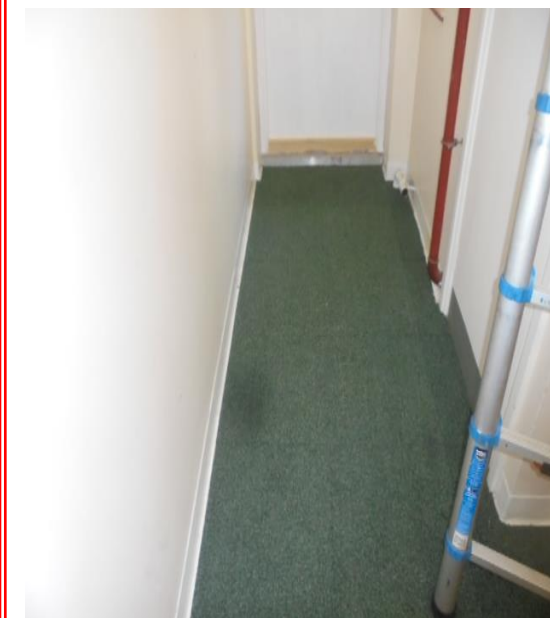
Document Name	Author	Issued by	Revision Number	Issue Date	Page No
2019	Alishia Lewis	Armour AS	0	04/12/2019	8



Item No: 5

Sample No: N/A

Location: Main Block – Ground Floor – Lobby 0.06



Material Description:	Floor Tiles and Adhesive	
Identification:	As Per Sample DK/2 – Asbestos Detected	
Approx. quantity:	5M2	
Accessibility	Low	Assessment Score
Product type:	Composite	1
Extent of Damage:	Minor	1
Surface Treatment:	Non-Friable	0
Asbestos type:	Chrysotile	1
Material Assessment Score:		3
Priority Assessment Score:		Negligible
Action:	Manage	
Comments:	Under Carpet	

Document Name	Author	Issued by	Revision Number	Issue Date	Page No
2019	Alishia Lewis	Armour AS	0	04/12/2019	9



Item No: 6

Sample No: N/A

Location: Main Block – Ground Floor – Classroom 0.08



Material Description:	Floor Tiles and Adhesive	
Identification:	As Per Sample DK/2 – Asbestos Detected	
Approx. quantity:	25M2	
Accessibility	Low	Assessment Score
Product type:	Composite	1
Extent of Damage:	Minor	1
Surface Treatment:	Non-Friable	0
Asbestos type:	Chrysotile	1
Material Assessment Score:		3
Priority Assessment Score:		Negligible
Action:	Manage	
Comments:	Under Carpet	

Document Name	Author	Issued by	Revision Number	Issue Date	Page No
2019	Alishia Lewis	Armour AS	0	04/12/2019	10



Item No: 7

Sample No: N/A

Location: Main Building – Ground Floor – Classroom 0.08



Material Description:	No Access within Safe Casings	
Identification:	Presumed to Contain Asbestos	
Approx. quantity:	1X Safe	
Accessibility	Low	Assessment Score
Product type:	No Access	2
Extent of Damage:	No Access	2
Surface Treatment:	No Access	2
Asbestos type:	No Access	2
Material Assessment Score:		8
Priority Assessment Score:		Medium
Action:	Manage	
Comments:	No access without damaging safe	

Document Name	Author	Issued by	Revision Number	Issue Date	Page No
2019	Alishia Lewis	Armour AS	0	04/12/2019	11



Item No: 11

Sample No: N/A

Location: Main Building – Ground Floor – Drill Hall 0.37



Material Description:	Rope Seals to Skylights	
Identification:	Presumed to Contain Asbestos	
Approx. quantity:	30M2 of Glazing	
Accessibility	Low	<i>Assessment Score</i>
Product type:	Rope	2
Extent of Damage:	Minor	1
Surface Treatment:	Unsealed	1
Asbestos type:	Chrysotile	1
Material Assessment Score:		5
Priority Assessment Score:		Low
Action:	Manage	
Comments:	No Access to Sample due to Height	

Document Name	Author	Issued by	Revision Number	Issue Date	Page No
2019	Alishia Lewis	Armour AS	0	04/12/2019	12



Item No: 12

Sample No: N/A

**Location: Main Building – Ground Floor – Electrical
Cupboard 0.05**



Material Description:	No Access within Electrical Panels	
Identification:	Presumed to Contain Asbestos	
Approx. quantity:	2X Panels	
Accessibility	Low	<i>Assessment Score</i>
Product type:	No Access	2
Extent of Damage:	No Access	1
Surface Treatment:	No Access	1
Asbestos type:	No Access	1
Material Assessment Score:		5
Priority Assessment Score:		Low
Action:	Manage	
Comments:	N/A	

Document Name	Author	Issued by	Revision Number	Issue Date	Page No
2019	Alishia Lewis	Armour AS	0	04/12/2019	13



Item No: 13

Sample No: N/A

**Location: Main Building – Ground Floor – Ladies WC
Lobby 0.13**



Material Description:	Floor Tiles and Adhesive	
Identification:	As Per Sample DK/2 – No Asbestos Detected	
Approx. quantity:	3M2	
Accessibility	High	<i>Assessment Score</i>
Product type:	Composite	1
Extent of Damage:	Minor	1
Surface Treatment:	Non-Friable	0
Asbestos type:	Chrysotile	1
Material Assessment Score:		3
Priority Assessment Score:		Negligible
Action:	Manage	
Comments:	N/A	

Document Name	Author	Issued by	Revision Number	Issue Date	Page No
2019	Alishia Lewis	Armour AS	0	04/12/2019	14



Item No: 15

Sample No: DK/5

Location: Main Building – Ground Floor – Lobby 0.12



Material Description:	Floor Tiles and Adhesive	
Identification:	Sampled – Asbestos Detected	
Approx. quantity:	20M2	
Accessibility	Low	Assessment Score
Product type:	Composite	1
Extent of Damage:	Minor	1
Surface Treatment:	Non-Friable	0
Asbestos type:	Chrysotile	1
Material Assessment Score:		3
Priority Assessment Score:		Negligible
Action:	Manage	
Comments:	Under Carpet	

Document Name	Author	Issued by	Revision Number	Issue Date	Page No
2019	Alishia Lewis	Armour AS	0	04/12/2019	15



Item No: 19

Sample No: N/A

**Location: Main Building – Ground Floor – Mess Room
0.20 and 0.21**



Material Description:	Floor Tiles Under Carpet	
Identification:	As Per Sample DK/2 and DK/5 – Asbestos Detected	
Approx. quantity:	60M2	
Accessibility	Low	<i>Assessment Score</i>
Product type:	Cement	1
Extent of Damage:	Minor	1
Surface Treatment:	Non-Friable	0
Asbestos type:	Chrysotile	1
Material Assessment Score:		3
Priority Assessment Score:		Negligible
Action:	Manage	
Comments:	N/A	

Document Name	Author	Issued by	Revision Number	Issue Date	Page No
2019	Alishia Lewis	Armour AS	0	04/12/2019	16



Item No: 24

Sample No: N/A

Location: Main Building – Ground Floor – Ammo and Armoury Store 0.29, 0.30 and 0.31



Material Description:	No Access within Locked Rooms	
Identification:	Presumed to Contain Asbestos	
Approx. quantity:	3X Rooms	
Accessibility	Low	Assessment Score
Product type:	No Access	3
Extent of Damage:	No Access	3
Surface Treatment:	No Access	3
Asbestos type:	No Access	3
Material Assessment Score:		12
Priority Assessment Score:		High
Action:	Further Investigation Required	
Comments:	No Access Possible as Advised by Site Contact	

Document Name	Author	Issued by	Revision Number	Issue Date	Page No
2019	Alishia Lewis	Armour AS	0	04/12/2019	17



Item No: 25

Sample No: N/A

**Location: Main Building – Ground Floor – Under Stairs
Cupboard 0.07**



Material Description:	No Access within Locked Room	
Identification:	Presumed to Contain Asbestos	
Approx. quantity:	1X Room	
Accessibility	Low	<i>Assessment Score</i>
Product type:	No Access	3
Extent of Damage:	No Access	3
Surface Treatment:	No Access	3
Asbestos type:	No Access	3
Material Assessment Score:		12
Priority Assessment Score:		High
Action:	Further Investigation Required	
Comments:	Key Has Been Lost	

Document Name	Author	Issued by	Revision Number	Issue Date	Page No
2019	Alishia Lewis	Armour AS	0	04/12/2019	18



Item No: 26

Sample No: N/A

Location: Main Building – Ground Floor – Stores 0.33



Material Description:	Floor Tiles and Adhesive	
Identification:	As Per Sample DK/2 and DK/5 – Asbestos Detected	
Approx. quantity:	32M2	
Accessibility	High	Assessment Score
Product type:	Composite	1
Extent of Damage:	Minor	1
Surface Treatment:	Non-Friable	0
Asbestos type:	Chrysotile	1
Material Assessment Score:		3
Priority Assessment Score:		Negligible
Action:	Manage	
Comments:	N/A	

Document Name	Author	Issued by	Revision Number	Issue Date	Page No
2019	Alishia Lewis	Armour AS	0	04/12/2019	19



Item No: 28

Sample No: DK/9

Location: Main Building – Ground Floor – Store 0.36



Material Description:	Floor Tiles and Adhesive	
Identification:	Sampled – Asbestos Detected	
Approx. quantity:	14M2	
Accessibility	High	Assessment Score
Product type:	Composite	1
Extent of Damage:	Moderate	2
Surface Treatment:	Non-Friable	0
Asbestos type:	Chrysotile	1
Material Assessment Score:		4
Priority Assessment Score:		Negligible
Action:	Manage	
Comments:	N/A	

Document Name	Author	Issued by	Revision Number	Issue Date	Page No
2019	Alishia Lewis	Armour AS	0	04/12/2019	20



Item No: 29

Sample No: DK/10

Location: Main Building – Ground Floor - Store 0.36



Material Description:	Sink Pad	
Identification:	Sampled – Asbestos Detected	
Approx. quantity:	1X Sink	
Accessibility	Low	Assessment Score
Product type:	Bitumen	1
Extent of Damage:	Minor	1
Surface Treatment:	Non-Friable	0
Asbestos type:	Chrysotile	1
Material Assessment Score:		3
Priority Assessment Score:		Negligible
Action:	Manage	
Comments:	N/A	

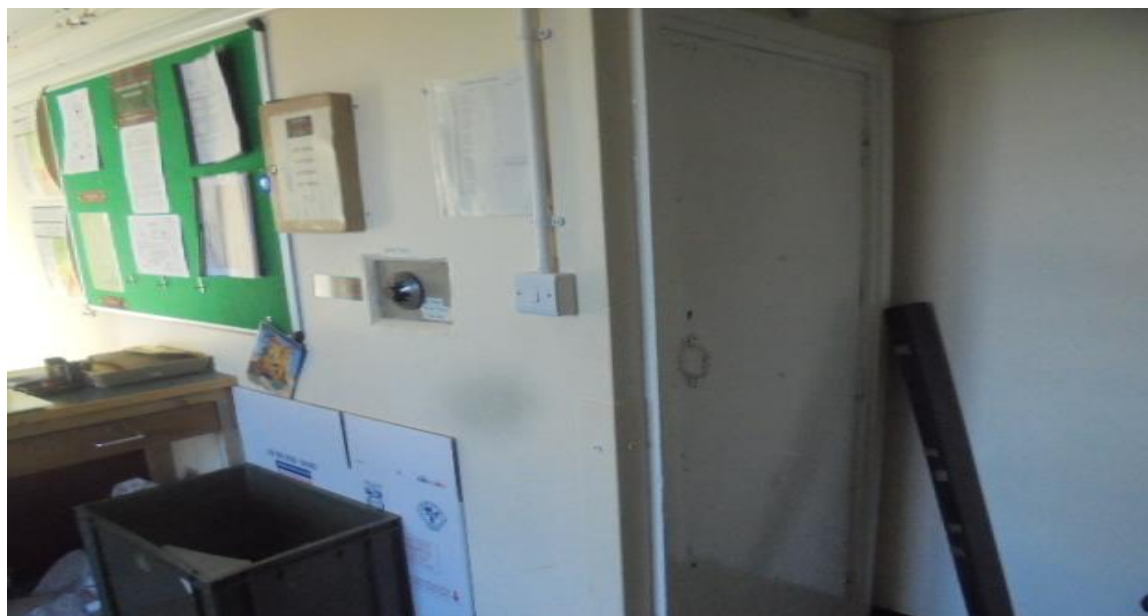
Document Name	Author	Issued by	Revision Number	Issue Date	Page No
2019	Alishia Lewis	Armour AS	0	04/12/2019	21



Item No: 31

Sample No: N/A

Location: Main Building – Ground Floor – Armoury 0.34



Material Description:	No Access within Locked Room	
Identification:	Presumed to Contain Asbestos	
Approx. quantity:	1X Room	
Accessibility	Low	Assessment Score
Product type:	No Access	3
Extent of Damage:	No Access	3
Surface Treatment:	No Access	3
Asbestos type:	No Access	3
Material Assessment Score:		12
Priority Assessment Score:		High
Action:	Further Investigation Required	
Comments:	No Access Possible as Advised by Site Contact	

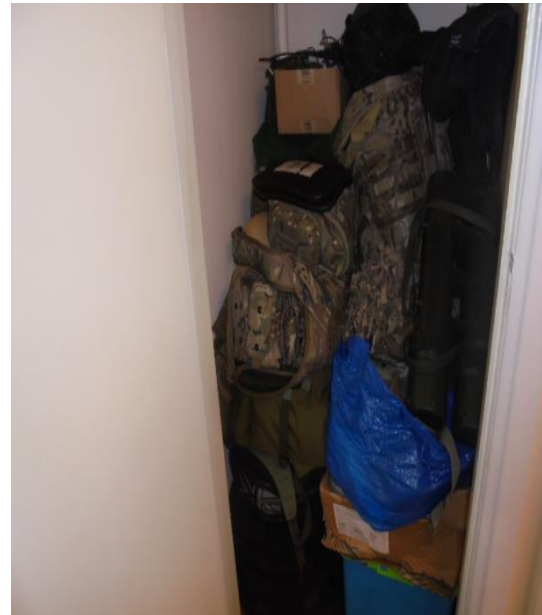
Document Name	Author	Issued by	Revision Number	Issue Date	Page No
2019	Alishia Lewis	Armour AS	0	04/12/2019	22



Item No: 36

Sample No: N/A

Location: Main Building – First Floor – Store 1.15



Material Description:	Cement Pipe Running Through Ceiling	
Identification:	Strongly Presumed to Contain Asbestos	
Approx. quantity:	<1LM Visible	
Accessibility	Low	Assessment Score
Product type:	Cement	1
Extent of Damage:	Minor	1
Surface Treatment:	Unsealed	1
Asbestos type:	Chrysotile	1
Material Assessment Score:		4
Priority Assessment Score:		Negligible
Action:	Manage	
Comments:	No Access to Sample due to Stored Items Blocking Access	

Document Name	Author	Issued by	Revision Number	Issue Date	Page No
2019	Alishia Lewis	Armour AS	0	04/12/2019	23



Item No: 40

Sample No: DK/12

**Location: Main Building – First Floor – Offices 1.24, 1.21,
Store 1.22 and Corridor 1.20**



Material Description:	Floor Tiles and Adhesive	
Identification:	Sampled – Asbestos Detected	
Approx. quantity:	32M2	
Accessibility	High	Assessment Score
Product type:	Composite	1
Extent of Damage:	Minor	1
Surface Treatment:	Non-Friable	0
Asbestos type:	Chrysotile	1
Material Assessment Score:		3
Priority Assessment Score:		Negligible
Action:	Manage	
Comments:	Under Carpet in 3no. Rooms	

Document Name	Author	Issued by	Revision Number	Issue Date	Page No
2019	Alishia Lewis	Armour AS	0	04/12/2019	24



Item No: 43

Sample No: N/A

Location: Main Building – First Floor – Rooms 1.18 and 1.19



Material Description:	Floor Tiles and Adhesive	
Identification:	As Per Sample DK/12 – Asbestos Detected	
Approx. quantity:	15M2	
Accessibility	High	<i>Assessment Score</i>
Product type:	Composite	1
Extent of Damage:	Minor	1
Surface Treatment:	Non-Friable	0
Asbestos type:	Chrysotile	1
Material Assessment Score:		3
Priority Assessment Score:		Negligible
Action:	Manage	
Comments:	N/A	

Document Name	Author	Issued by	Revision Number	Issue Date	Page No
2019	Alishia Lewis	Armour AS	0	04/12/2019	25



Item No: 47

Sample No: N/A

Location: Main Building – First Floor – Room 1.26



Material Description:	No Access within Locked Room	
Identification:	Presumed to Contain Asbestos	
Approx. quantity:	1X Room	
Accessibility	Low	<i>Assessment Score</i>
Product type:	No Access	3
Extent of Damage:	No Access	3
Surface Treatment:	No Access	3
Asbestos type:	No Access	3
Material Assessment Score:		12
Priority Assessment Score:		High
Action:	Further Investigation Required	
Comments:	No Key Available	

Document Name	Author	Issued by	Revision Number	Issue Date	Page No
2019	Alishia Lewis	Armour AS	0	04/12/2019	26



Item No: 49

Sample No: DK/16

Location: Main Building – First Floor – Corridor 1.27



Material Description:	Floor Tiles and Adhesive	
Identification:	Sampled – Asbestos Detected	
Approx. quantity:	17M2	
Accessibility	High	Assessment Score
Product type:	Composite	1
Extent of Damage:	Minor	1
Surface Treatment:	Non-Friable	0
Asbestos type:	Chrysotile	1
Material Assessment Score:		3
Priority Assessment Score:		Negligible
Action:	Manage	
Comments:	N/A	

Document Name	Author	Issued by	Revision Number	Issue Date	Page No
2019	Alishia Lewis	Armour AS	0	04/12/2019	27



Item No: 50

Sample No: N/A

Location: Main Building – First Floor – Rooms 1.28, 1.31 and 1.34



Material Description:	No Access within Locked Rooms	
Identification:	Presumed to Contain Asbestos	
Approx. quantity:	3 X Rooms	
Accessibility	Low	<i>Assessment Score</i>
Product type:	No Access	3
Extent of Damage:	No Access	3
Surface Treatment:	No Access	3
Asbestos type:	No Access	3
Material Assessment Score:		12
Priority Assessment Score:		High
Action:	Further Investigation Required	
Comments:	No Keys Available	

Document Name	Author	Issued by	Revision Number	Issue Date	Page No
2019	Alishia Lewis	Armour AS	0	04/12/2019	28



Item No: 51

Sample No: N/A

**Location: Main Building – First Floor Classrooms 1.29,
1.30 and Cupboard 1.32**



Material Description:	Floor Tiles and Adhesive	
Identification:	As Per Sample DK/16 – Asbestos Detected	
Approx. quantity:	54M2	
Accessibility	High	Assessment Score
Product type:	Composite	1
Extent of Damage:	Minor	1
Surface Treatment:	Non-Friable	0
Asbestos type:	Chrysotile	1
Material Assessment Score:		3
Priority Assessment Score:		Negligible
Action:	Manage	
Comments:	N/A	

Document Name	Author	Issued by	Revision Number	Issue Date	Page No
2019	Alishia Lewis	Armour AS	0	04/12/2019	29



Item No: 52

Sample No: N/A

Location: Main Building – First Floor – Classroom 1.29



Material Description:	Floor Tiles and Adhesive	
Identification:	As Per Sample DK/12 – Asbestos Detected	
Approx. quantity:	25M2	
Accessibility	High	<i>Assessment Score</i>
Product type:	Composite	1
Extent of Damage:	Moderate	2
Surface Treatment:	Non-Friable	0
Asbestos type:	Chrysotile	1
Material Assessment Score:		4
Priority Assessment Score:		Negligible
Action:	Manage	
Comments:	N/A	

Document Name	Author	Issued by	Revision Number	Issue Date	Page No
2019	Alishia Lewis	Armour AS	0	04/12/2019	30

**Item No: 53****Sample No: N/A****Location: Main Building – First Floor – WC 1.37 and Corridor**

Material Description:	Floor Tiles and Adhesive	
Identification:	As Per Sample DK/16 – No Asbestos Detected	
Approx. quantity:	8M2	
Accessibility	High	Assessment Score
Product type:	Composite	1
Extent of Damage:	Minor	1
Surface Treatment:	Non-Friable	0
Asbestos type:	Chrysotile	1
Material Assessment Score:		3
Priority Assessment Score:		Negligible
Action:	Manage	
Comments:	Plastic Black Toilet Cistern	

Document Name	Author	Issued by	Revision Number	Issue Date	Page No
2019	Alishia Lewis	Armour AS	0	04/12/2019	31



Item No: 54

Sample No: N/A

Location: Main Building - External



Material Description:	Cement Flue Pipes	
Identification:	Strongly Presumed to Contain Asbestos	
Approx. quantity:	(2No. Pipes 1-2LM)	
Accessibility	Low	Assessment Score
Product type:	Cement	1
Extent of Damage:	Minor	1
Surface Treatment:	Unsealed	1
Asbestos type:	Chrysotile	1
Material Assessment Score:		4
Priority Assessment Score:		Negligible
Action:	Manage	
Comments:	No Access to Sample due to Height	

Document Name	Author	Issued by	Revision Number	Issue Date	Page No
2019	Alishia Lewis	Armour AS	0	04/12/2019	32

**Item No: 57****Sample No: N/A****Location: Building 7 – Garage**

Material Description:	Profiled Cement Roof	
Identification:	Strongly Presumed to Contain Asbestos	
Approx. quantity:	800M2	
Accessibility	Low	<i>Assessment Score</i>
Product type:	Cement	1
Extent of Damage:	Moderate	2
Surface Treatment:	Unsealed	1
Asbestos type:	Chrysotile	1
Material Assessment Score:		5
Priority Assessment Score:		Low
Action:	Manage	
Comments:	Several Holes in Roof	

Document Name	Author	Issued by	Revision Number	Issue Date	Page No
2019	Alishia Lewis	Armour AS	0	04/12/2019	33

**Item No: 59****Sample No: DK/17****Location: Building 7 - External**

Material Description:	Cement Downpipes	
Identification:	Sampled – Asbestos Detected	
Approx. quantity:	X3 (15LM Total)	
Accessibility	Low	Assessment Score
Product type:	Cement	1
Extent of Damage:	Moderate	2
Surface Treatment:	Unsealed	1
Asbestos type:	Chrysotile	1
Material Assessment Score:		5
Priority Assessment Score:		Low
Action:	Remove	
Comments:	One downpipe has fallen off, and the other two Pipes appear to be loose	

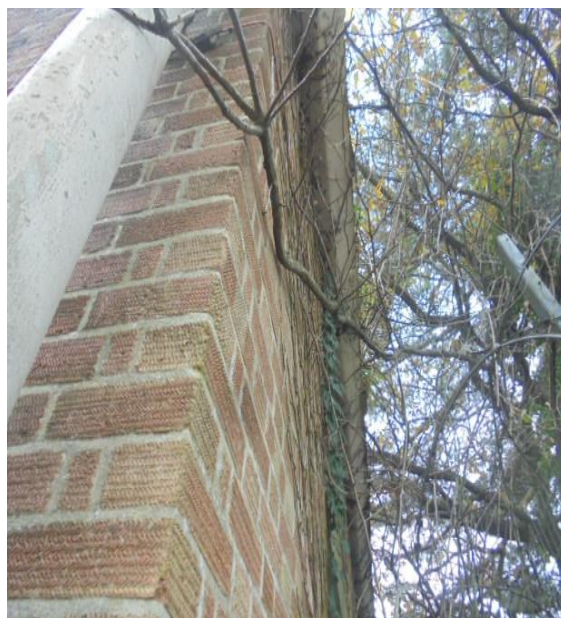
Document Name	Author	Issued by	Revision Number	Issue Date	Page No
2019	Alishia Lewis	Armour AS	0	04/12/2019	34



Item No: 60

Sample No: N/A

Location: Building 7 - External



Material Description:	Cement Guttering	
Identification:	As Per Sample DK/17 – Asbestos Detected	
Approx. quantity:	55LM	
Accessibility	Low	Assessment Score
Product type:	Cement	1
Extent of Damage:	Minor	1
Surface Treatment:	Unsealed	1
Asbestos type:	Chrysotile	1
Material Assessment Score:		4
Priority Assessment Score:		Negligible
Action:	Manage	
Comments:	N/A	

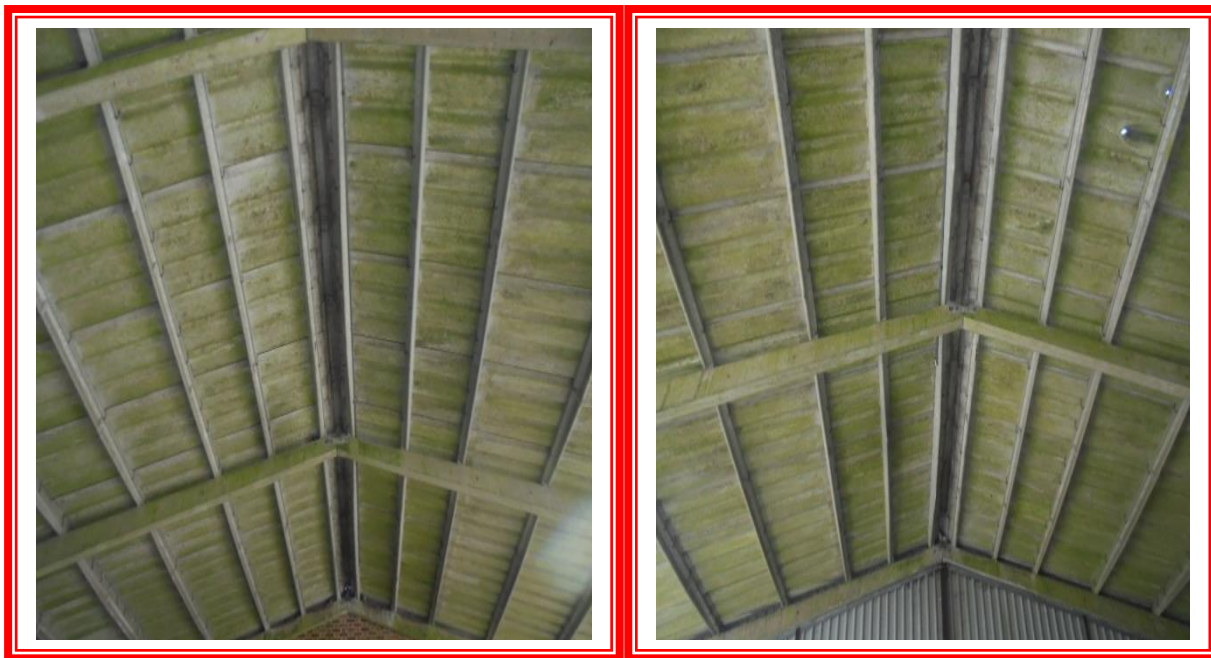
Document Name	Author	Issued by	Revision Number	Issue Date	Page No
2019	Alishia Lewis	Armour AS	0	04/12/2019	35



Item No: 61

Sample No: N/A

Location: Building 4 – Garage and Open Garage



Material Description:	Profiled Cement Roof	
Identification:	Strongly Presumed to Contain Asbestos	
Approx. quantity:	510M2	
Accessibility	Low	Assessment Score
Product type:	Cement	1
Extent of Damage:	Moderate	2
Surface Treatment:	Unsealed	1
Asbestos type:	Chrysotile	1
Material Assessment Score:		5
Priority Assessment Score:		Low
Action:	Manage	
Comments:	Several Holes in Roof and Possible Debris – Floor Must Only Be Cleaned/swept by an Asbestos Trained Contractor	

Document Name	Author	Issued by	Revision Number	Issue Date	Page No
2019	Alishia Lewis	Armour AS	0	04/12/2019	36



Item No: 62

Sample No: N/A

Location: Building 4 – External



Material Description:	Cement Downpipes	
Identification:	As Per Sample DK/17 – Asbestos Detected	
Approx. quantity:	6X Pipes (30LM Total)	
Accessibility	Low	Assessment Score
Product type:	Cement	1
Extent of Damage:	Minor	1
Surface Treatment:	Unsealed	1
Asbestos type:	Chrysotile	1
Material Assessment Score:		4
Priority Assessment Score:		Negligible
Action:	Manage/Encapsulate	
Comments:	One Pipe Appears to be Loose and Should be Replaced	

Document Name	Author	Issued by	Revision Number	Issue Date	Page No
2019	Alishia Lewis	Armour AS	0	04/12/2019	37



Item No: 63

Sample No: N/A

Location: Building 4 - External



Material Description:	Cement Guttering	
Identification:	As Per Sample DK/17 – Asbestos Detected	
Approx. quantity:	55LM	
Accessibility	Low	Assessment Score
Product type:	Cement	1
Extent of Damage:	Minor	1
Surface Treatment:	Unsealed	1
Asbestos type:	Chrysotile	1
Material Assessment Score:		4
Priority Assessment Score:		Negligible
Action:	Manage	
Comments:	N/A	

Document Name	Author	Issued by	Revision Number	Issue Date	Page No
2019	Alishia Lewis	Armour AS	0	04/12/2019	38



Item No: 64

Sample No: N/A

Location: Building 4 - External



Material Description:	Cement Roof Edging	
Identification:	Strongly Presumed to Contain Asbestos	
Approx. quantity:	42LM	
Accessibility	Low	Assessment Score
Product type:	Cement	1
Extent of Damage:	Minor	1
Surface Treatment:	Unsealed	1
Asbestos type:	Chrysotile	1
Material Assessment Score:		4
Priority Assessment Score:		Negligible
Action:	Manage	
Comments:	No Access to Sample due to Height	

Document Name	Author	Issued by	Revision Number	Issue Date	Page No
2019	Alishia Lewis	Armour AS	0	04/12/2019	39



Item No: 66

Sample No: DK/18

Location: Building 4 – Open Garage



Material Description:	Damp Proof Course	
Identification:	Sampled – Asbestos Detected	
Approx. quantity:	To Entire Perimeter of Building and Walls	
Accessibility	Low	Assessment Score
Product type:	Bitumen	1
Extent of Damage:	Minor	1
Surface Treatment:	Non-Friable	0
Asbestos type:	Chrysotile	1
Material Assessment Score:		3
Priority Assessment Score:		Negligible
Action:	Manage	
Comments:	N/A	

Document Name	Author	Issued by	Revision Number	Issue Date	Page No
2019	Alishia Lewis	Armour AS	0	04/12/2019	40

**Item No: 67****Sample No: N/A****Location: Building 4 – WC and Store**

Material Description:	Toilet Seats	
Identification:	Presumed to Contain Asbestos	
Approx. quantity:	X2 Seats	
Accessibility	Low	Assessment Score
Product type:	Composite	1
Extent of Damage:	Minor	1
Surface Treatment:	Non-Friable	0
Asbestos type:	Chrysotile	1
Material Assessment Score:		3
Priority Assessment Score:		Negligible
Action:	Manage	
Comments:	No Access to Sample as May Damage integrity of Seats	

Document Name	Author	Issued by	Revision Number	Issue Date	Page No
2019	Alishia Lewis	Armour AS	0	04/12/2019	41

**Item No: 70****Sample No: N/A****Location: Caretaker House/Garage**

Material Description:	No Access within House	
Identification:	Presumed to Contain Asbestos	
Approx. quantity:	Unknown	
Accessibility	Low	Assessment Score
Product type:	No Access	3
Extent of Damage:	No Access	3
Surface Treatment:	No Access	3
Asbestos type:	No Access	3
Material Assessment Score:		12
Priority Assessment Score:		High
Action:	Further Investigation Required	
Comments:	No Access to Inspect House on Request of the Caretaker	

Document Name	Author	Issued by	Revision Number	Issue Date	Page No
2019	Alishia Lewis	Armour AS	0	04/12/2019	42

Section 5: Negative Photos Sheets

Item No: 1
Sample No: DK/1
Location: Main Block – Ground Floor – Main Lobby 0.01


Material Description:	Insulation Board Wall Panels	
Identification:	Sampled – No Asbestos Detected	
Approx. quantity:	Medium	
Accessibility	High	<i>Assessment Score</i>
Product type:	N/A	N/A
Extent of Damage:	N/A	N/A
Surface Treatment:	N/A	N/A
Asbestos type:	N/A	N/A
Material Assessment Score:		N/A
Priority Assessment Score:		N/A
Action:	N/A	
Comments:	N/A	

Document Name	Author	Issued by	Revision Number	Issue Date	Page No
2019	Alishia Lewis	Armour AS	0	04/12/2019	43



Item No: 4

Sample No: N/A

Location: Main Block – Ground Floor – Corridor 0.04



Material Description:	Visual Inspection – No Suspect Materials Found	
Identification:	N/A	
Approx. quantity:	N/A	
Accessibility	N/A	<i>Assessment Score</i>
Product type:	N/A	N/A
Extent of Damage:	N/A	N/A
Surface Treatment:	N/A	N/A
Asbestos type:	N/A	N/A
Material Assessment Score:		N/A
Priority Assessment Score:		N/A
Action:	N/A	
Comments:	N/A	

Document Name	Author	Issued by	Revision Number	Issue Date	Page No
2019	Alishia Lewis	Armour AS	0	04/12/2019	44



Item No: 8

Sample No: N/A

Location: Main Building – Ground Floor – Stored 0.09 and 0.10



Material Description:	Visual Inspection – No Suspect Materials Found	
Identification:	N/A	
Approx. quantity:	N/A	
Accessibility	N/A	<i>Assessment Score</i>
Product type:	N/A	N/A
Extent of Damage:	N/A	N/A
Surface Treatment:	N/A	N/A
Asbestos type:	N/A	N/A
Material Assessment Score:		N/A
Priority Assessment Score:		N/A
Action:	N/A	
Comments:	N/A	

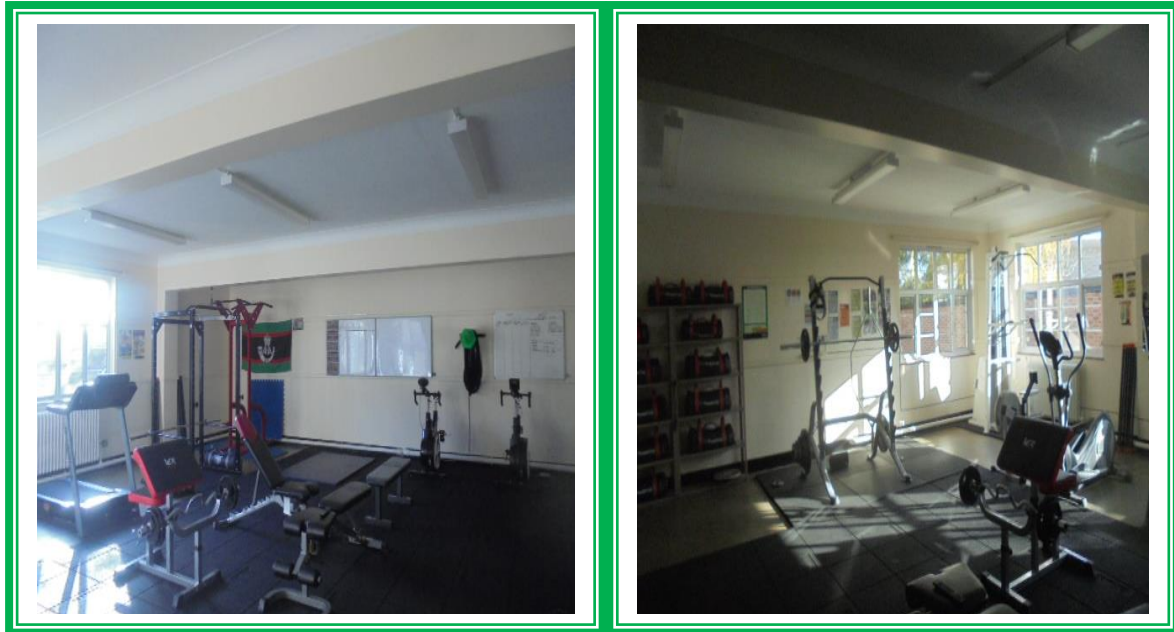
Document Name	Author	Issued by	Revision Number	Issue Date	Page No
2019	Alishia Lewis	Armour AS	0	04/12/2019	45



Item No: 9

Sample No: N/A

Location: Main Building – Ground Floor – Gym 0.11



Material Description:	Visual Inspection – No Suspect Materials Found	
Identification:	N/A	
Approx. quantity:	N/A	
Accessibility	N/A	Assessment Score
Product type:	N/A	N/A
Extent of Damage:	N/A	N/A
Surface Treatment:	N/A	N/A
Asbestos type:	N/A	N/A
Material Assessment Score:		N/A
Priority Assessment Score:		N/A
Action:	N/A	
Comments:	N/A	

Document Name	Author	Issued by	Revision Number	Issue Date	Page No
2019	Alishia Lewis	Armour AS	0	04/12/2019	46



Item No: 10

Sample No: DK/3

Location: Main Building – Ground Floor - Drill Hall 0.37



Material Description:	Bitumen Under Parquet Flooring	
Identification:	Sampled – No Asbestos Detected	
Approx. quantity:	190M2	
Accessibility	N/A	<i>Assessment Score</i>
Product type:	N/A	N/A
Extent of Damage:	N/A	N/A
Surface Treatment:	N/A	N/A
Asbestos type:	N/A	N/A
Material Assessment Score:		N/A
Priority Assessment Score:		N/A
Action:	N/A	
Comments:	Limited Access above Suspended Ceiling Tiles due to Height	

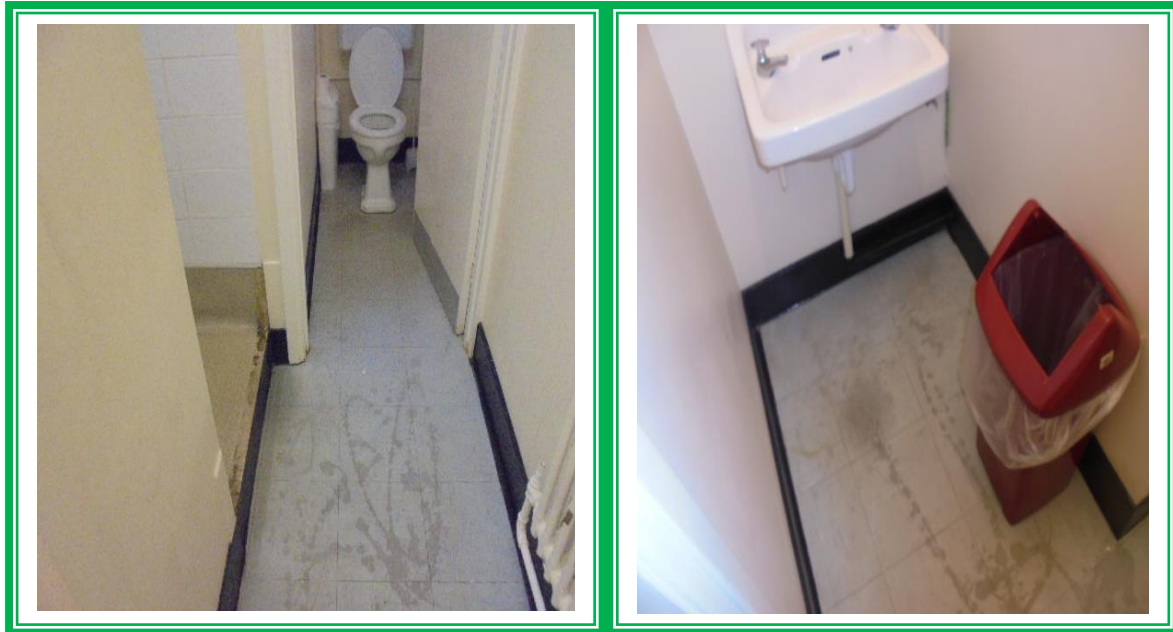
Document Name	Author	Issued by	Revision Number	Issue Date	Page No
2019	Alishia Lewis	Armour AS	0	04/12/2019	47



Item No: 14

Sample No: DK/4

Location: Main Building – Ground Floor – WC 0.14



Material Description:	Floor Tiles and Adhesive	
Identification:	Sampled – No Asbestos Detected	
Approx. quantity:	5M2	
Accessibility	N/A	<i>Assessment Score</i>
Product type:	N/A	N/A
Extent of Damage:	N/A	N/A
Surface Treatment:	N/A	N/A
Asbestos type:	N/A	N/A
Material Assessment Score:		N/A
Priority Assessment Score:		N/A
Action:	N/A	
Comments:	N/A	

Document Name	Author	Issued by	Revision Number	Issue Date	Page No
2019	Alishia Lewis	Armour AS	0	04/12/2019	48



Item No: 16

Sample No: DK/6

Location: Main Building – Ground Floor Boiler Room and Store 0.17 and 0.18



Material Description:	Sink Pad	
Identification:	Sampled – No Asbestos Detected	
Approx. quantity:	1X Sink	
Accessibility	N/A	<i>Assessment Score</i>
Product type:	N/A	N/A
Extent of Damage:	N/A	N/A
Surface Treatment:	N/A	N/A
Asbestos type:	N/A	N/A
Material Assessment Score:		N/A
Priority Assessment Score:		N/A
Action:	N/A	
Comments:	N/A	

Document Name	Author	Issued by	Revision Number	Issue Date	Page No
2019	Alishia Lewis	Armour AS	0	04/12/2019	49



Item No: 17

Sample No: DK/7

Location: Main Building – Basement Boiler Room B.02



Material Description:	Gaskets	
Identification:	Sampled – No Asbestos Detected	
Approx. quantity:	10 x Gaskets	
Accessibility	N/A	<i>Assessment Score</i>
Product type:	N/A	N/A
Extent of Damage:	N/A	N/A
Surface Treatment:	N/A	N/A
Asbestos type:	N/A	N/A
Material Assessment Score:		N/A
Priority Assessment Score:		N/A
Action:	N/A	
Comments:	Non-Asbestos Boiler	

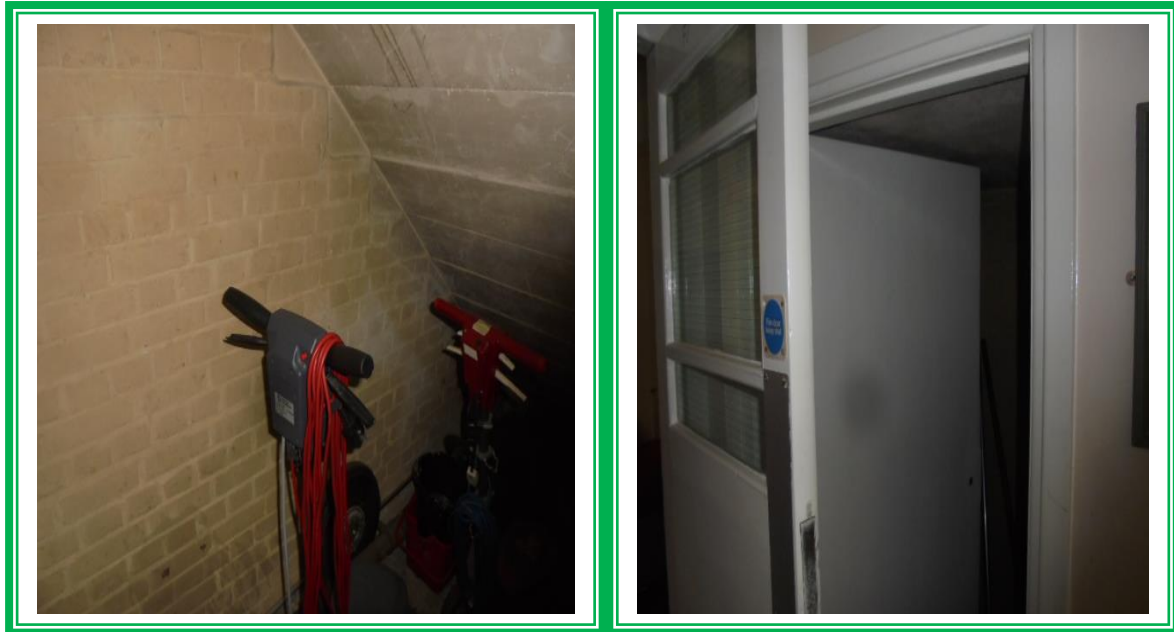
Document Name	Author	Issued by	Revision Number	Issue Date	Page No
2019	Alishia Lewis	Armour AS	0	04/12/2019	50



Item No: 18

Sample No: N/A

Location: Main Building – Ground Floor Cupboard 0.19



Material Description:	Visual Inspection – No Suspect Materials Found	
Identification:	N/A	
Approx. quantity:	N/A	
Accessibility	N/A	<i>Assessment Score</i>
Product type:	N/A	N/A
Extent of Damage:	N/A	N/A
Surface Treatment:	N/A	N/A
Asbestos type:	N/A	N/A
Material Assessment Score:		N/A
Priority Assessment Score:		N/A
Action:	N/A	
Comments:	N/A	

Document Name	Author	Issued by	Revision Number	Issue Date	Page No
2019	Alishia Lewis	Armour AS	0	04/12/2019	51



Item No: 20

Sample No: N/A

**Location: Main Building – Ground Floor Kitchen and Store
0.23 and 0.24**



Material Description:	Visual Inspection – No Suspect Materials Found	
Identification:	N/A	
Approx. quantity:	N/A	
Accessibility	N/A	<i>Assessment Score</i>
Product type:	N/A	N/A
Extent of Damage:	N/A	N/A
Surface Treatment:	N/A	N/A
Asbestos type:	N/A	N/A
Material Assessment Score:		N/A
Priority Assessment Score:		N/A
Action:	N/A	
Comments:	No Access within Timber Boxing	

Document Name	Author	Issued by	Revision Number	Issue Date	Page No
2019	Alishia Lewis	Armour AS	0	04/12/2019	52



Item No: 21

Sample No: DK/8

Location: Main Building – Ground Floor Bar 0.22



Material Description:	Textured Coating to Ceiling	
Identification:	Sampled – No Asbestos Detected	
Approx. quantity:	10M2	
Accessibility	N/A	<i>Assessment Score</i>
Product type:	N/A	N/A
Extent of Damage:	N/A	N/A
Surface Treatment:	N/A	N/A
Asbestos type:	N/A	N/A
Material Assessment Score:		N/A
Priority Assessment Score:		N/A
Action:	N/A	
Comments:	N/A	

Document Name	Author	Issued by	Revision Number	Issue Date	Page No
2019	Alishia Lewis	Armour AS	0	04/12/2019	53



Item No: 22

Sample No: N/A

**Location: Main Building – Ground Floor Office and Store
0.25 and 0.26**



Material Description:	Visual Inspection – No Suspect Materials Found	
Identification:	N/A	
Approx. quantity:	N/A	
Accessibility	N/A	Assessment Score
Product type:	N/A	N/A
Extent of Damage:	N/A	N/A
Surface Treatment:	N/A	N/A
Asbestos type:	N/A	N/A
Material Assessment Score:		N/A
Priority Assessment Score:		N/A
Action:	N/A	
Comments:	Non-Asbestos Fiberboard Wall Panels in Store	

Document Name	Author	Issued by	Revision Number	Issue Date	Page No
2019	Alishia Lewis	Armour AS	0	04/12/2019	54



Item No: 23

Sample No: N/A

Location: Main Building – Ground Floor Stores 0.27, 0.28 and Store



Material Description:	Visual Inspection – No Suspect Materials Found	
Identification:	N/A	
Approx. quantity:	N/A	
Accessibility	N/A	Assessment Score
Product type:	N/A	N/A
Extent of Damage:	N/A	N/A
Surface Treatment:	N/A	N/A
Asbestos type:	N/A	N/A
Material Assessment Score:		N/A
Priority Assessment Score:		N/A
Action:	N/A	
Comments:	Non-Asbestos Fiberboard Wall Panels	

Document Name	Author	Issued by	Revision Number	Issue Date	Page No
2019	Alishia Lewis	Armour AS	0	04/12/2019	55



Item No: 27

Sample No: N/A

Location: Main Building – Ground Floor Store 0.35



Material Description:	Visual Inspection – No Suspect Materials Found	
Identification:	N/A	
Approx. quantity:	N/A	
Accessibility	N/A	<i>Assessment Score</i>
Product type:	N/A	N/A
Extent of Damage:	N/A	N/A
Surface Treatment:	N/A	N/A
Asbestos type:	N/A	N/A
Material Assessment Score:		N/A
Priority Assessment Score:		N/A
Action:	N/A	
Comments:	N/A	

Document Name	Author	Issued by	Revision Number	Issue Date	Page No
2019	Alishia Lewis	Armour AS	0	04/12/2019	56



Item No: 30

Sample No: DK/11

Location: Main Building – Ground Floor Store 0.36



Material Description:	Textured Coating to Ceiling	
Identification:	Sampled – No Asbestos Detected	
Approx. quantity:	14M2	
Accessibility	N/A	<i>Assessment Score</i>
Product type:	N/A	N/A
Extent of Damage:	N/A	N/A
Surface Treatment:	N/A	N/A
Asbestos type:	N/A	N/A
Material Assessment Score:		N/A
Priority Assessment Score:		N/A
Action:	N/A	
Comments:	N/A	

Document Name	Author	Issued by	Revision Number	Issue Date	Page No
2019	Alishia Lewis	Armour AS	0	04/12/2019	57



Item No: 32

Sample No: N/A

Location: Main Building – First Floor Admin Office and Corridor 1.02 and 1.01



Material Description:	Visual Inspection – No Suspect Materials Found	
Identification:	N/A	
Approx. quantity:	N/A	
Accessibility	N/A	<i>Assessment Score</i>
Product type:	N/A	N/A
Extent of Damage:	N/A	N/A
Surface Treatment:	N/A	N/A
Asbestos type:	N/A	N/A
Material Assessment Score:		N/A
Priority Assessment Score:		N/A
Action:	N/A	
Comments:	N/A	

Document Name	Author	Issued by	Revision Number	Issue Date	Page No
2019	Alishia Lewis	Armour AS	0	04/12/2019	58



Item No: 33

Sample No: N/A

Location: Main Building – First Floor Offices 1.06. 1.07 and 1.03



Material Description:	Visual Inspection – No Suspect Materials Found	
Identification:	N/A	
Approx. quantity:	N/A	
Accessibility	N/A	<i>Assessment Score</i>
Product type:	N/A	N/A
Extent of Damage:	N/A	N/A
Surface Treatment:	N/A	N/A
Asbestos type:	N/A	N/A
Material Assessment Score:		N/A
Priority Assessment Score:		N/A
Action:	N/A	
Comments:	N/A	

Document Name	Author	Issued by	Revision Number	Issue Date	Page No
2019	Alishia Lewis	Armour AS	0	04/12/2019	59



Item No: 34

Sample No: N/A

Location: Main Building – First Floor WC 1.04



Material Description:	Visual Inspection – No Suspect Materials Found	
Identification:	N/A	
Approx. quantity:	N/A	
Accessibility	N/A	Assessment Score
Product type:	N/A	N/A
Extent of Damage:	N/A	N/A
Surface Treatment:	N/A	N/A
Asbestos type:	N/A	N/A
Material Assessment Score:		N/A
Priority Assessment Score:		N/A
Action:	N/A	
Comments:	Non-Asbestos Toilet Seat	

Document Name	Author	Issued by	Revision Number	Issue Date	Page No
2019	Alishia Lewis	Armour AS	0	04/12/2019	60



Item No: 35

Sample No: N/A

Location: Main Building – Loft Space above 1.01



Material Description:	Visual Inspection – No Suspect Materials Found	
Identification:	N/A	
Approx. quantity:	N/A	
Accessibility	N/A	<i>Assessment Score</i>
Product type:	N/A	N/A
Extent of Damage:	N/A	N/A
Surface Treatment:	N/A	N/A
Asbestos type:	N/A	N/A
Material Assessment Score:		N/A
Priority Assessment Score:		N/A
Action:	N/A	
Comments:	Limited Access into Loft as no Crawlboards were Available. Non asbestos hessian pipe insulation	

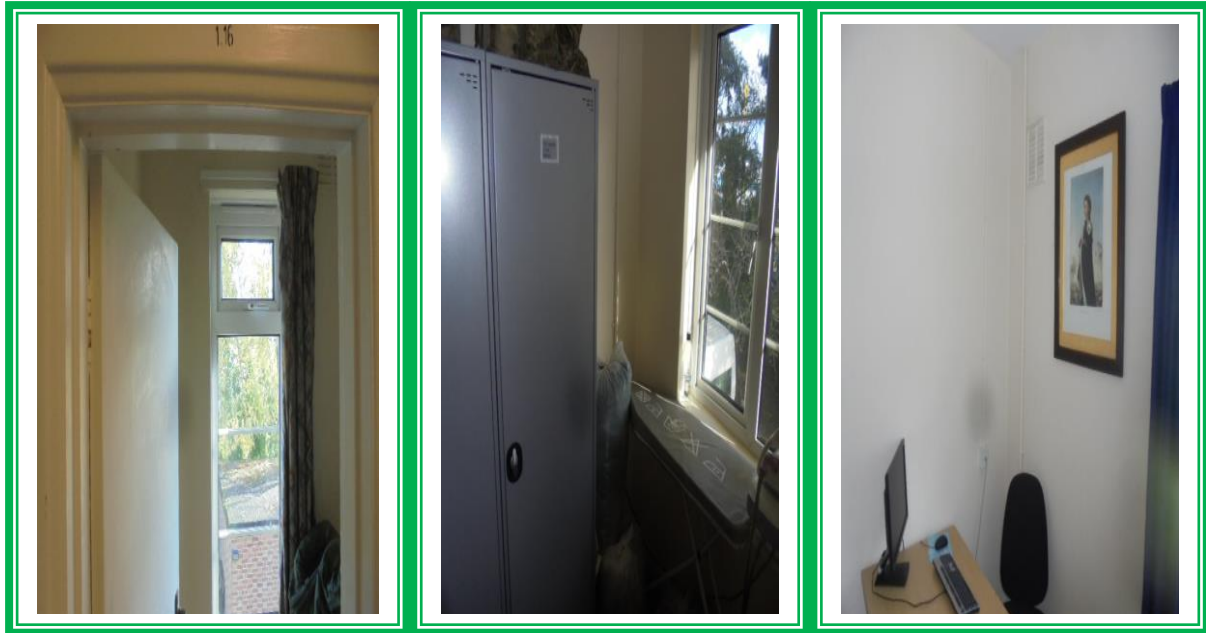
Document Name	Author	Issued by	Revision Number	Issue Date	Page No
2019	Alishia Lewis	Armour AS	0	04/12/2019	61



Item No: 37

Sample No: N/A

Location: Main Building – First Floor Store 1.16, 1.14 and Office 1.13



Material Description:	Visual Inspection – No Suspect Materials Found	
Identification:	N/A	
Approx. quantity:	N/A	
Accessibility	N/A	Assessment Score
Product type:	N/A	N/A
Extent of Damage:	N/A	N/A
Surface Treatment:	N/A	N/A
Asbestos type:	N/A	N/A
Material Assessment Score:		N/A
Priority Assessment Score:		N/A
Action:	N/A	
Comments:	N/A	

Document Name	Author	Issued by	Revision Number	Issue Date	Page No
2019	Alishia Lewis	Armour AS	0	04/12/2019	62

**Item No: 38****Sample No: N/A****Location: Main Building – First Floor Offices 1.11, 1.10, 1.09 and Store 1.12**

Material Description:	Visual Inspection – No Suspect Materials Found	
Identification:	N/A	
Approx. quantity:	N/A	
Accessibility	N/A	Assessment Score
Product type:	N/A	N/A
Extent of Damage:	N/A	N/A
Surface Treatment:	N/A	N/A
Asbestos type:	N/A	N/A
Material Assessment Score:		N/A
Priority Assessment Score:		N/A
Action:	N/A	
Comments:	N/A	

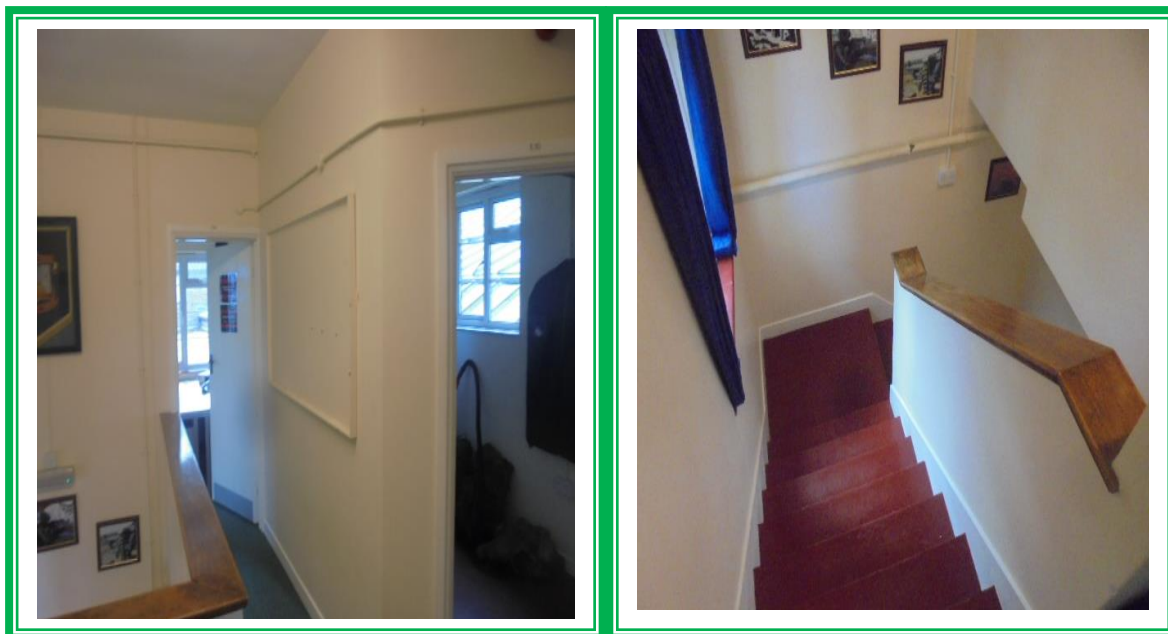
Document Name	Author	Issued by	Revision Number	Issue Date	Page No
2019	Alishia Lewis	Armour AS	0	04/12/2019	63



Item No: 39

Sample No: N/A

Location: Main Building – First Floor Landing and Stairwell 1.08



Material Description:	Visual Inspection – No Suspect Materials Found	
Identification:	N/A	
Approx. quantity:	N/A	
Accessibility	N/A	<i>Assessment Score</i>
Product type:	N/A	N/A
Extent of Damage:	N/A	N/A
Surface Treatment:	N/A	N/A
Asbestos type:	N/A	N/A
Material Assessment Score:		N/A
Priority Assessment Score:		N/A
Action:	N/A	
Comments:	N/A	

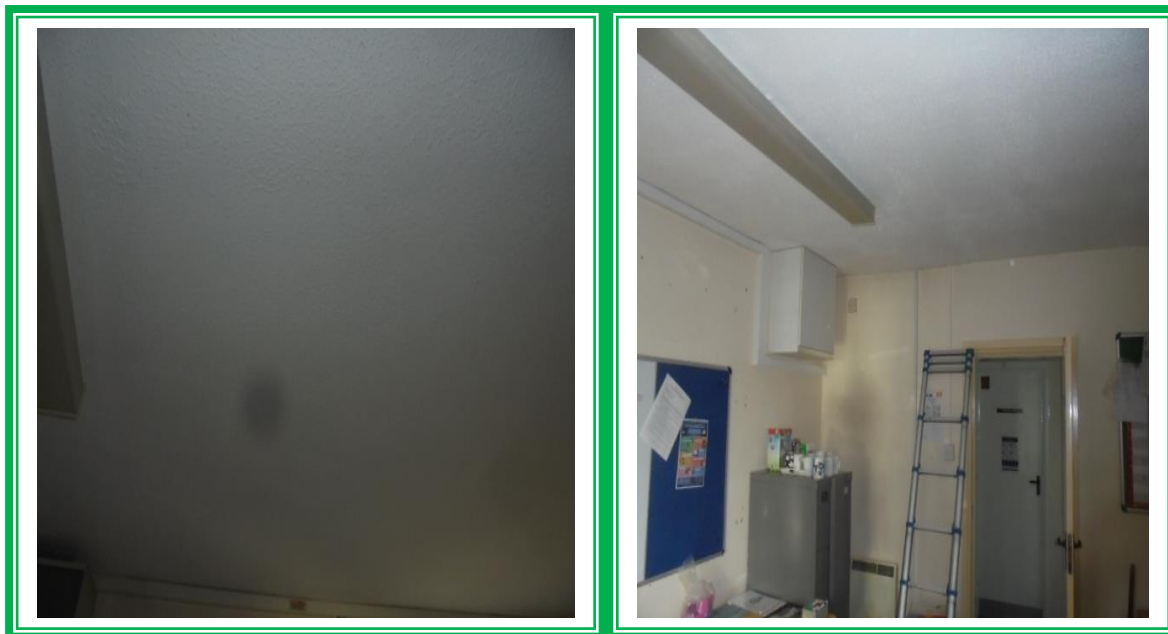
Document Name	Author	Issued by	Revision Number	Issue Date	Page No
2019	Alishia Lewis	Armour AS	0	04/12/2019	64



Item No: 41

Sample No: DK/13

Location: Main Building – First Floor Office 1.23



Material Description:	Textured Coating to Ceiling	
Identification:	Sampled – No Asbestos Detected	
Approx. quantity:	20M2	
Accessibility	N/A	<i>Assessment Score</i>
Product type:	N/A	N/A
Extent of Damage:	N/A	N/A
Surface Treatment:	N/A	N/A
Asbestos type:	N/A	N/A
Material Assessment Score:		N/A
Priority Assessment Score:		N/A
Action:	N/A	
Comments:	N/A	

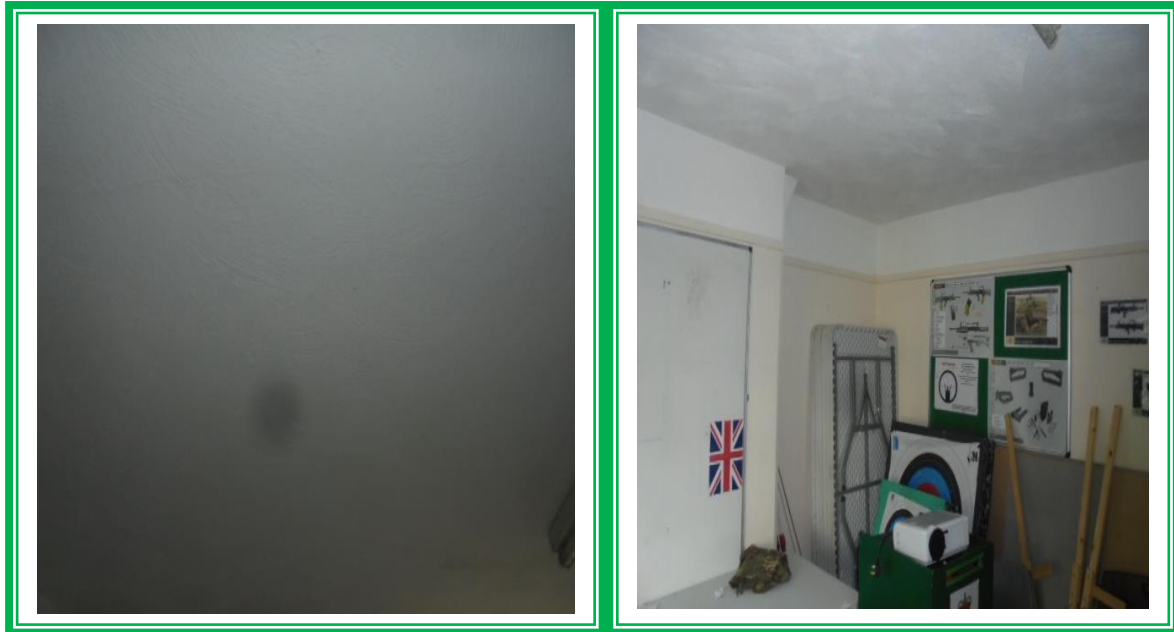
Document Name	Author	Issued by	Revision Number	Issue Date	Page No
2019	Alishia Lewis	Armour AS	0	04/12/2019	65



Item No: 42

Sample No: DK/14

Location: Main Building – First Floor Office 1.24



Material Description:	Textured Coating to Ceiling	
Identification:	Sampled – No Asbestos Detected	
Approx. quantity:	16M2	
Accessibility	N/A	<i>Assessment Score</i>
Product type:	N/A	N/A
Extent of Damage:	N/A	N/A
Surface Treatment:	N/A	N/A
Asbestos type:	N/A	N/A
Material Assessment Score:		N/A
Priority Assessment Score:		N/A
Action:	N/A	
Comments:	N/A	

Document Name	Author	Issued by	Revision Number	Issue Date	Page No
2019	Alishia Lewis	Armour AS	0	04/12/2019	66



Item No: 44

Sample No: N/A

Location: Main Building – First Floor Rooms 1.18 and 1.19



Material Description:	Textured Coating to Ceilings	
Identification:	As Per Sample DK/13 – No Asbestos Detected	
Approx. quantity:	15M2	
Accessibility	N/A	Assessment Score
Product type:	N/A	N/A
Extent of Damage:	N/A	N/A
Surface Treatment:	N/A	N/A
Asbestos type:	N/A	N/A
Material Assessment Score:		N/A
Priority Assessment Score:		N/A
Action:	N/A	
Comments:	N/A	

Document Name	Author	Issued by	Revision Number	Issue Date	Page No
2019	Alishia Lewis	Armour AS	0	04/12/2019	67



Item No: 45

Sample No: N/A

Location: Main Building – First Floor Landing and Stairwell 1.17



Material Description:	Visual Inspection – No Suspect Materials Found	
Identification:	N/A	
Approx. quantity:	N/A	
Accessibility	N/A	Assessment Score
Product type:	N/A	N/A
Extent of Damage:	N/A	N/A
Surface Treatment:	N/A	N/A
Asbestos type:	N/A	N/A
Material Assessment Score:		N/A
Priority Assessment Score:		N/A
Action:	N/A	
Comments:	N/A	

Document Name	Author	Issued by	Revision Number	Issue Date	Page No
2019	Alishia Lewis	Armour AS	0	04/12/2019	68



Item No: 46

Sample No: DK/15

Location: Main Building – First Floor Office 1.25 and Cupboard



Material Description:	Cement Wall and Door Header Panels	
Identification:	Sampled – No Asbestos Detected	
Approx. quantity:	5M2	
Accessibility	N/A	<i>Assessment Score</i>
Product type:	N/A	N/A
Extent of Damage:	N/A	N/A
Surface Treatment:	N/A	N/A
Asbestos type:	N/A	N/A
Material Assessment Score:		N/A
Priority Assessment Score:		N/A
Action:	N/A	
Comments:	Located to Cupboard	

Document Name	Author	Issued by	Revision Number	Issue Date	Page No
2019	Alishia Lewis	Armour AS	0	04/12/2019	69



Item No: 48

Sample No: N/A

Location: First Floor – Loft Space above 1.17



Material Description:	Visual Inspection – No Suspect Materials Found	
Identification:	N/A	
Approx. quantity:	N/A	
Accessibility	N/A	<i>Assessment Score</i>
Product type:	N/A	N/A
Extent of Damage:	N/A	N/A
Surface Treatment:	N/A	N/A
Asbestos type:	N/A	N/A
Material Assessment Score:		N/A
Priority Assessment Score:		N/A
Action:	N/A	
Comments:	Limited Access into Loft as no Crawlboards Available	

Document Name	Author	Issued by	Revision Number	Issue Date	Page No
2019	Alishia Lewis	Armour AS	0	04/12/2019	70



Item No: 55

Sample No: N/A

Location: Ground Floor – Tyre Store 0.40



Material Description:	Visual Inspection – No Suspect Materials Found	
Identification:	N/A	
Approx. quantity:	N/A	
Accessibility	N/A	<i>Assessment Score</i>
Product type:	N/A	N/A
Extent of Damage:	N/A	N/A
Surface Treatment:	N/A	N/A
Asbestos type:	N/A	N/A
Material Assessment Score:		N/A
Priority Assessment Score:		N/A
Action:	N/A	
Comments:	N/A	

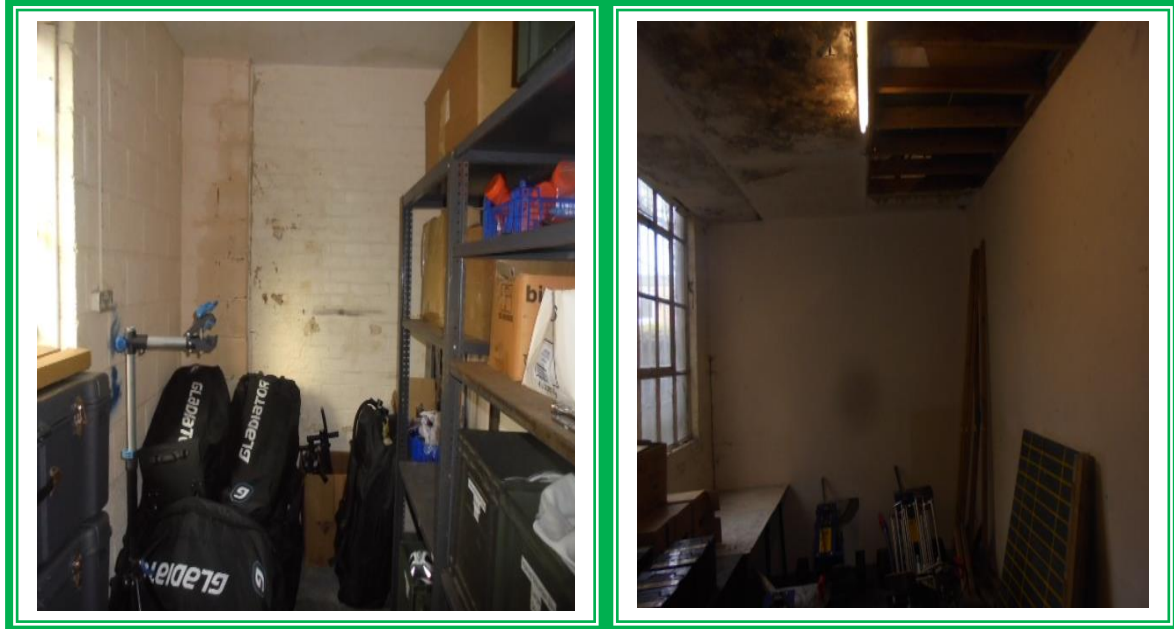
Document Name	Author	Issued by	Revision Number	Issue Date	Page No
2019	Alishia Lewis	Armour AS	0	04/12/2019	71



Item No: 56

Sample No: N/A

Location: Building 7 – Stores X 2



Material Description:	Visual Inspection – No Suspect Materials Found	
Identification:	N/A	
Approx. quantity:	N/A	
Accessibility	N/A	<i>Assessment Score</i>
Product type:	N/A	N/A
Extent of Damage:	N/A	N/A
Surface Treatment:	N/A	N/A
Asbestos type:	N/A	N/A
Material Assessment Score:		N/A
Priority Assessment Score:		N/A
Action:	N/A	
Comments:	N/A	

Document Name	Author	Issued by	Revision Number	Issue Date	Page No
2019	Alishia Lewis	Armour AS	0	04/12/2019	72



Item No: 58

Sample No: N/A

Location: Building 7 – Cage and Store



Material Description:	Visual Inspection – No Suspect Materials Found	
Identification:	N/A	
Approx. quantity:	N/A	
Accessibility	N/A	<i>Assessment Score</i>
Product type:	N/A	N/A
Extent of Damage:	N/A	N/A
Surface Treatment:	N/A	N/A
Asbestos type:	N/A	N/A
Material Assessment Score:		N/A
Priority Assessment Score:		N/A
Action:	N/A	
Comments:	N/A	

Document Name	Author	Issued by	Revision Number	Issue Date	Page No
2019	Alishia Lewis	Armour AS	0	04/12/2019	73



Item No: 65

Sample No: N/A

Location: Building 4 – Garage Stores X 2



Material Description:	Visual Inspection – No Suspect Materials Found	
Identification:	N/A	
Approx. quantity:	N/A	
Accessibility	N/A	<i>Assessment Score</i>
Product type:	N/A	N/A
Extent of Damage:	N/A	N/A
Surface Treatment:	N/A	N/A
Asbestos type:	N/A	N/A
Material Assessment Score:		N/A
Priority Assessment Score:		N/A
Action:	N/A	
Comments:	N/A	

Document Name	Author	Issued by	Revision Number	Issue Date	Page No
2019	Alishia Lewis	Armour AS	0	04/12/2019	74



Item No: 68

Sample No: N/A

Location: Range



Material Description:	Visual Inspection – No Suspect Materials Found	
Identification:	N/A	
Approx. quantity:	N/A	
Accessibility	N/A	<i>Assessment Score</i>
Product type:	N/A	N/A
Extent of Damage:	N/A	N/A
Surface Treatment:	N/A	N/A
Asbestos type:	N/A	N/A
Material Assessment Score:		N/A
Priority Assessment Score:		N/A
Action:	N/A	
Comments:	N/A	

Document Name	Author	Issued by	Revision Number	Issue Date	Page No
2019	Alishia Lewis	Armour AS	0	04/12/2019	75



Item No: 69

Sample No: N/A

Location: Main Building – Under Stairs Store



Material Description:	Visual Inspection – No Suspect Materials Found	
Identification:	N/A	
Approx. quantity:	N/A	
Accessibility	N/A	<i>Assessment Score</i>
Product type:	N/A	N/A
Extent of Damage:	N/A	N/A
Surface Treatment:	N/A	N/A
Asbestos type:	N/A	N/A
Material Assessment Score:		N/A
Priority Assessment Score:		N/A
Action:	N/A	
Comments:	N/A	

Document Name	Author	Issued by	Revision Number	Issue Date	Page No
2019	Alishia Lewis	Armour AS	0	04/12/2019	76

**Item No: 71****Sample No: N/A****Location: Main Building – Ground Floor – Men's Toilets and Showers**

No Photo Available – See plan for location

Material Description:	Visual Inspection – No Suspect Materials Found	
Identification:	N/A	
Approx. quantity:	N/A	
Accessibility	N/A	<i>Assessment Score</i>
Product type:	N/A	N/A
Extent of Damage:	N/A	N/A
Surface Treatment:	N/A	N/A
Asbestos type:	N/A	N/A
Material Assessment Score:		N/A
Priority Assessment Score:		N/A
Action:	N/A	
Comments:	N/A	

Document Name	Author	Issued by	Revision Number	Issue Date	Page No
2019	Alishia Lewis	Armour AS	0	04/12/2019	77

Section 6: Survey Objectives

Instructions were received from Sue Morrell of Wessex RFCA to carry out a Management asbestos survey at 7th Battalion, The Rifles C, Dorset BH12 5AD in accordance with HSG264 and Armour Analytical's quality procedures.

The survey was carried out over two days on Thursday 7th and 21st November 2019 by David Kelly with the objective of facilitating a Management report.

This Management survey is characterised as a 'Visual Inspection Sampling and Identification Survey' in HSG264. This type of survey is used to locate and describe, so far as is reasonably practicable, all asbestos containing materials (ACMs) in the building and will by its nature involve the partial destruction of the building's fabric as access is gained to all areas. A full sampling programme is undertaken to identify possible ACMs and estimate the extent of ACMs reported.

The objective of this survey report is to identify, so far as is reasonably practicable, the location, extent, product type and composition of ACMS within the building to enable the building occupants to put management and remedial procedures in place.

Document Name	Author	Issued by	Revision Number	Issue Date	Page No
2019	Alishia Lewis	Armour AS	0	04/12/2019	78

Section 7: Survey Techniques

Each floor, room and area within the scope was systematically inspected for suspect materials thought or known to contain asbestos and where such materials were encountered their location, extent, and composition were recorded.

Where materials of a similar nature exist, to those previously sampled, and a reasoned argument can be made that their composition is likely to be identical further physical sampling was not undertaken.

Photographs were taken of all sample locations, unless otherwise stated.

The analysis of suspect ACMs was undertaken by a UKAS accredited laboratory using the analytical method detailed in *HSG248, Appendix 2 -Asbestos: The analysts' guide for sampling, analysis and clearance procedures*.

Document Name	Author	Issued by	Revision Number	Issue Date	Page No
2019	Alishia Lewis	Armour AS	0	04/12/2019	79

Section 8: Survey Caveat

This report is based upon a management report inspection of an unfamiliar site. During the course of the survey all reasonable efforts were made to identify the physical presence of materials containing asbestos within the building.

A Management Survey is a non-intrusive survey, meaning that access within the fabric of the building is limited. The survey does not include access to the following areas (unless agreed beforehand with the Client and provisions are put in place):

- Within wall or ceiling construction;
- Under fixed flooring;
- Within non-openable boxings;
- Within live electrics, boilers or machinery;
- Where access/visibility is limited in an area due to stored items, furniture or services;
- Areas where there is no safe access to inspect such as floor ducts, lift shafts and loft spaces with no crawlboards;
- High level areas that are too high to safely inspect.
- Within pipework insulation throughout building as this would affect the integrity of services.

Any intrusive works carried out within the building must first be subject to a Refurbishment Asbestos Survey.

This report will be restricted to the areas that fall within the scope of works for project and will not take into account any area's that do not fall within the scope. Any asbestos that is identified within this report will need to be added to the buildings existing information and should not form the basis for a management survey. This survey will not include priority assessments nor will it include a register.

This survey considered the construction of the building, associated fixtures & fittings and associated structures and in no way should it be considered as a ground investigation report.

Services should be disconnected prior to commencement of a Management survey; however, where plant and/or electrical installations are live or appear to be live then these will not be accessed.

This survey report is not a bill of quantities.

Document Name	Author	Issued by	Revision Number	Issue Date	Page No
2019	Alishia Lewis	Armour AS	0	04/12/2019	80

Section 9: Survey Notes

This report has been written with reference to the various Guidance Notes etc, issued, and current at the date of this report and describes circumstances at the site on the date the investigation took place.

Where similar items exist in the building, only one or two samples have been taken to ascertain the material content. It was assumed that similar products were of the same material.

Any person undertaking work within the buildings should be told of the presence of asbestos. This briefing also applies to any other person associated with the site, including staff, sub-contractors and others.

The drawings in the report are not to scale and are illustrative only to indicate approximate locations. The descriptions used are for location identification purposes.

All the recommendations described in this report are based upon assumptions made after consideration of the type of material, condition of the material, its location, analysis result and type of use the area is thought to be subjected to. However, statutory authorities or others could require amendments based on local knowledge, change in legislation, change in use or indeed other conditions or criteria.

Samples taken from floor tiles (or similar material) may include a bitumen adhesive as part of the sample. It is known that some proprietary brands of bitumen have an asbestos content and this will be included as an integral part of the bulk sample unless otherwise stated.

Document Name	Author	Issued by	Revision Number	Issue Date	Page No
2019	Alishia Lewis	Armour AS	0	04/12/2019	81

Section 10: Material Assessment Algorithm

Variable	Score	Examples
Installation / Product type	1	Vinyl, 'Bakelite', Cement
	2	Asbestos insulating board, paper, rope
	3	Pipe insulation, spray coating, friable debris
Condition / damage	0	Good
	1	Slight / minor damage
	2	Moderate damage – breakage to surface treatment
	3	Major damage – smashed or exposed material
Surface treatment	0	Non-friable e.g. vinyl
	1	Enclosed insulation, encapsulated AIB
	2	Unsealed AIB, encapsulated insulation
	3	Unsealed insulation or spray coating
Asbestos type	1	Chrysotile
	2	Amosite & other amphiboles
	3	Crocidolite

The scores from each of the four sections are added together to produce a risk score:

Risk score	Risk assessment
10 or more	High risk
7 – 9	Medium risk
5 – 6	Low risk
4 & below	Negligible risk

Document Name	Author	Issued by	Revision Number	Issue Date	Page No
2019	Alishia Lewis	Armour AS	0	04/12/2019	82



Section 11: Certificates of Bulk Analysis



Our Ref: J179316 FI: 18
Your Ref: 2481
Date: 26/11/2019

ENVIROCHEM
Analytical Laboratories Ltd.
12 The Gardens
Broadcut, Fareham
Hampshire
PO16 8SS



Tel: (01329) 287777
Fax: (01329) 287755
www.envirochem.co.uk
office@envirochem.co.uk

Asbestos Fibre Identification Report

Client: Armour Analytical Services Ltd
Admirals Yard, Station Road, Patchway, Bristol, BS34 6LR
Site Address: 7th Battalion, Poole TA Centre, Wallisdown Road, BH12 5AD
Sampled By: Armour Analytical Services Ltd
Date sampled/received: 12th November 2019
Date analysed: 12th November 2019 - 26th November 2019
Analyst/s: Bradley Travis, Ewelina Kowalczyk Pariyar
Analysis Location: 12 The Gardens, Broadcut, Fareham, Hampshire, PO16 8SS

ANALYTICAL PROCEDURE

Fibre identification was carried out in accordance with the documented 'in-house' method (2.01) based on the HSE Guidance Note HSG 248. These employed stereo microscopy, polarized microscopy and dispersion staining techniques.

RESULTS

Sample No.	Sample Ref.	Location	Asbestos Detected	Asbestos Type
DK/1	BS585726	Main Building - Lobby 0.01, Insulating board wall panels	No	
DK/2	BS585727	Main Building - Offices 0.02 & 0.03, Floor tiles & adhesive	Yes	Chrysotile
DK/3	BS585728	Main Building - Drill Hall 0.37 Bitumen under parquet flooring	No	
DK/4	BS585729	Main Building - Ladies WC 0.14, Floor tiles and adhesive	No	

NOTES:

- Sample(s) were analysed for the presence of 8 types of asbestos fibre: crocidolite (blue), amosite (brown), chrysotile (white), actinolite (light), anthophyllite, actinolite and tremolite.
- The results shown in this report specifically refer to the sample(s) tested as received unless otherwise stated and samples collected by the client are analysed using information provided by the client. For samples collected by the client the date of receipt is stated on the form as the date analysed.
- Envirotech is a UKAS accredited laboratory for sampling and identification of asbestos containing materials.
- Comments, observations and opinions are outside the scope of UKAS accreditation.
- The analytical method in the HSG248 does not quantify the amount of asbestos present, therefore UKAS accreditation does not permit quantification.
- If, during fibre identification, only 1 or 2 fibres are seen and identified as asbestos, then the term 'trace asbestos identified' is used.
- This report shall not be reproduced except in full, without written approval of Envirotech.

SIGNATURE:

Ewelina Kowalczyk

Authorised signatory

PRINT NAME: Ewelina Kowalczyk Pariyar

Reg. No. 2378228 England. Registered Office: Envirochem, 12 The Gardens, Broadcut, Fareham, Hampshire, PO16 8SS.

Page 1 of 5

Document Name	Author	Issued by	Revision Number	Issue Date	Page No
2019	Alishia Lewis	Armour AS	0	04/12/2019	83



ARMOUR
ANALYTICAL SERVICES



Our Ref: J179316 FI- 18
Your Ref: 2481
Date: 26/11/2019

ENVIROCHEM
Analytical Laboratories Ltd.
12 The Gardens
Broadcut, Fareham
Hampshire
PO16 8SS



1227

Tel: (01329) 287777
Fax: (01329) 287755
www.envirochem.co.uk
office@envirochem.co.uk

Asbestos Fibre Identification Report

Client: Armour Analytical Services Ltd
Admirals Yard, Station Road, Patchway, Bristol, BS34 6LR
Site Address: 7th Battalion, Poole TA Centre, Wallisdown Road, BH12 5AD
Sampled By: Armour Analytical Services Ltd
Date sampled/received: 12th November 2019
Date analysed: 12th November 2019 - 26th November 2019
Analyst/s: Bradley Travis, Ewelina Kowalczyk Pariyar
Analysis Location: 12 The Gardens, Broadcut, Fareham, Hampshire, PO16 8SS

ANALYTICAL PROCEDURE

Fibre identification was carried out in accordance with the documented 'in-house' method (2.01) based on the HSE Guidance Note HSG 248. These employed stereo microscopy, polarized microscopy and dispersion staining techniques.

RESULTS

Sample No.	Sample Ref.	Location	Asbestos Detected	Asbestos Type
DK/5	BS585730	Main Building - Lobby 0.12, Floor tiles and adhesive	Yes	Chrysotile
DK/6	BS585731	Main Building - Boiler Room and Store 0.17 and 0.18	No	
DK/7	BS585732	Main Building - Boiler Room B.02, Gaskets	No	
DK/8	BS585733	Main Building - Bar 0.22, Textured coating to ceiling	No	

NOTES:

1. Sample(s) were examined for the presence of 6 types of asbestos fibre: crocidolite (blue), amosite (brown), chrysotile (white), actinolite, anthophyllite, actinolite and tremolite.
2. The results shown in this report specifically refer to the sample(s) noted as received unless otherwise stated and samples collected by the client are evaluated using information provided by the client. For samples collected by the client the date of receipt is shown in brackets at the end of the sample description.
3. Envirochem is a UKAS accredited laboratory for sampling and identification of asbestos containing materials.
4. Comments, observations and opinions are outside the scope of UKAS accreditation.
5. The analytical method in the HSG248 does not quantify the amount of asbestos present, therefore UKAS accreditation does not permit quantification.
6. If, during fibre identification, only 1 or 2 fibres are seen and identified as asbestos, then the term 'trace asbestos identified' is used.
7. This report shall not be reproduced except in full, without written approval of Envirochem.

SIGNATURE:

Kowalczyk

Authorised signatory

PRINT NAME: Ewelina Kowalczyk Pariyar

Reg. No. 2378228 England. Registered Office: Envirochem, 12 The Gardens, Broadcut, Fareham, Hampshire, PO16 8SS.

Page 2 of 5

Document Name	Author	Issued by	Revision Number	Issue Date	Page No
2019	Alishia Lewis	Armour AS	0	04/12/2019	84



ARMOUR
ANALYTICAL SERVICES



Our Ref: J179316 FL: 18
Your Ref: 2481
Date: 26/11/2019

ENVIROCHEM
Analytical Laboratories Ltd.
12 The Gardens
Broadcut, Fareham
Hampshire
PO16 8SS



Tel: (01329) 287777
Fax: (01329) 287755
www.envirochem.co.uk
office@envirochem.co.uk

Asbestos Fibre Identification Report

Client: Armour Analytical Services Ltd
Admirals Yard, Station Road, Patchway, Bristol, BS34 6LR

Site Address: 7th Battalion, Poole TA Centre, Wallisdown Road, BH12 5AD

Sampled By: Armour Analytical Services Ltd

Date sampled/received: 12th November 2019

Date analysed: 12th November 2019 - 26th November 2019

Analyst/s: Bradley Travis, Ewelina Kowalczyk Pariyar

Analysis Location: 12 The Gardens, Broadcut, Fareham, Hampshire, PO16 8SS

ANALYTICAL PROCEDURE

Fibre identification was carried out in accordance with the documented 'in-house' method (2.01) based on the HSE Guidance Note HSG 248. These employed stereo microscopy, polarized microscopy and dispersion staining techniques.

RESULTS

Sample No.	Sample Ref.	Location	Asbestos Detected	Asbestos Type
DK/9	BS385734	Main Building - Store 0.36, Floor tiles and adhesive	Yes	Chrysotile
DK/10	BS385735	Main Building - Store 0.36, Sink pad	Yes	Chrysotile
DK/11	BS385736	Main Building - Store 0.36, Textured coating to ceiling	No	
DK/12	BS385737	Main Building - Rooms 1.20, 1.21, 1.22, 1.24	Yes	Chrysotile

NOTES:

1. Samples were examined for the presence of 8 types of asbestos fibres: crocidolite (blue), amosite (brown), chrysotile (white), actinolite, anthophyllite, actinolite and tremolite.
2. The results shown in this test report specifically refer to the sample(s) tested as received unless otherwise stated and samples collected by the client are evaluated using information provided by the client. For samples collected by the client the date of receipt is deemed to be the same as the date sampled.
3. Eurochem is a UKAS accredited laboratory for sampling and identification of asbestos containing materials.
4. Comments, observations and opinions are outside the scope of UKAS accreditation.
5. The analytical method in the HSG248 does not quantify the amount of asbestos present, therefore UKAS accreditation does not permit quantification.
6. If, during fibre identification, only 1 or 2 fibres are seen and identified as asbestos, then the term 'trace asbestos identified' is used.
7. This report shall not be reproduced except in full, without written approval of Eurochem.

SIGNATURE:

Kowalczyk

Authorised signatory

PRINT NAME: Ewelina Kowalczyk Pariyar

Reg. No. 2378228 England. Registered Office: Envirochem, 12 The Gardens, Broadcut, Fareham, Hampshire, PO16 8SS.

Page 3 of 5

Document Name	Author	Issued by	Revision Number	Issue Date	Page No
2019	Alishia Lewis	Armour AS	0	04/12/2019	85



ARMOUR
ANALYTICAL SERVICES



Our Ref: J179316 FI: 18
Your Ref: 2481
Date: 26/11/2019

ENVIROCHEM
Analytical Laboratories Ltd.
12 The Gardens
Broadcut, Fareham
Hampshire
PO16 8SS



Tel: (01329) 287777
Fax: (01329) 287755
www.envirochem.co.uk
office@envirochem.co.uk

Asbestos Fibre Identification Report

Client: Armour Analytical Services Ltd
Admirals Yard, Station Road, Patchway, Bristol, BS34 6LR
Site Address: 7th Battalion, Poole TA Centre, Wallisdown Road, BH12 5AD
Sampled By: Armour Analytical Services Ltd
Date sampled/received: 12th November 2019
Date analysed: 12th November 2019 - 26th November 2019
Analyst/s: Bradley Travis, Ewelina Kowalczyk Pariyar
Analysis Location: 12 The Gardens, Broadcut, Fareham, Hampshire, PO16 8SS

ANALYTICAL PROCEDURE

Fibre identification was carried out in accordance with the documented 'in-house' method (2.01) based on the HSE Guidance Note HSG 248. These employed stereo microscopy, polarized microscopy and dispersion staining techniques.

RESULTS

Sample No.	Sample Ref.	Location	Asbestos Detected	Asbestos Type
DK/13	BS585738	Main Building - Office 1.23, textured coating to ceiling	No	
DK/14	BS585739	Main Building - Office 1.24, Textured coating to ceiling	No	
DK/15	BS585740	Main Building - Office 1.25 Cupboard, Cement wall and door header panels	No	
DK/16	BS585741	Main Building - Corridor 1.27, Floor tiles and adhesive	Yes	Chrysotile

NOTES:

1. Sample(s) were examined for the presence of 6 types of asbestos fibres: crocidolite (blue), amosite (brown), chrysotile (white), actinolite, anthophyllite, actinolite and hornblende.
2. The results shown in this report specifically refer to the sample(s) listed as material whose asbestos status and sample collected by the client are evaluated using information provided by the client. For samples collected by the client the date of receipt is stated to be the same as the date sampled.
3. Envirochem is a UKAS accredited laboratory for the sampling and identification of asbestos containing materials.
4. Comments, observations and opinions are outside the scope of UKAS accreditation.
5. The analytical method in the HSG248 does not quantify the amount of asbestos present, therefore UKAS accreditation does not permit quantification.
6. If, during fibre identification, only 1 or 2 fibres are seen and identified as asbestos, then the term 'few asbestos identified' is used.
7. This report shall not be reproduced except in full, without written approval of Envirochem.

SIGNATURE:

Ewelina Kowalczyk

Authorized signatory

PRINT NAME: Ewelina Kowalczyk Pariyar

Reg. No. 2378228 England. Registered Office: Envirochem, 12 The Gardens, Broadcut, Fareham, Hampshire, PO16 8SS.

Page 4 of 5

Document Name	Author	Issued by	Revision Number	Issue Date	Page No
2019	Alishia Lewis	Armour AS	0	04/12/2019	86



ARMOUR
ANALYTICAL SERVICES



Our Ref: J179316 FI: 18

Your Ref: 2481

Date: 26/11/2019

ENVIROCHEM

Analytical Laboratories Ltd.

12 The Gardens

Broadcut, Fareham

Hampshire

PO16 8SS



1227

Tel: (01329) 287777

Fax: (01329) 287755

www.envirochem.co.uk

office@envirochem.co.uk

Asbestos Fibre Identification Report

Client: Armour Analytical Services Ltd
Admirals Yard, Station Road, Patchway, Bristol, BS34 6LR

Site Address: 7th Battalion, Poole TA Centre, Wallisdown Road, BH12 5AD

Sampled By: Armour Analytical Services Ltd

Date sampled/received: 12th November 2019

Date analysed: 12th November 2019 - 26th November 2019

Analyst/s: Bradley Travis, Ewelina Kowalczyk Pariyar

Analysis Location: 12 The Gardens, Broadcut, Fareham, Hampshire, PO16 8SS

ANALYTICAL PROCEDURE

Fibre identification was carried out in accordance with the documented 'in-house' method (2.01) based on the HSE Guidance Note HSG 248. These employed stereo microscopy, polarized microscopy and dispersion staining techniques.

RESULTS

Sample No.	Sample Ref.	Location	Asbestos Detected	Asbestos Type
DK/17	BS588633	Building 7, External, Cement Downpipe	Yes	Chrysotile
DK/18	BS588634	Building 4, Bitumen damp proof course	Yes	Chrysotile

NOTES:

1. Sample(s) were examined for the presence of 6 types of asbestos fibre: crocidolite (blue), amosite (brown), chrysotile (pink), actinolite, anthophyllite, actinolite and vermiculite.
2. The results shown in this report specifically refer to the sample(s) listed as received unless otherwise stated and samples collected by the client are analysed using information provided by the client. For samples collected by the client the date of receipt is stated at the start of the data presented.
3. Envirochem is a UKAS accredited laboratory for sampling and identification of asbestos containing materials.
4. Comments, observations and opinions are outside the scope of UKAS accreditation.
5. The analytical method in the HSG248 does not quantify the amount of asbestos present, therefore UKAS accreditation does not permit quantification.
6. If, during fibre identification, only 1 or 2 fibres are seen and identified as asbestos, then the term 'trace asbestos identified' is used.
7. This report shall not be reproduced except in full, without written approval of Envirochem.

SIGNATURE:

Kowalczyk

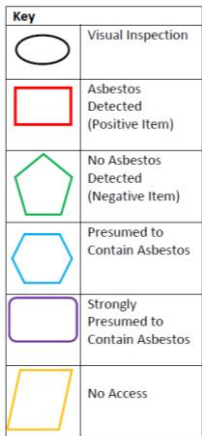
Authorised signatory

PRINT NAME: Ewelina Kowalczyk Pariyar

Reg. No. 2378228 England. Registered Office: Envirochem, 12 The Gardens, Broadcut, Fareham, Hampshire, PO16 8SS.







Page 5 of 5

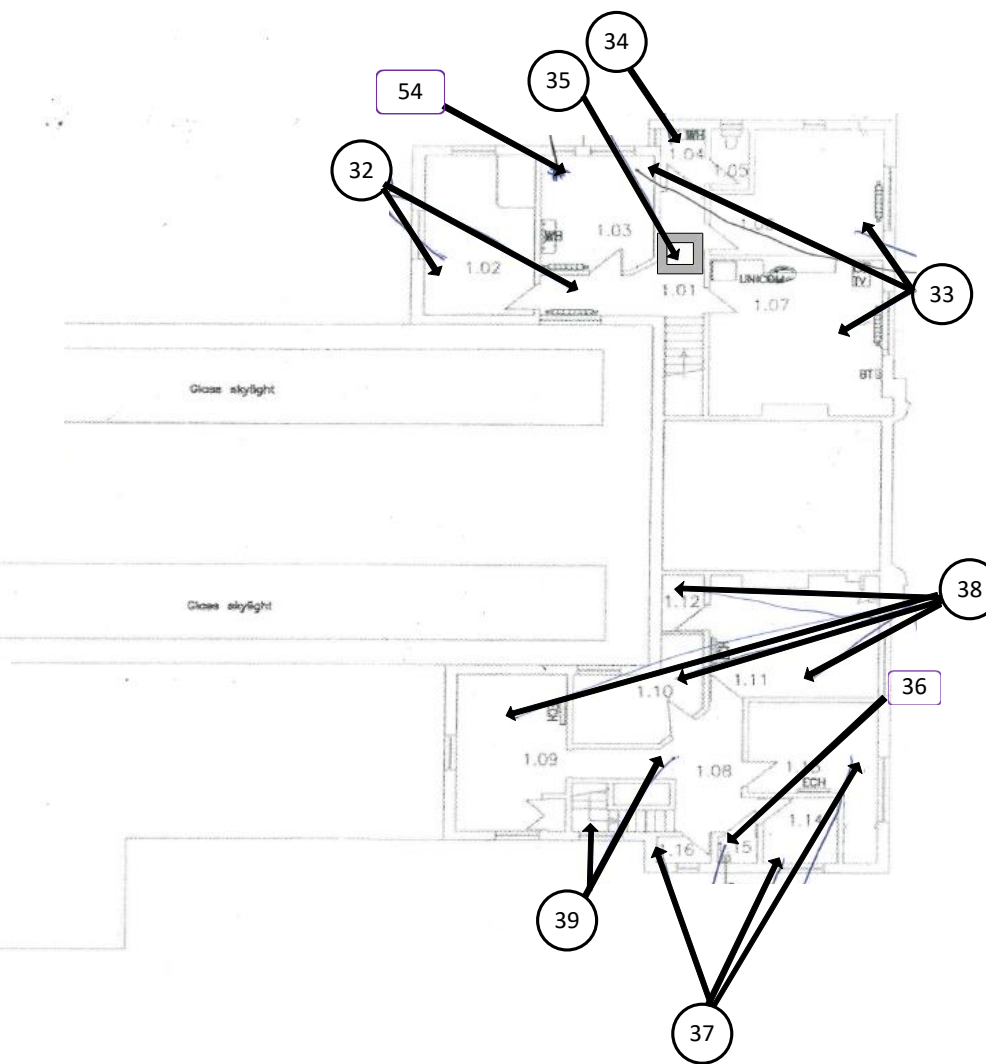
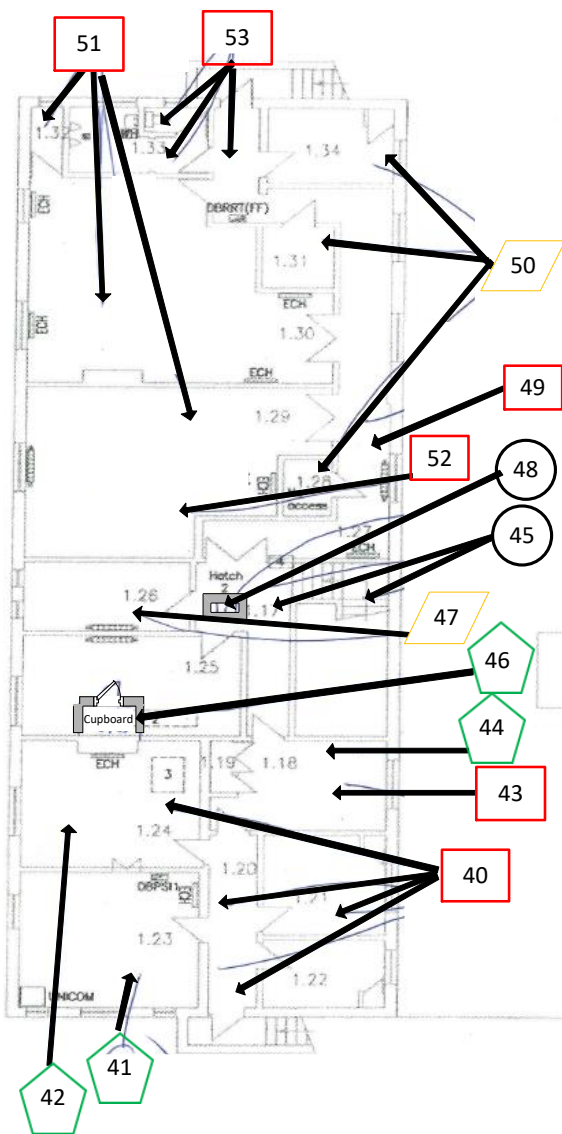
Document Name	Author	Issued by	Revision Number	Issue Date	Page No
2019	Alishia Lewis	Armour AS	0	04/12/2019	87



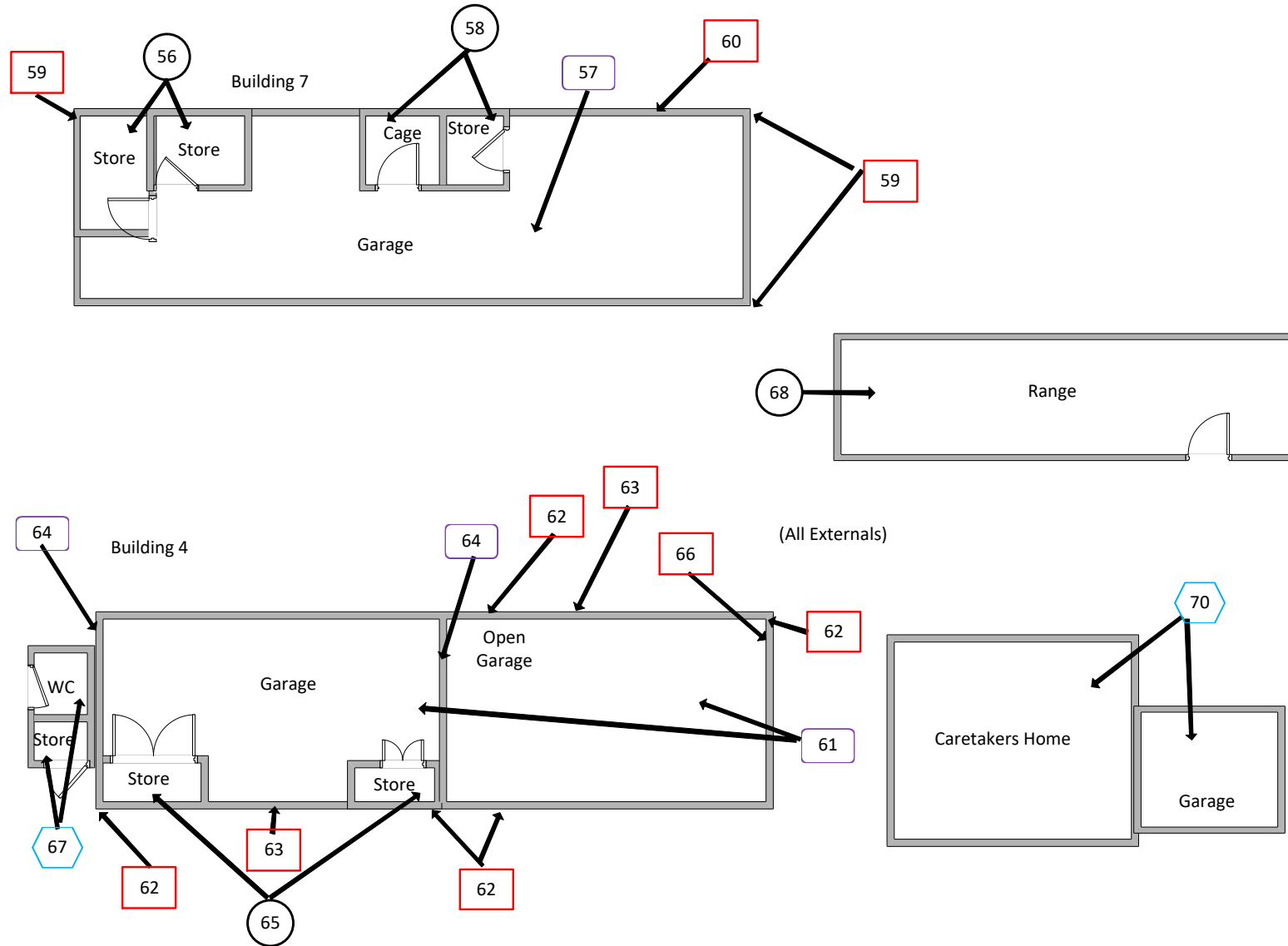
Document Name	Author	Issued by	Revision Number	Issue Date	Page No
2019	Alishia Lewis	Armour AS	0	04/12/2019	88







First Floor

Key	
	Visual Inspection
	Asbestos Detected (Positive Item)
	No Asbestos Detected (Negative Item)
	Presumed to Contain Asbestos
	Strongly Presumed to Contain Asbestos
	No Access



Document Name	Author	Issued by	Revision Number	Issue Date	Page No
2019	Alishia Lewis	Armour AS	0	04/12/2019	89



Key	
	Visual Inspection
	Asbestos Detected (Positive Item)
	No Asbestos Detected (Negative Item)
	Presumed to Contain Asbestos
	Strongly Presumed to Contain Asbestos
	No Access

Document Name	Author	Issued by	Revision Number	Issue Date	Page No
2019	Alishia Lewis	Armour AS	0	04/12/2019	90



ARMOUR
ANALYTICAL SERVICES

I the surveyor can confirm that this report is accurate to my findings onsite and this survey has been Content checked by myself.

Checked by: David Kelly

Date: 03/12/2019

I the Admin Manager can confirm that this report is accurate to the paperwork received and this survey has been quality checked by myself.

Checked by:

Date:

Report Compiled By

Armour Analytical Services Ltd, Admirals Yard, Station Road, Bristol, BS34 6LR

Document Name	Author	Issued by	Revision Number	Issue Date	Page No
2019	Alishia Lewis	Armour AS	0	04/12/2019	91