



ARMOUR
ANALYTICAL SERVICES

Project Number 2481

**Management
Asbestos Survey Report**

**675 Army Air Corps, Yeovil, Somerset,
BA21 4JA**



Working in Partnership with Shield Environmental Services



Document Name	Author	Issued by	Revision Number	Issue Date	Page No
2019	Emma Humphreys	Armour AS	0	28/06/2019	1

Contents

Section	
1	Contacts & Authorisation
2	Executive Summary
3	Site Description & Survey Information
4	Positive and Presumed Photos Sheets
5	Negative Photos Sheets
6	Survey Objectives
7	Survey Techniques
8	Survey Caveat
9	Survey Notes
10	Material Assessment Algorithm
11	Certificates of Bulk Analysis
12	Site Plan


Document Name	Author	Issued by	Revision Number	Issue Date	Page No
2019	Emma Humphreys	Armour AS	0	28/06/2019	2



Section 1: Contact Details

Client Details:		Instructing Party:	
Wessex RFCA Mount House Mount Street Taunton TA1 3QE		Shield Environmental Shield House Caxton Business Park Crown Way Bristol BS30 8XJ	
Contact Name:	Sue Morrell	Contact Name:	Chloe Smith
Tel: 01823250115	Fax: N/A	Tel: 01173012650	Fax: N/A

Site Address:		Report Author:	
675 Army Air Corps Yeovil Somerset BA21 4JA		Armour Analytical Services Admirals Yard Station Road Bristol BS34 6LR	
Contact Name:	Brandon Smith	Contact Name:	David Kelly
Tel: 01823354570	Fax: N/A	Mobile: 07769707519	

Lead Surveyor's Name:	Lead Surveyor's Authorising Signature:
D. Kelly	

Document Name	Author	Issued by	Revision Number	Issue Date	Page No
2019	Emma Humphreys	Armour AS	0	28/06/2019	3

Section 2: Executive Summary

Sample Number	Sample Type	Location	Analysis
DK/1	Roof Felt	Loft Space above corridor	N.A.D.I.S
DK/2	Damp Proof Course	External	N.A.D.I.S

N.A.D.I.S – No Asbestos Detected in Sample

The following items have been Presumed to be Asbestos Containing Materials as they were not accessible at the time of the survey:

Item 8 – Drill Hall – Rope Seals to skylights – No access to sample due to the height
 Item 32 – External (House) – Soffit Boards - No access to sample due to the height

The presence of asbestos in these areas cannot be ascertained at this time. If any works are to be carried out in these areas in the future, then these works should be approached cautiously.

In accordance with current legislation, any suspect materials encountered in these areas are to be assumed to contain asbestos until proven otherwise. This will normally involve cessation of works in the affected area.

Document Name	Author	Issued by	Revision Number	Issue Date	Page No
2019	Emma Humphreys	Armour AS	0	28/06/2019	4



Section 3: Site Description & Survey Information

Brief description on the general building construction

Brick and block construction with a pitched tiled roof.

Caveat for no access areas

No access to inspect the high-level roof areas.

EXTERNAL MATERIALS

Roof Type	Pitched
Roof Materials	Tiled
Soffits	No Access – Presumed to Contain Asbestos
Fascia	Timber
Walls	Brick
Verge Under cloaking	N/A
Guttering	Plastic
Downpipes	Plastic
Window/Door frames	UPVC
Other Materials	N/A

INTERNAL MATERIALS

Loft Insulation	Fiberglass
Roof Underlining	Non-Asbestos Felt
Ceilings	Plasterboard, Lath and Plaster, Concrete
Walls <i>Internal</i>	Plasterboard, Brick
Floors	Lino, Carpet, Screed
Doors/Frames	Timber, Metal
Pipework/Insulation	Hessian, MMMF
Boxings	Timber, MDF
Boiler Make	Modern Boiler
Flue Pipes	Metal
Storage Heaters	Radiators
Electrical Boxes/Machinery	Modern Electrics
Ducting/Risers	N/A
Stairs	Timber, Concrete
Lift Shafts	N/A
Other Materials	N/A

Document Name	Author	Issued by	Revision Number	Issue Date	Page No
2019	Emma Humphreys	Armour AS	0	28/06/2019	5

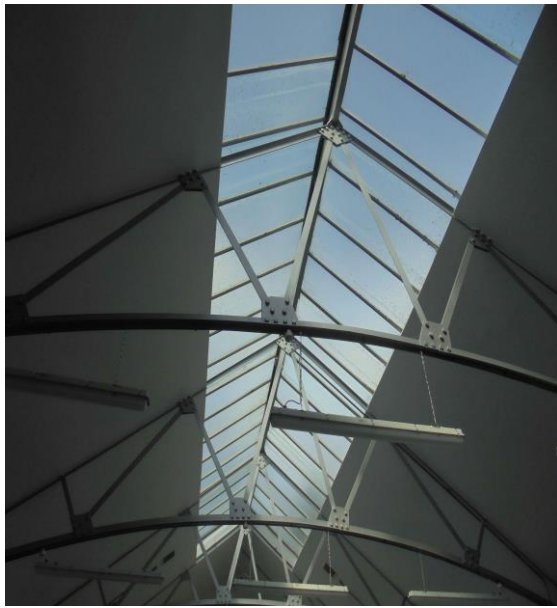


Section 4: Positive and Presumed Photos Sheets

Item No: 8

Sample No: N/A

Location: Drill Hall



Material Description:	Rope seal within metal skylights	
Identification:	Presumed to Contain Asbestos	
Approx. quantity:	55M2 of Glazing	
Accessibility	Low	<i>Assessment Score</i>
Product type:	No Access	2
Extent of Damage:	No Access	1
Surface Treatment:	No Access	1
Asbestos type:	No Access	1
Material Assessment Score:		5
Priority Assessment Score:		Low
Action:	Manage	
Comments:	No access to sample due to height	

Document Name	Author	Issued by	Revision Number	Issue Date	Page No
2019	Emma Humphreys	Armour AS	0	28/06/2019	6

**Item No: 32****Sample No: N/A****Location: External**

Material Description:	Soffit Boards	
Identification:	Presumed to Contain Asbestos	
Approx. quantity:	24LM	
Accessibility	Low	<i>Assessment Score</i>
Product type:	No Access	2
Extent of Damage:	No Access	1
Surface Treatment:	No Access	1
Asbestos type:	No Access	2
Material Assessment Score:		5
Priority Assessment Score:		Low
Action:	Manage	
Comments:	No access to sample due to height	

Document Name	Author	Issued by	Revision Number	Issue Date	Page No
2019	Emma Humphreys	Armour AS	0	28/06/2019	7



Section 5: Negative Photos Sheets

Item No: 1

Sample No: N/A

**Location: First Floor – Admin Office, Corridor,
Recruitment Office and cupboard**



Material Description:	Visual Inspection – No Suspect Materials Found	
Identification:	N/A	
Approx. quantity:	N/A	
Accessibility	N/A	<i>Assessment Score</i>
Product type:		N/A
Extent of Damage:		N/A
Surface Treatment:		N/A
Asbestos type:		N/A
Material Assessment Score:		N/A
Priority Assessment Score:		N/A
Action:	N/A	
Comments:	No access above the suspended ceiling in the recruitment office cupboards as services fixed into tiles. No access under timber carpet underlay throughout	

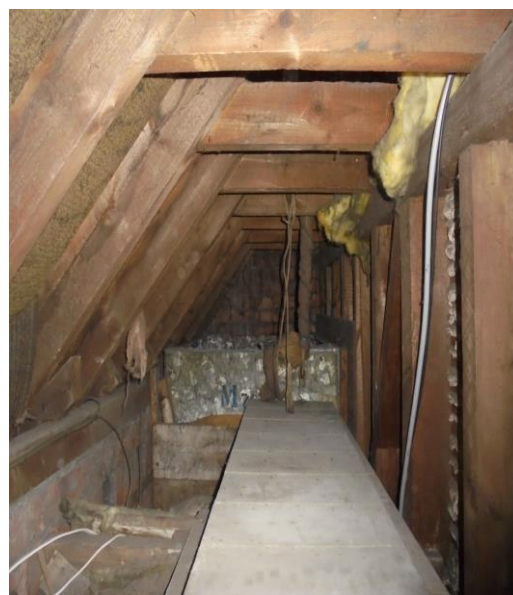
Document Name	Author	Issued by	Revision Number	Issue Date	Page No
2019	Emma Humphreys	Armour AS	0	28/06/2019	8



Item No: 2

Sample No: DK/1

Location: Loft Space Above the Corridor



Material Description:	Felt to underside of the roof	
Identification:	Sampled – No Asbestos Detected	
Approx. quantity:	10M2 Visible	
Accessibility	N/A	<i>Assessment Score</i>
Product type:		N/A
Extent of Damage:		N/A
Surface Treatment:		N/A
Asbestos type:		N/A
Material Assessment Score:		N/A
Priority Assessment Score:		N/A
Action:	N/A	
Comments:	Non-asbestos hessian pipework insulation	

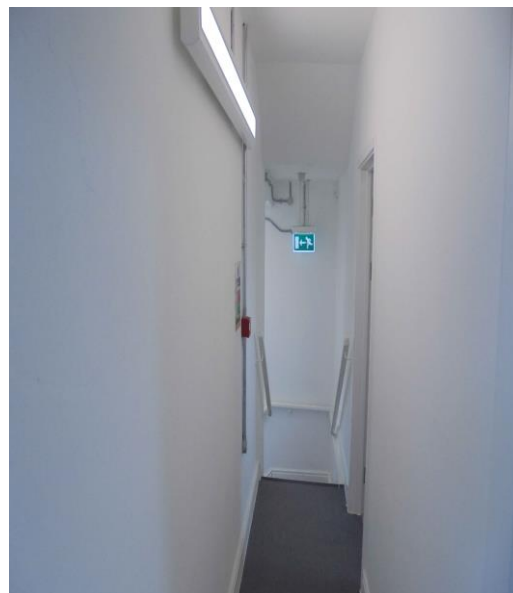
Document Name	Author	Issued by	Revision Number	Issue Date	Page No
2019	Emma Humphreys	Armour AS	0	28/06/2019	9



Item No: 3

Sample No: N/A

Location: First Floor - Corridor



Material Description:	Visual Inspection – No Suspect Materials Found	
Identification:	N/A	
Approx. quantity:	N/A	
Accessibility	N/A	<i>Assessment Score</i>
Product type:		N/A
Extent of Damage:		N/A
Surface Treatment:		N/A
Asbestos type:		N/A
Material Assessment Score:		N/A
Priority Assessment Score:		N/A
Action:	N/A	
Comments:	Modern Stair Nosing	

Document Name	Author	Issued by	Revision Number	Issue Date	Page No
2019	Emma Humphreys	Armour AS	0	28/06/2019	10

**Item No: 4****Sample No: N/A****Location: First Floor - WC**

Material Description:	Visual Inspection – No Suspect Materials Found	
Identification:	N/A	
Approx. quantity:	N/A	
Accessibility	N/A	<i>Assessment Score</i>
Product type:		N/A
Extent of Damage:		N/A
Surface Treatment:		N/A
Asbestos type:		N/A
Material Assessment Score:		N/A
Priority Assessment Score:		N/A
Action:	N/A	
Comments:	Modern Water Heater	

Document Name	Author	Issued by	Revision Number	Issue Date	Page No
2019	Emma Humphreys	Armour AS	0	28/06/2019	11



Item No: 5

Sample No: N/A

Location: Ground Floor – Lecture Rooms 1 and 2 and cupboard



Material Description:	Visual Inspection – No Suspect Materials Found	
Identification:	N/A	
Approx. quantity:	N/A	
Accessibility	N/A	<i>Assessment Score</i>
Product type:		N/A
Extent of Damage:		N/A
Surface Treatment:		N/A
Asbestos type:		N/A
Material Assessment Score:		N/A
Priority Assessment Score:		N/A
Action:	N/A	
Comments:	MDF Boxing. Modern pipework insulation	

Document Name	Author	Issued by	Revision Number	Issue Date	Page No
2019	Emma Humphreys	Armour AS	0	28/06/2019	12



Item No: 6

Sample No: N/A

Location: Ground Floor – Lecture Room Lobby



Material Description:	Visual Inspection – No Suspect Materials Found	
Identification:	N/A	
Approx. quantity:	N/A	
Accessibility	N/A	<i>Assessment Score</i>
Product type:		N/A
Extent of Damage:		N/A
Surface Treatment:		N/A
Asbestos type:		N/A
Material Assessment Score:		N/A
Priority Assessment Score:		N/A
Action:	N/A	
Comments:	Modern Electrics	

Document Name	Author	Issued by	Revision Number	Issue Date	Page No
2019	Emma Humphreys	Armour AS	0	28/06/2019	13

**Item No: 7****Sample No: N/A****Location: Ground Floor – Firing Range**

Material Description:	Visual Inspection – No Suspect Materials Found	
Identification:	N/A	
Approx. quantity:	N/A	
Accessibility	N/A	<i>Assessment Score</i>
Product type:		N/A
Extent of Damage:		N/A
Surface Treatment:		N/A
Asbestos type:		N/A
Material Assessment Score:		N/A
Priority Assessment Score:		N/A
Action:	N/A	
Comments:	N/A	

Document Name	Author	Issued by	Revision Number	Issue Date	Page No
2019	Emma Humphreys	Armour AS	0	28/06/2019	14



Item No: 9

Sample No: N/A

Location: Ground Floor – 105 Cupboard, AAC Store and Lobby



Material Description:	Visual Inspection – No Suspect Materials Found	
Identification:	N/A	
Approx. quantity:	N/A	
Accessibility	N/A	<i>Assessment Score</i>
Product type:		N/A
Extent of Damage:		N/A
Surface Treatment:		N/A
Asbestos type:		N/A
Material Assessment Score:		N/A
Priority Assessment Score:		N/A
Action:	N/A	
Comments:	No access within timber boxing in lobby	

Document Name	Author	Issued by	Revision Number	Issue Date	Page No
2019	Emma Humphreys	Armour AS	0	28/06/2019	15

**Item No: 10****Sample No: N/A****Location: Ground Floor - Kitchen**

Material Description:	Visual Inspection – No Suspect Materials Found	
Identification:	N/A	
Approx. quantity:	N/A	
Accessibility	N/A	<i>Assessment Score</i>
Product type:		N/A
Extent of Damage:		N/A
Surface Treatment:		N/A
Asbestos type:		N/A
Material Assessment Score:		N/A
Priority Assessment Score:		N/A
Action:	N/A	
Comments:	No access within timber boxings. Modern sink pad, Modern electrics	

Document Name	Author	Issued by	Revision Number	Issue Date	Page No
2019	Emma Humphreys	Armour AS	0	28/06/2019	16



Item No: 11

Sample No: N/A

Location: Ground Floor – WC's x 4



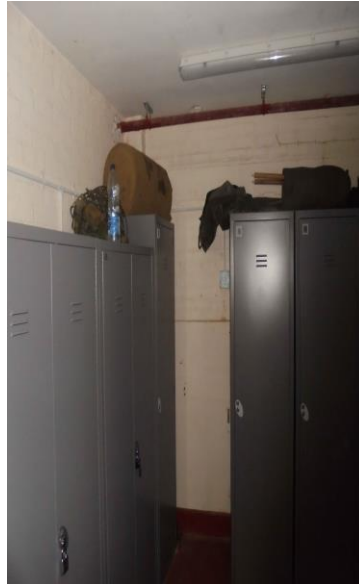
Material Description:	Visual Inspection – No Suspect Materials Found	
Identification:	N/A	
Approx. quantity:	N/A	
Accessibility	N/A	<i>Assessment Score</i>
Product type:		N/A
Extent of Damage:		N/A
Surface Treatment:		N/A
Asbestos type:		N/A
Material Assessment Score:		N/A
Priority Assessment Score:		N/A
Action:	N/A	
Comments:	Modern water heater	

Document Name	Author	Issued by	Revision Number	Issue Date	Page No
2019	Emma Humphreys	Armour AS	0	28/06/2019	17

**Item No: 12****Sample No: N/A****Location: Ground Floor – Circulation and Cupboard**

Material Description:	Visual Inspection – No Suspect Materials Found	
Identification:	N/A	
Approx. quantity:	N/A	
Accessibility	N/A	<i>Assessment Score</i>
Product type:		N/A
Extent of Damage:		N/A
Surface Treatment:		N/A
Asbestos type:		N/A
Material Assessment Score:		N/A
Priority Assessment Score:		N/A
Action:	N/A	
Comments:	N/A	

Document Name	Author	Issued by	Revision Number	Issue Date	Page No
2019	Emma Humphreys	Armour AS	0	28/06/2019	18

**Item No: 13****Sample No: N/A****Location: Ground Floor – Ammo Bunker, Armoury and Corridor**

Material Description:	Visual Inspection – No Suspect Materials Found	
Identification:	N/A	
Approx. quantity:	N/A	
Accessibility	N/A	<i>Assessment Score</i>
Product type:		N/A
Extent of Damage:		N/A
Surface Treatment:		N/A
Asbestos type:		N/A
Material Assessment Score:		N/A
Priority Assessment Score:		N/A
Action:	N/A	
Comments:	Limited access to inspect rooms due to lockers	

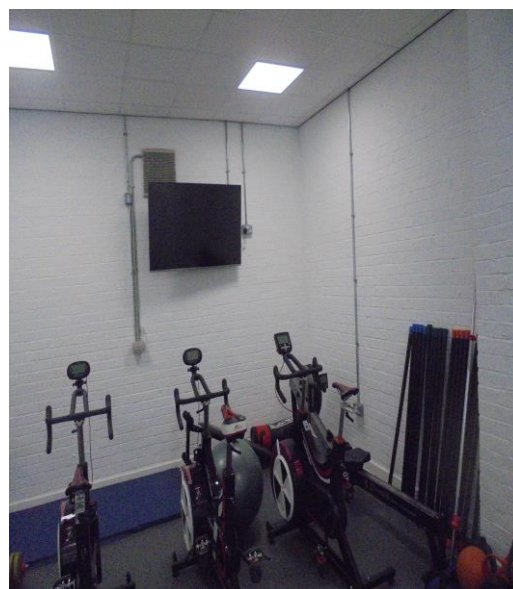
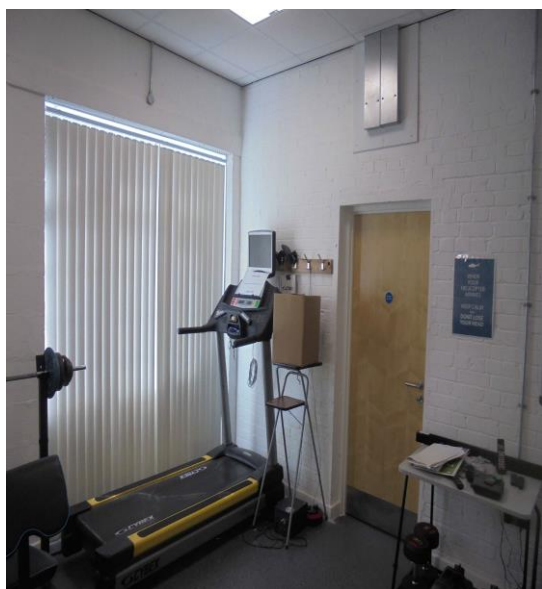
Document Name	Author	Issued by	Revision Number	Issue Date	Page No
2019	Emma Humphreys	Armour AS	0	28/06/2019	19



Item No: 14

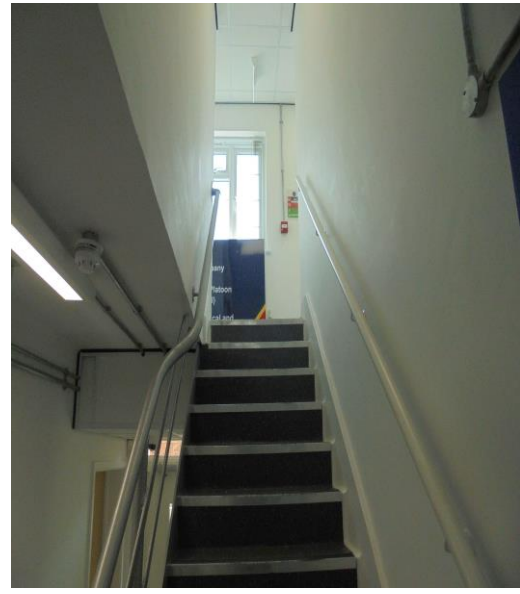
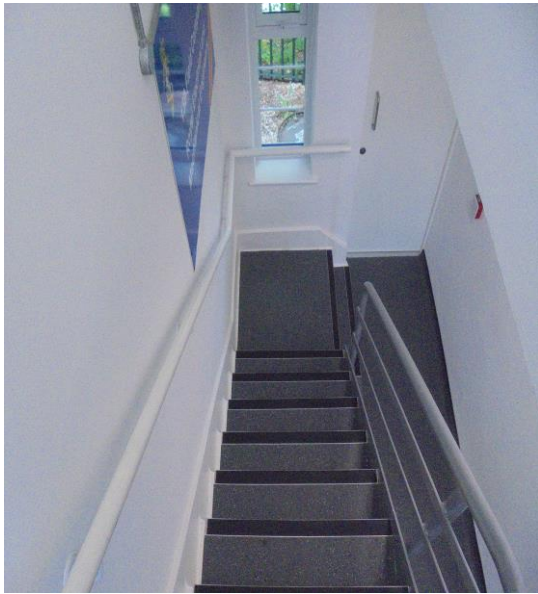
Sample No: N/A

Location: Ground Floor – Gym



Material Description:	Visual Inspection – No Suspect Materials Found	
Identification:	N/A	
Approx. quantity:	N/A	
Accessibility	N/A	<i>Assessment Score</i>
Product type:		N/A
Extent of Damage:		N/A
Surface Treatment:		N/A
Asbestos type:		N/A
Material Assessment Score:		N/A
Priority Assessment Score:		N/A
Action:	N/A	
Comments:	N/A	

Document Name	Author	Issued by	Revision Number	Issue Date	Page No
2019	Emma Humphreys	Armour AS	0	28/06/2019	20

**Item No: 15****Sample No: N/A****Location: Stairwell**

Material Description:	Visual Inspection – No Suspect Materials Found	
Identification:	N/A	
Approx. quantity:	N/A	
Accessibility	N/A	<i>Assessment Score</i>
Product type:		N/A
Extent of Damage:		N/A
Surface Treatment:		N/A
Asbestos type:		N/A
Material Assessment Score:		N/A
Priority Assessment Score:		N/A
Action:	N/A	
Comments:	Modern Stair Nosing	

Document Name	Author	Issued by	Revision Number	Issue Date	Page No
2019	Emma Humphreys	Armour AS	0	28/06/2019	21

**Item No: 16****Sample No: N/A****Location: Mess Room/Bar**

Material Description:	Visual Inspection – No Suspect Materials Found	
Identification:	N/A	
Approx. quantity:	N/A	
Accessibility	N/A	<i>Assessment Score</i>
Product type:		N/A
Extent of Damage:		N/A
Surface Treatment:		N/A
Asbestos type:		N/A
Material Assessment Score:		N/A
Priority Assessment Score:		N/A
Action:	N/A	
Comments:	Modern sink. No access under the parquet flooring. Limited access into the ceiling void due to height level of insulation. modern electrics	

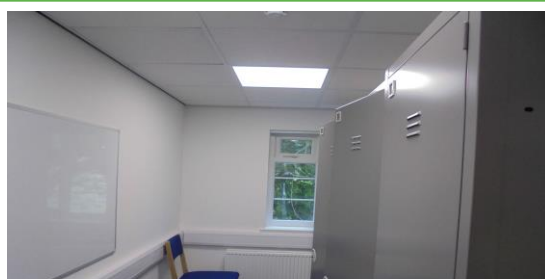
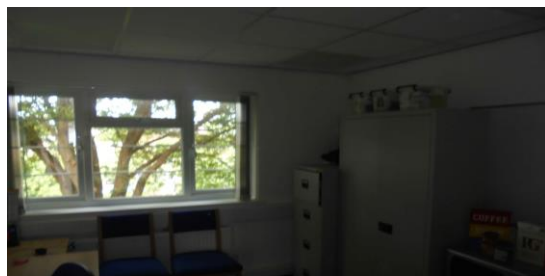
Document Name	Author	Issued by	Revision Number	Issue Date	Page No
2019	Emma Humphreys	Armour AS	0	28/06/2019	22



Item No: 17

Sample No: N/A

Location: First Floor - Offices x 4



Material Description:	Visual Inspection – No Suspect Materials Found	
Identification:	N/A	
Approx. quantity:	N/A	
Accessibility	N/A	<i>Assessment Score</i>
Product type:		N/A
Extent of Damage:		N/A
Surface Treatment:		N/A
Asbestos type:		N/A
Material Assessment Score:		N/A
Priority Assessment Score:		N/A
Action:	N/A	
Comments:	Limited access above the suspended ceiling due to high level of insulation	

Document Name	Author	Issued by	Revision Number	Issue Date	Page No
2019	Emma Humphreys	Armour AS	0	28/06/2019	23



Item No: 18

Sample No: N/A

Location: First Floor – Circulation



Material Description:	Visual Inspection – No Suspect Materials Found	
Identification:	N/A	
Approx. quantity:	N/A	
Accessibility	N/A	<i>Assessment Score</i>
Product type:		N/A
Extent of Damage:		N/A
Surface Treatment:		N/A
Asbestos type:		N/A
Material Assessment Score:		N/A
Priority Assessment Score:		N/A
Action:	N/A	
Comments:	Modern stair nosing. Limited access above the suspended ceiling due to high level of insulation	

Document Name	Author	Issued by	Revision Number	Issue Date	Page No
2019	Emma Humphreys	Armour AS	0	28/06/2019	24

**Item No: 19****Sample No: N/A****Location: First Floor – Offices**

Material Description:	Visual Inspection – No Suspect Materials Found	
Identification:	N/A	
Approx. quantity:	N/A	
Accessibility	N/A	<i>Assessment Score</i>
Product type:		N/A
Extent of Damage:		N/A
Surface Treatment:		N/A
Asbestos type:		N/A
Material Assessment Score:		N/A
Priority Assessment Score:		N/A
Action:	N/A	
Comments:	N/A	

Document Name	Author	Issued by	Revision Number	Issue Date	Page No
2019	Emma Humphreys	Armour AS	0	28/06/2019	25



Item No: 20

Sample No: N/A

Location: Store



Material Description:	Visual Inspection – No Suspect Materials Found	
Identification:	N/A	
Approx. quantity:	N/A	
Accessibility	N/A	<i>Assessment Score</i>
Product type:		N/A
Extent of Damage:		N/A
Surface Treatment:		N/A
Asbestos type:		N/A
Material Assessment Score:		N/A
Priority Assessment Score:		N/A
Action:	N/A	
Comments:	N/A	

Document Name	Author	Issued by	Revision Number	Issue Date	Page No
2019	Emma Humphreys	Armour AS	0	28/06/2019	26



Item No: 21

Sample No: N/A

Location: Boiler Room



Material Description:	Visual Inspection – No Suspect Materials Found	
Identification:	N/A	
Approx. quantity:	N/A	
Accessibility	N/A	<i>Assessment Score</i>
Product type:		N/A
Extent of Damage:		N/A
Surface Treatment:		N/A
Asbestos type:		N/A
Material Assessment Score:		N/A
Priority Assessment Score:		N/A
Action:	N/A	
Comments:	Modern Boilers, Pipework and gaskets	

Document Name	Author	Issued by	Revision Number	Issue Date	Page No
2019	Emma Humphreys	Armour AS	0	28/06/2019	27



Item No: 22

Sample No: DK/2

Location: External



Material Description:	Damp Proof Course	
Identification:	Sampled – No Asbestos Detected	
Approx. quantity:	To the Entire Perimeter	
Accessibility	N/A	<i>Assessment Score</i>
Product type:		N/A
Extent of Damage:		N/A
Surface Treatment:		N/A
Asbestos type:		N/A
Material Assessment Score:		N/A
Priority Assessment Score:		N/A
Action:	N/A	
Comments:	N/A	

Document Name	Author	Issued by	Revision Number	Issue Date	Page No
2019	Emma Humphreys	Armour AS	0	28/06/2019	28



Item No: 23

Sample No: N/A

Location: House – Lobby and WC's x 2



Material Description:	Visual Inspection – No Suspect Materials Found	
Identification:	N/A	
Approx. quantity:	N/A	
Accessibility	N/A	<i>Assessment Score</i>
Product type:		N/A
Extent of Damage:		N/A
Surface Treatment:		N/A
Asbestos type:		N/A
Material Assessment Score:		N/A
Priority Assessment Score:		N/A
Action:	N/A	
Comments:	No access within timber boxings	

Document Name	Author	Issued by	Revision Number	Issue Date	Page No
2019	Emma Humphreys	Armour AS	0	28/06/2019	29



Item No: 24

Sample No: N/A

Location: House – Kitchen and store



Material Description:	Visual Inspection – No Suspect Materials Found	
Identification:	N/A	
Approx. quantity:	N/A	
Accessibility	N/A	<i>Assessment Score</i>
Product type:		N/A
Extent of Damage:		N/A
Surface Treatment:		N/A
Asbestos type:		N/A
Material Assessment Score:		N/A
Priority Assessment Score:		N/A
Action:	N/A	
Comments:	N/A	

Document Name	Author	Issued by	Revision Number	Issue Date	Page No
2019	Emma Humphreys	Armour AS	0	28/06/2019	30

**Item No: 25****Sample No: N/A****Location: House – Ground Floor – Classroom 1**

Material Description:	Visual Inspection – No Suspect Materials Found	
Identification:	N/A	
Approx. quantity:	N/A	
Accessibility	N/A	<i>Assessment Score</i>
Product type:		N/A
Extent of Damage:		N/A
Surface Treatment:		N/A
Asbestos type:		N/A
Material Assessment Score:		N/A
Priority Assessment Score:		N/A
Action:	N/A	
Comments:	N/A	

Document Name	Author	Issued by	Revision Number	Issue Date	Page No
2019	Emma Humphreys	Armour AS	0	28/06/2019	31



Item No: 26

Sample No: N/A

Location: House - Lobby



Material Description:	Visual Inspection – No Suspect Materials Found	
Identification:	N/A	
Approx. quantity:	N/A	
Accessibility	N/A	<i>Assessment Score</i>
Product type:		N/A
Extent of Damage:		N/A
Surface Treatment:		N/A
Asbestos type:		N/A
Material Assessment Score:		N/A
Priority Assessment Score:		N/A
Action:	N/A	
Comments:	Modern electrics. No access within under stairs cupboard as it was sealed shut	

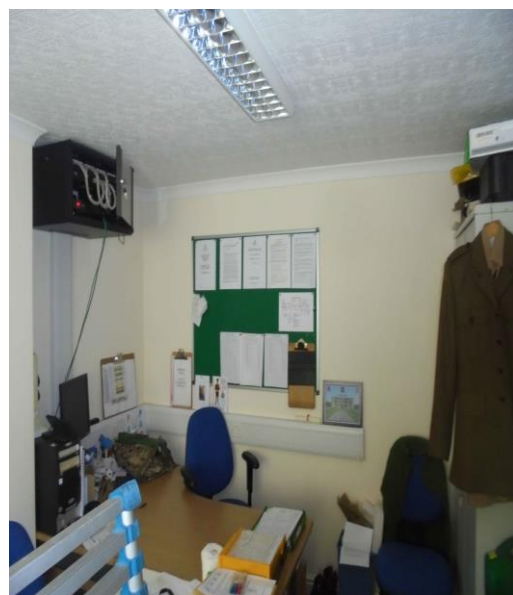
Document Name	Author	Issued by	Revision Number	Issue Date	Page No
2019	Emma Humphreys	Armour AS	0	28/06/2019	32



Item No: 27

Sample No: N/A

Location: House – Ground Floor – CO Office



Material Description:	Visual Inspection – No Suspect Materials Found	
Identification:	N/A	
Approx. quantity:	N/A	
Accessibility	N/A	<i>Assessment Score</i>
Product type:		N/A
Extent of Damage:		N/A
Surface Treatment:		N/A
Asbestos type:		N/A
Material Assessment Score:		N/A
Priority Assessment Score:		N/A
Action:	N/A	
Comments:	N/A	

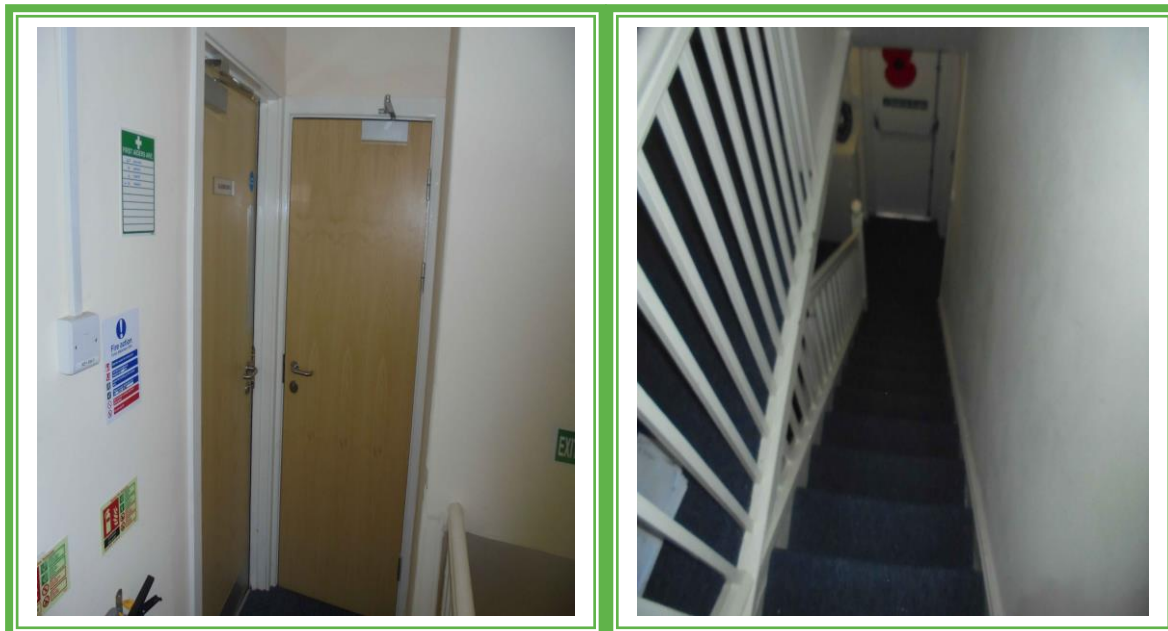
Document Name	Author	Issued by	Revision Number	Issue Date	Page No
2019	Emma Humphreys	Armour AS	0	28/06/2019	33



Item No: 28

Sample No: N/A

Location: First Floor – Stairwell and Landing



Material Description:	Visual Inspection – No Suspect Materials Found	
Identification:	N/A	
Approx. quantity:	N/A	
Accessibility	N/A	<i>Assessment Score</i>
Product type:		N/A
Extent of Damage:		N/A
Surface Treatment:		N/A
Asbestos type:		N/A
Material Assessment Score:		N/A
Priority Assessment Score:		N/A
Action:	N/A	
Comments:	N/A	

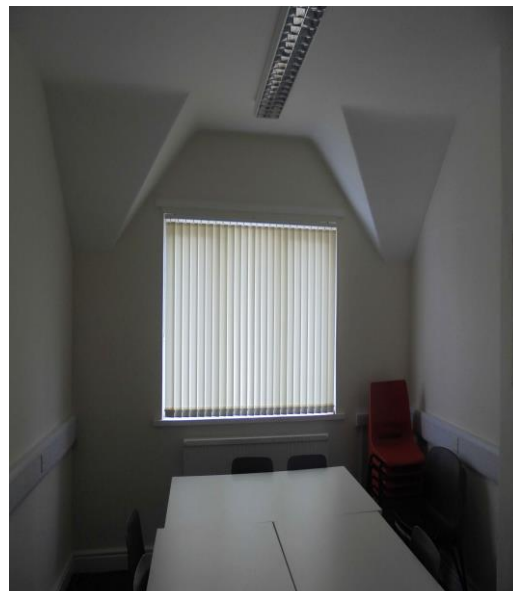
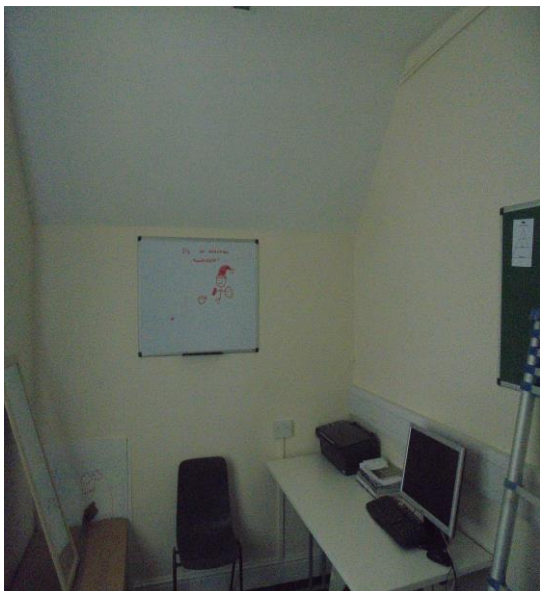
Document Name	Author	Issued by	Revision Number	Issue Date	Page No
2019	Emma Humphreys	Armour AS	0	28/06/2019	34



Item No: 29

Sample No: N/A

Location: House – First Floor – Classroom 2 and Admin Office



Material Description:	Visual Inspection – No Suspect Materials Found	
Identification:	N/A	
Approx. quantity:	N/A	
Accessibility	N/A	<i>Assessment Score</i>
Product type:		N/A
Extent of Damage:		N/A
Surface Treatment:		N/A
Asbestos type:		N/A
Material Assessment Score:		N/A
Priority Assessment Score:		N/A
Action:	N/A	
Comments:	N/A	

Document Name	Author	Issued by	Revision Number	Issue Date	Page No
2019	Emma Humphreys	Armour AS	0	28/06/2019	35



Item No: 30

Sample No: N/A

Location: House – First Floor – Classroom 2 and Store



Material Description:	Visual Inspection – No Suspect Materials Found	
Identification:	N/A	
Approx. quantity:	N/A	
Accessibility	N/A	<i>Assessment Score</i>
Product type:		N/A
Extent of Damage:		N/A
Surface Treatment:		N/A
Asbestos type:		N/A
Material Assessment Score:		N/A
Priority Assessment Score:		N/A
Action:	N/A	
Comments:	Modern Baxi boiler. Limited access into store due to stored items	

Document Name	Author	Issued by	Revision Number	Issue Date	Page No
2019	Emma Humphreys	Armour AS	0	28/06/2019	36



Item No: 31

Sample No: N/A

Location: House – Loft Space



Material Description:	Visual Inspection – No Suspect Materials Found	
Identification:	N/A	
Approx. quantity:	N/A	
Accessibility	N/A	<i>Assessment Score</i>
Product type:		N/A
Extent of Damage:		N/A
Surface Treatment:		N/A
Asbestos type:		N/A
Material Assessment Score:		N/A
Priority Assessment Score:		N/A
Action:	N/A	
Comments:	Limited access into loft due to lack of space. Non-asbestos roof felt	

Document Name	Author	Issued by	Revision Number	Issue Date	Page No
2019	Emma Humphreys	Armour AS	0	28/06/2019	37

Section 6: Survey Objectives

Instructions were received from Sue Morrell of Wessex RFCA to carry out a Management asbestos survey at 675 Army Air Corps, Yeovil, Somerset, BA21 4JA in accordance with HSG264 and Armour Analytical's quality procedures.

The survey was carried out on 5th June 2019 by David Kelly with the objective of facilitating a Management report.

This Management survey is characterised as a 'Visual Inspection Sampling and Identification Survey' in HSG264. This type of survey is used to locate and describe, so far as is reasonably practicable, all asbestos containing materials (ACMs) in the building and will by its nature involve the partial destruction of the building's fabric as access is gained to all areas. A full sampling programme is undertaken to identify possible ACMs and estimate the extent of ACMs reported.

The objective of this survey report is to identify, so far as is reasonably practicable, the location, extent, product type and composition of ACMS within the building to enable the building occupants to put management and remedial procedures in place.

Document Name	Author	Issued by	Revision Number	Issue Date	Page No
2019	Emma Humphreys	Armour AS	0	28/06/2019	38

Section 7: Survey Techniques

Each floor, room and area within the scope was systematically inspected for suspect materials thought or known to contain asbestos and where such materials were encountered their location, extent, and composition were recorded.

Where materials of a similar nature exist, to those previously sampled, and a reasoned argument can be made that their composition is likely to be identical further physical sampling was not undertaken.

Photographs were taken of all sample locations, unless otherwise stated.

The analysis of suspect ACMs was undertaken by a UKAS accredited laboratory using the analytical method detailed in *HSG248, Appendix 2 -Asbestos: The analysts' guide for sampling, analysis and clearance procedures*.

Document Name	Author	Issued by	Revision Number	Issue Date	Page No
2019	Emma Humphreys	Armour AS	0	28/06/2019	39

Section 8: Survey Caveat

This report is based upon a management report inspection of an unfamiliar site. During the course of the survey all reasonable efforts were made to identify the physical presence of materials containing asbestos within the building.

A Management Survey is a non-intrusive survey, meaning that access within the fabric of the building is limited. The survey does not include access to the following areas (unless agreed beforehand with the Client and provisions are put in place):

- Within wall or ceiling construction;
- Under fixed flooring;
- Within non-openable boxings;
- Within live electrics, boilers or machinery;
- Where access/visibility is limited in an area due to stored items, furniture or services;
- Areas where there is no safe access to inspect such as floor ducts, lift shafts and loft spaces with no crawlboards;
- High level areas that are too high to safely inspect.
- Within pipework insulation throughout building as this would affect the integrity of services.

Any intrusive works carried out within the building must first be subject to a Refurbishment Asbestos Survey.

This report will be restricted to the areas that fall within the scope of works for project and will not take into account any area's that do not fall within the scope. Any asbestos that is identified within this report will need to be added to the buildings existing information and should not form the basis for a management survey. This survey will not include priority assessments nor will it include a register.

This survey considered the construction of the building, associated fixtures & fittings and associated structures and in no way should it be considered as a ground investigation report.

Services should be disconnected prior to commencement of a Management survey; however, where plant and/or electrical installations are live or appear to be live then these will not be accessed.

This survey report is not a bill of quantities.

Document Name	Author	Issued by	Revision Number	Issue Date	Page No
2019	Emma Humphreys	Armour AS	0	28/06/2019	40

Section 9: Survey Notes

This report has been written with reference to the various Guidance Notes etc, issued, and current at the date of this report and describes circumstances at the site on the date the investigation took place.

Where similar items exist in the building, only one or two samples have been taken to ascertain the material content. It was assumed that similar products were of the same material.

Any person undertaking work within the buildings should be told of the presence of asbestos. This briefing also applies to any other person associated with the site, including staff, sub-contractors and others.

The drawings in the report are not to scale and are illustrative only to indicate approximate locations. The descriptions used are for location identification purposes.

All the recommendations described in this report are based upon assumptions made after consideration of the type of material, condition of the material, its location, analysis result and type of use the area is thought to be subjected to. However, statutory authorities or others could require amendments based on local knowledge, change in legislation, change in use or indeed other conditions or criteria.

Samples taken from floor tiles (or similar material) may include a bitumen adhesive as part of the sample. It is known that some proprietary brands of bitumen have an asbestos content and this will be included as an integral part of the bulk sample unless otherwise stated.

Document Name	Author	Issued by	Revision Number	Issue Date	Page No
2019	Emma Humphreys	Armour AS	0	28/06/2019	41

Section 10: Material Assessment Algorithm

Variable	Score	Examples
Installation / Product type	1	Vinyl, 'Bakelite', Cement
	2	Asbestos insulating board, paper, rope
	3	Pipe insulation, spray coating, friable debris
Condition / damage	0	Good
	1	Slight / minor damage
	2	Moderate damage – breakage to surface treatment
	3	Major damage – smashed or exposed material
Surface treatment	0	Non-friable e.g. vinyl
	1	Enclosed insulation, encapsulated AIB
	2	Unsealed AIB, encapsulated insulation
	3	Unsealed insulation or spray coating
Asbestos type	1	Chrysotile
	2	Amosite & other amphiboles
	3	Crocidolite

The scores from each of the four sections are added together to produce a risk score:

Risk score	Risk assessment
10 or more	High risk
7 – 9	Medium risk
5 – 6	Low risk
4 & below	Negligible risk

Document Name	Author	Issued by	Revision Number	Issue Date	Page No
2019	Emma Humphreys	Armour AS	0	28/06/2019	42



Section 11: Certificates of Bulk Analysis



Our Ref: J168901 FI: 2
Your Ref: 2481
Date: 10/06/2019

ENVIROCHEM
Analytical Laboratories Ltd.
12 The Gardens
Broadcut, Fareham
Hampshire
PO16 8SS



Tel: (01329) 287777
Fax: (01329) 287755
www.envirochem.co.uk
office@envirochem.co.uk

Asbestos Fibre Identification Report

Client: Armour Analytical Services Ltd
Admirals Yard, Station Road, Patchway, Bristol, BS34 6LR
Site Address: 675 Army Air Corps, Southville, Yeovil, Somerset, BA21 4JA
Sampled By: Armour Analytical Services Ltd
Date sampled/received: 7th June 2019
Date analysed: 10th June 2019
Analyst/s: Graham Bruce-Gardner
Analysis Location: Unit 20 Falcons Gate Northavon Business Centre Yate, Bristol, BS37 5NH

ANALYTICAL PROCEDURE

Fibre identification was carried out in accordance with the documented 'in-house' methods based on the HSE Guidance Note HSG 248. These employed stereo microscopy, polarized microscopy and dispersion staining techniques.

RESULTS

Sample No.	Sample Ref.	Location	Asbestos Detected	Asbestos Type
DK/1	BS556549	Loft space above corridor - Roof felt	No	
DJK/2	BS556550	External - Damp proof course	No	

NOTES:

1. Sample(s) were examined for the presence of 6 types of asbestos fibres: crocidolite (blue), amosite (brown), chrysotile (white), anthophyllite, actinolite and tremolite.
2. Samples collected by the client are evaluated using information provided by the client. For samples collected by the client the date of receipt is deemed to be the same as the date sampled.
3. Envirochem is a UKAS accredited laboratory for sampling and identification of asbestos containing materials.
4. Comments, observations and opinions are outside the scope of UKAS accreditation.
5. The analytical method in the HSG248 does not quantify the amount of asbestos present, therefore UKAS accreditation does not permit quantification.
6. If, during fibre identification, only 1 or 2 fibres are seen and identified as asbestos, then the term 'trace asbestos identified' is used.

SIGNATURE:

Authorised signatory

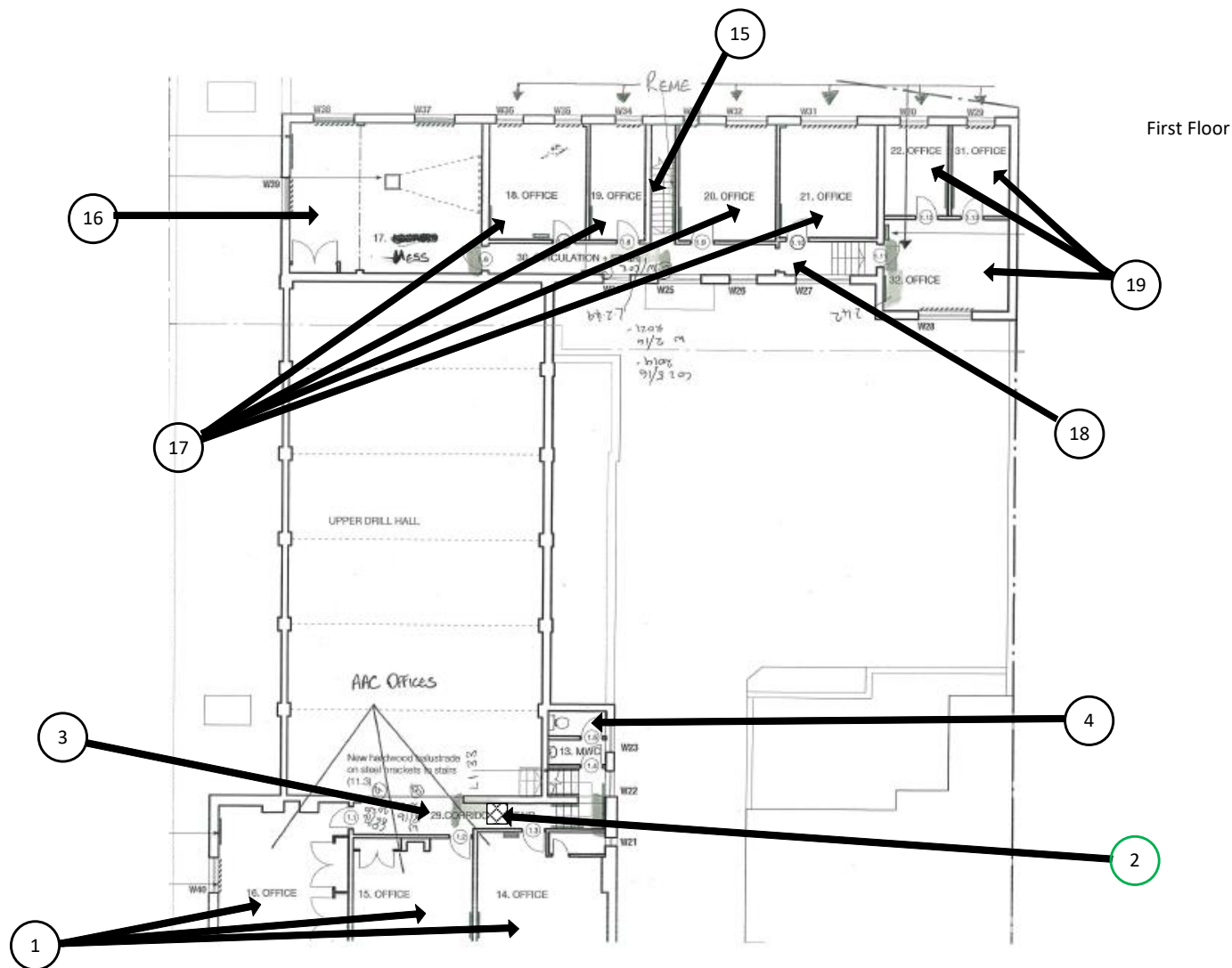
PRINT NAME: Graham Bruce-Gardner






Reg. No. 2378228 England. Registered Office: Envirochem, 12 The Gardens, Broadcut, Fareham, Hampshire, PO16 8SS.

Page 1 of 1






Document Name	Author	Issued by	Revision Number	Issue Date	Page No
2019	Emma Humphreys	Armour AS	0	28/06/2019	43

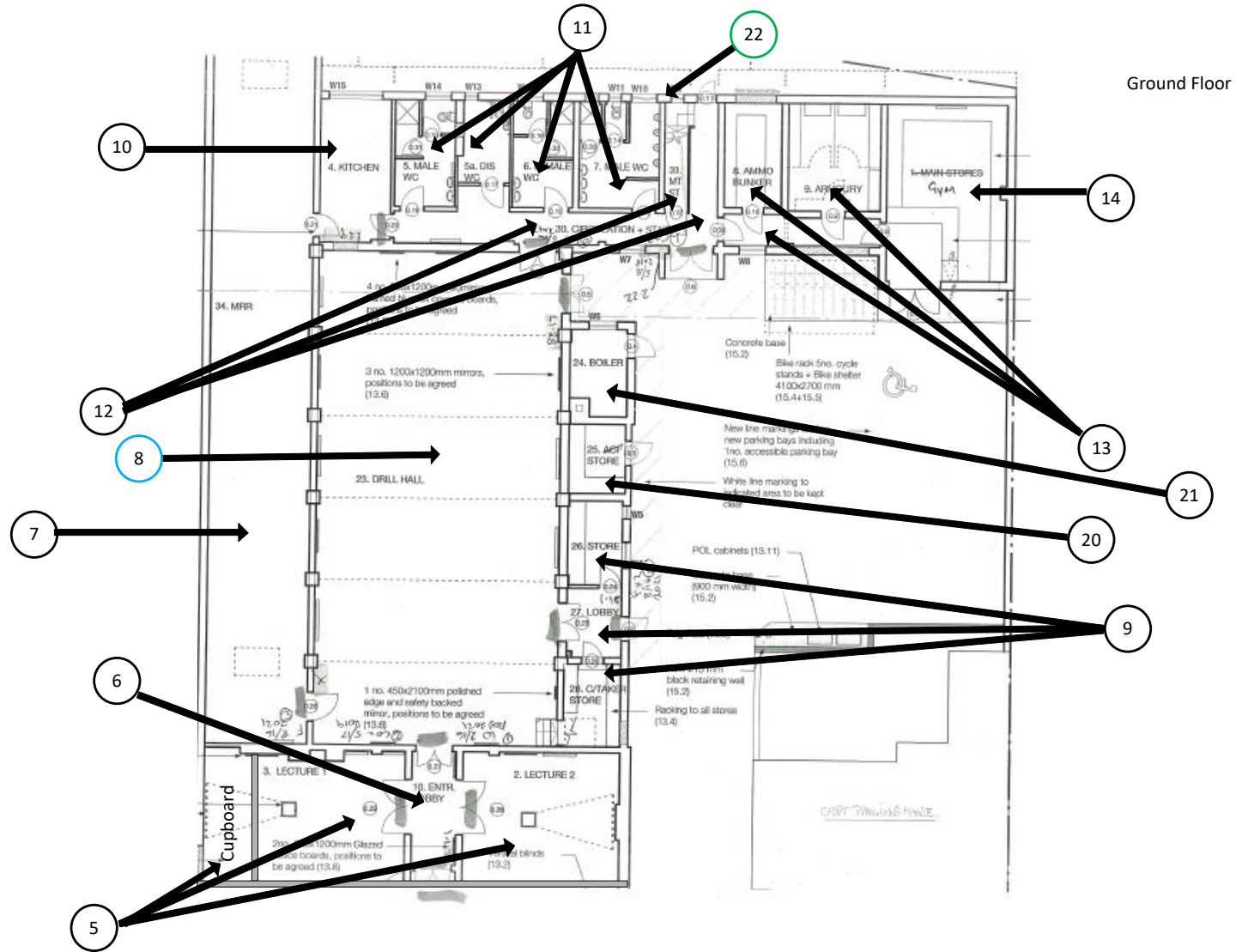
Section 12: Site Plan



KEY	
	Visual Inspection
	ACM's Detected (Positive Items)
	No ACM's Detected (Negative Items)
	Presumed to Contain ACM's
	No Access

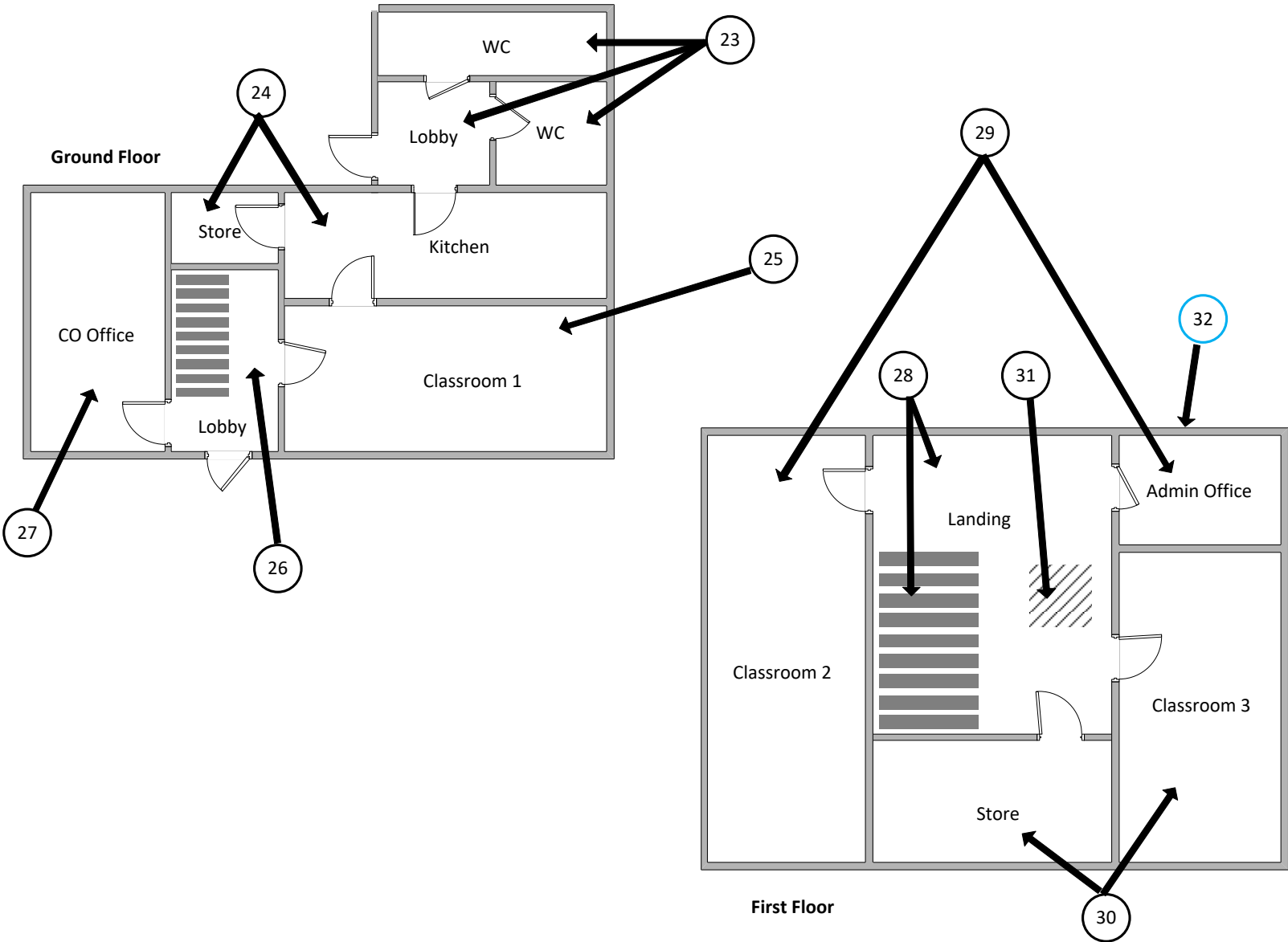
Document Name	Author	Issued by	Revision Number	Issue Date	Page No
2019	Emma Humphreys	Armour AS	0	28/06/2019	44






KEY	
	Visual Inspection
	ACM's Detected (Positive Items)
	No ACM's Detected (Negative Items)
	Presumed to Contain ACM's
	No Access



Document Name	Author	Issued by	Revision Number	Issue Date	Page No
2019	Emma Humphreys	Armour AS	0	28/06/2019	45

House



KEY	
	Visual Inspection
	ACM's Detected (Positive Items)
	No ACM's Detected (Negative Items)
	Presumed to Contain ACM's
	No Access

Document Name	Author	Issued by	Revision Number	Issue Date	Page No
2019	Emma Humphreys	Armour AS	0	28/06/2019	46

I the surveyor can confirm that this report is accurate to my findings onsite and this survey has been Content checked by myself.

Checked by: David Kelly

Date: 27/06/2019

I the Admin Manager can confirm that this report is accurate to the paperwork received and this survey has been quality checked by myself.

Checked by: Emma Humphreys

Date: 26.06.2019

Report Compiled By

Armour Analytical Services Ltd, Admirals Yard, Station Road, Bristol, BS34 6LR

Document Name	Author	Issued by	Revision Number	Issue Date	Page No
2019	Emma Humphreys	Armour AS	0	28/06/2019	47