



**ARMOUR**  
ANALYTICAL SERVICES

**Project Number 2481**

**Management  
Asbestos Survey Report**

**Royal Wessex Yeomanry, Salisbury, SP4 6BY**



*Working in Partnership with Shield Environmental Services*



Document Name	Author	Issued by	Revision Number	Issue Date	Page No
2019	Emma Humphreys	Armour AS	0	14/08/2019	1

## Contents

<b>Section</b>	
<b>1</b>	<b>Contacts &amp; Authorisation</b>
<b>2</b>	<b>Executive Summary</b>
<b>3</b>	<b>Site Description &amp; Survey Information</b>
<b>4</b>	<b>Positive and Presumed Photos Sheets</b>
<b>5</b>	<b>Negative Photos Sheets</b>
<b>6</b>	<b>Survey Objectives</b>
<b>7</b>	<b>Survey Techniques</b>
<b>8</b>	<b>Survey Caveat</b>
<b>9</b>	<b>Survey Notes</b>
<b>10</b>	<b>Material Assessment Algorithm</b>
<b>11</b>	<b>Certificates of Bulk Analysis</b>
<b>12</b>	<b>Site Plan</b>

Document Name	Author	Issued by	Revision Number	Issue Date	Page No
2019	Emma Humphreys	Armour AS	0	14/08/2019	2



## **Section 1: Contact Details**

<b>Client Details:</b>		<b>Instructing Party:</b>	
Wessex RFCA Mount House Mount Street Taunton TA1 3QE		Shield Environmental Shield House Caxton Business Park Crown Way Bristol BS30 8XJ	
<b>Contact Name:</b>	Sue Morrell	<b>Contact Name:</b>	Chloe Smith
<b>Tel:</b> 01823250115	<b>Fax:</b> N/A	<b>Tel:</b> 01173012650	<b>Fax:</b> N/A

<b>Site Address:</b>		<b>Report Author:</b>	
Royal Wessex Yeomanry B Salisbury SP4 6BY		Armour Analytical Services Admirals Yard Station Road Bristol BS34 6LR	
<b>Contact Name:</b>	Dave Oliver	<b>Contact Name:</b>	David Kelly
<b>Tel:</b> 01722438300	<b>Fax:</b> N/A	<b>Mobile:</b> 07769707519	

<b>Lead Surveyor's Name:</b>	<b>Lead Surveyor's Authorising Signature:</b>
D. Kelly	

Document Name	Author	Issued by	Revision Number	Issue Date	Page No
2019	Emma Humphreys	Armour AS	0	14/08/2019	3

## **Section 2: Executive Summary**

Sample Number	Sample Type	Location	Analysis
1	Kitchen Sink Pad	Recruit Reception Centre	Chrysotile
2	External Cement Roof Tiles	Storage Garage	Chrysotile
3	Insulation Board Wall Panels	Garage 8/Radio Store	N.A.D.I.S
4	Cement Roof Edging	Garages 1-11 - External	Chrysotile
5	Profiled Cement Roof	Armoured Truck Garage Covered Area – Profiled Cement Roof	Chrysotile/ Crocidolite
6	Cement Replacement Roof Tiles	Main Building – External	N.A.D.I.S
7	Bitumen Under Parquet Flooring	Main Building – Ladies – WC – First Floor	N.A.D.I.S
8	Sink Pad	Bars x 2 – First Floor	Chrysotile
9	Stair Nosing	Stairwell and Lobby – Ground Floor	N.A.D.I.S
10	Bitumen Under Parquet Flooring	Lobby – Ground Floor	N.A.D.I.S
11	Sink Pads	Kitchen – Ground Floor	Chrysotile
12	Panels to Door	Kitchen – Ground Floor	N.A.D.I.S
13	Insulation Board Ceiling	Boiler Room – Ground Floor	N.A.D.I.S
14	Gaskets	Boiler Room – Ground Floor	Chrysotile

N.A.D.I.S – No Asbestos Detected in Sample  
 A.D – Asbestos Detected

Document Name	Author	Issued by	Revision Number	Issue Date	Page No
2019	Emma Humphreys	Armour AS	0	14/08/2019	4

The following items have been Presumed to be Asbestos Containing Materials as they were not accessible at the time of the survey:

Item 9 – Garages 9, 10 and 11 – Profiled Cement Roof – No Safe Access to Sample  
 Item 11 – Garage 8/Radio Store – Flashguards – Unable to Sample as Presumed Live  
 Item 21 – Garages 1 – 11 – External – Electrical Panel – No Access to Sample as live  
 Item 27 – Armoured Truck Garage – Cement Ceiling Panels - No Safe Access to Sample due to height  
 Item 29 – Garage 14-26 - Cement Panels - No Safe Access to Sample due to height  
 Item 32 – AO Building – No access within building as locked and no keys were held on site  
 Item 39 – Lift Shaft – No Access as no lift engineer on site  
 Item 45 – Drill Hall – Ground Floor – Gas Heater - Unable to Sample as Presumed Live  
 Item 57 – Boiler Room – Ground Floor – Boiler - Unable to Sample as Presumed Live  
 Item 59 – Cadet Office and Stores x 2 – No Access as locked and site contact could not obtain keys  
 Item 61 – Firing Range – Ground Floor – Gas Heater - Unable to Sample as Presumed Live  
 Item 66 – Cupboard in Office G21 – Safe Casing – Unable to access  
 Item 79 – Mess Room – First Floor – Gas Heater - Unable to Sample as Presumed Live  
 Item 80 – Meeting Room – First Floor – Live Heater - Unable to Sample as Presumed Live  
 Item 82 – Cleaners Cupboard – Ground Floor – No Access within Locked Cupboard as no key could be found

The presence of asbestos in these areas cannot be ascertained at this time. If any works are to be carried out in these areas in the future, then these works should be approached cautiously.

In accordance with current legislation, any suspect materials encountered in these areas are to be assumed to contain asbestos until proven otherwise. This will normally involve cessation of works in the affected area.

Document Name	Author	Issued by	Revision Number	Issue Date	Page No
2019	Emma Humphreys	Armour AS	0	14/08/2019	5

## **Section 3: Site Description & Survey Information**

### **Brief description on the general building construction**

Brick and block construction with a part pitched, part flat roof.  
 Several buildings of brick construction with pitched roofs.

### **Caveat for no access areas**

No access with live electrics, boiler or heaters.  
 Various rooms could not be accessed as they were locked, and no key was available on site.

### **EXTERNAL MATERIALS**

Roof Type	Pitched, flat
Roof Materials	Profiled cement, cement tiles, slate tiles, felt
Soffits	Timber, supalux
Fascia	Timber
Walls	Brick
Verge Under cloaking	N/A
Guttering	Metal, plastic
Downpipes	Metal, plastic
Window/Door frames	Timber
Other Materials	N/A

### **INTERNAL MATERIALS**

Loft Insulation	Fiberglass
Roof Underlining	N/A
Ceilings	Plasterboard, concrete, flat sheet cement
Walls <i>Internal</i>	Plasterboard, brick
Floors	Carpet, Lino, parquet flooring, screed
Doors/Frames	Timber, metal
Pipework/Insulation	Armaflex, MMMF
Boxings	Timber, plasterboard, supalux
Boiler Make	No access as live
Flue Pipes	Metal
Storage Heaters	No access within heaters
Electrical Boxes/Machinery	No access within boxes
Ducting/Risers	N/A
Stairs	Screed
Lift Shafts	N/A
Other Materials	N/A

Document Name	Author	Issued by	Revision Number	Issue Date	Page No
2019	Emma Humphreys	Armour AS	0	14/08/2019	6



## Section 4: Positive and Presumed Photos Sheets

**Item No: 2**

**Sample No: 1**

**Location: Kitchen - Recruit reception centre**



<b>Material Description:</b>	Sink Pad	
<b>Identification:</b>	Sampled – Asbestos Detected	
<b>Approx. quantity:</b>	1 x Sink	
<b>Accessibility</b>	Low	<i>Assessment Score</i>
<b>Product type:</b>	Bitumen	1
<b>Extent of Damage:</b>	Minor	1
<b>Surface Treatment:</b>	Non-friable	0
<b>Asbestos type:</b>	Chrysotile	1
<b>Material Assessment Score:</b>		3
<b>Priority Assessment Score:</b>		Negligible
<b>Action:</b>	Manage	
<b>Comments:</b>	Modern Worcester boiler	

Document Name	Author	Issued by	Revision Number	Issue Date	Page No
2019	Emma Humphreys	Armour AS	0	14/08/2019	7



**Item No: 7****Sample No: 2****Location: Storage Garage - External**

<b>Material Description:</b>	Cement roof tiles	
<b>Identification:</b>	Sampled – Asbestos Detected	
<b>Approx. quantity:</b>	55M2	
<b>Accessibility</b>	Low	Assessment Score
<b>Product type:</b>	Cement	1
<b>Extent of Damage:</b>	Minor	1
<b>Surface Treatment:</b>	Unsealed cement	1
<b>Asbestos type:</b>	Chrysotile	1
<b>Material Assessment Score:</b>		4
<b>Priority Assessment Score:</b>		Negligible
<b>Action:</b>	Manage	
<b>Comments:</b>	N/A	

Document Name	Author	Issued by	Revision Number	Issue Date	Page No
2019	Emma Humphreys	Armour AS	0	14/08/2019	8



**Item No: 9****Sample No: N/A****Location: Garages 9,10 and 11**

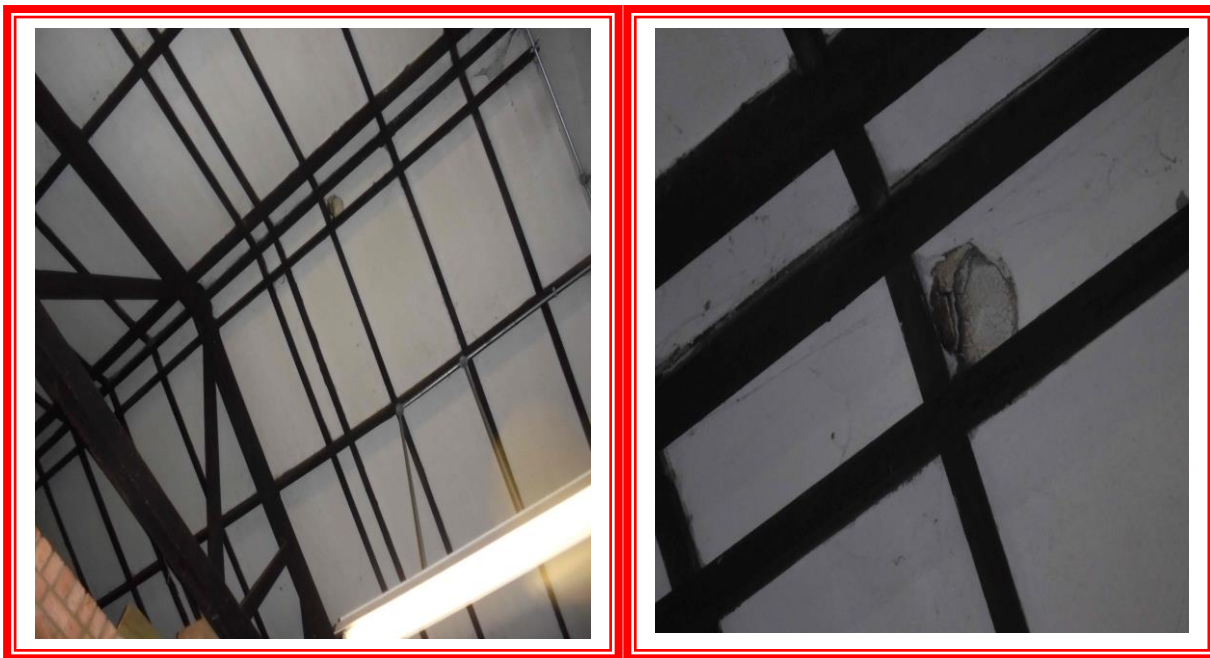
<b>Material Description:</b>	Profiled cement roof	
<b>Identification:</b>	Presumed to Contain Asbestos	
<b>Approx. quantity:</b>	400M2 -entire roof (Garages 1-11)	
<b>Accessibility</b>	Low	<i>Assessment Score</i>
<b>Product type:</b>	Cement	1
<b>Extent of Damage:</b>	Minor	1
<b>Surface Treatment:</b>	Unsealed cement	1
<b>Asbestos type:</b>	Chrysotile	1
<b>Material Assessment Score:</b>		4
<b>Priority Assessment Score:</b>		Negligible
<b>Action:</b>	Manage	
<b>Comments:</b>	No safe access to sample due to height of roof	

Document Name	Author	Issued by	Revision Number	Issue Date	Page No
2019	Emma Humphreys	Armour AS	0	14/08/2019	9

**Item No: 11****Sample No: N/A****Location: Garage 8/Radio store**

<b>Material Description:</b>	Flashguards within electrical box	
<b>Identification:</b>	Presumed to Contain Asbestos	
<b>Approx. quantity:</b>	1 X box	
<b>Accessibility</b>	Low	<i>Assessment Score</i>
<b>Product type:</b>	No Access	2
<b>Extent of Damage:</b>	No Access	1
<b>Surface Treatment:</b>	No Access	1
<b>Asbestos type:</b>	No Access	1
<b>Material Assessment Score:</b>		5
<b>Priority Assessment Score:</b>		Low
<b>Action:</b>	Manage	
<b>Comments:</b>	N/A	

Document Name	Author	Issued by	Revision Number	Issue Date	Page No
2019	Emma Humphreys	Armour AS	0	14/08/2019	10

**Item No: 12****Sample No: N/A****Location: Garage 8/radio store**

<b>Material Description:</b>	Flat sheet cement ceiling panels	
<b>Identification:</b>	Sampled from previous survey- REF: SWAO2665/1/MO4 item 6	
<b>Approx. quantity:</b>	50M2	
<b>Accessibility</b>	Low	<i>Assessment Score</i>
<b>Product type:</b>	Cement	1
<b>Extent of Damage:</b>	Moderate	2
<b>Surface Treatment:</b>	Unsealed cement	1
<b>Asbestos type:</b>	Chrysotile	1
<b>Material Assessment Score:</b>		5
<b>Priority Assessment Score:</b>		Low
<b>Action:</b>	Manage repair	
<b>Comments:</b>	Various areas of damage. No access to sample due to height.	

Document Name	Author	Issued by	Revision Number	Issue Date	Page No
2019	Emma Humphreys	Armour AS	0	14/08/2019	11

**Item No: 15****Sample No: N/A****Location: Vehicle store- garages 4,5,6 and 7**

<b>Material Description:</b>	Flat sheet cement ceiling panels	
<b>Identification:</b>	Sampled on previous survey- REF: SWAO2665/1/MO4 item 6	
<b>Approx. quantity:</b>	120M2	
<b>Accessibility</b>	Low	<i>Assessment Score</i>
<b>Product type:</b>	Cement	1
<b>Extent of Damage:</b>	Minor	1
<b>Surface Treatment:</b>	Unsealed cement	1
<b>Asbestos type:</b>	Chrysotile	1
<b>Material Assessment Score:</b>		4
<b>Priority Assessment Score:</b>		Negligible
<b>Action:</b>	Manage	
<b>Comments:</b>	No access to sample due to height	

Document Name	Author	Issued by	Revision Number	Issue Date	Page No
2019	Emma Humphreys	Armour AS	0	14/08/2019	12



**Item No: 18****Sample No: N/A****Location: Garage 8 - Covered area**

<b>Material Description:</b>	Flat sheet cement ceiling panels	
<b>Identification:</b>	Sampled on previous survey REF: SWA02665/1/MO4 item 6	
<b>Approx. quantity:</b>	10M2	
<b>Accessibility</b>	Low	<i>Assessment Score</i>
<b>Product type:</b>	Cement	1
<b>Extent of Damage:</b>	Minor	1
<b>Surface Treatment:</b>	Unsealed cement	1
<b>Asbestos type:</b>	Chrysotile	1
<b>Material Assessment Score:</b>		4
<b>Priority Assessment Score:</b>		Negligible
<b>Action:</b>	Manage	
<b>Comments:</b>	N/A	

Document Name	Author	Issued by	Revision Number	Issue Date	Page No
2019	Emma Humphreys	Armour AS	0	14/08/2019	13

**Item No: 20****Sample No: 4****Location: Garages 1-11-external**

<b>Material Description:</b>	Cement roof edging	
<b>Identification:</b>	Sampled – Asbestos Detected	
<b>Approx. quantity:</b>	20LM	
<b>Accessibility</b>	Low	<i>Assessment Score</i>
<b>Product type:</b>	Cement	1
<b>Extent of Damage:</b>	Minor	1
<b>Surface Treatment:</b>	Unsealed	1
<b>Asbestos type:</b>	chrysotile	1
<b>Material Assessment Score:</b>		4
<b>Priority Assessment Score:</b>		Negligible
<b>Action:</b>	Manage	
<b>Comments:</b>	Located at both ends of building	

Document Name	Author	Issued by	Revision Number	Issue Date	Page No
2019	Emma Humphreys	Armour AS	0	14/08/2019	14



**Item No: 21**

**Sample No: N/A**

**Location: Garages 1-11 - External**



<b>Material Description:</b>	No access within electrical panel	
<b>Identification:</b>	Presumed to Contain Asbestos	
<b>Approx. quantity:</b>	1 X Box	
<b>Accessibility</b>	Low	<i>Assessment Score</i>
<b>Product type:</b>	No Access	2
<b>Extent of Damage:</b>	No Access	1
<b>Surface Treatment:</b>	No Access	1
<b>Asbestos type:</b>	No Access	1
<b>Material Assessment Score:</b>		5
<b>Priority Assessment Score:</b>		Low
<b>Action:</b>	Manage	
<b>Comments:</b>	No access as live	

Document Name	Author	Issued by	Revision Number	Issue Date	Page No
2019	Emma Humphreys	Armour AS	0	14/08/2019	15



**Item No: 23****Sample No: N/A****Location: Garages 1,2 and 3 -Workshop**

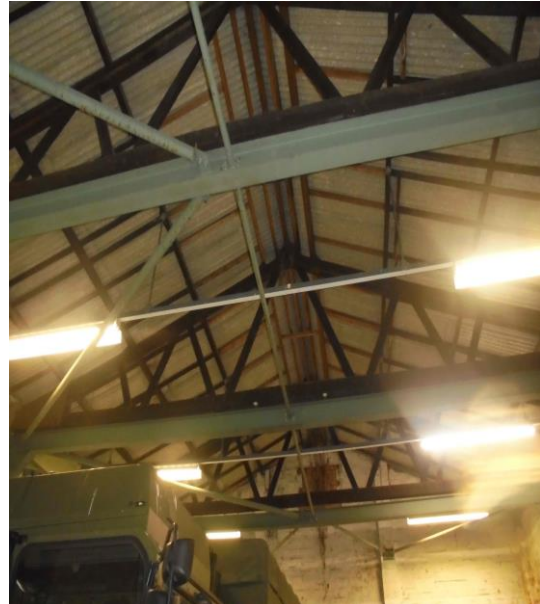
<b>Material Description:</b>	Flat sheet cement ceiling panels	
<b>Identification:</b>	Sampled in previous survey REF- SWAO2665/1/MO4 item 6	
<b>Approx. quantity:</b>	120M2	
<b>Accessibility</b>	Low	<i>Assessment Score</i>
<b>Product type:</b>	Cement	1
<b>Extent of Damage:</b>	Minor	1
<b>Surface Treatment:</b>	Unsealed cement	1
<b>Asbestos type:</b>	Chrysotile	1
<b>Material Assessment Score:</b>		4
<b>Priority Assessment Score:</b>		Negligible
<b>Action:</b>	Manage	
<b>Comments:</b>	Located above plastered ceiling panels and above plasterboard ceilings to stores.	

Document Name	Author	Issued by	Revision Number	Issue Date	Page No
2019	Emma Humphreys	Armour AS	0	14/08/2019	16

**Item No: 25****Sample No: 5****Location: Armoured truck garage - Covered area**

<b>Material Description:</b>	Profiled cement roof	
<b>Identification:</b>	Sampled – Asbestos Detected	
<b>Approx. quantity:</b>	4M2	
<b>Accessibility</b>	Low	<i>Assessment Score</i>
<b>Product type:</b>	Cement	1
<b>Extent of Damage:</b>	Minor	1
<b>Surface Treatment:</b>	Unsealed cement	1
<b>Asbestos type:</b>	Chrysotile	1
<b>Material Assessment Score:</b>		4
<b>Priority Assessment Score:</b>		Negligible
<b>Action:</b>	Manage	
<b>Comments:</b>	N/A	

Document Name	Author	Issued by	Revision Number	Issue Date	Page No
2019	Emma Humphreys	Armour AS	0	14/08/2019	17

**Item No: 26****Sample No: N/A****Location: Armoured truck garage**

<b>Material Description:</b>	Profiled cement roof	
<b>Identification:</b>	As sample 5 – Asbestos Detected	
<b>Approx. quantity:</b>	150M2	
<b>Accessibility</b>	Low	<i>Assessment Score</i>
<b>Product type:</b>	Cement	1
<b>Extent of Damage:</b>	Minor	1
<b>Surface Treatment:</b>	Unsealed cement	1
<b>Asbestos type:</b>	chrysotile	1
<b>Material Assessment Score:</b>		4
<b>Priority Assessment Score:</b>		Negligible
<b>Action:</b>	Manage	
<b>Comments:</b>	N/A	

Document Name	Author	Issued by	Revision Number	Issue Date	Page No
2019	Emma Humphreys	Armour AS	0	14/08/2019	18

**Item No: 27****Sample No: N/A****Location: Armoured Truck Garage**

<b>Material Description:</b>	Flat sheet cement panels to ceiling	
<b>Identification:</b>	Presumed to Contain Asbestos	
<b>Approx. quantity:</b>	2M2	
<b>Accessibility</b>	Low	<i>Assessment Score</i>
<b>Product type:</b>	Cement	1
<b>Extent of Damage:</b>	Minor	1
<b>Surface Treatment:</b>	Unsealed cement	1
<b>Asbestos type:</b>	Chrysotile	1
<b>Material Assessment Score:</b>		4
<b>Priority Assessment Score:</b>		Negligible
<b>Action:</b>	Manage	
<b>Comments:</b>	No access to sample due to height	

Document Name	Author	Issued by	Revision Number	Issue Date	Page No
2019	Emma Humphreys	Armour AS	0	14/08/2019	19



**Item No: 28****Sample No: N/A****Location: Garages 14-26 - External**

<b>Material Description:</b>	Profiled cement roof	
<b>Identification:</b>	Previously sampled-REF-SWA02665/1/4 item 5	
<b>Approx. quantity:</b>	400M2 - entire roof	
<b>Accessibility</b>	Low	<i>Assessment Score</i>
<b>Product type:</b>	Cement	1
<b>Extent of Damage:</b>	Minor	1
<b>Surface Treatment:</b>	Unsealed cement	1
<b>Asbestos type:</b>	chrysotile	1
<b>Material Assessment Score:</b>		4
<b>Priority Assessment Score:</b>		Negligible
<b>Action:</b>	Manage	
<b>Comments:</b>	N/A	

Document Name	Author	Issued by	Revision Number	Issue Date	Page No
2019	Emma Humphreys	Armour AS	0	14/08/2019	20

**Item No: 29****Sample No: N/A****Location: Garages 14-26**

<b>Material Description:</b>	Flat sheet cement ceiling panels	
<b>Identification:</b>	Presumed to Contain Asbestos	
<b>Approx. quantity:</b>	400M2	
<b>Accessibility</b>	Low	<i>Assessment Score</i>
<b>Product type:</b>	Cement	1
<b>Extent of Damage:</b>	Moderate	2
<b>Surface Treatment:</b>	Unsealed cement	1
<b>Asbestos type:</b>	Chrysotile	1
<b>Material Assessment Score:</b>		5
<b>Priority Assessment Score:</b>		Low
<b>Action:</b>	Manage/Encapsulate	
<b>Comments:</b>	No access to sample due to height. Several areas of damage	

Document Name	Author	Issued by	Revision Number	Issue Date	Page No
2019	Emma Humphreys	Armour AS	0	14/08/2019	21



**Item No: 30**

**Sample No: N/A**

**Location: Garages 14-26 - External**



<b>Material Description:</b>	Cement roof edging	
<b>Identification:</b>	Previously sampled -REF: SWAO2665/1/3 item 4	
<b>Approx. quantity:</b>	20LM	
<b>Accessibility</b>	Low	<i>Assessment Score</i>
<b>Product type:</b>	Cement	1
<b>Extent of Damage:</b>	Minor	1
<b>Surface Treatment:</b>	Unsealed cement	1
<b>Asbestos type:</b>	chrysotile	1
<b>Material Assessment Score:</b>		4
<b>Priority Assessment Score:</b>		Negligible
<b>Action:</b>	Manage	
<b>Comments:</b>	Located on both ends of garage	

Document Name	Author	Issued by	Revision Number	Issue Date	Page No
2019	Emma Humphreys	Armour AS	0	14/08/2019	22





**Item No: 32**

**Sample No: N/A**

**Location: AO building**



<b>Material Description:</b>	No access within building as locked	
<b>Identification:</b>	Presumed to Contain Asbestos	
<b>Approx. quantity:</b>	Unknown	
<b>Accessibility</b>	Low	<i>Assessment Score</i>
<b>Product type:</b>	No Access	3
<b>Extent of Damage:</b>	No Access	3
<b>Surface Treatment:</b>	No Access	3
<b>Asbestos type:</b>	No Access	3
<b>Material Assessment Score:</b>		12
<b>Priority Assessment Score:</b>		High
<b>Action:</b>	Further Investigation Required	
<b>Comments:</b>	Building is managed by the air cadets ad no one on site had access to the building during the two day survey	

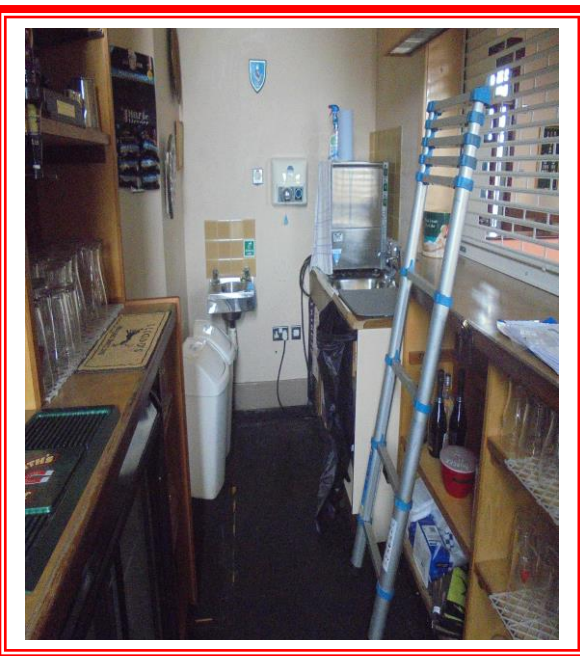
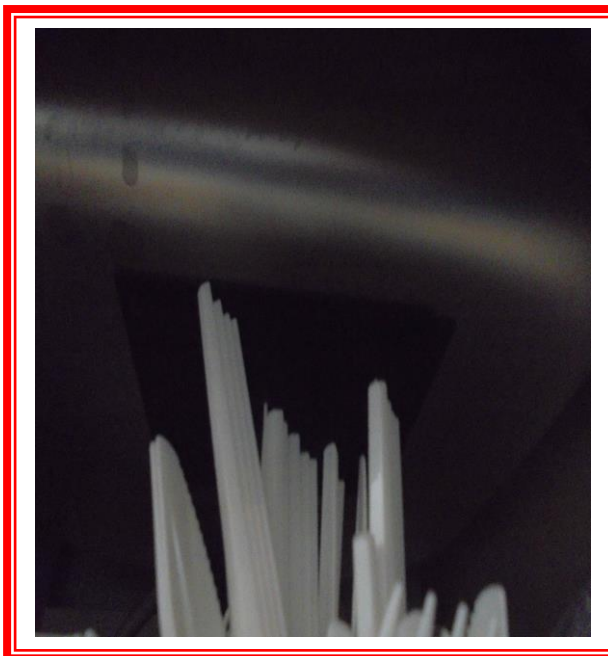
Document Name	Author	Issued by	Revision Number	Issue Date	Page No
2019	Emma Humphreys	Armour AS	0	14/08/2019	23



**Item No: 38**

**Sample No: 8**

**Location: Bars X 2 first floor**



<b>Material Description:</b>	Sink pads	
<b>Identification:</b>	Sampled – Asbestos Detected	
<b>Approx. quantity:</b>	2 x sinks	
<b>Accessibility</b>	Low	<i>Assessment Score</i>
<b>Product type:</b>	Bitumen	1
<b>Extent of Damage:</b>	Minor	1
<b>Surface Treatment:</b>	Non-friable	0
<b>Asbestos type:</b>	Chrysotile	1
<b>Material Assessment Score:</b>		3
<b>Priority Assessment Score:</b>		Negligible
<b>Action:</b>	Manage	
<b>Comments:</b>	N/A	

Document Name	Author	Issued by	Revision Number	Issue Date	Page No
2019	Emma Humphreys	Armour AS	0	14/08/2019	24

**Item No: 39****Sample No: N/A****Location: Lift shafts**

<b>Material Description:</b>	No access within lift shafts	
<b>Identification:</b>	Presumed to Contain Asbestos	
<b>Approx. quantity:</b>	1 X Lift	
<b>Accessibility</b>	Low	<i>Assessment Score</i>
<b>Product type:</b>	No Access	3
<b>Extent of Damage:</b>	No Access	3
<b>Surface Treatment:</b>	No Access	3
<b>Asbestos type:</b>	No Access	3
<b>Material Assessment Score:</b>		12
<b>Priority Assessment Score:</b>		Low
<b>Action:</b>	Further Investigation Required	
<b>Comments:</b>	No access as no lift engineer on site.	

Document Name	Author	Issued by	Revision Number	Issue Date	Page No
2019	Emma Humphreys	Armour AS	0	14/08/2019	25

**Item No: 45****Sample No: N/A****Location: Dinner hall - Ground floor**

<b>Material Description:</b>	No access within the heater	
<b>Identification:</b>	Presumed to Contain Asbestos	
<b>Approx. quantity:</b>	X 4 heaters	
<b>Accessibility</b>	Low	<i>Assessment Score</i>
<b>Product type:</b>	No Access	2
<b>Extent of Damage:</b>	No Access	2
<b>Surface Treatment:</b>	No Access	2
<b>Asbestos type:</b>	No Access	2
<b>Material Assessment Score:</b>		8
<b>Priority Assessment Score:</b>		Low
<b>Action:</b>	Manage	
<b>Comments:</b>	No access as live	

Document Name	Author	Issued by	Revision Number	Issue Date	Page No
2019	Emma Humphreys	Armour AS	0	14/08/2019	26





**Item No: 49**

**Sample No: 11**

**Location: Kitchen - ground floor**



<b>Material Description:</b>	Sink Pads	
<b>Identification:</b>	Sampled – Asbestos Detected	
<b>Approx. quantity:</b>	X 4 sinks	
<b>Accessibility</b>	Low	<i>Assessment Score</i>
<b>Product type:</b>	Bitumen	1
<b>Extent of Damage:</b>	Moderate	2
<b>Surface Treatment:</b>	Non-friable	0
<b>Asbestos type:</b>	Chrysotile	1
<b>Material Assessment Score:</b>		4
<b>Priority Assessment Score:</b>		Negligible
<b>Action:</b>	Manage	
<b>Comments:</b>	N/A	

Document Name	Author	Issued by	Revision Number	Issue Date	Page No
2019	Emma Humphreys	Armour AS	0	14/08/2019	27



**Item No: 56**

**Sample No: 14**

**Location: Boiler room -ground floor**



<b>Material Description:</b>	Gaskets	
<b>Identification:</b>	Sampled – Asbestos Detected	
<b>Approx. quantity:</b>	8 x gaskets	
<b>Accessibility</b>	Low	<i>Assessment Score</i>
<b>Product type:</b>	Textiles	2
<b>Extent of Damage:</b>	Minor	1
<b>Surface Treatment:</b>	Unsealed	1
<b>Asbestos type:</b>	Chrysotile	1
<b>Material Assessment Score:</b>		5
<b>Priority Assessment Score:</b>		Low
<b>Action:</b>	Manage	
<b>Comments:</b>	N/A	

Document Name	Author	Issued by	Revision Number	Issue Date	Page No
2019	Emma Humphreys	Armour AS	0	14/08/2019	28



**Item No: 57**

**Sample No: N/A**

**Location: Boiler room - Ground Floor**



<b>Material Description:</b>	No access within boilers	
<b>Identification:</b>	Presumed to Contain Asbestos	
<b>Approx. quantity:</b>	1 x boiler	
<b>Accessibility</b>	Low	<i>Assessment Score</i>
<b>Product type:</b>	No Access	3
<b>Extent of Damage:</b>	No Access	3
<b>Surface Treatment:</b>	No Access	3
<b>Asbestos type:</b>	No Access	3
<b>Material Assessment Score:</b>		12
<b>Priority Assessment Score:</b>		Low
<b>Action:</b>	Manage	
<b>Comments:</b>	No access and live	

Document Name	Author	Issued by	Revision Number	Issue Date	Page No
2019	Emma Humphreys	Armour AS	0	14/08/2019	29



**Item No: 59****Sample No: N/A****Location: Cadet office and Stores x 2**

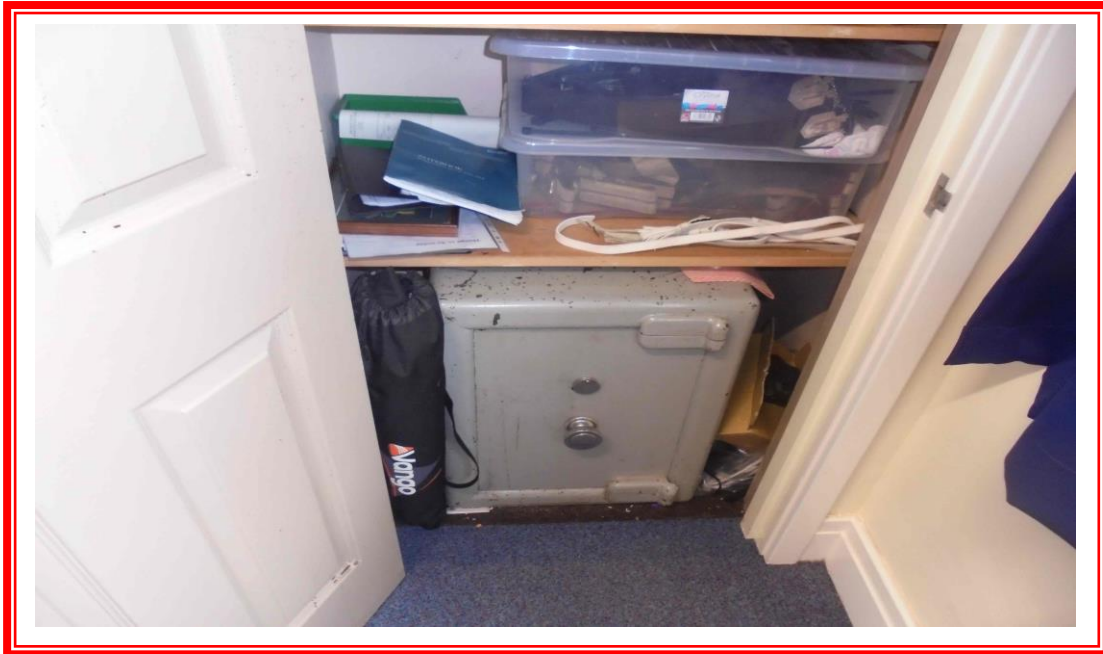
<b>Material Description:</b>	No access within locked rooms	
<b>Identification:</b>	Presumed to Contain Asbestos	
<b>Approx. quantity:</b>	3 x rooms	
<b>Accessibility</b>	Low	<i>Assessment Score</i>
<b>Product type:</b>	No Access	3
<b>Extent of Damage:</b>	No Access	3
<b>Surface Treatment:</b>	No Access	3
<b>Asbestos type:</b>	No Access	3
<b>Material Assessment Score:</b>		12
<b>Priority Assessment Score:</b>		High
<b>Action:</b>	Further Investigation required	
<b>Comments:</b>	No key available during the survey. Store door has sticker reading 'asbestos within' please refer to previous survey for details.	

Document Name	Author	Issued by	Revision Number	Issue Date	Page No
2019	Emma Humphreys	Armour AS	0	14/08/2019	30

**Item No: 61****Sample No: N/A****Location: Firing range - Ground Floor**

<b>Material Description:</b>	No access within gas heater	
<b>Identification:</b>	Presumed to Contain Asbestos	
<b>Approx. quantity:</b>	1 x heater	
<b>Accessibility</b>	Low	<i>Assessment Score</i>
<b>Product type:</b>	No Access	2
<b>Extent of Damage:</b>	No Access	2
<b>Surface Treatment:</b>	No Access	2
<b>Asbestos type:</b>	No Access	2
<b>Material Assessment Score:</b>		8
<b>Priority Assessment Score:</b>		Medium
<b>Action:</b>	Manage	
<b>Comments:</b>	No access as live	

Document Name	Author	Issued by	Revision Number	Issue Date	Page No
2019	Emma Humphreys	Armour AS	0	14/08/2019	31

**Item No: 66****Sample No: N/A****Location: Cupboard in Office G21**

<b>Material Description:</b>	No access within safe casings	
<b>Identification:</b>	Presumed to Contain Asbestos	
<b>Approx. quantity:</b>	1 x Safe	
<b>Accessibility</b>	Low	<i>Assessment Score</i>
<b>Product type:</b>	No Access	2
<b>Extent of Damage:</b>	No Access	2
<b>Surface Treatment:</b>	No Access	2
<b>Asbestos type:</b>	No Access	2
<b>Material Assessment Score:</b>		8
<b>Priority Assessment Score:</b>		Medium
<b>Action:</b>	Manage	
<b>Comments:</b>	N/A	

Document Name	Author	Issued by	Revision Number	Issue Date	Page No
2019	Emma Humphreys	Armour AS	0	14/08/2019	32

**Item No: 79****Sample No: N/A****Location: Mess room – First Floor**

<b>Material Description:</b>	No access within live gas heaters	
<b>Identification:</b>	Presumed to Contain Asbestos	
<b>Approx. quantity:</b>	X 2 heaters	
<b>Accessibility</b>	Low	<i>Assessment Score</i>
<b>Product type:</b>	No Access	2
<b>Extent of Damage:</b>	No Access	2
<b>Surface Treatment:</b>	No Access	2
<b>Asbestos type:</b>	No Access	2
<b>Material Assessment Score:</b>		8
<b>Priority Assessment Score:</b>		Medium
<b>Action:</b>	Manage	
<b>Comments:</b>	N/A	

Document Name	Author	Issued by	Revision Number	Issue Date	Page No
2019	Emma Humphreys	Armour AS	0	14/08/2019	33

**Item No: 80****Sample No: N/A****Location: Meeting room - First floor**

<b>Material Description:</b>	No access within live heater	
<b>Identification:</b>	Presumed to Contain Asbestos	
<b>Approx. quantity:</b>	1 x heater	
<b>Accessibility</b>	Low	<i>Assessment Score</i>
<b>Product type:</b>	No Access	2
<b>Extent of Damage:</b>	No Access	2
<b>Surface Treatment:</b>	No Access	2
<b>Asbestos type:</b>	No Access	2
<b>Material Assessment Score:</b>		8
<b>Priority Assessment Score:</b>		Medium
<b>Action:</b>	Manage	
<b>Comments:</b>	N/A	

Document Name	Author	Issued by	Revision Number	Issue Date	Page No
2019	Emma Humphreys	Armour AS	0	14/08/2019	34





**Item No: 82**

**Sample No: N/A**

**Location: Cleaner cupboard – Ground Floor**



<b>Material Description:</b>	No access to locked cupboard	
<b>Identification:</b>	Presumed to Contain Asbestos	
<b>Approx. quantity:</b>	1 x room	
<b>Accessibility</b>	Low	<i>Assessment Score</i>
<b>Product type:</b>	No Access	3
<b>Extent of Damage:</b>	No Access	3
<b>Surface Treatment:</b>	No Access	3
<b>Asbestos type:</b>	No Access	3
<b>Material Assessment Score:</b>		12
<b>Priority Assessment Score:</b>		High
<b>Action:</b>	Manage	
<b>Comments:</b>	Further investigation required	

Document Name	Author	Issued by	Revision Number	Issue Date	Page No
2019	Emma Humphreys	Armour AS	0	14/08/2019	35

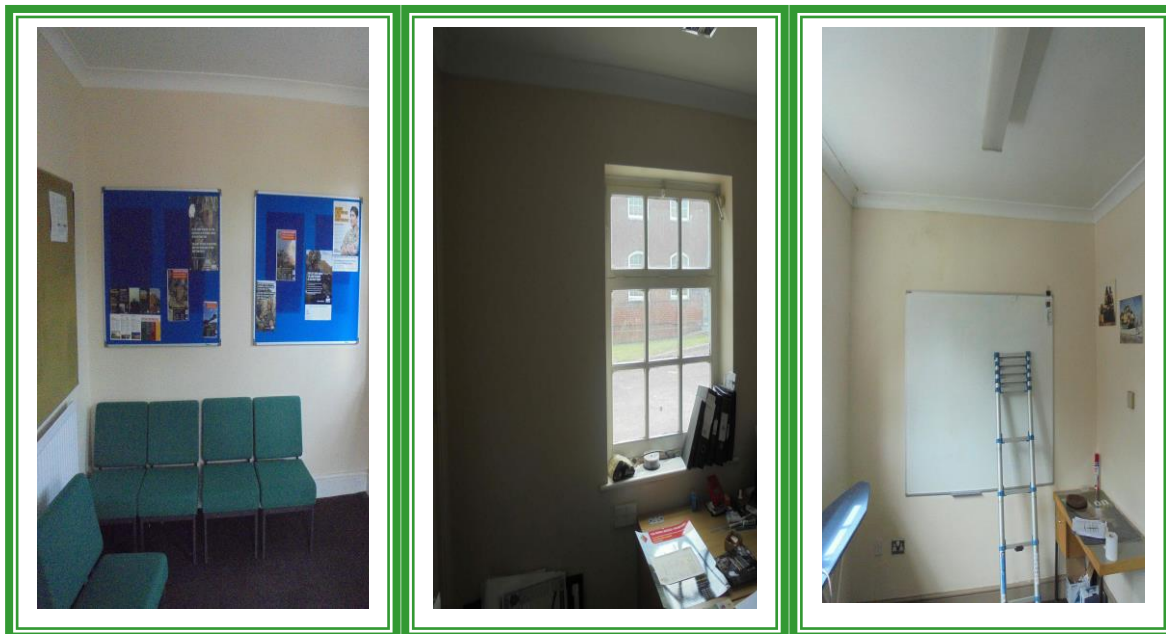


## Section 5: Negative Photos Sheets

**Item No: 1**

**Sample No: N/A**

**Location: Recruit reception office-offices x2 and waiting room**



<b>Material Description:</b>	Visual Inspection – No Suspect Materials Found	
<b>Identification:</b>	N/A	
<b>Approx. quantity:</b>	N/A	
<b>Accessibility</b>	N/A	<i>Assessment Score</i>
<b>Product type:</b>		N/A
<b>Extent of Damage:</b>		N/A
<b>Surface Treatment:</b>		N/A
<b>Asbestos type:</b>		N/A
<b>Material Assessment Score:</b>		N/A
<b>Priority Assessment Score:</b>		N/A
<b>Action:</b>	N/A	
<b>Comments:</b>	N/A	

Document Name	Author	Issued by	Revision Number	Issue Date	Page No
2019	Emma Humphreys	Armour AS	0	14/08/2019	36

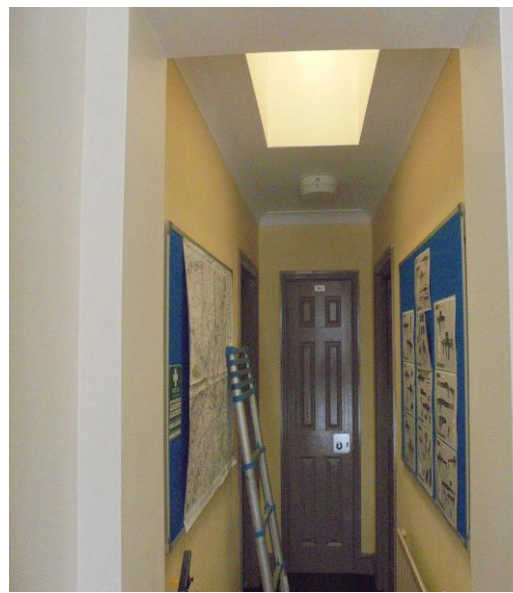




**Item No: 3**

**Sample No: N/A**

**Location: Circulation/lobby-recruit reception centre**



<b>Material Description:</b>	Visual Inspection – No Suspect Materials Found	
<b>Identification:</b>	N/A	
<b>Approx. quantity:</b>	N/A	
<b>Accessibility</b>	N/A	<i>Assessment Score</i>
<b>Product type:</b>		N/A
<b>Extent of Damage:</b>		N/A
<b>Surface Treatment:</b>		N/A
<b>Asbestos type:</b>		N/A
<b>Material Assessment Score:</b>		N/A
<b>Priority Assessment Score:</b>		N/A
<b>Action:</b>	N/A	
<b>Comments:</b>	No access within plasterboard boxings	

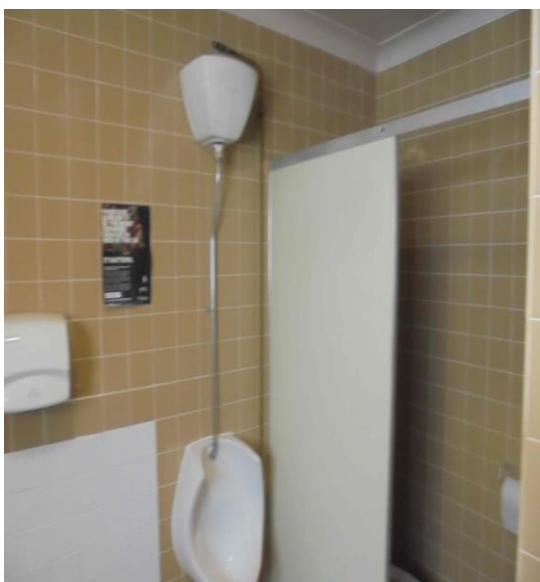
Document Name	Author	Issued by	Revision Number	Issue Date	Page No
2019	Emma Humphreys	Armour AS	0	14/08/2019	37



**Item No:4**

**Sample No: N/A**

**Location: WC/lobby-recruit reception centre**



<b>Material Description:</b>	Visual Inspection – No Suspect Materials Found	
<b>Identification:</b>	N/A	
<b>Approx. quantity:</b>	N/A	
<b>Accessibility</b>	N/A	<i>Assessment Score</i>
<b>Product type:</b>		N/A
<b>Extent of Damage:</b>		N/A
<b>Surface Treatment:</b>		N/A
<b>Asbestos type:</b>		N/A
<b>Material Assessment Score:</b>		N/A
<b>Priority Assessment Score:</b>		N/A
<b>Action:</b>	N/A	
<b>Comments:</b>	N/A	

Document Name	Author	Issued by	Revision Number	Issue Date	Page No
2019	Emma Humphreys	Armour AS	0	14/08/2019	38



**Item No: 5**

**Sample No: N/A**

**Location: Recruit reception centre - External**



<b>Material Description:</b>	Visual Inspection – No Suspect Materials Found	
<b>Identification:</b>	N/A	
<b>Approx. quantity:</b>	N/A	
<b>Accessibility</b>	N/A	<i>Assessment Score</i>
<b>Product type:</b>		N/A
<b>Extent of Damage:</b>		N/A
<b>Surface Treatment:</b>		N/A
<b>Asbestos type:</b>		N/A
<b>Material Assessment Score:</b>		N/A
<b>Priority Assessment Score:</b>		N/A
<b>Action:</b>	N/A	
<b>Comments:</b>	N/A	

Document Name	Author	Issued by	Revision Number	Issue Date	Page No
2019	Emma Humphreys	Armour AS	0	14/08/2019	39

**Item No: 6****Sample No: N/A****Location: Storage garage - Internal**

<b>Material Description:</b>	Visual Inspection – No Suspect Materials Found	
<b>Identification:</b>	N/A	
<b>Approx. quantity:</b>	N/A	
<b>Accessibility</b>	N/A	<i>Assessment Score</i>
<b>Product type:</b>		N/A
<b>Extent of Damage:</b>		N/A
<b>Surface Treatment:</b>		N/A
<b>Asbestos type:</b>		N/A
<b>Material Assessment Score:</b>		N/A
<b>Priority Assessment Score:</b>		N/A
<b>Action:</b>	N/A	
<b>Comments:</b>	N/A	

Document Name	Author	Issued by	Revision Number	Issue Date	Page No
2019	Emma Humphreys	Armour AS	0	14/08/2019	40





**Item No: 8**

**Sample No: N/A**

**Location: stores x 3 - garages 9,10 and 11**



<b>Material Description:</b>	Visual Inspection – No Suspect Materials Found	
<b>Identification:</b>	N/A	
<b>Approx. quantity:</b>	N/A	
<b>Accessibility</b>	N/A	<i>Assessment Score</i>
<b>Product type:</b>		N/A
<b>Extent of Damage:</b>		N/A
<b>Surface Treatment:</b>		N/A
<b>Asbestos type:</b>		N/A
<b>Material Assessment Score:</b>		N/A
<b>Priority Assessment Score:</b>		N/A
<b>Action:</b>	N/A	
<b>Comments:</b>	N/A	

Document Name	Author	Issued by	Revision Number	Issue Date	Page No
2019	Emma Humphreys	Armour AS	0	14/08/2019	41



**Item No: 10****Sample No: 3****Location: Garage 8/Radio store**

<b>Material Description:</b>	Insulation board wall panels	
<b>Identification:</b>	Sampled – No Asbestos Detected	
<b>Approx. quantity:</b>	20M2	
<b>Accessibility</b>	Low	<i>Assessment Score</i>
<b>Product type:</b>	N/A	2
<b>Extent of Damage:</b>	N/A	2
<b>Surface Treatment:</b>	N/A	2
<b>Asbestos type:</b>	N/A	2
<b>Material Assessment Score:</b>		N/A
<b>Priority Assessment Score:</b>		N/A
<b>Action:</b>	N/A	
<b>Comments:</b>	N/A	

Document Name	Author	Issued by	Revision Number	Issue Date	Page No
2019	Emma Humphreys	Armour AS	0	14/08/2019	42

**Item No: 13****Sample No: N/A****Location: Garage 8 - Stores X3**

<b>Material Description:</b>	Visual Inspection – No Suspect Materials Found	
<b>Identification:</b>	N/A	
<b>Approx. quantity:</b>	N/A	
<b>Accessibility</b>	N/A	<i>Assessment Score</i>
<b>Product type:</b>		N/A
<b>Extent of Damage:</b>		N/A
<b>Surface Treatment:</b>		N/A
<b>Asbestos type:</b>		N/A
<b>Material Assessment Score:</b>		N/A
<b>Priority Assessment Score:</b>		N/A
<b>Action:</b>	N/A	
<b>Comments:</b>	N/A	

Document Name	Author	Issued by	Revision Number	Issue Date	Page No
2019	Emma Humphreys	Armour AS	0	14/08/2019	43



**Item No: 14**

**Sample No: N/A**

**Location: Vehicle Store - Garages 4,5,6 and 7**



<b>Material Description:</b>	Insulating board wall panels	
<b>Identification:</b>	As Sample 3 – No Asbestos Detected	
<b>Approx. quantity:</b>	40M2	
<b>Accessibility</b>	Low	<i>Assessment Score</i>
<b>Product type:</b>		N/A
<b>Extent of Damage:</b>		N/A
<b>Surface Treatment:</b>		N/A
<b>Asbestos type:</b>		N/A
<b>Material Assessment Score:</b>		N/A
<b>Priority Assessment Score:</b>		N/A
<b>Action:</b>	N/A	
<b>Comments:</b>	N/A	

Document Name	Author	Issued by	Revision Number	Issue Date	Page No
2019	Emma Humphreys	Armour AS	0	14/08/2019	44



**Item No: 16**

**Sample No: N/A**

**Location: Garages 4,5,6 and 7 - Stores x 4**



<b>Material Description:</b>	Visual Inspection – No Suspect Materials Found	
<b>Identification:</b>	N/A	
<b>Approx. quantity:</b>	N/A	
<b>Accessibility</b>	N/A	<i>Assessment Score</i>
<b>Product type:</b>		N/A
<b>Extent of Damage:</b>		N/A
<b>Surface Treatment:</b>		N/A
<b>Asbestos type:</b>		N/A
<b>Material Assessment Score:</b>		N/A
<b>Priority Assessment Score:</b>		N/A
<b>Action:</b>	N/A	
<b>Comments:</b>	N/A	

Document Name	Author	Issued by	Revision Number	Issue Date	Page No
2019	Emma Humphreys	Armour AS	0	14/08/2019	45



**Item No: 17****Sample No: N/A****Location: Garage 8 - Covered area**

<b>Material Description:</b>	Insulated board boxing and wall panels	
<b>Identification:</b>	As sample 3 – No Asbestos Detected	
<b>Approx. quantity:</b>	16M2	
<b>Accessibility</b>	Low	<i>Assessment Score</i>
<b>Product type:</b>		N/A
<b>Extent of Damage:</b>		N/A
<b>Surface Treatment:</b>		N/A
<b>Asbestos type:</b>		N/A
<b>Material Assessment Score:</b>		N/A
<b>Priority Assessment Score:</b>		N/A
<b>Action:</b>	N/A	
<b>Comments:</b>	N/A	

Document Name	Author	Issued by	Revision Number	Issue Date	Page No
2019	Emma Humphreys	Armour AS	0	14/08/2019	46



**Item No: 19****Sample No: N/A****Location: Garages 1-11 - External**

<b>Material Description:</b>	Insulation board soffit	
<b>Identification:</b>	As sample 3 – No Asbestos Detected	
<b>Approx. quantity:</b>	3LM	
<b>Accessibility</b>	Low	<i>Assessment Score</i>
<b>Product type:</b>		N/A
<b>Extent of Damage:</b>		N/A
<b>Surface Treatment:</b>		N/A
<b>Asbestos type:</b>		N/A
<b>Material Assessment Score:</b>		N/A
<b>Priority Assessment Score:</b>		N/A
<b>Action:</b>	N/A	
<b>Comments:</b>	N/A	

Document Name	Author	Issued by	Revision Number	Issue Date	Page No
2019	Emma Humphreys	Armour AS	0	14/08/2019	47

**Item No: 22****Sample No: N/A****Location: Garages 1,2 and 3-WC and porch**

<b>Material Description:</b>	Visual Inspection – No Suspect Materials Found	
<b>Identification:</b>	N/A	
<b>Approx. quantity:</b>	N/A	
<b>Accessibility</b>	N/A	<i>Assessment Score</i>
<b>Product type:</b>		N/A
<b>Extent of Damage:</b>		N/A
<b>Surface Treatment:</b>		N/A
<b>Asbestos type:</b>		N/A
<b>Material Assessment Score:</b>		N/A
<b>Priority Assessment Score:</b>		N/A
<b>Action:</b>	N/A	
<b>Comments:</b>	N/A	

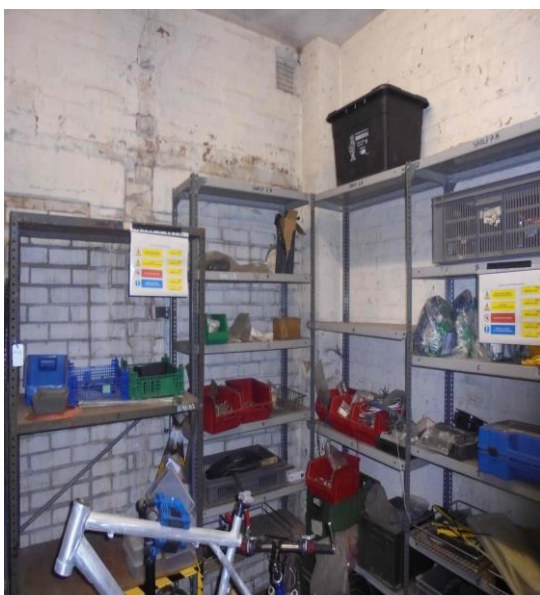
Document Name	Author	Issued by	Revision Number	Issue Date	Page No
2019	Emma Humphreys	Armour AS	0	14/08/2019	48



**Item No: 24**

**Sample No: N/A**

**Location: Garages 1,2 and 3 - Stores X2**



<b>Material Description:</b>	Visual Inspection – No Suspect Materials Found	
<b>Identification:</b>	N/A	
<b>Approx. quantity:</b>	N/A	
<b>Accessibility</b>	N/A	<i>Assessment Score</i>
<b>Product type:</b>		N/A
<b>Extent of Damage:</b>		N/A
<b>Surface Treatment:</b>		N/A
<b>Asbestos type:</b>		N/A
<b>Material Assessment Score:</b>		N/A
<b>Priority Assessment Score:</b>		N/A
<b>Action:</b>	N/A	
<b>Comments:</b>	N/A	

Document Name	Author	Issued by	Revision Number	Issue Date	Page No
2019	Emma Humphreys	Armour AS	0	14/08/2019	49



**Item No: 31**

**Sample No: N/A**

**Location: Armoured truck garage -Stores X2 and lobby**



<b>Material Description:</b>	Visual Inspection – No Suspect Materials Found	
<b>Identification:</b>	N/A	
<b>Approx. quantity:</b>	N/A	
<b>Accessibility</b>	N/A	<i>Assessment Score</i>
<b>Product type:</b>		N/A
<b>Extent of Damage:</b>		N/A
<b>Surface Treatment:</b>		N/A
<b>Asbestos type:</b>		N/A
<b>Material Assessment Score:</b>		N/A
<b>Priority Assessment Score:</b>		N/A
<b>Action:</b>	N/A	
<b>Comments:</b>	N/A	

Document Name	Author	Issued by	Revision Number	Issue Date	Page No
2019	Emma Humphreys	Armour AS	0	14/08/2019	50



**Item No: 33****Sample No: N/A****Location: Main building-WC – First Floor**

<b>Material Description:</b>	Visual Inspection – No Suspect Materials Found	
<b>Identification:</b>	N/A	
<b>Approx. quantity:</b>	N/A	
<b>Accessibility</b>	N/A	<i>Assessment Score</i>
<b>Product type:</b>		N/A
<b>Extent of Damage:</b>		N/A
<b>Surface Treatment:</b>		N/A
<b>Asbestos type:</b>		N/A
<b>Material Assessment Score:</b>		N/A
<b>Priority Assessment Score:</b>		N/A
<b>Action:</b>	N/A	
<b>Comments:</b>	N/A	

Document Name	Author	Issued by	Revision Number	Issue Date	Page No
2019	Emma Humphreys	Armour AS	0	14/08/2019	51

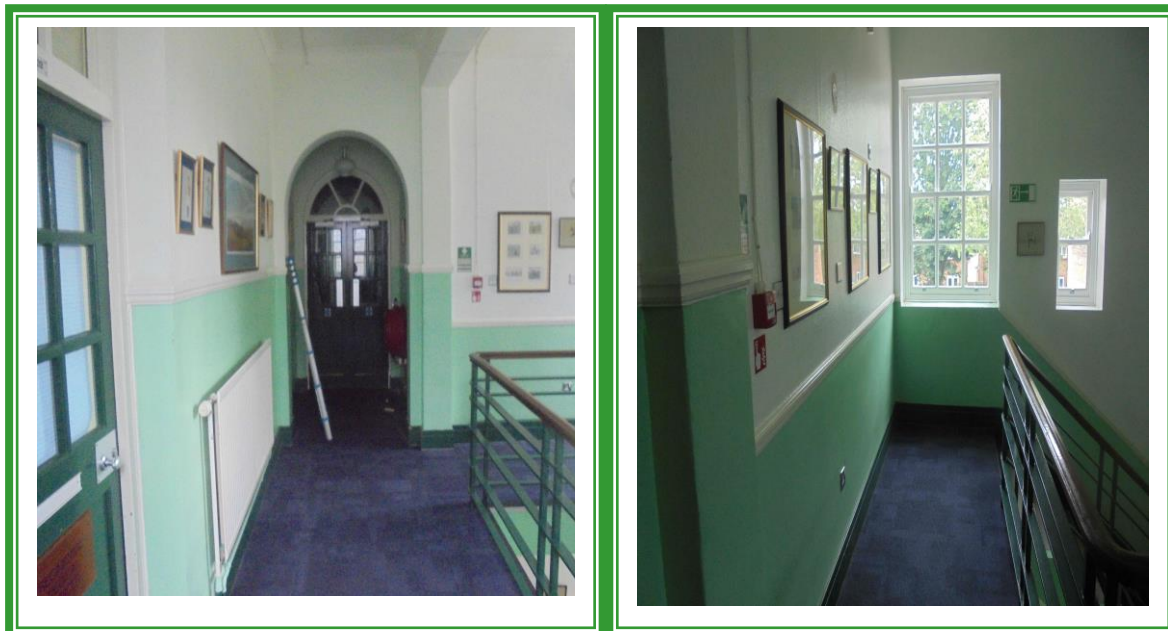




**Item No: 34**

**Sample No: N/A**

**Location: Landing – First Floor**



<b>Material Description:</b>	Visual Inspection – No Suspect Materials Found	
<b>Identification:</b>	N/A	
<b>Approx. quantity:</b>	N/A	
<b>Accessibility</b>	N/A	<i>Assessment Score</i>
<b>Product type:</b>		N/A
<b>Extent of Damage:</b>		N/A
<b>Surface Treatment:</b>		N/A
<b>Asbestos type:</b>		N/A
<b>Material Assessment Score:</b>		N/A
<b>Priority Assessment Score:</b>		N/A
<b>Action:</b>	N/A	
<b>Comments:</b>	N/A	

Document Name	Author	Issued by	Revision Number	Issue Date	Page No
2019	Emma Humphreys	Armour AS	0	14/08/2019	52

**Item No: 35****Sample No: 6****Location: Main Building - External**

<b>Material Description:</b>	Cement replacement roof tiles	
<b>Identification:</b>	Sampled – No Asbestos Detected	
<b>Approx. quantity:</b>	Unknown-all replacement tiles	
<b>Accessibility</b>	Low	<i>Assessment Score</i>
<b>Product type:</b>		N/A
<b>Extent of Damage:</b>		N/A
<b>Surface Treatment:</b>		N/A
<b>Asbestos type:</b>		N/A
<b>Material Assessment Score:</b>		N/A
<b>Priority Assessment Score:</b>		N/A
<b>Action:</b>	N/A	
<b>Comments:</b>	Tiles are natural slate apart from a number of cement replacement tiles	

Document Name	Author	Issued by	Revision Number	Issue Date	Page No
2019	Emma Humphreys	Armour AS	0	14/08/2019	53

**Item No: 36****Sample No: 7****Location: Ladies WC and changing room – First Floor**

<b>Material Description:</b>	Bitumen under Parquet Flooring	
<b>Identification:</b>	Sampled – Asbestos Detected	
<b>Approx. quantity:</b>	Parquet flooring throughout building	
<b>Accessibility</b>	Low	<i>Assessment Score</i>
<b>Product type:</b>		N/A
<b>Extent of Damage:</b>		N/A
<b>Surface Treatment:</b>		N/A
<b>Asbestos type:</b>		N/A
<b>Material Assessment Score:</b>		N/A
<b>Priority Assessment Score:</b>		N/A
<b>Action:</b>	N/A	
<b>Comments:</b>	Treat as uniform to parquet flooring throughout building	

Document Name	Author	Issued by	Revision Number	Issue Date	Page No
2019	Emma Humphreys	Armour AS	0	14/08/2019	54



**Item No: 37**

**Sample No: N/A**

**Location: Men's WC – First Floor**



<b>Material Description:</b>	Visual Inspection – No Suspect Materials Found	
<b>Identification:</b>	N/A	
<b>Approx. quantity:</b>	N/A	
<b>Accessibility</b>	N/A	<i>Assessment Score</i>
<b>Product type:</b>		N/A
<b>Extent of Damage:</b>		N/A
<b>Surface Treatment:</b>		N/A
<b>Asbestos type:</b>		N/A
<b>Material Assessment Score:</b>		N/A
<b>Priority Assessment Score:</b>		N/A
<b>Action:</b>	N/A	
<b>Comments:</b>	N/A	

Document Name	Author	Issued by	Revision Number	Issue Date	Page No
2019	Emma Humphreys	Armour AS	0	14/08/2019	55

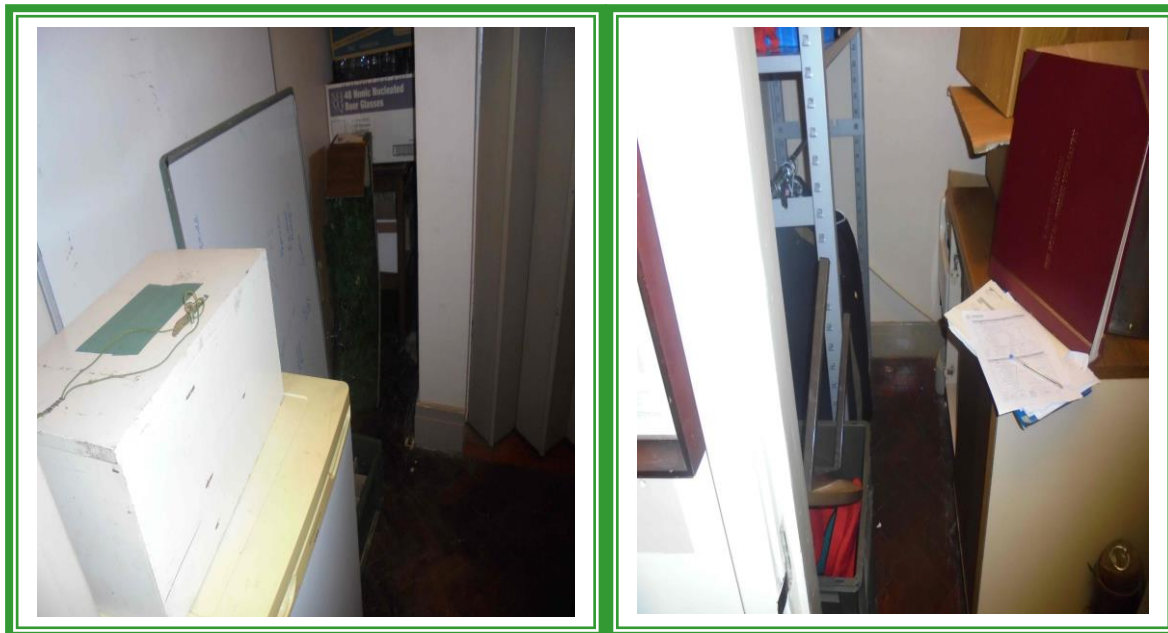




**Item No: 40**

**Sample No: N/A**

**Location: Stores X2**



<b>Material Description:</b>	Visual Inspection – No Suspect Materials Found	
<b>Identification:</b>	N/A	
<b>Approx. quantity:</b>	N/A	
<b>Accessibility</b>	N/A	<i>Assessment Score</i>
<b>Product type:</b>		N/A
<b>Extent of Damage:</b>		N/A
<b>Surface Treatment:</b>		N/A
<b>Asbestos type:</b>		N/A
<b>Material Assessment Score:</b>		N/A
<b>Priority Assessment Score:</b>		N/A
<b>Action:</b>	N/A	
<b>Comments:</b>	N/A	

Document Name	Author	Issued by	Revision Number	Issue Date	Page No
2019	Emma Humphreys	Armour AS	0	14/08/2019	56

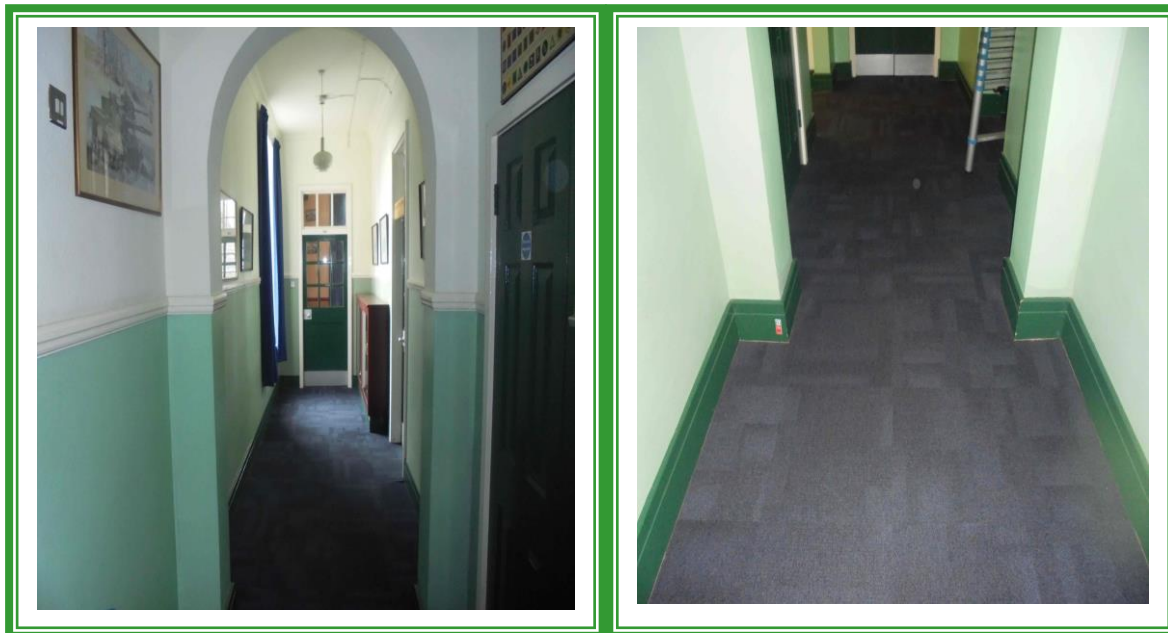




**Item No:41**

**Sample No: N/A**

**Location: Corridor - First Floor**



<b>Material Description:</b>	Visual Inspection – No Suspect Materials Found	
<b>Identification:</b>	N/A	
<b>Approx. quantity:</b>	N/A	
<b>Accessibility</b>	N/A	<i>Assessment Score</i>
<b>Product type:</b>		N/A
<b>Extent of Damage:</b>		N/A
<b>Surface Treatment:</b>		N/A
<b>Asbestos type:</b>		N/A
<b>Material Assessment Score:</b>		N/A
<b>Priority Assessment Score:</b>		N/A
<b>Action:</b>	N/A	
<b>Comments:</b>	N/A	

Document Name	Author	Issued by	Revision Number	Issue Date	Page No
2019	Emma Humphreys	Armour AS	0	14/08/2019	57

**Item No: 42****Sample No: 9****Location: Stairwell and lobby - Ground Floor**

<b>Material Description:</b>	Stair Nosing	
<b>Identification:</b>	Sampled – No Asbestos Detected	
<b>Approx. quantity:</b>	20LM	
<b>Accessibility</b>	High	<i>Assessment Score</i>
<b>Product type:</b>		N/A
<b>Extent of Damage:</b>		N/A
<b>Surface Treatment:</b>		N/A
<b>Asbestos type:</b>		N/A
<b>Material Assessment Score:</b>		N/A
<b>Priority Assessment Score:</b>		N/A
<b>Action:</b>	N/A	
<b>Comments:</b>	N/A	

Document Name	Author	Issued by	Revision Number	Issue Date	Page No
2019	Emma Humphreys	Armour AS	0	14/08/2019	58



**Item No: 43**

**Sample No: N/A**

**Location: WC – Ground Floor**



<b>Material Description:</b>	Visual Inspection – No Suspect Materials Found	
<b>Identification:</b>	N/A	
<b>Approx. quantity:</b>	N/A	
<b>Accessibility</b>	N/A	<i>Assessment Score</i>
<b>Product type:</b>		N/A
<b>Extent of Damage:</b>		N/A
<b>Surface Treatment:</b>		N/A
<b>Asbestos type:</b>		N/A
<b>Material Assessment Score:</b>		N/A
<b>Priority Assessment Score:</b>		N/A
<b>Action:</b>	N/A	
<b>Comments:</b>	N/A	

Document Name	Author	Issued by	Revision Number	Issue Date	Page No
2019	Emma Humphreys	Armour AS	0	14/08/2019	59



**Item No: 44**

**Sample No: N/A**

**Location: Corridor – Ground Floor**



<b>Material Description:</b>	Visual Inspection – No Suspect Materials Found	
<b>Identification:</b>	N/A	
<b>Approx. quantity:</b>	N/A	
<b>Accessibility</b>	N/A	<i>Assessment Score</i>
<b>Product type:</b>		N/A
<b>Extent of Damage:</b>		N/A
<b>Surface Treatment:</b>		N/A
<b>Asbestos type:</b>		N/A
<b>Material Assessment Score:</b>		N/A
<b>Priority Assessment Score:</b>		N/A
<b>Action:</b>	N/A	
<b>Comments:</b>	Bitumen under parquet flooring (as sample 7)	

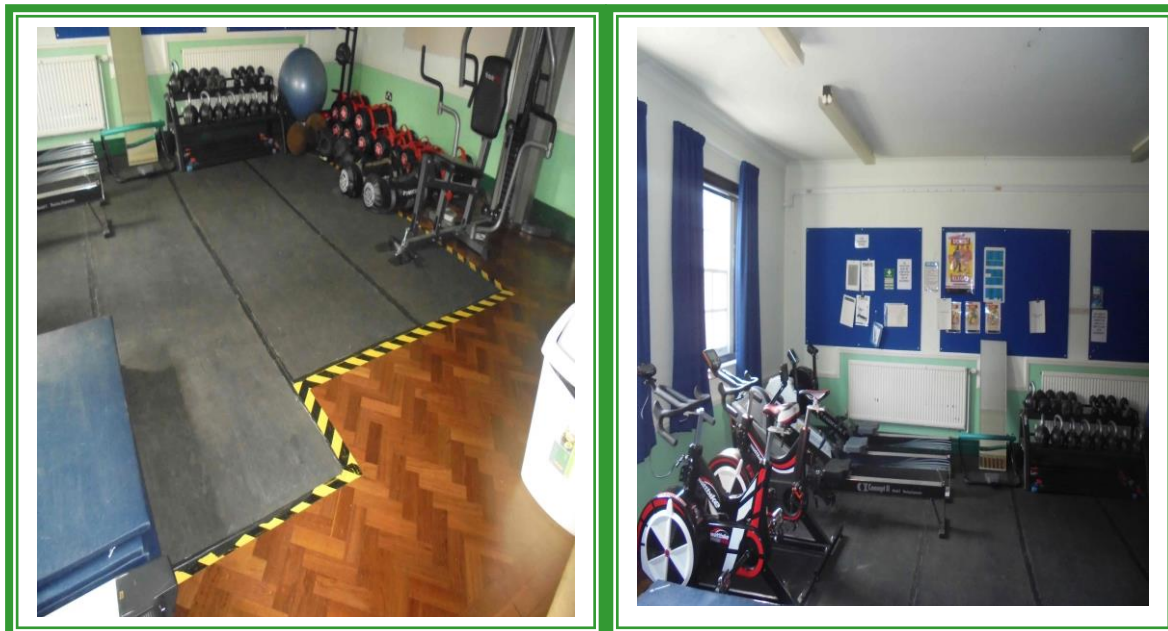
Document Name	Author	Issued by	Revision Number	Issue Date	Page No
2019	Emma Humphreys	Armour AS	0	14/08/2019	60



**Item No: 46**

**Sample No: N/A**

**Location: Gym – Ground Floor**



<b>Material Description:</b>	Visual Inspection – No Suspect Materials Found	
<b>Identification:</b>	N/A	
<b>Approx. quantity:</b>	N/A	
<b>Accessibility</b>	N/A	<i>Assessment Score</i>
<b>Product type:</b>		N/A
<b>Extent of Damage:</b>		N/A
<b>Surface Treatment:</b>		N/A
<b>Asbestos type:</b>		N/A
<b>Material Assessment Score:</b>		N/A
<b>Priority Assessment Score:</b>		N/A
<b>Action:</b>	N/A	
<b>Comments:</b>	Bitumen under parquet flooring as sample 7	

Document Name	Author	Issued by	Revision Number	Issue Date	Page No
2019	Emma Humphreys	Armour AS	0	14/08/2019	61





**Item No: 47**

**Sample No: 10**

**Location: Lobby – Ground Floor**



<b>Material Description:</b>	Bitumen under parquet flooring	
<b>Identification:</b>	Sampled – No Asbestos Detected	
<b>Approx. quantity:</b>	8M2	
<b>Accessibility</b>	Low	<i>Assessment Score</i>
<b>Product type:</b>		N/A
<b>Extent of Damage:</b>		N/A
<b>Surface Treatment:</b>		N/A
<b>Asbestos type:</b>		N/A
<b>Material Assessment Score:</b>		N/A
<b>Priority Assessment Score:</b>		N/A
<b>Action:</b>	N/A	
<b>Comments:</b>	Treat as uniform under parquet flooring throughout building	

Document Name	Author	Issued by	Revision Number	Issue Date	Page No
2019	Emma Humphreys	Armour AS	0	14/08/2019	62

**Item No: 48****Sample No: N/A****Location: WC's, shower and Locker Room**

<b>Material Description:</b>	Visual Inspection – No Suspect Materials Found	
<b>Identification:</b>	N/A	
<b>Approx. quantity:</b>	N/A	
<b>Accessibility</b>	N/A	<i>Assessment Score</i>
<b>Product type:</b>		N/A
<b>Extent of Damage:</b>		N/A
<b>Surface Treatment:</b>		N/A
<b>Asbestos type:</b>		N/A
<b>Material Assessment Score:</b>		N/A
<b>Priority Assessment Score:</b>		N/A
<b>Action:</b>	N/A	
<b>Comments:</b>	N/A	

Document Name	Author	Issued by	Revision Number	Issue Date	Page No
2019	Emma Humphreys	Armour AS	0	14/08/2019	63

**Item No: 50****Sample No: 12****Location: Kitchen – Ground Floor**

<b>Material Description:</b>	Panels to door	
<b>Identification:</b>	Sampled – No Asbestos Detected	
<b>Approx. quantity:</b>	2M2	
<b>Accessibility</b>	Medium	<i>Assessment Score</i>
<b>Product type:</b>		N/A
<b>Extent of Damage:</b>		N/A
<b>Surface Treatment:</b>		N/A
<b>Asbestos type:</b>		N/A
<b>Material Assessment Score:</b>		N/A
<b>Priority Assessment Score:</b>		N/A
<b>Action:</b>	N/A	
<b>Comments:</b>	N/A	

Document Name	Author	Issued by	Revision Number	Issue Date	Page No
2019	Emma Humphreys	Armour AS	0	14/08/2019	64



**Item No: 51**

**Sample No: N/A**

**Location: WC's X 3 – Ground Floor**



<b>Material Description:</b>	Visual Inspection – No Suspect Materials Found	
<b>Identification:</b>	N/A	
<b>Approx. quantity:</b>	N/A	
<b>Accessibility</b>	N/A	<i>Assessment Score</i>
<b>Product type:</b>		N/A
<b>Extent of Damage:</b>		N/A
<b>Surface Treatment:</b>		N/A
<b>Asbestos type:</b>		N/A
<b>Material Assessment Score:</b>		N/A
<b>Priority Assessment Score:</b>		N/A
<b>Action:</b>	N/A	
<b>Comments:</b>	N/A	

Document Name	Author	Issued by	Revision Number	Issue Date	Page No
2019	Emma Humphreys	Armour AS	0	14/08/2019	65





**Item No: 52**

**Sample No: N/A**

**Location: Corridor – Ground Floor**



<b>Material Description:</b>	Visual Inspection – No Suspect Materials Found	
<b>Identification:</b>	N/A	
<b>Approx. quantity:</b>	N/A	
<b>Accessibility</b>	N/A	<i>Assessment Score</i>
<b>Product type:</b>		N/A
<b>Extent of Damage:</b>		N/A
<b>Surface Treatment:</b>		N/A
<b>Asbestos type:</b>		N/A
<b>Material Assessment Score:</b>		N/A
<b>Priority Assessment Score:</b>		N/A
<b>Action:</b>	N/A	
<b>Comments:</b>	N/A	

Document Name	Author	Issued by	Revision Number	Issue Date	Page No
2019	Emma Humphreys	Armour AS	0	14/08/2019	66

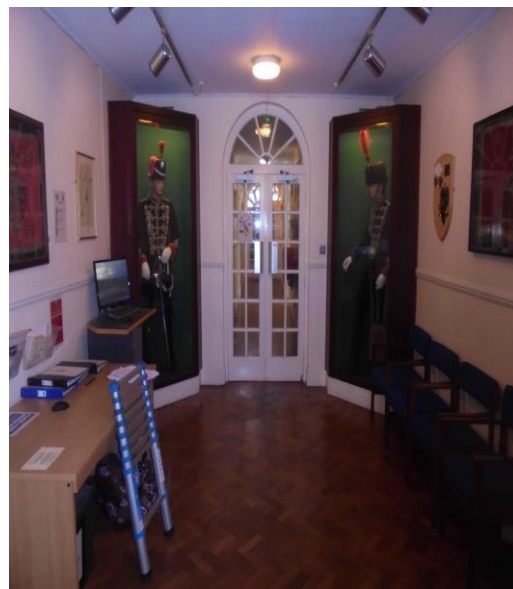




**Item No: 53**

**Sample No: N/A**

**Location: Lobby – Ground Floor**



<b>Material Description:</b>	Visual Inspection – No Suspect Materials Found	
<b>Identification:</b>	N/A	
<b>Approx. quantity:</b>	N/A	
<b>Accessibility</b>	N/A	<i>Assessment Score</i>
<b>Product type:</b>		N/A
<b>Extent of Damage:</b>		N/A
<b>Surface Treatment:</b>		N/A
<b>Asbestos type:</b>		N/A
<b>Material Assessment Score:</b>		N/A
<b>Priority Assessment Score:</b>		N/A
<b>Action:</b>	N/A	
<b>Comments:</b>	Bitumen under parquet flooring (as sample 10)	

Document Name	Author	Issued by	Revision Number	Issue Date	Page No
2019	Emma Humphreys	Armour AS	0	14/08/2019	67

**Item No: 54****Sample No: N/A****Location: Electrics Room**

<b>Material Description:</b>	Visual Inspection – No Suspect Materials Found	
<b>Identification:</b>	N/A	
<b>Approx. quantity:</b>	N/A	
<b>Accessibility</b>	N/A	<i>Assessment Score</i>
<b>Product type:</b>		N/A
<b>Extent of Damage:</b>		N/A
<b>Surface Treatment:</b>		N/A
<b>Asbestos type:</b>		N/A
<b>Material Assessment Score:</b>		N/A
<b>Priority Assessment Score:</b>		N/A
<b>Action:</b>	N/A	
<b>Comments:</b>	Modern electrics	

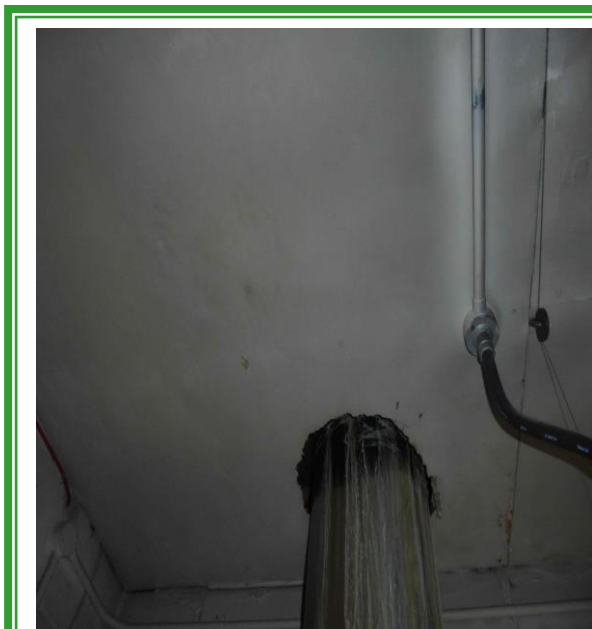
Document Name	Author	Issued by	Revision Number	Issue Date	Page No
2019	Emma Humphreys	Armour AS	0	14/08/2019	68



**Item No: 55**

**Sample No: 13**

**Location: Boiler room - Ground floor**



<b>Material Description:</b>	Insulation board ceiling panels	
<b>Identification:</b>	Sampled – No Asbestos Detected	
<b>Approx. quantity:</b>	10M2	
<b>Accessibility</b>	Medium	<i>Assessment Score</i>
<b>Product type:</b>		N/A
<b>Extent of Damage:</b>		N/A
<b>Surface Treatment:</b>		N/A
<b>Asbestos type:</b>		N/A
<b>Material Assessment Score:</b>		N/A
<b>Priority Assessment Score:</b>		N/A
<b>Action:</b>	N/A	
<b>Comments:</b>	N/A	

Document Name	Author	Issued by	Revision Number	Issue Date	Page No
2019	Emma Humphreys	Armour AS	0	14/08/2019	69



**Item No: 58**

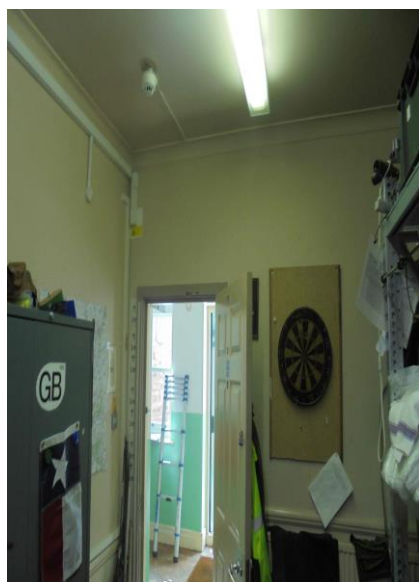
**Sample No: N/A**

**Location: The Somme classroom – Ground Floor**



<b>Material Description:</b>	Visual Inspection – No Suspect Materials Found	
<b>Identification:</b>	N/A	
<b>Approx. quantity:</b>	N/A	
<b>Accessibility</b>	N/A	<i>Assessment Score</i>
<b>Product type:</b>		N/A
<b>Extent of Damage:</b>		N/A
<b>Surface Treatment:</b>		N/A
<b>Asbestos type:</b>		N/A
<b>Material Assessment Score:</b>		N/A
<b>Priority Assessment Score:</b>		N/A
<b>Action:</b>	N/A	
<b>Comments:</b>	Bitumen under parquet flooring (as sample 10)	

Document Name	Author	Issued by	Revision Number	Issue Date	Page No
2019	Emma Humphreys	Armour AS	0	14/08/2019	70

**Item No: 60****Sample No: N/A****Location: Classroom, Office and Lobby**

<b>Material Description:</b>	Visual Inspection – No Suspect Materials Found	
<b>Identification:</b>	N/A	
<b>Approx. quantity:</b>	N/A	
<b>Accessibility</b>	N/A	<i>Assessment Score</i>
<b>Product type:</b>		N/A
<b>Extent of Damage:</b>		N/A
<b>Surface Treatment:</b>		N/A
<b>Asbestos type:</b>		N/A
<b>Material Assessment Score:</b>		N/A
<b>Priority Assessment Score:</b>		N/A
<b>Action:</b>	N/A	
<b>Comments:</b>	Bitumen under parquet flooring (as sample 10)	

Document Name	Author	Issued by	Revision Number	Issue Date	Page No
2019	Emma Humphreys	Armour AS	0	14/08/2019	71

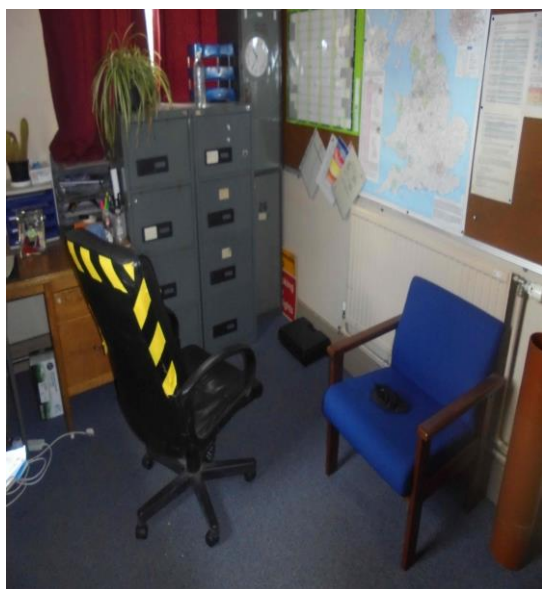




**Item No: 62**

**Sample No: N/A**

**Location: Office (g18) and server room – Ground Floor**



<b>Material Description:</b>	Visual Inspection – No Suspect Materials Found	
<b>Identification:</b>	N/A	
<b>Approx. quantity:</b>	N/A	
<b>Accessibility</b>	N/A	<i>Assessment Score</i>
<b>Product type:</b>		N/A
<b>Extent of Damage:</b>		N/A
<b>Surface Treatment:</b>		N/A
<b>Asbestos type:</b>		N/A
<b>Material Assessment Score:</b>		N/A
<b>Priority Assessment Score:</b>		N/A
<b>Action:</b>	N/A	
<b>Comments:</b>	Bitumen under parquet flooring as sample 10	

Document Name	Author	Issued by	Revision Number	Issue Date	Page No
2019	Emma Humphreys	Armour AS	0	14/08/2019	72

**Item No: 63****Sample No: N/A****Location: Office G18 and Store**

<b>Material Description:</b>	Visual Inspection – No Suspect Materials Found	
<b>Identification:</b>	N/A	
<b>Approx. quantity:</b>	N/A	
<b>Accessibility</b>	N/A	<i>Assessment Score</i>
<b>Product type:</b>		N/A
<b>Extent of Damage:</b>		N/A
<b>Surface Treatment:</b>		N/A
<b>Asbestos type:</b>		N/A
<b>Material Assessment Score:</b>		N/A
<b>Priority Assessment Score:</b>		N/A
<b>Action:</b>	N/A	
<b>Comments:</b>	Bitumen under parquet flooring as sample 10	

Document Name	Author	Issued by	Revision Number	Issue Date	Page No
2019	Emma Humphreys	Armour AS	0	14/08/2019	73



**Item No: 64**

**Sample No: N/A**

**Location: Armoury Store – Ground Floor**



<b>Material Description:</b>	Visual Inspection – No Suspect Materials Found	
<b>Identification:</b>	N/A	
<b>Approx. quantity:</b>	N/A	
<b>Accessibility</b>	N/A	<i>Assessment Score</i>
<b>Product type:</b>		N/A
<b>Extent of Damage:</b>		N/A
<b>Surface Treatment:</b>		N/A
<b>Asbestos type:</b>		N/A
<b>Material Assessment Score:</b>		N/A
<b>Priority Assessment Score:</b>		N/A
<b>Action:</b>	N/A	
<b>Comments:</b>	Bitumen under parquet flooring as sample 10	

Document Name	Author	Issued by	Revision Number	Issue Date	Page No
2019	Emma Humphreys	Armour AS	0	14/08/2019	74



**Item No: 65**

**Sample No: N/A**

**Location: Offices G20 and G21 - Ground Floor**



<b>Material Description:</b>	Visual Inspection – No Suspect Materials Found	
<b>Identification:</b>	N/A	
<b>Approx. quantity:</b>	N/A	
<b>Accessibility</b>	N/A	<i>Assessment Score</i>
<b>Product type:</b>		N/A
<b>Extent of Damage:</b>		N/A
<b>Surface Treatment:</b>		N/A
<b>Asbestos type:</b>		N/A
<b>Material Assessment Score:</b>		N/A
<b>Priority Assessment Score:</b>		N/A
<b>Action:</b>	N/A	
<b>Comments:</b>	Bitumen under parquet flooring as sample 10	

Document Name	Author	Issued by	Revision Number	Issue Date	Page No
2019	Emma Humphreys	Armour AS	0	14/08/2019	75





**Item No: 67**

**Sample No: N/A**

**Location: IT rooms - Ground Floor**



<b>Material Description:</b>	Visual Inspection – No Suspect Materials Found	
<b>Identification:</b>	N/A	
<b>Approx. quantity:</b>	N/A	
<b>Accessibility</b>	N/A	<i>Assessment Score</i>
<b>Product type:</b>		N/A
<b>Extent of Damage:</b>		N/A
<b>Surface Treatment:</b>		N/A
<b>Asbestos type:</b>		N/A
<b>Material Assessment Score:</b>		N/A
<b>Priority Assessment Score:</b>		N/A
<b>Action:</b>	N/A	
<b>Comments:</b>	Bitumen under parquet flooring as sample 10	

Document Name	Author	Issued by	Revision Number	Issue Date	Page No
2019	Emma Humphreys	Armour AS	0	14/08/2019	76





**Item No: 68**

**Sample No: N/A**

**Location: Secure stores X2**



<b>Material Description:</b>	Visual Inspection – No Suspect Materials Found	
<b>Identification:</b>	N/A	
<b>Approx. quantity:</b>	N/A	
<b>Accessibility</b>	N/A	<i>Assessment Score</i>
<b>Product type:</b>		N/A
<b>Extent of Damage:</b>		N/A
<b>Surface Treatment:</b>		N/A
<b>Asbestos type:</b>		N/A
<b>Material Assessment Score:</b>		N/A
<b>Priority Assessment Score:</b>		N/A
<b>Action:</b>	N/A	
<b>Comments:</b>	Bitumen under parquet flooring as sample 10	

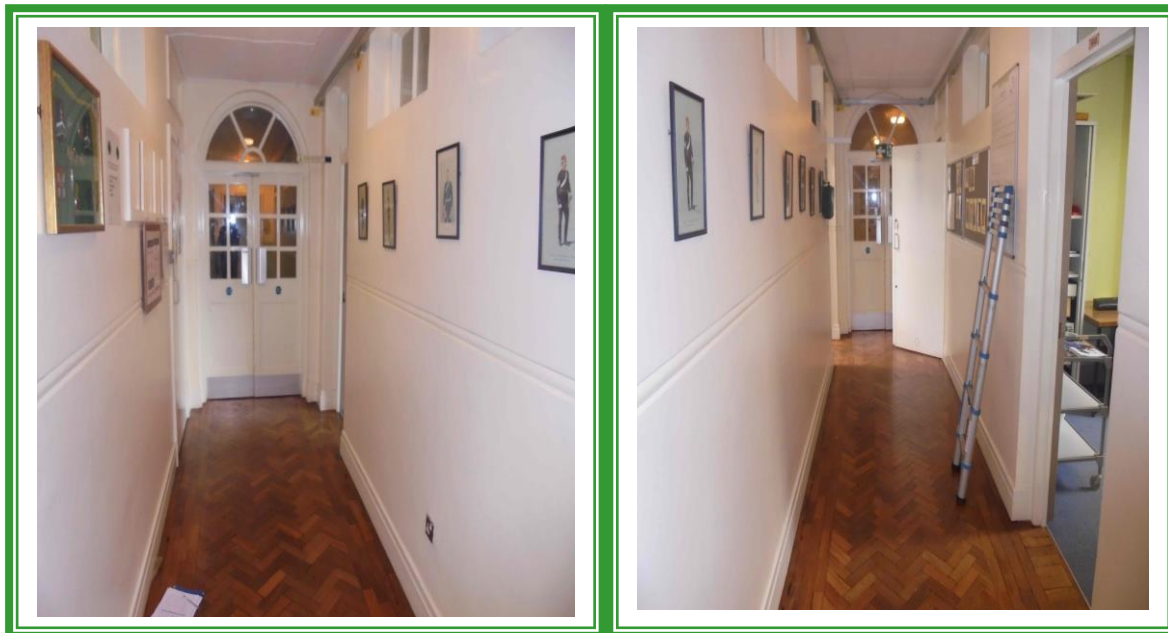
Document Name	Author	Issued by	Revision Number	Issue Date	Page No
2019	Emma Humphreys	Armour AS	0	14/08/2019	77



**Item No: 69**

**Sample No: N/A**

**Location: Corridors x 2 - Ground Floor**



<b>Material Description:</b>	Visual Inspection – No Suspect Materials Found	
<b>Identification:</b>	N/A	
<b>Approx. quantity:</b>	N/A	
<b>Accessibility</b>	N/A	<i>Assessment Score</i>
<b>Product type:</b>		N/A
<b>Extent of Damage:</b>		N/A
<b>Surface Treatment:</b>		N/A
<b>Asbestos type:</b>		N/A
<b>Material Assessment Score:</b>		N/A
<b>Priority Assessment Score:</b>		N/A
<b>Action:</b>	N/A	
<b>Comments:</b>	Bitumen under parquet flooring as sample 10	

Document Name	Author	Issued by	Revision Number	Issue Date	Page No
2019	Emma Humphreys	Armour AS	0	14/08/2019	78

**Item No: 70****Sample No: N/A****Location: Offices G01, G02 and G03 - Ground Floor**

<b>Material Description:</b>	Visual Inspection – No Suspect Materials Found	
<b>Identification:</b>	N/A	
<b>Approx. quantity:</b>	N/A	
<b>Accessibility</b>	N/A	<i>Assessment Score</i>
<b>Product type:</b>		N/A
<b>Extent of Damage:</b>		N/A
<b>Surface Treatment:</b>		N/A
<b>Asbestos type:</b>		N/A
<b>Material Assessment Score:</b>		N/A
<b>Priority Assessment Score:</b>		N/A
<b>Action:</b>	N/A	
<b>Comments:</b>	Bitumen under parquet flooring as sample 10	

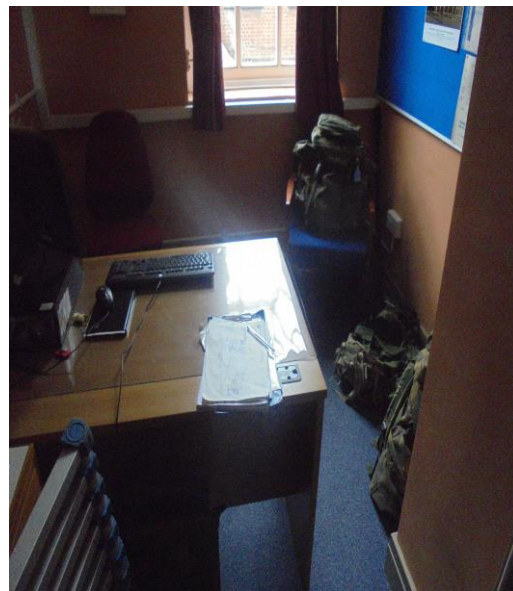
Document Name	Author	Issued by	Revision Number	Issue Date	Page No
2019	Emma Humphreys	Armour AS	0	14/08/2019	79



**Item No:71**

**Sample No: N/A**

**Location: Offices G04, G05 and store G06 - Ground Floor**



<b>Material Description:</b>	Visual Inspection – No Suspect Materials Found	
<b>Identification:</b>	N/A	
<b>Approx. quantity:</b>	N/A	
<b>Accessibility</b>	N/A	<i>Assessment Score</i>
<b>Product type:</b>		N/A
<b>Extent of Damage:</b>		N/A
<b>Surface Treatment:</b>		N/A
<b>Asbestos type:</b>		N/A
<b>Material Assessment Score:</b>		N/A
<b>Priority Assessment Score:</b>		N/A
<b>Action:</b>	N/A	
<b>Comments:</b>	Bitumen under parquet flooring as sample 10	

Document Name	Author	Issued by	Revision Number	Issue Date	Page No
2019	Emma Humphreys	Armour AS	0	14/08/2019	80



**Item No: 72**

**Sample No: N/A**

**Location: Corridor - Ground Floor**



<b>Material Description:</b>	Visual Inspection – No Suspect Materials Found	
<b>Identification:</b>	N/A	
<b>Approx. quantity:</b>	N/A	
<b>Accessibility</b>	N/A	<i>Assessment Score</i>
<b>Product type:</b>		N/A
<b>Extent of Damage:</b>		N/A
<b>Surface Treatment:</b>		N/A
<b>Asbestos type:</b>		N/A
<b>Material Assessment Score:</b>		N/A
<b>Priority Assessment Score:</b>		N/A
<b>Action:</b>	N/A	
<b>Comments:</b>	Bitumen under parquet flooring (as sample 10)	

Document Name	Author	Issued by	Revision Number	Issue Date	Page No
2019	Emma Humphreys	Armour AS	0	14/08/2019	81



**Item No: 73****Sample No: N/A****Location: Bedrooms x 4 - Caretakers Flat - Ground Floor**

<b>Material Description:</b>	Visual Inspection – No Suspect Materials Found	
<b>Identification:</b>	N/A	
<b>Approx. quantity:</b>	N/A	
<b>Accessibility</b>	N/A	<i>Assessment Score</i>
<b>Product type:</b>		N/A
<b>Extent of Damage:</b>		N/A
<b>Surface Treatment:</b>		N/A
<b>Asbestos type:</b>		N/A
<b>Material Assessment Score:</b>		N/A
<b>Priority Assessment Score:</b>		N/A
<b>Action:</b>	N/A	
<b>Comments:</b>	Bitumen under parquet flooring as sample 10	

Document Name	Author	Issued by	Revision Number	Issue Date	Page No
2019	Emma Humphreys	Armour AS	0	14/08/2019	82



**Item No: 74**

**Sample No: N/A**

**Location: Loft space**



<b>Material Description:</b>	Visual Inspection – No Suspect Materials Found	
<b>Identification:</b>	N/A	
<b>Approx. quantity:</b>	N/A	
<b>Accessibility</b>	N/A	<i>Assessment Score</i>
<b>Product type:</b>		N/A
<b>Extent of Damage:</b>		N/A
<b>Surface Treatment:</b>		N/A
<b>Asbestos type:</b>		N/A
<b>Material Assessment Score:</b>		N/A
<b>Priority Assessment Score:</b>		N/A
<b>Action:</b>	N/A	
<b>Comments:</b>	No access to loft due to height of hatch	

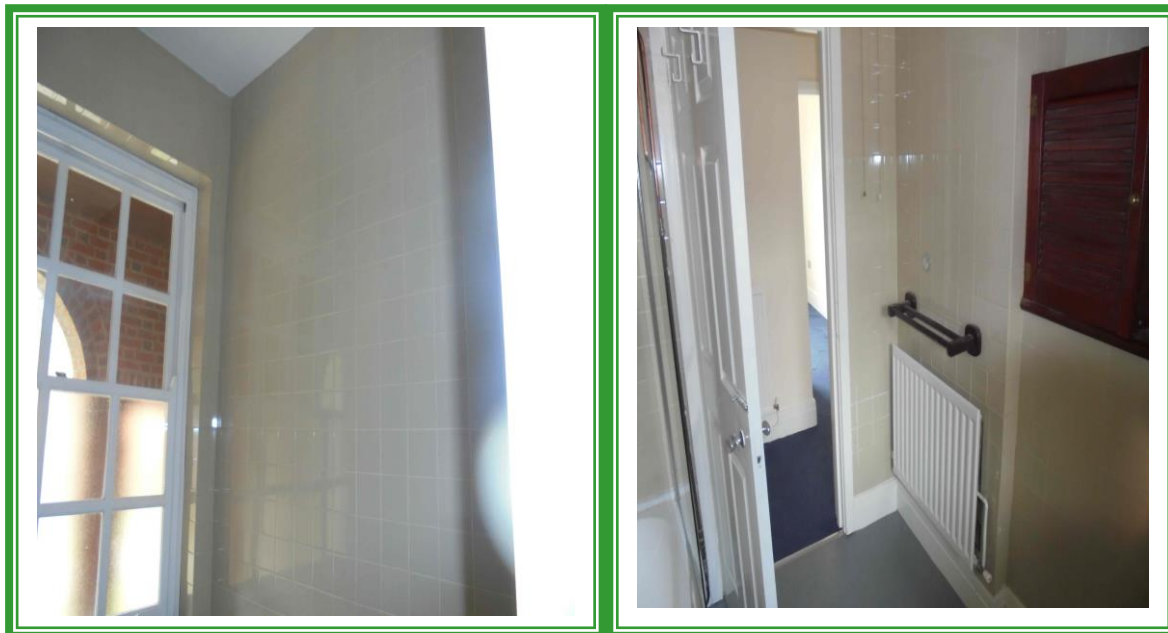
Document Name	Author	Issued by	Revision Number	Issue Date	Page No
2019	Emma Humphreys	Armour AS	0	14/08/2019	83



**Item No: 75**

**Sample No: N/A**

**Location: Bathroom - Ground Floor**



<b>Material Description:</b>	Visual Inspection – No Suspect Materials Found	
<b>Identification:</b>	N/A	
<b>Approx. quantity:</b>	N/A	
<b>Accessibility</b>	N/A	<i>Assessment Score</i>
<b>Product type:</b>		N/A
<b>Extent of Damage:</b>		N/A
<b>Surface Treatment:</b>		N/A
<b>Asbestos type:</b>		N/A
<b>Material Assessment Score:</b>		N/A
<b>Priority Assessment Score:</b>		N/A
<b>Action:</b>	N/A	
<b>Comments:</b>	N/A	

Document Name	Author	Issued by	Revision Number	Issue Date	Page No
2019	Emma Humphreys	Armour AS	0	14/08/2019	84

**Item No:76****Sample No: N/A****Location: Kitchen - Ground Floor**

<b>Material Description:</b>	Visual Inspection – No Suspect Materials Found	
<b>Identification:</b>	N/A	
<b>Approx. quantity:</b>	N/A	
<b>Accessibility</b>	N/A	<i>Assessment Score</i>
<b>Product type:</b>		N/A
<b>Extent of Damage:</b>		N/A
<b>Surface Treatment:</b>		N/A
<b>Asbestos type:</b>		N/A
<b>Material Assessment Score:</b>		N/A
<b>Priority Assessment Score:</b>		N/A
<b>Action:</b>	N/A	
<b>Comments:</b>	Modern sink pad and boiler	

Document Name	Author	Issued by	Revision Number	Issue Date	Page No
2019	Emma Humphreys	Armour AS	0	14/08/2019	85



**Item No: 77**

**Sample No: N/A**

**Location: Corridor and cupboard - Ground Floor**



<b>Material Description:</b>	Visual Inspection – No Suspect Materials Found	
<b>Identification:</b>	N/A	
<b>Approx. quantity:</b>	N/A	
<b>Accessibility</b>	N/A	<i>Assessment Score</i>
<b>Product type:</b>		N/A
<b>Extent of Damage:</b>		N/A
<b>Surface Treatment:</b>		N/A
<b>Asbestos type:</b>		N/A
<b>Material Assessment Score:</b>		N/A
<b>Priority Assessment Score:</b>		N/A
<b>Action:</b>	N/A	
<b>Comments:</b>	N/A	

Document Name	Author	Issued by	Revision Number	Issue Date	Page No
2019	Emma Humphreys	Armour AS	0	14/08/2019	86

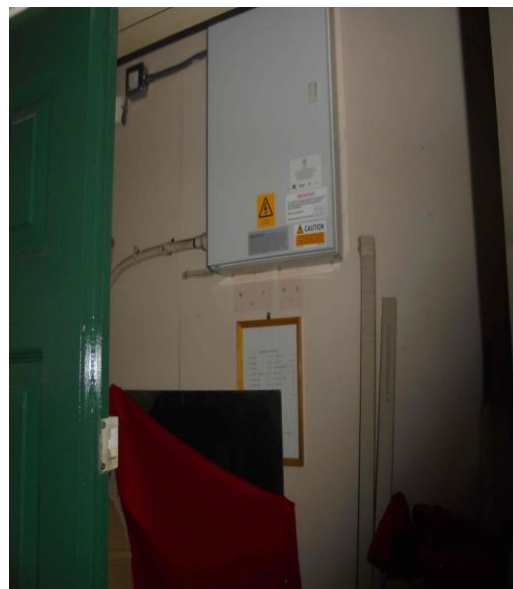




**Item No: 78**

**Sample No: N/A**

**Location: Electrical Cupboard**



<b>Material Description:</b>	Visual Inspection – No Suspect Materials Found	
<b>Identification:</b>	N/A	
<b>Approx. quantity:</b>	N/A	
<b>Accessibility</b>	N/A	<i>Assessment Score</i>
<b>Product type:</b>		N/A
<b>Extent of Damage:</b>		N/A
<b>Surface Treatment:</b>		N/A
<b>Asbestos type:</b>		N/A
<b>Material Assessment Score:</b>		N/A
<b>Priority Assessment Score:</b>		N/A
<b>Action:</b>	N/A	
<b>Comments:</b>	Bitumen under parquet flooring (as sample 10)	

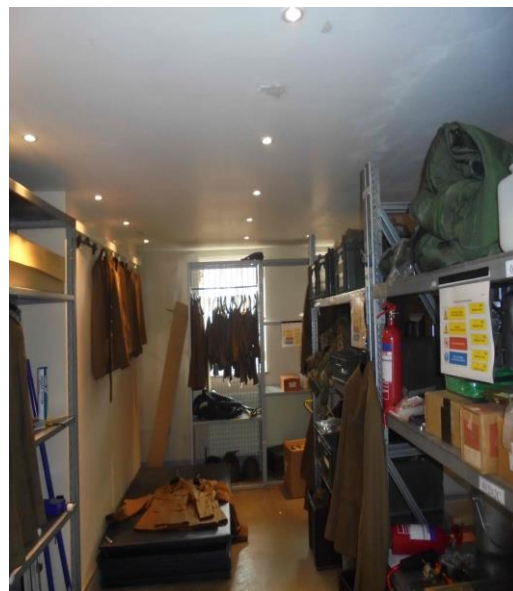
Document Name	Author	Issued by	Revision Number	Issue Date	Page No
2019	Emma Humphreys	Armour AS	0	14/08/2019	87



**Item No: 81**

**Sample No: N/A**

**Location: Store - Ground Floor**



<b>Material Description:</b>	Visual Inspection – No Suspect Materials Found	
<b>Identification:</b>	N/A	
<b>Approx. quantity:</b>	N/A	
<b>Accessibility</b>	N/A	<i>Assessment Score</i>
<b>Product type:</b>		N/A
<b>Extent of Damage:</b>		N/A
<b>Surface Treatment:</b>		N/A
<b>Asbestos type:</b>		N/A
<b>Material Assessment Score:</b>		N/A
<b>Priority Assessment Score:</b>		N/A
<b>Action:</b>	N/A	
<b>Comments:</b>	N/A	

Document Name	Author	Issued by	Revision Number	Issue Date	Page No
2019	Emma Humphreys	Armour AS	0	14/08/2019	88



**Item No: 83**

**Sample No: N/A**

**Location: Water heater room - Ground Floor**



<b>Material Description:</b>	Visual Inspection – No Suspect Materials Found	
<b>Identification:</b>	N/A	
<b>Approx. quantity:</b>	N/A	
<b>Accessibility</b>	N/A	<i>Assessment Score</i>
<b>Product type:</b>		N/A
<b>Extent of Damage:</b>		N/A
<b>Surface Treatment:</b>		N/A
<b>Asbestos type:</b>		N/A
<b>Material Assessment Score:</b>		N/A
<b>Priority Assessment Score:</b>		N/A
<b>Action:</b>	N/A	
<b>Comments:</b>	Bitumen under parquet floor (as sample 10)	

Document Name	Author	Issued by	Revision Number	Issue Date	Page No
2019	Emma Humphreys	Armour AS	0	14/08/2019	89



**Item No: 84**

**Sample No: N/A**

**Location: medics office - First Floor**



<b>Material Description:</b>	Visual Inspection – No Suspect Materials Found	
<b>Identification:</b>	N/A	
<b>Approx. quantity:</b>	N/A	
<b>Accessibility</b>	N/A	<i>Assessment Score</i>
<b>Product type:</b>		N/A
<b>Extent of Damage:</b>		N/A
<b>Surface Treatment:</b>		N/A
<b>Asbestos type:</b>		N/A
<b>Material Assessment Score:</b>		N/A
<b>Priority Assessment Score:</b>		N/A
<b>Action:</b>	N/A	
<b>Comments:</b>	Bitumen under parquet flooring as sample 10	

Document Name	Author	Issued by	Revision Number	Issue Date	Page No
2019	Emma Humphreys	Armour AS	0	14/08/2019	90



**Item No: 85****Sample No: N/A****Location: External Store - Ground Floor**

<b>Material Description:</b>	Visual Inspection – No Suspect Materials Found	
<b>Identification:</b>	N/A	
<b>Approx. quantity:</b>	N/A	
<b>Accessibility</b>	N/A	<i>Assessment Score</i>
<b>Product type:</b>		N/A
<b>Extent of Damage:</b>		N/A
<b>Surface Treatment:</b>		N/A
<b>Asbestos type:</b>		N/A
<b>Material Assessment Score:</b>		N/A
<b>Priority Assessment Score:</b>		N/A
<b>Action:</b>	N/A	
<b>Comments:</b>	N/A	

Document Name	Author	Issued by	Revision Number	Issue Date	Page No
2019	Emma Humphreys	Armour AS	0	14/08/2019	91



## **Section 6: Survey Objectives**

Instructions were received from Sue Morrell of Wessex RFCA to carry out a Management asbestos survey at Royal Wessex Yeomanry B, Salisbury, SP4 6BY in accordance with HSG264 and Armour Analytical's quality procedures.

The survey was carried out on 10<sup>th</sup> – 11<sup>th</sup> July 2019 by David Kelly with the objective of facilitating a Management report.

This Management survey is characterised as a 'Visual Inspection Sampling and Identification Survey' in HSG264. This type of survey is used to locate and describe, so far as is reasonably practicable, all asbestos containing materials (ACMs) in the building and will by its nature involve the partial destruction of the building's fabric as access is gained to all areas. A full sampling programme is undertaken to identify possible ACMs and estimate the extent of ACMs reported.

The objective of this survey report is to identify, so far as is reasonably practicable, the location, extent, product type and composition of ACMS within the building to enable the building occupants to put management and remedial procedures in place.

Document Name	Author	Issued by	Revision Number	Issue Date	Page No
2019	Emma Humphreys	Armour AS	0	14/08/2019	92

## **Section 7: Survey Techniques**

Each floor, room and area within the scope was systematically inspected for suspect materials thought or known to contain asbestos and where such materials were encountered their location, extent, and composition were recorded.

Where materials of a similar nature exist, to those previously sampled, and a reasoned argument can be made that their composition is likely to be identical further physical sampling was not undertaken.

Photographs were taken of all sample locations, unless otherwise stated.

The analysis of suspect ACMs was undertaken by a UKAS accredited laboratory using the analytical method detailed in *HSG248, Appendix 2 -Asbestos: The analysts' guide for sampling, analysis and clearance procedures*.

Document Name	Author	Issued by	Revision Number	Issue Date	Page No
2019	Emma Humphreys	Armour AS	0	14/08/2019	93

## **Section 8: Survey Caveat**

This report is based upon a management report inspection of an unfamiliar site. During the course of the survey all reasonable efforts were made to identify the physical presence of materials containing asbestos within the building.

A Management Survey is a non-intrusive survey, meaning that access within the fabric of the building is limited. The survey does not include access to the following areas (unless agreed beforehand with the Client and provisions are put in place):

- Within wall or ceiling construction;
- Under fixed flooring;
- Within non-openable boxings;
- Within live electrics, boilers or machinery;
- Where access/visibility is limited in an area due to stored items, furniture or services;
- Areas where there is no safe access to inspect such as floor ducts, lift shafts and loft spaces with no crawlboards;
- High level areas that are too high to safely inspect.
- Within pipework insulation throughout building as this would affect the integrity of services.

Any intrusive works carried out within the building must first be subject to a Refurbishment Asbestos Survey.

This report will be restricted to the areas that fall within the scope of works for project and will not take into account any area's that do not fall within the scope. Any asbestos that is identified within this report will need to be added to the buildings existing information and should not form the basis for a management survey. This survey will not include priority assessments nor will it include a register.

This survey considered the construction of the building, associated fixtures & fittings and associated structures and in no way should it be considered as a ground investigation report.

Services should be disconnected prior to commencement of a Management survey; however, where plant and/or electrical installations are live or appear to be live then these will not be accessed.

This survey report is not a bill of quantities.

Document Name	Author	Issued by	Revision Number	Issue Date	Page No
2019	Emma Humphreys	Armour AS	0	14/08/2019	94

## **Section 9: Survey Notes**

This report has been written with reference to the various Guidance Notes etc, issued, and current at the date of this report and describes circumstances at the site on the date the investigation took place.

Where similar items exist in the building, only one or two samples have been taken to ascertain the material content. It was assumed that similar products were of the same material.

Any person undertaking work within the buildings should be told of the presence of asbestos. This briefing also applies to any other person associated with the site, including staff, sub-contractors and others.

The drawings in the report are not to scale and are illustrative only to indicate approximate locations. The descriptions used are for location identification purposes.

All the recommendations described in this report are based upon assumptions made after consideration of the type of material, condition of the material, its location, analysis result and type of use the area is thought to be subjected to. However, statutory authorities or others could require amendments based on local knowledge, change in legislation, change in use or indeed other conditions or criteria.

Samples taken from floor tiles (or similar material) may include a bitumen adhesive as part of the sample. It is known that some proprietary brands of bitumen have an asbestos content and this will be included as an integral part of the bulk sample unless otherwise stated.

Document Name	Author	Issued by	Revision Number	Issue Date	Page No
2019	Emma Humphreys	Armour AS	0	14/08/2019	95

## Section 10: Material Assessment Algorithm

Variable	Score	Examples
Installation / Product type	1	Vinyl, 'Bakelite', Cement
	2	Asbestos insulating board, paper, rope
	3	Pipe insulation, spray coating, friable debris
Condition / damage	0	Good
	1	Slight / minor damage
	2	Moderate damage – breakage to surface treatment
	3	Major damage – smashed or exposed material
Surface treatment	0	Non-friable e.g. vinyl
	1	Enclosed insulation, encapsulated AIB
	2	Unsealed AIB, encapsulated insulation
	3	Unsealed insulation or spray coating
Asbestos type	1	Chrysotile
	2	Amosite & other amphiboles
	3	Crocidolite

The scores from each of the four sections are added together to produce a risk score:

Risk score	Risk assessment
<b>10 or more</b>	High risk
<b>7 – 9</b>	Medium risk
<b>5 – 6</b>	Low risk
<b>4 &amp; below</b>	Negligible risk

Document Name	Author	Issued by	Revision Number	Issue Date	Page No
2019	Emma Humphreys	Armour AS	0	14/08/2019	96





## Section 11: Certificates of Bulk Analysis



Our Ref: J171204 FI: 14  
Your Ref: 2481  
Date: 16/07/2019

### ENVIROCHEM

Analytical Laboratories Ltd.

12 The Gardens  
Broadcut, Fareham  
Hampshire  
PO16 8SS



Tel: (01329) 287777  
Fax: (01329) 287755  
www.envirochem.co.uk  
office@envirochem.co.uk

### Asbestos Fibre Identification Report

**Client:** Armour Analytical Services Ltd  
Admirals Yard, Station Road, Patchway, Bristol, BS34 6LR

**Site Address:** The Royal Wessex Yeomanry, Salisbury, .

**Sampled By:** Armour Analytical Services Ltd

**Date sampled/received:** 16th July 2019

**Date analysed:** 16th July 2019

**Analyst/s:** Bradley Travis

**Analysis Location:** 12 The Gardens, Broadcut, Fareham, Hampshire, PO16 8SS

#### ANALYTICAL PROCEDURE

Fibre identification was carried out in accordance with the documented 'in-house' methods based on the HSE Guidance Note HSG 248. These employed stereo microscopy, polarized microscopy and dispersion staining techniques.

#### RESULTS

Sample No.	Sample Ref.	Location	Asbestos Detected	Asbestos Type
1	BS563625	Recruit Reception Centre - Kitchen sink pad	Yes	Chrysotile
2	BS563626	Storage Garage - External cement roof tiles	Yes	Chrysotile
3	BS563627	Garage 8/Radio Store - Insulation board wall panels	No	
4	BS563628	Garages 1-11, External - Cement roof edging	Yes	Chrysotile

#### NOTES:

1. Sample(s) were examined for the presence of 6 types of asbestos fibres: crocidolite (blue), amosite (brown), chrysotile (white), anthophyllite, actinolite and tremolite.
2. Samples collected by the client are evaluated using information provided by the client. For samples collected by the client the date of receipt is deemed to be the same as the date sampled.
3. Envirochem is a UKAS accredited laboratory for sampling and identification of asbestos containing materials.
4. Conversely, observations and opinions are outside the scope of UKAS accreditation.
5. The analytical method in the HSG248 does not quantify the amount of asbestos present, therefore UKAS accreditation does not permit quantification.
6. If, during fibre identification, only 1 or 2 fibres are seen and identified as asbestos, then the term 'trace asbestos identified' is used.

SIGNATURE:

Authorised signatory

PRINT NAME: Frances Scott

Reg. No. 2378228 England. Registered Office: Envirochem, 12 The Gardens, Broadcut, Fareham, Hampshire, PO16 8SS.

Page 1 of 4

Document Name	Author	Issued by	Revision Number	Issue Date	Page No
2019	Emma Humphreys	Armour AS	0	14/08/2019	97



**ARMOUR**  
ANALYTICAL SERVICES



Our Ref: J171204 FI: 14  
Your Ref: 2481  
Date: 16/07/2019

## ENVIROCHEM

Analytical Laboratories Ltd.

12 The Gardens  
Broadcut, Fareham  
Hampshire  
PO16 8SS



Tel: (01329) 287777  
Fax: (01329) 287755  
www.envirochem.co.uk  
office@envirochem.co.uk

### Asbestos Fibre Identification Report

**Client:** Armour Analytical Services Ltd  
Admirals Yard, Station Road, Patchway, Bristol, BS34 6LR

**Site Address:** The Royal Wessex Yeomanry, Salisbury, .

**Sampled By:** Armour Analytical Services Ltd

**Date sampled/received:** 16th July 2019

**Date analysed:** 16th July 2019

**Analyst/s:** Bradley Travis

**Analysis Location:** 12 The Gardens, Broadcut, Fareham, Hampshire, PO16 8SS

#### ANALYTICAL PROCEDURE

Fibre identification was carried out in accordance with the documented 'in-house' methods based on the HSE Guidance Note HSG 248. These employed stereo microscopy, polarized microscopy and dispersion staining techniques.

#### RESULTS

Sample No.	Sample Ref.	Location	Asbestos Detected	Asbestos Type
5	BS563629	Armoured Truck Garage Covered Area - Profiled cement roof	Yes	Chrysotile Crocidolite
6	BS563630	Main Building, External - Cement replacement roof tiles	No	
7	BS563631	Main Building, Ladies WC-FF bitumen under parquet flooring	No	
8	BS563632	Bars x 2 - First Floor sink pad	Yes	Chrysotile

#### NOTES:

1. Sample(s) were examined for the presence of 6 types of asbestos fibres: crocidolite (blue), amosite (brown), chrysotile (white), anthophyllite, actinolite and tremolite.
2. Samples collected by the client are evaluated using information provided by the client. For samples collected by the client the date of receipt is deemed to be the same as the date sampled.
3. Envirochem is a UKAS accredited laboratory for sampling and identification of asbestos containing materials.
4. Comments, observations and opinions are outside the scope of UKAS accreditation.
5. The analytical method in the HSG248 does not quantify the amount of asbestos present, therefore UKAS accreditation does not permit quantification.
6. If, during fibre identification, only 1 or 2 fibres are seen and identified as asbestos, then the term 'trace asbestos identified' is used.

SIGNATURE:

Authorised signatory

PRINT NAME: Frances Scott

Reg. No. 2378228 England. Registered Office: Envirochem, 12 The Gardens, Broadcut, Fareham, Hampshire, PO16 8SS.

Page 2 of 4

Document Name	Author	Issued by	Revision Number	Issue Date	Page No
2019	Emma Humphreys	Armour AS	0	14/08/2019	98



**ARMOUR**  
ANALYTICAL SERVICES



Our Ref: J171204 FI: 14  
Your Ref: 2481  
Date: 16/07/2019

## ENVIROCHEM

Analytical Laboratories Ltd.

12 The Gardens  
Broadcut, Fareham  
Hampshire  
PO16 8SS



Tel: (01329) 287777  
Fax: (01329) 287755  
www.envirochem.co.uk  
office@envirochem.co.uk

### Asbestos Fibre Identification Report

**Client:** Armour Analytical Services Ltd  
Admirals Yard, Station Road, Patchway, Bristol, BS34 6LR

**Site Address:** The Royal Wessex Yeomanry, Salisbury, .

**Sampled By:** Armour Analytical Services Ltd

**Date sampled/received:** 16th July 2019

**Date analysed:** 16th July 2019

**Analyst/s:** Bradley Travis

**Analysis Location:** 12 The Gardens, Broadcut, Fareham, Hampshire, PO16 8SS

### ANALYTICAL PROCEDURE

Fibre identification was carried out in accordance with the documented 'in-house' methods based on the HSE Guidance Note HSG 248. These employed stereo microscopy, polarized microscopy and dispersion staining techniques.

### RESULTS

Sample No.	Sample Ref.	Location	Asbestos Detected	Asbestos Type
9	BS563633	Stairwell & Lobby, Ground Floor stair nosing	No	
10	BS563634	Lobby, Ground Floor - Bitumen under parquet flooring	No	
11	BS563635	Kitchen, Ground Floor - Sink pads	Yes	Chrysotile
12	BS563636	Kitchen, Ground Floor - Panels to door	No	

#### NOTES:

1. Sample(s) were examined for the presence of 6 types of asbestos fibres: crocidolite (blue), amosite (brown), chrysotile (white), anthophyllite, actinolite and tremolite.
2. Samples collected by the client are evaluated using information provided by the client. For samples collected by the client the date of receipt is deemed to be the same as the date sampled.
3. Envirochem is a UKAS accredited laboratory for sampling and identification of asbestos containing materials.
4. Comments, observations and opinions are outside the scope of UKAS accreditation.
5. The analytical method in the HSG248 does not quantify the amount of asbestos present, therefore UKAS accreditation does not permit quantification.
6. If, during fibre identification, only 1 or 2 fibres are seen and identified as asbestos, then the term 'trace asbestos identified' is used.

SIGNATURE:

Authorised signatory

PRINT NAME: Frances Scott

Reg. No. 2378228 England. Registered Office: Envirochem, 12 The Gardens, Broadcut, Fareham, Hampshire, PO16 8SS.

Page 3 of 4

Document Name	Author	Issued by	Revision Number	Issue Date	Page No
2019	Emma Humphreys	Armour AS	0	14/08/2019	99



**ARMOUR**  
ANALYTICAL SERVICES



Our Ref: J171204 FI: 14  
Your Ref: 2481  
Date: 16/07/2019

## ENVIROCHEM

Analytical Laboratories Ltd.

12 The Gardens  
Broadcut, Fareham  
Hampshire  
PO16 8SS



Tel: (01329) 287777  
Fax: (01329) 287755  
www.envirochem.co.uk  
office@envirochem.co.uk

### Asbestos Fibre Identification Report

**Client:** Armour Analytical Services Ltd  
Admirals Yard, Station Road, Patchway, Bristol, BS34 6LR

**Site Address:** The Royal Wessex Yeomanry, Salisbury, .

**Sampled By:** Armour Analytical Services Ltd

**Date sampled/received:** 16th July 2019

**Date analysed:** 16th July 2019

**Analyst/s:** Bradley Travis

**Analysis Location:** 12 The Gardens, Broadcut, Fareham, Hampshire, PO16 8SS

### ANALYTICAL PROCEDURE

Fibre identification was carried out in accordance with the documented 'in-house' methods based on the HSE Guidance Note HSG 248. These employed stereo microscopy, polarized microscopy and dispersion staining techniques.

### RESULTS

Sample No.	Sample Ref.	Location	Asbestos Detected	Asbestos Type
13	BS563637	Boiler Room, Ground Floor - Insulating board ceiling	No	
14	BS563638	Boiler Room, Ground Floor - Gaskets	Yes	Chrysotile

#### NOTES:

1. Sample(s) were examined for the presence of 6 types of asbestos fibres: crocidolite (blue), amosite (brown), chrysotile (white), anthophyllite, actinolite and tremolite.
2. Samples collected by the client are evaluated using information provided by the client. For samples collected by the client the date of receipt is deemed to be the same as the date sampled.
3. Envirochem is a UKAS accredited laboratory for sampling and identification of asbestos containing materials.
4. Comments, observations and opinions are outside the scope of UKAS accreditation.
5. The analytical method in the HSG248 does not quantify the amount of asbestos present, therefore UKAS accreditation does not permit quantification.
6. If, during fibre identification, only 1 or 2 fibres are seen and identified as asbestos, then the term 'trace asbestos identified' is used.

SIGNATURE:

Authorised signatory

PRINT NAME: Frances Scott

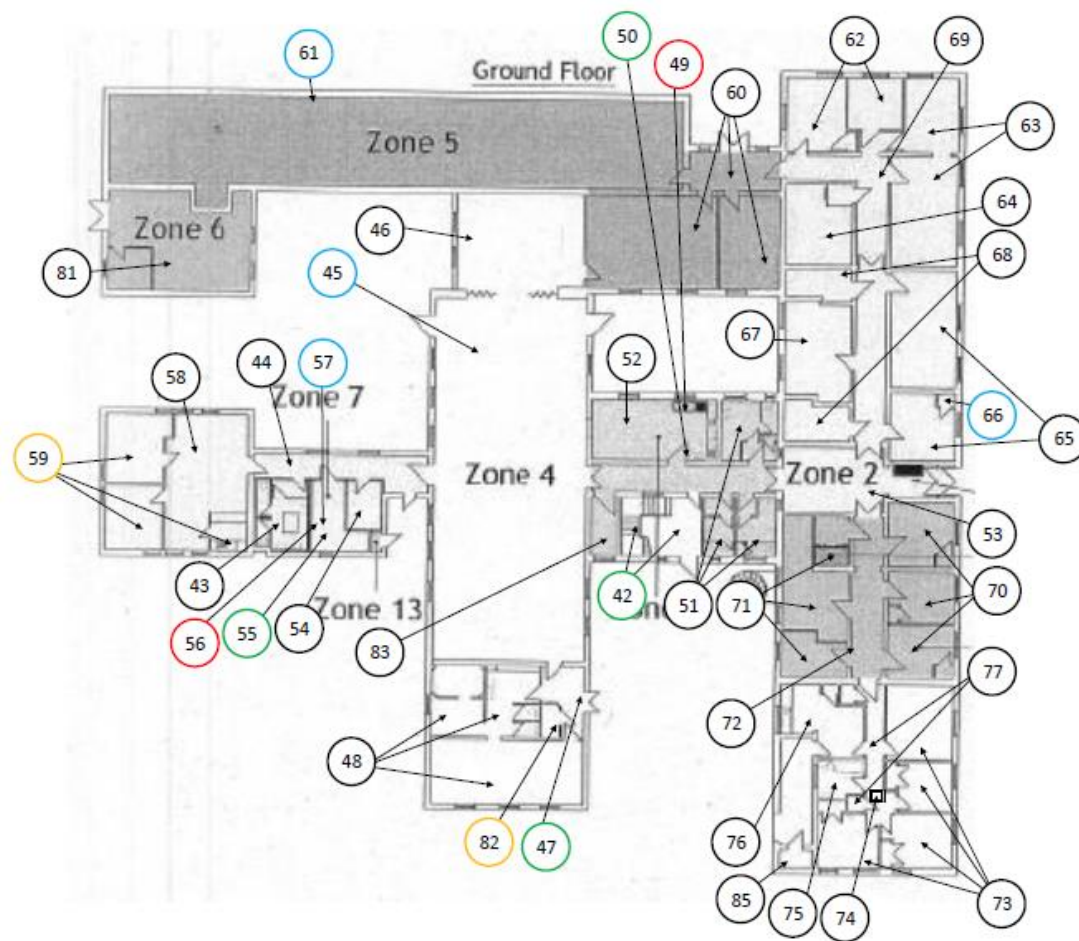
Reg. No. 2378228 England. Registered Office: Envirochem, 12 The Gardens, Broadcut, Fareham, Hampshire, PO16 8SS.






Page 4 of 4

Document Name	Author	Issued by	Revision Number	Issue Date	Page No
2019	Emma Humphreys	Armour AS	0	14/08/2019	100



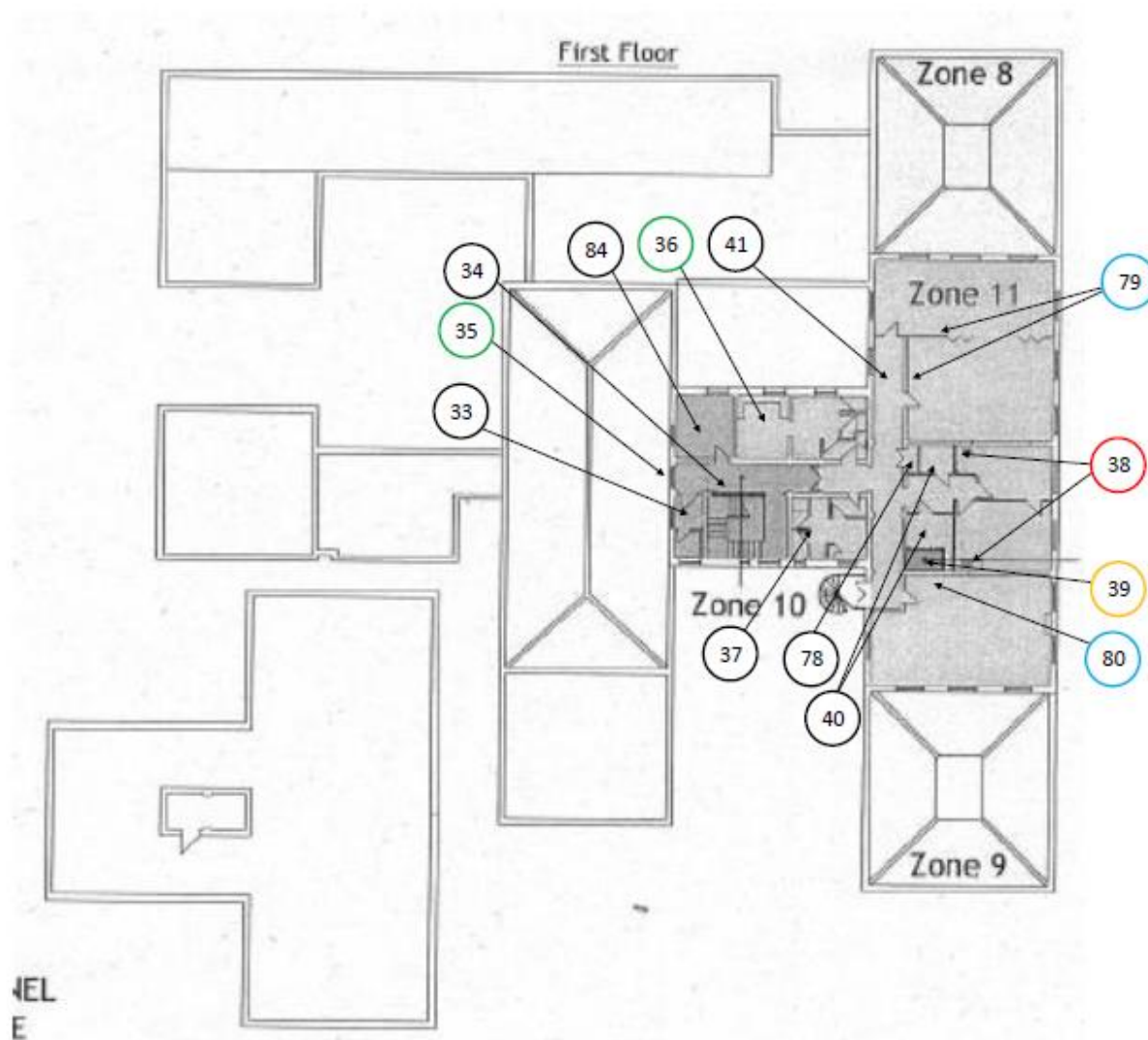
## Section 12: Site Plan








KEY	
	Visual Inspection
	ACM's Detected (Positive Items)
	No ACM's Detected (Negative Items)
	Presumed to Contain ACM's
	No Access

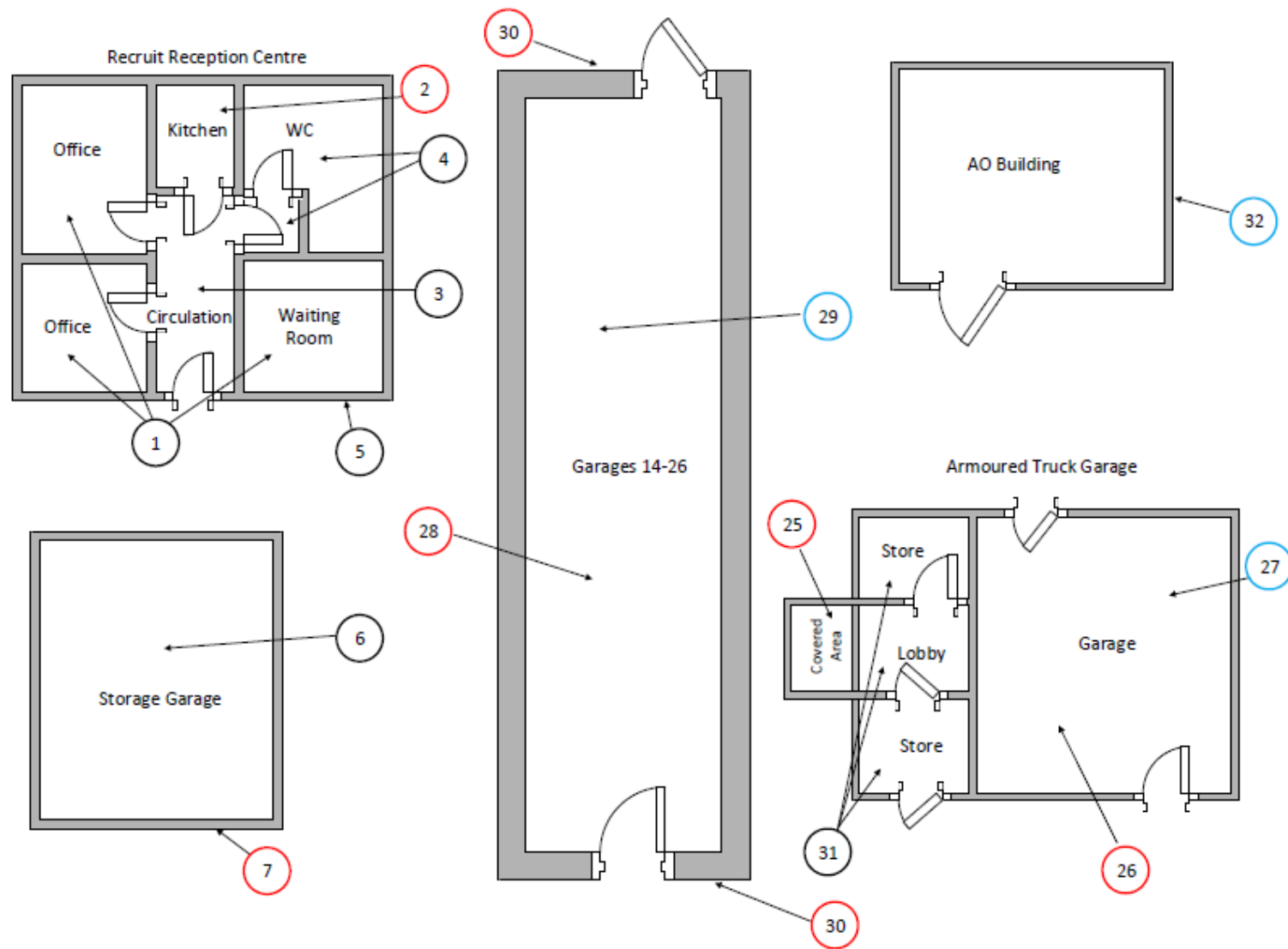
Document Name	Author	Issued by	Revision Number	Issue Date	Page No
2019	Emma Humphreys	Armour AS	0	14/08/2019	101





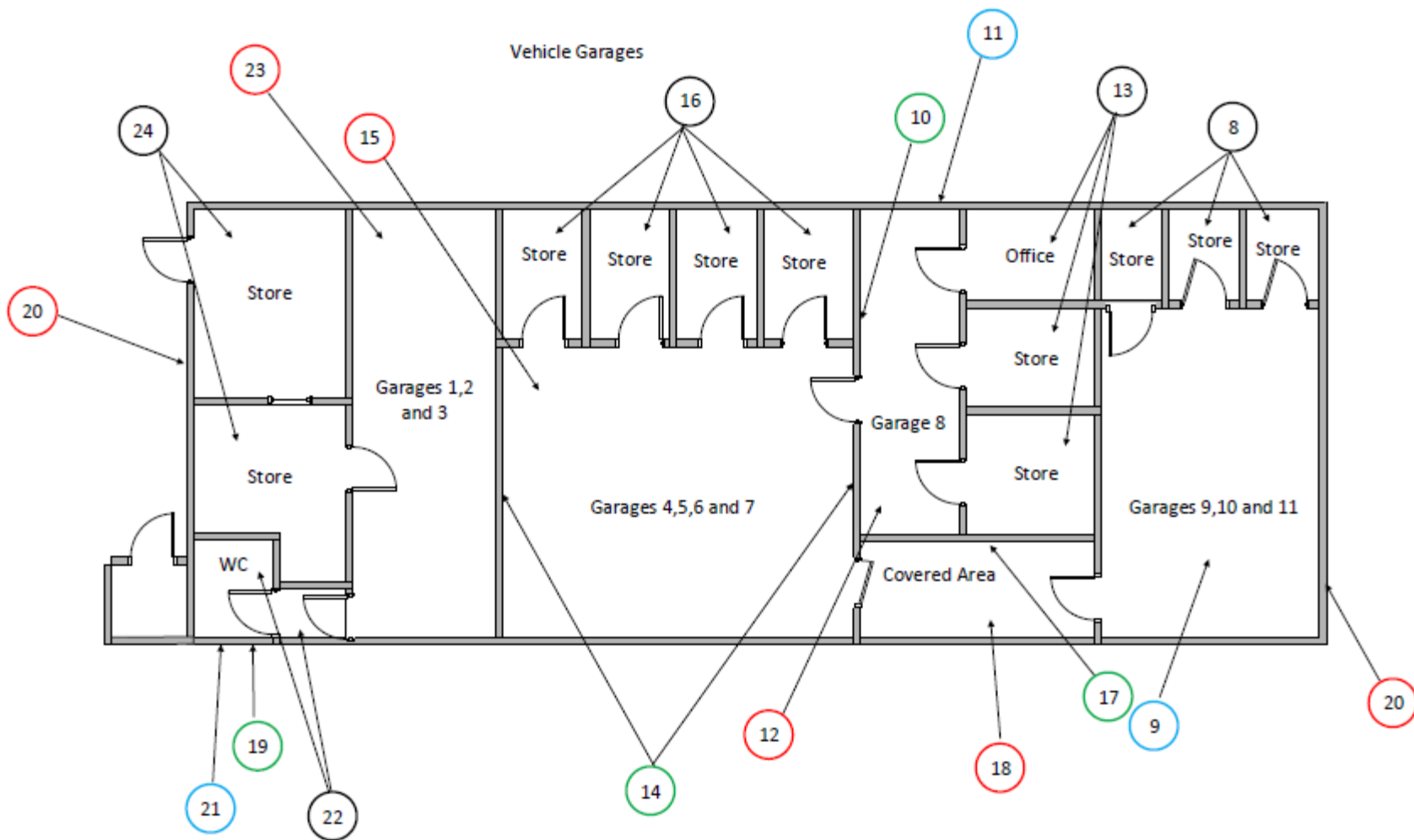
KEY	
	Visual Inspection
	ACM's Detected (Positive Items)
	No ACM's Detected (Negative Items)
	Presumed to Contain ACM's
	No Access






Document Name	Author	Issued by	Revision Number	Issue Date	Page No
2019	Emma Humphreys	Armour AS	0	14/08/2019	102



KEY	
	Visual Inspection
	ACM's Detected (Positive Items)
	No ACM's Detected (Negative Items)
	Presumed to Contain ACM's
	No Access

Document Name	Author	Issued by	Revision Number	Issue Date	Page No
2019	Emma Humphreys	Armour AS	0	14/08/2019	103



KEY	
	Visual Inspection
	ACM's Detected (Positive Items)
	No ACM's Detected (Negative Items)
	Presumed to Contain ACM's
	No Access

Document Name	Author	Issued by	Revision Number	Issue Date	Page No
2019	Emma Humphreys	Armour AS	0	14/08/2019	104



**ARMOUR**  
ANALYTICAL SERVICES

**I the surveyor can confirm that this report is accurate to my findings onsite and this survey has been Content checked by myself.**

**Checked by: David Kelly**

**Date: 13/08/2019**

**I the Admin Manager can confirm that this report is accurate to the paperwork received and this survey has been quality checked by myself.**

**Checked by: Emma Humphreys**

**Date: 13.08.2019**

**Report Compiled By**

**Armour Analytical Services Ltd, Admirals Yard, Station Road, Bristol, BS34 6LR**

Document Name	Author	Issued by	Revision Number	Issue Date	Page No
2019	Emma Humphreys	Armour AS	0	14/08/2019	105