



ARMOUR
ANALYTICAL SERVICES

Project Number 2481

**Management
Asbestos Survey Report**

**Wyvern Barracks, Barrack Road, Exeter, Devon,
EX2 6AE (Building 3)**



Working in Partnership with Shield Environmental Services



Document Name	Author	Issued by	Revision Number	Issue Date	Page No
2019	Emma Humphreys	Armour AS	0	03/07/2019	1

Contents

Section	
1	Contacts & Authorisation
2	Executive Summary
3	Site Description & Survey Information
4	Positive and Presumed Photos Sheets
5	Negative Photos Sheets
6	Survey Objectives
7	Survey Techniques
8	Survey Caveat
9	Survey Notes
10	Material Assessment Algorithm
11	Certificates of Bulk Analysis
12	Site Plan

Document Name	Author	Issued by	Revision Number	Issue Date	Page No
2019	Emma Humphreys	Armour AS	0	03/07/2019	2



Section 1: Contact Details

Client Details:		Instructing Party:	
Wessex RFCA Mount House Mount Street Taunton TA1 3QE		Shield Environmental Shield House Caxton Business Park Crown Way Bristol BS30 8XJ	
Contact Name:	Sue Morrell	Contact Name:	Chloe Smith
Tel: 01823250115	Fax: N/A	Tel: 01173012650	Fax: N/A

Site Address:		Report Author:	
Wyvern Barracks Barrack Road Exeter Devon EX2 6AE (Building 3)		Armour Analytical Services Admirals Yard Station Road Bristol BS34 6LR	
Contact Name:	Andy Palmer	Contact Name:	David Kelly
Tel: 07775560719	Fax: N/A	Mobile: 07769707519	

Lead Surveyor's Name:	Lead Surveyor's Authorising Signature:
D. Kelly	

Document Name	Author	Issued by	Revision Number	Issue Date	Page No
2019	Emma Humphreys	Armour AS	0	03/07/2019	3

Section 2: Executive Summary

Sample Number	Sample Type	Location	Analysis
1	Gaskets	Lobby Ground Floor	Chrysotile
2	Gaskets	Boiler Room	Chrysotile
3	Panels under bar	Messing Room/Bar	N.A.D.I.S
4	Insulation Board Boxing	Female WC – Ground Floor	N.A.D.I.S
5	Gaskets	Kitchen – First Floor	N.A.D.I.S
6	Loft Hatch Panels	Loft Spaces	N.A.D.I.S

N.A.D.I.S – No Asbestos Detected in Sample

A.D – Asbestos Detected

The following items have been Presumed to be Asbestos Containing Materials as they were not accessible at the time of the survey:

Item 7 – Male WC x 2 and Female WC x 1 – Toilet Seat – Unable to sample as would damage integrity of the seat

Item 12 – Electricity Cupboard – Flashguards within electrical box– Unable to sample as live

Item 20 – Male WC - Toilet Seat – Unable to sample as would damage integrity of the seat

Item 24 – Kitchen WC - Toilet Seat – Unable to sample as would damage integrity of the seat

Item 37 – Office- Safe Casing – No access within safe casings without irreparable damage

The presence of asbestos in these areas cannot be ascertained at this time. If any works are to be carried out in these areas in the future, then these works should be approached cautiously.

In accordance with current legislation, any suspect materials encountered in these areas are to be assumed to contain asbestos until proven otherwise. This will normally involve cessation of works in the affected area.

Document Name	Author	Issued by	Revision Number	Issue Date	Page No
2019	Emma Humphreys	Armour AS	0	03/07/2019	4

Section 3: Site Description & Survey Information

Brief description on the general building construction

Brick and Block construction with a pitched tiled roof.

Caveat for no access areas

No access with the safe casings.

No access within the live electrics.

Not possible to sample the toilet seats as it would damage the integrity of the seat.

EXTERNAL MATERIALS

Roof Type	Pitched
Roof Materials	Ceramic Tiles
Soffits	Timber
Fascia	Timber
Walls	Brick
Verge Under cloaking	N/A
Guttering	Metal
Downpipes	Metal
Window/Door frames	UPVC Windows and UPVC Panels under windows
Other Materials	N/A

INTERNAL MATERIALS

Loft Insulation	Fiberglass
Roof Underlining	Modern Roof Felt
Ceilings	Plasterboard, Concrete
Walls <i>Internal</i>	Plasterboard, Brick
Floors	Carpet, Screed, Lino
Doors/Frames	Timber
Pipework/Insulation	MMMF, Metal, Plastic
Boxings	Timber
Boiler Make	Modern
Flue Pipes	Metal
Storage Heaters	N/A
Electrical Boxes/Machinery	No Access within live electrics
Ducting/Risers	N/A
Stairs	Screed
Lift Shafts	N/A
Other Materials	N/A

Document Name	Author	Issued by	Revision Number	Issue Date	Page No
2019	Emma Humphreys	Armour AS	0	03/07/2019	5



Section 4: Positive and Presumed Photos Sheets

Item No: 7

Sample No: N/A

Location: Male WC's x 2 and Female WC x 1



Material Description:	Reinforced plastic toilet seats	
Identification:	Presumed to Contain Asbestos	
Approx. quantity:	X2	
Accessibility	High	<i>Assessment Score</i>
Product type:	Composite	1
Extent of Damage:	Good	0
Surface Treatment:	Non-Friable	0
Asbestos type:	Chrysotile	1
Material Assessment Score:		2
Priority Assessment Score:		Negligible
Action:	Manage	
Comments:	Located in both male toilets, the seat in the female WC has been replaced. No access to sample as it would damage the integrity of the seats	

Document Name	Author	Issued by	Revision Number	Issue Date	Page No
2019	Emma Humphreys	Armour AS	0	03/07/2019	6

**Item No: 11****Sample No: 1****Location: Lobby – Ground Floor**

Material Description:	Gaskets	
Identification:	Sampled – Asbestos Detected	
Approx. quantity:	X 2	
Accessibility	Low	<i>Assessment Score</i>
Product type:	Textiles	2
Extent of Damage:	Minor	1
Surface Treatment:	Unsealed	1
Asbestos type:	Chrysotile	1
Material Assessment Score:		5
Priority Assessment Score:		Low
Action:	Manage	
Comments:	N/A	

Document Name	Author	Issued by	Revision Number	Issue Date	Page No
2019	Emma Humphreys	Armour AS	0	03/07/2019	7

**Item No: 12****Sample No: N/A****Location: Electricity Cupboard**

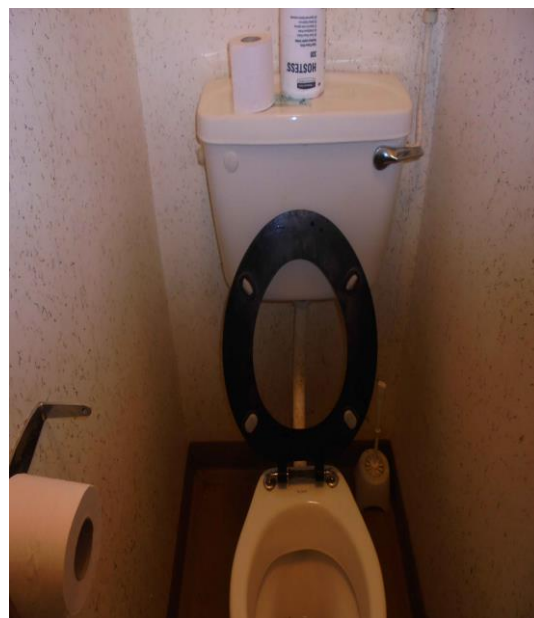
Material Description:	Flashguards within isolator panels	
Identification:	Presumed to Contain Asbestos	
Approx. quantity:	X 3 Boxes	
Accessibility	Low	<i>Assessment Score</i>
Product type:	No Access	2
Extent of Damage:	No Access	1
Surface Treatment:	No Access	1
Asbestos type:	No Access	1
Material Assessment Score:		5
Priority Assessment Score:		Low
Action:	Manage	
Comments:	No access within panels as live	

Document Name	Author	Issued by	Revision Number	Issue Date	Page No
2019	Emma Humphreys	Armour AS	0	03/07/2019	8

**Item No: 13****Sample No: 2****Location: Boiler Room**

Material Description:	Gaskets	
Identification:	Sampled – Asbestos Detected	
Approx. quantity:	X 50 Gaskets (Approximately)	
Accessibility	Low	Assessment Score
Product type:	Textiles	2
Extent of Damage:	Minor	1
Surface Treatment:	Unsealed	1
Asbestos type:	Chrysotile	1
Material Assessment Score:		5
Priority Assessment Score:		Low
Action:	Manage	
Comments:	Non-asbestos boiler and water heater	

Document Name	Author	Issued by	Revision Number	Issue Date	Page No
2019	Emma Humphreys	Armour AS	0	03/07/2019	9

**Item No: 20****Sample No: N/A****Location: Male WC – Ground Floor**

Material Description:	Reinforced plastic toilet seat	
Identification:	Presumed to Contain Asbestos	
Approx. quantity:	X 1 Seat	
Accessibility	High	<i>Assessment Score</i>
Product type:	Composite	1
Extent of Damage:	Good	0
Surface Treatment:	Non-Friable	0
Asbestos type:	Chrysotile	1
Material Assessment Score:		2
Priority Assessment Score:		Negligible
Action:	Manage	
Comments:	Unable to sample as would damage the integrity of the seat	

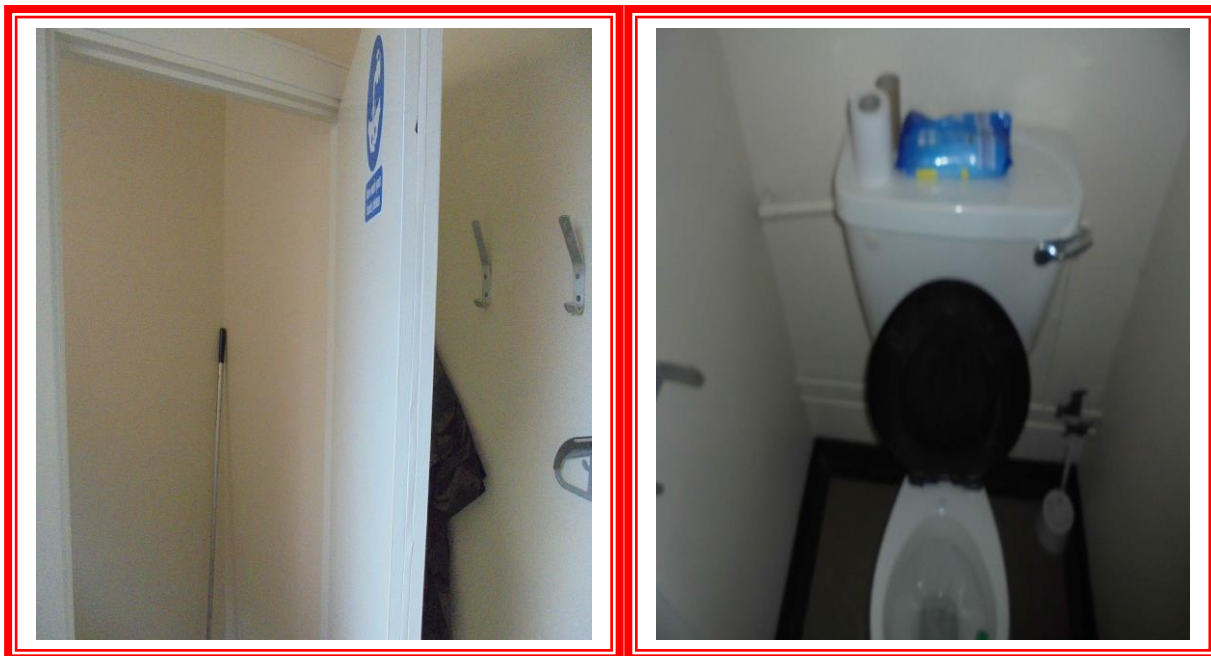
Document Name	Author	Issued by	Revision Number	Issue Date	Page No
2019	Emma Humphreys	Armour AS	0	03/07/2019	10



Item No: 24

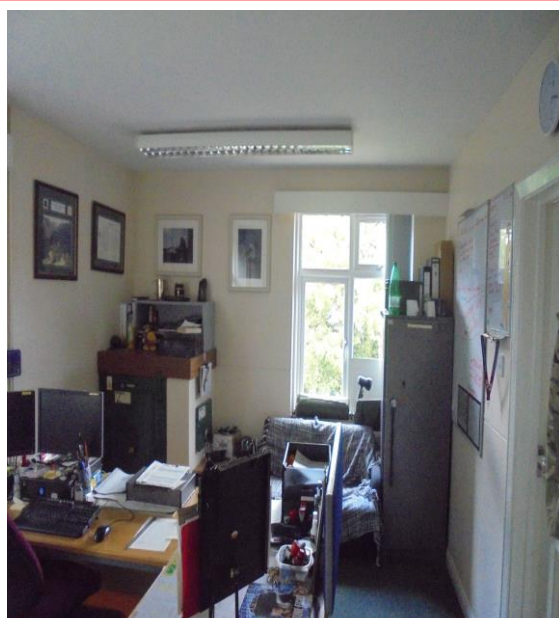
Sample No: N/A

Location: Kitchen WC – Ground Floor



Material Description:	Reinforced plastic toilet seat	
Identification:	Presumed to Contain Asbestos	
Approx. quantity:	X 1 Seat	
Accessibility	High	<i>Assessment Score</i>
Product type:	Composite	1
Extent of Damage:	Good	0
Surface Treatment:	Non-Friable	0
Asbestos type:	Chrysotile	1
Material Assessment Score:		2
Priority Assessment Score:		Negligible
Action:	Manage	
Comments:	Unable to sample as would damage the integrity of the seat	

Document Name	Author	Issued by	Revision Number	Issue Date	Page No
2019	Emma Humphreys	Armour AS	0	03/07/2019	11

**Item No: 37****Sample No: N/A****Location: Office – First Floor**

Material Description:	No access within safe casings	
Identification:	Presumed to Contain Asbestos	
Approx. quantity:	X 1 Safe	
Accessibility	Low	<i>Assessment Score</i>
Product type:	No Access	2
Extent of Damage:	No Access	2
Surface Treatment:	No Access	2
Asbestos type:	No Access	2
Material Assessment Score:		8
Priority Assessment Score:		Medium
Action:	Manage	
Comments:	No access within safe casings without irreparable damage	

Document Name	Author	Issued by	Revision Number	Issue Date	Page No
2019	Emma Humphreys	Armour AS	0	03/07/2019	12



Section 5: Negative Photos Sheets

Item No: 1

Sample No: N/A

Location: Lecture Rooms 1,2 and 3 – Ground Floor



Material Description:	Visual Inspection – No Suspect Materials Found	
Identification:	N/A	
Approx. quantity:	N/A	
Accessibility	N/A	<i>Assessment Score</i>
Product type:		N/A
Extent of Damage:		N/A
Surface Treatment:		N/A
Asbestos type:		N/A
Material Assessment Score:		N/A
Priority Assessment Score:		N/A
Action:	N/A	
Comments:	N/A	

Document Name	Author	Issued by	Revision Number	Issue Date	Page No
2019	Emma Humphreys	Armour AS	0	03/07/2019	13



Item No: 3

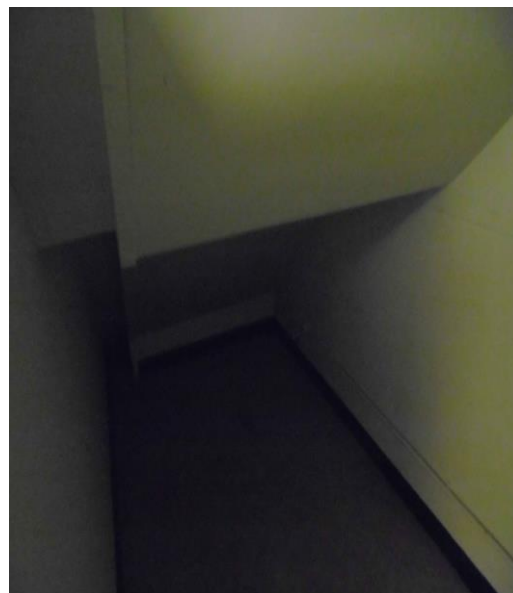
Sample No: N/A

Location: Lobby/Circulation – Ground Floor



Material Description:	Visual Inspection – No Suspect Materials Found	
Identification:	N/A	
Approx. quantity:	N/A	
Accessibility	N/A	<i>Assessment Score</i>
Product type:		N/A
Extent of Damage:		N/A
Surface Treatment:		N/A
Asbestos type:		N/A
Material Assessment Score:		N/A
Priority Assessment Score:		N/A
Action:	N/A	
Comments:	N/A	

Document Name	Author	Issued by	Revision Number	Issue Date	Page No
2019	Emma Humphreys	Armour AS	0	03/07/2019	14

**Item No: 4****Sample No: N/A****Location: Store Cupboard**

Material Description:	Visual Inspection – No Suspect Materials Found	
Identification:	N/A	
Approx. quantity:	N/A	
Accessibility	N/A	<i>Assessment Score</i>
Product type:		N/A
Extent of Damage:		N/A
Surface Treatment:		N/A
Asbestos type:		N/A
Material Assessment Score:		N/A
Priority Assessment Score:		N/A
Action:	N/A	
Comments:	N/A	

Document Name	Author	Issued by	Revision Number	Issue Date	Page No
2019	Emma Humphreys	Armour AS	0	03/07/2019	15



Item No: 5

Sample No: N/A

Location: Clothes Stores x 2 and Office



Material Description:	Visual Inspection – No Suspect Materials Found	
Identification:	N/A	
Approx. quantity:	N/A	
Accessibility	N/A	<i>Assessment Score</i>
Product type:		N/A
Extent of Damage:		N/A
Surface Treatment:		N/A
Asbestos type:		N/A
Material Assessment Score:		N/A
Priority Assessment Score:		N/A
Action:	N/A	
Comments:	N/A	

Document Name	Author	Issued by	Revision Number	Issue Date	Page No
2019	Emma Humphreys	Armour AS	0	03/07/2019	16



Item No: 6

Sample No: N/A

Location: Webbing Store, Cupboard and Drying Room



Material Description:	Visual Inspection – No Suspect Materials Found	
Identification:	N/A	
Approx. quantity:	N/A	
Accessibility	N/A	<i>Assessment Score</i>
Product type:		N/A
Extent of Damage:		N/A
Surface Treatment:		N/A
Asbestos type:		N/A
Material Assessment Score:		N/A
Priority Assessment Score:		N/A
Action:	N/A	
Comments:	N/A	

Document Name	Author	Issued by	Revision Number	Issue Date	Page No
2019	Emma Humphreys	Armour AS	0	03/07/2019	17

**Item No: 7****Sample No: N/A****Location: Store and Boiler Room**

Material Description:	Visual Inspection – No Suspect Materials Found	
Identification:	N/A	
Approx. quantity:	N/A	
Accessibility	N/A	<i>Assessment Score</i>
Product type:		N/A
Extent of Damage:		N/A
Surface Treatment:		N/A
Asbestos type:		N/A
Material Assessment Score:		N/A
Priority Assessment Score:		N/A
Action:	N/A	
Comments:	Modern Boiler and Pipework	

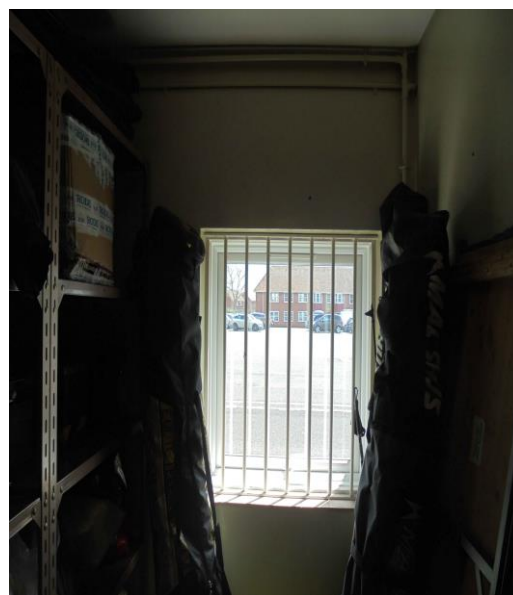
Document Name	Author	Issued by	Revision Number	Issue Date	Page No
2019	Emma Humphreys	Armour AS	0	03/07/2019	18



Item No: 8

Sample No: N/A

Location: Stores x 3



Material Description:	Visual Inspection – No Suspect Materials Found	
Identification:	N/A	
Approx. quantity:	N/A	
Accessibility	N/A	<i>Assessment Score</i>
Product type:		N/A
Extent of Damage:		N/A
Surface Treatment:		N/A
Asbestos type:		N/A
Material Assessment Score:		N/A
Priority Assessment Score:		N/A
Action:	N/A	
Comments:	Limited access into stores due to stored items and cabinets	

Document Name	Author	Issued by	Revision Number	Issue Date	Page No
2019	Emma Humphreys	Armour AS	0	03/07/2019	19

**Item No: 9****Sample No: N/A****Location: Cutlery Store – Ground Floor**

Material Description:	Visual Inspection – No Suspect Materials Found	
Identification:	N/A	
Approx. quantity:	N/A	
Accessibility	N/A	<i>Assessment Score</i>
Product type:		N/A
Extent of Damage:		N/A
Surface Treatment:		N/A
Asbestos type:		N/A
Material Assessment Score:		N/A
Priority Assessment Score:		N/A
Action:	N/A	
Comments:	Non-asbestos lino under carpet	

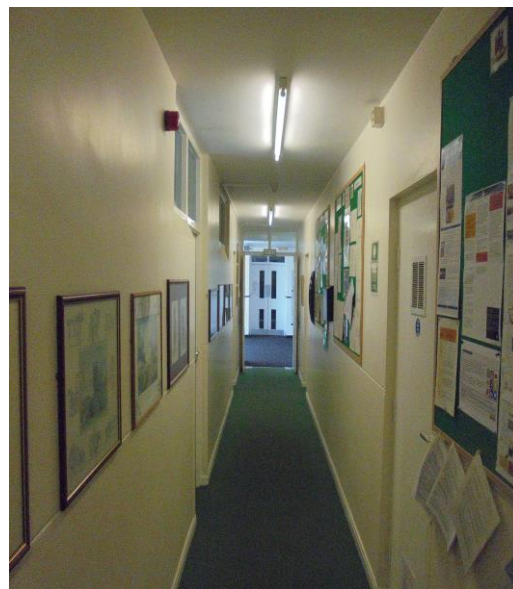
Document Name	Author	Issued by	Revision Number	Issue Date	Page No
2019	Emma Humphreys	Armour AS	0	03/07/2019	20



Item No: 10

Sample No: N/A

Location: Corridor – Ground Floor



Material Description:	Visual Inspection – No Suspect Materials Found	
Identification:	N/A	
Approx. quantity:	N/A	
Accessibility	N/A	<i>Assessment Score</i>
Product type:		N/A
Extent of Damage:		N/A
Surface Treatment:		N/A
Asbestos type:		N/A
Material Assessment Score:		N/A
Priority Assessment Score:		N/A
Action:	N/A	
Comments:	N/A	

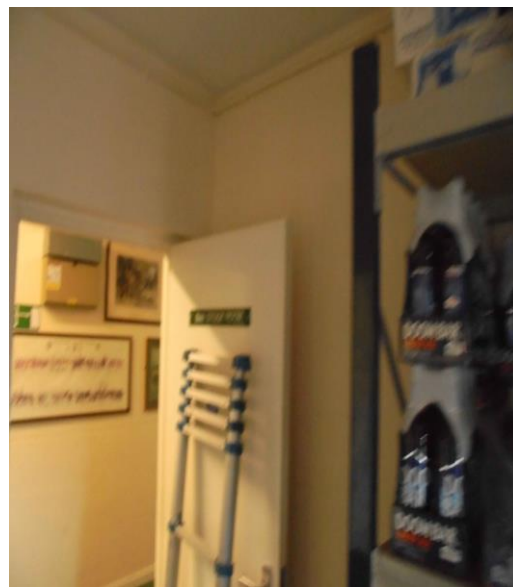
Document Name	Author	Issued by	Revision Number	Issue Date	Page No
2019	Emma Humphreys	Armour AS	0	03/07/2019	21



Item No: 14

Sample No: N/A

Location: Store, Servery and Bar – Ground Floor



Material Description:	Visual Inspection – No Suspect Materials Found	
Identification:	N/A	
Approx. quantity:	N/A	
Accessibility	N/A	<i>Assessment Score</i>
Product type:		N/A
Extent of Damage:		N/A
Surface Treatment:		N/A
Asbestos type:		N/A
Material Assessment Score:		N/A
Priority Assessment Score:		N/A
Action:	N/A	
Comments:	Modern sink pad	

Document Name	Author	Issued by	Revision Number	Issue Date	Page No
2019	Emma Humphreys	Armour AS	0	03/07/2019	22

**Item No: 15****Sample No: 3****Location: Messing Room/Bar**

Material Description:	Panels under bar	
Identification:	Sampled – No Asbestos Detected	
Approx. quantity:	3M2	
Accessibility	N/A	<i>Assessment Score</i>
Product type:		N/A
Extent of Damage:		N/A
Surface Treatment:		N/A
Asbestos type:		N/A
Material Assessment Score:		N/A
Priority Assessment Score:		N/A
Action:	N/A	
Comments:	No access under fixed carpet. No access within timber boxings	

Document Name	Author	Issued by	Revision Number	Issue Date	Page No
2019	Emma Humphreys	Armour AS	0	03/07/2019	23



Item No: 16

Sample No: N/A

Location: Washroom



Material Description:	Visual Inspection – No Suspect Materials Found	
Identification:	N/A	
Approx. quantity:	N/A	
Accessibility	N/A	<i>Assessment Score</i>
Product type:		N/A
Extent of Damage:		N/A
Surface Treatment:		N/A
Asbestos type:		N/A
Material Assessment Score:		N/A
Priority Assessment Score:		N/A
Action:	N/A	
Comments:	N/A	

Document Name	Author	Issued by	Revision Number	Issue Date	Page No
2019	Emma Humphreys	Armour AS	0	03/07/2019	24



Item No: 17

Sample No: N/A

Location: Cupboard



Material Description:	Visual Inspection – No Suspect Materials Found	
Identification:	N/A	
Approx. quantity:	N/A	
Accessibility	N/A	<i>Assessment Score</i>
Product type:		N/A
Extent of Damage:		N/A
Surface Treatment:		N/A
Asbestos type:		N/A
Material Assessment Score:		N/A
Priority Assessment Score:		N/A
Action:	N/A	
Comments:	Limited access into store due to stored items	

Document Name	Author	Issued by	Revision Number	Issue Date	Page No
2019	Emma Humphreys	Armour AS	0	03/07/2019	25



Item No: 18

Sample No: N/A

Location: Store



Material Description:	Visual Inspection – No Suspect Materials Found	
Identification:	N/A	
Approx. quantity:	N/A	
Accessibility	N/A	<i>Assessment Score</i>
Product type:		N/A
Extent of Damage:		N/A
Surface Treatment:		N/A
Asbestos type:		N/A
Material Assessment Score:		N/A
Priority Assessment Score:		N/A
Action:	N/A	
Comments:	N/A	

Document Name	Author	Issued by	Revision Number	Issue Date	Page No
2019	Emma Humphreys	Armour AS	0	03/07/2019	26



Item No: 19

Sample No: 4

Location: Female WC – Ground Floor



Material Description:	Insulation board boxing	
Identification:	Sampled – No Asbestos Detected	
Approx. quantity:	6LM	
Accessibility	N/A	<i>Assessment Score</i>
Product type:		N/A
Extent of Damage:		N/A
Surface Treatment:		N/A
Asbestos type:		N/A
Material Assessment Score:		N/A
Priority Assessment Score:		N/A
Action:	N/A	
Comments:	No access within boxing	

Document Name	Author	Issued by	Revision Number	Issue Date	Page No
2019	Emma Humphreys	Armour AS	0	03/07/2019	27



Item No: 21

Sample No: N/A

Location: Corridor – Ground Floor



Material Description:	Visual Inspection – No Suspect Materials Found	
Identification:	N/A	
Approx. quantity:	N/A	
Accessibility	N/A	<i>Assessment Score</i>
Product type:		N/A
Extent of Damage:		N/A
Surface Treatment:		N/A
Asbestos type:		N/A
Material Assessment Score:		N/A
Priority Assessment Score:		N/A
Action:	N/A	
Comments:	N/A	

Document Name	Author	Issued by	Revision Number	Issue Date	Page No
2019	Emma Humphreys	Armour AS	0	03/07/2019	28

**Item No: 22****Sample No: N/A****Location: Dining Room – Ground Floor**

Material Description:	Visual Inspection – No Suspect Materials Found	
Identification:	N/A	
Approx. quantity:	N/A	
Accessibility	N/A	<i>Assessment Score</i>
Product type:		N/A
Extent of Damage:		N/A
Surface Treatment:		N/A
Asbestos type:		N/A
Material Assessment Score:		N/A
Priority Assessment Score:		N/A
Action:	N/A	
Comments:	No access within plasterboard or timber boxing. No access under the fixed carpet	

Document Name	Author	Issued by	Revision Number	Issue Date	Page No
2019	Emma Humphreys	Armour AS	0	03/07/2019	29

**Item No: 23****Sample No: N/A****Location: Kitchen – Ground Floor**

Material Description:	Visual Inspection – No Suspect Materials Found	
Identification:	N/A	
Approx. quantity:	N/A	
Accessibility	N/A	<i>Assessment Score</i>
Product type:		N/A
Extent of Damage:		N/A
Surface Treatment:		N/A
Asbestos type:		N/A
Material Assessment Score:		N/A
Priority Assessment Score:		N/A
Action:	N/A	
Comments:	Modern Sink Pad	

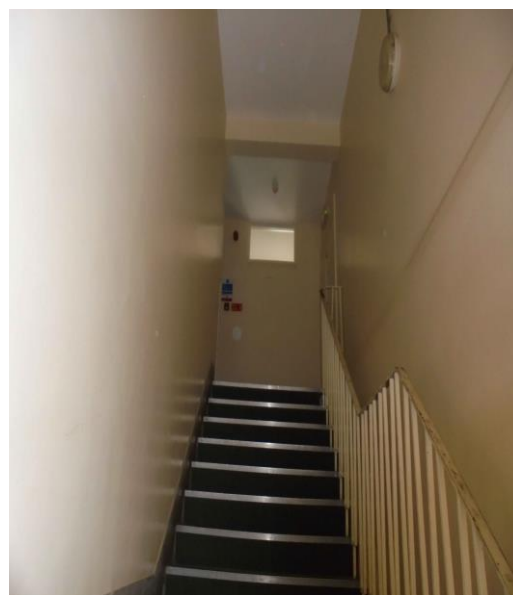
Document Name	Author	Issued by	Revision Number	Issue Date	Page No
2019	Emma Humphreys	Armour AS	0	03/07/2019	30



Item No: 25

Sample No: N/A

Location: Lobby, Stairwell and Landing



Material Description:	Visual Inspection – No Suspect Materials Found	
Identification:	N/A	
Approx. quantity:	N/A	
Accessibility	N/A	<i>Assessment Score</i>
Product type:		N/A
Extent of Damage:		N/A
Surface Treatment:		N/A
Asbestos type:		N/A
Material Assessment Score:		N/A
Priority Assessment Score:		N/A
Action:	N/A	
Comments:	Modern Stair Nosing	

Document Name	Author	Issued by	Revision Number	Issue Date	Page No
2019	Emma Humphreys	Armour AS	0	03/07/2019	31

**Item No: 26****Sample No: N/A****Location: Lecture Room 2 and 3 – First Floor**

Material Description:	Visual Inspection – No Suspect Materials Found	
Identification:	N/A	
Approx. quantity:	N/A	
Accessibility	N/A	<i>Assessment Score</i>
Product type:		N/A
Extent of Damage:		N/A
Surface Treatment:		N/A
Asbestos type:		N/A
Material Assessment Score:		N/A
Priority Assessment Score:		N/A
Action:	N/A	
Comments:	N/A	

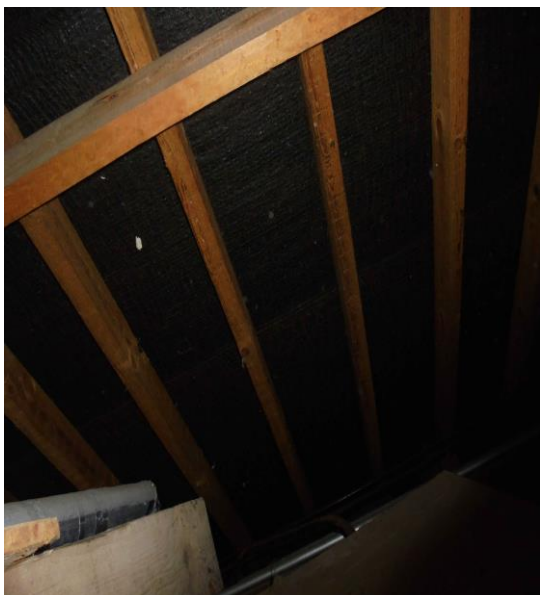
Document Name	Author	Issued by	Revision Number	Issue Date	Page No
2019	Emma Humphreys	Armour AS	0	03/07/2019	32



Item No: 27

Sample No: N/A

Location: Loft Space



Material Description:	Visual Inspection – No Suspect Materials Found	
Identification:	N/A	
Approx. quantity:	N/A	
Accessibility	N/A	<i>Assessment Score</i>
Product type:		N/A
Extent of Damage:		N/A
Surface Treatment:		N/A
Asbestos type:		N/A
Material Assessment Score:		N/A
Priority Assessment Score:		N/A
Action:	N/A	
Comments:	Limited access within loft space as no crawl boards were available	

Document Name	Author	Issued by	Revision Number	Issue Date	Page No
2019	Emma Humphreys	Armour AS	0	03/07/2019	33

**Item No: 28****Sample No: N/A****Location: Cinema/ Lecture Room and Cupboards x 2**

Material Description:	Visual Inspection – No Suspect Materials Found	
Identification:	N/A	
Approx. quantity:	N/A	
Accessibility	N/A	<i>Assessment Score</i>
Product type:		N/A
Extent of Damage:		N/A
Surface Treatment:		N/A
Asbestos type:		N/A
Material Assessment Score:		N/A
Priority Assessment Score:		N/A
Action:	N/A	
Comments:	N/A	

Document Name	Author	Issued by	Revision Number	Issue Date	Page No
2019	Emma Humphreys	Armour AS	0	03/07/2019	34



Item No: 29

Sample No: N/A

Location: Cupboard, Drying Room and Female Changing Rooms – First Floor



Material Description:	Visual Inspection – No Suspect Materials Found	
Identification:	N/A	
Approx. quantity:	N/A	
Accessibility	N/A	<i>Assessment Score</i>
Product type:		N/A
Extent of Damage:		N/A
Surface Treatment:		N/A
Asbestos type:		N/A
Material Assessment Score:		N/A
Priority Assessment Score:		N/A
Action:	N/A	
Comments:	No access within boxings in changing room	

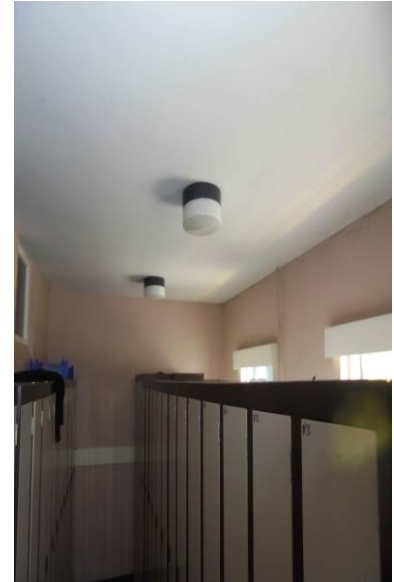
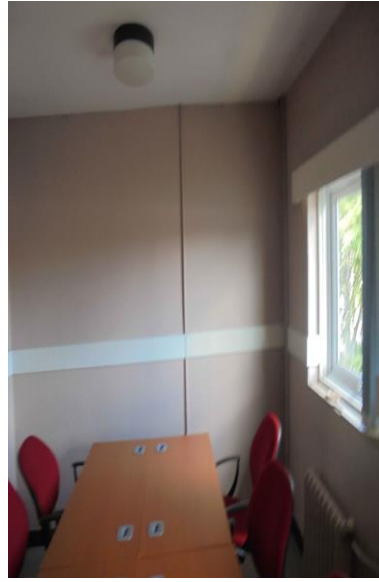
Document Name	Author	Issued by	Revision Number	Issue Date	Page No
2019	Emma Humphreys	Armour AS	0	03/07/2019	35



Item No: 30

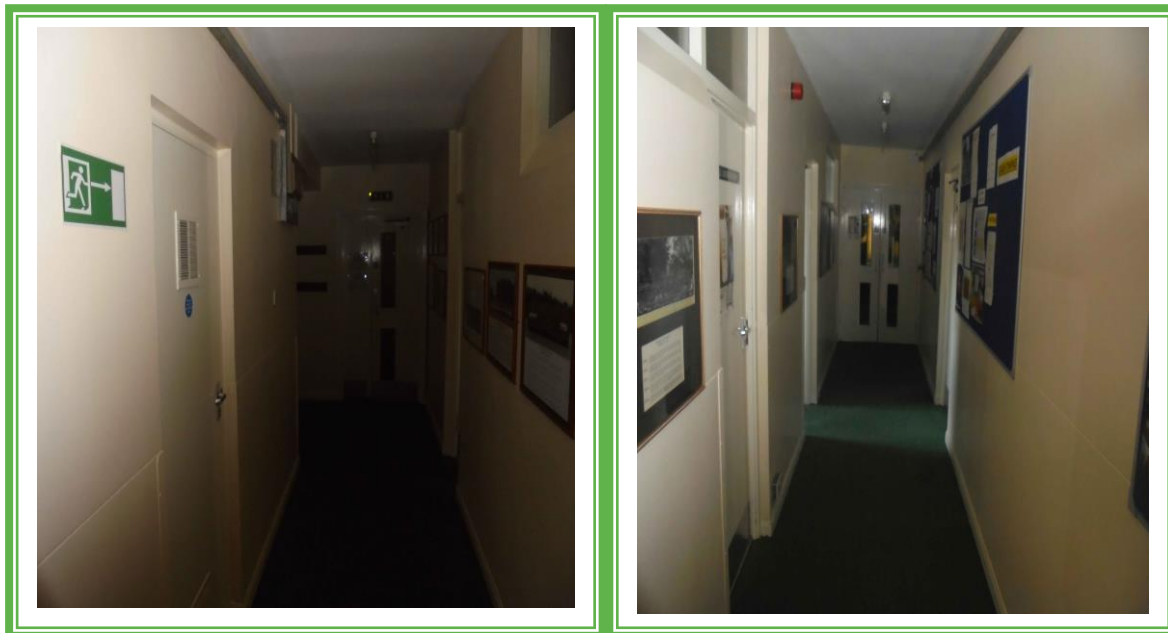
Sample No: N/A

**Location: Meeting Room, Locker Rooms and Office –
First Floor**



Material Description:	Visual Inspection – No Suspect Materials Found	
Identification:	N/A	
Approx. quantity:	N/A	
Accessibility	N/A	<i>Assessment Score</i>
Product type:		N/A
Extent of Damage:		N/A
Surface Treatment:		N/A
Asbestos type:		N/A
Material Assessment Score:		N/A
Priority Assessment Score:		N/A
Action:	N/A	
Comments:	N/A	

Document Name	Author	Issued by	Revision Number	Issue Date	Page No
2019	Emma Humphreys	Armour AS	0	03/07/2019	36

**Item No: 31****Sample No: N/A****Location: Corridor – First Floor**

Material Description:	Visual Inspection – No Suspect Materials Found	
Identification:	N/A	
Approx. quantity:	N/A	
Accessibility	N/A	<i>Assessment Score</i>
Product type:		N/A
Extent of Damage:		N/A
Surface Treatment:		N/A
Asbestos type:		N/A
Material Assessment Score:		N/A
Priority Assessment Score:		N/A
Action:	N/A	
Comments:	N/A	

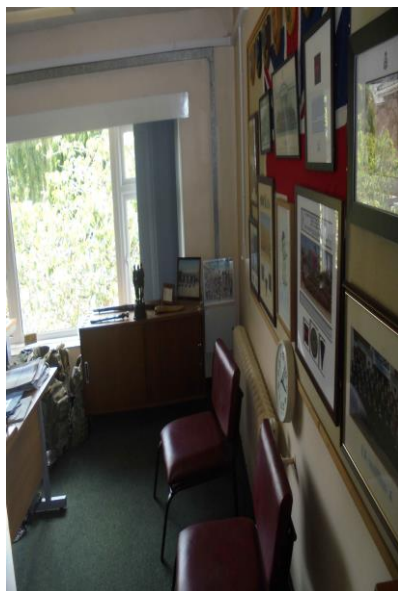
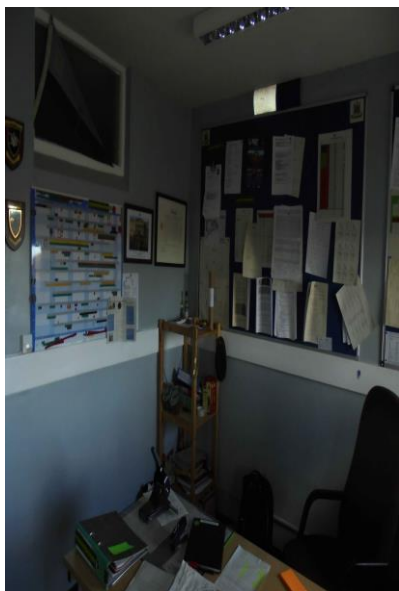
Document Name	Author	Issued by	Revision Number	Issue Date	Page No
2019	Emma Humphreys	Armour AS	0	03/07/2019	37



Item No: 32

Sample No: N/A

Location: Offices x 2 and Locker room



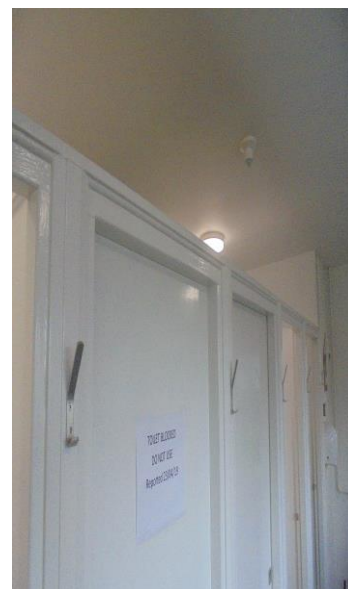
Material Description:	Visual Inspection – No Suspect Materials Found	
Identification:	N/A	
Approx. quantity:	N/A	
Accessibility	N/A	<i>Assessment Score</i>
Product type:		N/A
Extent of Damage:		N/A
Surface Treatment:		N/A
Asbestos type:		N/A
Material Assessment Score:		N/A
Priority Assessment Score:		N/A
Action:	N/A	
Comments:	No access within locked cupboards in changing rooms	

Document Name	Author	Issued by	Revision Number	Issue Date	Page No
2019	Emma Humphreys	Armour AS	0	03/07/2019	38

**Item No: 33****Sample No: N/A****Location: Locker Room – First Floor**

Material Description:	Insulation Board Boxing	
Identification:	As Per Sample 4 – No Asbestos Detected	
Approx. quantity:	8M2	
Accessibility	N/A	<i>Assessment Score</i>
Product type:		N/A
Extent of Damage:		N/A
Surface Treatment:		N/A
Asbestos type:		N/A
Material Assessment Score:		N/A
Priority Assessment Score:		N/A
Action:	N/A	
Comments:	N/A	

Document Name	Author	Issued by	Revision Number	Issue Date	Page No
2019	Emma Humphreys	Armour AS	0	03/07/2019	39

**Item No: 34****Sample No: N/A****Location: Male Shower/WC's and Drying Room – First Floor**

Material Description:	Visual Inspection – No Suspect Materials Found	
Identification:	N/A	
Approx. quantity:	N/A	
Accessibility	N/A	<i>Assessment Score</i>
Product type:		N/A
Extent of Damage:		N/A
Surface Treatment:		N/A
Asbestos type:		N/A
Material Assessment Score:		N/A
Priority Assessment Score:		N/A
Action:	N/A	
Comments:	No access within timber boxings	

Document Name	Author	Issued by	Revision Number	Issue Date	Page No
2019	Emma Humphreys	Armour AS	0	03/07/2019	40

**Item No: 35****Sample No: N/A****Location: Corridor – First Floor**

Material Description:	Visual Inspection – No Suspect Materials Found	
Identification:	N/A	
Approx. quantity:	N/A	
Accessibility	N/A	<i>Assessment Score</i>
Product type:		N/A
Extent of Damage:		N/A
Surface Treatment:		N/A
Asbestos type:		N/A
Material Assessment Score:		N/A
Priority Assessment Score:		N/A
Action:	N/A	
Comments:	N/A	

Document Name	Author	Issued by	Revision Number	Issue Date	Page No
2019	Emma Humphreys	Armour AS	0	03/07/2019	41



Item No: 36

Sample No: N/A

Location: Offices x 4



Material Description:	Visual Inspection – No Suspect Materials Found	
Identification:	N/A	
Approx. quantity:	N/A	
Accessibility	N/A	<i>Assessment Score</i>
Product type:		N/A
Extent of Damage:		N/A
Surface Treatment:		N/A
Asbestos type:		N/A
Material Assessment Score:		N/A
Priority Assessment Score:		N/A
Action:	N/A	
Comments:	N/A	

Document Name	Author	Issued by	Revision Number	Issue Date	Page No
2019	Emma Humphreys	Armour AS	0	03/07/2019	42

**Item No: 38****Sample No: N/A****Location: Electrical Cupboard**

Material Description:	Insulation board boxing and ceiling	
Identification:	As Per Sample 4 – No Asbestos Detected	
Approx. quantity:	5M2	
Accessibility	N/A	<i>Assessment Score</i>
Product type:		N/A
Extent of Damage:		N/A
Surface Treatment:		N/A
Asbestos type:		N/A
Material Assessment Score:		N/A
Priority Assessment Score:		N/A
Action:	N/A	
Comments:	N/A	

Document Name	Author	Issued by	Revision Number	Issue Date	Page No
2019	Emma Humphreys	Armour AS	0	03/07/2019	43



Item No: 39

Sample No: 5

Location: Kitchen – First Floor



Material Description:	Gaskets	
Identification:	Sampled – No Asbestos Detected	
Approx. quantity:	X 2	
Accessibility	N/A	<i>Assessment Score</i>
Product type:		N/A
Extent of Damage:		N/A
Surface Treatment:		N/A
Asbestos type:		N/A
Material Assessment Score:		N/A
Priority Assessment Score:		N/A
Action:	N/A	
Comments:	Modern Imax boiler and Pipework	

Document Name	Author	Issued by	Revision Number	Issue Date	Page No
2019	Emma Humphreys	Armour AS	0	03/07/2019	44



Item No: 40

Sample No: N/A

Location: Offices x 3 and Circulation



Material Description:	Visual Inspection – No Suspect Materials Found	
Identification:	N/A	
Approx. quantity:	N/A	
Accessibility	N/A	<i>Assessment Score</i>
Product type:		N/A
Extent of Damage:		N/A
Surface Treatment:		N/A
Asbestos type:		N/A
Material Assessment Score:		N/A
Priority Assessment Score:		N/A
Action:	N/A	
Comments:	N/A	

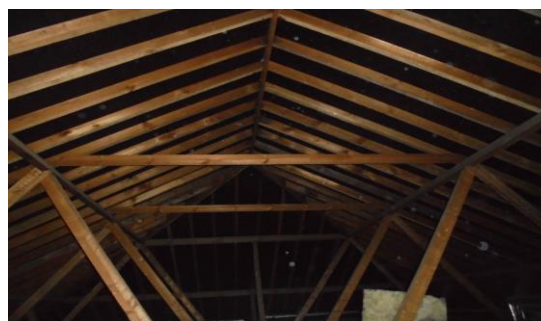
Document Name	Author	Issued by	Revision Number	Issue Date	Page No
2019	Emma Humphreys	Armour AS	0	03/07/2019	45



Item No: 41

Sample No: 6

Location: Loft Spaces



Material Description:	Loft Hatch Panels	
Identification:	Sampled – No Asbestos Detected	
Approx. quantity:	X 5 Hatches	
Accessibility	N/A	<i>Assessment Score</i>
Product type:		N/A
Extent of Damage:		N/A
Surface Treatment:		N/A
Asbestos type:		N/A
Material Assessment Score:		N/A
Priority Assessment Score:		N/A
Action:	N/A	
Comments:	Limited access within loft spaces as no crawl boards available	

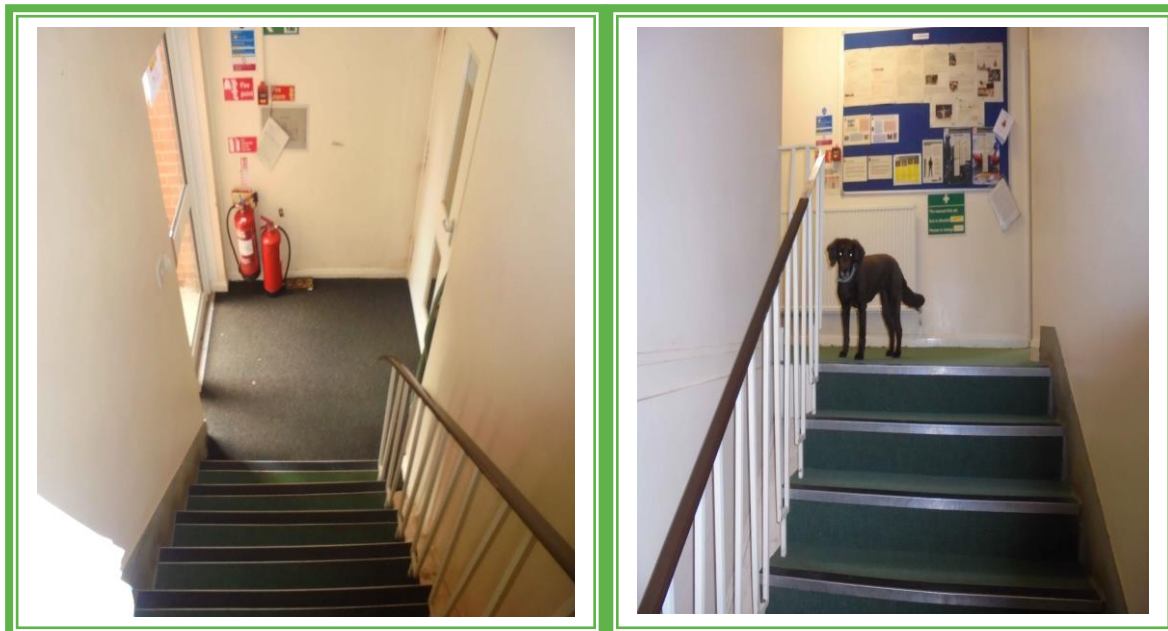
Document Name	Author	Issued by	Revision Number	Issue Date	Page No
2019	Emma Humphreys	Armour AS	0	03/07/2019	46



Item No: 42

Sample No: N/A

Location: Stairwell and Lobby



Material Description:	Visual Inspection – No Suspect Materials Found	
Identification:	N/A	
Approx. quantity:	N/A	
Accessibility	N/A	<i>Assessment Score</i>
Product type:		N/A
Extent of Damage:		N/A
Surface Treatment:		N/A
Asbestos type:		N/A
Material Assessment Score:		N/A
Priority Assessment Score:		N/A
Action:	N/A	
Comments:	N/A	

Document Name	Author	Issued by	Revision Number	Issue Date	Page No
2019	Emma Humphreys	Armour AS	0	03/07/2019	47

Section 6: Survey Objectives

Instructions were received from Sue Morrell of Wessex RFCA to carry out a Management asbestos survey at Wyvern Barracks, Barrack Road, Exeter, Devon, EX2 6AE (Building 3) in accordance with HSG264 and Armour Analytical's quality procedures.

The survey was carried out on 6th June 2019 by David Kelly with the objective of facilitating a Management report.

This Management survey is characterised as a 'Visual Inspection Sampling and Identification Survey' in HSG264. This type of survey is used to locate and describe, so far as is reasonably practicable, all asbestos containing materials (ACMs) in the building and will by its nature involve the partial destruction of the building's fabric as access is gained to all areas. A full sampling programme is undertaken to identify possible ACMs and estimate the extent of ACMs reported.

The objective of this survey report is to identify, so far as is reasonably practicable, the location, extent, product type and composition of ACMS within the building to enable the building occupants to put management and remedial procedures in place.

Document Name	Author	Issued by	Revision Number	Issue Date	Page No
2019	Emma Humphreys	Armour AS	0	03/07/2019	48

Section 7: Survey Techniques

Each floor, room and area within the scope was systematically inspected for suspect materials thought or known to contain asbestos and where such materials were encountered their location, extent, and composition were recorded.

Where materials of a similar nature exist, to those previously sampled, and a reasoned argument can be made that their composition is likely to be identical further physical sampling was not undertaken.

Photographs were taken of all sample locations, unless otherwise stated.

The analysis of suspect ACMs was undertaken by a UKAS accredited laboratory using the analytical method detailed in *HSG248, Appendix 2 -Asbestos: The analysts' guide for sampling, analysis and clearance procedures*.

Document Name	Author	Issued by	Revision Number	Issue Date	Page No
2019	Emma Humphreys	Armour AS	0	03/07/2019	49

Section 8: Survey Caveat

This report is based upon a management report inspection of an unfamiliar site. During the course of the survey all reasonable efforts were made to identify the physical presence of materials containing asbestos within the building.

A Management Survey is a non-intrusive survey, meaning that access within the fabric of the building is limited. The survey does not include access to the following areas (unless agreed beforehand with the Client and provisions are put in place):

- Within wall or ceiling construction;
- Under fixed flooring;
- Within non-openable boxings;
- Within live electrics, boilers or machinery;
- Where access/visibility is limited in an area due to stored items, furniture or services;
- Areas where there is no safe access to inspect such as floor ducts, lift shafts and loft spaces with no crawlboards;
- High level areas that are too high to safely inspect.
- Within pipework insulation throughout building as this would affect the integrity of services.

Any intrusive works carried out within the building must first be subject to a Refurbishment Asbestos Survey.

This report will be restricted to the areas that fall within the scope of works for project and will not take into account any area's that do not fall within the scope. Any asbestos that is identified within this report will need to be added to the buildings existing information and should not form the basis for a management survey. This survey will not include priority assessments nor will it include a register.

This survey considered the construction of the building, associated fixtures & fittings and associated structures and in no way should it be considered as a ground investigation report.

Services should be disconnected prior to commencement of a Management survey; however, where plant and/or electrical installations are live or appear to be live then these will not be accessed.

This survey report is not a bill of quantities.

Document Name	Author	Issued by	Revision Number	Issue Date	Page No
2019	Emma Humphreys	Armour AS	0	03/07/2019	50

Section 9: Survey Notes

This report has been written with reference to the various Guidance Notes etc, issued, and current at the date of this report and describes circumstances at the site on the date the investigation took place.

Where similar items exist in the building, only one or two samples have been taken to ascertain the material content. It was assumed that similar products were of the same material.

Any person undertaking work within the buildings should be told of the presence of asbestos. This briefing also applies to any other person associated with the site, including staff, sub-contractors and others.

The drawings in the report are not to scale and are illustrative only to indicate approximate locations. The descriptions used are for location identification purposes.

All the recommendations described in this report are based upon assumptions made after consideration of the type of material, condition of the material, its location, analysis result and type of use the area is thought to be subjected to. However, statutory authorities or others could require amendments based on local knowledge, change in legislation, change in use or indeed other conditions or criteria.

Samples taken from floor tiles (or similar material) may include a bitumen adhesive as part of the sample. It is known that some proprietary brands of bitumen have an asbestos content and this will be included as an integral part of the bulk sample unless otherwise stated.

Document Name	Author	Issued by	Revision Number	Issue Date	Page No
2019	Emma Humphreys	Armour AS	0	03/07/2019	51

Section 10: Material Assessment Algorithm

Variable	Score	Examples
Installation / Product type	1	Vinyl, 'Bakelite', Cement
	2	Asbestos insulating board, paper, rope
	3	Pipe insulation, spray coating, friable debris
Condition / damage	0	Good
	1	Slight / minor damage
	2	Moderate damage – breakage to surface treatment
	3	Major damage – smashed or exposed material
Surface treatment	0	Non-friable e.g. vinyl
	1	Enclosed insulation, encapsulated AIB
	2	Unsealed AIB, encapsulated insulation
	3	Unsealed insulation or spray coating
Asbestos type	1	Chrysotile
	2	Amosite & other amphiboles
	3	Crocidolite

The scores from each of the four sections are added together to produce a risk score:

Risk score	Risk assessment
10 or more	High risk
7 – 9	Medium risk
5 – 6	Low risk
4 & below	Negligible risk

Document Name	Author	Issued by	Revision Number	Issue Date	Page No
2019	Emma Humphreys	Armour AS	0	03/07/2019	52



Section 11: Certificates of Bulk Analysis



Our Ref: J168942 FI: 6
Your Ref: 2481
Date: 12/06/2019

ENVIROCHEM
Analytical Laboratories Ltd.
12 The Gardens
Broadcut, Fareham
Hampshire
PO16 8SS



Tel: (01329) 287777
Fax: (01329) 287755
www.envirochem.co.uk
office@envirochem.co.uk

Asbestos Fibre Identification Report

Client: Armour Analytical Services Ltd
Admirals Yard, Station Road, Patchway, Bristol, BS34 6LR
Site Address: Wyvern Barracks, Building 3, .
Sampled By: Armour Analytical Services Ltd
Date sampled/received: 11th June 2019
Date analysed: 12th June 2019
Analyst/s: Ewelina Kowalczyk Pariyar
Analysis Location: 12 The Gardens, Broadcut, Fareham, Hampshire, PO16 8SS

ANALYTICAL PROCEDURE

Fibre identification was carried out in accordance with the documented 'in-house' methods based on the HSE Guidance Note HSG 248. These employed stereo microscopy, polarized microscopy and dispersion staining techniques.

RESULTS

Sample No.	Sample Ref.	Location	Asbestos Detected	Asbestos Type
1	BS556627	Lobby ground floor - gaskets	Yes	Chrysotile
2	BS556628	Boiler Room - gaskets	Yes	Chrysotile
3	BS556629	Messing Room/Bar - Panels under bar	No	
4	BS556630	Female WC, Ground Floor - Insulation board boxing	No	

NOTES:

1. Sample(s) were examined for the presence of 6 types of asbestos fibres: crocidolite (blue), amosite (brown), chrysotile (white), anthophyllite, actinolite and tremolite.
2. Samples collected by the client are evaluated using information provided by the client. For samples collected by the client the date of receipt is deemed to be the same as the date sampled.
3. Envirochem is a UKAS accredited laboratory for sampling and identification of asbestos containing materials.
4. Comments, observations and opinions are outside the scope of UKAS accreditation.
5. The analytical method in the ISO2484 does not quantify the amount of asbestos present, therefore UKAS accreditation does not permit quantification.
6. If, during fibre identification, only 1 or 2 fibres are seen and identified as asbestos, then the term 'trace asbestos identified' is used.

SIGNATURE:

Kowalczyk

Authorised signatory

PRINT NAME: Ewelina Kowalczyk Pariyar

Reg. No. 2378228 England. Registered Office: Envirochem, 12 The Gardens, Broadcut, Fareham, Hampshire, PO16 8SS.

Page 1 of 2

Document Name	Author	Issued by	Revision Number	Issue Date	Page No
2019	Emma Humphreys	Armour AS	0	03/07/2019	53



ARMOUR
ANALYTICAL SERVICES



Our Ref: J168942 FI: 6
Your Ref: 2481
Date: 12/06/2019

ENVIROCHEM
Analytical Laboratories Ltd.
12 The Gardens
Broadcut, Fareham
Hampshire
PO16 8SS



1227
Tel: (01329) 287777
Fax: (01329) 287755
www.envirochem.co.uk
office@envirochem.co.uk

Asbestos Fibre Identification Report

Client: Armour Analytical Services Ltd
Admirals Yard, Station Road, Patchway, Bristol, BS34 6LR
Site Address: Wyvern Barracks, Building 3, .
Sampled By: Armour Analytical Services Ltd
Date sampled/received: 11th June 2019
Date analysed: 12th June 2019
Analyst/s: Ewelina Kowalczyk Pariyar
Analysis Location: 12 The Gardens, Broadcut, Fareham, Hampshire, PO16 8SS

ANALYTICAL PROCEDURE

Fibre identification was carried out in accordance with the documented 'in-house' methods based on the HSE Guidance Note HSG 248. These employed stereo microscopy, polarized microscopy and dispersion staining techniques.

RESULTS

Sample No.	Sample Ref.	Location	Asbestos Detected	Asbestos Type
5	BS556631	Kitchen first floor gaskets	No	
6	BS556632	Loft spaces - loft hatch panels	No	

NOTES:

1. Sample(s) were examined for the presence of 6 types of asbestos fibres: crocidolite (blue), amosite (brown), chrysotile (white), anthophyllite, actinolite and tremolite.
2. Samples collected by the client are evaluated using information provided by the client. For samples collected by the client the date of receipt is deemed to be the same as the date sampled.
3. Envirochem is a UKAS accredited laboratory for sampling and identification of asbestos containing materials.
4. Comments, observations and opinions are outside the scope of UKAS accreditation.
5. The analytical method in the HSG248 does not quantify the amount of asbestos present, therefore UKAS accreditation does not permit quantification.
6. If, during fibre identification, only 1 or 2 fibres are seen and identified as asbestos, then the term 'trace asbestos identified' is used.

SIGNATURE:

Kowalczyk

Authorised signatory

PRINT NAME: Ewelina Kowalczyk Pariyar

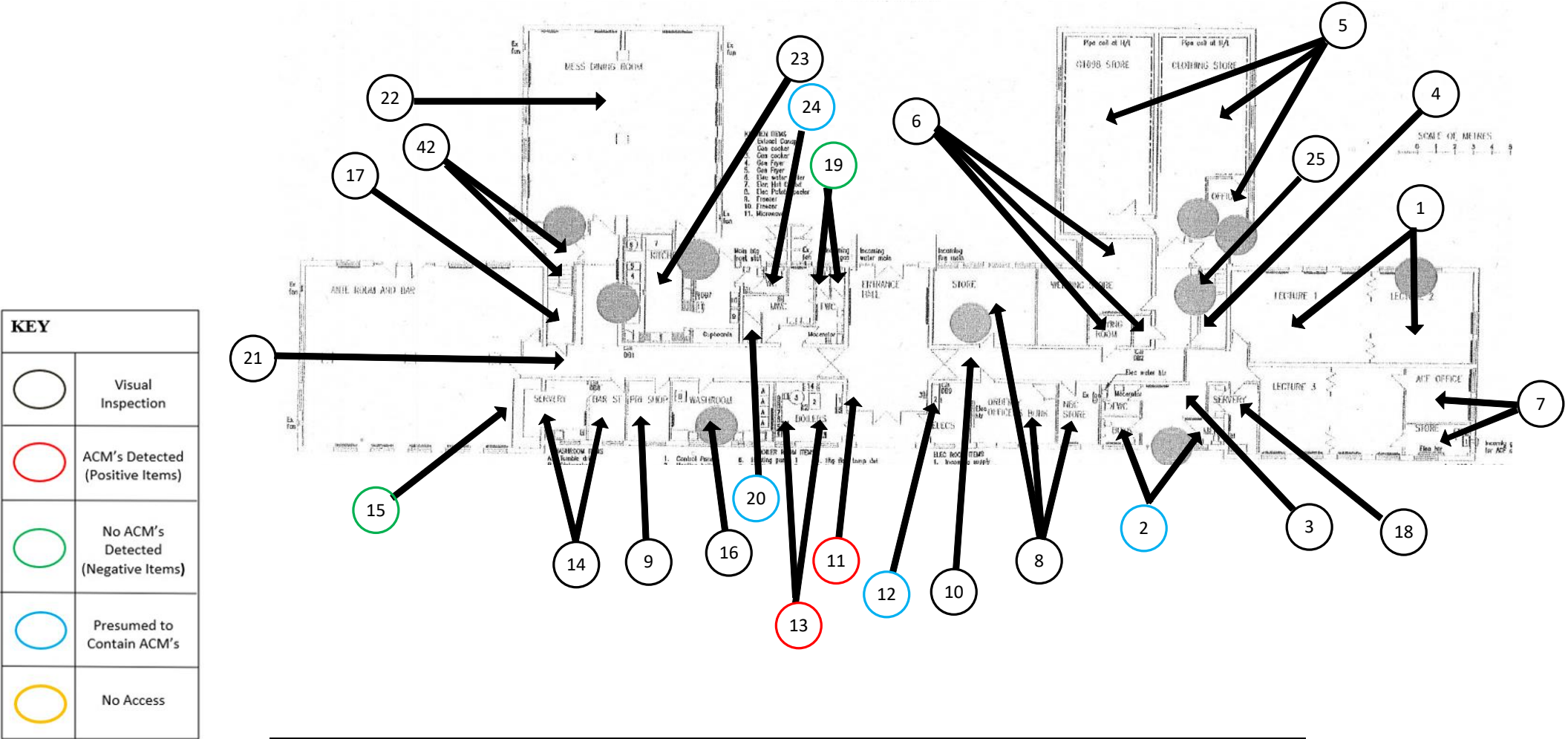
Reg. No. 2378228 England. Registered Office: Envirochem, 12 The Gardens, Broadcut, Fareham, Hampshire, PO16 8SS.

Page 2 of 2

Document Name	Author	Issued by	Revision Number	Issue Date	Page No
2019	Emma Humphreys	Armour AS	0	03/07/2019	54

Section 12: Site Plan

Ground Floor



Document Name	Author	Issued by	Revision Number	Issue Date	Page No
2019	Emma Humphreys	Armour AS	0	03/07/2019	55

I the surveyor can confirm that this report is accurate to my findings onsite and this survey has been Content checked by myself.

Checked by: David Kelly

Date: 03/07/2019

I the Admin Manager can confirm that this report is accurate to the paperwork received and this survey has been quality checked by myself.

Checked by: Emma Humphreys

Date: 02.07.2019

Report Compiled By

Armour Analytical Services Ltd, Admirals Yard, Station Road, Bristol, BS34 6LR

Document Name	Author	Issued by	Revision Number	Issue Date	Page No
2019	Emma Humphreys	Armour AS	0	03/07/2019	57