



**ARMOUR**  
ANALYTICAL SERVICES

**Project Number 2481**

**Management  
Asbestos Survey Report**

**992 Malmesbury, Wiltshire, SN16 9JR**



*Working in Partnership with Shield Services Group*

 **Shield** Celebrating  
our 40th year



Document Name	Author	Issued by	Revision Number	Issue Date	Page No
2019	Emma Humphreys	Armour AS	1	14/01/2020	1



## Contents

<b>Section</b>	
<b>1</b>	<b>Contacts &amp; Authorisation</b>
<b>2</b>	<b>Executive Summary</b>
<b>3</b>	<b>Site Description &amp; Survey Information</b>
<b>4</b>	<b>Positive and Presumed Photos Sheets</b>
<b>5</b>	<b>Negative Photos Sheets</b>
<b>6</b>	<b>Survey Objectives</b>
<b>7</b>	<b>Survey Techniques</b>
<b>8</b>	<b>Survey Caveat</b>
<b>9</b>	<b>Survey Notes</b>
<b>10</b>	<b>Material Assessment Algorithm</b>
<b>11</b>	<b>Certificates of Bulk Analysis</b>
<b>12</b>	<b>Site Plan</b>

Document Name	Author	Issued by	Revision Number	Issue Date	Page No
2019	Emma Humphreys	Armour AS	1	14/01/2020	2



## **Section 1: Contact Details**

<b>Client Details:</b>		<b>Instructing Party:</b>	
Wessex RFCA Mount House Mount Street Taunton TA1 3QE		Shield Environmental Shield House Caxton Business Park Crown Way Bristol BS30 8XJ	
<b>Contact Name:</b>	Sue Morrell	<b>Contact Name:</b>	Chloe Smith
<b>Tel:</b> 01823250115	<b>Fax:</b> N/A	<b>Tel:</b> 01173012650	<b>Fax:</b> N/A

<b>Site Address:</b>		<b>Report Author:</b>	
992 Malmesbury Wiltshire SN16 9JR		Armour Analytical Services Admirals Yard Station Road Bristol BS34 6LR	
<b>Contact Name:</b>	Nigel Alden Fenn	<b>Contact Name:</b>	Emma Humphreys
<b>Tel:</b> 07757778432	<b>Fax:</b> N/A	<b>Mobile:</b> 07468535836	

<b>Lead Surveyor's Name:</b>	<b>Lead Surveyor's Authorising Signature:</b>
D. Kelly	

Document Name	Author	Issued by	Revision Number	Issue Date	Page No
2019	Emma Humphreys	Armour AS	1	14/01/2020	3

## **Section 2: Executive Summary**

Sample Number	Sample Type	Location	Analysis
DK/1	Profiled Cement Roof	Shed	Chrysotile
DK/2	Sink Pad	Kitchen	N.A.D.I.S

N.A.D.I.S – No Asbestos Detected in Sample

A.D – Asbestos Detected

In addition to the above sampled items, the following items have been either been “Strongly Presumed” To Contain Asbestos or “Presumed” to Contain Asbestos as they were either visually identified in being so, labelled after previously being sampled on prior surveys or not accessible at the time of the survey:

Item 2 – External – Old Boiler Room – Lagging to Boiler and Pipework – Unable to sample as boiler room filled in with concrete

Item 3 – External – No access within Electrical Box – No access as live

Item 4 – External to Drill Hall – Soffit Boards – No access to sample due to the height

Item 10 – Office – Live Heater – No access to sample as live

Item 15 – Female WC – Toilet Seat – Unable to sample as it would damage the integrity

The presence of asbestos in these areas cannot be ascertained at this time. If any works are to be carried out in these areas in the future, then these works should be approached cautiously.

In accordance with current legislation, any suspect materials encountered in these areas are to be assumed to contain asbestos until proven otherwise. This will normally involve cessation of works in the affected area.

Document Name	Author	Issued by	Revision Number	Issue Date	Page No
2019	Emma Humphreys	Armour AS	1	14/01/2020	4

## **Section 3: Site Description & Survey Information**

### **Brief description on the general building construction**

Brick construction with a partially pitched tiled roof.

### **Caveat for no access areas**

No access within live electrics or heaters.

### **EXTERNAL MATERIALS**

Roof Type	Pitched, Flat
Roof Materials	Ceramic Tiles, Felt, Profiled Cement
Soffits	No Access to High Level Soffits
Fascia	Timber
Walls	Brick
Verge Under cloaking	N/A
Guttering	Metal
Downpipes	Metal
Window/Door frames	Aluminum
Other Materials	N/A

### **INTERNAL MATERIALS**

Loft Insulation	N/A
Roof Underlining	N/A
Ceilings	Plasterboard, Suspended
Walls <i>Internal</i>	Plasterboard, Brick
Floors	Carpet, Lino, Timber, Screed
Doors/Frames	Timber
Pipework/Insulation	Metal
Boxings	N/A
Boiler Make	Old Boiler Room Has Benn Filled with Concrete
Flue Pipes	N/A
Storage Heaters	No Access Within Live Heaters
Electrical Boxes/Machinery	No Access Within Live Electrics
Ducting/Risers	N/A
Stairs	N/A
Lift Shafts	N/A
Other Materials	N/A

Document Name	Author	Issued by	Revision Number	Issue Date	Page No
2019	Emma Humphreys	Armour AS	1	14/01/2020	5



## **Section 4: Positive and Presumed Photos Sheets**

**Item No: 1**

**Sample No: DK/1**

**Location: Shed**



<b>Material Description:</b>	Profiled Cement Roof	
<b>Identification:</b>	Sampled – Asbestos Detected	
<b>Approx. quantity:</b>	4M2	
<b>Accessibility</b>	Low	Assessment Score
<b>Product type:</b>	Cement	1
<b>Extent of Damage:</b>	Minor	1
<b>Surface Treatment:</b>	Unsealed	1
<b>Asbestos type:</b>	Chrysotile	1
<b>Material Assessment Score:</b>		4
<b>Priority Assessment Score:</b>		Negligible
<b>Action:</b>	Manage	
<b>Comments:</b>	N/A	

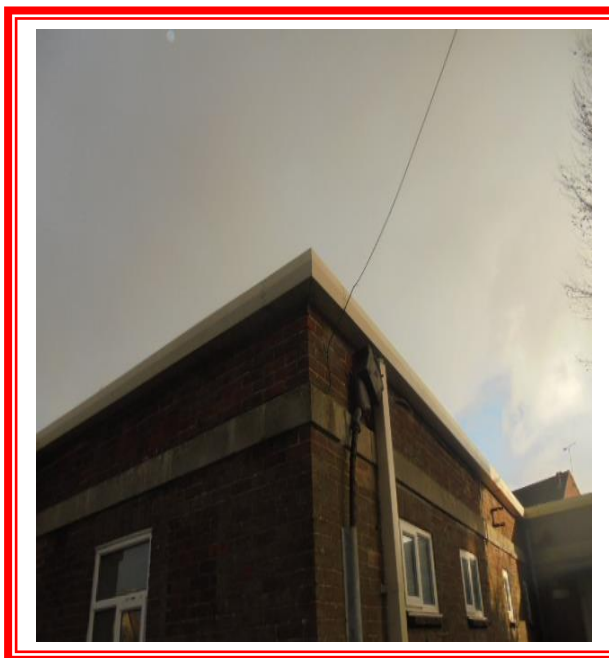
Document Name	Author	Issued by	Revision Number	Issue Date	Page No
2019	Emma Humphreys	Armour AS	1	14/01/2020	6



**Item No: 2****Sample No: N/A****Location: External – Old Boiler Room**

<b>Material Description:</b>	Lagging to Boiler and Pipework	
<b>Identification:</b>	Presumed to Contain Asbestos	
<b>Approx. quantity:</b>	Unknown	
<b>Accessibility</b>	Low	<i>Assessment Score</i>
<b>Product type:</b>	Lagging	3
<b>Extent of Damage:</b>	Major	3
<b>Surface Treatment:</b>	Unsealed	3
<b>Asbestos type:</b>	Crocidolite	3
<b>Material Assessment Score:</b>		12
<b>Priority Assessment Score:</b>		High
<b>Action:</b>	Manage	
<b>Comments:</b>	Old boiler room contained asbestos boiler and pipework lagging but have been filled in with concrete as informed by the site contact. Site contact was aware that asbestos lagging was present in old boiler room.	

Document Name	Author	Issued by	Revision Number	Issue Date	Page No
2019	Emma Humphreys	Armour AS	1	14/01/2020	7

**Item No: 3****Sample No: N/A****Location: External**

<b>Material Description:</b>	Electrical Box	
<b>Identification:</b>	Presumed to Contain Asbestos	
<b>Approx. quantity:</b>	X 1	
<b>Accessibility</b>	Low	<i>Assessment Score</i>
<b>Product type:</b>	No Access	2
<b>Extent of Damage:</b>	No Access	1
<b>Surface Treatment:</b>	No Access	1
<b>Asbestos type:</b>	No Access	1
<b>Material Assessment Score:</b>		5
<b>Priority Assessment Score:</b>		Low
<b>Action:</b>	Manage	
<b>Comments:</b>	No access as live	

Document Name	Author	Issued by	Revision Number	Issue Date	Page No
2019	Emma Humphreys	Armour AS	1	14/01/2020	8





**Item No: 4**

**Sample No: N/A**

**Location: External to Drill Hall**



<b>Material Description:</b>	Soffit Boards	
<b>Identification:</b>	Presumed to Contain Asbestos	
<b>Approx. quantity:</b>	42LM	
<b>Accessibility</b>	Low	Assessment Score
<b>Product type:</b>	No Access	2
<b>Extent of Damage:</b>	No Access	2
<b>Surface Treatment:</b>	No Access	2
<b>Asbestos type:</b>	No Access	2
<b>Material Assessment Score:</b>		8
<b>Priority Assessment Score:</b>		Medium
<b>Action:</b>	Manage	
<b>Comments:</b>	No access to inspect due to height	

Document Name	Author	Issued by	Revision Number	Issue Date	Page No
2019	Emma Humphreys	Armour AS	1	14/01/2020	9

**Item No: 10****Sample No: N/A****Location: Office**

<b>Material Description:</b>	Live Heater	
<b>Identification:</b>	Presumed to Contain Asbestos	
<b>Approx. quantity:</b>	X 1	
<b>Accessibility</b>	Low	Assessment Score
<b>Product type:</b>	No Access	2
<b>Extent of Damage:</b>	No Access	2
<b>Surface Treatment:</b>	No Access	2
<b>Asbestos type:</b>	No Access	2
<b>Material Assessment Score:</b>		8
<b>Priority Assessment Score:</b>		Medium
<b>Action:</b>	Manage	
<b>Comments:</b>	No access as live	

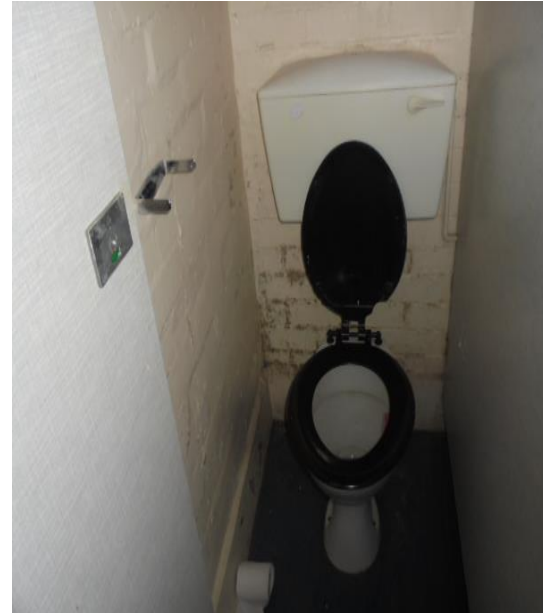
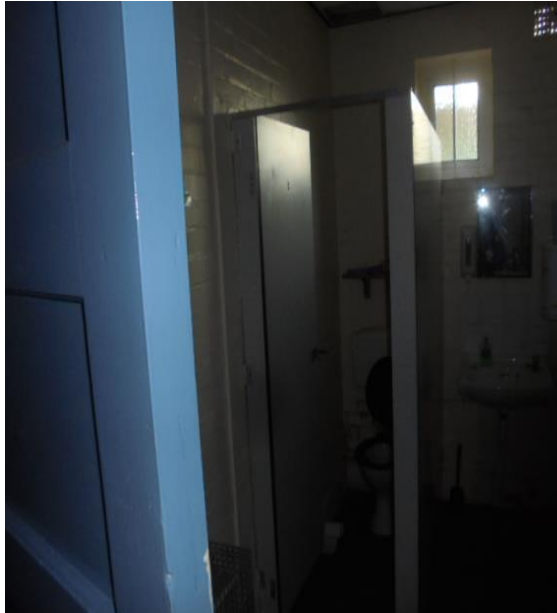
Document Name	Author	Issued by	Revision Number	Issue Date	Page No
2019	Emma Humphreys	Armour AS	1	14/01/2020	10



**Item No: 15**

**Sample No: N/A**

**Location: Female WC**



<b>Material Description:</b>	Toilet Seat	
<b>Identification:</b>	Presumed to Contain Asbestos	
<b>Approx. quantity:</b>	X 1 Seat	
<b>Accessibility</b>	High	Assessment Score
<b>Product type:</b>	Composite	1
<b>Extent of Damage:</b>	Minor	1
<b>Surface Treatment:</b>	Non-Friable	0
<b>Asbestos type:</b>	Chrysotile	1
<b>Material Assessment Score:</b>		3
<b>Priority Assessment Score:</b>		Negligible
<b>Action:</b>	Manage	
<b>Comments:</b>	Unable to sample as it may damage the integrity of the seat	

Document Name	Author	Issued by	Revision Number	Issue Date	Page No
2019	Emma Humphreys	Armour AS	1	14/01/2020	11



## Section 5: Negative Photos Sheets

**Item No: 5**

**Sample No: DK/2**

**Location: Kitchen**



<b>Material Description:</b>	Sink Pad	
<b>Identification:</b>	Sampled - No Asbestos Detected	
<b>Approx. quantity:</b>	X 1 Sink	
<b>Accessibility</b>	High	Assessment Score
<b>Product type:</b>	N/A	N/A
<b>Extent of Damage:</b>	N/A	N/A
<b>Surface Treatment:</b>	N/A	N/A
<b>Asbestos type:</b>	N/A	N/A
<b>Material Assessment Score:</b>		N/A
<b>Priority Assessment Score:</b>		N/A
<b>Action:</b>	N/A	
<b>Comments:</b>	N/A	

Document Name	Author	Issued by	Revision Number	Issue Date	Page No
2019	Emma Humphreys	Armour AS	1	14/01/2020	12



**Item No: 6**

**Sample No: N/A**

**Location: Kemble Classroom**



<b>Material Description:</b>	Visual Inspection – No Suspect Materials Found	
<b>Identification:</b>	N/A	
<b>Approx. quantity:</b>	N/A	
<b>Accessibility</b>	N/A	Assessment Score
<b>Product type:</b>	N/A	N/A
<b>Extent of Damage:</b>	N/A	N/A
<b>Surface Treatment:</b>	N/A	N/A
<b>Asbestos type:</b>	N/A	N/A
<b>Material Assessment Score:</b>		N/A
<b>Priority Assessment Score:</b>		N/A
<b>Action:</b>	N/A	
<b>Comments:</b>	No Access behind timber fireplace panel	

Document Name	Author	Issued by	Revision Number	Issue Date	Page No
2019	Emma Humphreys	Armour AS	1	14/01/2020	13



**Item No: 7**

**Sample No: N/A**

**Location: Lyneham Classroom and Cupboards x 2**



<b>Material Description:</b>	Visual Inspection – No Suspect Materials Found	
<b>Identification:</b>	N/A	
<b>Approx. quantity:</b>	N/A	
<b>Accessibility</b>	N/A	<i>Assessment Score</i>
<b>Product type:</b>	N/A	N/A
<b>Extent of Damage:</b>	N/A	N/A
<b>Surface Treatment:</b>	N/A	N/A
<b>Asbestos type:</b>	N/A	N/A
<b>Material Assessment Score:</b>		N/A
<b>Priority Assessment Score:</b>		N/A
<b>Action:</b>	N/A	
<b>Comments:</b>	N/A	

Document Name	Author	Issued by	Revision Number	Issue Date	Page No
2019	Emma Humphreys	Armour AS	1	14/01/2020	14





**Item No: 8**

**Sample No: N/A**

**Location: Drill Hall**



<b>Material Description:</b>	Visual Inspection – No Suspect Materials Found	
<b>Identification:</b>	N/A	
<b>Approx. quantity:</b>	N/A	
<b>Accessibility</b>	N/A	<i>Assessment Score</i>
<b>Product type:</b>	N/A	N/A
<b>Extent of Damage:</b>	N/A	N/A
<b>Surface Treatment:</b>	N/A	N/A
<b>Asbestos type:</b>	N/A	N/A
<b>Material Assessment Score:</b>		N/A
<b>Priority Assessment Score:</b>		N/A
<b>Action:</b>	N/A	
<b>Comments:</b>	N/A	

Document Name	Author	Issued by	Revision Number	Issue Date	Page No
2019	Emma Humphreys	Armour AS	1	14/01/2020	15



**Item No: 9**

**Sample No: N/A**

**Location: Lobby**



<b>Material Description:</b>	Visual Inspection – No Suspect Materials Found	
<b>Identification:</b>	N/A	
<b>Approx. quantity:</b>	N/A	
<b>Accessibility</b>	N/A	<i>Assessment Score</i>
<b>Product type:</b>	N/A	N/A
<b>Extent of Damage:</b>	N/A	N/A
<b>Surface Treatment:</b>	N/A	N/A
<b>Asbestos type:</b>	N/A	N/A
<b>Material Assessment Score:</b>		N/A
<b>Priority Assessment Score:</b>		N/A
<b>Action:</b>	N/A	
<b>Comments:</b>	N/A	

Document Name	Author	Issued by	Revision Number	Issue Date	Page No
2019	Emma Humphreys	Armour AS	1	14/01/2020	16



**Item No: 11**

**Sample No: N/A**

**Location: Office**



<b>Material Description:</b>	Visual Inspection – No Suspect Materials Found	
<b>Identification:</b>	N/A	
<b>Approx. quantity:</b>	N/A	
<b>Accessibility</b>	N/A	<i>Assessment Score</i>
<b>Product type:</b>	N/A	N/A
<b>Extent of Damage:</b>	N/A	N/A
<b>Surface Treatment:</b>	N/A	N/A
<b>Asbestos type:</b>	N/A	N/A
<b>Material Assessment Score:</b>		N/A
<b>Priority Assessment Score:</b>		N/A
<b>Action:</b>	N/A	
<b>Comments:</b>	No access behind timber fireplace panel	

Document Name	Author	Issued by	Revision Number	Issue Date	Page No
2019	Emma Humphreys	Armour AS	1	14/01/2020	17



**Item No: 12**

**Sample No: N/A**

**Location: Armoury**



<b>Material Description:</b>	Visual Inspection – No Suspect Materials Found	
<b>Identification:</b>	N/A	
<b>Approx. quantity:</b>	N/A	
<b>Accessibility</b>	N/A	<i>Assessment Score</i>
<b>Product type:</b>	N/A	N/A
<b>Extent of Damage:</b>	N/A	N/A
<b>Surface Treatment:</b>	N/A	N/A
<b>Asbestos type:</b>	N/A	N/A
<b>Material Assessment Score:</b>		N/A
<b>Priority Assessment Score:</b>		N/A
<b>Action:</b>	N/A	
<b>Comments:</b>	N/A	

Document Name	Author	Issued by	Revision Number	Issue Date	Page No
2019	Emma Humphreys	Armour AS	1	14/01/2020	18





**Item No: 13**

**Sample No: N/A**

**Location: Office**



<b>Material Description:</b>	Visual Inspection – No Suspect Materials Found	
<b>Identification:</b>	N/A	
<b>Approx. quantity:</b>	N/A	
<b>Accessibility</b>	N/A	Assessment Score
<b>Product type:</b>	N/A	N/A
<b>Extent of Damage:</b>	N/A	N/A
<b>Surface Treatment:</b>	N/A	N/A
<b>Asbestos type:</b>	N/A	N/A
<b>Material Assessment Score:</b>		N/A
<b>Priority Assessment Score:</b>		N/A
<b>Action:</b>	N/A	
<b>Comments:</b>	No access behind timber fireplace panel	

Document Name	Author	Issued by	Revision Number	Issue Date	Page No
2019	Emma Humphreys	Armour AS	1	14/01/2020	19



**Item No: 14**

**Sample No: N/A**

**Location: Male WC, Lobby and Store**



<b>Material Description:</b>	Visual Inspection – No Suspect Materials Found	
<b>Identification:</b>	N/A	
<b>Approx. quantity:</b>	N/A	
<b>Accessibility</b>	N/A	<i>Assessment Score</i>
<b>Product type:</b>	N/A	N/A
<b>Extent of Damage:</b>	N/A	N/A
<b>Surface Treatment:</b>	N/A	N/A
<b>Asbestos type:</b>	N/A	N/A
<b>Material Assessment Score:</b>		N/A
<b>Priority Assessment Score:</b>		N/A
<b>Action:</b>	N/A	
<b>Comments:</b>	N/A	

Document Name	Author	Issued by	Revision Number	Issue Date	Page No
2019	Emma Humphreys	Armour AS	1	14/01/2020	20

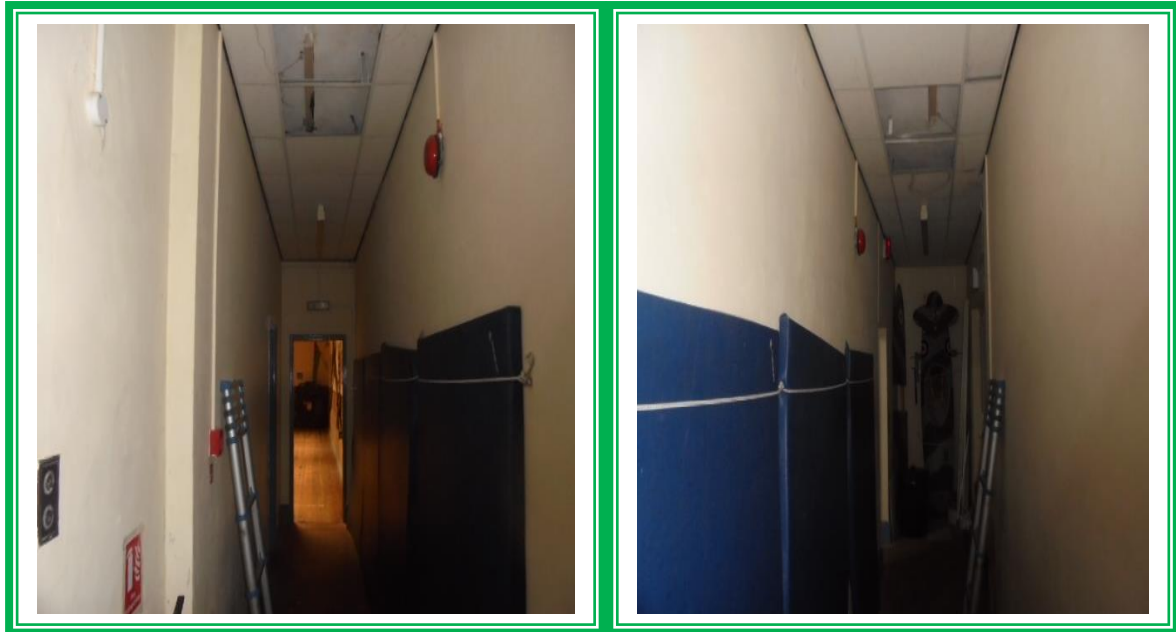




**Item No: 16**

**Sample No: N/A**

**Location: Corridor**



<b>Material Description:</b>	Visual Inspection – No Suspect Materials Found	
<b>Identification:</b>	N/A	
<b>Approx. quantity:</b>	N/A	
<b>Accessibility</b>	N/A	<i>Assessment Score</i>
<b>Product type:</b>	N/A	N/A
<b>Extent of Damage:</b>	N/A	N/A
<b>Surface Treatment:</b>	N/A	N/A
<b>Asbestos type:</b>	N/A	N/A
<b>Material Assessment Score:</b>		N/A
<b>Priority Assessment Score:</b>		N/A
<b>Action:</b>	N/A	
<b>Comments:</b>	N/A	

Document Name	Author	Issued by	Revision Number	Issue Date	Page No
2019	Emma Humphreys	Armour AS	1	14/01/2020	21



**Item No: 17**

**Sample No: N/A**

**Location: Range**



<b>Material Description:</b>	Visual Inspection – No Suspect Materials Found	
<b>Identification:</b>	N/A	
<b>Approx. quantity:</b>	N/A	
<b>Accessibility</b>	N/A	<i>Assessment Score</i>
<b>Product type:</b>	N/A	N/A
<b>Extent of Damage:</b>	N/A	N/A
<b>Surface Treatment:</b>	N/A	N/A
<b>Asbestos type:</b>	N/A	N/A
<b>Material Assessment Score:</b>		N/A
<b>Priority Assessment Score:</b>		N/A
<b>Action:</b>	N/A	
<b>Comments:</b>	N/A	

Document Name	Author	Issued by	Revision Number	Issue Date	Page No
2019	Emma Humphreys	Armour AS	1	14/01/2020	22

## **Section 6: Survey Objectives**

Instructions were received from Sue Morrell of Wessex RFCA to carry out a Management asbestos survey at 992 Malmesbury, Wiltshire, SN16 9JR in accordance with HSG264 and Armour Analytical's quality procedures.

The survey was carried out on 9<sup>th</sup> December 2019 by David Kelly with the objective of facilitating a Management report.

This Management survey is characterised as a 'Visual Inspection Sampling and Identification Survey' in HSG264. This type of survey is used to locate and describe, so far as is reasonably practicable, all asbestos containing materials (ACMs) in the building and will by its nature involve the partial destruction of the building's fabric as access is gained to all areas. A full sampling programme is undertaken to identify possible ACMs and estimate the extent of ACMs reported.

The objective of this survey report is to identify, so far as is reasonably practicable, the location, extent, product type and composition of ACMS within the building to enable the building occupants to put management and remedial procedures in place.

Document Name	Author	Issued by	Revision Number	Issue Date	Page No
2019	Emma Humphreys	Armour AS	1	14/01/2020	23

## **Section 7: Survey Techniques**

Each floor, room and area within the scope was systematically inspected for suspect materials thought or known to contain asbestos and where such materials were encountered their location, extent, and composition were recorded.

Where materials of a similar nature exist, to those previously sampled, and a reasoned argument can be made that their composition is likely to be identical further physical sampling was not undertaken.

Photographs were taken of all sample locations, unless otherwise stated.

The analysis of suspect ACMs was undertaken by a UKAS accredited laboratory using the analytical method detailed in *HSG248, Appendix 2 -Asbestos: The analysts' guide for sampling, analysis and clearance procedures*.

Document Name	Author	Issued by	Revision Number	Issue Date	Page No
2019	Emma Humphreys	Armour AS	1	14/01/2020	24

## **Section 8: Survey Caveat**

This report is based upon a management report inspection of an unfamiliar site. During the course of the survey all reasonable efforts were made to identify the physical presence of materials containing asbestos within the building.

A Management Survey is a non-intrusive survey, meaning that access within the fabric of the building is limited. The survey does not include access to the following areas (unless agreed beforehand with the Client and provisions are put in place):

- Within wall or ceiling construction;
- Under fixed flooring;
- Within non-openable boxings;
- Within live electrics, boilers or machinery;
- Where access/visibility is limited in an area due to stored items, furniture or services;
- Areas where there is no safe access to inspect such as floor ducts, lift shafts and loft spaces with no crawlboards;
- High level areas that are too high to safely inspect.
- Within pipework insulation throughout building as this would affect the integrity of services.

Any intrusive works carried out within the building must first be subject to a Refurbishment Asbestos Survey.

This report will be restricted to the areas that fall within the scope of works for project and will not take into account any area's that do not fall within the scope. Any asbestos that is identified within this report will need to be added to the buildings existing information and should not form the basis for a management survey. This survey will not include priority assessments nor will it include a register.

This survey considered the construction of the building, associated fixtures & fittings and associated structures and in no way should it be considered as a ground investigation report.

Services should be disconnected prior to commencement of a Management survey; however, where plant and/or electrical installations are live or appear to be live then these will not be accessed.

This survey report is not a bill of quantities.

Document Name	Author	Issued by	Revision Number	Issue Date	Page No
2019	Emma Humphreys	Armour AS	1	14/01/2020	25

## **Section 9: Survey Notes**

This report has been written with reference to the various Guidance Notes etc, issued, and current at the date of this report and describes circumstances at the site on the date the investigation took place.

Where similar items exist in the building, only one or two samples have been taken to ascertain the material content. It was assumed that similar products were of the same material.

Any person undertaking work within the buildings should be told of the presence of asbestos. This briefing also applies to any other person associated with the site, including staff, sub-contractors and others.

The drawings in the report are not to scale and are illustrative only to indicate approximate locations. The descriptions used are for location identification purposes.

All the recommendations described in this report are based upon assumptions made after consideration of the type of material, condition of the material, its location, analysis result and type of use the area is thought to be subjected to. However, statutory authorities or others could require amendments based on local knowledge, change in legislation, change in use or indeed other conditions or criteria.

Samples taken from floor tiles (or similar material) may include a bitumen adhesive as part of the sample. It is known that some proprietary brands of bitumen have an asbestos content and this will be included as an integral part of the bulk sample unless otherwise stated.

Document Name	Author	Issued by	Revision Number	Issue Date	Page No
2019	Emma Humphreys	Armour AS	1	14/01/2020	26



## Section 10: Material Assessment Algorithm

Variable	Score	Examples
Installation / Product type	1	Vinyl, 'Bakelite', Cement
	2	Asbestos insulating board, paper, rope
	3	Pipe insulation, spray coating, friable debris
Condition / damage	0	Good
	1	Slight / minor damage
	2	Moderate damage – breakage to surface treatment
	3	Major damage – smashed or exposed material
Surface treatment	0	Non-friable e.g. vinyl
	1	Enclosed insulation, encapsulated AIB
	2	Unsealed AIB, encapsulated insulation
	3	Unsealed insulation or spray coating
Asbestos type	1	Chrysotile
	2	Amosite & other amphiboles
	3	Crocidolite

The scores from each of the four sections are added together to produce a risk score:

Risk score	Risk assessment
<b>10 or more</b>	High risk
<b>7 – 9</b>	Medium risk
<b>5 – 6</b>	Low risk
<b>4 &amp; below</b>	Negligible risk

Document Name	Author	Issued by	Revision Number	Issue Date	Page No
2019	Emma Humphreys	Armour AS	1	14/01/2020	27



## **Section 11: Certificates of Bulk Analysis**



Our Ref: J181248 FI: 2  
Your Ref: 2481  
Date: 12/12/2019

**ENVIROCHEM**  
Analytical Laboratories Ltd.  
12 The Gardens  
Broadcut, Fareham  
Hampshire  
PO16 8SS



Tel: (01329) 287777  
Fax: (01329) 287755  
www.envirochem.co.uk  
office@envirochem.co.uk

### **Asbestos Fibre Identification Report**

**Client:** Armour Analytical Services Ltd  
Admirals Yard, Station Road, Patchway, Bristol, BS34 6LR  
**Site Address:** 992 Malmesbury Squadron Training Corps, Tetbury Hill, Malmesbury, Wiltshire, SN16 9JR  
**Sampled By:** Armour Analytical Services Ltd  
**Date sampled/received:** 10th December 2019  
**Date analysed:** 11th December 2019  
**Analyst/s:** Bradley Travis  
**Analysis Location:** 12 The Gardens, Broadcut, Fareham, Hampshire, PO16 8SS

#### **ANALYTICAL PROCEDURE**

Fibre identification was carried out in accordance with the documented 'in-house' method (2.01) based on the HSE Guidance Note HSG 248. These employed stereo microscopy, polarized microscopy and dispersion staining techniques.

#### **RESULTS**

Sample No.	Sample Ref.	Location	Asbestos Detected	Asbestos Type
DK/1	BS591282	Shed - Profiled Cement Roof	Yes	Chrysotile
DK/2	BS591283	Kitchen - Sink Pad	No	

#### **NOTES:**

1. Sample(s) were examined for the presence of 6 types of asbestos fibres: crocidolite (blue), amosite (brown), chrysotile (white), anthophyllite, actinolite and tremolite.
2. The results shown in this test report specifically refer to the sample(s) tested as received unless otherwise stated and samples collected by the client are evaluated using information provided by the client. For samples collected by the client the date of receipt is deemed to be the same as the date sampled.
3. Envirochem is a UKAS accredited laboratory for sampling and identification of asbestos containing materials.
4. Comments, observations and opinions are outside the scope of UKAS accreditation.
5. The analytical method in the ISO2484 does not quantify the amount of asbestos present, therefore UKAS accreditation does not permit quantification.
6. If, during fibre identification, only 1 or 2 fibres are seen and identified as asbestos, then the term 'trace asbestos identified' is used.
7. This report shall not be reproduced except in full, without written approval of Envirochem.

SIGNATURE:

*Bradley Travis*

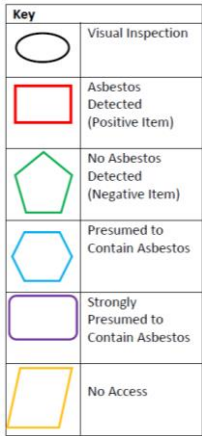
Authorised signatory

PRINT NAME: Bradley Travis

Reg. No. 2378228 England. Registered Office: Envirochem, 12 The Gardens, Broadcut, Fareham, Hampshire, PO16 8SS.

Page 1 of 1

Document Name	Author	Issued by	Revision Number	Issue Date	Page No
2019	Emma Humphreys	Armour AS	1	14/01/2020	28



Document Name	Author	Issued by	Revision Number	Issue Date	Page No
2019	Emma Humphreys	Armour AS	1	14/01/2020	29

**I the surveyor can confirm that this report is accurate to my findings onsite and this survey has been Content checked by myself.**

**Checked by: David Kelly**

**Date: 13/01/2019**

**I the Admin Manager can confirm that this report is accurate to the paperwork received and this survey has been quality checked by myself.**

**Checked by: Emma Humphreys**

**Date: 11.01.2020**

**Report Compiled By**

**Armour Analytical Services Ltd, Admirals Yard, Station Road, Bristol, BS34 6LR**

Document Name	Author	Issued by	Revision Number	Issue Date	Page No
2019	Emma Humphreys	Armour AS	1	14/01/2020	30