



ARMOUR
ANALYTICAL SERVICES

Project Number 2481

**Management
Asbestos Survey Report**

**232 Port Squadron, Bodmin, Cornwall,
PL31 1DX**



Working in Partnership with Shield Environmental Services



Document Name	Author	Issued by	Revision Number	Issue Date	Page No
2019	Emma Humphreys	Armour AS	0	13/11/2019	1

Contents

Section	
1	Contacts & Authorisation
2	Executive Summary
3	Site Description & Survey Information
4	Positive and Presumed Photos Sheets
5	Negative Photos Sheets
6	Survey Objectives
7	Survey Techniques
8	Survey Caveat
9	Survey Notes
10	Material Assessment Algorithm
11	Certificates of Bulk Analysis
12	Site Plan

Document Name	Author	Issued by	Revision Number	Issue Date	Page No
2019	Emma Humphreys	Armour AS	0	13/11/2019	2



Section 1: Contact Details

Client Details:		Instructing Party:	
Wessex RFCA Mount House Mount Street Taunton TA1 3QE		Shield Environmental Shield House Caxton Business Park Crown Way Bristol BS30 8XJ	
Contact Name:	Sue Morrell	Contact Name:	Chloe Smith
Tel: 01823250115	Fax: N/A	Tel: 01173012650	Fax: N/A

Site Address:		Report Author:	
232 Port Squadron Bodmin Cornwall PL31 1DX		Armour Analytical Services Admirals Yard Station Road Bristol BS34 6LR	
Contact Name:	Derek Waters	Contact Name:	Emma Humphreys
Tel: 0120872467	Fax: N/A	Mobile: 07468535836	

Lead Surveyor's Name:	Lead Surveyor's Authorising Signature:
S. Lillis	

Document Name	Author	Issued by	Revision Number	Issue Date	Page No
2019	Emma Humphreys	Armour AS	0	13/11/2019	3

Section 2: Executive Summary

No samples were taken during this survey

Document Name	Author	Issued by	Revision Number	Issue Date	Page No
2019	Emma Humphreys	Armour AS	0	13/11/2019	4

In addition to the above sampled items, the following items have been either been “Strongly Presumed” To Contain Asbestos or “Presumed” to Contain Asbestos as they were either visually identified in being so, labelled after previously being sampled on prior surveys or not accessible at the time of the survey:

- Item 1 – Second Floor – Safe Built in Wall – No Access as the door was locked
- Item 3 – Second Floor – Door Inside Room – No Access as the door handle was broken
- Item 5 – Second Floor – Lobby and Stairs – Floor Tiles and Stair Nosing – Strongly Presumed
- Item 6 – First Floor – Ladies WC – Cistern – Unable to sample as it would cause irreparable damage
- Item 7 – First Floor – Men’s WC - Cisterns – Unable to sample as it would cause irreparable damage
- Item 9 – first Floor – Stairwell – Floor Tiles – Unable to sample as under the carpet
- Item 10 – First Floor – ACF QM Office – Boxing in along back wall – No Access
- Item 12 – First Floor – ACF AO Office – Floor Tiles - Unable to sample as under the carpet
- Item 13 – First Floor – ACF AO Office - Boxing in- No Access
- Item 14 – First Floor – ACF Rest Room – Floor Tiles – Unable to sample as vinyl is covering the tiles
- Item 16 – First Floor – Zone 2 – Floor Tiles - Unable to sample as under the carpet
- Item 18 – Ground Floor – Ladies WC – Old Boiler – Unable to sample as live
- Item 19 – Ground Floor – Men’s WC – Old Boiler - Unable to sample as live
- Item 20 – Ground Floor – Men’s Toilets – Toilet Seat – Unable to sample as it would damage the integrity
- Item 21 – Ground Floor – Women’s WC – Cistern - Unable to sample as it would cause irreparable damage
- Item 22 – Ground Floor – Zone 3 – No Access as no key was available
- Item 23 – Ground Floor – Boiler Room – No Access as no key was available
- Item 24 – Ground Floor – Zone 1 –Floor Tiles - Unable to sample as under vinyl
- Item 25 – Ground Floor – Ammo Store – No Access as no key was available
- Item 26 – Ground Floor – Drill Hall – Parquet Flooring and Bitumen – Unable to sample as it would cause irreparable damage
- Item 27 – Ground Floor – Drill Hall and Gym – Storage Heater – No Access as live
- Item 28 – Ground Floor – SC – Floor Tiles and Storage Heater - No Access as live
- Item 29 – Ground Floor – OC Office – Floor Tiles - Unable to sample as under the carpet
- Item 30 – Ground Floor – PASO and OPS Offices – Floor Tiles - Unable to sample as under the carpet
- Item 31 – Ground Floor – SPSI Office – Safe – No Access as locked
- Item 32 – Ground Floor – Server Room – Floor Tiles - Unable to sample as under the carpet
- Item 33 – Ground Floor – Troop Office – Floor Tiles - Unable to sample as under the carpet
- Item 34 – Ground Floor – Hallway - Unable to sample as vinyl is covering the tiles
- Item 35 – Ground Floor – Stationary Office – Floor Tiles - Unable to sample as under the carpet
- Item 36 – Ground Floor – AO Office – Floor Tiles - Unable to sample as under the carpet
- Item 37 – Ground Floor – RRTT Zone 1 and Rest Room – Floor Tiles - Unable to sample as under the carpet
- Item 38 – Ground Floor – RRTT Office – Floor Tiles - Unable to sample as under the carpet
- Item 39 – Roof Front Elevation – Under Cloaking – Unable to sample due to height
- Item 41 – External Side Elevations – Down Pipes - Unable to sample as it would cause irreparable damage

The presence of asbestos in these areas cannot be ascertained at this time. If any works are to be carried out in these areas in the future, then these works should be approached cautiously.

In accordance with current legislation, any suspect materials encountered in these areas are to be assumed to contain asbestos until proven otherwise. This will normally involve cessation of works in the affected area.

Document Name	Author	Issued by	Revision Number	Issue Date	Page No
2019	Emma Humphreys	Armour AS	0	13/11/2019	5

Section 3: Site Description & Survey Information

Brief description on the general building construction

Masonry Construction

Caveat for no access areas

Storage heaters, plant equipment, safes and electrics

EXTERNAL MATERIALS

Roof Type	Pitched, Flat
Roof Materials	Tiles, Felt
Soffits	Wood
Fascia	Wood
Walls	Masonry
Verge Under cloaking	Presumed to Contain Asbestos Cement
Guttering	UPVC
Downpipes	UPVC, Presumed to Contain Asbestos Cement
Window/Door frames	UPVC
Other Materials	N/A

INTERNAL MATERIALS

Loft Insulation	N/A
Roof Underlining	Felt
Ceilings	Plastered
Walls <i>Internal</i>	Masonry, Stud
Floors	Floor Tiles, Vinyl, Carpet
Doors/Frames	Wood
Pipework/Insulation	Steel, Copper
Boxings	Wood
Boiler Make	Old – Presumed to Contain Asbestos
Flue Pipes	Presumed to Contain Asbestos
Storage Heaters	Presumed to Contain Asbestos
Electrical Boxes/Machinery	Presumed to Contain Asbestos
Ducting/Risers	N/A
Stairs	Wood
Lift Shafts	N/A
Other Materials	N/A

Document Name	Author	Issued by	Revision Number	Issue Date	Page No
2019	Emma Humphreys	Armour AS	0	13/11/2019	6



Section 4: Positive and Presumed Photos Sheets

Item No: 1

Sample No: N/A

Location: Second Floor – ATC Office



Material Description:	Safe Built into the Wall	
Identification:	Presumed to Contain Asbestos	
Approx. quantity:	X 1	
Accessibility	High	Assessment Score
Product type:	No Access	2
Extent of Damage:	No Access	3
Surface Treatment:	No Access	3
Asbestos type:	No Access	2
Material Assessment Score:		10
Priority Assessment Score:		High
Action:	Further Investigation Needed	
Comments:	No access to sample as it was locked	

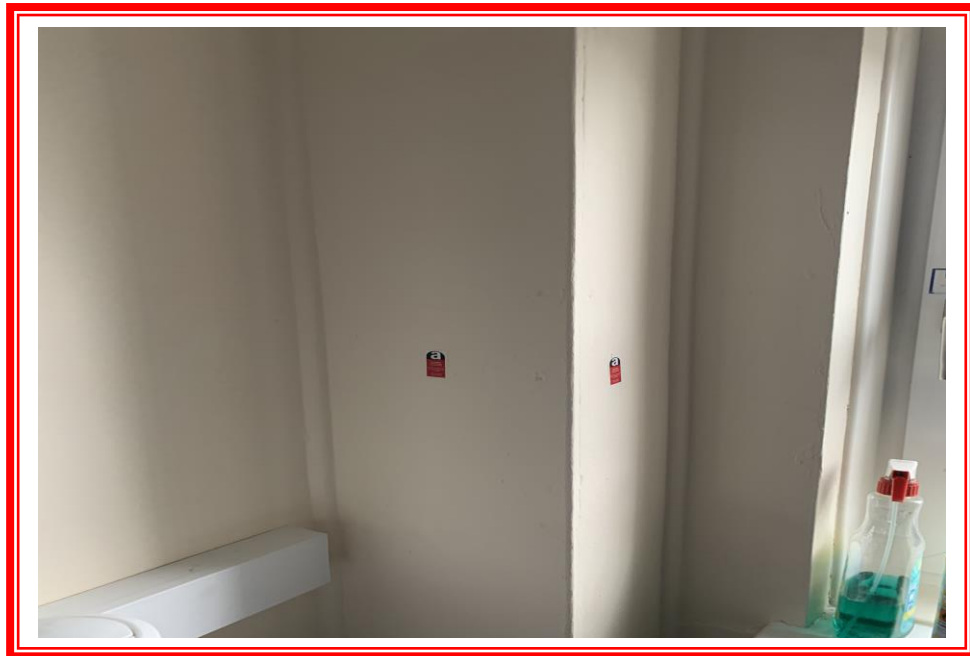
Document Name	Author	Issued by	Revision Number	Issue Date	Page No
2019	Emma Humphreys	Armour AS	0	13/11/2019	7



Item No: 2

Sample No: N/A

Location: Second Floor – ATC Office



Material Description:	Riser Panel	
Identification:	As Per Previous Sample REF93 – Asbestos Detected	
Approx. quantity:	1.5M2	
Accessibility	Low	Assessment Score
Product type:	AIB	2
Extent of Damage:	Minor	1
Surface Treatment:	Encapsulated	1
Asbestos type:	Amosite	2
Material Assessment Score:		6
Priority Assessment Score:		Low
Action:	Manage	
Comments:	N/A	

Document Name	Author	Issued by	Revision Number	Issue Date	Page No
2019	Emma Humphreys	Armour AS	0	13/11/2019	8



Item No: 3

Sample No: N/A

Location: Second Floor – ATC Office



Material Description:	Door Inside Room	
Identification:	Presumed to Contain Asbestos	
Approx. quantity:	Unknown	
Accessibility	High	Assessment Score
Product type:	No Access	3
Extent of Damage:	No Access	3
Surface Treatment:	No Access	3
Asbestos type:	No Access	3
Material Assessment Score:		12
Priority Assessment Score:		High
Action:	Further Investigation Needed	
Comments:	No access to sample as the door handle was broken	

Document Name	Author	Issued by	Revision Number	Issue Date	Page No
2019	Emma Humphreys	Armour AS	0	13/11/2019	9



Item No: 4

Sample No: N/A

Location: second Floor – ATC Training Room



Material Description:	Floor Tiles	
Identification:	As Per Previous Sample REF96 – Asbestos Detected	
Approx. quantity:	20M2	
Accessibility	Medium	Assessment Score
Product type:	Vinyl	1
Extent of Damage:	Minor	1
Surface Treatment:	Non-Friable	0
Asbestos type:	Chrysotile	1
Material Assessment Score:		3
Priority Assessment Score:		Negligible
Action:	Manage	
Comments:	N/A	

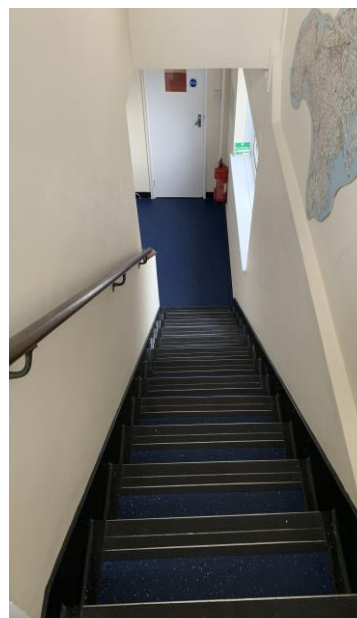
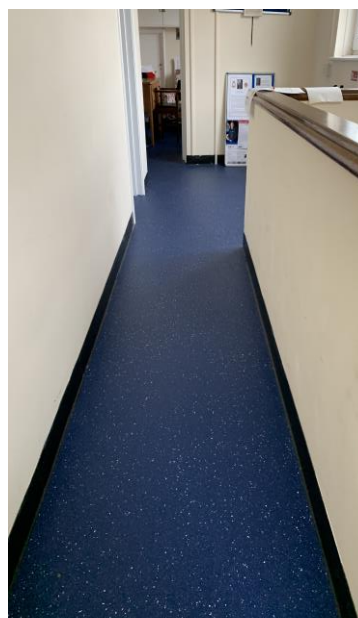
Document Name	Author	Issued by	Revision Number	Issue Date	Page No
2019	Emma Humphreys	Armour AS	0	13/11/2019	10



Item No: 5

Sample No: N/A

Location: Second Floor – Lobby and Stairs



Material Description:	Floor Tiles and Stair Nosing	
Identification:	Strongly Presumed to Contain Asbestos	
Approx. quantity:	18M2	
Accessibility	Medium	Assessment Score
Product type:	Vinyl	1
Extent of Damage:	Minor	1
Surface Treatment:	Non-Friable	0
Asbestos type:	Chrysotile	1
Material Assessment Score:		3
Priority Assessment Score:		Negligible
Action:	Manage	
Comments:	N/A	

Document Name	Author	Issued by	Revision Number	Issue Date	Page No
2019	Emma Humphreys	Armour AS	0	13/11/2019	11



Item No: 6

Sample No: N/A

Location: First Floor – Ladies WC



Material Description:	Toilet Cistern	
Identification:	Presumed to Contain Asbestos	
Approx. quantity:	X 1	
Accessibility	Medium	Assessment Score
Product type:	Composite	1
Extent of Damage:	Good	0
Surface Treatment:	Non-Friable	1
Asbestos type:	Chrysotile	1
Material Assessment Score:		3
Priority Assessment Score:		Negligible
Action:	Manage	
Comments:	Unable to sample as it would cause irreparable damage	

Document Name	Author	Issued by	Revision Number	Issue Date	Page No
2019	Emma Humphreys	Armour AS	0	13/11/2019	12



Item No: 7

Sample No: N/A

Location: First Floor – Men's WC



Material Description:	Toilet Cistern	
Identification:	Presumed to Contain Asbestos	
Approx. quantity:	X 2	
Accessibility	Medium	Assessment Score
Product type:	Composite	1
Extent of Damage:	Good	0
Surface Treatment:	Non-Friable	1
Asbestos type:	Chrysotile	1
Material Assessment Score:		3
Priority Assessment Score:		Negligible
Action:	Manage	
Comments:	Unable to sample as it would cause irreparable damage	

Document Name	Author	Issued by	Revision Number	Issue Date	Page No
2019	Emma Humphreys	Armour AS	0	13/11/2019	13



Item No: 8

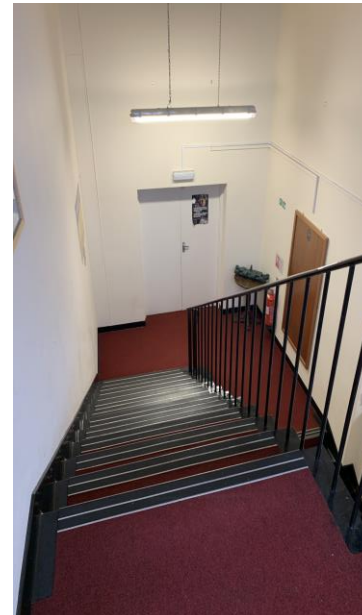
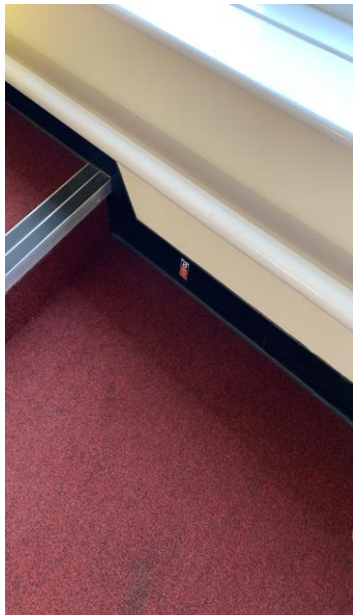
Sample No: N/A

Location: First Floor – ACF Conference Room



Material Description:	Floor Tiles	
Identification:	As Per Previous Sample REF78 – Asbestos Detected	
Approx. quantity:	16M2	
Accessibility	Medium	Assessment Score
Product type:	Vinyl	1
Extent of Damage:	Good	0
Surface Treatment:	Non-Friable	0
Asbestos type:	Chrysotile	1
Material Assessment Score:		2
Priority Assessment Score:		Negligible
Action:	Manage	
Comments:	The floor tiles are covered with carpet	

Document Name	Author	Issued by	Revision Number	Issue Date	Page No
2019	Emma Humphreys	Armour AS	0	13/11/2019	14

**Item No: 9****Sample No: N/A****Location: First Floor – Stairwell**

Material Description:	Floor Tiles	
Identification:	Strongly Presumed to Contain Asbestos	
Approx. quantity:	6.5M2	
Accessibility	Medium	Assessment Score
Product type:	Vinyl	1
Extent of Damage:	Good	0
Surface Treatment:	Non-Friable	0
Asbestos type:	Chrysotile	1
Material Assessment Score:		2
Priority Assessment Score:		Negligible
Action:	Manage	
Comments:	The floor tiles are covered with carpet	

Document Name	Author	Issued by	Revision Number	Issue Date	Page No
2019	Emma Humphreys	Armour AS	0	13/11/2019	15



Item No: 10

Sample No: N/A

Location: First Floor – ACT QM Office



Material Description:	Boxing in along the back wall	
Identification:	Presumed to Contain Asbestos	
Approx. quantity:	6LM	
Accessibility	High	Assessment Score
Product type:	No Access	3
Extent of Damage:	No Access	3
Surface Treatment:	No Access	3
Asbestos type:	No Access	3
Material Assessment Score:		12
Priority Assessment Score:		High
Action:	Further Investigation Needed	
Comments:	No access to sample	

Document Name	Author	Issued by	Revision Number	Issue Date	Page No
2019	Emma Humphreys	Armour AS	0	13/11/2019	16



Item No: 11

Sample No: N/A

Location: First Floor – ACF Stationary Room



Material Description:	Floor Tiles	
Identification:	As Per Previous Sample REF16 – Asbestos Detected	
Approx. quantity:	22M2	
Accessibility	Medium	Assessment Score
Product type:	Vinyl	1
Extent of Damage:	Good	0
Surface Treatment:	Non-Friable	0
Asbestos type:	Chrysotile	1
Material Assessment Score:		2
Priority Assessment Score:		Negligible
Action:	Manage	
Comments:	Beige floor tiles were previously presumed in the older survey, black floor tiles are strongly presumed	

Document Name	Author	Issued by	Revision Number	Issue Date	Page No
2019	Emma Humphreys	Armour AS	0	13/11/2019	17



Item No: 12

Sample No: N/A

Location: First Floor – ACF AO Office



Material Description:	Floor Tiles	
Identification:	Strongly Presumed to Contain Asbestos	
Approx. quantity:	29M2	
Accessibility	Medium	Assessment Score
Product type:	Vinyl	1
Extent of Damage:	Good	0
Surface Treatment:	Non-Friable	0
Asbestos type:	Chrysotile	1
Material Assessment Score:		2
Priority Assessment Score:		Negligible
Action:	Manage	
Comments:	The floor tiles are covered with carpet	

Document Name	Author	Issued by	Revision Number	Issue Date	Page No
2019	Emma Humphreys	Armour AS	0	13/11/2019	18

**Item No: 13****Sample No: N/A****Location: First Floor – ACF AO Office**

Material Description:	Boxing in	
Identification:	Presumed to Contain Asbestos	
Approx. quantity:	6LM	
Accessibility	High	<i>Assessment Score</i>
Product type:	No Access	3
Extent of Damage:	No Access	3
Surface Treatment:	No Access	3
Asbestos type:	No Access	3
Material Assessment Score:		12
Priority Assessment Score:		High
Action:	Further Investigation Needed	
Comments:	No access to sample	

Document Name	Author	Issued by	Revision Number	Issue Date	Page No
2019	Emma Humphreys	Armour AS	0	13/11/2019	19



Item No: 14

Sample No: N/A

Location: First Floor – ACF Rest Room



Material Description:	Floor Tiles	
Identification:	Strongly Presumed to Contain Asbestos	
Approx. quantity:	10M2	
Accessibility	Medium	Assessment Score
Product type:	Vinyl	1
Extent of Damage:	Good	0
Surface Treatment:	Non-Friable	0
Asbestos type:	Chrysotile	1
Material Assessment Score:		2
Priority Assessment Score:		Negligible
Action:	Manage	
Comments:	The floor tiles are covered with carpet	

Document Name	Author	Issued by	Revision Number	Issue Date	Page No
2019	Emma Humphreys	Armour AS	0	13/11/2019	20



Item No: 15

Sample No: N/A

Location: First Floor – ACF Rest Room



Material Description:	Floor Tiles	
Identification:	As Per Previous Sample REF16 – Asbestos Detected	
Approx. quantity:	43M2	
Accessibility	Medium	Assessment Score
Product type:	Vinyl	1
Extent of Damage:	Good	0
Surface Treatment:	Non-Friable	0
Asbestos type:	Chrysotile	1
Material Assessment Score:		2
Priority Assessment Score:		Negligible
Action:	Manage	
Comments:	The floor tiles are covered with carpet	

Document Name	Author	Issued by	Revision Number	Issue Date	Page No
2019	Emma Humphreys	Armour AS	0	13/11/2019	21



Item No: 16

Sample No: N/A

Location: First floor – Zone 2



Material Description:	Floor Tiles	
Identification:	Strongly Presumed to Contain Asbestos	
Approx. quantity:	24M2	
Accessibility	Medium	Assessment Score
Product type:	Vinyl	1
Extent of Damage:	Good	0
Surface Treatment:	Non-Friable	0
Asbestos type:	Chrysotile	1
Material Assessment Score:		2
Priority Assessment Score:		Negligible
Action:	Manage	
Comments:	The floor tiles are covered with carpet	

Document Name	Author	Issued by	Revision Number	Issue Date	Page No
2019	Emma Humphreys	Armour AS	0	13/11/2019	22



Item No: 18

Sample No: N/A

Location: Ground Floor – Ladies WC



Material Description:	Old Boiler	
Identification:	Presumed to Contain Asbestos	
Approx. quantity:	X 1	
Accessibility	High	Assessment Score
Product type:	No Access	3
Extent of Damage:	No Access	3
Surface Treatment:	No Access	3
Asbestos type:	No Access	3
Material Assessment Score:		12
Priority Assessment Score:		High
Action:	Further Investigation Needed	
Comments:	No access to sample as it was live	

Document Name	Author	Issued by	Revision Number	Issue Date	Page No
2019	Emma Humphreys	Armour AS	0	13/11/2019	23



Item No: 19

Sample No: N/A

Location: Ground Floor – Men's WC



Material Description:	Old Boiler	
Identification:	Presumed to Contain Asbestos	
Approx. quantity:	X 1	
Accessibility	High	Assessment Score
Product type:	No Access	3
Extent of Damage:	No Access	3
Surface Treatment:	No Access	3
Asbestos type:	No Access	3
Material Assessment Score:		12
Priority Assessment Score:		High
Action:	Further Investigation Needed	
Comments:	No access to sample as it was live	

Document Name	Author	Issued by	Revision Number	Issue Date	Page No
2019	Emma Humphreys	Armour AS	0	13/11/2019	24



Item No: 20

Sample No: N/A

Location: Ground Floor – Men's WC



Material Description:	Toilet Seat	
Identification:	Presumed to Contain Asbestos	
Approx. quantity:	X 1	
Accessibility	Medium	Assessment Score
Product type:	Composite	1
Extent of Damage:	Good	0
Surface Treatment:	Non-Friable	1
Asbestos type:	Chrysotile	1
Material Assessment Score:		3
Priority Assessment Score:		Negligible
Action:	Manage	
Comments:	Unable to sample as it would cause irreparable damage	

Document Name	Author	Issued by	Revision Number	Issue Date	Page No
2019	Emma Humphreys	Armour AS	0	13/11/2019	25



Item No: 21

Sample No: N/A

Location: Ground Floor – Women's WC



Material Description:	Toilet Cistern	
Identification:	Presumed to Contain Asbestos	
Approx. quantity:	X 1	
Accessibility	Low	Assessment Score
Product type:	Composite	1
Extent of Damage:	Good	0
Surface Treatment:	Non-Friable	1
Asbestos type:	Chrysotile	1
Material Assessment Score:		3
Priority Assessment Score:		Negligible
Action:	Manage	
Comments:	Unable to sample as it would cause irreparable damage	

Document Name	Author	Issued by	Revision Number	Issue Date	Page No
2019	Emma Humphreys	Armour AS	0	13/11/2019	26



Item No: 22

Sample No: N/A

Location: Ground Floor – Zone 3



Material Description:	No Access	
Identification:	Presumed to Contain Asbestos	
Approx. quantity:	Unknown	
Accessibility	High	<i>Assessment Score</i>
Product type:	No Access	3
Extent of Damage:	No Access	3
Surface Treatment:	No Access	3
Asbestos type:	No Access	3
Material Assessment Score:		12
Priority Assessment Score:		High
Action:	Further Investigation Needed	
Comments:	No access to sample as locked	

Document Name	Author	Issued by	Revision Number	Issue Date	Page No
2019	Emma Humphreys	Armour AS	0	13/11/2019	27



Item No: 23

Sample No: N/A

Location: Ground Floor – Boiler Room



Material Description:	No Access	
Identification:	Presumed to Contain Asbestos	
Approx. quantity:	Unknown	
Accessibility	High	Assessment Score
Product type:	No Access	3
Extent of Damage:	No Access	3
Surface Treatment:	No Access	3
Asbestos type:	No Access	3
Material Assessment Score:		12
Priority Assessment Score:		High
Action:	Further Investigation Needed	
Comments:	No access to sample as locked	

Document Name	Author	Issued by	Revision Number	Issue Date	Page No
2019	Emma Humphreys	Armour AS	0	13/11/2019	28



Item No: 24

Sample No: N/A

Location: Ground Floor – Zone 1



Material Description:	Floor Tiles	
Identification:	Strongly Presumed to Contain Asbestos	
Approx. quantity:	7M2	
Accessibility	Low	Assessment Score
Product type:	Vinyl	1
Extent of Damage:	Good	0
Surface Treatment:	Non-Friable	0
Asbestos type:	Chrysotile	1
Material Assessment Score:		2
Priority Assessment Score:		Negligible
Action:	Manage	
Comments:	The floor tiles are covered with vinyl	

Document Name	Author	Issued by	Revision Number	Issue Date	Page No
2019	Emma Humphreys	Armour AS	0	13/11/2019	29



Item No: 25

Sample No: N/A

Location: Ground Floor – Ammo Store



Material Description:	No Access	
Identification:	Presumed to Contain Asbestos	
Approx. quantity:	Unknown	
Accessibility	High	Assessment Score
Product type:	No Access	3
Extent of Damage:	No Access	3
Surface Treatment:	No Access	3
Asbestos type:	No Access	3
Material Assessment Score:		12
Priority Assessment Score:		High
Action:	Further Investigation Needed	
Comments:	No access to sample as locked	

Document Name	Author	Issued by	Revision Number	Issue Date	Page No
2019	Emma Humphreys	Armour AS	0	13/11/2019	30



Item No: 26

Sample No: N/A

Location: Ground Floor – Drill Hall



Material Description:	Parquet Flooring and Bitumen	
Identification:	Presumed to Contain Asbestos	
Approx. quantity:	70M2	
Accessibility	High	<i>Assessment Score</i>
Product type:	Bitumen	1
Extent of Damage:	Minor	1
Surface Treatment:	Encapsulated	2
Asbestos type:	Chrysotile	1
Material Assessment Score:		5
Priority Assessment Score:		Low
Action:	Manage	
Comments:	N/A	

Document Name	Author	Issued by	Revision Number	Issue Date	Page No
2019	Emma Humphreys	Armour AS	0	13/11/2019	31



Item No: 27

Sample No: N/A

Location: Ground Floor – Drill Hall/Gym



Material Description:	Storage Heater	
Identification:	Presumed to Contain Asbestos	
Approx. quantity:	X 1	
Accessibility	High	Assessment Score
Product type:	No Access	2
Extent of Damage:	No Access	0
Surface Treatment:	No Access	1
Asbestos type:	No Access	2
Material Assessment Score:		5
Priority Assessment Score:		Low
Action:	Manage	
Comments:	No access to sample as live	

Document Name	Author	Issued by	Revision Number	Issue Date	Page No
2019	Emma Humphreys	Armour AS	0	13/11/2019	32



Item No: 28

Sample No: N/A

Location: Ground Floor - SC



Material Description:	Floor Tiles and Storage Heater	
Identification:	Strongly Presumed to Contain Asbestos	
Approx. quantity:	20M2 (Floor Tiles) x 1 (Storage Heater)	
Accessibility	Medium	Assessment Score
Product type:	Composite	1
Extent of Damage:	Good	0
Surface Treatment:	Non-Friable	0
Asbestos type:	Chrysotile	1
Material Assessment Score:		2
Priority Assessment Score:		Negligible
Action:	Manage	
Comments:	The floor tiles are covered with carpet. Floor tiles are presumed to be as per item 11	

Document Name	Author	Issued by	Revision Number	Issue Date	Page No
2019	Emma Humphreys	Armour AS	0	13/11/2019	33



Item No: 29

Sample No: N/A

Location: Ground Floor – OC Office



Material Description:	Floor Tiles	
Identification:	Strongly Presumed to Contain Asbestos	
Approx. quantity:	24M2	
Accessibility	Low	Assessment Score
Product type:	Composite	1
Extent of Damage:	Good	0
Surface Treatment:	Non-Friable	0
Asbestos type:	Chrysotile	1
Material Assessment Score:		2
Priority Assessment Score:		Negligible
Action:	Manage	
Comments:	The floor tiles are covered with carpet	

Document Name	Author	Issued by	Revision Number	Issue Date	Page No
2019	Emma Humphreys	Armour AS	0	13/11/2019	34



Item No: 30

Sample No: N/A

Location: Ground Floor – PASO and OPS Offices



Material Description:	Floor Tiles	
Identification:	Strongly Presumed to Contain Asbestos	
Approx. quantity:	45M2	
Accessibility	Low	Assessment Score
Product type:	Composite	1
Extent of Damage:	Good	0
Surface Treatment:	Non-Friable	0
Asbestos type:	Chrysotile	1
Material Assessment Score:		2
Priority Assessment Score:		Negligible
Action:	Manage	
Comments:	The floor tiles are covered with carpet	

Document Name	Author	Issued by	Revision Number	Issue Date	Page No
2019	Emma Humphreys	Armour AS	0	13/11/2019	35



Item No: 31

Sample No: N/A

Location: Ground Floor – SPSI Office



Material Description:	Safe	
Identification:	Presumed to Contain Asbestos	
Approx. quantity:	X 1	
Accessibility	High	Assessment Score
Product type:	No Access	3
Extent of Damage:	No Access	3
Surface Treatment:	No Access	3
Asbestos type:	No Access	3
Material Assessment Score:		12
Priority Assessment Score:		High
Action:	Manage	
Comments:	No access to sample	

Document Name	Author	Issued by	Revision Number	Issue Date	Page No
2019	Emma Humphreys	Armour AS	0	13/11/2019	36



Item No: 32

Sample No: N/A

Location: Ground Floor – Server Room



Material Description:	Floor Tiles	
Identification:	Presumed to Contain Asbestos	
Approx. quantity:	18M2	
Accessibility	Low	Assessment Score
Product type:	Composite	1
Extent of Damage:	Good	0
Surface Treatment:	Non-Friable	0
Asbestos type:	Chrysotile	1
Material Assessment Score:		2
Priority Assessment Score:		Negligible
Action:	Manage	
Comments:	The floor tiles are covered with carpet	

Document Name	Author	Issued by	Revision Number	Issue Date	Page No
2019	Emma Humphreys	Armour AS	0	13/11/2019	37



Item No: 33

Sample No: N/A

Location: Ground Floor – Troop Office



Material Description:	Floor Tiles	
Identification:	Presumed to Contain Asbestos	
Approx. quantity:	18M2	
Accessibility	Low	Assessment Score
Product type:	Composite	1
Extent of Damage:	Good	0
Surface Treatment:	Non-Friable	0
Asbestos type:	Chrysotile	1
Material Assessment Score:		2
Priority Assessment Score:		Negligible
Action:	Manage	
Comments:	The floor tiles are covered with carpet	

Document Name	Author	Issued by	Revision Number	Issue Date	Page No
2019	Emma Humphreys	Armour AS	0	13/11/2019	38



Item No: 34

Sample No: N/A

Location: Ground Floor – Hallway



Material Description:	Floor Tiles	
Identification:	Presumed to Contain Asbestos	
Approx. quantity:	20M2	
Accessibility	Low	Assessment Score
Product type:	Composite	1
Extent of Damage:	Good	0
Surface Treatment:	Non-Friable	0
Asbestos type:	Chrysotile	1
Material Assessment Score:		2
Priority Assessment Score:		Negligible
Action:	Manage	
Comments:	The floor tiles are covered with carpet	

Document Name	Author	Issued by	Revision Number	Issue Date	Page No
2019	Emma Humphreys	Armour AS	0	13/11/2019	39



Item No: 35

Sample No: N/A

Location: Ground Floor – Stationary Office



Material Description:	Floor Tiles	
Identification:	Presumed to Contain Asbestos	
Approx. quantity:	15M2	
Accessibility	Low	Assessment Score
Product type:	Composite	1
Extent of Damage:	Good	0
Surface Treatment:	Non-Friable	0
Asbestos type:	Chrysotile	1
Material Assessment Score:		2
Priority Assessment Score:		Negligible
Action:	Manage	
Comments:	The floor tiles are covered with carpet	

Document Name	Author	Issued by	Revision Number	Issue Date	Page No
2019	Emma Humphreys	Armour AS	0	13/11/2019	40

**Item No: 36****Sample No: N/A****Location: Ground Floor – AO Office**

Material Description:	Floor Tiles	
Identification:	As Per Previous Sample REF30 and 31 – Asbestos Detected	
Approx. quantity:	43M2	
Accessibility	High	Assessment Score
Product type:	Composite	1
Extent of Damage:	Good	0
Surface Treatment:	Non-Friable	0
Asbestos type:	Chrysotile	1
Material Assessment Score:		2
Priority Assessment Score:		Negligible
Action:	Manage	
Comments:	The floor tiles are covered with carpet	

Document Name	Author	Issued by	Revision Number	Issue Date	Page No
2019	Emma Humphreys	Armour AS	0	13/11/2019	41



Item No: 37

Sample No: N/A

Location: Ground Floor – Rest Room and RRTT



Material Description:	Floor Tiles	
Identification:	Presumed to Contain Asbestos	
Approx. quantity:	70M2	
Accessibility	Low	Assessment Score
Product type:	Composite	1
Extent of Damage:	Good	0
Surface Treatment:	Non-Friable	0
Asbestos type:	Chrysotile	1
Material Assessment Score:		2
Priority Assessment Score:		Negligible
Action:	Manage	
Comments:	The floor tiles are covered with carpet	

Document Name	Author	Issued by	Revision Number	Issue Date	Page No
2019	Emma Humphreys	Armour AS	0	13/11/2019	42



Item No: 38

Sample No: N/A

Location: Ground Floor – RRTT Office



Material Description:	Floor Tiles	
Identification:	Presumed to Contain Asbestos	
Approx. quantity:	15M2	
Accessibility	Low	<i>Assessment Score</i>
Product type:	Composite	1
Extent of Damage:	Good	0
Surface Treatment:	Non-Friable	0
Asbestos type:	Chrysotile	1
Material Assessment Score:		2
Priority Assessment Score:		Negligible
Action:	Manage	
Comments:	The floor tiles are covered with carpet	

Document Name	Author	Issued by	Revision Number	Issue Date	Page No
2019	Emma Humphreys	Armour AS	0	13/11/2019	43

**Item No: 39****Sample No: N/A****Location: Roof – Front Elevation**

Material Description:	Under Cloaking	
Identification:	Presumed to Contain Asbestos	
Approx. quantity:	16LM	
Accessibility	High	Assessment Score
Product type:	Cement	1
Extent of Damage:	Minor	1
Surface Treatment:	Unsealed	1
Asbestos type:	Chrysotile	1
Material Assessment Score:		4
Priority Assessment Score:		Negligible
Action:	Manage	
Comments:	Unable to sample due to height	

Document Name	Author	Issued by	Revision Number	Issue Date	Page No
2019	Emma Humphreys	Armour AS	0	13/11/2019	44



Item No: 40

Sample No: N/A

Location: Roof – Lights on Flat Roof



Material Description:	Roof Lights	
Identification:	As Per Previous Sample REF111 – Asbestos Detected	
Approx. quantity:	X 6	
Accessibility	High	Assessment Score
Product type:	Rope	2
Extent of Damage:	Moderate	2
Surface Treatment:	Unsealed	3
Asbestos type:	Chrysotile	1
Material Assessment Score:		8
Priority Assessment Score:		Medium
Action:	Manage	
Comments:	Monitor Annually	

Document Name	Author	Issued by	Revision Number	Issue Date	Page No
2019	Emma Humphreys	Armour AS	0	13/11/2019	45



Item No: 41

Sample No: N/A

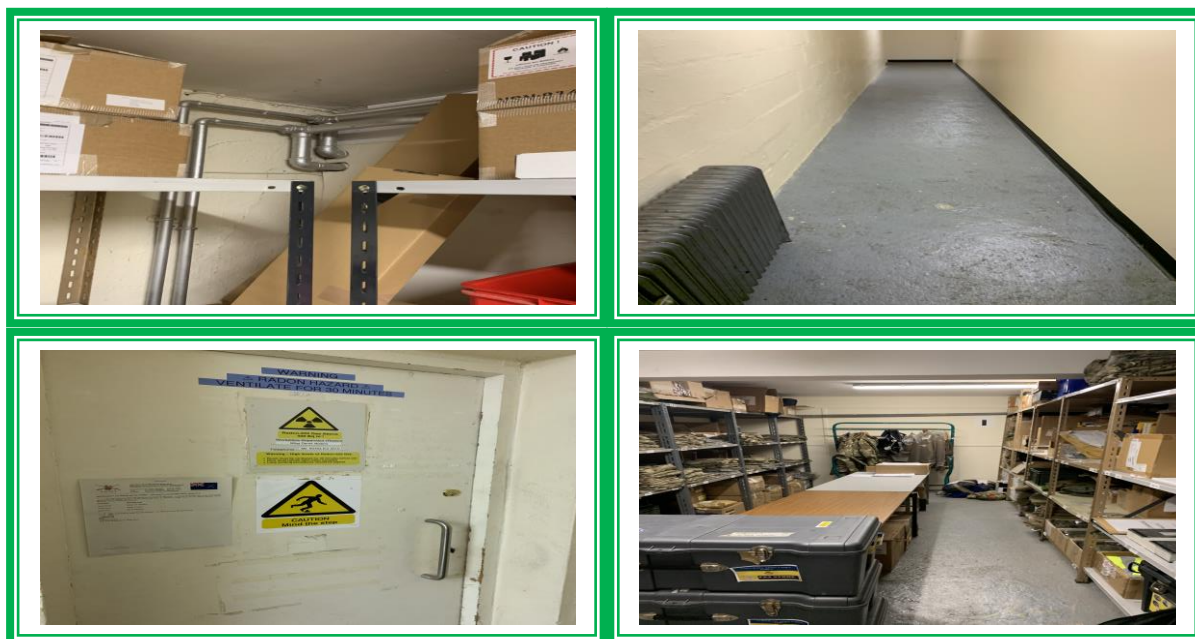
Location: External – Side Elevation



Material Description:	Downpipes	
Identification:	Strongly Presumed to Contain Asbestos	
Approx. quantity:	12LM	
Accessibility	High	Assessment Score
Product type:	Cement	1
Extent of Damage:	Minor	1
Surface Treatment:	Unsealed	1
Asbestos type:	Chrysotile	1
Material Assessment Score:		4
Priority Assessment Score:		Negligible
Action:	Manage	
Comments:	N/A	

Document Name	Author	Issued by	Revision Number	Issue Date	Page No
2019	Emma Humphreys	Armour AS	0	13/11/2019	46

Section 5: Negative Photos Sheets

Item No: 17
Sample No: N/A
Location: Ground Floor – ACF Stores


Material Description:	Visual Inspection – No Suspect Materials Found	
Identification:	N/A	
Approx. quantity:	N/A	
Accessibility	N/A	<i>Assessment Score</i>
Product type:	N/A	N/A
Extent of Damage:	N/A	N/A
Surface Treatment:	N/A	N/A
Asbestos type:	N/A	N/A
Material Assessment Score:		N/A
Priority Assessment Score:		N/A
Action:	N/A	
Comments:	N/A	

Document Name	Author	Issued by	Revision Number	Issue Date	Page No
2019	Emma Humphreys	Armour AS	0	13/11/2019	47

Section 6: Survey Objectives

Instructions were received from Sue Morrell of Wessex RFCA to carry out a Management asbestos survey at 232 Port Squadron, Bodmin, Cornwall, PL31 1DX in accordance with HSG264 and Armour Analytical's quality procedures.

The survey was carried out on 14th October 2019 by Steve Lillis with the objective of facilitating a Management report.

This Management survey is characterised as a 'Visual Inspection Sampling and Identification Survey' in HSG264. This type of survey is used to locate and describe, so far as is reasonably practicable, all asbestos containing materials (ACMs) in the building and will by its nature involve the partial destruction of the building's fabric as access is gained to all areas. A full sampling programme is undertaken to identify possible ACMs and estimate the extent of ACMs reported.

The objective of this survey report is to identify, so far as is reasonably practicable, the location, extent, product type and composition of ACMS within the building to enable the building occupants to put management and remedial procedures in place.

Document Name	Author	Issued by	Revision Number	Issue Date	Page No
2019	Emma Humphreys	Armour AS	0	13/11/2019	48

Section 7: Survey Techniques

Each floor, room and area within the scope was systematically inspected for suspect materials thought or known to contain asbestos and where such materials were encountered their location, extent, and composition were recorded.

Where materials of a similar nature exist, to those previously sampled, and a reasoned argument can be made that their composition is likely to be identical further physical sampling was not undertaken.

Photographs were taken of all sample locations, unless otherwise stated.

The analysis of suspect ACMs was undertaken by a UKAS accredited laboratory using the analytical method detailed in *HSG248, Appendix 2 -Asbestos: The analysts' guide for sampling, analysis and clearance procedures*.

Document Name	Author	Issued by	Revision Number	Issue Date	Page No
2019	Emma Humphreys	Armour AS	0	13/11/2019	49

Section 8: Survey Caveat

This report is based upon a management report inspection of an unfamiliar site. During the course of the survey all reasonable efforts were made to identify the physical presence of materials containing asbestos within the building.

A Management Survey is a non-intrusive survey, meaning that access within the fabric of the building is limited. The survey does not include access to the following areas (unless agreed beforehand with the Client and provisions are put in place):

- Within wall or ceiling construction;
- Under fixed flooring;
- Within non-openable boxings;
- Within live electrics, boilers or machinery;
- Where access/visibility is limited in an area due to stored items, furniture or services;
- Areas where there is no safe access to inspect such as floor ducts, lift shafts and loft spaces with no crawlboards;
- High level areas that are too high to safely inspect.
- Within pipework insulation throughout building as this would affect the integrity of services.

Any intrusive works carried out within the building must first be subject to a Refurbishment Asbestos Survey.

This report will be restricted to the areas that fall within the scope of works for project and will not take into account any area's that do not fall within the scope. Any asbestos that is identified within this report will need to be added to the buildings existing information and should not form the basis for a management survey. This survey will not include priority assessments nor will it include a register.

This survey considered the construction of the building, associated fixtures & fittings and associated structures and in no way should it be considered as a ground investigation report.

Services should be disconnected prior to commencement of a Management survey; however, where plant and/or electrical installations are live or appear to be live then these will not be accessed.

This survey report is not a bill of quantities.

Document Name	Author	Issued by	Revision Number	Issue Date	Page No
2019	Emma Humphreys	Armour AS	0	13/11/2019	50

Section 9: Survey Notes

This report has been written with reference to the various Guidance Notes etc, issued, and current at the date of this report and describes circumstances at the site on the date the investigation took place.

Where similar items exist in the building, only one or two samples have been taken to ascertain the material content. It was assumed that similar products were of the same material.

Any person undertaking work within the buildings should be told of the presence of asbestos. This briefing also applies to any other person associated with the site, including staff, sub-contractors and others.

The drawings in the report are not to scale and are illustrative only to indicate approximate locations. The descriptions used are for location identification purposes.

All the recommendations described in this report are based upon assumptions made after consideration of the type of material, condition of the material, its location, analysis result and type of use the area is thought to be subjected to. However, statutory authorities or others could require amendments based on local knowledge, change in legislation, change in use or indeed other conditions or criteria.

Samples taken from floor tiles (or similar material) may include a bitumen adhesive as part of the sample. It is known that some proprietary brands of bitumen have an asbestos content and this will be included as an integral part of the bulk sample unless otherwise stated.

Document Name	Author	Issued by	Revision Number	Issue Date	Page No
2019	Emma Humphreys	Armour AS	0	13/11/2019	51

Section 10: Material Assessment Algorithm

Variable	Score	Examples
Installation / Product type	1	Vinyl, 'Bakelite', Cement
	2	Asbestos insulating board, paper, rope
	3	Pipe insulation, spray coating, friable debris
Condition / damage	0	Good
	1	Slight / minor damage
	2	Moderate damage – breakage to surface treatment
	3	Major damage – smashed or exposed material
Surface treatment	0	Non-friable e.g. vinyl
	1	Enclosed insulation, encapsulated AIB
	2	Unsealed AIB, encapsulated insulation
	3	Unsealed insulation or spray coating
Asbestos type	1	Chrysotile
	2	Amosite & other amphiboles
	3	Crocidolite

The scores from each of the four sections are added together to produce a risk score:

Risk score	Risk assessment
10 or more	High risk
7 – 9	Medium risk
5 – 6	Low risk
4 & below	Negligible risk

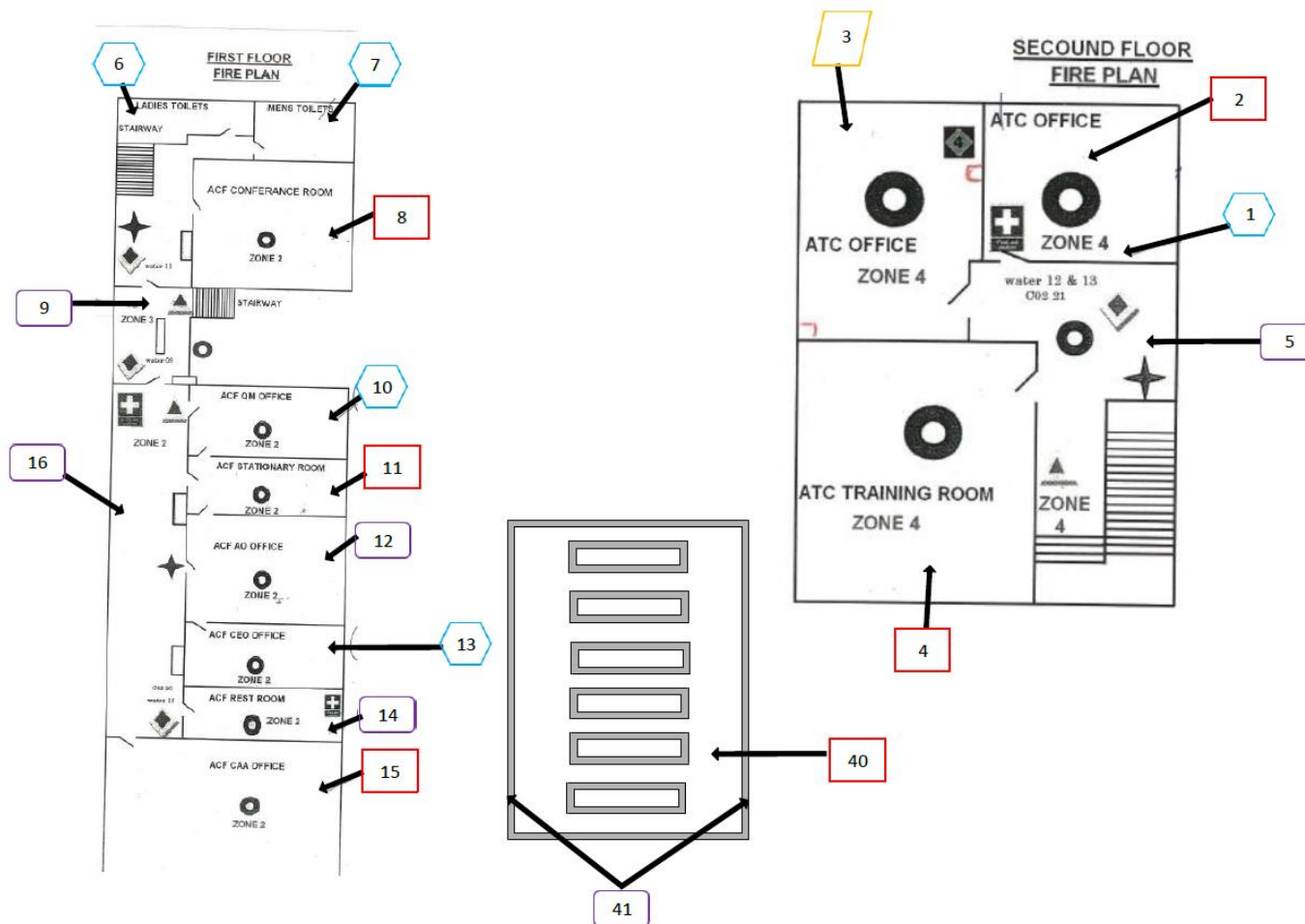
Document Name	Author	Issued by	Revision Number	Issue Date	Page No
2019	Emma Humphreys	Armour AS	0	13/11/2019	52







Section 11: Certificates of Bulk Analysis

No samples were taken during this survey

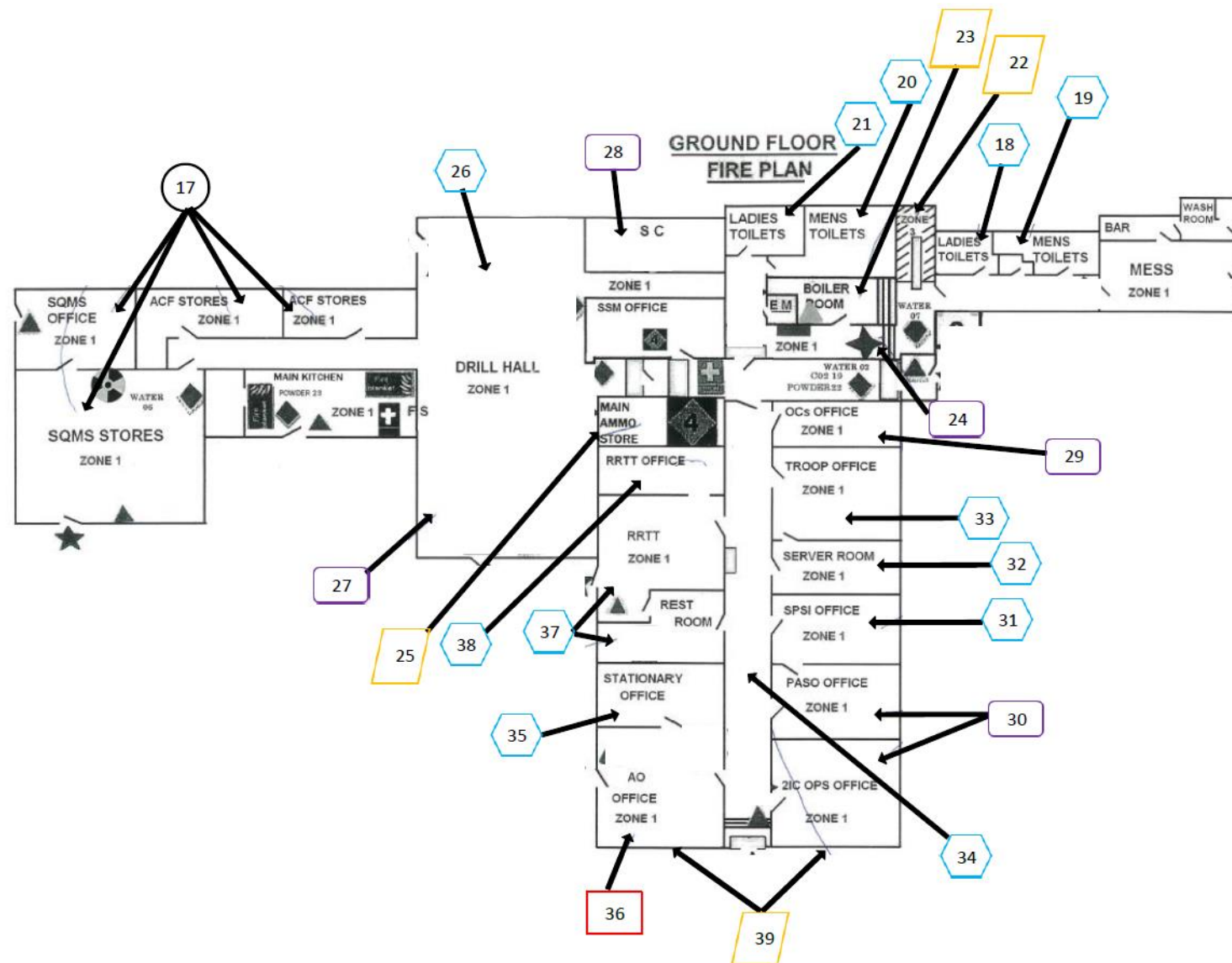
Document Name	Author	Issued by	Revision Number	Issue Date	Page No
2019	Emma Humphreys	Armour AS	0	13/11/2019	53







Section 12: Site Plan



Key	
	Visual Inspection
	Asbestos Detected (Positive Item)
	No Asbestos Detected (Negative Item)
	Presumed to Contain Asbestos
	Strongly Presumed to Contain Asbestos
	No Access

Document Name	Author	Issued by	Revision Number	Issue Date	Page No
2019	Emma Humphreys	Armour AS	0	13/11/2019	54



Key	
	Visual Inspection
	Asbestos Detected (Positive Item)
	No Asbestos Detected (Negative Item)
	Presumed to Contain Asbestos
	Strongly Presumed to Contain Asbestos
	No Access

Document Name	Author	Issued by	Revision Number	Issue Date	Page No
2019	Emma Humphreys	Armour AS	0	13/11/2019	55



ARMOUR
ANALYTICAL SERVICES

I the surveyor can confirm that this report is accurate to my findings onsite and this survey has been Content checked by myself.

Checked by: Steve Lillis

Date: 13/11/2019

I the Admin Manager can confirm that this report is accurate to the paperwork received and this survey has been quality checked by myself.

Checked by: Emma Humphreys

Date: 13.11.2019

Report Compiled By

Armour Analytical Services Ltd, Admirals Yard, Station Road, Bristol, BS34 6LR

Document Name	Author	Issued by	Revision Number	Issue Date	Page No
2019	Emma Humphreys	Armour AS	0	13/11/2019	56