

**Project Number A-00556 (3700)**

**Re-Inspection  
Asbestos Survey Report - Revised**

**Crownhill Platoon  
Crownhill  
Devon  
PL6 5EA**



Working in Partnership with Shield Services Group



Document Name	Author	Issued by	Revision Number	Issue Date	Page No
2021	David Kelly	Armour AS	1	18/10/2021	1

## **Contents**

<b>Section</b>	
<b>1</b>	<b>Contact Details</b>
<b>2</b>	<b>Executive Summary</b>
<b>3</b>	<b>Site Description &amp; Survey Information</b>
<b>4</b>	<b>Positive, Presumed or No Access Items</b>
<b>5</b>	<b>Negative Photos Sheets</b>
<b>6</b>	<b>Survey Objectives</b>
<b>7</b>	<b>Survey Notes</b>
<b>8</b>	<b>Material Assessment Algorithm</b>
<b>9</b>	<b>Certificates of Bulk Analysis</b>
<b>10</b>	<b>Site Plan</b>

Document Name	Author	Issued by	Revision Number	Issue Date	Page No
2021	David Kelly	Armour AS	1	18/10/2021	2

## **Section 1: Contact Details**

<b>Client Details:</b>		<b>Instructing Party:</b>	
Wessex RFCA Mount House Mount Street Taunton TA1 3QE		Wessex RFCA Mount House Mount Street Taunton TA1 3QE	
<b>Contact Name:</b>	Kelvin Walker	<b>Contact Name:</b>	Kelvin Walker
<b>Tel:</b> 01823 250 116	<b>Fax:</b> N/A	<b>Tel:</b> 01823 250 116	<b>Fax:</b> N/A

<b>Site Address:</b>		<b>Report Author:</b>	
Crownhill Platoon Crownhill Devon PL6 5EA		Armour Analytical Services Admirals Yard Station Road Bristol BS34 6LR	
<b>Contact Name:</b>	Kelvin Walker	<b>Contact Name:</b>	Andrea Bansee
<b>Tel:</b> 01823 250116	<b>Fax:</b> N/A	<b>Mobile:</b> 07468 535 836	

<b>Lead Surveyor's Name:</b>	<b>Lead Surveyor's Authorising Signature:</b>
David Kelly	

Document Name	Author	Issued by	Revision Number	Issue Date	Page No
2021	David Kelly	Armour AS	1	18/10/2021	3



## **Section 2: Executive Summary**

No samples were taken during this survey.

The following items have been either been "Strongly Presumed" To Contain Asbestos or "Presumed" to Contain Asbestos as they were either visually identified in being so, labelled after previously being sampled on prior surveys or not accessible at the time of the survey:

Status	Sample Type	Location
Previously Sampled	Floor Tiles and Adhesive - Vinyl Products	Ground Floor Office 004
Previously Sampled	Floor Tiles and Adhesive - Vinyl Products	Ground Floor Armoury 005
Previously Sampled	Floor Tiles and Adhesive - Vinyl Products	Ground Floor Ladies WC 006
Presumed	Toilet Seats - PVC / Reinforced Plastics	Ground Floor Ladies and Men's WC 007
Previously Sampled	Toilet Cisterns - PVC / Reinforced Plastics	Ground Floor Ladies and Men's WC 008
Presumed	Electrical Box - Gaskets (rope/woven)	Ground Floor Classroom 1 009
Previously Sampled	Profiled Roof - Cement Product	External Roof 001
Previously Sampled	Roof Edging - Cement Product	External Roof 002

The presence of asbestos in these areas cannot be ascertained at this time. If any works are to be carried out in these areas in the future, then these works should be approached cautiously.

In accordance with current legislation, any suspect materials encountered in these areas are to be assumed to contain asbestos until proven otherwise. This will normally involve cessation of works in the affected area.

Document Name	Author	Issued by	Revision Number	Issue Date	Page No
2021	David Kelly	Armour AS	1	18/10/2021	4

## **Section 3: Site Description & Survey Information**

### **Brief description on the general building construction**

Blockwork construction with a pitched profiled cement roof.

### **Caveat for no access areas**

All areas accessed.

### **EXTERNAL MATERIALS**

Roof Type	Pitched
Roof Materials	Profiled Cement
Soffits	Timber
Fascia	Timber
Walls	Blockwork
Verge Under cloaking	N/A
Guttering	Plastic
Downpipes	Plastic
Window/Door frames	UPVC
Other Materials	Cement Roof Edging

### **INTERNAL MATERIALS**

Loft Insulation	N/A
Roof Underlining	N/A
Ceilings	Plasterboard
Walls <i>Internal</i>	Plasterboard, Block, Timber
Floors	Timber
Doors/Frames	Timber
Pipework/Insulation	Metal/MMMF
Boxings	None
Boiler Make	Modern
Flue Pipes	Metal
Storage Heaters	Radiators
Electrical Boxes/Machinery	No access
Ducting/Risers	N/A
Stairs	None
Lift Shafts	None
Other Materials	N/A

Document Name	Author	Issued by	Revision Number	Issue Date	Page No
2021	David Kelly	Armour AS	1	18/10/2021	5

## Section 4: Positive, Presumed or No Access Items

<b>Item No:</b>	<b>1</b>	<b>Sample No:</b>	<b>N/A</b>
<b>Location:</b>	External - Roof 001		



<b>Material Description:</b>	Profiled Roof - Cement Product	
<b>Identification:</b>	Previously Sampled - Asbestos Detected	
<b>Approx. quantity:</b>	160 m <sup>2</sup>	
<b>Accessibility</b>	Difficult	Assessment Score
<b>Product type:</b>	Cement	1
<b>Extent of Damage:</b>	Slight / minor damage	1
<b>Surface Treatment:</b>	Unsealed Cement	1
<b>Asbestos type:</b>	Chrysotile	1
<b>Material Assessment Score:</b>		4
<b>Priority Assessment Score:</b>		Negligible
<b>Action:</b>	Manage	
<b>Comments:</b>	Previously sampled ref: Armour 10/10/19 Sample DK/1	

Document Name	Author	Issued by	Revision Number	Issue Date	Page No
2021	David Kelly	Armour AS	1	18/10/2021	6



**Item No:** 2 **Sample No:** N/A

**Location:** External - Roof 002



<b>Material Description:</b>	Roof Edging - Cement Product	
<b>Identification:</b>	Previously Sampled - Asbestos Detected	
<b>Approx. quantity:</b>	16 LM	
<b>Accessibility</b>	Difficult	<i>Assessment Score</i>
<b>Product type:</b>	Cement	1
<b>Extent of Damage:</b>	Slight / minor damage	1
<b>Surface Treatment:</b>	Unsealed Cement	1
<b>Asbestos type:</b>	Chrysotile	1
<b>Material Assessment Score:</b>		4
<b>Priority Assessment Score:</b>		Negligible
<b>Action:</b>	Manage	
<b>Comments:</b>	Previously sampled ref: Armour 10/10/19 Sample DK/2	

Document Name	Author	Issued by	Revision Number	Issue Date	Page No
2021	David Kelly	Armour AS	1	18/10/2021	7

**Item No:** 3 **Sample No:** N/A

**Location:** Ground Floor - Store B 003



<b>Material Description:</b>	Floor Tiles and Adhesive	
<b>Identification:</b>	Previously Sampled – Asbestos Detected	
<b>Approx. quantity:</b>	6m2	
<b>Accessibility</b>	Easy	Assessment Score
<b>Product type:</b>	Vinyl	1
<b>Extent of Damage:</b>	Slight/minor damage	1
<b>Surface Treatment:</b>	Non-Friable	0
<b>Asbestos type:</b>	Chrysotile	1
<b>Material Assessment Score:</b>		3
<b>Priority Assessment Score:</b>		Negligible
<b>Action:</b>	Manage	
<b>Comments:</b>	Previously a no accessed area, now accessed. Previously sampled ref: Armour 10/10/2019 Sample DK/3	

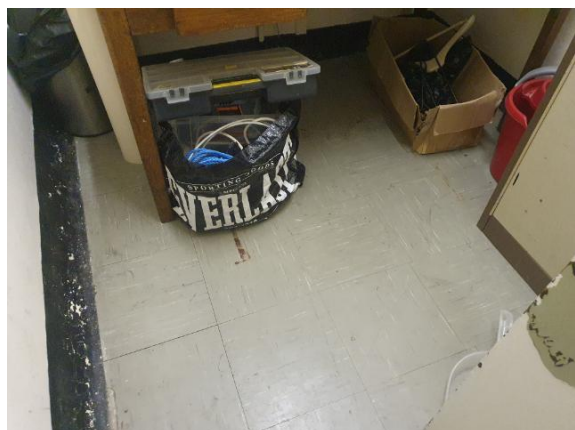
Document Name	Author	Issued by	Revision Number	Issue Date	Page No
2021	David Kelly	Armour AS	1	18/10/2021	8



**Item No:** 4

**Sample No:** N/A

**Location:** Ground Floor - Office 004

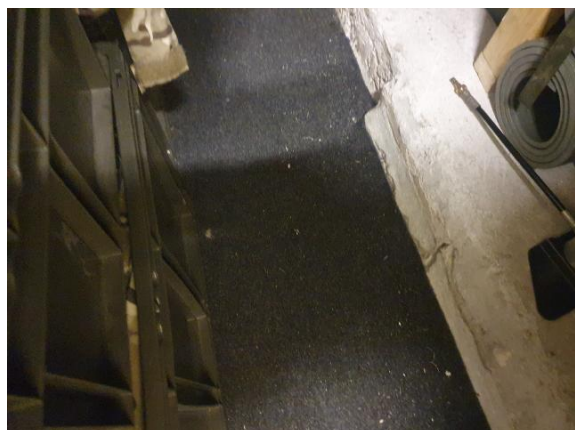


<b>Material Description:</b>	Floor Tiles and Adhesive - Vinyl Products	
<b>Identification:</b>	Previously Sampled - Asbestos Detected	
<b>Approx. quantity:</b>	6 m <sup>2</sup>	
<b>Accessibility</b>	Easy	Assessment Score
<b>Product type:</b>	Vinyl	1
<b>Extent of Damage:</b>	Slight / minor damage	1
<b>Surface Treatment:</b>	Non-friable	0
<b>Asbestos type:</b>	Chrysotile	1
<b>Material Assessment Score:</b>		3
<b>Priority Assessment Score:</b>		Negligible
<b>Action:</b>	Manage	
<b>Comments:</b>	Previously sampled ref: Armour 10/10/19 Sample DK/3	

Document Name	Author	Issued by	Revision Number	Issue Date	Page No
2021	David Kelly	Armour AS	1	18/10/2021	9

**Item No:** 5 **Sample No:** N/A

**Location:** Ground Floor - Armoury 005



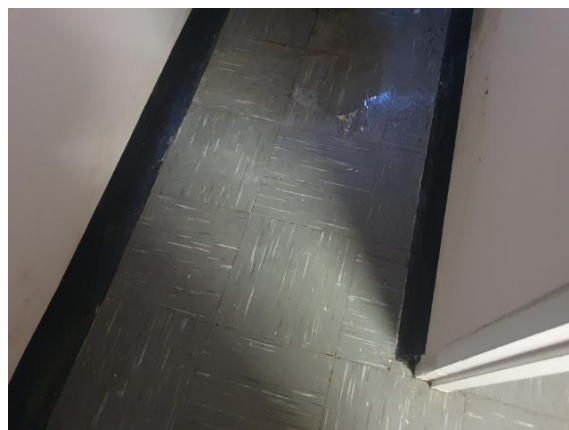
<b>Material Description:</b>	Floor Tiles and Adhesive - Vinyl Products	
<b>Identification:</b>	Previously Sampled - Asbestos Detected	
<b>Approx. quantity:</b>	2 m <sup>2</sup>	
<b>Accessibility</b>	Difficult	<i>Assessment Score</i>
<b>Product type:</b>	Vinyl	1
<b>Extent of Damage:</b>	Slight / minor damage	1
<b>Surface Treatment:</b>	Non-friable	0
<b>Asbestos type:</b>	Chrysotile	1
<b>Material Assessment Score:</b>		3
<b>Priority Assessment Score:</b>		Negligible
<b>Action:</b>	Manage	
<b>Comments:</b>	Previously sampled ref: Armour 10/10/19 Sample DK/4. Under carpet	

Document Name	Author	Issued by	Revision Number	Issue Date	Page No
2021	David Kelly	Armour AS	1	18/10/2021	10

**Item No:** 6

**Sample No:** N/A

**Location:** Ground Floor - Ladies WC 006



<b>Material Description:</b>	Floor Tiles and Adhesive - Vinyl Products	
<b>Identification:</b>	Previously Sampled - Asbestos Detected	
<b>Approx. quantity:</b>	6 m <sup>2</sup>	
<b>Accessibility</b>	Difficult	<i>Assessment Score</i>
<b>Product type:</b>	Vinyl	1
<b>Extent of Damage:</b>	Slight / minor damage	1
<b>Surface Treatment:</b>	Non-friable	0
<b>Asbestos type:</b>	Chrysotile	1
<b>Material Assessment Score:</b>		3
<b>Priority Assessment Score:</b>		Negligible
<b>Action:</b>	Manage	
<b>Comments:</b>	Previously sampled ref: Armour 10/10/19 Sample DK/3	

Document Name	Author	Issued by	Revision Number	Issue Date	Page No
2021	David Kelly	Armour AS	1	18/10/2021	11

**Item No:** 7 **Sample No:** N/A

**Location:** Ground Floor - Ladies and Men's WC 007



<b>Material Description:</b>	Toilet Seats - PVC / Reinforced Plastics	
<b>Identification:</b>	Presumed to Contain Asbestos	
<b>Approx. quantity:</b>	3 no	
<b>Accessibility</b>	Easy	<i>Assessment Score</i>
<b>Product type:</b>	Bakelite	1
<b>Extent of Damage:</b>	Major damage	3
<b>Surface Treatment:</b>	Unsealed Insulation	3
<b>Asbestos type:</b>	Chrysotile	1
<b>Material Assessment Score:</b>		8
<b>Priority Assessment Score:</b>		Medium
<b>Action:</b>	Manage	
<b>Comments:</b>	Not possible to sample as may damage integrity of seats	

Document Name	Author	Issued by	Revision Number	Issue Date	Page No
2021	David Kelly	Armour AS	1	18/10/2021	12

**Item No:** 8 **Sample No:** N/A

**Location:** Ground Floor - Ladies and Men's WC 008

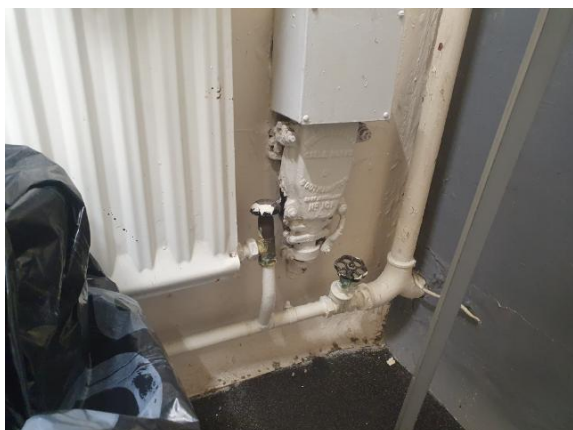


<b>Material Description:</b>	Toilet Cisterns - PVC / Reinforced Plastics	
<b>Identification:</b>	Previously Sampled - Asbestos Detected	
<b>Approx. quantity:</b>	2 no	
<b>Accessibility</b>	Medium	<i>Assessment Score</i>
<b>Product type:</b>	Bakelite	1
<b>Extent of Damage:</b>	Slight / minor damage	1
<b>Surface Treatment:</b>	Non-friable	0
<b>Asbestos type:</b>	Chrysotile	1
<b>Material Assessment Score:</b>		3
<b>Priority Assessment Score:</b>		Negligible
<b>Action:</b>	Manage	
<b>Comments:</b>	Previously sampled ref: Armour 10/10/19 Sample DK/5	

Document Name	Author	Issued by	Revision Number	Issue Date	Page No
2021	David Kelly	Armour AS	1	18/10/2021	13

**Item No:** 9 **Sample No:** N/A

**Location:** Ground Floor - Classroom 1 009



<b>Material Description:</b>	Electrical Box - Gaskets (rope/woven)	
<b>Identification:</b>	Presumed to Contain Asbestos	
<b>Approx. quantity:</b>	1 no	
<b>Accessibility</b>	Difficult	<i>Assessment Score</i>
<b>Product type:</b>	Rope	2
<b>Extent of Damage:</b>	Major damage	3
<b>Surface Treatment:</b>	Unsealed Insulation	3
<b>Asbestos type:</b>	Chrysotile	1
<b>Material Assessment Score:</b>		9
<b>Priority Assessment Score:</b>		N/A
<b>Action:</b>	Manage	
<b>Comments:</b>	No access within live electrical box	

Document Name	Author	Issued by	Revision Number	Issue Date	Page No
2021	David Kelly	Armour AS	1	18/10/2021	14





## **Section 5: Negative Items**

No negative items were found during this survey.

Document Name	Author	Issued by	Revision Number	Issue Date	Page No
2021	David Kelly	Armour AS	1	18/10/2021	15



## **Section 6: Survey Objectives**

Instructions were received from Kelvin Walker of Wessex RFCA to carry out a Re-Inspection asbestos survey at Crownhill Platoon, Crownhill, Devon, PL6 5EA in accordance with HSG264 and Armour Analytical's quality procedures.

The survey was carried out on 25 February 2021 by David Kelly with the objective of facilitating a Re-Inspection report.

Survey, with the objective of accessing previously no accessed areas was carried out on 15<sup>th</sup> October 2021 by David Kelly.

Document Name	Author	Issued by	Revision Number	Issue Date	Page No
2021	David Kelly	Armour AS	1	18/10/2021	16



## **Section 7: Survey Notes**

This report has been written with reference to the various Guidance Notes etc, issued, and current at the date of this report and describes circumstances at the site on the date the investigation took place.

Where similar items exist in the building, only one or two samples may have been taken to ascertain the material content. It was assumed that similar products were of the same material.

Any person undertaking work within the buildings should be told of the presence of asbestos. This briefing also applies to any other person associated with the site, including staff, sub-contractors and others.

The drawings in the report are not to scale and are illustrative only to indicate approximate locations. The descriptions used are for location identification purposes.

All the recommendations described in this report are based upon assumptions made after consideration of the type of material, condition of the material, its location, analysis result and type of use the area is thought to be subjected to. However, statutory authorities or others could require amendments based on local knowledge, change in legislation, change in use or indeed other conditions or criteria.

Samples taken from floor tiles (or similar material) may include a bitumen adhesive as part of the sample. It is known that some proprietary brands of bitumen have an asbestos content and this will be included as an integral part of the bulk sample unless otherwise stated.

**Due to the artex being non-homogenous, it is recommended to treat all areas as containing asbestos if you have a positive sample of artex.**

Document Name	Author	Issued by	Revision Number	Issue Date	Page No
2021	David Kelly	Armour AS	1	18/10/2021	17

## Section 8: Material Assessment Algorithm

Variable	Score	Examples
Product type	1	Vinyl, 'Bakelite', Cement, Textured Coating, Non-Friable Debris, Floor Tiles, Bitumen, Reinforced Plastics, Mastic (putty), Windowsills
	2	Asbestos Insulating Board, Paper, Rope, Burned Cement Debris, Flashguards, Gaskets
	3	Pipe Insulation, Spray Coating, Friable Debris, Loose Fill Asbestos
Condition / Damage	0	Good
	1	Slight / Minor Damage
	2	Moderate Damage – Breakage to Surface Treatment
	3	Major Damage – Smashed or Exposed Material
Surface Treatment	0	Non-Friable E.G. Vinyl
	1	Enclosed Insulation, Encapsulated AIB, Unsealed Cement, Woven Material, Paper
	2	Unsealed AIB, Encapsulated Insulation, Encapsulated Pipe Lagging
	3	Unsealed Insulation, Spray Coating, Unsealed Pipe Lagging
Asbestos Type	1	Chrysotile
	2	Amosite & Other Amphiboles
	3	Crocidolite

The scores from each of the four sections are added together to produce a risk score:

Risk score	Risk assessment
<b>10 or more</b>	High risk
<b>7 – 9</b>	Medium risk
<b>5 – 6</b>	Low risk
<b>4 &amp; below</b>	Negligible risk

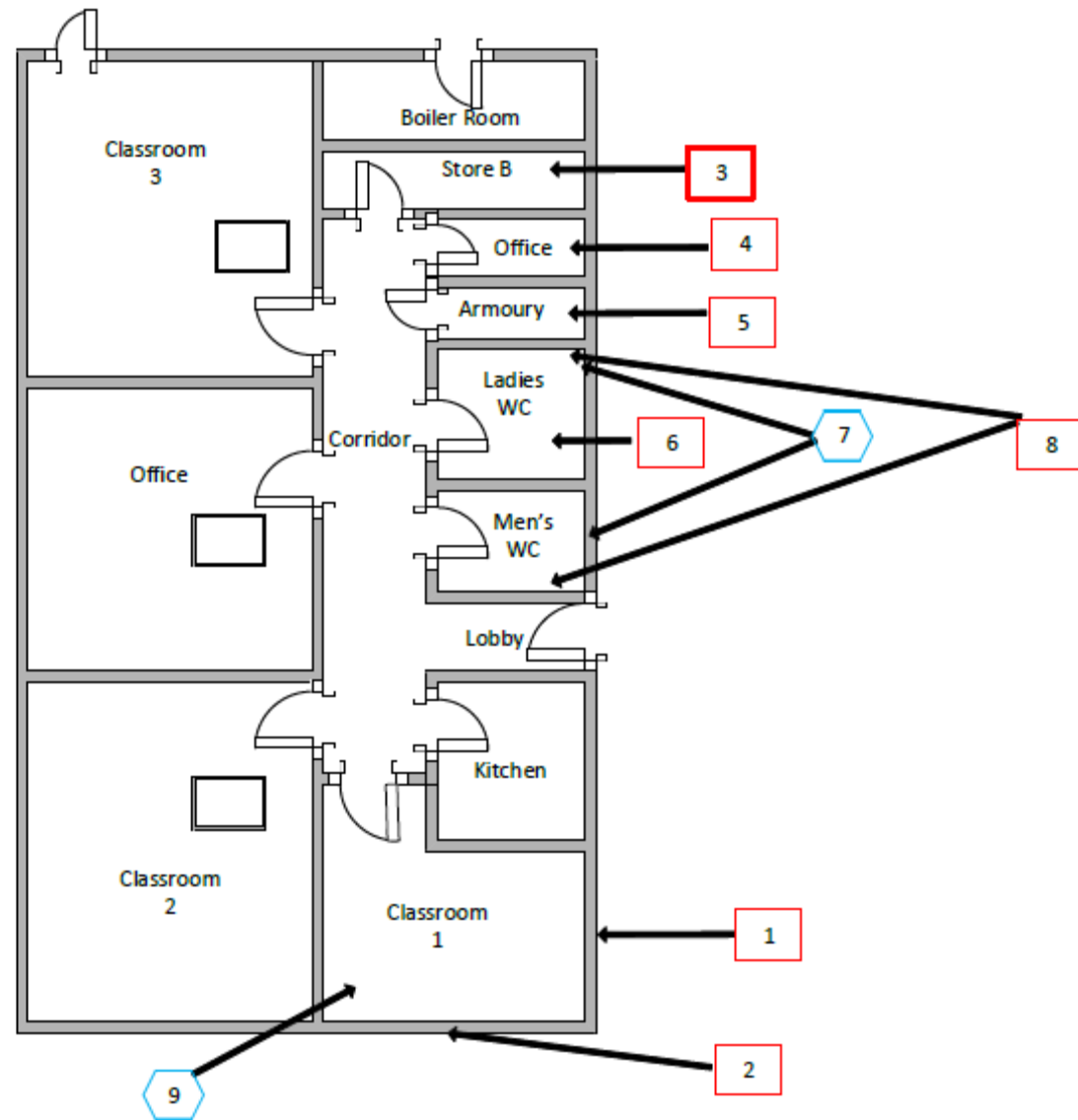








## **Section 9: Certificates of Bulk Analysis**

No samples were taken during this survey.

Document Name	Author	Issued by	Revision Number	Issue Date	Page No
2021	David Kelly	Armour AS	1	18/10/2021	19

## Section 10: Site Plan



Key	
	Visual Inspection
	Asbestos Detected (Positive Item)
	No Asbestos Detected (Negative Item)
	Presumed to Contain Asbestos
	Strongly Presumed to Contain Asbestos
	No Access

Document Name	Author	Issued by	Revision Number	Issue Date	Page No
2021	David Kelly	Armour AS	1	18/10/2021	20





**I the surveyor can confirm that this report is accurate to my findings onsite and this survey has been Content checked by myself.**

**Checked by: Will Fyles**

**Date: 18/10/2021**

**I the Admin Manager can confirm that this report is accurate to the paperwork received and this survey has been quality checked by myself.**

**Checked by: Andrea Bansee**

**Date: 18/10/2021**

**Report Compiled By**

**Armour Analytical Services Ltd, Admirals Yard, Station Road, Bristol, BS34 6LR**

Document Name	Author	Issued by	Revision Number	Issue Date	Page No
2021	David Kelly	Armour AS	1	18/10/2021	21