



**ARMOUR**  
ANALYTICAL SERVICES

**Project Number 2481**

**Management  
Asbestos Survey Report**

**Chard Platoon, Somerset, TA20 1AE**



*Working in Partnership with Shield Environmental Services*



Document Name	Author	Issued by	Revision Number	Issue Date	Page No
2019	Emma Humphreys	Armour AS	0	27/08/2019	1

## Contents

<b>Section</b>	
<b>1</b>	<b>Contacts &amp; Authorisation</b>
<b>2</b>	<b>Executive Summary</b>
<b>3</b>	<b>Site Description &amp; Survey Information</b>
<b>4</b>	<b>Positive and Presumed Photos Sheets</b>
<b>5</b>	<b>Negative Photos Sheets</b>
<b>6</b>	<b>Survey Objectives</b>
<b>7</b>	<b>Survey Techniques</b>
<b>8</b>	<b>Survey Caveat</b>
<b>9</b>	<b>Survey Notes</b>
<b>10</b>	<b>Material Assessment Algorithm</b>
<b>11</b>	<b>Certificates of Bulk Analysis</b>
<b>12</b>	<b>Site Plan</b>

Document Name	Author	Issued by	Revision Number	Issue Date	Page No
2019	Emma Humphreys	Armour AS	0	27/08/2019	2



## **Section 1: Contact Details**

<b>Client Details:</b>		<b>Instructing Party:</b>	
Wessex RFCA Mount House Mount Street Taunton TA1 3QE		Shield Environmental Shield House Caxton Business Park Crown Way Bristol BS30 8XJ	
<b>Contact Name:</b>	Sue Morrell	<b>Contact Name:</b>	Chloe Smith
<b>Tel:</b> 01823250115	<b>Fax:</b> N/A	<b>Tel:</b> 01173012650	<b>Fax:</b> N/A

<b>Site Address:</b>		<b>Report Author:</b>	
Wyvern Barracks Barrack Road Exeter Devon EX2 6AE		Armour Analytical Services Admirals Yard Station Road Bristol BS34 6LR	
<b>Contact Name:</b>	Kevin Taylor	<b>Contact Name:</b>	David Kelly
<b>Tel:</b> 07506197529	<b>Fax:</b> N/A	<b>Mobile:</b> 07769707519	

<b>Lead Surveyor's Name:</b>	<b>Lead Surveyor's Authorising Signature:</b>
D. Kelly	

Document Name	Author	Issued by	Revision Number	Issue Date	Page No
2019	Emma Humphreys	Armour AS	0	27/08/2019	3

## **Section 2: Executive Summary**

Sample Number	Sample Type	Location	Analysis
1	Felt to Underside of Roof	Corridor and Loft Space	N.A.D.I.S
2	Textile Packers Under Roof Bracket	Corridor Loft Space	N.A.D.I.S
3	Reinforced Plastic Toilet Cistern	WC and Washroom – First Floor	Amosite
4	Floor Tiles and Adhesive	Mess Room – Ground Floor	Chrysotile
5	Floor Tiles	Store – Ground Floor	N.A.D.I.S

N.A.D.I.S – No Asbestos Detected in Sample

A.D – Asbestos Detected

The following items have been Presumed to be Asbestos Containing Materials as they were not accessible at the time of the survey:

Item 4 – Offices – First Floor – Fireplace Panels – No access without damage to the panel  
 Item 11 – WC and Washroom – First Floor – Toilet Seat – No sample possible without damage  
 Item 15 – Mess Room - Fireplace Panels – No access without damage to the panel

The presence of asbestos in these areas cannot be ascertained at this time. If any works are to be carried out in these areas in the future, then these works should be approached cautiously.

In accordance with current legislation, any suspect materials encountered in these areas are to be assumed to contain asbestos until proven otherwise. This will normally involve cessation of works in the affected area.

Document Name	Author	Issued by	Revision Number	Issue Date	Page No
2019	Emma Humphreys	Armour AS	0	27/08/2019	4

## **Section 3: Site Description & Survey Information**

### **Brief description on the general building construction**

Brick and Block Construction with a pitched tiled roof.

### **Caveat for no access areas**

No access behind fireplace panels without damaging panels.

### **EXTERNAL MATERIALS**

Roof Type	Pitched, Flat
Roof Materials	Ceramic Tiles, Felt
Soffits	Timber
Fascia	Timber, UPVC
Walls	Brick
Verge Under cloaking	N/A
Guttering	Plastic, Metal
Downpipes	Plastic, Metal
Window/Door frames	Timber, UPVC
Other Materials	N/A

### **INTERNAL MATERIALS**

Loft Insulation	Fiberglass
Roof Underlining	Non-Asbestos Felt
Ceilings	Plasterboard, Lath and Plaster, Wood, Concrete
Walls <i>Internal</i>	Plasterboard, Lath and Plaster, Brick
Floors	Tiles, Carpet, Timber, Screed
Doors/Frames	Timber, Metal
Pipework/Insulation	Armaflex, Hessian
Boxings	Timber
Boiler Make	N/A
Flue Pipes	N/A
Storage Heaters	Modern Electrical Heater
Electrical Boxes/Machinery	Modern
Ducting/Risers	N/A
Stairs	Screed
Lift Shafts	N/A
Other Materials	N/A

Document Name	Author	Issued by	Revision Number	Issue Date	Page No
2019	Emma Humphreys	Armour AS	0	27/08/2019	5



## **Section 4: Positive and Presumed Photos Sheets**

**Item No: 4**

**Sample No: N/A**

**Location: Offices x 2 – First Floor**



<b>Material Description:</b>	No access behind Timber Fireplace Panels	
<b>Identification:</b>	Presumed to Contain Asbestos	
<b>Approx. quantity:</b>	X 2 Fireplaces	
<b>Accessibility</b>	Low	<i>Assessment Score</i>
<b>Product type:</b>	No Access	2
<b>Extent of Damage:</b>	No Access	2
<b>Surface Treatment:</b>	No Access	2
<b>Asbestos type:</b>	No Access	2
<b>Material Assessment Score:</b>		8
<b>Priority Assessment Score:</b>		Medium
<b>Action:</b>	Manage	
<b>Comments:</b>	No access without causing damage to the panel	

Document Name	Author	Issued by	Revision Number	Issue Date	Page No
2019	Emma Humphreys	Armour AS	0	27/08/2019	6

**Item No: 10****Sample No: 3****Location: WC and Washroom – First Floor**

<b>Material Description:</b>	Reinforced Plastic Toilet Cistern	
<b>Identification:</b>	Sampled – Asbestos Detected	
<b>Approx. quantity:</b>	X 1 Cistern	
<b>Accessibility</b>	Medium	<i>Assessment Score</i>
<b>Product type:</b>	Composite	1
<b>Extent of Damage:</b>	Minor	1
<b>Surface Treatment:</b>	Non-Friable	0
<b>Asbestos type:</b>	Amosite	2
<b>Material Assessment Score:</b>		4
<b>Priority Assessment Score:</b>		Negligible
<b>Action:</b>	Manage	
<b>Comments:</b>	N/A	

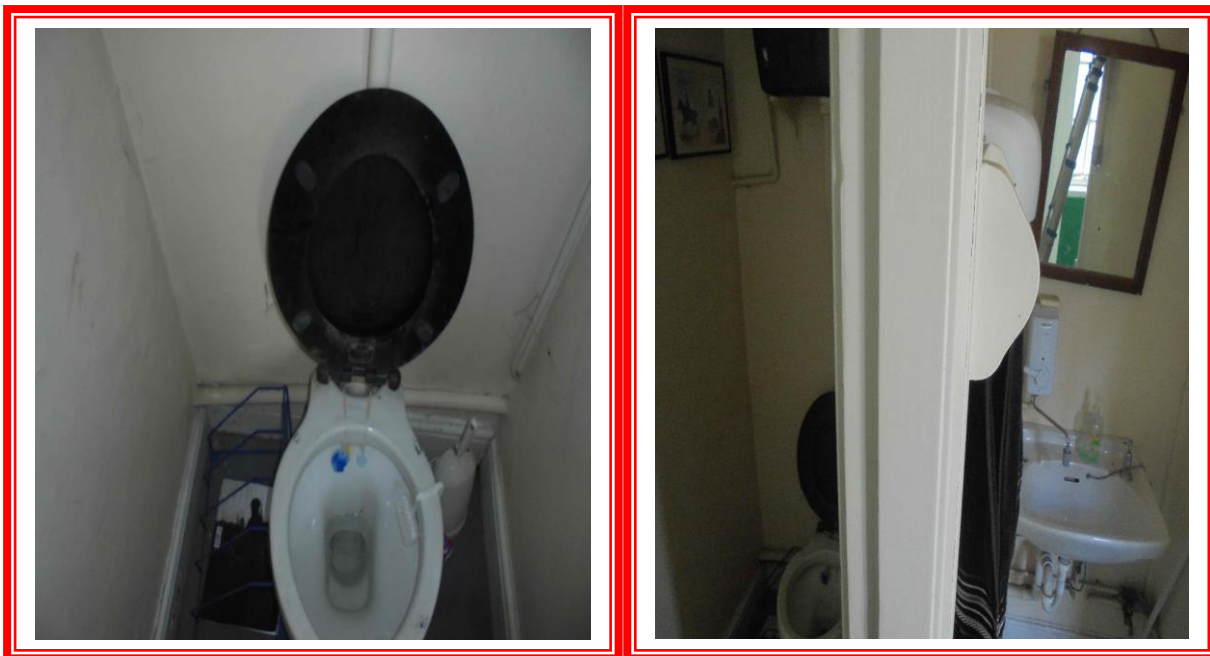
Document Name	Author	Issued by	Revision Number	Issue Date	Page No
2019	Emma Humphreys	Armour AS	0	27/08/2019	7



**Item No: 11**

**Sample No: N/A**

**Location: WC and Washroom – First Floor**



<b>Material Description:</b>	Reinforced Plastic Toilet Seat	
<b>Identification:</b>	Presumed to Contain Asbestos	
<b>Approx. quantity:</b>	X 1 Seat	
<b>Accessibility</b>	High	<i>Assessment Score</i>
<b>Product type:</b>	Composite	1
<b>Extent of Damage:</b>	Minor	1
<b>Surface Treatment:</b>	Non-Friable	0
<b>Asbestos type:</b>	Amosite	2
<b>Material Assessment Score:</b>		4
<b>Priority Assessment Score:</b>		Negligible
<b>Action:</b>	Manage	
<b>Comments:</b>	Not samples as it would damage the integrity of the seat	

Document Name	Author	Issued by	Revision Number	Issue Date	Page No
2019	Emma Humphreys	Armour AS	0	27/08/2019	8



**Item No: 14**

**Sample No: 4**

**Location: Mess Room – Ground Floor**



<b>Material Description:</b>	Floor Tiles and Adhesive	
<b>Identification:</b>	Sampled – Asbestos Detected	
<b>Approx. quantity:</b>	40M2	
<b>Accessibility</b>	High	Assessment Score
<b>Product type:</b>	Composite	1
<b>Extent of Damage:</b>	Moderate	2
<b>Surface Treatment:</b>	Non-Friable	0
<b>Asbestos type:</b>	Chrysotile	1
<b>Material Assessment Score:</b>		4
<b>Priority Assessment Score:</b>		Negligible
<b>Action:</b>	Manage	
<b>Comments:</b>	N/A	

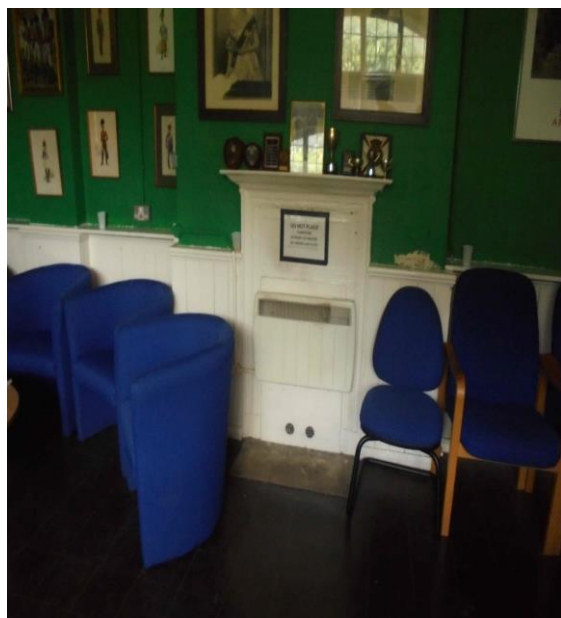
Document Name	Author	Issued by	Revision Number	Issue Date	Page No
2019	Emma Humphreys	Armour AS	0	27/08/2019	9



**Item No: 15**

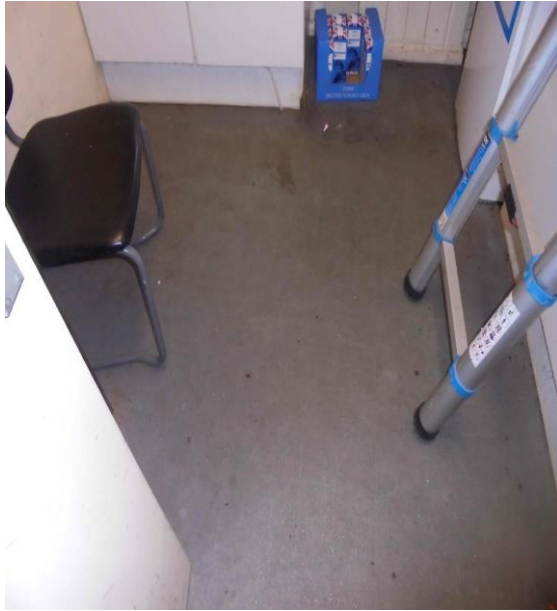
**Sample No: N/A**

**Location: Mess Room – Ground Floor**



<b>Material Description:</b>	No Access Behind Panel to Fireplace	
<b>Identification:</b>	Presumed to Contain Asbestos	
<b>Approx. quantity:</b>	X 1 Fireplace	
<b>Accessibility</b>	Low	Assessment Score
<b>Product type:</b>	No Access	2
<b>Extent of Damage:</b>	No Access	2
<b>Surface Treatment:</b>	No Access	2
<b>Asbestos type:</b>	No Access	2
<b>Material Assessment Score:</b>		8
<b>Priority Assessment Score:</b>		Medium
<b>Action:</b>	Manage	
<b>Comments:</b>	No Access without irreparable damage to panel	

Document Name	Author	Issued by	Revision Number	Issue Date	Page No
2019	Emma Humphreys	Armour AS	0	27/08/2019	10

**Item No: 16****Sample No: N/A****Location: Kitchen – Ground Floor**

<b>Material Description:</b>	Floor Tiles and Adhesive	
<b>Identification:</b>	As Per Sample DK/4 – Asbestos Detected	
<b>Approx. quantity:</b>	9M2	
<b>Accessibility</b>	Low	<i>Assessment Score</i>
<b>Product type:</b>	Composite	1
<b>Extent of Damage:</b>	Minor	1
<b>Surface Treatment:</b>	Non-Friable	0
<b>Asbestos type:</b>	Chrysotile	1
<b>Material Assessment Score:</b>		3
<b>Priority Assessment Score:</b>		Negligible
<b>Action:</b>	Manage	
<b>Comments:</b>	Located under lino, visible under kitchen units	

Document Name	Author	Issued by	Revision Number	Issue Date	Page No
2019	Emma Humphreys	Armour AS	0	27/08/2019	11



## Section 5: Negative Photos Sheets

**Item No: 1**

**Sample No: N/A**

**Location: External**



<b>Material Description:</b>	Visual Inspection – No Suspect Materials Found	
<b>Identification:</b>	N/A	
<b>Approx. quantity:</b>	N/A	
<b>Accessibility</b>	N/A	<i>Assessment Score</i>
<b>Product type:</b>		N/A
<b>Extent of Damage:</b>		N/A
<b>Surface Treatment:</b>		N/A
<b>Asbestos type:</b>		N/A
<b>Material Assessment Score:</b>		N/A
<b>Priority Assessment Score:</b>		N/A
<b>Action:</b>	N/A	
<b>Comments:</b>	N/A	

Document Name	Author	Issued by	Revision Number	Issue Date	Page No
2019	Emma Humphreys	Armour AS	0	27/08/2019	12



**Item No: 2**

**Sample No: N/A**

**Location: Armoury – Ground Floor**



<b>Material Description:</b>	Visual Inspection – No Suspect Materials Found	
<b>Identification:</b>	N/A	
<b>Approx. quantity:</b>	N/A	
<b>Accessibility</b>	N/A	<i>Assessment Score</i>
<b>Product type:</b>		N/A
<b>Extent of Damage:</b>		N/A
<b>Surface Treatment:</b>		N/A
<b>Asbestos type:</b>		N/A
<b>Material Assessment Score:</b>		N/A
<b>Priority Assessment Score:</b>		N/A
<b>Action:</b>	N/A	
<b>Comments:</b>	No access above metal ceiling	

Document Name	Author	Issued by	Revision Number	Issue Date	Page No
2019	Emma Humphreys	Armour AS	0	27/08/2019	13



**Item No: 3**

**Sample No: N/A**

**Location: Garage**



<b>Material Description:</b>	Visual Inspection – No Suspect Materials Found	
<b>Identification:</b>	N/A	
<b>Approx. quantity:</b>	N/A	
<b>Accessibility</b>	N/A	<i>Assessment Score</i>
<b>Product type:</b>		N/A
<b>Extent of Damage:</b>		N/A
<b>Surface Treatment:</b>		N/A
<b>Asbestos type:</b>		N/A
<b>Material Assessment Score:</b>		N/A
<b>Priority Assessment Score:</b>		N/A
<b>Action:</b>	N/A	
<b>Comments:</b>	Limited access to inspect due to stored items	

Document Name	Author	Issued by	Revision Number	Issue Date	Page No
2019	Emma Humphreys	Armour AS	0	27/08/2019	14



**Item No: 5**

**Sample No: N/A**

**Location: Loft Space**



<b>Material Description:</b>	Visual Inspection – No Suspect Materials Found	
<b>Identification:</b>	N/A	
<b>Approx. quantity:</b>	N/A	
<b>Accessibility</b>	N/A	<i>Assessment Score</i>
<b>Product type:</b>		N/A
<b>Extent of Damage:</b>		N/A
<b>Surface Treatment:</b>		N/A
<b>Asbestos type:</b>		N/A
<b>Material Assessment Score:</b>		N/A
<b>Priority Assessment Score:</b>		N/A
<b>Action:</b>	N/A	
<b>Comments:</b>	Limited access into loft space due to height of hatch	

Document Name	Author	Issued by	Revision Number	Issue Date	Page No
2019	Emma Humphreys	Armour AS	0	27/08/2019	15

**Item No: 6****Sample No: N/A****Location: Classroom – First Floor**

<b>Material Description:</b>	Visual Inspection – No Suspect Materials Found	
<b>Identification:</b>	N/A	
<b>Approx. quantity:</b>	N/A	
<b>Accessibility</b>	N/A	<i>Assessment Score</i>
<b>Product type:</b>		N/A
<b>Extent of Damage:</b>		N/A
<b>Surface Treatment:</b>		N/A
<b>Asbestos type:</b>		N/A
<b>Material Assessment Score:</b>		N/A
<b>Priority Assessment Score:</b>		N/A
<b>Action:</b>	N/A	
<b>Comments:</b>	No access within timber boxing	

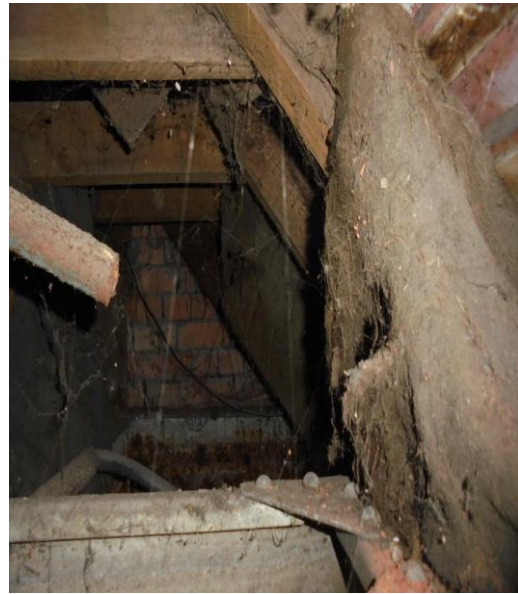
Document Name	Author	Issued by	Revision Number	Issue Date	Page No
2019	Emma Humphreys	Armour AS	0	27/08/2019	16



**Item No: 7**

**Sample No: 1**

**Location: Corridor Loft Space**



<b>Material Description:</b>	Felt to Underside of Roof	
<b>Identification:</b>	Sampled – No Asbestos Detected	
<b>Approx. quantity:</b>	10M2	
<b>Accessibility</b>	N/A	<i>Assessment Score</i>
<b>Product type:</b>		N/A
<b>Extent of Damage:</b>		N/A
<b>Surface Treatment:</b>		N/A
<b>Asbestos type:</b>		N/A
<b>Material Assessment Score:</b>		N/A
<b>Priority Assessment Score:</b>		N/A
<b>Action:</b>	N/A	
<b>Comments:</b>	Limited access into loft space due to minimal space	

Document Name	Author	Issued by	Revision Number	Issue Date	Page No
2019	Emma Humphreys	Armour AS	0	27/08/2019	17

**Item No: 8****Sample No: 2****Location: Corridor Loft Space**

<b>Material Description:</b>	Textile Packers under Roof Brackets	
<b>Identification:</b>	Sampled – No Asbestos Detected	
<b>Approx. quantity:</b>	1M2	
<b>Accessibility</b>	N/A	<i>Assessment Score</i>
<b>Product type:</b>		N/A
<b>Extent of Damage:</b>		N/A
<b>Surface Treatment:</b>		N/A
<b>Asbestos type:</b>		N/A
<b>Material Assessment Score:</b>		N/A
<b>Priority Assessment Score:</b>		N/A
<b>Action:</b>	N/A	
<b>Comments:</b>	N/A	

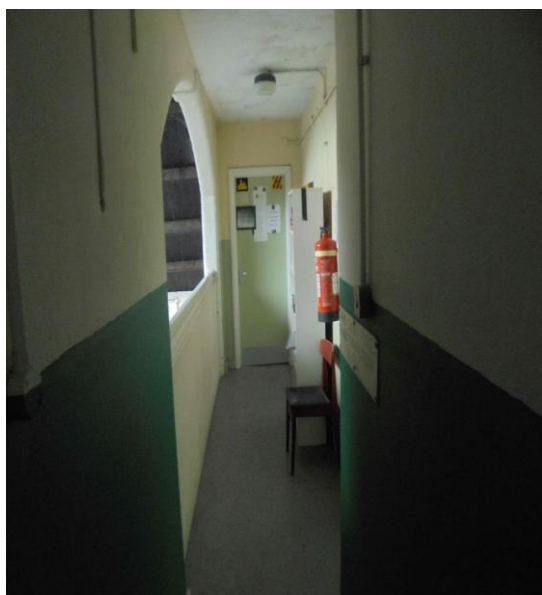
Document Name	Author	Issued by	Revision Number	Issue Date	Page No
2019	Emma Humphreys	Armour AS	0	27/08/2019	18



**Item No: 9**

**Sample No: N/A**

**Location: Corridor and Stairwell – First Floor**



<b>Material Description:</b>	Visual Inspection – No Suspect Materials Found	
<b>Identification:</b>	N/A	
<b>Approx. quantity:</b>	N/A	
<b>Accessibility</b>	N/A	<i>Assessment Score</i>
<b>Product type:</b>		N/A
<b>Extent of Damage:</b>		N/A
<b>Surface Treatment:</b>		N/A
<b>Asbestos type:</b>		N/A
<b>Material Assessment Score:</b>		N/A
<b>Priority Assessment Score:</b>		N/A
<b>Action:</b>	N/A	
<b>Comments:</b>	Modern Stair Nosing	

Document Name	Author	Issued by	Revision Number	Issue Date	Page No
2019	Emma Humphreys	Armour AS	0	27/08/2019	19



**Item No: 12**

**Sample No: N/A**

**Location: Stores x 2 – Ground Floor**



<b>Material Description:</b>	Visual Inspection – No Suspect Materials Found	
<b>Identification:</b>	N/A	
<b>Approx. quantity:</b>	N/A	
<b>Accessibility</b>	N/A	<i>Assessment Score</i>
<b>Product type:</b>		N/A
<b>Extent of Damage:</b>		N/A
<b>Surface Treatment:</b>		N/A
<b>Asbestos type:</b>		N/A
<b>Material Assessment Score:</b>		N/A
<b>Priority Assessment Score:</b>		N/A
<b>Action:</b>	N/A	
<b>Comments:</b>	Limited access into room due to stored items	

Document Name	Author	Issued by	Revision Number	Issue Date	Page No
2019	Emma Humphreys	Armour AS	0	27/08/2019	20



**Item No: 13**

**Sample No: N/A**

**Location: Circulation x 2 – Ground Floor**



<b>Material Description:</b>	Visual Inspection – No Suspect Materials Found	
<b>Identification:</b>	N/A	
<b>Approx. quantity:</b>	N/A	
<b>Accessibility</b>	N/A	<i>Assessment Score</i>
<b>Product type:</b>		N/A
<b>Extent of Damage:</b>		N/A
<b>Surface Treatment:</b>		N/A
<b>Asbestos type:</b>		N/A
<b>Material Assessment Score:</b>		N/A
<b>Priority Assessment Score:</b>		N/A
<b>Action:</b>	N/A	
<b>Comments:</b>	Modern Electrics	

Document Name	Author	Issued by	Revision Number	Issue Date	Page No
2019	Emma Humphreys	Armour AS	0	27/08/2019	21

**Item No: 17****Sample No: N/A****Location: Drill Hall – Ground Floor**

<b>Material Description:</b>	Visual Inspection – No Suspect Materials Found	
<b>Identification:</b>	N/A	
<b>Approx. quantity:</b>	N/A	
<b>Accessibility</b>	N/A	<i>Assessment Score</i>
<b>Product type:</b>		N/A
<b>Extent of Damage:</b>		N/A
<b>Surface Treatment:</b>		N/A
<b>Asbestos type:</b>		N/A
<b>Material Assessment Score:</b>		N/A
<b>Priority Assessment Score:</b>		N/A
<b>Action:</b>	N/A	
<b>Comments:</b>	N/A	

Document Name	Author	Issued by	Revision Number	Issue Date	Page No
2019	Emma Humphreys	Armour AS	0	27/08/2019	22



**Item No: 18**

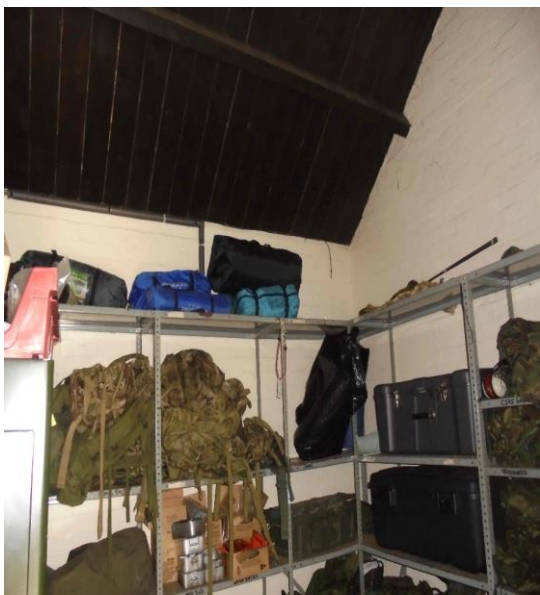
**Sample No: N/A**

**Location: Firing Range- Ground Floor**



<b>Material Description:</b>	Visual Inspection – No Suspect Materials Found	
<b>Identification:</b>	N/A	
<b>Approx. quantity:</b>	N/A	
<b>Accessibility</b>	N/A	<i>Assessment Score</i>
<b>Product type:</b>		N/A
<b>Extent of Damage:</b>		N/A
<b>Surface Treatment:</b>		N/A
<b>Asbestos type:</b>		N/A
<b>Material Assessment Score:</b>		N/A
<b>Priority Assessment Score:</b>		N/A
<b>Action:</b>	N/A	
<b>Comments:</b>	N/A	

Document Name	Author	Issued by	Revision Number	Issue Date	Page No
2019	Emma Humphreys	Armour AS	0	27/08/2019	23

**Item No: 19****Sample No: 5****Location: Store – Ground Floor**

<b>Material Description:</b>	Floor Tiles	
<b>Identification:</b>	Sampled – No Asbestos Detected	
<b>Approx. quantity:</b>	14M2	
<b>Accessibility</b>	N/A	<i>Assessment Score</i>
<b>Product type:</b>		N/A
<b>Extent of Damage:</b>		N/A
<b>Surface Treatment:</b>		N/A
<b>Asbestos type:</b>		N/A
<b>Material Assessment Score:</b>		N/A
<b>Priority Assessment Score:</b>		N/A
<b>Action:</b>	N/A	
<b>Comments:</b>	N/A	

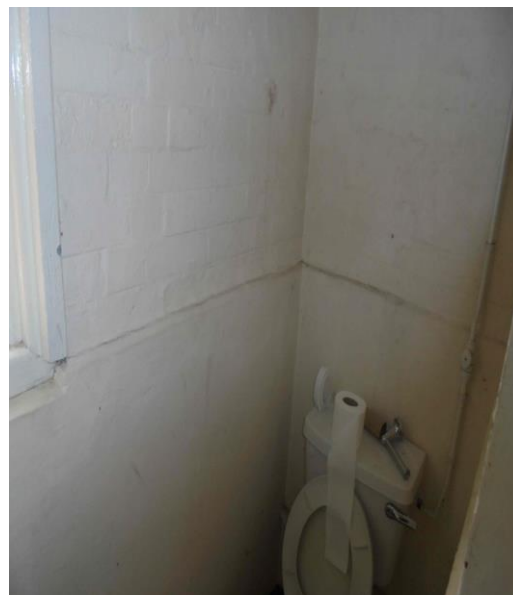
Document Name	Author	Issued by	Revision Number	Issue Date	Page No
2019	Emma Humphreys	Armour AS	0	27/08/2019	24



**Item No: 20**

**Sample No: N/A**

**Location: WC – Ground Floor**



<b>Material Description:</b>	Visual Inspection – No Suspect Materials Found	
<b>Identification:</b>	N/A	
<b>Approx. quantity:</b>	N/A	
<b>Accessibility</b>	N/A	<i>Assessment Score</i>
<b>Product type:</b>		N/A
<b>Extent of Damage:</b>		N/A
<b>Surface Treatment:</b>		N/A
<b>Asbestos type:</b>		N/A
<b>Material Assessment Score:</b>		N/A
<b>Priority Assessment Score:</b>		N/A
<b>Action:</b>	N/A	
<b>Comments:</b>	N/A	

Document Name	Author	Issued by	Revision Number	Issue Date	Page No
2019	Emma Humphreys	Armour AS	0	27/08/2019	25



**Item No: 21**

**Sample No: N/A**

**Location: WC and Lobby – Ground Floor**



<b>Material Description:</b>	Visual Inspection – No Suspect Materials Found	
<b>Identification:</b>	N/A	
<b>Approx. quantity:</b>	N/A	
<b>Accessibility</b>	N/A	<i>Assessment Score</i>
<b>Product type:</b>		N/A
<b>Extent of Damage:</b>		N/A
<b>Surface Treatment:</b>		N/A
<b>Asbestos type:</b>		N/A
<b>Material Assessment Score:</b>		N/A
<b>Priority Assessment Score:</b>		N/A
<b>Action:</b>	N/A	
<b>Comments:</b>	N/A	

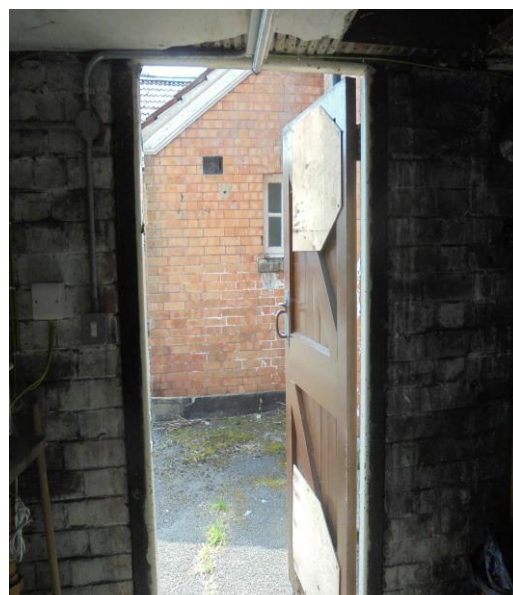
Document Name	Author	Issued by	Revision Number	Issue Date	Page No
2019	Emma Humphreys	Armour AS	0	27/08/2019	26



**Item No: 22**

**Sample No: N/A**

**Location: Store – Ground Floor**



<b>Material Description:</b>	Visual Inspection – No Suspect Materials Found	
<b>Identification:</b>	N/A	
<b>Approx. quantity:</b>	N/A	
<b>Accessibility</b>	N/A	<i>Assessment Score</i>
<b>Product type:</b>		N/A
<b>Extent of Damage:</b>		N/A
<b>Surface Treatment:</b>		N/A
<b>Asbestos type:</b>		N/A
<b>Material Assessment Score:</b>		N/A
<b>Priority Assessment Score:</b>		N/A
<b>Action:</b>	N/A	
<b>Comments:</b>	N/A	

Document Name	Author	Issued by	Revision Number	Issue Date	Page No
2019	Emma Humphreys	Armour AS	0	27/08/2019	27

## **Section 6: Survey Objectives**

Instructions were received from Sue Morrell of Wessex RFCA to carry out a Management asbestos survey at Chard Platoon, Somerset, TA20 1AE in accordance with HSG264 and Armour Analytical's quality procedures.

The survey was carried out on 8<sup>th</sup> July 2019 by David Kelly with the objective of facilitating a Management report.

This Management survey is characterised as a 'Visual Inspection Sampling and Identification Survey' in HSG264. This type of survey is used to locate and describe, so far as is reasonably practicable, all asbestos containing materials (ACMs) in the building and will by its nature involve the partial destruction of the building's fabric as access is gained to all areas. A full sampling programme is undertaken to identify possible ACMs and estimate the extent of ACMs reported.

The objective of this survey report is to identify, so far as is reasonably practicable, the location, extent, product type and composition of ACMS within the building to enable the building occupants to put management and remedial procedures in place.

Document Name	Author	Issued by	Revision Number	Issue Date	Page No
2019	Emma Humphreys	Armour AS	0	27/08/2019	28

## **Section 7: Survey Techniques**

Each floor, room and area within the scope was systematically inspected for suspect materials thought or known to contain asbestos and where such materials were encountered their location, extent, and composition were recorded.

Where materials of a similar nature exist, to those previously sampled, and a reasoned argument can be made that their composition is likely to be identical further physical sampling was not undertaken.

Photographs were taken of all sample locations, unless otherwise stated.

The analysis of suspect ACMs was undertaken by a UKAS accredited laboratory using the analytical method detailed in *HSG248, Appendix 2 -Asbestos: The analysts' guide for sampling, analysis and clearance procedures*.

Document Name	Author	Issued by	Revision Number	Issue Date	Page No
2019	Emma Humphreys	Armour AS	0	27/08/2019	29

## **Section 8: Survey Caveat**

This report is based upon a management report inspection of an unfamiliar site. During the course of the survey all reasonable efforts were made to identify the physical presence of materials containing asbestos within the building.

A Management Survey is a non-intrusive survey, meaning that access within the fabric of the building is limited. The survey does not include access to the following areas (unless agreed beforehand with the Client and provisions are put in place):

- Within wall or ceiling construction;
- Under fixed flooring;
- Within non-openable boxings;
- Within live electrics, boilers or machinery;
- Where access/visibility is limited in an area due to stored items, furniture or services;
- Areas where there is no safe access to inspect such as floor ducts, lift shafts and loft spaces with no crawlboards;
- High level areas that are too high to safely inspect.
- Within pipework insulation throughout building as this would affect the integrity of services.

Any intrusive works carried out within the building must first be subject to a Refurbishment Asbestos Survey.

This report will be restricted to the areas that fall within the scope of works for project and will not take into account any area's that do not fall within the scope. Any asbestos that is identified within this report will need to be added to the buildings existing information and should not form the basis for a management survey. This survey will not include priority assessments nor will it include a register.

This survey considered the construction of the building, associated fixtures & fittings and associated structures and in no way should it be considered as a ground investigation report.

Services should be disconnected prior to commencement of a Management survey; however, where plant and/or electrical installations are live or appear to be live then these will not be accessed.

This survey report is not a bill of quantities.

Document Name	Author	Issued by	Revision Number	Issue Date	Page No
2019	Emma Humphreys	Armour AS	0	27/08/2019	30

## **Section 9: Survey Notes**

This report has been written with reference to the various Guidance Notes etc, issued, and current at the date of this report and describes circumstances at the site on the date the investigation took place.

Where similar items exist in the building, only one or two samples have been taken to ascertain the material content. It was assumed that similar products were of the same material.

Any person undertaking work within the buildings should be told of the presence of asbestos. This briefing also applies to any other person associated with the site, including staff, sub-contractors and others.

The drawings in the report are not to scale and are illustrative only to indicate approximate locations. The descriptions used are for location identification purposes.

All the recommendations described in this report are based upon assumptions made after consideration of the type of material, condition of the material, its location, analysis result and type of use the area is thought to be subjected to. However, statutory authorities or others could require amendments based on local knowledge, change in legislation, change in use or indeed other conditions or criteria.

Samples taken from floor tiles (or similar material) may include a bitumen adhesive as part of the sample. It is known that some proprietary brands of bitumen have an asbestos content and this will be included as an integral part of the bulk sample unless otherwise stated.

Document Name	Author	Issued by	Revision Number	Issue Date	Page No
2019	Emma Humphreys	Armour AS	0	27/08/2019	31

## Section 10: Material Assessment Algorithm

Variable	Score	Examples
Installation / Product type	1	Vinyl, 'Bakelite', Cement
	2	Asbestos insulating board, paper, rope
	3	Pipe insulation, spray coating, friable debris
Condition / damage	0	Good
	1	Slight / minor damage
	2	Moderate damage – breakage to surface treatment
	3	Major damage – smashed or exposed material
Surface treatment	0	Non-friable e.g. vinyl
	1	Enclosed insulation, encapsulated AIB
	2	Unsealed AIB, encapsulated insulation
	3	Unsealed insulation or spray coating
Asbestos type	1	Chrysotile
	2	Amosite & other amphiboles
	3	Crocidolite

The scores from each of the four sections are added together to produce a risk score:

Risk score	Risk assessment
<b>10 or more</b>	High risk
<b>7 – 9</b>	Medium risk
<b>5 – 6</b>	Low risk
<b>4 &amp; below</b>	Negligible risk

Document Name	Author	Issued by	Revision Number	Issue Date	Page No
2019	Emma Humphreys	Armour AS	0	27/08/2019	32



## Section 11: Certificates of Bulk Analysis



Our Ref: J171209 FI: 5  
Your Ref: 2481  
Date: 16/07/2019

**ENVIROCHEM**  
Analytical Laboratories Ltd.  
12 The Gardens  
Broadcut, Fareham  
Hampshire  
PO16 8SS



1227  
Tel: (01329) 287777  
Fax: (01329) 287755  
www.envirochem.co.uk  
office@envirochem.co.uk

### Asbestos Fibre Identification Report

**Client:** Armour Analytical Services Ltd  
Admirals Yard, Station Road, Patchway, Bristol, BS34 6LR  
**Site Address:** Chard Platoon, Somerset, TA20 1AE  
**Sampled By:** Armour Analytical Services Ltd  
**Date sampled/received:** 16th July 2019  
**Date analysed:** 16th July 2019  
**Analyst/s:** Stefan Kitchener  
**Analysis Location:** 12 The Gardens, Broadcut, Fareham, Hampshire, PO16 8SS

#### ANALYTICAL PROCEDURE

Fibre identification was carried out in accordance with the documented 'in-house' methods based on the HSE Guidance Note HSG 248. These employed stereo microscopy, polarized microscopy and dispersion staining techniques.

#### RESULTS

Sample No.	Sample Ref.	Location	Asbestos Detected	Asbestos Type
1	BS563652	Corridor & Loft Space - Felt to underside of roof	No	
2	BS563653	Corridor Loft Space - Textile packers under roof bracket	No	
3	BS563654	WC & Washroom, First Floor - Reinforced plastic toilet cistern	Yes	Amosite
4	BS563655	Mess Room, Ground Floor - Floor tiles and adhesive	Yes	Chrysotile

#### NOTES:

1. Sample(s) were examined for the presence of 6 types of asbestos fibre: crocidolite (blue), amosite (brown), chrysotile (white), anthophyllite, actinolite and tremolite.
2. Samples collected by the client are evaluated using information provided by the client. For samples collected by the client the date of receipt is deemed to be the same as the date sampled.
3. Envirochem is a UKAS accredited laboratory for sampling and identification of asbestos containing materials.
4. Comments, observations and opinions are outside the scope of UKAS accreditation.
5. The analytical method in the ISO12468 does not quantify the amount of asbestos present, therefore UKAS accreditation does not permit quantification.
6. If, during fibre identification, only 1 or 2 fibres are seen and identified as asbestos, then the term 'trace asbestos identified' is used.

SIGNATURE:

Authorised signatory

PRINT NAME: Frances Scott

Reg. No. 2378228 England. Registered Office: Envirochem, 12 The Gardens, Broadcut, Fareham, Hampshire, PO16 8SS.

Page 1 of 2

Document Name	Author	Issued by	Revision Number	Issue Date	Page No
2019	Emma Humphreys	Armour AS	0	27/08/2019	33



**ARMOUR**  
ANALYTICAL SERVICES



Our Ref: J171209 FI: 5  
Your Ref: 2481  
Date: 16/07/2019

## ENVIROCHEM

Analytical Laboratories Ltd.

12 The Gardens  
Broadcut, Fareham  
Hampshire  
PO16 8SS



1227  
Tel: (01329) 287777  
Fax: (01329) 287755  
www.envirochem.co.uk  
office@envirochem.co.uk

### Asbestos Fibre Identification Report

**Client:** Armour Analytical Services Ltd  
Admirals Yard, Station Road, Patchway, Bristol, BS34 6LR  
**Site Address:** Chard Platoon, Somerset, TA20 1AE  
**Sampled By:** Armour Analytical Services Ltd  
**Date sampled/received:** 16th July 2019  
**Date analysed:** 16th July 2019  
**Analyst/s:** Stefan Kitchener  
**Analysis Location:** 12 The Gardens, Broadcut, Fareham, Hampshire, PO16 8SS

#### ANALYTICAL PROCEDURE

Fibre identification was carried out in accordance with the documented 'in-house' methods based on the HSE Guidance Note HSG 248. These employed stereo microscopy, polarized microscopy and dispersion staining techniques.

#### RESULTS

Sample No.	Sample Ref.	Location	Asbestos Detected	Asbestos Type
5	BS563656	Store Ground Floor - Floor tiles	No	

#### NOTES:

1. Sample(s) were examined for the presence of 6 types of asbestos fibre: crocidolite (blue), amosite (brown), chrysotile (white), anthophyllite, actinolite and tremolite.
2. Samples collected by the client are evaluated using information provided by the client. For samples collected by the client the date of receipt is deemed to be the same as the date sampled.
3. Envirochem is a UKAS accredited laboratory for sampling and identification of asbestos containing materials.
4. Comments, observations and opinions are outside the scope of UKAS accreditation.
5. The analytical method in the HSG248 does not quantify the amount of asbestos present, therefore UKAS accreditation does not permit quantification.
6. If, during fibre identification, only 1 or 2 fibres are seen and identified as asbestos, then the term 'trace asbestos identified' is used.

SIGNATURE:

Authorised signatory

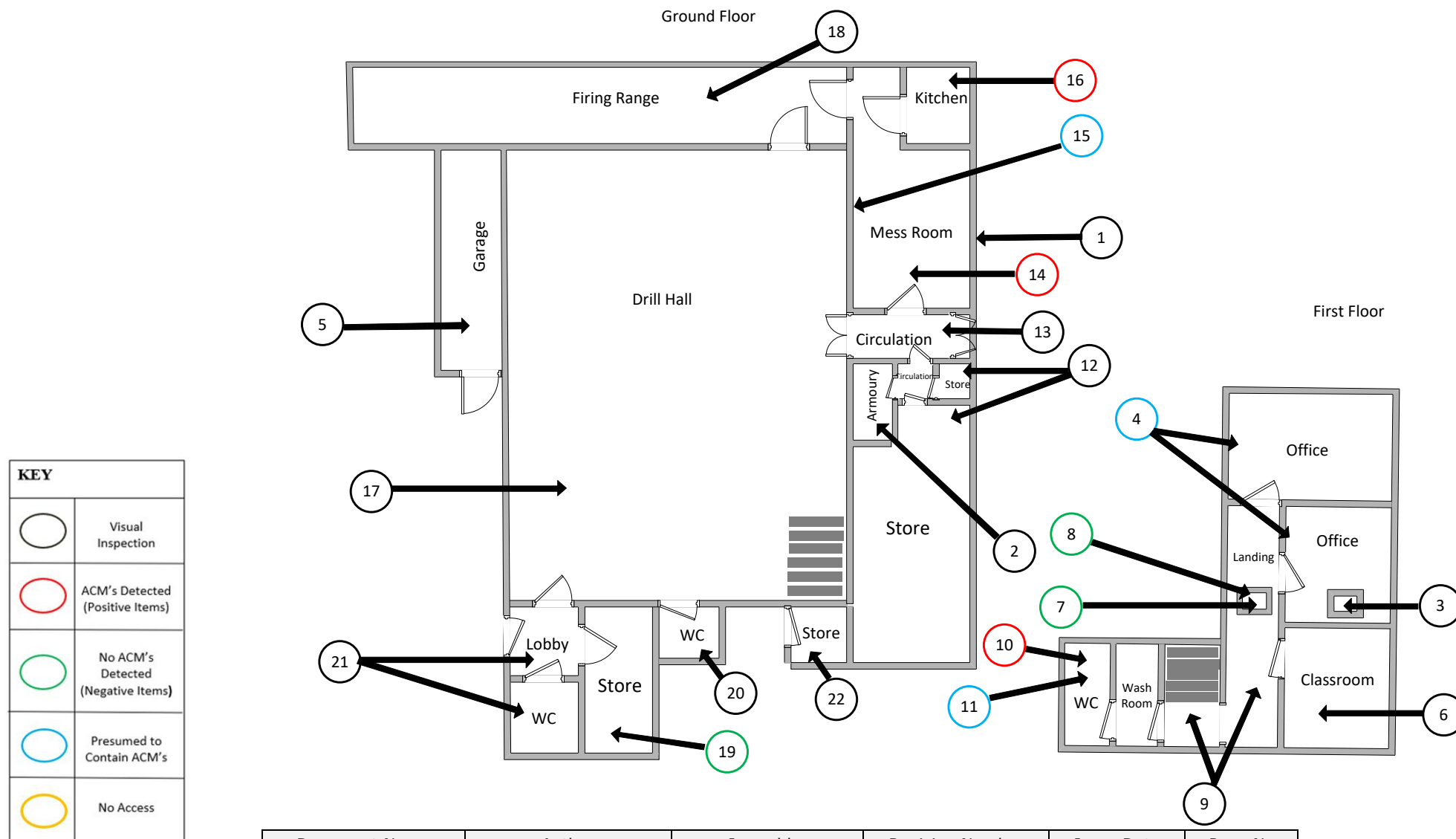
PRINT NAME: Frances Scott

Reg. No. 2378228 England. Registered Office: Envirochem, 12 The Gardens, Broadcut, Fareham, Hampshire, PO16 8SS.

Page 2 of 2

Document Name	Author	Issued by	Revision Number	Issue Date	Page No
2019	Emma Humphreys	Armour AS	0	27/08/2019	34

## Section 12: Site Plan



Document Name	Author	Issued by	Revision Number	Issue Date	Page No
2019	Emma Humphreys	Armour AS	0	27/08/2019	35

**I the surveyor can confirm that this report is accurate to my findings onsite and this survey has been Content checked by myself.**

**Checked by: David Kelly**

**Date: 16/08/2019**

**I the Admin Manager can confirm that this report is accurate to the paperwork received and this survey has been quality checked by myself.**

**Checked by: Emma Humphreys**

**Date: 16.08.2019**

**Report Compiled By**

**Armour Analytical Services Ltd, Admirals Yard, Station Road, Bristol, BS34 6LR**

Document Name	Author	Issued by	Revision Number	Issue Date	Page No
2019	Emma Humphreys	Armour AS	0	27/08/2019	36