



ARMOUR
ANALYTICAL SERVICES

Project Number 2481

**Management
Asbestos Survey Report**

**Shepton Mallet Platoon, Charlton Road,
Somerset, BA4 5AR**



Working in Partnership with Shield Environmental Services



Document Name	Author	Issued by	Revision Number	Issue Date	Page No
2019	Kacey Lillis	Armour AS	0	06/11/2019	1

Contents

Section	
1	Contacts & Authorisation
2	Executive Summary
3	Site Description & Survey Information
4	Positive and Presumed Photos Sheets
5	Negative Photos Sheets
6	Survey Objectives
7	Survey Techniques
8	Survey Caveat
9	Survey Notes
10	Material Assessment Algorithm
11	Certificates of Bulk Analysis
12	Site Plan

Document Name	Author	Issued by	Revision Number	Issue Date	Page No
2019	Kacey Lillis	Armour AS	0	06/11/2019	2



Section 1: Contact Details

Client Details:		Instructing Party:	
Wessex RFCA Mount House Mount Street Taunton TA1 3QE		Shield Environmental Shield House Caxton Business Park Crown Way Bristol BS30 8XJ	
Contact Name:	Sue Morrell	Contact Name:	Chloe Smith
Tel: 01823250115	Fax: N/A	Tel: 01173012650	Fax: N/A

Site Address:		Report Author:	
Shepton Mallet Platoon Charlton Road Somerset BA4 5AR		Armour Analytical Services Admirals Yard Station Road Bristol BS34 6LR	
Contact Name:	John Murphy	Contact Name:	Emma Humphreys
Tel: 07946710992	Fax: N/A	Mobile: 07468535836	

Lead Surveyor's Name:	Lead Surveyor's Authorising Signature:
D. Kelly	

Document Name	Author	Issued by	Revision Number	Issue Date	Page No
2019	Kacey Lillis	Armour AS	0	06/11/2019	3

Section 2: Executive Summary

Sample Number	Sample Type	Location	Analysis
DK/1	Lino Flooring Under Carpet	Office 3 and CO Office	N.A.D.I.S
DK/2	Panels Behind Heaters	Classroom 5	N.A.D.I.S
DK/3	Bitumen Coating to Metal Pipe	WC Lobby	Chrysotile
DK/4	Cement Wall Panels	Kitchen	Chrysotile
DK/5	Panel Behind Boiler	Kitchen	N.A.D.I.S
DK/6	Wall Panel	Armoury	Chrysotile
DK/7	Cement Pipe	Armoury	Chrysotile
DK/8	Cement Roof Tiles	External to Range	Chrysotile
DK/9	Cement Under Cloaking	External to Store	N.A.D.I.S
DK/10	Insulation Board Wall Panel	Range	Chrysotile

N.A.D.I.S – No Asbestos Detected in Sample

A.D – Asbestos Detected

In addition to the above sampled items, the following items have been either been “Strongly Presumed” To Contain Asbestos or “Presumed” to Contain Asbestos as they were either visually identified in being so, labelled after previously being sampled on prior surveys or not accessible at the time of the survey:

Item 2 – Ground Floor - Co Office – No Access within Safe Casings

Item 7 – Ground Floor – Drill Hall – No Access within Floor Ducts

The presence of asbestos in these areas cannot be ascertained at this time. If any works are to be carried out in these areas in the future, then these works should be approached cautiously.

In accordance with current legislation, any suspect materials encountered in these areas are to be assumed to contain asbestos until proven otherwise. This will normally involve cessation of works in the affected area.

Document Name	Author	Issued by	Revision Number	Issue Date	Page No
2019	Kacey Lillis	Armour AS	0	06/11/2019	4

Section 3: Site Description & Survey Information

Brief description on the general building construction

Stone Construction with a Pitched Profiled Metal Roof and a Pitched Cement Roof Tile Roof.

Caveat for no access areas

No Access Within Floor Ducts Under Drill Hall as Access May Damage Floor Boards.

EXTERNAL MATERIALS

Roof Type	Pitched
Roof Materials	Profiled Metal, Cement Tiles
Soffits	Metal
Fascia	Metal
Walls	Stone
Verge Under cloaking	Cement
Guttering	Metal
Downpipes	Metal
Window/Door frames	UPVC
Other Materials	N/A

INTERNAL MATERIALS

Loft Insulation	N/A
Roof Underlining	N/A
Ceilings	Plasterboard, Lath and Plaster, Suspended, Non-Asbestos Fiberboard
Walls <i>Internal</i>	Plasterboard, Brick, Cement, Asbestos Insulation Board
Floors	Lino, Carpet, Timber, Screed
Doors/Frames	Timber, Metal
Pipework/Insulation	Hessian, Foam
Boxings	N/A
Boiler Make	Modern
Flue Pipes	Metal, Cement
Storage Heaters	Non-Asbestos Heater
Electrical Boxes/Machinery	Modern
Ducting/Risers	N/A
Stairs	N/A
Lift Shafts	N/A
Other Materials	N/A

Document Name	Author	Issued by	Revision Number	Issue Date	Page No
2019	Kacey Lillis	Armour AS	0	06/11/2019	5



Section 4: Positive and Presumed Photos Sheets

Item No: 2

Sample No: N/A

Location: Ground Floor - CO Office



Material Description:	No Access within Safe Casings	
Identification:	Presumed to Contain Asbestos	
Approx. quantity:	1 X Safe	
Accessibility	Low	<i>Assessment Score</i>
Product type:	No Access	3
Extent of Damage:	No Access	3
Surface Treatment:	No Access	3
Asbestos type:	No Access	3
Material Assessment Score:		12
Priority Assessment Score:		High
Action:	Manage	
Comments:	No Access without Damaging Safe	

Document Name	Author	Issued by	Revision Number	Issue Date	Page No
2019	Kacey Lillis	Armour AS	0	06/11/2019	6



Item No: 7

Sample No: N/A

Location: Ground Floor - Drill Hall



Material Description:	No Access within Floor Ducts	
Identification:	Presumed to Contain Asbestos	
Approx. quantity:	Unknown	
Accessibility	Low	Assessment Score
Product type:	No Access	3
Extent of Damage:	No Access	3
Surface Treatment:	No Access	3
Asbestos type:	No Access	3
Material Assessment Score:		12
Priority Assessment Score:		High
Action:	Further Investigation Required	
Comments:	No Access as May Damage Flooring	

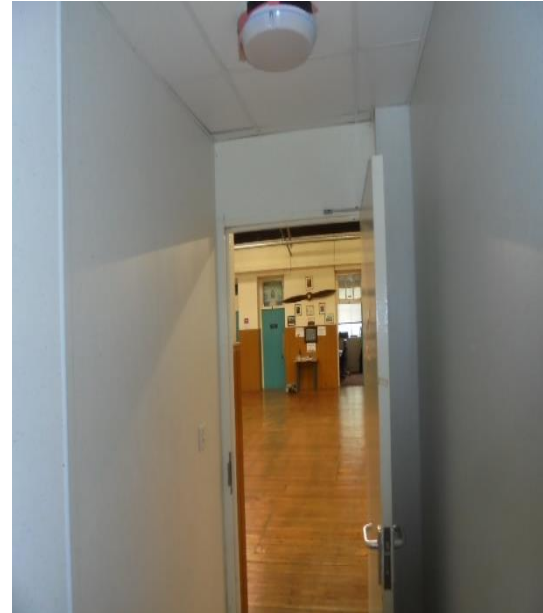
Document Name	Author	Issued by	Revision Number	Issue Date	Page No
2019	Kacey Lillis	Armour AS	0	06/11/2019	7



Item No: 8

Sample No: DK/3

Location: Ground Floor - WC Lobby



Material Description:	Bitumen Coating to Metal Pipe	
Identification:	Sampled – Asbestos Detected	
Approx. quantity:	<1LM	
Accessibility	Low	Assessment Score
Product type:	Bitumen	1
Extent of Damage:	Moderate	2
Surface Treatment:	Non-Friable	0
Asbestos type:	Chrysotile	1
Material Assessment Score:		3
Priority Assessment Score:		Negligible
Action:	Manage	
Comments:	Located in ceiling void	

Document Name	Author	Issued by	Revision Number	Issue Date	Page No
2019	Kacey Lillis	Armour AS	0	06/11/2019	8

**Item No: 14****Sample No: DK/4****Location: Ground Floor - Kitchen**

Material Description:	Cement Wall Panels	
Identification:	Sampled – Asbestos Detected	
Approx. quantity:	4M2	
Accessibility	High	Assessment Score
Product type:	Cement	1
Extent of Damage:	Minor	1
Surface Treatment:	Unsealed Cement	1
Asbestos type:	Chrysotile	1
Material Assessment Score:		4
Priority Assessment Score:		Negligible
Action:	Encapsulate/Label	
Comments:	Located to External Door Wall, Behind the Bins. Several Areas of Low Damage – Encapsulate Panels	

Document Name	Author	Issued by	Revision Number	Issue Date	Page No
2019	Kacey Lillis	Armour AS	0	06/11/2019	9



Item No: 15

Sample No: N/A

Location: Ground Floor - Kitchen



Material Description:	Cement Panels Fixed to Roof Batons	
Identification:	As Per Sample DK/4 – Asbestos Detected	
Approx. quantity:	1M2	
Accessibility	Low	Assessment Score
Product type:	Cement	1
Extent of Damage:	Minor	1
Surface Treatment:	Unsealed Cement	1
Asbestos type:	Chrysotile	1
Material Assessment Score:		4
Priority Assessment Score:		Negligible
Action:	Manage	
Comments:	Located in ceiling void	

Document Name	Author	Issued by	Revision Number	Issue Date	Page No
2019	Kacey Lillis	Armour AS	0	06/11/2019	10

**Item No: 25****Sample No: DK/6****Location: Ground Floor - Armoury**

Material Description:	Insulation Board Wall Panel	
Identification:	Sampled – Asbestos Detected	
Approx. quantity:	2M2	
Accessibility	Low	Assessment Score
Product type:	Asbestos Insulation Board	2
Extent of Damage:	Moderate	2
Surface Treatment:	Unsealed	2
Asbestos type:	Chrysotile	1
Material Assessment Score:		7
Priority Assessment Score:		Medium
Action:	Encapsulate/Label	
Comments:	Fraying to Edges of Panel – Encapsulate	

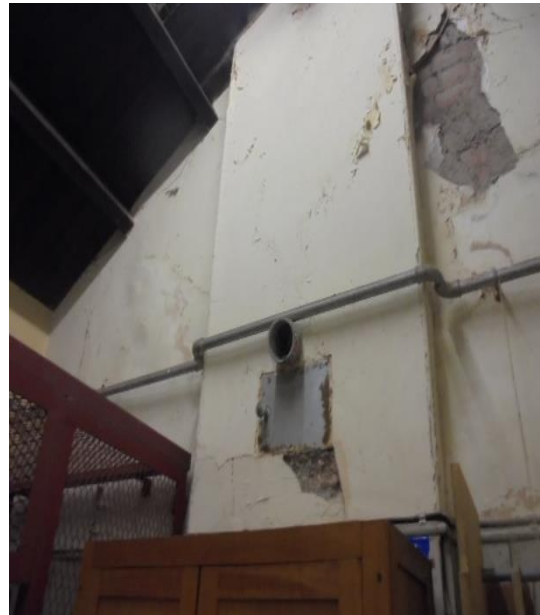
Document Name	Author	Issued by	Revision Number	Issue Date	Page No
2019	Kacey Lillis	Armour AS	0	06/11/2019	11



Item No: 26

Sample No: DK/7

Location: Ground Floor - Armoury



Material Description:	Cement Pipe	
Identification:	Sampled – Asbestos Detected	
Approx. quantity:	<1LM	
Accessibility	Low	Assessment Score
Product type:	Cement	1
Extent of Damage:	Minor	1
Surface Treatment:	Unsealed Cement	1
Asbestos type:	Chrysotile	1
Material Assessment Score:		4
Priority Assessment Score:		Negligible
Action:	Manage	
Comments:	N/A	

Document Name	Author	Issued by	Revision Number	Issue Date	Page No
2019	Kacey Lillis	Armour AS	0	06/11/2019	12



Item No: 27

Sample No: DK/8

Location: External to Range



Material Description:	Cement Roof Tiles	
Identification:	Sampled – Asbestos Detected	
Approx. quantity:	180M2	
Accessibility	Low	Assessment Score
Product type:	Cement	1
Extent of Damage:	Minor	1
Surface Treatment:	Unsealed Cement	1
Asbestos type:	Chrysotile	1
Material Assessment Score:		4
Priority Assessment Score:		Negligible
Action:	Manage	
Comments:	N/A	

Document Name	Author	Issued by	Revision Number	Issue Date	Page No
2019	Kacey Lillis	Armour AS	0	06/11/2019	13

**Item No: 34****Sample No: DK/10****Location: Range**

Material Description:	Insulation Board Panel on Wall	
Identification:	Sampled – Asbestos Detected	
Approx. quantity:	<1M2	
Accessibility	High	Assessment Score
Product type:	Asbestos Insulation Board	2
Extent of Damage:	Moderate	2
Surface Treatment:	Unsealed Cement	2
Asbestos type:	Chrysotile	1
Material Assessment Score:		7
Priority Assessment Score:		Medium
Action:	Encapsulate	
Comments:	Temporarily Sealed with Tape but Requires Encapsulation	

Document Name	Author	Issued by	Revision Number	Issue Date	Page No
2019	Kacey Lillis	Armour AS	0	06/11/2019	14



Section 5: Negative Photos Sheets

Item No: 1

Sample No: DK/1

Location: Ground Floor - Office 3 and CO Office



Material Description:	Lino Flooring Under Carpet	
Identification:	Sampled – No Asbestos Detected	
Approx. quantity:	20M2	
Accessibility	N/A	<i>Assessment Score</i>
Product type:	N/A	N/A
Extent of Damage:	N/A	N/A
Surface Treatment:	N/A	N/A
Asbestos type:	N/A	N/A
Material Assessment Score:		N/A
Priority Assessment Score:		N/A
Action:	N/A	
Comments:	N/A	

Document Name	Author	Issued by	Revision Number	Issue Date	Page No
2019	Kacey Lillis	Armour AS	0	06/11/2019	15



Item No: 3

Sample No: N/A

Location: Ground Floor - Classroom 1



Material Description:	Visual Inspection – No Suspect Materials Found	
Identification:	N/A	
Approx. quantity:	N/A	
Accessibility	N/A	Assessment Score
Product type:	N/A	N/A
Extent of Damage:	N/A	N/A
Surface Treatment:	N/A	N/A
Asbestos type:	N/A	N/A
Material Assessment Score:		N/A
Priority Assessment Score:		N/A
Action:	N/A	
Comments:	No Access behind Timber Fireplace Panel – Apply Caution	

Document Name	Author	Issued by	Revision Number	Issue Date	Page No
2019	Kacey Lillis	Armour AS	0	06/11/2019	16



Item No: 4

Sample No: N/A

Location: Ground Floor - Office 2



Material Description:	Visual Inspection – No Suspect Materials Found	
Identification:	N/A	
Approx. quantity:	N/A	
Accessibility	N/A	<i>Assessment Score</i>
Product type:	N/A	N/A
Extent of Damage:	N/A	N/A
Surface Treatment:	N/A	N/A
Asbestos type:	N/A	N/A
Material Assessment Score:		N/A
Priority Assessment Score:		N/A
Action:	N/A	
Comments:	N/A	

Document Name	Author	Issued by	Revision Number	Issue Date	Page No
2019	Kacey Lillis	Armour AS	0	06/11/2019	17



Item No: 5

Sample No: N/A

Location: Ground Floor - Store 4



Material Description:	Visual Inspection – No Suspect Materials Found	
Identification:	N/A	
Approx. quantity:	N/A	
Accessibility	N/A	Assessment Score
Product type:	N/A	N/A
Extent of Damage:	N/A	N/A
Surface Treatment:	N/A	N/A
Asbestos type:	N/A	N/A
Material Assessment Score:		N/A
Priority Assessment Score:		N/A
Action:	N/A	
Comments:	No Access Behind Timber Fireplace Panel – Apply Caution	

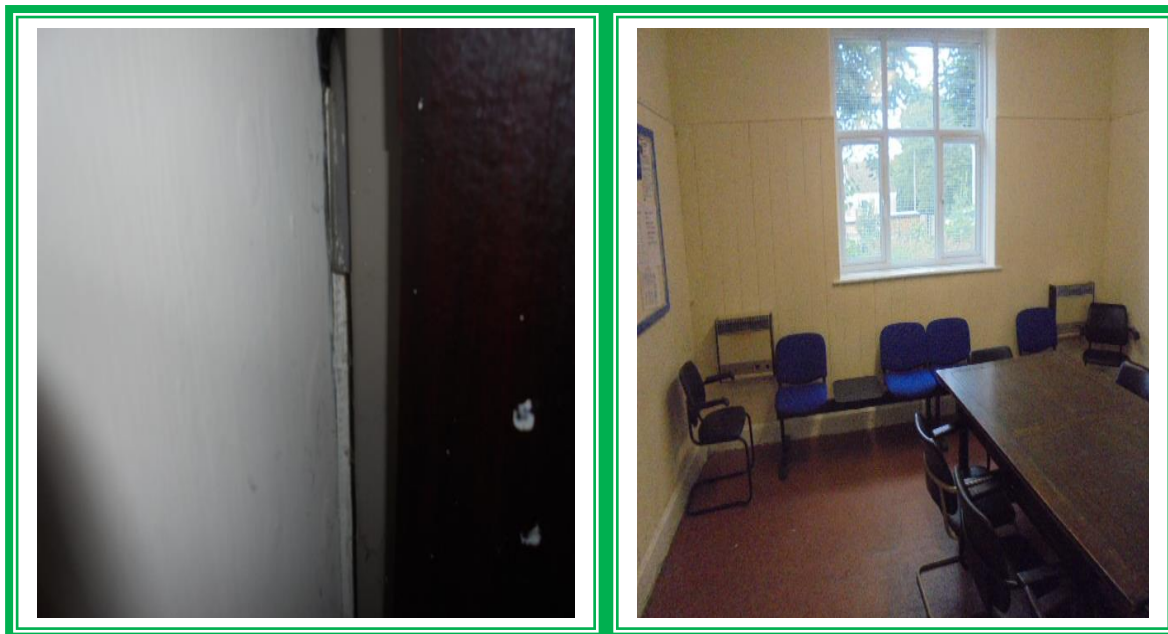
Document Name	Author	Issued by	Revision Number	Issue Date	Page No
2019	Kacey Lillis	Armour AS	0	06/11/2019	18



Item No: 6

Sample No: DK/2

Location: Ground Floor - Classroom 5



Material Description:	Panels behind Heater	
Identification:	Sampled – No Asbestos Detected	
Approx. quantity:	2 X Heaters	
Accessibility	N/A	<i>Assessment Score</i>
Product type:	N/A	N/A
Extent of Damage:	N/A	N/A
Surface Treatment:	N/A	N/A
Asbestos type:	N/A	N/A
Material Assessment Score:		N/A
Priority Assessment Score:		N/A
Action:	N/A	
Comments:	N/A	

Document Name	Author	Issued by	Revision Number	Issue Date	Page No
2019	Kacey Lillis	Armour AS	0	06/11/2019	19



Item No: 9

Sample No: N/A

Location: Ground Floor - Men's WC



Material Description:	Visual Inspection – No Suspect Materials Found	
Identification:	N/A	
Approx. quantity:	N/A	
Accessibility	N/A	<i>Assessment Score</i>
Product type:	N/A	N/A
Extent of Damage:	N/A	N/A
Surface Treatment:	N/A	N/A
Asbestos type:	N/A	N/A
Material Assessment Score:		N/A
Priority Assessment Score:		N/A
Action:	N/A	
Comments:	N/A	

Document Name	Author	Issued by	Revision Number	Issue Date	Page No
2019	Kacey Lillis	Armour AS	0	06/11/2019	20



Item No: 10

Sample No: N/A

Location: Ground Floor - Ladies WC



Material Description:	Visual Inspection – No Suspect Materials Found	
Identification:	N/A	
Approx. quantity:	N/A	
Accessibility	N/A	<i>Assessment Score</i>
Product type:	N/A	N/A
Extent of Damage:	N/A	N/A
Surface Treatment:	N/A	N/A
Asbestos type:	N/A	N/A
Material Assessment Score:		N/A
Priority Assessment Score:		N/A
Action:	N/A	
Comments:	N/A	

Document Name	Author	Issued by	Revision Number	Issue Date	Page No
2019	Kacey Lillis	Armour AS	0	06/11/2019	21



Item No: 11

Sample No: N/A

Location: Ground Floor - Staff WC



Material Description:	Visual Inspection – No Suspect Materials Found	
Identification:	N/A	
Approx. quantity:	N/A	
Accessibility	N/A	<i>Assessment Score</i>
Product type:	N/A	N/A
Extent of Damage:	N/A	N/A
Surface Treatment:	N/A	N/A
Asbestos type:	N/A	N/A
Material Assessment Score:		N/A
Priority Assessment Score:		N/A
Action:	N/A	
Comments:	N/A	

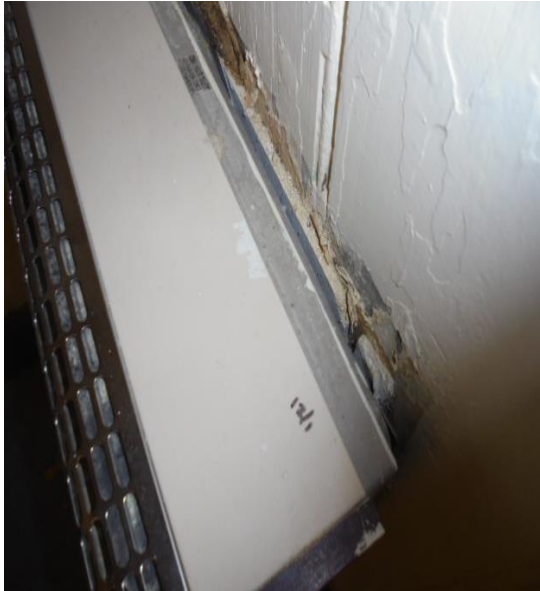
Document Name	Author	Issued by	Revision Number	Issue Date	Page No
2019	Kacey Lillis	Armour AS	0	06/11/2019	22



Item No: 12

Sample No: N/A

Location: Ground Floor - Classroom 12



Material Description:	Panels Behind Heater	
Identification:	As Sample DK/2	
Approx. quantity:	<1M2	
Accessibility	N/A	<i>Assessment Score</i>
Product type:	N/A	N/A
Extent of Damage:	N/A	N/A
Surface Treatment:	N/A	N/A
Asbestos type:	N/A	N/A
Material Assessment Score:		N/A
Priority Assessment Score:		N/A
Action:	N/A	
Comments:	N/A	

Document Name	Author	Issued by	Revision Number	Issue Date	Page No
2019	Kacey Lillis	Armour AS	0	06/11/2019	23



Item No: 13

Sample No: N/A

Location: Ground Floor - Platoon Office 13



Material Description:	Visual Inspection – No Suspect Materials Found	
Identification:	N/A	
Approx. quantity:	N/A	
Accessibility	N/A	<i>Assessment Score</i>
Product type:	N/A	N/A
Extent of Damage:	N/A	N/A
Surface Treatment:	N/A	N/A
Asbestos type:	N/A	N/A
Material Assessment Score:		N/A
Priority Assessment Score:		N/A
Action:	N/A	
Comments:	N/A	

Document Name	Author	Issued by	Revision Number	Issue Date	Page No
2019	Kacey Lillis	Armour AS	0	06/11/2019	24



Item No: 16

Sample No: DK/5

Location: Ground Floor - Kitchen



Material Description:	Panel Behind Boiler	
Identification:	Sampled – No Asbestos Detected	
Approx. quantity:	<1M2	
Accessibility	N/A	<i>Assessment Score</i>
Product type:	N/A	N/A
Extent of Damage:	N/A	N/A
Surface Treatment:	N/A	N/A
Asbestos type:	N/A	N/A
Material Assessment Score:		N/A
Priority Assessment Score:		N/A
Action:	N/A	
Comments:	Modern Boiler	

Document Name	Author	Issued by	Revision Number	Issue Date	Page No
2019	Kacey Lillis	Armour AS	0	06/11/2019	25



Item No: 17

Sample No: N/A

Location: Ground Floor - Office



Material Description:	Visual Inspection – No Suspect Materials Found	
Identification:	N/A	
Approx. quantity:	N/A	
Accessibility	N/A	Assessment Score
Product type:	N/A	N/A
Extent of Damage:	N/A	N/A
Surface Treatment:	N/A	N/A
Asbestos type:	N/A	N/A
Material Assessment Score:		N/A
Priority Assessment Score:		N/A
Action:	N/A	
Comments:	N/A	

Document Name	Author	Issued by	Revision Number	Issue Date	Page No
2019	Kacey Lillis	Armour AS	0	06/11/2019	26



Item No: 18

Sample No: N/A

Location: Ground Floor - Office



Material Description:	Visual Inspection – No Suspect Materials Found	
Identification:	N/A	
Approx. quantity:	N/A	
Accessibility	N/A	<i>Assessment Score</i>
Product type:	N/A	N/A
Extent of Damage:	N/A	N/A
Surface Treatment:	N/A	N/A
Asbestos type:	N/A	N/A
Material Assessment Score:		N/A
Priority Assessment Score:		N/A
Action:	N/A	
Comments:	Non-Asbestos Fiberboard Ceiling	

Document Name	Author	Issued by	Revision Number	Issue Date	Page No
2019	Kacey Lillis	Armour AS	0	06/11/2019	27



Item No: 19

Sample No: N/A

Location: Ground Floor - Stores



Material Description:	Visual Inspection – No Suspect Materials Found	
Identification:	N/A	
Approx. quantity:	N/A	
Accessibility	N/A	<i>Assessment Score</i>
Product type:	N/A	N/A
Extent of Damage:	N/A	N/A
Surface Treatment:	N/A	N/A
Asbestos type:	N/A	N/A
Material Assessment Score:		N/A
Priority Assessment Score:		N/A
Action:	N/A	
Comments:	Non-Asbestos Fiberboard Ceiling	

Document Name	Author	Issued by	Revision Number	Issue Date	Page No
2019	Kacey Lillis	Armour AS	0	06/11/2019	28



Item No: 20

Sample No: N/A

Location: Ground Floor - Stores



Material Description:	Visual Inspection – No Suspect Materials Found	
Identification:	N/A	
Approx. quantity:	N/A	
Accessibility	N/A	<i>Assessment Score</i>
Product type:	N/A	N/A
Extent of Damage:	N/A	N/A
Surface Treatment:	N/A	N/A
Asbestos type:	N/A	N/A
Material Assessment Score:		N/A
Priority Assessment Score:		N/A
Action:	N/A	
Comments:	N/A	

Document Name	Author	Issued by	Revision Number	Issue Date	Page No
2019	Kacey Lillis	Armour AS	0	06/11/2019	29



Item No: 21

Sample No: N/A

Location: Ground Floor - Lobby



Material Description:	Visual Inspection – No Suspect Materials Found	
Identification:	N/A	
Approx. quantity:	N/A	
Accessibility	N/A	<i>Assessment Score</i>
Product type:	N/A	N/A
Extent of Damage:	N/A	N/A
Surface Treatment:	N/A	N/A
Asbestos type:	N/A	N/A
Material Assessment Score:		N/A
Priority Assessment Score:		N/A
Action:	N/A	
Comments:	N/A	

Document Name	Author	Issued by	Revision Number	Issue Date	Page No
2019	Kacey Lillis	Armour AS	0	06/11/2019	30



Item No: 22

Sample No: N/A

Location: Ground Floor - Store



Material Description:	Visual Inspection – No Suspect Materials Found	
Identification:	N/A	
Approx. quantity:	N/A	
Accessibility	N/A	<i>Assessment Score</i>
Product type:	N/A	N/A
Extent of Damage:	N/A	N/A
Surface Treatment:	N/A	N/A
Asbestos type:	N/A	N/A
Material Assessment Score:		N/A
Priority Assessment Score:		N/A
Action:	N/A	
Comments:	N/A	

Document Name	Author	Issued by	Revision Number	Issue Date	Page No
2019	Kacey Lillis	Armour AS	0	06/11/2019	31



Item No: 23

Sample No: N/A

Location: Garage



Material Description:	Visual Inspection – No Suspect Materials Found	
Identification:	N/A	
Approx. quantity:	N/A	
Accessibility	N/A	<i>Assessment Score</i>
Product type:	N/A	N/A
Extent of Damage:	N/A	N/A
Surface Treatment:	N/A	N/A
Asbestos type:	N/A	N/A
Material Assessment Score:		N/A
Priority Assessment Score:		N/A
Action:	N/A	
Comments:	N/A	

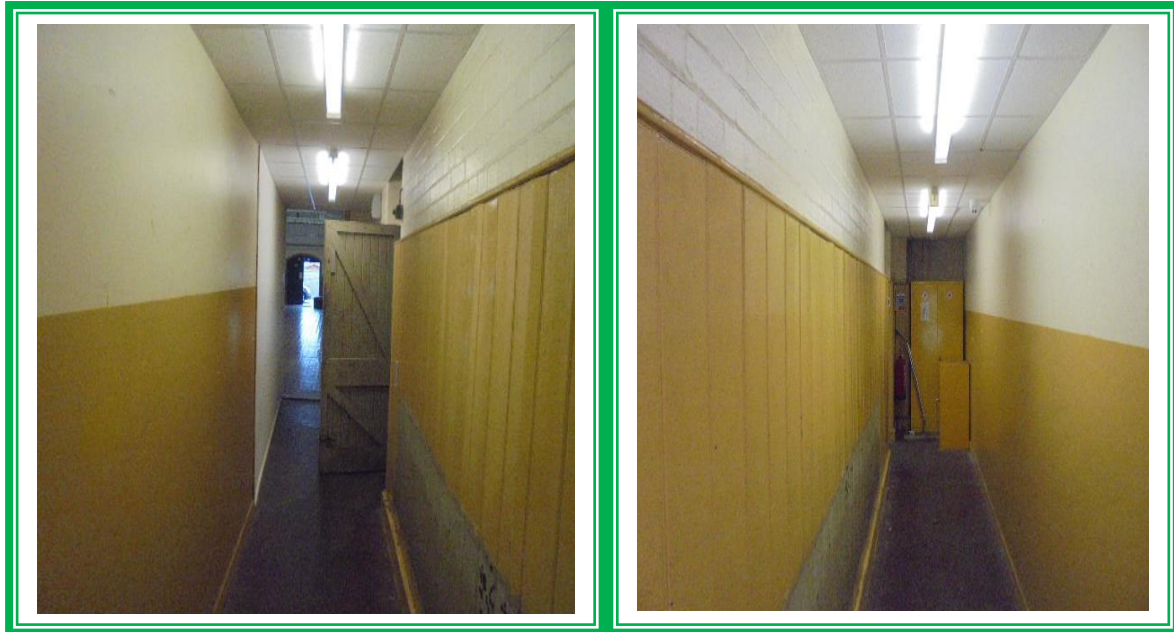
Document Name	Author	Issued by	Revision Number	Issue Date	Page No
2019	Kacey Lillis	Armour AS	0	06/11/2019	32



Item No: 24

Sample No: N/A

Location: Circulation



Material Description:	Visual Inspection – No Suspect Materials Found	
Identification:	N/A	
Approx. quantity:	N/A	
Accessibility	N/A	<i>Assessment Score</i>
Product type:	N/A	N/A
Extent of Damage:	N/A	N/A
Surface Treatment:	N/A	N/A
Asbestos type:	N/A	N/A
Material Assessment Score:		N/A
Priority Assessment Score:		N/A
Action:	N/A	
Comments:	Non-Asbestos Fiberboard Ceiling	

Document Name	Author	Issued by	Revision Number	Issue Date	Page No
2019	Kacey Lillis	Armour AS	0	06/11/2019	33



Item No: 28

Sample No: DK/9

Location: External to Store



Material Description:	Cement Undercloaking	
Identification:	Sampled – No Asbestos Detected	
Approx. quantity:	10LM	
Accessibility	N/A	<i>Assessment Score</i>
Product type:	N/A	N/A
Extent of Damage:	N/A	N/A
Surface Treatment:	N/A	N/A
Asbestos type:	N/A	N/A
Material Assessment Score:		N/A
Priority Assessment Score:		N/A
Action:	N/A	
Comments:	N/A	

Document Name	Author	Issued by	Revision Number	Issue Date	Page No
2019	Kacey Lillis	Armour AS	0	06/11/2019	34



Item No: 29

Sample No: Store

Location: Ground Floor - Store



Material Description:	Visual Inspection – No Suspect Materials Found	
Identification:	N/A	
Approx. quantity:	N/A	
Accessibility	N/A	<i>Assessment Score</i>
Product type:	N/A	N/A
Extent of Damage:	N/A	N/A
Surface Treatment:	N/A	N/A
Asbestos type:	N/A	N/A
Material Assessment Score:		N/A
Priority Assessment Score:		N/A
Action:	N/A	
Comments:	Limited Access to inspect Due to Stored Items	

Document Name	Author	Issued by	Revision Number	Issue Date	Page No
2019	Kacey Lillis	Armour AS	0	06/11/2019	35



Item No: 30

Sample No: N/A

Location: Ground Floor - Store



Material Description:	Visual Inspection – No Suspect Materials Found	
Identification:	N/A	
Approx. quantity:	N/A	
Accessibility	N/A	<i>Assessment Score</i>
Product type:	N/A	N/A
Extent of Damage:	N/A	N/A
Surface Treatment:	N/A	N/A
Asbestos type:	N/A	N/A
Material Assessment Score:		N/A
Priority Assessment Score:		N/A
Action:	N/A	
Comments:	Limited Access to inspect Due to Stored Items	

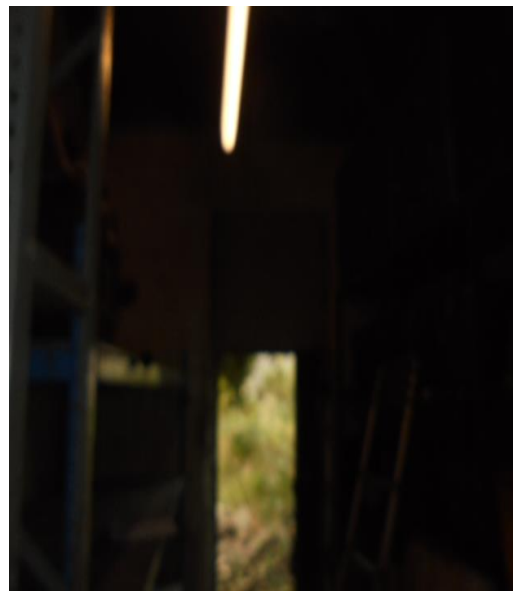
Document Name	Author	Issued by	Revision Number	Issue Date	Page No
2019	Kacey Lillis	Armour AS	0	06/11/2019	36



Item No: 31

Sample No: N/A

Location: Ground Floor - Store



Material Description:	Visual Inspection – No Suspect Materials Found	
Identification:	N/A	
Approx. quantity:	N/A	
Accessibility	N/A	<i>Assessment Score</i>
Product type:	N/A	N/A
Extent of Damage:	N/A	N/A
Surface Treatment:	N/A	N/A
Asbestos type:	N/A	N/A
Material Assessment Score:		N/A
Priority Assessment Score:		N/A
Action:	N/A	
Comments:	N/A	

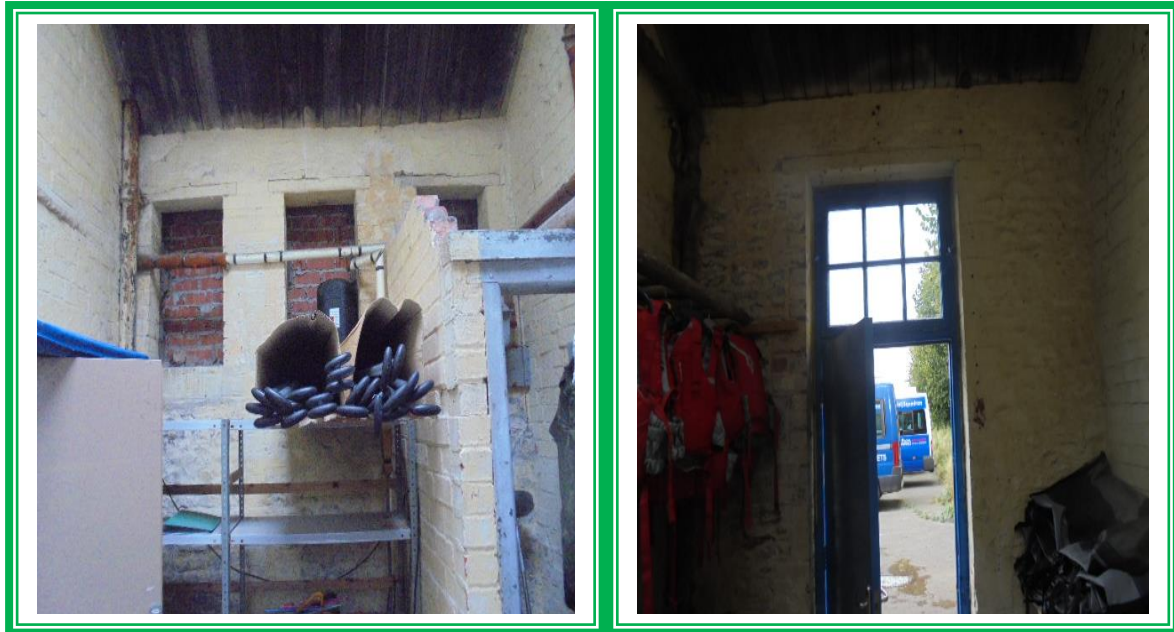
Document Name	Author	Issued by	Revision Number	Issue Date	Page No
2019	Kacey Lillis	Armour AS	0	06/11/2019	37



Item No: 32

Sample No: N/A

Location: Ground Floor - Store and WC



Material Description:	Visual Inspection – No Suspect Materials Found	
Identification:	N/A	
Approx. quantity:	N/A	
Accessibility	N/A	<i>Assessment Score</i>
Product type:	N/A	N/A
Extent of Damage:	N/A	N/A
Surface Treatment:	N/A	N/A
Asbestos type:	N/A	N/A
Material Assessment Score:		N/A
Priority Assessment Score:		N/A
Action:	N/A	
Comments:	N/A	

Document Name	Author	Issued by	Revision Number	Issue Date	Page No
2019	Kacey Lillis	Armour AS	0	06/11/2019	38



Item No: 33

Sample No: N/A

Location: Range Lobby



Material Description:	Visual Inspection – No Suspect Materials Found	
Identification:	N/A	
Approx. quantity:	N/A	
Accessibility	N/A	<i>Assessment Score</i>
Product type:	N/A	N/A
Extent of Damage:	N/A	N/A
Surface Treatment:	N/A	N/A
Asbestos type:	N/A	N/A
Material Assessment Score:		N/A
Priority Assessment Score:		N/A
Action:	N/A	
Comments:	N/A	

Document Name	Author	Issued by	Revision Number	Issue Date	Page No
2019	Kacey Lillis	Armour AS	0	06/11/2019	39



Item No: 35

Sample No: N/A

Location: Store



Material Description:	Visual Inspection – No Suspect Materials Found	
Identification:	N/A	
Approx. quantity:	N/A	
Accessibility	N/A	<i>Assessment Score</i>
Product type:	N/A	N/A
Extent of Damage:	N/A	N/A
Surface Treatment:	N/A	N/A
Asbestos type:	N/A	N/A
Material Assessment Score:		N/A
Priority Assessment Score:		N/A
Action:	N/A	
Comments:	N/A	

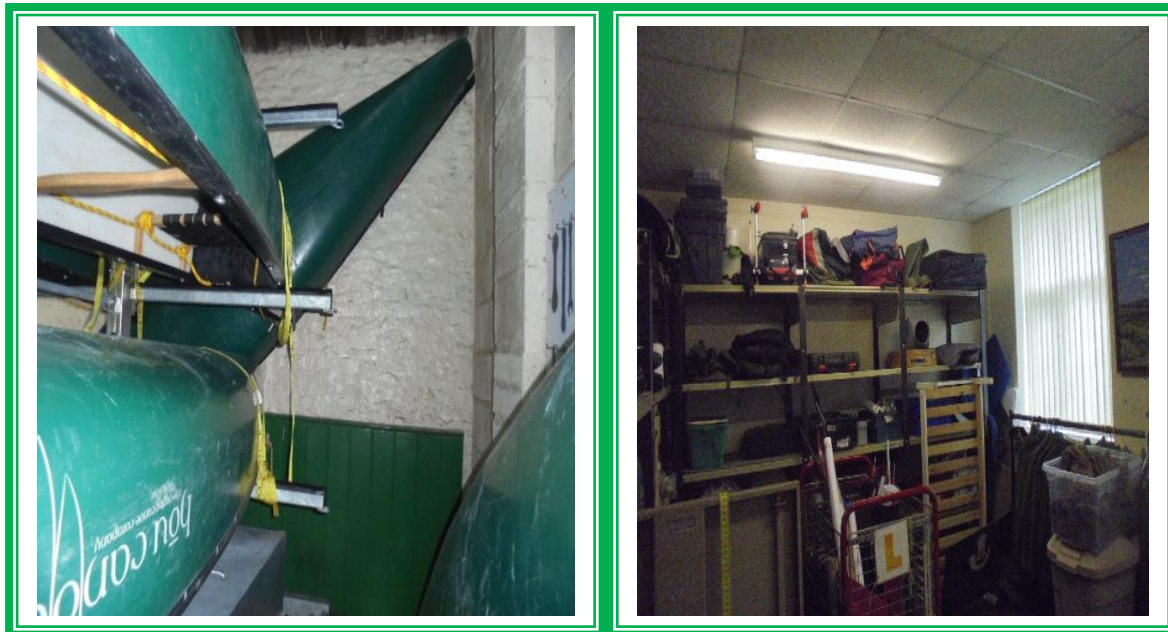
Document Name	Author	Issued by	Revision Number	Issue Date	Page No
2019	Kacey Lillis	Armour AS	0	06/11/2019	40



Item No: 36

Sample No: N/A

Location: Boat Store



Material Description:	Visual Inspection – No Suspect Materials Found	
Identification:	N/A	
Approx. quantity:	N/A	
Accessibility	N/A	<i>Assessment Score</i>
Product type:	N/A	N/A
Extent of Damage:	N/A	N/A
Surface Treatment:	N/A	N/A
Asbestos type:	N/A	N/A
Material Assessment Score:		N/A
Priority Assessment Score:		N/A
Action:	N/A	
Comments:	N/A	

Document Name	Author	Issued by	Revision Number	Issue Date	Page No
2019	Kacey Lillis	Armour AS	0	06/11/2019	41

Section 6: Survey Objectives

Instructions were received from Sue Morrell of Wessex RFCA to carry out a Management asbestos survey at Shepton Mallet Platoon, Charlton Road, Somerset BS4 5AR in accordance with HSG264 and Armour Analytical's quality procedures.

The survey was carried out on Thursday 3rd October 2019 by David Kelly with the objective of facilitating a Management report.

This Management survey is characterised as a 'Visual Inspection Sampling and Identification Survey' in HSG264. This type of survey is used to locate and describe, so far as is reasonably practicable, all asbestos containing materials (ACMs) in the building and will by its nature involve the partial destruction of the building's fabric as access is gained to all areas. A full sampling programme is undertaken to identify possible ACMs and estimate the extent of ACMs reported.

The objective of this survey report is to identify, so far as is reasonably practicable, the location, extent, product type and composition of ACMS within the building to enable the building occupants to put management and remedial procedures in place.

Document Name	Author	Issued by	Revision Number	Issue Date	Page No
2019	Kacey Lillis	Armour AS	0	06/11/2019	42

Section 7: Survey Techniques

Each floor, room and area within the scope was systematically inspected for suspect materials thought or known to contain asbestos and where such materials were encountered their location, extent, and composition were recorded.

Where materials of a similar nature exist, to those previously sampled, and a reasoned argument can be made that their composition is likely to be identical further physical sampling was not undertaken.

Photographs were taken of all sample locations, unless otherwise stated.

The analysis of suspect ACMs was undertaken by a UKAS accredited laboratory using the analytical method detailed in *HSG248, Appendix 2 -Asbestos: The analysts' guide for sampling, analysis and clearance procedures*.

Document Name	Author	Issued by	Revision Number	Issue Date	Page No
2019	Kacey Lillis	Armour AS	0	06/11/2019	43

Section 8: Survey Caveat

This report is based upon a management report inspection of an unfamiliar site. During the course of the survey all reasonable efforts were made to identify the physical presence of materials containing asbestos within the building.

A Management Survey is a non-intrusive survey, meaning that access within the fabric of the building is limited. The survey does not include access to the following areas (unless agreed beforehand with the Client and provisions are put in place):

- Within wall or ceiling construction;
- Under fixed flooring;
- Within non-openable boxings;
- Within live electrics, boilers or machinery;
- Where access/visibility is limited in an area due to stored items, furniture or services;
- Areas where there is no safe access to inspect such as floor ducts, lift shafts and loft spaces with no crawlboards;
- High level areas that are too high to safely inspect.
- Within pipework insulation throughout building as this would affect the integrity of services.

Any intrusive works carried out within the building must first be subject to a Refurbishment Asbestos Survey.

This report will be restricted to the areas that fall within the scope of works for project and will not take into account any area's that do not fall within the scope. Any asbestos that is identified within this report will need to be added to the buildings existing information and should not form the basis for a management survey. This survey will not include priority assessments nor will it include a register.

This survey considered the construction of the building, associated fixtures & fittings and associated structures and in no way should it be considered as a ground investigation report.

Services should be disconnected prior to commencement of a Management survey; however, where plant and/or electrical installations are live or appear to be live then these will not be accessed.

This survey report is not a bill of quantities.

Document Name	Author	Issued by	Revision Number	Issue Date	Page No
2019	Kacey Lillis	Armour AS	0	06/11/2019	44

Section 9: Survey Notes

This report has been written with reference to the various Guidance Notes etc, issued, and current at the date of this report and describes circumstances at the site on the date the investigation took place.

Where similar items exist in the building, only one or two samples have been taken to ascertain the material content. It was assumed that similar products were of the same material.

Any person undertaking work within the buildings should be told of the presence of asbestos. This briefing also applies to any other person associated with the site, including staff, sub-contractors and others.

The drawings in the report are not to scale and are illustrative only to indicate approximate locations. The descriptions used are for location identification purposes.

All the recommendations described in this report are based upon assumptions made after consideration of the type of material, condition of the material, its location, analysis result and type of use the area is thought to be subjected to. However, statutory authorities or others could require amendments based on local knowledge, change in legislation, change in use or indeed other conditions or criteria.

Samples taken from floor tiles (or similar material) may include a bitumen adhesive as part of the sample. It is known that some proprietary brands of bitumen have an asbestos content and this will be included as an integral part of the bulk sample unless otherwise stated.

Document Name	Author	Issued by	Revision Number	Issue Date	Page No
2019	Kacey Lillis	Armour AS	0	06/11/2019	45

Section 10: Material Assessment Algorithm

Variable	Score	Examples
Installation / Product type	1	Vinyl, 'Bakelite', Cement
	2	Asbestos insulating board, paper, rope
	3	Pipe insulation, spray coating, friable debris
Condition / damage	0	Good
	1	Slight / minor damage
	2	Moderate damage – breakage to surface treatment
	3	Major damage – smashed or exposed material
Surface treatment	0	Non-friable e.g. vinyl
	1	Enclosed insulation, encapsulated AIB
	2	Unsealed AIB, encapsulated insulation
	3	Unsealed insulation or spray coating
Asbestos type	1	Chrysotile
	2	Amosite & other amphiboles
	3	Crocidolite

The scores from each of the four sections are added together to produce a risk score:

Risk score	Risk assessment
10 or more	High risk
7 – 9	Medium risk
5 – 6	Low risk
4 & below	Negligible risk

Document Name	Author	Issued by	Revision Number	Issue Date	Page No
2019	Kacey Lillis	Armour AS	0	06/11/2019	46



Section 11: Certificates of Bulk Analysis



Our Ref: J176881 FI: 10
Your Ref: 2481
Date: 08/10/2019

ENVIROCHEM
Analytical Laboratories Ltd.
12 The Gardens
Broadcut, Fareham
Hampshire
PO16 8SS



Tel: (01329) 287777
Fax: (01329) 287755
www.envirochem.co.uk
office@envirochem.co.uk

Asbestos Fibre Identification Report

Client: Armour Analytical Services Ltd
Admirals Yard, Station Road, Patchway, Bristol, BS34 6LR
Site Address: Shepton Mallet Platoon, Somerset, BA4 5AR
Sampled By: Armour Analytical Services Ltd
Date sampled/received: 8th October 2019
Date analysed: 8th October 2019
Analyst/s: Bradley Travis
Analysis Location: 12 The Gardens, Broadcut, Fareham, Hampshire, PO16 8SS

ANALYTICAL PROCEDURE

Fibre identification was carried out in accordance with the documented 'in-house' method (2.01) based on the HSE Guidance Note HSG 248. These employed stereo microscopy, polarized microscopy and dispersion staining techniques.

RESULTS

Sample No.	Sample Ref.	Location	Asbestos Detected	Asbestos Type
DK/1	BS578892	Office 3 and CO Office - Lino flooring under carpet	No	
DK/2	BS578893	Classroom 5 - Panels behind heaters	No	
DK/3	BS578894	WC Lobby - Bitumen coating to metal pipe	Yes	Chrysotile
DK/4	BS578895	Kitchen - Cement wall panels	Yes	Chrysotile

NOTES:

1. Sample(s) were examined for the presence of 6 types of asbestos fibre: crocidolite (blue), amosite (brown), chrysotile (white), actinolite, anthophyllite and tremolite.
2. The results shown in this report specifically refer to the sample(s) listed as received unless otherwise stated and sample collected by the client are evaluated using information provided by the client. For samples collected by the client the date of receipt is deemed to be the same as the date sampled.
3. Envirochem is a UKAS accredited laboratory for sampling and identification of asbestos containing materials.
4. Conversely, observations and opinions are outside the scope of UKAS accreditation.
5. The analytical method in the HSG248 does not quantify the amount of asbestos present; therefore UKAS accreditation does not permit quantification.
6. If, during fibre identification, only 1 or 2 fibres are seen and identified as asbestos, then the term 'trace asbestos identified' is used.
7. This report shall not be reproduced except in full, without written approval of Envirochem.

SIGNATURE:

Authorised signatory

PRINT NAME: Frances Scott

Reg. No. 2378228 England. Registered Office: Envirochem, 12 The Gardens, Broadcut, Fareham, Hampshire, PO16 8SS.

Page 1 of 3

Document Name	Author	Issued by	Revision Number	Issue Date	Page No
2019	Kacey Lillis	Armour AS	0	06/11/2019	47



ARMOUR
ANALYTICAL SERVICES



Our Ref: J176881 FI- 10
Your Ref: 2481
Date: 08/10/2019

ENVIROCHEM
Analytical Laboratories Ltd.
12 The Gardens
Broadcut, Fareham
Hampshire
PO16 8SS



Tel: (01329) 287777
Fax: (01329) 287755
www.envirochem.co.uk
office@envirochem.co.uk

Asbestos Fibre Identification Report

Client: Armour Analytical Services Ltd
Admiral's Yard, Station Road, Patchway, Bristol, BS34 6LR

Site Address: Shepton Mallet Platoon, Somerset, BA4 5AR

Sampled By: Armour Analytical Services Ltd

Date sampled/received: 8th October 2019

Date analysed: 8th October 2019

Analyst/s: Bradley Travis

Analysis Location: 12 The Gardens, Broadcut, Fareham, Hampshire, PO16 8SS

ANALYTICAL PROCEDURE

Fibre identification was carried out in accordance with the documented 'in-house' method (2.01) based on the HSE Guidance Note HSG 248. These employed stereo microscopy, polarized microscopy and dispersion staining techniques.

RESULTS

Sample No.	Sample Ref.	Location	Asbestos Detected	Asbestos Type
DK/5	BS578896	Kitchen - Panel behind boiler	No	
DK/6	BS578897	Armoury - Wall panel	Yes	Chrysotile
DK/7	BS578898	Armoury - Cement pipe	Yes	Chrysotile
DK/8	BS578899	External to Range - Cement roof tiles	Yes	Chrysotile

NOTES:

1. Sample(s) were examined for the presence of 6 types of asbestos fibre: crocidolite (blue), amosite (brown), chrysotile (white), actinolite, anthophyllite and tremolite.
2. The results shown in this test report specifically refer to the sample(s) tested as recorded unless otherwise stated and samples collected by the client are evaluated using information provided by the client. For samples collected by the client the date of receipt is stated on the test report as the date sampled.
3. Identification is a UKAS accredited laboratory for sampling and identification of asbestos containing materials.
4. Comments, observations and opinions are outside the scope of UKAS accreditation.
5. The analytical method in the PROCAF does not quantify the amount of asbestos present, therefore UKAS accreditation does not permit quantification.
6. If, during fibre identification, only 1 or 2 fibres are seen and identified as asbestos, then the test result asbestos identified is used.
7. This report shall not be reproduced except in full, without written approval of Envirochem.

SIGNATURE:

Authorized signatory

PRINT NAME: Frances Scott

Reg. No. 2378228 England. Registered Office: Envirochem, 12 The Gardens, Broadcut, Fareham, Hampshire, PO16 8SS.

Page 2 of 3

Document Name	Author	Issued by	Revision Number	Issue Date	Page No
2019	Kacey Lillis	Armour AS	0	06/11/2019	48



ARMOUR
ANALYTICAL SERVICES



Our Ref: J176881 FI: 10
Your Ref: 2481
Date: 08/10/2019

ENVIROCHEM
Analytical Laboratories Ltd.
12 The Gardens
Broadcut, Fareham
Hampshire
PO16 8SS



Tel: (01329) 287777
Fax: (01329) 287755
www.envirochem.co.uk
office@envirochem.co.uk

Asbestos Fibre Identification Report

Client: Armour Analytical Services Ltd
Admirals Yard, Station Road, Patchway, Bristol, BS34 6LR
Site Address: Shepton Mallet Platoon, Somerset, BA4 5AR
Sampled By: Armour Analytical Services Ltd
Date sampled/received: 8th October 2019
Date analysed: 8th October 2019
Analyst/s: Bradley Travis
Analysis Location: 12 The Gardens, Broadcut, Fareham, Hampshire, PO16 8SS

ANALYTICAL PROCEDURE

Fibre identification was carried out in accordance with the documented 'in-house' method (2.01) based on the HSE Guidance Note HSG 248. These employed stereo microscopy, polarized microscopy and dispersion staining techniques.

RESULTS

Sample No.	Sample Ref.	Location	Asbestos Detected	Asbestos Type
DE/9	BS578900	External to Store - Cement underclanking	No	
DE/10	BS578901	Range - Insulation board wall panel	Yes	Chrysotile

NOTES:

1. Sample(s) were examined for the presence of 8 types of asbestos fibres: amphibole (blue), crocidolite (green), chrysotile (white), actinolite, anthophyllite, actinolite and tremolite.
2. The results shown in this test report specifically refer to the sample(s) tested as recorded unless otherwise stated and sample collected by the client are evaluated using information provided by the client. For sample collected by the client the date of receipt is stated on the test as the date of sample.
3. Envirochem is a UKAS accredited laboratory for sampling and identification of asbestos containing materials.
4. Chemical, observational and evidence are outside the scope of UKAS certification.
5. The analytical method in the HSG248 does not quantify the amount of asbestos present, therefore UKAS accreditation does not permit quantification.
6. If, during fibre identification, only 1 or 2 fibres are seen and identified as asbestos, then the term 'few asbestos identified' is used.
7. This report shall not be reproduced except in full, without written approval of Envirochem.

SIGNATURE:

Authorised signatory

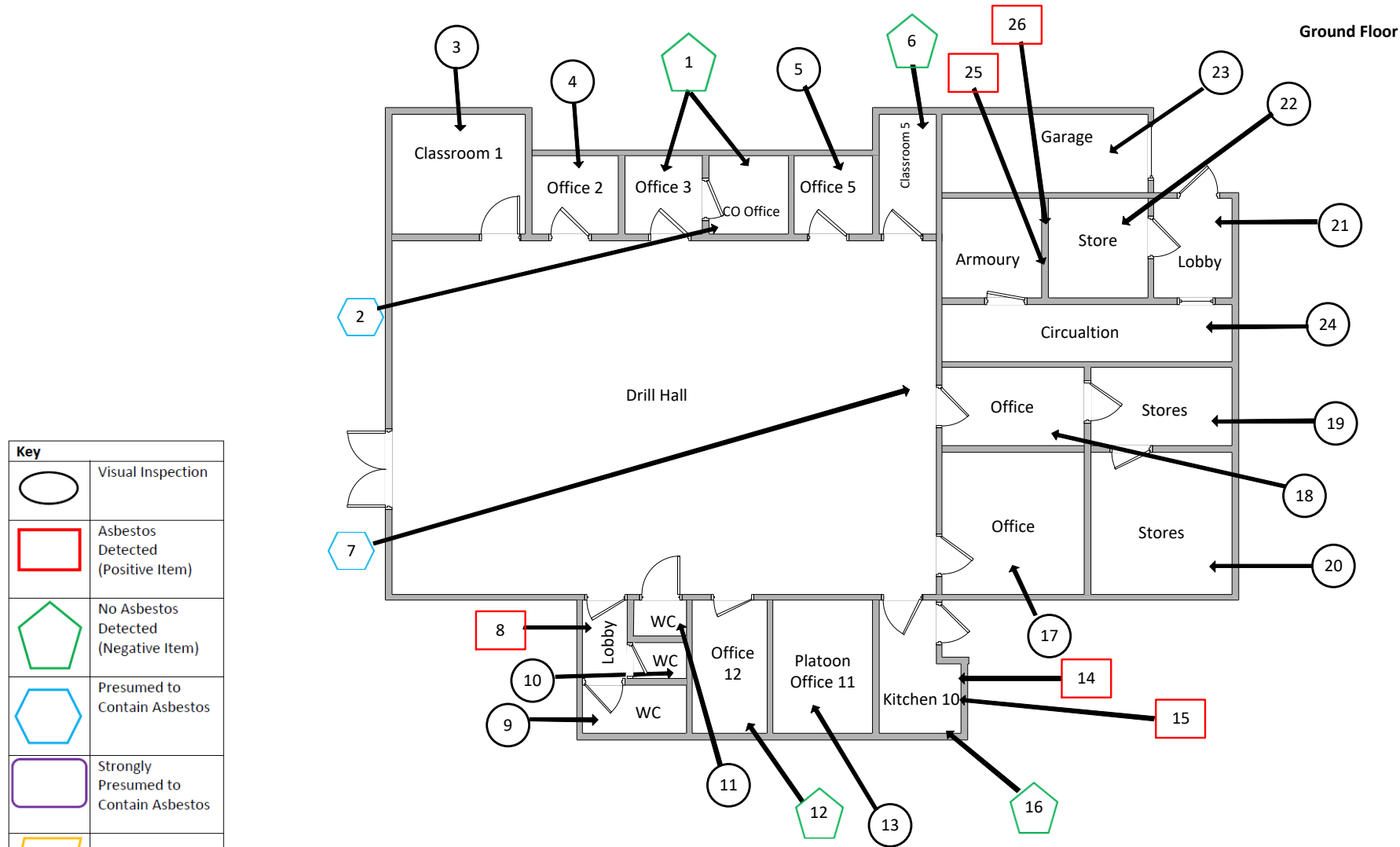
PRINT NAME: Francis Scott

Reg. No. 2378228 England. Registered Office: Envirochem, 12 The Gardens, Broadcut, Fareham, Hampshire, PO16 8SS.

Page 3 of 3

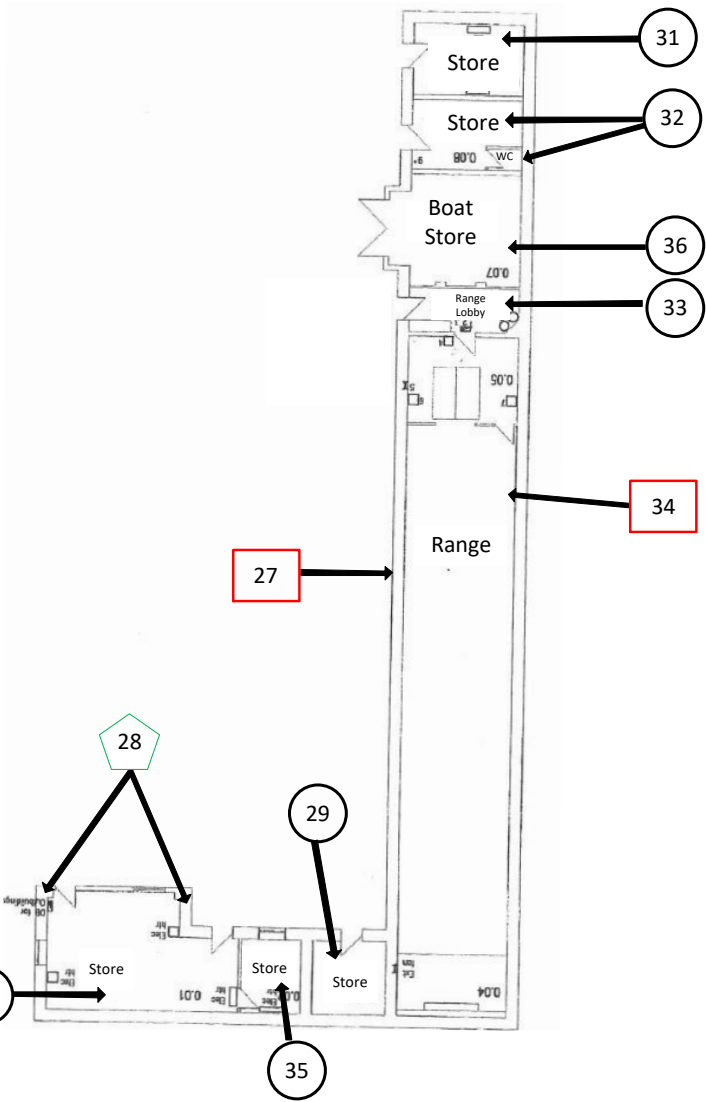
Document Name	Author	Issued by	Revision Number	Issue Date	Page No
2019	Kacey Lillis	Armour AS	0	06/11/2019	49







Section 12: Site Plan



Document Name	Author	Issued by	Revision Number	Issue Date	Page No
2019	Kacey Lillis	Armour AS	0	06/11/2019	50

Ground Floor



Key	
	Visual Inspection
	Asbestos Detected (Positive Item)
	No Asbestos Detected (Negative Item)
	Presumed to Contain Asbestos
	Strongly Presumed to Contain Asbestos
	No Access

Document Name	Author	Issued by	Revision Number	Issue Date	Page No
2019	Kacey Lillis	Armour AS	0	06/11/2019	51

I the surveyor can confirm that this report is accurate to my findings onsite and this survey has been Content checked by myself.

Checked by: David Kelly

Date: 05/11/2019

I the Admin Manager can confirm that this report is accurate to the paperwork received and this survey has been quality checked by myself.

Checked by: Emma Humphreys

Date: 06.11.2019

Report Compiled By

Armour Analytical Services Ltd, Admirals Yard, Station Road, Bristol, BS34 6LR

Document Name	Author	Issued by	Revision Number	Issue Date	Page No
2019	Kacey Lillis	Armour AS	0	06/11/2019	52