



**Defence  
Infrastructure  
Organisation**

**Gas Safety Management Plan  
(Section A)**

**Yeovil ACF**

**29/04/2025**

**Produced to meet the requirements of the Gas Safety  
(Installation and Use) Regulations 1998**

Unique Document Reference:  
WX101-A-20221027  
Issued by DIO TS PGE

Establishment: Yeovil ARC ACF

## ESTABLISHMENT KEY PERSONALITIES (GAS) CONTACTS

Role	Name	Tel No.	Email
Head of Establishment	Neville Holmes MBE	01823 217930 07850 655017	<a href="mailto:wx-ce@rfca.mod.uk">wx-ce@rfca.mod.uk</a>
Establishment's SHEF	James Kenworthy	01823 792670 07850 024699	<a href="mailto:wx-som-cqm@rfca.org.uk">wx-som-cqm@rfca.org.uk</a>
Establishments 4C's Coordinator	Mark DaNobrega	07775 697326	<a href="mailto:wx-som-ncoy@rfca.org.uk">wx-som-ncoy@rfca.org.uk</a>
Senior DIO Estate Representative or Equivalent	Mark Cubitt	01823 217949 07955 280440	<a href="mailto:wx-est-hd@rfca.mod.uk">wx-est-hd@rfca.mod.uk</a>
Site DIO Estate Representative or Equivalent	Rory Simpson	07957 436139	<a href="mailto:wx-est-mgr1@rfca.mod.uk">wx-est-mgr1@rfca.mod.uk</a>
MMO Site Manager or equivalent	Paul Wakeford	07356 101565	<a href="mailto:paul.wakeford@vivodefence.com">paul.wakeford@vivodefence.com</a>
Gas Safety Manager (GSM)	Justin Westcott	07793222820	<a href="mailto:Justin.Westcott@vivodefence.com">Justin.Westcott@vivodefence.com</a>
Gas Responsible Person (GRP)	Riona Moroney	07854053184	<a href="mailto:Riona.moroney@vivodefence.com">Riona.moroney@vivodefence.com</a>

The Content of this Gas Safety Management Plan (GSMP) have been Approved by the Gas Safety Manager:

Signature: *JP Westcott*

Date: 29/04/2025

### Authorisation for Implementation

The content and format of this GSMP has been agreed and authorised for implementation by Defence Infrastructure Organisation Technical Services Principal Gas Engineer (DIO TS PGE) and a unique reference number has been generated to support this.

**Approved – J Obbard PGE – 27<sup>th</sup> Oct 2022**

The Content of this GSMP have been agreed by the Senior DIO Estate Representative or Equivalent and future works following the findings will be supported:

Signature:

*M Cubit*

Date: 27/06/2025

The content of this GSMP have been agreed by the Head of Establishment and future works following the findings will be supported

Signature:

*N Holmes*

Date: 27/06/2025

Unique Document Reference:  
WX101-A-20221027  
Issued by DIO TS PGE

Establishment: Yeovil ARC ACF

## REVIEWS AND AMMENDMENTS

GSMPs are 'living documents' that should be subject to continual review and updating as required. Although the level of attention required will vary considerably depending on the size and complexity of each site, GSMPs should be reviewed at least once per quarter by the GRP, unless otherwise agreed by the PGE. Although it is likely that changes are not required at each review, the date of review and any changes made should be indicated on the tables below. The review of the GSMP will include a site visit to ensure that the site and the content of the GSMP remain valid. The reviews and amendments made will be deleted during the DIO TS three yearly review when the GSMP is re-authorised by the PGE.

Date	Page No.	Amendment
20/04/2022	All	Initial Development
28/07/2022	N/A	No amendment required
28/10/2022	N/A	No amendment required
27/01/2023	N/A	No amendment required
27/04/2023	N/A	No amendment required
27/07/2023	N/A	No amendment required
27/10/2023	N/A	No amendment required
18/01/2024	N/A	No amendment required
26/04/2024	ii and 1	Updated HoE details
26/04/2024	10	6.1 Added note to equipment list for cadet house boiler
18/10/2024		GSM re-authorisation (previously authorised 28/04/2022)
28/10/2024	ii	Updated SHEF and Senior DIO Estate Representative details
28/10/2024	2	Updated Senior DIO Estate Representative details
14/01/2025	ii	Updated Establishments 4C's Coordinator telephone number
19/02/2025	ii	Update GSM & GRP Contact details
19/02/2025	All	Update literature to reflect Vivo as MMO.

Date	Reviewed by	Authorised by	Comments
28/04/2022	D Cooper	N King	Initial review
28/07/2022	D Cooper		Q1 review
28/10/2022	D Cooper		Q2 review
27/01/2023	D Cooper		Q3 review
27/04/2023	D Cooper		Annual review
27/07/2023	D Cooper		Q1 review
27/10/2023	D Cooper		Q2 review
18/01/2024	D Cooper		Q3 review
26/04/2024	D Cooper		Annual review site visit
18/10/2024	Neville King	Neville King	GSM re-authorisation
28/10/2024	D Cooper		Q1 review
14/01/2025	D Cooper		DNV demobilisation review
29/04/2025	R Moroney	J Westcott	Quarterly Review
29/04/2025	J Westcott	J Westcott	Initial review/approval

Unique Document Reference:  
WX101-A-20221027  
Issued by DIO TS PGE

Establishment: Yeovil ARC ACF

---

## FORWARD

MOD, as a gas conveyor within Great Britain, has submitted an Exemplar Gas Safety Case (MOD GSC) to demonstrate compliance with the Gas Safety (Management) Regulations 1996 (GS(M)R). Maintenance Management Organisations (MMO's) are engaged who have the overall contractual responsibility to operate and maintain the gas network assets under their Contract, including the management of the safe flow of gas within the system and the provision of an emergency service. The MOD delegate specific duties to the MMO but accountability for gas safety on each site rests with the Head of Establishment.

Whilst gas downstream of the Emergency Control Valve (ECV) fall outside of the scope of (GS(M)R) similar criteria as those referred to above must be accommodated within an appropriate management system. The specific criteria required to adequately manage gas infrastructure downstream of the ECV are described in the Gas Safety (Installation and Use) Regulations 1998 (GS(IU)R).

The MOD GSC considers all parts of the MOD estates gas supply system that forms part of the gas supply network. This includes all parts of the MOD gas network from the Bulk Primary Meter Installation to the individual gas appliances and the safe release of the products of combustion. The MOD GSC considers primarily those matters that relate to the management of the safe flow of gas within the system and the provision of an emergency service for all aspects of the gas system.

Following initial approval of the Gas Safety Management Plans (GSMPs) by the DIO Principal Gas Engineer (PGE), the Gas Safety Manager (GSM) is required to reapprove this GSMP annually. GSMPs must be submitted to DIO PGE every three years for authorisation.

GSMP Section A document contains site specific details of the establishments utilisation infrastructure to assist with measures to ensure compliance with the GS(IU)R for installation pipework and associated components.

GSMP Section B documents contain site specific details and arrangements as a direct annex to the MOD GSC in line with the Gas Safety (Management) Regulations 1996 (GS(M)R).

GSMP Section C document contains site specific details and requirements of the establishment's LPG networks.

Although the legal status of this document applies in the UK only, the MOD apply the same requirements to the management of gas on its overseas estate, in accordance with the currently published Secretary of State's Health and Safety policy statement.

## Contents

<b>ESTABLISHMENT KEY PERSONALITIES (GAS) CONTACTS .....</b>	<b>II</b>
<b>REVIEWS AND AMMENDMENTS .....</b>	<b>III</b>
<b>FORWARD.....</b>	<b>IV</b>
<b>1 THE DUTY HOLDER AND ESTABLISHMENT LEVEL KEY PERSONALITIES.....</b>	<b>1</b>
1.1. GAS SAFETY CASE DUTY HOLDER.....	1
1.2. DIO TECHNICAL SERVICES PRINCIPAL GAS ENGINEER (PGE). ....	1
1.3. ESTABLISHMENT PERSONALITIES.....	1
1.4. MAINTENANCE MANAGEMENT ORGANISATION (MMO).....	2
1.5. ADDITIONAL GAS CONTACTS. ....	2
<b>2 SITE SPECIFIC DETAILS.....</b>	<b>4</b>
2.1 SITE OVERVIEW. ....	4
2.2 NATURAL GAS.....	4
2.3 LPG GAS. ....	5
2.4 EXTERNAL INSTALLATION PIPEWORK. ....	5
2.5 DETAILS OF BUILDINGS SERVED.....	5
2.6 ADDITIONAL DETAILS OF BUILDINGS BEING SERVED.....	5
<b>3 METER DETAILS .....</b>	<b>6</b>
3.1 PRIMARY METER DETAILS.....	6
3.2 UTILISATION METER DETAILS. (METERS SUPPLIED DIRECTLY FROM THE MOD GAS NETWORK) .....	6
<b>4 DIAGRAMS AND DRAWINGS.....</b>	<b>7</b>
4.1 LINE DIAGRAMS FOR BUILDING(S) INTERNAL GAS INSTALLATION PIPEWORK. ....	7
4.2 ADDITIONAL DRAWINGS. ....	7
<b>5 GAS INCIDENTS.....</b>	<b>8</b>
5.1 SITE REPORTING PROCEDURES FOR DEALING WITH GAS INCIDENTS.....	8
<b>6 GAS EQUIPMENT .....</b>	<b>9</b>
6.1 EQUIPMENT LIST.....	9
6.2 ADDITIONAL EQUIPMENT INFORMATION.....	9
<b>7 ANNEXES .....</b>	<b>10</b>

Unique Document Reference:  
WX101-A-20221027  
Issued by DIO TS PGE

Establishment: Yeovil ARC ACF

## 1 THE DUTY HOLDER AND ESTABLISHMENT LEVEL KEY PERSONALITIES

### 1.1. Gas Safety Case Duty Holder.

The duty holder for the MOD Gas Safety Case is the Permanent Under Secretary for Defence (PUS). However, day to day responsibility for the preparation and maintenance of the document is delegated to the DIO TS Head of Engineering and Construction, who also has the responsibility for managing the system in accordance with the Safety Case. PUS delegates maintenance responsibility to the Top-Level Budget Holders (TLB's), to manage safety of the gas network. The TLB's utilise MOD Contracts i.e., MMOs who have responsibility for maintaining the gas network on behalf of the MOD.

Name:	Permanent Under Secretary
Address:	Main Building Horse Guards Parade Whitehall London SW1A 2HB

### 1.2. DIO Technical Services Principal Gas Engineer (PGE).

The PGE assumes the role of Senior Authorising Authority which is a term used within the MOD to recognise the authority of the person responsible for overseeing the appointment of, and auditing Authorising Engineers (AEs). For Gas, the AEs are replaced by Gas Safety Managers (GSMs).

Name:	Jeremy Obbard
Address:	DIO HQ Whittington Barracks Lichfield WS14 9TJ
☎:	07748 903260
✉:	Jeremy.obbard100@mod.gov.uk

### 1.3. Establishment Personalities.

Name of Establishment:	Yeovil ARC ACF	
Establishment Address:	Southville Road, Yeovil, Somerset, BA21 4JA.	
Head of Establishment (HoE)  (This is the most senior MOD person identified, by the chain of command, as responsible for the establishment. The HoE holds accountability for ensuring site compliance with the requirements of GSMR and the MOD GSC, including this GSMP.)	Name: Position: Organisation: Address:        ☎: ✉:	Neville Holmes MBE Chief Executive Officer MoD Mount House Mount Street Taunton Somerset TA1 3QE  Tel: 01823 217930 Mob: 07850 655017 <a href="mailto:wx-ce@rfca.mod.uk">wx-ce@rfca.mod.uk</a>
Senior DIO representative or equivalent  (This may be the SEFM, but will vary depending on the contract this establishment falls under)	Name: Position: Organisation:  Address:     ☎:	Mark Cubitt Head of Estates Wessex Reserve Forces' and Cadets' Association  Mount House Mount Street Taunton Somerset TA1 3QE 01823 217949 Mob: 07955 280440

Unique Document Reference:  
WX101-A-20221027  
Issued by DIO TS PGE

Establishment: Yeovil ARC ACF

	✉: <a href="mailto:wx-est-hd@rfca.mod.uk">wx-est-hd@rfca.mod.uk</a>
--	---

#### 1.4. Maintenance Management Organisation (MMO).






The MMO for this establishment is: <b>VIVO Defence Services</b>	
Gas Emergency Helpdesk (Typically, MMO Helpdesk) (24 Hours)  <b>Note:</b> Please do not contact the general public National Gas Emergency Service for suspected gas escapes on RFCA infrastructure.	Organisation: VIVO Helpdesk Helpdesk 25 Goodlass Road Hunts Cross Liverpool L24 9HJ  ☎: 0800 030 9320
Gas Safety Manager (GSM)	Name: Justin Westcott Organisation: VIVO Defence Services Address: Building 003 CTCRM Lympstone NR Exmouth Devon EX8 5AR  ☎: 07793 222820 ✉: Justin.Westcott@vivodefence.com
Gas Responsible Person (GRP)	Name: Riona Moroney Organisation: VIVO Defence Services Address: Building 003 CTCRM Lympstone NR Exmouth Devon EX8 5AR  ☎: 07845053184 ✉: Riona.Moroney@vivodefence.com

#### 1.5. Additional Gas Contacts.

External Gas Distribution Network (EGDN)	Organisation: Wales and West Utilities Address: WWU House Spooners Close Celtic Springs Coedkernew Newport NP10 8FZ  ☎: 0800 912 2999 ✉: <a href="mailto:enquiries@wwutilities.co.uk">enquiries@wwutilities.co.uk</a>
Gas Supplier	Organisation: TotalEnergies Gas & Power Address: 55-57 High Street, Redhill, Surrey, RH1 1RX.  ☎: 01737 275 746 ✉: <a href="mailto:gp.redhill.ccs@totalenergies.com">gp.redhill.ccs@totalenergies.com</a>
LPG Supplier	Organisation: Not Applicable, no bulk LPG on site. Address:

Unique Document Reference:  
WX101-A-20221027  
Issued by DIO TS PGE

Establishment: Yeovil ARC ACF

	 :  :	
Meter Asset Manager (MAM)	Organisation: Address:   :  :	Energy Assets Ltd 6 Almondvale Business Park, Almondvale Way, Livingston EH54 6GA 01506 405405 <a href="mailto:ralphreekie@energyassets.co.uk">ralphreekie@energyassets.co.uk</a>
National Gas Emergency Centre (24 Hours)	 :	0800 111 999



## 2 SITE SPECIFIC DETAILS

### 2.1 Site Overview.

A brief description of the establishment and its current use. This should include how many separate sites are present and the number of buildings being supplied by gas.

Yeovil ARC ACF has two buildings on site supplied with gas. One being the main ACF building, and the other is the Cadet House with gas being supplied direct from the EGDN network at low pressure. Each building has its own MAM owned and operated low pressure gas meter and regulator.

This site is utilised (parade) on Mondays and Thursdays 19:00 – 21:00 by Somerset ACF (Yeovil Detachment).

### 2.2 Natural Gas.

A brief description of the natural gas installations, including how many MOD networks are present, the number of buildings each MOD network supplies and how many buildings are supplied direct from the EGDN. This should also include any demarcations in place between stakeholders and responsibilities.

#### Main Building

The gas supply to this building is fed direct from the EGDN network. There is a 25 mm PE service riser on the outside of the building which transitioning to 1" steel before entering the building to supply an internal low pressure (21.2mb) MAM owned and operated meter and regulator.

The installation pipework leaves the meter in the rifle range and travels through classrooms and drill hall before entering the plant room. This pipework is 50mm screwed steel throughout its length.

#### Cadet House

The gas supply to this building is fed direct from the EGDN network. There is a 1" steel service riser on the outside of the building which enters the building at low level to supply a low pressure (22mb) MAM owned and operated meter and regulator.

The installation pipework leaves the meter in 22mm copper pipe and rises internally and continues to the first floor in 22mm copper to feed a gas boiler.

Unique Document Reference:  
WX101-A-20221027  
Issued by DIO TS PGE

Establishment: Yeovil ARC ACF

### 2.3 LPG Gas.

A brief description of the LPG installations, including how many compounds are at the establishment, condition and make up of each compound, the number and size (kg) of vessels in each compound, the number of LPG MOD networks, the number of buildings supplied from the LPG MOD networks, how many buildings are supplied direct and not from an LPG MOD network. Details of the LPG pipework after the first stage regulator up to the building(s).

*Note: The demarcation agreement between the LPG supplier and the MOD has been agreed and the MOD take responsibility from the outlet of the first stage regulator. The LPG supplier is responsible for the vessel, vessel associated components (excluding any earth bonding) pipework up to and including the first stage regulator.*

No LPG on this establishment

### 2.4 External Installation Pipework.

A brief description of the external installation pipework (above or below ground) on each building. This is from the ECV to where it enters the building(s), the material, diameter, lengths, supports, conditions etc.

There is not any external installation pipework at this site.

### 2.5 Details of buildings served.

A list of the buildings being supplied by gas via an MOD network, LPG compound or directly from the EGDN and the usage of the gas (catering, hot water, heating, fire training, etc) at the building.

Ser	Building Number	Building description	Supplied by	Gas usage
1	Main Building	Office space, meeting rooms, rifle range, store, and drill hall.	EGDN	Heating and hot water
2	Cadet House	Meeting rooms	EGDN	Heating and hot water
3				
4				
5				

### 2.6 Additional details of buildings being served.

Any additional detail about a building that may be required or useful in an emergency or requires more details than captured above.

*NOTE: This section is to be used to capture the Service Family Accommodation (SFA) properties where it is not practical to fit above.*

No SFA property.

Unique Document Reference:

Establishment: Yeovil ARC ACF

WX101-A-20221027

Issued by DIO TS PGE

**3 METER DETAILS****3.1 Primary Meter Details.**

The following table describes the basic arrangement of the primary meter installation(s). (These are the responsibility of the MAM)

*NOTE: More detail on the primary meters that supply MOD networks can be seen in the GSMP part B.*

Number of primary meter installations:		2 (EGDN Single Supply)							
Meter Name / ID	MPRN	Supplying (MOD network ID or Building number)	location	Incoming pressure tier – HP, IP, MP, LP	Outlet pipeline				Max Flow (M <sup>3</sup> hr)
					P tier – HP, IP, MP, LP	Pressure (mbar)	Material	Diameter (mm)	
G16- K04446 14 D6	3810208	1 main building	Rifle range	LP	LP	21.2	Steel	50	25
G4 – K3059194 12 01	4232805410	2 Cadet House	Entrance	LP	LP	22	copper	22	6

**3.2 Utilisation Meter Details.** (meters supplied directly from the MOD gas network)

The following table describes the basic arrangement of the utilisation meter installation(s). (These are the responsibility of the MOD)

Number of utilisation meter installations:		N/A – No utilisation meter on Site								
Meter Name / ID	Being supplied from (MOD network ID)	Inlet pipeline				Outlet pipework				Max Flow (M <sup>3</sup> hr)
		P tier – HP, IP, MP, LP	Pressure (mbar)	Material	Diameter (mm)	P tier – HP, IP, MP, LP	Pressure (mbar)	Material	Diameter (mm)	

Unique Document Reference:  
WX101-A-20221027  
Issued by DIO TS PGE


Establishment: Yeovil ARC ACF

#### 4 DIAGRAMS AND DRAWINGS

##### 4.1 Line diagrams for building(s) internal gas installation pipework.

This section is to contain line diagrams for building internal installation pipework and associated components. This diagram should be fixed to the building at a practical and accessible location as well as within any associated document centres. It may be embedded as a PDF to this document for online use.

*NOTE: Drawings are only required for commercial installations or for installation in commercial settings (non-domestic use). This may mean more installations than listed in IGEM/UP/2 Edition 3 (4.2.14), depending on the installations intended use.*

Drawing Number	Building	Comments
WX101-A-A3	Main Building and Cadet House	 WX101-A-A3.pdf

##### 4.2 Additional drawings.

This section is to contain any additional drawings that may be required or may be of benefit to this GSMP or emergency procedures.

Drawing Number	Building	Comments

---

## 5 GAS INCIDENTS

### 5.1 Site reporting procedures for dealing with gas incidents.

This section is to contain the establishment's site-specific procedure for dealing with reports of gas incidents with regards the external installation pipework, internal installation pipework and equipment. Details of all individuals with responsibilities under this procedure should be included.

- Call RFCA National Gas Emergency line on 0800 030 9320, open 24 hours per day.
- The EGDN shall attend and make safe a gas incident.
- Vivo Gas Responsible Person shall be informed immediately via text and email.

Unique Document Reference:  
WX101-A-20221027  
Issued by DIO TS PGE

Establishment: Yeovil ARC ACF

## 6 GAS EQUIPMENT

### 6.1 Equipment List.

This section is to include details of all the gas equipment being used at the establishment.

Building number	Equipment location	Equipment type (make, model)	Serial Number	Appliance kW rating	Flue classification	Comments
1	Plantroom	Vaillant boiler ecoTec plus (1)	21160800178200006005254N3	67.7	Fan flued	
1	Plantroom	Vaillant boiler eco Tec plus (2)	21160700100178200006005238N1	67.7	Fan flued	
2	Classroom 3	Baxi combi 105 HE	ACK20639	30	Fan flued	Boiler requires DHW switch, gas turned off at boiler and meter.

### 6.2 Additional equipment information.

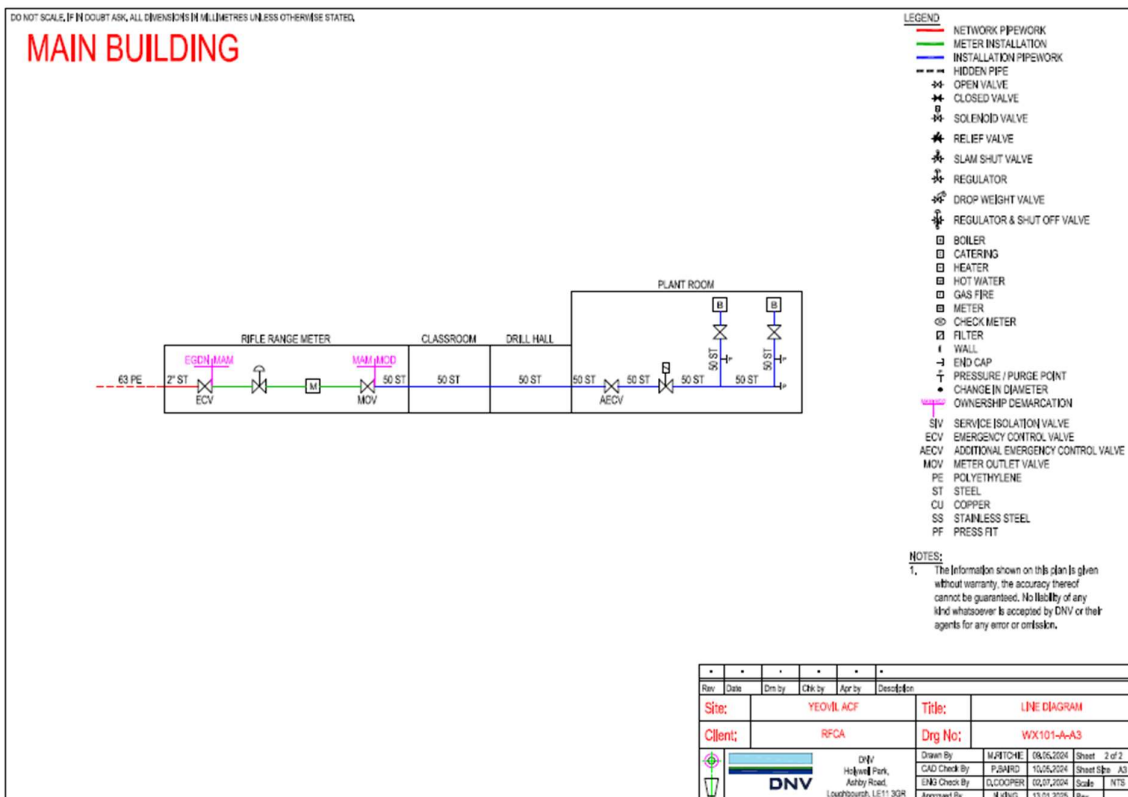
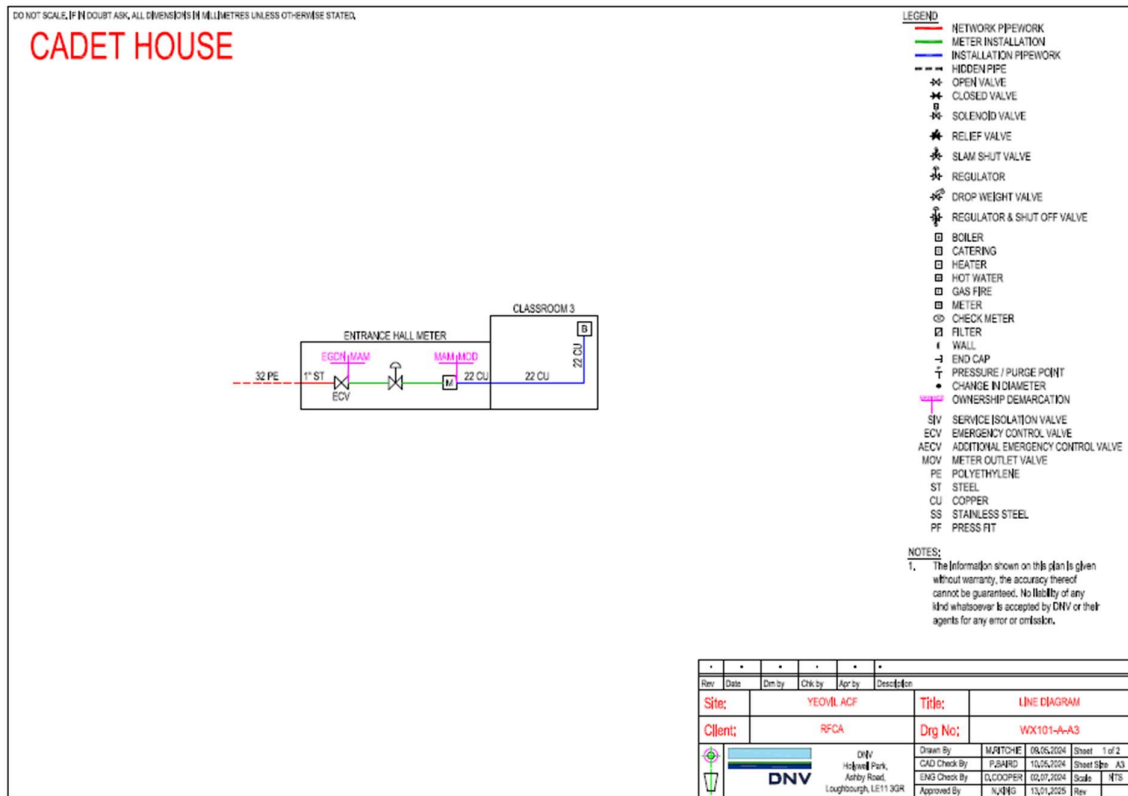
This section is to contain any additional equipment information that may be required or may be of benefit to this GSMP or emergency procedures.

The main building has an inline solenoid valve in the plant room, which is believed to be fire alarm linked, unable to validate and test.

Unique Document Reference:  
WX101-A-20221027  
Issued by DIO TS PGE

Establishment: Yeovil ARC ACF

## 7 ANNEXES



Unique Document Reference:  
WX101-A-20221027  
Issued by DIO TS PGE

Establishment: Yeovil ARC ACF

---