

**Project Number A-00520 (3700)**

**Re-Inspection  
Asbestos Survey Report - Revised**

**6th Battalion The Rifles C  
Poundbury Road  
Dorset  
DT1 1TA**



Working in Partnership with Shield Services Group



Document Name	Author	Issued by	Revision Number	Issue Date	Page No
2021	David Kelly	Armour AS	1	20/10/2021	1

## **Contents**

<b>Section</b>	
<b>1</b>	<b>Contact Details</b>
<b>2</b>	<b>Executive Summary</b>
<b>3</b>	<b>Site Description &amp; Survey Information</b>
<b>4</b>	<b>Positive, Presumed or No Access Items</b>
<b>5</b>	<b>Negative Photos Sheets</b>
<b>6</b>	<b>Survey Objectives</b>
<b>7</b>	<b>Survey Notes</b>
<b>8</b>	<b>Material Assessment Algorithm</b>
<b>9</b>	<b>Certificates of Bulk Analysis</b>
<b>10</b>	<b>Site Plan</b>

Document Name	Author	Issued by	Revision Number	Issue Date	Page No
2021	David Kelly	Armour AS	1	20/10/2021	2

## **Section 1: Contact Details**

<b>Client Details:</b>		<b>Instructing Party:</b>	
Wessex RFCA Mount House Mount Street Taunton TA1 3QE		Wessex RFCA Mount House Mount Street Taunton TA1 3QE	
<b>Contact Name:</b>	Kelvin Walker	<b>Contact Name:</b>	Kelvin Walker
<b>Tel:</b> 01823 250 116	<b>Fax:</b> N/A	<b>Tel:</b> 01823 250 116	<b>Fax:</b> N/A

<b>Site Address:</b>		<b>Report Author:</b>	
6th Battalion the Rifles C Poundbury Road Dorset DT1 1TA		Armour Analytical Services Admirals Yard Station Road Bristol BS34 6LR	
<b>Contact Name:</b>	Kelvin Walker	<b>Contact Name:</b>	Andrea Bansee
<b>Tel:</b> 01823 250 116	<b>Fax:</b> N/A	<b>Mobile:</b> 07468 535 836	

<b>Lead Surveyor's Name:</b>	<b>Lead Surveyor's Authorising Signature:</b>
David Kelly	

Document Name	Author	Issued by	Revision Number	Issue Date	Page No
2021	David Kelly	Armour AS	1	20/10/2021	3

## **Section 2: Executive Summary**

Sample Number	Sample Type	Location	Analysis
DK/01	Sink Pad - Bituminous Product	First Floor Building 1 - Canteen 047	N.A.D.I.S

N.A.D.I.S – No Asbestos Detected in Sample

In addition to the above sampled items, the following items have been either been “Strongly Presumed” To Contain Asbestos or “Presumed” to Contain Asbestos as they were either visually identified in being so, labelled after previously being sampled on prior surveys or not accessible at the time of the survey:

Status	Sample Type	Location
Previously Sampled	Flat Sheet Cement Ceiling - Cement Product	Ground Floor Building 1 - Store 001
Previously Sampled	Panels to Doors - Insulating Board	Ground Floor Building 1 - Coms Store Lobby 002
Presumed	Components with Gas Heaters - Insulating Board	Ground Floor Building 1 - Drill Hall 003
Previously Sampled	Panels to Door - Insulating Board	Ground Floor Building 1 - Drill Hall 004
Previously Sampled	Adhesive under Lino Flooring - Bituminous Product	Ground Floor Building 1 - Locker Room 005
Previously Sampled	Fireplace Cover - Insulating Board	Ground Floor Building 1 - Locker Room 006
Presumed	Components with Boilers - Insulating Board	Ground Floor Building 1 - Boiler Room 007
Presumed	Safe Casings - Insulating Board	Ground Floor Building 1 - Boiler Room 008
Previously Sampled	Fireplace Cover - Cement Product	Ground Floor Building 1 - Classroom 009
Previously Sampled	Floor Tiles and Adhesive - Vinyl Products	Ground Floor Building 1 - ACF Classroom, WC, Office and Canteen 010
Previously Sampled	Ceiling Tiles - Insulating Board	Ground Floor Main Garage 019
Strongly Presumed	Bulk Head Panels - Insulating Board	Ground Floor Main Garage 020
Previously Sampled	Roof Sheets - Cement Product	Ground Floor MT Garage 023
Previously Sampled	Sink Pad - Bituminous Product	Ground Floor Building 18 - Kitchen 026
Presumed	Toilet Seat - PVC / Reinforced Plastics	Ground Floor Female Accommodation - WC 027

Document Name	Author	Issued by	Revision Number	Issue Date	Page No
2021	David Kelly	Armour AS	1	20/10/2021	4

Status	Sample Type	Location
Previously Sampled	Adhesive under Carpet - Bituminous Product	Ground Floor Building 16 - Bedroom 2 028
Presumed	Night Storage Heaters - No Access Gained	Ground Floor Building 15 - Conference Room and Cupboard 030
Presumed	Safe Casings - Insulating Board	Ground Floor Building 15 - Office 1 031
Previously Sampled	Floor Tiles and Adhesive - Vinyl Products	Ground Floor Receipts Building, Corridor, Office and Store 032
Previously Sampled	Floor Tiles and Adhesive - Vinyl Products	Ground Floor Receipts Building - Stores x 3 033
Previously Sampled	Fiberboard Ceiling - Paper Product	Ground Floor Male Accommodation - Bedroom 1 and 2 036
Previously Sampled	Floor Tiles and Adhesive - Vinyl Products	Ground Floor Male Accommodation - Bedroom 1 and 2 037
Previously Sampled	Wall Panels - Insulating Board	Ground Floor Male Accommodation - Bedroom 2, 3 and Lobby 038
Previously Sampled	Fiberboard Ceiling - Paper Product	Ground Floor Male Accommodation - WC/Shower 039
Previously Sampled	Fiberboard Ceiling - Paper Product	Ground Floor Male Accommodation - Bedroom 3 040
Previously Sampled	Floor Tiles and Adhesive - Vinyl Products	Ground Floor Male Accommodation - Bedroom 3 041
Presumed	Rope Seals to Skylights - Gaskets (rope/woven)	Ground Floor Building 1 - Drill Hall 042
Previously Sampled	Floor Tiles and Adhesive - Vinyl Products	Ground Floor Building 1 - ACF Rooms x 3 044
Previously Sampled	Door Header Panel - Insulating Board	First Floor Building 1 - Corridor 011
Presumed	Toilet Seat - PVC / Reinforced Plastics	First Floor Building 1 - Mens WC 012
Previously Sampled	Fireplace Cover - Insulating Board	First Floor Building 1 - Office 013
Presumed	Toilet Seat - PVC / Reinforced Plastics	First Floor Building 1 - Ladies WC 014
Presumed	Safe Casings - Insulating Board	First Floor Building 1 - PSI Office 015
Previously Sampled	Fireplace Cover - Insulating Board	First Floor Building 1 - Company Command Office 016
Previously Sampled	Fireplace Cover - Insulating Board	First Floor Building 1 - Recruit Office 017
Previously Sampled	Roof Tiles - Cement Product	External Building 1 018
Previously Sampled	Guttering and Downpipes - Cement Product	External MT Garage 021
Previously Sampled	Roof Sheets and Edging - Cement Product	External MT Garage 022

Document Name	Author	Issued by	Revision Number	Issue Date	Page No
2021	David Kelly	Armour AS	1	20/10/2021	5

Status	Sample Type	Location
Previously Sampled	Roof Sheets and Skylight Panels - Cement Product	External Range 024
Previously Sampled	Downpipes, Guttering and Debris - Cement Product	External Armoured Truck Garage 025
Strongly Presumed	Roof Tiles - Cement Product	External Building 16 029
Previously Sampled	Downpipe - Cement Product	External Receipts Building 034
Presumed	Undercloaking - Cement Product	External Receipts Building 035
Strongly Presumed	Roof Tiles - Cement Product	External Service Garage 048

The presence of asbestos in these areas cannot be ascertained at this time. If any works are to be carried out in these areas in the future, then these works should be approached cautiously.

In accordance with current legislation, any suspect materials encountered in these areas are to be assumed to contain asbestos until proven otherwise. This will normally involve cessation of works in the affected area.

Document Name	Author	Issued by	Revision Number	Issue Date	Page No
2021	David Kelly	Armour AS	1	20/10/2021	6

## Section 3: Site Description & Survey Information

### Brief description on the general building construction

Various brick building and steel frame buildings of varying age.

### Caveat for no access areas

All areas accessed.

### EXTERNAL MATERIALS

Roof Type	Pitched
Roof Materials	Cement Tiles, Profiled Cement, Profiled Metal, Felt
Soffits	Plastic, Timber, Supalux
Fascia	Timber
Walls	Brick, Metal, Timber
Verge Under cloaking	Cement
Guttering	Cement, Metal, Plastic
Downpipes	Cement, Metal, Plastic
Window/Door frames	Aluminum, UPVC, Timber
Other Materials	N/A

### INTERNAL MATERIALS

Loft Insulation	Fiberglass
Roof Underlining	Non-Asbestos Felt
Ceilings	Plasterboard, Concrete, Lath and Plaster, Asbestos Fibreboard
Walls <i>Internal</i>	Plasterboard, Brick, AIB, Supalux
Floors	Carpet, Lino, Tiles, Concrete
Doors/Frames	Timber, AIB
Pipework/Insulation	MMMF, Armaflex
Boxings	Plasterboard, Timber
Boiler Make	No Access Within Boilers
Flue Pipes	Metal
Storage Heaters	No Access Within Heaters
Electrical Boxes/Machinery	No Access Within Electrics
Ducting/Risers	Metal
Stairs	Timber
Lift Shafts	None
Other Materials	N/A

Document Name	Author	Issued by	Revision Number	Issue Date	Page No
2021	David Kelly	Armour AS	1	20/10/2021	7

## Section 4: Positive, Presumed or No Access Items

<b>Item No:</b>	<b>1</b>	<b>Sample No:</b>	<b>N/A</b>
<b>Location:</b>	Ground Floor - Building 1 - Store 001		



<b>Material Description:</b>	Flat Sheet Cement Ceiling - Cement Product	
<b>Identification:</b>	Previously Sampled - Asbestos Detected	
<b>Approx. quantity:</b>	16 m <sup>2</sup>	
<b>Accessibility</b>	Medium	Assessment Score
<b>Product type:</b>	Cement	1
<b>Extent of Damage:</b>	Slight / minor damage	1
<b>Surface Treatment:</b>	Unsealed Cement	1
<b>Asbestos type:</b>	Chrysotile	1
<b>Material Assessment Score:</b>		4
<b>Priority Assessment Score:</b>		Negligible
<b>Action:</b>	Encapsulate	
<b>Comments:</b>	Previously sampled ref: Armour 21/10/19 Sample DK/3	

Document Name	Author	Issued by	Revision Number	Issue Date	Page No
2021	David Kelly	Armour AS	1	20/10/2021	8



**Item No:** 2

**Sample No:** N/A

**Location:** Ground Floor - Building 1 - Coms Store Lobby 002



<b>Material Description:</b>	Panels to Doors - Insulating Board	
<b>Identification:</b>	Previously Sampled - Asbestos Detected	
<b>Approx. quantity:</b>	4 m <sup>2</sup>	
<b>Accessibility</b>	Easy	Assessment Score
<b>Product type:</b>	Asbestos Insulating Board	2
<b>Extent of Damage:</b>	Moderate damage	2
<b>Surface Treatment:</b>	Unsealed AIB	2
<b>Asbestos type:</b>	Amosite	2
<b>Material Assessment Score:</b>		8
<b>Priority Assessment Score:</b>		Medium
<b>Action:</b>	Encapsulate	
<b>Comments:</b>	Previously sampled ref: Armour 21/10/19 Sample DK/4. Several areas of slight damage	

Document Name	Author	Issued by	Revision Number	Issue Date	Page No
2021	David Kelly	Armour AS	1	20/10/2021	9

**Item No:** 3 **Sample No:** N/A

**Location:** Ground Floor - Building 1 - Drill Hall 003



<b>Material Description:</b>	Components with Gas Heaters - Insulating Board	
<b>Identification:</b>	Presumed to Contain Asbestos	
<b>Approx. quantity:</b>	6 no	
<b>Accessibility</b>	Difficult	<i>Assessment Score</i>
<b>Product type:</b>	Asbestos Insulating Board	2
<b>Extent of Damage:</b>	Major damage	3
<b>Surface Treatment:</b>	Unsealed Insulation	3
<b>Asbestos type:</b>	Amosite, Chrysotile	2
<b>Material Assessment Score:</b>		10
<b>Priority Assessment Score:</b>		High
<b>Action:</b>	Manage	
<b>Comments:</b>	No access within live heaters	

Document Name	Author	Issued by	Revision Number	Issue Date	Page No
2021	David Kelly	Armour AS	1	20/10/2021	10

**Item No:** 4 **Sample No:** N/A

**Location:** Ground Floor - Building 1 - Drill Hall 004

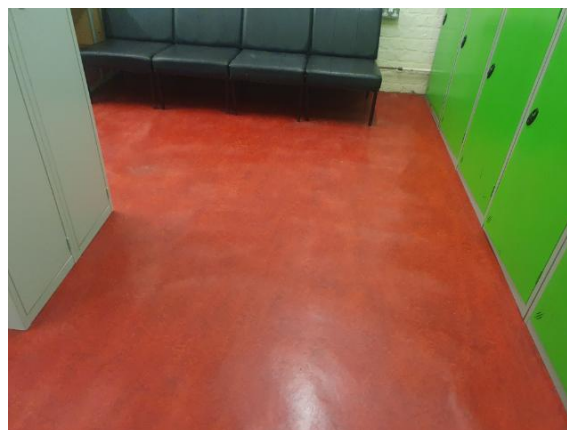
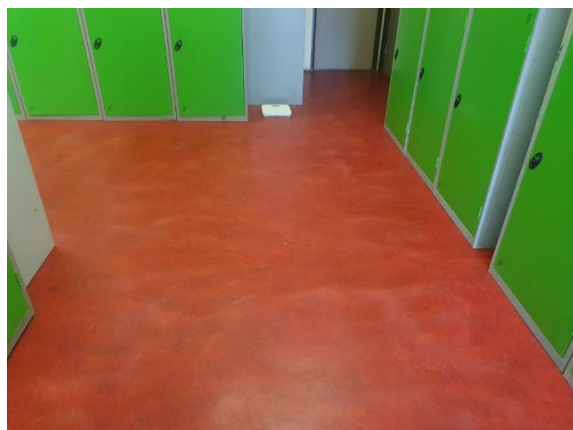


<b>Material Description:</b>	Panels to Door - Insulating Board	
<b>Identification:</b>	Previously Sampled - Asbestos Detected	
<b>Approx. quantity:</b>	4 m <sup>2</sup>	
<b>Accessibility</b>	Easy	<i>Assessment Score</i>
<b>Product type:</b>	Asbestos Insulating Board	2
<b>Extent of Damage:</b>	Moderate damage	2
<b>Surface Treatment:</b>	Unsealed AIB	2
<b>Asbestos type:</b>	Amosite	2
<b>Material Assessment Score:</b>		8
<b>Priority Assessment Score:</b>		Medium
<b>Action:</b>	Encapsulate	
<b>Comments:</b>	Previously sampled ref: Armour 21/10/19 Sample DK/4. Several areas of slight damage	

Document Name	Author	Issued by	Revision Number	Issue Date	Page No
2021	David Kelly	Armour AS	1	20/10/2021	11

**Item No:** 5 **Sample No:** N/A

**Location:** Ground Floor - Building 1 - Locker Room 005

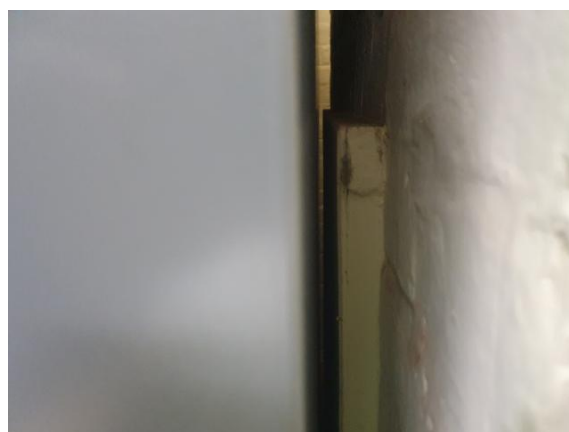
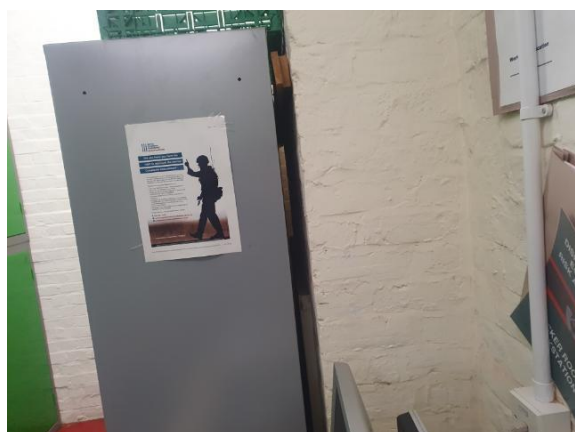


<b>Material Description:</b>	Adhesive under Lino Flooring - Bituminous Product	
<b>Identification:</b>	Previously Sampled - Asbestos Detected	
<b>Approx. quantity:</b>	40 m <sup>2</sup>	
<b>Accessibility</b>	Difficult	<i>Assessment Score</i>
<b>Product type:</b>	Asbestos Insulating Board	2
<b>Extent of Damage:</b>	Slight / minor damage	1
<b>Surface Treatment:</b>	Non-friable	0
<b>Asbestos type:</b>	Chrysotile	1
<b>Material Assessment Score:</b>		4
<b>Priority Assessment Score:</b>		Negligible
<b>Action:</b>	Manage	
<b>Comments:</b>	Previously sampled ref: Armour 21/10/19 Sample DK/6	

Document Name	Author	Issued by	Revision Number	Issue Date	Page No
2021	David Kelly	Armour AS	1	20/10/2021	12

**Item No:** 6 **Sample No:** N/A

**Location:** Ground Floor - Building 1 - Locker Room 006



<b>Material Description:</b>	Fireplace Cover - Insulating Board	
<b>Identification:</b>	Previously Sampled - Asbestos Detected	
<b>Approx. quantity:</b>	2 m <sup>2</sup>	
<b>Accessibility</b>	Easy	Assessment Score
<b>Product type:</b>	Asbestos Insulating Board	2
<b>Extent of Damage:</b>	Slight / minor damage	1
<b>Surface Treatment:</b>	Encapsulated AIB	1
<b>Asbestos type:</b>	Amosite	2
<b>Material Assessment Score:</b>		6
<b>Priority Assessment Score:</b>		Low
<b>Action:</b>	Manage	
<b>Comments:</b>	Previously sampled ref: SWA02665/3/3. Located behind a fixed locker	

Document Name	Author	Issued by	Revision Number	Issue Date	Page No
2021	David Kelly	Armour AS	1	20/10/2021	13

**Item No:** 7 **Sample No:** N/A

**Location:** Ground Floor - Building 1 - Boiler Room 007



<b>Material Description:</b>	Components with Boilers - Insulating Board	
<b>Identification:</b>	Presumed to Contain Asbestos	
<b>Approx. quantity:</b>	2 no	
<b>Accessibility</b>	Difficult	<i>Assessment Score</i>
<b>Product type:</b>	Asbestos Insulating Board	2
<b>Extent of Damage:</b>	Major damage	3
<b>Surface Treatment:</b>	Unsealed Insulation	3
<b>Asbestos type:</b>	Amosite, Chrysotile	2
<b>Material Assessment Score:</b>		10
<b>Priority Assessment Score:</b>		High
<b>Action:</b>	Manage	
<b>Comments:</b>	No access within live boilers	

Document Name	Author	Issued by	Revision Number	Issue Date	Page No
2021	David Kelly	Armour AS	1	20/10/2021	14



**Item No:** 8

**Sample No:** N/A

**Location:** Ground Floor - Building 1 - Boiler Room 008



<b>Material Description:</b>	Safe Casings - Insulating Board	
<b>Identification:</b>	Presumed to Contain Asbestos	
<b>Approx. quantity:</b>	1 no	
<b>Accessibility</b>	Difficult	<i>Assessment Score</i>
<b>Product type:</b>	Asbestos Insulating Board	2
<b>Extent of Damage:</b>	Major damage	3
<b>Surface Treatment:</b>	Unsealed Insulation	3
<b>Asbestos type:</b>	Amosite, Chrysotile	2
<b>Material Assessment Score:</b>		10
<b>Priority Assessment Score:</b>		High
<b>Action:</b>	Manage	
<b>Comments:</b>	No access within safe casings	

Document Name	Author	Issued by	Revision Number	Issue Date	Page No
2021	David Kelly	Armour AS	1	20/10/2021	15

**Item No:** 9

**Sample No:** N/A

**Location:** Ground Floor - Building 1 - Classroom 009



<b>Material Description:</b>	Fireplace Cover - Cement Product	
<b>Identification:</b>	Previously Sampled - Asbestos Detected	
<b>Approx. quantity:</b>	2 m <sup>2</sup>	
<b>Accessibility</b>	Easy	Assessment Score
<b>Product type:</b>	Cement	1
<b>Extent of Damage:</b>	Slight / minor damage	1
<b>Surface Treatment:</b>	Unsealed Cement	1
<b>Asbestos type:</b>	Chrysotile	1
<b>Material Assessment Score:</b>		4
<b>Priority Assessment Score:</b>		Negligible
<b>Action:</b>	Manage	
<b>Comments:</b>	Previously sampled ref: Armour 21/10/19 Sample DK/8. Partially covered by whiteboard	

Document Name	Author	Issued by	Revision Number	Issue Date	Page No
2021	David Kelly	Armour AS	1	20/10/2021	16



**Item No:** 10

**Sample No:** N/A

**Location:** Ground Floor - Building 1 - ACF Classroom, WC, Office and Canteen 010



<b>Material Description:</b>	Floor Tiles and Adhesive - Vinyl Products	
<b>Identification:</b>	Previously Sampled - Asbestos Detected	
<b>Approx. quantity:</b>	40 m <sup>2</sup>	
<b>Accessibility</b>	Easy	Assessment Score
<b>Product type:</b>	Cement	1
<b>Extent of Damage:</b>	Slight / minor damage	1
<b>Surface Treatment:</b>	Non-friable	0
<b>Asbestos type:</b>	Chrysotile	1
<b>Material Assessment Score:</b>		3
<b>Priority Assessment Score:</b>		Negligible
<b>Action:</b>	Manage	
<b>Comments:</b>	Previously sampled ref: Armour 21/10/19 Sample DK/9	

Document Name	Author	Issued by	Revision Number	Issue Date	Page No
2021	David Kelly	Armour AS	1	20/10/2021	17

**Item No:** 11

**Sample No:** N/A

**Location:** First Floor - Building 1 - Corridor 011



<b>Material Description:</b>	Door Header Panel - Insulating Board	
<b>Identification:</b>	Previously Sampled - Asbestos Detected	
<b>Approx. quantity:</b>	1 m <sup>2</sup>	
<b>Accessibility</b>	Difficult	Assessment Score
<b>Product type:</b>	Asbestos Insulating Board	2
<b>Extent of Damage:</b>	Slight / minor damage	1
<b>Surface Treatment:</b>	Encapsulated AIB	1
<b>Asbestos type:</b>	Amosite	2
<b>Material Assessment Score:</b>		6
<b>Priority Assessment Score:</b>		Low
<b>Action:</b>	Manage	
<b>Comments:</b>	Previously sampled ref: Armour 21/10/19 Sample DK/12. Fire exit sign is screwed into panel. Do not remove sign	

Document Name	Author	Issued by	Revision Number	Issue Date	Page No
2021	David Kelly	Armour AS	1	20/10/2021	18

**Item No:** 12

**Sample No:** N/A

**Location:** First Floor - Building 1 – Men's WC 012



<b>Material Description:</b>	Toilet Seat - PVC / Reinforced Plastics	
<b>Identification:</b>	Presumed to Contain Asbestos	
<b>Approx. quantity:</b>	1 no	
<b>Accessibility</b>	Easy	<i>Assessment Score</i>
<b>Product type:</b>	Bakelite	1
<b>Extent of Damage:</b>	Major damage	3
<b>Surface Treatment:</b>	Unsealed Insulation	3
<b>Asbestos type:</b>	Chrysotile	1
<b>Material Assessment Score:</b>		8
<b>Priority Assessment Score:</b>		Medium
<b>Action:</b>	Manage	
<b>Comments:</b>	Not possible to sample as may damage integrity of the seat	

Document Name	Author	Issued by	Revision Number	Issue Date	Page No
2021	David Kelly	Armour AS	1	20/10/2021	19

**Item No:** 13

**Sample No:** N/A

**Location:** First Floor - Building 1 - Office 013



<b>Material Description:</b>	Fireplace Cover - Insulating Board	
<b>Identification:</b>	Previously Sampled - Asbestos Detected	
<b>Approx. quantity:</b>	1 m <sup>2</sup>	
<b>Accessibility</b>	Easy	<i>Assessment Score</i>
<b>Product type:</b>	Asbestos Insulating Board	2
<b>Extent of Damage:</b>	Good	0
<b>Surface Treatment:</b>	Encapsulated AIB	1
<b>Asbestos type:</b>	Amosite	2
<b>Material Assessment Score:</b>		5
<b>Priority Assessment Score:</b>		Low
<b>Action:</b>	Manage	
<b>Comments:</b>	Previously sampled ref: Armour Sample DK/15	

Document Name	Author	Issued by	Revision Number	Issue Date	Page No
2021	David Kelly	Armour AS	1	20/10/2021	20

**Item No:** 14

**Sample No:** N/A

**Location:** First Floor - Building 1 - Ladies WC 014



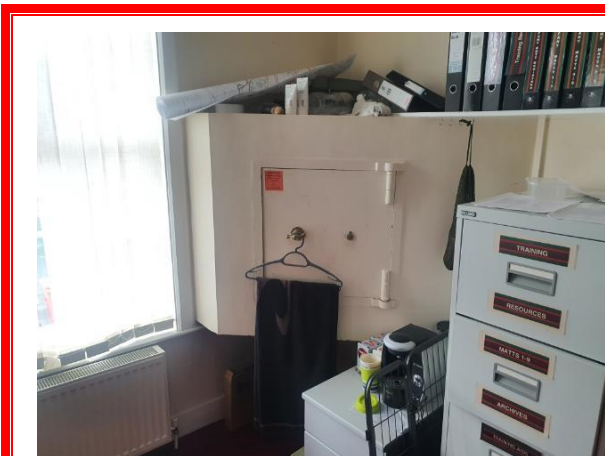
<b>Material Description:</b>	Toilet Seat - PVC / Reinforced Plastics	
<b>Identification:</b>	Presumed to Contain Asbestos	
<b>Approx. quantity:</b>	1 no	
<b>Accessibility</b>	Easy	<i>Assessment Score</i>
<b>Product type:</b>	Bakelite	1
<b>Extent of Damage:</b>	Major damage	3
<b>Surface Treatment:</b>	Unsealed Insulation	3
<b>Asbestos type:</b>	Chrysotile	1
<b>Material Assessment Score:</b>		8
<b>Priority Assessment Score:</b>		Medium
<b>Action:</b>	Manage	
<b>Comments:</b>	Not possible to sample as may damage integrity of the seat. Cistern returned a negative sample	

Document Name	Author	Issued by	Revision Number	Issue Date	Page No
2021	David Kelly	Armour AS	1	20/10/2021	21

**Item No:** 15

**Sample No:** N/A

**Location:** First Floor - Building 1 - PSI Office 015



<b>Material Description:</b>	Safe Casings - Insulating Board	
<b>Identification:</b>	Presumed to Contain Asbestos	
<b>Approx. quantity:</b>	1 no	
<b>Accessibility</b>	Difficult	Assessment Score
<b>Product type:</b>	Asbestos Insulating Board	2
<b>Extent of Damage:</b>	Major damage	3
<b>Surface Treatment:</b>	Unsealed Insulation	3
<b>Asbestos type:</b>	Amosite, Chrysotile	2
<b>Material Assessment Score:</b>		10
<b>Priority Assessment Score:</b>		High
<b>Action:</b>	Manage	
<b>Comments:</b>	No access within safe casings. Fireplace panel is timber	

Document Name	Author	Issued by	Revision Number	Issue Date	Page No
2021	David Kelly	Armour AS	1	20/10/2021	22

**Item No:** 16

**Sample No:** N/A

**Location:** First Floor - Building 1 - Company Command Office 016



<b>Material Description:</b>	Fireplace Cover - Insulating Board	
<b>Identification:</b>	Previously Sampled - Asbestos Detected	
<b>Approx. quantity:</b>	1 m <sup>2</sup>	
<b>Accessibility</b>	Easy	Assessment Score
<b>Product type:</b>	Asbestos Insulating Board	2
<b>Extent of Damage:</b>	Good	0
<b>Surface Treatment:</b>	Encapsulated AIB	1
<b>Asbestos type:</b>	Amosite	2
<b>Material Assessment Score:</b>		5
<b>Priority Assessment Score:</b>		Low
<b>Action:</b>	Manage	
<b>Comments:</b>	Previously sampled ref: Armour Sample DK/15	

Document Name	Author	Issued by	Revision Number	Issue Date	Page No
2021	David Kelly	Armour AS	1	20/10/2021	23



**Item No:** 17

**Sample No:** N/A

**Location:** First Floor - Building 1 - Recruit Office 017



<b>Material Description:</b>	Fireplace Cover - Insulating Board	
<b>Identification:</b>	Previously Sampled - Asbestos Detected	
<b>Approx. quantity:</b>	1 m <sup>2</sup>	
<b>Accessibility</b>	Easy	Assessment Score
<b>Product type:</b>	Asbestos Insulating Board	2
<b>Extent of Damage:</b>	Good	0
<b>Surface Treatment:</b>	Encapsulated AIB	1
<b>Asbestos type:</b>	Amosite	2
<b>Material Assessment Score:</b>		5
<b>Priority Assessment Score:</b>		Low
<b>Action:</b>	Manage	
<b>Comments:</b>	Previously sampled ref: Armour Sample DK/15	

Document Name	Author	Issued by	Revision Number	Issue Date	Page No
2021	David Kelly	Armour AS	1	20/10/2021	24



**Item No:** 18

**Sample No:** N/A

**Location:** External - Building 1 018



<b>Material Description:</b>	Roof Tiles - Cement Product	
<b>Identification:</b>	Previously Sampled - Asbestos Detected	
<b>Approx. quantity:</b>	600 m <sup>2</sup>	
<b>Accessibility</b>	Difficult	<i>Assessment Score</i>
<b>Product type:</b>	Cement	1
<b>Extent of Damage:</b>	Slight / minor damage	1
<b>Surface Treatment:</b>	Unsealed Cement	1
<b>Asbestos type:</b>	Chrysotile	1
<b>Material Assessment Score:</b>		4
<b>Priority Assessment Score:</b>		Negligible
<b>Action:</b>	Manage	
<b>Comments:</b>	Previously sampled ref: Armour Sample DK/19	

Document Name	Author	Issued by	Revision Number	Issue Date	Page No
2021	David Kelly	Armour AS	1	20/10/2021	25

**Item No:** 19

**Sample No:** N/A

**Location:** Ground Floor - Main Garage 019



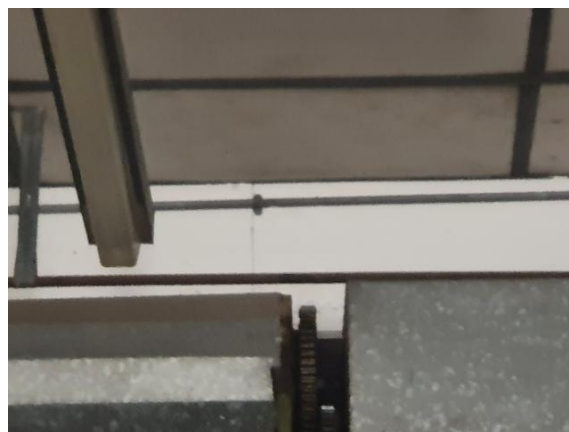
<b>Material Description:</b>	Ceiling Tiles - Insulating Board	
<b>Identification:</b>	Previously Sampled - Asbestos Detected	
<b>Approx. quantity:</b>	96 m <sup>2</sup>	
<b>Accessibility</b>	Difficult	<i>Assessment Score</i>
<b>Product type:</b>	Asbestos Insulating Board	2
<b>Extent of Damage:</b>	Moderate damage	2
<b>Surface Treatment:</b>	Unsealed AIB	2
<b>Asbestos type:</b>	Chrysotile	1
<b>Material Assessment Score:</b>		7
<b>Priority Assessment Score:</b>		Medium
<b>Action:</b>	Remove	
<b>Comments:</b>	Previously sampled ref: Armour Sample DK/20. Several areas of damage to tiles. Ceiling tile resting on top of shutter doors. Remove tile and encapsulate all other tiles	

Document Name	Author	Issued by	Revision Number	Issue Date	Page No
2021	David Kelly	Armour AS	1	20/10/2021	26

**Item No:** 20

**Sample No:** N/A

**Location:** Ground Floor - Main Garage 020



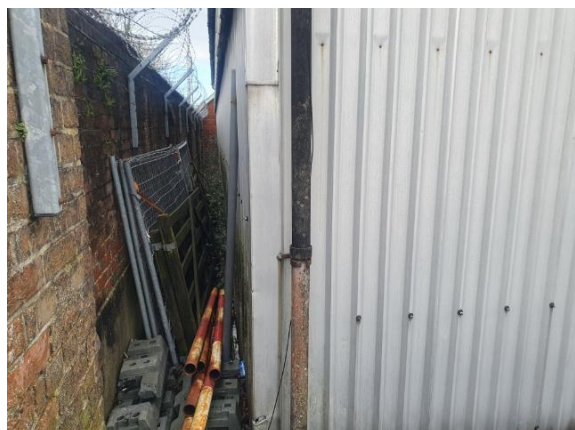
<b>Material Description:</b>	Bulk Head Panels - Insulating Board	
<b>Identification:</b>	Strongly Presumed to Contain Asbestos	
<b>Approx. quantity:</b>	10 m <sup>2</sup>	
<b>Accessibility</b>	Difficult	<i>Assessment Score</i>
<b>Product type:</b>	Asbestos Insulating Board	2
<b>Extent of Damage:</b>	Slight / minor damage	1
<b>Surface Treatment:</b>	Unsealed AIB	2
<b>Asbestos type:</b>	Amosite, Chrysotile	2
<b>Material Assessment Score:</b>		7
<b>Priority Assessment Score:</b>		Medium
<b>Action:</b>	Encapsulate	
<b>Comments:</b>	N/A	

Document Name	Author	Issued by	Revision Number	Issue Date	Page No
2021	David Kelly	Armour AS	1	20/10/2021	27

**Item No:** 21

**Sample No:** N/A

**Location:** External - MT Garage 021



<b>Material Description:</b>	Guttering and Downpipes - Cement Product	
<b>Identification:</b>	Previously Sampled - Asbestos Detected	
<b>Approx. quantity:</b>	45 LM	
<b>Accessibility</b>	Medium	<i>Assessment Score</i>
<b>Product type:</b>	Cement	1
<b>Extent of Damage:</b>	Slight / minor damage	1
<b>Surface Treatment:</b>	Unsealed Cement	1
<b>Asbestos type:</b>	Chrysotile	1
<b>Material Assessment Score:</b>		4
<b>Priority Assessment Score:</b>		Negligible
<b>Action:</b>	Manage	
<b>Comments:</b>	Previously sampled ref: Armour Sample DK/21. 4 x pipes, 2 x gutters	

Document Name	Author	Issued by	Revision Number	Issue Date	Page No
2021	David Kelly	Armour AS	1	20/10/2021	28

**Item No:** 22

**Sample No:** N/A

**Location:** External - MT Garage 022



<b>Material Description:</b>	Roof Sheets and Edging - Cement Product	
<b>Identification:</b>	Previously Sampled - Asbestos Detected	
<b>Approx. quantity:</b>	280 m <sup>2</sup>	
<b>Accessibility</b>	Difficult	<i>Assessment Score</i>
<b>Product type:</b>	Cement	1
<b>Extent of Damage:</b>	Slight / minor damage	1
<b>Surface Treatment:</b>	Unsealed Cement	1
<b>Asbestos type:</b>	Chrysotile	1
<b>Material Assessment Score:</b>		4
<b>Priority Assessment Score:</b>		Negligible
<b>Action:</b>	Manage	
<b>Comments:</b>	Previously sampled ref: Armour Sample DK/21	

Document Name	Author	Issued by	Revision Number	Issue Date	Page No
2021	David Kelly	Armour AS	1	20/10/2021	29

**Item No:** 23

**Sample No:** N/A

**Location:** Ground Floor - MT Garage 023



<b>Material Description:</b>	Roof Sheets - Cement Product	
<b>Identification:</b>	Previously Sampled - Asbestos Detected	
<b>Approx. quantity:</b>	280 m <sup>2</sup>	
<b>Accessibility</b>	Difficult	<i>Assessment Score</i>
<b>Product type:</b>	Cement	1
<b>Extent of Damage:</b>	Slight / minor damage	1
<b>Surface Treatment:</b>	Unsealed Cement	1
<b>Asbestos type:</b>	Chrysotile	1
<b>Material Assessment Score:</b>		4
<b>Priority Assessment Score:</b>		Negligible
<b>Action:</b>	Manage	
<b>Comments:</b>	Previously sampled ref: Armour Sample DK/21	

Document Name	Author	Issued by	Revision Number	Issue Date	Page No
2021	David Kelly	Armour AS	1	20/10/2021	30



**Item No:** 24

**Sample No:** N/A

**Location:** External - Range 024



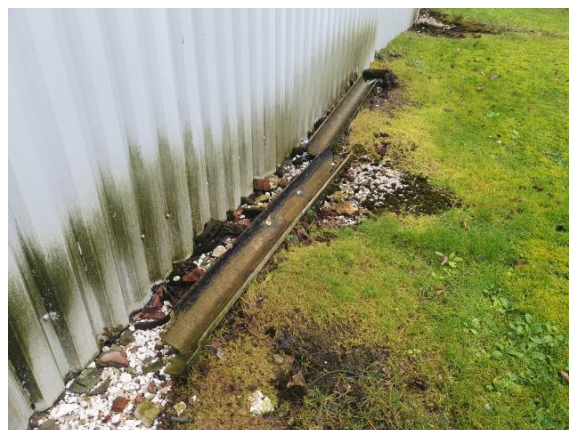
<b>Material Description:</b>	Roof Sheets and Skylight Panels - Cement Product	
<b>Identification:</b>	Previously Sampled - Asbestos Detected	
<b>Approx. quantity:</b>	140 m <sup>2</sup>	
<b>Accessibility</b>	Difficult	<i>Assessment Score</i>
<b>Product type:</b>	Cement	1
<b>Extent of Damage:</b>	Slight / minor damage	1
<b>Surface Treatment:</b>	Unsealed Cement	1
<b>Asbestos type:</b>	Chrysotile	1
<b>Material Assessment Score:</b>		4
<b>Priority Assessment Score:</b>		Negligible
<b>Action:</b>	Manage	
<b>Comments:</b>	Previously sampled ref: Armour Sample DK/22	

Document Name	Author	Issued by	Revision Number	Issue Date	Page No
2021	David Kelly	Armour AS	1	20/10/2021	31

**Item No:** 25

**Sample No:** N/A

**Location:** External - Armoured Truck Garage 025



<b>Material Description:</b>	Downpipes, Guttering and Debris - Cement Product	
<b>Identification:</b>	Previously Sampled - Asbestos Detected	
<b>Approx. quantity:</b>	16 LM	
<b>Accessibility</b>	Difficult	<i>Assessment Score</i>
<b>Product type:</b>	Cement	1
<b>Extent of Damage:</b>	Slight / minor damage	1
<b>Surface Treatment:</b>	Unsealed Cement	1
<b>Asbestos type:</b>	Chrysotile	1
<b>Material Assessment Score:</b>		4
<b>Priority Assessment Score:</b>		Negligible
<b>Action:</b>	Remove	
<b>Comments:</b>	Previously sampled ref: Armour Sample DK/23. 1 x downpipes, 1 x gutter	

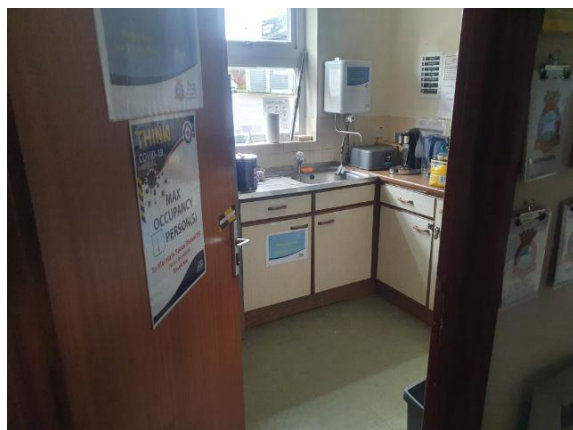
Document Name	Author	Issued by	Revision Number	Issue Date	Page No
2021	David Kelly	Armour AS	1	20/10/2021	32



**Item No:** 26

**Sample No:** N/A

**Location:** Ground Floor - Building 18 - Kitchen 026



<b>Material Description:</b>	Sink Pad - Bituminous Product	
<b>Identification:</b>	Previously Sampled - Asbestos Detected	
<b>Approx. quantity:</b>	1 no	
<b>Accessibility</b>	Medium	Assessment Score
<b>Product type:</b>	Bitumen	1
<b>Extent of Damage:</b>	Slight / minor damage	1
<b>Surface Treatment:</b>	Non-friable	0
<b>Asbestos type:</b>	Chrysotile	1
<b>Material Assessment Score:</b>		3
<b>Priority Assessment Score:</b>		Negligible
<b>Action:</b>	Manage	
<b>Comments:</b>	Previously sampled ref: Armour Sample DK/27	

Document Name	Author	Issued by	Revision Number	Issue Date	Page No
2021	David Kelly	Armour AS	1	20/10/2021	33

**Item No:** 27

**Sample No:** N/A

**Location:** Ground Floor - Female Accommodation - WC 027



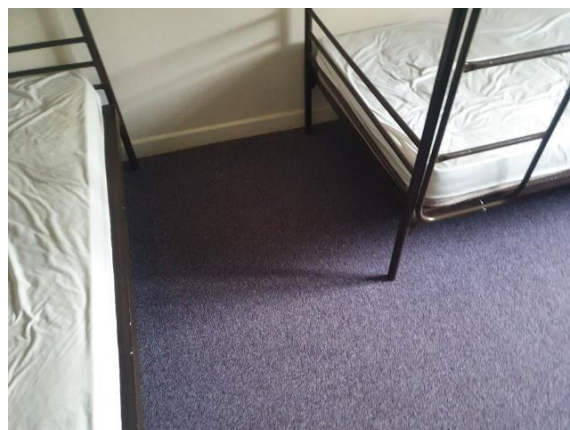
<b>Material Description:</b>	Toilet Seat - PVC / Reinforced Plastics	
<b>Identification:</b>	Presumed to Contain Asbestos	
<b>Approx. quantity:</b>	2 no	
<b>Accessibility</b>	Easy	<i>Assessment Score</i>
<b>Product type:</b>	Bakelite	1
<b>Extent of Damage:</b>	Major damage	3
<b>Surface Treatment:</b>	Unsealed Insulation	3
<b>Asbestos type:</b>	Chrysotile	1
<b>Material Assessment Score:</b>		8
<b>Priority Assessment Score:</b>		Medium
<b>Action:</b>	Manage	
<b>Comments:</b>	Not possible to sample as may damage integrity of the seat	

Document Name	Author	Issued by	Revision Number	Issue Date	Page No
2021	David Kelly	Armour AS	1	20/10/2021	34

**Item No:** 28

**Sample No:** N/A

**Location:** Ground Floor - Building 16 - Bedroom 2 028



<b>Material Description:</b>	Adhesive under Carpet - Bituminous Product	
<b>Identification:</b>	Previously Sampled - Asbestos Detected	
<b>Approx. quantity:</b>	10 m <sup>2</sup>	
<b>Accessibility</b>	Difficult	Assessment Score
<b>Product type:</b>	Bitumen	1
<b>Extent of Damage:</b>	Slight / minor damage	1
<b>Surface Treatment:</b>	Non-friable	0
<b>Asbestos type:</b>	Chrysotile	1
<b>Material Assessment Score:</b>		3
<b>Priority Assessment Score:</b>		Negligible
<b>Action:</b>	Manage	
<b>Comments:</b>	Previously sampled ref: Armour Sample DK/33. Under carpet	

Document Name	Author	Issued by	Revision Number	Issue Date	Page No
2021	David Kelly	Armour AS	1	20/10/2021	35

**Item No:** 29

**Sample No:** N/A

**Location:** External - Building 16 029



<b>Material Description:</b>	Roof Tiles - Cement Product	
<b>Identification:</b>	Strongly Presumed to Contain Asbestos	
<b>Approx. quantity:</b>	112 m <sup>2</sup>	
<b>Accessibility</b>	Difficult	<i>Assessment Score</i>
<b>Product type:</b>	Bitumen	1
<b>Extent of Damage:</b>	Slight / minor damage	1
<b>Surface Treatment:</b>	Unsealed Cement	1
<b>Asbestos type:</b>	Chrysotile	1
<b>Material Assessment Score:</b>		4
<b>Priority Assessment Score:</b>		Negligible
<b>Action:</b>	Manage	
<b>Comments:</b>	N/A	

Document Name	Author	Issued by	Revision Number	Issue Date	Page No
2021	David Kelly	Armour AS	1	20/10/2021	36

**Item No:** 30

**Sample No:** N/A

**Location:** Ground Floor - Building 15 - Conference Room and Cupboard 030



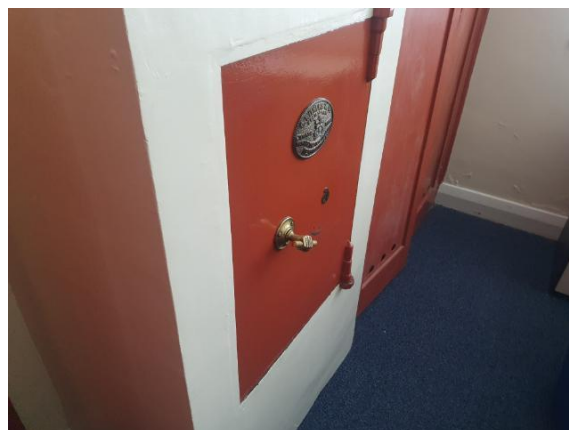
<b>Material Description:</b>	Night Storage Heaters - No Access Gained	
<b>Identification:</b>	Presumed to Contain Asbestos	
<b>Approx. quantity:</b>	1 no	
<b>Accessibility</b>	Difficult	Assessment Score
<b>Product type:</b>	Asbestos Insulating Board	2
<b>Extent of Damage:</b>	Major damage	3
<b>Surface Treatment:</b>	Unsealed Insulation	3
<b>Asbestos type:</b>	Amosite, Chrysotile	2
<b>Material Assessment Score:</b>		10
<b>Priority Assessment Score:</b>		High
<b>Action:</b>	Manage	
<b>Comments:</b>	No access as live	

Document Name	Author	Issued by	Revision Number	Issue Date	Page No
2021	David Kelly	Armour AS	1	20/10/2021	37

**Item No:** 31

**Sample No:** N/A

**Location:** Ground Floor - Building 15 - Office 1 031



<b>Material Description:</b>	Safe Casings - Insulating Board	
<b>Identification:</b>	Presumed to Contain Asbestos	
<b>Approx. quantity:</b>	1 no	
<b>Accessibility</b>	Difficult	<i>Assessment Score</i>
<b>Product type:</b>	Asbestos Insulating Board	2
<b>Extent of Damage:</b>	Major damage	3
<b>Surface Treatment:</b>	Unsealed Insulation	3
<b>Asbestos type:</b>	Amosite, Chrysotile	2
<b>Material Assessment Score:</b>		10
<b>Priority Assessment Score:</b>		High
<b>Action:</b>	Manage	
<b>Comments:</b>	No access within safe casings	

Document Name	Author	Issued by	Revision Number	Issue Date	Page No
2021	David Kelly	Armour AS	1	20/10/2021	38



**Item No:** 32

**Sample No:** N/A

**Location:** Ground Floor - Receipts Building, Corridor, Office and Store 032



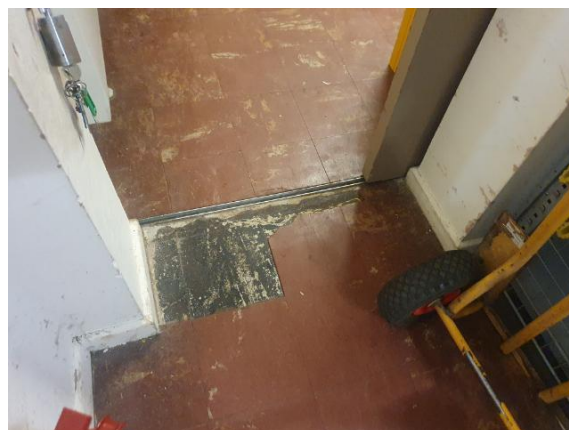
<b>Material Description:</b>	Floor Tiles and Adhesive - Vinyl Products	
<b>Identification:</b>	Previously Sampled - Asbestos Detected	
<b>Approx. quantity:</b>	40 m <sup>2</sup>	
<b>Accessibility</b>	Easy	Assessment Score
<b>Product type:</b>	Vinyl	1
<b>Extent of Damage:</b>	Slight / minor damage	1
<b>Surface Treatment:</b>	Non-friable	0
<b>Asbestos type:</b>	Chrysotile	1
<b>Material Assessment Score:</b>		3
<b>Priority Assessment Score:</b>		Negligible
<b>Action:</b>	Manage	
<b>Comments:</b>	Previously sampled ref: Armour Sample DK/35	

Document Name	Author	Issued by	Revision Number	Issue Date	Page No
2021	David Kelly	Armour AS	1	20/10/2021	39

**Item No:** 33

**Sample No:** N/A

**Location:** Ground Floor - Receipts Building - Stores x 3 033



<b>Material Description:</b>	Floor Tiles and Adhesive - Vinyl Products	
<b>Identification:</b>	Previously Sampled - Asbestos Detected	
<b>Approx. quantity:</b>	60 m <sup>2</sup>	
<b>Accessibility</b>	Easy	<i>Assessment Score</i>
<b>Product type:</b>	Vinyl	1
<b>Extent of Damage:</b>	Moderate damage	2
<b>Surface Treatment:</b>	Non-friable	0
<b>Asbestos type:</b>	Chrysotile	1
<b>Material Assessment Score:</b>		4
<b>Priority Assessment Score:</b>		Negligible
<b>Action:</b>	Manage	
<b>Comments:</b>	Previously sampled ref: Armour Sample DK/35	

Document Name	Author	Issued by	Revision Number	Issue Date	Page No
2021	David Kelly	Armour AS	1	20/10/2021	40



**Item No:** 34

**Sample No:** N/A

**Location:** External - Receipts Building 034



<b>Material Description:</b>	Downpipe - Cement Product	
<b>Identification:</b>	Previously Sampled - Asbestos Detected	
<b>Approx. quantity:</b>	3 LM	
<b>Accessibility</b>	Medium	Assessment Score
<b>Product type:</b>	Cement	1
<b>Extent of Damage:</b>	Slight / minor damage	1
<b>Surface Treatment:</b>	Unsealed Cement	1
<b>Asbestos type:</b>	Chrysotile	1
<b>Material Assessment Score:</b>		4
<b>Priority Assessment Score:</b>		Negligible
<b>Action:</b>	Manage	
<b>Comments:</b>	Previously sampled ref: Armour Sample DK/37	

Document Name	Author	Issued by	Revision Number	Issue Date	Page No
2021	David Kelly	Armour AS	1	20/10/2021	41

**Item No:** 35

**Sample No:** N/A

**Location:** External - Receipts Building 035



<b>Material Description:</b>	Undercloaking - Cement Product	
<b>Identification:</b>	Presumed to Contain Asbestos	
<b>Approx. quantity:</b>	20 LM	
<b>Accessibility</b>	Difficult	<i>Assessment Score</i>
<b>Product type:</b>	Cement	1
<b>Extent of Damage:</b>	Slight / minor damage	1
<b>Surface Treatment:</b>	Unsealed Cement	1
<b>Asbestos type:</b>	Chrysotile	1
<b>Material Assessment Score:</b>		4
<b>Priority Assessment Score:</b>		Negligible
<b>Action:</b>	Manage	
<b>Comments:</b>	N/A	

Document Name	Author	Issued by	Revision Number	Issue Date	Page No
2021	David Kelly	Armour AS	1	20/10/2021	42

<b>Item No:</b>	<b>36</b>	<b>Sample No:</b>	<b>N/A</b>
<b>Location:</b>	Ground Floor - Male Accommodation - Bedroom 1 and 2 036		



<b>Material Description:</b>	Fiberboard Ceiling - Paper Product	
<b>Identification:</b>	Previously Sampled - Asbestos Detected	
<b>Approx. quantity:</b>	10 m <sup>2</sup>	
<b>Accessibility</b>	Medium	Assessment Score
<b>Product type:</b>	Paper	2
<b>Extent of Damage:</b>	Moderate damage	2
<b>Surface Treatment:</b>	Paper	1
<b>Asbestos type:</b>	Chrysotile	1
<b>Material Assessment Score:</b>		6
<b>Priority Assessment Score:</b>		Low
<b>Action:</b>	Encapsulate	
<b>Comments:</b>	Previously sampled ref: Armour 21/10/19 Sample DK/39	

Document Name	Author	Issued by	Revision Number	Issue Date	Page No
2021	David Kelly	Armour AS	1	20/10/2021	43

**Item No:** 37

**Sample No:** N/A

**Location:** Ground Floor - Male Accommodation - Bedroom 1 and 2  
037



<b>Material Description:</b>	Floor Tiles and Adhesive - Vinyl Products	
<b>Identification:</b>	Previously Sampled - Asbestos Detected	
<b>Approx. quantity:</b>	100 m <sup>2</sup>	
<b>Accessibility</b>	Difficult	Assessment Score
<b>Product type:</b>	Vinyl	1
<b>Extent of Damage:</b>	Slight / minor damage	1
<b>Surface Treatment:</b>	Non-friable	0
<b>Asbestos type:</b>	Chrysotile	1
<b>Material Assessment Score:</b>		3
<b>Priority Assessment Score:</b>		Negligible
<b>Action:</b>	Manage	
<b>Comments:</b>	Previously sampled ref: Armour 21/10/19 Sample DK/40. Under carpet	

Document Name	Author	Issued by	Revision Number	Issue Date	Page No
2021	David Kelly	Armour AS	1	20/10/2021	44

**Item No:** 38

**Sample No:** N/A

**Location:** Ground Floor - Male Accommodation - Bedroom 2, 3 and Lobby 038



<b>Material Description:</b>	Wall Panels - Insulating Board	
<b>Identification:</b>	Previously Sampled - Asbestos Detected	
<b>Approx. quantity:</b>	16 LM	
<b>Accessibility</b>	Difficult	Assessment Score
<b>Product type:</b>	Asbestos Insulating Board	2
<b>Extent of Damage:</b>	Moderate damage	2
<b>Surface Treatment:</b>	Encapsulated AIB	1
<b>Asbestos type:</b>	Amosite	2
<b>Material Assessment Score:</b>		7
<b>Priority Assessment Score:</b>		Medium
<b>Action:</b>	Manage	
<b>Comments:</b>	Previously sampled ref: Armour 21/10/19 Sample DK/41. Panels have been encapsulated since the original survey	

Document Name	Author	Issued by	Revision Number	Issue Date	Page No
2021	David Kelly	Armour AS	1	20/10/2021	45



**Item No:** 39

**Sample No:** N/A

**Location:** Ground Floor - Male Accommodation - WC/Shower 039



<b>Material Description:</b>	Fiberboard Ceiling - Paper Product	
<b>Identification:</b>	Previously Sampled - Asbestos Detected	
<b>Approx. quantity:</b>	6 m <sup>2</sup>	
<b>Accessibility</b>	Difficult	Assessment Score
<b>Product type:</b>	Paper	2
<b>Extent of Damage:</b>	Moderate damage	2
<b>Surface Treatment:</b>	Paper	1
<b>Asbestos type:</b>	Chrysotile	1
<b>Material Assessment Score:</b>		6
<b>Priority Assessment Score:</b>		Low
<b>Action:</b>	Encapsulate	
<b>Comments:</b>	Previously sampled ref: Armour 21/10/19 Sample DK/39	

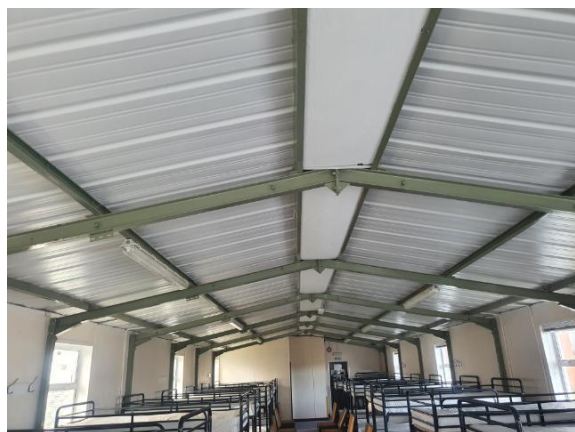
Document Name	Author	Issued by	Revision Number	Issue Date	Page No
2021	David Kelly	Armour AS	1	20/10/2021	46



**Item No:** 40

**Sample No:** N/A

**Location:** Ground Floor - Male Accommodation - Bedroom 3 040



<b>Material Description:</b>	Fiberboard Ceiling - Paper Product	
<b>Identification:</b>	Previously Sampled - Asbestos Detected	
<b>Approx. quantity:</b>	10 m <sup>2</sup>	
<b>Accessibility</b>	Medium	Assessment Score
<b>Product type:</b>	Paper	2
<b>Extent of Damage:</b>	Slight / minor damage	1
<b>Surface Treatment:</b>	Paper	1
<b>Asbestos type:</b>	Chrysotile	1
<b>Material Assessment Score:</b>		5
<b>Priority Assessment Score:</b>		Low
<b>Action:</b>	Encapsulate	
<b>Comments:</b>	Previously sampled ref: Armour 21/10/19 Sample DK/39	

Document Name	Author	Issued by	Revision Number	Issue Date	Page No
2021	David Kelly	Armour AS	1	20/10/2021	47

**Item No:** 41

**Sample No:** N/A

**Location:** Ground Floor - Male Accommodation - Bedroom 3 041

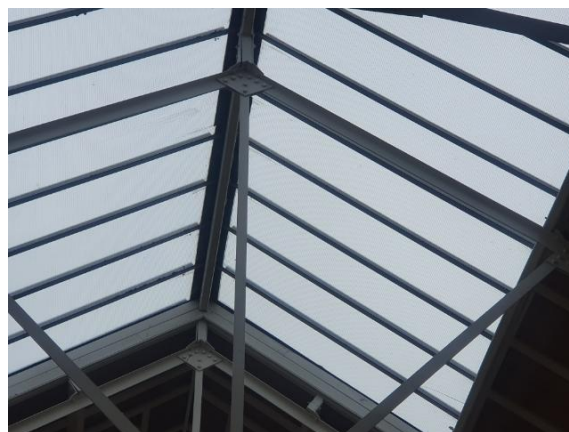
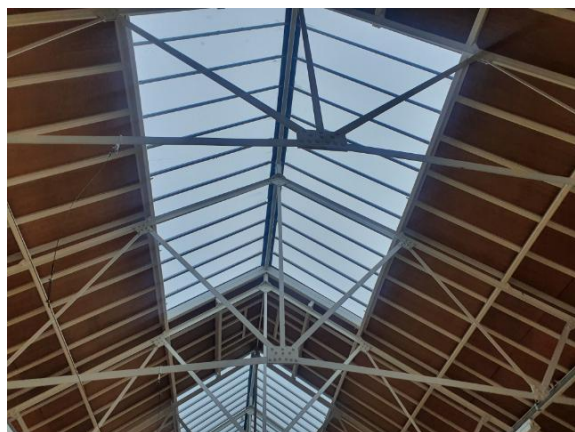

<b>Material Description:</b>	Floor Tiles and Adhesive - Vinyl Products	
<b>Identification:</b>	Previously Sampled - Asbestos Detected	
<b>Approx. quantity:</b>	100 m <sup>2</sup>	
<b>Accessibility</b>	Difficult	<i>Assessment Score</i>
<b>Product type:</b>	Vinyl	1
<b>Extent of Damage:</b>	Slight / minor damage	1
<b>Surface Treatment:</b>	Non-friable	0
<b>Asbestos type:</b>	Chrysotile	1
<b>Material Assessment Score:</b>		3
<b>Priority Assessment Score:</b>		Negligible
<b>Action:</b>	Manage	
<b>Comments:</b>	Previously sampled ref: Armour 21/10/19 Sample DK/40. Under carpet	

Document Name	Author	Issued by	Revision Number	Issue Date	Page No
2021	David Kelly	Armour AS	1	20/10/2021	48

**Item No:** 42

**Sample No:** N/A

**Location:** Ground Floor - Building 1 - Drill Hall 042



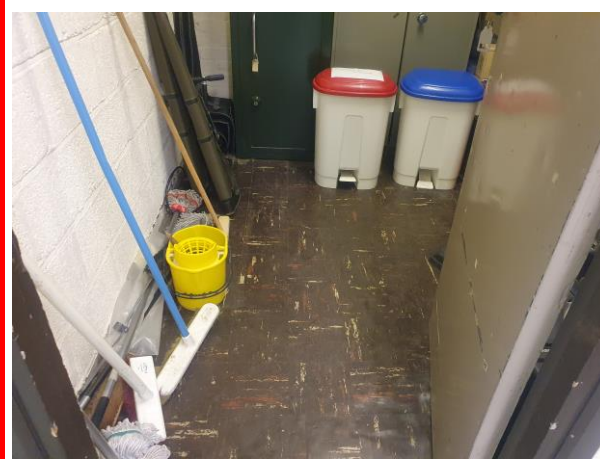
<b>Material Description:</b>	Rope Seals to Skylights - Gaskets (rope/woven)	
<b>Identification:</b>	Presumed to Contain Asbestos	
<b>Approx. quantity:</b>	80 m <sup>2</sup>	
<b>Accessibility</b>	Difficult	<i>Assessment Score</i>
<b>Product type:</b>	Rope	2
<b>Extent of Damage:</b>	Slight / minor damage	1
<b>Surface Treatment:</b>	Non-friable	0
<b>Asbestos type:</b>	Chrysotile	1
<b>Material Assessment Score:</b>		4
<b>Priority Assessment Score:</b>		Negligible
<b>Action:</b>	Manage	
<b>Comments:</b>	No access to sample due to height restrictions	

Document Name	Author	Issued by	Revision Number	Issue Date	Page No
2021	David Kelly	Armour AS	1	20/10/2021	49

**Item No:** 44

**Sample No:** N/A

**Location:** Ground Floor - Building 1 - ACF Rooms x 3 044



<b>Material Description:</b>	Floor Tiles and Adhesive - Vinyl Products	
<b>Identification:</b>	Previously Sampled - Asbestos Detected	
<b>Approx. quantity:</b>	9m2	
<b>Accessibility</b>	Easy	Assessment Score
<b>Product type:</b>	Vinyl	1
<b>Extent of Damage:</b>	Slight/minor damage	0
<b>Surface Treatment:</b>	Non-Friable	1
<b>Asbestos type:</b>	Chrysotile	1
<b>Material Assessment Score:</b>		3
<b>Priority Assessment Score:</b>		Negligible
<b>Action:</b>	Manage	
<b>Comments:</b>	<p>Previously a no access area, now accessed.</p> <p>Previously Sampled: Ref Armour 21/10/2019 Sample DK/9</p>	

Document Name	Author	Issued by	Revision Number	Issue Date	Page No
2021	David Kelly	Armour AS	1	20/10/2021	50

**Item No:** 48

**Sample No:** N/A

**Location:** External - Service Garage 048



<b>Material Description:</b>	Roof Tiles - Cement Product	
<b>Identification:</b>	Strongly Presumed to Contain Asbestos	
<b>Approx. quantity:</b>	100 m <sup>2</sup>	
<b>Accessibility</b>	Difficult	<i>Assessment Score</i>
<b>Product type:</b>	Cement	1
<b>Extent of Damage:</b>	Slight / minor damage	1
<b>Surface Treatment:</b>	Unsealed Cement	1
<b>Asbestos type:</b>	Chrysotile	1
<b>Material Assessment Score:</b>		4
<b>Priority Assessment Score:</b>		Negligible
<b>Action:</b>	Manage	
<b>Comments:</b>	N/A	

Document Name	Author	Issued by	Revision Number	Issue Date	Page No
2021	David Kelly	Armour AS	1	20/10/2021	51



## Section 5: Negative Items

<b>Item No:</b>	<b>43</b>	<b>Sample No:</b>	<b>N/A</b>
<b>Location:</b>	Ground Floor - Building 1 - Armoury and Ammo Bunker 043		



<b>Material Description:</b>	No Suspect Materials Found	
<b>Identification:</b>	N/A	
<b>Approx. quantity:</b>	N/A	
<b>Accessibility</b>	N/A	<i>Assessment Score</i>
<b>Product type:</b>	N/A	N/A
<b>Extent of Damage:</b>	N/A	N/A
<b>Surface Treatment:</b>	N/A	N/A
<b>Asbestos type:</b>	N/A	N/A
<b>Material Assessment Score:</b>		N/A
<b>Priority Assessment Score:</b>		N/A
<b>Action:</b>	N/A	
<b>Comments:</b>	Previously a no access area now accessed. No asbestos suspected.	

Document Name	Author	Issued by	Revision Number	Issue Date	Page No
2021	David Kelly	Armour AS	1	20/10/2021	52



<b>Item No:</b>	<b>45</b>	<b>Sample No:</b>	<b>N/A</b>
<b>Location:</b>	Ground Floor - Building 1 - Main Kitchen 045		



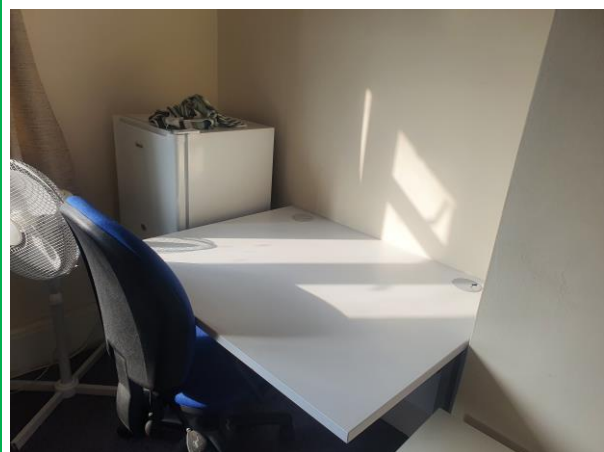
<b>Material Description:</b>	No Suspect Materials Found	
<b>Identification:</b>	N/A	
<b>Approx. quantity:</b>	N/A	
<b>Accessibility</b>	N/A	<i>Assessment Score</i>
<b>Product type:</b>	N/A	N/A
<b>Extent of Damage:</b>	N/A	N/A
<b>Surface Treatment:</b>	N/A	N/A
<b>Asbestos type:</b>	N/A	N/A
<b>Material Assessment Score:</b>		N/A
<b>Priority Assessment Score:</b>		N/A
<b>Action:</b>	N/A	
<b>Comments:</b>	N/A	

Document Name	Author	Issued by	Revision Number	Issue Date	Page No
2021	David Kelly	Armour AS	1	20/10/2021	53

**Item No:** 46

**Sample No:** N/A

**Location:** First Floor - Adult Accommodation - Room 3 046



<b>Material Description:</b>	No Suspect Materials Found	
<b>Identification:</b>	N/A	
<b>Approx. quantity:</b>	N/A	
<b>Accessibility</b>	N/A	<i>Assessment Score</i>
<b>Product type:</b>	N/A	N/A
<b>Extent of Damage:</b>	N/A	N/A
<b>Surface Treatment:</b>	N/A	N/A
<b>Asbestos type:</b>	N/A	N/A
<b>Material Assessment Score:</b>		N/A
<b>Priority Assessment Score:</b>		N/A
<b>Action:</b>	N/A	
<b>Comments:</b>	Previously a no access area now accessed. No asbestos suspected.	

Document Name	Author	Issued by	Revision Number	Issue Date	Page No
2021	David Kelly	Armour AS	1	20/10/2021	54

**Item No:** 47

**Sample No:** DK/01

**Location:** First Floor - Building 1 - Canteen 047



<b>Material Description:</b>	Sink Pad - Bituminous Product	
<b>Identification:</b>	Sampled - No Asbestos Found	
<b>Approx. quantity:</b>	N/A	
<b>Accessibility</b>	N/A	<i>Assessment Score</i>
<b>Product type:</b>	N/A	N/A
<b>Extent of Damage:</b>	N/A	N/A
<b>Surface Treatment:</b>	N/A	N/A
<b>Asbestos type:</b>	N/A	N/A
<b>Material Assessment Score:</b>		N/A
<b>Priority Assessment Score:</b>		N/A
<b>Action:</b>	N/A	
<b>Comments:</b>	N/A	

Document Name	Author	Issued by	Revision Number	Issue Date	Page No
2021	David Kelly	Armour AS	1	20/10/2021	55

<b>Item No:</b>	<b>49</b>	<b>Sample No:</b>	<b>N/A</b>
<b>Location:</b>	ACF Stores x 2		



<b>Material Description:</b>	No Asbestos Suspected	
<b>Identification:</b>	N/A	
<b>Approx. quantity:</b>	N/A	
<b>Accessibility</b>	N/A	<i>Assessment Score</i>
<b>Product type:</b>	N/A	N/A
<b>Extent of Damage:</b>	N/A	N/A
<b>Surface Treatment:</b>	N/A	N/A
<b>Asbestos type:</b>	N/A	N/A
<b>Material Assessment Score:</b>		N/A
<b>Priority Assessment Score:</b>		N/A
<b>Action:</b>	N/A	
<b>Comments:</b>	Previously a no access area now accessed. No asbestos suspected.	

Document Name	Author	Issued by	Revision Number	Issue Date	Page No
2021	David Kelly	Armour AS	1	20/10/2021	56



## **Section 6: Survey Objectives**

Instructions were received from Kelvin Walker of Wessex RFCA to carry out a Re-Inspection asbestos survey at 6th Battalion The Rifles C, Poundbury Road, Dorset, DT1 1TA in accordance with HSG264 and Armour Analytical's quality procedures.

The survey was carried out on 17 February 2021 to 18 February 2021 by David Kelly with the objective of facilitating a Re-Inspection report.

A survey, with the objective of accessing previously no access areas, was carried out on 19<sup>th</sup> October 2021 by David Kelly.

Document Name	Author	Issued by	Revision Number	Issue Date	Page No
2021	David Kelly	Armour AS	1	20/10/2021	57



## **Section 7: Survey Notes**

This report has been written with reference to the various Guidance Notes etc, issued, and current at the date of this report and describes circumstances at the site on the date the investigation took place.

Where similar items exist in the building, only one or two samples may have been taken to ascertain the material content. It was assumed that similar products were of the same material.

Any person undertaking work within the buildings should be told of the presence of asbestos. This briefing also applies to any other person associated with the site, including staff, sub-contractors and others.

The drawings in the report are not to scale and are illustrative only to indicate approximate locations. The descriptions used are for location identification purposes.

All the recommendations described in this report are based upon assumptions made after consideration of the type of material, condition of the material, its location, analysis result and type of use the area is thought to be subjected to. However, statutory authorities or others could require amendments based on local knowledge, change in legislation, change in use or indeed other conditions or criteria.

Samples taken from floor tiles (or similar material) may include a bitumen adhesive as part of the sample. It is known that some proprietary brands of bitumen have an asbestos content and this will be included as an integral part of the bulk sample unless otherwise stated.

**Due to the artex being non-homogenous, it is recommended to treat all areas as containing asbestos if you have a positive sample of artex.**

Document Name	Author	Issued by	Revision Number	Issue Date	Page No
2021	David Kelly	Armour AS	1	20/10/2021	58



## Section 8: Material Assessment Algorithm

Variable	Score	Examples
Product type	1	Vinyl, 'Bakelite', Cement, Textured Coating, Non-Friable Debris, Floor Tiles, Bitumen, Reinforced Plastics, Mastic (putty), Windowsills
	2	Asbestos Insulating Board, Paper, Rope, Burned Cement Debris, Flashguards, Gaskets
	3	Pipe Insulation, Spray Coating, Friable Debris, Loose Fill Asbestos
Condition / Damage	0	Good
	1	Slight / Minor Damage
	2	Moderate Damage – Breakage to Surface Treatment
	3	Major Damage – Smashed or Exposed Material
Surface Treatment	0	Non-Friable E.G. Vinyl
	1	Enclosed Insulation, Encapsulated AIB, Unsealed Cement, Woven Material, Paper
	2	Unsealed AIB, Encapsulated Insulation, Encapsulated Pipe Lagging
	3	Unsealed Insulation, Spray Coating, Unsealed Pipe Lagging
Asbestos Type	1	Chrysotile
	2	Amosite & Other Amphiboles
	3	Crocidolite

The scores from each of the four sections are added together to produce a risk score:

Risk score	Risk assessment
<b>10 or more</b>	High risk
<b>7 – 9</b>	Medium risk
<b>5 – 6</b>	Low risk
<b>4 &amp; below</b>	Negligible risk

## Section 9: Certificates of Bulk Analysis



Our Ref: J203658 FI: 1  
Your Ref: 3700  
Date: 25/02/2021

**ENVIROCHEM**  
Analytical Laboratories Ltd.  
12 The Gardens  
Broadcut, Fareham  
Hampshire  
PO16 8SS



Tel: (01329) 287777  
Fax: (01329) 287755  
www.envirochem.co.uk  
office@envirochem.co.uk

### Asbestos Fibre Identification Report

**Client:** Armour Analytical Services Ltd  
Admirals Yard, Station Road, Patchway, Bristol, BS34 6LR  
**Site Address:** 6th Battalion, Poundbury Road, Dorchester, DT 1TA  
**Sampled By:** Armour Analytical Services Ltd  
**Date sampled/received:** 23rd February 2021  
**Date analysed:** 25th February 2021  
**Analyst/s:** Matt Hurst  
**Analysis Location:** 12 The Gardens, Broadcut, Fareham, Hampshire, PO16 8SS

#### ANALYTICAL PROCEDURE


Fibre identification was carried out in accordance with the documented 'in-house' method (2.01) based on the HSE Guidance Note HSG 248. These employed stereo microscopy, polarized microscopy and dispersion staining techniques.

#### RESULTS

Sample No.	Sample Ref.	Location	Asbestos Detected	Asbestos Type
DK/01	BS658182	Building 1. Canteen Sink pad	No	

#### NOTES:

1. Sample(s) were examined for the presence of 6 types of asbestos fibres: crocidolite (blue), amosite (brown), chrysotile (white), anthophyllite, actinolite and tremolite.
2. The results shown in this test report specifically refer to the sample(s) tested as received unless otherwise stated and samples collected by the client are evaluated using information provided by the client. For samples collected by the client the date of receipt is deemed to be the same as the date sampled.
3. Envirochem is a UKAS accredited laboratory for sampling and identification of asbestos containing materials.
4. Comments, observations and opinions are outside the scope of UKAS accreditation.
5. The analytical method in the HSG248 does not quantify the amount of asbestos present, therefore UKAS accreditation does not permit quantification.
6. If, during fibre identification, only 1 or 2 fibres are seen and identified as asbestos, then the term 'trace asbestos identified' is used.
7. This report shall not be reproduced except in full, without written approval of Envirochem.

SIGNATURE: 

Authorised signatory

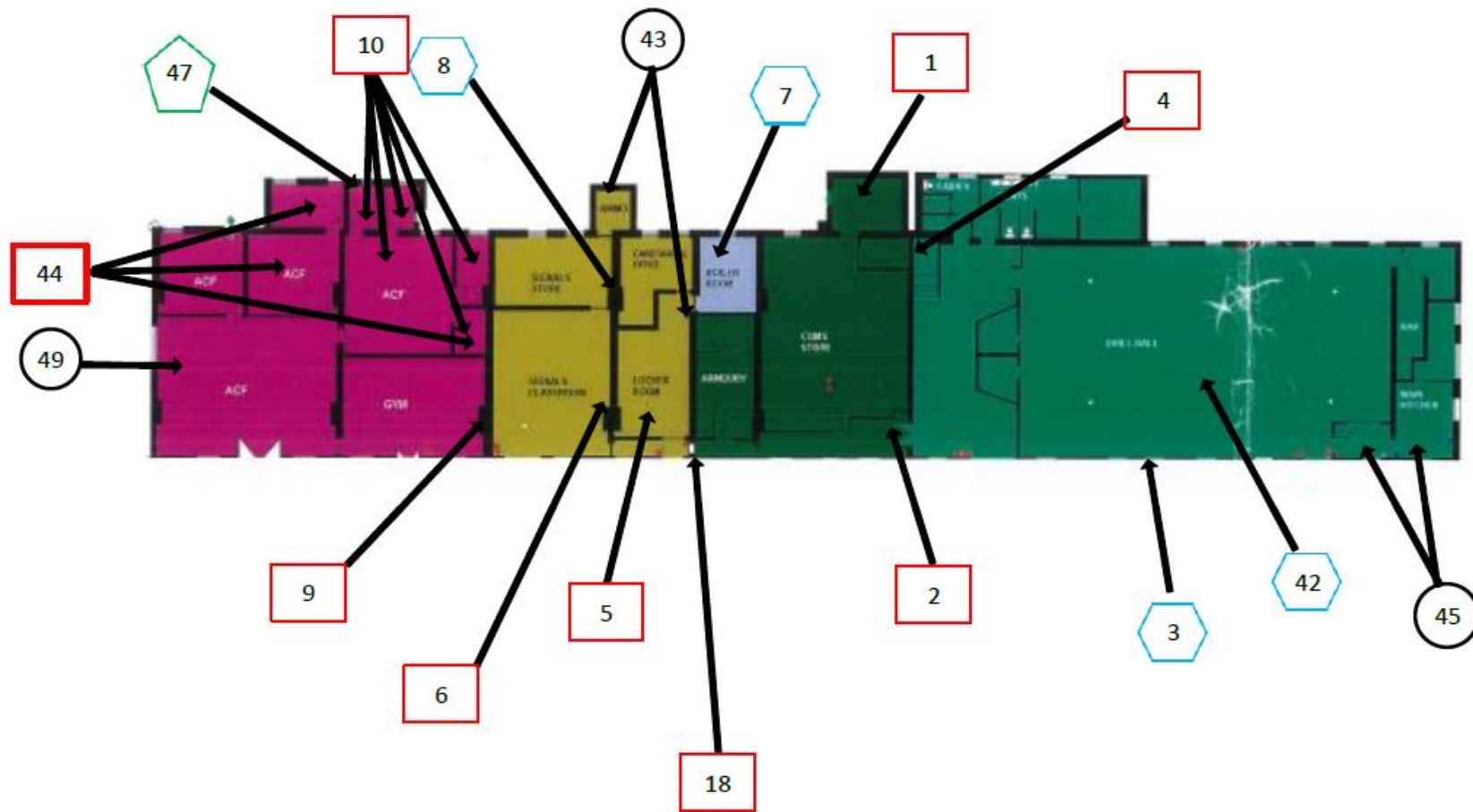
PRINT NAME: Matt Hurst







Reg. No. 2378228 England. Registered Office: Envirochem, 12 The Gardens, Broadcut, Fareham, Hampshire, PO16 8SS.

Page 1 of 1

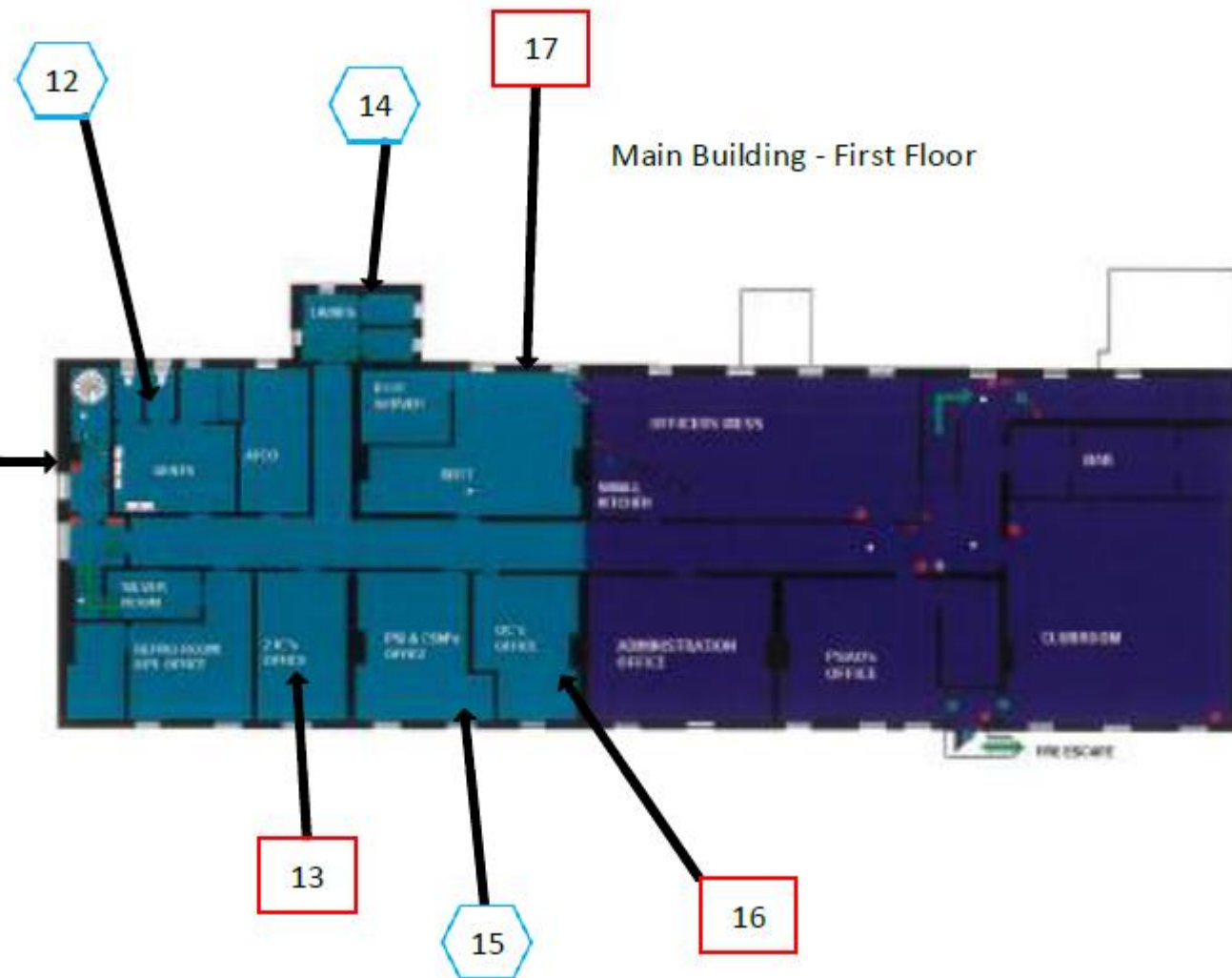
Document Name	Author	Issued by	Revision Number	Issue Date	Page No
2021	David Kelly	Armour AS	1	20/10/2021	60







## Section 10: Site Plan



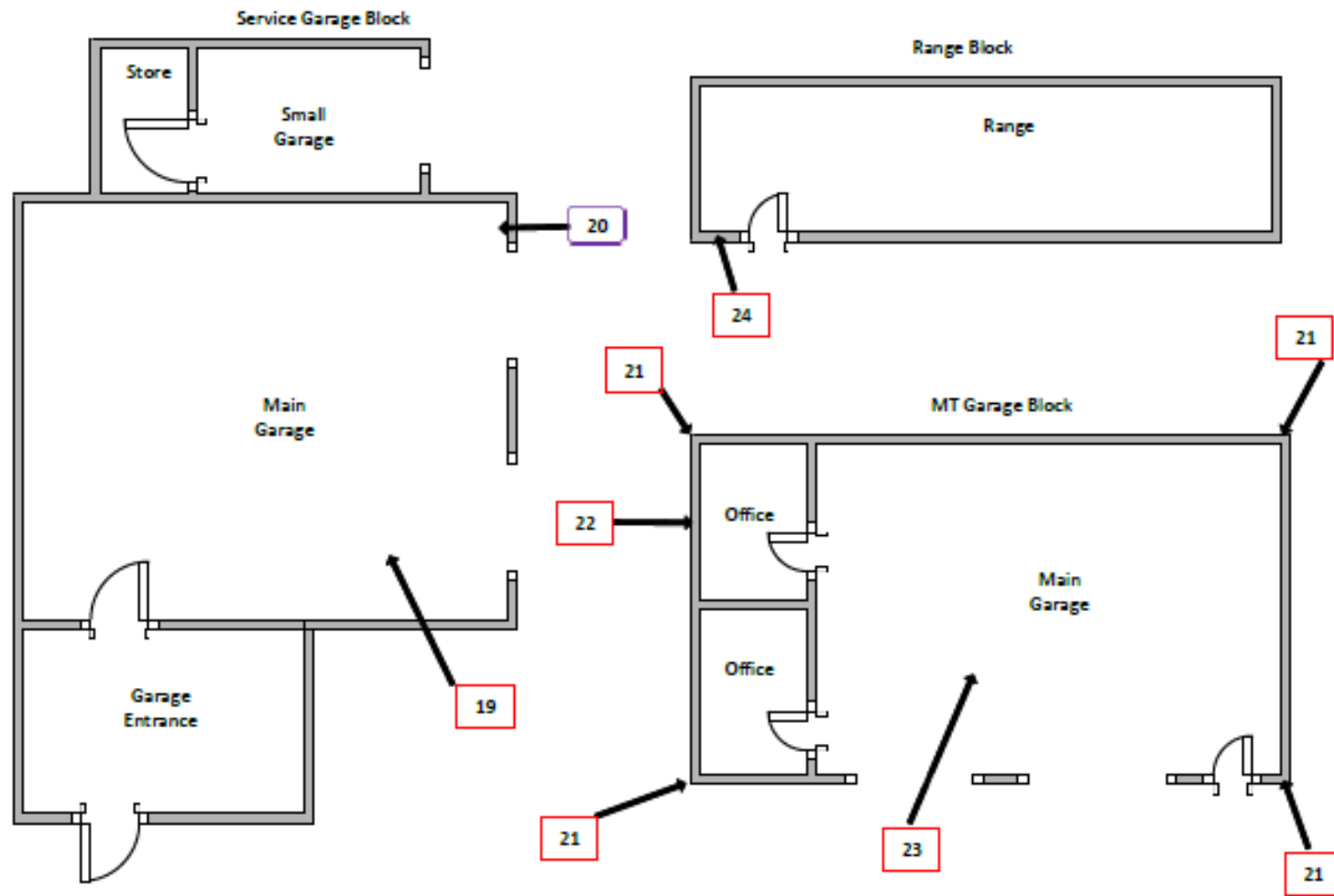
Key	
	Visual Inspection
	Asbestos Detected (Positive Item)
	No Asbestos Detected (Negative Item)
	Presumed to Contain Asbestos
	Strongly Presumed to Contain Asbestos
	No Access







Document Name	Author	Issued by	Revision Number	Issue Date	Page No
2021	David Kelly	Armour AS	1	20/10/2021	61



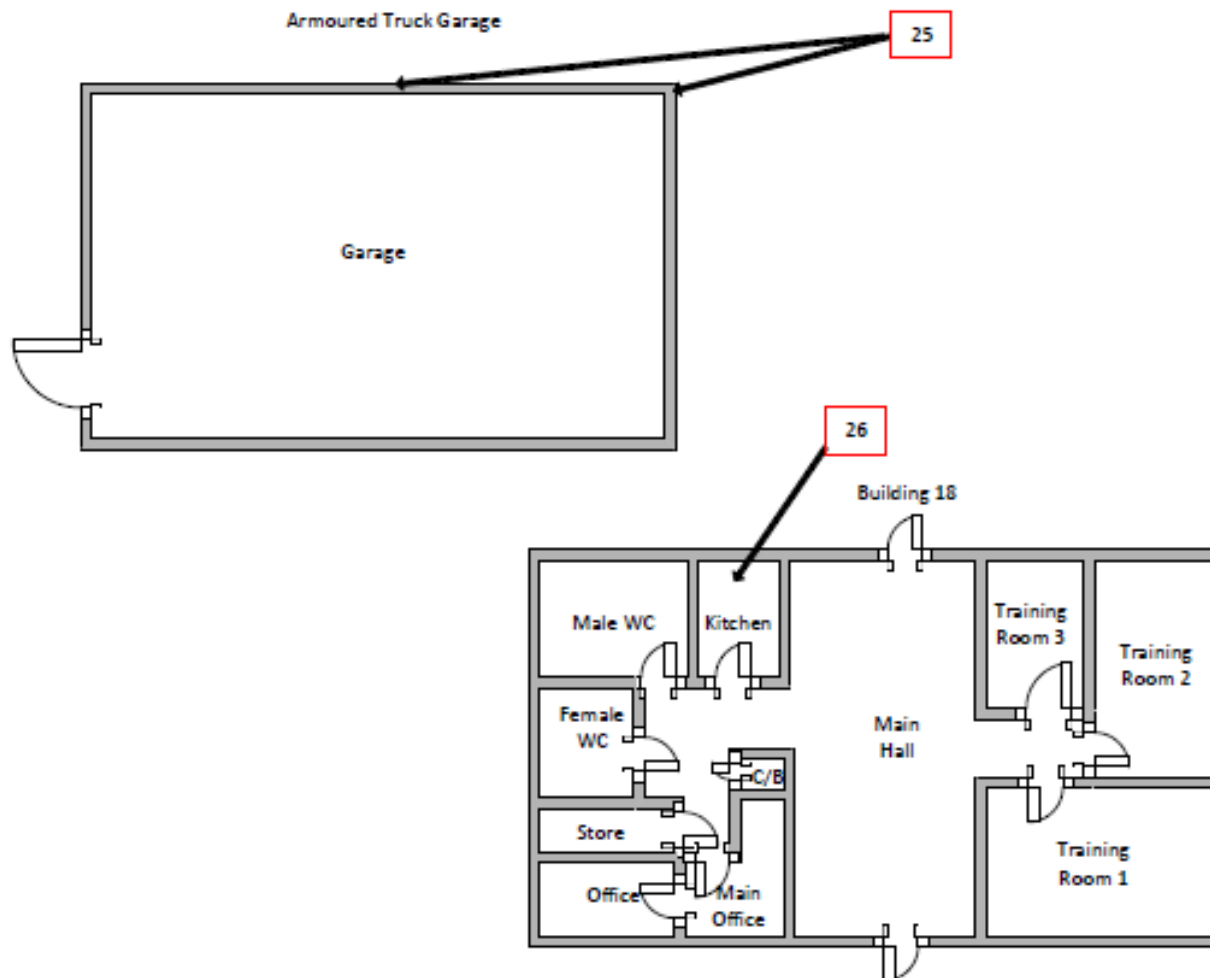
Key	
	Visual Inspection
	Asbestos Detected (Positive Item)
	No Asbestos Detected (Negative Item)
	Presumed to Contain Asbestos
	Strongly Presumed to Contain Asbestos
	No Access







Document Name	Author	Issued by	Revision Number	Issue Date	Page No
2021	David Kelly	Armour AS	1	20/10/2021	62



Key	
	Visual Inspection
	Asbestos Detected (Positive Item)
	No Asbestos Detected (Negative Item)
	Presumed to Contain Asbestos
	Strongly Presumed to Contain Asbestos
	No Access

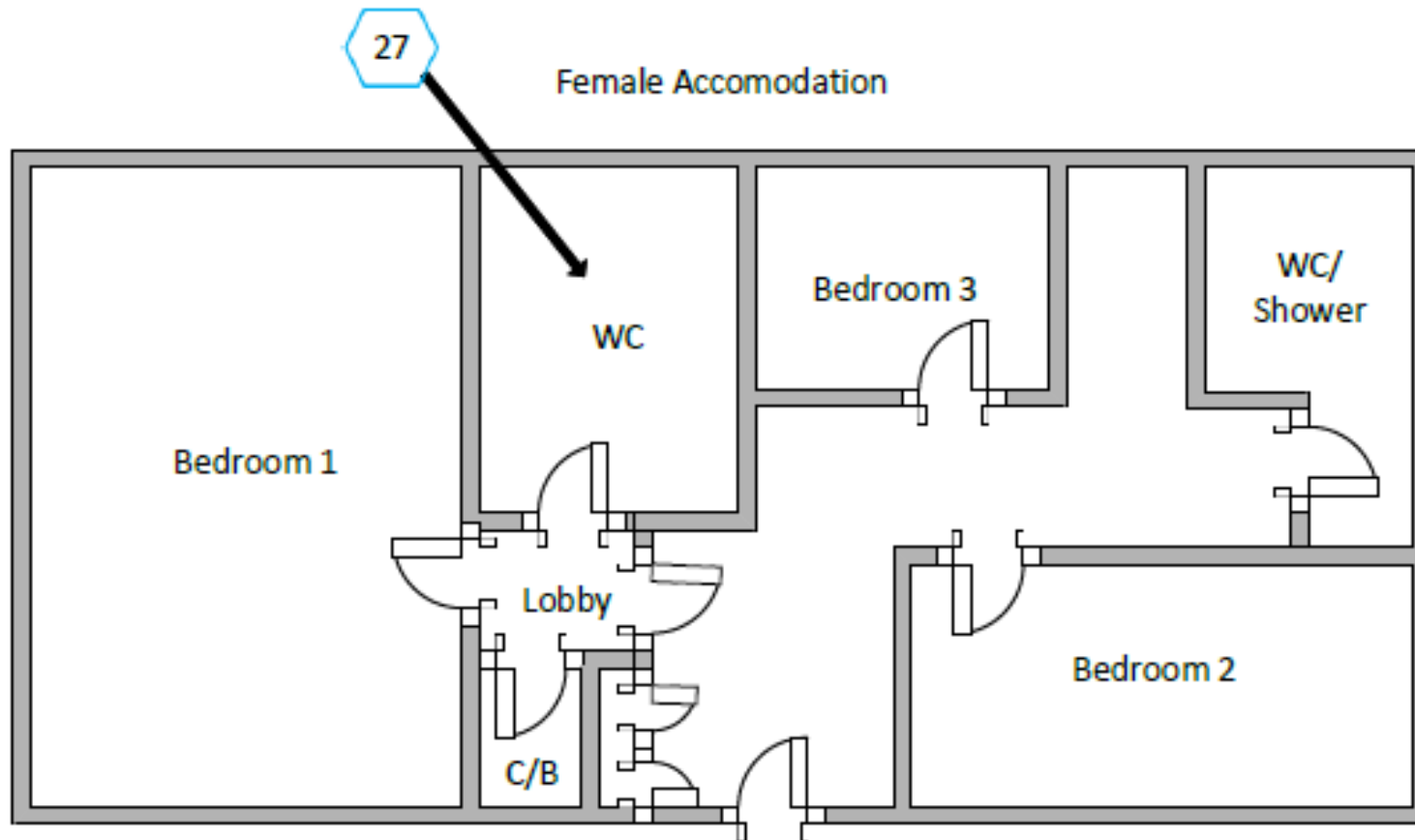
Document Name	Author	Issued by	Revision Number	Issue Date	Page No
2021	David Kelly	Armour AS	1	20/10/2021	63









Key	
	Visual Inspection
	Asbestos Detected (Positive Item)
	No Asbestos Detected (Negative Item)
	Presumed to Contain Asbestos
	Strongly Presumed to Contain Asbestos
	No Access

Document Name	Author	Issued by	Revision Number	Issue Date	Page No
2021	David Kelly	Armour AS	1	20/10/2021	64

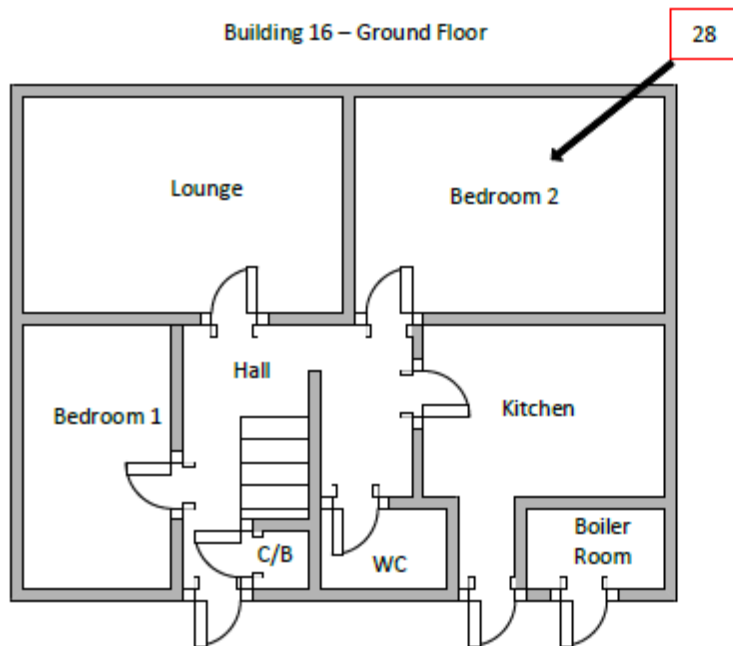




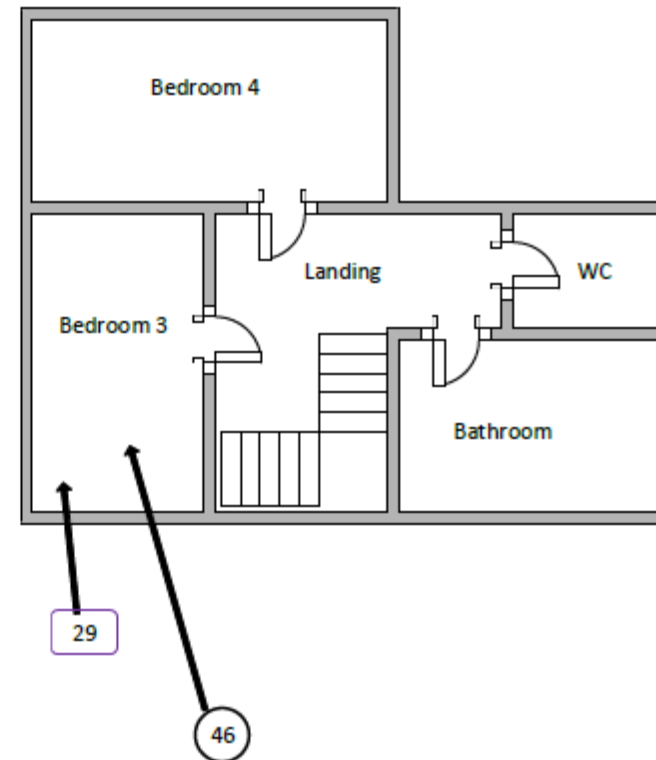
Key	
	Visual Inspection
	Asbestos Detected (Positive Item)
	No Asbestos Detected (Negative Item)
	Presumed to Contain Asbestos
	Strongly Presumed to Contain Asbestos
	No Access







Document Name	Author	Issued by	Revision Number	Issue Date	Page No
2021	David Kelly	Armour AS	1	20/10/2021	65

Building 16 – Ground Floor



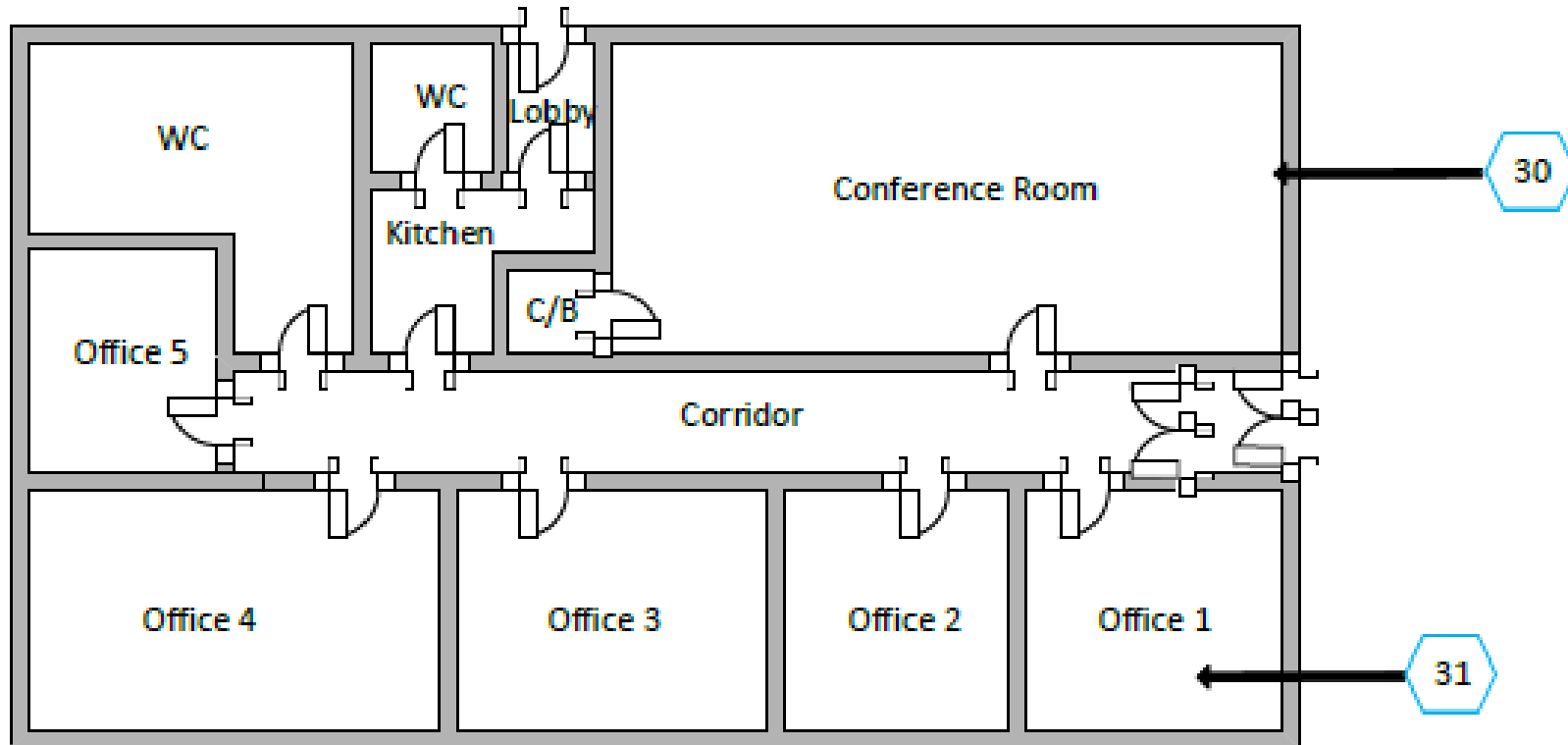
Building 16 – First Floor









Key	
	Visual Inspection
	Asbestos Detected (Positive Item)
	No Asbestos Detected (Negative Item)
	Presumed to Contain Asbestos
	Strongly Presumed to Contain Asbestos
	No Access

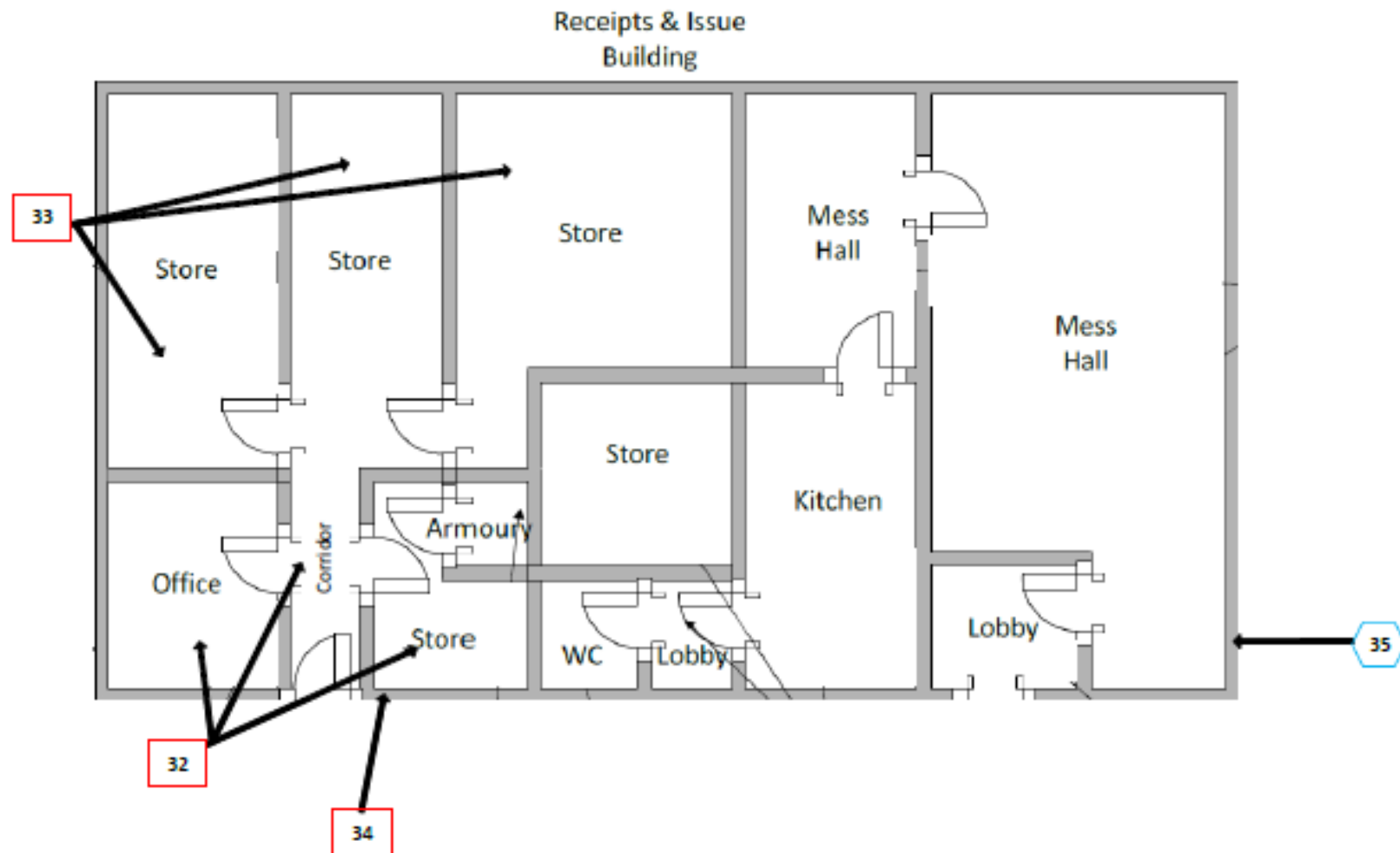
Document Name	Author	Issued by	Revision Number	Issue Date	Page No
2021	David Kelly	Armour AS	1	20/10/2021	66







## Building 15



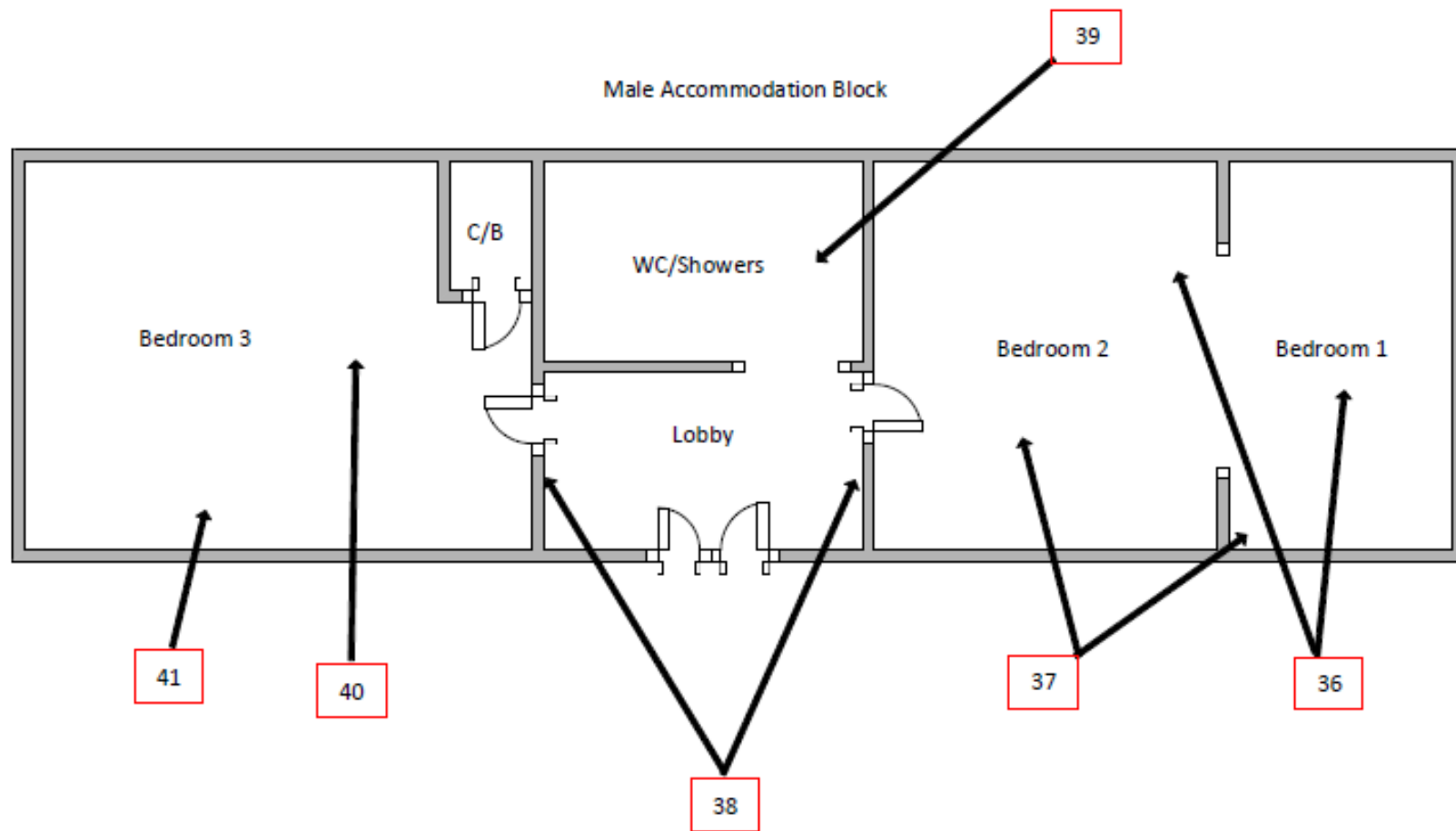
Key	
	Visual Inspection
	Asbestos Detected (Positive Item)
	No Asbestos Detected (Negative Item)
	Presumed to Contain Asbestos
	Strongly Presumed to Contain Asbestos
	No Access







Document Name	Author	Issued by	Revision Number	Issue Date	Page No
2021	David Kelly	Armour AS	1	20/10/2021	67



Key	
	Visual Inspection
	Asbestos Detected (Positive Item)
	No Asbestos Detected (Negative Item)
	Presumed to Contain Asbestos
	Strongly Presumed to Contain Asbestos
	No Access

Document Name	Author	Issued by	Revision Number	Issue Date	Page No
2021	David Kelly	Armour AS	1	20/10/2021	68



Key	
	Visual Inspection
	Asbestos Detected (Positive Item)
	No Asbestos Detected (Negative Item)
	Presumed to Contain Asbestos
	Strongly Presumed to Contain Asbestos
	No Access

Document Name	Author	Issued by	Revision Number	Issue Date	Page No
2021	David Kelly	Armour AS	1	20/10/2021	69



**I the surveyor can confirm that this report is accurate to my findings onsite and this survey has been Content checked by myself.**

**Checked by: Will Fyles**

**Date: 20/10/2021**

**I the Admin Manager can confirm that this report is accurate to the paperwork received and this survey has been quality checked by myself.**

**Checked by: Andrea Bansee**

**Date: 20/10/2021**

**Report Compiled By**

**Armour Analytical Services Ltd, Admirals Yard, Station Road, Bristol, BS34 6LR**

Document Name	Author	Issued by	Revision Number	Issue Date	Page No
2021	David Kelly	Armour AS	1	20/10/2021	70