

Project Number A-00414 (3700)

**Re-Inspection
Asbestos Survey Report**

**ACF County
Cheltenham
Gloucestershire
GL51 8JU**



Working in Partnership with Shield Services Group

Document Name	Author	Issued by	Revision Number	Issue Date	Page No
2020	David Kelly	Armour AS	0	23/12/2020	1

Contents

Section	
1	Contact Details
2	Executive Summary
3	Site Description & Survey Information
4	Positive, Presumed or No Access Items
5	Negative Photos Sheets
6	Survey Objectives
7	Survey Notes
8	Material Assessment Algorithm
9	Certificates of Bulk Analysis
10	Site Plan

Document Name	Author	Issued by	Revision Number	Issue Date	Page No
2020	David Kelly	Armour AS	0	23/12/2020	2

Section 1: Contact Details

Client Details:		Instructing Party:	
Wessex RFCA Mount House Mount Street Taunton TA1 3QE		Shield Caxton Business Park Warmley BS30 8XJ	
Contact Name:	Kelvin Walker	Contact Name:	Chloe Smith
Tel: 01823 250116	Fax: N/A	Tel: 01173012650	Fax: N/A

Site Address:		Report Author:	
ACF County Cheltenham Gloucestershire GL51 8JU		Armour Analytical Services Admirals Yard Station Road Bristol BS34 6LR	
Contact Name:	Kelvin Walker	Contact Name:	Emma Humphreys
Tel: 01823 250116	Fax: N/A	Mobile: 07468535836	

Lead Surveyor's Name:	Lead Surveyor's Authorising Signature:
David Kelly	

Document Name	Author	Issued by	Revision Number	Issue Date	Page No
2020	David Kelly	Armour AS	0	23/12/2020	3

Section 2: Executive Summary

Sample Number	Sample Type	Location	Analysis
DK/01	Profiled Roof – Cement	Ground Floor Garage 026	N.A.D.I.S

N.A.D.I.S – No Asbestos Detected in Sample

In addition to the above sampled items, the following items have been either been “Strongly Presumed” To Contain Asbestos or “Presumed” to Contain Asbestos as they were either visually identified in being so, labelled after previously being sampled on prior surveys or not accessible at the time of the survey:

Status	Sample Type	Location
Presumed	Adhesive under Parquet Flooring - Bitumen	Ground Floor Commandant Office 002
Presumed	Old Electrical Box and Mains Cable - Gaskets (rope/woven)	Ground Floor Electrical Cupboard 003
Presumed	Adhesive under Parquet Flooring - Bitumen	Ground Floor Corridors x 2 & Lobby 004
Previously Sampled	Floor Tiles & Adhesive - Vinyl	Ground Floor Classroom 2 005
Previously Sampled	Floor Tiles & Adhesive - Vinyl	Ground Floor Store 006
Presumed	Safe - Asbestos Insulation Board	Ground Floor Store 007
Presumed	Adhesive under Parquet Flooring - Bitumen	Ground Floor Corridors x 2 008
Previously Sampled	Floor Tiles & Adhesive - Vinyl	Ground Floor Kitchen 009
Presumed	Adhesive under Parquet Flooring - Bitumen	Ground Floor Drill Hall 010
Presumed	Insulation to Pipework - Insulation	Ground Floor Floor Ducts 011
Presumed	Heaters - No Access Gained	Ground Floor Drill Hall 012
Presumed	Adhesive under Parquet Flooring - Bitumen	Ground Floor Store 013
Presumed	Heater - No Access Gained	Ground Floor Store 014
Presumed	Door Casings - No Access Gained	Ground Floor Armoury 015
Presumed	Adhesive under Parquet Flooring - Bitumen	Ground Floor Corridor 016
Presumed	Adhesive under Parquet Flooring - Bitumen	Ground Floor Side Store & Banwell Store 017

Document Name	Author	Issued by	Revision Number	Issue Date	Page No
2020	David Kelly	Armour AS	0	23/12/2020	4

Status	Sample Type	Location
Presumed	Boilers - No Access Gained	Ground Floor Boiler Room 025
Presumed	Adhesive under Parquet Flooring - Bitumen	First Floor Offices x 3 018
Presumed	Adhesive under Parquet Flooring - Bitumen	First Floor Landing & Corridor 019
Presumed	Adhesive under Parquet Flooring - Bitumen	First Floor Conference Room 020
Presumed	Gaskets - Gaskets (compressed)	First Floor Tank Room 021
Presumed	Bunnie Incinerator - No Access Gained	First Floor Female WC 022
Previously Sampled	Flue Pipe - Cement	First Floor Ladies WC 023
Presumed	Adhesive under Parquet Flooring - Bitumen	First Floor Office 024
Previously Sampled	Damp Proof Course - Bitumen	External Walls 001

The presence of asbestos in these areas cannot be ascertained at this time. If any works are to be carried out in these areas in the future, then these works should be approached cautiously.

In accordance with current legislation, any suspect materials encountered in these areas are to be assumed to contain asbestos until proven otherwise. This will normally involve cessation of works in the affected area.

Document Name	Author	Issued by	Revision Number	Issue Date	Page No
2020	David Kelly	Armour AS	0	23/12/2020	5

Section 3: Site Description & Survey Information

Brief description on the general building construction

Brick and block construction with a flat felt roof.

Caveat for no access areas

No access within live electrics, heaters or boilers.
No access under Parquet flooring without damaging the floor.

EXTERNAL MATERIALS

Roof Type	Flat
Roof Materials	Felt
Soffits	N/A
Fascia	Timber
Walls	Brick
Verge Under cloaking	N/A
Guttering	Plastic
Downpipes	Plastic
Window/Door frames	UPVC
Other Materials	N/A

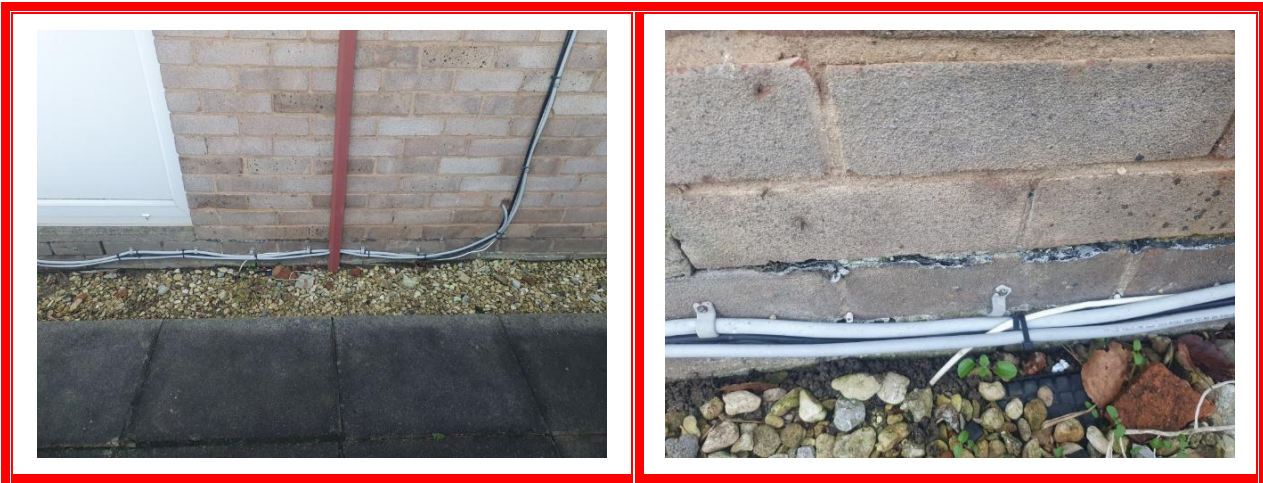
INTERNAL MATERIALS

Loft Insulation	N/A
Roof Underlining	N/A
Ceilings	Plasterboard, Concrete, Timber
Walls <i>Internal</i>	Brick, Plasterboard
Floors	Carpet, Lino, Tiles, Parquet
Doors/Frames	Metal, Timber
Pipework/Insulation	Foam, MMMF
Boxings	Plasterboard, Timber, MDF
Boiler Make	Hamworthy
Flue Pipes	Metal
Storage Heaters	Gas Blower Heaters
Electrical Boxes/Machinery	No Access
Ducting/Risers	Timber Risers
Stairs	Concrete
Lift Shafts	None
Other Materials	N/A

Document Name	Author	Issued by	Revision Number	Issue Date	Page No
2020	David Kelly	Armour AS	0	23/12/2020	6

Section 4: Positive, Presumed or No Access Items

Item No:	1	Sample No:	N/A
Location:	External - Walls 001		



Material Description:	Damp Proof Course - Bitumen	
Identification:	Previously Sampled - Asbestos Detected	
Approx. quantity:	Entire Perimeter	
Accessibility	Difficult	Assessment Score
Product type:	Bitumen	1
Extent of Damage:	Slight / minor damage	1
Surface Treatment:	Non-friable	0
Asbestos type:	Chrysotile	1
Material Assessment Score:		3
Priority Assessment Score:		Negligible
Action:	Manage	
Comments:	Previously sampled ref: Armour 9/9/19 Sample DK/1	

Document Name	Author	Issued by	Revision Number	Issue Date	Page No
2020	David Kelly	Armour AS	0	23/12/2020	7

Item No: 2

Sample No: N/A

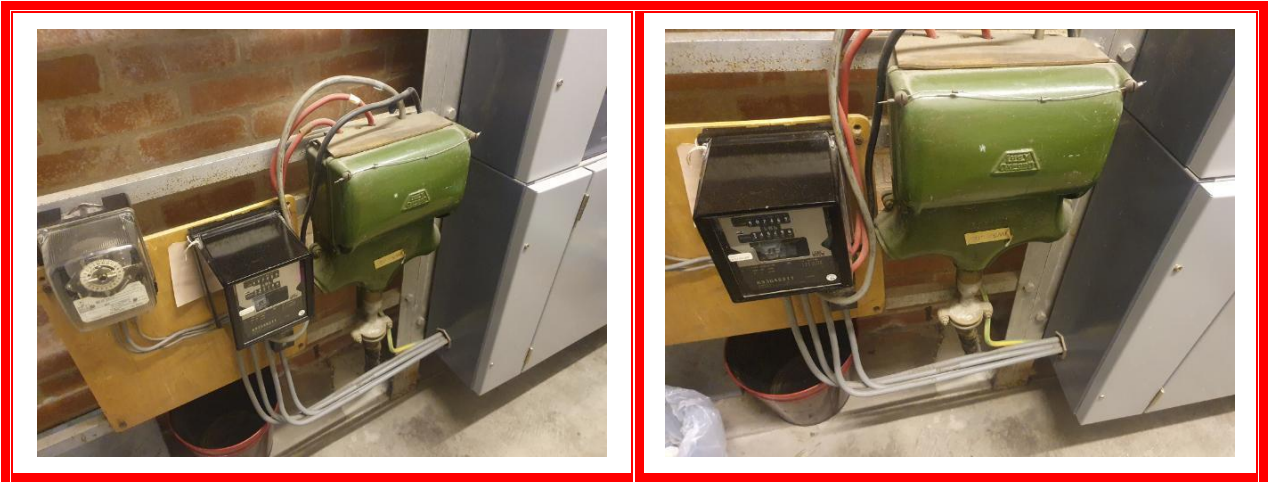
Location: Ground Floor - Commandant Office 002



Material Description:	Adhesive under Parquet Flooring - Bitumen	
Identification:	Presumed to Contain Asbestos	
Approx. quantity:	8 m ²	
Accessibility	Difficult	<i>Assessment Score</i>
Product type:	Bitumen	1
Extent of Damage:	Slight / minor damage	1
Surface Treatment:	Non-friable	0
Asbestos type:	Chrysotile	1
Material Assessment Score:		3
Priority Assessment Score:		Negligible
Action:	Manage	
Comments:	Under carpet. No access to sample without damaging flooring	

Document Name	Author	Issued by	Revision Number	Issue Date	Page No
2020	David Kelly	Armour AS	0	23/12/2020	8

Item No:	3	Sample No:	N/A
Location:	Ground Floor - Electrical Cupboard 003		



Material Description:	Old Electrical Box and Mains Cable - Gaskets (rope/woven)	
Identification:	Presumed to Contain Asbestos	
Approx. quantity:	1 no	
Accessibility	Difficult	<i>Assessment Score</i>
Product type:	Flashguards	2
Extent of Damage:	Minor damage	1
Surface Treatment:	Woven	1
Asbestos type:	Chrysotile	1
Material Assessment Score:		5
Priority Assessment Score:		Low
Action:	Manage	
Comments:	Not possible to sample as live	

Document Name	Author	Issued by	Revision Number	Issue Date	Page No
2020	David Kelly	Armour AS	0	23/12/2020	9

Item No: 4 **Sample No:** N/A

Location: Ground Floor - Corridors x 2 and Lobby 004



Material Description:	Adhesive under Parquet Flooring - Bitumen	
Identification:	Presumed to Contain Asbestos	
Approx. quantity:	60 m ²	
Accessibility	Difficult	<i>Assessment Score</i>
Product type:	Bitumen	1
Extent of Damage:	Slight / minor damage	1
Surface Treatment:	Non-friable	0
Asbestos type:	Chrysotile	1
Material Assessment Score:		3
Priority Assessment Score:		Negligible
Action:	Manage	
Comments:	Under carpet. No access to sample without damaging flooring	

Document Name	Author	Issued by	Revision Number	Issue Date	Page No
2020	David Kelly	Armour AS	0	23/12/2020	10

Item No: 5 **Sample No:** N/A

Location: Ground Floor - Classroom 2 005



Material Description:	Floor Tiles & Adhesive - Vinyl	
Identification:	Previously Sampled - Asbestos Detected	
Approx. quantity:	24 m ²	
Accessibility	Easy	<i>Assessment Score</i>
Product type:	Vinyl	1
Extent of Damage:	Slight / minor damage	1
Surface Treatment:	Non-friable	0
Asbestos type:	Chrysotile	1
Material Assessment Score:		3
Priority Assessment Score:		Negligible
Action:	Manage	
Comments:	Previously sampled ref: Armour 9/9/19 Sample DK/4	

Document Name	Author	Issued by	Revision Number	Issue Date	Page No
2020	David Kelly	Armour AS	0	23/12/2020	11

Item No:	6	Sample No:	N/A
Location:	Ground Floor - Store 006		



Material Description:	Floor Tiles & Adhesive - Vinyl	
Identification:	Previously Sampled - Asbestos Detected	
Approx. quantity:	10 m ²	
Accessibility	Easy	<i>Assessment Score</i>
Product type:	Vinyl	1
Extent of Damage:	Moderate damage	2
Surface Treatment:	Non-friable	0
Asbestos type:	Chrysotile	1
Material Assessment Score:		4
Priority Assessment Score:		Negligible
Action:	Manage	
Comments:	Previously sampled ref: Armour 9/9/19 Sample DK/5	

Document Name	Author	Issued by	Revision Number	Issue Date	Page No
2020	David Kelly	Armour AS	0	23/12/2020	12

Item No: 7 **Sample No:** N/A

Location: Ground Floor - Store 007



Material Description:	Safe - Asbestos Insulation Board	
Identification:	Presumed to Contain Asbestos	
Approx. quantity:	1 no	
Accessibility	Difficult	<i>Assessment Score</i>
Product type:	Asbestos insulating board	2
Extent of Damage:	Minor damage	1
Surface Treatment:	Unsealed AIB	1
Asbestos type:	Amosite, Chrysotile	2
Material Assessment Score:		6
Priority Assessment Score:		Low
Action:	Manage	
Comments:	No access with safe casings without damaging safe	

Document Name	Author	Issued by	Revision Number	Issue Date	Page No
2020	David Kelly	Armour AS	0	23/12/2020	13

Item No:	8	Sample No:	N/A
Location:	Ground Floor - Corridors x 2 008		



Material Description:	Adhesive under Parquet Flooring - Bitumen	
Identification:	Presumed to Contain Asbestos	
Approx. quantity:	26 m ²	
Accessibility	Difficult	<i>Assessment Score</i>
Product type:	Bitumen	1
Extent of Damage:	Slight / minor damage	1
Surface Treatment:	Non-friable	0
Asbestos type:	Chrysotile	1
Material Assessment Score:		3
Priority Assessment Score:		Negligible
Action:	Manage	
Comments:	No access to sample without damaging flooring	

Document Name	Author	Issued by	Revision Number	Issue Date	Page No
2020	David Kelly	Armour AS	0	23/12/2020	14

Item No:	9	Sample No:	N/A
Location:	Ground Floor - Kitchen 009		



Material Description:	Floor Tiles & Adhesive - Vinyl	
Identification:	Previously Sampled - Asbestos Detected	
Approx. quantity:	2 no	
Accessibility	Medium	<i>Assessment Score</i>
Product type:	Vinyl	1
Extent of Damage:	Slight / minor damage	1
Surface Treatment:	Non-friable	0
Asbestos type:	Chrysotile	1
Material Assessment Score:		3
Priority Assessment Score:		Negligible
Action:	Manage	
Comments:	Previously sampled ref: Armour 9/9/19 Sample DK/6	

Document Name	Author	Issued by	Revision Number	Issue Date	Page No
2020	David Kelly	Armour AS	0	23/12/2020	15

Item No:	10	Sample No:	N/A
Location:	Ground Floor - Drill Hall 010		



Material Description:	Adhesive under Parquet Flooring - Bitumen	
Identification:	Presumed to Contain Asbestos	
Approx. quantity:	66 m ²	
Accessibility	Difficult	<i>Assessment Score</i>
Product type:	Bitumen	1
Extent of Damage:	Slight / minor damage	1
Surface Treatment:	Non-friable	0
Asbestos type:	Chrysotile	1
Material Assessment Score:		3
Priority Assessment Score:		Negligible
Action:	Manage	
Comments:	No access to sample without damaging flooring	

Document Name	Author	Issued by	Revision Number	Issue Date	Page No
2020	David Kelly	Armour AS	0	23/12/2020	16

Item No:	11	Sample No:	N/A
Location:	Ground Floor - Floor Ducts 011		



Material Description:	Insulation to Pipework - Insulation	
Identification:	Presumed to Contain Asbestos	
Approx. quantity:	Unknown	
Accessibility	Difficult	<i>Assessment Score</i>
Product type:	Pipe insulation	3
Extent of Damage:	Major damage	3
Surface Treatment:	Unsealed Insulation	3
Asbestos type:	Chrysotile	3
Material Assessment Score:		12
Priority Assessment Score:		High
Action:	Manage	
Comments:	No access within floor ducts	

Document Name	Author	Issued by	Revision Number	Issue Date	Page No
2020	David Kelly	Armour AS	0	23/12/2020	17

Item No:	12	Sample No:	N/A
Location:	Ground Floor - Drill Hall 012		



Material Description:	Heaters - No Access Gained	
Identification:	Presumed to Contain Asbestos	
Approx. quantity:	2 no	
Accessibility	Difficult	Assessment Score
Product type:	Asbestos insulating board	2
Extent of Damage:	Minor damage	1
Surface Treatment:	Unsealed AIB	2
Asbestos type:	Amosite, Chrysotile	2
Material Assessment Score:		7
Priority Assessment Score:		Medium
Action:	Manage	
Comments:	No access within live heaters	

Document Name	Author	Issued by	Revision Number	Issue Date	Page No
2020	David Kelly	Armour AS	0	23/12/2020	18

Item No: 13

Sample No: N/A

Location: Ground Floor - Store 013



Material Description:	Adhesive under Parquet Flooring - Bitumen	
Identification:	Presumed to Contain Asbestos	
Approx. quantity:	90 m ²	
Accessibility	Difficult	<i>Assessment Score</i>
Product type:	Bitumen	1
Extent of Damage:	Slight / minor damage	1
Surface Treatment:	Non-friable	0
Asbestos type:	Chrysotile	1
Material Assessment Score:		3
Priority Assessment Score:		Negligible
Action:	Manage	
Comments:	No access to sample without damaging flooring	

Document Name	Author	Issued by	Revision Number	Issue Date	Page No
2020	David Kelly	Armour AS	0	23/12/2020	19

Item No:	14	Sample No:	N/A
Location:	Ground Floor - Store 014		



Material Description:	Heater - No Access Gained	
Identification:	Presumed to Contain Asbestos	
Approx. quantity:	1 no	
Accessibility	Difficult	<i>Assessment Score</i>
Product type:	Asbestos insulating board	2
Extent of Damage:	Minor damage	1
Surface Treatment:	Unsealed AIB	2
Asbestos type:	Amosite, Chrysotile	2
Material Assessment Score:		7
Priority Assessment Score:		Medium
Action:	Manage	
Comments:	No access within live heater	

Document Name	Author	Issued by	Revision Number	Issue Date	Page No
2020	David Kelly	Armour AS	0	23/12/2020	20

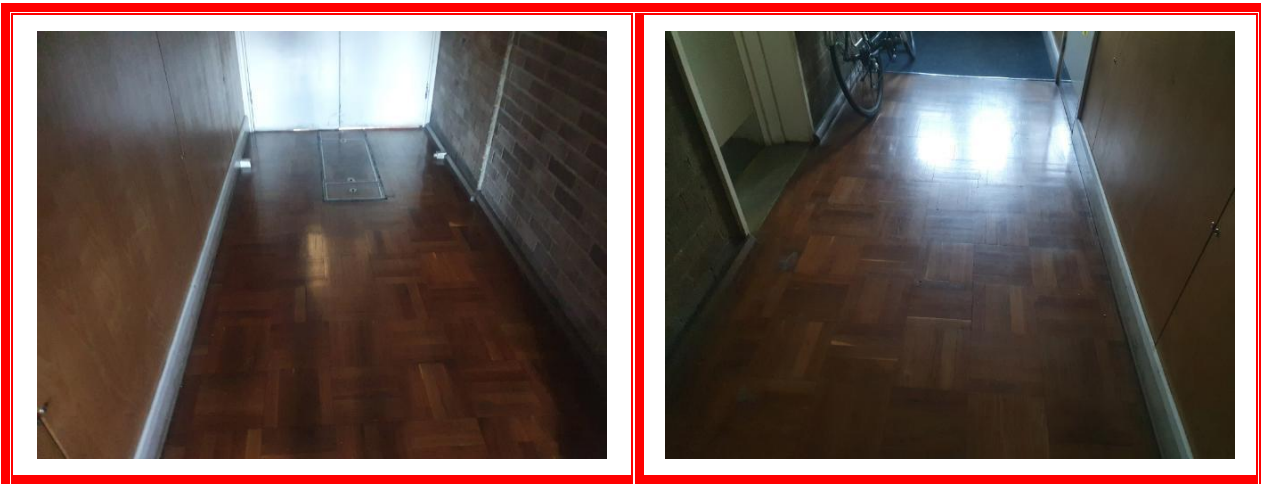
Item No:	15	Sample No:	N/A
Location:	Ground Floor - Armoury 015		



Material Description:	Door Casings - No Access Gained	
Identification:	Presumed to Contain Asbestos	
Approx. quantity:	2 no	
Accessibility	Difficult	<i>Assessment Score</i>
Product type:	Asbestos insulating board	2
Extent of Damage:	Minor damage	1
Surface Treatment:	Unsealed AIB	2
Asbestos type:	Amosite, Chrysotile	2
Material Assessment Score:		7
Priority Assessment Score:		Medium
Action:	Manage	
Comments:	No access within door casings without damaging doors	

Document Name	Author	Issued by	Revision Number	Issue Date	Page No
2020	David Kelly	Armour AS	0	23/12/2020	21

Item No:	16	Sample No:	N/A
Location:	Ground Floor - Corridor 016		



Material Description:	Adhesive under Parquet Flooring - Bitumen	
Identification:	Presumed to Contain Asbestos	
Approx. quantity:	10 m ²	
Accessibility	Difficult	<i>Assessment Score</i>
Product type:	Bitumen	1
Extent of Damage:	Slight / minor damage	1
Surface Treatment:	Non-friable	0
Asbestos type:	Chrysotile	1
Material Assessment Score:		3
Priority Assessment Score:		Negligible
Action:	Manage	
Comments:	No access to sample without damaging flooring	

Document Name	Author	Issued by	Revision Number	Issue Date	Page No
2020	David Kelly	Armour AS	0	23/12/2020	22

Item No: 17

Sample No: N/A

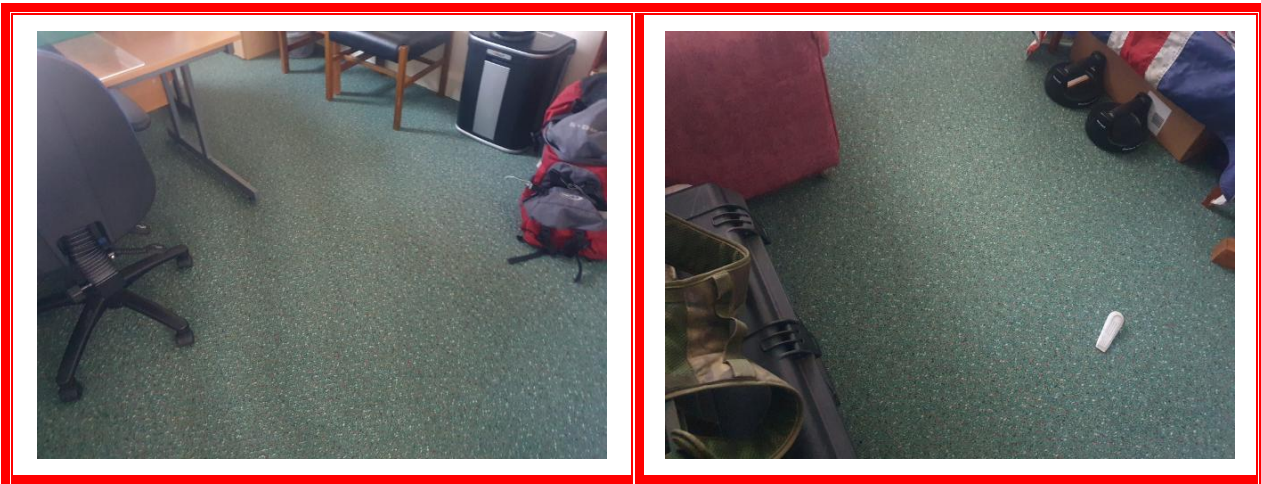
Location: Ground Floor - Side Store and Banwell Store 017



Material Description:	Adhesive under Parquet Flooring - Bitumen	
Identification:	Presumed to Contain Asbestos	
Approx. quantity:	22 m ²	
Accessibility	Difficult	<i>Assessment Score</i>
Product type:	Bitumen	1
Extent of Damage:	Slight / minor damage	1
Surface Treatment:	Non-friable	0
Asbestos type:	Chrysotile	1
Material Assessment Score:		3
Priority Assessment Score:		Negligible
Action:	Manage	
Comments:	No access to sample without damaging flooring	

Document Name	Author	Issued by	Revision Number	Issue Date	Page No
2020	David Kelly	Armour AS	0	23/12/2020	23

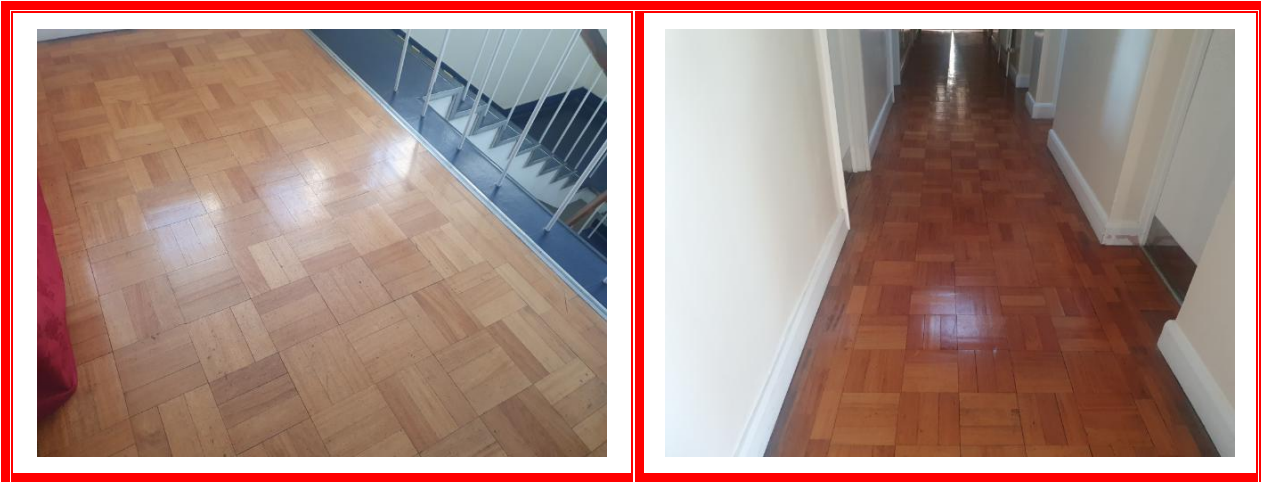
Item No:	18	Sample No:	N/A
Location:	First Floor - Offices x 3 018		



Material Description:	Adhesive under Parquet Flooring - Bitumen	
Identification:	Presumed to Contain Asbestos	
Approx. quantity:	32 m ²	
Accessibility	Difficult	<i>Assessment Score</i>
Product type:	Bitumen	1
Extent of Damage:	Slight / minor damage	1
Surface Treatment:	Non-friable	0
Asbestos type:	Chrysotile	1
Material Assessment Score:		3
Priority Assessment Score:		Negligible
Action:	Manage	
Comments:	Under carpet. No access to sample without damaging flooring	

Document Name	Author	Issued by	Revision Number	Issue Date	Page No
2020	David Kelly	Armour AS	0	23/12/2020	24

Item No:	19	Sample No:	N/A
Location:	First Floor - Landing and Corridor 019		



Material Description:	Adhesive under Parquet Flooring - Bitumen	
Identification:	Presumed to Contain Asbestos	
Approx. quantity:	48 m ²	
Accessibility	Difficult	<i>Assessment Score</i>
Product type:	Bitumen	1
Extent of Damage:	Slight / minor damage	1
Surface Treatment:	Non-friable	0
Asbestos type:	Chrysotile	1
Material Assessment Score:		3
Priority Assessment Score:		Negligible
Action:	Manage	
Comments:	No access to sample without damaging flooring	

Document Name	Author	Issued by	Revision Number	Issue Date	Page No
2020	David Kelly	Armour AS	0	23/12/2020	25

Item No:	20	Sample No:	N/A
Location:	First Floor - Conference Room 020		



Material Description:	Adhesive under Parquet Flooring - Bitumen	
Identification:	Presumed to Contain Asbestos	
Approx. quantity:	50 m ²	
Accessibility	Difficult	<i>Assessment Score</i>
Product type:	Bitumen	1
Extent of Damage:	Slight / minor damage	1
Surface Treatment:	Non-friable	0
Asbestos type:	Chrysotile	1
Material Assessment Score:		3
Priority Assessment Score:		Negligible
Action:	Manage	
Comments:	Under carpet. No access to sample without damaging flooring	

Document Name	Author	Issued by	Revision Number	Issue Date	Page No
2020	David Kelly	Armour AS	0	23/12/2020	26

Item No: 21

Sample No: N/A

Location: First Floor - Tank Room 021



Material Description:	Gaskets - Gaskets (compressed)	
Identification:	Presumed to Contain Asbestos	
Approx. quantity:	2 no	
Accessibility	Difficult	<i>Assessment Score</i>
Product type:	Gaskets	2
Extent of Damage:	Minor damage	1
Surface Treatment:	Gaskets	1
Asbestos type:	Chrysotile	1
Material Assessment Score:		5
Priority Assessment Score:		Low
Action:	Manage	
Comments:	Not possible to sample as gaskets were to inset within flanges	

Document Name	Author	Issued by	Revision Number	Issue Date	Page No
2020	David Kelly	Armour AS	0	23/12/2020	27

Item No:	22	Sample No:	N/A
Location:	First Floor - Female WC 022		



Material Description:	Bunnie Incinerator - No Access Gained	
Identification:	Presumed to Contain Asbestos	
Approx. quantity:	1 no	
Accessibility	Difficult	<i>Assessment Score</i>
Product type:	Asbestos insulating board	2
Extent of Damage:	Minor damage	1
Surface Treatment:	Unsealed AIB	2
Asbestos type:	Amosite	2
Material Assessment Score:		7
Priority Assessment Score:		Medium
Action:	Manage	
Comments:	Presumed asbestos insulation board within bunnie incinerator. No access possible as live	

Document Name	Author	Issued by	Revision Number	Issue Date	Page No
2020	David Kelly	Armour AS	0	23/12/2020	28

Item No:	23	Sample No:	N/A
Location:	First Floor - Ladies WC 023		



Material Description:	Flue Pipe - Cement	
Identification:	Previously Sampled - Asbestos Detected	
Approx. quantity:	2 LM	
Accessibility	Medium	Assessment Score
Product type:	Cement	1
Extent of Damage:	Slight / minor damage	1
Surface Treatment:	Unsealed Cement	1
Asbestos type:	Chrysotile	1
Material Assessment Score:		4
Priority Assessment Score:		Negligible
Action:	Manage	
Comments:	Previously sampled ref: Armour 9/9/19 Sample DK/7	

Document Name	Author	Issued by	Revision Number	Issue Date	Page No
2020	David Kelly	Armour AS	0	23/12/2020	29

Item No:	24	Sample No:	N/A
Location:	First Floor - Office 024		



Material Description:	Adhesive under Parquet Flooring - Bitumen	
Identification:	Presumed to Contain Asbestos	
Approx. quantity:	20 m ²	
Accessibility	Difficult	<i>Assessment Score</i>
Product type:	Bitumen	1
Extent of Damage:	Slight / minor damage	1
Surface Treatment:	Non-friable	0
Asbestos type:	Chrysotile	1
Material Assessment Score:		3
Priority Assessment Score:		Negligible
Action:	Manage	
Comments:	Under carpet. No access to sample without damaging flooring	

Document Name	Author	Issued by	Revision Number	Issue Date	Page No
2020	David Kelly	Armour AS	0	23/12/2020	30

Item No:	25	Sample No:	N/A
Location:	Ground Floor - Boiler Room 025		



Material Description:	Boilers - No Access Gained	
Identification:	Presumed to Contain Asbestos	
Approx. quantity:	2 no	
Accessibility	Difficult	<i>Assessment Score</i>
Product type:	Asbestos insulating board	2
Extent of Damage:	Minor damage	1
Surface Treatment:	Unsealed AIB	2
Asbestos type:	Chrysotile, Amosite	2
Material Assessment Score:		7
Priority Assessment Score:		Medium
Action:	Manage	
Comments:	No access within live Hamworthy boilers	

Document Name	Author	Issued by	Revision Number	Issue Date	Page No
2020	David Kelly	Armour AS	0	23/12/2020	31

Section 5: Negative Items

Item No:	26	Sample No:	DK/01
Location:	Ground Floor - Garage 026		



Material Description:	Profiled Roof - Cement	
Identification:	Sampled - No Asbestos Found	
Approx. quantity:	N/A	
Accessibility	N/A	Assessment Score
Product type:	N/A	N/A
Extent of Damage:	N/A	N/A
Surface Treatment:	N/A	N/A
Asbestos type:	N/A	N/A
Material Assessment Score:		
Priority Assessment Score:		
Action:	N/A	
Comments:	Previously un-accessed garage	

Document Name	Author	Issued by	Revision Number	Issue Date	Page No
2020	David Kelly	Armour AS	0	23/12/2020	32

Section 6: Survey Objectives

Instructions were received from Kelvin Walker of Wessex RFCA to carry out a Re-Inspection asbestos survey at ACF County, Cheltenham, Gloucestershire, GL51 8JU in accordance with HSG264 and Armour Analytical's quality procedures.

The survey was carried out on 11 December 2020 to 14 December 2020 by David Kelly with the objective of facilitating a Re-Inspection report.

Document Name	Author	Issued by	Revision Number	Issue Date	Page No
2020	David Kelly	Armour AS	0	23/12/2020	33

Section 7: Survey Notes

This report has been written with reference to the various Guidance Notes etc, issued, and current at the date of this report and describes circumstances at the site on the date the investigation took place.

Where similar items exist in the building, only one or two samples may have been taken to ascertain the material content. It was assumed that similar products were of the same material.

Any person undertaking work within the buildings should be told of the presence of asbestos. This briefing also applies to any other person associated with the site, including staff, sub-contractors and others.

The drawings in the report are not to scale and are illustrative only to indicate approximate locations. The descriptions used are for location identification purposes.

All the recommendations described in this report are based upon assumptions made after consideration of the type of material, condition of the material, its location, analysis result and type of use the area is thought to be subjected to. However, statutory authorities or others could require amendments based on local knowledge, change in legislation, change in use or indeed other conditions or criteria.

Samples taken from floor tiles (or similar material) may include a bitumen adhesive as part of the sample. It is known that some proprietary brands of bitumen have an asbestos content and this will be included as an integral part of the bulk sample unless otherwise stated.

Document Name	Author	Issued by	Revision Number	Issue Date	Page No
2020	David Kelly	Armour AS	0	23/12/2020	34

Section 8: Material Assessment Algorithm

Variable	Score	Examples
Product type	1	Vinyl, 'Bakelite', Cement
	2	Asbestos Insulating Board, Paper, Rope
	3	Pipe Insulation, Spray Coating, Friable Debris
Condition / Damage	0	Good
	1	Slight / Minor Damage
	2	Moderate Damage – Breakage to Surface Treatment
	3	Major Damage – Smashed or Exposed Material
Surface Treatment	0	Non-Friable E.G. Vinyl
	1	Enclosed Insulation, Encapsulated AIB
	2	Unsealed AIB, Encapsulated Insulation
	3	Unsealed Insulation r Spray Coating
Asbestos Type	1	Chrysotile
	2	Amosite & Other Amphiboles
	3	Crocidolite

The scores from each of the four sections are added together to produce a risk score:

Risk score	Risk assessment
10 or more	High risk
7 – 9	Medium risk
5 – 6	Low risk
4 & below	Negligible risk

Section 9: Certificates of Bulk Analysis



Our Ref: J200372 FI: 1
Your Ref: 3700
Date: 21/12/2020

ENVIROCHEM

Analytical Laboratories Ltd.

12 The Gardens
Broadcut, Fareham

Hampshire
PO16 8SS



Tel: (01329) 287777
Fax: (01329) 287755
www.envirochem.co.uk
office@envirochem.co.uk

Asbestos Fibre Identification Report

Client: Armour Analytical Services Ltd
Admirals Yard, Station Road, Patchway, Bristol, BS34 6LR
Site Address: ACF County, Cheltenham, Gloucestershire, GL51 8JU
Sampled By: Armour Analytical Services Ltd
Date sampled/received: 18th December 2020
Date analysed: 21st December 2020
Analyst/s: Raphael Mirzaian
Analysis Location: 12 The Gardens, Broadcut, Fareham, Hampshire, PO16 8SS

ANALYTICAL PROCEDURE

Fibre identification was carried out in accordance with the documented 'in-house' method (2.01) based on the HSE Guidance Note HSG 248. These employed stereo microscopy, polarized microscopy and dispersion staining techniques.

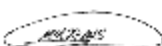
RESULTS

Sample No.	Sample Ref.	Location	Asbestos Detected	Asbestos Type
DK/01	BS647019	Garage - Profiled cement roof	No	

NOTES:

1. Sample(s) were examined for the presence of 6 types of asbestos fibres: crocidolite (blue), amosite (brown), chrysotile (white), anthophyllite, actinolite and tremolite.
2. The results shown in this report specifically refer to the sample(s) named as received unless otherwise stated and samples collected by the client are evaluated using information provided by the client. For samples collected by the client the date of receipt is deemed to be the same as the date sampled.
3. Envirochem is a UKAS accredited laboratory for sampling and identification of asbestos containing materials.
4. Comments, observations and opinions are outside the scope of UKAS accreditation.
5. The analytical method in the HSG248 does not quantify the amount of asbestos present, therefore UKAS accreditation does not permit quantification.
6. If, during fibre identification, only 1 or 2 fibres are seen and identified as asbestos, then the term 'trace asbestos identified' is used.
7. This report shall not be reproduced except in full, without written approval of Envirochem.

SIGNATURE:



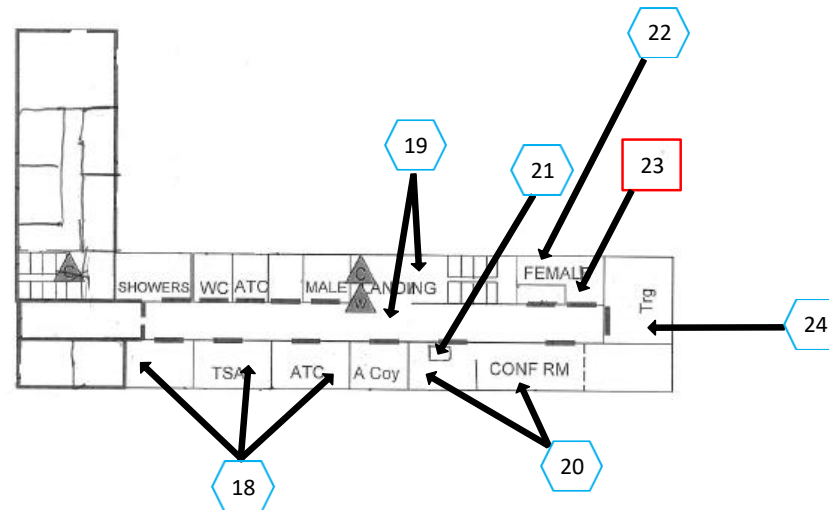
Authorised signatory

PRINT NAME: Raphael Mirzaian

Reg. No. 2378228 England. Registered Office: Envirochem, 12 The Gardens, Broadcut, Fareham, Hampshire, PO16 8SS.

Page 1 of 1

Document Name	Author	Issued by	Revision Number	Issue Date	Page No
2020	David Kelly	Armour AS	0	23/12/2020	36



Document Name	Author	Issued by	Revision Number	Issue Date	Page No
2020	David Kelly	Armour AS	0	23/12/2020	37



I the surveyor can confirm that this report is accurate to my findings onsite and this survey has been Content checked by myself.

Checked by: David Kelly

Date: 22/12/2020

I the Admin Manager can confirm that this report is accurate to the paperwork received and this survey has been quality checked by myself.

Checked by: Emma Humphreys

Date: 22.12.2020

Report Compiled By

Armour Analytical Services Ltd, Admirals Yard, Station Road, Bristol, BS34 6LR

Document Name	Author	Issued by	Revision Number	Issue Date	Page No
2020	David Kelly	Armour AS	0	23/12/2020	38