

Project Number A-00523 (3700)

**Re-Inspection
Asbestos Survey Report**

**6th Battalion the rifles D Company
Cornwall
TR1 1DF**



Working in Partnership with Shield Services Group



Document Name	Author	Issued by	Revision Number	Issue Date	Page No
2021	David Kelly	Armour AS	0	23/02/2021	1

Contents

Section	
1	Contact Details
2	Executive Summary
3	Site Description and Survey Information
4	Positive, Presumed or No Access Items
5	Negative Photos Sheets
6	Survey Objectives
7	Survey Notes
8	Material Assessment Algorithm
9	Certificates of Bulk Analysis
10	Site Plan

Document Name	Author	Issued by	Revision Number	Issue Date	Page No
2021	David Kelly	Armour AS	0	23/02/2021	2

Section 1: Contact Details

Client Details:		Instructing Party:	
Wessex RFCA Mount House Mount Street Taunton TA1 3QE		Shield Caxton Business Park Warmley BS30 8XJ	
Contact Name:	Kelvin Walker	Contact Name:	Chloe Smith
Tel: 01823 250116	Fax: N/A	Tel: 01173012650	Fax: N/A

Site Address:		Report Author:	
6th Battalion the rifles D Company Cornwall TR1 1DF		Armour Analytical Services Admirals Yard Station Road Bristol BS34 6LR	
Contact Name:	Kelvin Walker	Contact Name:	Emma Humphreys
Tel: 01823 250116	Fax: N/A	Mobile: 07468535836	

Lead Surveyor's Name:	Lead Surveyor's Authorising Signature:
David Kelly	

Document Name	Author	Issued by	Revision Number	Issue Date	Page No
2021	David Kelly	Armour AS	0	23/02/2021	3



Section 2: Executive Summary

Sample Number	Sample Type	Location	Analysis
DK/01	Floor Tiles and Adhesive - Vinyl Products	Ground Floor Flammable Store 005	N.A.D.I.S
DK/02	Red Flooring Under Carpet - Vinyl Products	Ground Floor ACTO Store 006	Chrysotile
DK/03	Floor Tiles and Adhesive - Vinyl Products	Ground Floor Equipment Store 007	Chrysotile
DK/04	Panels on Ceilings - Insulating Board	Ground Floor 730 Squadron Hut - Drill Hall and Classrooms 017	N.A.D.I.S

N.A.D.I.S – No Asbestos Detected in Sample

A.D – Asbestos Detected

Document Name	Author	Issued by	Revision Number	Issue Date	Page No
2021	David Kelly	Armour AS	0	23/02/2021	4



In addition to the above sampled items, the following items have been either been "Strongly Presumed" To Contain Asbestos or "Presumed" to Contain Asbestos as they were either visually identified in being so, labelled after previously being sampled on prior surveys or not accessible at the time of the survey:

Status	Sample Type	Location
Presumed	All - No Access Gained	Ground Floor Mattress Store 001
Strongly Presumed	Flue Pipes - Cement Product	Ground Floor Boiler Room 002
Presumed	All - No Access Gained	Ground Floor Armoury 012
Previously Sampled	Floor Tiles and Adhesive - Vinyl Products	Ground Floor Admin Office Lobby 014
Previously Sampled	Floor Tiles and Adhesive - Vinyl Products	First Floor PSAO Office 008
Previously Sampled	Floor Tiles and Adhesive - Vinyl Products	First Floor OC Office 009
Previously Sampled	Floor Tiles and Adhesive - Vinyl Products	First Floor RRT Office 010
Previously Sampled	Floor Tiles and Adhesive - Vinyl Products	First Floor SPSI Office 011
Previously Sampled	Floor Tiles and Adhesive - Vinyl Products	First Floor Corridor and Stairs 015
Presumed	Roof Tiles - Cement Product	External Caretakers House 016

The presence of asbestos in these areas cannot be ascertained at this time. If any works are to be carried out in these areas in the future, then these works should be approached cautiously.

In accordance with current legislation, any suspect materials encountered in these areas are to be assumed to contain asbestos until proven otherwise. This will normally involve cessation of works in the affected area.

Document Name	Author	Issued by	Revision Number	Issue Date	Page No
2021	David Kelly	Armour AS	0	23/02/2021	5

Section 3: Site Description and Survey Information

Brief description on the general building construction

1960's concrete MOD building with flat roofs surrounding a central drill hall with a modernized pitched metal roof.

Caveat for no access areas

No access within the mattress store and armory as there was no one on site with keys or authorization.

EXTERNAL MATERIALS

Roof Type	Flat, Pitched
Roof Materials	Metal, Concrete, Cement Tiles
Soffits	Metal
Fascia	Metal
Walls	Concrete, Brick, Timber
Verge Under cloaking	None
Guttering	Metal, Plastic
Downpipes	Metal, Plastic
Window/Door frames	Metal
Other Materials	N/A

INTERNAL MATERIALS

Loft Insulation	Fiberglass
Roof Underlining	Modern Felt
Ceilings	Concrete, Plasterboard
Walls <i>Internal</i>	Brick, Block, Plasterboard
Floors	Tiles, Carpet, Concrete
Doors/Frames	Timber
Pipework/Insulation	Modern
Boxings	Timber
Boiler Make	Modern
Flue Pipes	Plastic, Metal, Cement
Storage Heaters	None
Electrical Boxes/Machinery	Modern
Ducting/Risers	None
Stairs	Timber
Lift Shafts	None
Other Materials	N/A

Document Name	Author	Issued by	Revision Number	Issue Date	Page No
2021	David Kelly	Armour AS	0	23/02/2021	6

Section 4: Positive, Presumed or No Access Items

Item No:	1	Sample No:	N/A
Location:	Ground Floor - Mattress Store 001		



Material Description:	All - No Access Gained	
Identification:	Presumed to Contain Asbestos	
Approx. quantity:	1 no	
Accessibility	Difficult	Assessment Score
Product type:	Pipe Insulation	3
Extent of Damage:	Major damage	3
Surface Treatment:	Unsealed Insulation	3
Asbestos type:	Amosite, Chrysotile, Crocidolite	3
Material Assessment Score:		12
Priority Assessment Score:		High
Action:	Further Investigation Needed	
Comments:	Locked. No one on site has access to room	

Document Name	Author	Issued by	Revision Number	Issue Date	Page No
2021	David Kelly	Armour AS	0	23/02/2021	7

Item No: 2 **Sample No:** N/A

Location: Ground Floor - Boiler Room 002



Material Description:	Flue Pipes - Cement Product	
Identification:	Strongly Presumed to Contain Asbestos	
Approx. quantity:	3 no	
Accessibility	Difficult	<i>Assessment Score</i>
Product type:	Cement	1
Extent of Damage:	Slight / minor damage	1
Surface Treatment:	Unsealed Cement	1
Asbestos type:	Chrysotile	1
Material Assessment Score:		4
Priority Assessment Score:		Negligible
Action:	Manage	
Comments:	Located to the ceiling	

Document Name	Author	Issued by	Revision Number	Issue Date	Page No
2021	David Kelly	Armour AS	0	23/02/2021	8

Item No: 6 **Sample No:** DK/02

Location: Ground Floor - ACTO Store 006



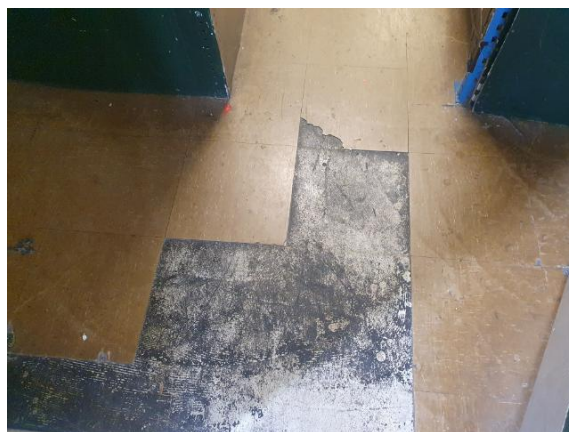
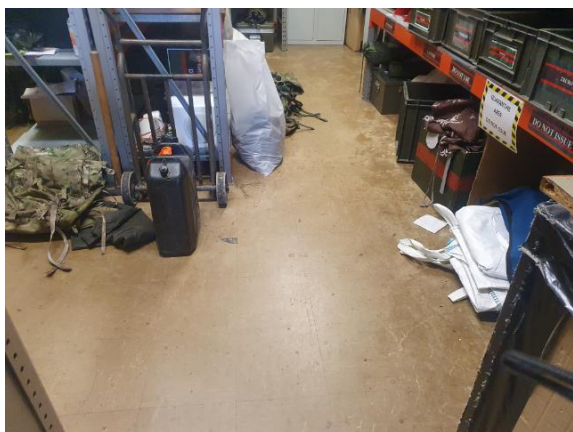
Material Description:	Red Flooring under Carpet - Vinyl Products	
Identification:	Sampled - Asbestos Detected	
Approx. quantity:	12 m ²	
Accessibility	Difficult	Assessment Score
Product type:	Vinyl	1
Extent of Damage:	Slight / minor damage	1
Surface Treatment:	Non-friable	0
Asbestos type:	Chrysotile	1
Material Assessment Score:		3
Priority Assessment Score:		Negligible
Action:	Manage	
Comments:	N/A	

Document Name	Author	Issued by	Revision Number	Issue Date	Page No
2021	David Kelly	Armour AS	0	23/02/2021	9

Item No: 7

Sample No: DK/03

Location: Ground Floor - Equipment Store 007

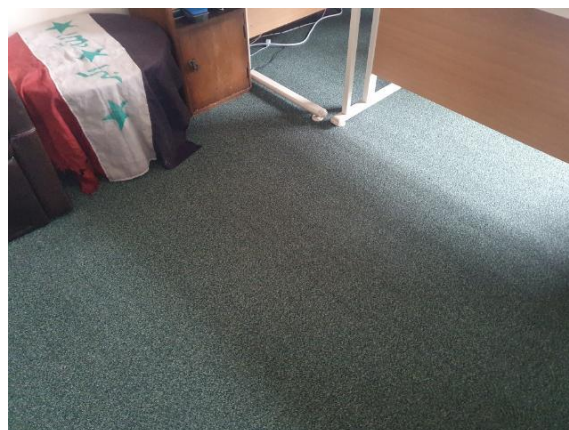


Material Description:	Floor Tiles and Adhesive - Vinyl Products	
Identification:	Sampled - Asbestos Detected	
Approx. quantity:	40 m ²	
Accessibility	Easy	<i>Assessment Score</i>
Product type:	Vinyl	1
Extent of Damage:	Moderate damage	2
Surface Treatment:	Non-friable	0
Asbestos type:	Chrysotile	1
Material Assessment Score:		4
Priority Assessment Score:		Negligible
Action:	Manage	
Comments:	N/A	

Document Name	Author	Issued by	Revision Number	Issue Date	Page No
2021	David Kelly	Armour AS	0	23/02/2021	10

Item No: 8 **Sample No:** N/A

Location: First Floor - PSAO Office 008

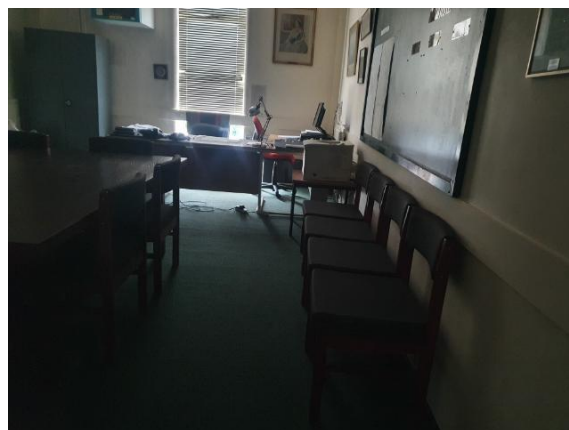


Material Description:	Floor Tiles and Adhesive - Vinyl Products	
Identification:	Previously Sampled - Asbestos Detected	
Approx. quantity:	16 m ²	
Accessibility	Difficult	<i>Assessment Score</i>
Product type:	Vinyl	1
Extent of Damage:	Major damage	3
Surface Treatment:	Non-friable	0
Asbestos type:	Chrysotile	1
Material Assessment Score:		5
Priority Assessment Score:		Low
Action:	Manage	
Comments:	Previously sampled ref: Armour 28/1/20 Sample GR003. Now under carpet	

Document Name	Author	Issued by	Revision Number	Issue Date	Page No
2021	David Kelly	Armour AS	0	23/02/2021	11

Item No: 9 **Sample No:** N/A

Location: First Floor - OC Office 009



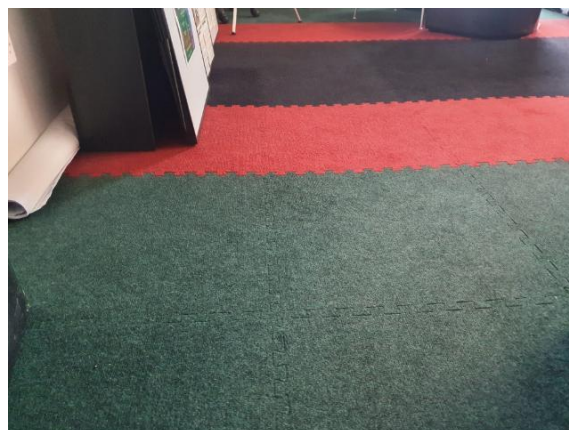
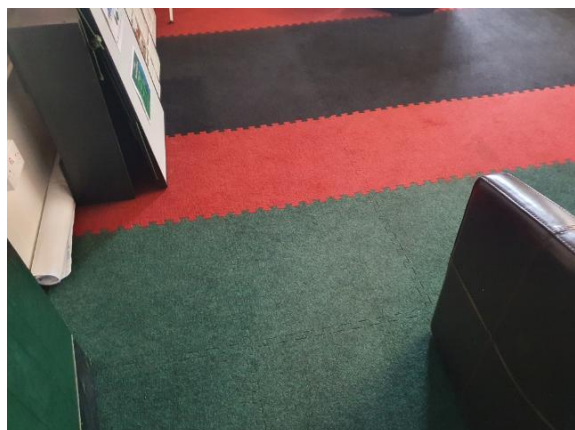
Material Description:	Floor Tiles and Adhesive - Vinyl Products	
Identification:	Previously Sampled - Asbestos Detected	
Approx. quantity:	20 m ²	
Accessibility	Difficult	Assessment Score
Product type:	Vinyl	1
Extent of Damage:	Moderate damage	2
Surface Treatment:	Non-friable	0
Asbestos type:	Chrysotile	1
Material Assessment Score:		4
Priority Assessment Score:		Negligible
Action:	Manage	
Comments:	Previously sampled ref: Armour 28/1/20 Sample GR003. Now under carpet	

Document Name	Author	Issued by	Revision Number	Issue Date	Page No
2021	David Kelly	Armour AS	0	23/02/2021	12

Item No: 10

Sample No: N/A

Location: First Floor - RRT Office 010



Material Description:	Floor Tiles and Adhesive - Vinyl Products	
Identification:	Previously Sampled - Asbestos Detected	
Approx. quantity:	12 m ²	
Accessibility	Difficult	<i>Assessment Score</i>
Product type:	Vinyl	1
Extent of Damage:	Moderate damage	2
Surface Treatment:	Non-friable	0
Asbestos type:	Chrysotile	1
Material Assessment Score:		4
Priority Assessment Score:		Negligible
Action:	Manage	
Comments:	Previously sampled ref: Armour 28/1/20 Sample GR003. Now under carpet	

Document Name	Author	Issued by	Revision Number	Issue Date	Page No
2021	David Kelly	Armour AS	0	23/02/2021	13

Item No: 11

Sample No: N/A

Location: First Floor - SPSI Office 011



Material Description:	Floor Tiles and Adhesive - Vinyl Products	
Identification:	Previously Sampled - Asbestos Detected	
Approx. quantity:	12 m ²	
Accessibility	Difficult	<i>Assessment Score</i>
Product type:	Vinyl	1
Extent of Damage:	Moderate damage	2
Surface Treatment:	Non-friable	0
Asbestos type:	Chrysotile	1
Material Assessment Score:		4
Priority Assessment Score:		Negligible
Action:	Manage	
Comments:	Previously sampled ref: Armour 28/1/20 Sample GR003. Now under carpet	

Document Name	Author	Issued by	Revision Number	Issue Date	Page No
2021	David Kelly	Armour AS	0	23/02/2021	14

Item No: 12 **Sample No:** N/A

Location: Ground Floor - Armoury 012



Material Description:	All - No Access Gained	
Identification:	Presumed to Contain Asbestos	
Approx. quantity:	1 no	
Accessibility	Difficult	<i>Assessment Score</i>
Product type:	Pipe Insulation	3
Extent of Damage:	Major damage	3
Surface Treatment:	Unsealed Insulation	3
Asbestos type:	Amosite, Chrysotile, Crocidolite	3
Material Assessment Score:		12
Priority Assessment Score:		High
Action:	Further Investigation Needed	
Comments:	Locked. No one on site has access or authorisation to access room.	

Document Name	Author	Issued by	Revision Number	Issue Date	Page No
2021	David Kelly	Armour AS	0	23/02/2021	15

Item No: 13

Sample No: N/A

Location: Ground Floor - MSA Store 013



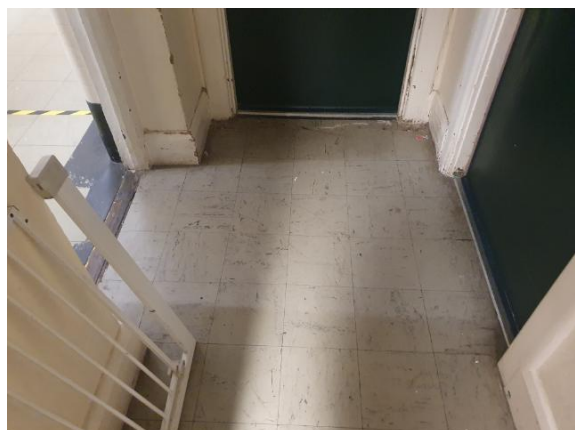
Material Description:	Floor Tiles and Adhesive - Vinyl Products	
Identification:	As Per Sample S003 - Asbestos Detected	
Approx. quantity:	20 m ²	
Accessibility	Easy	<i>Assessment Score</i>
Product type:	Vinyl	1
Extent of Damage:	Slight / minor damage	1
Surface Treatment:	Non-friable	0
Asbestos type:	Chrysotile	1
Material Assessment Score:		3
Priority Assessment Score:		Negligible
Action:	Manage	
Comments:	N/A	

Document Name	Author	Issued by	Revision Number	Issue Date	Page No
2021	David Kelly	Armour AS	0	23/02/2021	16

Item No: 14

Sample No: N/A

Location: Ground Floor - Admin Office Lobby 014



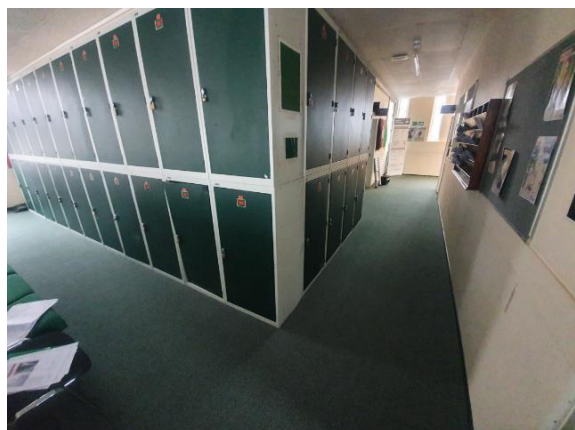
Material Description:	Floor Tiles and Adhesive - Vinyl Products	
Identification:	Previously Sampled - Asbestos Detected	
Approx. quantity:	2 m ²	
Accessibility	Easy	<i>Assessment Score</i>
Product type:	Vinyl	1
Extent of Damage:	Major damage	3
Surface Treatment:	Non-friable	0
Asbestos type:	Chrysotile	1
Material Assessment Score:		5
Priority Assessment Score:		Low
Action:	Remove	
Comments:	Previously sampled ref: Armour 28/1/20 Sample GR004. Several loose pieces of floor tile. Remove loose pieces and manage the rest of tiles	

Document Name	Author	Issued by	Revision Number	Issue Date	Page No
2021	David Kelly	Armour AS	0	23/02/2021	17

Item No: 15

Sample No: N/A

Location: First Floor - Corridor and Stairs 015



Material Description:	Floor Tiles and Adhesive - Vinyl Products	
Identification:	Previously Sampled - Asbestos Detected	
Approx. quantity:	30 m ²	
Accessibility	Difficult	<i>Assessment Score</i>
Product type:	Vinyl	1
Extent of Damage:	Major damage	3
Surface Treatment:	Non-friable	0
Asbestos type:	Chrysotile	1
Material Assessment Score:		5
Priority Assessment Score:		Low
Action:	Manage	
Comments:	Previously sampled ref: Armour 28/1/20 Sample GR003. Now under carpet	

Document Name	Author	Issued by	Revision Number	Issue Date	Page No
2021	David Kelly	Armour AS	0	23/02/2021	18

Item No: 16

Sample No: N/A

Location: External - Caretakers House 016



Material Description:	Roof Tiles - Cement Product	
Identification:	Presumed to Contain Asbestos	
Approx. quantity:	60 m ²	
Accessibility	Difficult	<i>Assessment Score</i>
Product type:	Cement	1
Extent of Damage:	Major damage	3
Surface Treatment:	Unsealed Insulation	3
Asbestos type:	Chrysotile	1
Material Assessment Score:		8
Priority Assessment Score:		Medium
Action:	Manage	
Comments:	N/A	

Document Name	Author	Issued by	Revision Number	Issue Date	Page No
2021	David Kelly	Armour AS	0	23/02/2021	19

Section 5: Negative Items

Item No:	3	Sample No:	N/A
Location:	Ground Floor - Electrical Cupboard 003		



Material Description:	No Suspect Materials Found	
Identification:	N/A	
Approx. quantity:	N/A	
Accessibility	N/A	<i>Assessment Score</i>
Product type:	N/A	N/A
Extent of Damage:	N/A	N/A
Surface Treatment:	N/A	N/A
Asbestos type:	N/A	N/A
Material Assessment Score:		N/A
Priority Assessment Score:		N/A
Action:	N/A	
Comments:	Previously a no access area. Now accessed and no asbestos found. Non asbestos floor tiles and modern electrics	

Document Name	Author	Issued by	Revision Number	Issue Date	Page No
2021	David Kelly	Armour AS	0	23/02/2021	20

Item No: 4

Sample No: N/A

Location: Ground Floor - Signal Store 004



Material Description:	No Suspect Materials Found	
Identification:	N/A	
Approx. quantity:	N/A	
Accessibility	N/A	<i>Assessment Score</i>
Product type:	N/A	N/A
Extent of Damage:	N/A	N/A
Surface Treatment:	N/A	N/A
Asbestos type:	N/A	N/A
Material Assessment Score:		N/A
Priority Assessment Score:		N/A
Action:	N/A	
Comments:	Previously a no access area. Now accessed and no asbestos found	

Document Name	Author	Issued by	Revision Number	Issue Date	Page No
2021	David Kelly	Armour AS	0	23/02/2021	21

Item No: 5

Sample No: DK/01

Location: Ground Floor - Flammable Store 005



Material Description:	Floor Tiles and Adhesive - Vinyl Products	
Identification:	Sampled - No Asbestos Found	
Approx. quantity:	N/A	
Accessibility	N/A	Assessment Score
Product type:	N/A	N/A
Extent of Damage:	N/A	N/A
Surface Treatment:	N/A	N/A
Asbestos type:	N/A	N/A
Material Assessment Score:		N/A
Priority Assessment Score:		N/A
Action:	N/A	
Comments:	N/A	

Document Name	Author	Issued by	Revision Number	Issue Date	Page No
2021	David Kelly	Armour AS	0	23/02/2021	22

Item No: 17

Sample No: DK/04

Location: Ground Floor - 730 Squadron Hut - Drill Hall and Classrooms 017



Material Description:	Panels on Ceilings - Insulating Board	
Identification:	Sampled - No Asbestos Found	
Approx. quantity:	N/A	
Accessibility	N/A	Assessment Score
Product type:	N/A	N/A
Extent of Damage:	N/A	N/A
Surface Treatment:	N/A	N/A
Asbestos type:	N/A	N/A
Material Assessment Score:		N/A
Priority Assessment Score:		N/A
Action:	N/A	
Comments:	Panels are non-asbestos Supalux but have been sampled as there are asbestos stickers on the panels. 8no panels	

Document Name	Author	Issued by	Revision Number	Issue Date	Page No
2021	David Kelly	Armour AS	0	23/02/2021	23

Item No: 18

Sample No: N/A

Location: Ground Floor - 730 Squadron Hut - WC's, Cupboard and Kitchen 018



Material Description:	No Suspect Materials Found	
Identification:	N/A	
Approx. quantity:	N/A	
Accessibility	N/A	<i>Assessment Score</i>
Product type:	N/A	N/A
Extent of Damage:	N/A	N/A
Surface Treatment:	N/A	N/A
Asbestos type:	N/A	N/A
Material Assessment Score:		N/A
Priority Assessment Score:		N/A
Action:	N/A	
Comments:	Previously a no access area. Now accessed and no asbestos found. Modern sink pad in kitchen	

Document Name	Author	Issued by	Revision Number	Issue Date	Page No
2021	David Kelly	Armour AS	0	23/02/2021	24

Item No:	19	Sample No:	N/A
Location:	Ground Floor - 730 Squadron Hut - Offices and Store 019		



Material Description:	Panels on Ceilings - Insulating Board	
Identification:	As per sample S004 - No Asbestos Found	
Approx. quantity:	N/A	
Accessibility	N/A	<i>Assessment Score</i>
Product type:	N/A	N/A
Extent of Damage:	N/A	N/A
Surface Treatment:	N/A	N/A
Asbestos type:	N/A	N/A
Material Assessment Score:		N/A
Priority Assessment Score:		N/A
Action:	N/A	
Comments:	Panels are non-asbestos Supalux but have been sampled as there are asbestos stickers on the panels. 2no panels	

Document Name	Author	Issued by	Revision Number	Issue Date	Page No
2021	David Kelly	Armour AS	0	23/02/2021	25

Item No:	20	Sample No:	N/A
Location:	Ground Floor - Modelling Hut - Classroom 3 020		



Material Description:	No Suspect Materials Found	
Identification:	N/A	
Approx. quantity:	N/A	
Accessibility	N/A	<i>Assessment Score</i>
Product type:	N/A	N/A
Extent of Damage:	N/A	N/A
Surface Treatment:	N/A	N/A
Asbestos type:	N/A	N/A
Material Assessment Score:		N/A
Priority Assessment Score:		N/A
Action:	N/A	
Comments:	Previously a no access area. Now accessed and no asbestos found	

Document Name	Author	Issued by	Revision Number	Issue Date	Page No
2021	David Kelly	Armour AS	0	23/02/2021	26



Section 6: Survey Objectives

Instructions were received from Kelvin Walker of Wessex RFCA to carry out a Re-Inspection asbestos survey at 6th Battalion the rifles D Company, Cornwall, TR1 1DF in accordance with HSG264 and Armour Analytical's quality procedures.

The survey was carried out on 15 February 2021 by David Kelly with the objective of facilitating a Re-Inspection report.

Document Name	Author	Issued by	Revision Number	Issue Date	Page No
2021	David Kelly	Armour AS	0	23/02/2021	27



Section 7: Survey Notes

This report has been written with reference to the various Guidance Notes etc, issued, and current at the date of this report and describes circumstances at the site on the date the investigation took place.

Where similar items exist in the building, only one or two samples may have been taken to ascertain the material content. It was assumed that similar products were of the same material.

Any person undertaking work within the buildings should be told of the presence of asbestos. This briefing also applies to any other person associated with the site, including staff, sub-contractors and others.

The drawings in the report are not to scale and are illustrative only to indicate approximate locations. The descriptions used are for location identification purposes.

All the recommendations described in this report are based upon assumptions made after consideration of the type of material, condition of the material, its location, analysis result and type of use the area is thought to be subjected to. However, statutory authorities or others could require amendments based on local knowledge, change in legislation, change in use or indeed other conditions or criteria.

Samples taken from floor tiles (or similar material) may include a bitumen adhesive as part of the sample. It is known that some proprietary brands of bitumen have an asbestos content and this will be included as an integral part of the bulk sample unless otherwise stated.

Due to the artex being non-homogenous, it is recommended to treat all areas as containing asbestos if you have a positive sample of artex.

Document Name	Author	Issued by	Revision Number	Issue Date	Page No
2021	David Kelly	Armour AS	0	23/02/2021	28

Section 8: Material Assessment Algorithm

Variable	Score	Examples
Product type	1	Vinyl, 'Bakelite', Cement, Textured Coating, Non-Friable Debris, Floor Tiles, Bitumen, Reinforced Plastics, Mastic (putty), Windowsills
	2	Asbestos Insulating Board, Paper, Rope, Burned Cement Debris, Flashguards, Gaskets
	3	Pipe Insulation, Spray Coating, Friable Debris, Loose Fill Asbestos
Condition / Damage	0	Good
	1	Slight / Minor Damage
	2	Moderate Damage – Breakage to Surface Treatment
	3	Major Damage – Smashed or Exposed Material
Surface Treatment	0	Non-Friable E.G. Vinyl
	1	Enclosed Insulation, Encapsulated AIB, Unsealed Cement, Woven Material, Paper
	2	Unsealed AIB, Encapsulated Insulation, Encapsulated Pipe Lagging
	3	Unsealed Insulation, Spray Coating, Unsealed Pipe Lagging
Asbestos Type	1	Chrysotile
	2	Amosite and Other Amphiboles
	3	Crocidolite

The scores from each of the four sections are added together to produce a risk score:

Risk score	Risk assessment
10 or more	High risk
7 – 9	Medium risk
5 – 6	Low risk
4 and below	Negligible risk

Section 9: Certificates of Bulk Analysis



Our Ref: J203335 FI: 4
Your Ref: 3700
Date: 19/02/2021

ENVIROCHEM
Analytical Laboratories Ltd.
12 The Gardens
Broadcut, Fareham
Hampshire
PO16 8SS



1227
Tel: (01329) 287777
Fax: (01329) 287755
www.envirochem.co.uk
office@envirochem.co.uk

Asbestos Fibre Identification Report

Client: Armour Analytical Services Ltd
Admirals Yard, Station Road, Patchway, Bristol, BS34 6LR
Site Address: 6th Battalion the Rifles, The T A Centre, Moresk Road, Truro, Cornwall, TR1 1DF
Sampled By: Armour Analytical Services Ltd
Date sampled/received: 18th February 2021
Date analysed: 19th February 2021
Analyst/s: Chloe Bowman
Analysis Location: 12 The Gardens, Broadcut, Fareham, Hampshire, PO16 8SS

ANALYTICAL PROCEDURE

Fibre identification was carried out in accordance with the documented 'in-house' method (2.01) based on the HSE Guidance Note HSG 248. These employed stereo microscopy, polarized microscopy and dispersion staining techniques.

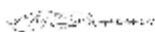
RESULTS

Sample No.	Sample Ref.	Location	Asbestos Detected	Asbestos Type
DK/01	BS656828	Flammable Store – Floor Tiles and Adhesive	No	
DK/02	BS656829	ACTO Store – Red Flooring under Carpet	Yes	Chrysotile
DK/03	BS656830	Equipment Store – Floor Tiles and Adhesive	Yes	Chrysotile
DK/04	BS656831	73 Squadron Hut – Ceiling Panels	No	

NOTES:

1. Sample(s) were examined for the presence of 6 types of asbestos fibres: crocidolite (blue), amosite (brown), chrysotile (white), anthophyllite, actinolite and tremolite.
2. The results shown in this report specifically refer to the sample(s) tested as received unless otherwise stated and samples collected by the client are evaluated using information provided by the client. For samples collected by the client the date of receipt is deemed to be the same as the date sampled.
3. Envirochem is a UKAS accredited laboratory for sampling and identification of asbestos containing materials.
4. Comments, observations and opinions are outside the scope of UKAS accreditation.
5. The analytical method in the HSG248 does not quantify the amount of asbestos present, therefore UKAS accreditation does not permit quantification.
6. If, during fibre identification, only 1 or 2 fibres are seen and identified as asbestos, then the term 'trace asbestos identified' is used.
7. This report shall not be reproduced except in full, without written approval of Envirochem.

SIGNATURE:



Authorised signatory

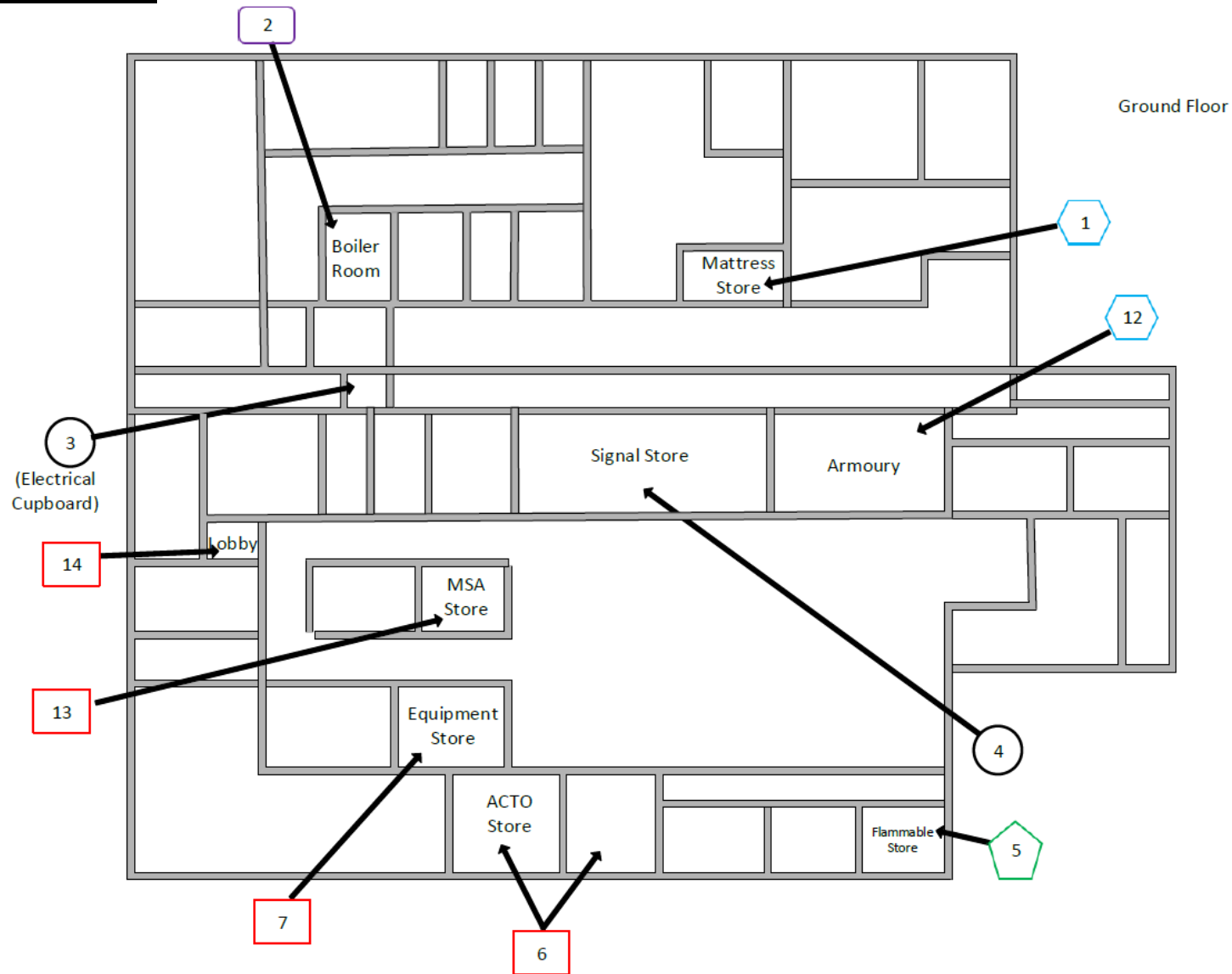
PRINT NAME: Chloe Bowman







Reg. No. 2378228 England. Registered Office: Envirochem, 12 The Gardens, Broadcut, Fareham, Hampshire, PO16 8SS.

Page 1 of 1

Document Name	Author	Issued by	Revision Number	Issue Date	Page No
2021	David Kelly	Armour AS	0	23/02/2021	30

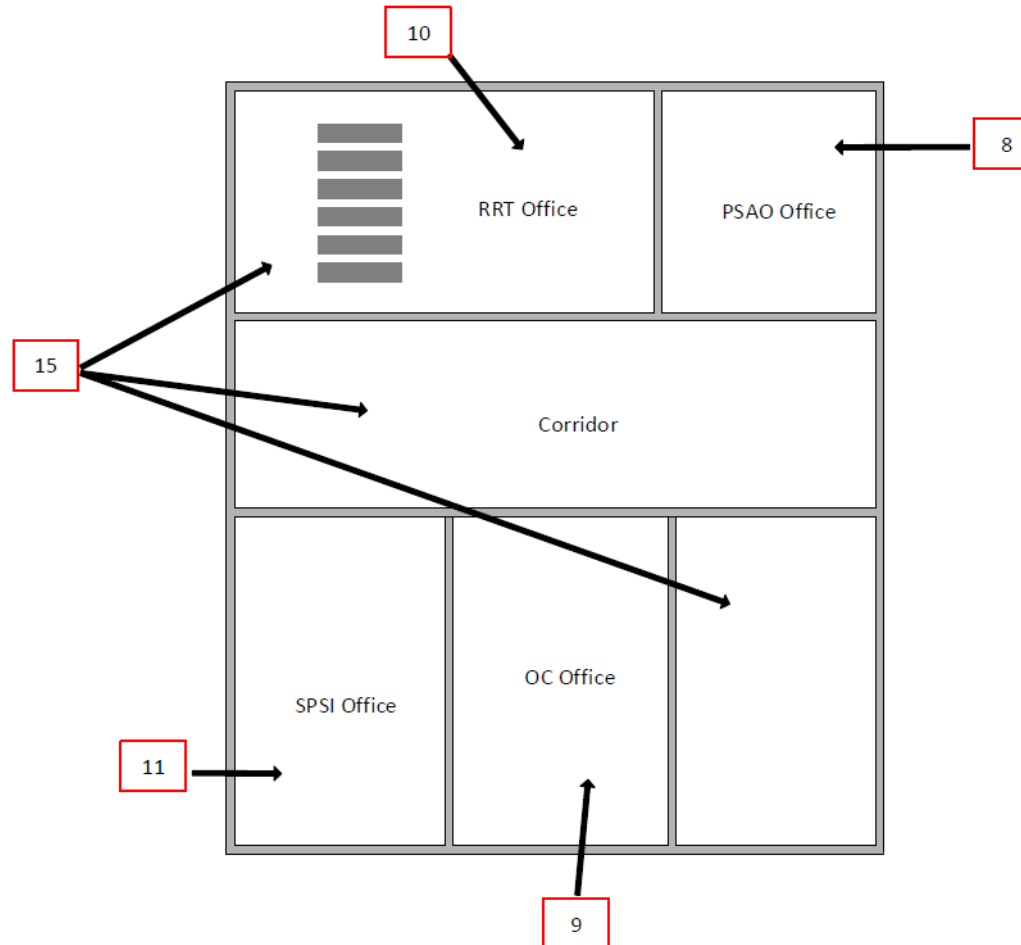
Section 10: Site Plan









Key	
	Visual Inspection
	Asbestos Detected (Positive Item)
	No Asbestos Detected (Negative Item)
	Presumed to Contain Asbestos
	Strongly Presumed to Contain Asbestos
	No Access

Document Name	Author	Issued by	Revision Number	Issue Date	Page No
2021	David Kelly	Armour AS	0	23/02/2021	31

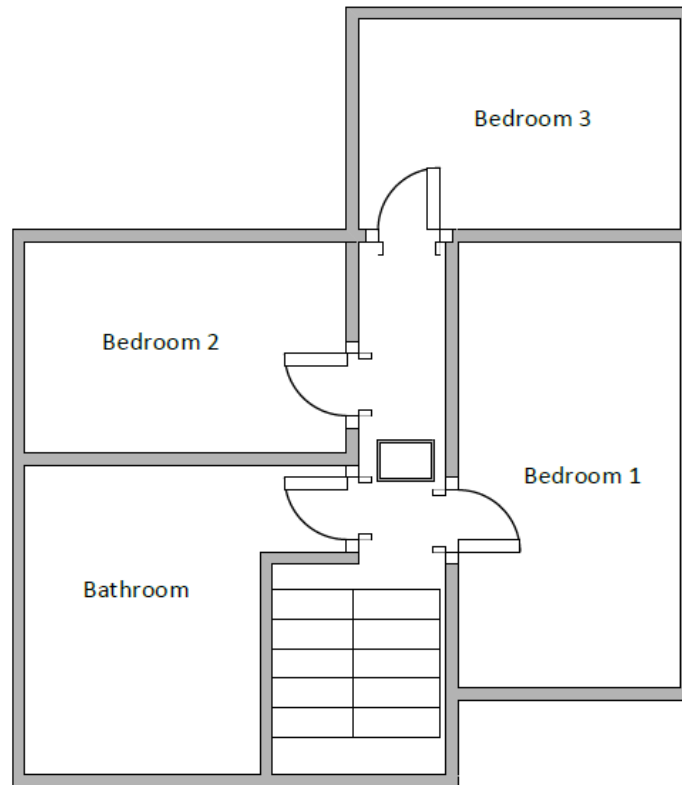
First Floor



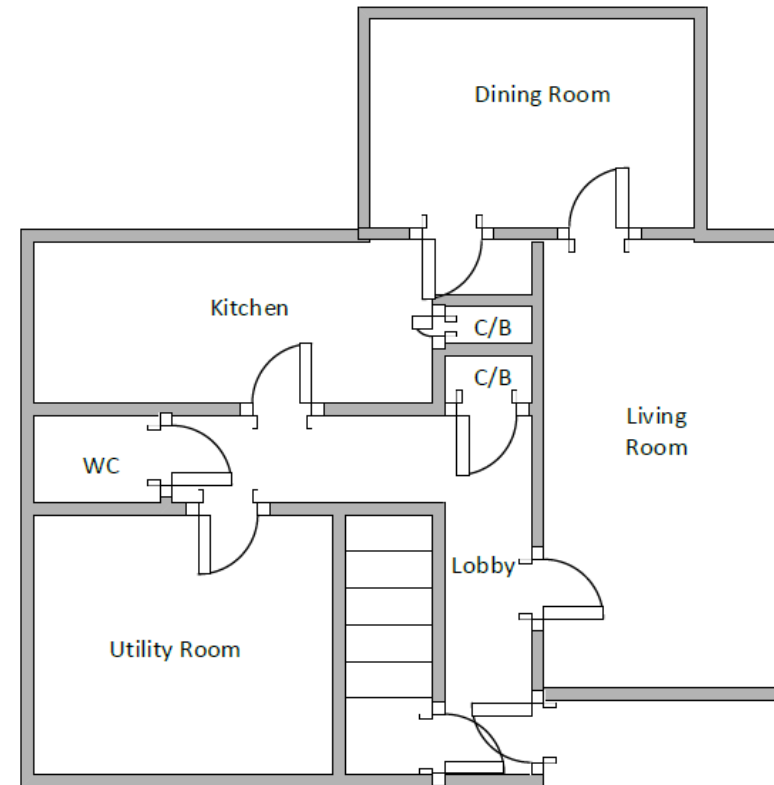
Key	
	Visual Inspection
	Asbestos Detected (Positive Item)
	No Asbestos Detected (Negative Item)
	Presumed to Contain Asbestos
	Strongly Presumed to Contain Asbestos
	No Access







Document Name	Author	Issued by	Revision Number	Issue Date	Page No
2021	David Kelly	Armour AS	0	23/02/2021	32

Caretakers House – First Floor

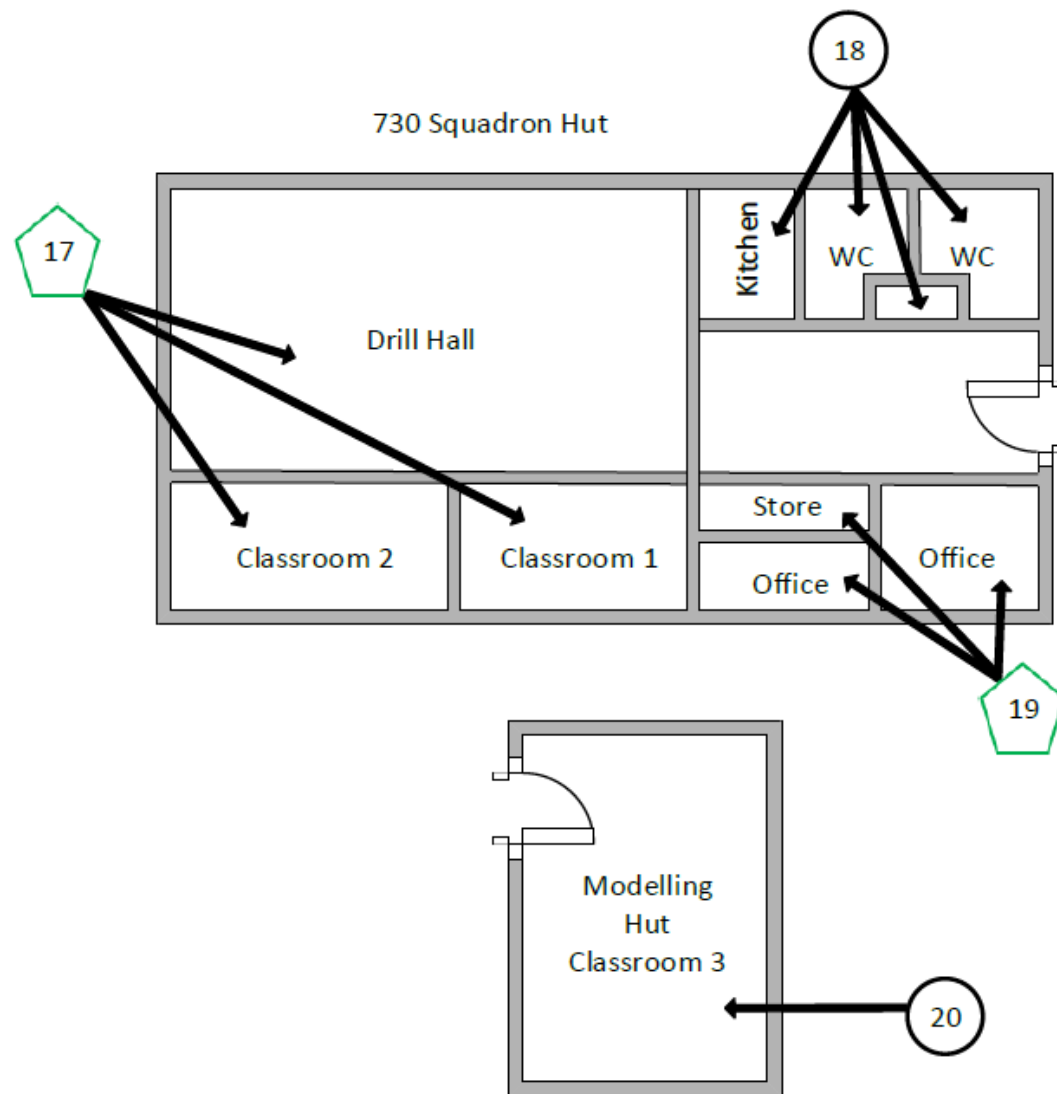








Caretakers House – Ground Floor



Key	
	Visual Inspection
	Asbestos Detected (Positive Item)
	No Asbestos Detected (Negative Item)
	Presumed to Contain Asbestos
	Strongly Presumed to Contain Asbestos
	No Access

Document Name	Author	Issued by	Revision Number	Issue Date	Page No
2021	David Kelly	Armour AS	0	23/02/2021	33



Key	
	Visual Inspection
	Asbestos Detected (Positive Item)
	No Asbestos Detected (Negative Item)
	Presumed to Contain Asbestos
	Strongly Presumed to Contain Asbestos
	No Access

Document Name	Author	Issued by	Revision Number	Issue Date	Page No
2021	David Kelly	Armour AS	0	23/02/2021	34



I the surveyor can confirm that this report is accurate to my findings onsite and this survey has been Content checked by myself.

Checked by: Will Fyles

Date: 22.02.2021

I the Admin Manager can confirm that this report is accurate to the paperwork received and this survey has been quality checked by myself.

Checked by: Emma Humphreys

Date: 22.02.2021

Report Compiled By

Armour Analytical Services Ltd, Admirals Yard, Station Road, Bristol, BS34 6LR

Document Name	Author	Issued by	Revision Number	Issue Date	Page No
2021	David Kelly	Armour AS	0	23/02/2021	35