



**ARMOUR**  
ANALYTICAL SERVICES

**Project Number 2481**

**Management  
Asbestos Survey Report**

**675 Army Air Corps, Somerset, TA1 5LJ**



*Working in Partnership with Shield Environmental Services*



Document Name	Author	Issued by	Revision Number	Issue Date	Page No
2019	Emma Humphreys	Armour AS	0	18/06/2019	1

## Contents

<b>Section</b>	
<b>1</b>	<b>Contacts &amp; Authorisation</b>
<b>2</b>	<b>Executive Summary</b>
<b>3</b>	<b>Site Description &amp; Survey Information</b>
<b>4</b>	<b>Positive and Presumed Photos Sheets</b>
<b>5</b>	<b>Negative Photos Sheets</b>
<b>6</b>	<b>Survey Objectives</b>
<b>7</b>	<b>Survey Techniques</b>
<b>8</b>	<b>Survey Caveat</b>
<b>9</b>	<b>Survey Notes</b>
<b>10</b>	<b>Material Assessment Algorithm</b>
<b>11</b>	<b>Certificates of Bulk Analysis</b>
<b>12</b>	<b>Site Plan</b>

Document Name	Author	Issued by	Revision Number	Issue Date	Page No
2019	Emma Humphreys	Armour AS	0	18/06/2019	2



## **Section 1: Contact Details**

<b>Client Details:</b>		<b>Instructing Party:</b>	
Wessex RFCA Mount House Mount Street Taunton TA1 3QE		Shield Environmental Shield House Caxton Business Park Crown Way Bristol BS30 8XJ	
<b>Contact Name:</b>	Sue Morrell	<b>Contact Name:</b>	Chloe Smith
<b>Tel:</b> 01823250115	<b>Fax:</b> N/A	<b>Tel:</b> 01173012650	<b>Fax:</b> N/A

<b>Site Address:</b>		<b>Report Author:</b>	
675 Army Air Corps Somerset TA1 5LJ		Armour Analytical Services Admirals Yard Station Road Bristol BS34 6LR	
<b>Contact Name:</b>	Sue Morrell	<b>Contact Name:</b>	David Kelly
<b>Tel:</b> 01823250115	<b>Fax:</b> N/A	<b>Mobile:</b> 07769707519	

<b>Lead Surveyor's Name:</b>	<b>Lead Surveyor's Authorising Signature:</b>
D. Kelly	

Document Name	Author	Issued by	Revision Number	Issue Date	Page No
2019	Emma Humphreys	Armour AS	0	18/06/2019	3

## **Section 2: Executive Summary**

Sample Number	Sample Type	Location	Analysis
DK/01	Panel to top of fireplace	Officers Lounge – First Floor	Chrysotile
DK/02	Floor tiles under carpet	Officers Lounge – First Floor	Chrysotile
DK/03	Textured coating to canopy	Conference Room – First Floor	N.A.D.I.S
DK/04	Floor tiles under carpet	Conference Room – First Floor	Chrysotile
DK/05	Sink pad	Kitchen – First Floor	N.A.D.I.S
DK/06	Floor tiles and adhesive	Harding Room – First Floor	Chrysotile
DK/07	Insulation board infill panel to door	Corridor – First Floor	Chrysotile/Amosite
DK/08	Toilet cisterns	WC, Store and Changing Room – Ground Floor	Amosite
DK/09	Cement pipework sleeve within wall	WC – Ground Floor	Chrysotile
DK/10	Floor tiles and adhesive	Offices x 2– Ground Floor	Chrysotile
DK/11	Floor tiles and adhesive	Main Hall and Gym (Storage)	Chrysotile
DK/12	Cement downpipes	External	Chrysotile
DK/13	Cement wall panel	Bedroom 2 and cupboard	Chrysotile
DK/14	Floor tiles and adhesive	Bedroom 2 and cupboard	Chrysotile
DK/15	Sink pads	Servery – First floor	N.A.D.I.S
DK/16	Insulation board ceiling	Garages – Office R13	N.A.D.I.S
DK/17	Insulation board bulkhead panels	Garages – MT Store	N.A.D.I.S
DK/18	Remains of sink pad	Cadet Hut – Kitchen	N.A.D.I.S
DK/19	Profiled cement roof sheets	External to garages	Chrysotile

N.A.D.I.S – No Asbestos Detected in Sample

A.D – Asbestos Detected

Document Name	Author	Issued by	Revision Number	Issue Date	Page No
2019	Emma Humphreys	Armour AS	0	18/06/2019	4

The following items have been Presumed to be Asbestos Containing Materials as they were not accessible at the time of the survey:

- Item 4 – WC's x 2 - Toilet Seats - Unable to sample as would damage integrity of seat
- Item 11 – Loft Space – Insulation board panel to door – Unable to sample due to height
- Item 16 – CEO Office – Safe – No access within safe casings
- Item 18 – WC - Toilet Seats - Unable to sample as would damage integrity of seat
- Item 19 – Landing and Corridor – Components within electrical boxes - Unable to sample as live
- Item 23 – Changing Room - Toilet Seats - Unable to sample as would damage integrity of seat
- Item 26 – Office – Safe - No access within safe casings
- Item 29 – Admin Office and staff Instruction Office – Safe – No access within safe casings
- Item 47 – External to garages – Cement Roof edging – Unable to sample due to height
- Item 57 – Office 22 – First Floor – No access as room locked and no key available
- Item 63 – Store R14 – No access - No access as room locked and no key available
- Item 65 – Ammunition Store – Panels above cage – Unable to sample as panels above cage

The presence of asbestos in these areas cannot be ascertained at this time. If any works are to be carried out in these areas in the future, then these works should be approached cautiously.

In accordance with current legislation, any suspect materials encountered in these areas are to be assumed to contain asbestos until proven otherwise. This will normally involve cessation of works in the affected area.

Document Name	Author	Issued by	Revision Number	Issue Date	Page No
2019	Emma Humphreys	Armour AS	0	18/06/2019	5



## **Section 3: Site Description & Survey Information**

### **Brief description on the general building construction**

Brick and Block construction with a pitched tiled roof.

### **Caveat for no access areas**

No access within live electrics.

No access to inspect high level roof areas.

Unable to access two rooms as the keys were not available.

### **EXTERNAL MATERIALS**

Roof Type	Pitched
Roof Materials	Ceramic Tiles, Profiled Cement
Soffits	UPVC, Insulation Board presumed above UPVC
Fascia	Timber
Walls	Brick
Verge Under cloaking	N/A
Guttering	Plastic, Cement
Downpipes	Plastic, Metal, Cement
Window/Door frames	Metal
Other Materials	N/A

### **INTERNAL MATERIALS**

Loft Insulation	Fiberglass
Roof Underlining	N/A
Ceilings	Plasterboard, Concrete
Walls <i>Internal</i>	Plasterboard, Brick
Floors	Tiles, Carpet, Lino, Screed
Doors/Frames	Timber
Pipework/Insulation	MMMF
Boxings	Timber, Plasterboard
Boiler Make	Modern Hoval
Flue Pipes	Metal
Storage Heaters	Radiators
Electrical Boxes/Machinery	No access within boxes
Ducting/Risers	Metal
Stairs	Screed
Lift Shafts	N/A
Other Materials	N/A

Document Name	Author	Issued by	Revision Number	Issue Date	Page No
2019	Emma Humphreys	Armour AS	0	18/06/2019	6



## **Section 4: Positive and Presumed Photos Sheets**

**Item No: 1**

**Sample No: DK/1**

**Location: Officers Lounge – First Floor**



<b>Material Description:</b>	Panel to top of fireplace	
<b>Identification:</b>	Sampled – Asbestos Detected	
<b>Approx. quantity:</b>	1M2	
<b>Accessibility</b>	Low	<i>Assessment Score</i>
<b>Product type:</b>	Cement	1
<b>Extent of Damage:</b>	Minor	1
<b>Surface Treatment:</b>	Unsealed	1
<b>Asbestos type:</b>	Chrysotile	1
<b>Material Assessment Score:</b>		4
<b>Priority Assessment Score:</b>		Negligible
<b>Action:</b>	Manage/Encapsulate	
<b>Comments:</b>	N/A	

Document Name	Author	Issued by	Revision Number	Issue Date	Page No
2019	Emma Humphreys	Armour AS	0	18/06/2019	7





**Item No: 2**

**Sample No: DK/2**

**Location: Officers Lounge – First Floor**



<b>Material Description:</b>	Floor tiles under carpet	
<b>Identification:</b>	Sampled – Asbestos Detected	
<b>Approx. quantity:</b>	50M2	
<b>Accessibility</b>	Low	<i>Assessment Score</i>
<b>Product type:</b>	Cement	1
<b>Extent of Damage:</b>	Minor	1
<b>Surface Treatment:</b>	Non-Friable	0
<b>Asbestos type:</b>	Chrysotile	1
<b>Material Assessment Score:</b>		3
<b>Priority Assessment Score:</b>		Negligible
<b>Action:</b>	Manage	
<b>Comments:</b>	N/A	

Document Name	Author	Issued by	Revision Number	Issue Date	Page No
2019	Emma Humphreys	Armour AS	0	18/06/2019	8



**Item No: 4****Sample No: N/A****Location: WC's x 2**

<b>Material Description:</b>	Reinforced plastic toilet seats	
<b>Identification:</b>	Presumed to Contain Asbestos	
<b>Approx. quantity:</b>	X 2	
<b>Accessibility</b>	High	<i>Assessment Score</i>
<b>Product type:</b>	Composite	1
<b>Extent of Damage:</b>	Good	0
<b>Surface Treatment:</b>	Non-Friable	0
<b>Asbestos type:</b>	Chrysotile	1
<b>Material Assessment Score:</b>		2
<b>Priority Assessment Score:</b>		Negligible
<b>Action:</b>	Manage	
<b>Comments:</b>	No access to samples as it would damage the integrity of the seat	

Document Name	Author	Issued by	Revision Number	Issue Date	Page No
2019	Emma Humphreys	Armour AS	0	18/06/2019	9

**Item No: 7****Sample No: DK/4****Location: Conference Room – First Floor**

<b>Material Description:</b>	Floor tiles under carpet	
<b>Identification:</b>	Sampled – Asbestos Detected	
<b>Approx. quantity:</b>	35M2	
<b>Accessibility</b>	Low	<i>Assessment Score</i>
<b>Product type:</b>	Composite	1
<b>Extent of Damage:</b>	Minor	1
<b>Surface Treatment:</b>	Non-Friable	0
<b>Asbestos type:</b>	Chrysotile	1
<b>Material Assessment Score:</b>		3
<b>Priority Assessment Score:</b>		Negligible
<b>Action:</b>	Manage	
<b>Comments:</b>	N/A	

Document Name	Author	Issued by	Revision Number	Issue Date	Page No
2019	Emma Humphreys	Armour AS	0	18/06/2019	10

**Item No: 9****Sample No: DK/6****Location: Harding Room – First Floor**

<b>Material Description:</b>	Floor tiles and adhesive under carpet	
<b>Identification:</b>	Sampled – Asbestos Detected	
<b>Approx. quantity:</b>	36M2	
<b>Accessibility</b>	Low	<i>Assessment Score</i>
<b>Product type:</b>	Composite	1
<b>Extent of Damage:</b>	Minor	1
<b>Surface Treatment:</b>	Non-Friable	0
<b>Asbestos type:</b>	Chrysotile	1
<b>Material Assessment Score:</b>		3
<b>Priority Assessment Score:</b>		Negligible
<b>Action:</b>	Manage	
<b>Comments:</b>	N/A	

Document Name	Author	Issued by	Revision Number	Issue Date	Page No
2019	Emma Humphreys	Armour AS	0	18/06/2019	11

**Item No: 10****Sample No: DK/7****Location: Corridor – First Floor**

<b>Material Description:</b>	Insulation board infill panels	
<b>Identification:</b>	Sampled – Asbestos Detected	
<b>Approx. quantity:</b>	X 3 Panels (2M2)	
<b>Accessibility</b>	Medium	<i>Assessment Score</i>
<b>Product type:</b>	Asbestos Insulation Board	2
<b>Extent of Damage:</b>	Good	0
<b>Surface Treatment:</b>	Sealed	1
<b>Asbestos type:</b>	Amosite	2
<b>Material Assessment Score:</b>		5
<b>Priority Assessment Score:</b>		Low
<b>Action:</b>	Manage	
<b>Comments:</b>	Located either side of door and panel within door	

Document Name	Author	Issued by	Revision Number	Issue Date	Page No
2019	Emma Humphreys	Armour AS	0	18/06/2019	12

**Item No: 11****Sample No: N/A****Location: Loft Space**

<b>Material Description:</b>	Insulation board panel to door	
<b>Identification:</b>	Presumed to Contain Asbestos	
<b>Approx. quantity:</b>	1M2	
<b>Accessibility</b>	Low	<i>Assessment Score</i>
<b>Product type:</b>	Asbestos Insulation Board	2
<b>Extent of Damage:</b>	Minor	1
<b>Surface Treatment:</b>	Unsealed	2
<b>Asbestos type:</b>	Amosite	2
<b>Material Assessment Score:</b>		7
<b>Priority Assessment Score:</b>		Medium
<b>Action:</b>	Further Investigation Required	
<b>Comments:</b>	No safe access to loft due to the height – The panel was visible from the loft hatch	

Document Name	Author	Issued by	Revision Number	Issue Date	Page No
2019	Emma Humphreys	Armour AS	0	18/06/2019	13

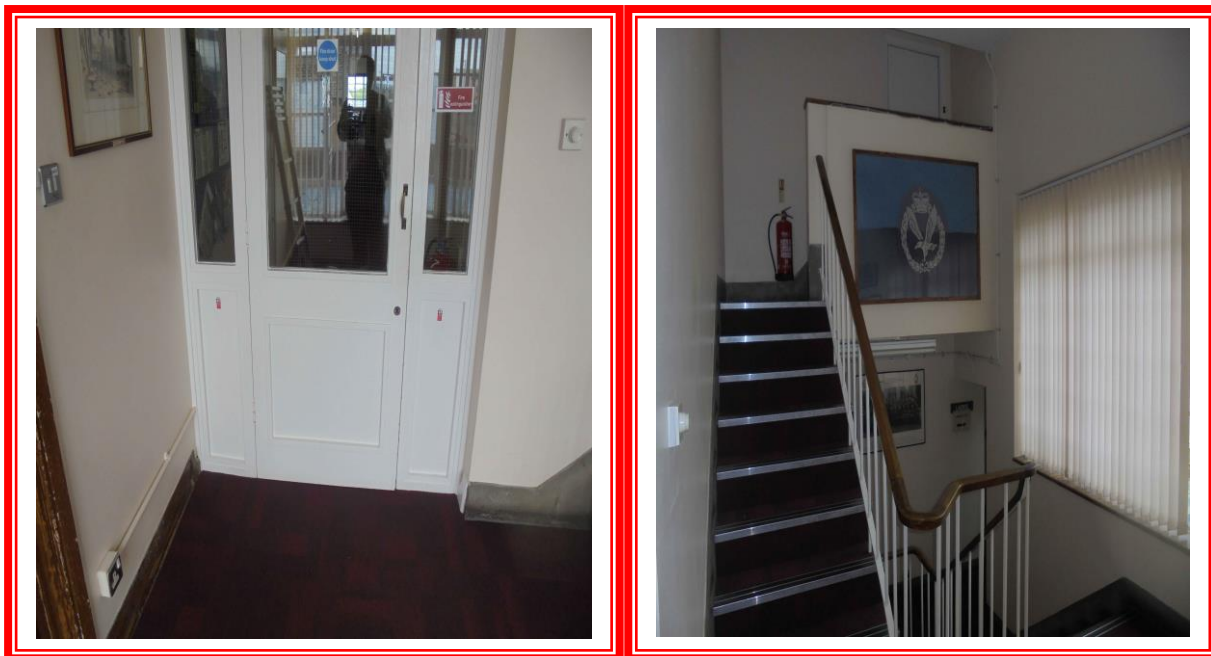


**Item No: 12****Sample No: N/A****Location: Corridor – First Floor**

<b>Material Description:</b>	Floor tiles under carpet	
<b>Identification:</b>	As Per Sample DK/6 – Asbestos Detected	
<b>Approx. quantity:</b>	22M2	
<b>Accessibility</b>	Low	<i>Assessment Score</i>
<b>Product type:</b>	Composite	1
<b>Extent of Damage:</b>	Minor	1
<b>Surface Treatment:</b>	Non-Friable	0
<b>Asbestos type:</b>	Chrysotile	1
<b>Material Assessment Score:</b>		3
<b>Priority Assessment Score:</b>		Negligible
<b>Action:</b>	Manage	
<b>Comments:</b>	N/A	

Document Name	Author	Issued by	Revision Number	Issue Date	Page No
2019	Emma Humphreys	Armour AS	0	18/06/2019	14



**Item No: 13****Sample No: N/A****Location: Landing – First and Second Floor**

<b>Material Description:</b>	Insulation board infill panels to door and either side of door	
<b>Identification:</b>	As Per Sample DK/7 – Asbestos Detected	
<b>Approx. quantity:</b>	X 3 Panels (2M2)	
<b>Accessibility</b>	Medium	Assessment Score
<b>Product type:</b>	Asbestos Insulation Board	2
<b>Extent of Damage:</b>	Good	0
<b>Surface Treatment:</b>	Encapsulated	1
<b>Asbestos type:</b>	Amosite	2
<b>Material Assessment Score:</b>		5
<b>Priority Assessment Score:</b>		Low
<b>Action:</b>	Manage	
<b>Comments:</b>	Non-Asbestos lino under the carpet. Modern stair nosing	

Document Name	Author	Issued by	Revision Number	Issue Date	Page No
2019	Emma Humphreys	Armour AS	0	18/06/2019	15

**Item No: 14****Sample No: N/A****Location: Office – First Floor**

<b>Material Description:</b>	Floor tiles under carpet	
<b>Identification:</b>	As Per Sample DK/6 – Asbestos Detected	
<b>Approx. quantity:</b>	16M2	
<b>Accessibility</b>	Low	<i>Assessment Score</i>
<b>Product type:</b>	Composite	1
<b>Extent of Damage:</b>	Minor	1
<b>Surface Treatment:</b>	Non-Friable	0
<b>Asbestos type:</b>	Chrysotile	1
<b>Material Assessment Score:</b>		3
<b>Priority Assessment Score:</b>		Negligible
<b>Action:</b>	Manage	
<b>Comments:</b>	No access within timber boxings	

Document Name	Author	Issued by	Revision Number	Issue Date	Page No
2019	Emma Humphreys	Armour AS	0	18/06/2019	16



**Item No: 15**

**Sample No: N/A**

**Location: CEO Office – First Floor**



<b>Material Description:</b>	Floor tiles under carpet	
<b>Identification:</b>	As Per Sample DK/1 – Asbestos Detected	
<b>Approx. quantity:</b>	16M2	
<b>Accessibility</b>	Low	<i>Assessment Score</i>
<b>Product type:</b>	Composite	1
<b>Extent of Damage:</b>	Minor	1
<b>Surface Treatment:</b>	Non-Friable	0
<b>Asbestos type:</b>	Chrysotile	1
<b>Material Assessment Score:</b>		3
<b>Priority Assessment Score:</b>		Negligible
<b>Action:</b>	Manage	
<b>Comments:</b>	No access within timber boxing or locked cupboard	

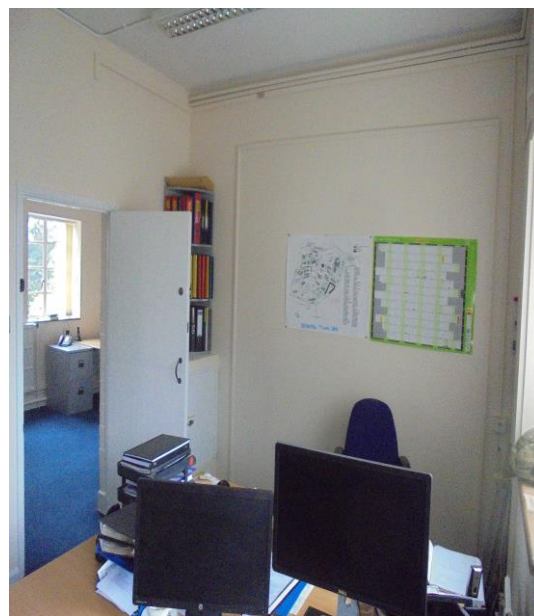
Document Name	Author	Issued by	Revision Number	Issue Date	Page No
2019	Emma Humphreys	Armour AS	0	18/06/2019	17



**Item No: 16**

**Sample No: N/A**

**Location: CEO Office – First Floor**



<b>Material Description:</b>	No access within safe	
<b>Identification:</b>	Presumed to Contain Asbestos	
<b>Approx. quantity:</b>	X 1 Safe	
<b>Accessibility</b>	Low	<i>Assessment Score</i>
<b>Product type:</b>	No Access	2
<b>Extent of Damage:</b>	No Access	2
<b>Surface Treatment:</b>	No Access	2
<b>Asbestos type:</b>	No Access	2
<b>Material Assessment Score:</b>		8
<b>Priority Assessment Score:</b>		Medium
<b>Action:</b>	Manage	
<b>Comments:</b>	N/A	

Document Name	Author	Issued by	Revision Number	Issue Date	Page No
2019	Emma Humphreys	Armour AS	0	18/06/2019	18



**Item No: 18**

**Sample No: N/A**

**Location: WC – First Floor**



<b>Material Description:</b>	Reinforced plastic toilet seat	
<b>Identification:</b>	Presumed to Contain Asbestos	
<b>Approx. quantity:</b>	X 1	
<b>Accessibility</b>	High	Assessment Score
<b>Product type:</b>	Composite	1
<b>Extent of Damage:</b>	Good	0
<b>Surface Treatment:</b>	Non-Friable	0
<b>Asbestos type:</b>	Chrysotile	1
<b>Material Assessment Score:</b>		2
<b>Priority Assessment Score:</b>		Negligible
<b>Action:</b>	Manage	
<b>Comments:</b>	No access to sample as it would damage the integrity of the seat. No access within the timber boxing	

Document Name	Author	Issued by	Revision Number	Issue Date	Page No
2019	Emma Humphreys	Armour AS	0	18/06/2019	19





**Item No: 19**

**Sample No: N/A**

**Location: Landing/Corridor – First Floor**



<b>Material Description:</b>	Components within electrical boxes	
<b>Identification:</b>	Presumed to Contain Asbestos	
<b>Approx. quantity:</b>	X 2 Boxes	
<b>Accessibility</b>	Low	<i>Assessment Score</i>
<b>Product type:</b>	No Access	2
<b>Extent of Damage:</b>	No Access	1
<b>Surface Treatment:</b>	No Access	1
<b>Asbestos type:</b>	No Access	1
<b>Material Assessment Score:</b>		5
<b>Priority Assessment Score:</b>		Low
<b>Action:</b>	Manage	
<b>Comments:</b>	No access to sample as live	

Document Name	Author	Issued by	Revision Number	Issue Date	Page No
2019	Emma Humphreys	Armour AS	0	18/06/2019	20



**Item No: 21****Sample No: DK/8****Location: WC, Store and Changing Room – Ground Floor**

<b>Material Description:</b>	Reinforced plastic cisterns	
<b>Identification:</b>	Sampled – Asbestos Detected	
<b>Approx. quantity:</b>	X 4	
<b>Accessibility</b>	Low	<i>Assessment Score</i>
<b>Product type:</b>	Composite	1
<b>Extent of Damage:</b>	Minor	1
<b>Surface Treatment:</b>	Non-Friable	0
<b>Asbestos type:</b>	Amosite	2
<b>Material Assessment Score:</b>		4
<b>Priority Assessment Score:</b>		Negligible
<b>Action:</b>	Manage	
<b>Comments:</b>	N/A	

Document Name	Author	Issued by	Revision Number	Issue Date	Page No
2019	Emma Humphreys	Armour AS	0	18/06/2019	21



**Item No: 22**

**Sample No: DK/9**

**Location: WC – Ground Floor**



<b>Material Description:</b>	Cement pipework sleeve within wall	
<b>Identification:</b>	Sampled – Asbestos Detected	
<b>Approx. quantity:</b>	<1LM	
<b>Accessibility</b>	Low	<i>Assessment Score</i>
<b>Product type:</b>	Cement	1
<b>Extent of Damage:</b>	Minor	1
<b>Surface Treatment:</b>	Unsealed	1
<b>Asbestos type:</b>	Chrysotile	1
<b>Material Assessment Score:</b>		4
<b>Priority Assessment Score:</b>		Negligible
<b>Action:</b>	Manage	
<b>Comments:</b>	N/A	

Document Name	Author	Issued by	Revision Number	Issue Date	Page No
2019	Emma Humphreys	Armour AS	0	18/06/2019	22

**Item No: 23****Sample No: N/A****Location: Changing Room – Ground Floor**

<b>Material Description:</b>	Reinforced plastic toilet seats	
<b>Identification:</b>	Presumed to Contain Asbestos	
<b>Approx. quantity:</b>	X 2	
<b>Accessibility</b>	High	<i>Assessment Score</i>
<b>Product type:</b>	Composite	1
<b>Extent of Damage:</b>	Good	0
<b>Surface Treatment:</b>	Non-Friable	0
<b>Asbestos type:</b>	Chrysotile	1
<b>Material Assessment Score:</b>		2
<b>Priority Assessment Score:</b>		Negligible
<b>Action:</b>	Manage	
<b>Comments:</b>	N/A	

Document Name	Author	Issued by	Revision Number	Issue Date	Page No
2019	Emma Humphreys	Armour AS	0	18/06/2019	23



**Item No: 25**

**Sample No: DK/10**

**Location: Offices x 2 – Ground Floor**



<b>Material Description:</b>	Floor tiles and adhesive under carpet	
<b>Identification:</b>	Sampled – Asbestos Detected	
<b>Approx. quantity:</b>	28M2	
<b>Accessibility</b>	Low	<i>Assessment Score</i>
<b>Product type:</b>	Composite	1
<b>Extent of Damage:</b>	Moderate	2
<b>Surface Treatment:</b>	Non-Friable	0
<b>Asbestos type:</b>	Chrysotile	1
<b>Material Assessment Score:</b>		4
<b>Priority Assessment Score:</b>		Negligible
<b>Action:</b>	Manage	
<b>Comments:</b>	No access within timber boxings or locked cupboard	

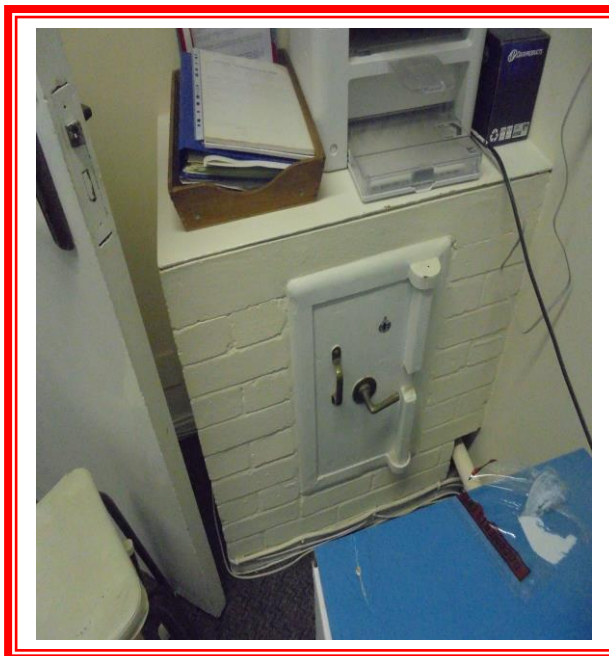
Document Name	Author	Issued by	Revision Number	Issue Date	Page No
2019	Emma Humphreys	Armour AS	0	18/06/2019	24



**Item No: 26**

**Sample No: N/A**

**Location: Office – Ground Floor**



<b>Material Description:</b>	No access within Safe	
<b>Identification:</b>	Presumed to Contain Asbestos	
<b>Approx. quantity:</b>	X 1 Safe	
<b>Accessibility</b>	Low	<i>Assessment Score</i>
<b>Product type:</b>	No Access	2
<b>Extent of Damage:</b>	No Access	2
<b>Surface Treatment:</b>	No Access	2
<b>Asbestos type:</b>	No Access	2
<b>Material Assessment Score:</b>		8
<b>Priority Assessment Score:</b>		Medium
<b>Action:</b>	Manage	
<b>Comments:</b>	No access	

Document Name	Author	Issued by	Revision Number	Issue Date	Page No
2019	Emma Humphreys	Armour AS	0	18/06/2019	25



**Item No: 27****Sample No: N/A****Location: Offices x 2**

<b>Material Description:</b>	Floor tiles and adhesive under carpets	
<b>Identification:</b>	As Per Sample DK/10 – Asbestos Detected	
<b>Approx. quantity:</b>	22M2	
<b>Accessibility</b>	Low	<i>Assessment Score</i>
<b>Product type:</b>	Composite	1
<b>Extent of Damage:</b>	Good	0
<b>Surface Treatment:</b>	Non-Friable	0
<b>Asbestos type:</b>	Chrysotile	1
<b>Material Assessment Score:</b>		2
<b>Priority Assessment Score:</b>		Negligible
<b>Action:</b>	Manage	
<b>Comments:</b>	Located in both rooms	

Document Name	Author	Issued by	Revision Number	Issue Date	Page No
2019	Emma Humphreys	Armour AS	0	18/06/2019	26



**Item No: 28****Sample No: N/A****Location: Admin Office and Staff Instructors Office –  
Ground Floor**

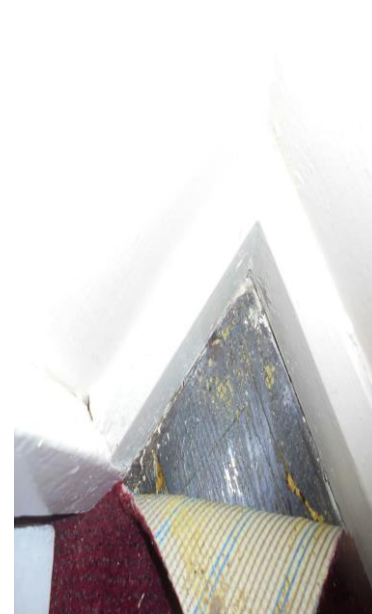
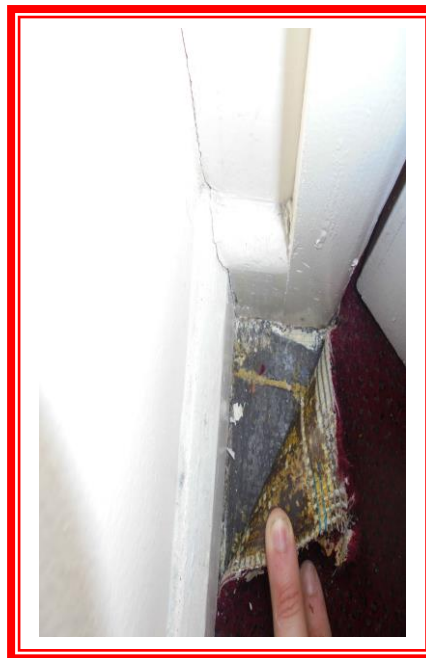
<b>Material Description:</b>	Floor tiles and adhesive under carpets	
<b>Identification:</b>	As Per Sample DK/10 – Asbestos Detected	
<b>Approx. quantity:</b>	30M2	
<b>Accessibility</b>	Low	<i>Assessment Score</i>
<b>Product type:</b>	Composite	1
<b>Extent of Damage:</b>	Minor	1
<b>Surface Treatment:</b>	Non-Friable	0
<b>Asbestos type:</b>	Chrysotile	1
<b>Material Assessment Score:</b>		3
<b>Priority Assessment Score:</b>		Negligible
<b>Action:</b>	Manage	
<b>Comments:</b>	N/A	

Document Name	Author	Issued by	Revision Number	Issue Date	Page No
2019	Emma Humphreys	Armour AS	0	18/06/2019	27

**Item No: 29****Sample No: N/A****Location: Admin Office and Staff Instructor Office**

<b>Material Description:</b>	No access within Safes	
<b>Identification:</b>	Presumed to Contain Asbestos	
<b>Approx. quantity:</b>	X 2 Safes	
<b>Accessibility</b>	Low	<i>Assessment Score</i>
<b>Product type:</b>	No Access	2
<b>Extent of Damage:</b>	No Access	2
<b>Surface Treatment:</b>	No Access	2
<b>Asbestos type:</b>	No Access	2
<b>Material Assessment Score:</b>		8
<b>Priority Assessment Score:</b>		Medium
<b>Action:</b>	Manage	
<b>Comments:</b>	No access within safe casings	

Document Name	Author	Issued by	Revision Number	Issue Date	Page No
2019	Emma Humphreys	Armour AS	0	18/06/2019	28

**Item No: 30****Sample No: N/A****Location: Offices x 3 – Ground Floor**

<b>Material Description:</b>	Floor tiles and adhesive under carpet	
<b>Identification:</b>	As Per Sample DK/10 – Asbestos Detected	
<b>Approx. quantity:</b>	40M2	
<b>Accessibility</b>	Low	<i>Assessment Score</i>
<b>Product type:</b>	Composite	1
<b>Extent of Damage:</b>	Minor	1
<b>Surface Treatment:</b>	Non-Friable	0
<b>Asbestos type:</b>	Chrysotile	1
<b>Material Assessment Score:</b>		3
<b>Priority Assessment Score:</b>		Negligible
<b>Action:</b>	Manage	
<b>Comments:</b>	N/A	

Document Name	Author	Issued by	Revision Number	Issue Date	Page No
2019	Emma Humphreys	Armour AS	0	18/06/2019	29

**Item No: 31****Sample No: N/A****Location: Corridor – Ground Floor**

<b>Material Description:</b>	Floor tiles and adhesive under carpet	
<b>Identification:</b>	As Per Sample DK/10 – Asbestos Detected	
<b>Approx. quantity:</b>	30M2	
<b>Accessibility</b>	Low	<i>Assessment Score</i>
<b>Product type:</b>	Composite	1
<b>Extent of Damage:</b>	Good	0
<b>Surface Treatment:</b>	Non-Friable	0
<b>Asbestos type:</b>	Chrysotile	1
<b>Material Assessment Score:</b>		2
<b>Priority Assessment Score:</b>		Negligible
<b>Action:</b>	Manage	
<b>Comments:</b>	N/A	

Document Name	Author	Issued by	Revision Number	Issue Date	Page No
2019	Emma Humphreys	Armour AS	0	18/06/2019	30



**Item No: 32**

**Sample No: DK/11**

**Location: Main Hall and Gym/Stage**



<b>Material Description:</b>	Red and black floor tiles and adhesive	
<b>Identification:</b>	Sampled – Asbestos Detected	
<b>Approx. quantity:</b>	50M2	
<b>Accessibility</b>	High	<i>Assessment Score</i>
<b>Product type:</b>	Composite	1
<b>Extent of Damage:</b>	Moderate	2
<b>Surface Treatment:</b>	Non-Friable	0
<b>Asbestos type:</b>	Chrysotile	1
<b>Material Assessment Score:</b>		4
<b>Priority Assessment Score:</b>		Negligible
<b>Action:</b>	Manage	
<b>Comments:</b>	No access under laminate flooring to main hall. Limited access above main hall suspended ceiling due to height	

Document Name	Author	Issued by	Revision Number	Issue Date	Page No
2019	Emma Humphreys	Armour AS	0	18/06/2019	31





**Item No: 34**

**Sample No: N/A**

**Location: Cadet Locker Room**



<b>Material Description:</b>	Red and Black floor tiles and adhesive	
<b>Identification:</b>	As Per Sample DK/11 – Asbestos Detected	
<b>Approx. quantity:</b>	18M2	
<b>Accessibility</b>	High	<i>Assessment Score</i>
<b>Product type:</b>	Composite	1
<b>Extent of Damage:</b>	Moderate	2
<b>Surface Treatment:</b>	Non-Friable	0
<b>Asbestos type:</b>	Chrysotile	1
<b>Material Assessment Score:</b>		4
<b>Priority Assessment Score:</b>		Negligible
<b>Action:</b>	Manage	
<b>Comments:</b>	Limited access within room due to lockers	

Document Name	Author	Issued by	Revision Number	Issue Date	Page No
2019	Emma Humphreys	Armour AS	0	18/06/2019	32



**Item No: 41****Sample No: N/A****Location: External**

<b>Material Description:</b>	Insulation board soffits	
<b>Identification:</b>	As Per Previous Sample GU/TA/0020/17 – Asbestos Detected	
<b>Approx. quantity:</b>	110LM	
<b>Accessibility</b>	Low	Assessment Score
<b>Product type:</b>	Asbestos Insulation Board	2
<b>Extent of Damage:</b>	Minor	1
<b>Surface Treatment:</b>	Encapsulated	1
<b>Asbestos type:</b>	Amosite	2
<b>Material Assessment Score:</b>		6
<b>Priority Assessment Score:</b>		Medium
<b>Action:</b>	Manage	
<b>Comments:</b>	No access above UPVC soffits. Previous survey states that there are asbestos insulation board soffits behind UPVC soffits.	

Document Name	Author	Issued by	Revision Number	Issue Date	Page No
2019	Emma Humphreys	Armour AS	0	18/06/2019	33

**Item No: 43****Sample No: DK/12****Location: External to garages**

<b>Material Description:</b>	Cement Downpipes	
<b>Identification:</b>	Sampled – Asbestos Detected	
<b>Approx. quantity:</b>	X 3 (6LM Each)	
<b>Accessibility</b>	Low	<i>Assessment Score</i>
<b>Product type:</b>	Cement	1
<b>Extent of Damage:</b>	Moderate	2
<b>Surface Treatment:</b>	Unsealed	1
<b>Asbestos type:</b>	Chrysotile	1
<b>Material Assessment Score:</b>		5
<b>Priority Assessment Score:</b>		Medium
<b>Action:</b>	Manage	
<b>Comments:</b>	N/A	

Document Name	Author	Issued by	Revision Number	Issue Date	Page No
2019	Emma Humphreys	Armour AS	0	18/06/2019	34

**Item No: 44****Sample No: N/A****Location: External to Garages**

<b>Material Description:</b>	Cement guttering	
<b>Identification:</b>	As Per Sample DK/12 – Asbestos Detected	
<b>Approx. quantity:</b>	60LM	
<b>Accessibility</b>	Low	<i>Assessment Score</i>
<b>Product type:</b>	Cement	1
<b>Extent of Damage:</b>	Minor	1
<b>Surface Treatment:</b>	Unsealed	1
<b>Asbestos type:</b>	Chrysotile	1
<b>Material Assessment Score:</b>		4
<b>Priority Assessment Score:</b>		Negligible
<b>Action:</b>	Manage	
<b>Comments:</b>	N/A	

Document Name	Author	Issued by	Revision Number	Issue Date	Page No
2019	Emma Humphreys	Armour AS	0	18/06/2019	35





**Item No: 45**

**Sample No: N/A**

**Location: External to Garages**



<b>Material Description:</b>	Profiled cement sheet debris	
<b>Identification:</b>	As Per Sample DK/19 – Asbestos Detected	
<b>Approx. quantity:</b>	1M2	
<b>Accessibility</b>	Medium	<i>Assessment Score</i>
<b>Product type:</b>	Cement	1
<b>Extent of Damage:</b>	Moderate	2
<b>Surface Treatment:</b>	Unsealed	1
<b>Asbestos type:</b>	Chrysotile	1
<b>Material Assessment Score:</b>		5
<b>Priority Assessment Score:</b>		Medium
<b>Action:</b>	Remove	
<b>Comments:</b>	N/A	

Document Name	Author	Issued by	Revision Number	Issue Date	Page No
2019	Emma Humphreys	Armour AS	0	18/06/2019	36

**Item No: 46****Sample No: DK/19****Location: External to Garages**

<b>Material Description:</b>	Profiled cement roof sheets	
<b>Identification:</b>	Sampled – Asbestos Detected	
<b>Approx. quantity:</b>	200M2	
<b>Accessibility</b>	Low	<i>Assessment Score</i>
<b>Product type:</b>	Cement	1
<b>Extent of Damage:</b>	Moderate	1
<b>Surface Treatment:</b>	Unsealed	1
<b>Asbestos type:</b>	Chrysotile	1
<b>Material Assessment Score:</b>		4
<b>Priority Assessment Score:</b>		Negligible
<b>Action:</b>	Manage	
<b>Comments:</b>	N/A	

Document Name	Author	Issued by	Revision Number	Issue Date	Page No
2019	Emma Humphreys	Armour AS	0	18/06/2019	37



**Item No: 47****Sample No: N/A****Location: External to Garages**

<b>Material Description:</b>	Cement roof edging	
<b>Identification:</b>	Presumed to Contain Asbestos	
<b>Approx. quantity:</b>	8LM	
<b>Accessibility</b>	Low	<i>Assessment Score</i>
<b>Product type:</b>	Cement	1
<b>Extent of Damage:</b>	Minor	1
<b>Surface Treatment:</b>	Unsealed	1
<b>Asbestos type:</b>	Chrysotile	1
<b>Material Assessment Score:</b>		4
<b>Priority Assessment Score:</b>		Negligible
<b>Action:</b>	Manage	
<b>Comments:</b>	No access to sample due to the height	

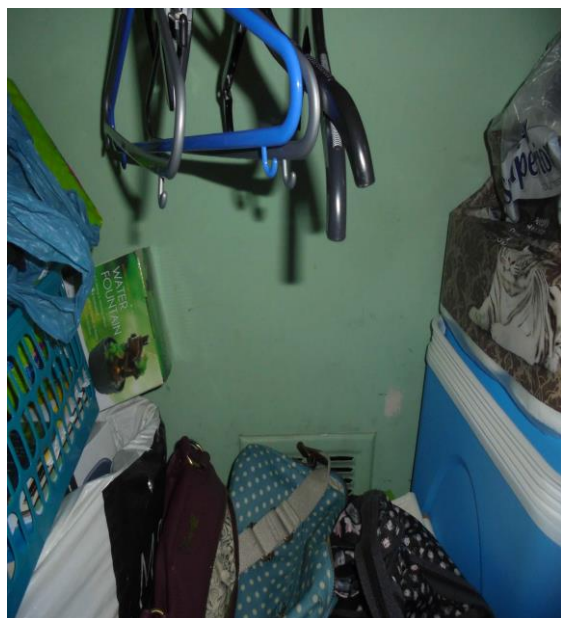
Document Name	Author	Issued by	Revision Number	Issue Date	Page No
2019	Emma Humphreys	Armour AS	0	18/06/2019	38



**Item No: 51**

**Sample No: DK/13**

**Location: Bedroom 2 and Cupboard – Second Floor**



<b>Material Description:</b>	Cement wall panel	
<b>Identification:</b>	Sampled – Asbestos Detected	
<b>Approx. quantity:</b>	3M2	
<b>Accessibility</b>	Medium	Assessment Score
<b>Product type:</b>	Cement	1
<b>Extent of Damage:</b>	Good	0
<b>Surface Treatment:</b>	Unsealed	1
<b>Asbestos type:</b>	Chrysotile	1
<b>Material Assessment Score:</b>		3
<b>Priority Assessment Score:</b>		Negligible
<b>Action:</b>	Manage	
<b>Comments:</b>	Entire back wall of cupboard	

Document Name	Author	Issued by	Revision Number	Issue Date	Page No
2019	Emma Humphreys	Armour AS	0	18/06/2019	39



**Item No: 52**

**Sample No: DK/14**

**Location: Bedroom 2 and Cupboard – Second Floor**



<b>Material Description:</b>	Floor tiles and adhesive under carpet	
<b>Identification:</b>	Sampled – Asbestos Detected	
<b>Approx. quantity:</b>	2M2	
<b>Accessibility</b>	Low	<i>Assessment Score</i>
<b>Product type:</b>	Composite	1
<b>Extent of Damage:</b>	Minor	1
<b>Surface Treatment:</b>	Non-Friable	0
<b>Asbestos type:</b>	Chrysotile	1
<b>Material Assessment Score:</b>		3
<b>Priority Assessment Score:</b>		Negligible
<b>Action:</b>	Manage	
<b>Comments:</b>	May also be under fixed carpet in bedroom 2 – Apply caution	

Document Name	Author	Issued by	Revision Number	Issue Date	Page No
2019	Emma Humphreys	Armour AS	0	18/06/2019	40

**Item No: 53****Sample No: N/A****Location: Bedroom 1 and Cupboard – Second Floor**

<b>Material Description:</b>	Insulation board ceiling to cupboard	
<b>Identification:</b>	As Per Previous Sample GU/TA/001/17 – Asbestos Detected	
<b>Approx. quantity:</b>	2M2	
<b>Accessibility</b>	Medium	Assessment Score
<b>Product type:</b>	Asbestos Insulation Board	2
<b>Extent of Damage:</b>	Moderate	2
<b>Surface Treatment:</b>	Encapsulated	1
<b>Asbestos type:</b>	Amosite	2
<b>Material Assessment Score:</b>		7
<b>Priority Assessment Score:</b>		Medium
<b>Action:</b>	Encapsulate	
<b>Comments:</b>	Holes in the ceiling should be encapsulated. No access under the fixed carpet.	

Document Name	Author	Issued by	Revision Number	Issue Date	Page No
2019	Emma Humphreys	Armour AS	0	18/06/2019	41



**Item No: 56**

**Sample No: N/A**

**Location: Medical Room – First Floor**



<b>Material Description:</b>	Floor tiles under carpet	
<b>Identification:</b>	As Per Sampled DK/6 – No Asbestos Detected	
<b>Approx. quantity:</b>	15M2	
<b>Accessibility</b>	Low	Assessment Score
<b>Product type:</b>	Composite	1
<b>Extent of Damage:</b>	Minor	1
<b>Surface Treatment:</b>	Non-Friable	0
<b>Asbestos type:</b>	Chrysotile	1
<b>Material Assessment Score:</b>		3
<b>Priority Assessment Score:</b>		Negligible
<b>Action:</b>	Manage	
<b>Comments:</b>	N/A	

Document Name	Author	Issued by	Revision Number	Issue Date	Page No
2019	Emma Humphreys	Armour AS	0	18/06/2019	42



**Item No: 57****Sample No: N/A****Location: Office 22 – First Floor**

<b>Material Description:</b>	No access within Office 22	
<b>Identification:</b>	Presumed to Contain Asbestos	
<b>Approx. quantity:</b>	Unknown	
<b>Accessibility</b>	Low	<i>Assessment Score</i>
<b>Product type:</b>	No Access	3
<b>Extent of Damage:</b>	No Access	3
<b>Surface Treatment:</b>	No Access	3
<b>Asbestos type:</b>	No Access	3
<b>Material Assessment Score:</b>		12
<b>Priority Assessment Score:</b>		High
<b>Action:</b>	Further Investigation Required	
<b>Comments:</b>	Locked and no key available on day of survey	

Document Name	Author	Issued by	Revision Number	Issue Date	Page No
2019	Emma Humphreys	Armour AS	0	18/06/2019	43



**Item No: 63**

**Sample No: N/A**

**Location: Store R14 – Ground Floor**



<b>Material Description:</b>	No access within Store R14	
<b>Identification:</b>	Presumed to Contain Asbestos	
<b>Approx. quantity:</b>	Unknown	
<b>Accessibility</b>	Low	<i>Assessment Score</i>
<b>Product type:</b>	No Access	3
<b>Extent of Damage:</b>	No Access	3
<b>Surface Treatment:</b>	No Access	3
<b>Asbestos type:</b>	No Access	3
<b>Material Assessment Score:</b>		12
<b>Priority Assessment Score:</b>		High
<b>Action:</b>	Further Investigation Required	
<b>Comments:</b>	Locked and no key available on day of survey	

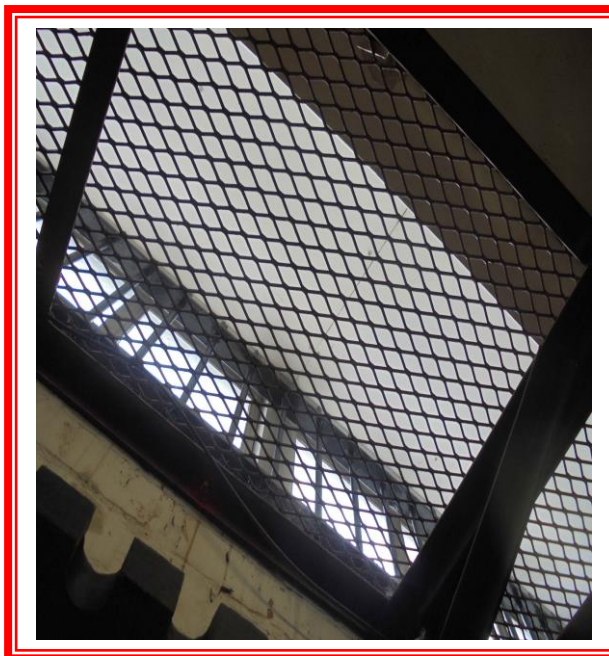
Document Name	Author	Issued by	Revision Number	Issue Date	Page No
2019	Emma Humphreys	Armour AS	0	18/06/2019	44



**Item No: 65**

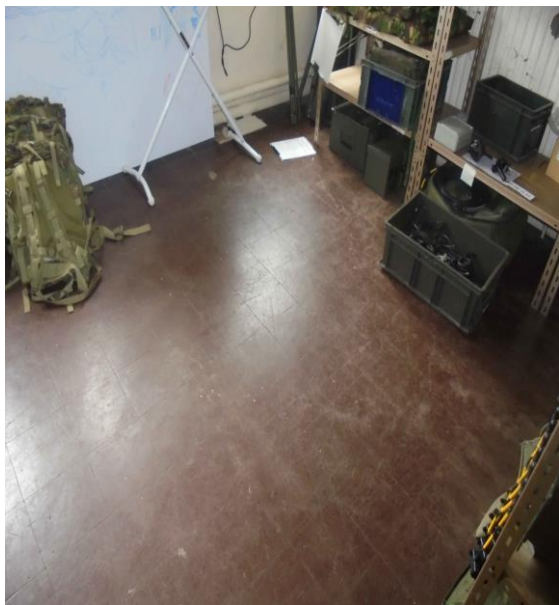
**Sample No: N/A**

**Location: Ammunition Store**



<b>Material Description:</b>	Panels above cage	
<b>Identification:</b>	Presumed to Contain Asbestos	
<b>Approx. quantity:</b>	6LM	
<b>Accessibility</b>	Low	<i>Assessment Score</i>
<b>Product type:</b>	Asbestos Insulation Board	2
<b>Extent of Damage:</b>	Minor	1
<b>Surface Treatment:</b>	Encapsulated	1
<b>Asbestos type:</b>	Amosite	2
<b>Material Assessment Score:</b>		6
<b>Priority Assessment Score:</b>		Medium
<b>Action:</b>	Further Investigation Required	
<b>Comments:</b>	No access to sample as located above cage	

Document Name	Author	Issued by	Revision Number	Issue Date	Page No
2019	Emma Humphreys	Armour AS	0	18/06/2019	45

**Item No: 66****Sample No: N/A****Location: Signals Store – Ground Floor**

<b>Material Description:</b>	Floor tiles and adhesive	
<b>Identification:</b>	As Per Sample DK/11 – Asbestos Detected	
<b>Approx. quantity:</b>	20M2	
<b>Accessibility</b>	High	<i>Assessment Score</i>
<b>Product type:</b>	Composite	1
<b>Extent of Damage:</b>	Moderate	2
<b>Surface Treatment:</b>	Non-Friable	0
<b>Asbestos type:</b>	Chrysotile	1
<b>Material Assessment Score:</b>		4
<b>Priority Assessment Score:</b>		Negligible
<b>Action:</b>	Manage	
<b>Comments:</b>	N/A	

Document Name	Author	Issued by	Revision Number	Issue Date	Page No
2019	Emma Humphreys	Armour AS	0	18/06/2019	46

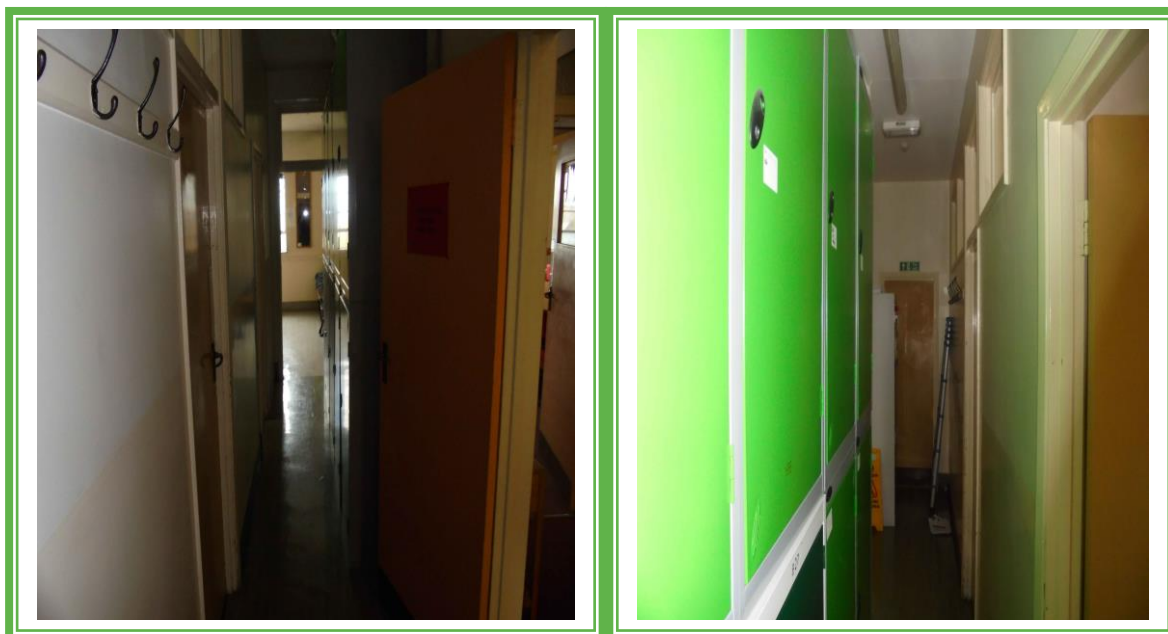


## Section 5: Negative Photos Sheets

**Item No: 3**

**Sample No: N/A**

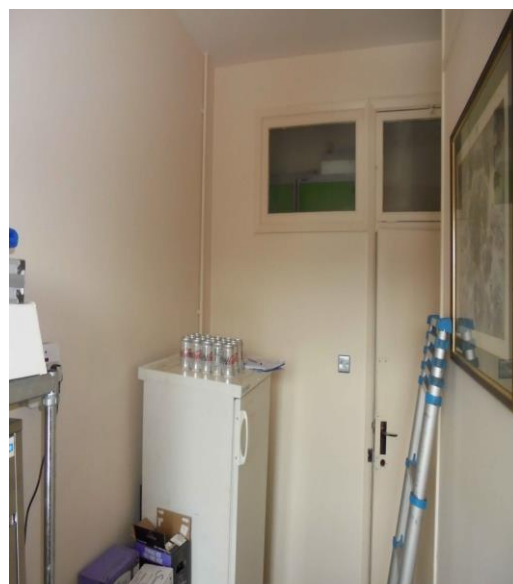
**Location: Corridor**



<b>Material Description:</b>	Visual Inspection – No Suspect Materials Found	
<b>Identification:</b>	N/A	
<b>Approx. quantity:</b>	N/A	
<b>Accessibility</b>	N/A	<i>Assessment Score</i>
<b>Product type:</b>		N/A
<b>Extent of Damage:</b>		N/A
<b>Surface Treatment:</b>		N/A
<b>Asbestos type:</b>		N/A
<b>Material Assessment Score:</b>		N/A
<b>Priority Assessment Score:</b>		N/A
<b>Action:</b>	N/A	
<b>Comments:</b>	N/A	

Document Name	Author	Issued by	Revision Number	Issue Date	Page No
2019	Emma Humphreys	Armour AS	0	18/06/2019	47



**Item No: 5****Sample No: N/A****Location: Servery and Pantry**

<b>Material Description:</b>	Visual Inspection – No Suspect Materials Found	
<b>Identification:</b>	N/A	
<b>Approx. quantity:</b>	N/A	
<b>Accessibility</b>	N/A	<i>Assessment Score</i>
<b>Product type:</b>		N/A
<b>Extent of Damage:</b>		N/A
<b>Surface Treatment:</b>		N/A
<b>Asbestos type:</b>		N/A
<b>Material Assessment Score:</b>		N/A
<b>Priority Assessment Score:</b>		N/A
<b>Action:</b>	N/A	
<b>Comments:</b>	N/A	

Document Name	Author	Issued by	Revision Number	Issue Date	Page No
2019	Emma Humphreys	Armour AS	0	18/06/2019	48

**Item No: 6****Sample No: DK/3****Location: Conference Room**

<b>Material Description:</b>	Textured coating to canopy	
<b>Identification:</b>	Sampled – No Asbestos Detected	
<b>Approx. quantity:</b>	5M2	
<b>Accessibility</b>	N/A	<i>Assessment Score</i>
<b>Product type:</b>		N/A
<b>Extent of Damage:</b>		N/A
<b>Surface Treatment:</b>		N/A
<b>Asbestos type:</b>		N/A
<b>Material Assessment Score:</b>		N/A
<b>Priority Assessment Score:</b>		N/A
<b>Action:</b>	N/A	
<b>Comments:</b>	N/A	

Document Name	Author	Issued by	Revision Number	Issue Date	Page No
2019	Emma Humphreys	Armour AS	0	18/06/2019	49



**Item No: 8**

**Sample No: DK/5**

**Location: Kitchen – First Floor**



<b>Material Description:</b>	Sink pad	
<b>Identification:</b>	Sampled – No Asbestos Detected	
<b>Approx. quantity:</b>	X 3 Pads	
<b>Accessibility</b>	N/A	<i>Assessment Score</i>
<b>Product type:</b>		N/A
<b>Extent of Damage:</b>		N/A
<b>Surface Treatment:</b>		N/A
<b>Asbestos type:</b>		N/A
<b>Material Assessment Score:</b>		N/A
<b>Priority Assessment Score:</b>		N/A
<b>Action:</b>	N/A	
<b>Comments:</b>	N/A	

Document Name	Author	Issued by	Revision Number	Issue Date	Page No
2019	Emma Humphreys	Armour AS	0	18/06/2019	50



**Item No: 17**

**Sample No: N/A**

**Location: Admin Office**



<b>Material Description:</b>	Visual Inspection – No Suspect Materials Found	
<b>Identification:</b>	N/A	
<b>Approx. quantity:</b>	N/A	
<b>Accessibility</b>	N/A	<i>Assessment Score</i>
<b>Product type:</b>		N/A
<b>Extent of Damage:</b>		N/A
<b>Surface Treatment:</b>		N/A
<b>Asbestos type:</b>		N/A
<b>Material Assessment Score:</b>		N/A
<b>Priority Assessment Score:</b>		N/A
<b>Action:</b>	N/A	
<b>Comments:</b>	N/A	

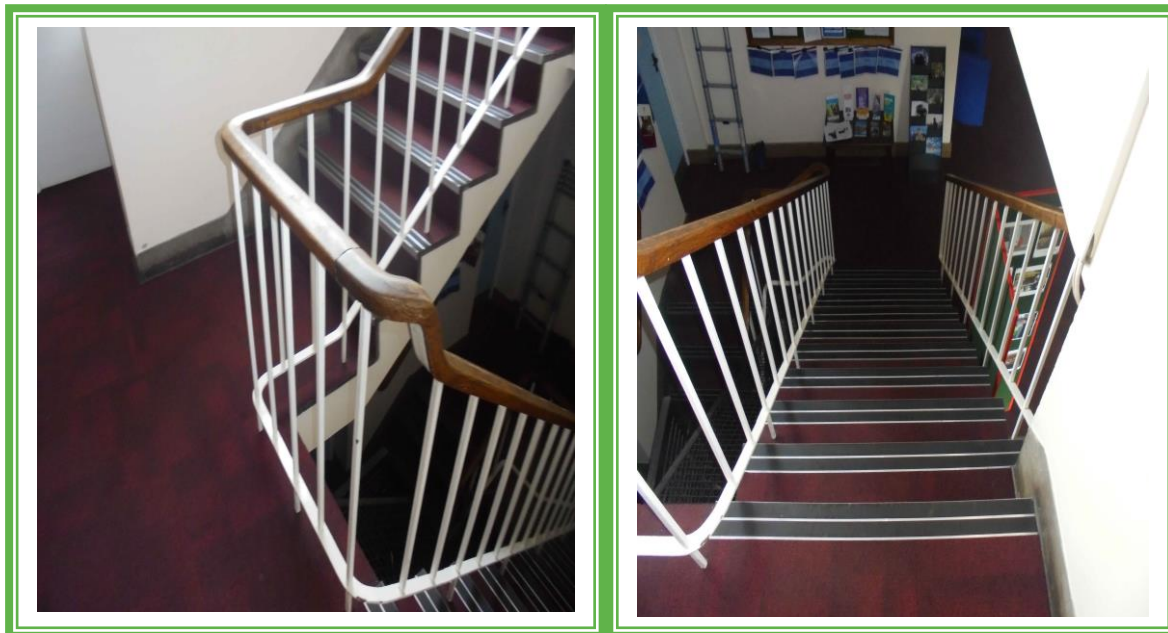
Document Name	Author	Issued by	Revision Number	Issue Date	Page No
2019	Emma Humphreys	Armour AS	0	18/06/2019	51



**Item No: 20**

**Sample No: N/A**

**Location: Stairwell – First to Ground Floor**



<b>Material Description:</b>	Visual Inspection – No Suspect Materials Found	
<b>Identification:</b>	N/A	
<b>Approx. quantity:</b>	N/A	
<b>Accessibility</b>	N/A	<i>Assessment Score</i>
<b>Product type:</b>		N/A
<b>Extent of Damage:</b>		N/A
<b>Surface Treatment:</b>		N/A
<b>Asbestos type:</b>		N/A
<b>Material Assessment Score:</b>		N/A
<b>Priority Assessment Score:</b>		N/A
<b>Action:</b>	N/A	
<b>Comments:</b>	Modern stair nosing	

Document Name	Author	Issued by	Revision Number	Issue Date	Page No
2019	Emma Humphreys	Armour AS	0	18/06/2019	52

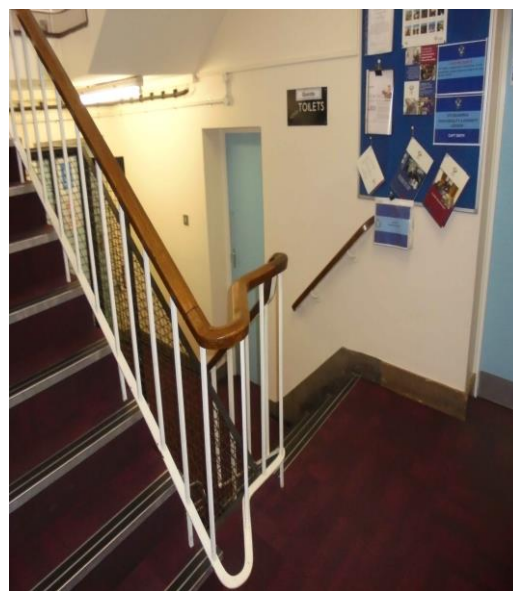
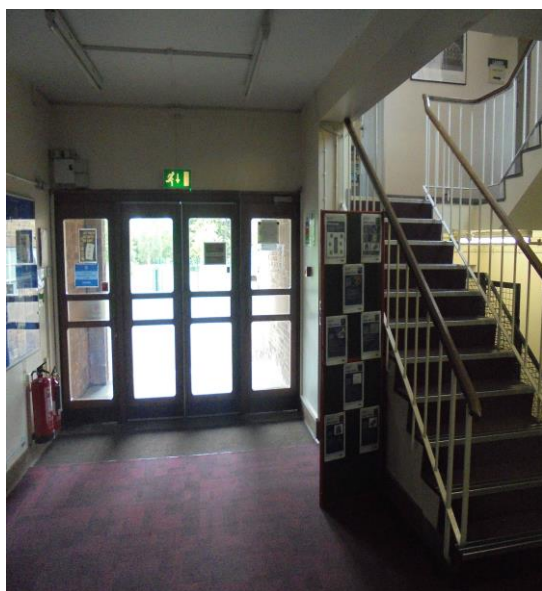




**Item No: 24**

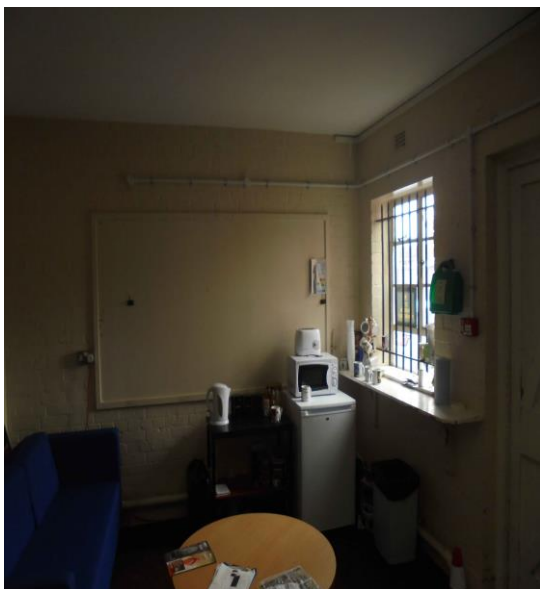
**Sample No: N/A**

**Location: Main Entrance Lobby**



<b>Material Description:</b>	Visual Inspection – No Suspect Materials Found	
<b>Identification:</b>	N/A	
<b>Approx. quantity:</b>	N/A	
<b>Accessibility</b>	N/A	<i>Assessment Score</i>
<b>Product type:</b>		N/A
<b>Extent of Damage:</b>		N/A
<b>Surface Treatment:</b>		N/A
<b>Asbestos type:</b>		N/A
<b>Material Assessment Score:</b>		N/A
<b>Priority Assessment Score:</b>		N/A
<b>Action:</b>	N/A	
<b>Comments:</b>	N/A	

Document Name	Author	Issued by	Revision Number	Issue Date	Page No
2019	Emma Humphreys	Armour AS	0	18/06/2019	53

**Item No: 33****Sample No: N/A****Location: Locker Room**

<b>Material Description:</b>	Visual Inspection – No Suspect Materials Found	
<b>Identification:</b>	N/A	
<b>Approx. quantity:</b>	N/A	
<b>Accessibility</b>	N/A	<i>Assessment Score</i>
<b>Product type:</b>		N/A
<b>Extent of Damage:</b>		N/A
<b>Surface Treatment:</b>		N/A
<b>Asbestos type:</b>		N/A
<b>Material Assessment Score:</b>		N/A
<b>Priority Assessment Score:</b>		N/A
<b>Action:</b>	N/A	
<b>Comments:</b>	N/A	

Document Name	Author	Issued by	Revision Number	Issue Date	Page No
2019	Emma Humphreys	Armour AS	0	18/06/2019	54



**Item No: 35**

**Sample No: N/A**

**Location: Corridor – Ground Floor**



<b>Material Description:</b>	Visual Inspection – No Suspect Materials Found	
<b>Identification:</b>	N/A	
<b>Approx. quantity:</b>	N/A	
<b>Accessibility</b>	N/A	<i>Assessment Score</i>
<b>Product type:</b>		N/A
<b>Extent of Damage:</b>		N/A
<b>Surface Treatment:</b>		N/A
<b>Asbestos type:</b>		N/A
<b>Material Assessment Score:</b>		N/A
<b>Priority Assessment Score:</b>		N/A
<b>Action:</b>	N/A	
<b>Comments:</b>	Modern Stair Nosing	

Document Name	Author	Issued by	Revision Number	Issue Date	Page No
2019	Emma Humphreys	Armour AS	0	18/06/2019	55

**Item No: 36****Sample No: N/A****Location: WC – Ground Floor**

<b>Material Description:</b>	Visual Inspection – No Suspect Materials Found	
<b>Identification:</b>	N/A	
<b>Approx. quantity:</b>	N/A	
<b>Accessibility</b>	N/A	<i>Assessment Score</i>
<b>Product type:</b>		N/A
<b>Extent of Damage:</b>		N/A
<b>Surface Treatment:</b>		N/A
<b>Asbestos type:</b>		N/A
<b>Material Assessment Score:</b>		N/A
<b>Priority Assessment Score:</b>		N/A
<b>Action:</b>	N/A	
<b>Comments:</b>	No access within timber boxing	

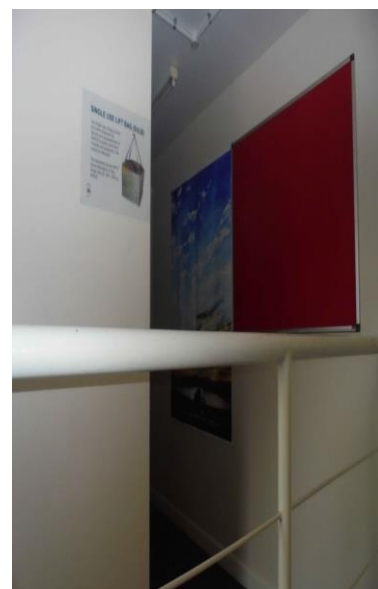
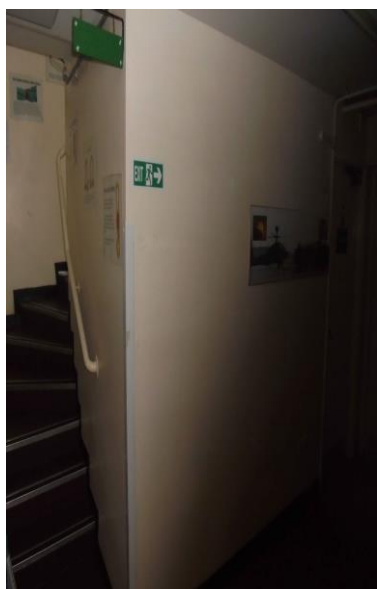
Document Name	Author	Issued by	Revision Number	Issue Date	Page No
2019	Emma Humphreys	Armour AS	0	18/06/2019	56



**Item No: 37**

**Sample No: N/A**

**Location: Corridor, Stairwell and Landing**



<b>Material Description:</b>	Visual Inspection – No Suspect Materials Found	
<b>Identification:</b>	N/A	
<b>Approx. quantity:</b>	N/A	
<b>Accessibility</b>	N/A	<i>Assessment Score</i>
<b>Product type:</b>		N/A
<b>Extent of Damage:</b>		N/A
<b>Surface Treatment:</b>		N/A
<b>Asbestos type:</b>		N/A
<b>Material Assessment Score:</b>		N/A
<b>Priority Assessment Score:</b>		N/A
<b>Action:</b>	N/A	
<b>Comments:</b>	No access under lino flooring	

Document Name	Author	Issued by	Revision Number	Issue Date	Page No
2019	Emma Humphreys	Armour AS	0	18/06/2019	57





**Item No: 38**

**Sample No: N/A**

**Location: Classroom RF4 and Store – First Floor**



<b>Material Description:</b>	Visual Inspection – No Suspect Materials Found	
<b>Identification:</b>	N/A	
<b>Approx. quantity:</b>	N/A	
<b>Accessibility</b>	N/A	<i>Assessment Score</i>
<b>Product type:</b>		N/A
<b>Extent of Damage:</b>		N/A
<b>Surface Treatment:</b>		N/A
<b>Asbestos type:</b>		N/A
<b>Material Assessment Score:</b>		N/A
<b>Priority Assessment Score:</b>		N/A
<b>Action:</b>	N/A	
<b>Comments:</b>	Non-Asbestos sink pad in store	

Document Name	Author	Issued by	Revision Number	Issue Date	Page No
2019	Emma Humphreys	Armour AS	0	18/06/2019	58



**Item No: 39**

**Sample No: N/A**

**Location: Loft Space Above Classroom RF4**



<b>Material Description:</b>	Visual Inspection – No Suspect Materials Found	
<b>Identification:</b>	N/A	
<b>Approx. quantity:</b>	N/A	
<b>Accessibility</b>	N/A	<i>Assessment Score</i>
<b>Product type:</b>		N/A
<b>Extent of Damage:</b>		N/A
<b>Surface Treatment:</b>		N/A
<b>Asbestos type:</b>		N/A
<b>Material Assessment Score:</b>		N/A
<b>Priority Assessment Score:</b>		N/A
<b>Action:</b>	N/A	
<b>Comments:</b>	N/A	

Document Name	Author	Issued by	Revision Number	Issue Date	Page No
2019	Emma Humphreys	Armour AS	0	18/06/2019	59

**Item No: 40****Sample No: N/A****Location: Offices x 2 – First Floor**

<b>Material Description:</b>	Visual Inspection – No Suspect Materials Found	
<b>Identification:</b>	N/A	
<b>Approx. quantity:</b>	N/A	
<b>Accessibility</b>	N/A	<i>Assessment Score</i>
<b>Product type:</b>		N/A
<b>Extent of Damage:</b>		N/A
<b>Surface Treatment:</b>		N/A
<b>Asbestos type:</b>		N/A
<b>Material Assessment Score:</b>		N/A
<b>Priority Assessment Score:</b>		N/A
<b>Action:</b>	N/A	
<b>Comments:</b>	N/A	

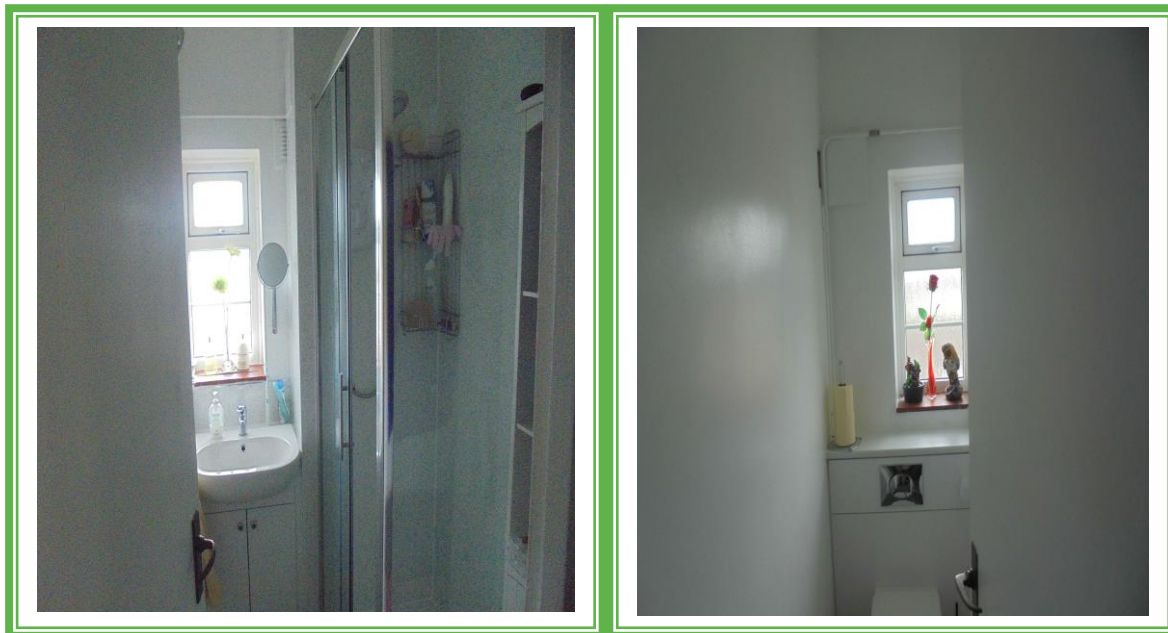
Document Name	Author	Issued by	Revision Number	Issue Date	Page No
2019	Emma Humphreys	Armour AS	0	18/06/2019	60

**Item No: 42****Sample No: N/A****Location: Store and Under Steps Store**

<b>Material Description:</b>	Visual Inspection – No Suspect Materials Found	
<b>Identification:</b>	N/A	
<b>Approx. quantity:</b>	N/A	
<b>Accessibility</b>	N/A	<i>Assessment Score</i>
<b>Product type:</b>		N/A
<b>Extent of Damage:</b>		N/A
<b>Surface Treatment:</b>		N/A
<b>Asbestos type:</b>		N/A
<b>Material Assessment Score:</b>		N/A
<b>Priority Assessment Score:</b>		N/A
<b>Action:</b>	N/A	
<b>Comments:</b>	N/A	

Document Name	Author	Issued by	Revision Number	Issue Date	Page No
2019	Emma Humphreys	Armour AS	0	18/06/2019	61



**Item No: 48****Sample No: N/A****Location: Shower Room/WC**

<b>Material Description:</b>	Visual Inspection – No Suspect Materials Found	
<b>Identification:</b>	N/A	
<b>Approx. quantity:</b>	N/A	
<b>Accessibility</b>	N/A	<i>Assessment Score</i>
<b>Product type:</b>		N/A
<b>Extent of Damage:</b>		N/A
<b>Surface Treatment:</b>		N/A
<b>Asbestos type:</b>		N/A
<b>Material Assessment Score:</b>		N/A
<b>Priority Assessment Score:</b>		N/A
<b>Action:</b>	N/A	
<b>Comments:</b>	N/A	

Document Name	Author	Issued by	Revision Number	Issue Date	Page No
2019	Emma Humphreys	Armour AS	0	18/06/2019	62





**Item No: 49**

**Sample No: N/A**

**Location: Hallway and Cupboard**



<b>Material Description:</b>	Visual Inspection – No Suspect Materials Found	
<b>Identification:</b>	N/A	
<b>Approx. quantity:</b>	N/A	
<b>Accessibility</b>	N/A	<i>Assessment Score</i>
<b>Product type:</b>		N/A
<b>Extent of Damage:</b>		N/A
<b>Surface Treatment:</b>		N/A
<b>Asbestos type:</b>		N/A
<b>Material Assessment Score:</b>		N/A
<b>Priority Assessment Score:</b>		N/A
<b>Action:</b>	N/A	
<b>Comments:</b>	No access under fixed carpet	

Document Name	Author	Issued by	Revision Number	Issue Date	Page No
2019	Emma Humphreys	Armour AS	0	18/06/2019	63

**Item No: 50****Sample No: N/A****Location: Stairwell and Cupboard**

<b>Material Description:</b>	Visual Inspection – No Suspect Materials Found	
<b>Identification:</b>	N/A	
<b>Approx. quantity:</b>	N/A	
<b>Accessibility</b>	N/A	<i>Assessment Score</i>
<b>Product type:</b>		N/A
<b>Extent of Damage:</b>		N/A
<b>Surface Treatment:</b>		N/A
<b>Asbestos type:</b>		N/A
<b>Material Assessment Score:</b>		N/A
<b>Priority Assessment Score:</b>		N/A
<b>Action:</b>	N/A	
<b>Comments:</b>	Modern water heater in cupboard	

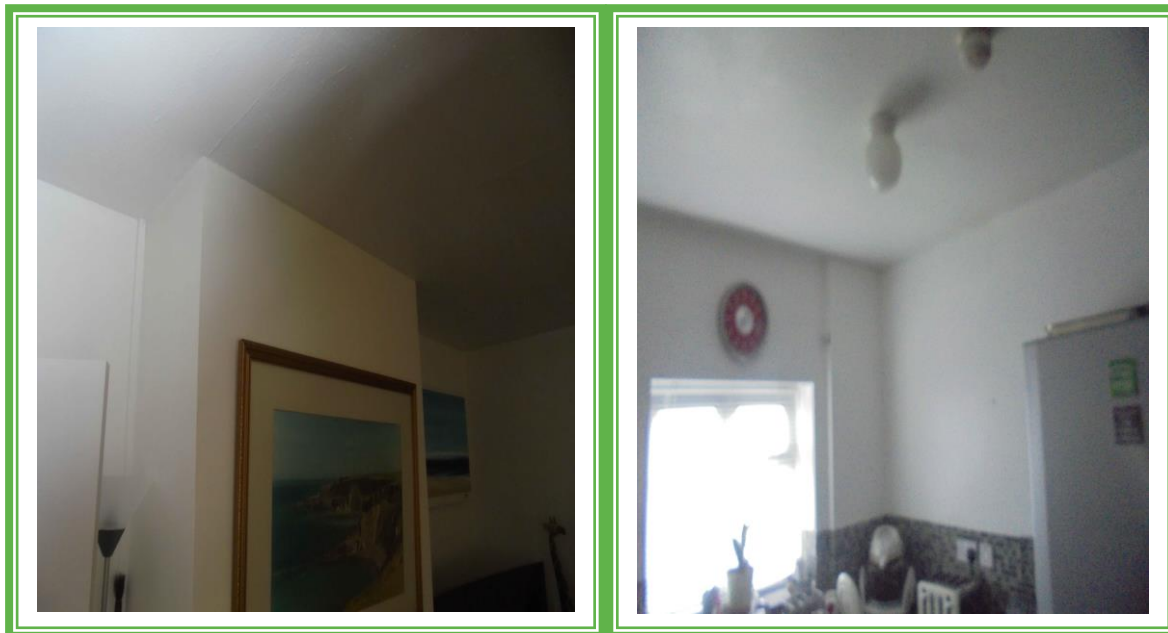
Document Name	Author	Issued by	Revision Number	Issue Date	Page No
2019	Emma Humphreys	Armour AS	0	18/06/2019	64



**Item No: 54**

**Sample No: N/A**

**Location: Kitchen and Dining Room – Second Floor**



<b>Material Description:</b>	Visual Inspection – No Suspect Materials Found	
<b>Identification:</b>	N/A	
<b>Approx. quantity:</b>	N/A	
<b>Accessibility</b>	N/A	<i>Assessment Score</i>
<b>Product type:</b>		N/A
<b>Extent of Damage:</b>		N/A
<b>Surface Treatment:</b>		N/A
<b>Asbestos type:</b>		N/A
<b>Material Assessment Score:</b>		N/A
<b>Priority Assessment Score:</b>		N/A
<b>Action:</b>	N/A	
<b>Comments:</b>	No access under fixed carpet or ceramic floor tiles. Non-Asbestos paint finish to ceiling	

Document Name	Author	Issued by	Revision Number	Issue Date	Page No
2019	Emma Humphreys	Armour AS	0	18/06/2019	65



**Item No: 55**

**Sample No: DK/15**

**Location: Servery – First Floor**



<b>Material Description:</b>	Sink Pad	
<b>Identification:</b>	Sampled – No Asbestos Detected	
<b>Approx. quantity:</b>	X 1 Sink	
<b>Accessibility</b>	N/A	<i>Assessment Score</i>
<b>Product type:</b>		N/A
<b>Extent of Damage:</b>		N/A
<b>Surface Treatment:</b>		N/A
<b>Asbestos type:</b>		N/A
<b>Material Assessment Score:</b>		N/A
<b>Priority Assessment Score:</b>		N/A
<b>Action:</b>	N/A	
<b>Comments:</b>	Non-Asbestos fiberboard ceiling panels	

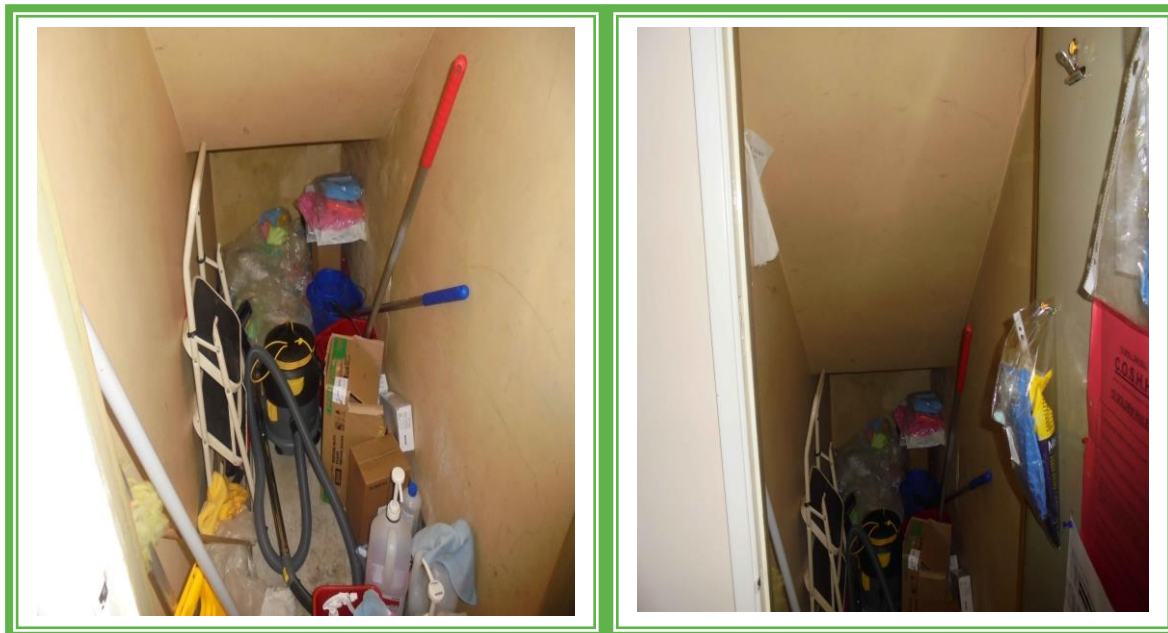
Document Name	Author	Issued by	Revision Number	Issue Date	Page No
2019	Emma Humphreys	Armour AS	0	18/06/2019	66



**Item No: 58**

**Sample No: N/A**

**Location: Cleaners Cupboard**



<b>Material Description:</b>	Visual Inspection – No Suspect Materials Found	
<b>Identification:</b>	N/A	
<b>Approx. quantity:</b>	N/A	
<b>Accessibility</b>	N/A	<i>Assessment Score</i>
<b>Product type:</b>		N/A
<b>Extent of Damage:</b>		N/A
<b>Surface Treatment:</b>		N/A
<b>Asbestos type:</b>		N/A
<b>Material Assessment Score:</b>		N/A
<b>Priority Assessment Score:</b>		N/A
<b>Action:</b>	N/A	
<b>Comments:</b>	N/A	

Document Name	Author	Issued by	Revision Number	Issue Date	Page No
2019	Emma Humphreys	Armour AS	0	18/06/2019	67





**Item No: 59**

**Sample No: N/A**

**Location: Electrics Cupboard – Ground Floor**



<b>Material Description:</b>	Visual Inspection – No Suspect Materials Found	
<b>Identification:</b>	N/A	
<b>Approx. quantity:</b>	N/A	
<b>Accessibility</b>	N/A	<i>Assessment Score</i>
<b>Product type:</b>		N/A
<b>Extent of Damage:</b>		N/A
<b>Surface Treatment:</b>		N/A
<b>Asbestos type:</b>		N/A
<b>Material Assessment Score:</b>		N/A
<b>Priority Assessment Score:</b>		N/A
<b>Action:</b>	N/A	
<b>Comments:</b>	Modern Electrics	

Document Name	Author	Issued by	Revision Number	Issue Date	Page No
2019	Emma Humphreys	Armour AS	0	18/06/2019	68



**Item No: 60**

**Sample No: N/A**

**Location: Store – Ground Floor**



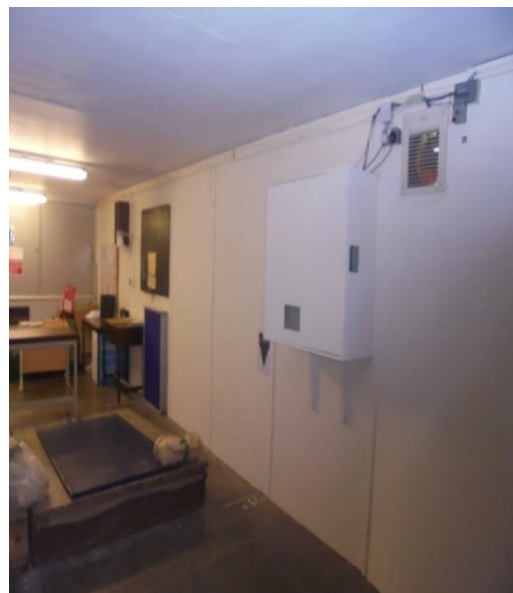
<b>Material Description:</b>	Visual Inspection – No Suspect Materials Found	
<b>Identification:</b>	N/A	
<b>Approx. quantity:</b>	N/A	
<b>Accessibility</b>	N/A	<i>Assessment Score</i>
<b>Product type:</b>		N/A
<b>Extent of Damage:</b>		N/A
<b>Surface Treatment:</b>		N/A
<b>Asbestos type:</b>		N/A
<b>Material Assessment Score:</b>		N/A
<b>Priority Assessment Score:</b>		N/A
<b>Action:</b>	N/A	
<b>Comments:</b>	N/A	

Document Name	Author	Issued by	Revision Number	Issue Date	Page No
2019	Emma Humphreys	Armour AS	0	18/06/2019	69

**Item No: 61****Sample No: N/A****Location: Store – Ground Floor**

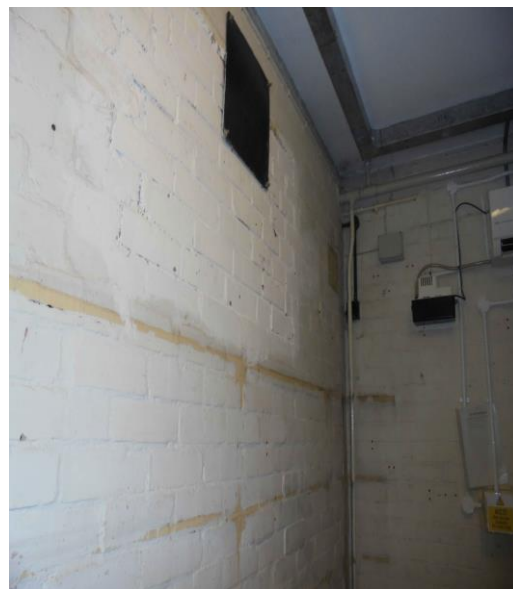
<b>Material Description:</b>	Visual Inspection – No Suspect Materials Found	
<b>Identification:</b>	N/A	
<b>Approx. quantity:</b>	N/A	
<b>Accessibility</b>	N/A	<i>Assessment Score</i>
<b>Product type:</b>		N/A
<b>Extent of Damage:</b>		N/A
<b>Surface Treatment:</b>		N/A
<b>Asbestos type:</b>		N/A
<b>Material Assessment Score:</b>		N/A
<b>Priority Assessment Score:</b>		N/A
<b>Action:</b>	N/A	
<b>Comments:</b>	No access under fixed carpet	

Document Name	Author	Issued by	Revision Number	Issue Date	Page No
2019	Emma Humphreys	Armour AS	0	18/06/2019	70

**Item No: 62****Sample No: N/A****Location: Shooting Range – Ground Floor**

<b>Material Description:</b>	Visual Inspection – No Suspect Materials Found	
<b>Identification:</b>	N/A	
<b>Approx. quantity:</b>	N/A	
<b>Accessibility</b>	N/A	<i>Assessment Score</i>
<b>Product type:</b>		N/A
<b>Extent of Damage:</b>		N/A
<b>Surface Treatment:</b>		N/A
<b>Asbestos type:</b>		N/A
<b>Material Assessment Score:</b>		N/A
<b>Priority Assessment Score:</b>		N/A
<b>Action:</b>	N/A	
<b>Comments:</b>	Non-Asbestos fiberboard wall panels. Modern electrics in cupboard	

Document Name	Author	Issued by	Revision Number	Issue Date	Page No
2019	Emma Humphreys	Armour AS	0	18/06/2019	71

**Item No: 64****Sample No: N/A****Location: Server Room – Ground Floor**

<b>Material Description:</b>	Visual Inspection – No Suspect Materials Found	
<b>Identification:</b>	N/A	
<b>Approx. quantity:</b>	N/A	
<b>Accessibility</b>	N/A	<i>Assessment Score</i>
<b>Product type:</b>		N/A
<b>Extent of Damage:</b>		N/A
<b>Surface Treatment:</b>		N/A
<b>Asbestos type:</b>		N/A
<b>Material Assessment Score:</b>		N/A
<b>Priority Assessment Score:</b>		N/A
<b>Action:</b>	N/A	
<b>Comments:</b>	Modern Electrics	

Document Name	Author	Issued by	Revision Number	Issue Date	Page No
2019	Emma Humphreys	Armour AS	0	18/06/2019	72





**Item No: 67**

**Sample No: N/A**

**Location: Silver store – Ground Floor**



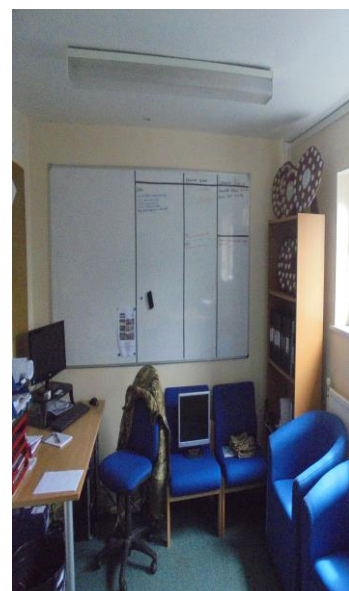
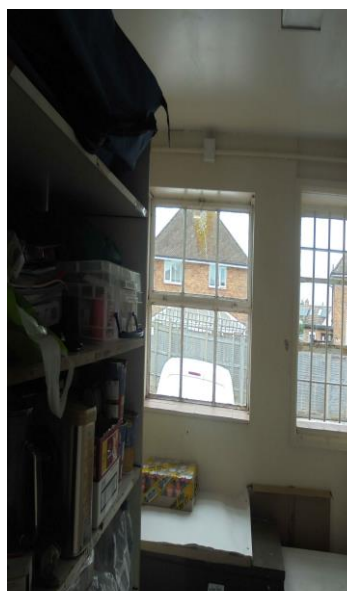
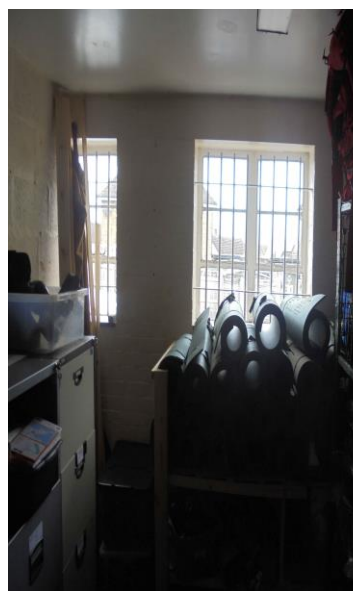
<b>Material Description:</b>	Visual Inspection – No Suspect Materials Found	
<b>Identification:</b>	N/A	
<b>Approx. quantity:</b>	N/A	
<b>Accessibility</b>	N/A	<i>Assessment Score</i>
<b>Product type:</b>		N/A
<b>Extent of Damage:</b>		N/A
<b>Surface Treatment:</b>		N/A
<b>Asbestos type:</b>		N/A
<b>Material Assessment Score:</b>		N/A
<b>Priority Assessment Score:</b>		N/A
<b>Action:</b>	N/A	
<b>Comments:</b>	N/A	

Document Name	Author	Issued by	Revision Number	Issue Date	Page No
2019	Emma Humphreys	Armour AS	0	18/06/2019	73

**Item No: 68****Sample No: N/A****Location: Cadet Classroom – Ground Floor**

<b>Material Description:</b>	Visual Inspection – No Suspect Materials Found	
<b>Identification:</b>	N/A	
<b>Approx. quantity:</b>	N/A	
<b>Accessibility</b>	N/A	<i>Assessment Score</i>
<b>Product type:</b>		N/A
<b>Extent of Damage:</b>		N/A
<b>Surface Treatment:</b>		N/A
<b>Asbestos type:</b>		N/A
<b>Material Assessment Score:</b>		N/A
<b>Priority Assessment Score:</b>		N/A
<b>Action:</b>	N/A	
<b>Comments:</b>	N/A	

Document Name	Author	Issued by	Revision Number	Issue Date	Page No
2019	Emma Humphreys	Armour AS	0	18/06/2019	74

**Item No: 69****Sample No: N/A****Location: Offices x 3 – Ground Floor**

<b>Material Description:</b>	Visual Inspection – No Suspect Materials Found	
<b>Identification:</b>	N/A	
<b>Approx. quantity:</b>	N/A	
<b>Accessibility</b>	N/A	<i>Assessment Score</i>
<b>Product type:</b>		N/A
<b>Extent of Damage:</b>		N/A
<b>Surface Treatment:</b>		N/A
<b>Asbestos type:</b>		N/A
<b>Material Assessment Score:</b>		N/A
<b>Priority Assessment Score:</b>		N/A
<b>Action:</b>	N/A	
<b>Comments:</b>	N/A	

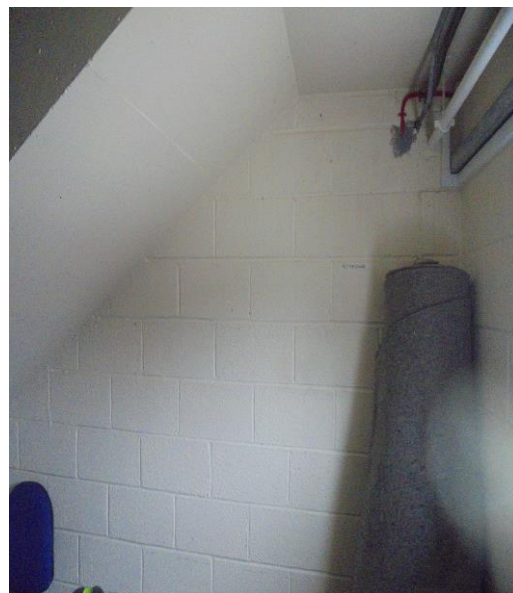
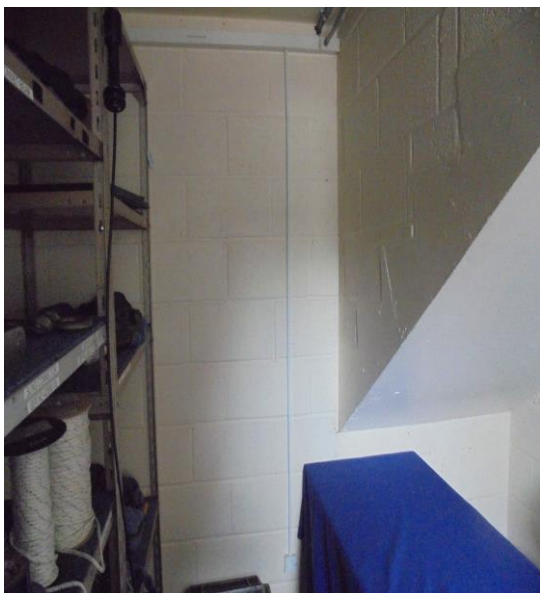
Document Name	Author	Issued by	Revision Number	Issue Date	Page No
2019	Emma Humphreys	Armour AS	0	18/06/2019	75



**Item No: 70**

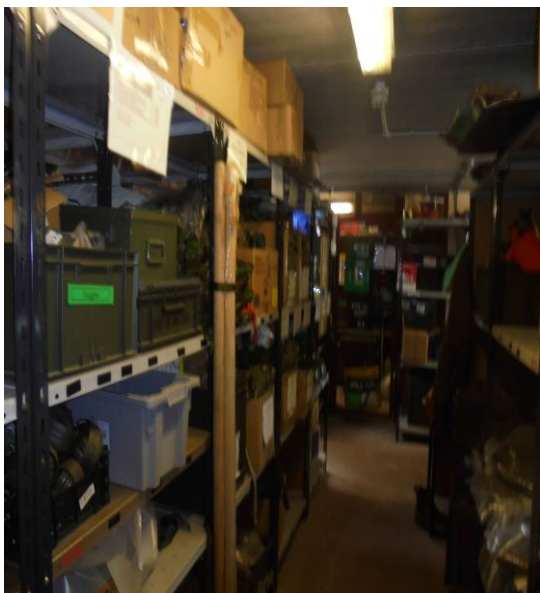
**Sample No: N/A**

**Location: Hustle Store**



<b>Material Description:</b>	Visual Inspection – No Suspect Materials Found	
<b>Identification:</b>	N/A	
<b>Approx. quantity:</b>	N/A	
<b>Accessibility</b>	N/A	<i>Assessment Score</i>
<b>Product type:</b>		N/A
<b>Extent of Damage:</b>		N/A
<b>Surface Treatment:</b>		N/A
<b>Asbestos type:</b>		N/A
<b>Material Assessment Score:</b>		N/A
<b>Priority Assessment Score:</b>		N/A
<b>Action:</b>	N/A	
<b>Comments:</b>	N/A	

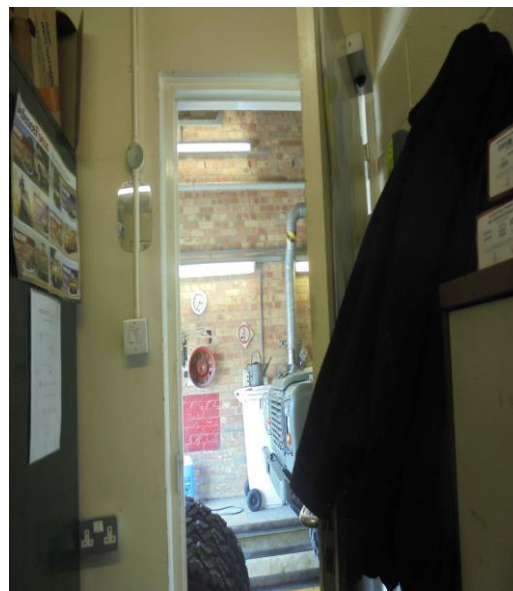
Document Name	Author	Issued by	Revision Number	Issue Date	Page No
2019	Emma Humphreys	Armour AS	0	18/06/2019	76

**Item No: 71****Sample No: N/A****Location: Stores and Office**

<b>Material Description:</b>	Visual Inspection – No Suspect Materials Found	
<b>Identification:</b>	N/A	
<b>Approx. quantity:</b>	N/A	
<b>Accessibility</b>	N/A	<i>Assessment Score</i>
<b>Product type:</b>		N/A
<b>Extent of Damage:</b>		N/A
<b>Surface Treatment:</b>		N/A
<b>Asbestos type:</b>		N/A
<b>Material Assessment Score:</b>		N/A
<b>Priority Assessment Score:</b>		N/A
<b>Action:</b>	N/A	
<b>Comments:</b>	Limited access to inspect due to stored items	

Document Name	Author	Issued by	Revision Number	Issue Date	Page No
2019	Emma Humphreys	Armour AS	0	18/06/2019	77



**Item No: 72****Sample No: DK/16****Location: Garage and Office R13**

<b>Material Description:</b>	Insulation board ceiling	
<b>Identification:</b>	Sampled – No Asbestos Detected	
<b>Approx. quantity:</b>	9M2	
<b>Accessibility</b>	N/A	<i>Assessment Score</i>
<b>Product type:</b>		N/A
<b>Extent of Damage:</b>		N/A
<b>Surface Treatment:</b>		N/A
<b>Asbestos type:</b>		N/A
<b>Material Assessment Score:</b>		N/A
<b>Priority Assessment Score:</b>		N/A
<b>Action:</b>	N/A	
<b>Comments:</b>	N/A	

Document Name	Author	Issued by	Revision Number	Issue Date	Page No
2019	Emma Humphreys	Armour AS	0	18/06/2019	78



**Item No: 73**

**Sample No: N/A**

**Location: Garages – MT Workshop**



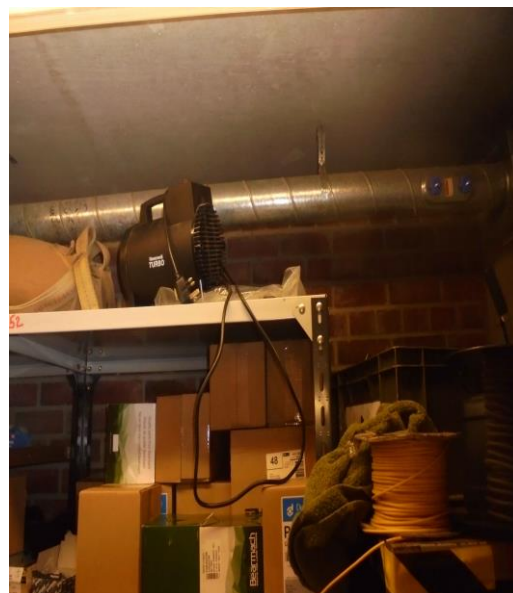
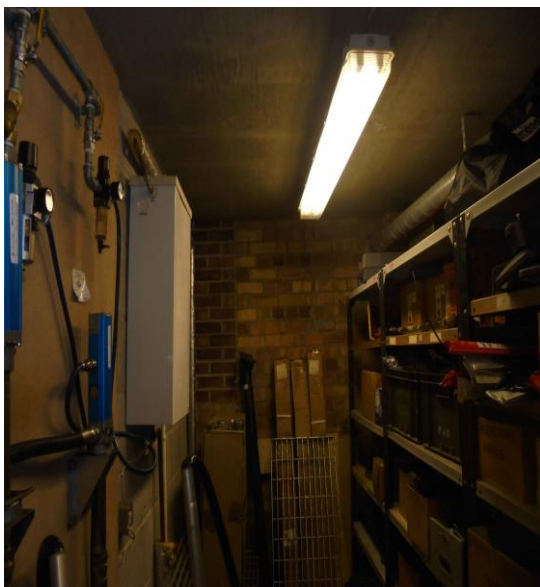
<b>Material Description:</b>	Insulation board boxing	
<b>Identification:</b>	As Per Sample DK/16 – No Asbestos Detected	
<b>Approx. quantity:</b>	6LM	
<b>Accessibility</b>	N/A	<i>Assessment Score</i>
<b>Product type:</b>		N/A
<b>Extent of Damage:</b>		N/A
<b>Surface Treatment:</b>		N/A
<b>Asbestos type:</b>		N/A
<b>Material Assessment Score:</b>		N/A
<b>Priority Assessment Score:</b>		N/A
<b>Action:</b>	N/A	
<b>Comments:</b>	N/A	

Document Name	Author	Issued by	Revision Number	Issue Date	Page No
2019	Emma Humphreys	Armour AS	0	18/06/2019	79

**Item No: 74****Sample No: DK/17****Location: Garages – MT Store**

<b>Material Description:</b>	Insulation board bulkhead panels	
<b>Identification:</b>	Sampled – No Asbestos Detected	
<b>Approx. quantity:</b>	8LM	
<b>Accessibility</b>	N/A	<i>Assessment Score</i>
<b>Product type:</b>		N/A
<b>Extent of Damage:</b>		N/A
<b>Surface Treatment:</b>		N/A
<b>Asbestos type:</b>		N/A
<b>Material Assessment Score:</b>		N/A
<b>Priority Assessment Score:</b>		N/A
<b>Action:</b>	N/A	
<b>Comments:</b>	N/A	

Document Name	Author	Issued by	Revision Number	Issue Date	Page No
2019	Emma Humphreys	Armour AS	0	18/06/2019	80

**Item No: 75****Sample No: N/A****Location: Garages and Store R12**

<b>Material Description:</b>	Visual Inspection – No Suspect Materials Found	
<b>Identification:</b>	N/A	
<b>Approx. quantity:</b>	N/A	
<b>Accessibility</b>	N/A	<i>Assessment Score</i>
<b>Product type:</b>		N/A
<b>Extent of Damage:</b>		N/A
<b>Surface Treatment:</b>		N/A
<b>Asbestos type:</b>		N/A
<b>Material Assessment Score:</b>		N/A
<b>Priority Assessment Score:</b>		N/A
<b>Action:</b>	N/A	
<b>Comments:</b>	N/A	

Document Name	Author	Issued by	Revision Number	Issue Date	Page No
2019	Emma Humphreys	Armour AS	0	18/06/2019	81





**Item No: 76**

**Sample No: N/A**

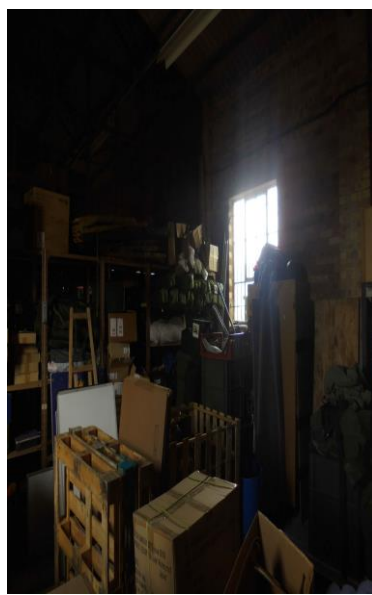
**Location: Garage 1**



<b>Material Description:</b>	Visual Inspection – No Suspect Materials Found	
<b>Identification:</b>	N/A	
<b>Approx. quantity:</b>	N/A	
<b>Accessibility</b>	N/A	<i>Assessment Score</i>
<b>Product type:</b>		N/A
<b>Extent of Damage:</b>		N/A
<b>Surface Treatment:</b>		N/A
<b>Asbestos type:</b>		N/A
<b>Material Assessment Score:</b>		N/A
<b>Priority Assessment Score:</b>		N/A
<b>Action:</b>	N/A	
<b>Comments:</b>	N/A	

Document Name	Author	Issued by	Revision Number	Issue Date	Page No
2019	Emma Humphreys	Armour AS	0	18/06/2019	82



**Item No: 77****Sample No: N/A****Location: Garages 3,4 and 5**

<b>Material Description:</b>	Visual Inspection – No Suspect Materials Found	
<b>Identification:</b>	N/A	
<b>Approx. quantity:</b>	N/A	
<b>Accessibility</b>	N/A	<i>Assessment Score</i>
<b>Product type:</b>		N/A
<b>Extent of Damage:</b>		N/A
<b>Surface Treatment:</b>		N/A
<b>Asbestos type:</b>		N/A
<b>Material Assessment Score:</b>		N/A
<b>Priority Assessment Score:</b>		N/A
<b>Action:</b>	N/A	
<b>Comments:</b>	Limited access to inspect stores due to stored items	

Document Name	Author	Issued by	Revision Number	Issue Date	Page No
2019	Emma Humphreys	Armour AS	0	18/06/2019	83

**Item No: 78****Sample No: DK/18****Location: Cadet Hut - Kitchen**

<b>Material Description:</b>	Remains of sink pad	
<b>Identification:</b>	Sampled – No Asbestos Detected	
<b>Approx. quantity:</b>	X 1 Sink	
<b>Accessibility</b>	N/A	<i>Assessment Score</i>
<b>Product type:</b>		N/A
<b>Extent of Damage:</b>		N/A
<b>Surface Treatment:</b>		N/A
<b>Asbestos type:</b>		N/A
<b>Material Assessment Score:</b>		N/A
<b>Priority Assessment Score:</b>		N/A
<b>Action:</b>	N/A	
<b>Comments:</b>	N/A	

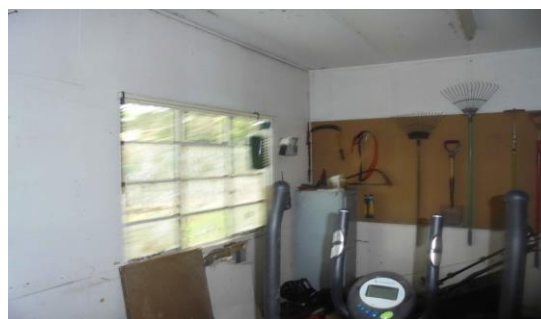
Document Name	Author	Issued by	Revision Number	Issue Date	Page No
2019	Emma Humphreys	Armour AS	0	18/06/2019	84



**Item No: 79**

**Sample No: N/A**

**Location: Cadet Hut – Four Rooms and Corridor**



<b>Material Description:</b>	Visual Inspection – No Suspect Materials Found	
<b>Identification:</b>	N/A	
<b>Approx. quantity:</b>	N/A	
<b>Accessibility</b>	N/A	<i>Assessment Score</i>
<b>Product type:</b>		N/A
<b>Extent of Damage:</b>		N/A
<b>Surface Treatment:</b>		N/A
<b>Asbestos type:</b>		N/A
<b>Material Assessment Score:</b>		N/A
<b>Priority Assessment Score:</b>		N/A
<b>Action:</b>	N/A	
<b>Comments:</b>	Non-Asbestos fiberboard ceiling and wall panels	

Document Name	Author	Issued by	Revision Number	Issue Date	Page No
2019	Emma Humphreys	Armour AS	0	18/06/2019	85



**Item No: 80**

**Sample No: N/A**

**Location: Boiler Room**



<b>Material Description:</b>	Visual Inspection – No Suspect Materials Found	
<b>Identification:</b>	N/A	
<b>Approx. quantity:</b>	N/A	
<b>Accessibility</b>	N/A	<i>Assessment Score</i>
<b>Product type:</b>		N/A
<b>Extent of Damage:</b>		N/A
<b>Surface Treatment:</b>		N/A
<b>Asbestos type:</b>		N/A
<b>Material Assessment Score:</b>		N/A
<b>Priority Assessment Score:</b>		N/A
<b>Action:</b>	N/A	
<b>Comments:</b>	Modern Boiler, Electrics and Pipework	

Document Name	Author	Issued by	Revision Number	Issue Date	Page No
2019	Emma Humphreys	Armour AS	0	18/06/2019	86



**Item No: 81****Sample No: N/A****Location: Ammunition Store**

<b>Material Description:</b>	Visual Inspection – No Suspect Materials Found	
<b>Identification:</b>	N/A	
<b>Approx. quantity:</b>	N/A	
<b>Accessibility</b>	N/A	<i>Assessment Score</i>
<b>Product type:</b>		N/A
<b>Extent of Damage:</b>		N/A
<b>Surface Treatment:</b>		N/A
<b>Asbestos type:</b>		N/A
<b>Material Assessment Score:</b>		N/A
<b>Priority Assessment Score:</b>		N/A
<b>Action:</b>	N/A	
<b>Comments:</b>	N/A	

Document Name	Author	Issued by	Revision Number	Issue Date	Page No
2019	Emma Humphreys	Armour AS	0	18/06/2019	87



## **Section 6: Survey Objectives**

Instructions were received from Sue Morrell of Wessex RFCA to carry out a Management asbestos survey at 675 Army Air Corps, Taunton, TA1 5LJ in accordance with HSG264 and Armour Analytical's quality procedures.

The survey was carried out on 4<sup>th</sup> June 2019 by David Kelly with the objective of facilitating a Management report.

This Management survey is characterised as a 'Visual Inspection Sampling and Identification Survey' in HSG264. This type of survey is used to locate and describe, so far as is reasonably practicable, all asbestos containing materials (ACMs) in the building and will by its nature involve the partial destruction of the building's fabric as access is gained to all areas. A full sampling programme is undertaken to identify possible ACMs and estimate the extent of ACMs reported.

The objective of this survey report is to identify, so far as is reasonably practicable, the location, extent, product type and composition of ACMS within the building to enable the building occupants to put management and remedial procedures in place.

Document Name	Author	Issued by	Revision Number	Issue Date	Page No
2019	Emma Humphreys	Armour AS	0	18/06/2019	88

## **Section 7: Survey Techniques**

Each floor, room and area within the scope was systematically inspected for suspect materials thought or known to contain asbestos and where such materials were encountered their location, extent, and composition were recorded.

Where materials of a similar nature exist, to those previously sampled, and a reasoned argument can be made that their composition is likely to be identical further physical sampling was not undertaken.

Photographs were taken of all sample locations, unless otherwise stated.

The analysis of suspect ACMs was undertaken by a UKAS accredited laboratory using the analytical method detailed in *HSG248, Appendix 2 -Asbestos: The analysts' guide for sampling, analysis and clearance procedures*.

Document Name	Author	Issued by	Revision Number	Issue Date	Page No
2019	Emma Humphreys	Armour AS	0	18/06/2019	89

## **Section 8: Survey Caveat**

This report is based upon a management report inspection of an unfamiliar site. During the course of the survey all reasonable efforts were made to identify the physical presence of materials containing asbestos within the building.

A Management Survey is a non-intrusive survey, meaning that access within the fabric of the building is limited. The survey does not include access to the following areas (unless agreed beforehand with the Client and provisions are put in place):

- Within wall or ceiling construction;
- Under fixed flooring;
- Within non-openable boxings;
- Within live electrics, boilers or machinery;
- Where access/visibility is limited in an area due to stored items, furniture or services;
- Areas where there is no safe access to inspect such as floor ducts, lift shafts and loft spaces with no crawlboards;
- High level areas that are too high to safely inspect.
- Within pipework insulation throughout building as this would affect the integrity of services.

Any intrusive works carried out within the building must first be subject to a Refurbishment Asbestos Survey.

This report will be restricted to the areas that fall within the scope of works for project and will not take into account any area's that do not fall within the scope. Any asbestos that is identified within this report will need to be added to the buildings existing information and should not form the basis for a management survey. This survey will not include priority assessments nor will it include a register.

This survey considered the construction of the building, associated fixtures & fittings and associated structures and in no way should it be considered as a ground investigation report.

Services should be disconnected prior to commencement of a Management survey; however, where plant and/or electrical installations are live or appear to be live then these will not be accessed.

This survey report is not a bill of quantities.

Document Name	Author	Issued by	Revision Number	Issue Date	Page No
2019	Emma Humphreys	Armour AS	0	18/06/2019	90

## **Section 9: Survey Notes**

This report has been written with reference to the various Guidance Notes etc, issued, and current at the date of this report and describes circumstances at the site on the date the investigation took place.

Where similar items exist in the building, only one or two samples have been taken to ascertain the material content. It was assumed that similar products were of the same material.

Any person undertaking work within the buildings should be told of the presence of asbestos. This briefing also applies to any other person associated with the site, including staff, sub-contractors and others.

The drawings in the report are not to scale and are illustrative only to indicate approximate locations. The descriptions used are for location identification purposes.

All the recommendations described in this report are based upon assumptions made after consideration of the type of material, condition of the material, its location, analysis result and type of use the area is thought to be subjected to. However, statutory authorities or others could require amendments based on local knowledge, change in legislation, change in use or indeed other conditions or criteria.

Samples taken from floor tiles (or similar material) may include a bitumen adhesive as part of the sample. It is known that some proprietary brands of bitumen have an asbestos content and this will be included as an integral part of the bulk sample unless otherwise stated.

Document Name	Author	Issued by	Revision Number	Issue Date	Page No
2019	Emma Humphreys	Armour AS	0	18/06/2019	91

## Section 10: Material Assessment Algorithm

Variable	Score	Examples
Installation / Product type	1	Vinyl, 'Bakelite', Cement
	2	Asbestos insulating board, paper, rope
	3	Pipe insulation, spray coating, friable debris
Condition / damage	0	Good
	1	Slight / minor damage
	2	Moderate damage – breakage to surface treatment
	3	Major damage – smashed or exposed material
Surface treatment	0	Non-friable e.g. vinyl
	1	Enclosed insulation, encapsulated AIB
	2	Unsealed AIB, encapsulated insulation
	3	Unsealed insulation or spray coating
Asbestos type	1	Chrysotile
	2	Amosite & other amphiboles
	3	Crocidolite

The scores from each of the four sections are added together to produce a risk score:

Risk score	Risk assessment
<b>10 or more</b>	High risk
<b>7 – 9</b>	Medium risk
<b>5 – 6</b>	Low risk
<b>4 &amp; below</b>	Negligible risk

Document Name	Author	Issued by	Revision Number	Issue Date	Page No
2019	Emma Humphreys	Armour AS	0	18/06/2019	92





## Section 11: Certificates of Bulk Analysis



Our Ref: J168887 FI: 19  
Your Ref: 2481  
Date: 10/06/2019

**ENVIROCHEM**  
Analytical Laboratories Ltd.  
12 The Gardens  
Broadcut, Fareham  
Hampshire  
PO16 8SS



Tel: (01329) 287777  
Fax: (01329) 287755  
www.envirochem.co.uk  
office@envirochem.co.uk

### Asbestos Fibre Identification Report

**Client:** Armour Analytical Services Ltd  
Admirals Yard, Station Road, Patchway, Bristol, BS34 6LR

**Site Address:** 675 Army Air Corps, Taunton, Somerset, TA1 5LJ

**Sampled By:** Armour Analytical Services Ltd

**Date sampled/received:** 7th June 2019

**Date analysed:** 10th June 2019

**Analyst/s:** Graham Bruce-Gardner

**Analysis Location:** Unit 20 Falcons Gate Northavon Business Centre Yate, Bristol, BS37 5NH

### ANALYTICAL PROCEDURE

Fibre identification was carried out in accordance with the documented 'in-house' methods based on the HSE Guidance Note HSG 248. These employed stereo microscopy, polarized microscopy and dispersion staining techniques.

### RESULTS

Sample No.	Sample Ref.	Location	Asbestos Detected	Asbestos Type
DK/01	BS556504	Officer's Lounge - First Floor - Panel to top of fireplace	Yes	Chrysotile
DK/02	BS556505	Officer's Lounge - First Floor - Floor tiles under carpet	Yes	Chrysotile
DK/03	BS556506	Conference Room - First Floor - Textured coating to canopy	No	
DK/04	BS556507	Conference Room - First Floor - Floor tiles under carpet	Yes	Chrysotile

#### NOTES:

1. Sample(s) were examined for the presence of 6 types of asbestos fibre: crocidolite (blue), amosite (brown), chrysotile (white), anthophyllite, actinolite and tremolite.
2. Samples collected by the client are evaluated using information provided by the client. For samples collected by the client the date of receipt is deemed to be the same as the date sampled.
3. Envirochem is a UKAS accredited laboratory for sampling and identification of asbestos containing materials.
4. Comments, observations and opinions are outside the scope of UKAS accreditation.
5. The analytical method in the HSG248 does not quantify the amount of asbestos present, therefore UKAS accreditation does not permit quantification.
6. If, during fibre identification, only 1 or 2 fibres are seen and identified as asbestos, then the term 'trace asbestos identified' is used.

SIGNATURE:

Authorised signatory

PRINT NAME: Graham Bruce-Gardner

Reg. No. 2378228 England. Registered Office: Envirochem, 12 The Gardens, Broadcut, Fareham, Hampshire, PO16 8SS.

Page 1 of 5

Document Name	Author	Issued by	Revision Number	Issue Date	Page No
2019	Emma Humphreys	Armour AS	0	18/06/2019	93



**ARMOUR**  
ANALYTICAL SERVICES



Our Ref: J168887 FI: 19  
Your Ref: 2481  
Date: 10/06/2019

## ENVIROCHEM

Analytical Laboratories Ltd.

12 The Gardens  
Broadcut, Fareham  
Hampshire  
PO16 8SS



Tel: (01329) 287777  
Fax: (01329) 287755  
www.envirochem.co.uk  
office@envirochem.co.uk

### Asbestos Fibre Identification Report

**Client:** Armour Analytical Services Ltd  
Admirals Yard, Station Road, Patchway, Bristol, BS34 6LR  
**Site Address:** 675 Army Air Corps, Taunton, Somerset, TA1 5LJ  
**Sampled By:** Armour Analytical Services Ltd  
**Date sampled/received:** 7th June 2019  
**Date analysed:** 10th June 2019  
**Analyst/s:** Graham Bruce-Gardner  
**Analysis Location:** Unit 20 Falcons Gate Northavon Business Centre Yate, Bristol, BS37 5NH

### ANALYTICAL PROCEDURE

Fibre identification was carried out in accordance with the documented 'in-house' methods based on the HSE Guidance Note HSG 248. These employed stereo microscopy, polarized microscopy and dispersion staining techniques.

### RESULTS

Sample No.	Sample Ref.	Location	Asbestos Detected	Asbestos Type
DK/05	BS556508	Kitchen - First Floor - Sink pad	No	
DK/06	BS556509	Harding Room - First Floor - Floor tiles & adhesive	Yes	Chrysotile
DK/07	BS556510	Corridor - First Floor - Insulation board infill pane to door	Yes	Chrysotile Amosite
DK/08	BS556511	WC, Store & Changing room - Ground Floor - Toilet cisterns	Yes	Amosite

#### NOTES:

1. Sample(s) were examined for the presence of 6 types of asbestos fibres: crocidolite (blue), amosite (brown), chrysotile (white), anthophyllite, actinolite and tremolite.
2. Samples collected by the client are evaluated using information provided by the client. For samples collected by the client the date of receipt is deemed to be the same as the date sampled.
3. Envirochem is a UKAS accredited laboratory for sampling and identification of asbestos containing materials.
4. Comments, observations and opinions are outside the scope of UKAS accreditation.
5. The analytical method in the HSG248 does not quantify the amount of asbestos present, therefore UKAS accreditation does not permit quantification.
6. If, during fibre identification, only 1 or 2 fibres are seen and identified as asbestos, then the term 'trace asbestos identified' is used.

SIGNATURE:

Authorised signatory

PRINT NAME: Graham Bruce-Gardner

Reg. No. 2378228 England. Registered Office: Envirochem, 12 The Gardens, Broadcut, Fareham, Hampshire, PO16 8SS.

Page 2 of 5

Document Name	Author	Issued by	Revision Number	Issue Date	Page No
2019	Emma Humphreys	Armour AS	0	18/06/2019	94



**ARMOUR**  
ANALYTICAL SERVICES



Our Ref: J168887 FI: 19  
Your Ref: 2481  
Date: 10/06/2019

## ENVIROCHEM

Analytical Laboratories Ltd.

12 The Gardens  
Broadcut, Fareham  
Hampshire  
PO16 8SS



Tel: (01329) 287777  
Fax: (01329) 287755  
www.envirochem.co.uk  
office@envirochem.co.uk

### Asbestos Fibre Identification Report

**Client:** Armour Analytical Services Ltd  
Admirals Yard, Station Road, Patchway, Bristol, BS34 6LR

**Site Address:** 675 Army Air Corps, Taunton, Somerset, TA1 5LJ

**Sampled By:** Armour Analytical Services Ltd

**Date sampled/received:** 7th June 2019

**Date analysed:** 10th June 2019

**Analyst/s:** Graham Bruce-Gardner

**Analysis Location:** Unit 20 Falcons Gate Northavon Business Centre Yate, Bristol, BS37 5NH

### ANALYTICAL PROCEDURE

Fibre identification was carried out in accordance with the documented 'in-house' methods based on the HSE Guidance Note HSG 248. These employed stereo microscopy, polarized microscopy and dispersion staining techniques.

### RESULTS

Sample No.	Sample Ref.	Location	Asbestos Detected	Asbestos Type
DK/09	BS556512	WC - Ground Floor - Cement pipework sleeve within wall	Yes	Chrysotile
DK/10	BS556513	Offices x2 - Ground Floor - Floor tiles & Adhesive	Yes	Chrysotile
DK/11	BS556514	Main Hall & Gym (storage) - Floor tiles & Adhesive	Yes	Chrysotile
DK/12	BS556515	External - Cement downpipes	Yes	Chrysotile

#### NOTES:

1. Sample(s) were examined for the presence of 6 types of asbestos fibres: crocidolite (blue), amosite (brown), chrysotile (white), anthophyllite, actinolite and tremolite.
2. Samples collected by the client are evaluated using information provided by the client. For samples collected by the client the date of receipt is deemed to be the same as the date sampled.
3. Envirochem is a UKAS accredited laboratory for sampling and identification of asbestos containing materials.
4. Comments, observations and opinions are outside the scope of UKAS accreditation.
5. The analytical method in the HSG248 does not quantify the amount of asbestos present, therefore UKAS accreditation does not permit quantification.
6. If, during fibre identification, only 1 or 2 fibres are seen and identified as asbestos, then the term 'trace asbestos identified' is used.

SIGNATURE:

Authorised signatory

PRINT NAME: Graham Bruce-Gardner

Reg. No. 2378228 England. Registered Office: Envirochem, 12 The Gardens, Broadcut, Fareham, Hampshire, PO16 8SS.

Page 3 of 5

Document Name	Author	Issued by	Revision Number	Issue Date	Page No
2019	Emma Humphreys	Armour AS	0	18/06/2019	95



**ARMOUR**  
ANALYTICAL SERVICES



Our Ref: J168887 FI: 19  
Your Ref: 2481  
Date: 10/06/2019

## ENVIROCHEM

Analytical Laboratories Ltd.

12 The Gardens  
Broadcut, Fareham  
Hampshire  
PO16 8SS



Tel: (01329) 287777  
Fax: (01329) 287755  
www.envirochem.co.uk  
office@envirochem.co.uk

### Asbestos Fibre Identification Report

**Client:** Armour Analytical Services Ltd  
Admirals Yard, Station Road, Patchway, Bristol, BS34 6LR

**Site Address:** 675 Army Air Corps, Taunton, Somerset, TA1 5LJ

**Sampled By:** Armour Analytical Services Ltd

**Date sampled/received:** 7th June 2019

**Date analysed:** 10th June 2019

**Analyst/s:** Graham Bruce-Gardner

**Analysis Location:** Unit 20 Falcons Gate Northavon Business Centre Yate, Bristol, BS37 5NH

### ANALYTICAL PROCEDURE

Fibre identification was carried out in accordance with the documented 'in-house' methods based on the HSE Guidance Note HSG 248. These employed stereo microscopy, polarized microscopy and dispersion staining techniques.

### RESULTS

Sample No.	Sample Ref.	Location	Asbestos Detected	Asbestos Type
DK/13	BS556516	Bedroom 2 & Cupboard - Cement wall panel	Yes	Chrysotile
DK/14	BS556517	Bedroom 2 & Cupboard - Floor tiles & Adhesive	Yes	Chrysotile
DK/15	BS556518	Serverey - First Floor - Sink pads	No	
DK/16	BS556519	Garages - Office R13 - Insulation board ceiling	No	

#### NOTES:

1. Sample(s) were examined for the presence of 6 types of asbestos fibres: crocidolite (blue), amosite (brown), chrysotile (white), anthophyllite, actinolite and tremolite.
2. Samples collected by the client are evaluated using information provided by the client. For samples collected by the client the date of receipt is deemed to be the same as the date sampled.
3. Envirochem is a UKAS accredited laboratory for sampling and identification of asbestos containing materials.
4. Comments, observations and opinions are outside the scope of UKAS accreditation.
5. The analytical method in the HSG248 does not quantify the amount of asbestos present, therefore UKAS accreditation does not permit quantification.
6. If, during fibre identification, only 1 or 2 fibres are seen and identified as asbestos, then the term 'trace asbestos identified' is used.

SIGNATURE:

Authorised signatory

PRINT NAME: Graham Bruce-Gardner

Reg. No. 2378228 England. Registered Office: Envirochem, 12 The Gardens, Broadcut, Fareham, Hampshire, PO16 8SS.

Page 4 of 5

Document Name	Author	Issued by	Revision Number	Issue Date	Page No
2019	Emma Humphreys	Armour AS	0	18/06/2019	96





**ARMOUR**  
ANALYTICAL SERVICES



Our Ref: J168887 FI: 19  
Your Ref: 2481  
Date: 10/06/2019

## ENVIROCHEM

Analytical Laboratories Ltd.

12 The Gardens  
Broadcut, Fareham  
Hampshire  
PO16 8SS



Tel: (01329) 287777  
Fax: (01329) 287755  
www.envirochem.co.uk  
office@envirochem.co.uk

### Asbestos Fibre Identification Report

**Client:** Armour Analytical Services Ltd  
Admirals Yard, Station Road, Patchway, Bristol, BS34 6LR  
**Site Address:** 675 Army Air Corps, Taunton, Somerset, TA1 5LJ  
**Sampled By:** Armour Analytical Services Ltd  
**Date sampled/received:** 7th June 2019  
**Date analysed:** 10th June 2019  
**Analyst/s:** Graham Bruce-Gardner  
**Analysis Location:** Unit 20 Falcons Gate Northavon Business Centre Yate, Bristol, BS37 5NH

#### ANALYTICAL PROCEDURE

Fibre identification was carried out in accordance with the documented 'in-house' methods based on the HSE Guidance Note HSG 248. These employed stereo microscopy, polarized microscopy and dispersion staining techniques.

#### RESULTS

Sample No.	Sample Ref.	Location	Asbestos Detected	Asbestos Type
DK/17	BS556520	Garages - MT Store - Insulation board bulkhead panels	No	
DK/18	BS556521	Cadet Hut - Kitchen - Remains of Sink pad	No	
DK/19	BS556522	External to Garages - Profiled cement roof sheets	Yes	Chrysotile

#### NOTES:

1. Sample(s) were examined for the presence of 6 types of asbestos fibres: crocidolite (blue), amosite (brown), chrysotile (white), anthophyllite, actinolite and tremolite.
2. Samples collected by the client are evaluated using information provided by the client. For samples collected by the client the date of receipt is deemed to be the same as the date sampled.
3. Envirochem is a UKAS accredited laboratory for sampling and identification of asbestos containing materials.
4. Comments, observations and opinions are outside the scope of UKAS accreditation.
5. The analytical method in the HSG248 does not quantify the amount of asbestos present, therefore UKAS accreditation does not permit quantification.
6. If, during fibre identification, only 1 or 2 fibres are seen and identified as asbestos, then the term 'trace asbestos identified' is used.

SIGNATURE:

Authorised signatory

PRINT NAME: Graham Bruce-Gardner






Reg. No. 2378228 England. Registered Office: Envirochem, 12 The Gardens, Broadcut, Fareham, Hampshire, PO16 8SS.

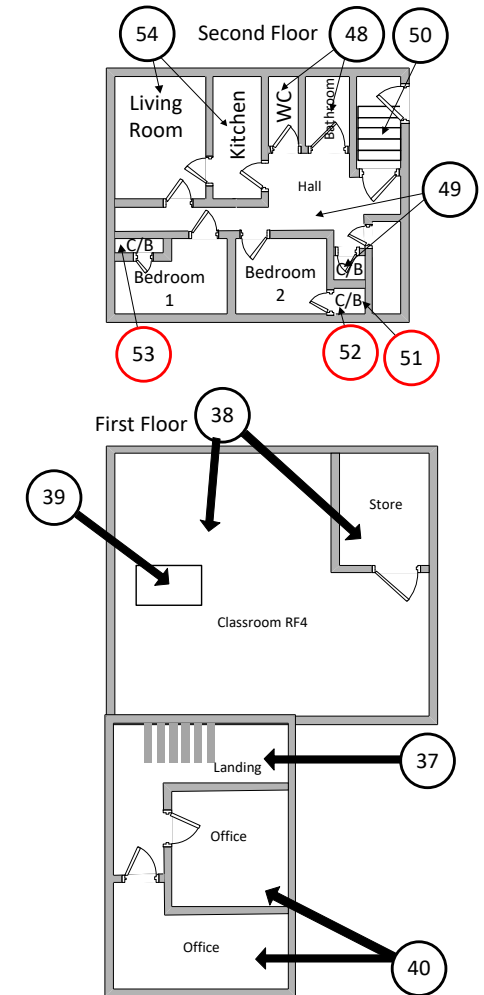
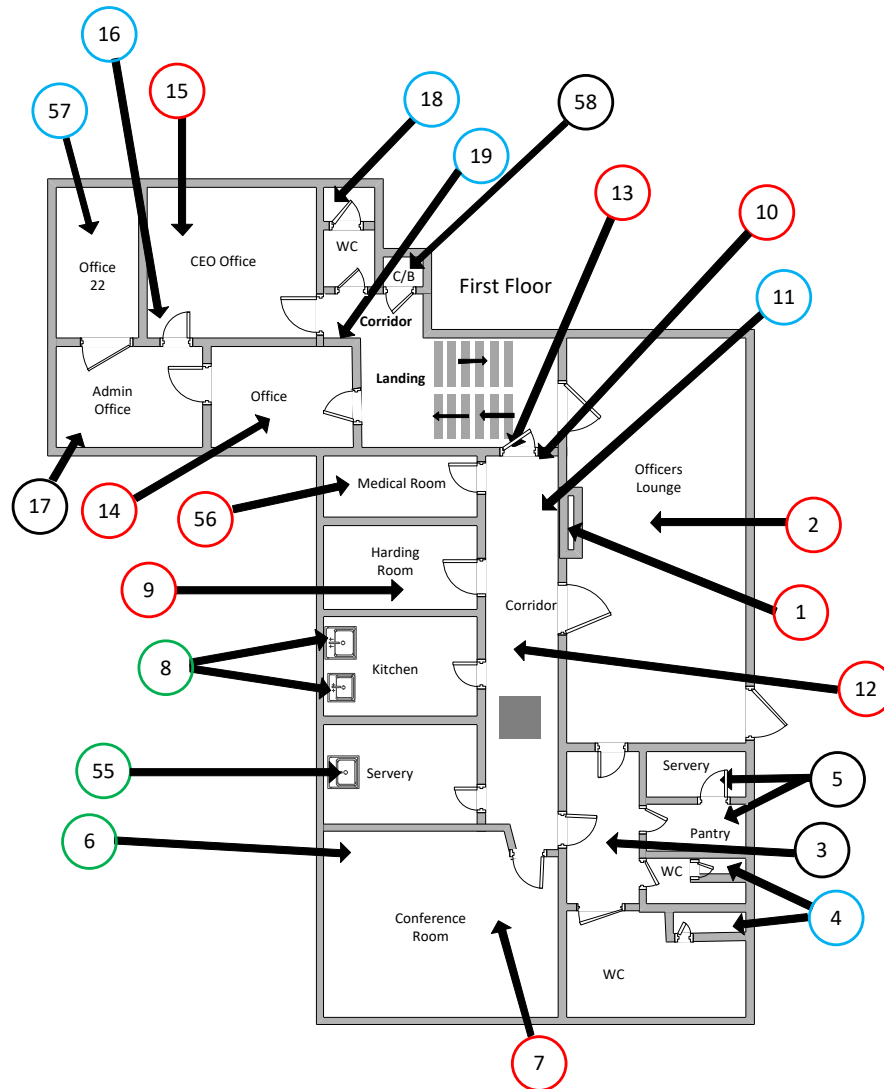
Page 5 of 5

Document Name	Author	Issued by	Revision Number	Issue Date	Page No
2019	Emma Humphreys	Armour AS	0	18/06/2019	97



## Section 12: Site Plan

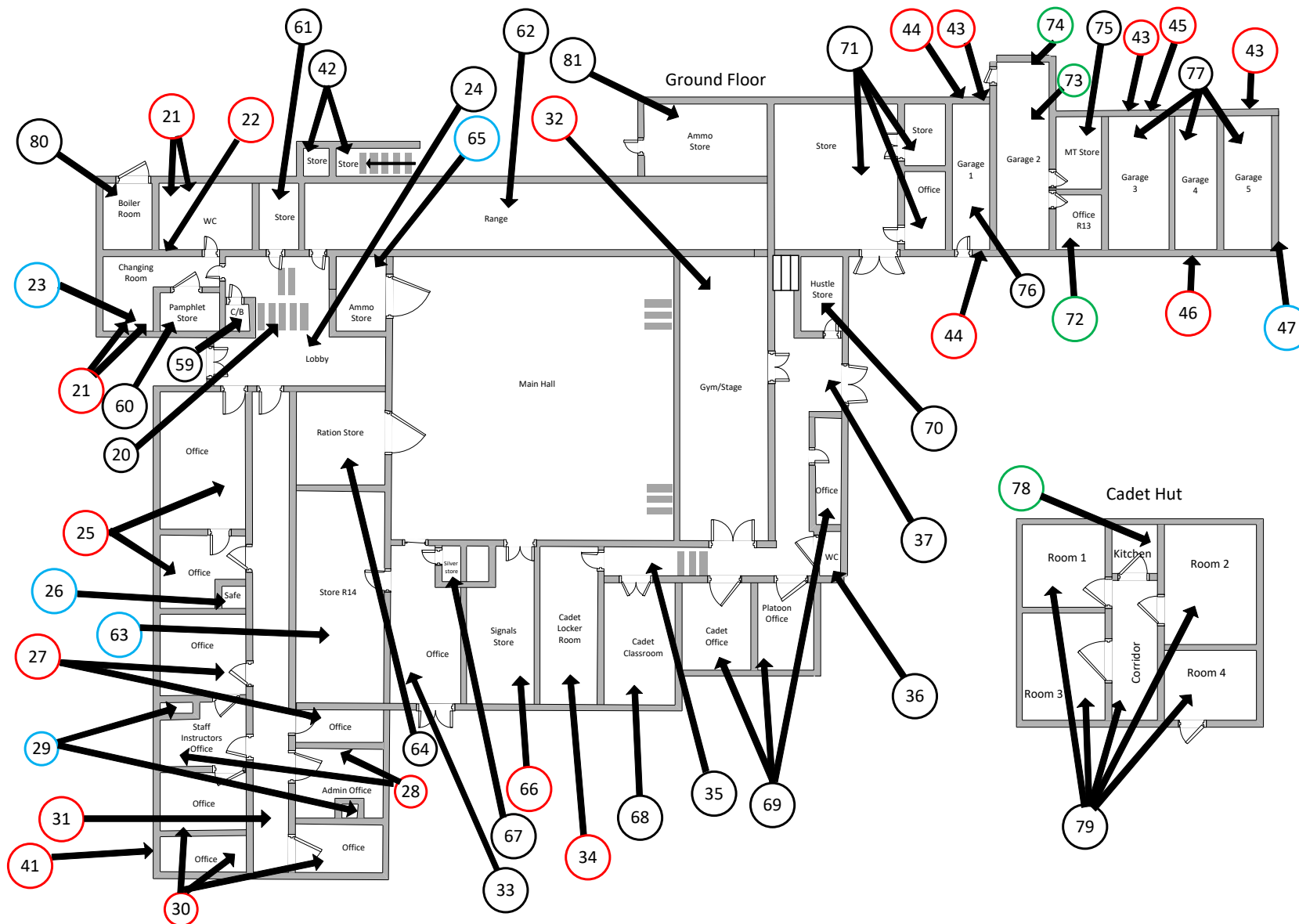
KEY	
	Visual Inspection
	ACM's Detected (Positive Items)
	No ACM's Detected (Negative Items)
	Presumed to Contain ACM's
	No Access



Document Name	Author	Issued by	Revision Number	Issue Date	Page No
2019	Emma Humphreys	Armour AS	0	18/06/2019	98



KEY	
	Visual Inspection
	ACM's Detected (Positive Items)
	No ACM's Detected (Negative Items)
	Presumed to Contain ACM's
	No Access



Document Name	Author	Issued by	Revision Number	Issue Date	Page No
2019	Emma Humphreys	Armour AS	0	18/06/2019	99



**ARMOUR**  
ANALYTICAL SERVICES

**I the surveyor can confirm that this report is accurate to my findings onsite and this survey has been Content checked by myself.**

**Checked by: David Kelly**

**Date: 17/06/2019**

**I the Admin Manager can confirm that this report is accurate to the paperwork received and this survey has been quality checked by myself.**

**Checked by: Emma Humphreys**

**Date: 13.06.2019**

**Report Compiled By**

**Armour Analytical Services Ltd, Admirals Yard, Station Road, Bristol, BS34 6LR**

Document Name	Author	Issued by	Revision Number	Issue Date	Page No
2019	Emma Humphreys	Armour AS	0	18/06/2019	100