

**Project Number A-00370 (3700)**

**Re-Inspection  
Asbestos Survey Report - Revised**

**Marlborough Platoon  
Wiltshire  
SN8 2AJ**



Working in Partnership with Shield Services Group

Document Name	Author	Issued by	Revision Number	Issue Date	Page No
2020	David Kelly	Armour AS	0	8/12/2020	1

## **Contents**

<b>Section</b>	
<b>1</b>	<b>Contact Details</b>
<b>2</b>	<b>Executive Summary</b>
<b>3</b>	<b>Site Description &amp; Survey Information</b>
<b>4</b>	<b>Positive, Presumed or No Access Items</b>
<b>5</b>	<b>Negative Photos Sheets</b>
<b>6</b>	<b>Survey Objectives</b>
<b>7</b>	<b>Survey Notes</b>
<b>8</b>	<b>Material Assessment Algorithm</b>
<b>9</b>	<b>Certificates of Bulk Analysis</b>
<b>10</b>	<b>Site Plan</b>

Document Name	Author	Issued by	Revision Number	Issue Date	Page No
2020	David Kelly	Armour AS	0	8/12/2020	2

## **Section 1: Contact Details**

<b>Client Details:</b>		<b>Instructing Party:</b>	
Wessex RFCA Mount House Mount Street Taunton TA1 3QE		Shield Caxton Business Park Warmley BS30 8XJ	
<b>Contact Name:</b>	Kelvin Walker	<b>Contact Name:</b>	Chloe Smith
<b>Tel:</b> 01823 250116	<b>Fax:</b> N/A	<b>Tel:</b> 01173012650	<b>Fax:</b> N/A

<b>Site Address:</b>		<b>Report Author:</b>	
Marlborough Platoon Wiltshire SN8 2AJ		Armour Analytical Services Admirals Yard Station Road Bristol BS34 6LR	
<b>Contact Name:</b>	Kelvin Walker	<b>Contact Name:</b>	Emma Humphreys
<b>Tel:</b> 01823 250116	<b>Fax:</b> N/A	<b>Mobile:</b> 07468535836	

<b>Lead Surveyor's Name:</b>	<b>Lead Surveyor's Authorising Signature:</b>
David Kelly	

Document Name	Author	Issued by	Revision Number	Issue Date	Page No
2020	David Kelly	Armour AS	0	8/12/2020	3

## **Section 2: Executive Summary**

No samples were taken during this survey.

In addition to the above sampled items, the following items have been either been "Strongly Presumed" To Contain Asbestos or "Presumed" to Contain Asbestos as they were either visually identified in being so, labelled after previously being sampled on prior surveys or not accessible at the time of the survey:

Status	Sample Type	Location
Previously Sampled	Wall Panels - Cement Product	Ground Floor Lobby 001
Previously Sampled	Wall Panels - Cement Product	Ground Floor WC 002
Presumed	Toilet Seat - PVC / Reinforced Plastics	Ground Floor WC 003
Previously Sampled	Wall Panels - Cement Product	Ground Floor WC 004
Presumed	Wrap to Mains Cable - Bituminous Product	Ground Floor Lobby 006
Previously Sampled	Wall Panels - Cement Product	Ground Floor Office 007
Previously Sampled	Wall Panels - Cement Product	Ground Floor Store 008
Presumed	Wrap to Mains Cable - Bituminous Product	External –Main Hut 009
Previously Sampled	Profiled Roof - Cement Product	External – Main Hut 010
Previously Sampled	Profiled Roof - Cement Product	External - Air Cadet Hut 013
Presumed	All - No Access Gained	Air Cadet Hut 014
Previously Sampled	Wall Panels - Cement Product	Ground Floor Store 015

The presence of asbestos in these areas cannot be ascertained at this time. If any works are to be carried out in these areas in the future, then these works should be approached cautiously.

In accordance with current legislation, any suspect materials encountered in these areas are to be assumed to contain asbestos until proven otherwise. This will normally involve cessation of works in the affected area.

Document Name	Author	Issued by	Revision Number	Issue Date	Page No
2020	David Kelly	Armour AS	0	8/12/2020	4

## **Section 3: Site Description & Survey Information**

### **Brief description on the general building construction**

Main Hut - Timber frame construction with a profiled metal roof.  
 2 x Metal Nissan Huts  
 Air Cadet Hut - Timber frame construction with a profiled cement roof.

### **Caveat for no access areas**

All areas accessed.

### **EXTERNAL MATERIALS**

Roof Type	Pitched
Roof Materials	Profiled Metal, Profiled Cement
Soffits	Timber
Fascia	Timber, UPVC
Walls	Timber, Brick, Metal
Verge Under cloaking	N/A
Guttering	Plastic
Downpipes	Plastic
Window/Door frames	UPVC
Other Materials	N/A

### **INTERNAL MATERIALS**

Loft Insulation	N/A
Roof Underlining	N/A
Ceilings	Suspended, Timber, AIB Panels
Walls <i>Internal</i>	Cement, Timber, Plasterboard
Floors	Tiles, Lino, Timber
Doors/Frames	Timber, Metal
Pipework/Insulation	Armaflex, Copper
Boxings	N/A
Boiler Make	N/A
Flue Pipes	N/A
Storage Heaters	Non-Asbestos Heaters
Electrical Boxes/Machinery	Modern
Ducting/Risers	N/A
Stairs	N/A
Lift Shafts	N/A
Other Materials	N/A

Document Name	Author	Issued by	Revision Number	Issue Date	Page No
2020	David Kelly	Armour AS	0	8/12/2020	5

## Section 4: Positive, Presumed or No Access Items

<b>Item No:</b>	<b>1</b>	<b>Sample No:</b>	<b>N/A</b>
<b>Location:</b>	Ground Floor - Lobby 001		



<b>Material Description:</b>	Wall Panels - Cement Product	
<b>Identification:</b>	Previously Sampled - Asbestos Detected	
<b>Approx. quantity:</b>	48 m <sup>2</sup>	
<b>Accessibility</b>	Easy	Assessment Score
<b>Product type:</b>	Cement	1
<b>Extent of Damage:</b>	Slight / minor damage	1
<b>Surface Treatment:</b>	Sealed Cement	0
<b>Asbestos type:</b>	Chrysotile	1
<b>Material Assessment Score:</b>		3
<b>Priority Assessment Score:</b>		Negligible
<b>Action:</b>	Manage	
<b>Comments:</b>	Located to all walls including walls and ceiling in cupboard. Previously sampled ref: 7/10/19 - DK/1	

Document Name	Author	Issued by	Revision Number	Issue Date	Page No
2020	David Kelly	Armour AS	0	8/12/2020	6

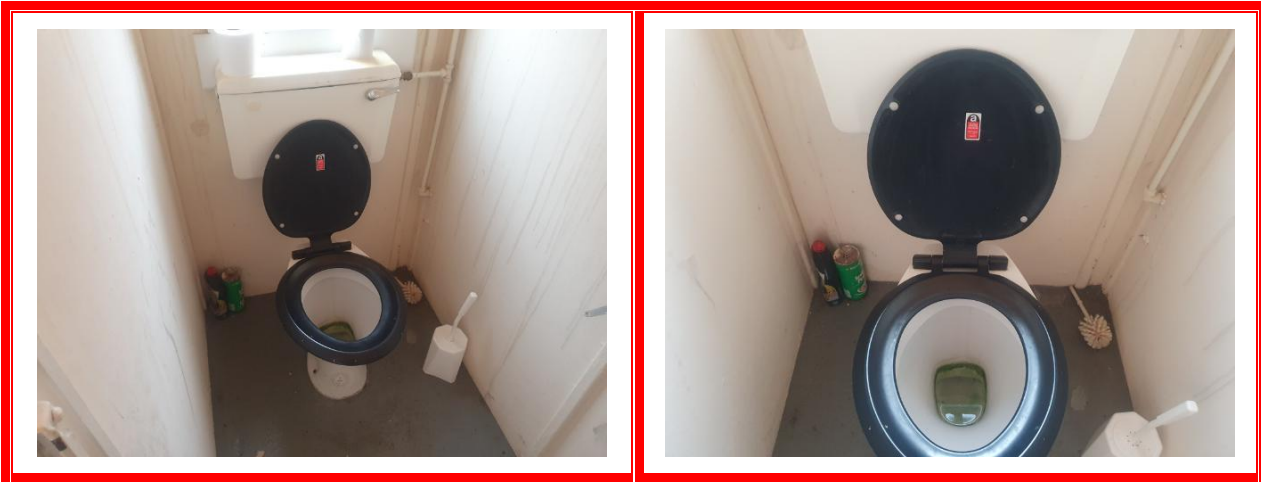
<b>Item No:</b>	<b>2</b>	<b>Sample No:</b>	<b>N/A</b>
<b>Location:</b>	Ground Floor - WC 002		



<b>Material Description:</b>	Wall Panels - Cement Product	
<b>Identification:</b>	Previously Sampled - Asbestos Detected	
<b>Approx. quantity:</b>	50 m <sup>2</sup>	
<b>Accessibility</b>	Easy	<i>Assessment Score</i>
<b>Product type:</b>	Cement	1
<b>Extent of Damage:</b>	Slight / minor damage	1
<b>Surface Treatment:</b>	Sealed Cement	0
<b>Asbestos type:</b>	Chrysotile	1
<b>Material Assessment Score:</b>		3
<b>Priority Assessment Score:</b>		Negligible
<b>Action:</b>	Manage	
<b>Comments:</b>	Located to all walls including partition walls. Previously sampled ref: 7/10/19 - DK/1	

Document Name	Author	Issued by	Revision Number	Issue Date	Page No
2020	David Kelly	Armour AS	0	8/12/2020	7

<b>Item No:</b>	<b>3</b>	<b>Sample No:</b>	<b>N/A</b>
<b>Location:</b>	Ground Floor - WC 003		



<b>Material Description:</b>	Toilet Seat - PVC / Reinforced Plastics	
<b>Identification:</b>	Presumed to Contain Asbestos	
<b>Approx. quantity:</b>	1 no	
<b>Accessibility</b>	Easy	<i>Assessment Score</i>
<b>Product type:</b>	Reinforced Plastic	1
<b>Extent of Damage:</b>	Minor damage	1
<b>Surface Treatment:</b>	Reinforced Plastic	0
<b>Asbestos type:</b>	Chrysotile	1
<b>Material Assessment Score:</b>		3
<b>Priority Assessment Score:</b>		Negligible
<b>Action:</b>	Manage	
<b>Comments:</b>	Not possible to sample as may damage integrity of seat	

Document Name	Author	Issued by	Revision Number	Issue Date	Page No
2020	David Kelly	Armour AS	0	8/12/2020	8



<b>Item No:</b>	<b>4</b>	<b>Sample No:</b>	<b>N/A</b>
<b>Location:</b>	Ground Floor - WC 004		



<b>Material Description:</b>	Wall Panels - Cement Product	
<b>Identification:</b>	Previously Sampled - Asbestos Detected	
<b>Approx. quantity:</b>	19 m <sup>2</sup>	
<b>Accessibility</b>	Easy	<i>Assessment Score</i>
<b>Product type:</b>	Cement	1
<b>Extent of Damage:</b>	Slight / minor damage	1
<b>Surface Treatment:</b>	Sealed Cement	0
<b>Asbestos type:</b>	Chrysotile	1
<b>Material Assessment Score:</b>		3
<b>Priority Assessment Score:</b>		Negligible
<b>Action:</b>	Manage	
<b>Comments:</b>	Located to all walls except for right hand wall as you enter room. Previously sampled ref: 7/10/19 - DK/1	

Document Name	Author	Issued by	Revision Number	Issue Date	Page No
2020	David Kelly	Armour AS	0	8/12/2020	9

<b>Item No:</b>	<b>6</b>	<b>Sample No:</b>	<b>N/A</b>
<b>Location:</b>	Ground Floor - Lobby 006		



<b>Material Description:</b>	Wrap to Mains Cable - Bituminous Product	
<b>Identification:</b>	Presumed to Contain Asbestos	
<b>Approx. quantity:</b>	3 LM	
<b>Accessibility</b>	Easy	<i>Assessment Score</i>
<b>Product type:</b>	Bitumen	1
<b>Extent of Damage:</b>	Minor damage	1
<b>Surface Treatment:</b>	Bitumen	0
<b>Asbestos type:</b>	Chrysotile	1
<b>Material Assessment Score:</b>		3
<b>Priority Assessment Score:</b>		Negligible
<b>Action:</b>	Manage	
<b>Comments:</b>	No access to sample as live	

Document Name	Author	Issued by	Revision Number	Issue Date	Page No
2020	David Kelly	Armour AS	0	8/12/2020	10

<b>Item No:</b>	<b>7</b>	<b>Sample No:</b>	<b>N/A</b>
<b>Location:</b>	Ground Floor - Office 007		



<b>Material Description:</b>	Wall Panels - Cement Product	
<b>Identification:</b>	Previously Sampled - Asbestos Detected	
<b>Approx. quantity:</b>	2 m <sup>2</sup>	
<b>Accessibility</b>	Easy	<i>Assessment Score</i>
<b>Product type:</b>	Cement	1
<b>Extent of Damage:</b>	Slight / minor damage	1
<b>Surface Treatment:</b>	Sealed Cement	0
<b>Asbestos type:</b>	Chrysotile	1
<b>Material Assessment Score:</b>		3
<b>Priority Assessment Score:</b>		Negligible
<b>Action:</b>	Manage	
<b>Comments:</b>	2M2 of cement panels. All other walls are timber. Previously sampled ref: 7/10/19 - DK/1	

Document Name	Author	Issued by	Revision Number	Issue Date	Page No
2020	David Kelly	Armour AS	0	8/12/2020	11

<b>Item No:</b>	<b>8</b>	<b>Sample No:</b>	<b>N/A</b>
<b>Location:</b>	Ground Floor - Store 008		



<b>Material Description:</b>	Wall Panels - Cement Product	
<b>Identification:</b>	Previously Sampled - Asbestos Detected	
<b>Approx. quantity:</b>	10 m <sup>2</sup>	
<b>Accessibility</b>	Easy	<i>Assessment Score</i>
<b>Product type:</b>	Cement	1
<b>Extent of Damage:</b>	Moderate damage	2
<b>Surface Treatment:</b>	Sealed Cement	0
<b>Asbestos type:</b>	Chrysotile	1
<b>Material Assessment Score:</b>		4
<b>Priority Assessment Score:</b>		Negligible
<b>Action:</b>	Encapsulate	
<b>Comments:</b>	To all walls. 3 holes in panels. Previously sampled ref: 7/10/19 - DK/2	

Document Name	Author	Issued by	Revision Number	Issue Date	Page No
2020	David Kelly	Armour AS	0	8/12/2020	12

<b>Item No:</b>	<b>9</b>	<b>Sample No:</b>	<b>N/A</b>
<b>Location:</b>	External – Main Hut 009		



<b>Material Description:</b>	Wrap to Mains Cable - Bituminous Product	
<b>Identification:</b>	Presumed to Contain Asbestos	
<b>Approx. quantity:</b>	1 LM	
<b>Accessibility</b>	Easy	<i>Assessment Score</i>
<b>Product type:</b>	Bitumen	1
<b>Extent of Damage:</b>	Moderate damage	2
<b>Surface Treatment:</b>	Bitumen	0
<b>Asbestos type:</b>	Chrysotile	1
<b>Material Assessment Score:</b>		4
<b>Priority Assessment Score:</b>		Negligible
<b>Action:</b>	Manage	
<b>Comments:</b>	Not possible to sample as live	

Document Name	Author	Issued by	Revision Number	Issue Date	Page No
2020	David Kelly	Armour AS	0	8/12/2020	13

<b>Item No:</b>	<b>10</b>	<b>Sample No:</b>	<b>N/A</b>
<b>Location:</b>	External - Armoury 010		



<b>Material Description:</b>	Profiled Roof - Cement Product	
<b>Identification:</b>	Previously Sampled - Asbestos Detected	
<b>Approx. quantity:</b>	15 m <sup>2</sup>	
<b>Accessibility</b>	Difficult	<i>Assessment Score</i>
<b>Product type:</b>	Cement	1
<b>Extent of Damage:</b>	Slight / minor damage	1
<b>Surface Treatment:</b>	Unsealed Cement	1
<b>Asbestos type:</b>	Chrysotile	1
<b>Material Assessment Score:</b>		4
<b>Priority Assessment Score:</b>		Negligible
<b>Action:</b>	Manage	
<b>Comments:</b>	Previously sampled ref: 7/10/19 - DK/3	

Document Name	Author	Issued by	Revision Number	Issue Date	Page No
2020	David Kelly	Armour AS	0	8/12/2020	14



<b>Item No:</b>	<b>13</b>	<b>Sample No:</b>	<b>N/A</b>
<b>Location:</b>	External - Air Cadet Hut 013		



<b>Material Description:</b>	Profiled Roof - Cement Product	
<b>Identification:</b>	Previously Sampled - Asbestos Detected	
<b>Approx. quantity:</b>	100 m <sup>2</sup>	
<b>Accessibility</b>	Difficult	<i>Assessment Score</i>
<b>Product type:</b>	Cement	1
<b>Extent of Damage:</b>	Slight / minor damage	1
<b>Surface Treatment:</b>	Unsealed Cement	1
<b>Asbestos type:</b>	Chrysotile	1
<b>Material Assessment Score:</b>		4
<b>Priority Assessment Score:</b>		Negligible
<b>Action:</b>	Manage	
<b>Comments:</b>	Previously sampled ref: 7/10/19 - DK/4	

Document Name	Author	Issued by	Revision Number	Issue Date	Page No
2020	David Kelly	Armour AS	0	8/12/2020	15

<b>Item No:</b>	<b>14</b>	<b>Sample No:</b>	<b>DK/01</b>
<b>Location:</b>	Air Cadet Hut – Offices x 2, Classrooms x 3 & Drill Hall 014		



<b>Material Description:</b>	Panels on Ceiling – Insulation Board	
<b>Identification:</b>	Sampled – Asbestos Detected	
<b>Approx. quantity:</b>	10no Panels (5M2)	
<b>Accessibility</b>	Difficult	<i>Assessment Score</i>
<b>Product type:</b>	Insulation Board	2
<b>Extent of Damage:</b>	Minor damage	1
<b>Surface Treatment:</b>	Sealed AIB	1
<b>Asbestos type:</b>	Amosite	2
<b>Material Assessment Score:</b>		6
<b>Priority Assessment Score:</b>		Low
<b>Action:</b>	Manage	
<b>Comments:</b>	Located to ceiling in each room	

Document Name	Author	Issued by	Revision Number	Issue Date	Page No
2020	David Kelly	Armour AS	0	8/12/2020	16



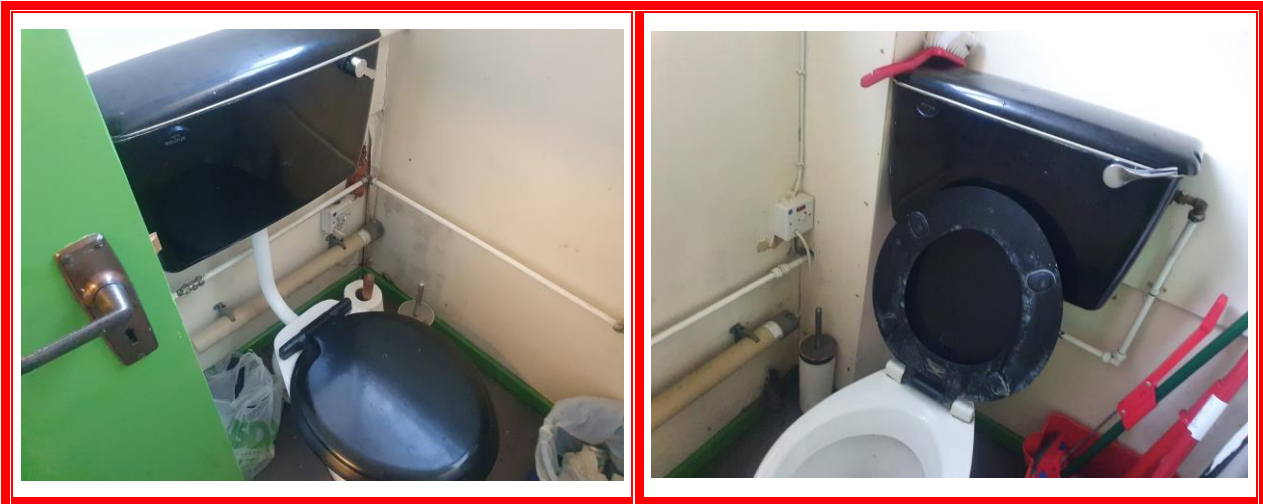
<b>Item No:</b>	<b>15</b>	<b>Sample No:</b>	<b>N/A</b>
<b>Location:</b>	Ground Floor - Store 015		



<b>Material Description:</b>	Wall Panels - Cement Product	
<b>Identification:</b>	Previously Sampled - Asbestos Detected	
<b>Approx. quantity:</b>	40 m <sup>2</sup>	
<b>Accessibility</b>	Easy	<i>Assessment Score</i>
<b>Product type:</b>	Cement	1
<b>Extent of Damage:</b>	Slight / minor damage	1
<b>Surface Treatment:</b>	Sealed Cement	0
<b>Asbestos type:</b>	Chrysotile	1
<b>Material Assessment Score:</b>		3
<b>Priority Assessment Score:</b>		Negligible
<b>Action:</b>	Manage	
<b>Comments:</b>	To all walls. Previous damage encapsulated. Previously sampled ref: 7/10/19 - DK/2	

Document Name	Author	Issued by	Revision Number	Issue Date	Page No
2020	David Kelly	Armour AS	0	8/12/2020	17

<b>Item No:</b>	<b>16</b>	<b>Sample No:</b>	<b>DK/02</b>
<b>Location:</b>	Air Cadet Hut – WC's x 2		



<b>Material Description:</b>	Toilet Cisterns & Seats – Reinforced Plastic	
<b>Identification:</b>	Sampled – Asbestos Detected	
<b>Approx. quantity:</b>	2 no	
<b>Accessibility</b>	Easy	<i>Assessment Score</i>
<b>Product type:</b>	Reinforced Plastic	1
<b>Extent of Damage:</b>	Slight / minor damage	1
<b>Surface Treatment:</b>	Non-Friable	0
<b>Asbestos type:</b>	Amosite	2
<b>Material Assessment Score:</b>		4
<b>Priority Assessment Score:</b>		Negligible
<b>Action:</b>	Manage	
<b>Comments:</b>	N/A	

Document Name	Author	Issued by	Revision Number	Issue Date	Page No
2020	David Kelly	Armour AS	0	8/12/2020	18

## Section 5: Negative Items

<b>Item No:</b>	<b>5</b>	<b>Sample No:</b>	<b>N/A</b>
<b>Location:</b>	Ground Floor - WC 005		



<b>Material Description:</b>	Toilet Seat	
<b>Identification:</b>	N/A	
<b>Approx. quantity:</b>	N/A	
<b>Accessibility</b>	N/A	<i>Assessment Score</i>
<b>Product type:</b>	N/A	N/A
<b>Extent of Damage:</b>	N/A	N/A
<b>Surface Treatment:</b>	N/A	N/A
<b>Asbestos type:</b>	N/A	N/A
<b>Material Assessment Score:</b>		
<b>Priority Assessment Score:</b>		
<b>Action:</b>	N/A	
<b>Comments:</b>	Toilet seat replaced with plastic. Item 5 on previous survey ref 7/10/19	

Document Name	Author	Issued by	Revision Number	Issue Date	Page No
2020	David Kelly	Armour AS	0	8/12/2020	19

<b>Item No:</b>	<b>11</b>	<b>Sample No:</b>	<b>N/A</b>
<b>Location:</b>	Armoury		



<b>Material Description:</b>	No Asbestos Suspected	
<b>Identification:</b>	N/A	
<b>Approx. quantity:</b>	N/A	
<b>Accessibility</b>	N/A	<i>Assessment Score</i>
<b>Product type:</b>	N/A	N/A
<b>Extent of Damage:</b>	N/A	N/A
<b>Surface Treatment:</b>	N/A	N/A
<b>Asbestos type:</b>	N/A	N/A
<b>Material Assessment Score:</b>		
<b>Priority Assessment Score:</b>		
<b>Action:</b>	N/A	
<b>Comments:</b>	Previously a no access area, now accessed. No asbestos suspected.	

Document Name	Author	Issued by	Revision Number	Issue Date	Page No
2020	David Kelly	Armour AS	0	8/12/2020	20

<b>Item No:</b>	<b>12</b>	<b>Sample No:</b>	<b>N/A</b>
<b>Location:</b>	Air Cadet - Store		



<b>Material Description:</b>	Visual Inspection – No Asbestos Found	
<b>Identification:</b>	N/A	
<b>Approx. quantity:</b>	N/A	
<b>Accessibility</b>	N/A	<i>Assessment Score</i>
<b>Product type:</b>	N/A	N/A
<b>Extent of Damage:</b>	N/A	N/A
<b>Surface Treatment:</b>	N/A	N/A
<b>Asbestos type:</b>	N/A	N/A
<b>Material Assessment Score:</b>		
<b>Priority Assessment Score:</b>		
<b>Action:</b>	N/A	
<b>Comments:</b>	Previously un-accessed room. Now accessed and no asbestos found. Limited access into room due to stored items.	

Document Name	Author	Issued by	Revision Number	Issue Date	Page No
2020	David Kelly	Armour AS	0	8/12/2020	21

<b>Item No:</b>	<b>17</b>	<b>Sample No:</b>	<b>N/A</b>
<b>Location:</b>	Air Cadet Hut – Lobby, Cupboard & Kitchen		



<b>Material Description:</b>	Visual Inspection – No Asbestos Found	
<b>Identification:</b>	N/A	
<b>Approx. quantity:</b>	N/A	
<b>Accessibility</b>	N/A	<i>Assessment Score</i>
<b>Product type:</b>	N/A	N/A
<b>Extent of Damage:</b>	N/A	N/A
<b>Surface Treatment:</b>	N/A	N/A
<b>Asbestos type:</b>	N/A	N/A
<b>Material Assessment Score:</b>		
<b>Priority Assessment Score:</b>		
<b>Action:</b>	N/A	
<b>Comments:</b>	Previously un-accessed rooms. Now accessed and no asbestos found. Modern sink pad in kitchen.	

Document Name	Author	Issued by	Revision Number	Issue Date	Page No
2020	David Kelly	Armour AS	0	8/12/2020	22





## **Section 6: Survey Objectives**

Instructions were received from Kelvin Walker of Wessex RFCA to carry out a Re-Inspection asbestos survey at Marlborough Platoon, Wiltshire, SN8 2AJ in accordance with HSG264 and Armour Analytical's quality procedures.

The survey was carried out on 24 November 2020 by David Kelly with the objective of facilitating a Management report.

A survey, with the objective of accessing previously no accessed areas was carried out on 15 October 2021 by David Kelly.

Document Name	Author	Issued by	Revision Number	Issue Date	Page No
2020	David Kelly	Armour AS	0	8/12/2020	23

## **Section 7: Survey Notes**

This report has been written with reference to the various Guidance Notes etc, issued, and current at the date of this report and describes circumstances at the site on the date the investigation took place.

Where similar items exist in the building, only one or two samples may have been taken to ascertain the material content. It was assumed that similar products were of the same material.

Any person undertaking work within the buildings should be told of the presence of asbestos. This briefing also applies to any other person associated with the site, including staff, sub-contractors and others.

The drawings in the report are not to scale and are illustrative only to indicate approximate locations. The descriptions used are for location identification purposes.

All the recommendations described in this report are based upon assumptions made after consideration of the type of material, condition of the material, its location, analysis result and type of use the area is thought to be subjected to. However, statutory authorities or others could require amendments based on local knowledge, change in legislation, change in use or indeed other conditions or criteria.

Samples taken from floor tiles (or similar material) may include a bitumen adhesive as part of the sample. It is known that some proprietary brands of bitumen have an asbestos content and this will be included as an integral part of the bulk sample unless otherwise stated.

Document Name	Author	Issued by	Revision Number	Issue Date	Page No
2020	David Kelly	Armour AS	0	8/12/2020	24



## **Section 8: Material Assessment Algorithm**

Variable	Score	Examples
Installation / Product type	1	Vinyl, 'Bakelite', Cement
	2	Asbestos Insulating Board, Paper, Rope
	3	Pipe Insulation, Spray Coating, Friable Debris
Condition / damage	0	Good
	1	Slight / Minor Damage
	2	Moderate Damage – Breakage To Surface Treatment
	3	Major Damage – Smashed Or Exposed Material
Surface treatment	0	Non-Friable E.G. Vinyl
	1	Enclosed Insulation, Rope Seal, Encapsulated AIB
	2	Unsealed AIB, Encapsulated Insulation
	3	Unsealed Insulation, Spray Coating
Asbestos type	1	Chrysotile
	2	Amosite & Other Amphiboles
	3	Crocidolite

The scores from each of the four sections are added together to produce a risk score:

Risk score	Risk assessment
<b>10 or more</b>	High risk
<b>7 – 9</b>	Medium risk
<b>5 – 6</b>	Low risk
<b>4 &amp; below</b>	Negligible risk

## Section 9: Certificates of Bulk Analysis



Our Ref: J199639 FI: 2  
Your Ref: 3700  
Date: 07/12/2020

**ENVIROCHEM**  
Analytical Laboratories Ltd.  
12 The Gardens  
Broadcut, Fareham  
Hampshire  
PO16 8SS



Tel: (01329) 287777  
Fax: (01329) 287755  
www.envirochem.co.uk  
office@envirochem.co.uk

### Asbestos Fibre Identification Report

**Client:** Armour Analytical Services Ltd  
Admirals Yard, Station Road, Patchway, Bristol, BS34 6LR  
**Site Address:** Marlborough Platoon, Wiltshire, SN8 2AJ  
**Sampled By:** Armour Analytical Services Ltd  
**Date sampled/received:** 4th December 2020  
**Date analysed:** 7th December 2020  
**Analyst/s:** Ella Hiron  
**Analysis Location:** 12 The Gardens, Broadcut, Fareham, Hampshire, PO16 8SS

### ANALYTICAL PROCEDURE

Fibre identification was carried out in accordance with the documented 'in-house' method (2.01) based on the HSE Guidance Note HSG 248. These employed stereo microscopy, polarized microscopy and dispersion staining techniques.

### RESULTS

Sample No.	Sample Ref.	Location	Asbestos Detected	Asbestos Type
DK/01	BS644781	Air Cadet Hut Office - Panels on Ceilings	Yes	Chrysotile Amosite
DK/02	BS644782	WC's x2 - Cisterns & Toilet Seats	Yes	Amosite

#### NOTES

1. Sample(s) was examined for the presence of 6 types of asbestos fibres: crocidolite (blue), amosite (brown), chrysotile (white), anthophyllite, actinolite and tremolite.
2. The results shown in this test report specifically refer to the sample(s) tested as received unless otherwise stated and samples collected by the client are evaluated using information provided by the client. For samples collected by the client the date of receipt is deemed to be the same as the date sampled.
3. Envirochem is a UKAS accredited laboratory for sampling and identification of asbestos containing materials.
4. Comments, observations and opinions are outside the scope of UKAS accreditation.
5. The analytical method in the HSG248 does not quantify the amount of asbestos present, therefore UKAS accreditation does not permit quantification.
6. If, during fibre identification, only 1 or 2 fibres are seen and identified as asbestos, then the term 'trace asbestos identified' is used.
7. This report shall not be reproduced except in full, without written approval of Envirochem.

SIGNATURE:



Authorised signatory







PRINT NAME: Ella Hiron

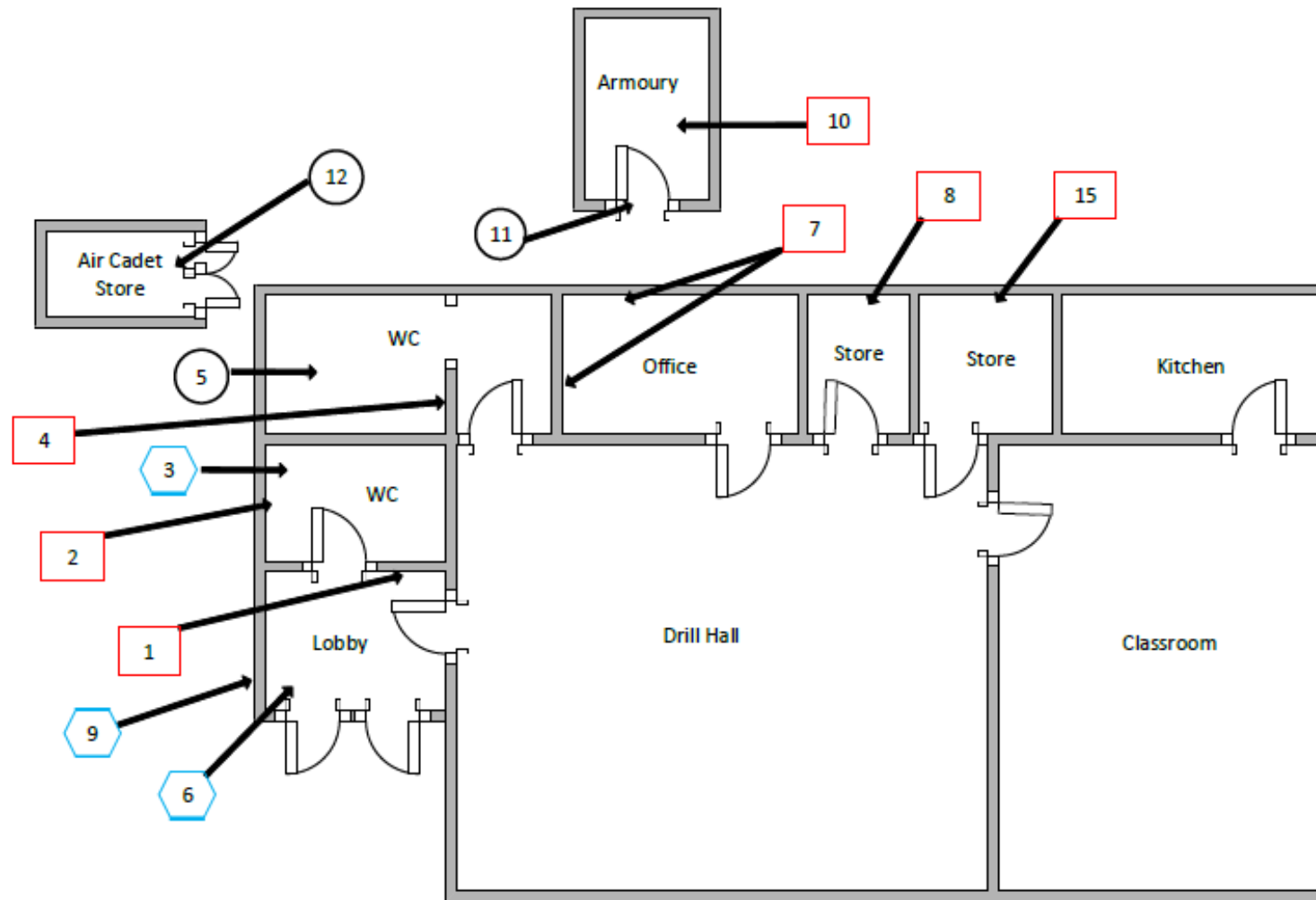
Reg. No. 2378228 England. Registered Office: Envirochem, 12 The Gardens, Broadcut, Fareham, Hampshire, PO16 8SS.

Page 1 of 1

Document Name	Author	Issued by	Revision Number	Issue Date	Page No
2020	David Kelly	Armour AS	0	8/12/2020	26

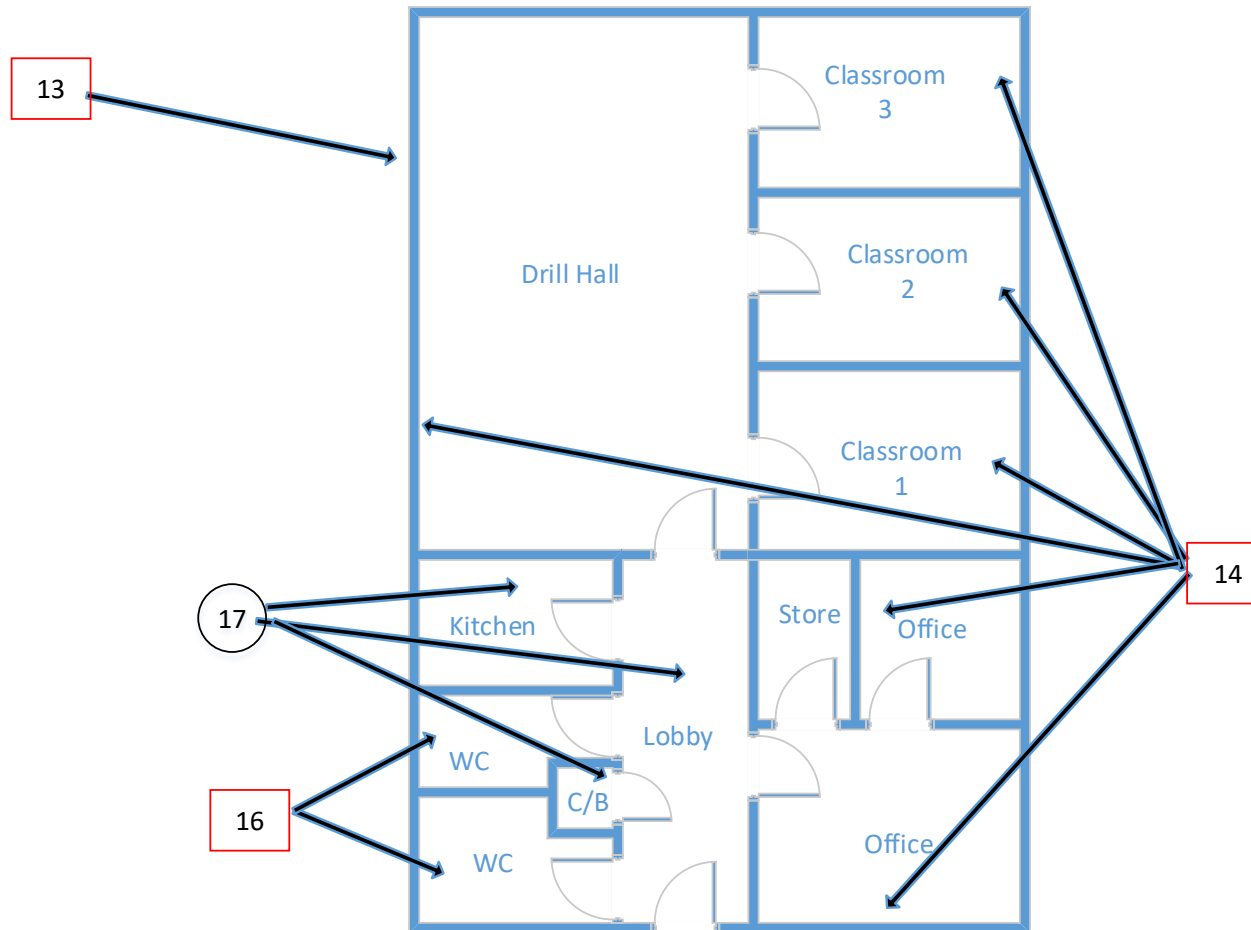
## Section 10: Site Plan







Key	
	Visual Inspection
	Asbestos Detected (Positive Item)
	No Asbestos Detected (Negative Item)
	Presumed to Contain Asbestos
	Strongly Presumed to Contain Asbestos
	No Access



Document Name	Author	Issued by	Revision Number	Issue Date	Page No
2020	David Kelly	Armour AS	1	18/10/2021	27

# Air Cadet Hut



Key	
	Visual Inspection
	Asbestos Detected (Positive Item)
	No Asbestos Detected (Negative Item)
	Presumed to Contain Asbestos
	Strongly Presumed to Contain Asbestos
	No Access

Document Name	Author	Issued by	Revision Number	Issue Date	Page No
2020	David Kelly	Armour AS	1	18/10/2021	28



**I the surveyor can confirm that this report is accurate to my findings onsite and this survey has been Content checked by myself.**

**Checked by: Will Fyles**

**Date: 18/10/2021**

**I the Admin Manager can confirm that this report is accurate to the paperwork received and this survey has been quality checked by myself.**

**Checked by: Andrea Bansee**

**Date: 18/10/2021**

**Report Compiled By**

**Armour Analytical Services Ltd, Admirals Yard, Station Road, Bristol, BS34 6LR**

Document Name	Author	Issued by	Revision Number	Issue Date	Page No
2020	David Kelly	Armour AS	1	18/10/2021	29