

**Project Number 3700**

**Re-Inspection  
Asbestos Survey Report - Revised**

**675 Army Air Corps  
Somerset  
TA1 5LJ**



Working in Partnership with Shield Services Group



Document Name	Author	Issued by	Revision Number	Issue Date	Page No
2021	David Kelly	Armour AS	1	18/10/2021	1

## **Contents**

<b>Section</b>	
<b>1</b>	<b>Contact Details</b>
<b>2</b>	<b>Executive Summary</b>
<b>3</b>	<b>Site Description &amp; Survey Information</b>
<b>4</b>	<b>Positive, Presumed or No Access Items</b>
<b>5</b>	<b>Negative Photos Sheets</b>
<b>6</b>	<b>Survey Objectives</b>
<b>7</b>	<b>Survey Notes</b>
<b>8</b>	<b>Material Assessment Algorithm</b>
<b>9</b>	<b>Certificates of Bulk Analysis</b>
<b>10</b>	<b>Site Plan</b>

Document Name	Author	Issued by	Revision Number	Issue Date	Page No
2021	David Kelly	Armour AS	1	18/10/2021	2



## **Section 1: Contact Details**

<b>Client Details:</b>		<b>Instructing Party:</b>	
Wessex RFCA Mount House Mount Street Taunton TA1 3QE		Wessex RFCA Mount House Mount Street Taunton TA1 3QE	
<b>Contact Name:</b>	Kelvin Walker	<b>Contact Name:</b>	Kelvin Walker
<b>Tel:</b> 01823 250116	<b>Fax:</b> N/A	<b>Tel:</b> 01823 250116	<b>Fax:</b> N/A

<b>Site Address:</b>		<b>Report Author:</b>	
675 Army Air Corps Somerset TA1 5LJ		Armour Analytical Services Admirals Yard Station Road Bristol BS34 6LR	
<b>Contact Name:</b>	Kelvin Walker	<b>Contact Name:</b>	Andrea Bansee
<b>Tel:</b> 01823 250116	<b>Fax:</b> N/A	<b>Mobile:</b> 07468 535 836	

<b>Lead Surveyor's Name:</b>	<b>Lead Surveyor's Authorising Signature:</b>
David Kelly	

Document Name	Author	Issued by	Revision Number	Issue Date	Page No
2021	David Kelly	Armour AS	1	18/10/2021	3



## **Section 2: Executive Summary**

No samples were taken during this survey.

In addition to the above sampled items, the following items have been either been "Previously Sampled", "Strongly Presumed" To Contain Asbestos or "Presumed" to Contain Asbestos as they were either visually identified in being so, labelled after previously being sampled on prior surveys or not accessible at the time of the survey:

The following items have been either been "Strongly Presumed" To Contain Asbestos or "Presumed" to Contain Asbestos as they were either visually identified in being so, labelled after previously being sampled on prior surveys or not accessible at the time of the survey:

Status	Sample Type	Location
Previously Sampled	Pipework Sleeve within Wall - Cement Product	Ground Floor WC 016
Presumed	Toilet Seat - PVC / Reinforced Plastics	Ground Floor Changing Room 017
Previously Sampled	Floor Tiles - Vinyl Products	Ground Floor Offices x 2 018
Presumed	Safe - Insulating Board	Ground Floor Office 019
Previously Sampled	Floor Tiles - Vinyl Products	Ground Floor Offices x 2 020
Previously Sampled	Floor Tiles - Vinyl Products	Ground Floor Admin Office and Staff Instructors Office 021
Presumed	Safes - Insulating Board	Ground Floor Admin Office and Staff Instructors Office 022
Previously Sampled	Floor Tiles - Vinyl Products	Ground Floor Offices x 3 023
Previously Sampled	Floor Tiles - Vinyl Products	Ground Floor Corridor 024
Previously Sampled	Floor Tiles and Adhesive - Vinyl Products	Ground Floor Main Hall and Gym 025
Previously Sampled	Floor Tiles and Adhesive - Vinyl Products	Ground Floor Cadet Locker Room 026
Presumed	Panels above Cage - Insulating Board	Ground Floor Armoury 039
Previously Sampled	Floor Tiles and Adhesive - Vinyl Products	Ground Floor Signals Storr 040
Previously Sampled	Panel to Top of Fireplace - Cement Product	First Floor Officers Lounge 001
Previously Sampled	Floor Tiles - Vinyl Products	First Floor Officers Lounge 002
Presumed	Toilet Seats - PVC / Reinforced Plastics	First Floor WC's x 2 003

Document Name	Author	Issued by	Revision Number	Issue Date	Page No
2021	David Kelly	Armour AS	1	18/10/2021	4

Status	Sample Type	Location
Previously Sampled	Floor Tiles - Vinyl Products	First Floor Conference Room 004
Previously Sampled	Floor Tiles - Vinyl Products	First Floor Harding Room 005
Previously Sampled	Infill Panels to Door - Insulating Board	First Floor Corridor 006
Previously Sampled	Panel to Door - Insulating Board	First Floor Loft Space above Corridor 007
Previously Sampled	Floor Tiles - Vinyl Products	First Floor Corridor 008
Previously Sampled	Infill Panels to Door - Insulating Board	First Floor Landing 009
Previously Sampled	Floor Tiles - Vinyl Products	First Floor Office 010
Previously Sampled	Floor Tiles - Vinyl Products	First Floor CEO Office 011
Presumed	Safe - Insulating Board	First Floor CEO Office 012
Presumed	Toilet Seat - PVC / Reinforced Plastics	First Floor WC 013
Presumed	Components within Electrical Boxes - Woven Product	First Floor Landing/Corridor 014
Previously Sampled	Floor Tiles and Adhesive - Vinyl Products	First Floor Medical Room 036
Previously Sampled	Wall Panel - Cement Product	Second Floor Bedroom 2 Cupboard 033
Previously Sampled	Floor Tiles and Adhesive - Vinyl Products	Second Floor Bedroom 2 and Cupboard 034
Previously Sampled	Ceiling to Cupboard - Insulating Board	Second Floor Bedroom 1 Cupboard 035
Presumed	Soffits above Plastic - Insulating Board	External Main Building 027
Previously Sampled	Downpipes - Cement Product	External Garages 028
Previously Sampled	Guttering - Cement Product	External Garages 029
Previously Sampled	Profiled Sheet Debris - Cement Product	External Garages 030
Previously Sampled	Profiled Roof - Cement Product	External Garages 031
Previously Sampled	Roof Edging - Cement Product	External Garages 032

The presence of asbestos in these areas cannot be ascertained at this time. If any works are to be carried out in these areas in the future, then these works should be approached cautiously.

Document Name	Author	Issued by	Revision Number	Issue Date	Page No
2021	David Kelly	Armour AS	1	18/10/2021	5



In accordance with current legislation, any suspect materials encountered in these areas are to be assumed to contain asbestos until proven otherwise. This will normally involve cessation of works in the affected area.

Document Name	Author	Issued by	Revision Number	Issue Date	Page No
2021	David Kelly	Armour AS	1	18/10/2021	6

## **Section 3: Site Description & Survey Information**

### **Brief description on the general building construction**

Brick and block construction with a pitched felt roof.

### **Caveat for no access areas**

No access within live electrics.  
No access to inspect high level roof areas

### **EXTERNAL MATERIALS**

Roof Type	Pitched
Roof Materials	Felt, Profiled Metal, Profiled Cement
Soffits	Plastic, Presumed asbestos above
Fascia	Timber
Walls	Brick
Verge Under cloaking	N/A
Guttering	Cement, Plastic
Downpipes	Metal, Cement, Plastic
Window/Door frames	Metal
Other Materials	N/A

### **INTERNAL MATERIALS**

Loft Insulation	Fiberglass
Roof Underlining	N/A
Ceilings	Concrete, Plasterboard
Walls <i>Internal</i>	Brick, Plasterboard
Floors	Carpet, Lino, Tiles, Concrete
Doors/Frames	Timber
Pipework/Insulation	MMMF
Boxings	Plasterboard, Timber
Boiler Make	Modern
Flue Pipes	Metal
Storage Heaters	Radiators
Electrical Boxes/Machinery	No access within electrics
Ducting/Risers	Metal
Stairs	Concrete
Lift Shafts	N/A
Other Materials	N/A

Document Name	Author	Issued by	Revision Number	Issue Date	Page No
2021	David Kelly	Armour AS	1	18/10/2021	7

## Section 4: Positive, Presumed or No Access Items

<b>Item No:</b>	<b>1</b>	<b>Sample No:</b>	<b>N/A</b>
<b>Location:</b>	First Floor - Officers Lounge 001		



<b>Material Description:</b>	Panel to Top of Fireplace - Cement Product	
<b>Identification:</b>	Previously Sampled - Asbestos Detected	
<b>Approx. quantity:</b>	1 m <sup>2</sup>	
<b>Accessibility</b>	Difficult	Assessment Score
<b>Product type:</b>	Cement	1
<b>Extent of Damage:</b>	Slight / minor damage	1
<b>Surface Treatment:</b>	Unsealed Cement	1
<b>Asbestos type:</b>	Chrysotile	1
<b>Material Assessment Score:</b>		4
<b>Priority Assessment Score:</b>		Negligible
<b>Action:</b>	Encapsulate	
<b>Comments:</b>	Previously sampled ref: Armour 18/6/19 Sample DK/1	

Document Name	Author	Issued by	Revision Number	Issue Date	Page No
2021	David Kelly	Armour AS	1	18/10/2021	8



**Item No:** 2 **Sample No:** N/A

**Location:** First Floor - Officers Lounge 002



<b>Material Description:</b>	Floor Tiles - Vinyl Products	
<b>Identification:</b>	Previously Sampled - Asbestos Detected	
<b>Approx. quantity:</b>	50 m <sup>2</sup>	
<b>Accessibility</b>	Difficult	<i>Assessment Score</i>
<b>Product type:</b>	Vinyl	1
<b>Extent of Damage:</b>	Slight / minor damage	1
<b>Surface Treatment:</b>	Non-friable	0
<b>Asbestos type:</b>	Chrysotile	1
<b>Material Assessment Score:</b>		3
<b>Priority Assessment Score:</b>		Negligible
<b>Action:</b>	Manage	
<b>Comments:</b>	Previously sampled ref: Armour 18/6/19 Sample DK/2. Under carpet	

Document Name	Author	Issued by	Revision Number	Issue Date	Page No
2021	David Kelly	Armour AS	1	18/10/2021	9

**Item No:** 3 **Sample No:** N/A

**Location:** First Floor - WC's x 2 003



<b>Material Description:</b>	Toilet Seats - PVC / Reinforced Plastics	
<b>Identification:</b>	Presumed to Contain Asbestos	
<b>Approx. quantity:</b>	2 no	
<b>Accessibility</b>	Easy	<i>Assessment Score</i>
<b>Product type:</b>	Bakelite	1
<b>Extent of Damage:</b>	Major damage	3
<b>Surface Treatment:</b>	Unsealed Insulation	3
<b>Asbestos type:</b>	Chrysotile	1
<b>Material Assessment Score:</b>		8
<b>Priority Assessment Score:</b>		Medium
<b>Action:</b>	Manage	
<b>Comments:</b>	Not possible to sample as may damage integrity of the seats	

Document Name	Author	Issued by	Revision Number	Issue Date	Page No
2021	David Kelly	Armour AS	1	18/10/2021	10

**Item No:** 4 **Sample No:** N/A

**Location:** First Floor - Conference Room 004

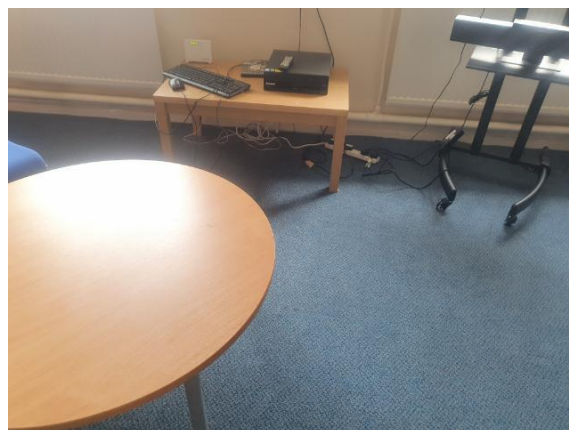


<b>Material Description:</b>	Floor Tiles - Vinyl Products	
<b>Identification:</b>	Previously Sampled - Asbestos Detected	
<b>Approx. quantity:</b>	35 m <sup>2</sup>	
<b>Accessibility</b>	Difficult	<i>Assessment Score</i>
<b>Product type:</b>	Vinyl	1
<b>Extent of Damage:</b>	Slight / minor damage	1
<b>Surface Treatment:</b>	Non-friable	0
<b>Asbestos type:</b>	Chrysotile	1
<b>Material Assessment Score:</b>		3
<b>Priority Assessment Score:</b>		Negligible
<b>Action:</b>	Manage	
<b>Comments:</b>	Previously sampled ref: Armour 18/6/19 Sample DK/4. Under carpet	

Document Name	Author	Issued by	Revision Number	Issue Date	Page No
2021	David Kelly	Armour AS	1	18/10/2021	11

**Item No:** 5 **Sample No:** N/A

**Location:** First Floor - Harding Room 005

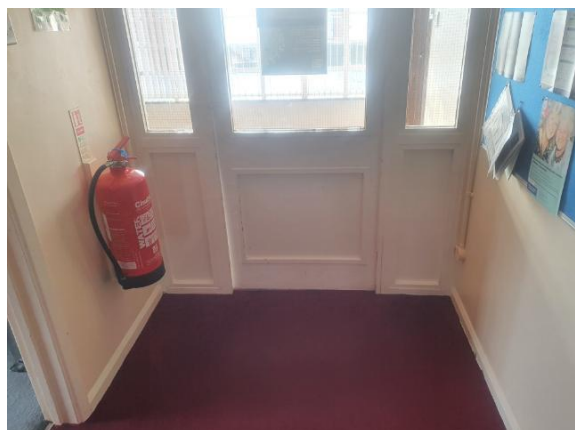


<b>Material Description:</b>	Floor Tiles - Vinyl Products	
<b>Identification:</b>	Previously Sampled - Asbestos Detected	
<b>Approx. quantity:</b>	36 m <sup>2</sup>	
<b>Accessibility</b>	Difficult	<i>Assessment Score</i>
<b>Product type:</b>	Vinyl	1
<b>Extent of Damage:</b>	Slight / minor damage	1
<b>Surface Treatment:</b>	Non-friable	0
<b>Asbestos type:</b>	Chrysotile	1
<b>Material Assessment Score:</b>		3
<b>Priority Assessment Score:</b>		Negligible
<b>Action:</b>	Manage	
<b>Comments:</b>	Previously sampled ref: Armour 18/6/19 Sample DK/6. Under carpet	

Document Name	Author	Issued by	Revision Number	Issue Date	Page No
2021	David Kelly	Armour AS	1	18/10/2021	12

**Item No:** 6 **Sample No:** N/A

**Location:** First Floor - Corridor 006



<b>Material Description:</b>	Infill Panels to Door - Insulating Board	
<b>Identification:</b>	Previously Sampled - Asbestos Detected	
<b>Approx. quantity:</b>	2 m <sup>2</sup>	
<b>Accessibility</b>	Easy	<i>Assessment Score</i>
<b>Product type:</b>	Asbestos Insulating Board	2
<b>Extent of Damage:</b>	Good	0
<b>Surface Treatment:</b>	Encapsulated AIB	1
<b>Asbestos type:</b>	Amosite	2
<b>Material Assessment Score:</b>		5
<b>Priority Assessment Score:</b>		Low
<b>Action:</b>	Manage	
<b>Comments:</b>	Previously sampled ref: Armour 18/6/19 Sample DK/7. 3no panels	

Document Name	Author	Issued by	Revision Number	Issue Date	Page No
2021	David Kelly	Armour AS	1	18/10/2021	13



**Item No:** 7

**Sample No:** N/A

**Location:** First Floor - Loft Space above Corridor 007

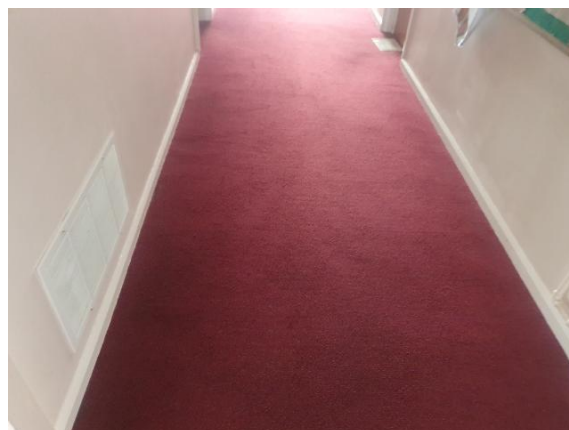
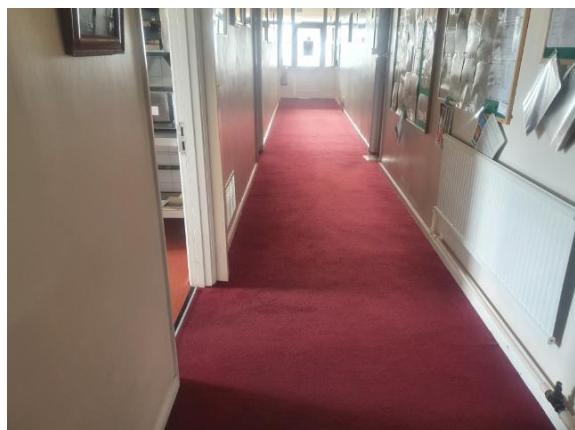


<b>Material Description:</b>	Panel to Door - Insulating Board	
<b>Identification:</b>	Previously Sampled - Asbestos Detected	
<b>Approx. quantity:</b>	1 m <sup>2</sup>	
<b>Accessibility</b>	Difficult	<i>Assessment Score</i>
<b>Product type:</b>	Asbestos Insulating Board	2
<b>Extent of Damage:</b>	Slight / minor damage	1
<b>Surface Treatment:</b>	Unsealed AIB	2
<b>Asbestos type:</b>	Amosite	2
<b>Material Assessment Score:</b>		7
<b>Priority Assessment Score:</b>		Medium
<b>Action:</b>	Further Investigation Needed	
<b>Comments:</b>	No safe access to inspect. Panel is visible from the hatch	

Document Name	Author	Issued by	Revision Number	Issue Date	Page No
2021	David Kelly	Armour AS	1	18/10/2021	14

**Item No:** 8 **Sample No:** N/A

**Location:** First Floor - Corridor 008

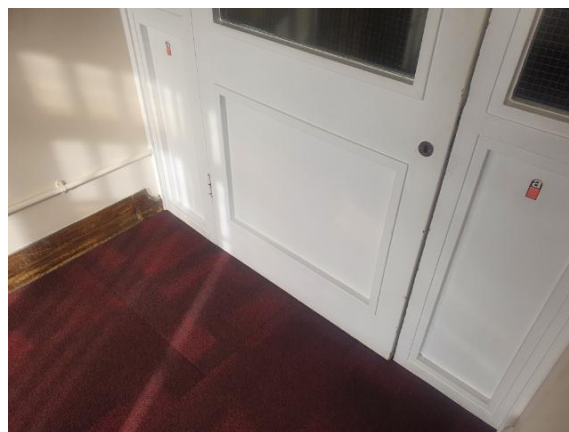
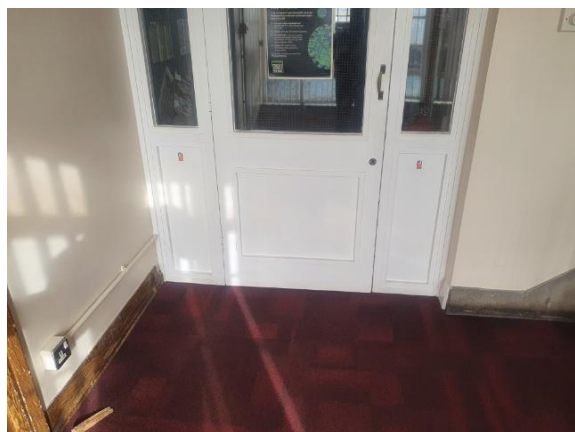


<b>Material Description:</b>	Floor Tiles - Vinyl Products	
<b>Identification:</b>	Previously Sampled - Asbestos Detected	
<b>Approx. quantity:</b>	22 m <sup>2</sup>	
<b>Accessibility</b>	Difficult	<i>Assessment Score</i>
<b>Product type:</b>	Vinyl	1
<b>Extent of Damage:</b>	Slight / minor damage	1
<b>Surface Treatment:</b>	Non-friable	0
<b>Asbestos type:</b>	Chrysotile	1
<b>Material Assessment Score:</b>		3
<b>Priority Assessment Score:</b>		Negligible
<b>Action:</b>	Manage	
<b>Comments:</b>	Previously sampled ref: Armour 18/6/19 Sample DK/6. Under carpet	

Document Name	Author	Issued by	Revision Number	Issue Date	Page No
2021	David Kelly	Armour AS	1	18/10/2021	15

**Item No:** 9 **Sample No:** N/A

**Location:** First Floor - Landing 009



<b>Material Description:</b>	Infill Panels to Door - Insulating Board	
<b>Identification:</b>	Previously Sampled - Asbestos Detected	
<b>Approx. quantity:</b>	2 m <sup>2</sup>	
<b>Accessibility</b>	Easy	<i>Assessment Score</i>
<b>Product type:</b>	Asbestos Insulating Board	2
<b>Extent of Damage:</b>	Good	0
<b>Surface Treatment:</b>	Encapsulated AIB	1
<b>Asbestos type:</b>	Amosite	2
<b>Material Assessment Score:</b>		5
<b>Priority Assessment Score:</b>		Low
<b>Action:</b>	Manage	
<b>Comments:</b>	Previously sampled ref: Armour 18/6/19 Sample DK/7. 3no panels	

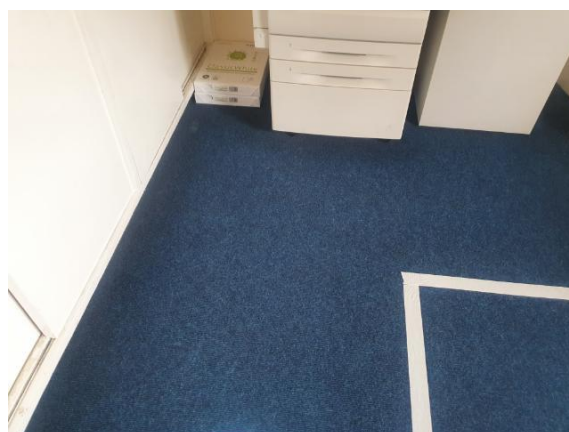
Document Name	Author	Issued by	Revision Number	Issue Date	Page No
2021	David Kelly	Armour AS	1	18/10/2021	16



**Item No:** 10

**Sample No:** N/A

**Location:** First Floor - Office 010



<b>Material Description:</b>	Floor Tiles - Vinyl Products	
<b>Identification:</b>	Previously Sampled - Asbestos Detected	
<b>Approx. quantity:</b>	16 m <sup>2</sup>	
<b>Accessibility</b>	Difficult	<i>Assessment Score</i>
<b>Product type:</b>	Vinyl	1
<b>Extent of Damage:</b>	Slight / minor damage	1
<b>Surface Treatment:</b>	Non-friable	0
<b>Asbestos type:</b>	Chrysotile	1
<b>Material Assessment Score:</b>		3
<b>Priority Assessment Score:</b>		Negligible
<b>Action:</b>	Manage	
<b>Comments:</b>	Previously sampled ref: Armour 18/6/19 Sample DK/6. Under carpet	

Document Name	Author	Issued by	Revision Number	Issue Date	Page No
2021	David Kelly	Armour AS	1	18/10/2021	17

**Item No:** 11

**Sample No:** N/A

**Location:** First Floor - CEO Office 011



<b>Material Description:</b>	Floor Tiles - Vinyl Products	
<b>Identification:</b>	Previously Sampled - Asbestos Detected	
<b>Approx. quantity:</b>	16 m <sup>2</sup>	
<b>Accessibility</b>	Difficult	<i>Assessment Score</i>
<b>Product type:</b>	Vinyl	1
<b>Extent of Damage:</b>	Slight / minor damage	1
<b>Surface Treatment:</b>	Non-friable	0
<b>Asbestos type:</b>	Chrysotile	1
<b>Material Assessment Score:</b>		3
<b>Priority Assessment Score:</b>		Negligible
<b>Action:</b>	Manage	
<b>Comments:</b>	Previously sampled ref: Armour 18/6/19 Sample DK/6. Under carpet. No access within boxing within room	

Document Name	Author	Issued by	Revision Number	Issue Date	Page No
2021	David Kelly	Armour AS	1	18/10/2021	18

**Item No:** 12

**Sample No:** N/A

**Location:** First Floor - CEO Office 012



<b>Material Description:</b>	Safe - Insulating Board	
<b>Identification:</b>	Presumed to Contain Asbestos	
<b>Approx. quantity:</b>	1 no	
<b>Accessibility</b>	Difficult	<i>Assessment Score</i>
<b>Product type:</b>	Asbestos Insulating Board	2
<b>Extent of Damage:</b>	Major damage	3
<b>Surface Treatment:</b>	Unsealed Insulation	3
<b>Asbestos type:</b>	Amosite, Chrysotile	2
<b>Material Assessment Score:</b>		10
<b>Priority Assessment Score:</b>		High
<b>Action:</b>	Manage	
<b>Comments:</b>	No access within safe casings without damaging safe	

Document Name	Author	Issued by	Revision Number	Issue Date	Page No
2021	David Kelly	Armour AS	1	18/10/2021	19

**Item No:** 13

**Sample No:** N/A

**Location:** First Floor - WC 013



<b>Material Description:</b>	Toilet Seat - PVC / Reinforced Plastics	
<b>Identification:</b>	Presumed to Contain Asbestos	
<b>Approx. quantity:</b>	1 no	
<b>Accessibility</b>	Easy	<i>Assessment Score</i>
<b>Product type:</b>	Bakelite	1
<b>Extent of Damage:</b>	Major damage	3
<b>Surface Treatment:</b>	Unsealed Insulation	3
<b>Asbestos type:</b>	Chrysotile	1
<b>Material Assessment Score:</b>		8
<b>Priority Assessment Score:</b>		Medium
<b>Action:</b>	Manage	
<b>Comments:</b>	Not possible to sample as may damage integrity of the seat	

Document Name	Author	Issued by	Revision Number	Issue Date	Page No
2021	David Kelly	Armour AS	1	18/10/2021	20

**Item No:** 14

**Sample No:** N/A

**Location:** First Floor - Landing/Corridor 014



<b>Material Description:</b>	Components within Electrical Boxes - Woven Product	
<b>Identification:</b>	Presumed to Contain Asbestos	
<b>Approx. quantity:</b>	2 no	
<b>Accessibility</b>	Difficult	<i>Assessment Score</i>
<b>Product type:</b>	Rope	2
<b>Extent of Damage:</b>	Major damage	3
<b>Surface Treatment:</b>	Unsealed Insulation	3
<b>Asbestos type:</b>	Chrysotile	1
<b>Material Assessment Score:</b>		9
<b>Priority Assessment Score:</b>		N/A
<b>Action:</b>	Manage	
<b>Comments:</b>	No access within live boxes	

Document Name	Author	Issued by	Revision Number	Issue Date	Page No
2021	David Kelly	Armour AS	1	18/10/2021	21

**Item No:** 16

**Sample No:** N/A

**Location:** Ground Floor - WC 016



<b>Material Description:</b>	Pipework Sleeve within Wall - Cement Product	
<b>Identification:</b>	Previously Sampled - Asbestos Detected	
<b>Approx. quantity:</b>	<1 LM	
<b>Accessibility</b>	Difficult	<i>Assessment Score</i>
<b>Product type:</b>	Cement	1
<b>Extent of Damage:</b>	Slight / minor damage	1
<b>Surface Treatment:</b>	Unsealed Cement	1
<b>Asbestos type:</b>	Chrysotile	1
<b>Material Assessment Score:</b>		4
<b>Priority Assessment Score:</b>		Negligible
<b>Action:</b>	Encapsulate	
<b>Comments:</b>	Previously sampled ref: Armour 18/6/19 Sample DK/9	

Document Name	Author	Issued by	Revision Number	Issue Date	Page No
2021	David Kelly	Armour AS	1	18/10/2021	22

**Item No:** 17

**Sample No:** N/A

**Location:** Ground Floor - Changing Room 017



<b>Material Description:</b>	Toilet Seat - PVC / Reinforced Plastics	
<b>Identification:</b>	Presumed to Contain Asbestos	
<b>Approx. quantity:</b>	2 no	
<b>Accessibility</b>	Easy	<i>Assessment Score</i>
<b>Product type:</b>	Bakelite	1
<b>Extent of Damage:</b>	Major damage	3
<b>Surface Treatment:</b>	Unsealed Insulation	3
<b>Asbestos type:</b>	Chrysotile	1
<b>Material Assessment Score:</b>		8
<b>Priority Assessment Score:</b>		Medium
<b>Action:</b>	Manage	
<b>Comments:</b>	Not possible to sample as may damage integrity of the seats	

Document Name	Author	Issued by	Revision Number	Issue Date	Page No
2021	David Kelly	Armour AS	1	18/10/2021	23



**Item No:** 18

**Sample No:** N/A

**Location:** Ground Floor - Offices x 2 018



<b>Material Description:</b>	Floor Tiles - Vinyl Products	
<b>Identification:</b>	Previously Sampled - Asbestos Detected	
<b>Approx. quantity:</b>	28 m <sup>2</sup>	
<b>Accessibility</b>	Difficult	<i>Assessment Score</i>
<b>Product type:</b>	Vinyl	1
<b>Extent of Damage:</b>	Moderate damage	2
<b>Surface Treatment:</b>	Non-friable	0
<b>Asbestos type:</b>	Chrysotile	1
<b>Material Assessment Score:</b>		4
<b>Priority Assessment Score:</b>		Negligible
<b>Action:</b>	Manage	
<b>Comments:</b>	Previously sampled ref: Armour 18/6/19 Sample DK/10. Under carpet	

Document Name	Author	Issued by	Revision Number	Issue Date	Page No
2021	David Kelly	Armour AS	1	18/10/2021	24



**Item No:** 19

**Sample No:** N/A

**Location:** Ground Floor - Office 019



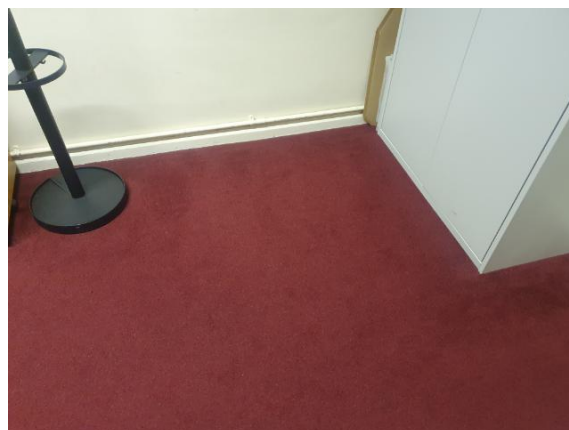
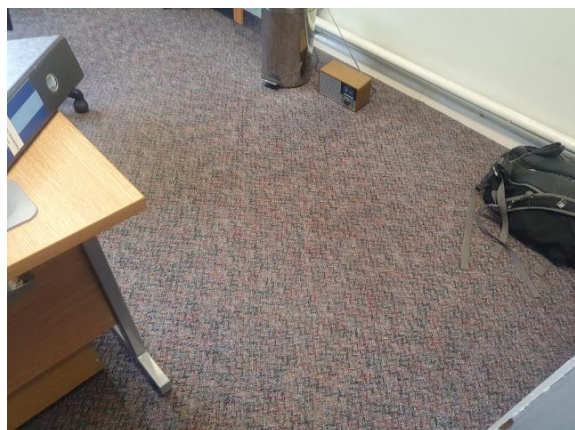
<b>Material Description:</b>	Safe - Insulating Board	
<b>Identification:</b>	Presumed to Contain Asbestos	
<b>Approx. quantity:</b>	1 no	
<b>Accessibility</b>	Difficult	Assessment Score
<b>Product type:</b>	Asbestos Insulating Board	2
<b>Extent of Damage:</b>	Major damage	3
<b>Surface Treatment:</b>	Unsealed Insulation	3
<b>Asbestos type:</b>	Amosite, Chrysotile	2
<b>Material Assessment Score:</b>		10
<b>Priority Assessment Score:</b>		High
<b>Action:</b>	Manage	
<b>Comments:</b>	No access within safe casings without damaging safe	

Document Name	Author	Issued by	Revision Number	Issue Date	Page No
2021	David Kelly	Armour AS	1	18/10/2021	25

**Item No:** 20

**Sample No:** N/A

**Location:** Ground Floor - Offices x 2 020



<b>Material Description:</b>	Floor Tiles - Vinyl Products	
<b>Identification:</b>	Previously Sampled - Asbestos Detected	
<b>Approx. quantity:</b>	22 m <sup>2</sup>	
<b>Accessibility</b>	Difficult	<i>Assessment Score</i>
<b>Product type:</b>	Vinyl	1
<b>Extent of Damage:</b>	Slight / minor damage	1
<b>Surface Treatment:</b>	Non-friable	0
<b>Asbestos type:</b>	Chrysotile	1
<b>Material Assessment Score:</b>		3
<b>Priority Assessment Score:</b>		Negligible
<b>Action:</b>	Manage	
<b>Comments:</b>	Previously sampled ref: Armour 18/6/19 Sample DK/10. Under carpet	

Document Name	Author	Issued by	Revision Number	Issue Date	Page No
2021	David Kelly	Armour AS	1	18/10/2021	26

**Item No:** 21

**Sample No:** N/A

**Location:** Ground Floor - Admin Office and Staff Instructors Office  
021



<b>Material Description:</b>	Floor Tiles - Vinyl Products	
<b>Identification:</b>	Previously Sampled - Asbestos Detected	
<b>Approx. quantity:</b>	30 m <sup>2</sup>	
<b>Accessibility</b>	Difficult	<i>Assessment Score</i>
<b>Product type:</b>	Vinyl	1
<b>Extent of Damage:</b>	Slight / minor damage	1
<b>Surface Treatment:</b>	Non-friable	0
<b>Asbestos type:</b>	Chrysotile	1
<b>Material Assessment Score:</b>		3
<b>Priority Assessment Score:</b>		Negligible
<b>Action:</b>	Manage	
<b>Comments:</b>	Previously sampled ref: Armour 18/6/19 Sample DK/10. Under carpet	

Document Name	Author	Issued by	Revision Number	Issue Date	Page No
2021	David Kelly	Armour AS	1	18/10/2021	27

**Item No:** 22

**Sample No:** N/A

**Location:** Ground Floor - Admin Office and Staff Instructors Office  
022



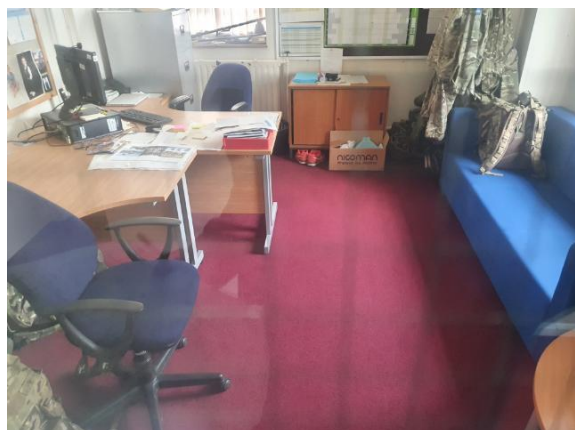
<b>Material Description:</b>	Safes - Insulating Board	
<b>Identification:</b>	Presumed to Contain Asbestos	
<b>Approx. quantity:</b>	2 no	
<b>Accessibility</b>	Difficult	Assessment Score
<b>Product type:</b>	Asbestos Insulating Board	2
<b>Extent of Damage:</b>	Major damage	3
<b>Surface Treatment:</b>	Unsealed Insulation	3
<b>Asbestos type:</b>	Amosite, Chrysotile	2
<b>Material Assessment Score:</b>		10
<b>Priority Assessment Score:</b>		High
<b>Action:</b>	Manage	
<b>Comments:</b>	No access within safe casings without damaging safes	

Document Name	Author	Issued by	Revision Number	Issue Date	Page No
2021	David Kelly	Armour AS	1	18/10/2021	28

**Item No:** 23

**Sample No:** N/A

**Location:** Ground Floor - Offices x 3 023



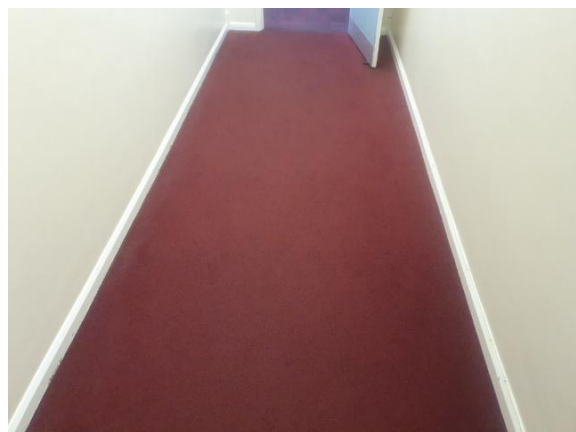
<b>Material Description:</b>	Floor Tiles - Vinyl Products	
<b>Identification:</b>	Previously Sampled - Asbestos Detected	
<b>Approx. quantity:</b>	40 m <sup>2</sup>	
<b>Accessibility</b>	Difficult	<i>Assessment Score</i>
<b>Product type:</b>	Vinyl	1
<b>Extent of Damage:</b>	Slight / minor damage	1
<b>Surface Treatment:</b>	Non-friable	0
<b>Asbestos type:</b>	Chrysotile	1
<b>Material Assessment Score:</b>		3
<b>Priority Assessment Score:</b>		Negligible
<b>Action:</b>	Manage	
<b>Comments:</b>	Previously sampled ref: Armour 18/6/19 Sample DK/10. Under carpet	

Document Name	Author	Issued by	Revision Number	Issue Date	Page No
2021	David Kelly	Armour AS	1	18/10/2021	29

**Item No:** 24

**Sample No:** N/A

**Location:** Ground Floor - Corridor 024



<b>Material Description:</b>	Floor Tiles - Vinyl Products	
<b>Identification:</b>	Previously Sampled - Asbestos Detected	
<b>Approx. quantity:</b>	30 m <sup>2</sup>	
<b>Accessibility</b>	Difficult	<i>Assessment Score</i>
<b>Product type:</b>	Vinyl	1
<b>Extent of Damage:</b>	Slight / minor damage	1
<b>Surface Treatment:</b>	Non-friable	0
<b>Asbestos type:</b>	Chrysotile	1
<b>Material Assessment Score:</b>		3
<b>Priority Assessment Score:</b>		Negligible
<b>Action:</b>	Manage	
<b>Comments:</b>	Previously sampled ref: Armour 18/6/19 Sample DK/10. Under carpet	

Document Name	Author	Issued by	Revision Number	Issue Date	Page No
2021	David Kelly	Armour AS	1	18/10/2021	30



**Item No:** 25

**Sample No:** N/A

**Location:** Ground Floor - Main Hall and Gym 025



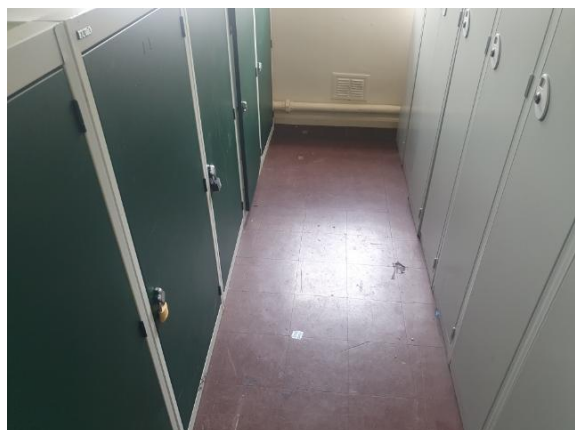
<b>Material Description:</b>	Floor Tiles and Adhesive - Vinyl Products	
<b>Identification:</b>	Previously Sampled - Asbestos Detected	
<b>Approx. quantity:</b>	50 m <sup>2</sup>	
<b>Accessibility</b>	Easy	<i>Assessment Score</i>
<b>Product type:</b>	Vinyl	1
<b>Extent of Damage:</b>	Moderate damage	2
<b>Surface Treatment:</b>	Non-friable	0
<b>Asbestos type:</b>	Chrysotile	1
<b>Material Assessment Score:</b>		4
<b>Priority Assessment Score:</b>		Negligible
<b>Action:</b>	Manage	
<b>Comments:</b>	Previously sampled ref: Armour 18/6/19 Sample DK/11	

Document Name	Author	Issued by	Revision Number	Issue Date	Page No
2021	David Kelly	Armour AS	1	18/10/2021	31

**Item No:** 26

**Sample No:** N/A

**Location:** Ground Floor - Cadet Locker Room 026



<b>Material Description:</b>	Floor Tiles and Adhesive - Vinyl Products	
<b>Identification:</b>	Previously Sampled - Asbestos Detected	
<b>Approx. quantity:</b>	18 m <sup>2</sup>	
<b>Accessibility</b>	Easy	<i>Assessment Score</i>
<b>Product type:</b>	Vinyl	1
<b>Extent of Damage:</b>	Moderate damage	2
<b>Surface Treatment:</b>	Non-friable	0
<b>Asbestos type:</b>	Chrysotile	1
<b>Material Assessment Score:</b>		4
<b>Priority Assessment Score:</b>		Negligible
<b>Action:</b>	Manage	
<b>Comments:</b>	Previously sampled ref: Armour 18/6/19 Sample DK/11	

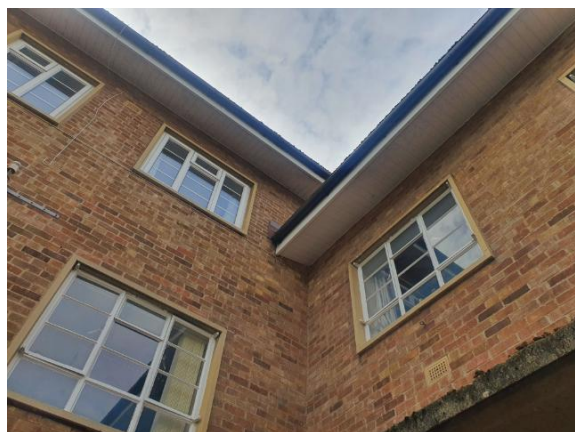
Document Name	Author	Issued by	Revision Number	Issue Date	Page No
2021	David Kelly	Armour AS	1	18/10/2021	32



**Item No:** 27

**Sample No:** N/A

**Location:** External - Main Building 027



<b>Material Description:</b>	Soffits above Plastic - Insulating Board	
<b>Identification:</b>	Presumed to Contain Asbestos	
<b>Approx. quantity:</b>	110 LM	
<b>Accessibility</b>	Difficult	<i>Assessment Score</i>
<b>Product type:</b>	Asbestos Insulating Board	2
<b>Extent of Damage:</b>	Major damage	3
<b>Surface Treatment:</b>	Unsealed Insulation	3
<b>Asbestos type:</b>	Amosite	2
<b>Material Assessment Score:</b>		10
<b>Priority Assessment Score:</b>		High
<b>Action:</b>	Manage	
<b>Comments:</b>	No access above plastic soffits	

Document Name	Author	Issued by	Revision Number	Issue Date	Page No
2021	David Kelly	Armour AS	1	18/10/2021	33

**Item No:** 28

**Sample No:** N/A

**Location:** External - Garages 028



<b>Material Description:</b>	Downpipes - Cement Product	
<b>Identification:</b>	Previously Sampled - Asbestos Detected	
<b>Approx. quantity:</b>	18 LM	
<b>Accessibility</b>	Medium	<i>Assessment Score</i>
<b>Product type:</b>	Cement	1
<b>Extent of Damage:</b>	Moderate damage	2
<b>Surface Treatment:</b>	Unsealed Cement	1
<b>Asbestos type:</b>	Chrysotile	1
<b>Material Assessment Score:</b>		5
<b>Priority Assessment Score:</b>		Low
<b>Action:</b>	Manage	
<b>Comments:</b>	Previously sampled ref: Armour 18/6/19 Sample DK/12. 3no pipes	

Document Name	Author	Issued by	Revision Number	Issue Date	Page No
2021	David Kelly	Armour AS	1	18/10/2021	34

**Item No:** 29

**Sample No:** N/A

**Location:** External - Garages 029



<b>Material Description:</b>	Guttering - Cement Product	
<b>Identification:</b>	Previously Sampled - Asbestos Detected	
<b>Approx. quantity:</b>	60 LM	
<b>Accessibility</b>	Difficult	<i>Assessment Score</i>
<b>Product type:</b>	Cement	1
<b>Extent of Damage:</b>	Slight / minor damage	1
<b>Surface Treatment:</b>	Unsealed Cement	1
<b>Asbestos type:</b>	Chrysotile	1
<b>Material Assessment Score:</b>		4
<b>Priority Assessment Score:</b>		Negligible
<b>Action:</b>	Manage	
<b>Comments:</b>	Previously sampled ref: Armour 18/6/19 Sample DK/12	

Document Name	Author	Issued by	Revision Number	Issue Date	Page No
2021	David Kelly	Armour AS	1	18/10/2021	35



**Item No:** 30

**Sample No:** N/A

**Location:** External - Garages 030



<b>Material Description:</b>	Profiled Sheet Debris - Cement Product	
<b>Identification:</b>	Previously Sampled - Asbestos Detected	
<b>Approx. quantity:</b>	1 m <sup>2</sup>	
<b>Accessibility</b>	Easy	<i>Assessment Score</i>
<b>Product type:</b>	Cement	1
<b>Extent of Damage:</b>	Major damage	3
<b>Surface Treatment:</b>	Unsealed Cement	1
<b>Asbestos type:</b>	Chrysotile	1
<b>Material Assessment Score:</b>		6
<b>Priority Assessment Score:</b>		Low
<b>Action:</b>	Remove	
<b>Comments:</b>	Previously sampled ref: Armour 18/6/19 Sample DK/19	

Document Name	Author	Issued by	Revision Number	Issue Date	Page No
2021	David Kelly	Armour AS	1	18/10/2021	36

**Item No:** 31

**Sample No:** N/A

**Location:** External - Garages 031



<b>Material Description:</b>	Profiled Roof - Cement Product	
<b>Identification:</b>	Previously Sampled - Asbestos Detected	
<b>Approx. quantity:</b>	200 m <sup>2</sup>	
<b>Accessibility</b>	Difficult	<i>Assessment Score</i>
<b>Product type:</b>	Cement	1
<b>Extent of Damage:</b>	Slight / minor damage	1
<b>Surface Treatment:</b>	Unsealed Cement	1
<b>Asbestos type:</b>	Chrysotile	1
<b>Material Assessment Score:</b>		4
<b>Priority Assessment Score:</b>		Negligible
<b>Action:</b>	Manage	
<b>Comments:</b>	Previously sampled ref: Armour 18/6/19 Sample DK/19	

Document Name	Author	Issued by	Revision Number	Issue Date	Page No
2021	David Kelly	Armour AS	1	18/10/2021	37

**Item No:** 32

**Sample No:** N/A

**Location:** External - Garages 032



<b>Material Description:</b>	Roof Edging - Cement Product	
<b>Identification:</b>	Previously Sampled - Asbestos Detected	
<b>Approx. quantity:</b>	8 LM	
<b>Accessibility</b>	Difficult	<i>Assessment Score</i>
<b>Product type:</b>	Cement	1
<b>Extent of Damage:</b>	Slight / minor damage	1
<b>Surface Treatment:</b>	Unsealed Cement	1
<b>Asbestos type:</b>	Chrysotile	1
<b>Material Assessment Score:</b>		4
<b>Priority Assessment Score:</b>		Negligible
<b>Action:</b>	Manage	
<b>Comments:</b>	No access to sample due to height restrictions	

Document Name	Author	Issued by	Revision Number	Issue Date	Page No
2021	David Kelly	Armour AS	1	18/10/2021	38

**Item No:** 33

**Sample No:** N/A

**Location:** Second Floor - Bedroom 2 Cupboard 033



<b>Material Description:</b>	Wall Panel - Cement Product	
<b>Identification:</b>	Previously Sampled - Asbestos Detected	
<b>Approx. quantity:</b>	3 m <sup>2</sup>	
<b>Accessibility</b>	Easy	<i>Assessment Score</i>
<b>Product type:</b>	Cement	1
<b>Extent of Damage:</b>	Slight / minor damage	1
<b>Surface Treatment:</b>	Unsealed Cement	1
<b>Asbestos type:</b>	Chrysotile	1
<b>Material Assessment Score:</b>		4
<b>Priority Assessment Score:</b>		Negligible
<b>Action:</b>	Manage	
<b>Comments:</b>	Previously sampled ref: Armour 18/6/19 Sample DK/13. Entire back wall of cupboard	

Document Name	Author	Issued by	Revision Number	Issue Date	Page No
2021	David Kelly	Armour AS	1	18/10/2021	39

**Item No:** 34

**Sample No:** N/A

**Location:** Second Floor - Bedroom 2 and Cupboard 034



<b>Material Description:</b>	Floor Tiles and Adhesive - Vinyl Products	
<b>Identification:</b>	Previously Sampled - Asbestos Detected	
<b>Approx. quantity:</b>	8 m <sup>2</sup>	
<b>Accessibility</b>	Difficult	Assessment Score
<b>Product type:</b>	Vinyl	1
<b>Extent of Damage:</b>	Slight / minor damage	1
<b>Surface Treatment:</b>	Non-friable	0
<b>Asbestos type:</b>	Chrysotile	1
<b>Material Assessment Score:</b>		3
<b>Priority Assessment Score:</b>		Negligible
<b>Action:</b>	Manage	
<b>Comments:</b>	Previously sampled ref: Armour 18/6/19 Sample DK/14. Under carpet	

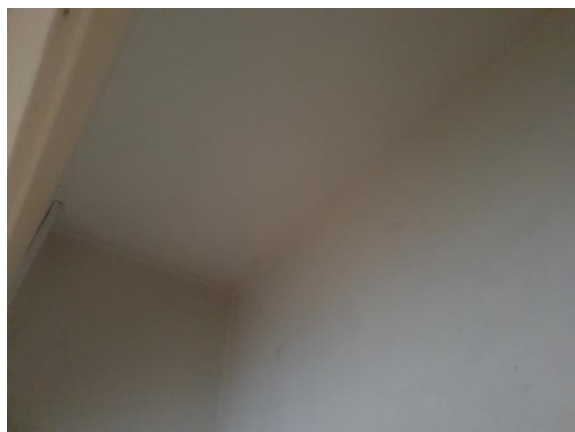
Document Name	Author	Issued by	Revision Number	Issue Date	Page No
2021	David Kelly	Armour AS	1	18/10/2021	40



**Item No:** 35

**Sample No:** N/A

**Location:** Second Floor - Bedroom 1 Cupboard 035



<b>Material Description:</b>	Ceiling to Cupboard - Insulating Board	
<b>Identification:</b>	Previously Sampled - Asbestos Detected	
<b>Approx. quantity:</b>	2 m <sup>2</sup>	
<b>Accessibility</b>	Medium	<i>Assessment Score</i>
<b>Product type:</b>	Asbestos Insulating Board	2
<b>Extent of Damage:</b>	Moderate damage	2
<b>Surface Treatment:</b>	Unsealed AIB	2
<b>Asbestos type:</b>	Amosite	2
<b>Material Assessment Score:</b>		8
<b>Priority Assessment Score:</b>		Medium
<b>Action:</b>	Encapsulate	
<b>Comments:</b>	Previously sampled ref: GU/TA/001/17. 4no holes in panel require encapsulation. Do not remove wires	

Document Name	Author	Issued by	Revision Number	Issue Date	Page No
2021	David Kelly	Armour AS	1	18/10/2021	41

**Item No:** 36

**Sample No:** N/A

**Location:** First Floor - Medical Room 036



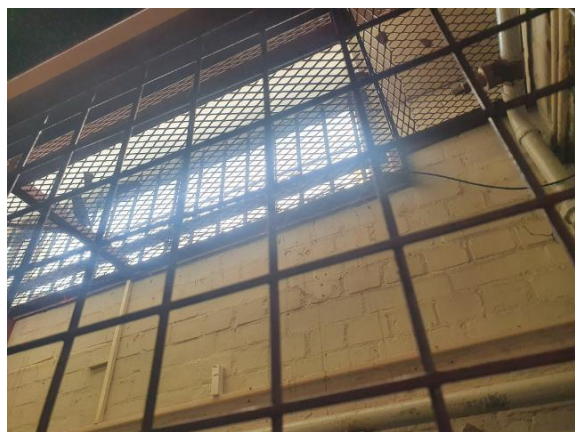
<b>Material Description:</b>	Floor Tiles and Adhesive - Vinyl Products	
<b>Identification:</b>	Previously Sampled - Asbestos Detected	
<b>Approx. quantity:</b>	15 m <sup>2</sup>	
<b>Accessibility</b>	Difficult	<i>Assessment Score</i>
<b>Product type:</b>	Vinyl	1
<b>Extent of Damage:</b>	Slight / minor damage	1
<b>Surface Treatment:</b>	Non-friable	0
<b>Asbestos type:</b>	Chrysotile	1
<b>Material Assessment Score:</b>		3
<b>Priority Assessment Score:</b>		Negligible
<b>Action:</b>	Manage	
<b>Comments:</b>	Previously sampled ref: Armour 18/6/19 Sample DK/6. Under carpet	

Document Name	Author	Issued by	Revision Number	Issue Date	Page No
2021	David Kelly	Armour AS	1	18/10/2021	42

**Item No:** 39

**Sample No:** N/A

**Location:** Ground Floor - Armoury 039



<b>Material Description:</b>	Panels above Cage - Insulating Board	
<b>Identification:</b>	Presumed to Contain Asbestos	
<b>Approx. quantity:</b>	6 LM	
<b>Accessibility</b>	Difficult	<i>Assessment Score</i>
<b>Product type:</b>	Asbestos Insulating Board	2
<b>Extent of Damage:</b>	Major damage	3
<b>Surface Treatment:</b>	Unsealed Insulation	3
<b>Asbestos type:</b>	Amosite	2
<b>Material Assessment Score:</b>		10
<b>Priority Assessment Score:</b>		High
<b>Action:</b>	Manage	
<b>Comments:</b>	No access above cage to sample. Panels located above cage next to windows	

Document Name	Author	Issued by	Revision Number	Issue Date	Page No
2021	David Kelly	Armour AS	1	18/10/2021	43

**Item No:** 40

**Sample No:** N/A

**Location:** Ground Floor - Signals Storr 040

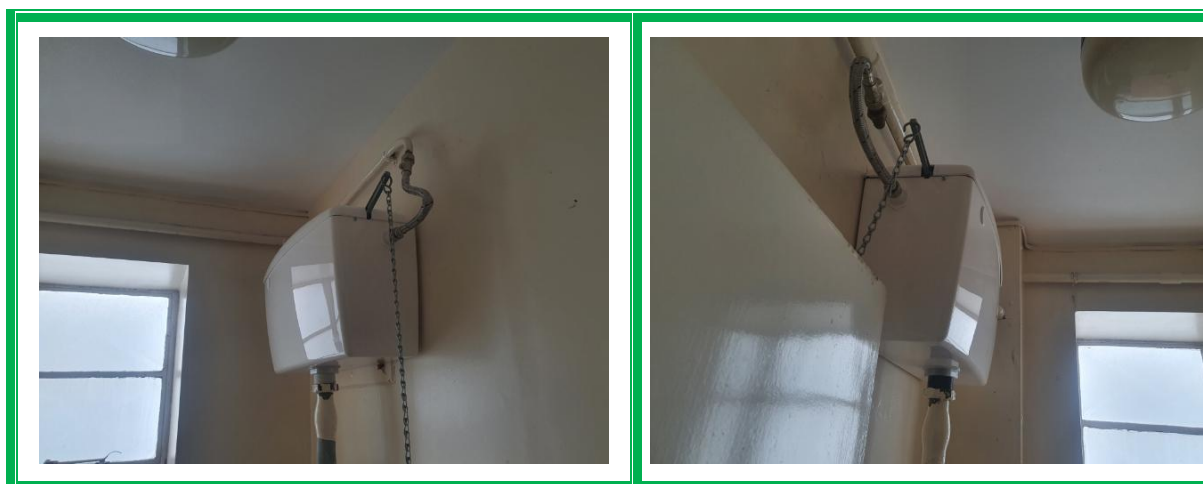


<b>Material Description:</b>	Floor Tiles and Adhesive - Vinyl Products	
<b>Identification:</b>	Previously Sampled - Asbestos Detected	
<b>Approx. quantity:</b>	20 m <sup>2</sup>	
<b>Accessibility</b>	Easy	<i>Assessment Score</i>
<b>Product type:</b>	Vinyl	1
<b>Extent of Damage:</b>	Moderate damage	2
<b>Surface Treatment:</b>	Non-friable	0
<b>Asbestos type:</b>	Chrysotile	1
<b>Material Assessment Score:</b>		4
<b>Priority Assessment Score:</b>		Negligible
<b>Action:</b>	Manage	
<b>Comments:</b>	Previously sampled ref: Armour 18/6/19 Sample DK/11	

Document Name	Author	Issued by	Revision Number	Issue Date	Page No
2021	David Kelly	Armour AS	1	18/10/2021	44

## Section 5: Negative Items

<b>Item No:</b>	<b>15</b>	<b>Sample No:</b>	<b>N/A</b>
<b>Location:</b>	Ground Floor - Changing Room 015		



<b>Material Description:</b>	No Suspect Materials Found	
<b>Identification:</b>	N/A	
<b>Approx. quantity:</b>	N/A	
<b>Accessibility</b>	N/A	<i>Assessment Score</i>
<b>Product type:</b>	N/A	N/A
<b>Extent of Damage:</b>	N/A	N/A
<b>Surface Treatment:</b>	N/A	N/A
<b>Asbestos type:</b>	N/A	N/A
<b>Material Assessment Score:</b>		N/A
<b>Priority Assessment Score:</b>		N/A
<b>Action:</b>	N/A	
<b>Comments:</b>	All cisterns replaced	

Document Name	Author	Issued by	Revision Number	Issue Date	Page No
2021	David Kelly	Armour AS	1	18/10/2021	45

<b>Item No:</b>	<b>37</b>	<b>Sample No:</b>	<b>N/A</b>
<b>Location:</b>	First Floor - Office 22 037		



<b>Material Description:</b>	No Suspect Materials Found	
<b>Identification:</b>	N/A	
<b>Approx. quantity:</b>	N/A	
<b>Accessibility</b>	N/A	<i>Assessment Score</i>
<b>Product type:</b>	N/A	N/A
<b>Extent of Damage:</b>	N/A	N/A
<b>Surface Treatment:</b>	N/A	N/A
<b>Asbestos type:</b>	N/A	N/A
<b>Material Assessment Score:</b>		N/A
<b>Priority Assessment Score:</b>		N/A
<b>Action:</b>	N/A	
<b>Comments:</b>	Previously a no access area now accessed. Solid walls, concrete ceiling, concrete under carpet.	

Document Name	Author	Issued by	Revision Number	Issue Date	Page No
2021	David Kelly	Armour AS	1	18/10/2021	46



**Item No:** 38

**Sample No:** N/A

**Location:** Ground Floor - Store R14 038



<b>Material Description:</b>	No Suspect Materials Found	
<b>Identification:</b>	N/A	
<b>Approx. quantity:</b>	N/A	
<b>Accessibility</b>	N/A	<i>Assessment Score</i>
<b>Product type:</b>	N/A	N/A
<b>Extent of Damage:</b>	N/A	N/A
<b>Surface Treatment:</b>	N/A	N/A
<b>Asbestos type:</b>	N/A	N/A
<b>Material Assessment Score:</b>		N/A
<b>Priority Assessment Score:</b>		N/A
<b>Action:</b>	N/A	
<b>Comments:</b>	Non asbestos lino under carpet	

Document Name	Author	Issued by	Revision Number	Issue Date	Page No
2021	David Kelly	Armour AS	1	18/10/2021	47



## **Section 6: Survey Objectives**

Instructions were received from Kelvin Walker of Wessex RFCA to carry out a Re-Inspection asbestos survey at 675 Army Air Corps, Somerset, TA1 5LJ in accordance with HSG264 and Armour Analytical's quality procedures.

The survey was carried out on 09 March 2021 by David Kelly with the objective of facilitating a Re-Inspection report. A survey, with the objective of accessing previously no accessed areas was carried out on 14 October 2021 by David Kelly.

Document Name	Author	Issued by	Revision Number	Issue Date	Page No
2021	David Kelly	Armour AS	1	18/10/2021	48



## **Section 7: Survey Notes**

This report has been written with reference to the various Guidance Notes etc, issued, and current at the date of this report and describes circumstances at the site on the date the investigation took place.

Where similar items exist in the building, only one or two samples may have been taken to ascertain the material content. It was assumed that similar products were of the same material.

Any person undertaking work within the buildings should be told of the presence of asbestos. This briefing also applies to any other person associated with the site, including staff, sub-contractors and others.

The drawings in the report are not to scale and are illustrative only to indicate approximate locations. The descriptions used are for location identification purposes.

All the recommendations described in this report are based upon assumptions made after consideration of the type of material, condition of the material, its location, analysis result and type of use the area is thought to be subjected to. However, statutory authorities or others could require amendments based on local knowledge, change in legislation, change in use or indeed other conditions or criteria.

Samples taken from floor tiles (or similar material) may include a bitumen adhesive as part of the sample. It is known that some proprietary brands of bitumen have an asbestos content and this will be included as an integral part of the bulk sample unless otherwise stated.

**Due to the artex being non-homogenous, it is recommended to treat all areas as containing asbestos if you have a positive sample of artex.**

Document Name	Author	Issued by	Revision Number	Issue Date	Page No
2021	David Kelly	Armour AS	1	18/10/2021	49

## **Section 8: Material Assessment Algorithm**

Variable	Score	Examples
Product type	1	Vinyl, 'Bakelite', Cement, Textured Coating, Non-Friable Debris, Floor Tiles, Bitumen, Reinforced Plastics, Mastic (putty), Windowsills
	2	Asbestos Insulating Board, Paper, Rope, Burned Cement Debris, Flashguards, Gaskets
	3	Pipe Insulation, Spray Coating, Friable Debris, Loose Fill Asbestos
Condition / Damage	0	Good
	1	Slight / Minor Damage
	2	Moderate Damage – Breakage to Surface Treatment
	3	Major Damage – Smashed or Exposed Material
Surface Treatment	0	Non-Friable E.G. Vinyl
	1	Enclosed Insulation, Encapsulated AIB, Unsealed Cement, Woven Material, Paper
	2	Unsealed AIB, Encapsulated Insulation, Encapsulated Pipe Lagging
	3	Unsealed Insulation, Spray Coating, Unsealed Pipe Lagging
Asbestos Type	1	Chrysotile
	2	Amosite & Other Amphiboles
	3	Crocidolite

The scores from each of the four sections are added together to produce a risk score:

Risk score	Risk assessment
<b>10 or more</b>	High risk
<b>7 – 9</b>	Medium risk
<b>5 – 6</b>	Low risk
<b>4 &amp; below</b>	Negligible risk

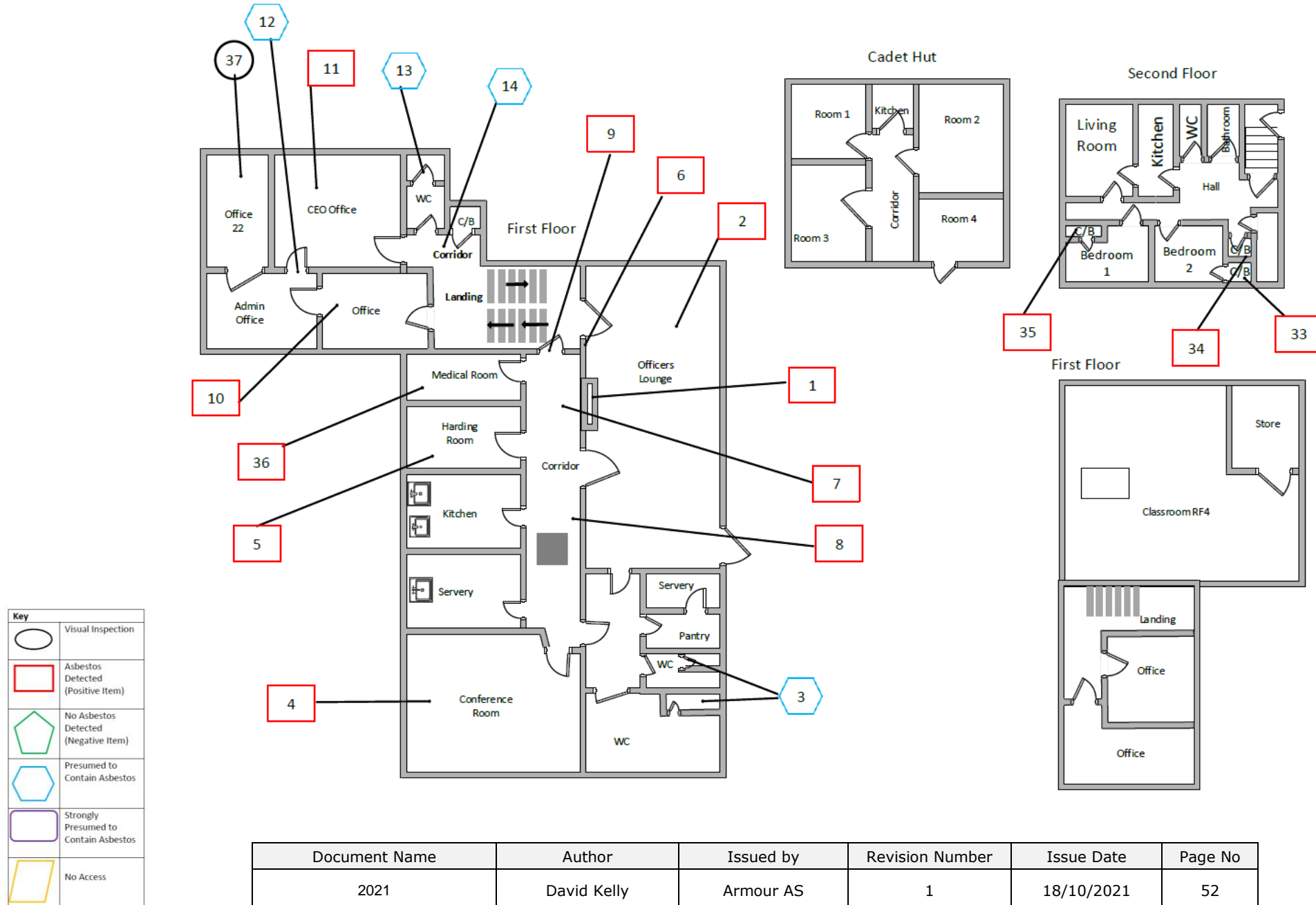


## **Section 9: Certificates of Bulk Analysis**

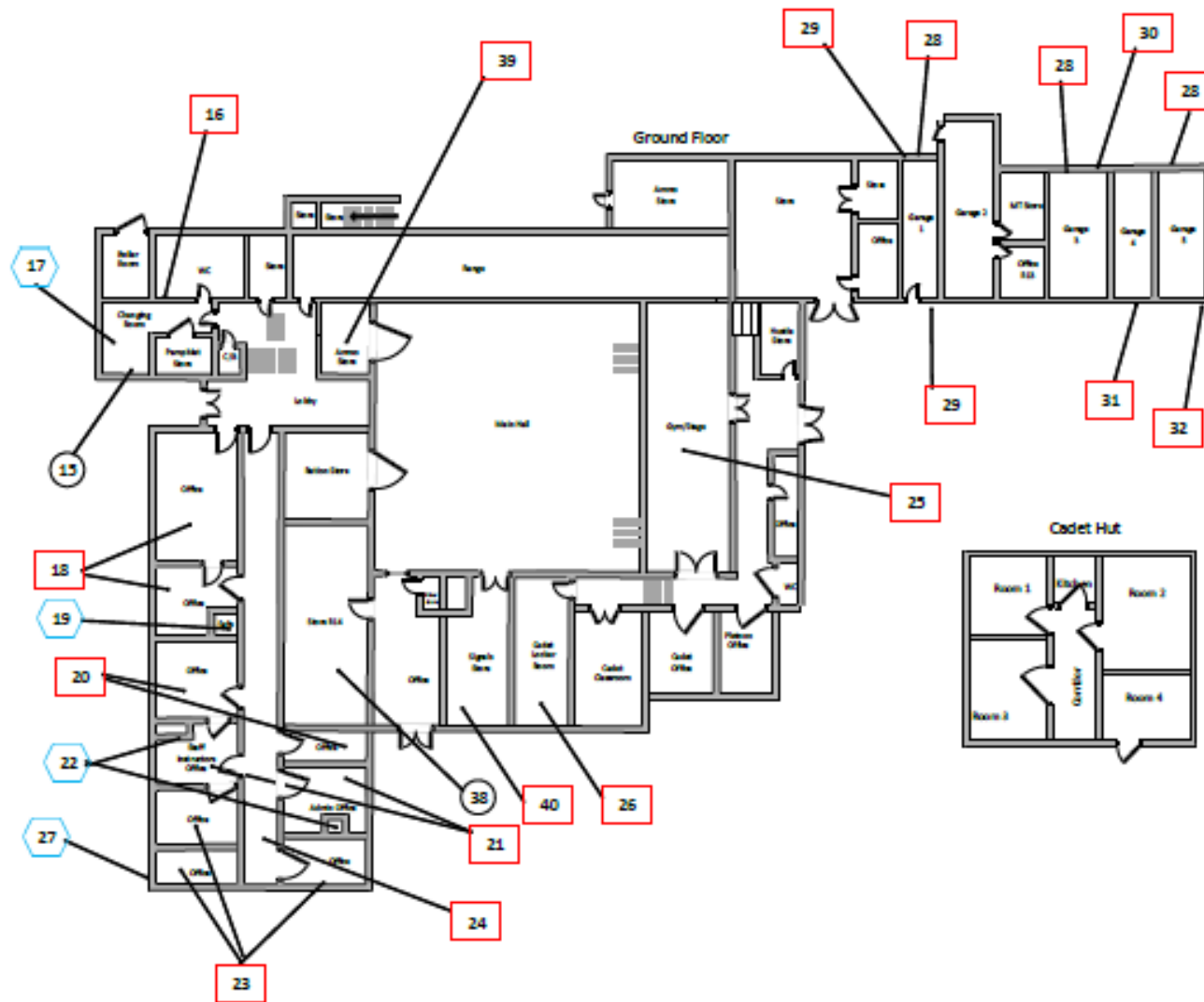
No samples were taken during this survey.







Document Name	Author	Issued by	Revision Number	Issue Date	Page No
2021	David Kelly	Armour AS	1	18/10/2021	51

## Section 10: Site Plan







Key	
	Visual Inspection
	Asbestos Detected (Positive Item)
	No Asbestos Detected (Negative Item)
	Presumed to Contain Asbestos
	Strongly Presumed to Contain Asbestos
	No Access

Document Name	Author	Issued by	Revision Number	Issue Date	Page No
2021	David Kelly	Armour AS	1	18/10/2021	53



**I the surveyor can confirm that this report is accurate to my findings onsite and this survey has been Content checked by myself.**

**Checked by: Will Fyles**

**Date: 18/10/2021**

**I the Admin Manager can confirm that this report is accurate to the paperwork received and this survey has been quality checked by myself.**

**Checked by: Andrea Bansee**

**Date: 18/10/2021**

**Report Compiled By**

**Armour Analytical Services Ltd, Admirals Yard, Station Road, Bristol, BS34 6LR**

Document Name	Author	Issued by	Revision Number	Issue Date	Page No
2021	David Kelly	Armour AS	1	18/10/2021	54