



Defence Infrastructure Organisation

Gas Safety Management Plan (Section A)

Barnstaple ARC ACF ATC

05/04/2025

**Produced to meet the requirements of the Gas Safety
(Installation and Use) Regulations 1998**

Unique Document Reference:
WX01-A-20211006
Issued by DIO TS PGE

Establishment: Barnstaple ARC ACF ATC

ESTABLISHMENT KEY PERSONALITIES (GAS) CONTACTS

Role	Name	Tel No.	Email
Head of Establishment	Lt Col Oliver Bevan	07802 881277	oliver.bevan144@mod.gov.uk
Establishment's SHEF	WO2 S Barnes AFPA 6 RIFLES	07946 720697	Steve.barnes163@mod.gov.uk
Establishments 4C's Coordinator	SSgt Andy Smith	01392492429	Andrew.smith587@mod.gov.uk
Senior DIO Estate Representative or Equivalent	Mark Cubitt	07955 280440	wx-est-hd@rfca.mod.uk
Site DIO Estate Representative or Equivalent	Kelvin Walker	07508 130359	wx-est-mgr2@rfca.mod.uk
MMO Site Manager or equivalent	Capt Micky Saunders 6 RIFLES	01392492429	michael.saunders953@mod.gov.uk
Gas Safety Manager (GSM)	Justin Westcott	07793222820	Justin.Westcott@vivodefence.com
Gas Responsible Person (GRP)	Riona Moroney	07854053184	Riona.moroney@vivodefence.com

The Content of this Gas Safety Management Plan (GSMP) have been Approved by the Gas Safety Manager:

Signature: *JP Westcott*

Date: 05/04/2025

Authorisation for Implementation

The content and format of this GSMP has been agreed and authorised for implementation by Defence Infrastructure Organisation Technical Services Principal Gas Engineer (DIO TS PGE) and a unique reference number has been generated to support this.

Approved – J Obbard SME(Gas) – 6th October 2021

The Content of this GSMP have been agreed by the Senior DIO Estate Representative or Equivalent and future works following the findings will be supported:

Signature:

M Cubitt

Date: 28/4/2025

The content of this GSMP have been agreed by the Head of Establishment and future works following the findings will be supported

Signature: O.Bevan

Date: 04/06/25

Unique Document Reference:

Establishment: Barnstaple ARC ACF ATC

WX01-A-20211006

Issued by DIO TS PGE

REVIEWS AND AMMENDMENTS

GSMPs are 'living documents' that should be subject to continual review and updating as required. Although the level of attention required will vary considerably depending on the size and complexity of each site, GSMPs should be reviewed at least once per quarter by the GRP, unless otherwise agreed by the PGE. Although it is likely that changes are not required at each review, the date of review and any changes made should be indicated on the tables below. The review of the GSMP will include a site visit to ensure that the site and the content of the GSMP remain valid. The reviews and amendments made will be deleted during the DIO TS three yearly review when the GSMP is re-authorised by the PGE.

Date	Page No.	Amendment
24/09/2021	All	Initial Development
06/01/2022	All	Transferred to New Template 9.0
25/04/2022	2,3	RFCA gas emergency helpdesk telephone number added
25/04/2022	2	Updated Section 1.4
25/04/2022	3	Inserted New Gas Supplier Details
25/04/2022	3	Updated Section 1.5 and gas emergency centre number
25/04/2022	9	Added new emergency number to section 5.1
25/04/2022	8 & 12	Added gas line drawing details and drawings
02/08/2022	ii, 1	Updated HoE and key personality details
02/08/2022	8	Added Icon for gas line drawings
05/01/2023	N/A	No Amendments Required
28/04/2023	N/A	No Amendments Required
18/07/2023	N/A	No Amendments Required
31/10/2023	N/A	No Amendments Required
16/01/2024	ii & 1	Updated HoE, SHEF, 4c's and site Manager as site Handed over to 6 Rifles
19/04/2024	N/A	No Amendments Required
03/07/2024	11	Added SSOV Details in Section 6.2, Added New HoE Details
09/08/2024	ii & 10	Added New 4c's Details and New Water Heater Details (Fitted without Prior Knowledge)
17/09/2024	ii, 1	Updated HoEstates details
17/10/2024		GSM re-authorisation (previously authorised 31/10/2023)
19/02/2025	ii	Update GSM & GRP Contact details
19/02/2025	All	Update literature to reflect VIVO as MMO & Responsible for Gas Management

Date	Reviewed by	Authorised by	Comments
24/09/2021	M Fenwick	N King	Initial Review
06/01/2022	M Fenwick	M Fenwick	Quarterly review
25/04/2022	M Fenwick	M Fenwick	Quarterly review
02/08/2022	M Fenwick	M Fenwick	Quarterly review
19/10/2022	M Fenwick	N King	Annual Review
05/01/2023	M Fenwick	M Fenwick	Quarterly review
28/04/2023	M Fenwick	M Fenwick	Quarterly review
18/07/2023	M Fenwick	M Fenwick	Quarterly review
31/10/2023	M Fenwick	N King	Annual Review
16/01/2024	M Fenwick	M Fenwick	Quarterly review
19/04/2024	M Fenwick	M Fenwick	Quarterly review
03/07/2024	M Fenwick	M Fenwick	Quarterly review

Unique Document Reference:

Establishment: Barnstaple ARC ACF ATC

WX01-A-20211006

Issued by DIO TS PGE

14/10/2024	M Fenwick		Annual Review
17/10/2024	Neville King	Neville King	GSM re-authorisation
17/01/2025	M Fenwick	M Fenwick	DNV De-Mobilisation Review/Handover
19/02/25	R Moroney	R Moroney	Quarterly Review
05/04/25	J Westcott	J Westcott	Initial Review/Approval. Note missing appliance serial numbers to be obtained on a quarterly visit.

Unique Document Reference:
WX01-A-20211006
Issued by DIO TS PGE

Establishment: Barnstaple ARC ACF ATC

FORWARD

MOD, as a gas conveyor within Great Britain, has submitted an Exemplar Gas Safety Case (MOD GSC) to demonstrate compliance with the Gas Safety (Management) Regulations 1996 (GS(M)R). Maintenance Management Organisations (MMO's) are engaged who have the overall contractual responsibility to operate and maintain the gas network assets under their Contract, including the management of the safe flow of gas within the system and the provision of an emergency service. The MOD delegate specific duties to the MMO but accountability for gas safety on each site rests with the Head of Establishment.

Whilst gas downstream of the Emergency Control Valve (ECV) fall outside of the scope of (GS(M)R) similar criteria as those referred to above must be accommodated within an appropriate management system. The specific criteria required to adequately manage gas infrastructure downstream of the ECV are described in the Gas Safety (Installation and Use) Regulations 1998 (GS(IU)R).

The MOD GSC considers all parts of the MOD estates gas supply system that forms part of the gas supply network. This includes all parts of the MOD gas network from the Bulk Primary Meter Installation to the individual gas appliances and the safe release of the products of combustion. The MOD GSC considers primarily those matters that relate to the management of the safe flow of gas within the system and the provision of an emergency service for all aspects of the gas system.

Following initial approval of the Gas Safety Management Plans (GSMPs) by the DIO Principal Gas Engineer (PGE), the Gas Safety Manager (GSM) is required to reapprove this GSMP annually. GSMPs must be submitted to DIO PGE every three years for authorisation.

GSMP Section A document contains site specific details of the establishments utilisation infrastructure to assist with measures to ensure compliance with the GS(IU)R for installation pipework and associated components.

GSMP Section B documents contain site specific details and arrangements as a direct annex to the MOD GSC in line with the Gas Safety (Management) Regulations 1996 (GS(M)R).

GSMP Section C document contains site specific details and requirements of the establishment's LPG networks.

Although the legal status of this document applies in the UK only, the MOD apply the same requirements to the management of gas on its overseas estate, in accordance with the currently published Secretary of State's Health and Safety policy statement.

Contents

ESTABLISHMENT KEY PERSONALITIES (GAS) CONTACTS	II
REVIEWS AND AMMENDMENTS	III
FORWARD.....	V
1 THE DUTY HOLDER AND ESTABLISHMENT LEVEL KEY PERSONALITIES.....	7
1.1. GAS SAFETY CASE DUTY HOLDER.....	7
1.2. DIO TECHNICAL SERVICES PRINCIPAL GAS ENGINEER (PGE).	7
1.3. ESTABLISHMENT PERSONALITIES.....	7
1.4. MAINTENANCE MANAGEMENT ORGANISATION (MMO).....	8
1.5. ADDITIONAL GAS CONTACTS.	8
2 SITE SPECIFIC DETAILS.....	9
2.1 SITE OVERVIEW.	9
2.2 NATURAL GAS.....	9
2.3 LPG GAS.	10
2.4 EXTERNAL INSTALLATION PIPEWORK.	10
2.5 DETAILS OF BUILDINGS SERVED.....	10
2.6 ADDITIONAL DETAILS OF BUILDINGS BEING SERVED.....	11
3 METER DETAILS	12
3.1 PRIMARY METER DETAILS.....	12
3.2 UTILISATION METER DETAILS. (METERS SUPPLIED DIRECTLY FROM THE MOD GAS NETWORK)	12
4 DIAGRAMS AND DRAWINGS.....	13
4.1 LINE DIAGRAMS FOR BUILDING(S) INTERNAL GAS INSTALLATION PIPEWORK.	13
4.2 ADDITIONAL DRAWINGS.	13
5 GAS INCIDENTS.....	14
5.1 SITE REPORTING PROCEDURES FOR DEALING WITH GAS INCIDENTS.....	14
6 GAS EQUIPMENT	15
6.1 EQUIPMENT LIST.....	15
6.2 ADDITIONAL EQUIPMENT INFORMATION.....	16
7 ANNEXES	17

Unique Document Reference:
WX01-A-20211006
Issued by DIO TS PGE

Establishment: Barnstaple ARC ACF ATC

1 THE DUTY HOLDER AND ESTABLISHMENT LEVEL KEY PERSONALITIES

1.1. Gas Safety Case Duty Holder.

The duty holder for the MOD Gas Safety Case is the Permanent Under Secretary for Defence (PUS). However, day to day responsibility for the preparation and maintenance of the document is delegated to the DIO TS Head of Engineering and Construction, who also has the responsibility for managing the system in accordance with the Safety Case. PUS delegates maintenance responsibility to the Top-Level Budget Holders (TLB's), to manage safety of the gas network. The TLB's utilise MOD Contracts i.e. MMOs who have responsibility for maintaining the gas network on behalf of the MOD.

Name:	Permanent Under Secretary
Address:	Main Building Horse Guards Parade Whitehall London SW1A 2HB

1.2. DIO Technical Services Principal Gas Engineer (PGE).

The PGE assumes the role of Senior Authorising Authority which is a term used within the MOD to recognise the authority of the person responsible for overseeing the appointment of, and auditing Authorising Engineers (AEs). For Gas the AEs are replaced by Gas Safety Managers (GSMs).

Name:	Jeremy Obbard
Address:	DIO HQ Whittington Barracks Lichfield WS14 9TJ
☎:	07748 903260
✉:	Jeremy.obbard100@mod.gov.uk

1.3. Establishment Personalities.

Name of Establishment:	Barnstaple ARC ACF ATC	
Establishment Address:	Oakleigh Rd Barnstaple North Devon EX32 8JT.	
Head of Establishment (HoE) (This is the most senior MOD person identified, by the chain of command, as responsible for the establishment. The HoE holds accountability for ensuring site compliance with the requirements of GSMR and the MOD GSC, including this GSMP.)	Name: Position: Organisation: Address:	Lt Col Oliver Bevan 6 RIFLES CO MOD BN HQ 6 RIFLES Block 7 Wyvern Bks Exeter Devon EX2 6AR ☎: 07802 881277 ✉: oliver.bevan144@mod.gov.uk
Senior DIO representative or equivalent (This may be the SEFM, but will vary depending on the contract this establishment falls under)	Name: Position: Organisation: Address:	Mark Cubitt Head of Estates Wessex Reserve Forces' & Cadets' Association Mount House Mount Street Taunton Somerset TA1 3QE ☎: 07955 280440 ✉: wx-est-hd@rfca.mod.uk

Unique Document Reference:
WX01-A-20211006
Issued by DIO TS PGE

Establishment: Barnstaple ARC ACF ATC

1.4. Maintenance Management Organisation (MMO).		
The MMO for this establishment is: VIVO		
Gas Emergency Helpdesk (Typically, MMO Helpdesk) (24 Hours) Note: Please do not contact the general public National Gas Emergency Service for suspected gas escapes on RFCA infrastructure.	Organisation: ☎:	VIVO Helpdesk Helpdesk 25 Goodlass Road Hunts Cross Liverpool L24 9HJ 0800 030 9320
Gas Safety Manager (GSM)	Name: Organisation: Address: ☎: ✉:	Justin Westcott VIVO Defence Services Building 003 CTCRM Lympstone NR Exmouth Devon EX8 5AR 07793 222820 Justin.Westcott@vivodefence.com
Gas Responsible Person (GRP)	Name: Organisation: Address: ☎: ✉:	Riona Moroney VIVO Defence Services Building 003 CTCRM Lympstone NR Exmouth Devon EX8 5AR 07845053184 Riona.Moroney@vivodefence.com
1.5. Additional Gas Contacts.		
Gas Supplier	Organisation: Address: ☎: ✉:	Total Energies Gas & Power 55-57 High Street Redhill Surrey RH1 1RX 01737 275 746 gp.redhill.ccs@totalenergies.com
LPG Supplier	Organisation: Address: ☎: ✉:	/A
Meter Asset Manager (MAM)	Organisation: Address: ☎: ✉:	Energy Assets Ltd 6 Almondvale Business Park Almondvale Way Livingston EH54 6GA 0800 001 4310 customerservices.energy@EnergyAssets.co.uk
National Gas Emergency Centre (24 Hours)	☎:	0800 111 999

2 SITE SPECIFIC DETAILS

2.1 Site Overview.

A brief description of the establishment and its current use. This should include how many separate sites are present and the number of buildings being supplied by gas.

Barnstaple ARC ACF ATC is a single site establishment with 2 buildings on site – Old and New building. Both buildings are supplied with gas direct from the EGDN network with single supply meters.

The buildings are used for office space, meeting/conference rooms, stores, catering, bar/lounge, garages, accommodation, and a drill hall.

There may be around 10 people on site day to day but can have around 100 people on site at times for parades or functions.

2.2 Natural Gas.

A brief description of the natural gas installations, including how many MOD networks are present, the number of buildings each MOD network supplies and how many buildings are supplied direct from the EGDN. This should also include any demarcations in place between stakeholders and responsibilities.

Barnstaple ARC ACF ATC is a single site establishment with 2 buildings – Old and New building. Both buildings are supplied via a low pressure (LP) Wales and West Utilities gas supply with single stream MAM owned and operated gas meters.

Single Supply Meter 001 – Old Building

The old building is fed by a single low pressure natural gas supply from the EGDN network. This feeds an individual MAM owned and operated gas meter and regulator which supplies gas to the plant room with 4 appliances at 22.6 mbar.
The gas meter is located in an external GRP meter box on the West side of the old building and the ECV is located inside this meter box.
The demarcation points between EGDN and MAM responsibility is the ECV. The demarcation point between MAM and MoD responsibility is the meter outlet valve.

Meter – Elster BK-G25 M
S/N- M040K04279 14 D6
40m3/hr
MPRN – 67076409

The meter outlet pipework is 2" steel and this continues in 2" steel internally through the workshops all the way to the internal plant room where the gas supply feeds 3 x heating boilers and 1 x water heater with a total KW input of 215 KW.

Single Supply Meter 002 – New Building

The new building is fed by a single low pressure natural gas supply from the EGDN network. This feeds an individual MAM owned and operated gas meter and regulator which supplies gas to the plant room, Galley, Store and Caretakers flat with a total of 6 appliances at 22.9mbar.
The gas meter is located in an internal gas meter room within the new building and the ECV is located within the meter room.
The demarcation points between EGDN and MAM responsibility is the ECV. The demarcation point between MAM and MoD responsibility is the meter outlet valve.

Meter – Elster BK-G16M
S/N- M025K04096 14 D6
25m3/hr

Unique Document Reference:
WX01-A-20211006
Issued by DIO TS PGE

Establishment: Barnstaple ARC ACF ATC

MPRN – 4237317108

The meter outlet pipework is 54mm copper and after about 2 metres there is a tee piece with 2 x 35mm copper feeds to various areas of the building.
One section feeds the Plant Room and the Galley, and the other section feeds the ACF store and Caretakers Flat.
There are 6 appliances fed from this meter with a total KW input of 213.3 KW.

2.3 LPG Gas.

A brief description of the LPG installations, including how many compounds are at the establishment, condition and make up of each compound, the number and size (kg) of vessels in each compound, the number of LPG MOD networks, the number of buildings supplied from the LPG MOD networks, how many buildings are supplied direct and not from an LPG MOD network. Details of the LPG pipework after the first stage regulator up to the building(s).

Note: The demarcation agreement between the LPG supplier and the MOD has been agreed and the MOD take responsibility from the outlet of the first stage regulator. The LPG supplier is responsible for the vessel, vessel associated components (excluding any earth bonding) pipework up to and including the first stage regulator.

No LPG on this establishment

2.4 External Installation Pipework.

A brief description of the external installation pipework (above or below ground) on each building. This is from the ECV to where it enters the building(s), the material, diameter, lengths, supports, conditions etc.

Single Supply Meter 001 – There is a section of 2" steel that exits the meter box and runs along the external wall for 2 metres before entering the building. This pipework is in sound condition and is well supported but would benefit from a clean up and re-paint.

2.5 Details of buildings served.

A list of the buildings being supplied by gas via an MOD network, LPG compound or directly from the EGDN and the usage of the gas (catering, hot water, heating, fire training, etc) at the building.

Ser	Building Number	Building description	Supplied by	Gas usage
1	Old Building	Office space, meeting/conference rooms, stores, garages and drill hall.	EGDN Network	Heating & Hot water
2	New Building	Classrooms, offices, kitchen and accommodation	EGDN Network	Heating, hot water and catering

Unique Document Reference:
WX01-A-20211006
Issued by DIO TS PGE

Establishment: Barnstaple ARC ACF ATC

2.6 Additional details of buildings being served.

Any additional detail about a building that may be required or useful in an emergency or requires more details than captured above.

NOTE: This section is to be used to capture the Service Family Accommodation (SFA) properties where it is not practical to fit above.

N/A

Unique Document Reference:

Establishment: Barnstaple ARC ACF ATC

WX01-A-20211006

Issued by DIO TS PGE

3 METER DETAILS**3.1 Primary Meter Details.**

The following table describes the basic arrangement of the primary meter installation(s). (These are the responsibility of the MAM)

NOTE: More detail on the primary meters that supply MOD networks can be seen in the GSMP part B.

Number of primary meter installations:		2 (EGDN Single Supply)							
Meter Name / ID	MPRN	Supplying (MOD network ID or Bldg number)	location	Incoming pressure tier – HP, IP, MP, LP	Outlet pipeline				Max Flow (M ³ hr)
					P tier – HP, IP, MP, LP	Pressure (mbar)	Material	Diameter (mm)	
Single Supply 001	67076409	Old Building	External Meter Box on West side of Old Building	LP	LP	22.6	Steel	50	40
Single Supply 002	4237317108	New Building	Internal Meter Cupboard within New Building	LP	LP	22.9	copper	54	25

3.2 Utilisation Meter Details. (meters supplied directly from the MOD gas network)

The following table describes the basic arrangement of the utilisation meter installation(s). (These are the responsibility of the MOD)

Number of utilisation meter installations:		N/A – No utilisation meter on Site								
Meter Name / ID	Being supplied from (MOD network ID)	Inlet pipeline				Outlet pipework				Max Flow (M ³ hr)
		P tier – HP, IP, MP, LP	Pressure (mbar)	Material	Diameter (mm)	P tier – HP, IP, MP, LP	Pressure (mbar)	Material	Diameter (mm)	

Unique Document Reference:
WX01-A-20211006
Issued by DIO TS PGE


Establishment: Barnstaple ARC ACF ATC

4 DIAGRAMS AND DRAWINGS

4.1 Line diagrams for building(s) internal gas installation pipework.

This section is to contain line diagrams for building internal installation pipework and associated components. This diagram should be fixed to the building at a practical and accessible location as well as within any associated document centres. It may be embedded as a PDF to this document for online use.

NOTE: Drawings are only required for commercial installations or for installation in commercial settings (non-domestic use). This may mean more installations than listed in IGEM/UP/2 Edition 3 (4.2.14), depending on the installations intended use.

Drawing Number	Building	Comments
WX01-A-A3	Old Building	Not to Scale Gas Line Drawing
WX01-A-A3	New Building	Not to Scale Gas Line Drawing
		 WX01-A-A3.pdf

4.2 Additional drawings.

This section is to contain any additional drawings that may be required or may be of benefit to this GSMP or emergency procedures.

Drawing Number	Building	Comments

5 GAS INCIDENTS

5.1 Site reporting procedures for dealing with gas incidents.

This section is to contain the establishment's site-specific procedure for dealing with reports of gas incidents with regards the external installation pipework, internal installation pipework and equipment. Details of all individuals with responsibilities under this procedure should be included.

Procedure for an incident involving the gas installations on site:

- Call VIVO Helpdesk line on 0800 317 960, open 24 hours per day.
- The VIVO Helpdesk will call the EGDN who shall attend and make safe a gas incident.
- VIVO Gas Responsible Person shall be informed immediately by the site personnel and a Text alert

Unique Document Reference:

Establishment: Barnstaple ARC ACF ATC

WX01-A-20211006

Issued by DIO TS PGE

6 GAS EQUIPMENT

6.1 Equipment List.

This section is to include details of all the gas equipment being used at the establishment.

Building number	Equipment location	Equipment type (make, model)	Serial Number	Appliance kW rating	Flue classification	Comments
EGDN Single Supply 001						
Old Building	Plant Room	Ideal Concorde Super Series 3 150 Module Boiler	TBC	50	Open Flue	Module 1 of 3
Old Building	Plant Room	Ideal Concorde Super Series 3 150 Module Boiler	TBC	50	Open Flue	Module 2 of 3
Old Building	Plant Room	Ideal Concorde Super Series 3 150 Module Boiler	TBC	50	Open Flue	Module 3 of 3
Old Building	Plant Room	Andrews ECOFlo EC230/600 GB Water Heater	ZD51203205	36.6	Room Sealed	
EGDN Single Supply 002						
New Building	Boiler Room	Remeha Quinta ACE 90 Heating Boiler	1920421820820	89.5	Room sealed	
New Building	Galley	Blue Seal GT46 Deep Fat Fryer	303735	25	Flueless – Canopy Extract	
New Building	Galley	Blue Seal G91B Grill	407931	8.8	Flueless – Canopy Extract	
New Building	Galley	Blue Seal G50D 6 Burner Range	302919	36	Flueless – Canopy Extract	
New Building	ACF Storeroom	Vaillant Ecotec Plus 624 Heating Boiler	2107483085261300010 933N3	24	Room sealed	
New Building	Caretakers Flat	Ideal Logic Combi 30 Combi Boiler	20458900017796	30	Room sealed	

Unique Document Reference:
WX01-A-20211006
Issued by DIO TS PGE

Establishment: Barnstaple ARC ACF ATC

6.2 Additional equipment information.

This section is to contain any additional equipment information that may be required or may be of benefit to this GSMP or emergency procedures.

Safety shut off valves are required to be frequently checked every year in accordance with CRFCA hard FM task list:

160418-GL-EST-Task2Ser9-GasApplianceandPipework

A list of the checks is captured below.



160418-GL-EST-Task
2Ser09-GasAppliance

Kitchen Canopy Gas Interlock installed in Main Building Kitchen, with SSOV and emergency stop button by exit door. Confirmed as working on annual gas maintenance checks by inspection by supply chain Allsop and Pitts on 24/05/2024.



RMR DORSET
HOUSE JB50310 5545

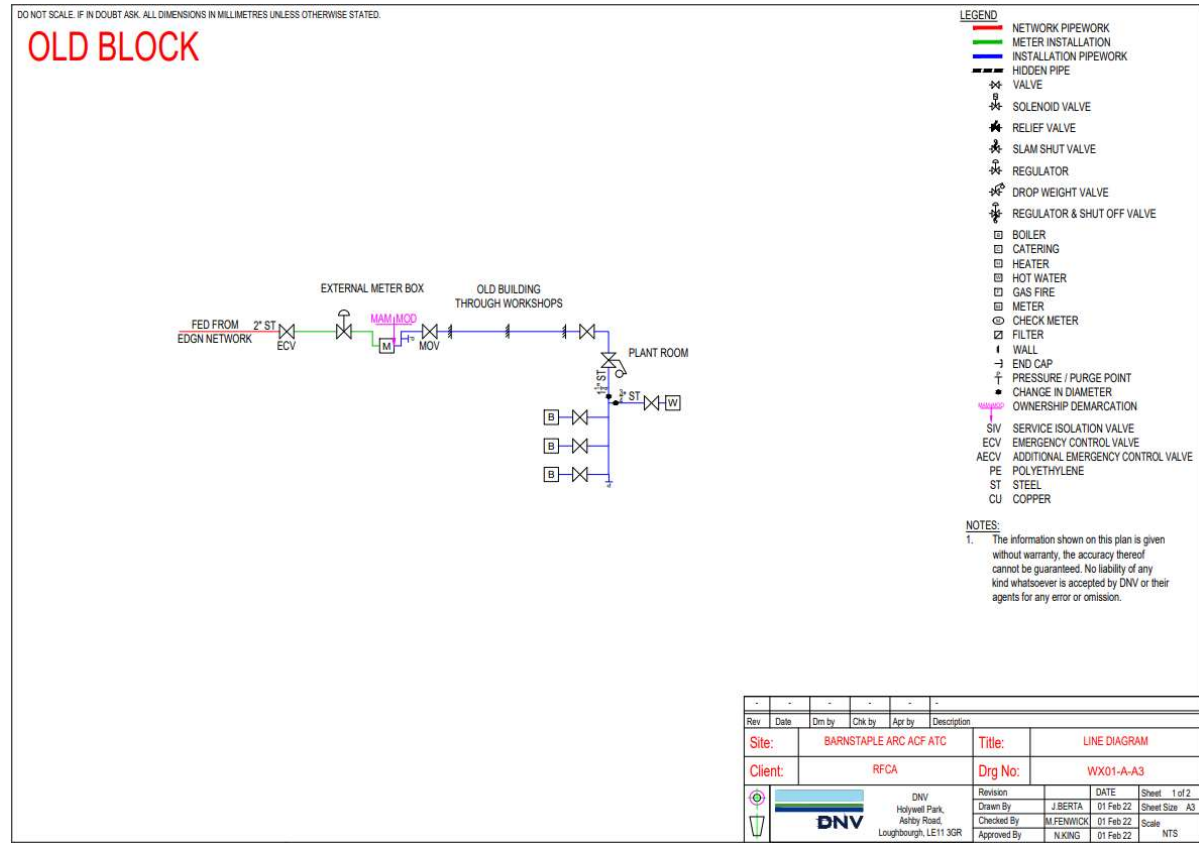
Unique Document Reference:
WX01-A-20211006
Issued by DIO TS PGE

Establishment: Barnstaple ARC ACF ATC

7 ANNEXES

Gas Line Drawings

Old Building



Unique Document Reference:
WX01-A-20211006
Issued by DIO TS PGE

Establishment: Barnstaple ARC ACF ATC

New Building

