

**Project Number A-00527 (3700)**

**Re-Inspection  
Asbestos Survey Report - Revised**

**6th Battalion the Rifles D  
York Road  
Devon  
TQ4 5NJ**



Working in Partnership with Shield Services Group



Document Name	Author	Issued by	Revision Number	Issue Date	Page No
2021	David Kelly	Armour AS	1	23/10/2021	1

## **Contents**

<b>Section</b>	
<b>1</b>	<b>Contact Details</b>
<b>2</b>	<b>Executive Summary</b>
<b>3</b>	<b>Site Description &amp; Survey Information</b>
<b>4</b>	<b>Positive, Presumed or No Access Items</b>
<b>5</b>	<b>Negative Photos Sheets</b>
<b>6</b>	<b>Survey Objectives</b>
<b>7</b>	<b>Survey Notes</b>
<b>8</b>	<b>Material Assessment Algorithm</b>
<b>9</b>	<b>Certificates of Bulk Analysis</b>
<b>10</b>	<b>Site Plan</b>

Document Name	Author	Issued by	Revision Number	Issue Date	Page No
2021	David Kelly	Armour AS	1	23/10/2021	2

## **Section 1: Contact Details**

<b>Client Details:</b>		<b>Instructing Party:</b>	
Wessex RFCA Mount House Mount Street Taunton TA1 3QE		Wessex RFCA Mount House Mount Street Taunton TA1 3QE	
<b>Contact Name:</b>	Kelvin Walker	<b>Contact Name:</b>	Kelvin Walker
<b>Tel:</b> 01823 250 116	<b>Fax:</b> N/A	<b>Tel:</b> 0823 250 116	<b>Fax:</b> N/A

<b>Site Address:</b>		<b>Report Author:</b>	
6th Battalion the Rifles D York Road Devon TQ4 5NJ		Armour Analytical Services Admirals Yard Station Road Bristol BS34 6LR	
<b>Contact Name:</b>	Kelvin Walker	<b>Contact Name:</b>	Andrea Bansee
<b>Tel:</b> 01823 250 116	<b>Fax:</b> N/A	<b>Mobile:</b> 07468 535 836	

<b>Lead Surveyor's Name:</b>	<b>Lead Surveyor's Authorising Signature:</b>
David Kelly	

Document Name	Author	Issued by	Revision Number	Issue Date	Page No
2021	David Kelly	Armour AS	1	23/10/2021	3

## **Section 2: Executive Summary**

Sample Number	Sample Type	Location	Analysis
DK/01	Stair nosing - PVC / Reinforced Plastics	First Floor Caretakers Flat - Corridor 011	N.A.D.I.S
DK/02	Wall Panels - Insulating Board	Second Floor Caretakers Flat - Landing and WC 013	N.A.D.I.S
DK/03	Floor Tiles and Adhesive - Vinyl Products	Second Floor Caretakers Flat - Landing and WC 015	N.A.D.I.S
DK/04	Wall Panels - Insulating Board	Ground Floor Lobby, Office, and Store 009	N.A.D.I.S
DK/05	Floor Tiles - Vinyl Products	Ground Floor Stores x 2 006	N.A.D.I.S
DK/06	Walls and Boxing Panels - Insulating Board	Ground Floor Stores x 2 017	N.A.D.I.S
DK/14	Bitumen to Floor	External Sea Cadet Stores x 2 008	N.A.D.I.S

N.A.D.I.S – No Asbestos Detected in Sample

In addition to the above sampled items, the following items have been either been “Strongly Presumed” To Contain Asbestos or “Presumed” to Contain Asbestos as they were either visually identified in being so, labelled after previously being sampled on prior surveys or not accessible at the time of the survey:

Status	Sample Type	Location
Previously Sampled	Gaskets - Gaskets (compressed)	First Floor Boiler Room 002
Presumed	Sink Pad - Bituminous Product	First Floor Bar 004
Presumed	All - No Access Gained	First Floor Service Lift 005
Presumed	All - No Access Gained	First Floor Sweet Electric Room 010
Previously Sampled	Wall Panels - No asbestos suspected	Second Floor Caretakers Flat - Lobby 001
Strongly Presumed	Promenade Tiles - Cement Product	External Flat Roof 016

The presence of asbestos in these areas cannot be ascertained at this time. If any works are to be carried out in these areas in the future, then these works should be approached cautiously.

In accordance with current legislation, any suspect materials encountered in these areas are to be assumed to contain asbestos until proven otherwise. This will normally involve cessation of works in the affected area.

Document Name	Author	Issued by	Revision Number	Issue Date	Page No
2021	David Kelly	Armour AS	1	23/10/2021	4

## **Section 3: Site Description & Survey Information**

### **Brief description on the general building construction**

Brick construction with a part pitched part flat roof.

### **Caveat for no access areas**

All areas accessed.

### **EXTERNAL MATERIALS**

Roof Type	Pitched, Flat
Roof Materials	Cement Tiles, Felt
Soffits	Timber
Fascia	Timber
Walls	Brick
Verge Under cloaking	N/A
Guttering	Plastic
Downpipes	Plastic
Window/Door frames	Aluminum, UPVC
Other Materials	N/A

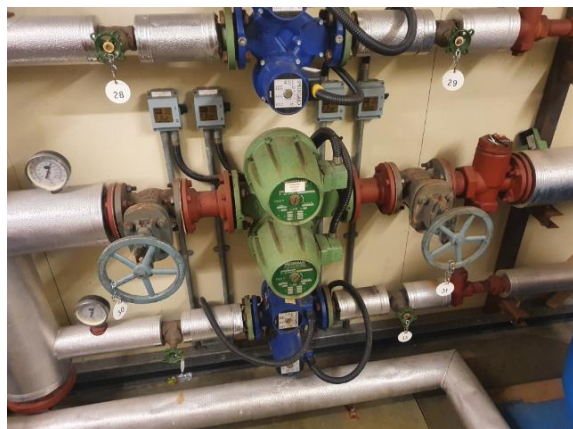
### **INTERNAL MATERIALS**

Loft Insulation	Fiberglass
Roof Underlining	No asbestos felt
Ceilings	Non-Asbestos Cement, Plasterboard, Lath and Plaster
Walls <i>Internal</i>	Non-Asbestos Cement , Plasterboard, Lath and Plaster, Timber
Floors	Carpet, Lino, Tiles, Screed, Timber
Doors/Frames	Timber, Metal
Pipework/Insulation	MMMF, Armaflex
Boxings	Non-Asbestos Cement, Timber, Plasterboard
Boiler Make	Non asbestos boiler
Flue Pipes	Metal
Storage Heaters	Modern
Electrical Boxes/Machinery	Modern
Ducting/Risers	N/A
Stairs	Concrete, Timber
Lift Shafts	No access
Other Materials	N/A

Document Name	Author	Issued by	Revision Number	Issue Date	Page No
2021	David Kelly	Armour AS	1	23/10/2021	5

## Section 4: Positive, Presumed or No Access Items

<b>Item No:</b>	<b>2</b>	<b>Sample No:</b>	<b>N/A</b>
<b>Location:</b>	First Floor - Boiler Room 002		



<b>Material Description:</b>	Gaskets - Gaskets (compressed)	
<b>Identification:</b>	Previously Sampled - Asbestos Detected	
<b>Approx. quantity:</b>	20+ no	
<b>Accessibility</b>	Difficult	Assessment Score
<b>Product type:</b>	Paper	2
<b>Extent of Damage:</b>	Moderate damage	2
<b>Surface Treatment:</b>	Woven Material	1
<b>Asbestos type:</b>	Chrysotile	1
<b>Material Assessment Score:</b>		6
<b>Priority Assessment Score:</b>		Low
<b>Action:</b>	Encapsulate	
<b>Comments:</b>	Previously sampled ref I: Armour 15/1/20 Sample DK/10	

Document Name	Author	Issued by	Revision Number	Issue Date	Page No
2021	David Kelly	Armour AS	1	23/10/2021	6

**Item No:** 4 **Sample No:** N/A

**Location:** First Floor - Bar 004



<b>Material Description:</b>	Sink Pad - Bituminous Product	
<b>Identification:</b>	Presumed to Contain Asbestos	
<b>Approx. quantity:</b>	1 no	
<b>Accessibility</b>	Medium	<i>Assessment Score</i>
<b>Product type:</b>	Bitumen	1
<b>Extent of Damage:</b>	Slight / minor damage	1
<b>Surface Treatment:</b>	Woven Material	1
<b>Asbestos type:</b>	Chrysotile	1
<b>Material Assessment Score:</b>		4
<b>Priority Assessment Score:</b>		Negligible
<b>Action:</b>	Manage	
<b>Comments:</b>	No access under sink to sample sink pad as door is blocked by a table leg	

Document Name	Author	Issued by	Revision Number	Issue Date	Page No
2021	David Kelly	Armour AS	1	23/10/2021	7

**Item No:** 5 **Sample No:** N/A

**Location:** First Floor - Service Lift 005



<b>Material Description:</b>	All - No Access Gained	
<b>Identification:</b>	Presumed to Contain Asbestos	
<b>Approx. quantity:</b>	1 no	
<b>Accessibility</b>	Difficult	<i>Assessment Score</i>
<b>Product type:</b>	Pipe Insulation	3
<b>Extent of Damage:</b>	Major damage	3
<b>Surface Treatment:</b>	Unsealed Insulation	3
<b>Asbestos type:</b>	Amosite, Chrysotile, Crocidolite	3
<b>Material Assessment Score:</b>		12
<b>Priority Assessment Score:</b>		High
<b>Action:</b>	Further Investigation Needed	
<b>Comments:</b>	No safe access to inspect service lift	

Document Name	Author	Issued by	Revision Number	Issue Date	Page No
2021	David Kelly	Armour AS	1	23/10/2021	8

**Item No:** 10

**Sample No:** N/A

**Location:** First Floor - Sweet Electric Room 010



<b>Material Description:</b>	All - No Access Gained	
<b>Identification:</b>	Presumed to Contain Asbestos	
<b>Approx. quantity:</b>	1 no	
<b>Accessibility</b>	Difficult	<i>Assessment Score</i>
<b>Product type:</b>	Pipe Insulation	3
<b>Extent of Damage:</b>	Major damage	3
<b>Surface Treatment:</b>	Unsealed Insulation	3
<b>Asbestos type:</b>	Amosite, Chrysotile, Crocidolite	3
<b>Material Assessment Score:</b>		12
<b>Priority Assessment Score:</b>		High
<b>Action:</b>	Further Investigation Needed	
<b>Comments:</b>	Access is only possible via Sweb, who were not present on site during the survey	

Document Name	Author	Issued by	Revision Number	Issue Date	Page No
2021	David Kelly	Armour AS	1	23/10/2021	9

**Item No:** 16

**Sample No:** N/A

**Location:** External - Flat Roof 016

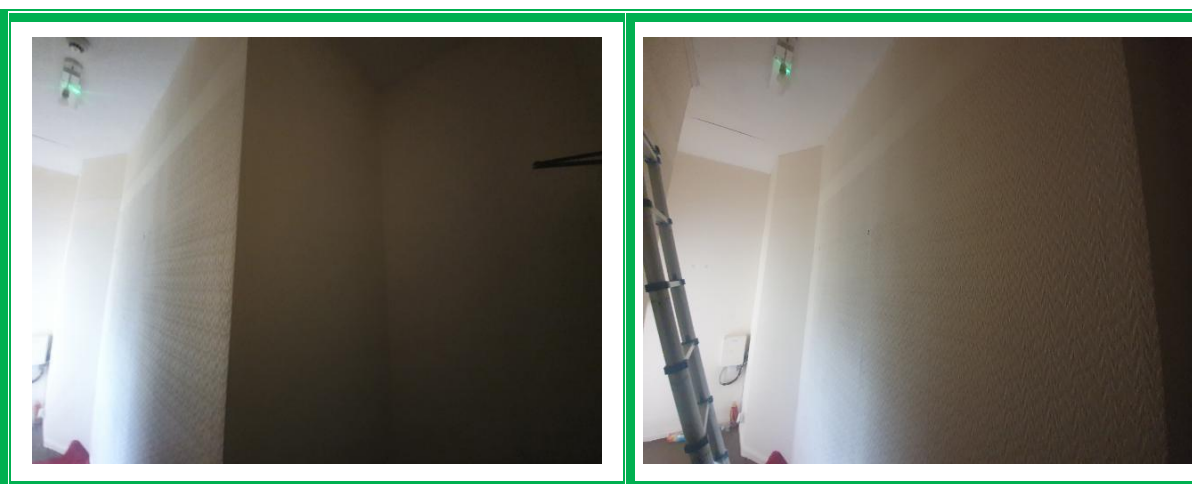


<b>Material Description:</b>	Promenade Tiles - Cement Product	
<b>Identification:</b>	Strongly Presumed to Contain Asbestos	
<b>Approx. quantity:</b>	100 m <sup>2</sup>	
<b>Accessibility</b>	Difficult	<i>Assessment Score</i>
<b>Product type:</b>	Cement	1
<b>Extent of Damage:</b>	Slight / minor damage	1
<b>Surface Treatment:</b>	Unsealed Cement	1
<b>Asbestos type:</b>	Chrysotile	1
<b>Material Assessment Score:</b>		4
<b>Priority Assessment Score:</b>		Negligible
<b>Action:</b>	Manage	
<b>Comments:</b>	No access to sample due to height restrictions	

Document Name	Author	Issued by	Revision Number	Issue Date	Page No
2021	David Kelly	Armour AS	1	23/10/2021	10

## Section 5: Negative Items

<b>Item No:</b>	<b>1</b>	<b>Sample No:</b>	<b>N/A</b>
<b>Location:</b>	Second Floor - Caretakers Flat - Lobby 001		



<b>Material Description:</b>	Wall Panels - No asbestos suspected	
<b>Identification:</b>	N/A	
<b>Approx. quantity:</b>	N/A	
<b>Accessibility</b>	N/A	<i>Assessment Score</i>
<b>Product type:</b>	N/A	N/A
<b>Extent of Damage:</b>	N/A	N/A
<b>Surface Treatment:</b>	N/A	N/A
<b>Asbestos type:</b>	N/A	N/A
<b>Material Assessment Score:</b>		N/A
<b>Priority Assessment Score:</b>		N/A
<b>Action:</b>	N/A	
<b>Comments:</b>	Previously sampled ref: Armour 15/1/20 sample DK/3	

Document Name	Author	Issued by	Revision Number	Issue Date	Page No
2021	David Kelly	Armour AS	1	23/10/2021	11

**Item No:** 3

**Sample No:** N/A

**Location:** First Floor - ACF Stores x 2 003



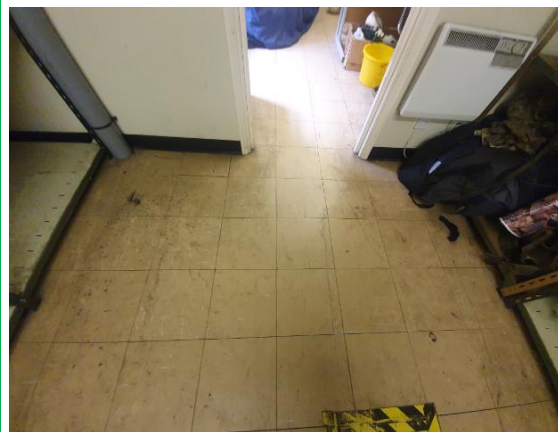
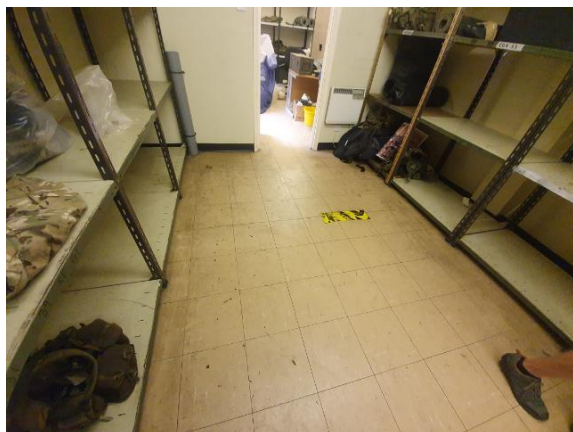
<b>Material Description:</b>	No Asbestos Suspected	
<b>Identification:</b>	Previously Sampled – Reference Sample DK/3 15/10/2020	
<b>Approx. quantity:</b>	N/A	
<b>Accessibility</b>	N/A	<i>Assessment Score</i>
<b>Product type:</b>	N/A	N/A
<b>Extent of Damage:</b>	N/A	N/A
<b>Surface Treatment:</b>	N/A	N/A
<b>Asbestos type:</b>	N/A	N/A
<b>Material Assessment Score:</b>		N/A
<b>Priority Assessment Score:</b>		N/A
<b>Action:</b>	N/A	
<b>Comments:</b>	Previously a no access area, now accessed.	

Document Name	Author	Issued by	Revision Number	Issue Date	Page No
2021	David Kelly	Armour AS	1	23/10/2021	12

**Item No:** 6

**Sample No:** DK/05

**Location:** Ground Floor - Stores x 2 006



<b>Material Description:</b>	Floor Tiles - Vinyl Products	
<b>Identification:</b>	Sampled - No Asbestos Found	
<b>Approx. quantity:</b>	N/A	
<b>Accessibility</b>	N/A	Assessment Score
<b>Product type:</b>	N/A	N/A
<b>Extent of Damage:</b>	N/A	N/A
<b>Surface Treatment:</b>	N/A	N/A
<b>Asbestos type:</b>	N/A	N/A
<b>Material Assessment Score:</b>		N/A
<b>Priority Assessment Score:</b>		N/A
<b>Action:</b>	N/A	
<b>Comments:</b>	N/A	

Document Name	Author	Issued by	Revision Number	Issue Date	Page No
2021	David Kelly	Armour AS	1	23/10/2021	13

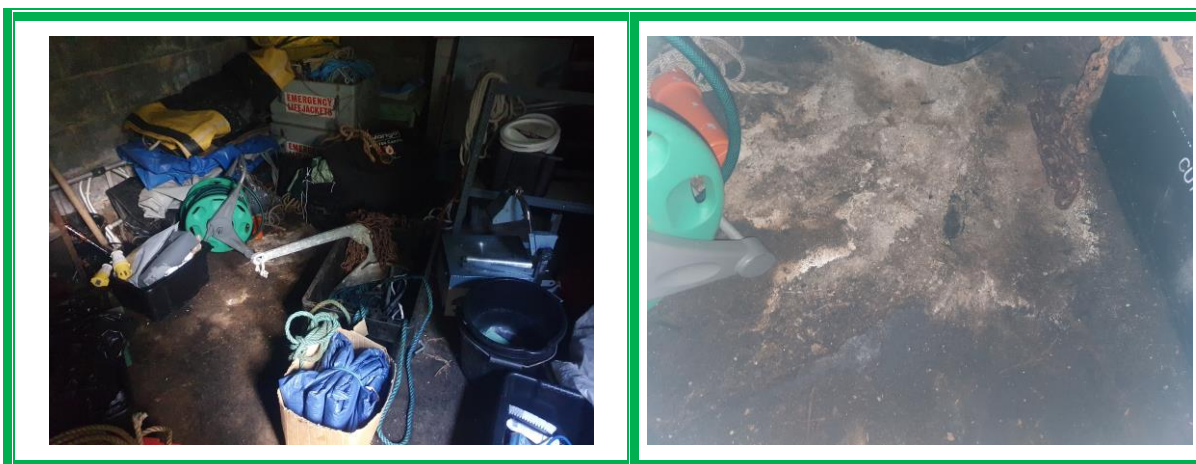
<b>Item No:</b>	<b>7</b>	<b>Sample No:</b>	<b>N/A</b>
<b>Location:</b>	Ground Floor - Armoury Store and Armoury's x 2 007		



<b>Material Description:</b>	No Suspect Materials Found	
<b>Identification:</b>	N/A	
<b>Approx. quantity:</b>	N/A	
<b>Accessibility</b>	N/A	<i>Assessment Score</i>
<b>Product type:</b>	N/A	N/A
<b>Extent of Damage:</b>	N/A	N/A
<b>Surface Treatment:</b>	N/A	N/A
<b>Asbestos type:</b>	N/A	N/A
<b>Material Assessment Score:</b>		N/A
<b>Priority Assessment Score:</b>		N/A
<b>Action:</b>	N/A	
<b>Comments:</b>	N/A	

Document Name	Author	Issued by	Revision Number	Issue Date	Page No
2021	David Kelly	Armour AS	1	23/10/2021	14

<b>Item No:</b>	<b>8</b>	<b>Sample No:</b>	<b>DK/14</b>
<b>Location:</b>	External Sea Cadet Stores x 2 008		



<b>Material Description:</b>	No Asbestos Suspected	
<b>Identification:</b>	Sampled – No Asbestos Suspected	
<b>Approx. quantity:</b>	N/A	
<b>Accessibility</b>	N/A	<i>Assessment Score</i>
<b>Product type:</b>	N/A	N/A
<b>Extent of Damage:</b>	N/A	N/A
<b>Surface Treatment:</b>	N/A	N/A
<b>Asbestos type:</b>	N/A	N/A
<b>Material Assessment Score:</b>		N/A
<b>Priority Assessment Score:</b>		N/A
<b>Action:</b>	N/A	
<b>Comments:</b>	Previously a no access area, now accessed.	

<b>Item No:</b>	<b>9</b>	<b>Sample No:</b>	<b>DK/04</b>
-----------------	----------	-------------------	--------------

Document Name	Author	Issued by	Revision Number	Issue Date	Page No
2021	David Kelly	Armour AS	1	23/10/2021	15

**Location:** Ground Floor - Lobby, Office, and Store 009



<b>Material Description:</b>	Wall Panels - Insulating Board	
<b>Identification:</b>	Sampled - No Asbestos Found	
<b>Approx. quantity:</b>	N/A	
<b>Accessibility</b>	N/A	<i>Assessment Score</i>
<b>Product type:</b>	N/A	N/A
<b>Extent of Damage:</b>	N/A	N/A
<b>Surface Treatment:</b>	N/A	N/A
<b>Asbestos type:</b>	N/A	N/A
<b>Material Assessment Score:</b>		N/A
<b>Priority Assessment Score:</b>		N/A
<b>Action:</b>	N/A	
<b>Comments:</b>	Non asbestos insulation board panels in store and office. Sampled for reassurance purposes only	

Document Name	Author	Issued by	Revision Number	Issue Date	Page No
2021	David Kelly	Armour AS	1	23/10/2021	16

**Item No:** 11

**Sample No:** DK/01

**Location:** First Floor - Caretakers Flat - Corridor 011



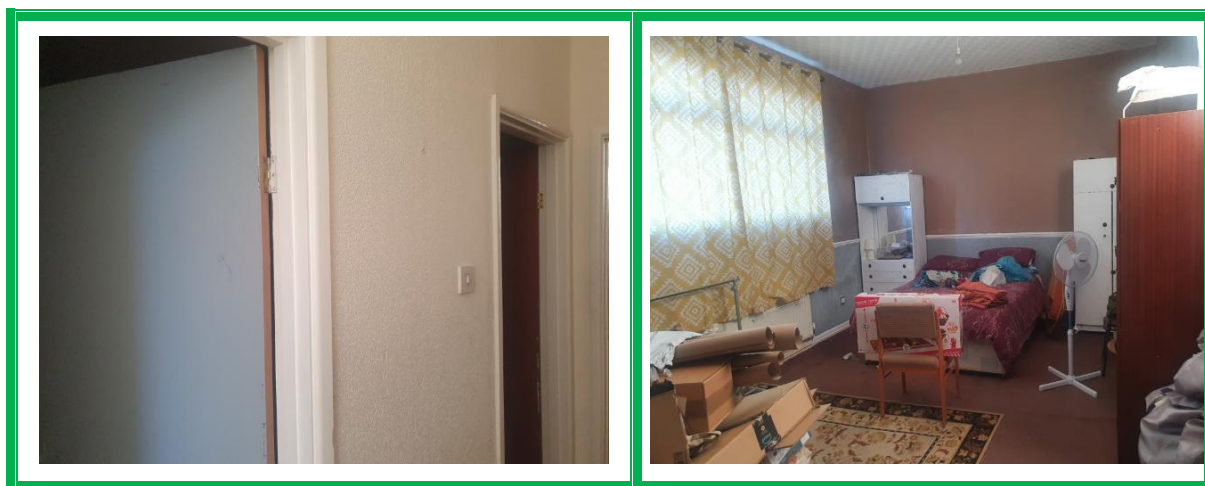
<b>Material Description:</b>	Stair nosing - PVC / Reinforced Plastics	
<b>Identification:</b>	Sampled - No Asbestos Found	
<b>Approx. quantity:</b>	N/A	
<b>Accessibility</b>	N/A	<i>Assessment Score</i>
<b>Product type:</b>	N/A	N/A
<b>Extent of Damage:</b>	N/A	N/A
<b>Surface Treatment:</b>	N/A	N/A
<b>Asbestos type:</b>	N/A	N/A
<b>Material Assessment Score:</b>		N/A
<b>Priority Assessment Score:</b>		N/A
<b>Action:</b>	N/A	
<b>Comments:</b>	N/A	

Document Name	Author	Issued by	Revision Number	Issue Date	Page No
2021	David Kelly	Armour AS	1	23/10/2021	17

**Item No:** 12

**Sample No:** N/A

**Location:** First Floor - Caretakers Flat - Rooms x 3 012



<b>Material Description:</b>	No Suspect Materials Found	
<b>Identification:</b>	N/A	
<b>Approx. quantity:</b>	N/A	
<b>Accessibility</b>	N/A	<i>Assessment Score</i>
<b>Product type:</b>	N/A	N/A
<b>Extent of Damage:</b>	N/A	N/A
<b>Surface Treatment:</b>	N/A	N/A
<b>Asbestos type:</b>	N/A	N/A
<b>Material Assessment Score:</b>		N/A
<b>Priority Assessment Score:</b>		N/A
<b>Action:</b>	N/A	
<b>Comments:</b>	N/A	

Document Name	Author	Issued by	Revision Number	Issue Date	Page No
2021	David Kelly	Armour AS	1	23/10/2021	18

<b>Item No:</b>	<b>13</b>	<b>Sample No:</b>	<b>DK/02</b>
<b>Location:</b>	Second Floor - Caretakers Flat - Landing and WC 013		



<b>Material Description:</b>	Wall Panels - Insulating Board	
<b>Identification:</b>	Sampled - No Asbestos Found	
<b>Approx. quantity:</b>	N/A	
<b>Accessibility</b>	N/A	<i>Assessment Score</i>
<b>Product type:</b>	N/A	N/A
<b>Extent of Damage:</b>	N/A	N/A
<b>Surface Treatment:</b>	N/A	N/A
<b>Asbestos type:</b>	N/A	N/A
<b>Material Assessment Score:</b>		N/A
<b>Priority Assessment Score:</b>		N/A
<b>Action:</b>	N/A	
<b>Comments:</b>	Located to 2 walls	

Document Name	Author	Issued by	Revision Number	Issue Date	Page No
2021	David Kelly	Armour AS	1	23/10/2021	19

**Item No:** 14

**Sample No:** N/A

**Location:** Second Floor - Caretakers Flat - Living Room and Bedroom 014



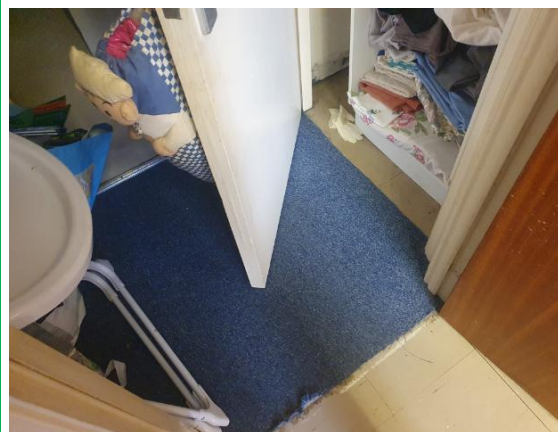
<b>Material Description:</b>	No Suspect Materials Found	
<b>Identification:</b>	N/A	
<b>Approx. quantity:</b>	N/A	
<b>Accessibility</b>	N/A	<i>Assessment Score</i>
<b>Product type:</b>	N/A	N/A
<b>Extent of Damage:</b>	N/A	N/A
<b>Surface Treatment:</b>	N/A	N/A
<b>Asbestos type:</b>	N/A	N/A
<b>Material Assessment Score:</b>		N/A
<b>Priority Assessment Score:</b>		N/A
<b>Action:</b>	N/A	
<b>Comments:</b>	N/A	

Document Name	Author	Issued by	Revision Number	Issue Date	Page No
2021	David Kelly	Armour AS	1	23/10/2021	20

**Item No:** 15

**Sample No:** DK/03

**Location:** Second Floor - Caretakers Flat – Kitchen, Bathroom, Store and Cupboard 015



<b>Material Description:</b>	Floor Tiles and Adhesive - Vinyl Products	
<b>Identification:</b>	Sampled - No Asbestos Found	
<b>Approx. quantity:</b>	N/A	
<b>Accessibility</b>	N/A	<i>Assessment Score</i>
<b>Product type:</b>	N/A	N/A
<b>Extent of Damage:</b>	N/A	N/A
<b>Surface Treatment:</b>	N/A	N/A
<b>Asbestos type:</b>	N/A	N/A
<b>Material Assessment Score:</b>		N/A
<b>Priority Assessment Score:</b>		N/A
<b>Action:</b>	N/A	
<b>Comments:</b>	N/A	

Document Name	Author	Issued by	Revision Number	Issue Date	Page No
2021	David Kelly	Armour AS	1	23/10/2021	21

**Item No:** 17

**Sample No:** DK/06

**Location:** Ground Floor - Stores x 2 017



<b>Material Description:</b>	Walls and Boxing Panels - Insulating Board	
<b>Identification:</b>	Sampled - No Asbestos Found	
<b>Approx. quantity:</b>	N/A	
<b>Accessibility</b>	N/A	Assessment Score
<b>Product type:</b>	N/A	N/A
<b>Extent of Damage:</b>	N/A	N/A
<b>Surface Treatment:</b>	N/A	N/A
<b>Asbestos type:</b>	N/A	N/A
<b>Material Assessment Score:</b>		N/A
<b>Priority Assessment Score:</b>		N/A
<b>Action:</b>	N/A	
<b>Comments:</b>	N/A	

Document Name	Author	Issued by	Revision Number	Issue Date	Page No
2021	David Kelly	Armour AS	1	23/10/2021	22



## **Section 6: Survey Objectives**

Instructions were received from Kelvin Walker of Wessex RFCA to carry out a Re-Inspection asbestos survey at 6th Battalion The Rifles D, York Road, Devon, TQ4 5NJ in accordance with HSG264 and Armour Analytical's quality procedures.

The survey was carried out on 23 February 2021 by David Kelly with the objective of facilitating a Re-Inspection report.

A survey with the objective of accessing previously no accessed areas was carried out on 13 October by David Kelly.

Document Name	Author	Issued by	Revision Number	Issue Date	Page No
2021	David Kelly	Armour AS	1	23/10/2021	23



## **Section 7: Survey Notes**

This report has been written with reference to the various Guidance Notes etc, issued, and current at the date of this report and describes circumstances at the site on the date the investigation took place.

Where similar items exist in the building, only one or two samples may have been taken to ascertain the material content. It was assumed that similar products were of the same material.

Any person undertaking work within the buildings should be told of the presence of asbestos. This briefing also applies to any other person associated with the site, including staff, sub-contractors and others.

The drawings in the report are not to scale and are illustrative only to indicate approximate locations. The descriptions used are for location identification purposes.

All the recommendations described in this report are based upon assumptions made after consideration of the type of material, condition of the material, its location, analysis result and type of use the area is thought to be subjected to. However, statutory authorities or others could require amendments based on local knowledge, change in legislation, change in use or indeed other conditions or criteria.

Samples taken from floor tiles (or similar material) may include a bitumen adhesive as part of the sample. It is known that some proprietary brands of bitumen have an asbestos content and this will be included as an integral part of the bulk sample unless otherwise stated.

**Due to the artex being non-homogenous, it is recommended to treat all areas as containing asbestos if you have a positive sample of artex.**

Document Name	Author	Issued by	Revision Number	Issue Date	Page No
2021	David Kelly	Armour AS	1	23/10/2021	24

## Section 8: Material Assessment Algorithm

Variable	Score	Examples
Product type	1	Vinyl, 'Bakelite', Cement, Textured Coating, Non-Friable Debris, Floor Tiles, Bitumen, Reinforced Plastics, Mastic (putty), Windowsills
	2	Asbestos Insulating Board, Paper, Rope, Burned Cement Debris, Flashguards, Gaskets
	3	Pipe Insulation, Spray Coating, Friable Debris, Loose Fill Asbestos
Condition / Damage	0	Good
	1	Slight / Minor Damage
	2	Moderate Damage – Breakage to Surface Treatment
	3	Major Damage – Smashed or Exposed Material
Surface Treatment	0	Non-Friable E.G. Vinyl
	1	Enclosed Insulation, Encapsulated AIB, Unsealed Cement, Woven Material, Paper
	2	Unsealed AIB, Encapsulated Insulation, Encapsulated Pipe Lagging
	3	Unsealed Insulation, Spray Coating, Unsealed Pipe Lagging
Asbestos Type	1	Chrysotile
	2	Amosite & Other Amphiboles
	3	Crocidolite

The scores from each of the four sections are added together to produce a risk score:

Risk score	Risk assessment
<b>10 or more</b>	High risk
<b>7 – 9</b>	Medium risk
<b>5 – 6</b>	Low risk
<b>4 &amp; below</b>	Negligible risk

## Section 9: Certificates of Bulk Analysis



Our Ref: J203890 FI: 6  
Your Ref: 3700  
Date: 01/03/2021

**ENVIROCHEM**  
Analytical Laboratories Ltd.  
12 The Gardens  
Broadcut, Fareham  
Hampshire  
PO16 8SS



1227  
Tel: (01329) 287777  
Fax: (01329) 287755  
www.envirochem.co.uk  
office@envirochem.co.uk

### Asbestos Fibre Identification Report

**Client:** Armour Analytical Services Ltd  
Admirals Yard, Station Road, Patchway, Bristol, BS34 6LR  
**Site Address:** 6th Battalion, York Road, TQ4 5NJ  
**Sampled By:** Armour Analytical Services Ltd  
**Date sampled/received:** 26th February 2021  
**Date analysed:** 1st March 2021  
**Analyst/s:** Matt Hurst  
**Analysis Location:** 12 The Gardens, Broadcut, Fareham, Hampshire, PO16 8SS

#### ANALYTICAL PROCEDURE

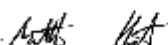
Fibre identification was carried out in accordance with the documented 'in-house' method (2.01) based on the HSE Guidance Note HSG 248. These employed stereo microscopy, polarized microscopy and dispersion staining techniques.

#### RESULTS

Sample No.	Sample Ref.	Location	Asbestos Detected	Asbestos Type
DK/01	BS658707	Caretakers flat. Corridor. Stair nosing	No	
DK/02	BS658708	Caretakers flat. Landing and WCs. Wall panels	No	
DK/03	BS658709	Caretakers flat. Kitchen Floor tile and adhesive	No	
DK/04	BS658710	lobby office and stores. Wall panels	No	

#### NOTES:

1. Samples were examined for the presence of 6 types of asbestos fibres: crocidolite (blue), amosite (brown), chrysotile (white), anthophyllite, actinolite and tremolite.
2. The results shown in this report specifically refer to the sample(s) named as received unless otherwise stated and samples collected by the client are evaluated using information provided by the client. For samples collected by the client the date of receipt is deemed to be the same as the date sampled.
3. Envirochem is a UKAS accredited laboratory for sampling and identification of asbestos containing materials.
4. Comments, observations and opinions are outside the scope of UKAS accreditation.
5. The analytical method in the HSG248 does not quantify the amount of asbestos present, therefore UKAS accreditation does not permit quantification.
6. If, during fibre identification, only 1 or 2 fibres are seen and identified as asbestos, then the term 'trace asbestos identified' is used.
7. This report shall not be reproduced except in full, without written approval of Envirochem.

SIGNATURE:  Authorised signatory PRINT NAME: Matt Hurst

Reg. No. 2378228 England. Registered Office: Envirochem, 12 The Gardens, Broadcut, Fareham, Hampshire, PO16 8SS.

Page 1 of 2

Document Name	Author	Issued by	Revision Number	Issue Date	Page No
2021	David Kelly	Armour AS	1	23/10/2021	26



Our Ref: J203890 FI: 6  
Your Ref: 3700  
Date: 01/03/2021

**ENVIROCHEM**  
**Analytical Laboratories Ltd.**  
12 The Gardens  
Broadcut, Fareham  
Hampshire  
PO16 8SS



1227  
Tel: (01329) 287777  
Fax: (01329) 287755  
www.envirochem.co.uk  
office@envirochem.co.uk

## Asbestos Fibre Identification Report

**Client:** Armour Analytical Services Ltd  
Admirals Yard, Station Road, Patchway, Bristol, BS34 6LR  
**Site Address:** 6th Battalion, York Road, TQ4 5NJ  
**Sampled By:** Armour Analytical Services Ltd  
**Date sampled/received:** 26th February 2021  
**Date analysed:** 1st March 2021  
**Analyst/s:** Matt Hurst  
**Analysis Location:** 12 The Gardens, Broadcut, Fareham, Hampshire, PO16 8SS

### ANALYTICAL PROCEDURE

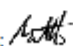

Fibre identification was carried out in accordance with the documented 'in-house' method (2.01) based on the HSE Guidance Note HSG 248. These employed stereo microscopy, polarized microscopy and dispersion staining techniques.

### RESULTS

Sample No.	Sample Ref.	Location	Asbestos Detected	Asbestos Type
DK/05	BS658711	Stores x2. Floor tiles and adhesive	No	
DK/06	BS658712	Stores x2. Wall and boxing panels	No	

#### NOTES:

1. Sample(s) were examined for the presence of 6 types of asbestos fibres: crocidolite (blue), amosite (brown), chrysotile (white), anthophyllite, actinolite and tremolite.
2. The results shown in this test report specifically refer to the sample(s) named as received unless otherwise stated and samples collected by the client are evaluated using information provided by the client. For samples collected by the client the date of receipt is deemed to be the same as the date sampled.
3. Envirochem is a UKAS accredited laboratory for sampling and identification of asbestos containing materials.
4. Comments, observations and opinions are outside the scope of UKAS accreditation.
5. The analytical method in the HSG248 does not quantify the amount of asbestos present, therefore UKAS accreditation does not permit quantification.
6. If, during fibre identification, only 1 or 2 fibres are seen and identified as asbestos, then the term 'trace asbestos identified' is used.
7. This report shall not be reproduced except in full, without written approval of Envirochem.

SIGNATURE:   Authorised signatory PRINT NAME: Matt Hurst

Reg. No. 2378228 England. Registered Office: Envirochem, 12 The Gardens, Broadcut, Fareham, Hampshire, PO16 8SS.

Document Name	Author	Issued by	Revision Number	Issue Date	Page No
2021	David Kelly	Armour AS	1	23/10/2021	27



Our Ref: J220041 Fl: 1  
Your Ref: 3700  
Date: 20/10/2021

**ENVIROCHEM**  
Analytical Laboratories Ltd.  
12 The Gardens  
Broadcut, Fareham  
Hampshire  
PO16 8SS



1227  
Tel: (01329) 287777  
Fax: (01329) 287755  
www.envirochem.co.uk  
office@envirochem.co.uk

## Asbestos Fibre Identification Report

**Client:** Armour Analytical Services Ltd  
Admirals Yard, Station Road, Patchway, Bristol, BS34 6LR  
**Site Address:** 6th Battalion, The Rifles, York Road, TQ4 5NJ  
**Sampled By:** Armour Analytical Services Ltd  
**Date sampled/received:** 18th October 2021  
**Date analysed:** 20th October 2021  
**Analyst/s:** Chloe Bowman  
**Analysis Location:** 12 The Gardens, Broadcut, Fareham, Hampshire, PO16 8SS

### ANALYTICAL PROCEDURE

Fibre identification was carried out in accordance with the documented 'in-house' method (2.01) based on the HSE Guidance Note HSG 248. These employed stereo microscopy, polarized microscopy and dispersion staining techniques.

### RESULTS

Sample No.	Sample Ref.	Location	Asbestos Detected	Asbestos Type
DK/14	BS711387	External. Sea cadet huts x 2. Bitumen to floor.	No	

#### NOTES

1. Sample(s) were examined for the presence of 8 types of asbestos fibres: crocidolite (blue), amosite (brown), chrysotile (white), anthophyllite, actinolite and tremolite.
2. The results shown in this test report specifically refer to the sample(s) tested as received unless otherwise stated and samples collected by the client are evaluated using information provided by the client. For samples collected by the client the date of receipt is deemed to be the same as the date sampled.
3. Envirochem is a UKAS accredited laboratory for sampling and identification of asbestos containing materials.
4. Comments, observations and opinions are outside the scope of UKAS accreditation.
5. The analytical method in the HSG248 does not quantify the amount of asbestos present, therefore UKAS accreditation does not permit quantification.
6. If, during fibre identification, only 1 or 2 fibres are seen and identified as asbestos, then the term 'trace asbestos identified' is used.
7. This report shall not be reproduced except in full, without written approval of Envirochem.

SIGNATURE:



Authorized signatory

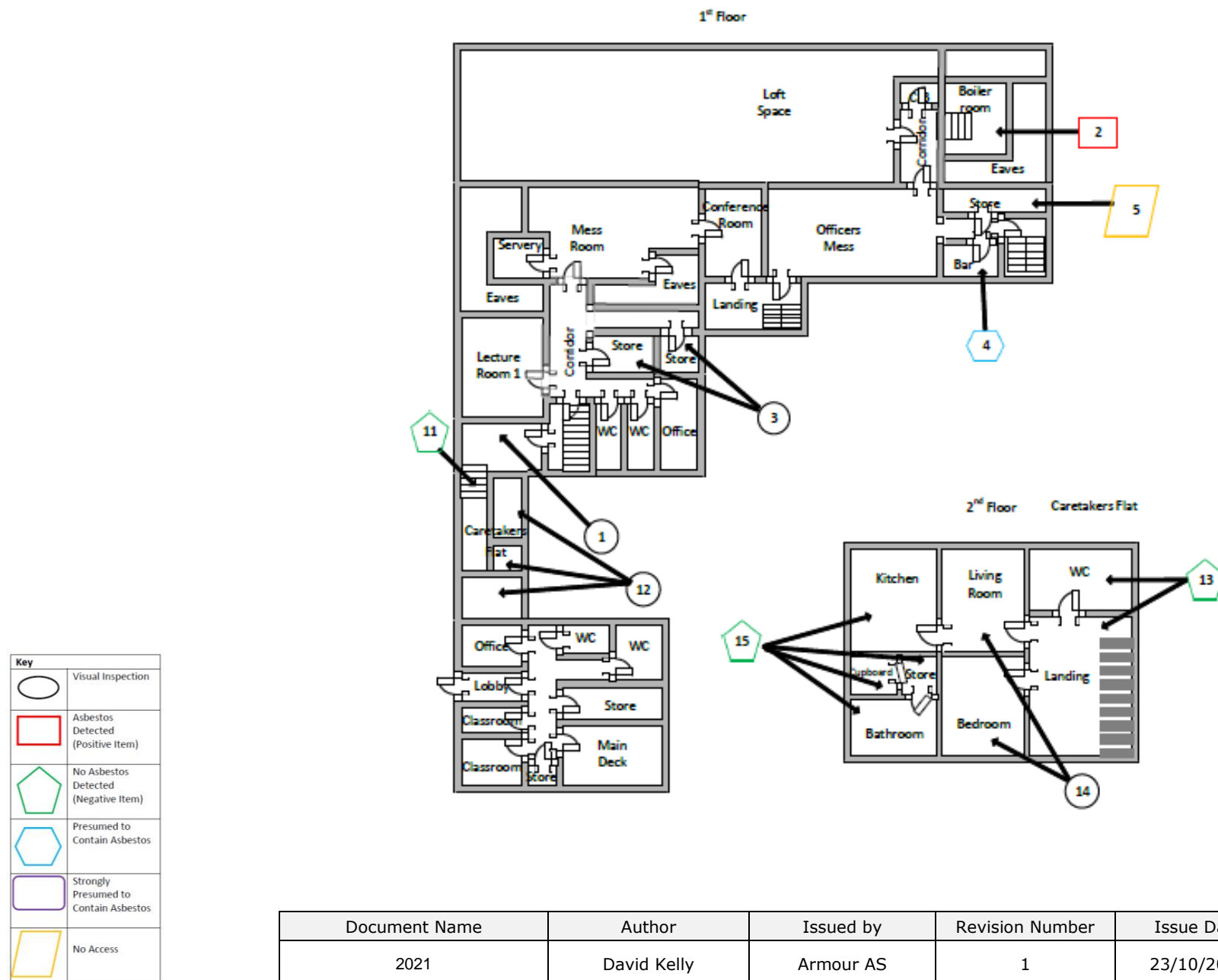
PRINT NAME: Chloe Bowman

Reg. No. 2378228 England. Registered Office: Envirochem, 12 The Gardens, Broadcut, Fareham, Hampshire, PO16 8SS.

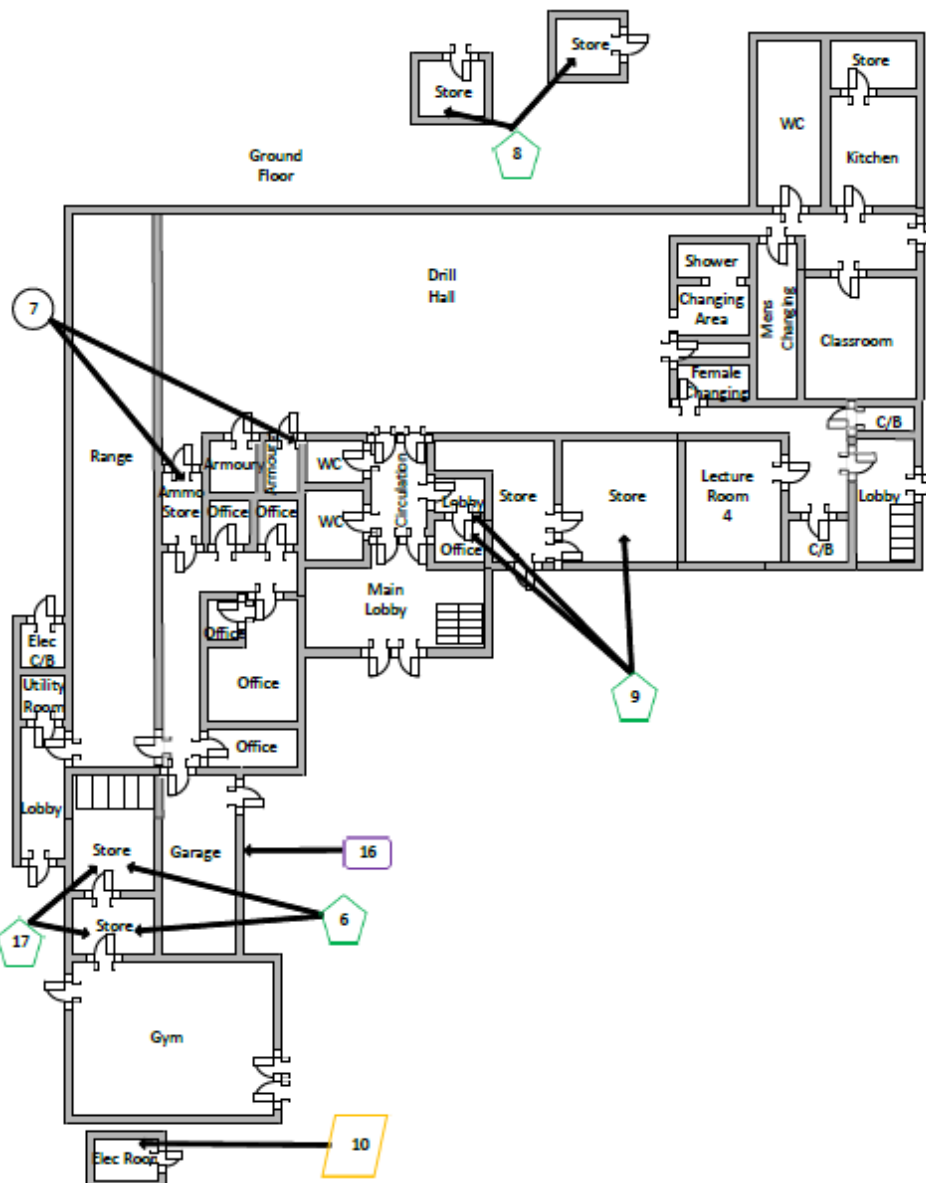
Page 1 of 1







Document Name	Author	Issued by	Revision Number	Issue Date	Page No
2021	David Kelly	Armour AS	1	23/10/2021	28

## Section 10: Site Plan



Document Name	Author	Issued by	Revision Number	Issue Date	Page No
2021	David Kelly	Armour AS	1	23/10/2021	29



Key	
	Visual Inspection
	Asbestos Detected (Positive Item)
	No Asbestos Detected (Negative Item)
	Presumed to Contain Asbestos
	Strongly Presumed to Contain Asbestos
	No Access

Document Name	Author	Issued by	Revision Number	Issue Date	Page No
2021	David Kelly	Armour AS	1	23/10/2021	30



**I the surveyor can confirm that this report is accurate to my findings onsite and this survey has been Content checked by myself.**

**Checked by: Will Fyles**

**Date: 23/10/2021**

**I the Admin Manager can confirm that this report is accurate to the paperwork received and this survey has been quality checked by myself.**

**Checked by: Andrea Bansee**

**Date: 23/10/2021**

**Report Compiled By**

**Armour Analytical Services Ltd, Admirals Yard, Station Road, Bristol, BS34 6LR**

Document Name	Author	Issued by	Revision Number	Issue Date	Page No
2021	David Kelly	Armour AS	1	23/10/2021	31