

**Project Number A-00397 (3700)**

**Re-Inspection  
Asbestos Survey Report - Revised**

**Royal Wessex Yeomanry D  
Oakleigh Road  
Devon  
EX32 8JT**



Working in Partnership with Shield Services Group

Document Name	Author	Issued by	Revision Number	Issue Date	Page No
2020	David Kelly	Armour AS	1	23/10/2021	1

## **Contents**

<b>Section</b>	
<b>1</b>	<b>Contact Details</b>
<b>2</b>	<b>Executive Summary</b>
<b>3</b>	<b>Site Description &amp; Survey Information</b>
<b>4</b>	<b>Positive, Presumed or No Access Items</b>
<b>5</b>	<b>Negative Photos Sheets</b>
<b>6</b>	<b>Survey Objectives</b>
<b>7</b>	<b>Survey Notes</b>
<b>8</b>	<b>Material Assessment Algorithm</b>
<b>9</b>	<b>Certificates of Bulk Analysis</b>
<b>10</b>	<b>Site Plan</b>

Document Name	Author	Issued by	Revision Number	Issue Date	Page No
2020	David Kelly	Armour AS	1	23/10/2021	2

## **Section 1: Contact Details**

<b>Client Details:</b>		<b>Instructing Party:</b>	
Wessex RFCA Mount House Mount Street Taunton TA1 3QE		Wessex RFCA Mount House Mount Street Taunton TA1 3QE	
<b>Contact Name:</b>	Kelvin Walker	<b>Contact Name:</b>	Chloe Smith
<b>Tel:</b> 01823 250 116	<b>Fax:</b> N/A	<b>Tel:</b> 01823 250 116	<b>Fax:</b> N/A

<b>Site Address:</b>		<b>Report Author:</b>	
Royal Wessex Yeomanry D Oakleigh Road Devon EX32 8JT		Armour Analytical Services Admirals Yard Station Road Bristol BS34 6LR	
<b>Contact Name:</b>	Kelvin Walker	<b>Contact Name:</b>	Andrea Bansee
<b>Tel:</b> 01823 250 116	<b>Fax:</b> N/A	<b>Mobile:</b> 07468 535 836	

<b>Lead Surveyor's Name:</b>	<b>Lead Surveyor's Authorising Signature:</b>
David Kelly	

Document Name	Author	Issued by	Revision Number	Issue Date	Page No
2020	David Kelly	Armour AS	1	23/10/2021	3

## **Section 2: Executive Summary**

Sample Number	Sample Type	Location	Analysis
DK/27	Textured Coating to Ceiling	FF Corridor, Kitchen and Living Room 022	N.A.D.I.S
DK/28	Textured Coating to Walls	FF Corridor 023	N.A.D.I.S
DK/29	Textured Coating to Walls	Caretakers Flat – Stairwell 024	N.A.D.I.S

N.A.D.I.S – No Asbestos Detected in Sample

In addition to the above sampled items, the following items have been either been “Strongly Presumed” To Contain Asbestos or “Presumed” to Contain Asbestos as they were either visually identified in being so, labelled after previously being sampled on prior surveys or not accessible at the time of the survey:

Status	Sample Type	Location
Previously Sampled	Sink Pad - Bituminous Product	Ground Floor Kitchen 008
Previously Sampled	Floor Tiles & Adhesive - Vinyl Products	Ground Floor WC/Shower 009
Presumed	Toilet Seat - PVC / Reinforced Plastics	Ground Floor WC/Shower 010
Presumed	Heater - No Access Gained	Ground Floor Gym 011
Presumed	Heaters - No Access Gained	Ground Floor Drill Hall 012
Presumed	Toilet Seats - PVC / Reinforced Plastics	Ground Floor WC's x 2 013
Presumed	Safe - No Access Gained	Ground Floor Store 015
Previously Sampled	Ceiling - Insulating Board	Ground Floor Classroom Cupboard 016
Previously Sampled	Floor Tiles & Adhesive - Vinyl Products	Ground Floor Lecture Room 2 017
Presumed	All - No Access Gained	Ground Floor Cadet Building - Office and Store 019
Presumed	Safe - No Access Gained	First Floor Staff Kitchen 001
Previously Sampled	Floor Tiles & Adhesive - Vinyl Products	First Floor Lecture Room 002
Previously Sampled	Floor Tiles & Adhesive - Vinyl Products	First Floor Armoury Store 003
Previously Sampled	Floor Tiles & Adhesive - Vinyl Products	First Floor Bar Extension 004

Document Name	Author	Issued by	Revision Number	Issue Date	Page No
2020	David Kelly	Armour AS	1	23/10/2021	4

Status	Sample Type	Location
Previously Sampled	Panels to Doors - Insulating Board	First Floor Cleaners Cupboards x 2 005
Previously Sampled	Panels to Doors - Insulating Board	First Floor Classroom & Office 018
Presumed	All - No Access Gained	First Floor Caretakers Flat 021

The presence of asbestos in these areas cannot be ascertained at this time. If any works are to be carried out in these areas in the future, then these works should be approached cautiously.

In accordance with current legislation, any suspect materials encountered in these areas are to be assumed to contain asbestos until proven otherwise. This will normally involve cessation of works in the affected area.

Document Name	Author	Issued by	Revision Number	Issue Date	Page No
2020	David Kelly	Armour AS	1	23/10/2021	5

## **Section 3: Site Description & Survey Information**

### **Brief description on the general building construction**

Brick construction with a pitched tiled roof.

### **Caveat for no access areas**

All areas accessed.

### **EXTERNAL MATERIALS**

Roof Type	Pitched
Roof Materials	Non-Asbestos Tiles
Soffits	Timber
Fascia	Timber
Walls	Brick
Verge Under cloaking	N/A
Guttering	Metal, Plastic
Downpipes	Metal, Plastic
Window/Door frames	uPVC
Other Materials	N/A

### **INTERNAL MATERIALS**

Loft Insulation	Fiberglass
Roof Underlining	Non-Asbestos Felt
Ceilings	Plasterboard, AIB, Lath and Plaster
Walls <i>Internal</i>	Plasterboard, Brick, Lath & Plaster, Wood, Supalux
Floors	Carpet, Lino, Timber, Concrete, Tiles
Doors/Frames	Timber, AIB
Pipework/Insulation	Foam, MMMF
Boxings	Timber, Plasterboard
Boiler Make	Modern
Flue Pipes	Metal
Storage Heaters	No Access within live heaters
Electrical Boxes/Machinery	Modern
Ducting/Risers	None
Stairs	Concrete, Timber
Lift Shafts	None
Other Materials	N/A

Document Name	Author	Issued by	Revision Number	Issue Date	Page No
2020	David Kelly	Armour AS	1	23/10/2021	6

## Section 4: Positive, Presumed or No Access Items

<b>Item No:</b>	<b>1</b>	<b>Sample No:</b>	<b>N/A</b>
<b>Location:</b>	First Floor - Staff Kitchen 001		



<b>Material Description:</b>	Safe - No Access Gained	
<b>Identification:</b>	Presumed to Contain Asbestos	
<b>Approx. quantity:</b>	1 no	
<b>Accessibility</b>	Difficult	<i>Assessment Score</i>
<b>Product type:</b>	Asbestos insulating board	2
<b>Extent of Damage:</b>	Major damage	3
<b>Surface Treatment:</b>	Unsealed AIB	2
<b>Asbestos type:</b>	Amosite, Chrysotile	2
<b>Material Assessment Score:</b>		9
<b>Priority Assessment Score:</b>		Medium
<b>Action:</b>	Manage	
<b>Comments:</b>	No access within safe casing without damaging safe	

Document Name	Author	Issued by	Revision Number	Issue Date	Page No
2020	David Kelly	Armour AS	1	23/10/2021	7



<b>Item No:</b>	<b>2</b>	<b>Sample No:</b>	<b>N/A</b>
<b>Location:</b>	First Floor - Lecture Room 002		



<b>Material Description:</b>	Floor Tiles & Adhesive - Vinyl Products	
<b>Identification:</b>	Previously Sampled - Asbestos Detected	
<b>Approx. quantity:</b>	66 m <sup>2</sup>	
<b>Accessibility</b>	Difficult	<i>Assessment Score</i>
<b>Product type:</b>	Vinyl	1
<b>Extent of Damage:</b>	Slight / minor damage	1
<b>Surface Treatment:</b>	Non-friable	0
<b>Asbestos type:</b>	Chrysotile	1
<b>Material Assessment Score:</b>		3
<b>Priority Assessment Score:</b>		Negligible
<b>Action:</b>	Manage	
<b>Comments:</b>	Under carpet. Previously sampled ref: Armour 17/10/19 Sample DK/2	

Document Name	Author	Issued by	Revision Number	Issue Date	Page No
2020	David Kelly	Armour AS	1	23/10/2021	8



<b>Item No:</b>	<b>3</b>	<b>Sample No:</b>	<b>N/A</b>
<b>Location:</b>	First Floor - Armoury Store 003		



<b>Material Description:</b>	Floor Tiles & Adhesive - Vinyl Products	
<b>Identification:</b>	Previously Sampled - Asbestos Detected	
<b>Approx. quantity:</b>	20 m <sup>2</sup>	
<b>Accessibility</b>	Easy	<i>Assessment Score</i>
<b>Product type:</b>	Vinyl	1
<b>Extent of Damage:</b>	Slight / minor damage	1
<b>Surface Treatment:</b>	Non-friable	0
<b>Asbestos type:</b>	Chrysotile	1
<b>Material Assessment Score:</b>		3
<b>Priority Assessment Score:</b>		Negligible
<b>Action:</b>	Manage	
<b>Comments:</b>	Previously sampled ref: Armour 17/10/19 Sample DK/3	

Document Name	Author	Issued by	Revision Number	Issue Date	Page No
2020	David Kelly	Armour AS	1	23/10/2021	9

<b>Item No:</b>	<b>4</b>	<b>Sample No:</b>	<b>N/A</b>
<b>Location:</b>	First Floor - Bar Extension 004		



<b>Material Description:</b>	Floor Tiles & Adhesive - Vinyl Products	
<b>Identification:</b>	Previously Sampled - Asbestos Detected	
<b>Approx. quantity:</b>	24 m <sup>2</sup>	
<b>Accessibility</b>	Difficult	<i>Assessment Score</i>
<b>Product type:</b>	Vinyl	1
<b>Extent of Damage:</b>	Slight / minor damage	1
<b>Surface Treatment:</b>	Non-friable	0
<b>Asbestos type:</b>	Chrysotile	1
<b>Material Assessment Score:</b>		3
<b>Priority Assessment Score:</b>		Negligible
<b>Action:</b>	Manage	
<b>Comments:</b>	Under carpet. Previously sampled ref: Armour 17/10/19 Sample DK/5	

Document Name	Author	Issued by	Revision Number	Issue Date	Page No
2020	David Kelly	Armour AS	1	23/10/2021	10

<b>Item No:</b>	<b>5</b>	<b>Sample No:</b>	<b>N/A</b>
<b>Location:</b>	First Floor - Cleaners Cupboards x 2 005		



<b>Material Description:</b>	Panels to Doors - Insulating Board	
<b>Identification:</b>	Previously Sampled - Asbestos Detected	
<b>Approx. quantity:</b>	4 m <sup>2</sup>	
<b>Accessibility</b>	Easy	Assessment Score
<b>Product type:</b>	Asbestos insulating board	2
<b>Extent of Damage:</b>	Moderate damage	2
<b>Surface Treatment:</b>	Unsealed AIB	2
<b>Asbestos type:</b>	Amosite	2
<b>Material Assessment Score:</b>		8
<b>Priority Assessment Score:</b>		Medium
<b>Action:</b>	Encapsulate/Restrict Access	
<b>Comments:</b>	Several areas of damage. Restrict access to cupboards until encapsulated. Previously sampled ref: Armour 17/10/19 Sample DK/9	

Document Name	Author	Issued by	Revision Number	Issue Date	Page No
2020	David Kelly	Armour AS	1	23/10/2021	11

<b>Item No:</b>	<b>8</b>	<b>Sample No:</b>	<b>N/A</b>
<b>Location:</b>	Ground Floor - Kitchen 008		



<b>Material Description:</b>	Sink Pad - Bituminous Product	
<b>Identification:</b>	Previously Sampled - Asbestos Detected	
<b>Approx. quantity:</b>	2 no	
<b>Accessibility</b>	Medium	Assessment Score
<b>Product type:</b>	Bitumen	1
<b>Extent of Damage:</b>	Slight / minor damage	1
<b>Surface Treatment:</b>	Non-friable	0
<b>Asbestos type:</b>	Chrysotile	1
<b>Material Assessment Score:</b>		3
<b>Priority Assessment Score:</b>		Negligible
<b>Action:</b>	Manage	
<b>Comments:</b>	Previously sampled ref: Armour 17/10/19 Sample DK/14	

Document Name	Author	Issued by	Revision Number	Issue Date	Page No
2020	David Kelly	Armour AS	1	23/10/2021	12

<b>Item No:</b>	<b>9</b>	<b>Sample No:</b>	<b>N/A</b>
<b>Location:</b>	Ground Floor - WC/Shower 009		



<b>Material Description:</b>	Floor Tiles & Adhesive - Vinyl Products	
<b>Identification:</b>	Previously Sampled - Asbestos Detected	
<b>Approx. quantity:</b>	30 m <sup>2</sup>	
<b>Accessibility</b>	Easy	<i>Assessment Score</i>
<b>Product type:</b>	Vinyl	1
<b>Extent of Damage:</b>	Slight / minor damage	1
<b>Surface Treatment:</b>	Non-friable	0
<b>Asbestos type:</b>	Chrysotile	1
<b>Material Assessment Score:</b>		3
<b>Priority Assessment Score:</b>		Negligible
<b>Action:</b>	Manage	
<b>Comments:</b>	Previously sampled ref: Armour 17/10/19 Sample DK/17	

Document Name	Author	Issued by	Revision Number	Issue Date	Page No
2020	David Kelly	Armour AS	1	23/10/2021	13



<b>Item No:</b>	<b>10</b>	<b>Sample No:</b>	<b>N/A</b>
<b>Location:</b>	Ground Floor - WC/Shower 010		



<b>Material Description:</b>	Toilet Seats - PVC / Reinforced Plastics	
<b>Identification:</b>	Presumed to Contain Asbestos	
<b>Approx. quantity:</b>	2 no	
<b>Accessibility</b>	Easy	<i>Assessment Score</i>
<b>Product type:</b>	Reinforced Plastics	1
<b>Extent of Damage:</b>	Minor damage	1
<b>Surface Treatment:</b>	Non-friable	0
<b>Asbestos type:</b>	Chrysotile	1
<b>Material Assessment Score:</b>		8
<b>Priority Assessment Score:</b>		Medium
<b>Action:</b>	Manage	
<b>Comments:</b>	Not possible to sample as may damage integrity of seat	

Document Name	Author	Issued by	Revision Number	Issue Date	Page No
2020	David Kelly	Armour AS	1	23/10/2021	14

<b>Item No:</b>	<b>11</b>	<b>Sample No:</b>	<b>N/A</b>
<b>Location:</b>	Ground Floor - Gym 011		



<b>Material Description:</b>	Heater - No Access Gained	
<b>Identification:</b>	Presumed to Contain Asbestos	
<b>Approx. quantity:</b>	1 no	
<b>Accessibility</b>	Difficult	<i>Assessment Score</i>
<b>Product type:</b>	Asbestos insulating board	2
<b>Extent of Damage:</b>	Major damage	3
<b>Surface Treatment:</b>	Unsealed AIB	2
<b>Asbestos type:</b>	Amosite, Chrysotile	2
<b>Material Assessment Score:</b>		9
<b>Priority Assessment Score:</b>		Medium
<b>Action:</b>	Manage	
<b>Comments:</b>	No access within live heater	

Document Name	Author	Issued by	Revision Number	Issue Date	Page No
2020	David Kelly	Armour AS	1	23/10/2021	15



<b>Item No:</b>	<b>12</b>	<b>Sample No:</b>	<b>N/A</b>
<b>Location:</b>	Ground Floor - Drill Hall 012		



<b>Material Description:</b>	Heaters - No Access Gained	
<b>Identification:</b>	Presumed to Contain Asbestos	
<b>Approx. quantity:</b>	3 no	
<b>Accessibility</b>	Difficult	<i>Assessment Score</i>
<b>Product type:</b>	Asbestos insulating board	2
<b>Extent of Damage:</b>	Major damage	3
<b>Surface Treatment:</b>	Unsealed AIB	2
<b>Asbestos type:</b>	Amosite, Chrysotile	2
<b>Material Assessment Score:</b>		9
<b>Priority Assessment Score:</b>		Medium
<b>Action:</b>	Manage	
<b>Comments:</b>	No access within live heaters	

Document Name	Author	Issued by	Revision Number	Issue Date	Page No
2020	David Kelly	Armour AS	1	23/10/2021	16

<b>Item No:</b>	<b>13</b>	<b>Sample No:</b>	<b>N/A</b>
<b>Location:</b>	Ground Floor - WC's x 2 013		



<b>Material Description:</b>	Toilet Seats - PVC / Reinforced Plastics	
<b>Identification:</b>	Presumed to Contain Asbestos	
<b>Approx. quantity:</b>	2 no	
<b>Accessibility</b>	Easy	<i>Assessment Score</i>
<b>Product type:</b>	Reinforced Plastics	1
<b>Extent of Damage:</b>	Minor damage	1
<b>Surface Treatment:</b>	Non-friable	0
<b>Asbestos type:</b>	Chrysotile	1
<b>Material Assessment Score:</b>		3
<b>Priority Assessment Score:</b>		Negligible
<b>Action:</b>	Manage	
<b>Comments:</b>	Not possible to sample as may damage integrity of seat	

Document Name	Author	Issued by	Revision Number	Issue Date	Page No
2020	David Kelly	Armour AS	1	23/10/2021	17

<b>Item No:</b>	<b>15</b>	<b>Sample No:</b>	<b>N/A</b>
<b>Location:</b>	Ground Floor - Store 015		



<b>Material Description:</b>	Safe - No Access Gained	
<b>Identification:</b>	Presumed to Contain Asbestos	
<b>Approx. quantity:</b>	1 no	
<b>Accessibility</b>	Difficult	<i>Assessment Score</i>
<b>Product type:</b>	Asbestos insulating board	2
<b>Extent of Damage:</b>	Major damage	3
<b>Surface Treatment:</b>	Unsealed AIB	2
<b>Asbestos type:</b>	Amosite, Chrysotile	2
<b>Material Assessment Score:</b>		9
<b>Priority Assessment Score:</b>		Medium
<b>Action:</b>	Manage	
<b>Comments:</b>	No access within safe casing without damaging safe	

Document Name	Author	Issued by	Revision Number	Issue Date	Page No
2020	David Kelly	Armour AS	1	23/10/2021	18

<b>Item No:</b>	<b>16</b>	<b>Sample No:</b>	<b>N/A</b>
<b>Location:</b>	Ground Floor - Classroom Cupboard 016		



<b>Material Description:</b>	Ceiling - Insulating Board	
<b>Identification:</b>	Previously Sampled - Asbestos Detected	
<b>Approx. quantity:</b>	2 m <sup>2</sup>	
<b>Accessibility</b>	Easy	<i>Assessment Score</i>
<b>Product type:</b>	Asbestos insulating board	2
<b>Extent of Damage:</b>	Slight / minor damage	1
<b>Surface Treatment:</b>	Unsealed AIB	2
<b>Asbestos type:</b>	Amosite	2
<b>Material Assessment Score:</b>		7
<b>Priority Assessment Score:</b>		Medium
<b>Action:</b>	Encapsulate/Restrict Access	
<b>Comments:</b>	Frayed edges and several areas of low damage. Restrict access to cupboards until encapsulated. Previously sampled ref: Armour 17/10/19 Sample DK/20	

Document Name	Author	Issued by	Revision Number	Issue Date	Page No
2020	David Kelly	Armour AS	1	23/10/2021	19

<b>Item No:</b>	<b>17</b>	<b>Sample No:</b>	<b>N/A</b>
<b>Location:</b>	Ground Floor - Lecture Room 2 017		



<b>Material Description:</b>	Floor Tiles & Adhesive - Vinyl Products	
<b>Identification:</b>	Previously Sampled - Asbestos Detected	
<b>Approx. quantity:</b>	30 m <sup>2</sup>	
<b>Accessibility</b>	Easy	<i>Assessment Score</i>
<b>Product type:</b>	Vinyl	1
<b>Extent of Damage:</b>	Slight / minor damage	1
<b>Surface Treatment:</b>	Non-friable	0
<b>Asbestos type:</b>	Chrysotile	1
<b>Material Assessment Score:</b>		3
<b>Priority Assessment Score:</b>		Negligible
<b>Action:</b>	Manage	
<b>Comments:</b>	Previously sampled ref: Armour 17/10/19 Sample DK/21	

Document Name	Author	Issued by	Revision Number	Issue Date	Page No
2020	David Kelly	Armour AS	1	23/10/2021	20



<b>Item No:</b>	<b>18</b>	<b>Sample No:</b>	<b>N/A</b>
<b>Location:</b>	First Floor - Classroom & Office 018		



<b>Material Description:</b>	Panels to Doors - Insulating Board	
<b>Identification:</b>	Previously Sampled - Asbestos Detected	
<b>Approx. quantity:</b>	4 m <sup>2</sup>	
<b>Accessibility</b>	Easy	Assessment Score
<b>Product type:</b>	Asbestos insulating board	2
<b>Extent of Damage:</b>	Slight / minor damage	1
<b>Surface Treatment:</b>	Encapsulated AIB	1
<b>Asbestos type:</b>	Amosite	2
<b>Material Assessment Score:</b>		6
<b>Priority Assessment Score:</b>		Low
<b>Action:</b>	Encapsulate	
<b>Comments:</b>	Minor encapsulation required, 2 x doors. Previously sampled ref: Armour 17/10/19 Sample DK/24	

Document Name	Author	Issued by	Revision Number	Issue Date	Page No
2020	David Kelly	Armour AS	1	23/10/2021	21

<b>Item No:</b>	<b>21</b>	<b>Sample No:</b>	<b>N/A</b>
<b>Location:</b>	First Floor - Caretakers Flat 021		



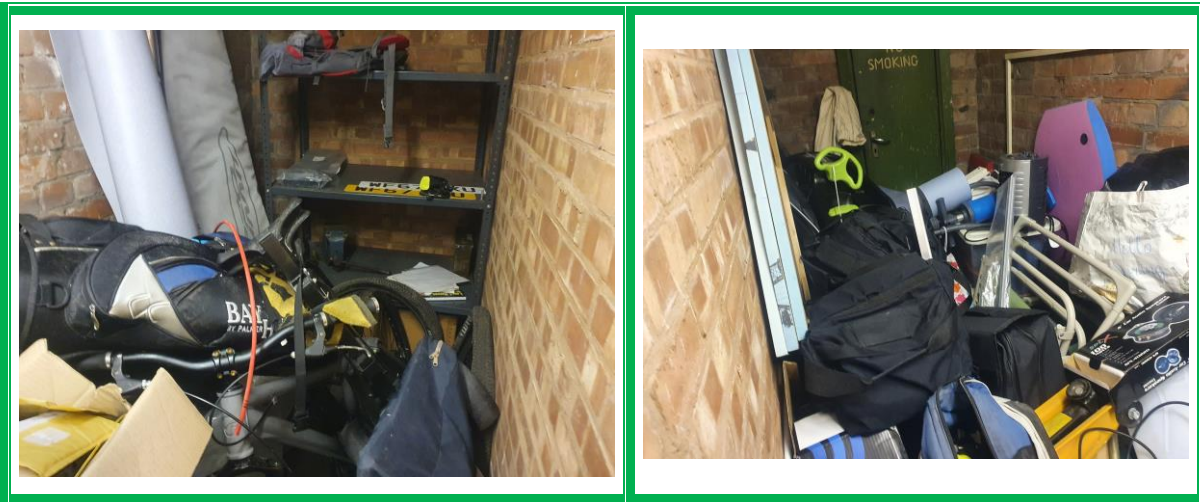
<b>Material Description:</b>	All - No Access Gained	
<b>Identification:</b>	Presumed to Contain Asbestos	
<b>Approx. quantity:</b>	All Rooms	
<b>Accessibility</b>	Difficult	<i>Assessment Score</i>
<b>Product type:</b>	Pipe insulation, spray coating, friable debris	3
<b>Extent of Damage:</b>	Major damage	3
<b>Surface Treatment:</b>	Unsealed Pipe Insulation or Spray Coating	3
<b>Asbestos type:</b>	Amosite, Chrysotile, Crocidolite	3
<b>Material Assessment Score:</b>		12
<b>Priority Assessment Score:</b>		High
<b>Action:</b>	Further Investigation Needed	
<b>Comments:</b>	No access within caretakers flat on request of the caretaker	

Document Name	Author	Issued by	Revision Number	Issue Date	Page No
2020	David Kelly	Armour AS	1	23/10/2021	22



## Section 5: Negative Items

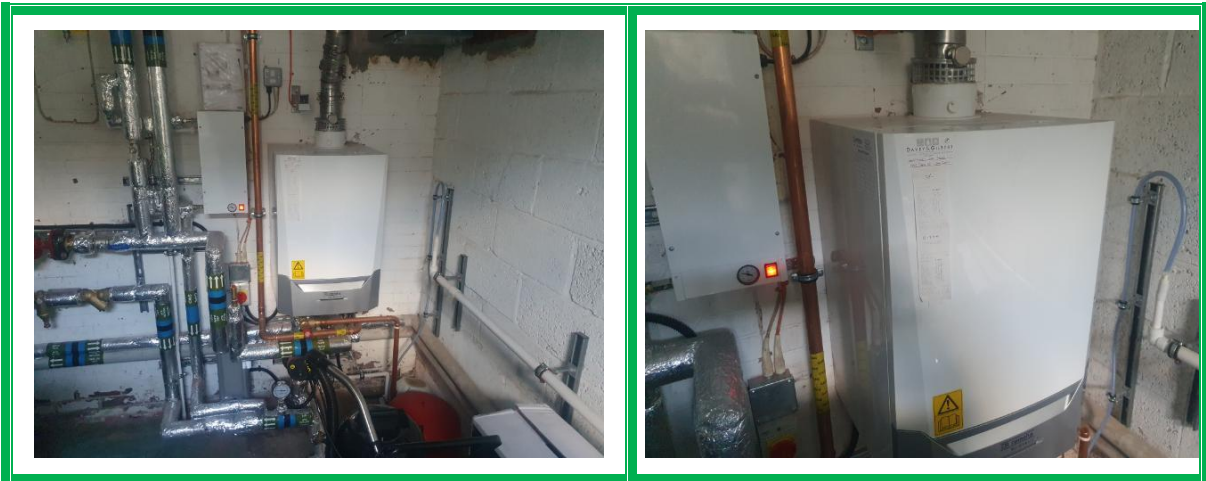
<b>Item No:</b>	<b>6</b>	<b>Sample No:</b>	<b>N/A</b>
<b>Location:</b>	Ground Floor – Store 006		



<b>Material Description:</b>	No Asbestos Suspected	
<b>Identification:</b>	N/A	
<b>Approx. quantity:</b>	N/A	
<b>Accessibility</b>	N/A	<i>Assessment Score</i>
<b>Product type:</b>	N/A	N/A
<b>Extent of Damage:</b>	N/A	N/A
<b>Surface Treatment:</b>	N/A	N/A
<b>Asbestos type:</b>	N/A	N/A
<b>Material Assessment Score:</b>		
<b>Priority Assessment Score:</b>		
<b>Action:</b>	N/A	
<b>Comments:</b>	Previously a no access area, now accessed. No asbestos suspected.	

Document Name	Author	Issued by	Revision Number	Issue Date	Page No
2020	David Kelly	Armour AS	1	23/10/2021	23

<b>Item No:</b>	<b>7</b>	<b>Sample No:</b>	<b>N/A</b>
<b>Location:</b>	Ground Floor - Boiler Room 007		



<b>Material Description:</b>	Boiler	
<b>Identification:</b>	N/A	
<b>Approx. quantity:</b>	N/A	
<b>Accessibility</b>	N/A	Assessment Score
<b>Product type:</b>	N/A	N/A
<b>Extent of Damage:</b>	N/A	N/A
<b>Surface Treatment:</b>	N/A	N/A
<b>Asbestos type:</b>	N/A	N/A
<b>Material Assessment Score:</b>		
<b>Priority Assessment Score:</b>		
<b>Action:</b>	N/A	
<b>Comments:</b>	Boiler has been replaced. Plasterboard panels on ceiling	

Document Name	Author	Issued by	Revision Number	Issue Date	Page No
2020	David Kelly	Armour AS	1	23/10/2021	24

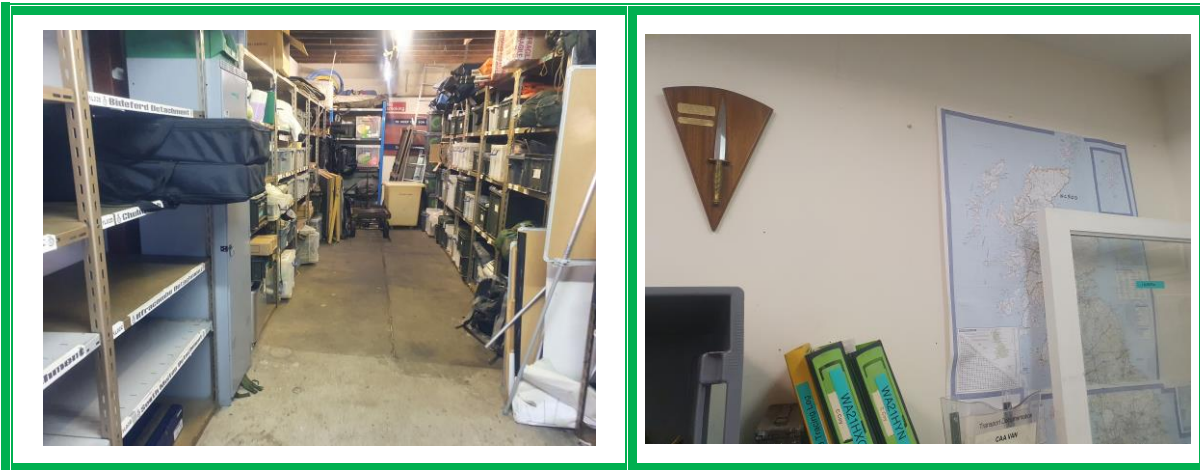
<b>Item No:</b>	<b>14</b>	<b>Sample No:</b>	<b>N/A</b>
<b>Location:</b>	GF Armoury x 2 014		



<b>Material Description:</b>	No Asbestos Suspected	
<b>Identification:</b>	N/A	
<b>Approx. quantity:</b>	N/A	
<b>Accessibility</b>	N/A	<i>Assessment Score</i>
<b>Product type:</b>	N/A	N/A
<b>Extent of Damage:</b>	N/A	N/A
<b>Surface Treatment:</b>	N/A	N/A
<b>Asbestos type:</b>	N/A	N/A
<b>Material Assessment Score:</b>		
<b>Priority Assessment Score:</b>		
<b>Action:</b>	N/A	
<b>Comments:</b>	Previously a no access area, now accessed. No asbestos suspected. Lathe and plaster ceiling above metal cage.	

Document Name	Author	Issued by	Revision Number	Issue Date	Page No
2020	David Kelly	Armour AS	1	23/10/2021	25

<b>Item No:</b>	<b>19</b>	<b>Sample No:</b>	<b>N/A</b>
<b>Location:</b>	GF Cadet Building, Office, and Store 019		



<b>Material Description:</b>	No Asbestos Suspected	
<b>Identification:</b>	N/A	
<b>Approx. quantity:</b>	N/A	
<b>Accessibility</b>	N/A	<i>Assessment Score</i>
<b>Product type:</b>	N/A	N/A
<b>Extent of Damage:</b>	N/A	N/A
<b>Surface Treatment:</b>	N/A	N/A
<b>Asbestos type:</b>	N/A	N/A
<b>Material Assessment Score:</b>		
<b>Priority Assessment Score:</b>		
<b>Action:</b>	N/A	
<b>Comments:</b>	<p>Previously a no access area, now accessed.</p> <p>No asbestos suspected. Non asbestos wall panels were previously sampled within office.</p>	

Document Name	Author	Issued by	Revision Number	Issue Date	Page No
2020	David Kelly	Armour AS	1	23/10/2021	26

<b>Item No:</b>	<b>20</b>	<b>Sample No:</b>	<b>N/A</b>
<b>Location:</b>	Ground Floor - Stores x 2 020		

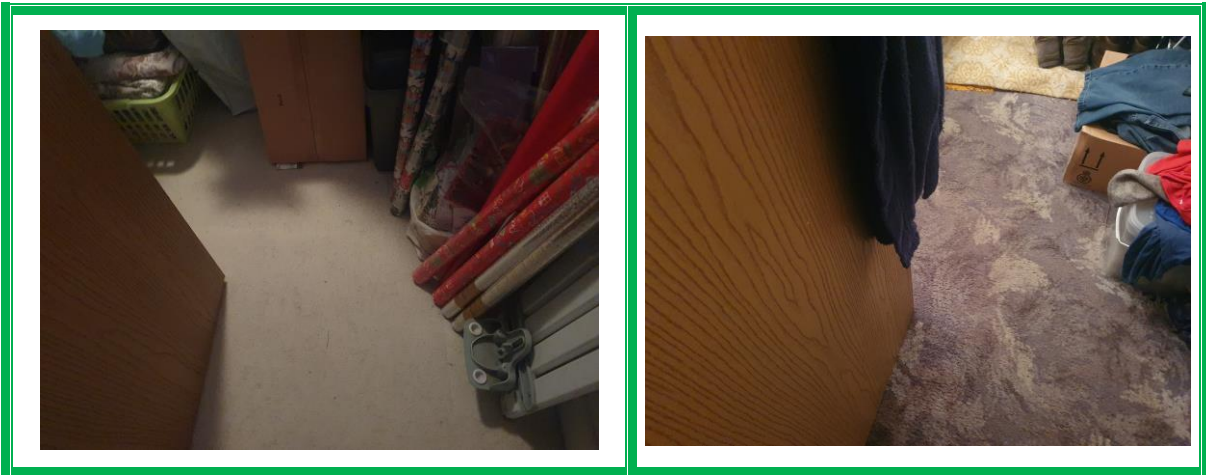


<b>Material Description:</b>	No Suspect Materials Found	
<b>Identification:</b>	N/A	
<b>Approx. quantity:</b>	N/A	
<b>Accessibility</b>	N/A	<i>Assessment Score</i>
<b>Product type:</b>	N/A	N/A
<b>Extent of Damage:</b>	N/A	N/A
<b>Surface Treatment:</b>	N/A	N/A
<b>Asbestos type:</b>	N/A	N/A
<b>Material Assessment Score:</b>		
<b>Priority Assessment Score:</b>		
<b>Action:</b>	N/A	
<b>Comments:</b>	Previously un-accessed rooms. Now accessed and no asbestos found.	

Document Name	Author	Issued by	Revision Number	Issue Date	Page No
2020	David Kelly	Armour AS	1	23/10/2021	27



<b>Item No:</b>	<b>21</b>	<b>Sample No:</b>	<b>N/A</b>
<b>Location:</b>	FF Bedrooms x 3 and Bathroom 021		



<b>Material Description:</b>	No Asbestos Suspected	
<b>Identification:</b>	N/A	
<b>Approx. quantity:</b>	N/A	
<b>Accessibility</b>	N/A	<i>Assessment Score</i>
<b>Product type:</b>	N/A	N/A
<b>Extent of Damage:</b>	N/A	N/A
<b>Surface Treatment:</b>	N/A	N/A
<b>Asbestos type:</b>	N/A	N/A
<b>Material Assessment Score:</b>		
<b>Priority Assessment Score:</b>		
<b>Action:</b>	N/A	
<b>Comments:</b>	Previously a no access area, now accessed. No asbestos suspected.	

Document Name	Author	Issued by	Revision Number	Issue Date	Page No
2020	David Kelly	Armour AS	1	23/10/2021	28

<b>Item No:</b>	<b>22</b>	<b>Sample No:</b>	<b>DK/27</b>
<b>Location:</b>	FF Corridor, Kitchen and Living Room 022		



<b>Material Description:</b>	No Asbestos Suspected	
<b>Identification:</b>	Sampled – No Asbestos Suspected	
<b>Approx. quantity:</b>	N/A	
<b>Accessibility</b>	N/A	<i>Assessment Score</i>
<b>Product type:</b>	N/A	N/A
<b>Extent of Damage:</b>	N/A	N/A
<b>Surface Treatment:</b>	N/A	N/A
<b>Asbestos type:</b>	N/A	N/A
<b>Material Assessment Score:</b>		
<b>Priority Assessment Score:</b>		
<b>Action:</b>	N/A	
<b>Comments:</b>	Previously a no access area, now accessed. No asbestos suspected.	

Document Name	Author	Issued by	Revision Number	Issue Date	Page No
2020	David Kelly	Armour AS	1	23/10/2021	29



<b>Item No:</b>	<b>23</b>	<b>Sample No:</b>	<b>DK/28</b>
<b>Location:</b>	FF Corridor 023		



<b>Material Description:</b>	No Asbestos Suspected	
<b>Identification:</b>	Sampled – No Asbestos Suspected	
<b>Approx. quantity:</b>	N/A	
<b>Accessibility</b>	N/A	<i>Assessment Score</i>
<b>Product type:</b>	N/A	N/A
<b>Extent of Damage:</b>	N/A	N/A
<b>Surface Treatment:</b>	N/A	N/A
<b>Asbestos type:</b>	N/A	N/A
<b>Material Assessment Score:</b>		
<b>Priority Assessment Score:</b>		
<b>Action:</b>	N/A	
<b>Comments:</b>	Previously a no access area, now accessed. No asbestos suspected.	

Document Name	Author	Issued by	Revision Number	Issue Date	Page No
2020	David Kelly	Armour AS	1	23/10/2021	30

<b>Item No:</b>	<b>24</b>	<b>Sample No:</b>	<b>DK/29</b>
<b>Location:</b>	Caretakers Flat – Stairwell 024		



<b>Material Description:</b>	No Asbestos Suspected	
<b>Identification:</b>	Sampled – No Asbestos Suspected	
<b>Approx. quantity:</b>	N/A	
<b>Accessibility</b>	N/A	<i>Assessment Score</i>
<b>Product type:</b>	N/A	N/A
<b>Extent of Damage:</b>	N/A	N/A
<b>Surface Treatment:</b>	N/A	N/A
<b>Asbestos type:</b>	N/A	N/A
<b>Material Assessment Score:</b>		
<b>Priority Assessment Score:</b>		
<b>Action:</b>	N/A	
<b>Comments:</b>	Previously a no access area, now accessed. No asbestos suspected.	

Document Name	Author	Issued by	Revision Number	Issue Date	Page No
2020	David Kelly	Armour AS	1	23/10/2021	31

## **Section 6: Survey Objectives**

Instructions were received from Kelvin Walker of Wessex RFCA to carry out a Re-Inspection asbestos survey at Royal Wessex Yeomanry D, Oakleigh Road, Devon, EX32 8JT in accordance with HSG264 and Armour Analytical's quality procedures.

The survey was carried out on 06 December 2020 by David Kelly with the objective of facilitating a Re-Inspection report.

A survey with the objective of accessing previously no accessed areas was carried out on 18 October 2021 by David Kelly.

Document Name	Author	Issued by	Revision Number	Issue Date	Page No
2020	David Kelly	Armour AS	1	23/10/2021	32

## **Section 7: Survey Notes**

This report has been written with reference to the various Guidance Notes etc, issued, and current at the date of this report and describes circumstances at the site on the date the investigation took place.

Where similar items exist in the building, only one or two samples may have been taken to ascertain the material content. It was assumed that similar products were of the same material.

Any person undertaking work within the buildings should be told of the presence of asbestos. This briefing also applies to any other person associated with the site, including staff, sub-contractors and others.

The drawings in the report are not to scale and are illustrative only to indicate approximate locations. The descriptions used are for location identification purposes.

All the recommendations described in this report are based upon assumptions made after consideration of the type of material, condition of the material, its location, analysis result and type of use the area is thought to be subjected to. However, statutory authorities or others could require amendments based on local knowledge, change in legislation, change in use or indeed other conditions or criteria.

Samples taken from floor tiles (or similar material) may include a bitumen adhesive as part of the sample. It is known that some proprietary brands of bitumen have an asbestos content and this will be included as an integral part of the bulk sample unless otherwise stated.

Document Name	Author	Issued by	Revision Number	Issue Date	Page No
2020	David Kelly	Armour AS	1	23/10/2021	33

## **Section 8: Material Assessment Algorithm**

Variable	Score	Examples
Installation / Product type	1	Vinyl, 'Bakelite', Cement
	2	Asbestos Insulating Board, Paper, Rope
	3	Pipe Insulation, Spray Coating, Friable Debris
Condition / damage	0	Good
	1	Slight / Minor Damage
	2	Moderate Damage – Breakage To Surface Treatment
	3	Major Damage – Smashed Or Exposed Material
Surface treatment	0	Non-Friable E.G. Vinyl
	1	Enclosed Insulation, Rope Seal, Encapsulated AIB
	2	Unsealed AIB, Encapsulated Insulation
	3	Unsealed Insulation, Spray Coating
Asbestos type	1	Chrysotile
	2	Amosite & Other Amphiboles
	3	Crocidolite

The scores from each of the four sections are added together to produce a risk score:

Risk score	Risk assessment
<b>10 or more</b>	High risk
<b>7 – 9</b>	Medium risk
<b>5 – 6</b>	Low risk
<b>4 &amp; below</b>	Negligible risk

## Section 9: Certificates of Bulk Analysis



Our Ref: J220044 Fl: 3  
Your Ref: 3700  
Date: 20/10/2021

**ENVIROCHEM**  
Analytical Laboratories Ltd.  
12 The Gardens  
Broadcut, Fareham  
Hampshire  
PO16 8SS



Tel: (01329) 287777  
Fax: (01329) 287755  
www.envirochem.co.uk  
office@envirochem.co.uk

### Asbestos Fibre Identification Report

**Client:** Armour Analytical Services Ltd  
Admirals Yard, Station Road, Patchway, Bristol, BS34 6LR  
**Site Address:** Royal Wessex Yeomanry, Oakleigh Road, Barnstaple, Devon, EX32 8JT  
**Sampled By:** Armour Analytical Services Ltd  
**Date sampled/received:** 18th October 2021  
**Date analysed:** 20th October 2021  
**Analyst/s:** Chloe Bowman  
**Analysis Location:** 12 The Gardens, Broadcut, Fareham, Hampshire, PO16 8SS

#### ANALYTICAL PROCEDURE

Fibre identification was carried out in accordance with the documented 'in-house' method (2.01) based on the HSE Guidance Note HSG 248. These employed stereo microscopy, polarized microscopy and dispersion staining techniques.

#### RESULTS

Sample No.	Sample Ref.	Location	Asbestos Detected	Asbestos Type
DK/27	BS711391	First floor. Corridor / living room / kitchen. Textured coating to ceiling.	No	
DK/28	BS711392	First floor. Corridor. Textured coating to walls.	No	
DK/29	BS711393	Caretakers flat. Stairwell. Textured coating to walls.	No	

#### NOTES:

1. Sample(s) were examined for the presence of 8 types of asbestos fibres: crocidolite (blue), amosite (brown), chrysotile (white), anthophyllite, actinolite and tremolite.
2. The results shown in this test report specifically refer to the sample(s) tested as received unless otherwise stated and samples collected by the client are evaluated using information provided by the client. For samples collected by the client the date of receipt is deemed to be the same as the date sampled.
3. Envirochem is a UKAS accredited laboratory for sampling and identification of asbestos containing materials.
4. Comments, observations and opinions are outside the scope of UKAS accreditation.
5. The analytical method in the HSG248 does not quantify the amount of asbestos present, therefore UKAS accreditation does not permit quantification.
6. If, during fibre identification, only 1 or 2 fibres are seen and identified as asbestos, then the term 'trace asbestos identified' is used.
7. This report shall not be reproduced except in full, without written approval of Envirochem.

SIGNATURE:



Authorised signatory

PRINT NAME: Chloe Bowman

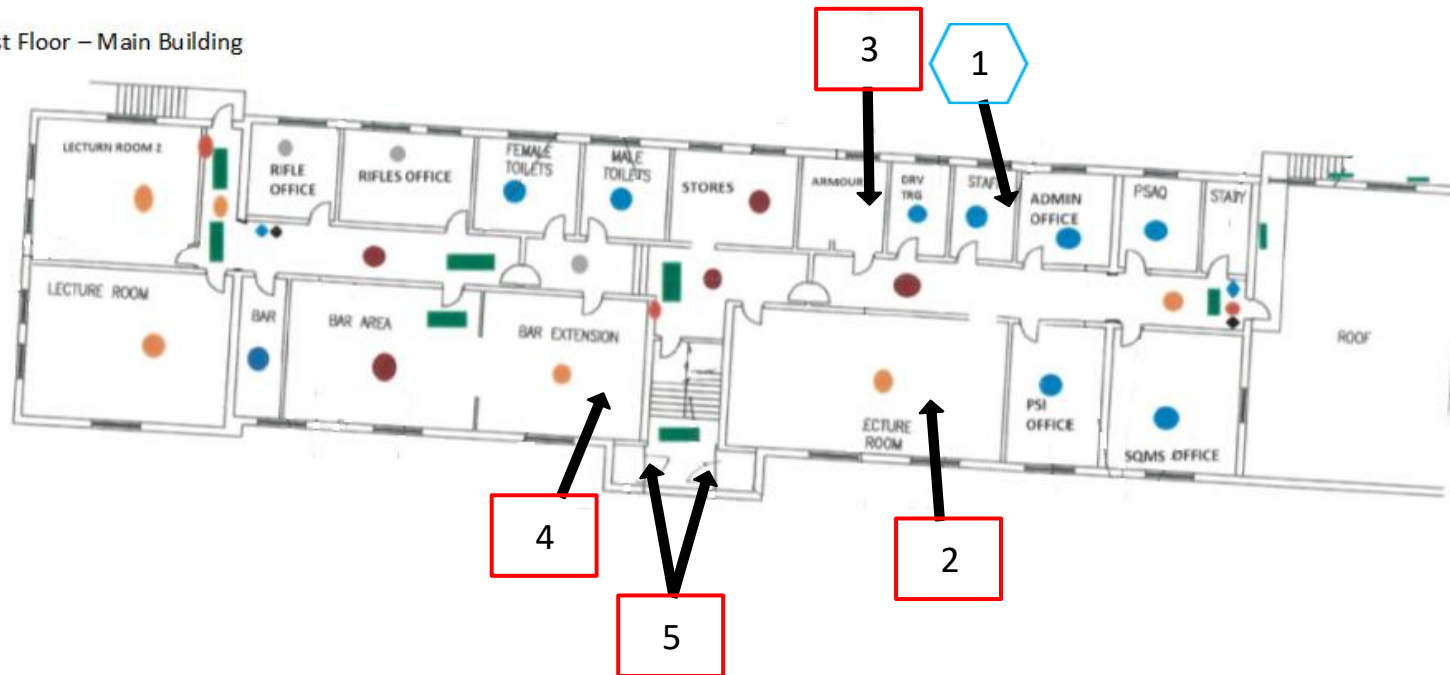
Reg. No. 2378228 England. Registered Office: Envirochem, 12 The Gardens, Broadcut, Fareham, Hampshire, PO16 8SS.







Page 1 of 1

Document Name	Author	Issued by	Revision Number	Issue Date	Page No
2020	David Kelly	Armour AS	1	23/10/2021	35

## Section 10: Site Plan

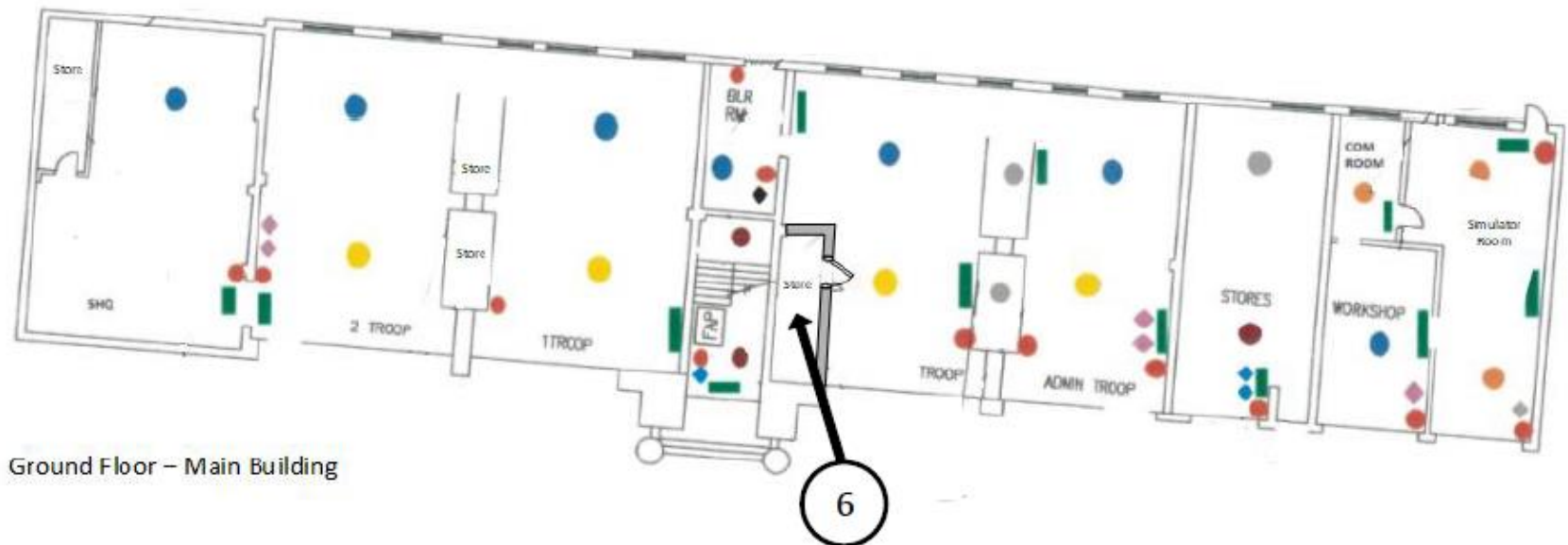
First Floor – Main Building









Key	
	Visual Inspection
	Asbestos Detected (Positive Item)
	No Asbestos Detected (Negative Item)
	Presumed to Contain Asbestos
	Strongly Presumed to Contain Asbestos
	No Access

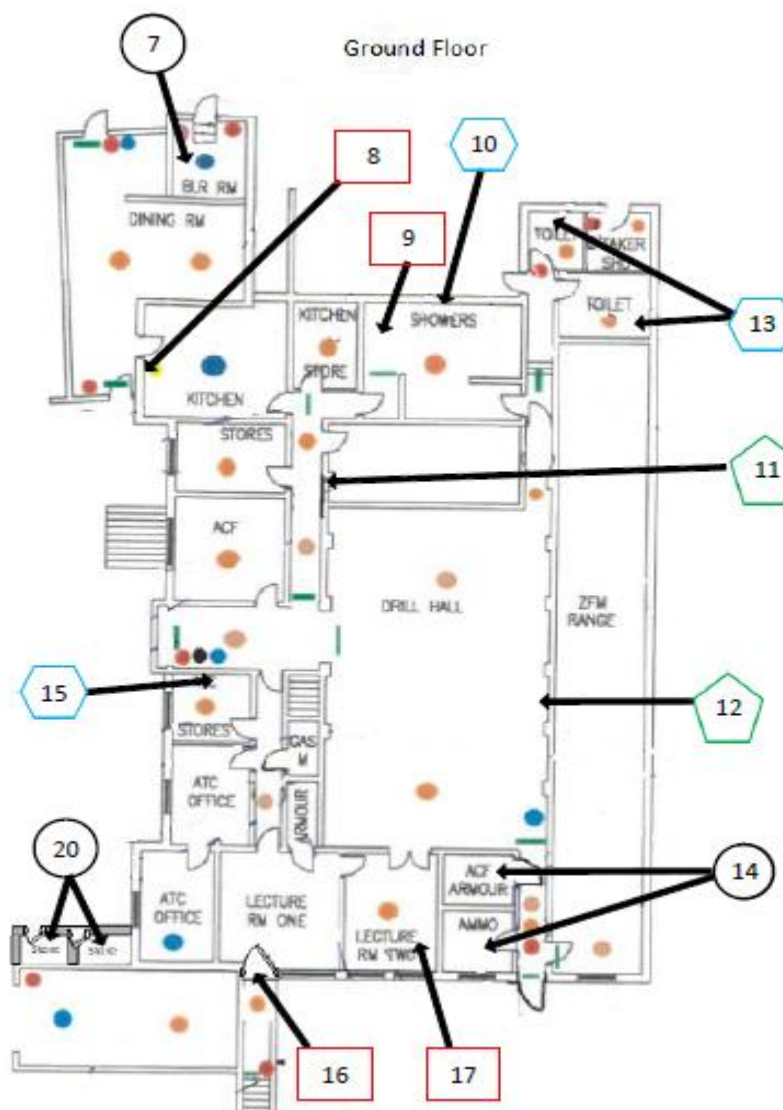
Document Name	Author	Issued by	Revision Number	Issue Date	Page No
2020	David Kelly	Armour AS	1	23/10/2021	36











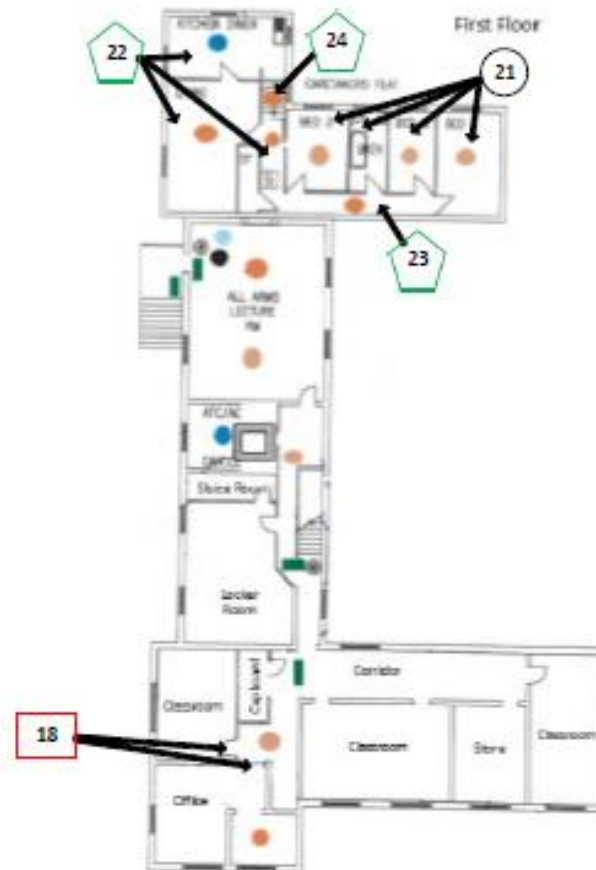
Key	
	Visual Inspection
	Asbestos Detected (Positive Item)
	No Asbestos Detected (Negative Item)
	Presumed to Contain Asbestos
	Strongly Presumed to Contain Asbestos
	No Access







Document Name	Author	Issued by	Revision Number	Issue Date	Page No
2020	David Kelly	Armour AS	1	23/10/2021	37



Key	
	Visual Inspection
	Asbestos Detected (Positive Item)
	No Asbestos Detected (Negative Item)
	Presumed to Contain Asbestos
	Strongly Presumed to Contain Asbestos
	No Access

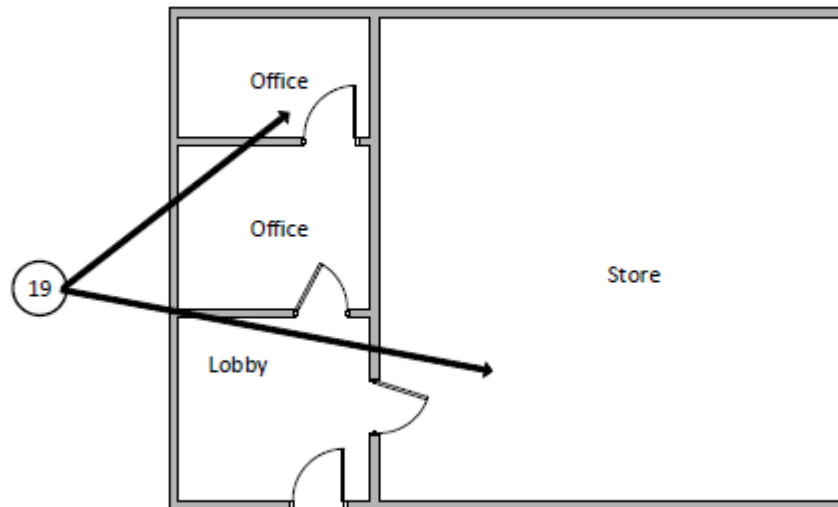
Document Name	Author	Issued by	Revision Number	Issue Date	Page No
2020	David Kelly	Armour AS	1	23/10/2021	38









Key	
	Visual Inspection
	Asbestos Detected (Positive Item)
	No Asbestos Detected (Negative Item)
	Presumed to Contain Asbestos
	Strongly Presumed to Contain Asbestos
	No Access

Document Name	Author	Issued by	Revision Number	Issue Date	Page No
2020	David Kelly	Armour AS	1	23/10/2021	39

Cadet Building



Key	
	Visual Inspection
	Asbestos Detected (Positive Item)
	No Asbestos Detected (Negative Item)
	Presumed to Contain Asbestos
	Strongly Presumed to Contain Asbestos
	No Access

Document Name	Author	Issued by	Revision Number	Issue Date	Page No
2020	David Kelly	Armour AS	1	23/10/2021	40



**I the surveyor can confirm that this report is accurate to my findings onsite and this survey has been Content checked by myself.**

**Checked by: Will Fyles**

**Date: 23/10/2021**

**I the Admin Manager can confirm that this report is accurate to the paperwork received and this survey has been quality checked by myself.**

**Checked by: Andrea Bansee**

**Date: 23/10/2021**

**Report Compiled By**

**Armour Analytical Services Ltd, Admirals Yard, Station Road, Bristol, BS34 6LR**

Document Name	Author	Issued by	Revision Number	Issue Date	Page No
2020	David Kelly	Armour AS	1	23/10/2021	41