

**Project Number A-00623 (3700)**

**Re-Inspection  
Asbestos Survey Report - Revised**

**165 Port and Maritime  
Brest Road  
Devon  
PL6 5EW**



Working in Partnership with Shield Services Group



Document Name	Author	Issued by	Revision Number	Issue Date	Page No
2021	David Kelly	Armour AS	1	18/10/2021	1

## **Contents**


<b>Section</b>	
<b>1</b>	<b>Contact Details</b>
<b>2</b>	<b>Executive Summary</b>
<b>3</b>	<b>Site Description &amp; Survey Information</b>
<b>4</b>	<b>Positive, Presumed or No Access Items</b>
<b>5</b>	<b>Negative Photos Sheets</b>
<b>6</b>	<b>Survey Objectives</b>
<b>7</b>	<b>Survey Notes</b>
<b>8</b>	<b>Material Assessment Algorithm</b>
<b>9</b>	<b>Certificates of Bulk Analysis</b>
<b>10</b>	<b>Site Plan</b>

Document Name	Author	Issued by	Revision Number	Issue Date	Page No
2021	David Kelly	Armour AS	1	18/10/2021	2

## **Section 1: Contact Details**

<b>Client Details:</b>		<b>Instructing Party:</b>	
Wessex RFCA Mount House Mount Street Taunton TA1 3QE		Wessex RFCA Mount House Mount Street Taunton TA1 3QE	
<b>Contact Name:</b>	Kelvin Walker	<b>Contact Name:</b>	Kelvin Walker
<b>Tel:</b> 01823 250 116	<b>Fax:</b> N/A	<b>Tel:</b> 01823 250 116	<b>Fax:</b> N/A

<b>Site Address:</b>		<b>Report Author:</b>	
165 Port and Maritime Brest Road Devon PL6 5EW		Armour Analytical Services Admirals Yard Station Road Bristol BS34 6LR	
<b>Contact Name:</b>	Kelvin Walker	<b>Contact Name:</b>	Andrea Bansee
<b>Tel:</b> 01823 250116	<b>Fax:</b> N/A	<b>Mobile:</b> 07468 535 836	

<b>Lead Surveyor's Name:</b>	<b>Lead Surveyor's Authorising Signature:</b>
David Kelly	

Document Name	Author	Issued by	Revision Number	Issue Date	Page No
2021	David Kelly	Armour AS	1	18/10/2021	3



## **Section 2: Executive Summary**

No samples were taken during this survey.

In addition to the above sampled items, the following items have been either been "Previously Sampled", "Strongly Presumed" To Contain Asbestos or "Presumed" to Contain Asbestos as they were either visually identified in being so, labelled after previously being sampled on prior surveys or not accessible at the time of the survey:

The following items have been either been "Strongly Presumed" To Contain Asbestos or "Presumed" to Contain Asbestos as they were either visually identified in being so, labelled after previously being sampled on prior surveys or not accessible at the time of the survey:

Status	Sample Type	Location
Presumed	Electrics - Woven Product	Basement Electrical Cupboard 016

Document Name	Author	Issued by	Revision Number	Issue Date	Page No
2021	David Kelly	Armour AS	1	18/10/2021	4

Status	Sample Type	Location
Presumed	All - No Access Gained	Ground Floor Lift Shaft 001
Previously Sampled	Boxing Panels - Cement Product	Ground Floor Armoury 003
Presumed	All - No Access Gained	Ground Floor Ducts 005
Presumed	Electrical Panels - Woven Product	Ground Floor Washroom 006
Presumed	Heaters - Insulating Board	Ground Floor Drill Hall 007
Presumed	Adhesive Under Parquet Flooring - Bituminous Product	Ground Floor Drill Hall 008
Presumed	Above Suspended Ceiling - No Access Gained	Ground Floor Drill Hall 009
Presumed	Safe - Insulating Board	Ground Floor Office 010
Presumed	Safe - Insulating Board	Ground Floor Stores 011
Previously Sampled	Ceilings - Textured Coating	Ground Floor Kitchen Office and Plantroom 012
Previously Sampled	Ceiling - Textured Coating	Ground Floor Kitchen Circulation 013
Previously Sampled	Gaskets - Gaskets (Compressed)	Ground Floor Gas Intake Store 022
Presumed	Safe - Insulating Board	Ground Floor Office 027
Presumed	Safe - Insulating Board	First Floor Office 026
Previously Sampled	Damp Proof Course - Bituminous Product	External Walls 019
Presumed	Electrics - Woven Product	External Gas Intake Store 021
Previously Sampled	Profiled Roof - Cement Product	External Pol Store 024
Previously Sampled	Profiled Roof - Cement Product	External Log Store 025

The presence of asbestos in these areas cannot be ascertained at this time. If any works are to be carried out in these areas in the future, then these works should be approached cautiously.

In accordance with current legislation, any suspect materials encountered in these areas are to be assumed to contain asbestos until proven otherwise. This will normally involve cessation of works in the affected area.

Document Name	Author	Issued by	Revision Number	Issue Date	Page No
2021	David Kelly	Armour AS	1	18/10/2021	5

## **Section 3: Site Description & Survey Information**

### **Brief description on the general building construction**

Brick and block construction with a flat felt roof, built circa 1979.

### **Caveat for no access areas**

No access within live electrics, heaters or boilers.  
No access within floor ducts.

### **EXTERNAL MATERIALS**

Roof Type	Flat
Roof Materials	Felt
Soffits	N/A
Fascia	N/A
Walls	Brick
Verge Under cloaking	N/A
Guttering	Metal, Plastic
Downpipes	Metal, Plastic
Window/Door frames	Aluminum
Other Materials	N/A

### **INTERNAL MATERIALS**

Loft Insulation	N/A
Roof Underlining	N/A
Ceilings	Plasterboard, Suspended, Strawboard
Walls <i>Internal</i>	Plasterboard, Brick, Timber
Floors	Carpet, Lino, Screed
Doors/Frames	Timber, Metal
Pipework/Insulation	MMMF, Copper, Foam
Boxings	Timber, Plasterboard, Cement
Boiler Make	Modern
Flue Pipes	Metal
Storage Heaters	No Access Within Heaters
Electrical Boxes/Machinery	No Access Within Electrics
Ducting/Risers	N/A
Stairs	Concrete
Lift Shafts	No Access
Other Materials	N/A

Document Name	Author	Issued by	Revision Number	Issue Date	Page No
2021	David Kelly	Armour AS	1	18/10/2021	6

## Section 4: Positive, Presumed or No Access Items

<b>Item No:</b>	<b>1</b>	<b>Sample No:</b>	<b>N/A</b>
<b>Location:</b>	All Floors - Lift Shaft 001		



<b>Material Description:</b>	All - No Access Gained	
<b>Identification:</b>	Presumed to Contain Asbestos	
<b>Approx. quantity:</b>	1 no	
<b>Accessibility</b>	Difficult	Assessment Score
<b>Product type:</b>	Pipe Insulation	3
<b>Extent of Damage:</b>	Major damage	3
<b>Surface Treatment:</b>	Unsealed Insulation	3
<b>Asbestos type:</b>	Amosite, Chrysotile, Crocidolite	3
<b>Material Assessment Score:</b>		12
<b>Priority Assessment Score:</b>		High
<b>Action:</b>	Further Investigation Needed	
<b>Comments:</b>	No access within the lift shaft as there was no lift engineer on site	

Document Name	Author	Issued by	Revision Number	Issue Date	Page No
2021	David Kelly	Armour AS	1	18/10/2021	7

**Item No:** 3

**Sample No:** N/A

**Location:** Ground Floor - Armoury 003



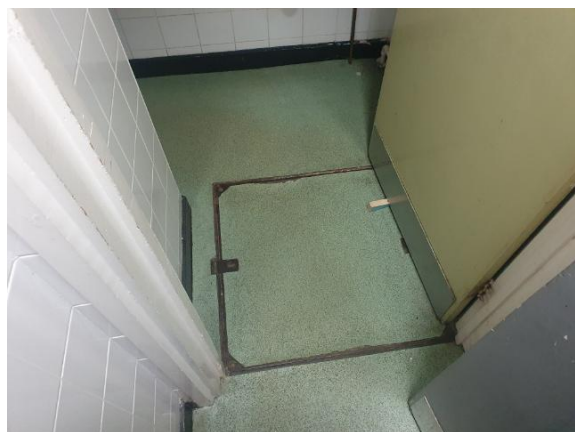
<b>Material Description:</b>	Boxing Panels - Cement Product	
<b>Identification:</b>	Previously Sampled - Asbestos Detected	
<b>Approx. quantity:</b>	3 LM	
<b>Accessibility</b>	Easy	<i>Assessment Score</i>
<b>Product type:</b>	Cement	1
<b>Extent of Damage:</b>	Slight / minor damage	1
<b>Surface Treatment:</b>	Unsealed Cement	1
<b>Asbestos type:</b>	Chrysotile	1
<b>Material Assessment Score:</b>		4
<b>Priority Assessment Score:</b>		Negligible
<b>Action:</b>	Encapsulate	
<b>Comments:</b>	Previously sampled ref: Armour 23/10/19 - Sample DK/1	

Document Name	Author	Issued by	Revision Number	Issue Date	Page No
2021	David Kelly	Armour AS	1	18/10/2021	8



**Item No:** 5 **Sample No:** N/A

**Location:** Ground Floor - Floor Ducts 005



<b>Material Description:</b>	All - No Access Gained	
<b>Identification:</b>	Presumed to Contain Asbestos	
<b>Approx. quantity:</b>	1 no	
<b>Accessibility</b>	Difficult	<i>Assessment Score</i>
<b>Product type:</b>	Pipe Insulation	3
<b>Extent of Damage:</b>	Major damage	3
<b>Surface Treatment:</b>	Unsealed Insulation	3
<b>Asbestos type:</b>	Amosite, Chrysotile, Crocidolite	3
<b>Material Assessment Score:</b>		12
<b>Priority Assessment Score:</b>		High
<b>Action:</b>	Further Investigation Needed	
<b>Comments:</b>	No access within floor ducts due to lone working/confined space	

Document Name	Author	Issued by	Revision Number	Issue Date	Page No
2021	David Kelly	Armour AS	1	18/10/2021	9

**Item No:** 6 **Sample No:** N/A

**Location:** Ground Floor - Wash Room 006

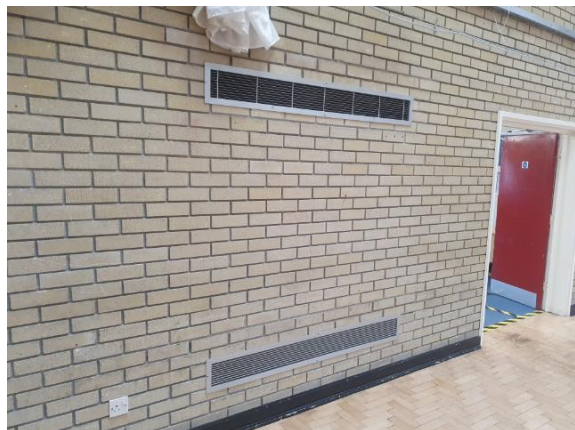


<b>Material Description:</b>	Electrical Panels - Woven Product	
<b>Identification:</b>	Presumed to Contain Asbestos	
<b>Approx. quantity:</b>	2 no	
<b>Accessibility</b>	Difficult	<i>Assessment Score</i>
<b>Product type:</b>	Flashguards	2
<b>Extent of Damage:</b>	Low damage	1
<b>Surface Treatment:</b>	Woven	1
<b>Asbestos type:</b>	Chrysotile	1
<b>Material Assessment Score:</b>		5
<b>Priority Assessment Score:</b>		Low
<b>Action:</b>	Manage	
<b>Comments:</b>	No access within live electrics	

Document Name	Author	Issued by	Revision Number	Issue Date	Page No
2021	David Kelly	Armour AS	1	18/10/2021	10

**Item No:** 7 **Sample No:** N/A

**Location:** Ground Floor - Drill Hall 007



<b>Material Description:</b>	Heaters - Insulating Board	
<b>Identification:</b>	Presumed to Contain Asbestos	
<b>Approx. quantity:</b>	6 no	
<b>Accessibility</b>	Difficult	<i>Assessment Score</i>
<b>Product type:</b>	Asbestos Insulating Board	2
<b>Extent of Damage:</b>	Low damage	1
<b>Surface Treatment:</b>	Unsealed AIB	2
<b>Asbestos type:</b>	Amosite, Chrysotile	2
<b>Material Assessment Score:</b>		7
<b>Priority Assessment Score:</b>		Medium
<b>Action:</b>	Manage	
<b>Comments:</b>	No access within live heaters throughout building	

Document Name	Author	Issued by	Revision Number	Issue Date	Page No
2021	David Kelly	Armour AS	1	18/10/2021	11

**Item No:** 8 **Sample No:** N/A

**Location:** Ground Floor - Drill Hall 008

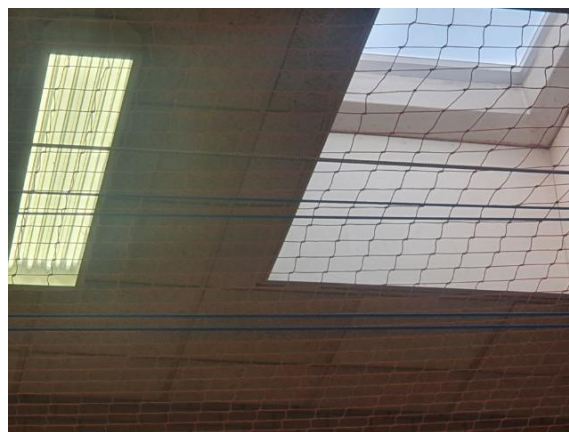


<b>Material Description:</b>	Adhesive under Parquet Flooring - Bituminous Product	
<b>Identification:</b>	Presumed to Contain Asbestos	
<b>Approx. quantity:</b>	100 m <sup>2</sup>	
<b>Accessibility</b>	Difficult	<i>Assessment Score</i>
<b>Product type:</b>	Bitumen	1
<b>Extent of Damage:</b>	Low damage	1
<b>Surface Treatment:</b>	Non Friable	0
<b>Asbestos type:</b>	Chrysotile	1
<b>Material Assessment Score:</b>		3
<b>Priority Assessment Score:</b>		Negligible
<b>Action:</b>	Manage	
<b>Comments:</b>	No access under flooring without irreparable damage	

Document Name	Author	Issued by	Revision Number	Issue Date	Page No
2021	David Kelly	Armour AS	1	18/10/2021	12

**Item No:** 9 **Sample No:** N/A

**Location:** Ground Floor - Drill Hall 009



<b>Material Description:</b>	Above Suspended Ceiling - No Access Gained	
<b>Identification:</b>	Presumed to Contain Asbestos	
<b>Approx. quantity:</b>	Unknown	
<b>Accessibility</b>	Difficult	<i>Assessment Score</i>
<b>Product type:</b>	Pipe Insulation	3
<b>Extent of Damage:</b>	Major damage	3
<b>Surface Treatment:</b>	Unsealed Insulation	3
<b>Asbestos type:</b>	Amosite, Chrysotile, Crocidolite	3
<b>Material Assessment Score:</b>		12
<b>Priority Assessment Score:</b>		High
<b>Action:</b>	Further Investigation Needed	
<b>Comments:</b>	No access to inspect above suspended ceiling due to height restrictions	

Document Name	Author	Issued by	Revision Number	Issue Date	Page No
2021	David Kelly	Armour AS	1	18/10/2021	13



**Item No:** 10

**Sample No:** N/A

**Location:** Ground Floor - Office 010



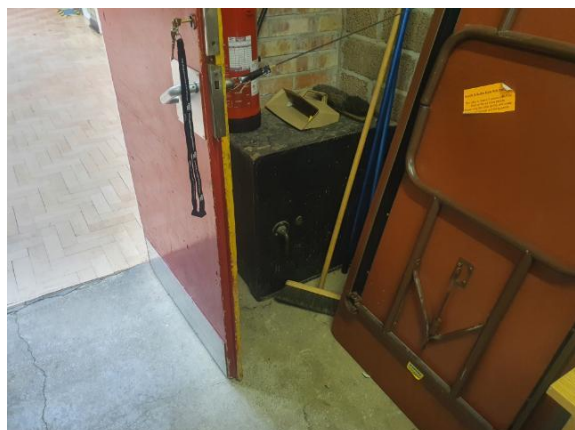
<b>Material Description:</b>	Safe - Insulating Board	
<b>Identification:</b>	Presumed to Contain Asbestos	
<b>Approx. quantity:</b>	1 no	
<b>Accessibility</b>	Difficult	<i>Assessment Score</i>
<b>Product type:</b>	Asbestos Insulating Board	2
<b>Extent of Damage:</b>	Low damage	1
<b>Surface Treatment:</b>	Unsealed AIB	2
<b>Asbestos type:</b>	Amosite, Chrysotile	2
<b>Material Assessment Score:</b>		7
<b>Priority Assessment Score:</b>		Medium
<b>Action:</b>	Manage	
<b>Comments:</b>	No access within safe casings without damaging safe	

Document Name	Author	Issued by	Revision Number	Issue Date	Page No
2021	David Kelly	Armour AS	1	18/10/2021	14

**Item No:** 11

**Sample No:** N/A

**Location:** Ground Floor - Stores 011



<b>Material Description:</b>	Safe - Insulating Board	
<b>Identification:</b>	Presumed to Contain Asbestos	
<b>Approx. quantity:</b>	1 no	
<b>Accessibility</b>	Difficult	<i>Assessment Score</i>
<b>Product type:</b>	Asbestos Insulating Board	2
<b>Extent of Damage:</b>	Low damage	1
<b>Surface Treatment:</b>	Unsealed AIB	2
<b>Asbestos type:</b>	Amosite, Chrysotile	2
<b>Material Assessment Score:</b>		7
<b>Priority Assessment Score:</b>		Medium
<b>Action:</b>	Manage	
<b>Comments:</b>	No access within safe casings without damaging safe	

Document Name	Author	Issued by	Revision Number	Issue Date	Page No
2021	David Kelly	Armour AS	1	18/10/2021	15

**Item No:** 12

**Sample No:** N/A

**Location:** Ground Floor - Kitchen Office and Plantroom 012



<b>Material Description:</b>	Ceilings - Textured Coating	
<b>Identification:</b>	Previously Sampled - Asbestos Detected	
<b>Approx. quantity:</b>	6 m <sup>2</sup>	
<b>Accessibility</b>	Difficult	<i>Assessment Score</i>
<b>Product type:</b>	Textured Coating	1
<b>Extent of Damage:</b>	Slight / minor damage	1
<b>Surface Treatment:</b>	Non-friable	0
<b>Asbestos type:</b>	Chrysotile	1
<b>Material Assessment Score:</b>		3
<b>Priority Assessment Score:</b>		Negligible
<b>Action:</b>	Manage	
<b>Comments:</b>	Previously sampled ref: Armour 23/10/19 - Sample DK/5. Visible in hatch above kitchen	

Document Name	Author	Issued by	Revision Number	Issue Date	Page No
2021	David Kelly	Armour AS	1	18/10/2021	16



**Item No:** 13

**Sample No:** N/A

**Location:** Ground Floor - Kitchen Circulation 013



<b>Material Description:</b>	Ceiling - Textured Coating	
<b>Identification:</b>	Previously Sampled - Asbestos Detected	
<b>Approx. quantity:</b>	6 m <sup>2</sup>	
<b>Accessibility</b>	Difficult	<i>Assessment Score</i>
<b>Product type:</b>	Textured Coating	1
<b>Extent of Damage:</b>	Slight / minor damage	1
<b>Surface Treatment:</b>	Non-friable	0
<b>Asbestos type:</b>	Chrysotile	1
<b>Material Assessment Score:</b>		3
<b>Priority Assessment Score:</b>		Negligible
<b>Action:</b>	Manage	
<b>Comments:</b>	Previously sampled ref: Armour 23/10/19 - Sample DK/6	

Document Name	Author	Issued by	Revision Number	Issue Date	Page No
2021	David Kelly	Armour AS	1	18/10/2021	17

**Item No:** 16

**Sample No:** N/A

**Location:** Basement - Electrical Cupboard 016



<b>Material Description:</b>	Electrics - Woven Product	
<b>Identification:</b>	Presumed to Contain Asbestos	
<b>Approx. quantity:</b>	2 no	
<b>Accessibility</b>	Difficult	<i>Assessment Score</i>
<b>Product type:</b>	Flashguards	2
<b>Extent of Damage:</b>	Low damage	1
<b>Surface Treatment:</b>	Woven	1
<b>Asbestos type:</b>	Chrysotile	1
<b>Material Assessment Score:</b>		5
<b>Priority Assessment Score:</b>		Low
<b>Action:</b>	Manage	
<b>Comments:</b>	No access within live electrics	

Document Name	Author	Issued by	Revision Number	Issue Date	Page No
2021	David Kelly	Armour AS	1	18/10/2021	18

**Item No:** 19

**Sample No:** N/A

**Location:** External - Walls 019



<b>Material Description:</b>	Damp Proof Course - Bituminous Product	
<b>Identification:</b>	Previously Sampled - Asbestos Detected	
<b>Approx. quantity:</b>	Entire perimeter	
<b>Accessibility</b>	Difficult	<i>Assessment Score</i>
<b>Product type:</b>	Bitumen	1
<b>Extent of Damage:</b>	Slight / minor damage	1
<b>Surface Treatment:</b>	Non-friable	0
<b>Asbestos type:</b>	Chrysotile	1
<b>Material Assessment Score:</b>		3
<b>Priority Assessment Score:</b>		Negligible
<b>Action:</b>	Manage	
<b>Comments:</b>	Previously sampled ref: Armour 23/10/19 - Sample DK/10	

Document Name	Author	Issued by	Revision Number	Issue Date	Page No
2021	David Kelly	Armour AS	1	18/10/2021	19

**Item No:** 21

**Sample No:** N/A

**Location:** External - Gas Intake Store 021



<b>Material Description:</b>	Electrics - Woven Product	
<b>Identification:</b>	Presumed to Contain Asbestos	
<b>Approx. quantity:</b>	1 no	
<b>Accessibility</b>	Difficult	<i>Assessment Score</i>
<b>Product type:</b>	Flashguards	2
<b>Extent of Damage:</b>	Low damage	1
<b>Surface Treatment:</b>	Woven	1
<b>Asbestos type:</b>	Chrysotile	1
<b>Material Assessment Score:</b>		5
<b>Priority Assessment Score:</b>		Low
<b>Action:</b>	Manage	
<b>Comments:</b>	No access within live electrics	

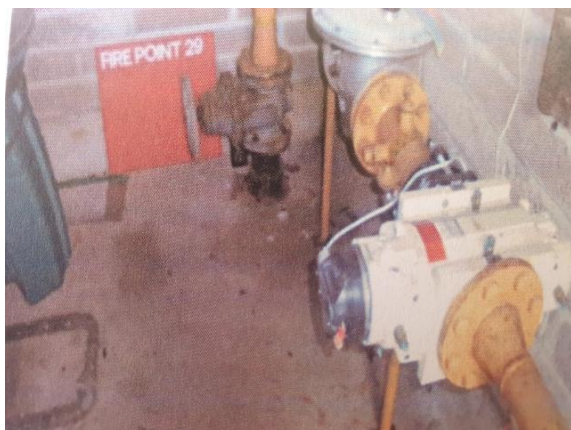
Document Name	Author	Issued by	Revision Number	Issue Date	Page No
2021	David Kelly	Armour AS	1	18/10/2021	20



**Item No:** 22

**Sample No:** N/A

**Location:** Ground Floor - Gas Intake Store 022



<b>Material Description:</b>	Gaskets - Gaskets (compressed)	
<b>Identification:</b>	Previously Sampled - Asbestos Detected	
<b>Approx. quantity:</b>	5 no	
<b>Accessibility</b>	Difficult	<i>Assessment Score</i>
<b>Product type:</b>	Gaskets (Compressed)	2
<b>Extent of Damage:</b>	Slight / minor damage	1
<b>Surface Treatment:</b>	Gaskets	1
<b>Asbestos type:</b>	Chrysotile	1
<b>Material Assessment Score:</b>		5
<b>Priority Assessment Score:</b>		Low
<b>Action:</b>	Manage	
<b>Comments:</b>	Previously sampled ref: Armour 23/10/19 - Sample DK/11	

Document Name	Author	Issued by	Revision Number	Issue Date	Page No
2021	David Kelly	Armour AS	1	18/10/2021	21

**Item No:** 24

**Sample No:** N/A

**Location:** External - POL Store 024



<b>Material Description:</b>	Profiled Roof - Cement Product	
<b>Identification:</b>	Previously Sampled - Asbestos Detected	
<b>Approx. quantity:</b>	30 m <sup>2</sup>	
<b>Accessibility</b>	Difficult	<i>Assessment Score</i>
<b>Product type:</b>	Cement	1
<b>Extent of Damage:</b>	Slight / minor damage	1
<b>Surface Treatment:</b>	Unsealed Cement	1
<b>Asbestos type:</b>	Chrysotile	1
<b>Material Assessment Score:</b>		4
<b>Priority Assessment Score:</b>		Negligible
<b>Action:</b>	Manage	
<b>Comments:</b>	Previously sampled ref: Armour 23/10/19 - Sample DK/12	

Document Name	Author	Issued by	Revision Number	Issue Date	Page No
2021	David Kelly	Armour AS	1	18/10/2021	22

**Item No:** 25

**Sample No:** N/A

**Location:** External - LPG Store 025



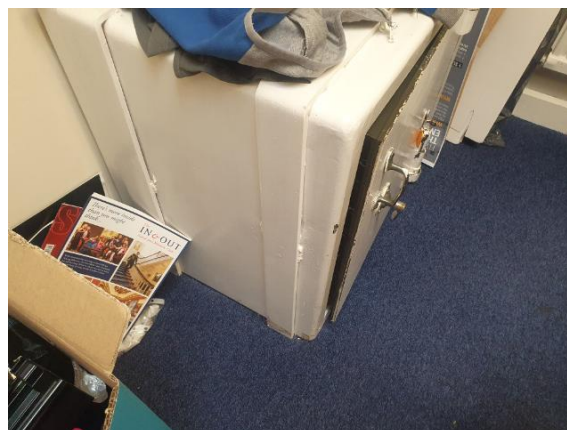
<b>Material Description:</b>	Profiled Roof - Cement Product	
<b>Identification:</b>	Previously Sampled - Asbestos Detected	
<b>Approx. quantity:</b>	12 m <sup>2</sup>	
<b>Accessibility</b>	Difficult	Assessment Score
<b>Product type:</b>	Cement	1
<b>Extent of Damage:</b>	Moderate damage	2
<b>Surface Treatment:</b>	Unsealed Cement	1
<b>Asbestos type:</b>	Chrysotile	1
<b>Material Assessment Score:</b>		5
<b>Priority Assessment Score:</b>		Low
<b>Action:</b>	Manage	
<b>Comments:</b>	Previously sampled ref: Armour 23/10/19 - Sample DK/13. Large crack in one sheet	

Document Name	Author	Issued by	Revision Number	Issue Date	Page No
2021	David Kelly	Armour AS	1	18/10/2021	23

**Item No:** 26

**Sample No:** N/A

**Location:** First Floor - Office 026



<b>Material Description:</b>	Safe - Insulating Board	
<b>Identification:</b>	Presumed to Contain Asbestos	
<b>Approx. quantity:</b>	1 no	
<b>Accessibility</b>	Difficult	<i>Assessment Score</i>
<b>Product type:</b>	Asbestos Insulating Board	2
<b>Extent of Damage:</b>	Low damage	1
<b>Surface Treatment:</b>	Unsealed AIB	2
<b>Asbestos type:</b>	Amosite, Chrysotile	2
<b>Material Assessment Score:</b>		7
<b>Priority Assessment Score:</b>		Medium
<b>Action:</b>	Manage	
<b>Comments:</b>	No access within safe casings without damaging safe	

Document Name	Author	Issued by	Revision Number	Issue Date	Page No
2021	David Kelly	Armour AS	1	18/10/2021	24



**Item No:** 27

**Sample No:** N/A

**Location:** Ground Floor - Office 027



<b>Material Description:</b>	Safe - Insulating Board	
<b>Identification:</b>	Presumed to Contain Asbestos	
<b>Approx. quantity:</b>	1 no	
<b>Accessibility</b>	Difficult	<i>Assessment Score</i>
<b>Product type:</b>	Asbestos Insulating Board	2
<b>Extent of Damage:</b>	Low damage	1
<b>Surface Treatment:</b>	Unsealed AIB	2
<b>Asbestos type:</b>	Amosite, Chrysotile	2
<b>Material Assessment Score:</b>		7
<b>Priority Assessment Score:</b>		Medium
<b>Action:</b>	Manage	
<b>Comments:</b>	No access within safe casings without damaging safe	

Document Name	Author	Issued by	Revision Number	Issue Date	Page No
2021	David Kelly	Armour AS	1	18/10/2021	25

## Section 5: Negative Items

<b>Item No:</b>	<b>2</b>	<b>Sample No:</b>	<b>N/A</b>
<b>Location:</b>	First Floor - Office 002		



<b>Material Description:</b>	No Suspect Materials Found	
<b>Identification:</b>	N/A	
<b>Approx. quantity:</b>	N/A	
<b>Accessibility</b>	N/A	<i>Assessment Score</i>
<b>Product type:</b>	N/A	N/A
<b>Extent of Damage:</b>	N/A	N/A
<b>Surface Treatment:</b>	N/A	N/A
<b>Asbestos type:</b>	N/A	N/A
<b>Material Assessment Score:</b>		N/A
<b>Priority Assessment Score:</b>		N/A
<b>Action:</b>	N/A	
<b>Comments:</b>	Heaters replaced with radiators	

Document Name	Author	Issued by	Revision Number	Issue Date	Page No
2021	David Kelly	Armour AS	1	18/10/2021	26

<b>Item No:</b>	<b>4</b>	<b>Sample No:</b>	<b>N/A</b>
<b>Location:</b>	First Floor – Mess Room 004		

No Photos Available – See plan for location	No Photos Available – See plan for location
---	---

<b>Material Description:</b>	No Suspect Materials Found	
<b>Identification:</b>	N/A	
<b>Approx. quantity:</b>	N/A	
<b>Accessibility</b>	N/A	<i>Assessment Score</i>
<b>Product type:</b>	N/A	N/A
<b>Extent of Damage:</b>	N/A	N/A
<b>Surface Treatment:</b>	N/A	N/A
<b>Asbestos type:</b>	N/A	N/A
<b>Material Assessment Score:</b>		N/A
<b>Priority Assessment Score:</b>		N/A
<b>Action:</b>	N/A	
<b>Comments:</b>	Heaters replaced	

Document Name	Author	Issued by	Revision Number	Issue Date	Page No
2021	David Kelly	Armour AS	1	18/10/2021	27

**Item No:** 14

**Sample No:** N/A

**Location:** Basement - Boiler Room 014



<b>Material Description:</b>	No Suspect Materials Found	
<b>Identification:</b>	N/A	
<b>Approx. quantity:</b>	N/A	
<b>Accessibility</b>	N/A	<i>Assessment Score</i>
<b>Product type:</b>	N/A	N/A
<b>Extent of Damage:</b>	N/A	N/A
<b>Surface Treatment:</b>	N/A	N/A
<b>Asbestos type:</b>	N/A	N/A
<b>Material Assessment Score:</b>		N/A
<b>Priority Assessment Score:</b>		N/A
<b>Action:</b>	N/A	
<b>Comments:</b>	All old gaskets removed and replaced with modern gaskets	

Document Name	Author	Issued by	Revision Number	Issue Date	Page No
2021	David Kelly	Armour AS	1	18/10/2021	28

**Item No:** 15

**Sample No:** N/A

**Location:** Basement - Boiler Room 015



<b>Material Description:</b>	No Suspect Materials Found	
<b>Identification:</b>	N/A	
<b>Approx. quantity:</b>	N/A	
<b>Accessibility</b>	N/A	<i>Assessment Score</i>
<b>Product type:</b>	N/A	N/A
<b>Extent of Damage:</b>	N/A	N/A
<b>Surface Treatment:</b>	N/A	N/A
<b>Asbestos type:</b>	N/A	N/A
<b>Material Assessment Score:</b>		N/A
<b>Priority Assessment Score:</b>		N/A
<b>Action:</b>	N/A	
<b>Comments:</b>	Boilers replaced with modern boilers	

Document Name	Author	Issued by	Revision Number	Issue Date	Page No
2021	David Kelly	Armour AS	1	18/10/2021	29

<b>Item No:</b>	<b>17</b>	<b>Sample No:</b>	<b>N/A</b>
<b>Location:</b>	Basement - Offices x 2, Sports and Silver Stores 017		



<b>Material Description:</b>	No Suspect Materials Found	
<b>Identification:</b>	N/A	
<b>Approx. quantity:</b>	N/A	
<b>Accessibility</b>	N/A	<i>Assessment Score</i>
<b>Product type:</b>	N/A	N/A
<b>Extent of Damage:</b>	N/A	N/A
<b>Surface Treatment:</b>	N/A	N/A
<b>Asbestos type:</b>	N/A	N/A
<b>Material Assessment Score:</b>		N/A
<b>Priority Assessment Score:</b>		N/A
<b>Action:</b>	N/A	
<b>Comments:</b>	Non asbestos pipework in ceiling void. Plastic pipes in timber boxings	

Document Name	Author	Issued by	Revision Number	Issue Date	Page No
2021	David Kelly	Armour AS	1	18/10/2021	30

**Item No:** 18

**Sample No:** N/A

**Location:** Ground Floor - Understairs Cupboard 018



<b>Material Description:</b>	No Suspect Materials Found	
<b>Identification:</b>	N/A	
<b>Approx. quantity:</b>	N/A	
<b>Accessibility</b>	N/A	<i>Assessment Score</i>
<b>Product type:</b>	N/A	N/A
<b>Extent of Damage:</b>	N/A	N/A
<b>Surface Treatment:</b>	N/A	N/A
<b>Asbestos type:</b>	N/A	N/A
<b>Material Assessment Score:</b>		N/A
<b>Priority Assessment Score:</b>		N/A
<b>Action:</b>	N/A	
<b>Comments:</b>	No access under Lino flooring	

Document Name	Author	Issued by	Revision Number	Issue Date	Page No
2021	David Kelly	Armour AS	1	18/10/2021	31



**Item No:** 20

**Sample No:** N/A

**Location:** Ground Floor - Gas Intake Stores x 2 020



<b>Material Description:</b>	No Suspect Materials Found	
<b>Identification:</b>	N/A	
<b>Approx. quantity:</b>	N/A	
<b>Accessibility</b>	N/A	<i>Assessment Score</i>
<b>Product type:</b>	N/A	N/A
<b>Extent of Damage:</b>	N/A	N/A
<b>Surface Treatment:</b>	N/A	N/A
<b>Asbestos type:</b>	N/A	N/A
<b>Material Assessment Score:</b>		N/A
<b>Priority Assessment Score:</b>		N/A
<b>Action:</b>	N/A	
<b>Comments:</b>	Previously a no access area. Now accessed and no asbestos found. Non asbestos fuses	

Document Name	Author	Issued by	Revision Number	Issue Date	Page No
2021	David Kelly	Armour AS	1	18/10/2021	32



**Item No:** 23

**Sample No:** N/A

**Location:** Ground Floor - External Armoury 023



<b>Material Description:</b>	No Suspect Materials Found	
<b>Identification:</b>	N/A	
<b>Approx. quantity:</b>	N/A	
<b>Accessibility</b>	N/A	<i>Assessment Score</i>
<b>Product type:</b>	N/A	N/A
<b>Extent of Damage:</b>	N/A	N/A
<b>Surface Treatment:</b>	N/A	N/A
<b>Asbestos type:</b>	N/A	N/A
<b>Material Assessment Score:</b>		N/A
<b>Priority Assessment Score:</b>		N/A
<b>Action:</b>	N/A	
<b>Comments:</b>	Previously a no access area. Now accessed and no asbestos found	

Document Name	Author	Issued by	Revision Number	Issue Date	Page No
2021	David Kelly	Armour AS	1	18/10/2021	33

**Item No:** 28

**Sample No:** N/A

**Location:** Basement - SPSI - PSI Office 028



<b>Material Description:</b>	No Suspect Materials Found	
<b>Identification:</b>	N/A	
<b>Approx. quantity:</b>	N/A	
<b>Accessibility</b>	N/A	<i>Assessment Score</i>
<b>Product type:</b>	N/A	N/A
<b>Extent of Damage:</b>	N/A	N/A
<b>Surface Treatment:</b>	N/A	N/A
<b>Asbestos type:</b>	N/A	N/A
<b>Material Assessment Score:</b>		N/A
<b>Priority Assessment Score:</b>		N/A
<b>Action:</b>	N/A	
<b>Comments:</b>	Previously a no access area. Now accessed and no asbestos found. Non-asbestos lino under carpet, solid plasterboard and non-asbestos Fibreboard walls. Concrete ceiling. Non asbestos electric heater.	

Document Name	Author	Issued by	Revision Number	Issue Date	Page No
2021	David Kelly	Armour AS	1	18/10/2021	34



## **Section 6: Survey Objectives**

Instructions were received from Kelvin Walker of Wessex RFCA to carry out a Re-Inspection asbestos survey at 165 Port and Maritime, Brest Road, Devon, PL6 5EW in accordance with HSG264 and Armour Analytical's quality procedures.

The survey was carried out on 18 March 2021 by David Kelly with the objective of facilitating a Re-Inspection report.

A survey, with the objective of accessing previously no accessed areas was carried out on 13 October 2021 by David Kelly.

Document Name	Author	Issued by	Revision Number	Issue Date	Page No
2021	David Kelly	Armour AS	1	18/10/2021	35



## **Section 7: Survey Notes**

This report has been written with reference to the various Guidance Notes etc, issued, and current at the date of this report and describes circumstances at the site on the date the investigation took place.

Where similar items exist in the building, only one or two samples may have been taken to ascertain the material content. It was assumed that similar products were of the same material.

Any person undertaking work within the buildings should be told of the presence of asbestos. This briefing also applies to any other person associated with the site, including staff, sub-contractors and others.

The drawings in the report are not to scale and are illustrative only to indicate approximate locations. The descriptions used are for location identification purposes.

All the recommendations described in this report are based upon assumptions made after consideration of the type of material, condition of the material, its location, analysis result and type of use the area is thought to be subjected to. However, statutory authorities or others could require amendments based on local knowledge, change in legislation, change in use or indeed other conditions or criteria.

Samples taken from floor tiles (or similar material) may include a bitumen adhesive as part of the sample. It is known that some proprietary brands of bitumen have an asbestos content, and this will be included as an integral part of the bulk sample unless otherwise stated.

**Due to the artex being non-homogenous, it is recommended to treat all areas as containing asbestos if you have a positive sample of artex.**

Document Name	Author	Issued by	Revision Number	Issue Date	Page No
2021	David Kelly	Armour AS	1	18/10/2021	36

## Section 8: Material Assessment Algorithm

Variable	Score	Examples
Product type	1	Vinyl, 'Bakelite', Cement, Textured Coating, Non-Friable Debris, Floor Tiles, Bitumen, Reinforced Plastics, Mastic (putty), Windowsills
	2	Asbestos Insulating Board, Paper, Rope, Burned Cement Debris, Flashguards, Gaskets
	3	Pipe Insulation, Spray Coating, Friable Debris, Loose Fill Asbestos
Condition / Damage	0	Good
	1	Slight / Minor Damage
	2	Moderate Damage – Breakage to Surface Treatment
	3	Major Damage – Smashed or Exposed Material
Surface Treatment	0	Non-Friable E.G. Vinyl
	1	Enclosed Insulation, Encapsulated AIB, Unsealed Cement, Woven Material, Paper
	2	Unsealed AIB, Encapsulated Insulation, Encapsulated Pipe Lagging
	3	Unsealed Insulation, Spray Coating, Unsealed Pipe Lagging
Asbestos Type	1	Chrysotile
	2	Amosite & Other Amphiboles
	3	Crocidolite

The scores from each of the four sections are added together to produce a risk score:

Risk score	Risk assessment
<b>10 or more</b>	High risk
<b>7 – 9</b>	Medium risk
<b>5 – 6</b>	Low risk
<b>4 &amp; below</b>	Negligible risk

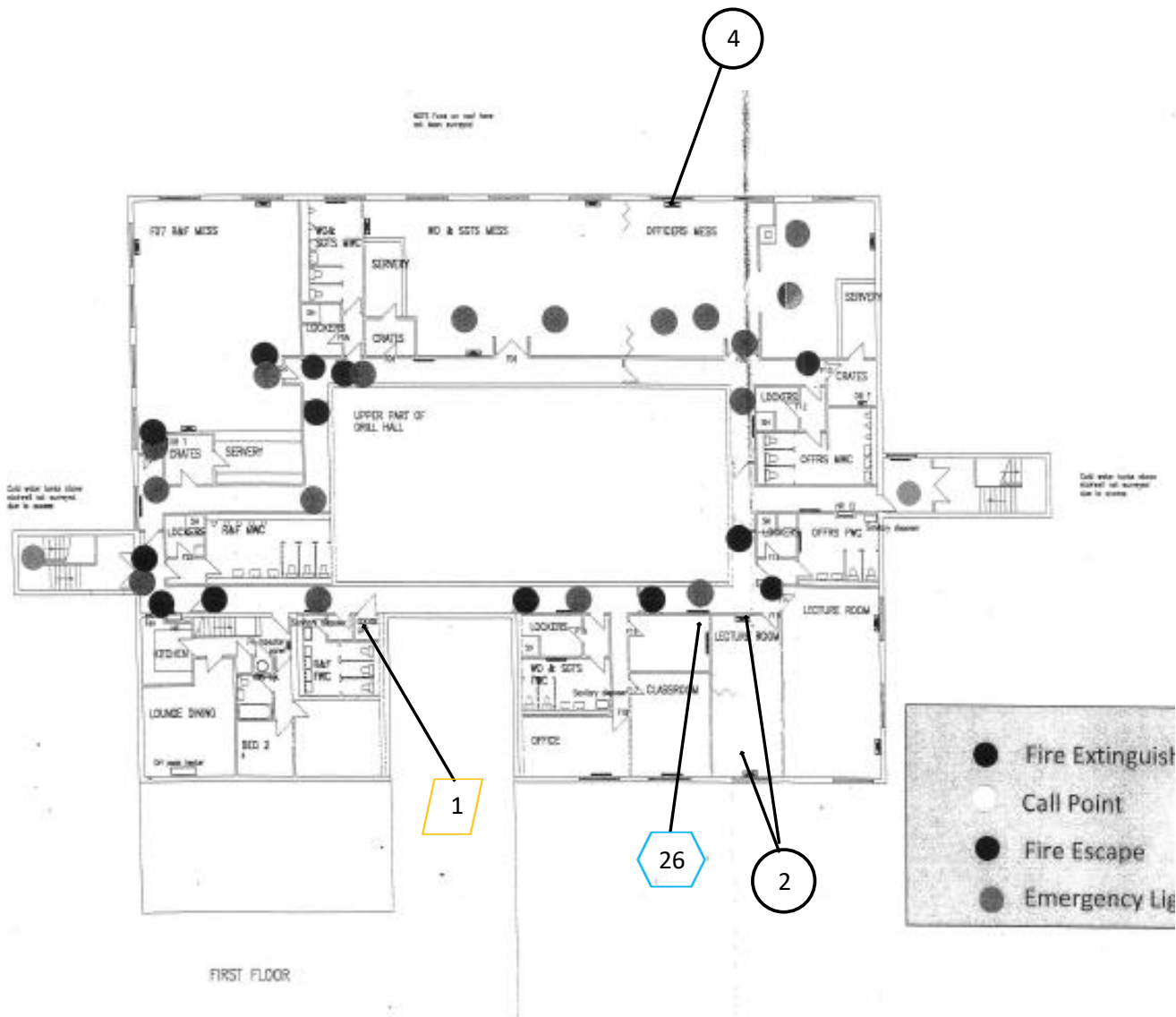


## **Section 9: Certificates of Bulk Analysis**

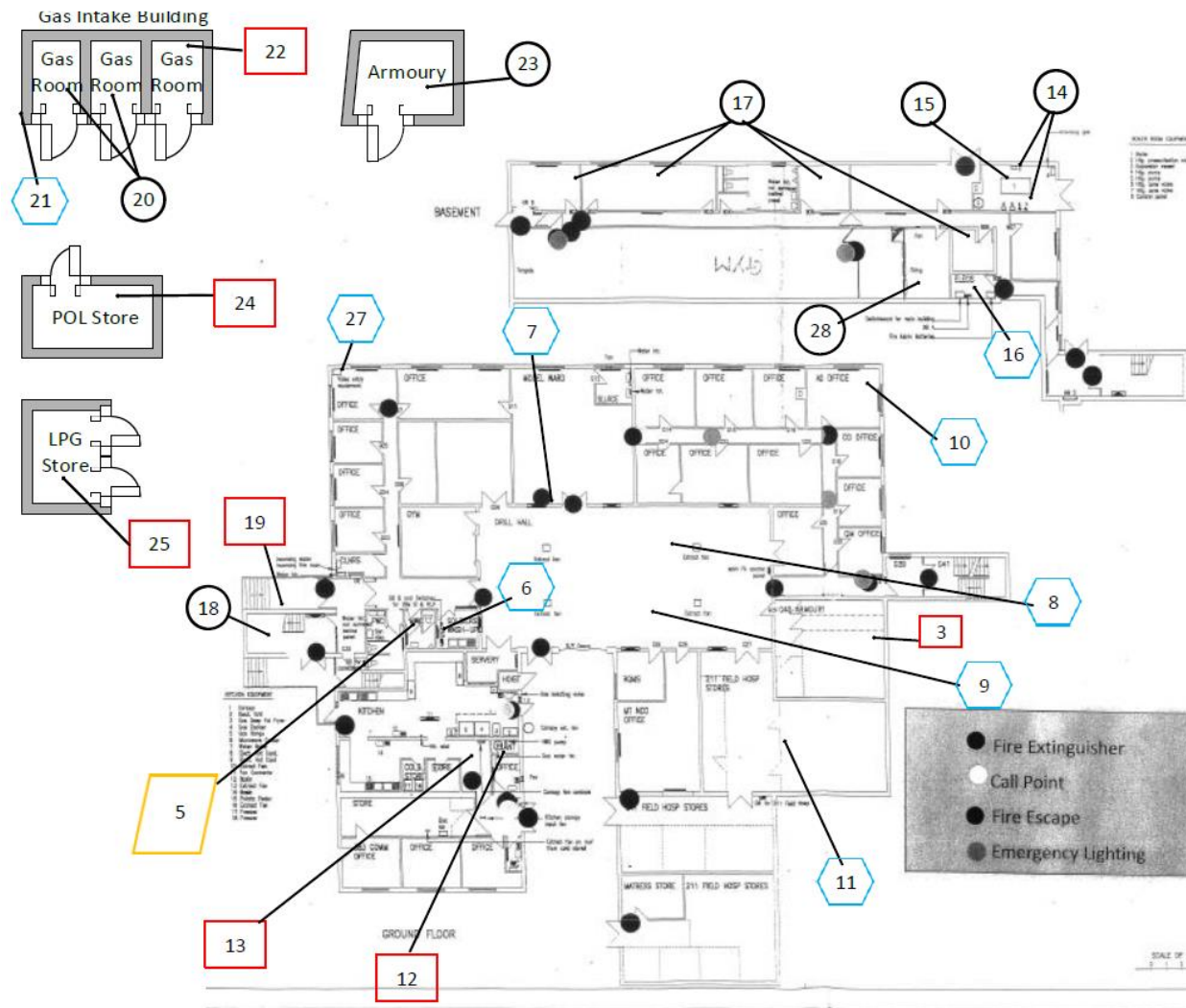
No samples were taken during this survey







Document Name	Author	Issued by	Revision Number	Issue Date	Page No
2021	David Kelly	Armour AS	1	18/10/2021	38

## Section 10: Site Plan



Document Name	Author	Issued by	Revision Number	Issue Date	Page No
2021	David Kelly	Armour AS	1	18/10/2021	39



Key	
	Visual Inspection
	Asbestos Detected (Positive Item)
	No Asbestos Detected (Negative Item)
	Presumed to Contain Asbestos
	Strongly Presumed to Contain Asbestos
	No Access

Document Name	Author	Issued by	Revision Number	Issue Date	Page No
2021	David Kelly	Armour AS	1	18/10/2021	40





**I the surveyor can confirm that this report is accurate to my findings onsite and this survey has been Content checked by myself.**

**Checked by: Will Fyles**

**Date: 18/10/2021**

**I the Admin Manager can confirm that this report is accurate to the paperwork received and this survey has been quality checked by myself.**

**Checked by: Andrea Bansee**

**Date: 18/10/2021**

**Report Compiled By**

**Armour Analytical Services Ltd, Admirals Yard, Station Road, Bristol, BS34 6LR**

Document Name	Author	Issued by	Revision Number	Issue Date	Page No
2021	David Kelly	Armour AS	1	18/10/2021	41