

WX32-A-20240115

Issued by DIO TS PGE

---



# Defence Infrastructure Organisation

## **Gas Safety Management Plan (Section A)**

**Dorchester ARC CTC ACF ATC**

**07/04/2025**

**Produced to meet the requirements of the Gas Safety  
(Installation and Use) Regulations 1998**

Unique Document Reference:

Establishment: Dorchester ARC CTC ACF ATC

WX32-A-20240115

Issued by DIO TS PGE

**ESTABLISHMENT KEY PERSONALITIES (GAS) CONTACTS**

Role	Name	Tel No.	Email
<b>Head of Establishment</b>	Lt Col Oliver Bevan	07802 881277	<a href="mailto:oliver.bevan144@mod.gov.uk">oliver.bevan144@mod.gov.uk</a>
<b>Establishment's SHEF</b>	Steve Barnes	07946 720697	<a href="mailto:Steve.barnes163@mod.gov.uk">Steve.barnes163@mod.gov.uk</a>
<b>Establishments 4C's Coordinator</b>	Jozek Stanko	07521 115560	<a href="mailto:jozek.stanko395@mod.gov.uk">jozek.stanko395@mod.gov.uk</a>
<b>Senior DIO Estate Representative or Equivalent</b>	Mark Cubitt	07955 280440 01823 217949	<a href="mailto:wx-est-hd@rfca.mod.uk">wx-est-hd@rfca.mod.uk</a>
<b>Site DIO Estate Representative or Equivalent</b>	Kelvin Walker	01823 217942 07508 130359	<a href="mailto:wx-est-mgr2@rfca.mod.uk">wx-est-mgr2@rfca.mod.uk</a>
<b>MMO Site Manager or equivalent</b>	Paul Wakeford	07356 101565	<a href="mailto:paul.wakeford@vivodefence.com">paul.wakeford@vivodefence.com</a>
<b>Gas Safety Manager (GSM)</b>	Justin Westcott	07793 220820	<a href="mailto:justin.westcott@vivodefence.com">justin.westcott@vivodefence.com</a>
<b>Gas Responsible Person (GRP)</b>	Ian Jackson	07887 760568	<a href="mailto:ian.jackson2@vivodefence.com">ian.jackson2@vivodefence.com</a>

The Content of this Gas Safety Management Plan (GSMP) have been Approved by the Gas Safety Manager:

Signature: JP Westcott

Date: 07/04/2025

**Authorisation for Implementation**

The content and format of this GSMP has been agreed and authorised for implementation by Defence Infrastructure Organisation Technical Services Principal Gas Engineer (DIO TS PGE) and a unique reference number has been generated to support this.

Approved – J Obbard PGE – 15 January 2024

The Content of this GSMP have been agreed by the Senior DIO Estate Representative or Equivalent and future works following the findings will be supported:

Signature:

*M Cubitt*

Date: 28/04/2025

The content of this GSMP have been agreed by the Head of Establishment and future works following the findings will be supported

Signature: O.Bevan

Date: 04/06/25

WX32-A-20240115

Issued by DIO TS PGE

## REVIEWS AND AMMENDMENTS

GSMPs are 'living documents' that should be subject to continual review and updating as required. Although the level of attention required will vary considerably depending on the size and complexity of each site, GSMPs should be reviewed at least once per quarter by the GRP, unless otherwise agreed by the PGE. Although it is likely that changes are not required at each review, the date of review and any changes made should be indicated on the tables below. The review of the GSMP will include a site visit to ensure that the site and the content of the GSMP remain valid. The reviews and amendments made will be deleted during the DIO TS three yearly review when the GSMP is re-authorised by the PGE.

Date	Page No.	Amendment
14/06/2022	All	Initial development
14/09/2022	N/A	No amendment or update required
14/12/2022	N/A	No amendment or update required
14/03/2023	N/A	No amendment or update required
18/07/2023	N/A	No amendment or update required
18/10/2023	ii	Updated SHEF details
15/01/2024	N/A	No amendment or update required
20/02/2024	10	Updated main building new boiler details, CAD drawings to be amended.
13/06/2024	N/A	No amendment or update required
13/09/2024	ii & 2	Updated Head of Estate
18/10/2024		GSM re-authorisation (previously authorised 18/10/2023)
05/12/2024	N/A	No amendment or update required
21/02/2025	ii	Update details of key personnel (GSM & RP)
21/02/2025	2. (1.4)	Change MMO details / personnel (Vivo – GSM & RP)
21/02/2025	3. (1,5)	Changes to emergency number
04/04/2025	ii	Update contact list

Unique Document Reference:

Establishment: Dorchester ARC CTC ACF ATC

WX32-A-20240115

Issued by DIO TS PGE

Date	Reviewed by	Authorised by	Comments
14/06/2022	D Cooper		Initial development
14/09/2022	D Cooper		Q1 review
14/12/2022	D Cooper	N King	Q2 review
14/03/2023	D Cooper		Q3 review
18/07/2023	D Cooper		Annual review
18/10/2023	D Cooper	N King	Q1 review
15/01/2024	D Cooper		Q2 review
20/02/2024	D Cooper		Site visit
13/06/2024	D Cooper		Q1 review
13/09/2024	D Cooper		Review
18/10/2024	Neville King	Neville King	GSM re-authorisation
05/12/2024	D Cooper		DNV demobilisation review
21/02/2025	Ian Jackson	J Westcott	3 monthly review following change to Vivo Defence
07/04/2025	J Westcott	J Westcott	Initial review/approval

WX32-A-20240115

Issued by DIO TS PGE

---

## FORWARD

MOD, as a gas conveyor within Great Britain, has submitted an Exemplar Gas Safety Case (MOD GSC) to demonstrate compliance with the Gas Safety (Management) Regulations 1996 (GS(M)R). Maintenance Management Organisations (MMO's) are engaged who have the overall contractual responsibility to operate and maintain the gas network assets under their Contract, including the management of the safe flow of gas within the system and the provision of an emergency service. The MOD delegate specific duties to the MMO but accountability for gas safety on each site rests with the Head of Establishment.

Whilst gas downstream of the Emergency Control Valve (ECV) fall outside of the scope of (GS(M)R) similar criteria as those referred to above must be accommodated within an appropriate management system. The specific criteria required to adequately manage gas infrastructure downstream of the ECV are described in the Gas Safety (Installation and Use) Regulations 1998 (GS(IU)R).

The MOD GSC considers all parts of the MOD estates gas supply system that forms part of the gas supply network. This includes all parts of the MOD gas network from the Bulk Primary Meter Installation to the individual gas appliances and the safe release of the products of combustion. The MOD GSC considers primarily those matters that relate to the management of the safe flow of gas within the system and the provision of an emergency service for all aspects of the gas system.

Following initial approval of the Gas Safety Management Plans (GSMPs) by the DIO Principal Gas Engineer (PGE), the Gas Safety Manager (GSM) is required to reapprove this GSMP annually. GSMPs must be submitted to DIO PGE every three years for authorisation.

GSMP Section A document contains site specific details of the establishments utilisation infrastructure to assist with measures to ensure compliance with the GS(IU)R for installation pipework and associated components.

GSMP Section B documents contain site specific details and arrangements as a direct annex to the MOD GSC in line with the Gas Safety (Management) Regulations 1996 (GS(M)R).

GSMP Section C document contains site specific details and requirements of the establishment's LPG networks.

Although the legal status of this document applies in the UK only, the MOD apply the same requirements to the management of gas on its overseas estate, in accordance with the currently published Secretary of State's Health and Safety policy statement.

WX32-A-20240115

Issued by DIO TS PGE

## Contents

<b>ESTABLISHMENT KEY PERSONALITIES (GAS) CONTACTS .....</b>	<b>II</b>
<b>REVIEWS AND AMMENDMENTS .....</b>	<b>III</b>
<b>FORWARD.....</b>	<b>V</b>
<b>1 THE DUTY HOLDER AND ESTABLISHMENT LEVEL KEY PERSONALITIES.....</b>	<b>1</b>
1.1. GAS SAFETY CASE DUTY HOLDER.....	1
1.2. DIO TECHNICAL SERVICES PRINCIPAL GAS ENGINEER (PGE). ....	1
1.3. ESTABLISHMENT PERSONALITIES.....	1
1.4. MAINTENANCE MANAGEMENT ORGANISATION (MMO).....	2
1.5. ADDITIONAL GAS CONTACTS. ....	3
<b>2 SITE SPECIFIC DETAILS.....</b>	<b>4</b>
2.1 SITE OVERVIEW. ....	4
2.2 NATURAL GAS.....	4
2.3 LPG GAS. ....	5
2.4 EXTERNAL INSTALLATION PIPEWORK. ....	5
2.5 DETAILS OF BUILDINGS SERVED.....	6
2.6 ADDITIONAL DETAILS OF BUILDINGS BEING SERVED.....	6
<b>3 METER DETAILS .....</b>	<b>7</b>
3.1 PRIMARY METER DETAILS.....	7
3.2 UTILISATION METER DETAILS (METERS SUPPLIED DIRECTLY FROM THE MOD GAS NETWORK).....	7
<b>4 DIAGRAMS AND DRAWINGS.....</b>	<b>8</b>
4.1 LINE DIAGRAMS FOR BUILDING(S) INTERNAL GAS INSTALLATION PIPEWORK.....	8
4.2 ADDITIONAL DRAWINGS. ....	8
<b>5 GAS INCIDENTS.....</b>	<b>9</b>
5.1 SITE REPORTING PROCEDURES FOR DEALING WITH GAS INCIDENTS.....	9
<b>6 GAS EQUIPMENT .....</b>	<b>10</b>
6.1 EQUIPMENT LIST.....	10
6.2 ADDITIONAL EQUIPMENT INFORMATION.....	11
<b>7 ANNEXES .....</b>	<b>12</b>

WX32-A-20240115

Issued by DIO TS PGE

## 1 THE DUTY HOLDER AND ESTABLISHMENT LEVEL KEY PERSONALITIES

### 1.1. Gas Safety Case Duty Holder.

The duty holder for the MOD Gas Safety Case is the Permanent Under Secretary for Defence (PUS). However, day to day responsibility for the preparation and maintenance of the document is delegated to the DIO TS Head of Engineering and Construction, who also has the responsibility for managing the system in accordance with the Safety Case. PUS delegates maintenance responsibility to the Top-Level Budget Holders (TLB's), to manage safety of the gas network. The TLB's utilise MOD Contracts i.e., MMOs who have responsibility for maintaining the gas network on behalf of the MOD.

Name:	Permanent Under Secretary
Address:	Main Building Horse Guards Parade Whitehall London SW1A 2HB

### 1.2. DIO Technical Services Principal Gas Engineer (PGE).

The PGE assumes the role of Senior Authorising Authority which is a term used within the MOD to recognise the authority of the person responsible for overseeing the appointment of, and auditing Authorising Engineers (AEs). For Gas the AEs are replaced by Gas Safety Managers (GSMs).

Name:	Jeremy Obbard
Address:	DIO HQ Whittington Barracks Lichfield WS14 9TJ
☎:	07748 903260
✉:	Jeremy.obbard100@mod.gov.uk

### 1.3. Establishment Personalities.

Name of Establishment:	Dorchester ARC CTC ACF ATC	
Establishment Address:	Poundbury Road, Dorchester, DT1 1TA.	
Head of Establishment (HoE)  (This is the most senior MOD person identified, by the chain of command, as responsible for the establishment. The HoE holds accountability for ensuring site compliance with the requirements of	Name: Position: Organisation: Address:	Lt Col Oliver Bevan CO British Army, MOD BN HQ 6 RIFLES Block 7 Wyvern Bks Exeter Devon EX2 6AR ☎: 07802 881277 ✉: <a href="mailto:oliver.bevan144@mod.gov.uk">oliver.bevan144@mod.gov.uk</a>

WX32-A-20240115

Issued by DIO TS PGE

GSMR and the MOD GSC, including this GSMP.)		
Senior DIO representative or equivalent  (This may be the SEFM, but will vary depending on the contract this establishment falls under)	Name: Position: Organisation: Address:  ☎: ✉:	Mark Cubitt Head of Estates Wessex Reserve Forces' and Cadets' Association Mount House Mount Street Taunton Somerset TA1 3QE TBC <a href="mailto:wx-est-hd@rfca.mod.uk">wx-est-hd@rfca.mod.uk</a>

**1.4. Maintenance Management Organisation (MMO).**

The MMO for this establishment is:		<b>VIVO</b>
Gas Emergency Helpdesk (24 Hours)  Note: Please do not contact the general public National Gas Emergency Service for suspected escapes on RFCA infrastructure	Organisation:     ☎:	VIVO Helpdesk Helpdesk 25 Goodlass Road Hunts Cross Liverpool L24 9HJ  0800 030 9320
Gas Safety Manager (GSM)	Name: Organisation: Address:   ☎: ✉:	<b>Justin Westcott</b> VIVO BLD 003 CTCRM Lymptone Nr Exmouth Devon EX8 5AR  07793 222820 <a href="mailto:Justin.Westcott@vivodefence.com">Justin.Westcott@vivodefence.com</a>
Gas Responsible Person (GRP)	Name: Organisation: Address:   ☎: ✉:	<b>Ian Jackson</b> VIVO BLD 311 – Estates Office Cracknore Hard Lane Southampton SO40 4ZG  07887 760568 <a href="mailto:Ian.Jackson2@vivodefence.com">Ian.Jackson2@vivodefence.com</a>



WX32-A-20240115

Issued by DIO TS PGE

1.5. Additional Gas Contacts.		
Gas Supplier	Organisation: Address:   :  :	Total Energies Gas & Power 55-57 High Street, Redhill, Surrey, RH1 1RX. 01737 275 746 <a href="mailto:gp.redhill.ccs@totalenergies.com">gp.redhill.ccs@totalenergies.com</a>
LPG Supplier	Organisation: Address:   :  :	Not applicable - no bulk LPG on site.
Meter Asset Manager (MAM)	Organisation: Address:   :  :	Energy Assets Ltd 6 Almondvale Business Park, Almondvale Way, Livingston EH54 6GA 0150 6405405 <a href="mailto:info@energyassetsnetworks.co.uk">info@energyassetsnetworks.co.uk</a>
National Gas Emergency Centre (24 Hours)	 :	0800 111 999

WX32-A-20240115

Issued by DIO TS PGE

## 2 SITE SPECIFIC DETAILS

### 2.1 Site Overview.

A brief description of the establishment and its current use. This should include how many separate sites are present and the number of buildings being supplied by gas.

Dorchester ARC CTC ACF ATC has six buildings on site with three being supplied with gas from the EGDN.

The main building is used as Office Space, Kitchen, Drill Hall, bar and a plantroom. There is accommodation for a Caretaker and separate accommodation for cadets/ reservists.

C Company 6 Rifles are based on this site.

### 2.2 Natural Gas.

A brief description of the natural gas installations, including how many MOD networks are present, the number of buildings each MOD network supplies and how many buildings are supplied direct from the EGDN. This should also include any demarcations in place between stakeholders and responsibilities.

#### Main Building

The gas supply is fed direct from the EGDN on to this site. There is a 63mm external PE service riser that transitions to 2" steel before entering the internal meter cupboard to feed the MAM owned and operated meter and regulator, which supplies the 2" MoD installation pipework at low pressure for one building only. The gas is used for catering, heating, and hot water.

#### Meter

MDA25 (25m<sup>3</sup>/hr) - Serial Number: A00738 06 A6 2006 - MPRN:19169710

The MoD is responsible from the meter outlet valve up to and including all appliance.

#### Boiler Room

The plant room has two 93.3 kw room sealed fan flued boilers that are fed by 1½" steel and 42mm copper installation pipe via the 2" steel pipe in the drill hall.

#### Kitchen

The main building kitchen has a grill, and two cookers fed from 1¼" steel pipe via the 2" steel installation pipe in the drill hall.

The installation pipework is not identified as gas throughout its full length.

There is Gas – vent safety interlock to ensure safe removal of products of combustion from the gas catering equipment.

#### Bar

In the main building bar, there is a 3.5 kw Burley flueless fire fed by 8mm copper tube.

WX32-A-20240115

Issued by DIO TS PGE

**PSAO Office**

In the PSAO office there is a 3.5 kw Burley flueless fire.

**Building 16 (Accommodation)**

The gas supply is fed direct from the EGDN on to this site. There is a 19mm external PE service riser which enters the external meter to feed the MAM owned and operated meter and regulator, which supplies the MoD installation pipework at low pressure (21mbar) for one building only. The gas is used for cooking (isolated) heating and hot water by a 24-kw combination boiler.

**Meter**

G4 (6m<sup>3</sup>/hr) - Serial Number: K0016628 14 01 - MPRN: 3920489901

The MoD is responsible from the meter outlet connection up to and including all appliance.

**Building 16/2 (Caretaker's House)**

The gas supply is fed direct from the EGDN on to this site. There is a 19mm external PE service riser that enters the external meter to feed the MAM owned and operated meter and regulator, which supplies the MoD installation pipework at low pressure (21mbar) for one building only. The gas is used by a hob for cooking, fire for space heating and a boiler for heating and hot water.

**Meter**

E6 (6m<sup>3</sup>/hr) - Serial Number: S16736932161 - MPRN:3920490100

The MoD is responsible from the meter outlet connection up to and including all appliance.

**2.3 LPG Gas.**

A brief description of the LPG installations, including how many compounds are at the establishment, condition and make up of each compound, the number and size (kg) of vessels in each compound, the number of LPG MOD networks, the number of buildings supplied from the LPG MOD networks, how many buildings are supplied direct and not from an LPG MOD network. Details of the LPG pipework after the first stage regulator up to the building(s).

*Note: The demarcation agreement between the LPG supplier and the MOD has been agreed and the MOD take responsibility from the outlet of the first stage regulator. The LPG supplier is responsible for the vessel, vessel associated components (excluding any earth bonding) pipework up to and including the first stage regulator.*

N/A – no LPG on this site.

**2.4 External Installation Pipework.**

A brief description of the external installation pipework (above or below ground) on each building. This is from the ECV to where it enters the building(s), the material, diameter, lengths, supports, conditions etc.

N/A - no external installation pipework on this site.

WX32-A-20240115

Issued by DIO TS PGE

**2.5 Details of buildings served.**

A list of the buildings being supplied by gas via an MOD network, LPG compound or directly from the EGDN and the usage of the gas (catering, hot water, heating, fire training, etc) at the building.

Ser	Building Number	Building description	Supplied by	Gas usage
1	Main building	Offices, kitchen and drill hall	EGDN	Heating, hot water and catering.
2	16	Accommodation	EGDN	Heating, hot water and cooking.
3	16/2	Staff accommodation	EGDN	Heating, hot water and cooking

**2.6 Additional details of buildings being served.**

Any additional detail about a building that may be required or useful in an emergency or requires more details than captured above.

*NOTE: This section is to be used to capture the Service Family Accommodation (SFA) properties where it is not practical to fit above.*

N/A – information captured above.

Unique Document Reference:

Establishment: Dorchester ARC CTC ACF ATC

WX32-A-20240115

Issued by DIO TS PGE

### 3 METER DETAILS

#### 3.1 Primary Meter Details.

The following table describes the basic arrangement of the primary meter installation(s). (These are the responsibility of the MAM)

*NOTE: More detail on the primary meters that supply MoD networks can be seen in the GSMP part B.*

<b>Number of primary meter installations:</b>		1							
Meter Name / ID	MPRN	Supplying (MOD network ID or Bldg number)	location	Incoming pressure tier – HP, IP, MP, LP	Outlet pipeline				Max Flow (M <sup>3</sup> hr)
					P tier – HP, IP, MP, LP	Pressure (mbar)	Material	Diameter (mm)	
MDA25- A00738 06 A6 2006	19169710	Main building	Entrance to main building	LP	LP	22.20	Steel	50	25
G4 - K0016628 14 01	3920489901	16	External to ACF Accommodation	LP	LP	20.9	Copper	22	6
E6 - S16736932161	3920490100	16/2	External to Caretaker House	LP	LP	21.1	Copper	22	6

#### 3.2 Utilisation Meter Details (meters supplied directly from the MoD gas network).

The following table describes the basic arrangement of the utilisation meter installation(s). (These are the responsibility of the MOD)

Number of utilisation meter installations:		N/A - no utilisation meters on this site								
Meter Name / ID	Being supplied from (MOD network ID)	Inlet pipeline				Outlet pipework				Max Flow (M³ hr)
		P tier – HP, IP, MP, LP	Pressure (mbar)	Material	Diameter (mm)	P tier – HP, IP, MP, LP	Pressure (mbar)	Material	Diameter (mm)	
N/A	N/A	N/A	N/A	N/A	N/A	N/A	N/A	N/A	N/A	N/A

WX32-A-20240115


Issued by DIO TS PGE

## 4 DIAGRAMS AND DRAWINGS

### 4.1 Line diagrams for building(s) internal gas installation pipework.

This section is to contain line diagrams for building internal installation pipework and associated components. This diagram should be fixed to the building at a practical and accessible location as well as within any associated document centres. It may be embedded as a PDF to this document for online use.

*NOTE: Drawings are only required for commercial installations or for installation in commercial settings (non-domestic use). This may mean more installations than listed in IGEN/UP/2 Edition 3 (4.2.14), depending on the installations intended use.*

Drawing Number	Building	Comments
WX32-A-A3	Main building, Caretaker's house and ACF accommodation	 WX32-A-A3.pdf

### 4.2 Additional drawings.

This section is to contain any additional drawings that may be required or may be of benefit to this GSMP or emergency procedures.

Drawing Number	Building	Comments
N/A	N/A	No addition drawings

WX32-A-20240115

Issued by DIO TS PGE

---

## 5 GAS INCIDENTS

### 5.1 Site reporting procedures for dealing with gas incidents.

This section is to contain the establishment's site-specific procedure for dealing with reports of gas incidents with regards the external installation pipework, internal installation pipework and equipment. Details of all individuals with responsibilities under this procedure should be included.

Procedure for an incident involving the gas installations on site:

- Call VIVO Helpdesk line on 0800 030 9320, open 24 hours per day.
- VIVO helpdesk will contact 0800 111 999
- The EGDN shall attend and make safe a gas incident.
- Vivo Gas Responsible Person shall be informed immediately by the site personnel.

Unique Document Reference:

Establishment: Dorchester ARC CTC ACF ATC

WX32-A-20240115

Issued by DIO TS PGE

## 6 GAS EQUIPMENT

### 6.1 Equipment List.

This section is to include details of all the gas equipment being used at the establishment.

Building number	Equipment location	Equipment type (make, model)	Serial Number	Appliance kW rating	Flue classification	Comments
Main building	Boiler Room	Vaillant ecoTEC plus VU GB 1006/5-5 R5	2122300100107802010005261N0	93.3	Fan flued room sealed	New install, commissioned 15/2/24
Main building	Boiler Room	Vaillant ecoTEC plus VU GB 1006/5-5 R5	2122300100107802010005394N5	93.3	Fan flued room sealed	New install, commissioned 15/2/24
Main building	Kitchen	Blue Seal grill G91B	400658	8.8	Flueless	
Main building	Kitchen	Blue Seal G570 Bulls eye range cooker	331951	20.5	Flueless	
Main building	Kitchen	Blue Seal 6 burner range cooker	403497	47.0	Flueless	
Main building	Bar	Burley flueless gas fire G4121	013633	3.5	Flueless	
Main building	PSAO office	Burley flueless gas fire G4121	013639	3.5	Flueless	
16	External cupboard	Baxi 105 Combi	ACK0606	24.0	Fan flued	
16	Kitchen	Creda Hob	N/A	9.0 (assumed)	Flueless	Not in use (isolated). No record available Data badge not accessible



Unique Document Reference:

Establishment: Dorchester ARC CTC ACF ATC

WX32-A-20240115

Issued by DIO TS PGE

16/2	External cupboard	Vaillant Eco Tech Plus 824	N/A	24	Fan flued	No record available. Data badge not accessible
16/2	Kitchen	Creda Hob	N/A	9 (assumed)	Flueless	No record available. Data badge not accessible
16/2	Lounge	Valor Black Beauty Fire	N/A	4 (assumed)	Open flue	No record available. Data badge not accessible

**6.2 Additional equipment information.**

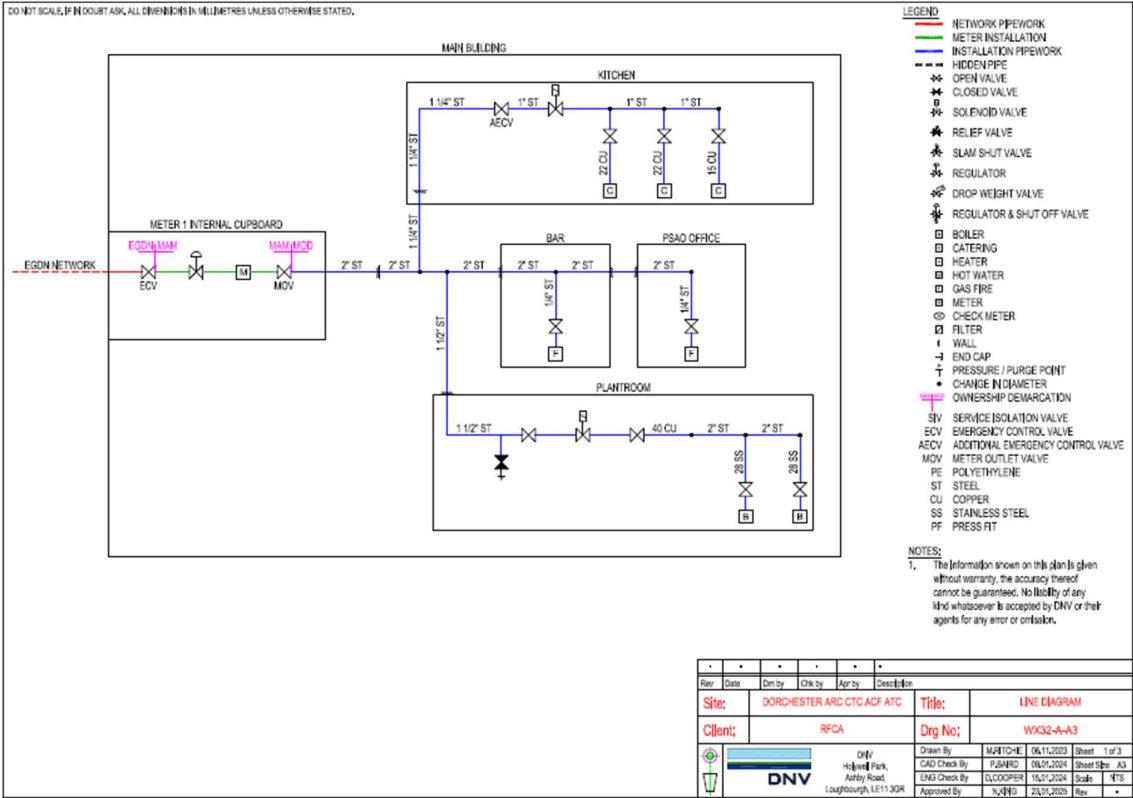
This section is to contain any additional equipment information that may be required or may be of benefit to this GSMP or emergency procedures.

Kitchen Canopy Gas Interlock is installed in main building kitchen, and emergency stop valve adjacent to kitchen door.

The main building plant room has an inline solenoid valve, which is believed to be fire alarm linked, unable to validate and test.

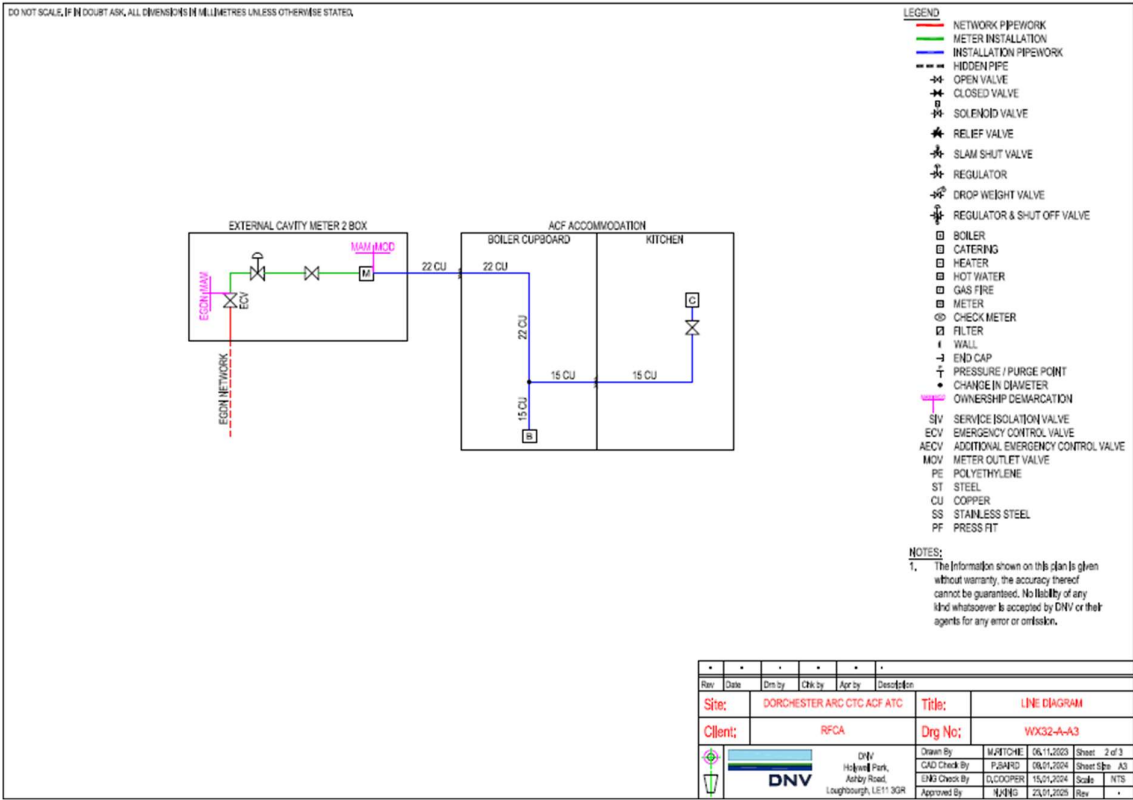
WX32-A-20240115  
Issued by DIO TS PGE

7 ANNEXES



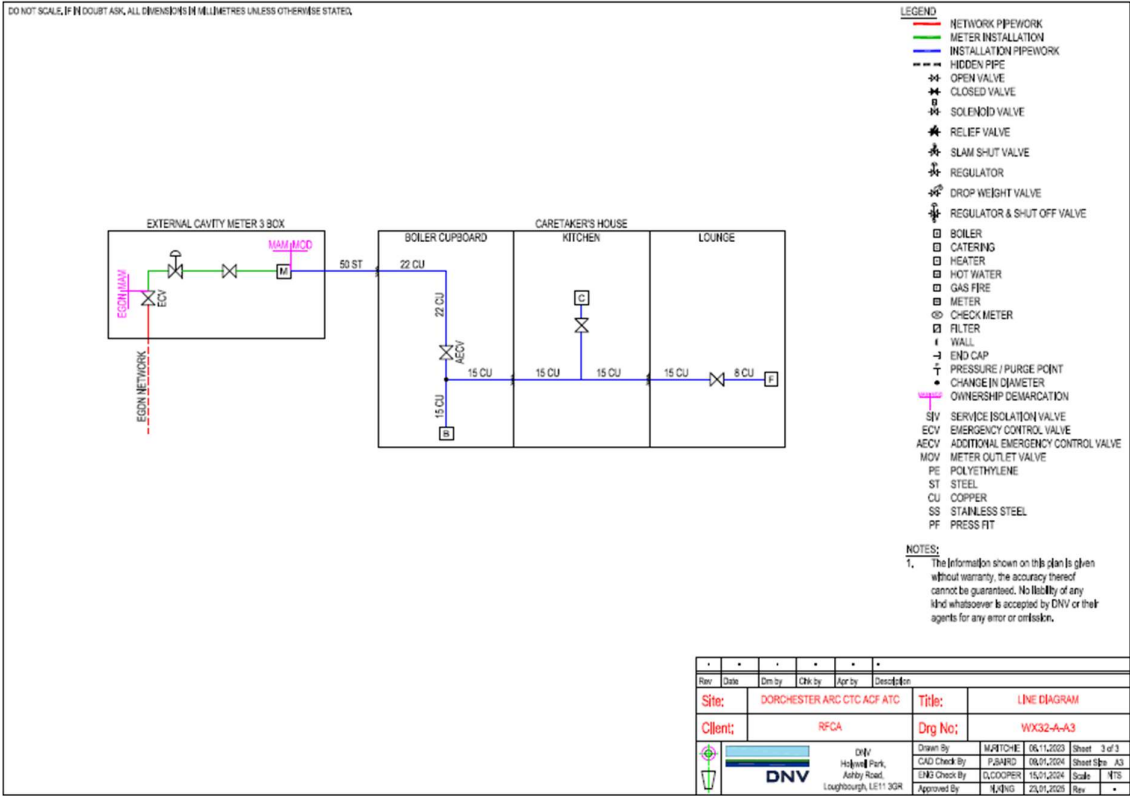
Main Building

WX32-A-20240115  
Issued by DIO TS PGE



ACF Accommodation

WX32-A-20240115  
Issued by DIO TS PGE



Caretaker's House