

Project Number A-00519 (3700)

**Re-Inspection
Asbestos Survey Report - Revised**

**243 Field Hospital
Ashmead Road
Somerset
BS31 1SX**



Working in Partnership with Shield Services Group



Document Name	Author	Issued by	Revision Number	Issue Date	Page No
2021	David Kelly	Armour AS	1	21/10/2021	1

Contents

Section	
1	Contact Details
2	Executive Summary
3	Site Description and Survey Information
4	Positive, Presumed or No Access Items
5	Negative Photos Sheets
6	Survey Objectives
7	Survey Notes
8	Material Assessment Algorithm
9	Certificates of Bulk Analysis
10	Site Plan

Document Name	Author	Issued by	Revision Number	Issue Date	Page No
2021	David Kelly	Armour AS	1	21/10/2021	2

Section 1: Contact Details

Client Details:		Instructing Party:	
Wessex RFCA Mount House Mount Street Taunton TA1 3QE		Wessex RFCA Mount House Mount Street Taunton TA1 3QE	
Contact Name:	Kelvin Walker	Contact Name:	Kelvin Walker
Tel: 01823 250 116	Fax: N/A	Tel: 01823 250 116	Fax: N/A

Site Address:		Report Author:	
243 Field Hospital Ashmead Road Somerset BS31 1SX		Armour Analytical Services Admirals Yard Station Road Bristol BS34 6LR	
Contact Name:	Kelvin Walker	Contact Name:	Andrea Bansee
Tel: 01823 250 116	Fax: N/A	Mobile: 07468 535 836	

Lead Surveyor's Name:	Lead Surveyor's Authorising Signature:
David Kelly	

Document Name	Author	Issued by	Revision Number	Issue Date	Page No
2021	David Kelly	Armour AS	1	21/10/2021	3

Section 2: Executive Summary

Sample Number	Sample Type	Location	Analysis
DK/01	Skirting Board Tiles and Adhesive - Vinyl Products	Ground Floor Boiler Room G01 002	N.A.D.I.S
DK/02	Gaskets - Gaskets (compressed)	Ground Floor Boiler Room G01 024	N.A.D.I.S
DK/03	Kitchen Sink Pad	Caretakers Flat – Kitchen – 001	N.A.D.I.S
DK/04	Boxing/Ceiling – Insulation Board	Caretakers Flat – Kitchen Cupboard - 026	N.A.D.I.S
DK/05	Insulation Board	ATC & ACF Offices & Classrooms – 020	N.A.D.I.S

N.A.D.I.S – No Asbestos Detected in Sample

In addition to the above sampled items, the following items have been either been “Strongly Presumed” To Contain Asbestos or “Presumed” to Contain Asbestos as they were either visually identified in being so, labelled after previously being sampled on prior surveys or not accessible at the time of the survey:

Status	Sample Type	Location
Presumed	Gaskets - Gaskets (compressed)	Basement Boiler Room 011
Presumed	Old Electrical Panels - Gaskets (rope/woven)	Basement Boiler Room 012
Previously Sampled	Floor Tiles and Adhesive - Vinyl Products	Ground Floor Corridors between Main Hall and Junior Mess 003
Previously Sampled	Floor Tiles and Adhesive - Vinyl Products	Ground Floor Office G45 004
Previously Sampled	Floor Tiles and Adhesive - Vinyl Products	Ground Floor QM Store 005
Previously Sampled	Floor Tiles and Adhesive - Vinyl Products	Ground Floor Lobby 006
Presumed	Adhesive under Parquet Flooring - Bituminous Product	Ground Floor Drill Hall 007
Previously Sampled	Floor Tiles and Adhesive - Vinyl Products	Ground Floor Lobby and Store 008
Previously Sampled	Floor Tiles and Adhesive - Vinyl Products	Ground Floor Store G80 009
Previously Sampled	Floor Tiles and Adhesive - Vinyl Products	Ground Floor Store G80 - Cage 010

Document Name	Author	Issued by	Revision Number	Issue Date	Page No
2021	David Kelly	Armour AS	1	21/10/2021	4

Status	Sample Type	Location
Strongly Presumed	Profiled cement roof - Cement Product	Ground Floor Range 019
Presumed	All - No Access Gained	Ground Floor ACF Cadet Hut - Store 020
Strongly Presumed	Gaskets - Gaskets (compressed)	Ground Floor Gas Intake Room 021
Previously Sampled	Panels on Ceiling - Insulating Board	Ground Floor Model Ward 023
Presumed	Boilers - No Access Gained	Ground Floor Boiler Room G01 025
Strongly Presumed	Downpipes - Cement Product	External Main Building 013
Strongly Presumed	Downpipes - Cement Product	External Main Building 014
Strongly Presumed	Soil Pipe - Cement Product	External Main Building 015
Strongly Presumed	Rainwater Hoppers and Packers within - Cement Product	External Main Building 016
Strongly Presumed	Downpipe, Hoppers and Packers within - Cement Product	External QM Stores 017
Strongly Presumed	Profiled Cement Roof - Cement Product	External Stores 018

The presence of asbestos in these areas cannot be ascertained at this time. If any works are to be carried out in these areas in the future, then these works should be approached cautiously.

In accordance with current legislation, any suspect materials encountered in these areas are to be assumed to contain asbestos until proven otherwise. This will normally involve cessation of works in the affected area.

Document Name	Author	Issued by	Revision Number	Issue Date	Page No
2021	David Kelly	Armour AS	1	21/10/2021	5

Section 3: Site Description and Survey Information

Brief description on the general building construction

1970's MOD camp - Consisting of various brick buildings, ammunition bunker and wooden huts.

Caveat for no access areas

All areas accessed.

EXTERNAL MATERIALS

Roof Type	Pitched and Flat
Roof Materials	Felt, Tiles, Cement, Metal
Soffits	Mainly Timber
Fascia	Mainly Timber
Walls	Brick
Verge Under cloaking	None Seen
Guttering	Cast Iron, Plastic
Downpipes	Cast Iron, Plastic, Cement
Window/Door frames	Metal, Timber, UPVC
Other Materials	N/A

INTERNAL MATERIALS

Loft Insulation	Fiberglass
Roof Underlining	Not Seen
Ceilings	Plasterboard, Modern Ceiling Tiles
Walls <i>Internal</i>	Plasterboard, Brick
Floors	Concrete, Carpet, Parquet Flooring, Tiles
Doors/Frames	Timber
Pipework/Insulation	Various
Boxings	Timber
Boiler Make	Various
Flue Pipes	Metal
Storage Heaters	Various - No Asbestos visually identified
Electrical Boxes/Machinery	Various
Ducting/Risers	Brick, Block
Stairs	Concrete
Lift Shafts	Not seen
Other Materials	N/A

Document Name	Author	Issued by	Revision Number	Issue Date	Page No
2021	David Kelly	Armour AS	1	21/10/2021	6

Section 4: Positive, Presumed or No Access Items

Item No:	3	Sample No:	N/A
Location:	Ground Floor - Corridors between Main Hall and Junior Mess 003		

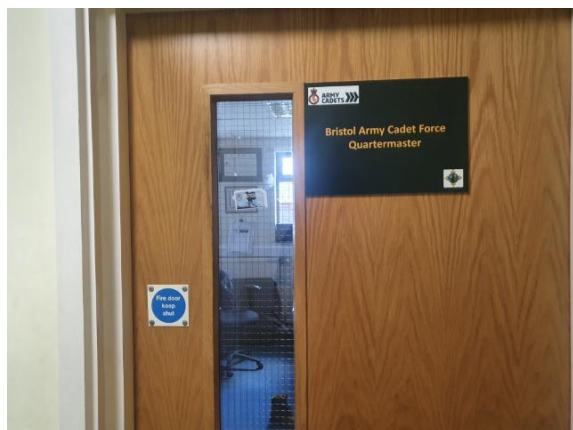


Material Description:	Floor Tiles and Adhesive - Vinyl Products	
Identification:	Previously Sampled - Asbestos Detected	
Approx. quantity:	70 m ²	
Accessibility	Difficult	Assessment Score
Product type:	Vinyl	1
Extent of Damage:	Moderate damage	2
Surface Treatment:	Non-friable	0
Asbestos type:	Chrysotile	1
Material Assessment Score:		4
Priority Assessment Score:		Negligible
Action:	Manage	
Comments:	Previously sampled ref: Armour GR004	

Document Name	Author	Issued by	Revision Number	Issue Date	Page No
2021	David Kelly	Armour AS	1	21/10/2021	7

Item No: 4 **Sample No:** N/A

Location: Ground Floor - Office G45 004

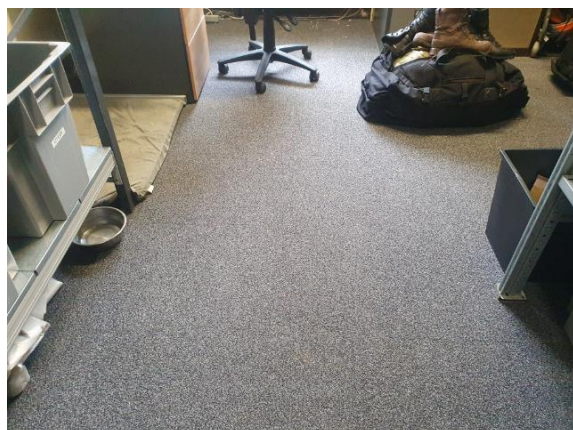


Material Description:	Floor Tiles and Adhesive - Vinyl Products	
Identification:	Previously Sampled - Asbestos Detected	
Approx. quantity:	12 m ²	
Accessibility	Difficult	Assessment Score
Product type:	Vinyl	1
Extent of Damage:	Moderate damage	2
Surface Treatment:	Non-friable	0
Asbestos type:	Chrysotile	1
Material Assessment Score:		4
Priority Assessment Score:		Negligible
Action:	Manage	
Comments:	Previously sampled ref: Armour GR004. Under carpet	

Document Name	Author	Issued by	Revision Number	Issue Date	Page No
2021	David Kelly	Armour AS	1	21/10/2021	8

Item No: 5 **Sample No:** N/A

Location: Ground Floor - QM Store 005



Material Description:	Floor Tiles and Adhesive - Vinyl Products	
Identification:	Previously Sampled - Asbestos Detected	
Approx. quantity:	20 m ²	
Accessibility	Difficult	<i>Assessment Score</i>
Product type:	Vinyl	1
Extent of Damage:	Moderate damage	2
Surface Treatment:	Non-friable	0
Asbestos type:	Chrysotile	1
Material Assessment Score:		4
Priority Assessment Score:		Negligible
Action:	Manage	
Comments:	<p>Previously sampled ref: Armour GR004. Located under carpet.</p> <p>Non asbestos supalux boxing and panel on ceiling above door.</p> <p>No access within boxing</p>	

Document Name	Author	Issued by	Revision Number	Issue Date	Page No
2021	David Kelly	Armour AS	1	21/10/2021	9

Item No: 6 **Sample No:** N/A

Location: Ground Floor - Lobby 006

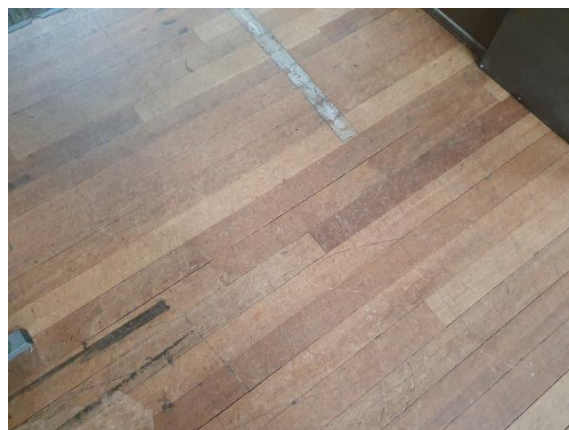
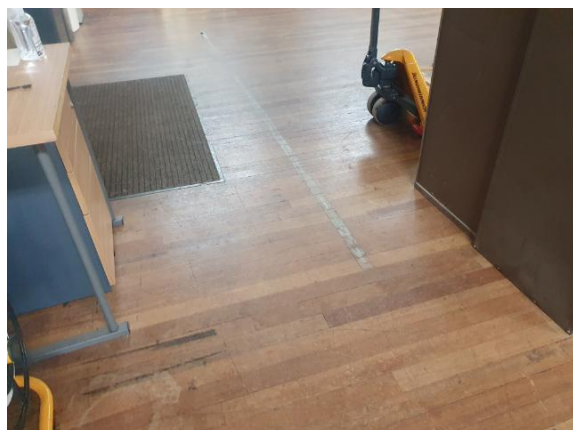


Material Description:	Floor Tiles and Adhesive - Vinyl Products	
Identification:	Previously Sampled - Asbestos Detected	
Approx. quantity:	3 m ²	
Accessibility	Difficult	<i>Assessment Score</i>
Product type:	Vinyl	1
Extent of Damage:	Moderate damage	2
Surface Treatment:	Non-friable	0
Asbestos type:	Chrysotile	1
Material Assessment Score:		4
Priority Assessment Score:		Negligible
Action:	Manage	
Comments:	Previously sampled ref: Armour GR004	

Document Name	Author	Issued by	Revision Number	Issue Date	Page No
2021	David Kelly	Armour AS	1	21/10/2021	10

Item No: 7 **Sample No:** N/A

Location: Ground Floor - Drill Hall 007

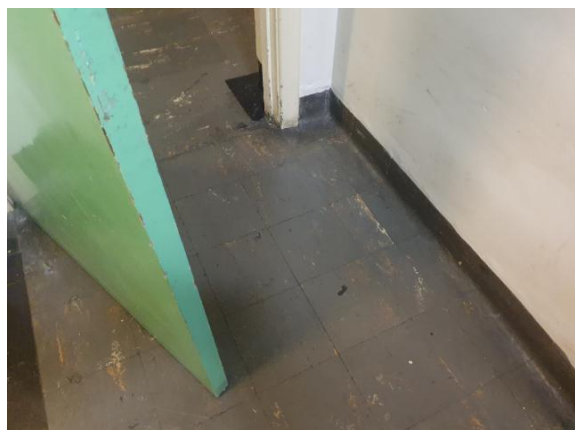


Material Description:	Adhesive under Parquet Flooring - Bituminous Product	
Identification:	Presumed to Contain Asbestos	
Approx. quantity:	100 m ²	
Accessibility	Difficult	<i>Assessment Score</i>
Product type:	Bitumen	1
Extent of Damage:	Minor damage	1
Surface Treatment:	Non-friable	0
Asbestos type:	Chrysotile	1
Material Assessment Score:		3
Priority Assessment Score:		Negligible
Action:	Manage	
Comments:	No access to sample without damaging flooring	

Document Name	Author	Issued by	Revision Number	Issue Date	Page No
2021	David Kelly	Armour AS	1	21/10/2021	11

Item No: 8 **Sample No:** N/A

Location: Ground Floor - Lobby and Store 008



Material Description:	Floor Tiles and Adhesive - Vinyl Products	
Identification:	Previously Sampled - Asbestos Detected	
Approx. quantity:	6 m ²	
Accessibility	Difficult	<i>Assessment Score</i>
Product type:	Vinyl	1
Extent of Damage:	Slight / minor damage	1
Surface Treatment:	Non-friable	0
Asbestos type:	Chrysotile	1
Material Assessment Score:		3
Priority Assessment Score:		Negligible
Action:	Manage	
Comments:	Previously sampled ref: Armour GR004	

Document Name	Author	Issued by	Revision Number	Issue Date	Page No
2021	David Kelly	Armour AS	1	21/10/2021	12

Item No: 9

Sample No: N/A

Location: Ground Floor - Store G80 009



Material Description:	Floor Tiles and Adhesive - Vinyl Products	
Identification:	Previously Sampled - Asbestos Detected	
Approx. quantity:	40 m ²	
Accessibility	Difficult	<i>Assessment Score</i>
Product type:	Vinyl	1
Extent of Damage:	Moderate damage	2
Surface Treatment:	Non-friable	0
Asbestos type:	Chrysotile	1
Material Assessment Score:		4
Priority Assessment Score:		Negligible
Action:	Manage	
Comments:	Previously sampled ref: Armour GR006. Now under carpet	

Document Name	Author	Issued by	Revision Number	Issue Date	Page No
2021	David Kelly	Armour AS	1	21/10/2021	13

Item No: 10

Sample No: N/A

Location: Ground Floor - Store G80 - Cage 010



Material Description:	Floor Tiles and Adhesive - Vinyl Products	
Identification:	Previously Sampled - Asbestos Detected	
Approx. quantity:	12 m ²	
Accessibility	Difficult	<i>Assessment Score</i>
Product type:	Vinyl	1
Extent of Damage:	Moderate damage	2
Surface Treatment:	Non-friable	0
Asbestos type:	Chrysotile	1
Material Assessment Score:		4
Priority Assessment Score:		Negligible
Action:	Manage	
Comments:	Previously sampled ref: Armour GR006. Now under carpet	

Document Name	Author	Issued by	Revision Number	Issue Date	Page No
2021	David Kelly	Armour AS	1	21/10/2021	14

Item No: 11

Sample No: N/A

Location: Basement - Boiler Room 011



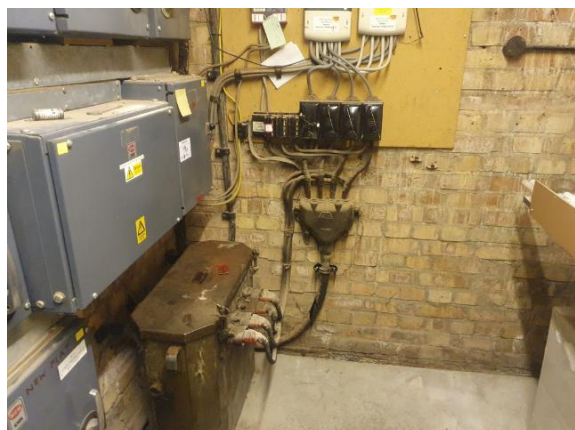
Material Description:	Gaskets - Gaskets (compressed)	
Identification:	Presumed to Contain Asbestos	
Approx. quantity:	2 m ²	
Accessibility	Difficult	<i>Assessment Score</i>
Product type:	Gaskets	2
Extent of Damage:	Moderate damage	2
Surface Treatment:	Gaskets	1
Asbestos type:	Chrysotile	1
Material Assessment Score:		6
Priority Assessment Score:		Low
Action:	Manage	
Comments:	No access within live boilers	

Document Name	Author	Issued by	Revision Number	Issue Date	Page No
2021	David Kelly	Armour AS	1	21/10/2021	15

Item No: 12

Sample No: N/A

Location: Basement - Boiler Room 012



Material Description:	Old Electrical Panels - Gaskets (rope/woven)	
Identification:	Presumed to Contain Asbestos	
Approx. quantity:	6 no	
Accessibility	Difficult	<i>Assessment Score</i>
Product type:	Flashguards	2
Extent of Damage:	Minor damage	1
Surface Treatment:	Woven	1
Asbestos type:	Chrysotile	1
Material Assessment Score:		5
Priority Assessment Score:		Low
Action:	Manage	
Comments:	No access within live electrics	

Document Name	Author	Issued by	Revision Number	Issue Date	Page No
2021	David Kelly	Armour AS	1	21/10/2021	16

Item No: 13

Sample No: N/A

Location: External - Main Building 013



Material Description:	Downpipes - Cement Product	
Identification:	Strongly Presumed to Contain Asbestos	
Approx. quantity:	6 LM	
Accessibility	Medium	<i>Assessment Score</i>
Product type:	Cement	1
Extent of Damage:	Slight / minor damage	1
Surface Treatment:	Unsealed Cement	1
Asbestos type:	Chrysotile	1
Material Assessment Score:		4
Priority Assessment Score:		Negligible
Action:	Manage	
Comments:	N/A	

Document Name	Author	Issued by	Revision Number	Issue Date	Page No
2021	David Kelly	Armour AS	1	21/10/2021	17

Item No: 14

Sample No: N/A

Location: External - Main Building 014



Material Description:	Downpipes - Cement Product	
Identification:	Strongly Presumed to Contain Asbestos	
Approx. quantity:	3 no	
Accessibility	Medium	<i>Assessment Score</i>
Product type:	Cement	1
Extent of Damage:	Slight / minor damage	1
Surface Treatment:	Unsealed Cement	1
Asbestos type:	Chrysotile	1
Material Assessment Score:		4
Priority Assessment Score:		Negligible
Action:	Manage	
Comments:	3no pipes	

Document Name	Author	Issued by	Revision Number	Issue Date	Page No
2021	David Kelly	Armour AS	1	21/10/2021	18

Item No: 15

Sample No: N/A

Location: External - Main Building 015



Material Description:	Soil Pipe - Cement Product	
Identification:	Strongly Presumed to Contain Asbestos	
Approx. quantity:	1 LM	
Accessibility	Difficult	<i>Assessment Score</i>
Product type:	Cement	1
Extent of Damage:	Slight / minor damage	1
Surface Treatment:	Unsealed Cement	1
Asbestos type:	Chrysotile	1
Material Assessment Score:		4
Priority Assessment Score:		Negligible
Action:	Manage	
Comments:	N/A	

Document Name	Author	Issued by	Revision Number	Issue Date	Page No
2021	David Kelly	Armour AS	1	21/10/2021	19

Item No: 16

Sample No: N/A

Location: External - Main Building 016



Material Description:	Rainwater Hoppers and Packers within- Cement Product	
Identification:	Strongly Presumed to Contain Asbestos	
Approx. quantity:	9 no	
Accessibility	Difficult	<i>Assessment Score</i>
Product type:	Cement	1
Extent of Damage:	Slight / minor damage	1
Surface Treatment:	Unsealed Cement	1
Asbestos type:	Chrysotile	1
Material Assessment Score:		4
Priority Assessment Score:		Negligible
Action:	Manage	
Comments:	N/A	

Document Name	Author	Issued by	Revision Number	Issue Date	Page No
2021	David Kelly	Armour AS	1	21/10/2021	20

Item No: 17

Sample No: N/A

Location: External - QM Stores 017



Material Description:	Downpipe, Hoppers and Packers within - Cement Product	
Identification:	Strongly Presumed to Contain Asbestos	
Approx. quantity:	4 LM	
Accessibility	Difficult	<i>Assessment Score</i>
Product type:	Cement	1
Extent of Damage:	Slight / minor damage	1
Surface Treatment:	Unsealed Cement	1
Asbestos type:	Chrysotile	1
Material Assessment Score:		4
Priority Assessment Score:		Negligible
Action:	Manage	
Comments:	N/A	

Document Name	Author	Issued by	Revision Number	Issue Date	Page No
2021	David Kelly	Armour AS	1	21/10/2021	21

Item No: 18

Sample No: N/A

Location: External - Stores 018



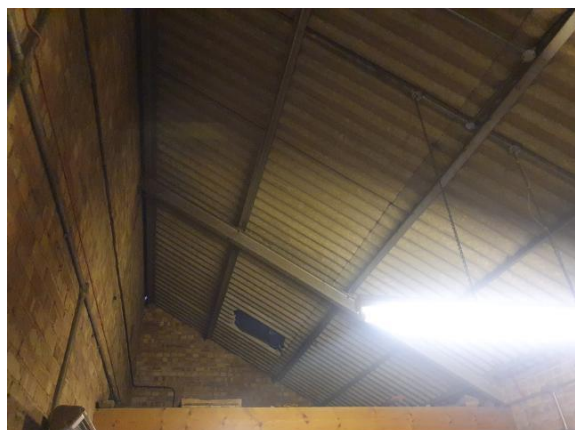
Material Description:	Profiled Cement Roof - Cement Product	
Identification:	Strongly Presumed to Contain Asbestos	
Approx. quantity:	20 m ²	
Accessibility	Difficult	<i>Assessment Score</i>
Product type:	Cement	1
Extent of Damage:	Slight / minor damage	1
Surface Treatment:	Unsealed Cement	1
Asbestos type:	Chrysotile	1
Material Assessment Score:		4
Priority Assessment Score:		Negligible
Action:	Manage	
Comments:	Only partially cement. The rest of roof is metal	

Document Name	Author	Issued by	Revision Number	Issue Date	Page No
2021	David Kelly	Armour AS	1	21/10/2021	22

Item No: 19

Sample No: N/A

Location: Ground Floor - Range 019



Material Description:	Profiled Cement Roof - Cement Product	
Identification:	Strongly Presumed to Contain Asbestos	
Approx. quantity:	75 m ²	
Accessibility	Difficult	<i>Assessment Score</i>
Product type:	Cement	1
Extent of Damage:	Moderate damage	2
Surface Treatment:	Unsealed Cement	1
Asbestos type:	Chrysotile	1
Material Assessment Score:		5
Priority Assessment Score:		Low
Action:	Encapsulate	
Comments:	Large hole in roof and other small areas of damage	

Document Name	Author	Issued by	Revision Number	Issue Date	Page No
2021	David Kelly	Armour AS	1	21/10/2021	23

Item No: 21

Sample No: N/A

Location: Ground Floor - Gas Intake Room 021



Material Description:	Gaskets - Gaskets (compressed)	
Identification:	Strongly Presumed to Contain Asbestos	
Approx. quantity:	5 no	
Accessibility	Difficult	<i>Assessment Score</i>
Product type:	Gaskets	2
Extent of Damage:	Slight / minor damage	1
Surface Treatment:	Gaskets	1
Asbestos type:	Chrysotile	1
Material Assessment Score:		5
Priority Assessment Score:		Low
Action:	Manage	
Comments:	N/A	

Document Name	Author	Issued by	Revision Number	Issue Date	Page No
2021	David Kelly	Armour AS	1	21/10/2021	24

Item No: 22 **Sample No:** N/A

Location: Ground Floor – Salt Store 022



Material Description:	Cement Lining to Vents – Cement Product	
Identification:	Strongly Presumed to Contain Asbestos	
Approx. quantity:	3 no	
Accessibility	Difficult	<i>Assessment Score</i>
Product type:	Cement	1
Extent of Damage:	Slight / minor damage	1
Surface Treatment:	Unsealed Cement	1
Asbestos type:	Chrysotile	1
Material Assessment Score:		4
Priority Assessment Score:		Negligible
Action:	Manage	
Comments:	N/A	

Document Name	Author	Issued by	Revision Number	Issue Date	Page No
2021	David Kelly	Armour AS	1	21/10/2021	25

Item No: 23

Sample No: N/A

Location: Ground Floor - Model Ward 023



Material Description:	Panels on Ceiling - Insulating Board	
Identification:	Previously Sampled - Asbestos Detected	
Approx. quantity:	4 m ²	
Accessibility	Easy	<i>Assessment Score</i>
Product type:	Asbestos Insulating Board	2
Extent of Damage:	Slight / minor damage	1
Surface Treatment:	Encapsulated AIB	1
Asbestos type:	Amosite	2
Material Assessment Score:		6
Priority Assessment Score:		Low
Action:	Encapsulate/Remove	
Comments:	Previously sampled ref: Fineline Environmental sample GU/TA/017/26. Consider boxing in or removing due to proximity to beds but panels are currently in good condition. 8no panels	

Document Name	Author	Issued by	Revision Number	Issue Date	Page No
2021	David Kelly	Armour AS	1	21/10/2021	26

Item No: 25

Sample No: N/A

Location: Ground Floor - Boiler Room G01 025



Material Description:	Boilers - No Access Gained	
Identification:	Presumed to Contain Asbestos	
Approx. quantity:	5 no	
Accessibility	Difficult	<i>Assessment Score</i>
Product type:	Asbestos Insulating Board	2
Extent of Damage:	Slight / minor damage	1
Surface Treatment:	Enclosed Insulation	1
Asbestos type:	Amosite, Chrysotile	2
Material Assessment Score:		6
Priority Assessment Score:		Low
Action:	Manage	
Comments:	No access within live Hamworthy Boilers. Including boilers in lower ground floor boiler room	

Document Name	Author	Issued by	Revision Number	Issue Date	Page No
2021	David Kelly	Armour AS	1	21/10/2021	27

Section 5: Negative Items

Item No:	1	Sample No:	DK/03
Location:	First Floor - Caretakers Flat 001		



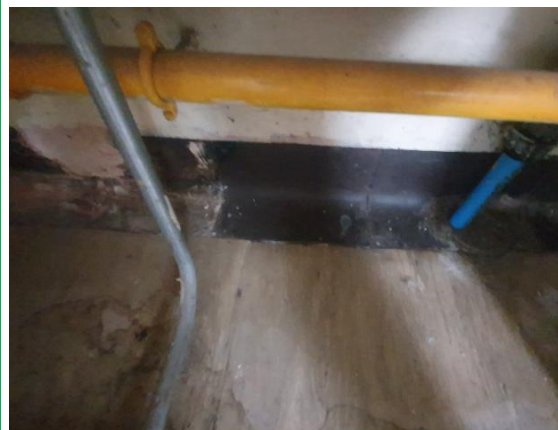
Material Description:	Sink Pad – Bitumen	
Identification:	Sampled - No Asbestos Found	
Approx. quantity:	N/A	
Accessibility	N/A	Assessment Score
Product type:	N/A	N/A
Extent of Damage:	N/A	N/A
Surface Treatment:	N/A	N/A
Asbestos type:	N/A	N/A
Material Assessment Score:		N/A
Priority Assessment Score:		N/A
Action:	N/A	
Comments:	Previously a no access area, now accessed. No asbestos found.	

Document Name	Author	Issued by	Revision Number	Issue Date	Page No
2021	David Kelly	Armour AS	1	21/10/2021	28

Item No: 2

Sample No: DK/01

Location: Ground Floor - Boiler Room G01 002



Material Description:	Skirting Board Tiles and Adhesive - Vinyl Products	
Identification:	Sampled - No Asbestos Found	
Approx. quantity:	N/A	
Accessibility	N/A	Assessment Score
Product type:	N/A	N/A
Extent of Damage:	N/A	N/A
Surface Treatment:	N/A	N/A
Asbestos type:	N/A	N/A
Material Assessment Score:		N/A
Priority Assessment Score:		N/A
Action:	N/A	
Comments:	Partially to perimeter of room	

Document Name	Author	Issued by	Revision Number	Issue Date	Page No
2021	David Kelly	Armour AS	1	21/10/2021	29

Item No: 20

Sample No: DK/05

Location: Ground Floor - ACF Cadet Hut - Store 020



Material Description:	Insulation board panels behind heaters	
Identification:	Sampled - No Asbestos Found	
Approx. quantity:	N/A	
Accessibility	N/A	Assessment Score
Product type:	N/A	N/A
Extent of Damage:	N/A	N/A
Surface Treatment:	N/A	N/A
Asbestos type:	N/A	N/A
Material Assessment Score:		N/A
Priority Assessment Score:		N/A
Action:	N/A	
Comments:	Previously a no access area, now accessed. No asbestos found.	

Document Name	Author	Issued by	Revision Number	Issue Date	Page No
2021	David Kelly	Armour AS	1	21/10/2021	30

Item No: 24

Sample No: DK/02

Location: Ground Floor - Boiler Room G01 024



Material Description:	Gaskets - Gaskets (compressed)	
Identification:	Sampled - No Asbestos Found	
Approx. quantity:	N/A	
Accessibility	N/A	<i>Assessment Score</i>
Product type:	N/A	N/A
Extent of Damage:	N/A	N/A
Surface Treatment:	N/A	N/A
Asbestos type:	N/A	N/A
Material Assessment Score:		N/A
Priority Assessment Score:		N/A
Action:	N/A	
Comments:	N/A	

Document Name	Author	Issued by	Revision Number	Issue Date	Page No
2021	David Kelly	Armour AS	1	21/10/2021	31

Item No: 26

Sample No: DK/04

Location: First Floor Caretakers Flat – Kitchen Cupboard 026



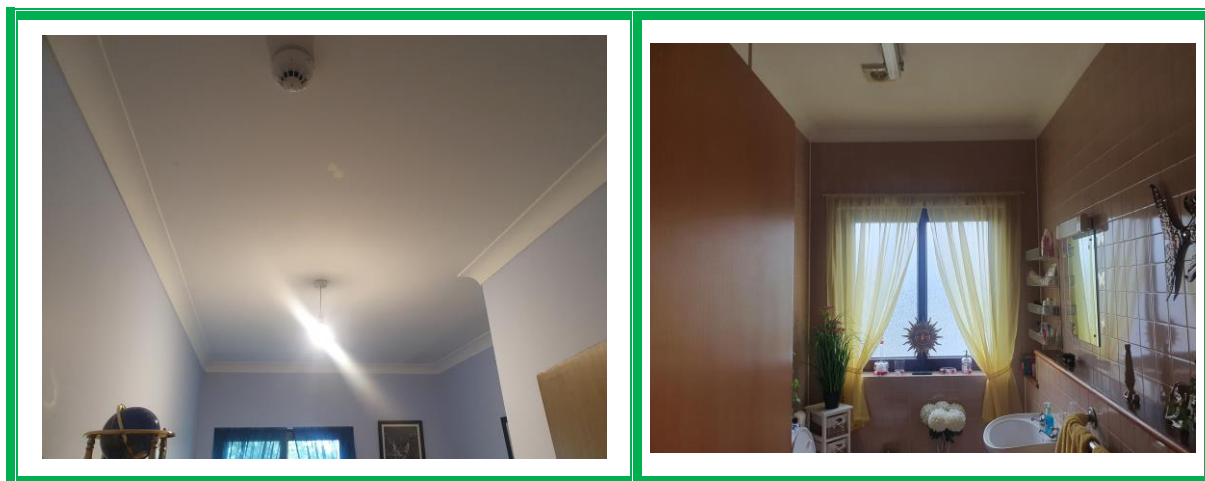
Material Description:	Insulation Board	
Identification:	Sampled - No Asbestos Found	
Approx. quantity:	N/A	
Accessibility	N/A	Assessment Score
Product type:	N/A	N/A
Extent of Damage:	N/A	N/A
Surface Treatment:	N/A	N/A
Asbestos type:	N/A	N/A
Material Assessment Score:		N/A
Priority Assessment Score:		N/A
Action:	N/A	
Comments:	Previously a no access area, now access. No asbestos found.	

Document Name	Author	Issued by	Revision Number	Issue Date	Page No
2021	David Kelly	Armour AS	1	21/10/2021	32

Item No: 27

Sample No: N/A

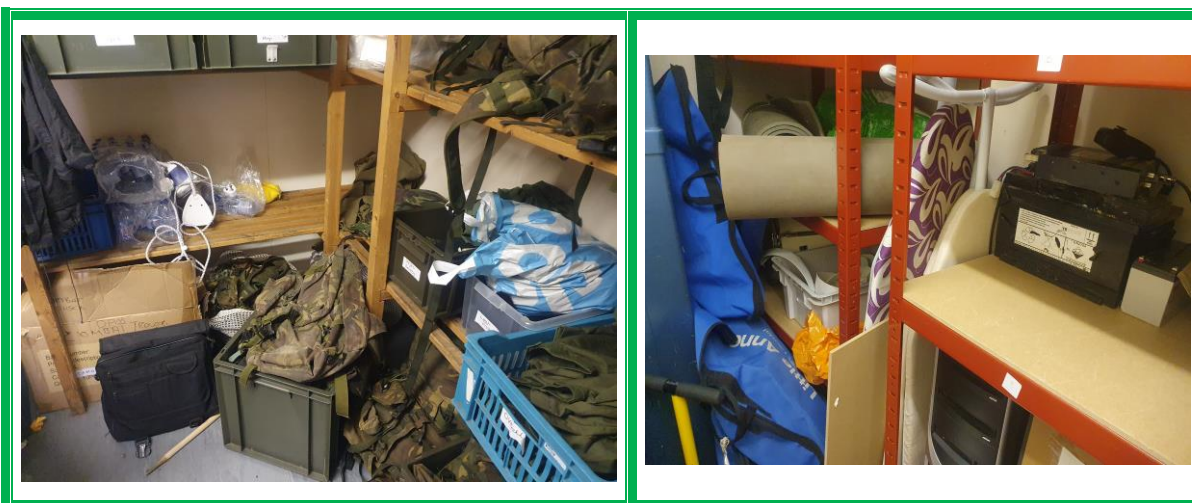
Location: First Floor Caretakers Flat – Bedroom x 3, Living Room, Bathroom and Hallway 027



Material Description:	No asbestos suspected	
Identification:	No asbestos suspected	
Approx. quantity:	N/A	
Accessibility	N/A	<i>Assessment Score</i>
Product type:	N/A	N/A
Extent of Damage:	N/A	N/A
Surface Treatment:	N/A	N/A
Asbestos type:	N/A	N/A
Material Assessment Score:		N/A
Priority Assessment Score:		N/A
Action:	N/A	
Comments:	Previously a no access area, now access. No asbestos found.	

Document Name	Author	Issued by	Revision Number	Issue Date	Page No
2021	David Kelly	Armour AS	1	21/10/2021	33

Item No:	28	Sample No:	N/A
Location:	ACF Store, Corridor, Armoury, W.C's x 3 and Kitchen 028		



Material Description:	No asbestos suspected	
Identification:	No asbestos suspected	
Approx. quantity:	N/A	
Accessibility	N/A	<i>Assessment Score</i>
Product type:	N/A	N/A
Extent of Damage:	N/A	N/A
Surface Treatment:	N/A	N/A
Asbestos type:	N/A	N/A
Material Assessment Score:		N/A
Priority Assessment Score:		N/A
Action:	N/A	
Comments:	Previously a no access area, now access. No asbestos found.	

Document Name	Author	Issued by	Revision Number	Issue Date	Page No
2021	David Kelly	Armour AS	1	21/10/2021	34



Section 6: Survey Objectives

Instructions were received from Kelvin Walker of Wessex RFCA to carry out a Re-Inspection asbestos survey at 243 Field Hospital, Ashmead Road, Somerset, BS31 1SX in accordance with HSG264 and Armour Analytical's quality procedures.

The survey was carried out on 16 February 2021 by David Kelly with the objective of facilitating a Re-Inspection report.

A survey, with the objective of accessing previously no accessed area was carried out on 15th October 2021 by David Kelly.

Document Name	Author	Issued by	Revision Number	Issue Date	Page No
2021	David Kelly	Armour AS	1	21/10/2021	35



Section 7: Survey Notes

This report has been written with reference to the various Guidance Notes etc, issued, and current at the date of this report and describes circumstances at the site on the date the investigation took place.

Where similar items exist in the building, only one or two samples may have been taken to ascertain the material content. It was assumed that similar products were of the same material.

Any person undertaking work within the buildings should be told of the presence of asbestos. This briefing also applies to any other person associated with the site, including staff, sub-contractors and others.

The drawings in the report are not to scale and are illustrative only to indicate approximate locations. The descriptions used are for location identification purposes.

All the recommendations described in this report are based upon assumptions made after consideration of the type of material, condition of the material, its location, analysis result and type of use the area is thought to be subjected to. However, statutory authorities or others could require amendments based on local knowledge, change in legislation, change in use or indeed other conditions or criteria.

Samples taken from floor tiles (or similar material) may include a bitumen adhesive as part of the sample. It is known that some proprietary brands of bitumen have an asbestos content and this will be included as an integral part of the bulk sample unless otherwise stated.

Due to the artex being non-homogenous, it is recommended to treat all areas as containing asbestos if you have a positive sample of artex.

Document Name	Author	Issued by	Revision Number	Issue Date	Page No
2021	David Kelly	Armour AS	1	21/10/2021	36

Section 8: Material Assessment Algorithm

Variable	Score	Examples
Product type	1	Vinyl, 'Bakelite', Cement, Textured Coating, Non-Friable Debris, Floor Tiles, Bitumen, Reinforced Plastics, Mastic (putty), Windowsills
	2	Asbestos Insulating Board, Paper, Rope, Burned Cement Debris, Flashguards, Gaskets
	3	Pipe Insulation, Spray Coating, Friable Debris, Loose Fill Asbestos
Condition / Damage	0	Good
	1	Slight / Minor Damage
	2	Moderate Damage – Breakage to Surface Treatment
	3	Major Damage – Smashed or Exposed Material
Surface Treatment	0	Non-Friable E.G. Vinyl
	1	Enclosed Insulation, Encapsulated AIB, Unsealed Cement, Woven Material, Paper
	2	Unsealed AIB, Encapsulated Insulation, Encapsulated Pipe Lagging
	3	Unsealed Insulation, Spray Coating, Unsealed Pipe Lagging
Asbestos Type	1	Chrysotile
	2	Amosite and Other Amphiboles
	3	Crocidolite

The scores from each of the four sections are added together to produce a risk score:

Risk score	Risk assessment
10 or more	High risk
7 – 9	Medium risk
5 – 6	Low risk
4 and below	Negligible risk

Section 9: Certificates of Bulk Analysis



Our Ref: J203337 Rev. 2 Fl: 5
Your Ref: 3700
Date: 20/10/2021

ENVIROCHEM
Analytical Laboratories Ltd.
12 The Gardens
Broadcut, Fareham
Hampshire
PO16 8SS



1227
Tel: (01329) 287777
Fax: (01329) 287755
www.envirochem.co.uk
office@envirochem.co.uk

Asbestos Fibre Identification Report

Client: Armour Analytical Services Ltd
Admirals Yard, Station Road, Patchway, Bristol, BS34 6LR
Site Address: 243 Field Hospital, Ashmere Road, Keynsham, BS31 1SX
Sampled By: Armour Analytical Services Ltd
Date sampled/received: 18th February 2021
Date analysed: 19th February 2021 - 20th October 2021
Analyst/s: Chloe Bowman, Raphael Mirzaian
Analysis Location: 12 The Gardens, Broadcut, Fareham, Hampshire, PO16 8SS

ANALYTICAL PROCEDURE

Fibre identification was carried out in accordance with the documented 'in-house' method (2.01) based on the HSE Guidance Note HSG 248. These employed stereo microscopy, polarized microscopy and dispersion staining techniques.

RESULTS

Sample No.	Sample Ref.	Location	Asbestos Detected	Asbestos Type
DK/01	BS656835	Boiler Room – Skirting Board Tiles	No	
DK/02	BS656836	Boiler Room – Gaskets	No	
DK/03	BS711347	Caretakers flat. Kitchen. Sink pad.	No	
DK/04	BS711348	Caretakers flat. Kitchen cupboard. Boxing and ceiling.	No	

NOTES:

1. Sample(s) were examined for the presence of 6 types of asbestos fibres: crocidolite (blue), amosite (brown), chrysotile (white), anthophyllite, actinolite and tremolite.
2. The results shown in this test report specifically refer to the sample(s) tested as received unless otherwise stated and samples collected by the client are evaluated using information provided by the client. For samples collected by the client the date of receipt is deemed to be the same as the date sampled.
3. Envirochem is a UKAS accredited laboratory for sampling and identification of asbestos containing materials.
4. Comments, observations and opinions are outside the scope of UKAS accreditation.
5. The analytical method in the HSG248 does not quantify the amount of asbestos present, therefore UKAS accreditation does not permit quantification.
6. If, during fibre identification, only 1 or 2 fibres are seen and identified as asbestos, then the term 'trace asbestos identified' is used.
7. This report shall not be reproduced except in full, without written approval of Envirochem.

SIGNATURE:



Authorised signatory

PRINT NAME: Chloe Bowman

Reg. No. 2378228 England. Registered Office: Envirochem, 12 The Gardens, Broadcut, Fareham, Hampshire, PO16 8SS.

Page 1 of 2

Document Name	Author	Issued by	Revision Number	Issue Date	Page No
2021	David Kelly	Armour AS	1	21/10/2021	38



Our Ref: J203337 Rev. 2 Fl: 5
Your Ref: 3700
Date: 20/10/2021

ENVIROCHEM
Analytical Laboratories Ltd.
12 The Gardens
Broadcut, Fareham
Hampshire
PO16 8SS



1227
Tel: (01329) 287777
Fax: (01329) 287755
www.envirochem.co.uk
office@envirochem.co.uk

Asbestos Fibre Identification Report

Client: Armour Analytical Services Ltd
Admirals Yard, Station Road, Patchway, Bristol, BS34 6LR
Site Address: 243 Field Hospital, Ashmere Road, Keynsham, BS31 1SX
Sampled By: Armour Analytical Services Ltd
Date sampled/received: 18th February 2021
Date analysed: 19th February 2021 - 20th October 2021
Analyst/s: Chloe Bowman, Raphael Mirzaian
Analysis Location: 12 The Gardens, Broadcut, Fareham, Hampshire, PO16 8SS

ANALYTICAL PROCEDURE

Fibre identification was carried out in accordance with the documented 'in-house' method (2.01) based on the HSE Guidance Note HSG 248. These employed stereo microscopy, polarized microscopy and dispersion staining techniques.

RESULTS

Sample No.	Sample Ref.	Location	Asbestos Detected	Asbestos Type
DK/05	BS711349	ATC hut. ATC / ACF Offices & classrooms. Panels behind heater.	No	

NOTES:

1. Sample(s) were examined for the presence of 6 types of asbestos fibres: crocidolite (blue), amosite (brown), chrysotile (white), anthophyllite, actinolite and tremolite.
2. The results shown in this test report specifically refer to the sample(s) tested as received unless otherwise stated and samples collected by the client are evaluated using information provided by the client. For samples collected by the client the date of receipt is deemed to be the same as the date sampled.
3. Envirochem is a UKAS accredited laboratory for sampling and identification of asbestos containing materials.
4. Comments, observations and opinions are outside the scope of UKAS accreditation.
5. The analytical method in the HSG248 does not quantify the amount of asbestos present, therefore UKAS accreditation does not permit quantification.
6. If, during fibre identification, only 1 or 2 fibres are seen and identified as asbestos, then the term 'trace asbestos identified' is used.
7. This report shall not be reproduced except in full, without written approval of Envirochem.

SIGNATURE: 

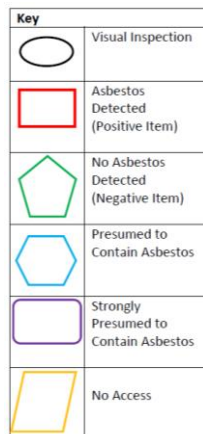
Authorised signatory

PRINT NAME: Chloe Bowman

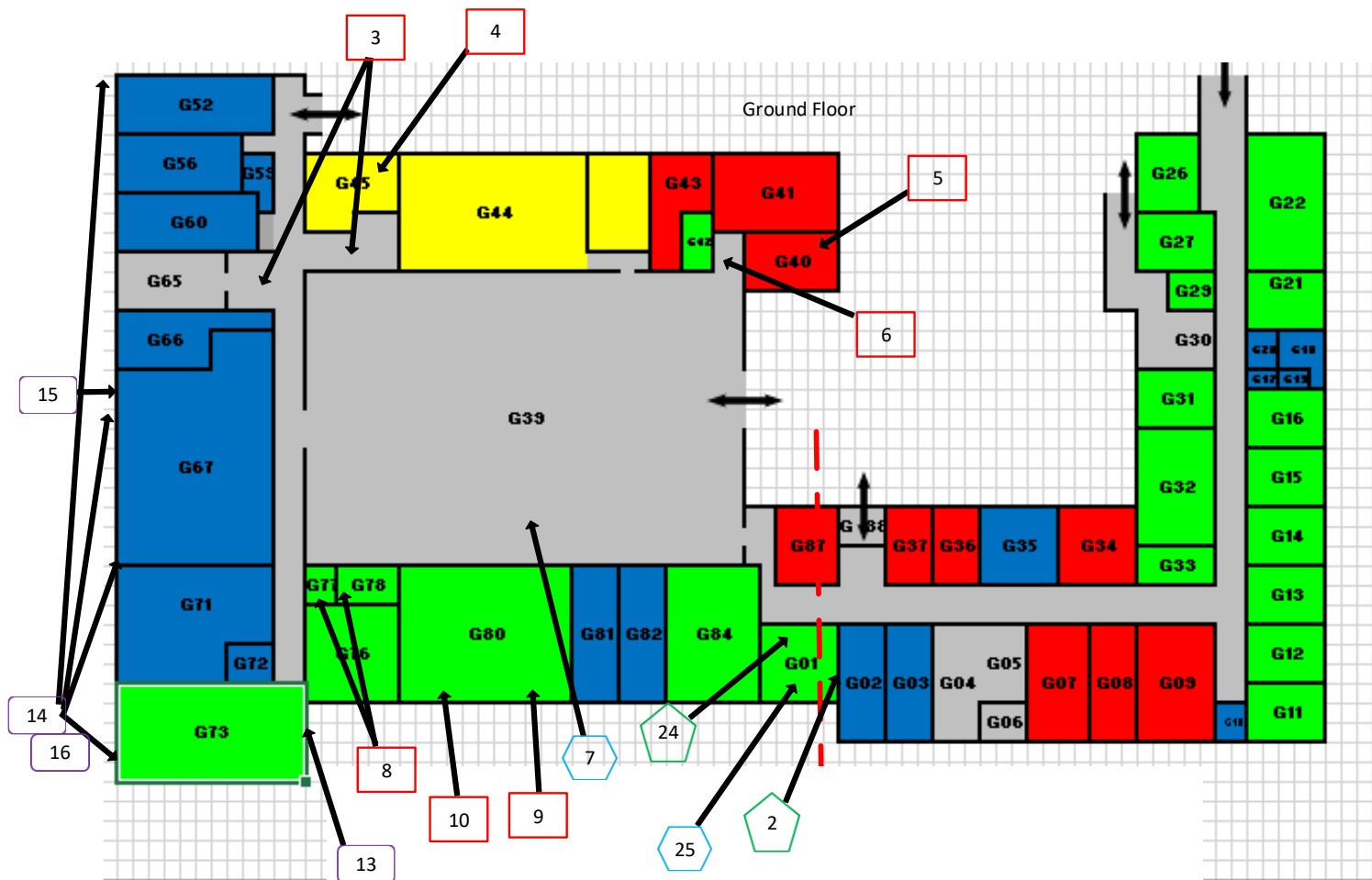
Reg. No. 2378228 England. Registered Office: Envirochem, 12 The Gardens, Broadcut, Fareham, Hampshire, PO16 8SS.







Page 2 of 2

Document Name	Author	Issued by	Revision Number	Issue Date	Page No
2021	David Kelly	Armour AS	1	21/10/2021	39

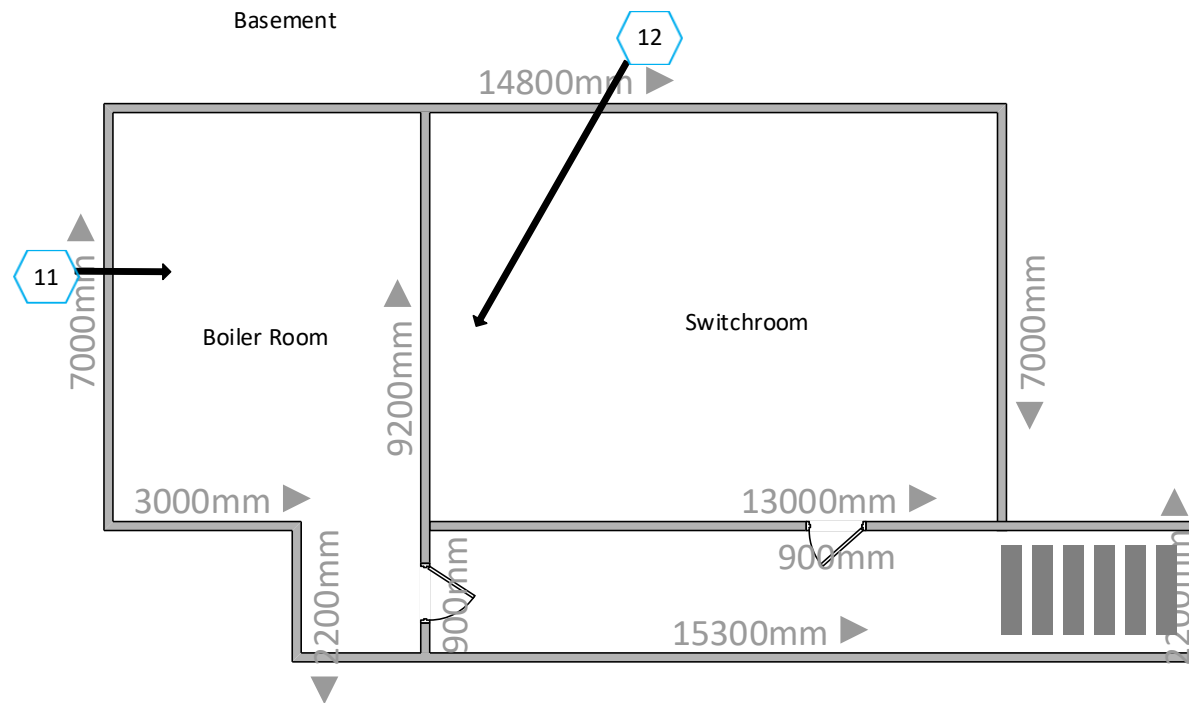








Document Name	Author	Issued by	Revision Number	Issue Date	Page No
2021	David Kelly	Armour AS	1	21/02/2021	40



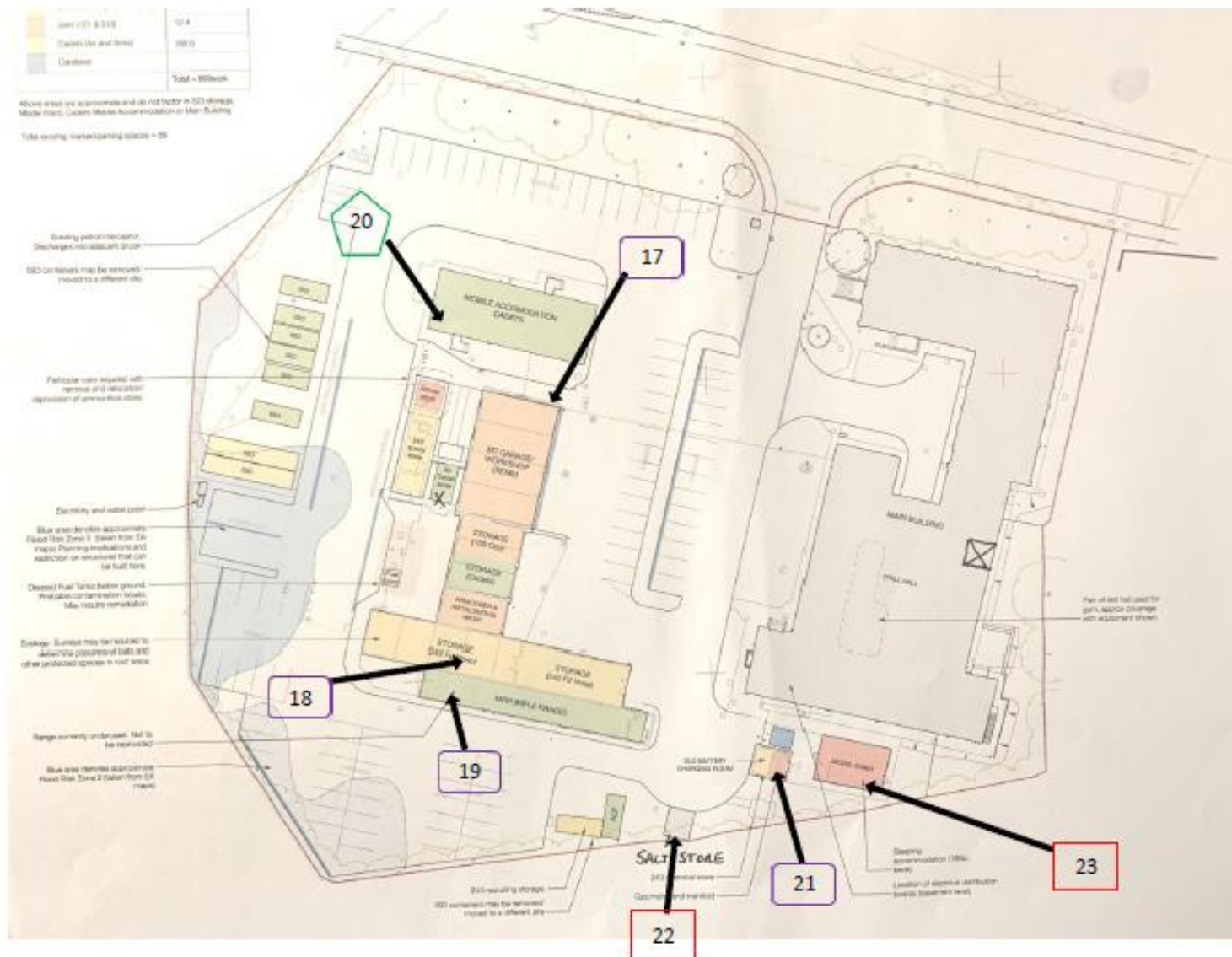
Key	
	Visual Inspection
	Asbestos Detected (Positive Item)
	No Asbestos Detected (Negative Item)
	Presumed to Contain Asbestos
	Strongly Presumed to Contain Asbestos
	No Access







Document Name	Author	Issued by	Revision Number	Issue Date	Page No
2021	David Kelly	Armour AS	1	21/02/2021	41



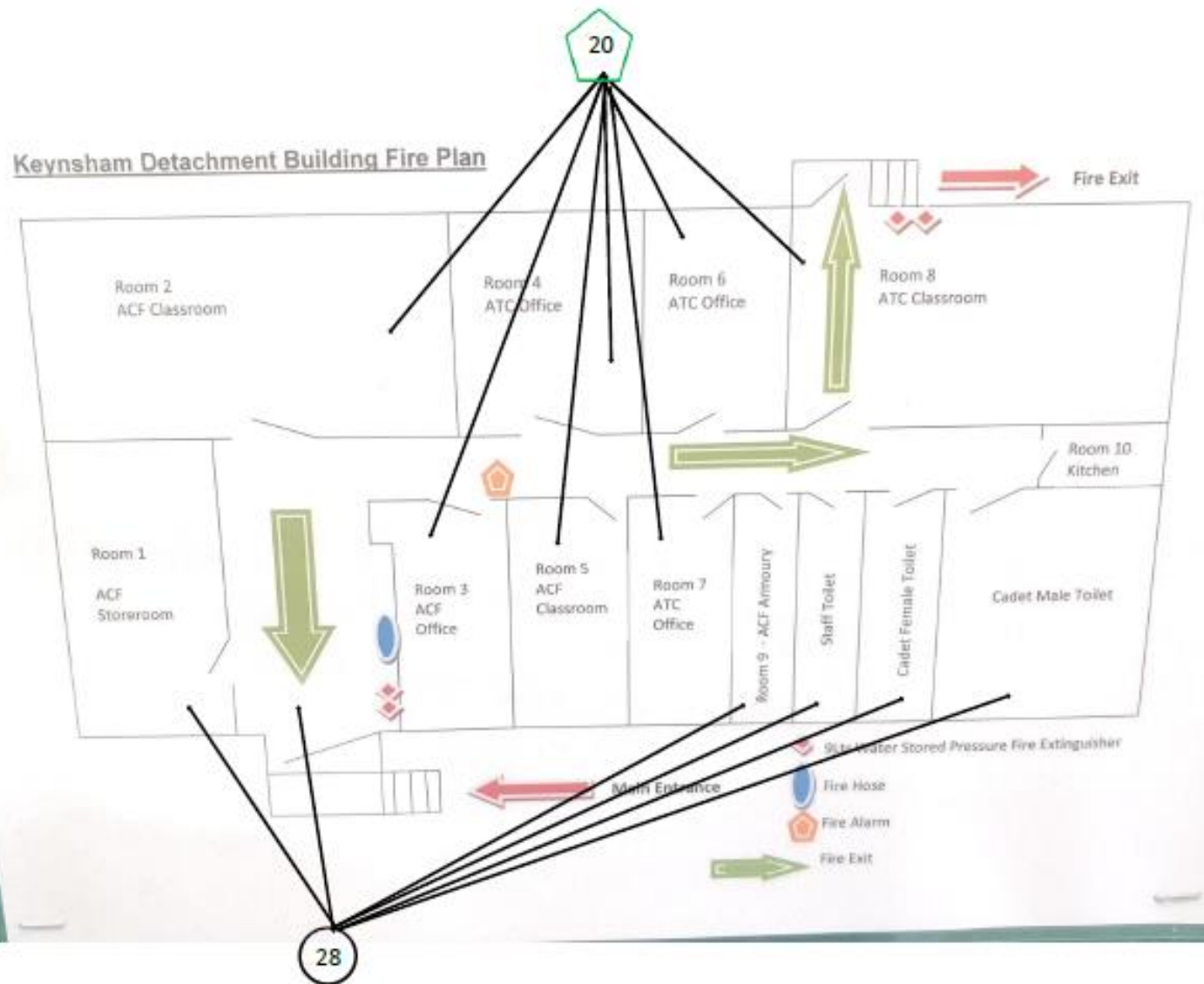
Key	
	Visual Inspection
	Asbestos Detected (Positive Item)
	No Asbestos Detected (Negative Item)
	Presumed to Contain Asbestos
	Strongly Presumed to Contain Asbestos
	No Access







Document Name	Author	Issued by	Revision Number	Issue Date	Page No
2021	David Kelly	Armour AS	1	21/02/2021	42



Key	
	Visual Inspection
	Asbestos Detected (Positive Item)
	No Asbestos Detected (Negative Item)
	Presumed to Contain Asbestos
	Strongly Presumed to Contain Asbestos
	No Access

Document Name	Author	Issued by	Revision Number	Issue Date	Page No
2021	David Kelly	Armour AS	1	21/02/2021	43



Key	
	Visual Inspection
	Asbestos Detected (Positive Item)
	No Asbestos Detected (Negative Item)
	Presumed to Contain Asbestos
	Strongly Presumed to Contain Asbestos
	No Access

Document Name	Author	Issued by	Revision Number	Issue Date	Page No
2021	David Kelly	Armour AS	1	21/02/2021	44



I the surveyor can confirm that this report is accurate to my findings onsite and this survey has been Content checked by myself.

Checked by: Will Fyles

Date: 21/10/2021

I the Admin Manager can confirm that this report is accurate to the paperwork received and this survey has been quality checked by myself.

Checked by: Andrea Bansee

Date: 27/10/2021

Report Compiled By

Armour Analytical Services Ltd, Admirals Yard, Station Road, Bristol, BS34 6LR

Document Name	Author	Issued by	Revision Number	Issue Date	Page No
2021	David Kelly	Armour AS	1	21/02/2021	45