

Project Number A-00524 (5435)

**Re-Inspection
Asbestos Survey Report - Revised**

**6th Battalion the Rifles
C Company (Poole Detachment)
Dorset
BH12 5AD**



Working in Partnership with Shield Services Group



Document Name	Author	Issued by	Revision Number	Issue Date	Page No
2021	David Kelly	Armour AS	1	24/10/2021	1

Contents

Section	
1	Contact Details
2	Executive Summary
3	Site Description & Survey Information
4	Positive, Presumed or No Access Items
5	Negative Photos Sheets
6	Survey Objectives
7	Survey Notes
8	Material Assessment Algorithm
9	Certificates of Bulk Analysis
10	Site Plan

Document Name	Author	Issued by	Revision Number	Issue Date	Page No
2021	David Kelly	Armour AS	1	24/10/2021	2



Section 1: Contact Details

Client Details:		Instructing Party:	
Wessex RFCA Mount House Mount Street Taunton TA1 3QE		Wessex RFCA Mount House Mount Street Taunton TA1 3QE	
Contact Name:	Kelvin Walker	Contact Name:	Kelvin Walker
Tel: 01823 250 116	Fax: N/A	Tel: 01823 250 116	Fax: N/A

Site Address:		Report Author:	
6th Battalion the Rifles C Company (Poole Detachment) Dorset BH12 5AD		Armour Analytical Services Admirals Yard Station Road Bristol BS34 6LR	
Contact Name:	Kelvin Walker	Contact Name:	Andrea Bansee
Tel: 01823 250 116	Fax: N/A	Mobile: 07468 535 836	

Lead Surveyor's Name:	Lead Surveyor's Authorising Signature:
David Kelly	

Document Name	Author	Issued by	Revision Number	Issue Date	Page No
2021	David Kelly	Armour AS	1	24/10/2021	3

Section 2: Executive Summary

Sample Number	Sample Type	Location	Analysis
DK/19	Profiled Roof - Cement Product	Garage 036	Chrysotile
DK/20	Ceiling Panels	GF Lobby 037	Chrysotile
DK/21	Ceiling Panels	GF Electrical Cupboard 038	Chrysotile
DK/22	Textured Coating Ceiling	Living Room and Dining Room 039	N.A.D.I.S

A.D Asbestos Detected

N.A.D.I.S No Asbestos Detected in Sample

The following items have been either been "Strongly Presumed" To Contain Asbestos or "Presumed" to Contain Asbestos as they were either visually identified in being so, labelled after previously being sampled on prior surveys or not accessible at the time of the survey:

Status	Sample Type	Location
Previously Sampled	Floor Tiles and Adhesive - Vinyl Products	Ground Floor Main Building - Offices 0.02 and 0.03 001
Presumed	Safe Casings - Insulating Board	Ground Floor Main Building- Office 0.02 002
Previously Sampled	Floor Tiles and Adhesive - Vinyl Products	Ground Floor Main Building - Lobby 0.06 003
Previously Sampled	Floor Tiles and Adhesive - Vinyl Products	Ground Floor Main Building - Classroom 0.08 004
Presumed	Safe Casings - Insulating Board	Ground Floor Main Building- Classroom 0.08 005
Presumed	Rope Seals to Skylights - Gaskets (rope/woven)	Ground Floor Main Building - Drill Hall 006
Presumed	Electrical Panels - Gaskets (compressed)	Ground Floor Main Building - Electrical Cupboard 0.05 007
Previously Sampled	Floor Tiles and Adhesive - Vinyl Products	Ground Floor Main Building - Ladies WC Lobby 0.13 008
Previously Sampled	Floor Tiles and Adhesive - Vinyl Products	Ground Floor Main Building - Lobby 0.12 009
Previously Sampled	Floor Tiles and Adhesive - Vinyl Products	Ground Floor Main Building - Mess Room 0.20 and 0.21 010
Previously Sampled	Floor Tiles and Adhesive - Vinyl Products	Ground Floor Main Building - Stores 0.33 013

Document Name	Author	Issued by	Revision Number	Issue Date	Page No
2021	David Kelly	Armour AS	1	24/10/2021	4

Status	Sample Type	Location
Previously Sampled	Floor Tiles and Adhesive - Vinyl Products	Ground Floor Main Building - Store 0.36 014
Previously Sampled	Sink pad - Bituminous Product	Ground Floor Main Building - Store 0.36 015
Strongly Presumed	Toilet Seats - PVC / Reinforced Plastics	Ground Floor Building 4 - WC and Store 035
Presumed	Pipe Running through Ceiling - Cement Product	First Floor Main Building - Store 1.15 017
Previously Sampled	Floor Tiles and Adhesive - Vinyl Products	First Floor Main Building - Offices 1.24,1.21,1.22 and Corridor 1.20 018
Previously Sampled	Floor Tiles and Adhesive - Vinyl Products	First Floor Main Building - Rooms 1.18 and 1.19 019
Previously Sampled	Floor Tiles and Adhesive - Vinyl Products	First Floor Main Building - Corridor 021
Previously Sampled	Floor Tiles and Adhesive - Vinyl Products	First Floor Main Building - Stores 1.28,1.31 and 1.34 022
Previously Sampled	Floor Tiles and Adhesive - Vinyl Products	First Floor Main Building - Classrooms 1.29, 1.30 and Cupboard 1.32 023
Previously Sampled	Floor Tiles and Adhesive - Vinyl Products	First Floor Main Building - Classroom 1.29 024
Previously Sampled	Floor Tiles and Adhesive - Vinyl Products	First Floor Main Building - WC 1.27 and Corridor 025
Strongly Presumed	Profiled Roof - Cement Product	Sixth Floor Building 7 027
Strongly Presumed	Cement Flue Pipes - Cement Product	External Main Building 026
Previously Sampled	Downpipes - Cement Product	External Building 7 028
Previously Sampled	Guttering - Cement Product	External Building 7 029
Strongly Presumed	Profiled Roof - Cement Product	External Building 4 030
Previously Sampled	Downpipes - Cement Product	External Building 4 031
Previously Sampled	Guttering - Cement Product	External Building 4 032
Strongly Presumed	Roof Edging - Cement Product	External Building 4 033
Previously Sampled	Damp Proof Course - Bituminous Product	External Building 4 034

The presence of asbestos in these areas cannot be ascertained at this time. If any works are to be carried out in these areas in the future, then these works should be approached cautiously.

Document Name	Author	Issued by	Revision Number	Issue Date	Page No
2021	David Kelly	Armour AS	1	24/10/2021	5



In accordance with current legislation, any suspect materials encountered in these areas are to be assumed to contain asbestos until proven otherwise. This will normally involve cessation of works in the affected area.

Document Name	Author	Issued by	Revision Number	Issue Date	Page No
2021	David Kelly	Armour AS	1	24/10/2021	6

Section 3: Site Description & Survey Information

Brief description on the general building construction

Various Brick and concrete frame buildings of varying age.

Caveat for no access areas

All areas accessed.

EXTERNAL MATERIALS

Roof Type	Pitched
Roof Materials	Non asbestos tiles, Profiled cement
Soffits	Plastic
Fascia	Plastic, Timber
Walls	Brick, Metal
Verge Under cloaking	None
Guttering	Plastic, Metal, Cement
Downpipes	Plastic, Metal, Cement
Window/Door frames	UPVC, Aluminum
Other Materials	N/A

INTERNAL MATERIALS

Loft Insulation	Fiberglass
Roof Underlining	No asbestos felt
Ceilings	Plasterboard, Lath and Plaster, Concrete
Walls <i>Internal</i>	Plasterboard, Supalux, Brick, Timber
Floors	Tiles, Lino, Concrete, Carpet
Doors/Frames	Timber
Pipework/Insulation	MMMF, Armaflex
Boxings	Plasterboard, Timber
Boiler Make	Non asbestos boilers
Flue Pipes	Cement, Metal
Storage Heaters	No access within heaters
Electrical Boxes/Machinery	No access within electrics
Ducting/Risers	Metal
Stairs	Concrete
Lift Shafts	None
Other Materials	N/A

Document Name	Author	Issued by	Revision Number	Issue Date	Page No
2021	David Kelly	Armour AS	1	24/10/2021	7

Section 4: Positive, Presumed or No Access Items

Item No:	1	Sample No:	N/A
Location:	Ground Floor - Main Building - Offices 0.02 and 0.03 001		



Material Description:	Floor Tiles and Adhesive - Vinyl Products	
Identification:	Previously Sampled - Asbestos Detected	
Approx. quantity:	32 m ²	
Accessibility	Difficult	Assessment Score
Product type:	Vinyl	1
Extent of Damage:	Slight / minor damage	1
Surface Treatment:	Non-friable	0
Asbestos type:	Chrysotile	1
Material Assessment Score:		3
Priority Assessment Score:		Negligible
Action:	Manage	
Comments:	Previously sampled ref: Armour 4/12/19 Sample DK/2. Under carpet	

Document Name	Author	Issued by	Revision Number	Issue Date	Page No
2021	David Kelly	Armour AS	1	24/10/2021	8

Item No: 2

Sample No: N/A

Location: Ground Floor - Main Building- Office 0.02 002



Material Description:	Safe Casings - Insulating Board	
Identification:	Presumed to Contain Asbestos	
Approx. quantity:	1 no	
Accessibility	Difficult	<i>Assessment Score</i>
Product type:	Asbestos Insulating Board	2
Extent of Damage:	Minor damage	1
Surface Treatment:	Unsealed AIB	2
Asbestos type:	Amosite, Chrysotile	2
Material Assessment Score:		7
Priority Assessment Score:		Medium
Action:	Manage	
Comments:	No access within safe casings	

Document Name	Author	Issued by	Revision Number	Issue Date	Page No
2021	David Kelly	Armour AS	1	24/10/2021	9

Item No: 3

Sample No: N/A

Location: Ground Floor - Main Building - Lobby 0.06 003



Material Description:	Floor Tiles and Adhesive - Vinyl Products	
Identification:	Previously Sampled - Asbestos Detected	
Approx. quantity:	5 m ²	
Accessibility	Difficult	<i>Assessment Score</i>
Product type:	Vinyl	1
Extent of Damage:	Slight / minor damage	1
Surface Treatment:	Non-friable	0
Asbestos type:	Chrysotile	1
Material Assessment Score:		3
Priority Assessment Score:		Negligible
Action:	Manage	
Comments:	Previously sampled ref: Armour 4/12/19 Sample DK/2. Under carpet	

Document Name	Author	Issued by	Revision Number	Issue Date	Page No
2021	David Kelly	Armour AS	1	24/10/2021	10

Item No:	4	Sample No:	N/A
Location:	Ground Floor - Main Building - Classroom 0.08 004		



Material Description:	Floor Tiles and Adhesive - Vinyl Products	
Identification:	Previously Sampled - Asbestos Detected	
Approx. quantity:	25 m ²	
Accessibility	Difficult	<i>Assessment Score</i>
Product type:	Vinyl	1
Extent of Damage:	Slight / minor damage	1
Surface Treatment:	Non-friable	0
Asbestos type:	Chrysotile	1
Material Assessment Score:		3
Priority Assessment Score:		Negligible
Action:	Manage	
Comments:	Previously sampled ref: Armour 4/12/19 Sample DK/2. Under carpet	

Document Name	Author	Issued by	Revision Number	Issue Date	Page No
2021	David Kelly	Armour AS	1	24/10/2021	11

Item No: 5

Sample No: N/A

Location: Ground Floor - Main Building- Classroom 0.08 005

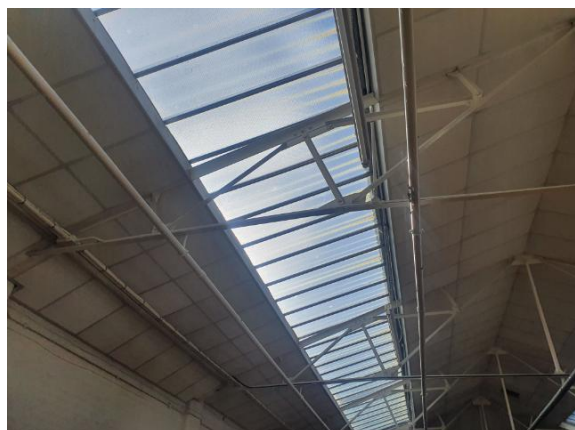


Material Description:	Safe Casings - Insulating Board	
Identification:	Presumed to Contain Asbestos	
Approx. quantity:	1 no	
Accessibility	Difficult	<i>Assessment Score</i>
Product type:	Asbestos Insulating Board	2
Extent of Damage:	Minor damage	1
Surface Treatment:	Unsealed AIB	2
Asbestos type:	Amosite, Chrysotile	2
Material Assessment Score:		7
Priority Assessment Score:		Low
Action:	Manage	
Comments:	No access within safe casings	

Document Name	Author	Issued by	Revision Number	Issue Date	Page No
2021	David Kelly	Armour AS	1	24/10/2021	12

Item No: 6 **Sample No:** N/A

Location: Ground Floor - Main Building - Drill Hall 006



Material Description:	Rope Seals to Skylights - Gaskets (rope/woven)	
Identification:	Presumed to Contain Asbestos	
Approx. quantity:	30 m ²	
Accessibility	Difficult	<i>Assessment Score</i>
Product type:	Rope	2
Extent of Damage:	Minor damage	1
Surface Treatment:	Woven	1
Asbestos type:	Chrysotile	1
Material Assessment Score:		5
Priority Assessment Score:		Low
Action:	Manage	
Comments:	No access to sample due to height restrictions	

Document Name	Author	Issued by	Revision Number	Issue Date	Page No
2021	David Kelly	Armour AS	1	24/10/2021	13

Item No:	7	Sample No:	N/A
Location:	Ground Floor - Main Building - Electrical Cupboard 0.05 007		



Material Description:	Electrical Panels - Gaskets (compressed)	
Identification:	Presumed to Contain Asbestos	
Approx. quantity:	2 no	
Accessibility	Difficult	Assessment Score
Product type:	Flashguards	2
Extent of Damage:	Minor damage	1
Surface Treatment:	Woven	1
Asbestos type:	Chrysotile	1
Material Assessment Score:		5
Priority Assessment Score:		Low
Action:	Manage	
Comments:	No access within live electrics	

Document Name	Author	Issued by	Revision Number	Issue Date	Page No
2021	David Kelly	Armour AS	1	24/10/2021	14

Item No:	8	Sample No:	N/A
Location:	Ground Floor - Main Building - Ladies WC Lobby 0.13 008		



Material Description:	Floor Tiles and Adhesive - Vinyl Products	
Identification:	Previously Sampled - Asbestos Detected	
Approx. quantity:	3 m ²	
Accessibility	Easy	Assessment Score
Product type:	Vinyl	1
Extent of Damage:	Slight / minor damage	1
Surface Treatment:	Non-friable	0
Asbestos type:	Chrysotile	1
Material Assessment Score:		3
Priority Assessment Score:		Negligible
Action:	Manage	
Comments:	Previously sampled ref: Armour 4/12/19 Sample DK/2	

Document Name	Author	Issued by	Revision Number	Issue Date	Page No
2021	David Kelly	Armour AS	1	24/10/2021	15

Item No: 9

Sample No: N/A

Location: Ground Floor - Main Building - Lobby 0.12 009



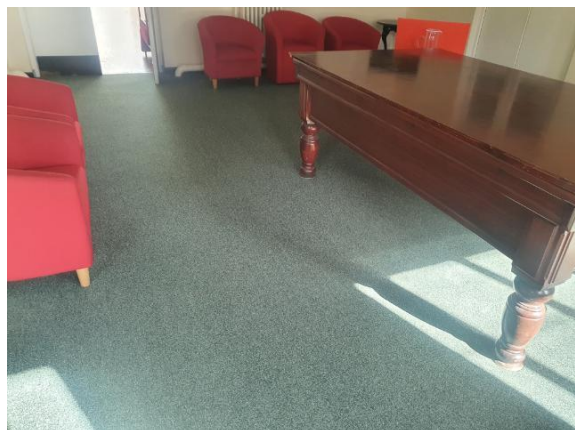
Material Description:	Floor Tiles and Adhesive - Vinyl Products	
Identification:	Previously Sampled - Asbestos Detected	
Approx. quantity:	20 m ²	
Accessibility	Difficult	<i>Assessment Score</i>
Product type:	Vinyl	1
Extent of Damage:	Slight / minor damage	1
Surface Treatment:	Non-friable	0
Asbestos type:	Chrysotile	1
Material Assessment Score:		3
Priority Assessment Score:		Negligible
Action:	Manage	
Comments:	Previously sampled ref: Armour 4/12/19 Sample DK/5. Under carpet	

Document Name	Author	Issued by	Revision Number	Issue Date	Page No
2021	David Kelly	Armour AS	1	24/10/2021	16

Item No: 10

Sample No: N/A

Location: Ground Floor - Main Building - Mess Room 0.20 and 0.21 010



Material Description:	Floor Tiles and Adhesive - Vinyl Products	
Identification:	Previously Sampled - Asbestos Detected	
Approx. quantity:	60 m ²	
Accessibility	Difficult	Assessment Score
Product type:	Vinyl	1
Extent of Damage:	Slight / minor damage	1
Surface Treatment:	Non-friable	0
Asbestos type:	Chrysotile	1
Material Assessment Score:		3
Priority Assessment Score:		Negligible
Action:	Manage	
Comments:	Previously sampled ref: Armour 4/12/19 Sample DK/2 and DK/5. Under carpet	

Document Name	Author	Issued by	Revision Number	Issue Date	Page No
2021	David Kelly	Armour AS	1	24/10/2021	17

Item No: 13

Sample No: N/A

Location: Ground Floor - Main Building - Stores 0.33 013



Material Description:	Floor Tiles and Adhesive - Vinyl Products	
Identification:	Previously Sampled - Asbestos Detected	
Approx. quantity:	32 m ²	
Accessibility	Easy	<i>Assessment Score</i>
Product type:	Vinyl	1
Extent of Damage:	Slight / minor damage	1
Surface Treatment:	Non-friable	0
Asbestos type:	Chrysotile	1
Material Assessment Score:		3
Priority Assessment Score:		Negligible
Action:	Manage	
Comments:	Previously sampled ref: Armour 4/12/19 Sample DK/2 and DK/5.	

Document Name	Author	Issued by	Revision Number	Issue Date	Page No
2021	David Kelly	Armour AS	1	24/10/2021	18

Item No: 14

Sample No: N/A

Location: Ground Floor - Main Building - Store 0.36 014



Material Description:	Floor Tiles and Adhesive - Vinyl Products	
Identification:	Previously Sampled - Asbestos Detected	
Approx. quantity:	14 m ²	
Accessibility	Easy	<i>Assessment Score</i>
Product type:	Vinyl	1
Extent of Damage:	Moderate damage	2
Surface Treatment:	Non-friable	0
Asbestos type:	Chrysotile	1
Material Assessment Score:		4
Priority Assessment Score:		Negligible
Action:	Manage	
Comments:	Previously sampled ref: Armour 4/12/19 Sample DK/9	

Document Name	Author	Issued by	Revision Number	Issue Date	Page No
2021	David Kelly	Armour AS	1	24/10/2021	19

Item No: 15

Sample No: N/A

Location: Ground Floor - Main Building - Store 0.36 015



Material Description:	Sink Pad - Bituminous Product	
Identification:	Previously Sampled - Asbestos Detected	
Approx. quantity:	1 no	
Accessibility	Medium	Assessment Score
Product type:	Bitumen	1
Extent of Damage:	Slight / minor damage	1
Surface Treatment:	Non-friable	0
Asbestos type:	Chrysotile	1
Material Assessment Score:		3
Priority Assessment Score:		Negligible
Action:	Manage	
Comments:	Previously sampled ref: Armour 4/12/19 Sample DK/10	

Document Name	Author	Issued by	Revision Number	Issue Date	Page No
2021	David Kelly	Armour AS	1	24/10/2021	20

Item No: 17

Sample No: N/A

Location: First Floor - Main Building - Store 1.15 017



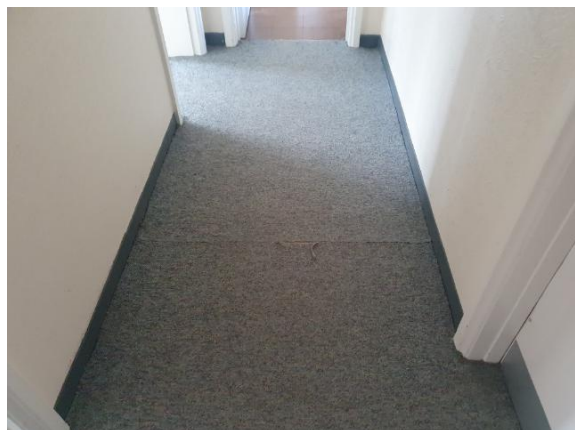
Material Description:	Pipe Running through Ceiling - Cement Product	
Identification:	Presumed to Contain Asbestos	
Approx. quantity:	<1 LM	
Accessibility	Difficult	<i>Assessment Score</i>
Product type:	Cement	1
Extent of Damage:	Moderate damage	2
Surface Treatment:	Unsealed Cement	1
Asbestos type:	Chrysotile	1
Material Assessment Score:		5
Priority Assessment Score:		Low
Action:	Manage	
Comments:	Not possible to sample due to stored items blocking access	

Document Name	Author	Issued by	Revision Number	Issue Date	Page No
2021	David Kelly	Armour AS	1	24/10/2021	21

Item No: 18

Sample No: N/A

Location: First Floor - Main Building - Offices 1.24,1.21,1.22 and Corridor 1.20]



Material Description:	Floor Tiles and Adhesive - Vinyl Products	
Identification:	Previously Sampled - Asbestos Detected	
Approx. quantity:	32 m ²	
Accessibility	Easy	Assessment Score
Product type:	Vinyl	1
Extent of Damage:	Slight / minor damage	1
Surface Treatment:	Non-friable	0
Asbestos type:	Chrysotile	1
Material Assessment Score:		3
Priority Assessment Score:		Negligible
Action:	Manage	
Comments:	Previously sampled ref: Armour 4/12/19 Sample DK/12. Under carpet in 3 rooms	

Document Name	Author	Issued by	Revision Number	Issue Date	Page No
2021	David Kelly	Armour AS	1	24/10/2021	22

Item No: 19

Sample No: N/A

Location: First Floor - Main Building - Rooms 1.18 and 1.19



Material Description:	Floor Tiles and Adhesive - Vinyl Products	
Identification:	Previously Sampled - Asbestos Detected	
Approx. quantity:	15 m ²	
Accessibility	Easy	Assessment Score
Product type:	Vinyl	1
Extent of Damage:	Slight / minor damage	1
Surface Treatment:	Non-friable	0
Asbestos type:	Chrysotile	1
Material Assessment Score:		3
Priority Assessment Score:		Negligible
Action:	Manage	
Comments:	Previously sampled ref: Armour 4/12/19 Sample DK/12	

Document Name	Author	Issued by	Revision Number	Issue Date	Page No
2021	David Kelly	Armour AS	1	24/10/2021	23

Item No: 21

Sample No: N/A

Location: First Floor - Main Building - Corridor 021



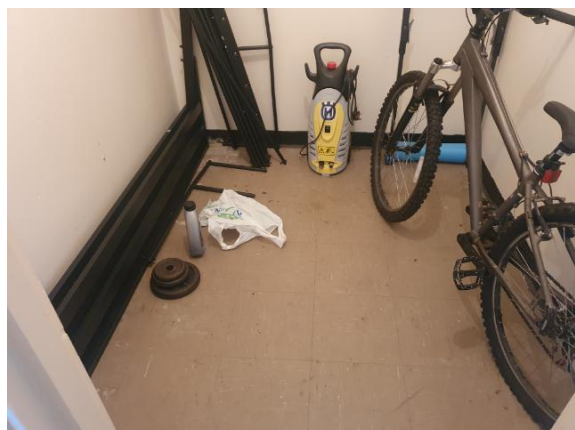
Material Description:	Floor Tiles and Adhesive - Vinyl Products	
Identification:	Previously Sampled - Asbestos Detected	
Approx. quantity:	17 m ²	
Accessibility	Easy	Assessment Score
Product type:	Vinyl	1
Extent of Damage:	Slight / minor damage	1
Surface Treatment:	Non-friable	0
Asbestos type:	Chrysotile	1
Material Assessment Score:		3
Priority Assessment Score:		Negligible
Action:	Manage	
Comments:	Previously sampled ref: Armour 4/12/19 Sample DK/16	

Document Name	Author	Issued by	Revision Number	Issue Date	Page No
2021	David Kelly	Armour AS	1	24/10/2021	24

Item No: 22

Sample No: N/A

Location: First Floor - Main Building - Stores 1.28,1.31 and 1.34



Material Description:	Floor Tiles and Adhesive - Vinyl Products	
Identification:	Previously Sampled - Asbestos Detected	
Approx. quantity:	12 m ²	
Accessibility	Easy	Assessment Score
Product type:	Vinyl	1
Extent of Damage:	Slight / minor damage	1
Surface Treatment:	Non-friable	0
Asbestos type:	Chrysotile	1
Material Assessment Score:		3
Priority Assessment Score:		Negligible
Action:	Manage	
Comments:	Previously sampled ref: Armour DK/16	

Document Name	Author	Issued by	Revision Number	Issue Date	Page No
2021	David Kelly	Armour AS	1	24/10/2021	25

Item No: 23

Sample No: N/A

Location: First Floor - Main Building - Classrooms 1.29, 1.30 and Cupboard 1.32



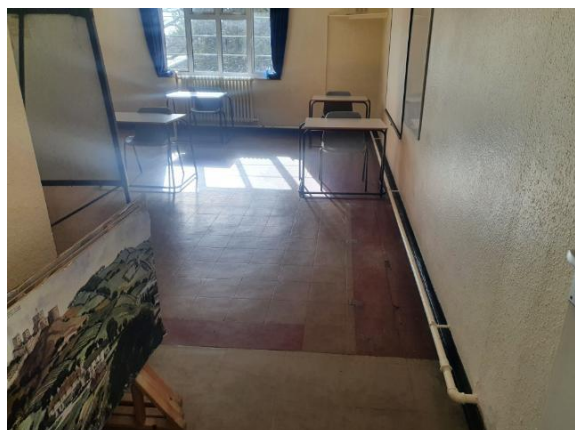
Material Description:	Floor Tiles and Adhesive - Vinyl Products	
Identification:	Previously Sampled - Asbestos Detected	
Approx. quantity:	54 m ²	
Accessibility	Easy	Assessment Score
Product type:	Vinyl	1
Extent of Damage:	Slight / minor damage	1
Surface Treatment:	Non-friable	0
Asbestos type:	Chrysotile	1
Material Assessment Score:		3
Priority Assessment Score:		Negligible
Action:	Manage	
Comments:	Previously sampled ref: Armour 4/12/19 Sample DK/16	

Document Name	Author	Issued by	Revision Number	Issue Date	Page No
2021	David Kelly	Armour AS	1	24/10/2021	26

Item No: 24

Sample No: N/A

Location: First Floor - Main Building - Classroom 1.29



Material Description:	Floor Tiles and Adhesive - Vinyl Products	
Identification:	Previously Sampled - Asbestos Detected	
Approx. quantity:	25 m ²	
Accessibility	Easy	<i>Assessment Score</i>
Product type:	Vinyl	1
Extent of Damage:	Moderate damage	2
Surface Treatment:	Non-friable	0
Asbestos type:	Chrysotile	1
Material Assessment Score:		4
Priority Assessment Score:		Negligible
Action:	Manage	
Comments:	Previously sampled ref: Armour 4/12/19 Sample DK/12	

Document Name	Author	Issued by	Revision Number	Issue Date	Page No
2021	David Kelly	Armour AS	1	24/10/2021	27

Item No: 25

Sample No: N/A

Location: First Floor - Main Building - WC 1.27 and Corridor



Material Description:	Floor Tiles and Adhesive - Vinyl Products	
Identification:	Previously Sampled - Asbestos Detected	
Approx. quantity:	8 m ²	
Accessibility	Easy	<i>Assessment Score</i>
Product type:	Vinyl	1
Extent of Damage:	Slight / minor damage	1
Surface Treatment:	Non-friable	0
Asbestos type:	Chrysotile	1
Material Assessment Score:		3
Priority Assessment Score:		Negligible
Action:	Manage	
Comments:	Previously sampled ref: Armour 4/12/19 Sample DK/16	

Document Name	Author	Issued by	Revision Number	Issue Date	Page No
2021	David Kelly	Armour AS	1	24/10/2021	28

Item No: 26

Sample No: N/A

Location: External - Main Building 026



Material Description:	Cement Flue Pipes - Cement Product	
Identification:	Strongly Presumed to Contain Asbestos	
Approx. quantity:	1 LM	
Accessibility	Difficult	<i>Assessment Score</i>
Product type:	Cement	1
Extent of Damage:	Moderate damage	2
Surface Treatment:	Unsealed Cement	1
Asbestos type:	Chrysotile	1
Material Assessment Score:		5
Priority Assessment Score:		Low
Action:	Remove	
Comments:	No access to sample due to height restrictions. Pipe appears to be leaning which could be caused by damage. Remove flue	

Document Name	Author	Issued by	Revision Number	Issue Date	Page No
2021	David Kelly	Armour AS	1	24/10/2021	29

Item No: 27

Sample No: N/A

Location: Sixth Floor - Building 7 027



Material Description:	Profiled Roof - Cement Product	
Identification:	Strongly Presumed to Contain Asbestos	
Approx. quantity:	800 m ²	
Accessibility	Difficult	<i>Assessment Score</i>
Product type:	Cement	1
Extent of Damage:	Moderate damage	2
Surface Treatment:	Unsealed Cement	1
Asbestos type:	Chrysotile	1
Material Assessment Score:		5
Priority Assessment Score:		Low
Action:	Manage	
Comments:	Several holes in roof	

Document Name	Author	Issued by	Revision Number	Issue Date	Page No
2021	David Kelly	Armour AS	1	24/10/2021	30

Item No: 28

Sample No: N/A

Location: External - Building 7 028



Material Description:	Downpipes - Cement Product	
Identification:	Previously Sampled - Asbestos Detected	
Approx. quantity:	3 no	
Accessibility	Medium	<i>Assessment Score</i>
Product type:	Cement	1
Extent of Damage:	Moderate damage	2
Surface Treatment:	Unsealed Cement	1
Asbestos type:	Chrysotile	1
Material Assessment Score:		5
Priority Assessment Score:		Low
Action:	Remove	
Comments:	Previous sample ref: Armour Sample DK/17. One pipe has fallen off and the other two appear to be loose. 15LM	

Document Name	Author	Issued by	Revision Number	Issue Date	Page No
2021	David Kelly	Armour AS	1	24/10/2021	31

Item No: 29

Sample No: N/A

Location: External - Building 7 029



Material Description:	Guttering - Cement Product	
Identification:	Previously Sampled - Asbestos Detected	
Approx. quantity:	55 LM	
Accessibility	Difficult	<i>Assessment Score</i>
Product type:	Cement	1
Extent of Damage:	Slight / minor damage	1
Surface Treatment:	Unsealed Cement	1
Asbestos type:	Chrysotile	1
Material Assessment Score:		4
Priority Assessment Score:		Negligible
Action:	Manage	
Comments:	Previously sampled ref: Armour Sample DK/17	

Document Name	Author	Issued by	Revision Number	Issue Date	Page No
2021	David Kelly	Armour AS	1	24/10/2021	32

Item No: 30

Sample No: N/A

Location: External - Building 4 030



Material Description:	Profiled Roof - Cement Product	
Identification:	Strongly Presumed to Contain Asbestos	
Approx. quantity:	510 m ²	
Accessibility	Difficult	<i>Assessment Score</i>
Product type:	Cement	1
Extent of Damage:	Moderate damage	2
Surface Treatment:	Unsealed Cement	1
Asbestos type:	Chrysotile	1
Material Assessment Score:		5
Priority Assessment Score:		Low
Action:	Manage	
Comments:	Several holes in roof and likely debris. Do not sweep floor	

Document Name	Author	Issued by	Revision Number	Issue Date	Page No
2021	David Kelly	Armour AS	1	24/10/2021	33

Item No: 31

Sample No: N/A

Location: External - Building 4 031



Material Description:	Downpipes - Cement Product	
Identification:	Previously Sampled - Asbestos Detected	
Approx. quantity:	6 no	
Accessibility	Medium	<i>Assessment Score</i>
Product type:	Cement	1
Extent of Damage:	Slight / minor damage	1
Surface Treatment:	Unsealed Cement	1
Asbestos type:	Chrysotile	1
Material Assessment Score:		4
Priority Assessment Score:		Negligible
Action:	Remove	
Comments:	Previous sample ref: Armour Sample DK/17. 30LM	

Document Name	Author	Issued by	Revision Number	Issue Date	Page No
2021	David Kelly	Armour AS	1	24/10/2021	34

Item No: 32

Sample No: N/A

Location: External - Building 4 032



Material Description:	Guttering - Cement Product	
Identification:	Previously Sampled - Asbestos Detected	
Approx. quantity:	55 LM	
Accessibility	Difficult	<i>Assessment Score</i>
Product type:	Cement	1
Extent of Damage:	Slight / minor damage	1
Surface Treatment:	Unsealed Cement	1
Asbestos type:	Chrysotile	1
Material Assessment Score:		4
Priority Assessment Score:		Negligible
Action:	Manage	
Comments:	Previously sampled ref: Armour Sample DK/17	

Document Name	Author	Issued by	Revision Number	Issue Date	Page No
2021	David Kelly	Armour AS	1	24/10/2021	35

Item No: 33

Sample No: N/A

Location: External - Building 4 033



Material Description:	Roof Edging - Cement Product	
Identification:	Strongly Presumed to Contain Asbestos	
Approx. quantity:	42 LM	
Accessibility	Difficult	<i>Assessment Score</i>
Product type:	Cement	1
Extent of Damage:	Slight / minor damage	1
Surface Treatment:	Unsealed Cement	1
Asbestos type:	Chrysotile	1
Material Assessment Score:		4
Priority Assessment Score:		Negligible
Action:	Manage	
Comments:	N/A	

Document Name	Author	Issued by	Revision Number	Issue Date	Page No
2021	David Kelly	Armour AS	1	24/10/2021	36

Item No: 34

Sample No: N/A

Location: External - Building 4 034



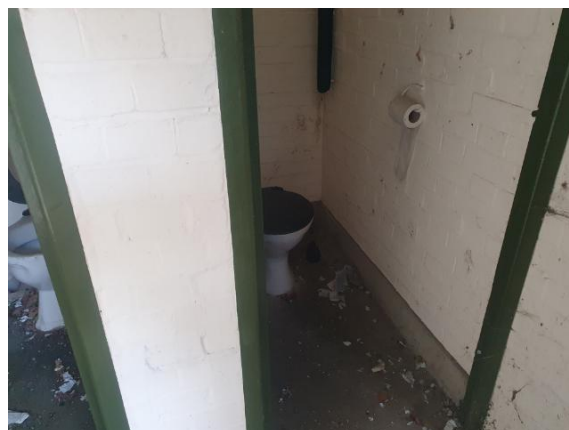
Material Description:	Damp Proof Course - Bituminous Product	
Identification:	Previously Sampled - Asbestos Detected	
Approx. quantity:	Entire Perimeter	
Accessibility	Difficult	Assessment Score
Product type:	Bitumen	1
Extent of Damage:	Slight / minor damage	1
Surface Treatment:	Non-friable	0
Asbestos type:	Chrysotile	1
Material Assessment Score:		3
Priority Assessment Score:		Negligible
Action:	Manage	
Comments:	Previously sampled ref: Armour Sample DK/18	

Document Name	Author	Issued by	Revision Number	Issue Date	Page No
2021	David Kelly	Armour AS	1	24/10/2021	37

Item No: 35

Sample No: N/A

Location: Ground Floor - Building 4 - WC and Store 035



Material Description:	Toilet Seats - PVC / Reinforced Plastics	
Identification:	Strongly Presumed to Contain Asbestos	
Approx. quantity:	2 LM	
Accessibility	Difficult	<i>Assessment Score</i>
Product type:	Bakelite	1
Extent of Damage:	Slight / minor damage	1
Surface Treatment:	Non-friable	0
Asbestos type:	Chrysotile	1
Material Assessment Score:		3
Priority Assessment Score:		Negligible
Action:	Manage	
Comments:	Not possible to sample as may damage integrity of seats	

Document Name	Author	Issued by	Revision Number	Issue Date	Page No
2021	David Kelly	Armour AS	1	24/10/2021	38

Item No: 36

Sample No: DK/19

Location: Building 9 Garage 036



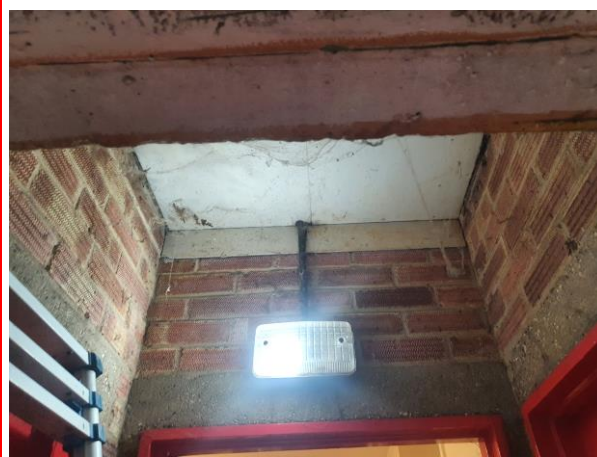
Material Description:	Profiled Cement Roof	
Identification:	Sampled – DK/19	
Approx. quantity:	18 m2	
Accessibility	Low	Assessment Score
Product type:	Cement	1
Extent of Damage:	Minor	1
Surface Treatment:	Unsealed	1
Asbestos type:	Chrysotile	1
Material Assessment Score:		3
Priority Assessment Score:		Low
Action:	Manage	
Comments:	Previously a no access area, now accessed.	

Document Name	Author	Issued by	Revision Number	Issue Date	Page No
2021	David Kelly	Armour AS	1	24/10/2021	39

Item No: 37

Sample No: DK/20

Location: Building 8 GF Lobby 037



Material Description:	Ceiling Panels	
Identification:	Sampled – DK/20	
Approx. quantity:	1m2	
Accessibility	Medium	Assessment Score
Product type:	Cement	1
Extent of Damage:	Minor	1
Surface Treatment:	Unsealed	1
Asbestos type:	Chrysotile	1
Material Assessment Score:		3
Priority Assessment Score:		Low
Action:	Manage	
Comments:	Previously a no access area, now accessed.	

Document Name	Author	Issued by	Revision Number	Issue Date	Page No
2021	David Kelly	Armour AS	1	24/10/2021	40

Item No: 38

Sample No: DK/21

Location: Building 8 GF Electrical Cupboard 038



Material Description:	Ceiling Panels	
Identification:	Sampled – DK/21	
Approx. quantity:	1m2	
Accessibility	Medium	Assessment Score
Product type:	Cement	1
Extent of Damage:	Minor	1
Surface Treatment:	Unsealed	1
Asbestos type:	Chrysotile	1
Material Assessment Score:		3
Priority Assessment Score:		Low
Action:	Manage	
Comments:	Previously a no access area, now accessed.	

Document Name	Author	Issued by	Revision Number	Issue Date	Page No
2021	David Kelly	Armour AS	1	24/10/2021	41

Section 5: Negative Items

Item No:	11	Sample No:	N/A
Location:	Ground Floor - Main Building 1 - Armoury and Ammo Stores 0.29, 0.30 and 0.31 011		



Material Description:	No Suspect Materials Found	
Identification:	N/A	
Approx. quantity:	N/A	
Accessibility	N/A	<i>Assessment Score</i>
Product type:	N/A	N/A
Extent of Damage:	N/A	N/A
Surface Treatment:	N/A	N/A
Asbestos type:	N/A	N/A
Material Assessment Score:		N/A
Priority Assessment Score:		N/A
Action:	N/A	
Comments:	Previously not accessed rooms. Now accessed and no asbestos found	

Document Name	Author	Issued by	Revision Number	Issue Date	Page No
2021	David Kelly	Armour AS	1	24/10/2021	42

Item No: 12

Sample No: N/A

Location: Ground Floor - Main Building - Under Stairs
Cupboard 012



Material Description:	No Suspect Materials Found	
Identification:	N/A	
Approx. quantity:	N/A	
Accessibility	N/A	<i>Assessment Score</i>
Product type:	N/A	N/A
Extent of Damage:	N/A	N/A
Surface Treatment:	N/A	N/A
Asbestos type:	N/A	N/A
Material Assessment Score:		N/A
Priority Assessment Score:		N/A
Action:	N/A	
Comments:	Room previously not accessed. Now accessed and no asbestos found	

Document Name	Author	Issued by	Revision Number	Issue Date	Page No
2021	David Kelly	Armour AS	1	24/10/2021	43

Item No: 16

Sample No: N/A

Location: Ground Floor – Armour Cupboard 016



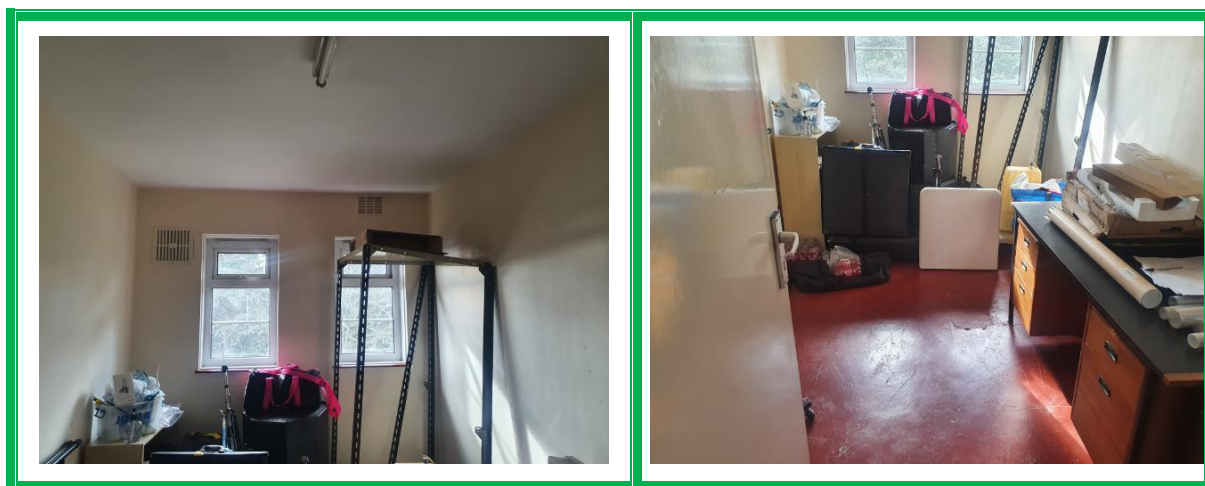
Material Description:	No Suspect Materials Found	
Identification:	N/A	
Approx. quantity:	N/A	
Accessibility	N/A	<i>Assessment Score</i>
Product type:	N/A	N/A
Extent of Damage:	N/A	N/A
Surface Treatment:	N/A	N/A
Asbestos type:	N/A	N/A
Material Assessment Score:		N/A
Priority Assessment Score:		N/A
Action:	N/A	
Comments:	Room previously not accessed, now accessed. No asbestos found	

Document Name	Author	Issued by	Revision Number	Issue Date	Page No
2021	David Kelly	Armour AS	1	24/10/2021	44

Item No: 20

Sample No: N/A

Location: First Floor - Main Building - Room 1.26 020



Material Description:	No Suspect Materials Found	
Identification:	N/A	
Approx. quantity:	N/A	
Accessibility	N/A	<i>Assessment Score</i>
Product type:	N/A	N/A
Extent of Damage:	N/A	N/A
Surface Treatment:	N/A	N/A
Asbestos type:	N/A	N/A
Material Assessment Score:		N/A
Priority Assessment Score:		N/A
Action:	N/A	
Comments:	Room previously not accessed. Now accessed and no asbestos found	

Document Name	Author	Issued by	Revision Number	Issue Date	Page No
2021	David Kelly	Armour AS	1	24/10/2021	45

Item No: 39

Sample No: DK/22

Location: Building 8 Living and Dining Room 039



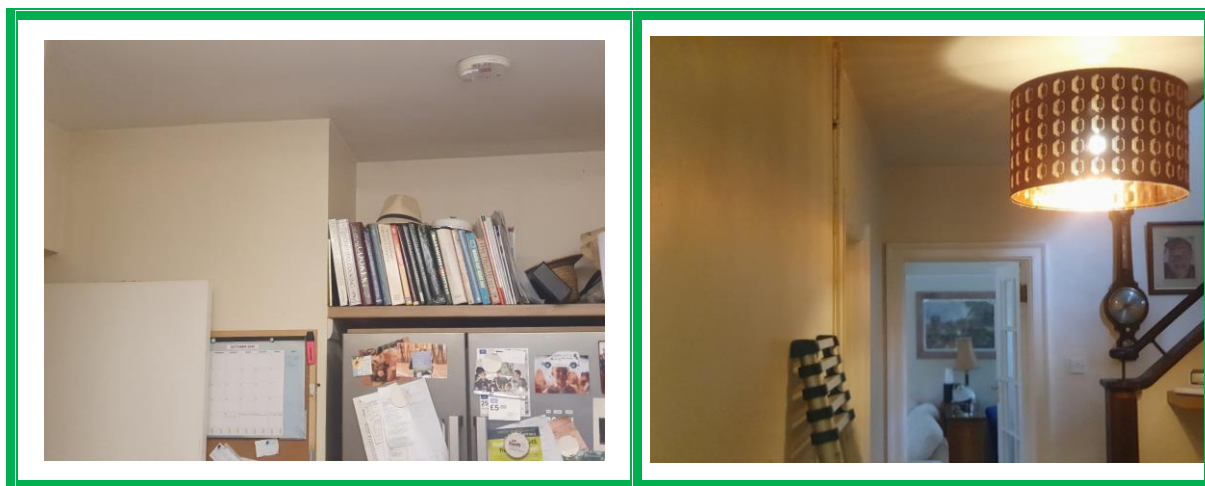
Material Description:	Sampled – No Asbestos Detected	
Identification:	N/A	
Approx. quantity:	N/A	
Accessibility	N/A	<i>Assessment Score</i>
Product type:	N/A	N/A
Extent of Damage:	N/A	N/A
Surface Treatment:	N/A	N/A
Asbestos type:	N/A	N/A
Material Assessment Score:		N/A
Priority Assessment Score:		N/A
Action:	N/A	
Comments:	Previously a no access area, now accessed. No asbestos found.	

Document Name	Author	Issued by	Revision Number	Issue Date	Page No
2021	David Kelly	Armour AS	1	24/10/2021	46

Item No: 40

Sample No: N/A

Location: Building 8 GF Kitchen, Hall, WC and Cupboards 040



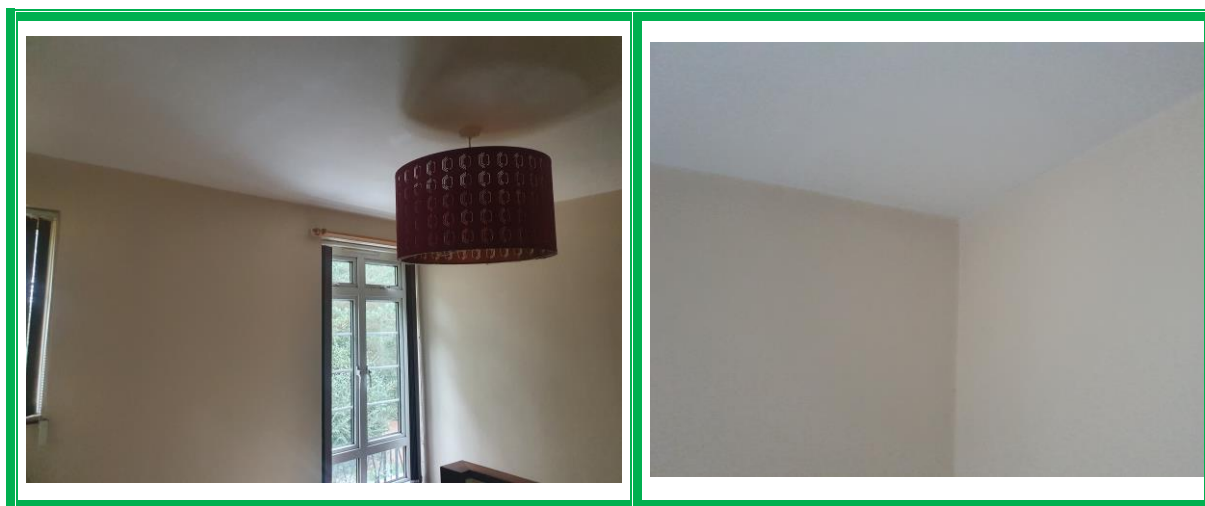
Material Description:	No Asbestos Suspected	
Identification:	N/A	
Approx. quantity:	N/A	
Accessibility	N/A	<i>Assessment Score</i>
Product type:	N/A	N/A
Extent of Damage:	N/A	N/A
Surface Treatment:	N/A	N/A
Asbestos type:	N/A	N/A
Material Assessment Score:		N/A
Priority Assessment Score:		N/A
Action:	N/A	
Comments:	Previously a no access area, now accessed. No asbestos found.	

Document Name	Author	Issued by	Revision Number	Issue Date	Page No
2021	David Kelly	Armour AS	1	24/10/2021	47

Item No: 41

Sample No: N/A

Location: Building 8 First Floor All Rooms 041



Material Description:	No Asbestos Suspected	
Identification:	N/A	
Approx. quantity:	N/A	
Accessibility	N/A	<i>Assessment Score</i>
Product type:	N/A	N/A
Extent of Damage:	N/A	N/A
Surface Treatment:	N/A	N/A
Asbestos type:	N/A	N/A
Material Assessment Score:		N/A
Priority Assessment Score:		N/A
Action:	N/A	
Comments:	Previously a no access area, now accessed. No asbestos found.	

Document Name	Author	Issued by	Revision Number	Issue Date	Page No
2021	David Kelly	Armour AS	1	24/10/2021	48



Section 6: Survey Objectives

Instructions were received from Kelvin Walker of Wessex RFCA to carry out a Re-Inspection asbestos survey at 6th Battalion the Rifles, C Company (Poole Detachment), Dorset, BH12 5AD in accordance with HSG264 and Armour Analytical's quality procedures.

The survey was carried out on 17 February 2021 to 18 February 2021 by David Kelly with the objective of facilitating a Re-Inspection report.

A survey with the objective of accessing previously no accessed areas was carried out on 18 October 2021 by David Kelly.

Document Name	Author	Issued by	Revision Number	Issue Date	Page No
2021	David Kelly	Armour AS	1	24/10/2021	49



Section 7: Survey Notes

This report has been written with reference to the various Guidance Notes etc, issued, and current at the date of this report and describes circumstances at the site on the date the investigation took place.

Where similar items exist in the building, only one or two samples may have been taken to ascertain the material content. It was assumed that similar products were of the same material.

Any person undertaking work within the buildings should be told of the presence of asbestos. This briefing also applies to any other person associated with the site, including staff, sub-contractors and others.

The drawings in the report are not to scale and are illustrative only to indicate approximate locations. The descriptions used are for location identification purposes.

All the recommendations described in this report are based upon assumptions made after consideration of the type of material, condition of the material, its location, analysis result and type of use the area is thought to be subjected to. However, statutory authorities or others could require amendments based on local knowledge, change in legislation, change in use or indeed other conditions or criteria.

Samples taken from floor tiles (or similar material) may include a bitumen adhesive as part of the sample. It is known that some proprietary brands of bitumen have an asbestos content and this will be included as an integral part of the bulk sample unless otherwise stated.

Due to the artex being non-homogenous, it is recommended to treat all areas as containing asbestos if you have a positive sample of artex.

Document Name	Author	Issued by	Revision Number	Issue Date	Page No
2021	David Kelly	Armour AS	1	24/10/2021	50

Section 8: Material Assessment Algorithm

Variable	Score	Examples
Product type	1	Vinyl, 'Bakelite', Cement, Textured Coating, Non-Friable Debris, Floor Tiles, Bitumen, Reinforced Plastics, Mastic (putty), Windowsills
	2	Asbestos Insulating Board, Paper, Rope, Burned Cement Debris, Flashguards, Gaskets
	3	Pipe Insulation, Spray Coating, Friable Debris, Loose Fill Asbestos
Condition / Damage	0	Good
	1	Slight / Minor Damage
	2	Moderate Damage – Breakage to Surface Treatment
	3	Major Damage – Smashed or Exposed Material
Surface Treatment	0	Non-Friable E.G. Vinyl
	1	Enclosed Insulation, Encapsulated AIB, Unsealed Cement, Woven Material, Paper
	2	Unsealed AIB, Encapsulated Insulation, Encapsulated Pipe Lagging
	3	Unsealed Insulation, Spray Coating, Unsealed Pipe Lagging
Asbestos Type	1	Chrysotile
	2	Amosite & Other Amphiboles
	3	Crocidolite

The scores from each of the four sections are added together to produce a risk score:

Risk score	Risk assessment
10 or more	High risk
7 – 9	Medium risk
5 – 6	Low risk
4 & below	Negligible risk

Section 9: Certificates of Bulk Analysis



Our Ref: J220314 Fl: 4
Your Ref: 3700
Date: 22/10/2021

ENVIROCHEM
Analytical Laboratories Ltd.
12 The Gardens
Broadcut, Fareham
Hampshire
PO16 8SS



Tel: (01329) 287777
Fax: (01329) 287755
www.envirochem.co.uk
office@envirochem.co.uk

Asbestos Fibre Identification Report

Client: Armour Analytical Services Ltd
Admirals Yard, Station Road, Patchway, Bristol, BS34 6LR
Site Address: 7th Battalion, Poole TA Centre, Dorset, BH12 5AD
Sampled By: Armour Analytical Services Ltd
Date sampled/received: 21st October 2021
Date analysed: 22nd October 2021
Analyst/s: Raphael Mirzaian
Analysis Location: 12 The Gardens, Broadcut, Fareham, Hampshire, PO16 8SS

ANALYTICAL PROCEDURE

Fibre identification was carried out in accordance with the documented 'in-house' method (2.01) based on the HSE Guidance Note HSG 248. These employed stereo microscopy, polarized microscopy and dispersion staining techniques.

RESULTS

Sample No.	Sample Ref.	Location	Asbestos Detected	Asbestos Type
DK/19	BS712242	Garage. Profiled cement roof.	Yes	Chrysotile
DK/20	BS712243	Lobby. Ceiling panels.	Yes	Chrysotile
DK/21	BS712244	Electric cupboard. Ceiling panels.	Yes	Chrysotile
DK/22	BS712245	Living room & dining room. Textured coating to ceiling.	No	

NOTES:

1. Samples were analysed for the presence of 8 types of asbestos fibres: crocidolite (blue), amosite (brown), chrysotile (white), anthophyllite, actinolite and tremolite.
2. The results shown in this test report specifically refer to the sample(s) tested as received unless otherwise stated and samples collected by the client are evaluated using information provided by the client. For samples collected by the client the date of receipt is deemed to be the same as the date sampled.
3. Envirochem is a UKAS accredited laboratory for sampling and identification of asbestos containing materials.
4. Comments, observations and opinions are outside the scope of UKAS accreditation.
5. The analytical method in the HSG248 does not quantify the amount of asbestos present, therefore UKAS accreditation does not permit quantification.
6. If, during fibre identification, only 1 or 2 fibres are seen and identified as asbestos, then the term 'trace asbestos identified' is used.
7. This report shall not be reproduced except in full, without written approval of Envirochem.

SIGNATURE:



Authorised signatory

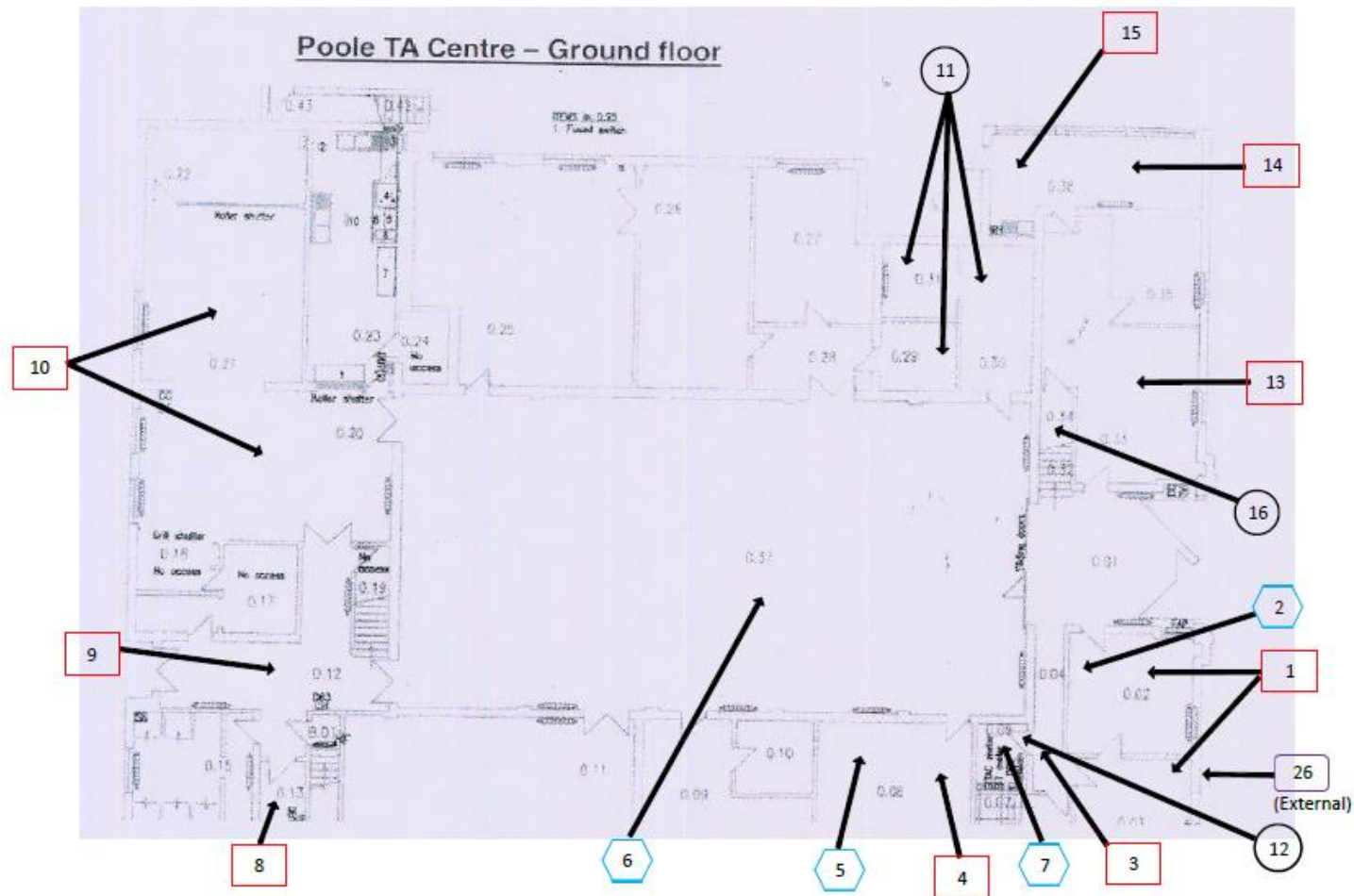
PRINT NAME: Raphael Mirzaian







Reg. No. 2378228 England. Registered Office: Envirochem, 12 The Gardens, Broadcut, Fareham, Hampshire, PO16 8SS.

Page 1 of 1

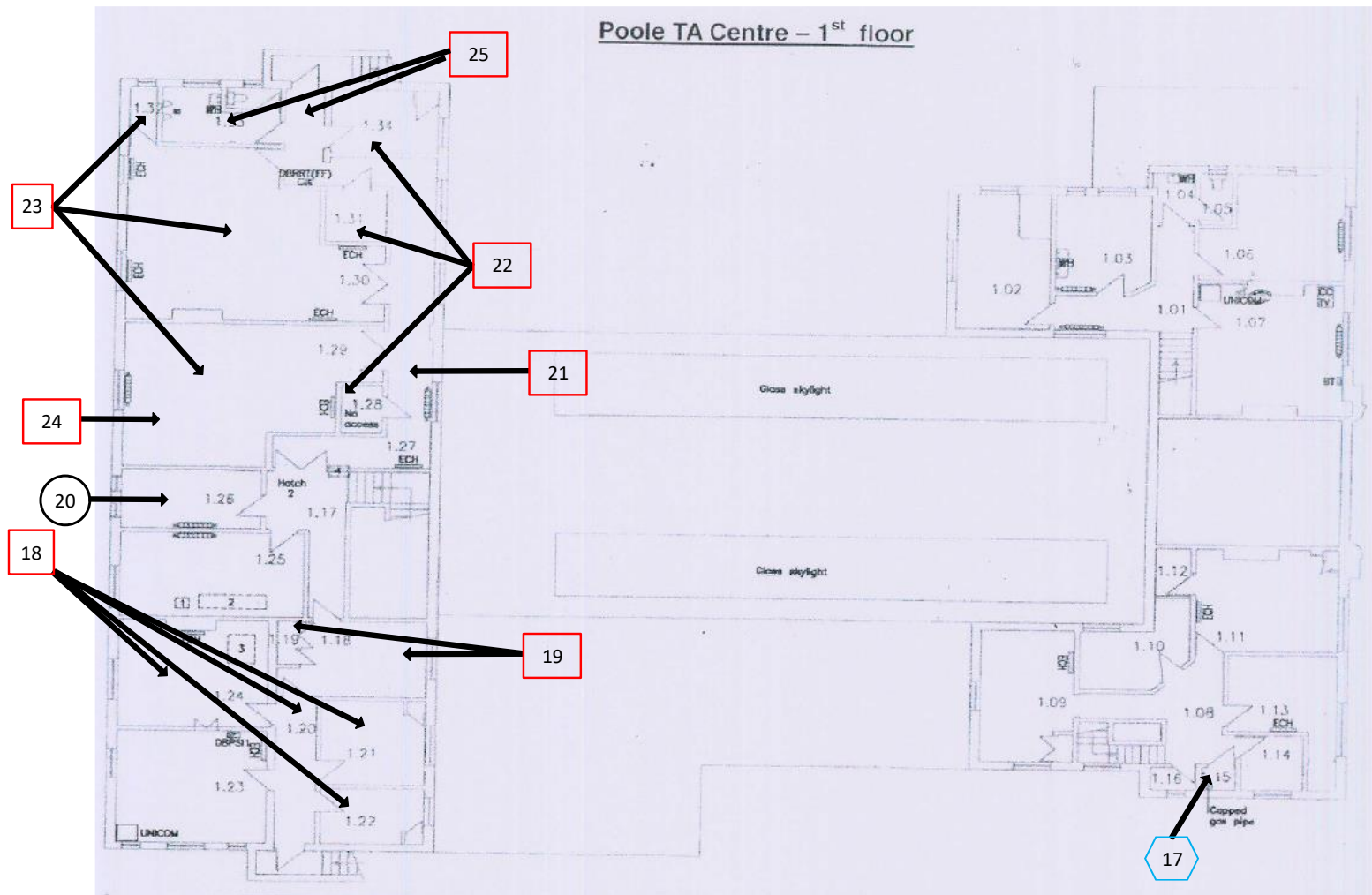
Document Name	Author	Issued by	Revision Number	Issue Date	Page No
2021	David Kelly	Armour AS	1	24/10/2021	52

Section 10: Site Plan

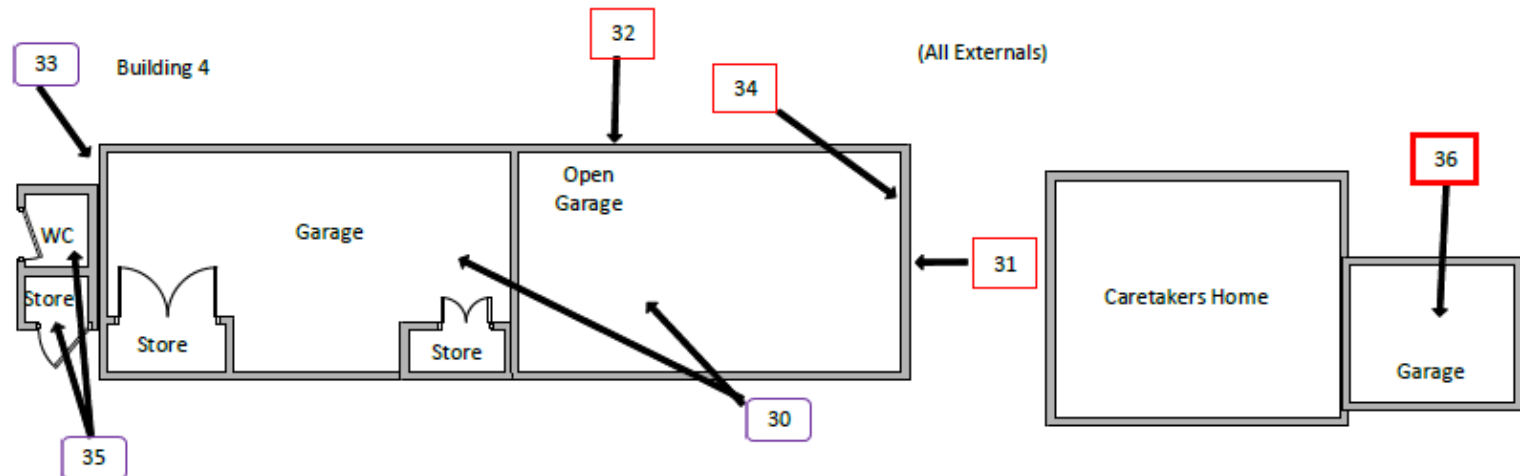
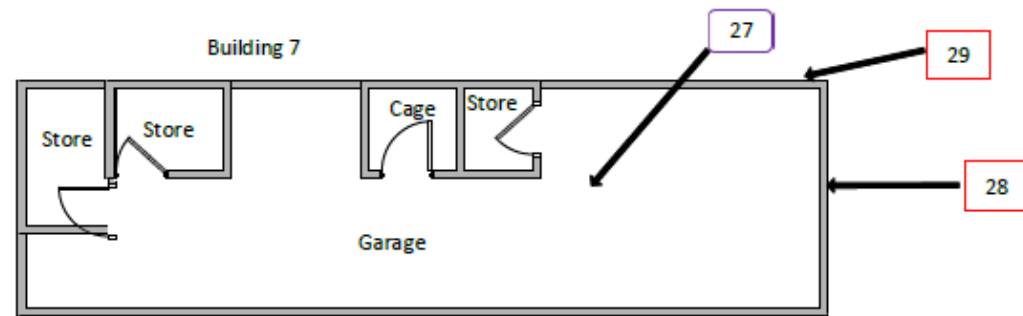








Key	
	Visual Inspection
	Asbestos Detected (Positive Item)
	No Asbestos Detected (Negative Item)
	Presumed to Contain Asbestos
	Strongly Presumed to Contain Asbestos
	No Access

Document Name	Author	Issued by	Revision Number	Issue Date	Page No
2021	David Kelly	Armour AS	1	24/10/2021	53

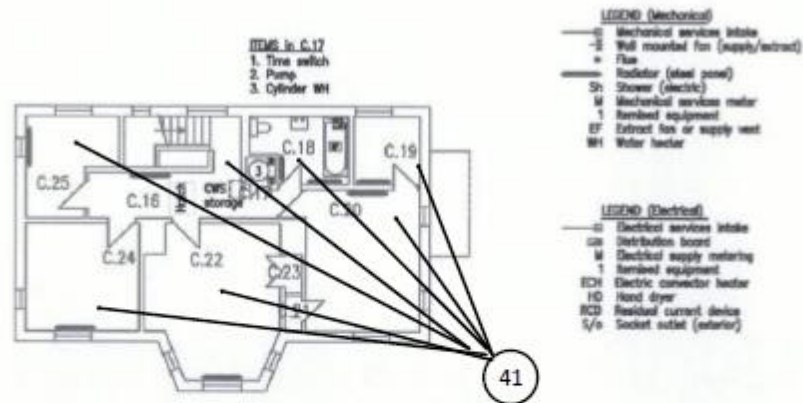


Document Name	Author	Issued by	Revision Number	Issue Date	Page No
2021	David Kelly	Armour AS	1	24/10/2021	54

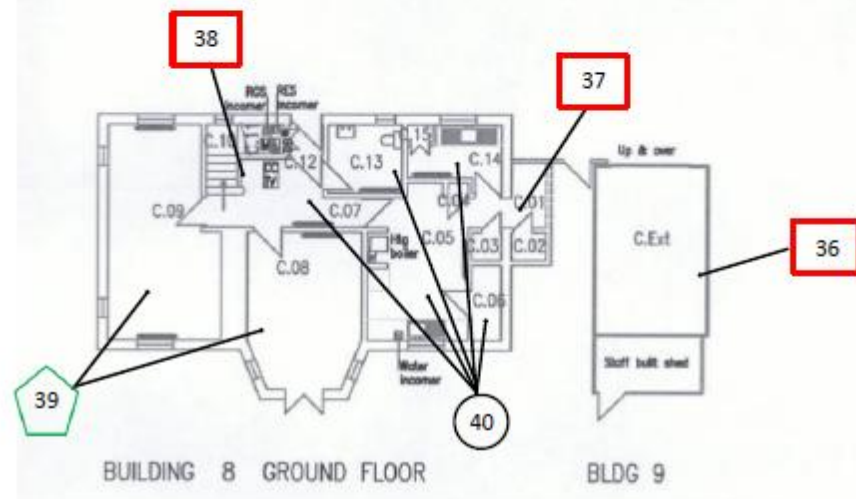








Key	
	Visual Inspection
	Asbestos Detected (Positive Item)
	No Asbestos Detected (Negative Item)
	Presumed to Contain Asbestos
	Strongly Presumed to Contain Asbestos
	No Access

Document Name	Author	Issued by	Revision Number	Issue Date	Page No
2021	David Kelly	Armour AS	1	24/10/2021	55



BUILDING 8 FIRST FLOOR



Key	
	Visual Inspection
	Asbestos Detected (Positive Item)
	No Asbestos Detected (Negative Item)
	Presumed to Contain Asbestos
	Strongly Presumed to Contain Asbestos
	No Access

Document Name	Author	Issued by	Revision Number	Issue Date	Page No
2021	David Kelly	Armour AS	1	24/10/2021	56



I the surveyor can confirm that this report is accurate to my findings onsite and this survey has been Content checked by myself.

Checked by: Will Fyles

Date: 24/10/2021

I the Admin Manager can confirm that this report is accurate to the paperwork received and this survey has been quality checked by myself.

Checked by: Andrea Bansee

Date: 24/10/2021

Report Compiled By

Armour Analytical Services Ltd, Admirals Yard, Station Road, Bristol, BS34 6LR

Document Name	Author	Issued by	Revision Number	Issue Date	Page No
2021	David Kelly	Armour AS	1	24/10/2021	57