

Project Number A-01339 (5908)

**Re-Inspection
Asbestos Survey Report**

**(20) 675 Army Air Corps
Somerset
TA1 5LJ**



Working in Partnership with Shield Services Group



Document Name	Author	Issued by	Revision Number	Issue Date	Page No
2022	David Kelly	Armour AS	0	28/04/2022	1

Contents

Section	
1	Contact Details
2	Executive Summary
3	Site Description & Survey Information
4	Positive, Presumed or No Access Items
5	Negative Photos Sheets
6	Survey Objectives
7	Survey Notes
8	Material Assessment Algorithm
9	Certificates of Bulk Analysis
10	Site Plan

Document Name	Author	Issued by	Revision Number	Issue Date	Page No
2022	David Kelly	Armour AS	0	28/04/2022	2



Section 1: Contact Details

Client Details:		Instructing Party:	
Wessex RFCA Mount House Mount Street Taunton TA1 3QE		Wessex RFCA Mount House Mount Street Taunton TA1 3QE	
Contact Name:	Kelvin Walker	Contact Name:	Kelvin Walker
Tel: 01823 250116	Fax: N/A	Tel: 01823 250116	Fax: N/A

Site Address:		Report Author:	
675 Army Air Corps Somerset TA1 5LJ		Armour Analytical Services Unit 6 Guardian Street Industrial Estate Warrington WA5 1SJ	
Contact Name:	Mark Strutt	Contact Name:	Andrea Bansee
Tel:	Fax: N/A	Mobile: 07468535836	

Lead Surveyor's Name:	Lead Surveyor's Authorising Signature:
David Kelly	

Document Name	Author	Issued by	Revision Number	Issue Date	Page No
2022	David Kelly	Armour AS	0	28/04/2022	3



Section 2: Executive Summary

No samples were taken during this survey.

In addition to the above sampled items, the following items have been either been "Previously Sampled", "Strongly Presumed" To Contain Asbestos or "Presumed" to Contain Asbestos as they were either visually identified in being so, labelled after previously being sampled on prior surveys or not accessible at the time of the survey:

The following items have been either been "Strongly Presumed" To Contain Asbestos or "Presumed" to Contain Asbestos as they were either visually identified in being so, labelled after previously being sampled on prior surveys or not accessible at the time of the survey:

Status	Sample Type	Location
Previously Sampled	Pipe Sleeve in Wall - Cement Product	Ground Floor WC 016
Presumed	Toilet Seats - PVC / Reinforced Plastics	Ground Floor Changing Room 017
Previously Sampled	Floor Tiles and Adhesive - Vinyl Products	Ground Floor Offices x 2 018
Presumed	Safe - No Access Gained	Ground Floor Office 019
Previously Sampled	Floor Tiles and Adhesive - Vinyl Products	Ground Floor Offices x 2 020
Previously Sampled	Floor Tiles and Adhesive - Vinyl Products	Ground Floor Offices x 2 021
Presumed	Safes x 2 - No Access Gained	Ground Floor Offices x 2 022
Previously Sampled	Floor Tiles and Adhesive - Vinyl Products	Ground Floor Offices x 3 023
Previously Sampled	Floor Tiles and Adhesive - Vinyl Products	Ground Floor Corridor 024
Previously Sampled	Floor Tiles and Adhesive - Vinyl Products	Ground Floor Stage/Gym 025
Previously Sampled	Floor Tiles and Adhesive - Vinyl Products	Ground Floor Cadet Locker Room 026
Previously Sampled	Floor Tiles and Adhesive - Vinyl Products	Ground Floor Signal Store and Cupboard 037
Presumed	Panels above Cage - Insulating Board	Ground Floor Armoury 038
Previously Sampled	Panel to Top of Fireplace - Cement Product	First Floor Officer's Lounge 001
Previously Sampled	Floor Tiles and Adhesive - Vinyl Products	First Floor Officer's Lounge 002
Presumed	Toilet Seats - PVC / Reinforced Plastics	First Floor WC's x 2 003

Document Name	Author	Issued by	Revision Number	Issue Date	Page No
2022	David Kelly	Armour AS	0	28/04/2022	4

Status	Sample Type	Location
Previously Sampled	Floor Tiles and Adhesive - Vinyl Products	First Floor Conference Room 004
Previously Sampled	Floor Tiles and Adhesive - Vinyl Products	First Floor The Harding Room 005
Previously Sampled	Door Panel and Door Infill Panels - Insulating Board	First Floor Corridor 006
Presumed	Panel to Door - Insulating Board	First Floor Loft Space 007
Previously Sampled	Floor Tiles and Adhesive - Vinyl Products	First Floor Corridor 008
Previously Sampled	Door Panel and Door Infill Panels - Insulating Board	First Floor Landing 009
Previously Sampled	Floor Tiles and Adhesive - Vinyl Products	First Floor Office 010
Previously Sampled	Floor Tiles and Adhesive - Vinyl Products	First Floor Office 011
Presumed	Safe - No Access Gained	First Floor Office 012
Presumed	Toilet Seat - PVC / Reinforced Plastics	First Floor Ladies WC 013
Presumed	Electrical Panels - Woven Product	First Floor Corridor 014
Previously Sampled	Floor Tiles and Adhesive - Vinyl Products	First Floor Medical Room 036
Previously Sampled	Wall Panels - Cement Product	Second Floor Bedroom Cupboard 033
Previously Sampled	Floor Tiles and Adhesive - Vinyl Products	Second Floor Bedroom and Cupboard 034
Previously Sampled	Ceiling Panel of Cupboard - Insulating Board	Second Floor Bedroom Cupboard 035
Strongly Presumed	Soffits - Insulating Board	External Roof 027
Previously Sampled	Downpipes - Cement Product	External Garages 028
Previously Sampled	Guttering - Cement Product	External Garages 029
Previously Sampled	Roof Sheet Debris - Cement Product	External Garages 030
Previously Sampled	Profiled Roof Sheets - Cement Product	External Garages 031
Previously Sampled	Roof Edging - Cement Product	External Garages 032

The presence of asbestos in these areas cannot be ascertained at this time. If any works are to be carried out in these areas in the future, then these works should be approached cautiously.

Document Name	Author	Issued by	Revision Number	Issue Date	Page No
2022	David Kelly	Armour AS	0	28/04/2022	5



In accordance with current legislation, any suspect materials encountered in these areas are to be assumed to contain asbestos until proven otherwise. This will normally involve cessation of works in the affected area.

Document Name	Author	Issued by	Revision Number	Issue Date	Page No
2022	David Kelly	Armour AS	0	28/04/2022	6

Section 3: Site Description & Survey Information

Brief description on the general building construction

Brick and block construction with a pitched tiled roof.

Caveat for no access areas

No access within live electrics.
No access to inspect high level roof areas.

EXTERNAL MATERIALS

Roof Type	Pitched
Roof Materials	Roof Tiles, Profiled Cement, Profiled Metal
Soffits	Plastic, Presumed Asbestos Above
Fascia	Timber, Plastic
Walls	Brick
Verge Under cloaking	N/A
Guttering	Cement, Plastic
Downpipes	Cement, Plastic
Window/Door frames	Metal, uPVC
Other Materials	N/A

INTERNAL MATERIALS

Loft Insulation	Fiberglass
Roof Underlining	N/A
Ceilings	Concrete, Plasterboard
Walls <i>Internal</i>	Brick, Plasterboard
Floors	Carpet, Concrete, Tiles, Lino
Doors/Frames	Timber, Asbestos Insulation Board
Pipework/Insulation	MMMF
Boxings	Plasterboard, Timber
Boiler Make	Modern
Flue Pipes	Metal
Storage Heaters	Radiators
Electrical Boxes/Machinery	No Access
Ducting/Risers	Metal
Stairs	Concrete
Lift Shafts	N/A
Other Materials	N/A

Document Name	Author	Issued by	Revision Number	Issue Date	Page No
2022	David Kelly	Armour AS	0	28/04/2022	7

Section 4: Positive, Presumed or No Access Items

Item No:	1	Sample No:	N/A
Location:	First Floor - Officer's Lounge 001		



Material Description:	Panel to Top of Fireplace - Cement Product	
Identification:	Previously Sampled - Asbestos Detected	
Approx. quantity:	1 m ²	
Accessibility	Medium	Assessment Score
Product type:	Cement	1
Extent of Damage:	Slight / minor damage	1
Surface Treatment:	Unsealed Cement	1
Asbestos type:	Chrysotile	1
Material Assessment Score:		4
Risk Assessment Score:		Negligible
Action:	Encapsulate	
Comments:	Previously sampled ref: Armour 18/6/19 Sample DK/1. Minor encapsulation required where panel is screwed in.	

Document Name	Author	Issued by	Revision Number	Issue Date	Page No
2022	David Kelly	Armour AS	0	28/04/2022	8

Item No: 2

Sample No: N/A

Location: First Floor - Officer's Lounge 002



Material Description:	Floor Tiles and Adhesive - Vinyl Products	
Identification:	Previously Sampled - Asbestos Detected	
Approx. quantity:	50 m ²	
Accessibility	Difficult	<i>Assessment Score</i>
Product type:	Vinyl	1
Extent of Damage:	Slight / minor damage	1
Surface Treatment:	Non-friable	0
Asbestos type:	Chrysotile	1
Material Assessment Score:		3
Risk Assessment Score:		Negligible
Action:	Manage	
Comments:	Previously sampled ref: Armour 18/6/19 Sample DK/2. Under carpet	

Document Name	Author	Issued by	Revision Number	Issue Date	Page No
2022	David Kelly	Armour AS	0	28/04/2022	9

Item No: 3 **Sample No:** N/A

Location: First Floor - WC's x 2 003

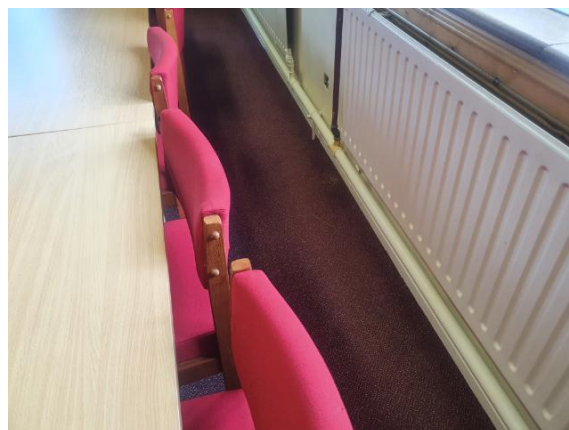


Material Description:	Toilet Seats - PVC / Reinforced Plastics	
Identification:	Presumed to Contain Asbestos	
Approx. quantity:	2 no	
Accessibility	Easy	<i>Assessment Score</i>
Product type:	Bakelite	1
Extent of Damage:	Major damage	3
Surface Treatment:	Unsealed Insulation	3
Asbestos type:	Chrysotile	1
Material Assessment Score:		8
Risk Assessment Score:		Medium
Action:	Manage	
Comments:	Not possible to sample as may damage integrity of the seats - Low damage	

Document Name	Author	Issued by	Revision Number	Issue Date	Page No
2022	David Kelly	Armour AS	0	28/04/2022	10

Item No: 4 **Sample No:** N/A

Location: First Floor - Conference Room 004



Material Description:	Floor Tiles and Adhesive - Vinyl Products	
Identification:	Previously Sampled - Asbestos Detected	
Approx. quantity:	49 m ²	
Accessibility	Difficult	<i>Assessment Score</i>
Product type:	Vinyl	1
Extent of Damage:	Slight / minor damage	1
Surface Treatment:	Non-friable	0
Asbestos type:	Chrysotile	1
Material Assessment Score:		3
Risk Assessment Score:		Negligible
Action:	Manage	
Comments:	Previously sampled ref: Armour 18/6/19 Sample DK/4. Under carpet	

Document Name	Author	Issued by	Revision Number	Issue Date	Page No
2022	David Kelly	Armour AS	0	28/04/2022	11

Item No: 5 **Sample No:** N/A

Location: First Floor - The Harding Room 005



Material Description:	Floor Tiles and Adhesive - Vinyl Products	
Identification:	Previously Sampled - Asbestos Detected	
Approx. quantity:	30 m ²	
Accessibility	Difficult	<i>Assessment Score</i>
Product type:	Vinyl	1
Extent of Damage:	Slight / minor damage	1
Surface Treatment:	Non-friable	0
Asbestos type:	Chrysotile	1
Material Assessment Score:		3
Risk Assessment Score:		Negligible
Action:	Manage	
Comments:	Previously sampled ref: Armour 18/6/19 Sample DK/6. Under carpet	

Document Name	Author	Issued by	Revision Number	Issue Date	Page No
2022	David Kelly	Armour AS	0	28/04/2022	12

Item No: 6 **Sample No:** N/A

Location: First Floor - Corridor 006



Material Description:	Door Panel and Door Infill Panels - Insulating Board	
Identification:	Previously Sampled - Asbestos Detected	
Approx. quantity:	3 no	
Accessibility	Easy	<i>Assessment Score</i>
Product type:	Asbestos Insulating Board	2
Extent of Damage:	Slight / minor damage	1
Surface Treatment:	Encapsulated AIB	1
Asbestos type:	Amosite	2
Material Assessment Score:		6
Risk Assessment Score:		Low
Action:	Manage	
Comments:	Previously sampled ref: Armour 18/6/19 Sample DK/7. 3no panels	

Document Name	Author	Issued by	Revision Number	Issue Date	Page No
2022	David Kelly	Armour AS	0	28/04/2022	13

Item No: 7 **Sample No:** N/A

Location: First Floor - Loft Space 007

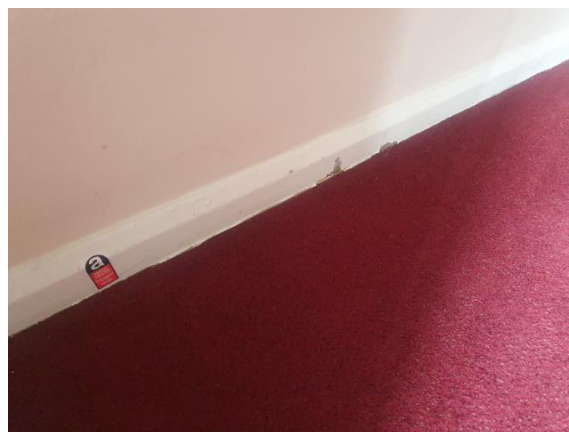
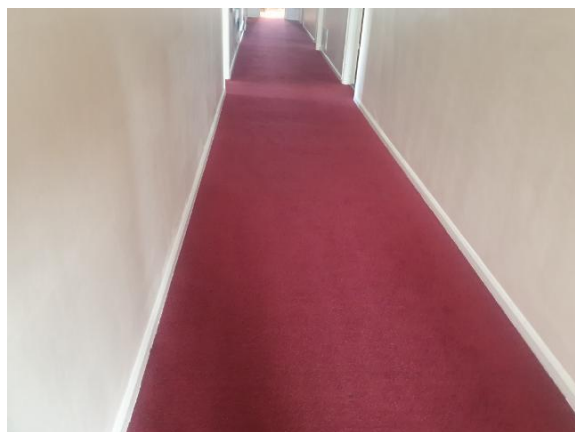


Material Description:	Panel to Door - Insulating Board	
Identification:	Presumed to Contain Asbestos	
Approx. quantity:	1 m ²	
Accessibility	Difficult	<i>Assessment Score</i>
Product type:	Asbestos Insulating Board	2
Extent of Damage:	Major damage	3
Surface Treatment:	Unsealed Insulation	3
Asbestos type:	Amosite, Chrysotile	2
Material Assessment Score:		10
Risk Assessment Score:		High
Action:	Manage	
Comments:	No safe access to inspect/sample panel. Limited access possible in loft space throughout - Apply caution	

Document Name	Author	Issued by	Revision Number	Issue Date	Page No
2022	David Kelly	Armour AS	0	28/04/2022	14

Item No: 8 **Sample No:** N/A

Location: First Floor - Corridor 008



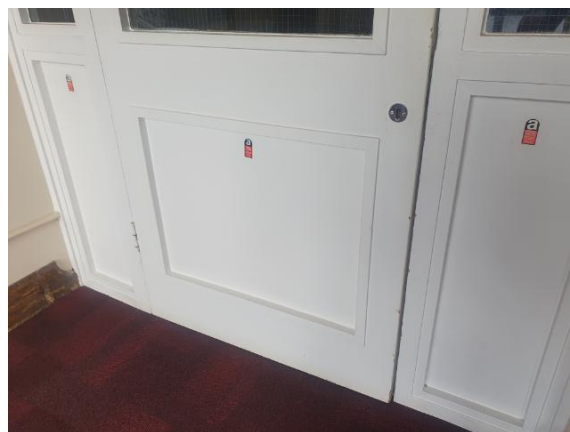
Material Description:	Floor Tiles and Adhesive - Vinyl Products	
Identification:	Previously Sampled - Asbestos Detected	
Approx. quantity:	22 m ²	
Accessibility	Difficult	<i>Assessment Score</i>
Product type:	Vinyl	1
Extent of Damage:	Slight / minor damage	1
Surface Treatment:	Non-friable	0
Asbestos type:	Chrysotile	1
Material Assessment Score:		3
Risk Assessment Score:		Negligible
Action:	Manage	
Comments:	Previously sampled ref: Armour 18/6/19 Sample DK/6. Under carpet	

Document Name	Author	Issued by	Revision Number	Issue Date	Page No
2022	David Kelly	Armour AS	0	28/04/2022	15

Item No: 9

Sample No: N/A

Location: First Floor - Landing 009



Material Description:	Door Panel and Door Infill Panels - Insulating Board	
Identification:	Previously Sampled - Asbestos Detected	
Approx. quantity:	3 no	
Accessibility	Easy	<i>Assessment Score</i>
Product type:	Asbestos Insulating Board	2
Extent of Damage:	Slight / minor damage	1
Surface Treatment:	Encapsulated AIB	1
Asbestos type:	Amosite	2
Material Assessment Score:		6
Risk Assessment Score:		Low
Action:	Manage	
Comments:	Previously sampled ref: Armour 18/6/19 Sample DK/7. 3no panels	

Document Name	Author	Issued by	Revision Number	Issue Date	Page No
2022	David Kelly	Armour AS	0	28/04/2022	16

Item No: 10

Sample No: N/A

Location: First Floor - Office 010



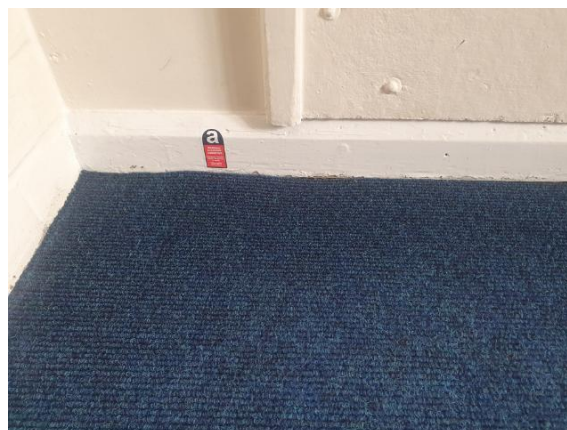
Material Description:	Floor Tiles and Adhesive - Vinyl Products	
Identification:	Previously Sampled - Asbestos Detected	
Approx. quantity:	16 m ²	
Accessibility	Difficult	<i>Assessment Score</i>
Product type:	Vinyl	1
Extent of Damage:	Slight / minor damage	1
Surface Treatment:	Non-friable	0
Asbestos type:	Chrysotile	1
Material Assessment Score:		3
Risk Assessment Score:		Negligible
Action:	Manage	
Comments:	Previously sampled ref: Armour 18/6/19 Sample DK/6. Under carpet	

Document Name	Author	Issued by	Revision Number	Issue Date	Page No
2022	David Kelly	Armour AS	0	28/04/2022	17

Item No: 11

Sample No: N/A

Location: First Floor - Office 011



Material Description:	Floor Tiles and Adhesive - Vinyl Products	
Identification:	Previously Sampled - Asbestos Detected	
Approx. quantity:	16 m ²	
Accessibility	Difficult	<i>Assessment Score</i>
Product type:	Vinyl	1
Extent of Damage:	Slight / minor damage	1
Surface Treatment:	Non-friable	0
Asbestos type:	Chrysotile	1
Material Assessment Score:		3
Risk Assessment Score:		Negligible
Action:	Manage	
Comments:	Previously sampled ref: Armour 18/6/19 Sample DK/6. Under carpet. No access within boxing within room	

Document Name	Author	Issued by	Revision Number	Issue Date	Page No
2022	David Kelly	Armour AS	0	28/04/2022	18

Item No: 12

Sample No: N/A

Location: First Floor - Office 012



Material Description:	Safe - No Access Gained	
Identification:	Presumed to Contain Asbestos	
Approx. quantity:	1 no	
Accessibility	Difficult	<i>Assessment Score</i>
Product type:	Asbestos Insulating Board	2
Extent of Damage:	Major damage	3
Surface Treatment:	Unsealed Insulation	3
Asbestos type:	Amosite, Chrysotile	2
Material Assessment Score:		10
Risk Assessment Score:		High
Action:	Manage	
Comments:	No access within safe. Asbestos panels can sometimes be found within the lining of the safe, although this is not accessible through normal use.	

Document Name	Author	Issued by	Revision Number	Issue Date	Page No
2022	David Kelly	Armour AS	0	28/04/2022	19

Item No: 13

Sample No: N/A

Location: First Floor - Ladies WC 013



Material Description:	Toilet Seat - PVC / Reinforced Plastics	
Identification:	Presumed to Contain Asbestos	
Approx. quantity:	1 no	
Accessibility	Easy	<i>Assessment Score</i>
Product type:	Bakelite	1
Extent of Damage:	Major damage	3
Surface Treatment:	Unsealed Insulation	3
Asbestos type:	Chrysotile	1
Material Assessment Score:		8
Risk Assessment Score:		Medium
Action:	Manage	
Comments:	Not possible to sample as may damage integrity of the seat - Low damage	

Document Name	Author	Issued by	Revision Number	Issue Date	Page No
2022	David Kelly	Armour AS	0	28/04/2022	20

Item No: 14

Sample No: N/A

Location: First Floor - Corridor 014



Material Description:	Electrical Panels - Woven Product	
Identification:	Presumed to Contain Asbestos	
Approx. quantity:	2 no	
Accessibility	Difficult	<i>Assessment Score</i>
Product type:	Rope	2
Extent of Damage:	Major damage	3
Surface Treatment:	Unsealed Insulation	3
Asbestos type:	Chrysotile	1
Material Assessment Score:		9
Risk Assessment Score:		N/A
Action:	Manage	
Comments:	Presumed flashguards or rope within live electrical boxes.	

Document Name	Author	Issued by	Revision Number	Issue Date	Page No
2022	David Kelly	Armour AS	0	28/04/2022	21

Item No: 16

Sample No: N/A

Location: Ground Floor - WC 016



Material Description:	Pipe Sleeve in Wall - Cement Product	
Identification:	Previously Sampled - Asbestos Detected	
Approx. quantity:	<1 m ²	
Accessibility	Difficult	Assessment Score
Product type:	Cement	1
Extent of Damage:	Slight / minor damage	1
Surface Treatment:	Unsealed Cement	1
Asbestos type:	Chrysotile	1
Material Assessment Score:		4
Risk Assessment Score:		Negligible
Action:	Encapsulate	
Comments:	Previously sampled ref: Armour 18/6/19 Sample DK/9. Under carpet	

Document Name	Author	Issued by	Revision Number	Issue Date	Page No
2022	David Kelly	Armour AS	0	28/04/2022	22

Item No: 17

Sample No: N/A

Location: Ground Floor - Changing Room 017



Material Description:	Toilet Seats - PVC / Reinforced Plastics	
Identification:	Presumed to Contain Asbestos	
Approx. quantity:	2 no	
Accessibility	Easy	<i>Assessment Score</i>
Product type:	Bakelite	1
Extent of Damage:	Major damage	3
Surface Treatment:	Unsealed Insulation	3
Asbestos type:	Chrysotile	1
Material Assessment Score:		8
Risk Assessment Score:		Medium
Action:	Manage	
Comments:	Not possible to sample as may damage integrity of the seats - Low damage	

Document Name	Author	Issued by	Revision Number	Issue Date	Page No
2022	David Kelly	Armour AS	0	28/04/2022	23

Item No: 18

Sample No: N/A

Location: Ground Floor - Offices x 2 018



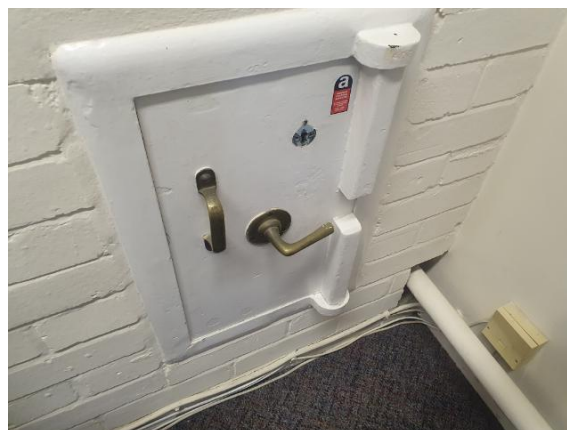
Material Description:	Floor Tiles and Adhesive - Vinyl Products	
Identification:	Previously Sampled - Asbestos Detected	
Approx. quantity:	28 m ²	
Accessibility	Difficult	Assessment Score
Product type:	Vinyl	1
Extent of Damage:	Slight / minor damage	1
Surface Treatment:	Non-friable	0
Asbestos type:	Chrysotile	1
Material Assessment Score:		3
Risk Assessment Score:		Negligible
Action:	Manage	
Comments:	Previously sampled ref: Armour 18/6/19 Sample DK/10. Under carpets.	

Document Name	Author	Issued by	Revision Number	Issue Date	Page No
2022	David Kelly	Armour AS	0	28/04/2022	24

Item No: 19

Sample No: N/A

Location: Ground Floor - Office 019



Material Description:	Safe - No Access Gained	
Identification:	Presumed to Contain Asbestos	
Approx. quantity:	1 no	
Accessibility	Difficult	<i>Assessment Score</i>
Product type:	Asbestos Insulating Board	2
Extent of Damage:	Major damage	3
Surface Treatment:	Unsealed Insulation	3
Asbestos type:	Amosite, Chrysotile	2
Material Assessment Score:		10
Risk Assessment Score:		High
Action:	Manage	
Comments:	No access within safe. Asbestos panels can sometimes be found within the lining of the safe, although this is not accessible through normal use.	

Document Name	Author	Issued by	Revision Number	Issue Date	Page No
2022	David Kelly	Armour AS	0	28/04/2022	25

Item No: 20

Sample No: N/A

Location: Ground Floor - Offices x 2 020



Material Description:	Floor Tiles and Adhesive - Vinyl Products	
Identification:	Previously Sampled - Asbestos Detected	
Approx. quantity:	22 m ²	
Accessibility	Difficult	Assessment Score
Product type:	Vinyl	1
Extent of Damage:	Slight / minor damage	1
Surface Treatment:	Non-friable	0
Asbestos type:	Chrysotile	1
Material Assessment Score:		3
Risk Assessment Score:		Negligible
Action:	Manage	
Comments:	Previously sampled ref: Armour 18/6/19 Sample DK/10. Under carpets.	

Document Name	Author	Issued by	Revision Number	Issue Date	Page No
2022	David Kelly	Armour AS	0	28/04/2022	26

Item No: 21

Sample No: N/A

Location: Ground Floor - Offices x 2 021



Material Description:	Floor Tiles and Adhesive - Vinyl Products	
Identification:	Previously Sampled - Asbestos Detected	
Approx. quantity:	30 m ²	
Accessibility	Difficult	Assessment Score
Product type:	Vinyl	1
Extent of Damage:	Slight / minor damage	1
Surface Treatment:	Non-friable	0
Asbestos type:	Chrysotile	1
Material Assessment Score:		3
Risk Assessment Score:		Negligible
Action:	Manage	
Comments:	Previously sampled ref: Armour 18/6/19 Sample DK/10. Under carpets.	

Document Name	Author	Issued by	Revision Number	Issue Date	Page No
2022	David Kelly	Armour AS	0	28/04/2022	27

Item No: 22

Sample No: N/A

Location: Ground Floor - Offices x 2 022



Material Description:	Safes x 2 - No Access Gained	
Identification:	Presumed to Contain Asbestos	
Approx. quantity:	1 no	
Accessibility	Difficult	<i>Assessment Score</i>
Product type:	Asbestos Insulating Board	2
Extent of Damage:	Major damage	3
Surface Treatment:	Unsealed Insulation	3
Asbestos type:	Amosite, Chrysotile	2
Material Assessment Score:		10
Risk Assessment Score:		High
Action:	Manage	
Comments:	No access within safe. Asbestos panels can sometimes be found within the lining of the safe, although this is not accessible through normal use.	

Document Name	Author	Issued by	Revision Number	Issue Date	Page No
2022	David Kelly	Armour AS	0	28/04/2022	28

Item No: 23

Sample No: N/A

Location: Ground Floor - Offices x 3 023



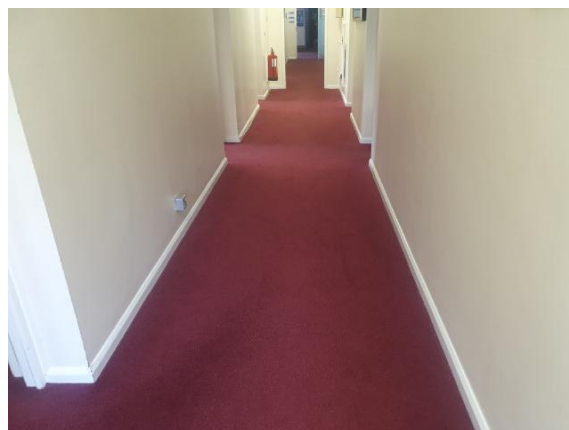
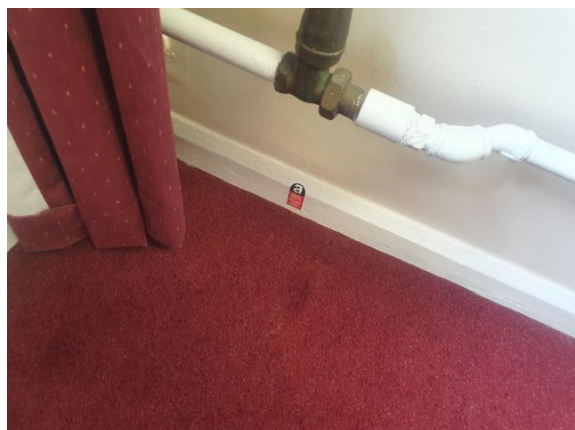
Material Description:	Floor Tiles and Adhesive - Vinyl Products	
Identification:	Previously Sampled - Asbestos Detected	
Approx. quantity:	40 m ²	
Accessibility	Difficult	<i>Assessment Score</i>
Product type:	Vinyl	1
Extent of Damage:	Slight / minor damage	1
Surface Treatment:	Non-friable	0
Asbestos type:	Chrysotile	1
Material Assessment Score:		3
Risk Assessment Score:		Negligible
Action:	Manage	
Comments:	Previously sampled ref: Armour 18/6/19 Sample DK/10. Under carpets.	

Document Name	Author	Issued by	Revision Number	Issue Date	Page No
2022	David Kelly	Armour AS	0	28/04/2022	29

Item No: 24

Sample No: N/A

Location: Ground Floor - Corridor 024



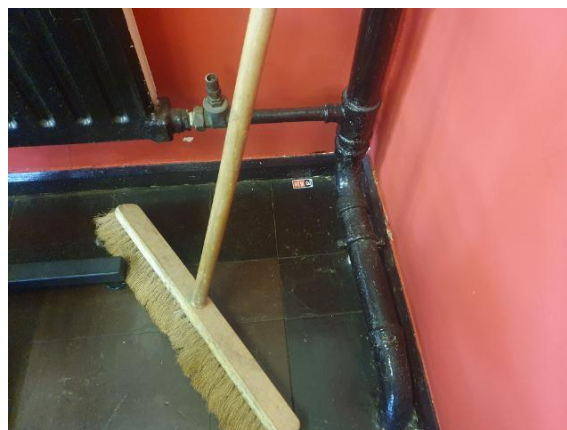
Material Description:	Floor Tiles and Adhesive - Vinyl Products	
Identification:	Previously Sampled - Asbestos Detected	
Approx. quantity:	30 m ²	
Accessibility	Difficult	<i>Assessment Score</i>
Product type:	Vinyl	1
Extent of Damage:	Slight / minor damage	1
Surface Treatment:	Non-friable	0
Asbestos type:	Chrysotile	1
Material Assessment Score:		3
Risk Assessment Score:		Negligible
Action:	Manage	
Comments:	Previously sampled ref: Armour 18/6/19 Sample DK/10. Under carpets.	

Document Name	Author	Issued by	Revision Number	Issue Date	Page No
2022	David Kelly	Armour AS	0	28/04/2022	30

Item No: 25

Sample No: N/A

Location: Ground Floor - Stage/Gym 025



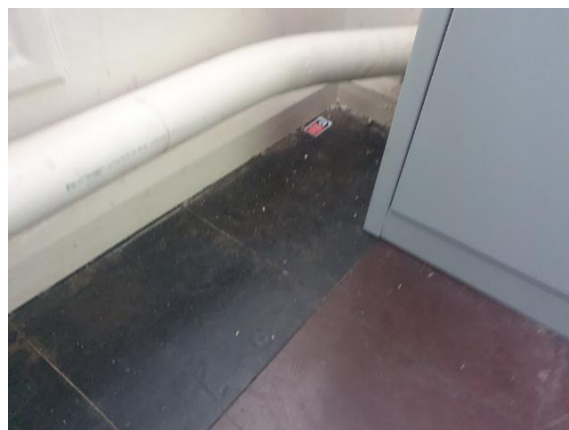
Material Description:	Floor Tiles and Adhesive - Vinyl Products	
Identification:	Previously Sampled - Asbestos Detected	
Approx. quantity:	50 m ²	
Accessibility	Easy	<i>Assessment Score</i>
Product type:	Vinyl	1
Extent of Damage:	Slight / minor damage	1
Surface Treatment:	Non-friable	0
Asbestos type:	Chrysotile	1
Material Assessment Score:		3
Risk Assessment Score:		Negligible
Action:	Manage	
Comments:	Previously sampled ref: Armour 18/6/19 Sample DK/11. Several areas of minor damage but risk remains low	

Document Name	Author	Issued by	Revision Number	Issue Date	Page No
2022	David Kelly	Armour AS	0	28/04/2022	31

Item No: 26

Sample No: N/A

Location: Ground Floor - Cadet Locker Room 026



Material Description:	Floor Tiles and Adhesive - Vinyl Products	
Identification:	Previously Sampled - Asbestos Detected	
Approx. quantity:	18 m ²	
Accessibility	Easy	<i>Assessment Score</i>
Product type:	Vinyl	1
Extent of Damage:	Slight / minor damage	1
Surface Treatment:	Non-friable	0
Asbestos type:	Chrysotile	1
Material Assessment Score:		3
Risk Assessment Score:		Negligible
Action:	Manage	
Comments:	Previously sampled ref: Armour 18/6/19 Sample DK/10.	

Document Name	Author	Issued by	Revision Number	Issue Date	Page No
2022	David Kelly	Armour AS	0	28/04/2022	32

Item No: 27 **Sample No:** N/A

Location: External - Roof 027



Material Description:	Soffits - Insulating Board	
Identification:	Strongly Presumed to Contain Asbestos	
Approx. quantity:	110 LM	
Accessibility	Difficult	Assessment Score
Product type:	Asbestos Insulating Board	2
Extent of Damage:	Slight / minor damage	1
Surface Treatment:	Encapsulated AIB	1
Asbestos type:	Amosite, Chrysotile	2
Material Assessment Score:		6
Risk Assessment Score:		Low
Action:	Manage	
Comments:	No access above plastic soffit boards due to height restrictions	

Document Name	Author	Issued by	Revision Number	Issue Date	Page No
2022	David Kelly	Armour AS	0	28/04/2022	33

Item No: 28

Sample No: N/A

Location: External - Garages 028



Material Description:	Downpipes - Cement Product	
Identification:	Previously Sampled - Asbestos Detected	
Approx. quantity:	18 LM	
Accessibility	Medium	<i>Assessment Score</i>
Product type:	Cement	1
Extent of Damage:	Moderate damage	2
Surface Treatment:	Unsealed Cement	1
Asbestos type:	Chrysotile	1
Material Assessment Score:		5
Risk Assessment Score:		Low
Action:	Manage	
Comments:	Previously sampled ref: Armour 18/6/19 Sample DK/12. 3no pipes	

Document Name	Author	Issued by	Revision Number	Issue Date	Page No
2022	David Kelly	Armour AS	0	28/04/2022	34

Item No: 29

Sample No: N/A

Location: External - Garages 029



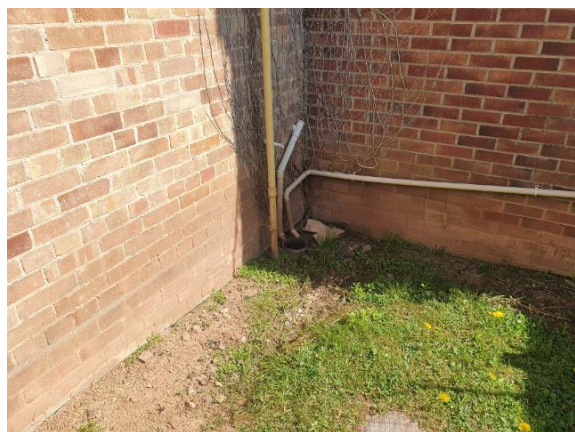
Material Description:	Guttering - Cement Product	
Identification:	Previously Sampled - Asbestos Detected	
Approx. quantity:	60 LM	
Accessibility	Difficult	<i>Assessment Score</i>
Product type:	Cement	1
Extent of Damage:	Slight / minor damage	1
Surface Treatment:	Unsealed Cement	1
Asbestos type:	Chrysotile	1
Material Assessment Score:		4
Risk Assessment Score:		Negligible
Action:	Manage	
Comments:	Previously sampled ref: Armour 18/6/19 Sample DK/12.	

Document Name	Author	Issued by	Revision Number	Issue Date	Page No
2022	David Kelly	Armour AS	0	28/04/2022	35

Item No: 30

Sample No: N/A

Location: External - Garages 030



Material Description:	Roof Sheet Debris - Cement Product	
Identification:	Previously Sampled - Asbestos Detected	
Approx. quantity:	<1 m ²	
Accessibility	Easy	<i>Assessment Score</i>
Product type:	Cement	1
Extent of Damage:	Moderate damage	2
Surface Treatment:	Unsealed Cement	1
Asbestos type:	Chrysotile	1
Material Assessment Score:		5
Risk Assessment Score:		Low
Action:	Remove	
Comments:	Previously sampled ref: Armour 18/6/19 Sample DK/19.	

Document Name	Author	Issued by	Revision Number	Issue Date	Page No
2022	David Kelly	Armour AS	0	28/04/2022	36

Item No: 31

Sample No: N/A

Location: External - Garages 031



Material Description:	Profiled Roof Sheets - Cement Product	
Identification:	Previously Sampled - Asbestos Detected	
Approx. quantity:	200 m ²	
Accessibility	Difficult	<i>Assessment Score</i>
Product type:	Cement	1
Extent of Damage:	Slight / minor damage	1
Surface Treatment:	Unsealed Cement	1
Asbestos type:	Chrysotile	1
Material Assessment Score:		4
Risk Assessment Score:		Negligible
Action:	Remove	
Comments:	Previously sampled ref: Armour 18/6/19 Sample DK/19.	

Document Name	Author	Issued by	Revision Number	Issue Date	Page No
2022	David Kelly	Armour AS	0	28/04/2022	37

Item No: 32

Sample No: N/A

Location: External - Garages 032



Material Description:	Roof Edging - Cement Product	
Identification:	Previously Sampled - Asbestos Detected	
Approx. quantity:	10 LM	
Accessibility	Difficult	<i>Assessment Score</i>
Product type:	Cement	1
Extent of Damage:	Slight / minor damage	1
Surface Treatment:	Unsealed Cement	1
Asbestos type:	Chrysotile	1
Material Assessment Score:		4
Risk Assessment Score:		Negligible
Action:	Remove	
Comments:	Previously sampled ref: Armour 18/6/19 Sample DK/19.	

Document Name	Author	Issued by	Revision Number	Issue Date	Page No
2022	David Kelly	Armour AS	0	28/04/2022	38

Item No: 33

Sample No: N/A

Location: Second Floor - Bedroom Cupboard 033



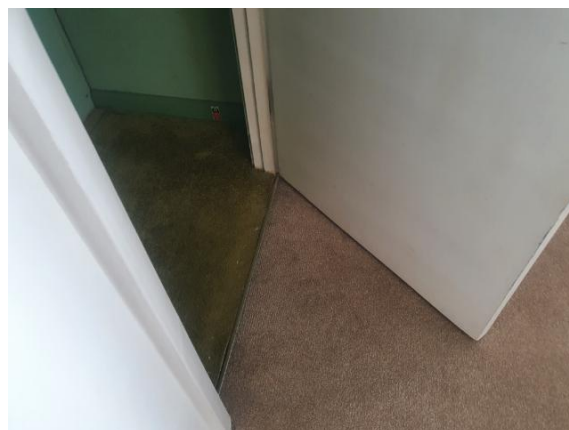
Material Description:	Wall Panels - Cement Product	
Identification:	Previously Sampled - Asbestos Detected	
Approx. quantity:	3 m ²	
Accessibility	Medium	Assessment Score
Product type:	Cement	1
Extent of Damage:	Slight / minor damage	1
Surface Treatment:	Unsealed Cement	1
Asbestos type:	Chrysotile	1
Material Assessment Score:		4
Risk Assessment Score:		Negligible
Action:	Manage	
Comments:	Previously sampled ref: Armour 18/6/19 Sample DK/13. Entire back wall of cupboard	

Document Name	Author	Issued by	Revision Number	Issue Date	Page No
2022	David Kelly	Armour AS	0	28/04/2022	39

Item No: 34

Sample No: N/A

Location: Second Floor - Bedroom and Cupboard 034



Material Description:	Floor Tiles and Adhesive - Vinyl Products	
Identification:	Previously Sampled - Asbestos Detected	
Approx. quantity:	9 m ²	
Accessibility	Difficult	<i>Assessment Score</i>
Product type:	Vinyl	1
Extent of Damage:	Slight / minor damage	1
Surface Treatment:	Non-friable	0
Asbestos type:	Chrysotile	1
Material Assessment Score:		3
Risk Assessment Score:		Negligible
Action:	Manage	
Comments:	Previously sampled ref: Armour 18/6/19 Sample DK/14. Under carpet	

Document Name	Author	Issued by	Revision Number	Issue Date	Page No
2022	David Kelly	Armour AS	0	28/04/2022	40

Item No: 35

Sample No: N/A

Location: Second Floor - Bedroom Cupboard 035



Material Description:	Ceiling Panel of Cupboard - Insulating Board	
Identification:	Previously Sampled - Asbestos Detected	
Approx. quantity:	2 m ²	
Accessibility	Difficult	Assessment Score
Product type:	Asbestos Insulating Board	2
Extent of Damage:	Slight / minor damage	1
Surface Treatment:	Encapsulated AIB	1
Asbestos type:	Amosite	2
Material Assessment Score:		6
Risk Assessment Score:		Low
Action:	Encapsulate	
Comments:	Previously sampled ref: GU/TA/001/17. 2no holes in panel require encapsulation. Do not remove wires	

Document Name	Author	Issued by	Revision Number	Issue Date	Page No
2022	David Kelly	Armour AS	0	28/04/2022	41

Item No: 36

Sample No: N/A

Location: First Floor - Medical Room 036



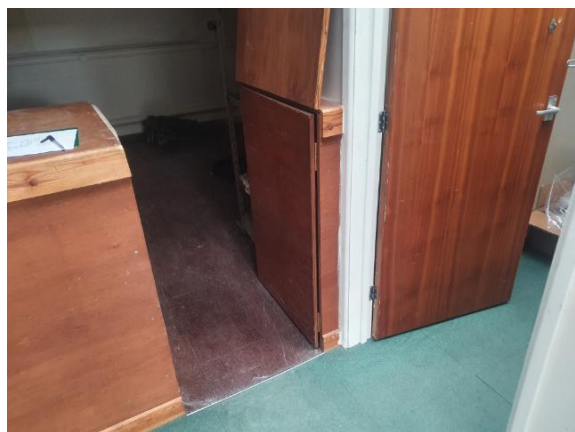
Material Description:	Floor Tiles and Adhesive - Vinyl Products	
Identification:	Previously Sampled - Asbestos Detected	
Approx. quantity:	15 m ²	
Accessibility	Difficult	<i>Assessment Score</i>
Product type:	Vinyl	1
Extent of Damage:	Slight / minor damage	1
Surface Treatment:	Non-friable	0
Asbestos type:	Chrysotile	1
Material Assessment Score:		3
Risk Assessment Score:		Negligible
Action:	Manage	
Comments:	Previously sampled ref: Armour 18/6/19 Sample DK/6. Under carpet	

Document Name	Author	Issued by	Revision Number	Issue Date	Page No
2022	David Kelly	Armour AS	0	28/04/2022	42

Item No: 37

Sample No: N/A

Location: Ground Floor - Signal Store and Cupboard 037



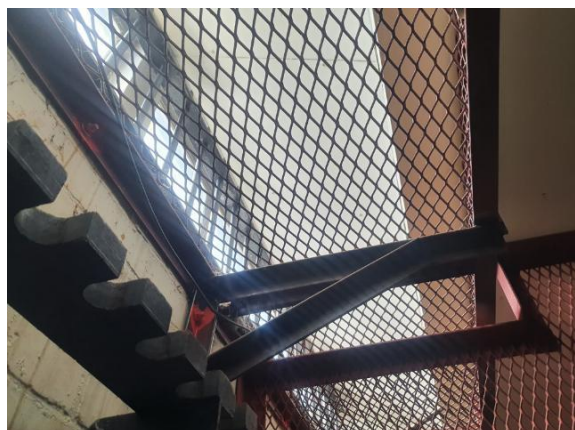
Material Description:	Floor Tiles and Adhesive - Vinyl Products	
Identification:	Previously Sampled - Asbestos Detected	
Approx. quantity:	30 m ²	
Accessibility	Easy	<i>Assessment Score</i>
Product type:	Vinyl	1
Extent of Damage:	Moderate damage	2
Surface Treatment:	Non-friable	0
Asbestos type:	Chrysotile	1
Material Assessment Score:		4
Risk Assessment Score:		Negligible
Action:	Manage	
Comments:	Previously sampled ref: Armour 18/6/19 Sample DK/10. Partially under carpet. Tiles damaged in two areas, but risk remains low	

Document Name	Author	Issued by	Revision Number	Issue Date	Page No
2022	David Kelly	Armour AS	0	28/04/2022	43

Item No: 38

Sample No: N/A

Location: Ground Floor - Armoury 038

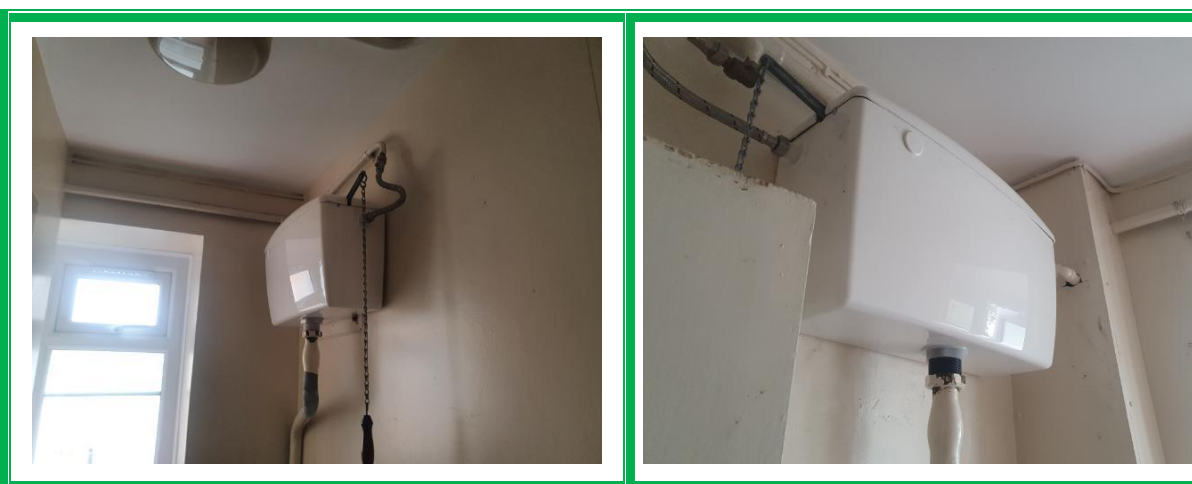


Material Description:	Panels above Cage - Insulating Board	
Identification:	Presumed to Contain Asbestos	
Approx. quantity:	6 LM	
Accessibility	Difficult	<i>Assessment Score</i>
Product type:	Asbestos Insulating Board	2
Extent of Damage:	Major damage	3
Surface Treatment:	Unsealed Insulation	3
Asbestos type:	Amosite, Chrysotile	2
Material Assessment Score:		10
Risk Assessment Score:		High
Action:	Manage	
Comments:	No access above cage to sample panels.	

Document Name	Author	Issued by	Revision Number	Issue Date	Page No
2022	David Kelly	Armour AS	0	28/04/2022	44

Section 5: Negative Items

Item No:	15	Sample No:	N/A
Location:	Ground Floor - Changing Room 015		



Material Description:	No Suspect Materials Found	
Identification:	N/A	
Approx. quantity:	N/A	
Accessibility	N/A	<i>Assessment Score</i>
Product type:	N/A	N/A
Extent of Damage:	N/A	N/A
Surface Treatment:	N/A	N/A
Asbestos type:	N/A	N/A
Material Assessment Score:		N/A
Priority Assessment Score:		N/A
Action:	N/A	
Comments:	Cisterns have been replaced	

Document Name	Author	Issued by	Revision Number	Issue Date	Page No
2022	David Kelly	Armour AS	0	28/04/2022	45



Section 6: Survey Objectives

Instructions were received from Kelvin Walker of Wessex RFCA to carry out a Re-Inspection asbestos survey at 675 Army Air Corps, Somerset, TA1 5LJ in accordance with HSG264 and Armour Analytical's quality procedures.

The survey was carried out on 25 April 2022 by David Kelly with the objective of facilitating a Re-Inspection report.

Document Name	Author	Issued by	Revision Number	Issue Date	Page No
2022	David Kelly	Armour AS	0	28/04/2022	46



Section 7: Survey Notes

This report has been written with reference to the various Guidance Notes etc, issued, and current at the date of this report and describes circumstances at the site on the date the investigation took place.

Where similar items exist in the building, only one or two samples may have been taken to ascertain the material content. It was assumed that similar products were of the same material.

Any person undertaking work within the buildings should be told of the presence of asbestos. This briefing also applies to any other person associated with the site, including staff, sub-contractors and others.

The drawings in the report are not to scale and are illustrative only to indicate approximate locations. The descriptions used are for location identification purposes.

All the recommendations described in this report are based upon assumptions made after consideration of the type of material, condition of the material, its location, analysis result and type of use the area is thought to be subjected to. However, statutory authorities or others could require amendments based on local knowledge, change in legislation, change in use or indeed other conditions or criteria.

Samples taken from floor tiles (or similar material) may include a bitumen adhesive as part of the sample. It is known that some proprietary brands of bitumen have an asbestos content and this will be included as an integral part of the bulk sample unless otherwise stated.

Due to the artex being non-homogenous, it is recommended to treat all areas as containing asbestos if you have a positive sample of artex.

Document Name	Author	Issued by	Revision Number	Issue Date	Page No
2022	David Kelly	Armour AS	0	28/04/2022	47

Section 8: Material Assessment Algorithm

Variable	Score	Examples
Product type	1	Vinyl, 'Bakelite', Cement, Textured Coating, Non-Friable Debris, Floor Tiles, Bitumen, Reinforced Plastics, Mastic (putty), Windowsills
	2	Asbestos Insulating Board, Paper, Rope, Burned Cement Debris, Flashguards, Gaskets
	3	Pipe Insulation, Spray Coating, Friable Debris, Loose Fill Asbestos
Condition / Damage	0	Good
	1	Slight / Minor Damage
	2	Moderate Damage – Breakage to Surface Treatment
	3	Major Damage – Smashed or Exposed Material
Surface Treatment	0	Non-Friable E.G. Vinyl
	1	Enclosed Insulation, Encapsulated AIB, Unsealed Cement, Woven Material, Paper
	2	Unsealed AIB, Encapsulated Insulation, Encapsulated Pipe Lagging
	3	Unsealed Insulation, Spray Coating, Unsealed Pipe Lagging
Asbestos Type	1	Chrysotile
	2	Amosite & Other Amphiboles
	3	Crocidolite

The scores from each of the four sections are added together to produce a risk score:

Risk score	Risk assessment
10 or more	High risk
7 – 9	Medium risk
5 – 6	Low risk
4 & below	Negligible risk

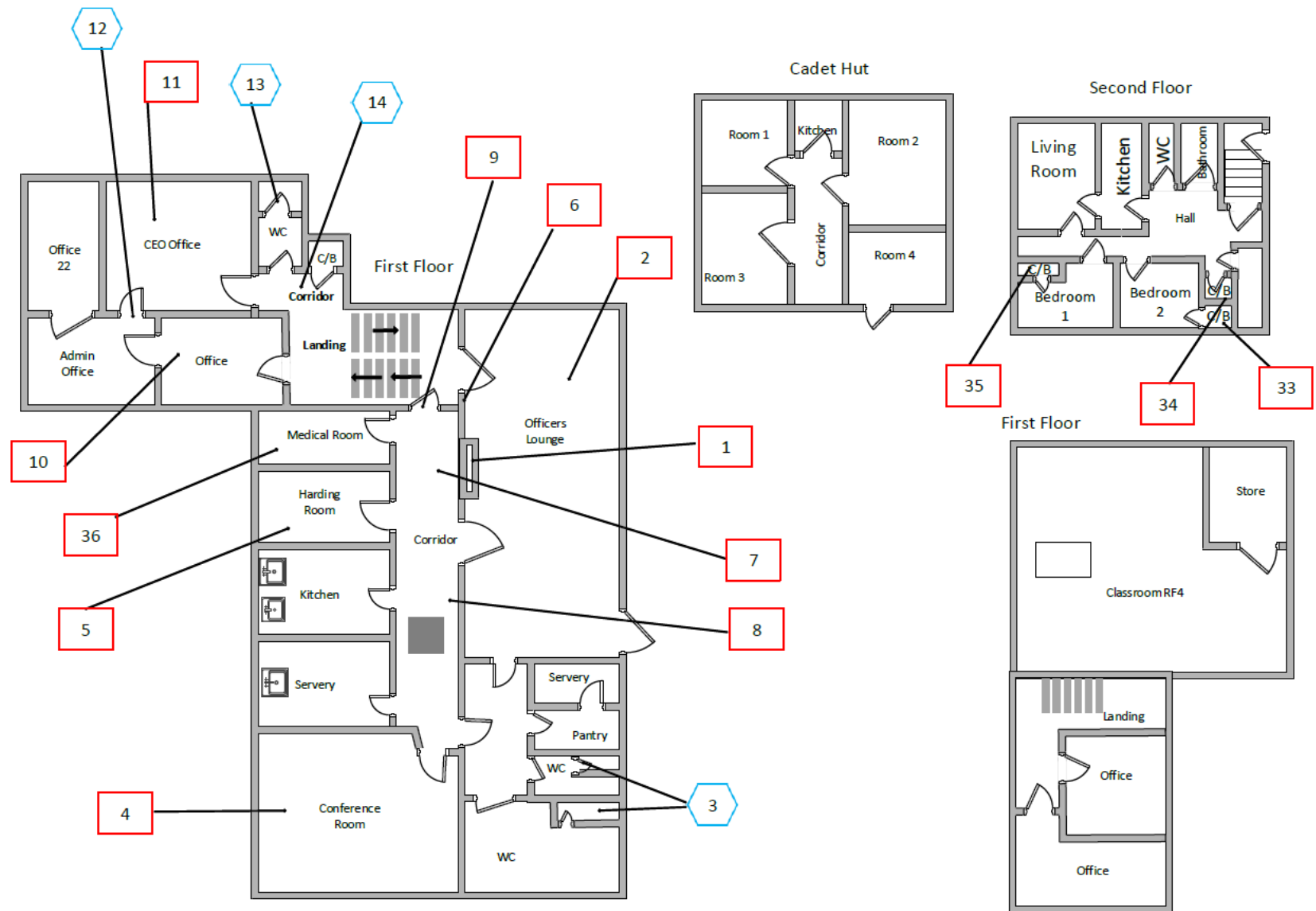


Section 9: Certificates of Bulk Analysis

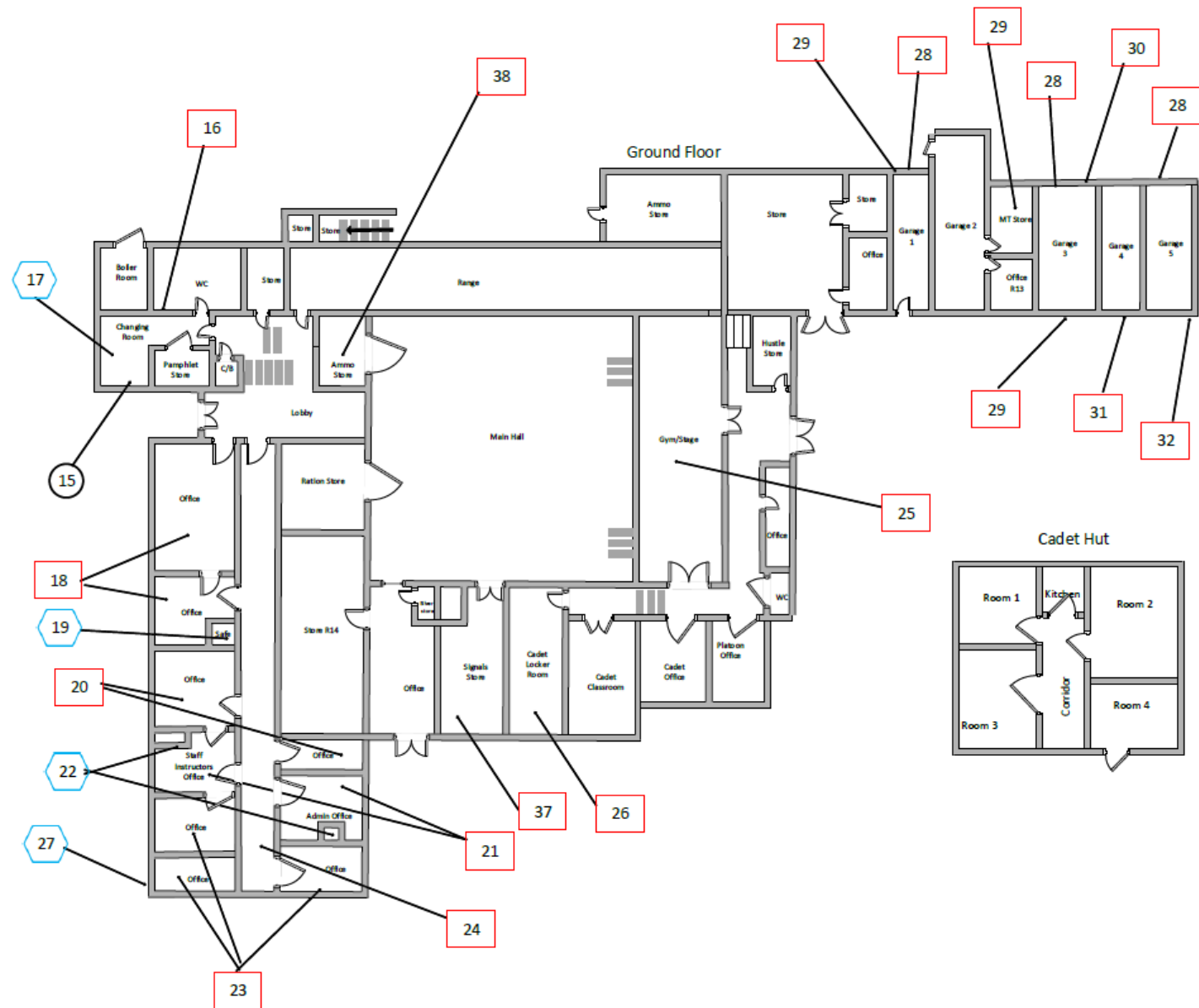
No samples were taken during this survey.

Document Name	Author	Issued by	Revision Number	Issue Date	Page No
2022	David Kelly	Armour AS	0	28/04/2022	49

Section 10: Site Plan



Document Name	Author	Issued by	Revision Number	Issue Date	Page No
2022	David Kelly	Armour AS	0	28/04/2022	50



Document Name	Author	Issued by	Revision Number	Issue Date	Page No
2022	David Kelly	Armour AS	0	28/04/2022	51



I the surveyor can confirm that this report is accurate to my findings on site and this survey has been Content checked by myself.

Checked by: David Kelly

Date: 28/04/2022

I the Admin Manager can confirm that this report is accurate to the paperwork received and this survey has been quality checked by myself.

Checked by: Andrea Bansee

Date: 28/04/2022

Report Compiled By

**Armour Analytical Services Ltd, Unit 6, Guardian Street Industrial Estate,
Warrington, WA5 1SJ**

Document Name	Author	Issued by	Revision Number	Issue Date	Page No
2022	David Kelly	Armour AS	0	28/04/2022	52