

Project Number A-00566 (3700)

**Re-Inspection
Asbestos Survey Report -Revised**

**Totnes Platoon
Totnes
Devon
TQ9 5XW**



Working in Partnership with Shield Services Group



Document Name	Author	Issued by	Revision Number	Issue Date	Page No
2021	David Kelly	Armour AS	1	22/10/2021	1

Contents

Section	
1	Contact Details
2	Executive Summary
3	Site Description & Survey Information
4	Positive, Presumed or No Access Items
5	Negative Photos Sheets
6	Survey Objectives
7	Survey Notes
8	Material Assessment Algorithm
9	Certificates of Bulk Analysis
10	Site Plan

Document Name	Author	Issued by	Revision Number	Issue Date	Page No
2021	David Kelly	Armour AS	1	22/10/2021	2



Section 1: Contact Details

Client Details:		Instructing Party:	
Wessex RFCA Mount House Mount Street Taunton TA1 3QE		Wessex RFCA Mount House Mount Street Taunton TA1 3QE	
Contact Name:	Kelvin Walker	Contact Name:	Kelvin Walker
Tel: 01823 250 116	Fax: N/A	Tel: 01823 250 116	Fax: N/A

Site Address:		Report Author:	
Totnes Platoon Totnes Devon TQ9 5XW		Armour Analytical Services Admirals Yard Station Road Bristol BS34 6LR	
Contact Name:	Kelvin Walker	Contact Name:	Andrea Bansee
Tel: 01823 250 116	Fax: N/A	Mobile: 07468 535 836	

Lead Surveyor's Name:	Lead Surveyor's Authorising Signature:
David Kelly	

Document Name	Author	Issued by	Revision Number	Issue Date	Page No
2021	David Kelly	Armour AS	1	22/10/2021	3

Section 2: Executive Summary

Sample Number	Sample Type	Location	Analysis
DK/15	Floor Tiles	Caretakers Flat – GF Lobby 015	N.A.D.I.S
DK/16	Textured Coating to Walls	Caretakers Flat – GF Lounge 016	N.A.D.I.S
DK/17	Ceiling Tiles/Fibreboard	Caretakers Flat - GF Living and Dining Room 017	N.A.D.I.S

N.A.D.I.S – No Asbestos Detected in Sample

The following items have been either been “Strongly Presumed” To Contain Asbestos or “Presumed” to Contain Asbestos as they were either visually identified in being so, labelled after previously being sampled on prior surveys or not accessible at the time of the survey:

Status	Sample Type	Location
Previously Sampled	Panel to Fireplace - Cement Product	Ground Floor Office 002
Previously Sampled	Sink Pad - Bituminous Product	Ground Floor Kitchen 003
Presumed	Incinerator Unit - No Access Gained	Ground Floor Ladies WC 005
Previously Sampled	Profiled Roof - Cement Product	Ground Floor WC's x 2 and Corridor 006
Presumed	Heaters - Insulating Board	Ground Floor Drill Hall 007
Strongly Presumed	Profiled Roof - Cement Product	Ground Floor Drill Hall 008
Previously Sampled	Panels above Fire Exit Door - Insulating Board	First Floor Corridor 001
Previously Sampled	Profiled Roof - Cement Product	First Floor Firing Range 004
Strongly Presumed	Profiled Roof - Cement Product	External Store 011
Strongly Presumed	Profiled Roof - Cement Product	External Shed 012
Strongly Presumed	Cement Tiles & Profiled Roof - Cement Product	External Main Hall 013
Strongly Presumed	Guttering - Cement Product	External Range 014

Document Name	Author	Issued by	Revision Number	Issue Date	Page No
2021	David Kelly	Armour AS	1	22/10/2021	4



The presence of asbestos in these areas cannot be ascertained at this time. If any works are to be carried out in these areas in the future, then these works should be approached cautiously.

In accordance with current legislation, any suspect materials encountered in these areas are to be assumed to contain asbestos until proven otherwise. This will normally involve cessation of works in the affected area.

Document Name	Author	Issued by	Revision Number	Issue Date	Page No
2021	David Kelly	Armour AS	1	22/10/2021	5

Section 3: Site Description & Survey Information

Brief description on the general building construction

Brick construction with a pitched tile and profiled cement roof

Caveat for no access areas

All areas accessed.

EXTERNAL MATERIALS

Roof Type	Pitched
Roof Materials	Profiled Cement, Cement Tiles, Ceramic Tiles
Soffits	Plastic
Fascia	Plastic
Walls	Brick
Verge Under cloaking	None
Guttering	Plastic, Cement
Downpipes	Plastic, Metal
Window/Door frames	UPVC
Other Materials	N/A

INTERNAL MATERIALS

Loft Insulation	Fiberglass
Roof Underlining	Non-Asbestos Felt
Ceilings	Plasterboard, Lath and Plaster
Walls <i>Internal</i>	Plasterboard, Block
Floors	Lino, Tiles, Screed, Timber
Doors/Frames	Timber
Pipework/Insulation	Copper, Armaflex
Boxings	Timber
Boiler Make	N/A
Flue Pipes	N/A
Storage Heaters	No Access Within Heaters
Electrical Boxes/Machinery	Modern
Ducting/Risers	N/A
Stairs	Concrete
Lift Shafts	N/A
Other Materials	N/A

Document Name	Author	Issued by	Revision Number	Issue Date	Page No
2021	David Kelly	Armour AS	1	22/10/2021	6

Section 4: Positive, Presumed or No Access Items

Item No:	1	Sample No:	N/A
Location:	First Floor - Corridor 001		



Material Description:	Panels above Fire Exit Door - Insulating Board	
Identification:	Previously Sampled - Asbestos Detected	
Approx. quantity:	2 no	
Accessibility	Difficult	<i>Assessment Score</i>
Product type:	Asbestos Insulating Board	2
Extent of Damage:	Slight / minor damage	1
Surface Treatment:	Unsealed AIB	2
Asbestos type:	Amosite	2
Material Assessment Score:		7
Priority Assessment Score:		Medium
Action:	Encapsulate	
Comments:	Previously sampled ref: Armour 23/10/19 - Sample DK/3	

Document Name	Author	Issued by	Revision Number	Issue Date	Page No
2021	David Kelly	Armour AS	1	22/10/2021	7

Item No: 2 **Sample No:** N/A

Location: Ground Floor - Office 002

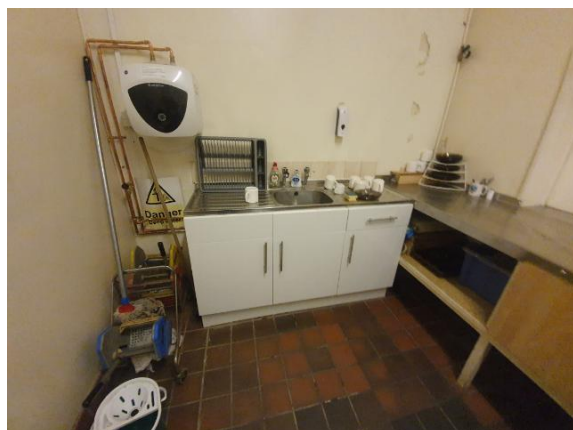


Material Description:	Panel to Fireplace - Cement Product	
Identification:	Previously Sampled - Asbestos Detected	
Approx. quantity:	<1 m ²	
Accessibility	Easy	<i>Assessment Score</i>
Product type:	Cement	1
Extent of Damage:	Slight / minor damage	1
Surface Treatment:	Unsealed Cement	1
Asbestos type:	Chrysotile	1
Material Assessment Score:		4
Priority Assessment Score:		Negligible
Action:	Manage	
Comments:	Previously sampled ref: Armour 23/10/19 - Sample DK/7	

Document Name	Author	Issued by	Revision Number	Issue Date	Page No
2021	David Kelly	Armour AS	1	22/10/2021	8

Item No: 3 **Sample No:** N/A

Location: Ground Floor - Kitchen 003



Material Description:	Sink Pad - Bituminous Product	
Identification:	Previously Sampled - Asbestos Detected	
Approx. quantity:	1 no	
Accessibility	Medium	Assessment Score
Product type:	Bitumen	1
Extent of Damage:	Slight / minor damage	1
Surface Treatment:	Non-friable	0
Asbestos type:	Chrysotile	1
Material Assessment Score:		3
Priority Assessment Score:		Negligible
Action:	Manage	
Comments:	Previously sampled ref: Armour 23/10/19 - Sample DK/9	

Document Name	Author	Issued by	Revision Number	Issue Date	Page No
2021	David Kelly	Armour AS	1	22/10/2021	9

Item No: 4

Sample No: N/A

Location: First Floor - Firing Range 004



Material Description:	Profiled Roof - Cement Product	
Identification:	Previously Sampled - Asbestos Detected	
Approx. quantity:	112 m ²	
Accessibility	Difficult	<i>Assessment Score</i>
Product type:	Cement	1
Extent of Damage:	Slight / minor damage	1
Surface Treatment:	Unsealed Cement	1
Asbestos type:	Chrysotile	1
Material Assessment Score:		4
Priority Assessment Score:		Negligible
Action:	Manage	
Comments:	Previously sampled ref: Armour 23/10/19 - Sample DK/10	

Document Name	Author	Issued by	Revision Number	Issue Date	Page No
2021	David Kelly	Armour AS	1	22/10/2021	10

Item No: 5 **Sample No:** N/A

Location: Ground Floor - Ladies WC 005

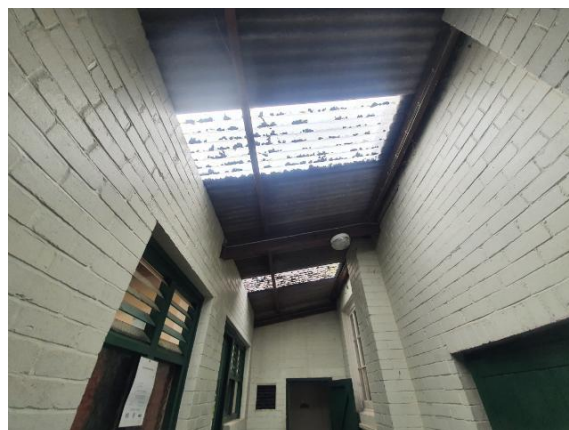


Material Description:	Incinerator Unit - No Access Gained	
Identification:	Presumed to Contain Asbestos	
Approx. quantity:	1 no	
Accessibility	Difficult	<i>Assessment Score</i>
Product type:	Asbestos Insulating Board	2
Extent of Damage:	Major damage	3
Surface Treatment:	Unsealed Insulation	3
Asbestos type:	Amosite, Chrysotile	2
Material Assessment Score:		10
Priority Assessment Score:		High
Action:	Manage	
Comments:	No access within live incinerator	

Document Name	Author	Issued by	Revision Number	Issue Date	Page No
2021	David Kelly	Armour AS	1	22/10/2021	11

Item No: 6 **Sample No:** N/A

Location: Ground Floor - WC's x 2 and Corridor 006



Material Description:	Profiled Roof - Cement Product	
Identification:	Previously Sampled - Asbestos Detected	
Approx. quantity:	30 m ²	
Accessibility	Difficult	<i>Assessment Score</i>
Product type:	Cement	1
Extent of Damage:	Slight / minor damage	1
Surface Treatment:	Unsealed Cement	1
Asbestos type:	Chrysotile	1
Material Assessment Score:		4
Priority Assessment Score:		Negligible
Action:	Manage	
Comments:	Previously sampled ref: Armour 23/10/19 - Sample DK/12	

Document Name	Author	Issued by	Revision Number	Issue Date	Page No
2021	David Kelly	Armour AS	1	22/10/2021	12

Item No: 7 **Sample No:** N/A

Location: Ground Floor - Drill Hall 007

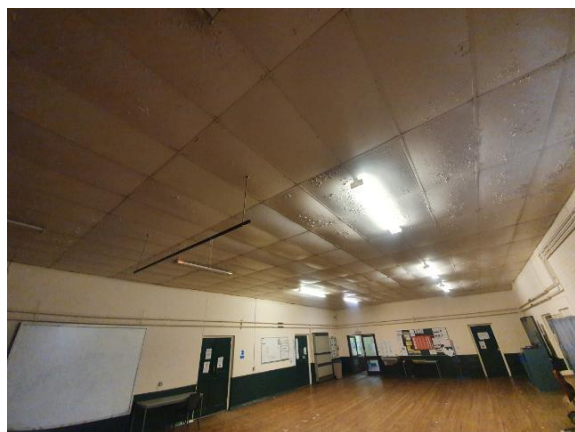


Material Description:	Heaters - Insulating Board	
Identification:	Presumed to Contain Asbestos	
Approx. quantity:	4 no	
Accessibility	Difficult	<i>Assessment Score</i>
Product type:	Asbestos Insulating Board	2
Extent of Damage:	Major damage	3
Surface Treatment:	Unsealed Insulation	3
Asbestos type:	Amosite, Chrysotile	2
Material Assessment Score:		10
Priority Assessment Score:		High
Action:	Manage	
Comments:	No access within live heaters	

Document Name	Author	Issued by	Revision Number	Issue Date	Page No
2021	David Kelly	Armour AS	1	22/10/2021	13

Item No: 8 **Sample No:** N/A

Location: Ground Floor - Drill Hall 008



Material Description:	Profiled Roof - Cement Product	
Identification:	Strongly Presumed to Contain Asbestos	
Approx. quantity:	40 m ²	
Accessibility	Difficult	<i>Assessment Score</i>
Product type:	Cement	1
Extent of Damage:	Slight / minor damage	1
Surface Treatment:	Unsealed Cement	1
Asbestos type:	Chrysotile	1
Material Assessment Score:		4
Priority Assessment Score:		Negligible
Action:	Manage	
Comments:	Above suspended ceiling	

Document Name	Author	Issued by	Revision Number	Issue Date	Page No
2021	David Kelly	Armour AS	1	22/10/2021	14

Item No: 11

Sample No: N/A

Location: External - Store 011



Material Description:	Profiled Roof - Cement Product	
Identification:	Strongly Presumed to Contain Asbestos	
Approx. quantity:	6 m ²	
Accessibility	Difficult	<i>Assessment Score</i>
Product type:	Cement	1
Extent of Damage:	Slight / minor damage	1
Surface Treatment:	Unsealed Cement	1
Asbestos type:	Chrysotile	1
Material Assessment Score:		4
Priority Assessment Score:		Negligible
Action:	Manage	
Comments:	Previously sampled ref: Armour 23/10/19 - Sample DK/12	

Document Name	Author	Issued by	Revision Number	Issue Date	Page No
2021	David Kelly	Armour AS	1	22/10/2021	15

Item No: 12

Sample No: N/A

Location: External - Shed 012



Material Description:	Profiled Roof - Cement Product	
Identification:	Strongly Presumed to Contain Asbestos	
Approx. quantity:	4 m ²	
Accessibility	Difficult	<i>Assessment Score</i>
Product type:	Cement	1
Extent of Damage:	Slight / minor damage	1
Surface Treatment:	Unsealed Cement	1
Asbestos type:	Chrysotile	1
Material Assessment Score:		4
Priority Assessment Score:		Negligible
Action:	Manage	
Comments:	Previously sampled ref: Armour 23/10/19 - Sample DK/12	

Document Name	Author	Issued by	Revision Number	Issue Date	Page No
2021	David Kelly	Armour AS	1	22/10/2021	16

Item No: 13

Sample No: N/A

Location: External - Main Hall 013



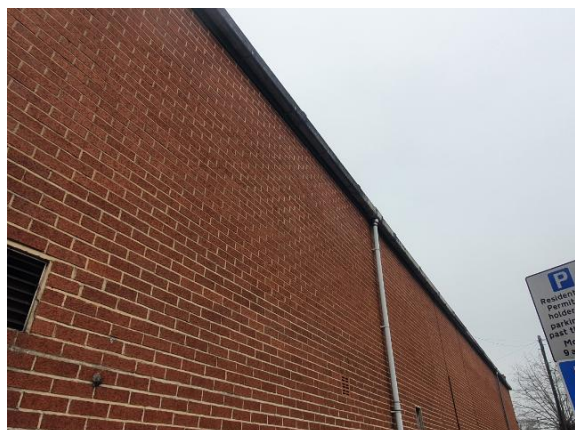
Material Description:	Cement Tiles & Profiled Roof - Cement Product	
Identification:	Strongly Presumed to Contain Asbestos	
Approx. quantity:	110 m ²	
Accessibility	Difficult	<i>Assessment Score</i>
Product type:	Cement	1
Extent of Damage:	Slight / minor damage	1
Surface Treatment:	Unsealed Cement	1
Asbestos type:	Chrysotile	1
Material Assessment Score:		4
Priority Assessment Score:		Negligible
Action:	Manage	
Comments:	N/A	

Document Name	Author	Issued by	Revision Number	Issue Date	Page No
2021	David Kelly	Armour AS	1	22/10/2021	17

Item No: 14

Sample No: N/A

Location: External - Range 014



Material Description:	Guttering - Cement Product	
Identification:	Strongly Presumed to Contain Asbestos	
Approx. quantity:	28 LM	
Accessibility	Difficult	<i>Assessment Score</i>
Product type:	Cement	1
Extent of Damage:	Slight / minor damage	1
Surface Treatment:	Unsealed Cement	1
Asbestos type:	Chrysotile	1
Material Assessment Score:		4
Priority Assessment Score:		Negligible
Action:	Manage	
Comments:	N/A	

Document Name	Author	Issued by	Revision Number	Issue Date	Page No
2021	David Kelly	Armour AS	1	22/10/2021	18

Section 5: Negative Items

Item No:	9	Sample No:	N/A
Location:	Ground Floor - Armoury 009		



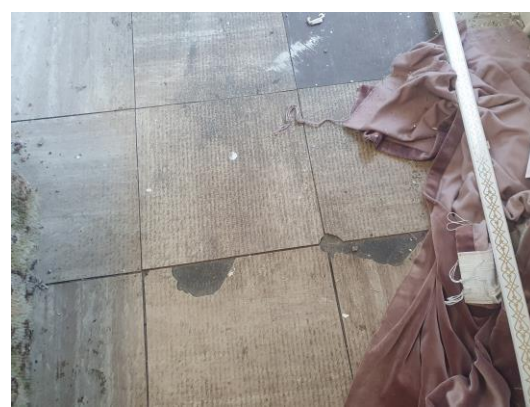
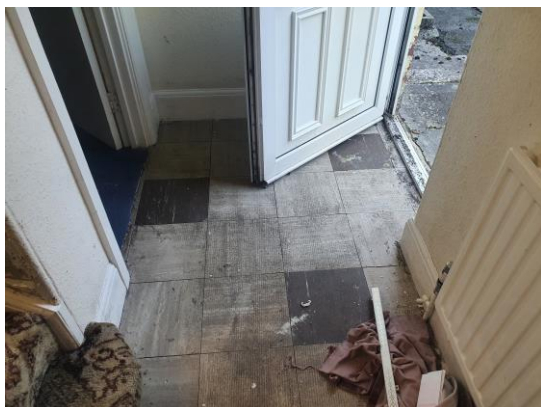
Material Description:	No Asbestos Suspected	
Identification:	N/A	
Approx. quantity:	N/A	
Accessibility	N/A	<i>Assessment Score</i>
Product type:	N/A	N/A
Extent of Damage:	N/A	N/A
Surface Treatment:	N/A	N/A
Asbestos type:	N/A	N/A
Material Assessment Score:		N/A
Priority Assessment Score:		N/A
Action:	N/A	
Comments:	Previously a no access area, now accessed. No asbestos found. Non-asbestos floor tiles – sampled during management survey.	

Document Name	Author	Issued by	Revision Number	Issue Date	Page No
2021	David Kelly	Armour AS	1	22/10/2021	19

Item No: 15

Sample No: DK/15

Location: Caretakers Flat – GF Lobby 015



Material Description:	Floor Tiles	
Identification:	Sampled – No Asbestos Found	
Approx. quantity:	N/A	
Accessibility	N/A	<i>Assessment Score</i>
Product type:	N/A	N/A
Extent of Damage:	N/A	N/A
Surface Treatment:	N/A	N/A
Asbestos type:	N/A	N/A
Material Assessment Score:		N/A
Priority Assessment Score:		N/A
Action:	N/A	
Comments:	Previously a no access area, now accessed. No asbestos found. Non-asbestos electrics.	

Document Name	Author	Issued by	Revision Number	Issue Date	Page No
2021	David Kelly	Armour AS	1	22/10/2021	20

Item No: 16

Sample No: DK/16

Location: Caretakers Flat – GF Lounge 016



Material Description:	Textured Coating to Walls	
Identification:	Sampled – No Asbestos Found	
Approx. quantity:	N/A	
Accessibility	N/A	<i>Assessment Score</i>
Product type:	N/A	N/A
Extent of Damage:	N/A	N/A
Surface Treatment:	N/A	N/A
Asbestos type:	N/A	N/A
Material Assessment Score:		N/A
Priority Assessment Score:		N/A
Action:	N/A	
Comments:	Previously a no access area, now accessed. No asbestos found.	

Document Name	Author	Issued by	Revision Number	Issue Date	Page No
2021	David Kelly	Armour AS	1	22/10/2021	21

Item No: 17

Sample No: DK/17

Location: Caretakers Flat – GF Living and Dining Room 017



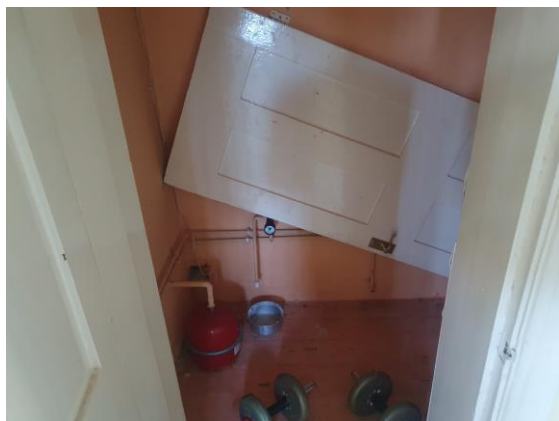
Material Description:	Ceiling Tiles - Fibreboard	
Identification:	Sampled – No Asbestos Found	
Approx. quantity:	N/A	
Accessibility	N/A	<i>Assessment Score</i>
Product type:	N/A	N/A
Extent of Damage:	N/A	N/A
Surface Treatment:	N/A	N/A
Asbestos type:	N/A	N/A
Material Assessment Score:		N/A
Priority Assessment Score:		N/A
Action:	N/A	
Comments:	Previously a no access area, now accessed. No asbestos found.	

Document Name	Author	Issued by	Revision Number	Issue Date	Page No
2021	David Kelly	Armour AS	1	22/10/2021	22

Item No: 18

Sample No: N/A

Location: Caretakers Flat – GF Cupboard 018



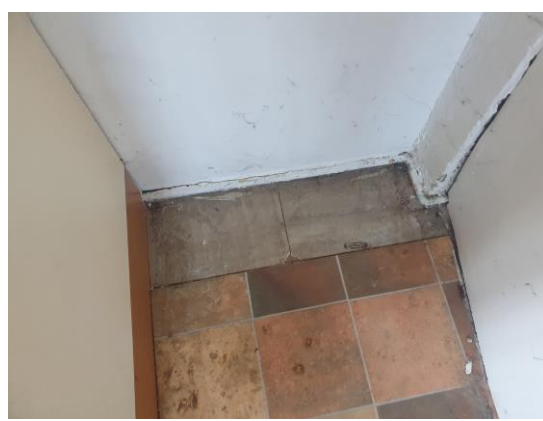
Material Description:	No Asbestos Suspected	
Identification:	N/A	
Approx. quantity:	N/A	
Accessibility	N/A	<i>Assessment Score</i>
Product type:	N/A	N/A
Extent of Damage:	N/A	N/A
Surface Treatment:	N/A	N/A
Asbestos type:	N/A	N/A
Material Assessment Score:		N/A
Priority Assessment Score:		N/A
Action:	N/A	
Comments:	Previously a no access area, now accessed. No asbestos found. Lathe and Plaster Ceiling.	

Document Name	Author	Issued by	Revision Number	Issue Date	Page No
2021	David Kelly	Armour AS	1	22/10/2021	23

Item No: 19

Sample No: N/A

Location: Caretakers Flat – GF Kitchen 019



Material Description:	No Asbestos Suspected	
Identification:	As per Sample DK/15	
Approx. quantity:	N/A	
Accessibility	N/A	<i>Assessment Score</i>
Product type:	N/A	N/A
Extent of Damage:	N/A	N/A
Surface Treatment:	N/A	N/A
Asbestos type:	N/A	N/A
Material Assessment Score:		N/A
Priority Assessment Score:		N/A
Action:	N/A	
Comments:	Previously a no access area, now accessed. No asbestos found.	

Document Name	Author	Issued by	Revision Number	Issue Date	Page No
2021	David Kelly	Armour AS	1	22/10/2021	24

Item No: 20

Sample No: N/A

Location: Caretakers Flat – FF Bedrooms x 3 and Cupboard



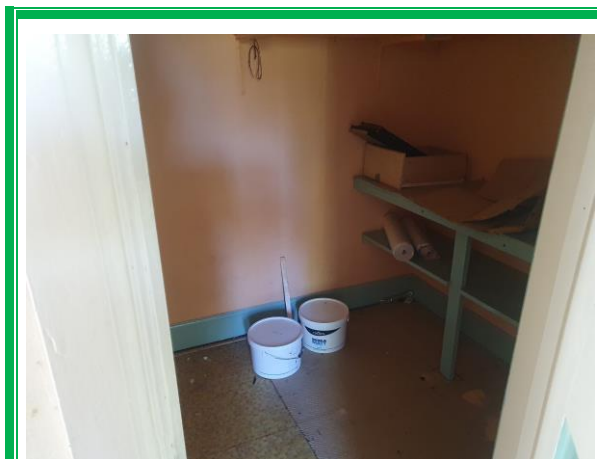
Material Description:	No Asbestos Suspected	
Identification:	N/A	
Approx. quantity:	N/A	
Accessibility	N/A	<i>Assessment Score</i>
Product type:	N/A	N/A
Extent of Damage:	N/A	N/A
Surface Treatment:	N/A	N/A
Asbestos type:	N/A	N/A
Material Assessment Score:		N/A
Priority Assessment Score:		N/A
Action:	N/A	
Comments:	Previously a no access area, now accessed. Lathe, plaster, and plasterboard ceiling.	

Document Name	Author	Issued by	Revision Number	Issue Date	Page No
2021	David Kelly	Armour AS	1	22/10/2021	25

Item No: 21

Sample No: N/A

Location: Caretakers Flat – FF Cupboard



Material Description:	No Asbestos Suspected	
Identification:	N/A	
Approx. quantity:	N/A	
Accessibility	N/A	<i>Assessment Score</i>
Product type:	N/A	N/A
Extent of Damage:	N/A	N/A
Surface Treatment:	N/A	N/A
Asbestos type:	N/A	N/A
Material Assessment Score:		N/A
Priority Assessment Score:		N/A
Action:	N/A	
Comments:	Previously a no access area, now accessed. Non-asbestos lino.	

Document Name	Author	Issued by	Revision Number	Issue Date	Page No
2021	David Kelly	Armour AS	1	22/10/2021	26

Item No: 22

Sample No: N/A

Location: Caretakers Flat – FF Bathroom



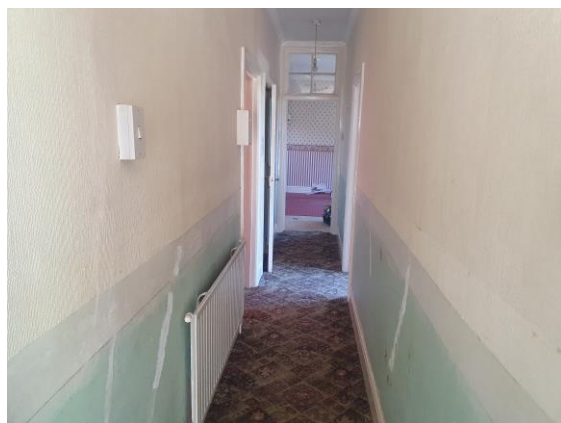
Material Description:	No Asbestos Suspected	
Identification:	As per Sample DK/17	
Approx. quantity:	N/A	
Accessibility	N/A	<i>Assessment Score</i>
Product type:	N/A	N/A
Extent of Damage:	N/A	N/A
Surface Treatment:	N/A	N/A
Asbestos type:	N/A	N/A
Material Assessment Score:		N/A
Priority Assessment Score:		N/A
Action:	N/A	
Comments:	Previously a no access area, now accessed. Lathe, plaster, and plasterboard ceiling.	

Document Name	Author	Issued by	Revision Number	Issue Date	Page No
2021	David Kelly	Armour AS	1	22/10/2021	27

Item No: 23

Sample No: N/A

Location: Caretakers Flat – FF Corridor and Stairwell



Material Description:	No Asbestos Suspected	
Identification:	N/A	
Approx. quantity:	N/A	
Accessibility	N/A	<i>Assessment Score</i>
Product type:	N/A	N/A
Extent of Damage:	N/A	N/A
Surface Treatment:	N/A	N/A
Asbestos type:	N/A	N/A
Material Assessment Score:		N/A
Priority Assessment Score:		N/A
Action:	N/A	
Comments:	Previously a no access area, now accessed. No asbestos suspected.	

Document Name	Author	Issued by	Revision Number	Issue Date	Page No
2021	David Kelly	Armour AS	1	22/10/2021	28

Item No: 24 **Sample No:** N/A

Location: Caretakers Flat – Loft Space



Material Description:	No Asbestos Suspected	
Identification:	N/A	
Approx. quantity:	N/A	
Accessibility	N/A	<i>Assessment Score</i>
Product type:	N/A	N/A
Extent of Damage:	N/A	N/A
Surface Treatment:	N/A	N/A
Asbestos type:	N/A	N/A
Material Assessment Score:		N/A
Priority Assessment Score:		N/A
Action:	N/A	
Comments:	Previously a no access area, limited access as no crawl boards. No asbestos suspected.	

Document Name	Author	Issued by	Revision Number	Issue Date	Page No
2021	David Kelly	Armour AS	1	22/10/2021	29



Section 6: Survey Objectives

Instructions were received from Kelvin Walker of Wessex RFCA to carry out a Re-Inspection asbestos survey at Totnes Platoon, Totnes, Devon, TQ9 5XW in accordance with HSG264 and Armour Analytical's quality procedures.

The survey was carried out on 02 March 2021 by David Kelly with the objective of facilitating a Re-Inspection report.

A survey with the objective of accessing previously no accessed areas was carried out on 13 October 2021 by David Kelly.

Document Name	Author	Issued by	Revision Number	Issue Date	Page No
2021	David Kelly	Armour AS	1	22/10/2021	30



Section 7: Survey Notes

This report has been written with reference to the various Guidance Notes etc, issued, and current at the date of this report and describes circumstances at the site on the date the investigation took place.

Where similar items exist in the building, only one or two samples may have been taken to ascertain the material content. It was assumed that similar products were of the same material.

Any person undertaking work within the buildings should be told of the presence of asbestos. This briefing also applies to any other person associated with the site, including staff, sub-contractors and others.

The drawings in the report are not to scale and are illustrative only to indicate approximate locations. The descriptions used are for location identification purposes.

All the recommendations described in this report are based upon assumptions made after consideration of the type of material, condition of the material, its location, analysis result and type of use the area is thought to be subjected to. However, statutory authorities or others could require amendments based on local knowledge, change in legislation, change in use or indeed other conditions or criteria.

Samples taken from floor tiles (or similar material) may include a bitumen adhesive as part of the sample. It is known that some proprietary brands of bitumen have an asbestos content and this will be included as an integral part of the bulk sample unless otherwise stated.

Due to the artex being non-homogenous, it is recommended to treat all areas as containing asbestos if you have a positive sample of artex.

Document Name	Author	Issued by	Revision Number	Issue Date	Page No
2021	David Kelly	Armour AS	1	22/10/2021	31

Section 8: Material Assessment Algorithm

Variable	Score	Examples
Product type	1	Vinyl, 'Bakelite', Cement, Textured Coating, Non-Friable Debris, Floor Tiles, Bitumen, Reinforced Plastics, Mastic (putty), Windowsills
	2	Asbestos Insulating Board, Paper, Rope, Burned Cement Debris, Flashguards, Gaskets
	3	Pipe Insulation, Spray Coating, Friable Debris, Loose Fill Asbestos
Condition / Damage	0	Good
	1	Slight / Minor Damage
	2	Moderate Damage – Breakage to Surface Treatment
	3	Major Damage – Smashed or Exposed Material
Surface Treatment	0	Non-Friable E.G. Vinyl
	1	Enclosed Insulation, Encapsulated AIB, Unsealed Cement, Woven Material, Paper
	2	Unsealed AIB, Encapsulated Insulation, Encapsulated Pipe Lagging
	3	Unsealed Insulation, Spray Coating, Unsealed Pipe Lagging
Asbestos Type	1	Chrysotile
	2	Amosite & Other Amphiboles
	3	Crocidolite

The scores from each of the four sections are added together to produce a risk score:

Risk score	Risk assessment
10 or more	High risk
7 – 9	Medium risk
5 – 6	Low risk
4 & below	Negligible risk

Section 9: Certificates of Bulk Analysis



Our Ref: J220043 FI: 3
Your Ref: 3700
Date: 20/10/2021

ENVIROCHEM
Analytical Laboratories Ltd.
12 The Gardens
Broadcut, Fareham
Hampshire
PO16 8SS



1227
Tel: (01329) 287777
Fax: (01329) 287755
www.envirochem.co.uk
office@envirochem.co.uk

Asbestos Fibre Identification Report

Client: Armour Analytical Services Ltd
Admirals Yard, Station Road, Patchway, Bristol, BS34 6LR

Site Address: Totnes Platoon, Totnes, -

Sampled By: Armour Analytical Services Ltd

Date sampled/received: 18th October 2021

Date analysed: 20th October 2021

Analyst/s: Chloe Bowman

Analysis Location: 12 The Gardens, Broadcut, Fareham, Hampshire, PO16 8SS

ANALYTICAL PROCEDURE

Fibre identification was carried out in accordance with the documented 'in-house' method (2.01) based on the HSE Guidance Note HSG 248. These employed stereo microscopy, polarized microscopy and dispersion staining techniques.

RESULTS

Sample No.	Sample Ref.	Location	Asbestos Detected	Asbestos Type
DK/15	BS711388	Caretakers flat. Ground floor. Lobby. Floor tiles.	No	
DK/16	BS711389	Caretakers flat. Ground floor. Living room. Textured coating to walls.	No	
DK/17	BS711390	Caretakers flat. Ground floor. Living room & dining room. Ceiling tiles.	No	

NOTES:

1. Sample(s) were examined for the presence of 6 types of asbestos fibres: crocidolite (blue), amosite (brown), chrysotile (white), anthophyllite, actinolite and tremolite.
2. The results shown in this test report specifically refer to the sample(s) tested as received unless otherwise stated and samples collected by the client are evaluated using information provided by the client. For samples collected by the client the date of receipt is deemed to be the same as the date sampled.
3. Envirochem is a UKAS accredited laboratory for sampling and identification of asbestos containing materials.
4. Comments, observations and opinions are outside the scope of UKAS accreditation.
5. The analytical method in the HSG248 does not quantify the amount of asbestos present, therefore UKAS accreditation does not permit quantification.
6. If, during fibre identification, only 1 or 2 fibres are seen and identified as asbestos, then the term 'trace asbestos identified' is used.
7. This report shall not be reproduced except in full, without written approval of Envirochem.

SIGNATURE:



Authorised signatory

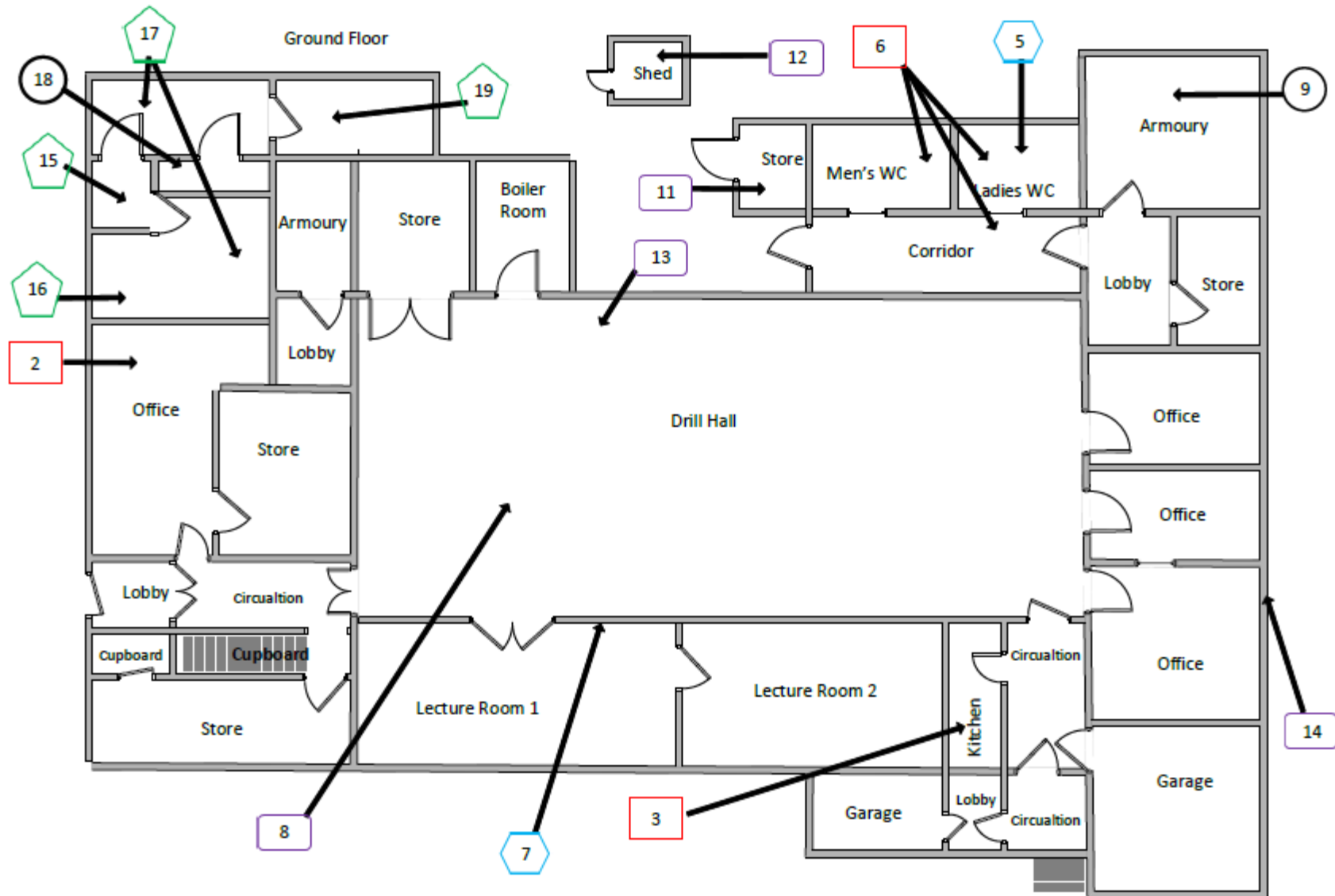
PRINT NAME: Chloe Bowman







Reg. No. 2378228 England. Registered Office: Envirochem, 12 The Gardens, Broadcut, Fareham, Hampshire, PO16 8SS.

Page 1 of 1

Document Name	Author	Issued by	Revision Number	Issue Date	Page No
2021	David Kelly	Armour AS	1	22/10/2021	33

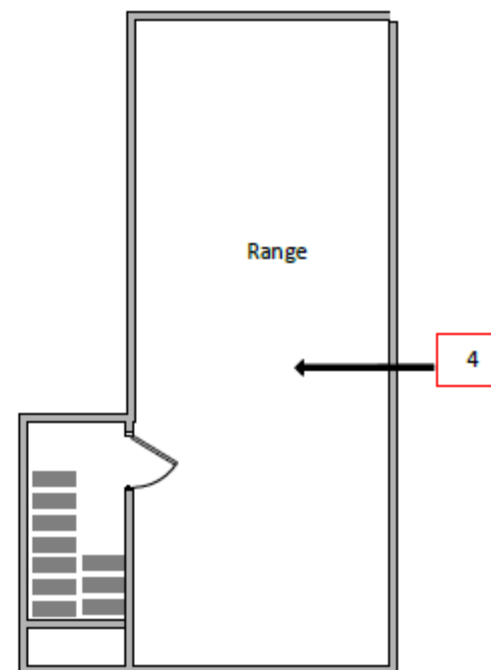
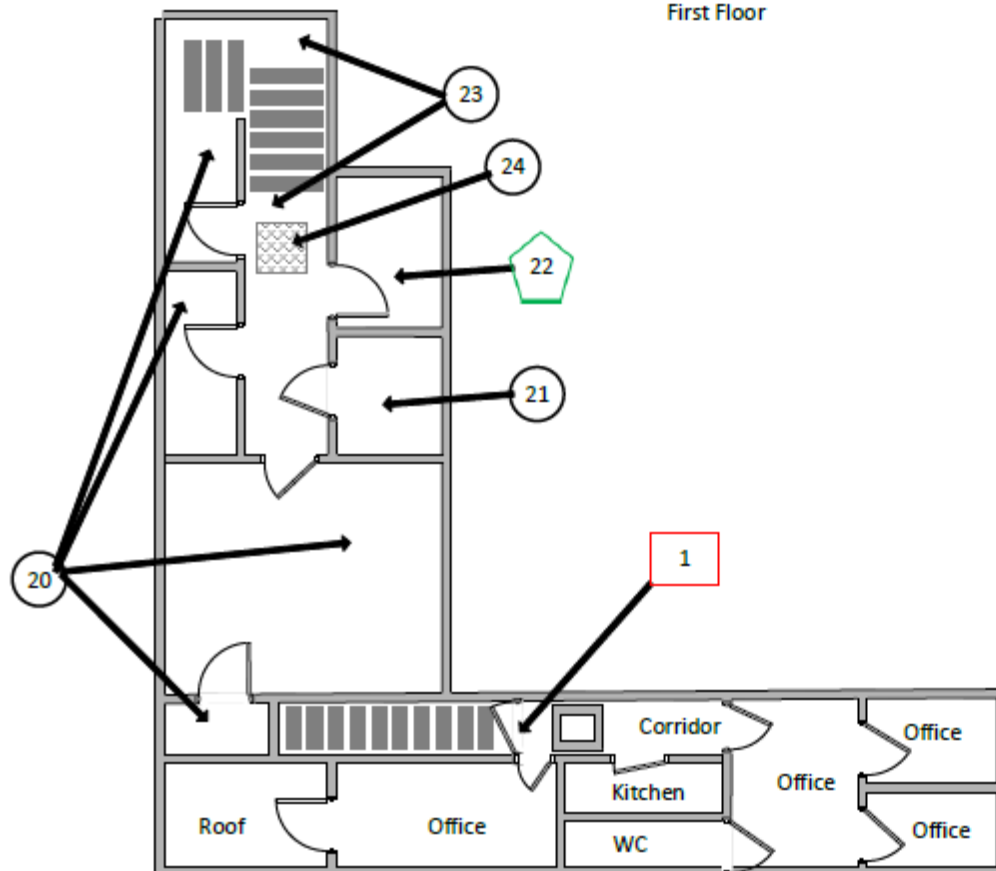
Section 10: Site Plan









Key	
	Visual Inspection
	Asbestos Detected (Positive Item)
	No Asbestos Detected (Negative Item)
	Presumed to Contain Asbestos
	Strongly Presumed to Contain Asbestos
	No Access

Document Name	Author	Issued by	Revision Number	Issue Date	Page No
2021	David Kelly	Armour AS	0	04/03/2021	34

First Floor



Key	
	Visual Inspection
	Asbestos Detected (Positive Item)
	No Asbestos Detected (Negative Item)
	Presumed to Contain Asbestos
	Strongly Presumed to Contain Asbestos
	No Access

Document Name	Author	Issued by	Revision Number	Issue Date	Page No
2021	David Kelly	Armour AS	0	04/03/2021	35



I the surveyor can confirm that this report is accurate to my findings onsite and this survey has been Content checked by myself.

Checked by: Will Fyles

Date: 22/10/2021

I the Admin Manager can confirm that this report is accurate to the paperwork received and this survey has been quality checked by myself.

Checked by: Andrea Bansee

Date: 22/10/2021

Report Compiled By

Armour Analytical Services Ltd, Admirals Yard, Station Road, Bristol, BS34 6LR

Document Name	Author	Issued by	Revision Number	Issue Date	Page No
2021	David Kelly	Armour AS	0	04/03/2021	36