



ARMOUR
ANALYTICAL SERVICES

Project Number 2481

**Management
Asbestos Survey Report**

**Wyvern Barracks, Barrack Road, Exeter, Devon,
EX2 6AE (Building 7)**



Working in Partnership with Shield Environmental Services



Document Name	Author	Issued by	Revision Number	Issue Date	Page No
2019	Emma Humphreys	Armour AS	0	05/07/2019	1

Contents

Section	
1	Contacts & Authorisation
2	Executive Summary
3	Site Description & Survey Information
4	Positive and Presumed Photos Sheets
5	Negative Photos Sheets
6	Survey Objectives
7	Survey Techniques
8	Survey Caveat
9	Survey Notes
10	Material Assessment Algorithm
11	Certificates of Bulk Analysis
12	Site Plan

Document Name	Author	Issued by	Revision Number	Issue Date	Page No
2019	Emma Humphreys	Armour AS	0	05/07/2019	2



Section 1: Contact Details

Client Details:		Instructing Party:	
Wessex RFCA Mount House Mount Street Taunton TA1 3QE		Shield Environmental Shield House Caxton Business Park Crown Way Bristol BS30 8XJ	
Contact Name:	Sue Morrell	Contact Name:	Chloe Smith
Tel: 01823250115	Fax: N/A	Tel: 01173012650	Fax: N/A

Site Address:		Report Author:	
Wyvern Barracks Barrack Road Exeter Devon EX2 6AE		Armour Analytical Services Admirals Yard Station Road Bristol BS34 6LR	
Contact Name:	Andy Palmer	Contact Name:	David Kelly
Tel: 07775560719	Fax: N/A	Mobile: 07769707519	

Lead Surveyor's Name:	Lead Surveyor's Authorising Signature:
D. Kelly	

Document Name	Author	Issued by	Revision Number	Issue Date	Page No
2019	Emma Humphreys	Armour AS	0	05/07/2019	3

Section 2: Executive Summary

Sample Number	Sample Type	Location	Analysis
1	Insulation board ceiling tiles	Ground Floor – Corridor	N.A.D.I.S
2	Gaskets	Main Lobby and Stairwell – Ground Floor	N.A.D.I.S
3	Sink Pad	Office and Kitchen	N.A.D.I.S
4	Sink Pad	Kitchen	N.A.D.I.S
5	Gaskets	Boiler Room	N.A.D.I.S
6	Insulation board ceiling panels	Boiler Room	N.A.D.I.S

N.A.D.I.S – No Asbestos Detected in Sample

The following items have been Presumed to be Asbestos Containing Materials as they were not accessible at the time of the survey:

Item 27 – Office G70 – No access within safe casings
 Item 34 – Office F24 – No access within safe casings
 Item 36 – Office F23 – No access within safe casings
 Item 48 – Room G08 – Unable to sample the gaskets as they were too inset within flanges
 Item 51 – Conference Room and Room F17 – No access within rooms as locked
 Item 52 – Room G31 – No access within the room as locked
 Item 53 – Yeoman Offices, G09, 10, 13 and 16 – No access within rooms as locked
 Item 54 – 715 Military Intelligence Section – No access permitted
 Item 55 – Rooms G21 and G30 - No access permitted
 Item 56 – Rooms G18, G19 and G20 - No access within the rooms as locked
 Item 57 – Stored G24 and G25 - No access within the rooms as locked
 Item 67 – Rooms F02, 04, 05, 08, 09 and 10 - No access within rooms as locked
 Item 70 – Boiler Room – No access within Hamworthy boilers as live

The presence of asbestos in these areas cannot be ascertained at this time. If any works are to be carried out in these areas in the future, then these works should be approached cautiously.

In accordance with current legislation, any suspect materials encountered in these areas are to be assumed to contain asbestos until proven otherwise. This will normally involve cessation of works in the affected area.

Document Name	Author	Issued by	Revision Number	Issue Date	Page No
2019	Emma Humphreys	Armour AS	0	05/07/2019	4

Section 3: Site Description & Survey Information

Brief description on the general building construction

Solid brick construction with a pitched tiled roof.

Caveat for no access areas

No access within several rooms as they were locked. Several attempts were made throughout a week period to access the rooms but the operatives that held the keys were not available.

EXTERNAL MATERIALS

Roof Type	Pitched
Roof Materials	Non-Asbestos Tiles
Soffits	Brick, Timber
Fascia	Timber
Walls	Brick
Verge Under cloaking	N/A
Guttering	Metal
Downpipes	Metal
Window/Door frames	Timber
Other Materials	N/A

INTERNAL MATERIALS

Loft Insulation	Fiberglass
Roof Underlining	Timber
Ceilings	Plasterboard, Concrete, Supalux Ceiling Tiles
Walls <i>Internal</i>	Plasterboard, Brick
Floors	Carpet, Screed, Lino
Doors/Frames	Timber
Pipework/Insulation	Armaflex, Foam, Plastic
Boxings	Textured Coating, Plasterboard, MDF
Boiler Make	Hamworthy
Flue Pipes	Metal
Storage Heaters	Radiators
Electrical Boxes/Machinery	Modern Boxes
Ducting/Risers	N/A
Stairs	Timber
Lift Shafts	N/A
Other Materials	N/A

Document Name	Author	Issued by	Revision Number	Issue Date	Page No
2019	Emma Humphreys	Armour AS	0	05/07/2019	5

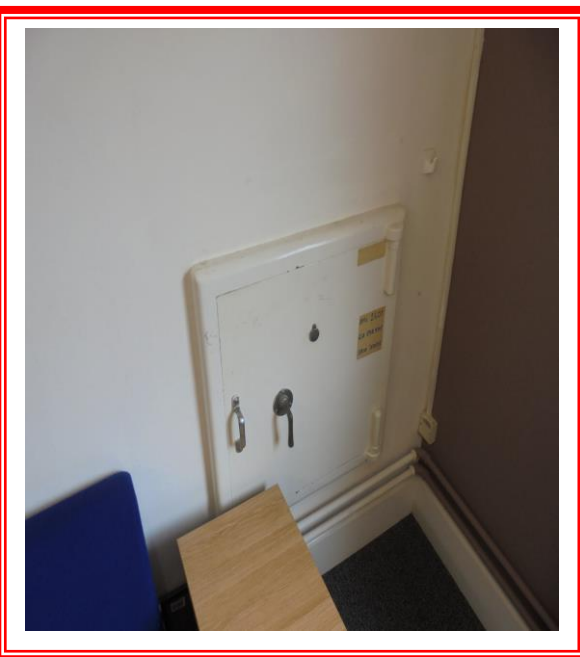
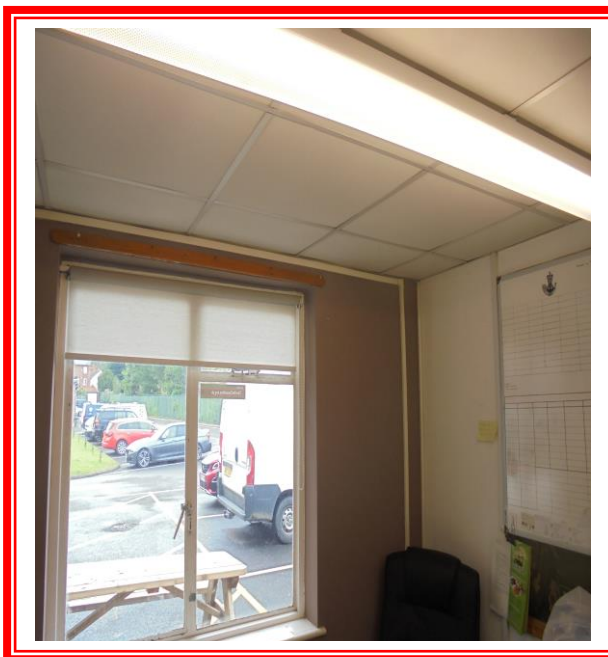


Section 4: Positive and Presumed Photos Sheets

Item No: 27

Sample No: N/A

Location: Office G70



Material Description:	No access within safe casings	
Identification:	Presumed to Contain Asbestos	
Approx. quantity:	X 1 Safe	
Accessibility	Low	<i>Assessment Score</i>
Product type:	No Access	2
Extent of Damage:	No Access	2
Surface Treatment:	No Access	2
Asbestos type:	No Access	2
Material Assessment Score:		8
Priority Assessment Score:		Medium
Action:	Manage	
Comments:	No access without irreparable damage	

Document Name	Author	Issued by	Revision Number	Issue Date	Page No
2019	Emma Humphreys	Armour AS	0	05/07/2019	6

**Item No: 34****Sample No: N/A****Location: Office – F24**

Material Description:	No access within safe casings	
Identification:	Presumed to Contain Asbestos	
Approx. quantity:	X 1 Safe	
Accessibility	Low	<i>Assessment Score</i>
Product type:	No Access	2
Extent of Damage:	No Access	2
Surface Treatment:	No Access	2
Asbestos type:	No Access	2
Material Assessment Score:		8
Priority Assessment Score:		Medium
Action:	Manage	
Comments:	No photo of safe was possible on request of the room occupant	

Document Name	Author	Issued by	Revision Number	Issue Date	Page No
2019	Emma Humphreys	Armour AS	0	05/07/2019	7



Item No: 36

Sample No: N/A

Location: Office F23



Material Description:	No access within safe casings	
Identification:	Presumed to Contain Asbestos	
Approx. quantity:	X 1 Safe	
Accessibility	Low	<i>Assessment Score</i>
Product type:	No Access	2
Extent of Damage:	No Access	2
Surface Treatment:	No Access	2
Asbestos type:	No Access	2
Material Assessment Score:		8
Priority Assessment Score:		Medium
Action:	Manage	
Comments:	No photo of safe was possible on request of the room occupant	

Document Name	Author	Issued by	Revision Number	Issue Date	Page No
2019	Emma Humphreys	Armour AS	0	05/07/2019	8

**Item No: 48****Sample No: N/A****Location: G08**

Material Description:	Gaskets	
Identification:	Presumed to Contain Asbestos	
Approx. quantity:	X 2 Gaskets	
Accessibility	Low	<i>Assessment Score</i>
Product type:	Textiles	2
Extent of Damage:	Minor	1
Surface Treatment:	Unsealed	1
Asbestos type:	Chrysotile	1
Material Assessment Score:		5
Priority Assessment Score:		Low
Action:	Manage	
Comments:	Located in room G08. No access to sample gaskets as they were too inset within flanges	

Document Name	Author	Issued by	Revision Number	Issue Date	Page No
2019	Emma Humphreys	Armour AS	0	05/07/2019	9



Item No: 51

Sample No: N/A

Location: Conference Room and Room F17



Material Description:	No access with Rooms	
Identification:	Presumed to Contain Asbestos	
Approx. quantity:	Unknown	
Accessibility	Low	<i>Assessment Score</i>
Product type:	No Access	3
Extent of Damage:	No Access	3
Surface Treatment:	No Access	3
Asbestos type:	No Access	3
Material Assessment Score:		12
Priority Assessment Score:		High
Action:	Further Investigation Required	
Comments:	Temporarily locked and then in constant use for remainder of survey. Occupants using the rooms would not allow access.	

Document Name	Author	Issued by	Revision Number	Issue Date	Page No
2019	Emma Humphreys	Armour AS	0	05/07/2019	10

**Item No: 52****Sample No: N/A****Location: Room G31**

Material Description:	No access with Room	
Identification:	Presumed to Contain Asbestos	
Approx. quantity:	Unknown	
Accessibility	Low	<i>Assessment Score</i>
Product type:	No Access	3
Extent of Damage:	No Access	3
Surface Treatment:	No Access	3
Asbestos type:	No Access	3
Material Assessment Score:		12
Priority Assessment Score:		High
Action:	Further Investigation Required	
Comments:	Locked throughout the survey. Checked with Andy Palmer and with the guard room but they did not know where the key was kept.	

Document Name	Author	Issued by	Revision Number	Issue Date	Page No
2019	Emma Humphreys	Armour AS	0	05/07/2019	11

**Item No: 53****Sample No: N/A****Location: Yeoman Offices – G09, G10, G13 and G16**

Material Description:	No access with Rooms	
Identification:	Presumed to Contain Asbestos	
Approx. quantity:	X 4 Rooms	
Accessibility	Low	<i>Assessment Score</i>
Product type:	No Access	3
Extent of Damage:	No Access	3
Surface Treatment:	No Access	3
Asbestos type:	No Access	3
Material Assessment Score:		12
Priority Assessment Score:		High
Action:	Further Investigation Required	
Comments:	Rooms constantly locked. Andy Palmer instructed that the keys were held with the Yeomanry but none of the Yeomanry operatives were present during the survey. Several attempts were made to access the rooms during the survey.	

Document Name	Author	Issued by	Revision Number	Issue Date	Page No
2019	Emma Humphreys	Armour AS	0	05/07/2019	12



Item No: 54

Sample No: N/A

Location: 715 Military Intelligence Section



Material Description:	Access was not permitted to Area	
Identification:	Presumed to Contain Asbestos	
Approx. quantity:	Several Rooms	
Accessibility	Low	<i>Assessment Score</i>
Product type:	No Access	3
Extent of Damage:	No Access	3
Surface Treatment:	No Access	3
Asbestos type:	No Access	3
Material Assessment Score:		12
Priority Assessment Score:		High
Action:	Further Investigation Required	
Comments:	Access was not permitted to section as instructed by site contact (Andy Palmer)	

Document Name	Author	Issued by	Revision Number	Issue Date	Page No
2019	Emma Humphreys	Armour AS	0	05/07/2019	13

**Item No: 55****Sample No: N/A****Location: Rooms G21 and G30**

Material Description:	Access was not permitted	
Identification:	Presumed to Contain Asbestos	
Approx. quantity:	X 7 Rooms	
Accessibility	Low	<i>Assessment Score</i>
Product type:	No Access	3
Extent of Damage:	No Access	3
Surface Treatment:	No Access	3
Asbestos type:	No Access	3
Material Assessment Score:		12
Priority Assessment Score:		High
Action:	Further Investigation Required	
Comments:	Access was not permitted to section as instructed by site contact (Andy Palmer)	

Document Name	Author	Issued by	Revision Number	Issue Date	Page No
2019	Emma Humphreys	Armour AS	0	05/07/2019	14

**Item No: 56****Sample No: N/A****Location: Rooms G18, 19 and 20**

Material Description:	No access with locked rooms	
Identification:	Presumed to Contain Asbestos	
Approx. quantity:	X 3 Rooms	
Accessibility	Low	<i>Assessment Score</i>
Product type:	No Access	3
Extent of Damage:	No Access	2
Surface Treatment:	No Access	3
Asbestos type:	No Access	3
Material Assessment Score:		11
Priority Assessment Score:		High
Action:	Further Investigation Required	
Comments:	Rooms constantly locked and site contact (Andy Palmer) did not have access and did not know where keys were kept	

Document Name	Author	Issued by	Revision Number	Issue Date	Page No
2019	Emma Humphreys	Armour AS	0	05/07/2019	15



Item No: 57

Sample No: N/A

Location: Stored G24 and G25



Material Description:	No access with locked rooms	
Identification:	Presumed to Contain Asbestos	
Approx. quantity:	X 2 Rooms	
Accessibility	Low	<i>Assessment Score</i>
Product type:	No Access	3
Extent of Damage:	No Access	3
Surface Treatment:	No Access	3
Asbestos type:	No Access	3
Material Assessment Score:		12
Priority Assessment Score:		High
Action:	Further Investigation Required	
Comments:	Could not located owner of keys. Site contact (Andy Palmer) did not have access	

Document Name	Author	Issued by	Revision Number	Issue Date	Page No
2019	Emma Humphreys	Armour AS	0	05/07/2019	16

**Item No: 67****Sample No: N/A****Location: Rooms F02, 04, 05, 08, 09, 10**

Material Description:	No access with locked rooms	
Identification:	Presumed to Contain Asbestos	
Approx. quantity:	X 6 Rooms	
Accessibility	Low	<i>Assessment Score</i>
Product type:	No Access	3
Extent of Damage:	No Access	3
Surface Treatment:	No Access	3
Asbestos type:	No Access	3
Material Assessment Score:		12
Priority Assessment Score:		High
Action:	Further Investigation Required	
Comments:	Rooms constantly locked. Andy Palmer instructed that the keys were held with the Yeomanry but none of the Yeomanry operatives were present during the survey. Several attempts were made to access the rooms during the survey.	

Document Name	Author	Issued by	Revision Number	Issue Date	Page No
2019	Emma Humphreys	Armour AS	0	05/07/2019	17

**Item No: 70****Sample No: N/A****Location: Boiler Room**

Material Description:	No access with Hamworthy Boilers	
Identification:	Presumed to Contain Asbestos	
Approx. quantity:	X 4 Boilers	
Accessibility	Low	<i>Assessment Score</i>
Product type:	No Access	2
Extent of Damage:	No Access	2
Surface Treatment:	No Access	2
Asbestos type:	No Access	2
Material Assessment Score:		8
Priority Assessment Score:		Medium
Action:	Manage	
Comments:	No access within boilers as live	

Document Name	Author	Issued by	Revision Number	Issue Date	Page No
2019	Emma Humphreys	Armour AS	0	05/07/2019	18

Section 5: Negative Photos Sheets

Item No: 1
Sample No: N/A
Location: Office – G01


Material Description:	Visual Inspection – No Suspect Materials Found	
Identification:	N/A	
Approx. quantity:	N/A	
Accessibility	N/A	<i>Assessment Score</i>
Product type:		N/A
Extent of Damage:		N/A
Surface Treatment:		N/A
Asbestos type:		N/A
Material Assessment Score:		N/A
Priority Assessment Score:		N/A
Action:	N/A	
Comments:	N/A	

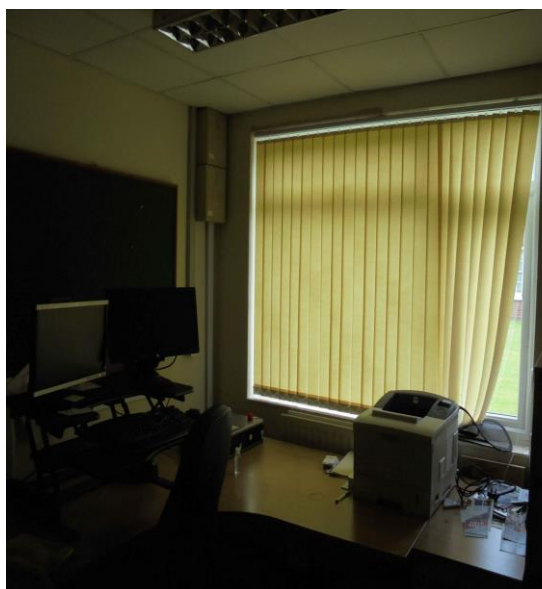
Document Name	Author	Issued by	Revision Number	Issue Date	Page No
2019	Emma Humphreys	Armour AS	0	05/07/2019	19



Item No: 2

Sample No: N/A

Location: Offices – G05 and G05A



Material Description:	Visual Inspection – No Suspect Materials Found	
Identification:	N/A	
Approx. quantity:	N/A	
Accessibility	N/A	<i>Assessment Score</i>
Product type:		N/A
Extent of Damage:		N/A
Surface Treatment:		N/A
Asbestos type:		N/A
Material Assessment Score:		N/A
Priority Assessment Score:		N/A
Action:	N/A	
Comments:	No access within timber boxing	

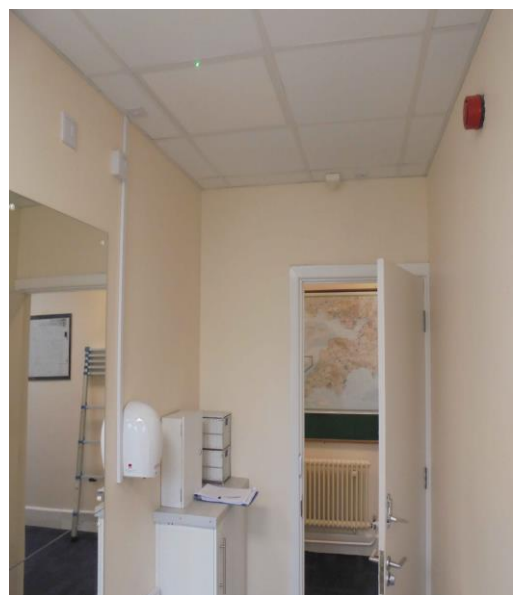
Document Name	Author	Issued by	Revision Number	Issue Date	Page No
2019	Emma Humphreys	Armour AS	0	05/07/2019	20



Item No: 3

Sample No: N/A

Location: WC



Material Description:	Visual Inspection – No Suspect Materials Found	
Identification:	N/A	
Approx. quantity:	N/A	
Accessibility	N/A	<i>Assessment Score</i>
Product type:		N/A
Extent of Damage:		N/A
Surface Treatment:		N/A
Asbestos type:		N/A
Material Assessment Score:		N/A
Priority Assessment Score:		N/A
Action:	N/A	
Comments:	N/A	

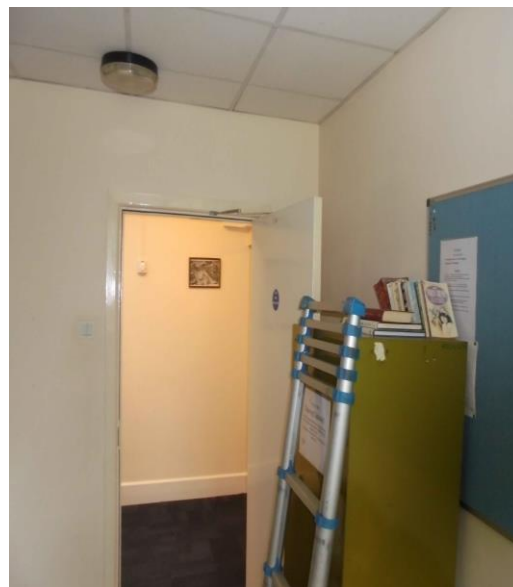
Document Name	Author	Issued by	Revision Number	Issue Date	Page No
2019	Emma Humphreys	Armour AS	0	05/07/2019	21



Item No: 4

Sample No: N/A

Location: Kitchen – G04



Material Description:	Visual Inspection – No Suspect Materials Found	
Identification:	N/A	
Approx. quantity:	N/A	
Accessibility	N/A	<i>Assessment Score</i>
Product type:		N/A
Extent of Damage:		N/A
Surface Treatment:		N/A
Asbestos type:		N/A
Material Assessment Score:		N/A
Priority Assessment Score:		N/A
Action:	N/A	
Comments:	N/A	

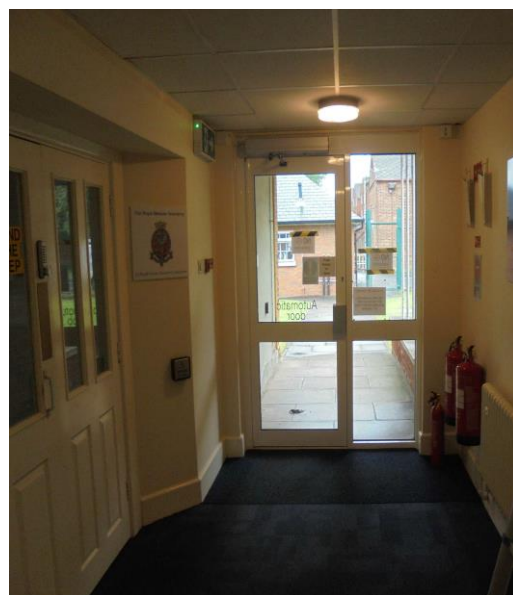
Document Name	Author	Issued by	Revision Number	Issue Date	Page No
2019	Emma Humphreys	Armour AS	0	05/07/2019	22



Item No: 5

Sample No: N/A

Location: Corridor & Lobby – Ground Floor



Material Description:	Visual Inspection – No Suspect Materials Found	
Identification:	N/A	
Approx. quantity:	N/A	
Accessibility	N/A	<i>Assessment Score</i>
Product type:		N/A
Extent of Damage:		N/A
Surface Treatment:		N/A
Asbestos type:		N/A
Material Assessment Score:		N/A
Priority Assessment Score:		N/A
Action:	N/A	
Comments:	Limited access into ceiling voids due to services and insulation blocking access	

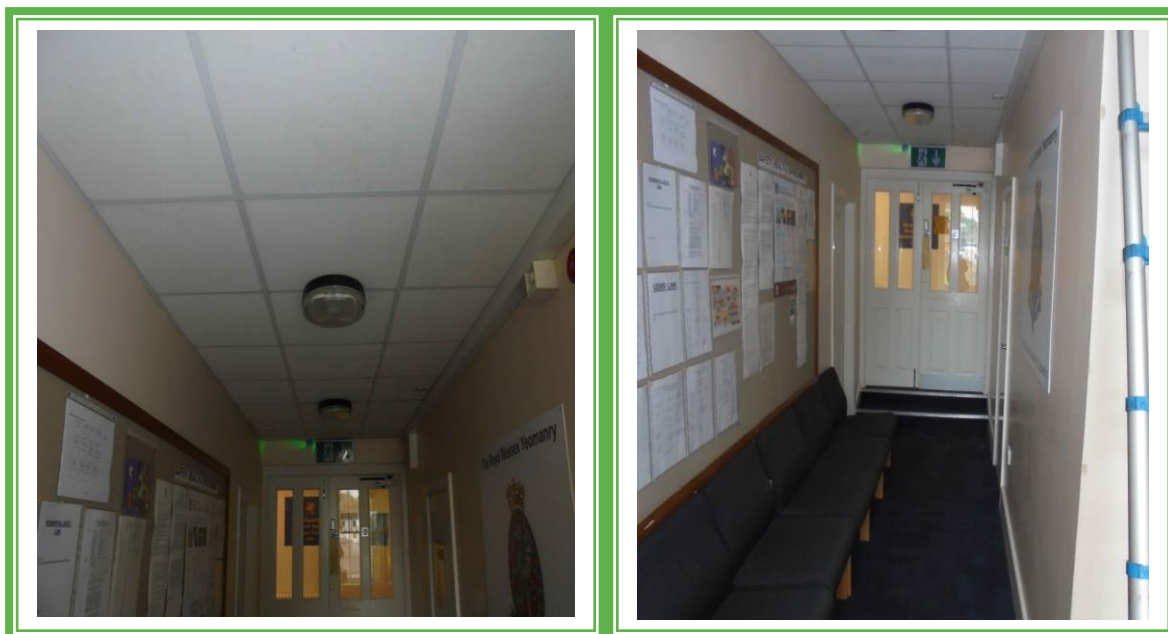
Document Name	Author	Issued by	Revision Number	Issue Date	Page No
2019	Emma Humphreys	Armour AS	0	05/07/2019	23



Item No: 6

Sample No: DK/1

Location: Corridor – Ground Floor



Material Description:	Insulation Board Ceiling Tiles	
Identification:	Samples – No Asbestos Detected	
Approx. quantity:	200M2+ (Throughout Building)	
Accessibility	N/A	<i>Assessment Score</i>
Product type:		N/A
Extent of Damage:		N/A
Surface Treatment:		N/A
Asbestos type:		N/A
Material Assessment Score:		N/A
Priority Assessment Score:		N/A
Action:	N/A	
Comments:	Limited access into ceiling voids due to services and insulation blocking access	

Document Name	Author	Issued by	Revision Number	Issue Date	Page No
2019	Emma Humphreys	Armour AS	0	05/07/2019	24



Item No: 7

Sample No: N/A

Location: Lobby – Ground Floor



Material Description:	Visual Inspection – No Suspect Materials Found	
Identification:	N/A	
Approx. quantity:	N/A	
Accessibility	N/A	<i>Assessment Score</i>
Product type:		N/A
Extent of Damage:		N/A
Surface Treatment:		N/A
Asbestos type:		N/A
Material Assessment Score:		N/A
Priority Assessment Score:		N/A
Action:	N/A	
Comments:	Modern Stair Nosing	

Document Name	Author	Issued by	Revision Number	Issue Date	Page No
2019	Emma Humphreys	Armour AS	0	05/07/2019	25



Item No: 8

Sample No: N/A

Location: Yeomanry Corridor – Ground Floor



Material Description:	Visual Inspection – No Suspect Materials Found	
Identification:	N/A	
Approx. quantity:	N/A	
Accessibility	N/A	<i>Assessment Score</i>
Product type:		N/A
Extent of Damage:		N/A
Surface Treatment:		N/A
Asbestos type:		N/A
Material Assessment Score:		N/A
Priority Assessment Score:		N/A
Action:	N/A	
Comments:	Non asbestos slate tiles packers under ceiling joists	

Document Name	Author	Issued by	Revision Number	Issue Date	Page No
2019	Emma Humphreys	Armour AS	0	05/07/2019	26



Item No: 9

Sample No: N/A

Location: WC – Ground Floor



Material Description:	Visual Inspection – No Suspect Materials Found	
Identification:	N/A	
Approx. quantity:	N/A	
Accessibility	N/A	<i>Assessment Score</i>
Product type:		N/A
Extent of Damage:		N/A
Surface Treatment:		N/A
Asbestos type:		N/A
Material Assessment Score:		N/A
Priority Assessment Score:		N/A
Action:	N/A	
Comments:	No access within timber boxings	

Document Name	Author	Issued by	Revision Number	Issue Date	Page No
2019	Emma Humphreys	Armour AS	0	05/07/2019	27



Item No: 10

Sample No: N/A

Location: Lobby and Stairwell – Ground Floor



Material Description:	Visual Inspection – No Suspect Materials Found	
Identification:	N/A	
Approx. quantity:	N/A	
Accessibility	N/A	<i>Assessment Score</i>
Product type:		N/A
Extent of Damage:		N/A
Surface Treatment:		N/A
Asbestos type:		N/A
Material Assessment Score:		N/A
Priority Assessment Score:		N/A
Action:	N/A	
Comments:	Modern Stair Nosing	

Document Name	Author	Issued by	Revision Number	Issue Date	Page No
2019	Emma Humphreys	Armour AS	0	05/07/2019	28



Item No: 11

Sample No: N/A

Location: Corridor x 2 – Ground Floor



Material Description:	Visual Inspection – No Suspect Materials Found	
Identification:	N/A	
Approx. quantity:	N/A	
Accessibility	N/A	<i>Assessment Score</i>
Product type:		N/A
Extent of Damage:		N/A
Surface Treatment:		N/A
Asbestos type:		N/A
Material Assessment Score:		N/A
Priority Assessment Score:		N/A
Action:	N/A	
Comments:	N/A	

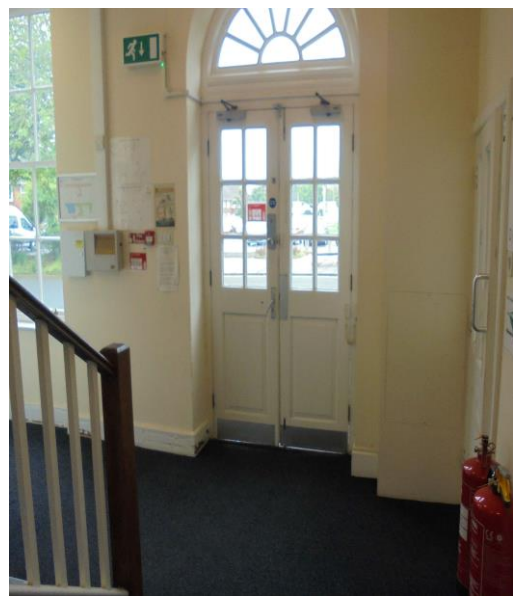
Document Name	Author	Issued by	Revision Number	Issue Date	Page No
2019	Emma Humphreys	Armour AS	0	05/07/2019	29



Item No: 12

Sample No: DK/2

Location: Main Lobby & Stairwell – Ground Floor



Material Description:	Gaskets	
Identification:	Sampled – No Asbestos Detected	
Approx. quantity:	X 2	
Accessibility	N/A	<i>Assessment Score</i>
Product type:		N/A
Extent of Damage:		N/A
Surface Treatment:		N/A
Asbestos type:		N/A
Material Assessment Score:		N/A
Priority Assessment Score:		N/A
Action:	N/A	
Comments:	Located within boxing. Modern stair nosing to stairs	

Document Name	Author	Issued by	Revision Number	Issue Date	Page No
2019	Emma Humphreys	Armour AS	0	05/07/2019	30



Item No: 13

Sample No: N/A

Location: Office – G43



Material Description:	Visual Inspection – No Suspect Materials Found	
Identification:	N/A	
Approx. quantity:	N/A	
Accessibility	N/A	<i>Assessment Score</i>
Product type:		N/A
Extent of Damage:		N/A
Surface Treatment:		N/A
Asbestos type:		N/A
Material Assessment Score:		N/A
Priority Assessment Score:		N/A
Action:	N/A	
Comments:	N/A	

Document Name	Author	Issued by	Revision Number	Issue Date	Page No
2019	Emma Humphreys	Armour AS	0	05/07/2019	31

**Item No: 14****Sample No: N/A****Location: Corridor – Ground Floor**

Material Description:	Visual Inspection – No Suspect Materials Found	
Identification:	N/A	
Approx. quantity:	N/A	
Accessibility	N/A	<i>Assessment Score</i>
Product type:		N/A
Extent of Damage:		N/A
Surface Treatment:		N/A
Asbestos type:		N/A
Material Assessment Score:		N/A
Priority Assessment Score:		N/A
Action:	N/A	
Comments:	N/A	

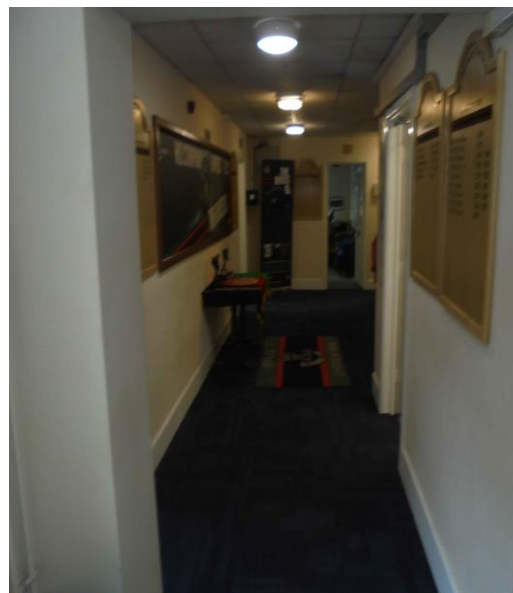
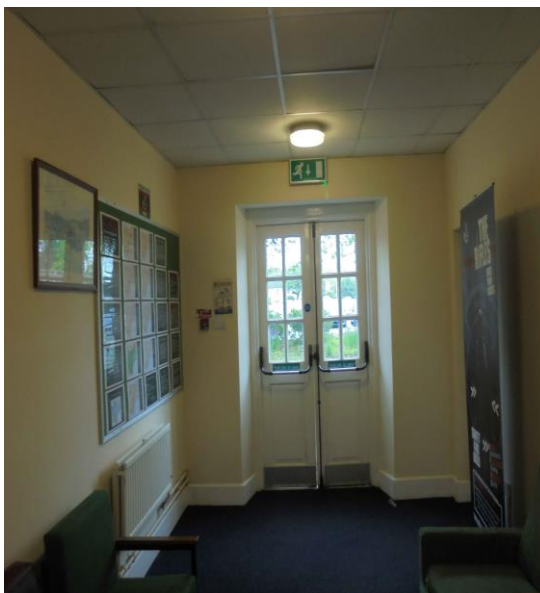
Document Name	Author	Issued by	Revision Number	Issue Date	Page No
2019	Emma Humphreys	Armour AS	0	05/07/2019	32



Item No: 15

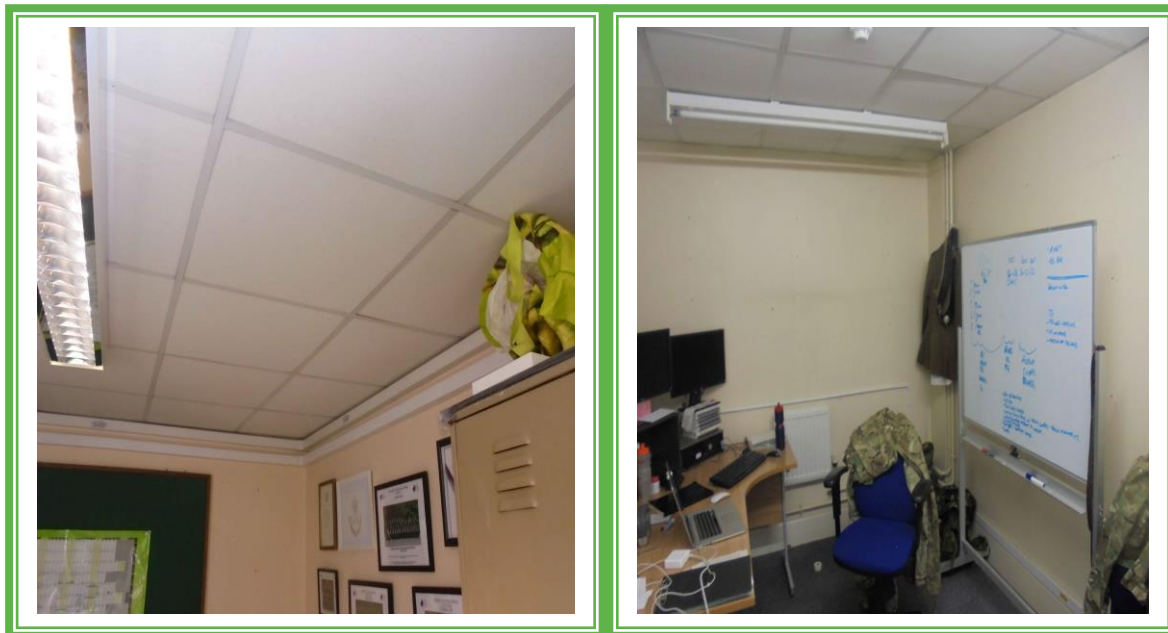
Sample No: N/A

Location: Lobby and Corridor – Ground Floor



Material Description:	Visual Inspection – No Suspect Materials Found	
Identification:	N/A	
Approx. quantity:	N/A	
Accessibility	N/A	<i>Assessment Score</i>
Product type:		N/A
Extent of Damage:		N/A
Surface Treatment:		N/A
Asbestos type:		N/A
Material Assessment Score:		N/A
Priority Assessment Score:		N/A
Action:	N/A	
Comments:	N/A	

Document Name	Author	Issued by	Revision Number	Issue Date	Page No
2019	Emma Humphreys	Armour AS	0	05/07/2019	33

**Item No: 16****Sample No: N/A****Location: Offices G45 and G57**

Material Description:	Visual Inspection – No Suspect Materials Found	
Identification:	N/A	
Approx. quantity:	N/A	
Accessibility	N/A	<i>Assessment Score</i>
Product type:		N/A
Extent of Damage:		N/A
Surface Treatment:		N/A
Asbestos type:		N/A
Material Assessment Score:		N/A
Priority Assessment Score:		N/A
Action:	N/A	
Comments:	Limited access into ceiling voids due to services and insulation blocking access	

Document Name	Author	Issued by	Revision Number	Issue Date	Page No
2019	Emma Humphreys	Armour AS	0	05/07/2019	34



Item No: 17

Sample No: N/A

Location: Offices G46, G47 & G48



Material Description:	Visual Inspection – No Suspect Materials Found	
Identification:	N/A	
Approx. quantity:	N/A	
Accessibility	N/A	<i>Assessment Score</i>
Product type:		N/A
Extent of Damage:		N/A
Surface Treatment:		N/A
Asbestos type:		N/A
Material Assessment Score:		N/A
Priority Assessment Score:		N/A
Action:	N/A	
Comments:	Limited access into ceiling voids due to services and insulation blocking access	

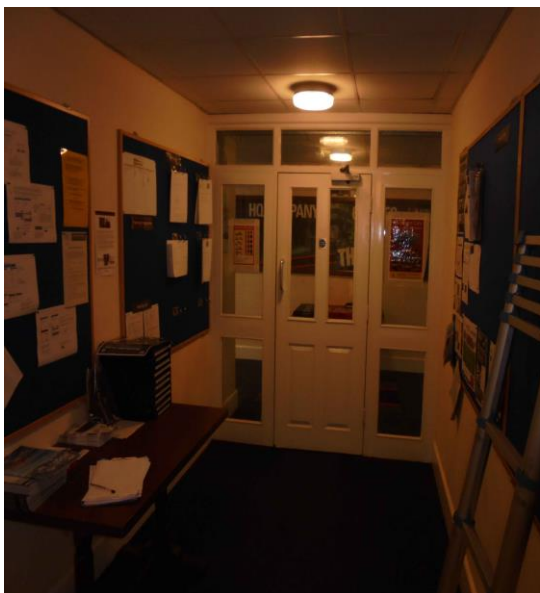
Document Name	Author	Issued by	Revision Number	Issue Date	Page No
2019	Emma Humphreys	Armour AS	0	05/07/2019	35



Item No: 18

Sample No: N/A

Location: Corridor & Lobby – Ground Floor



Material Description:	Visual Inspection – No Suspect Materials Found	
Identification:	N/A	
Approx. quantity:	N/A	
Accessibility	N/A	<i>Assessment Score</i>
Product type:		N/A
Extent of Damage:		N/A
Surface Treatment:		N/A
Asbestos type:		N/A
Material Assessment Score:		N/A
Priority Assessment Score:		N/A
Action:	N/A	
Comments:	N/A	

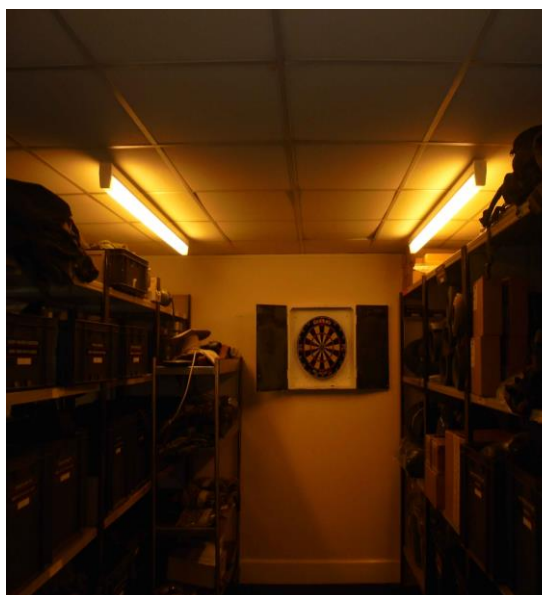
Document Name	Author	Issued by	Revision Number	Issue Date	Page No
2019	Emma Humphreys	Armour AS	0	05/07/2019	36



Item No: 19

Sample No: N/A

Location: Stores G50 and G51



Material Description:	Visual Inspection – No Suspect Materials Found	
Identification:	N/A	
Approx. quantity:	N/A	
Accessibility	N/A	<i>Assessment Score</i>
Product type:		N/A
Extent of Damage:		N/A
Surface Treatment:		N/A
Asbestos type:		N/A
Material Assessment Score:		N/A
Priority Assessment Score:		N/A
Action:	N/A	
Comments:	N/A	

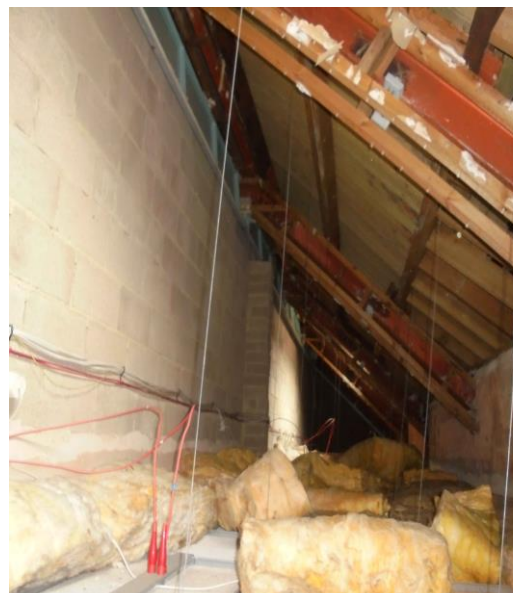
Document Name	Author	Issued by	Revision Number	Issue Date	Page No
2019	Emma Humphreys	Armour AS	0	05/07/2019	37



Item No: 20

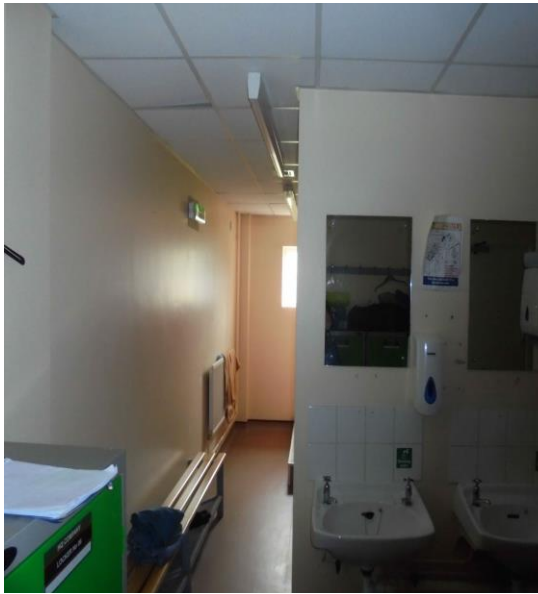
Sample No: N/A

Location: Stores G58, G54 and G56



Material Description:	Visual Inspection – No Suspect Materials Found	
Identification:	N/A	
Approx. quantity:	N/A	
Accessibility	N/A	<i>Assessment Score</i>
Product type:		N/A
Extent of Damage:		N/A
Surface Treatment:		N/A
Asbestos type:		N/A
Material Assessment Score:		N/A
Priority Assessment Score:		N/A
Action:	N/A	
Comments:	Non asbestos lino under carpet	

Document Name	Author	Issued by	Revision Number	Issue Date	Page No
2019	Emma Humphreys	Armour AS	0	05/07/2019	38

**Item No: 21****Sample No: N/A****Location: WC's x 2 – Ground Floor**

Material Description:	Visual Inspection – No Suspect Materials Found	
Identification:	N/A	
Approx. quantity:	N/A	
Accessibility	N/A	<i>Assessment Score</i>
Product type:		N/A
Extent of Damage:		N/A
Surface Treatment:		N/A
Asbestos type:		N/A
Material Assessment Score:		N/A
Priority Assessment Score:		N/A
Action:	N/A	
Comments:	Modern water heater. No access within timber boxings	

Document Name	Author	Issued by	Revision Number	Issue Date	Page No
2019	Emma Humphreys	Armour AS	0	05/07/2019	39

**Item No: 22****Sample No: N/A****Location: Locker Room – G65**

Material Description:	Visual Inspection – No Suspect Materials Found	
Identification:	N/A	
Approx. quantity:	N/A	
Accessibility	N/A	<i>Assessment Score</i>
Product type:		N/A
Extent of Damage:		N/A
Surface Treatment:		N/A
Asbestos type:		N/A
Material Assessment Score:		N/A
Priority Assessment Score:		N/A
Action:	N/A	
Comments:	N/A	

Document Name	Author	Issued by	Revision Number	Issue Date	Page No
2019	Emma Humphreys	Armour AS	0	05/07/2019	40



Item No: 23

Sample No: N/A

Location: Locker Room – G82



Material Description:	Visual Inspection – No Suspect Materials Found	
Identification:	N/A	
Approx. quantity:	N/A	
Accessibility	N/A	<i>Assessment Score</i>
Product type:		N/A
Extent of Damage:		N/A
Surface Treatment:		N/A
Asbestos type:		N/A
Material Assessment Score:		N/A
Priority Assessment Score:		N/A
Action:	N/A	
Comments:	N/A	

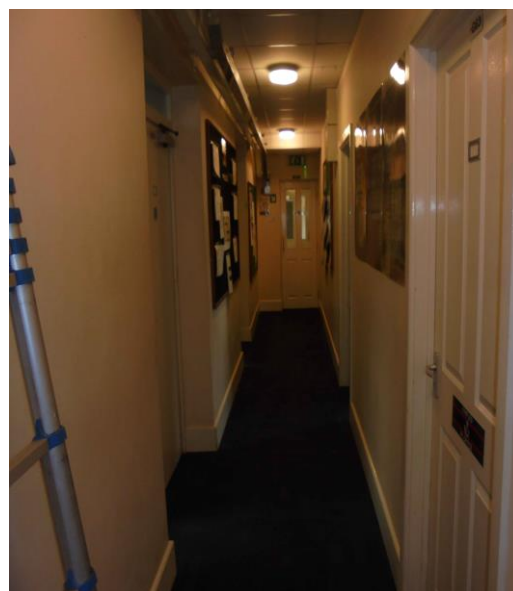
Document Name	Author	Issued by	Revision Number	Issue Date	Page No
2019	Emma Humphreys	Armour AS	0	05/07/2019	41



Item No: 24

Sample No: N/A

Location: Corridor – Ground Floor



Material Description:	Visual Inspection – No Suspect Materials Found	
Identification:	N/A	
Approx. quantity:	N/A	
Accessibility	N/A	<i>Assessment Score</i>
Product type:		N/A
Extent of Damage:		N/A
Surface Treatment:		N/A
Asbestos type:		N/A
Material Assessment Score:		N/A
Priority Assessment Score:		N/A
Action:	N/A	
Comments:	N/A	

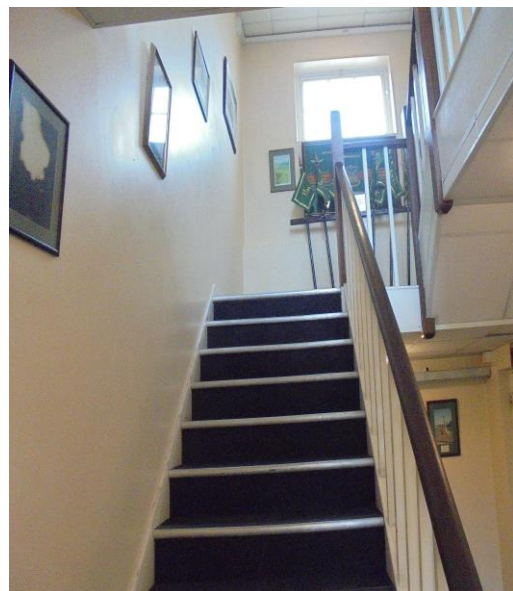
Document Name	Author	Issued by	Revision Number	Issue Date	Page No
2019	Emma Humphreys	Armour AS	0	05/07/2019	42



Item No: 25

Sample No: N/A

Location: Lobby & Stairwell – Ground Floor



Material Description:	Visual Inspection – No Suspect Materials Found	
Identification:	N/A	
Approx. quantity:	N/A	
Accessibility	N/A	<i>Assessment Score</i>
Product type:		N/A
Extent of Damage:		N/A
Surface Treatment:		N/A
Asbestos type:		N/A
Material Assessment Score:		N/A
Priority Assessment Score:		N/A
Action:	N/A	
Comments:	Modern Stair Nosing	

Document Name	Author	Issued by	Revision Number	Issue Date	Page No
2019	Emma Humphreys	Armour AS	0	05/07/2019	43

**Item No: 26****Sample No: DK/3****Location: Office & Kitchen – Ground Floor**

Material Description:	Sink Pad	
Identification:	Sampled – No Asbestos Detected	
Approx. quantity:	1 x Sink	
Accessibility	N/A	<i>Assessment Score</i>
Product type:		N/A
Extent of Damage:		N/A
Surface Treatment:		N/A
Asbestos type:		N/A
Material Assessment Score:		N/A
Priority Assessment Score:		N/A
Action:	N/A	
Comments:	N/A	

Document Name	Author	Issued by	Revision Number	Issue Date	Page No
2019	Emma Humphreys	Armour AS	0	05/07/2019	44



Item No: 28

Sample No: N/A

Location: WC's G88 & G89



Material Description:	Visual Inspection – No Suspect Materials Found	
Identification:	N/A	
Approx. quantity:	N/A	
Accessibility	N/A	<i>Assessment Score</i>
Product type:		N/A
Extent of Damage:		N/A
Surface Treatment:		N/A
Asbestos type:		N/A
Material Assessment Score:		N/A
Priority Assessment Score:		N/A
Action:	N/A	
Comments:	N/A	

Document Name	Author	Issued by	Revision Number	Issue Date	Page No
2019	Emma Humphreys	Armour AS	0	05/07/2019	45

**Item No: 29****Sample No: N/A****Location: Rooms F31,F32, F33 & Circulation**

Material Description:	Visual Inspection – No Suspect Materials Found	
Identification:	N/A	
Approx. quantity:	N/A	
Accessibility	N/A	<i>Assessment Score</i>
Product type:		N/A
Extent of Damage:		N/A
Surface Treatment:		N/A
Asbestos type:		N/A
Material Assessment Score:		N/A
Priority Assessment Score:		N/A
Action:	N/A	
Comments:	N/A	

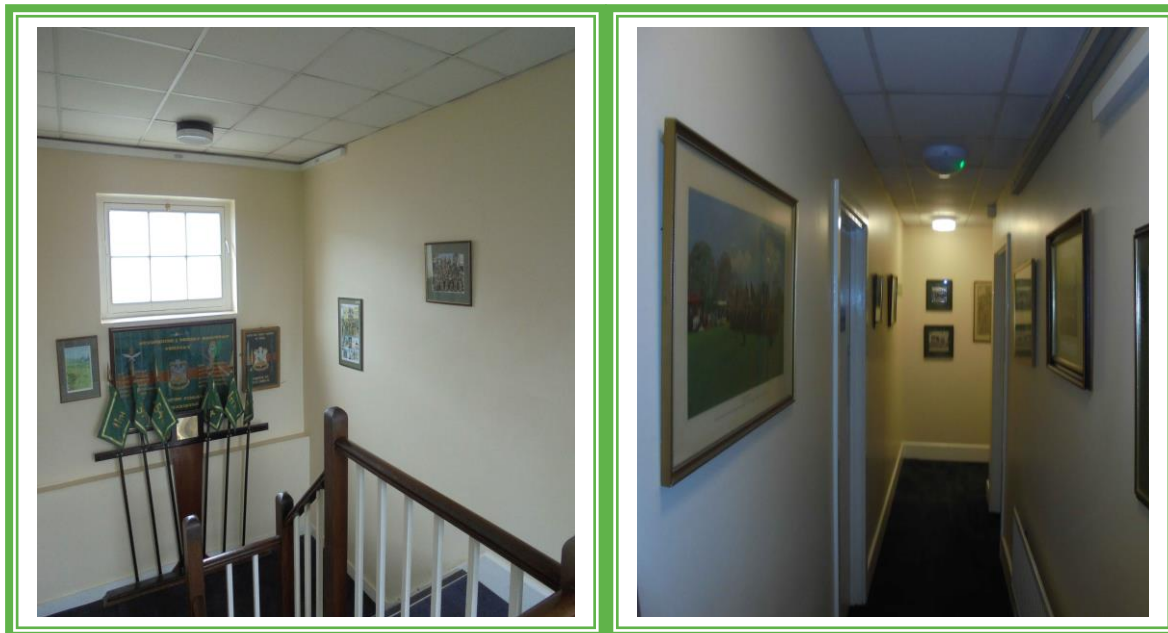
Document Name	Author	Issued by	Revision Number	Issue Date	Page No
2019	Emma Humphreys	Armour AS	0	05/07/2019	46



Item No: 30

Sample No: N/A

Location: Landing & Corridor – First Floor



Material Description:	Visual Inspection – No Suspect Materials Found	
Identification:	N/A	
Approx. quantity:	N/A	
Accessibility	N/A	<i>Assessment Score</i>
Product type:		N/A
Extent of Damage:		N/A
Surface Treatment:		N/A
Asbestos type:		N/A
Material Assessment Score:		N/A
Priority Assessment Score:		N/A
Action:	N/A	
Comments:	N/A	

Document Name	Author	Issued by	Revision Number	Issue Date	Page No
2019	Emma Humphreys	Armour AS	0	05/07/2019	47



Item No: 31

Sample No: N/A

Location: Copy Room – F28 & F27



Material Description:	Visual Inspection – No Suspect Materials Found	
Identification:	N/A	
Approx. quantity:	N/A	
Accessibility	N/A	<i>Assessment Score</i>
Product type:		N/A
Extent of Damage:		N/A
Surface Treatment:		N/A
Asbestos type:		N/A
Material Assessment Score:		N/A
Priority Assessment Score:		N/A
Action:	N/A	
Comments:	Limited access above ceiling tiles due to insulation above tiles	

Document Name	Author	Issued by	Revision Number	Issue Date	Page No
2019	Emma Humphreys	Armour AS	0	05/07/2019	48



Item No: 32

Sample No: N/A

Location: WC's F29 & F30



Material Description:	Visual Inspection – No Suspect Materials Found	
Identification:	N/A	
Approx. quantity:	N/A	
Accessibility	N/A	<i>Assessment Score</i>
Product type:		N/A
Extent of Damage:		N/A
Surface Treatment:		N/A
Asbestos type:		N/A
Material Assessment Score:		N/A
Priority Assessment Score:		N/A
Action:	N/A	
Comments:	N/A	

Document Name	Author	Issued by	Revision Number	Issue Date	Page No
2019	Emma Humphreys	Armour AS	0	05/07/2019	49



Item No: 33

Sample No: N/A

Location: Office – F26



Material Description:	Visual Inspection – No Suspect Materials Found	
Identification:	N/A	
Approx. quantity:	N/A	
Accessibility	N/A	<i>Assessment Score</i>
Product type:		N/A
Extent of Damage:		N/A
Surface Treatment:		N/A
Asbestos type:		N/A
Material Assessment Score:		N/A
Priority Assessment Score:		N/A
Action:	N/A	
Comments:	Limited access above ceiling tiles due to insulation above tiles. No access within timber boxing	

Document Name	Author	Issued by	Revision Number	Issue Date	Page No
2019	Emma Humphreys	Armour AS	0	05/07/2019	50



Item No: 35

Sample No: N/A

Location: Office – F25



Material Description:	Visual Inspection – No Suspect Materials Found	
Identification:	N/A	
Approx. quantity:	N/A	
Accessibility	N/A	<i>Assessment Score</i>
Product type:		N/A
Extent of Damage:		N/A
Surface Treatment:		N/A
Asbestos type:		N/A
Material Assessment Score:		N/A
Priority Assessment Score:		N/A
Action:	N/A	
Comments:	N/A	

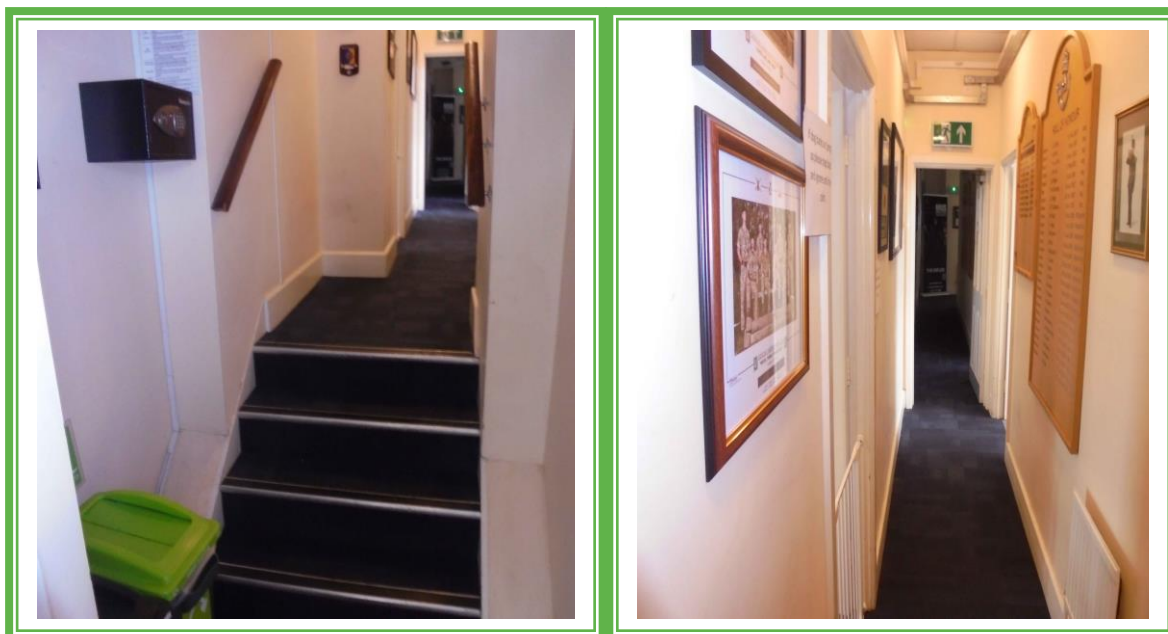
Document Name	Author	Issued by	Revision Number	Issue Date	Page No
2019	Emma Humphreys	Armour AS	0	05/07/2019	51



Item No: 37

Sample No: N/A

Location: Corridors x 2 – First Floor



Material Description:	Visual Inspection – No Suspect Materials Found	
Identification:	N/A	
Approx. quantity:	N/A	
Accessibility	N/A	<i>Assessment Score</i>
Product type:		N/A
Extent of Damage:		N/A
Surface Treatment:		N/A
Asbestos type:		N/A
Material Assessment Score:		N/A
Priority Assessment Score:		N/A
Action:	N/A	
Comments:	Modern stair nosing	

Document Name	Author	Issued by	Revision Number	Issue Date	Page No
2019	Emma Humphreys	Armour AS	0	05/07/2019	52



Item No: 38

Sample No: N/A

Location: Offices F22, F21 and F20



Material Description:	Visual Inspection – No Suspect Materials Found	
Identification:	N/A	
Approx. quantity:	N/A	
Accessibility	N/A	<i>Assessment Score</i>
Product type:		N/A
Extent of Damage:		N/A
Surface Treatment:		N/A
Asbestos type:		N/A
Material Assessment Score:		N/A
Priority Assessment Score:		N/A
Action:	N/A	
Comments:	Limited access above ceiling tiles due to insulation above tiles	

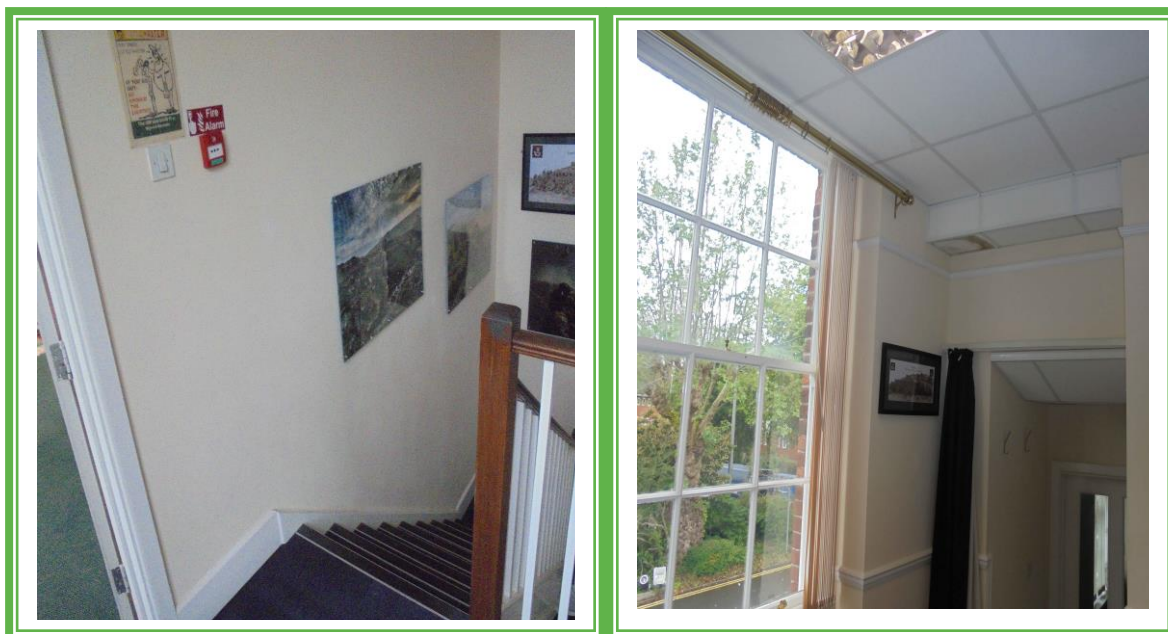
Document Name	Author	Issued by	Revision Number	Issue Date	Page No
2019	Emma Humphreys	Armour AS	0	05/07/2019	53



Item No: 39

Sample No: N/A

Location: Landing & Office F11



Material Description:	Visual Inspection – No Suspect Materials Found	
Identification:	N/A	
Approx. quantity:	N/A	
Accessibility	N/A	<i>Assessment Score</i>
Product type:		N/A
Extent of Damage:		N/A
Surface Treatment:		N/A
Asbestos type:		N/A
Material Assessment Score:		N/A
Priority Assessment Score:		N/A
Action:	N/A	
Comments:	Modern stair nosing in office. Limited access above ceiling tiles due to insulation above tiles	

Document Name	Author	Issued by	Revision Number	Issue Date	Page No
2019	Emma Humphreys	Armour AS	0	05/07/2019	54



Item No: 40

Sample No: N/A

Location: Office F19 & Corridor



Material Description:	Visual Inspection – No Suspect Materials Found	
Identification:	N/A	
Approx. quantity:	N/A	
Accessibility	N/A	<i>Assessment Score</i>
Product type:		N/A
Extent of Damage:		N/A
Surface Treatment:		N/A
Asbestos type:		N/A
Material Assessment Score:		N/A
Priority Assessment Score:		N/A
Action:	N/A	
Comments:	Modern stair nosing in corridor	

Document Name	Author	Issued by	Revision Number	Issue Date	Page No
2019	Emma Humphreys	Armour AS	0	05/07/2019	55



Item No: 41

Sample No: N/A

Location: Offices F12, F13 & F14



Material Description:	Visual Inspection – No Suspect Materials Found	
Identification:	N/A	
Approx. quantity:	N/A	
Accessibility	N/A	<i>Assessment Score</i>
Product type:		N/A
Extent of Damage:		N/A
Surface Treatment:		N/A
Asbestos type:		N/A
Material Assessment Score:		N/A
Priority Assessment Score:		N/A
Action:	N/A	
Comments:	N/A	

Document Name	Author	Issued by	Revision Number	Issue Date	Page No
2019	Emma Humphreys	Armour AS	0	05/07/2019	56



Item No: 42

Sample No: N/A

Location: Corridors x 2 – First Floor



Material Description:	Visual Inspection – No Suspect Materials Found	
Identification:	N/A	
Approx. quantity:	N/A	
Accessibility	N/A	<i>Assessment Score</i>
Product type:		N/A
Extent of Damage:		N/A
Surface Treatment:		N/A
Asbestos type:		N/A
Material Assessment Score:		N/A
Priority Assessment Score:		N/A
Action:	N/A	
Comments:	Modern stair nosing	

Document Name	Author	Issued by	Revision Number	Issue Date	Page No
2019	Emma Humphreys	Armour AS	0	05/07/2019	57



Item No: 43

Sample No: DK/4

Location: Kitchen – F15



Material Description:	Sink Pad	
Identification:	Samples – No Asbestos Detected	
Approx. quantity:	1 x Sink	
Accessibility	N/A	<i>Assessment Score</i>
Product type:		N/A
Extent of Damage:		N/A
Surface Treatment:		N/A
Asbestos type:		N/A
Material Assessment Score:		N/A
Priority Assessment Score:		N/A
Action:	N/A	
Comments:	N/A	

Document Name	Author	Issued by	Revision Number	Issue Date	Page No
2019	Emma Humphreys	Armour AS	0	05/07/2019	58



Item No: 44

Sample No: N/A

Location: WC – First Floor



Material Description:	Visual Inspection – No Suspect Materials Found	
Identification:	N/A	
Approx. quantity:	N/A	
Accessibility	N/A	<i>Assessment Score</i>
Product type:		N/A
Extent of Damage:		N/A
Surface Treatment:		N/A
Asbestos type:		N/A
Material Assessment Score:		N/A
Priority Assessment Score:		N/A
Action:	N/A	
Comments:	No access within timber boxings. Non-asbestos fibreboard ceiling above suspended ceiling	

Document Name	Author	Issued by	Revision Number	Issue Date	Page No
2019	Emma Humphreys	Armour AS	0	05/07/2019	59



Item No: 45

Sample No: N/A

Location: Landing & Stairwell



Material Description:	Visual Inspection – No Suspect Materials Found	
Identification:	N/A	
Approx. quantity:	N/A	
Accessibility	N/A	<i>Assessment Score</i>
Product type:		N/A
Extent of Damage:		N/A
Surface Treatment:		N/A
Asbestos type:		N/A
Material Assessment Score:		N/A
Priority Assessment Score:		N/A
Action:	N/A	
Comments:	Modern Stair nosing.	

Document Name	Author	Issued by	Revision Number	Issue Date	Page No
2019	Emma Humphreys	Armour AS	0	05/07/2019	60



Item No: 46

Sample No: N/A

Location: Lobby – Ground Floor



Material Description:	Visual Inspection – No Suspect Materials Found	
Identification:	N/A	
Approx. quantity:	N/A	
Accessibility	N/A	<i>Assessment Score</i>
Product type:		N/A
Extent of Damage:		N/A
Surface Treatment:		N/A
Asbestos type:		N/A
Material Assessment Score:		N/A
Priority Assessment Score:		N/A
Action:	N/A	
Comments:	N/A	

Document Name	Author	Issued by	Revision Number	Issue Date	Page No
2019	Emma Humphreys	Armour AS	0	05/07/2019	61



Item No: 47

Sample No: N/A

Location: WC – G32



Material Description:	Visual Inspection – No Suspect Materials Found	
Identification:	N/A	
Approx. quantity:	N/A	
Accessibility	N/A	<i>Assessment Score</i>
Product type:		N/A
Extent of Damage:		N/A
Surface Treatment:		N/A
Asbestos type:		N/A
Material Assessment Score:		N/A
Priority Assessment Score:		N/A
Action:	N/A	
Comments:	N/A	

Document Name	Author	Issued by	Revision Number	Issue Date	Page No
2019	Emma Humphreys	Armour AS	0	05/07/2019	62



Item No: 49

Sample No: N/A

Location: Rooms G07 & G02



Material Description:	Visual Inspection – No Suspect Materials Found	
Identification:	N/A	
Approx. quantity:	N/A	
Accessibility	N/A	<i>Assessment Score</i>
Product type:		N/A
Extent of Damage:		N/A
Surface Treatment:		N/A
Asbestos type:		N/A
Material Assessment Score:		N/A
Priority Assessment Score:		N/A
Action:	N/A	
Comments:	Modern electrics	

Document Name	Author	Issued by	Revision Number	Issue Date	Page No
2019	Emma Humphreys	Armour AS	0	05/07/2019	63



Item No: 50

Sample No: N/A

Location: Rooms G11 & G12



Material Description:	Visual Inspection – No Suspect Materials Found	
Identification:	N/A	
Approx. quantity:	N/A	
Accessibility	N/A	<i>Assessment Score</i>
Product type:		N/A
Extent of Damage:		N/A
Surface Treatment:		N/A
Asbestos type:		N/A
Material Assessment Score:		N/A
Priority Assessment Score:		N/A
Action:	N/A	
Comments:	Modern electrics	

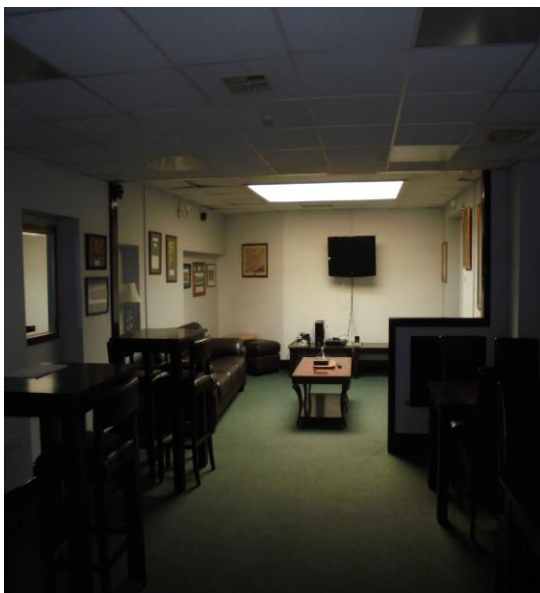
Document Name	Author	Issued by	Revision Number	Issue Date	Page No
2019	Emma Humphreys	Armour AS	0	05/07/2019	64



Item No: 58

Sample No: N/A

Location: Bar & Mess Room – G59 & G60



Material Description:	Visual Inspection – No Suspect Materials Found	
Identification:	N/A	
Approx. quantity:	N/A	
Accessibility	N/A	<i>Assessment Score</i>
Product type:		N/A
Extent of Damage:		N/A
Surface Treatment:		N/A
Asbestos type:		N/A
Material Assessment Score:		N/A
Priority Assessment Score:		N/A
Action:	N/A	
Comments:	N/A	

Document Name	Author	Issued by	Revision Number	Issue Date	Page No
2019	Emma Humphreys	Armour AS	0	05/07/2019	65



Item No: 59

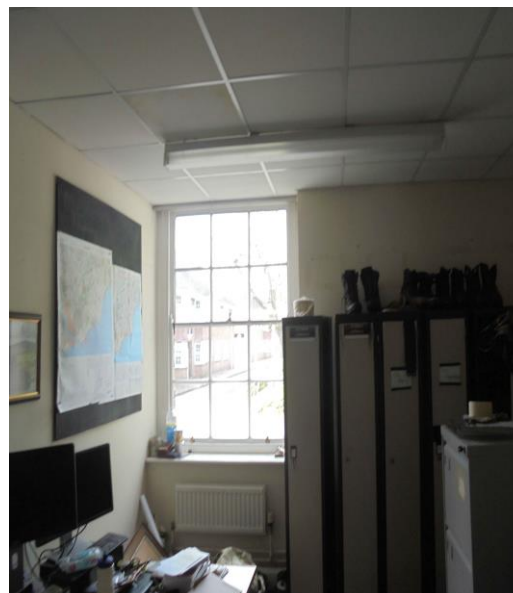
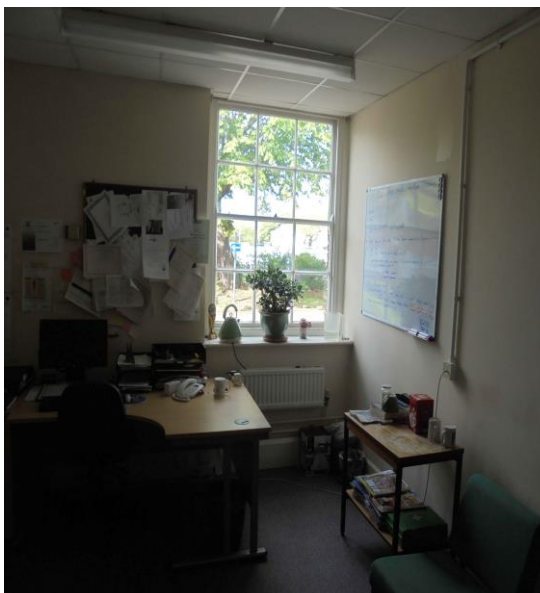
Sample No: N/A

Location: Bar Kitchen – Ground Floor



Material Description:	Sink Pad	
Identification:	Sampled – No Asbestos Detected	
Approx. quantity:	1 x Sink	
Accessibility	N/A	<i>Assessment Score</i>
Product type:		N/A
Extent of Damage:		N/A
Surface Treatment:		N/A
Asbestos type:		N/A
Material Assessment Score:		N/A
Priority Assessment Score:		N/A
Action:	N/A	
Comments:	N/A	

Document Name	Author	Issued by	Revision Number	Issue Date	Page No
2019	Emma Humphreys	Armour AS	0	05/07/2019	66

**Item No: 60****Sample No: N/A****Location: Offices G64, G63 & G61**

Material Description:	Visual Inspection – No Suspect Materials Found	
Identification:	N/A	
Approx. quantity:	N/A	
Accessibility	N/A	<i>Assessment Score</i>
Product type:		N/A
Extent of Damage:		N/A
Surface Treatment:		N/A
Asbestos type:		N/A
Material Assessment Score:		N/A
Priority Assessment Score:		N/A
Action:	N/A	
Comments:	N/A	

Document Name	Author	Issued by	Revision Number	Issue Date	Page No
2019	Emma Humphreys	Armour AS	0	05/07/2019	67



Item No: 61

Sample No: N/A

Location: Rooms G73, G72 & G71



Material Description:	Visual Inspection – No Suspect Materials Found	
Identification:	N/A	
Approx. quantity:	N/A	
Accessibility	N/A	<i>Assessment Score</i>
Product type:		N/A
Extent of Damage:		N/A
Surface Treatment:		N/A
Asbestos type:		N/A
Material Assessment Score:		N/A
Priority Assessment Score:		N/A
Action:	N/A	
Comments:	No access within timber boxings	

Document Name	Author	Issued by	Revision Number	Issue Date	Page No
2019	Emma Humphreys	Armour AS	0	05/07/2019	68



Item No: 62

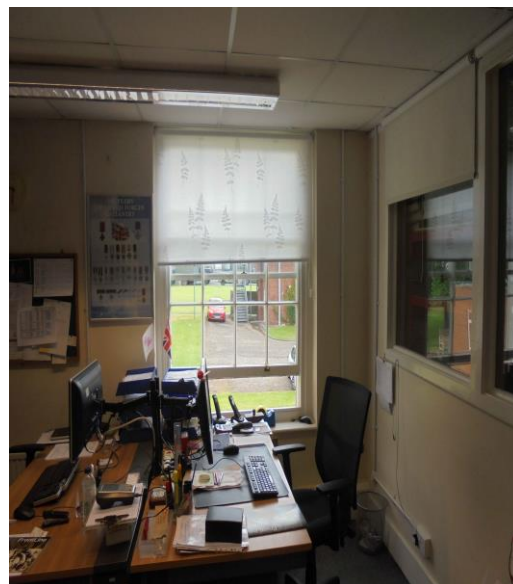
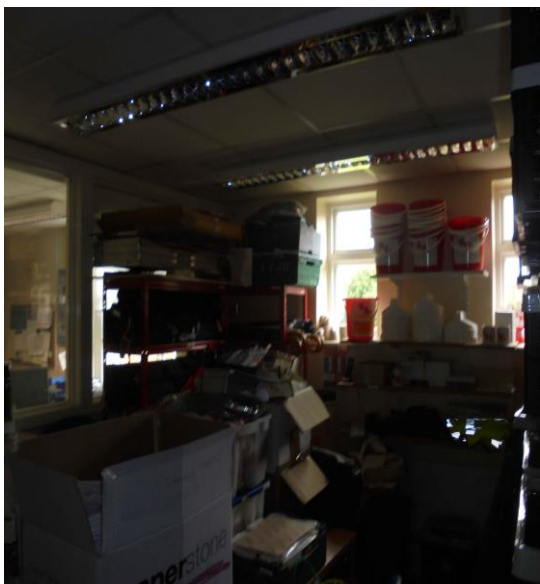
Sample No: N/A

Location: WC – F07



Material Description:	Visual Inspection – No Suspect Materials Found	
Identification:	N/A	
Approx. quantity:	N/A	
Accessibility	N/A	<i>Assessment Score</i>
Product type:		N/A
Extent of Damage:		N/A
Surface Treatment:		N/A
Asbestos type:		N/A
Material Assessment Score:		N/A
Priority Assessment Score:		N/A
Action:	N/A	
Comments:	No access within timber boxings	

Document Name	Author	Issued by	Revision Number	Issue Date	Page No
2019	Emma Humphreys	Armour AS	0	05/07/2019	69

**Item No: 63****Sample No: N/A****Location: Rooms F06 & F06B**

Material Description:	Visual Inspection – No Suspect Materials Found	
Identification:	N/A	
Approx. quantity:	N/A	
Accessibility	N/A	<i>Assessment Score</i>
Product type:		N/A
Extent of Damage:		N/A
Surface Treatment:		N/A
Asbestos type:		N/A
Material Assessment Score:		N/A
Priority Assessment Score:		N/A
Action:	N/A	
Comments:	N/A	

Document Name	Author	Issued by	Revision Number	Issue Date	Page No
2019	Emma Humphreys	Armour AS	0	05/07/2019	70



Item No: 64

Sample No: N/A

Location: Landing & Circulation – First Floor



Material Description:	Visual Inspection – No Suspect Materials Found	
Identification:	N/A	
Approx. quantity:	N/A	
Accessibility	N/A	<i>Assessment Score</i>
Product type:		N/A
Extent of Damage:		N/A
Surface Treatment:		N/A
Asbestos type:		N/A
Material Assessment Score:		N/A
Priority Assessment Score:		N/A
Action:	N/A	
Comments:	N/A	

Document Name	Author	Issued by	Revision Number	Issue Date	Page No
2019	Emma Humphreys	Armour AS	0	05/07/2019	71

**Item No: 65****Sample No: N/A****Location: Circulations x 2 and Landing – First Floor**

Material Description:	Visual Inspection – No Suspect Materials Found	
Identification:	N/A	
Approx. quantity:	N/A	
Accessibility	N/A	<i>Assessment Score</i>
Product type:		N/A
Extent of Damage:		N/A
Surface Treatment:		N/A
Asbestos type:		N/A
Material Assessment Score:		N/A
Priority Assessment Score:		N/A
Action:	N/A	
Comments:	N/A	

Document Name	Author	Issued by	Revision Number	Issue Date	Page No
2019	Emma Humphreys	Armour AS	0	05/07/2019	72

**Item No: 66****Sample No: N/A****Location: Locker Room F01 & WC**

Material Description:	Visual Inspection – No Suspect Materials Found	
Identification:	N/A	
Approx. quantity:	N/A	
Accessibility	N/A	<i>Assessment Score</i>
Product type:		N/A
Extent of Damage:		N/A
Surface Treatment:		N/A
Asbestos type:		N/A
Material Assessment Score:		N/A
Priority Assessment Score:		N/A
Action:	N/A	
Comments:	No access within timber boxings	

Document Name	Author	Issued by	Revision Number	Issue Date	Page No
2019	Emma Humphreys	Armour AS	0	05/07/2019	73

**Item No: 68****Sample No: DK/5****Location: Boiler Room**

Material Description:	Insulation Board Ceiling Tiles	
Identification:	Sampled – No Asbestos Detected	
Approx. quantity:	12M2	
Accessibility	N/A	<i>Assessment Score</i>
Product type:		N/A
Extent of Damage:		N/A
Surface Treatment:		N/A
Asbestos type:		N/A
Material Assessment Score:		N/A
Priority Assessment Score:		N/A
Action:	N/A	
Comments:	N/A	

Document Name	Author	Issued by	Revision Number	Issue Date	Page No
2019	Emma Humphreys	Armour AS	0	05/07/2019	74

**Item No: 69****Sample No: DK/6****Location: Boiler Room**

Material Description:	Gaskets	
Identification:	Sampled – No Asbestos Detected	
Approx. quantity:	30+ Gaskets	
Accessibility	N/A	<i>Assessment Score</i>
Product type:		N/A
Extent of Damage:		N/A
Surface Treatment:		N/A
Asbestos type:		N/A
Material Assessment Score:		N/A
Priority Assessment Score:		N/A
Action:	N/A	
Comments:	N/A	

Document Name	Author	Issued by	Revision Number	Issue Date	Page No
2019	Emma Humphreys	Armour AS	0	05/07/2019	75

**Item No: 71****Sample No: N/A****Location: Rooms G14 & G15**

Material Description:	Visual Inspection – No Suspect Materials Found	
Identification:	N/A	
Approx. quantity:	N/A	
Accessibility	N/A	<i>Assessment Score</i>
Product type:		N/A
Extent of Damage:		N/A
Surface Treatment:		N/A
Asbestos type:		N/A
Material Assessment Score:		N/A
Priority Assessment Score:		N/A
Action:	N/A	
Comments:	N/A	

Document Name	Author	Issued by	Revision Number	Issue Date	Page No
2019	Emma Humphreys	Armour AS	0	05/07/2019	76

Section 6: Survey Objectives

Instructions were received from Sue Morrell of Wessex RFCA to carry out a Management asbestos survey at Wyvern Barracks, Barrack Road, Exeter, Devon, EX2 6AE in accordance with HSG264 and Armour Analytical's quality procedures.

The survey was carried out between 19th and 21st June 2019 by David Kelly with the objective of facilitating a Management report.

This Management survey is characterised as a 'Visual Inspection Sampling and Identification Survey' in HSG264. This type of survey is used to locate and describe, so far as is reasonably practicable, all asbestos containing materials (ACMs) in the building and will by its nature involve the partial destruction of the building's fabric as access is gained to all areas. A full sampling programme is undertaken to identify possible ACMs and estimate the extent of ACMs reported.

The objective of this survey report is to identify, so far as is reasonably practicable, the location, extent, product type and composition of ACMS within the building to enable the building occupants to put management and remedial procedures in place.

Document Name	Author	Issued by	Revision Number	Issue Date	Page No
2019	Emma Humphreys	Armour AS	0	05/07/2019	77

Section 7: Survey Techniques

Each floor, room and area within the scope was systematically inspected for suspect materials thought or known to contain asbestos and where such materials were encountered their location, extent, and composition were recorded.

Where materials of a similar nature exist, to those previously sampled, and a reasoned argument can be made that their composition is likely to be identical further physical sampling was not undertaken.

Photographs were taken of all sample locations, unless otherwise stated.

The analysis of suspect ACMs was undertaken by a UKAS accredited laboratory using the analytical method detailed in *HSG248, Appendix 2 -Asbestos: The analysts' guide for sampling, analysis and clearance procedures*.

Document Name	Author	Issued by	Revision Number	Issue Date	Page No
2019	Emma Humphreys	Armour AS	0	05/07/2019	78

Section 8: Survey Caveat

This report is based upon a management report inspection of an unfamiliar site. During the course of the survey all reasonable efforts were made to identify the physical presence of materials containing asbestos within the building.

A Management Survey is a non-intrusive survey, meaning that access within the fabric of the building is limited. The survey does not include access to the following areas (unless agreed beforehand with the Client and provisions are put in place):

- Within wall or ceiling construction;
- Under fixed flooring;
- Within non-openable boxings;
- Within live electrics, boilers or machinery;
- Where access/visibility is limited in an area due to stored items, furniture or services;
- Areas where there is no safe access to inspect such as floor ducts, lift shafts and loft spaces with no crawlboards;
- High level areas that are too high to safely inspect.
- Within pipework insulation throughout building as this would affect the integrity of services.

Any intrusive works carried out within the building must first be subject to a Refurbishment Asbestos Survey.

This report will be restricted to the areas that fall within the scope of works for project and will not take into account any area's that do not fall within the scope. Any asbestos that is identified within this report will need to be added to the buildings existing information and should not form the basis for a management survey. This survey will not include priority assessments nor will it include a register.

This survey considered the construction of the building, associated fixtures & fittings and associated structures and in no way should it be considered as a ground investigation report.

Services should be disconnected prior to commencement of a Management survey; however, where plant and/or electrical installations are live or appear to be live then these will not be accessed.

This survey report is not a bill of quantities.

Document Name	Author	Issued by	Revision Number	Issue Date	Page No
2019	Emma Humphreys	Armour AS	0	05/07/2019	79

Section 9: Survey Notes

This report has been written with reference to the various Guidance Notes etc, issued, and current at the date of this report and describes circumstances at the site on the date the investigation took place.

Where similar items exist in the building, only one or two samples have been taken to ascertain the material content. It was assumed that similar products were of the same material.

Any person undertaking work within the buildings should be told of the presence of asbestos. This briefing also applies to any other person associated with the site, including staff, sub-contractors and others.

The drawings in the report are not to scale and are illustrative only to indicate approximate locations. The descriptions used are for location identification purposes.

All the recommendations described in this report are based upon assumptions made after consideration of the type of material, condition of the material, its location, analysis result and type of use the area is thought to be subjected to. However, statutory authorities or others could require amendments based on local knowledge, change in legislation, change in use or indeed other conditions or criteria.

Samples taken from floor tiles (or similar material) may include a bitumen adhesive as part of the sample. It is known that some proprietary brands of bitumen have an asbestos content and this will be included as an integral part of the bulk sample unless otherwise stated.

Document Name	Author	Issued by	Revision Number	Issue Date	Page No
2019	Emma Humphreys	Armour AS	0	05/07/2019	80

Section 10: Material Assessment Algorithm

Variable	Score	Examples
Installation / Product type	1	Vinyl, 'Bakelite', Cement
	2	Asbestos insulating board, paper, rope
	3	Pipe insulation, spray coating, friable debris
Condition / damage	0	Good
	1	Slight / minor damage
	2	Moderate damage – breakage to surface treatment
	3	Major damage – smashed or exposed material
Surface treatment	0	Non-friable e.g. vinyl
	1	Enclosed insulation, encapsulated AIB
	2	Unsealed AIB, encapsulated insulation
	3	Unsealed insulation or spray coating
Asbestos type	1	Chrysotile
	2	Amosite & other amphiboles
	3	Crocidolite

The scores from each of the four sections are added together to produce a risk score:

Risk score	Risk assessment
10 or more	High risk
7 – 9	Medium risk
5 – 6	Low risk
4 & below	Negligible risk

Document Name	Author	Issued by	Revision Number	Issue Date	Page No
2019	Emma Humphreys	Armour AS	0	05/07/2019	81



Section 11: Certificates of Bulk Analysis



Our Ref: J169849 FI: 6
Your Ref: 2481
Date: 26/06/2019

ENVIROCHEM
Analytical Laboratories Ltd.
12 The Gardens
Broadcut, Fareham
Hampshire
PO16 8SS



Tel: (01329) 287777
Fax: (01329) 287755
www.envirochem.co.uk
office@envirochem.co.uk

Asbestos Fibre Identification Report

Client: Armour Analytical Services Ltd
Admirals Yard, Station Road, Patchway, Bristol, BS34 6LR
Site Address: Building 7, Wyvern Barrack, Exeter, -
Sampled By: Armour Analytical Services Ltd
Date sampled/received: 25th June 2019
Date analysed: 26th June 2019
Analyst/s: Ewelina Kowalczyk Pariyar
Analysis Location: 12 The Gardens, Broadcut, Fareham, Hampshire, PO16 8SS

ANALYTICAL PROCEDURE

Fibre identification was carried out in accordance with the documented 'in-house' methods based on the HSE Guidance Note HSG 248. These employed stereo microscopy, polarized microscopy and dispersion staining techniques.

RESULTS

Sample No.	Sample Ref.	Location	Asbestos Detected	Asbestos Type
1	BS559455	GF. Corridor. Insulating board ceiling tiles	No	
2	BS559456	Main lobby and stairwell. GF. Gaskets	No	
3	BS559457	Office and kitchen. Sink pad	No	
4	BS559458	Kitchen. Sink pad	No	

NOTES:

1. Samples were examined for the presence of 6 types of asbestos fibre: crocidolite (blue), amosite (brown), chrysotile (white), actinolite, anthophyllite and tremolite.
2. Samples collected by the client are analysed using information provided by the client. The sample collected by the client the date of receipt is deemed to be the date of the sample.
3. Identification is a UKAS accredited laboratory for sampling and identification of asbestos containing materials.
4. Comments, observations and opinions are made on the basis of UKAS accreditation.
5. The analytical method in the HSG248 does not quantify the amount of asbestos present, therefore UKAS accreditation does not permit quantification.
6. If, during fibre identification, only 1 or 2 fibres are seen and identified as asbestos, then the term 'trace asbestos identified' is used.

SIGNATURE: *Kowalczyk*

Authorised signatory

PRINT NAME: Ewelina Kowalczyk Pariyar

Reg. No. 2378228 England. Registered Office: Envirochem, 12 The Gardens, Broadcut, Fareham, Hampshire, PO16 8SS.

Page 1 of 2

Document Name	Author	Issued by	Revision Number	Issue Date	Page No
2019	Emma Humphreys	Armour AS	0	05/07/2019	82



ARMOUR
ANALYTICAL SERVICES



Our Ref: J169849 FI: 6
Your Ref: 2481
Date: 26/06/2019

ENVIROCHEM
Analytical Laboratories Ltd.
12 The Gardens
Broadcut, Fareham
Hampshire
PO16 8SS



1227
Tel: (01329) 287777
Fax: (01329) 287755
www.envirochem.co.uk
office@envirochem.co.uk

Asbestos Fibre Identification Report

Client: Armour Analytical Services Ltd
Admirals Yard, Station Road, Patchway, Bristol, BS34 6LR
Site Address: Building 7, Wyvern Barrack, Exeter, -
Sampled By: Armour Analytical Services Ltd
Date sampled/received: 25th June 2019
Date analysed: 26th June 2019
Analyst/s: Ewelina Kowalczyk Pariyar
Analysis Location: 12 The Gardens, Broadcut, Fareham, Hampshire, PO16 8SS

ANALYTICAL PROCEDURE

Fibre identification was carried out in accordance with the documented 'in-house' methods based on the HSE Guidance Note HSG 248. These employed stereo microscopy, polarized microscopy and dispersion staining techniques.

RESULTS

Sample No.	Sample Ref.	Location	Asbestos Detected	Asbestos Type
5	BS559459	Boiler room. Gaskets	No	
6	BS559460	Boiler room. Insulating board ceiling panels	No	

NOTES:

1. Samples were examined for the presence of 6 types of asbestos fibre: amphibole (blue), asbestos (brown), chrysotile (white), actinolite, actinolite and tremolite.
2. Samples collected by the client are evaluated using information provided by the client. For samples collected by the client the date of receipt is deemed to be the same as the date sampled.
3. Envirochem is a UKAS accredited laboratory for sampling and identification of asbestos containing materials.
4. Comments, observations and opinions are outside the scope of UKAS accreditation.
5. The analytical method in the HSG248 does not quantify the amount of asbestos present, therefore UKAS accreditation does not permit quantification.
6. If, during fibre identification, only 1 or 2 fibres are seen and identified as asbestos, then the term 'trace asbestos identified' is used.

SIGNATURE: *Kowalczyk*

Authorised signatory

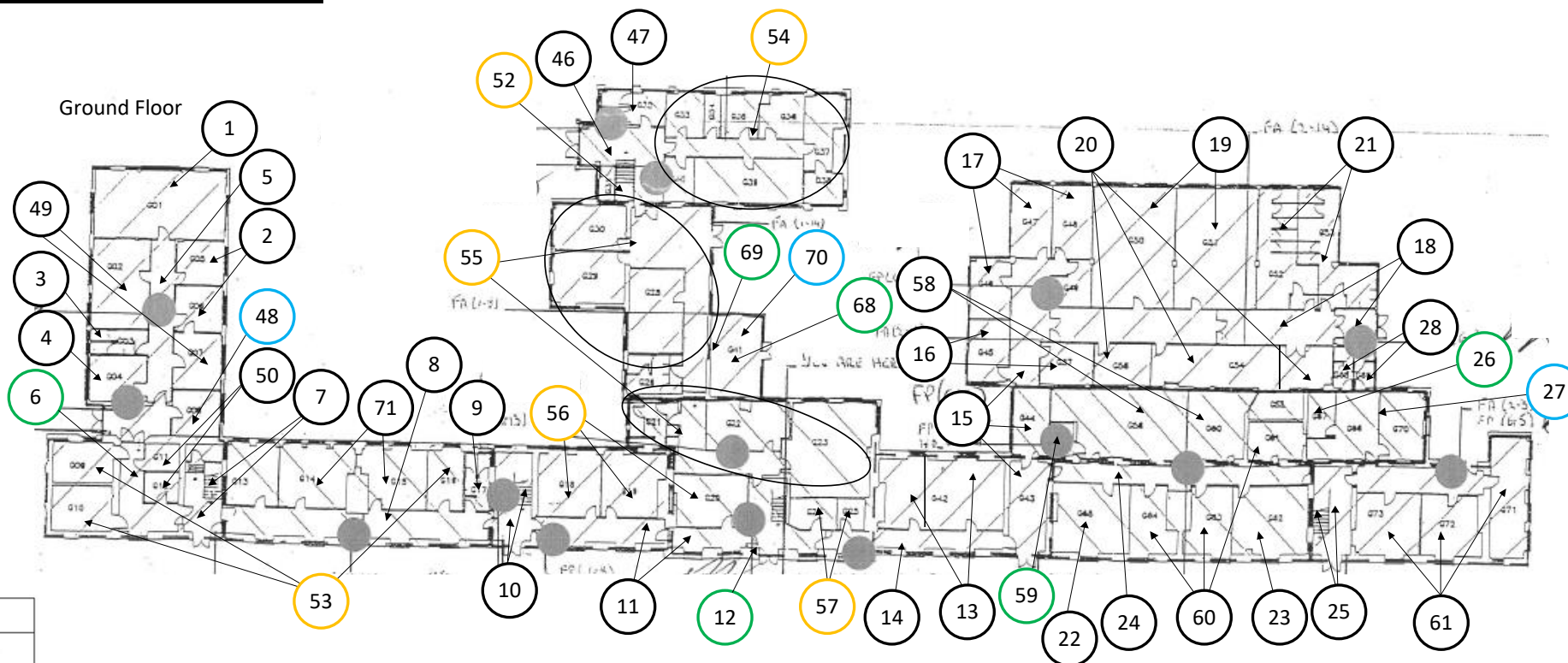
PRINT NAME: Ewelina Kowalczyk Pariyar






Reg. No. 2378228 England. Registered Office: Envirochem, 12 The Gardens, Broadcut, Fareham, Hampshire, PO16 8SS.

Page 2 of 2

Document Name	Author	Issued by	Revision Number	Issue Date	Page No
2019	Emma Humphreys	Armour AS	0	05/07/2019	83

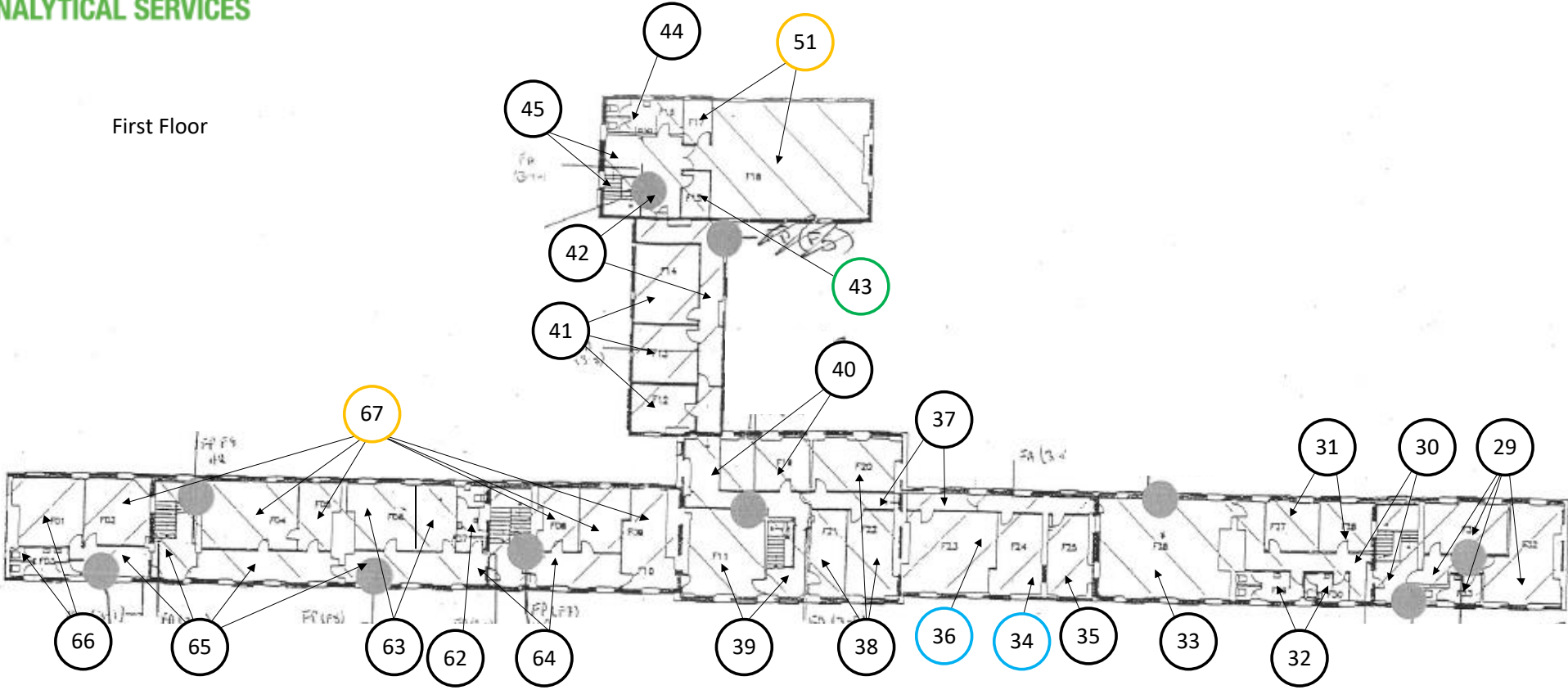
Section 12: Site Plan








KEY	
	Visual Inspection
	ACM's Detected (Positive Items)
	No ACM's Detected (Negative Items)
	Presumed to Contain ACM's
	No Access

Document Name	Author	Issued by	Revision Number	Issue Date	Page No
2019	Emma Humphreys	Armour AS	0	05/07/2019	84

First Floor



KEY	
	Visual Inspection
	ACM's Detected (Positive Items)
	No ACM's Detected (Negative Items)
	Presumed to Contain ACM's
	No Access

Document Name	Author	Issued by	Revision Number	Issue Date	Page No
2019	Emma Humphreys	Armour AS	0	05/07/2019	85



ARMOUR
ANALYTICAL SERVICES

I the surveyor can confirm that this report is accurate to my findings onsite and this survey has been Content checked by myself.

Checked by: David Kelly

Date: 04/07/2019

I the Admin Manager can confirm that this report is accurate to the paperwork received and this survey has been quality checked by myself.

Checked by: Emma Humphreys

Date: 05.07.2019

Report Compiled By

Armour Analytical Services Ltd, Admirals Yard, Station Road, Bristol, BS34 6LR

Document Name	Author	Issued by	Revision Number	Issue Date	Page No
2019	Emma Humphreys	Armour AS	0	05/07/2019	86