



ARMOUR
ANALYTICAL SERVICES

Project Number 2481

**Management
Asbestos Survey Report**

**2152 North Bristol Squadron, Filton, Bristol,
BS7 0SL**



Working in Partnership with Shield Environmental Services



Document Name	Author	Issued by	Revision Number	Issue Date	Page No
2019	Emma Humphreys	Armour AS	0	09/09/2019	1

Contents

Section	
1	Contacts & Authorisation
2	Executive Summary
3	Site Description & Survey Information
4	Positive and Presumed Photos Sheets
5	Negative Photos Sheets
6	Survey Objectives
7	Survey Techniques
8	Survey Caveat
9	Survey Notes
10	Material Assessment Algorithm
11	Certificates of Bulk Analysis
12	Site Plan

Document Name	Author	Issued by	Revision Number	Issue Date	Page No
2019	Emma Humphreys	Armour AS	0	09/09/2019	2



Section 1: Contact Details

Client Details:		Instructing Party:	
Wessex RFCA Mount House Mount Street Taunton TA1 3QE		Shield Environmental Shield House Caxton Business Park Crown Way Bristol BS30 8XJ	
Contact Name:	Sue Morrell	Contact Name:	Chloe Smith
Tel: 01823250115	Fax: N/A	Tel: 01173012650	Fax: N/A

Site Address:		Report Author:	
Wyvern Barracks Barrack Road Exeter Devon EX2 6AE		Armour Analytical Services Admirals Yard Station Road Bristol BS34 6LR	
Contact Name:	Dash	Contact Name:	David Kelly
Tel: 07802201510	Fax: N/A	Mobile: 07769707519	

Lead Surveyor's Name:	Lead Surveyor's Authorising Signature:
D. Kelly	

Document Name	Author	Issued by	Revision Number	Issue Date	Page No
2019	Emma Humphreys	Armour AS	0	09/09/2019	3

Section 2: Executive Summary

Sample Number	Sample Type	Location	Analysis
1	Panel Behind Heater	Concorde Building – Office	N.A.D.I.S
2	Panels Behind and Below Heater	Concorde Building - Classrooms	N.A.D.I.S
3	Textured Coating to Ceiling	Cadet Mess – Lounge and Lobby	N.A.D.I.S
4	Textured Coating to Ceiling	Cadets Mess – Mess Room	N.A.D.I.S
5	Cement Undercloaking	External - Link Trainer Facility	Chrysotile
6	Profiled Cement Roof	External - Admin Building	Chrysotile/Crocidolite
7	Cement Downpipes	External – Admin Building	Chrysotile
8	Cement Roof Edging	External – Admin Building	Chrysotile
9	Floor Tiles and Adhesive	Admin Block – Comms and Mess Rooms	Chrysotile
10	Textured Coating to Ceiling	Admin Block – Corridor	N.A.D.I.S
11	Toilet Seats	WC's x 3	N.A.D.I.S
12	Panels Behind Heaters	Beluga Parade Hall	N.A.D.I.S

N.A.D.I.S – No Asbestos Detected in Sample

A.D – Asbestos Detected

Document Name	Author	Issued by	Revision Number	Issue Date	Page No
2019	Emma Humphreys	Armour AS	0	09/09/2019	4

The following items have been Presumed to be Asbestos Containing Materials as they were not accessible at the time of the survey:

Item 4 – Concorde Building – Office – Components within Heater – Unable to sample as presumed live

Item 12 – Cadet Mess – Old Dimplex Heater - Unable to sample as presumed live

Item 21 - Admin Block – Comms Room and Mess Room – Heaters - Unable to sample as presumed live

Item 28 – Admin Building – Corridor – Floor Tiles and Adhesive Under Lino – No access

Item 37 – Beluga Parade Hall – Hall – Heaters - Unable to sample as presumed live

The presence of asbestos in these areas cannot be ascertained at this time. If any works are to be carried out in these areas in the future, then these works should be approached cautiously.

In accordance with current legislation, any suspect materials encountered in these areas are to be assumed to contain asbestos until proven otherwise. This will normally involve cessation of works in the affected area.

Document Name	Author	Issued by	Revision Number	Issue Date	Page No
2019	Emma Humphreys	Armour AS	0	09/09/2019	5

Section 3: Site Description & Survey Information

Brief description on the general building construction

Seven huts of various construction, with a mix of felt, tiled and profiled roofs

Caveat for no access areas

No access within the heaters as presumed live.
 No access to the floor tiles in the Admin Building corridor as per item 28

EXTERNAL MATERIALS

Roof Type	Pitched, Felt
Roof Materials	Profiled Cement, Profiled Metal, Felt
Soffits	Timber
Fascia	Timber
Walls	Timber Cladding, Block, Concrete
Verge Under cloaking	Cement
Guttering	Cement, Plastic
Downpipes	Cement, Plastic
Window/Door frames	Timber, Aluminum
Other Materials	N/A

INTERNAL MATERIALS

Loft Insulation	N/A
Roof Underlining	Non-Asbestos Felt
Ceilings	Plasterboard, Wood, Suspended
Walls <i>Internal</i>	Plasterboard, Brick, Wood
Floors	Tiles, Carpet, Lino, Screed, Timber
Doors/Frames	Timber
Pipework/Insulation	N/A
Boxings	Timber
Boiler Make	N/A
Flue Pipes	N/A
Storage Heaters	Electric Heaters
Electrical Boxes/Machinery	Modern Boxes
Ducting/Risers	N/A
Stairs	N/A
Lift Shafts	N/A
Other Materials	N/A

Document Name	Author	Issued by	Revision Number	Issue Date	Page No
2019	Emma Humphreys	Armour AS	0	09/09/2019	6

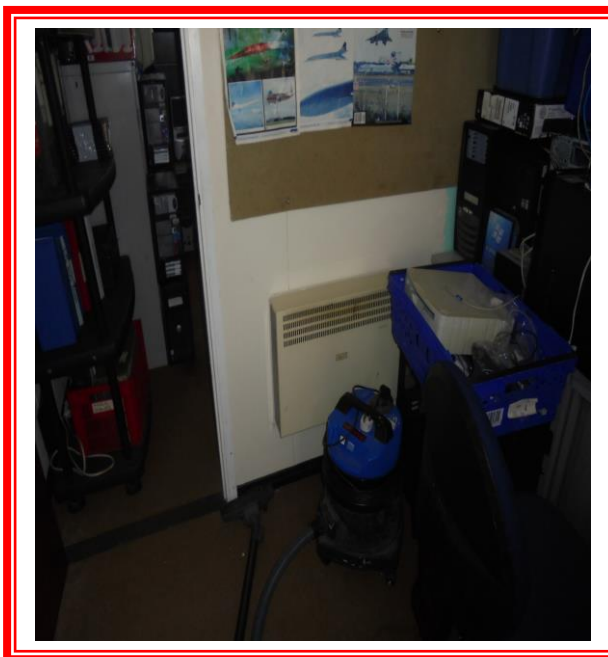


Section 4: Positive and Presumed Photos Sheets

Item No: 4

Sample No: N/A

Location: Concord Building - Office



Material Description:	Components within Heater	
Identification:	Presumed to Contain Asbestos	
Approx. quantity:	X 1 Heater	
Accessibility	Low	<i>Assessment Score</i>
Product type:	No Access	2
Extent of Damage:	No Access	2
Surface Treatment:	No Access	2
Asbestos type:	No Access	2
Material Assessment Score:		8
Priority Assessment Score:		Medium
Action:	Manage	
Comments:	No access to inspect as presumed live	

Document Name	Author	Issued by	Revision Number	Issue Date	Page No
2019	Emma Humphreys	Armour AS	0	09/09/2019	7



Item No: 12

Sample No: N/A

Location: Cadets Mess – Mess Room



Material Description:	Old Dimplex Heater	
Identification:	Presumed to Contain Asbestos	
Approx. quantity:	X 2 Heater's	
Accessibility	Low	<i>Assessment Score</i>
Product type:	No Access	2
Extent of Damage:	No Access	2
Surface Treatment:	No Access	2
Asbestos type:	No Access	2
Material Assessment Score:		8
Priority Assessment Score:		Medium
Action:	Manage	
Comments:	No access to inspect as presumed live	

Document Name	Author	Issued by	Revision Number	Issue Date	Page No
2019	Emma Humphreys	Armour AS	0	09/09/2019	8



Item No: 13

Sample No: 5

Location: External – Link Trainer Facility



Material Description:	Cement Undercloaking	
Identification:	Sampled – Asbestos Detected	
Approx. quantity:	8LM	
Accessibility	Low	Assessment Score
Product type:	Cement	1
Extent of Damage:	Minor	1
Surface Treatment:	Unsealed	1
Asbestos type:	Chrysotile	1
Material Assessment Score:		4
Priority Assessment Score:		Negligible
Action:	Manage	
Comments:	N/A	

Document Name	Author	Issued by	Revision Number	Issue Date	Page No
2019	Emma Humphreys	Armour AS	0	09/09/2019	9

**Item No: 15****Sample No: 6****Location: External – Admin Building**

Material Description:	Profiled Cement Roof	
Identification:	Sampled – Asbestos Detected	
Approx. quantity:	100M2	
Accessibility	Low	<i>Assessment Score</i>
Product type:	Cement	1
Extent of Damage:	Minor	1
Surface Treatment:	Unsealed	1
Asbestos type:	Chrysotile/Crocidolite	3
Material Assessment Score:		6
Priority Assessment Score:		Low
Action:	Manage	
Comments:	N/A	

Document Name	Author	Issued by	Revision Number	Issue Date	Page No
2019	Emma Humphreys	Armour AS	0	09/09/2019	10

**Item No: 16****Sample No: N/A****Location: External – Admin Building**

Material Description:	Cement Guttering	
Identification:	As Per Sample 7– Asbestos Detected	
Approx. quantity:	28LM	
Accessibility	Low	<i>Assessment Score</i>
Product type:	Cement	1
Extent of Damage:	Minor	1
Surface Treatment:	Unsealed	1
Asbestos type:	Chrysotile	1
Material Assessment Score:		4
Priority Assessment Score:		Negligible
Action:	Manage	
Comments:	N/A	

Document Name	Author	Issued by	Revision Number	Issue Date	Page No
2019	Emma Humphreys	Armour AS	0	09/09/2019	11

**Item No: 17****Sample No: 7****Location: External – Admin Building**

Material Description:	Cement Downpipes	
Identification:	Sampled – Asbestos Detected	
Approx. quantity:	X 4 (12LM in Total)	
Accessibility	Medium	<i>Assessment Score</i>
Product type:	Cement	1
Extent of Damage:	Minor	1
Surface Treatment:	Unsealed	1
Asbestos type:	Chrysotile	1
Material Assessment Score:		4
Priority Assessment Score:		Negligible
Action:	Manage	
Comments:	N/A	

Document Name	Author	Issued by	Revision Number	Issue Date	Page No
2019	Emma Humphreys	Armour AS	0	09/09/2019	12

**Item No: 18****Sample No: 8****Location: External – Admin Building**

Material Description:	Cement Roof Edging	
Identification:	Sampled – Asbestos Detected	
Approx. quantity:	14LM	
Accessibility	Low	<i>Assessment Score</i>
Product type:	Cement	1
Extent of Damage:	Minor	1
Surface Treatment:	Unsealed	1
Asbestos type:	Chrysotile	1
Material Assessment Score:		4
Priority Assessment Score:		Negligible
Action:	Manage	
Comments:	N/A	

Document Name	Author	Issued by	Revision Number	Issue Date	Page No
2019	Emma Humphreys	Armour AS	0	09/09/2019	13

**Item No: 19****Sample No: N/A****Location: External – Admin Building**

Material Description:	Profiled Cement Wall Cladding	
Identification:	As Sample 6 – Asbestos Detected	
Approx. quantity:	20M2	
Accessibility	Low	<i>Assessment Score</i>
Product type:	Cement	1
Extent of Damage:	Minor	1
Surface Treatment:	Unsealed	1
Asbestos type:	Chrysotile	1
Material Assessment Score:		4
Priority Assessment Score:		Negligible
Action:	Manage	
Comments:	N/A	

Document Name	Author	Issued by	Revision Number	Issue Date	Page No
2019	Emma Humphreys	Armour AS	0	09/09/2019	14



Item No: 20

Sample No: 9

Location: Admin Building – Comms and Mess Rooms



Material Description:	Floor Tiles and Adhesive Under Carpet	
Identification:	Sampled – Asbestos Detected	
Approx. quantity:	40M2	
Accessibility	Low	<i>Assessment Score</i>
Product type:	Composite	1
Extent of Damage:	Minor	1
Surface Treatment:	Non-Friable	0
Asbestos type:	Chrysotile	1
Material Assessment Score:		3
Priority Assessment Score:		Negligible
Action:	Manage	
Comments:	Non-Asbestos fibreboard ceiling above suspended ceilings	

Document Name	Author	Issued by	Revision Number	Issue Date	Page No
2019	Emma Humphreys	Armour AS	0	09/09/2019	15



Item No: 21

Sample No: N/A

Location: Admin Block – Comms and Mess Rooms



Material Description:	Components within Heaters	
Identification:	Presumed to Contain Asbestos	
Approx. quantity:	X 3 Heaters	
Accessibility	Low	<i>Assessment Score</i>
Product type:	No Access	2
Extent of Damage:	No Access	2
Surface Treatment:	No Access	2
Asbestos type:	No Access	2
Material Assessment Score:		8
Priority Assessment Score:		Medium
Action:	Manage	
Comments:	Unable to sample as presumed live	

Document Name	Author	Issued by	Revision Number	Issue Date	Page No
2019	Emma Humphreys	Armour AS	0	09/09/2019	16



Item No: 22

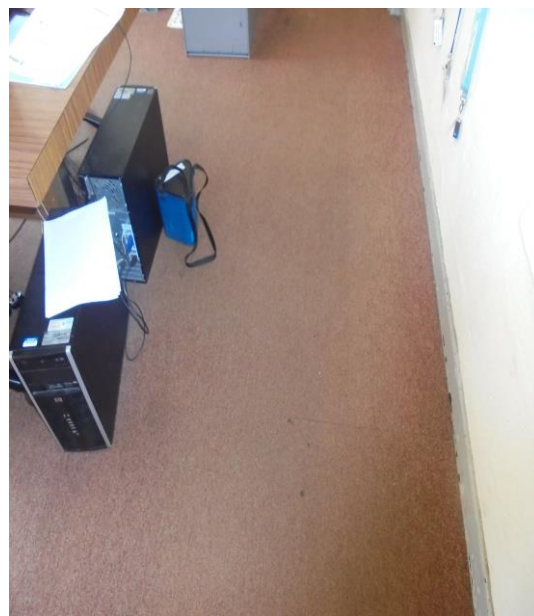
Sample No: N/A

Location: Admin Block – Stores x 2



Material Description:	Floor Tiles and Adhesive Under Carpet	
Identification:	As Per Sample 9 – Asbestos Detected	
Approx. quantity:	24M2	
Accessibility	Low	<i>Assessment Score</i>
Product type:	Composite	1
Extent of Damage:	Minor	1
Surface Treatment:	Non-Friable	0
Asbestos type:	Chrysotile	1
Material Assessment Score:		3
Priority Assessment Score:		Negligible
Action:	Manage	
Comments:	N/A	

Document Name	Author	Issued by	Revision Number	Issue Date	Page No
2019	Emma Humphreys	Armour AS	0	09/09/2019	17

**Item No: 23****Sample No: N/A****Location: Admin Building – Offices x 3**

Material Description:	Floor Tiles and Adhesive Under Carpet	
Identification:	As Per Sample 9 – Asbestos Detected	
Approx. quantity:	40M2	
Accessibility	Low	<i>Assessment Score</i>
Product type:	Composite	1
Extent of Damage:	Minor	1
Surface Treatment:	Non-Friable	0
Asbestos type:	Chrysotile	1
Material Assessment Score:		3
Priority Assessment Score:		Negligible
Action:	Manage	
Comments:	Non-Asbestos Fiberboard wall panels and ceiling above suspended ceiling	

Document Name	Author	Issued by	Revision Number	Issue Date	Page No
2019	Emma Humphreys	Armour AS	0	09/09/2019	18

**Item No: 25****Sample No: N/A****Location: Admin Building – Corridor**

Material Description:	Floor Tiles and Adhesive Under Lino	
Identification:	Presumed to Contain Asbestos	
Approx. quantity:	7M2	
Accessibility	Low	<i>Assessment Score</i>
Product type:	No Access	1
Extent of Damage:	No Access	1
Surface Treatment:	No Access	0
Asbestos type:	No Access	1
Material Assessment Score:		3
Priority Assessment Score:		Negligible
Action:	Manage	
Comments:	No access under the lino but presumed to be the same tiles as the rest of the building	

Document Name	Author	Issued by	Revision Number	Issue Date	Page No
2019	Emma Humphreys	Armour AS	0	09/09/2019	19

**Item No: 37****Sample No: N/A****Location: Beluga Parade Hall - Hall**

Material Description:	Components within Heater	
Identification:	Presumed to Contain Asbestos	
Approx. quantity:	X 3 Heaters	
Accessibility	Low	<i>Assessment Score</i>
Product type:	No Access	2
Extent of Damage:	No Access	2
Surface Treatment:	No Access	2
Asbestos type:	No Access	2
Material Assessment Score:		8
Priority Assessment Score:		Medium
Action:	Manage	
Comments:	N/A	

Document Name	Author	Issued by	Revision Number	Issue Date	Page No
2019	Emma Humphreys	Armour AS	0	09/09/2019	20



Section 5: Negative Photos Sheets

Item No: 1

Sample No: N/A

Location: External – Concorde Building



Material Description:	Visual Inspection – No Suspect Materials Found	
Identification:	N/A	
Approx. quantity:	N/A	
Accessibility	N/A	<i>Assessment Score</i>
Product type:		N/A
Extent of Damage:		N/A
Surface Treatment:		N/A
Asbestos type:		N/A
Material Assessment Score:		N/A
Priority Assessment Score:		N/A
Action:	N/A	
Comments:	N/A	

Document Name	Author	Issued by	Revision Number	Issue Date	Page No
2019	Emma Humphreys	Armour AS	0	09/09/2019	21

**Item No: 2****Sample No: N/A****Location: Concorde Building - Lobby**

Material Description:	Visual Inspection – No Suspect Materials Found	
Identification:	N/A	
Approx. quantity:	N/A	
Accessibility	N/A	<i>Assessment Score</i>
Product type:		N/A
Extent of Damage:		N/A
Surface Treatment:		N/A
Asbestos type:		N/A
Material Assessment Score:		N/A
Priority Assessment Score:		N/A
Action:	N/A	
Comments:	N/A	

Document Name	Author	Issued by	Revision Number	Issue Date	Page No
2019	Emma Humphreys	Armour AS	0	09/09/2019	22



Item No: 3

Sample No: 1

Location: Concorde Building – Office



Material Description:	Panel Behind Heater	
Identification:	Sampled – No Asbestos Detected	
Approx. quantity:	<1M2	
Accessibility	N/A	<i>Assessment Score</i>
Product type:		N/A
Extent of Damage:		N/A
Surface Treatment:		N/A
Asbestos type:		N/A
Material Assessment Score:		N/A
Priority Assessment Score:		N/A
Action:	N/A	
Comments:	N/A	

Document Name	Author	Issued by	Revision Number	Issue Date	Page No
2019	Emma Humphreys	Armour AS	0	09/09/2019	23



Item No: 5

Sample No: N/A

Location: Concorde Building – Store



Material Description:	Visual Inspection – No Suspect Materials Found	
Identification:	N/A	
Approx. quantity:	N/A	
Accessibility	N/A	<i>Assessment Score</i>
Product type:		N/A
Extent of Damage:		N/A
Surface Treatment:		N/A
Asbestos type:		N/A
Material Assessment Score:		N/A
Priority Assessment Score:		N/A
Action:	N/A	
Comments:	Modern Electrics in room	

Document Name	Author	Issued by	Revision Number	Issue Date	Page No
2019	Emma Humphreys	Armour AS	0	09/09/2019	24



Item No: 6

Sample No: 2

Location: Concorde Building – Classroom 1 and 2



Material Description:	Panels behind and below heater	
Identification:	Sampled – No Asbestos Detected	
Approx. quantity:	X 2 Heaters	
Accessibility	N/A	<i>Assessment Score</i>
Product type:		N/A
Extent of Damage:		N/A
Surface Treatment:		N/A
Asbestos type:		N/A
Material Assessment Score:		N/A
Priority Assessment Score:		N/A
Action:	N/A	
Comments:	Non-Asbestos Heaters	

Document Name	Author	Issued by	Revision Number	Issue Date	Page No
2019	Emma Humphreys	Armour AS	0	09/09/2019	25



Item No: 7

Sample No: N/A

Location: External – Cadets Mess



Material Description:	Visual Inspection – No Suspect Materials Found	
Identification:	N/A	
Approx. quantity:	N/A	
Accessibility	N/A	<i>Assessment Score</i>
Product type:		N/A
Extent of Damage:		N/A
Surface Treatment:		N/A
Asbestos type:		N/A
Material Assessment Score:		N/A
Priority Assessment Score:		N/A
Action:	N/A	
Comments:	N/A	

Document Name	Author	Issued by	Revision Number	Issue Date	Page No
2019	Emma Humphreys	Armour AS	0	09/09/2019	26



Item No: 8

Sample No: 3

Location: Cadet Mess – Lounge and Lobby



Material Description:	Textured Coating to Ceilings	
Identification:	Sampled – No Asbestos Detected	
Approx. quantity:	16M2	
Accessibility	N/A	<i>Assessment Score</i>
Product type:		N/A
Extent of Damage:		N/A
Surface Treatment:		N/A
Asbestos type:		N/A
Material Assessment Score:		N/A
Priority Assessment Score:		N/A
Action:	N/A	
Comments:	Modern electrics in lounge cupboard	

Document Name	Author	Issued by	Revision Number	Issue Date	Page No
2019	Emma Humphreys	Armour AS	0	09/09/2019	27

**Item No: 9****Sample No: N/A****Location: Cadets Mess – WC's x 2**

Material Description:	Textured Coating to Ceilings	
Identification:	As Per Sample – DK/3 – No Asbestos Detected	
Approx. quantity:	4M2	
Accessibility	N/A	<i>Assessment Score</i>
Product type:		N/A
Extent of Damage:		N/A
Surface Treatment:		N/A
Asbestos type:		N/A
Material Assessment Score:		N/A
Priority Assessment Score:		N/A
Action:	N/A	
Comments:	N/A	

Document Name	Author	Issued by	Revision Number	Issue Date	Page No
2019	Emma Humphreys	Armour AS	0	09/09/2019	28



Item No: 10

Sample No: N/A

Location: Cadets Mess – Kitchen



Material Description:	Textured Coating to Ceilings	
Identification:	As Per Sample – DK/3 – No Asbestos Detected	
Approx. quantity:	4M2	
Accessibility	N/A	<i>Assessment Score</i>
Product type:		N/A
Extent of Damage:		N/A
Surface Treatment:		N/A
Asbestos type:		N/A
Material Assessment Score:		N/A
Priority Assessment Score:		N/A
Action:	N/A	
Comments:	Modern Sink Pad	

Document Name	Author	Issued by	Revision Number	Issue Date	Page No
2019	Emma Humphreys	Armour AS	0	09/09/2019	29



Item No: 11

Sample No: 4

Location: Cadets Mess – Mess Room



Material Description:	Textured Coating to Ceiling	
Identification:	Sampled – No Asbestos Detected	
Approx. quantity:	70M2	
Accessibility	N/A	<i>Assessment Score</i>
Product type:		N/A
Extent of Damage:		N/A
Surface Treatment:		N/A
Asbestos type:		N/A
Material Assessment Score:		N/A
Priority Assessment Score:		N/A
Action:	N/A	
Comments:	N/A	

Document Name	Author	Issued by	Revision Number	Issue Date	Page No
2019	Emma Humphreys	Armour AS	0	09/09/2019	30



Item No: 14

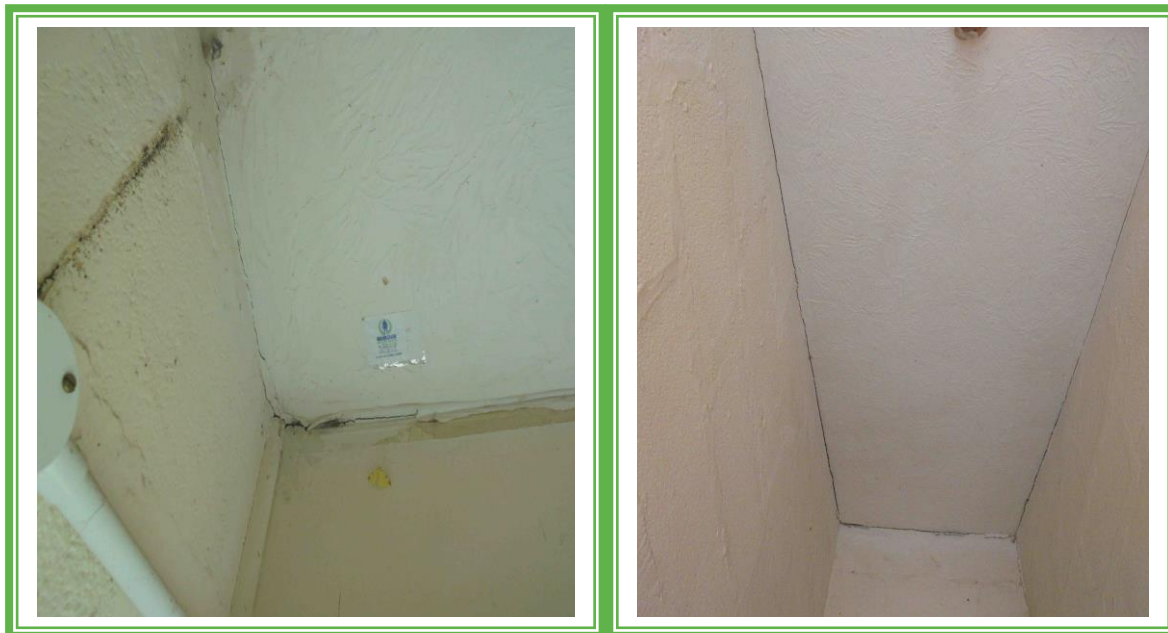
Sample No: N/A

Location: Link Trainer Facility – Rooms 1 and 2



Material Description:	Visual Inspection – No Suspect Materials Found	
Identification:	N/A	
Approx. quantity:	N/A	
Accessibility	N/A	<i>Assessment Score</i>
Product type:		N/A
Extent of Damage:		N/A
Surface Treatment:		N/A
Asbestos type:		N/A
Material Assessment Score:		N/A
Priority Assessment Score:		N/A
Action:	N/A	
Comments:	Non-Asbestos felt to underside or roof	

Document Name	Author	Issued by	Revision Number	Issue Date	Page No
2019	Emma Humphreys	Armour AS	0	09/09/2019	31

**Item No: 24****Sample No: 10****Location: Admin Building – Corridor**

Material Description:	Textured Coating to Ceiling	
Identification:	Sampled – No Asbestos Detected	
Approx. quantity:	4M2	
Accessibility	N/A	<i>Assessment Score</i>
Product type:		N/A
Extent of Damage:		N/A
Surface Treatment:		N/A
Asbestos type:		N/A
Material Assessment Score:		N/A
Priority Assessment Score:		N/A
Action:	N/A	
Comments:	N/A	

Document Name	Author	Issued by	Revision Number	Issue Date	Page No
2019	Emma Humphreys	Armour AS	0	09/09/2019	32



Item No: 26

Sample No: N/A

Location: External - Portbury Building



Material Description:	Visual Inspection – No Suspect Materials Found	
Identification:	N/A	
Approx. quantity:	N/A	
Accessibility	N/A	<i>Assessment Score</i>
Product type:		N/A
Extent of Damage:		N/A
Surface Treatment:		N/A
Asbestos type:		N/A
Material Assessment Score:		N/A
Priority Assessment Score:		N/A
Action:	N/A	
Comments:	N/A	

Document Name	Author	Issued by	Revision Number	Issue Date	Page No
2019	Emma Humphreys	Armour AS	0	09/09/2019	33

**Item No: 27****Sample No: N/A****Location: Portbury Building – Kitchen and Lounge**

Material Description:	Visual Inspection – No Suspect Materials Found	
Identification:	N/A	
Approx. quantity:	N/A	
Accessibility	N/A	<i>Assessment Score</i>
Product type:		N/A
Extent of Damage:		N/A
Surface Treatment:		N/A
Asbestos type:		N/A
Material Assessment Score:		N/A
Priority Assessment Score:		N/A
Action:	N/A	
Comments:	Modern Sink Pads	

Document Name	Author	Issued by	Revision Number	Issue Date	Page No
2019	Emma Humphreys	Armour AS	0	09/09/2019	34

**Item No: 28****Sample No: N/A****Location: Portbury Building – Conference Room**

Material Description:	Visual Inspection – No Suspect Materials Found	
Identification:	N/A	
Approx. quantity:	N/A	
Accessibility	N/A	<i>Assessment Score</i>
Product type:		N/A
Extent of Damage:		N/A
Surface Treatment:		N/A
Asbestos type:		N/A
Material Assessment Score:		N/A
Priority Assessment Score:		N/A
Action:	N/A	
Comments:	N/A	

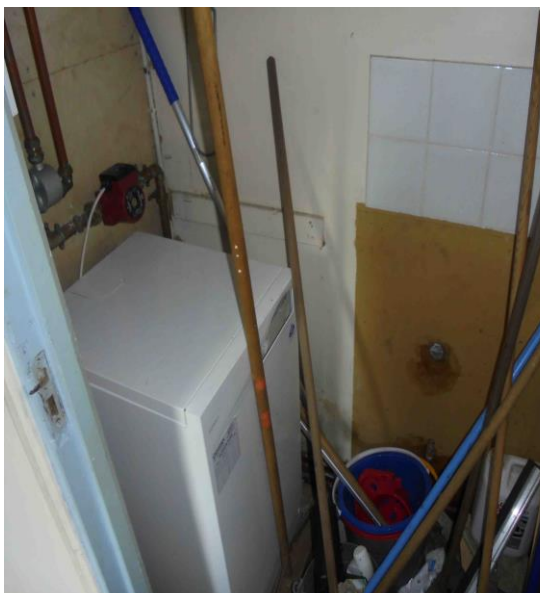
Document Name	Author	Issued by	Revision Number	Issue Date	Page No
2019	Emma Humphreys	Armour AS	0	09/09/2019	35



Item No: 29

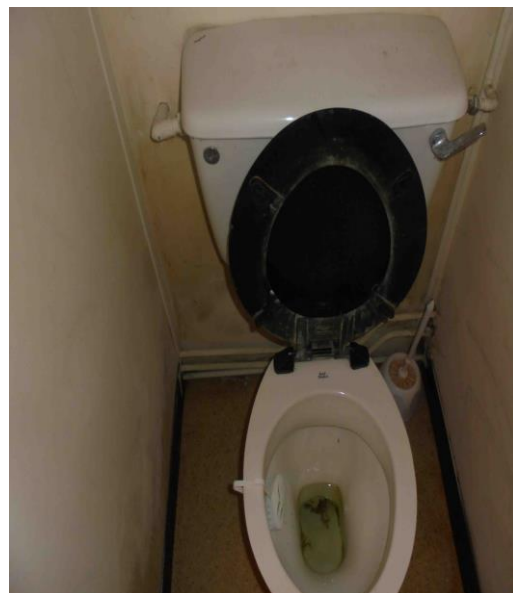
Sample No: N/A

Location: Portbury Building – Lobby and Cupboard



Material Description:	Visual Inspection – No Suspect Materials Found	
Identification:	N/A	
Approx. quantity:	N/A	
Accessibility	N/A	<i>Assessment Score</i>
Product type:		N/A
Extent of Damage:		N/A
Surface Treatment:		N/A
Asbestos type:		N/A
Material Assessment Score:		N/A
Priority Assessment Score:		N/A
Action:	N/A	
Comments:	Modern Ideal Boiler in Cupboard	

Document Name	Author	Issued by	Revision Number	Issue Date	Page No
2019	Emma Humphreys	Armour AS	0	09/09/2019	36

**Item No: 30****Sample No: 11****Location: Portbury Building – WC's x 3**

Material Description:	Toilet Seats	
Identification:	Sampled – No Asbestos Detected	
Approx. quantity:	X 3 Seats	
Accessibility	N/A	<i>Assessment Score</i>
Product type:		N/A
Extent of Damage:		N/A
Surface Treatment:		N/A
Asbestos type:		N/A
Material Assessment Score:		N/A
Priority Assessment Score:		N/A
Action:	N/A	
Comments:	N/A	

Document Name	Author	Issued by	Revision Number	Issue Date	Page No
2019	Emma Humphreys	Armour AS	0	09/09/2019	37



Item No: 31

Sample No: N/A

Location: External - Main Classroom Block



Material Description:	Visual Inspection – No Suspect Materials Found	
Identification:	N/A	
Approx. quantity:	N/A	
Accessibility	N/A	<i>Assessment Score</i>
Product type:		N/A
Extent of Damage:		N/A
Surface Treatment:		N/A
Asbestos type:		N/A
Material Assessment Score:		N/A
Priority Assessment Score:		N/A
Action:	N/A	
Comments:	N/A	

Document Name	Author	Issued by	Revision Number	Issue Date	Page No
2019	Emma Humphreys	Armour AS	0	09/09/2019	38



Item No: 32

Sample No: N/A

Location: Main Classroom Block – Hawk and Typhoon rooms



Material Description:	Visual Inspection – No Suspect Materials Found	
Identification:	N/A	
Approx. quantity:	N/A	
Accessibility	N/A	<i>Assessment Score</i>
Product type:		N/A
Extent of Damage:		N/A
Surface Treatment:		N/A
Asbestos type:		N/A
Material Assessment Score:		N/A
Priority Assessment Score:		N/A
Action:	N/A	
Comments:	N/A	

Document Name	Author	Issued by	Revision Number	Issue Date	Page No
2019	Emma Humphreys	Armour AS	0	09/09/2019	39



Item No: 33

Sample No: N/A

Location: Main Classroom Block – Harrier and Training Rooms



Material Description:	Visual Inspection – No Suspect Materials Found	
Identification:	N/A	
Approx. quantity:	N/A	
Accessibility	N/A	<i>Assessment Score</i>
Product type:		N/A
Extent of Damage:		N/A
Surface Treatment:		N/A
Asbestos type:		N/A
Material Assessment Score:		N/A
Priority Assessment Score:		N/A
Action:	N/A	
Comments:	N/A	

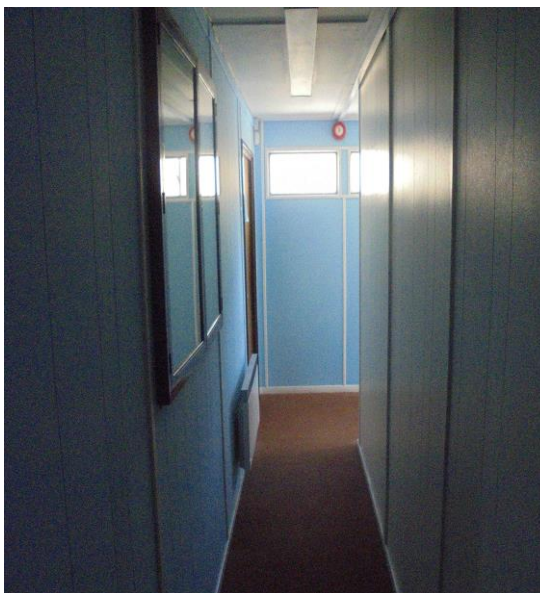
Document Name	Author	Issued by	Revision Number	Issue Date	Page No
2019	Emma Humphreys	Armour AS	0	09/09/2019	40



Item No: 34

Sample No: N/A

Location: Main Classroom Block - Corridor



Material Description:	Visual Inspection – No Suspect Materials Found	
Identification:	N/A	
Approx. quantity:	N/A	
Accessibility	N/A	<i>Assessment Score</i>
Product type:		N/A
Extent of Damage:		N/A
Surface Treatment:		N/A
Asbestos type:		N/A
Material Assessment Score:		N/A
Priority Assessment Score:		N/A
Action:	N/A	
Comments:	Modern Electrical Box	

Document Name	Author	Issued by	Revision Number	Issue Date	Page No
2019	Emma Humphreys	Armour AS	0	09/09/2019	41



Item No: 35

Sample No: N/A

Location: External - Beluga Parade Hall



Material Description:	Visual Inspection – No Suspect Materials Found	
Identification:	N/A	
Approx. quantity:	N/A	
Accessibility	N/A	<i>Assessment Score</i>
Product type:		N/A
Extent of Damage:		N/A
Surface Treatment:		N/A
Asbestos type:		N/A
Material Assessment Score:		N/A
Priority Assessment Score:		N/A
Action:	N/A	
Comments:	N/A	

Document Name	Author	Issued by	Revision Number	Issue Date	Page No
2019	Emma Humphreys	Armour AS	0	09/09/2019	42



Item No: 36

Sample No: 12

Location: Beluga Parade Hall - Hall



Material Description:	Panels Behind Heaters	
Identification:	Sampled – No Asbestos Detected	
Approx. quantity:	2-3M2	
Accessibility	N/A	<i>Assessment Score</i>
Product type:		N/A
Extent of Damage:		N/A
Surface Treatment:		N/A
Asbestos type:		N/A
Material Assessment Score:		N/A
Priority Assessment Score:		N/A
Action:	N/A	
Comments:	N/A	

Document Name	Author	Issued by	Revision Number	Issue Date	Page No
2019	Emma Humphreys	Armour AS	0	09/09/2019	43



Item No: 38

Sample No: N/A

Location: Firing Range 1 and 2



Material Description:	Visual Inspection – No Suspect Materials Found	
Identification:	N/A	
Approx. quantity:	N/A	
Accessibility	N/A	<i>Assessment Score</i>
Product type:		N/A
Extent of Damage:		N/A
Surface Treatment:		N/A
Asbestos type:		N/A
Material Assessment Score:		N/A
Priority Assessment Score:		N/A
Action:	N/A	
Comments:	N/A	

Document Name	Author	Issued by	Revision Number	Issue Date	Page No
2019	Emma Humphreys	Armour AS	0	09/09/2019	44

**Item No: 39****Sample No: N/A****Location: Garage**

Material Description:	Visual Inspection – No Suspect Materials Found	
Identification:	N/A	
Approx. quantity:	N/A	
Accessibility	N/A	<i>Assessment Score</i>
Product type:		N/A
Extent of Damage:		N/A
Surface Treatment:		N/A
Asbestos type:		N/A
Material Assessment Score:		N/A
Priority Assessment Score:		N/A
Action:	N/A	
Comments:	N/A	

Document Name	Author	Issued by	Revision Number	Issue Date	Page No
2019	Emma Humphreys	Armour AS	0	09/09/2019	45



Item No: 40

Sample No: N/A

Location: Shed



Material Description:	Visual Inspection – No Suspect Materials Found	
Identification:	N/A	
Approx. quantity:	N/A	
Accessibility	N/A	<i>Assessment Score</i>
Product type:		N/A
Extent of Damage:		N/A
Surface Treatment:		N/A
Asbestos type:		N/A
Material Assessment Score:		N/A
Priority Assessment Score:		N/A
Action:	N/A	
Comments:	N/A	

Document Name	Author	Issued by	Revision Number	Issue Date	Page No
2019	Emma Humphreys	Armour AS	0	09/09/2019	46

Section 6: Survey Objectives

Instructions were received from Sue Morrell of Wessex RFCA to carry out a Management asbestos survey at 2152 North Bristol Squadron, Filton, Bristol, BS7 0SL in accordance with HSG264 and Armour Analytical's quality procedures.

The survey was carried out on 16th July 2019 by David Kelly with the objective of facilitating a Management report.

This Management survey is characterised as a 'Visual Inspection Sampling and Identification Survey' in HSG264. This type of survey is used to locate and describe, so far as is reasonably practicable, all asbestos containing materials (ACMs) in the building and will by its nature involve the partial destruction of the building's fabric as access is gained to all areas. A full sampling programme is undertaken to identify possible ACMs and estimate the extent of ACMs reported.

The objective of this survey report is to identify, so far as is reasonably practicable, the location, extent, product type and composition of ACMS within the building to enable the building occupants to put management and remedial procedures in place.

Document Name	Author	Issued by	Revision Number	Issue Date	Page No
2019	Emma Humphreys	Armour AS	0	09/09/2019	47

Section 7: Survey Techniques

Each floor, room and area within the scope was systematically inspected for suspect materials thought or known to contain asbestos and where such materials were encountered their location, extent, and composition were recorded.

Where materials of a similar nature exist, to those previously sampled, and a reasoned argument can be made that their composition is likely to be identical further physical sampling was not undertaken.

Photographs were taken of all sample locations, unless otherwise stated.

The analysis of suspect ACMs was undertaken by a UKAS accredited laboratory using the analytical method detailed in *HSG248, Appendix 2 -Asbestos: The analysts' guide for sampling, analysis and clearance procedures*.

Document Name	Author	Issued by	Revision Number	Issue Date	Page No
2019	Emma Humphreys	Armour AS	0	09/09/2019	48

Section 8: Survey Caveat

This report is based upon a management report inspection of an unfamiliar site. During the course of the survey all reasonable efforts were made to identify the physical presence of materials containing asbestos within the building.

A Management Survey is a non-intrusive survey, meaning that access within the fabric of the building is limited. The survey does not include access to the following areas (unless agreed beforehand with the Client and provisions are put in place):

- Within wall or ceiling construction;
- Under fixed flooring;
- Within non-openable boxings;
- Within live electrics, boilers or machinery;
- Where access/visibility is limited in an area due to stored items, furniture or services;
- Areas where there is no safe access to inspect such as floor ducts, lift shafts and loft spaces with no crawlboards;
- High level areas that are too high to safely inspect.
- Within pipework insulation throughout building as this would affect the integrity of services.

Any intrusive works carried out within the building must first be subject to a Refurbishment Asbestos Survey.

This report will be restricted to the areas that fall within the scope of works for project and will not take into account any area's that do not fall within the scope. Any asbestos that is identified within this report will need to be added to the buildings existing information and should not form the basis for a management survey. This survey will not include priority assessments nor will it include a register.

This survey considered the construction of the building, associated fixtures & fittings and associated structures and in no way should it be considered as a ground investigation report.

Services should be disconnected prior to commencement of a Management survey; however, where plant and/or electrical installations are live or appear to be live then these will not be accessed.

This survey report is not a bill of quantities.

Document Name	Author	Issued by	Revision Number	Issue Date	Page No
2019	Emma Humphreys	Armour AS	0	09/09/2019	49

Section 9: Survey Notes

This report has been written with reference to the various Guidance Notes etc, issued, and current at the date of this report and describes circumstances at the site on the date the investigation took place.

Where similar items exist in the building, only one or two samples have been taken to ascertain the material content. It was assumed that similar products were of the same material.

Any person undertaking work within the buildings should be told of the presence of asbestos. This briefing also applies to any other person associated with the site, including staff, sub-contractors and others.

The drawings in the report are not to scale and are illustrative only to indicate approximate locations. The descriptions used are for location identification purposes.

All the recommendations described in this report are based upon assumptions made after consideration of the type of material, condition of the material, its location, analysis result and type of use the area is thought to be subjected to. However, statutory authorities or others could require amendments based on local knowledge, change in legislation, change in use or indeed other conditions or criteria.

Samples taken from floor tiles (or similar material) may include a bitumen adhesive as part of the sample. It is known that some proprietary brands of bitumen have an asbestos content and this will be included as an integral part of the bulk sample unless otherwise stated.

Document Name	Author	Issued by	Revision Number	Issue Date	Page No
2019	Emma Humphreys	Armour AS	0	09/09/2019	50

Section 10: Material Assessment Algorithm

Variable	Score	Examples
Installation / Product type	1	Vinyl, 'Bakelite', Cement
	2	Asbestos insulating board, paper, rope
	3	Pipe insulation, spray coating, friable debris
Condition / damage	0	Good
	1	Slight / minor damage
	2	Moderate damage – breakage to surface treatment
	3	Major damage – smashed or exposed material
Surface treatment	0	Non-friable e.g. vinyl
	1	Enclosed insulation, encapsulated AIB
	2	Unsealed AIB, encapsulated insulation
	3	Unsealed insulation or spray coating
Asbestos type	1	Chrysotile
	2	Amosite & other amphiboles
	3	Crocidolite

The scores from each of the four sections are added together to produce a risk score:

Risk score	Risk assessment
10 or more	High risk
7 – 9	Medium risk
5 – 6	Low risk
4 & below	Negligible risk

Document Name	Author	Issued by	Revision Number	Issue Date	Page No
2019	Emma Humphreys	Armour AS	0	09/09/2019	51



Section 11: Certificates of Bulk Analysis



Our Ref: J171768 FI: 12
Your Ref: 2481
Date: 24/07/2019

ENVIROCHEM
Analytical Laboratories Ltd.
12 The Gardens
Broadcut, Fareham
Hampshire
PO16 8SS



Tel: (01329) 287777
Fax: (01329) 287755
www.envirochem.co.uk
office@envirochem.co.uk

Asbestos Fibre Identification Report

Client: Armour Analytical Services Ltd
Admirals Yard, Station Road, Patchway, Bristol, BS34 6LR
Site Address: 2152 North Bristol Squadron, Bristol, BS7 0SL
Sampled By: Armour Analytical Services Ltd
Date sampled/received: 23rd July 2019
Date analysed: 24th July 2019
Analyst/s: Ewelina Kowalczyk Pariyar
Analysis Location: 12 The Gardens, Broadcut, Fareham, Hampshire, PO16 8SS

ANALYTICAL PROCEDURE

Fibre identification was carried out in accordance with the documented 'in-house' methods based on the HSE Guidance Note HSG 248. These employed stereo microscopy, polarized microscopy and dispersion staining techniques.

RESULTS

Sample No.	Sample Ref.	Location	Asbestos Detected	Asbestos Type
1	BS565056	Concorde Building - Office panel behind heater	No	
2	BS565057	Concorde Building - Classrooms - Panels behind and below heater	No	
3	BS565058	Cadet Mess - Lounge&Lobby - textured coating to ceiling	No	
4	BS565059	Cadets mess - mess room - textured coating to ceiling	No	

NOTES:

1. Sample(s) were examined for the presence of 6 types of asbestos fibres: crocidolite (blue), amosite (brown), chrysotile (white), anthophyllite, actinolite and tremolite.
2. Samples collected by the client are evaluated using information provided by the client. For samples collected by the client the date of receipt is deemed to be the same as the date sampled.
3. Envirochem is a UKAS accredited laboratory for sampling and identification of asbestos containing materials.
4. Comments, observations and opinions are outside the scope of UKAS accreditation.
5. The analytical method in the HSG248 does not quantify the amount of asbestos present, therefore UKAS accreditation does not permit quantification.
6. If, during fibre identification, only 1 or 2 fibres are seen and identified as asbestos, then the term 'trace asbestos identified' is used.

SIGNATURE:

Kowalczyk

Authorised signatory

PRINT NAME: Ewelina Kowalczyk Pariyar

Reg. No. 2378228 England. Registered Office: Envirochem, 12 The Gardens, Broadcut, Fareham, Hampshire, PO16 8SS.

Page 1 of 3

Document Name	Author	Issued by	Revision Number	Issue Date	Page No
2019	Emma Humphreys	Armour AS	0	09/09/2019	52



ARMOUR
ANALYTICAL SERVICES



Our Ref: J171768 FI: 12
Your Ref: 2481
Date: 24/07/2019

ENVIROCHEM

Analytical Laboratories Ltd.

12 The Gardens
Broadcut, Fareham
Hampshire
PO16 8SS



Tel: (01329) 287777
Fax: (01329) 287755
www.envirochem.co.uk
office@envirochem.co.uk

Asbestos Fibre Identification Report

Client: Armour Analytical Services Ltd
Admirals Yard, Station Road, Patchway, Bristol, BS34 6LR
Site Address: 2152 North Bristol Squadron, Bristol, BS7 0SL
Sampled By: Armour Analytical Services Ltd
Date sampled/received: 23rd July 2019
Date analysed: 24th July 2019
Analyst/s: Ewelina Kowalczyk Pariyar
Analysis Location: 12 The Gardens, Broadcut, Fareham, Hampshire, PO16 8SS

ANALYTICAL PROCEDURE

Fibre identification was carried out in accordance with the documented 'in-house' methods based on the HSE Guidance Note HSG 248. These employed stereo microscopy, polarized microscopy and dispersion staining techniques.

RESULTS

Sample No.	Sample Ref.	Location	Asbestos Detected	Asbestos Type
5	BS565060	Link trainer facility - External cement under cloaking	Yes	Chrysotile
6	BS565061	Admin building - external profiled cement roof	Yes	Chrysotile Crocidolite
7	BS565062	Admin building - external cement downpipes	Yes	Chrysotile
8	BS565063	Admin building - external cement roof edging	Yes	Chrysotile

NOTES:

1. Sample(s) were examined for the presence of 6 types of asbestos fibres: crocidolite (blue), amosite (brown), chrysotile (white), anthophyllite, actinolite and tremolite.
2. Samples collected by the client are evaluated using information provided by the client. For samples collected by the client the date of receipt is deemed to be the same as the date sampled.
3. Envirochem is a UKAS accredited laboratory for sampling and identification of asbestos containing materials.
4. Comments, observations and opinions are outside the scope of UKAS accreditation.
5. The analytical method in the HSG248 does not quantify the amount of asbestos present, therefore UKAS accreditation does not permit quantification.
6. If, during fibre identification, only 1 or 2 fibres are seen and identified as asbestos, then the term 'trace asbestos identified' is used.

SIGNATURE:

Kowalczyk

Authorised signatory

PRINT NAME: Ewelina Kowalczyk Pariyar

Reg. No. 2378228 England. Registered Office: Envirochem, 12 The Gardens, Broadcut, Fareham, Hampshire, PO16 8SS.

Page 2 of 3

Document Name	Author	Issued by	Revision Number	Issue Date	Page No
2019	Emma Humphreys	Armour AS	0	09/09/2019	53



ARMOUR
ANALYTICAL SERVICES



Our Ref: J171768 FI: 12
Your Ref: 2481
Date: 24/07/2019

ENVIROCHEM

Analytical Laboratories Ltd.

12 The Gardens
Broadcut, Fareham
Hampshire
PO16 8SS



Tel: (01329) 287777
Fax: (01329) 287755
www.envirochem.co.uk
office@envirochem.co.uk

Asbestos Fibre Identification Report

Client: Armour Analytical Services Ltd
Admirals Yard, Station Road, Patchway, Bristol, BS34 6LR

Site Address: 2152 North Bristol Squadron, Bristol, BS7 0SL

Sampled By: Armour Analytical Services Ltd

Date sampled/received: 23rd July 2019

Date analysed: 24th July 2019

Analyst/s: Ewelina Kowalczyk Pariyar

Analysis Location: 12 The Gardens, Broadcut, Fareham, Hampshire, PO16 8SS

ANALYTICAL PROCEDURE

Fibre identification was carried out in accordance with the documented 'in-house' methods based on the HSE Guidance Note HSG 248. These employed stereo microscopy, polarized microscopy and dispersion staining techniques.

RESULTS

Sample No.	Sample Ref.	Location	Asbestos Detected	Asbestos Type
9	BS565064	Admin block - comms room and mess room - floor tiles and adhesive	Yes	Chrysotile
10	BS565065	Admin block - corridor - textured coating to ceiling	No	
11	BS565066	WC's x 3. Toilet seats	No	
12	BS565067	Beluga Parade Hall - Hall Panels behind heaters	No	

NOTES:

1. Sample(s) were examined for the presence of 6 types of asbestos fibres: crocidolite (blue), amosite (brown), chrysotile (white), anthophyllite, actinolite and tremolite.
2. Samples collected by the client are evaluated using information provided by the client. For samples collected by the client the date of receipt is deemed to be the same as the date sampled.
3. Envirochem is a UKAS accredited laboratory for sampling and identification of asbestos containing materials.
4. Comments, observations and opinions are outside the scope of UKAS accreditation.
5. The analytical method in the HSG248 does not quantify the amount of asbestos present, therefore UKAS accreditation does not permit quantification.
6. If, during fibre identification, only 1 or 2 fibres are seen and identified as asbestos, then the term 'trace asbestos identified' is used.

SIGNATURE:

Kowalczyk

Authorised signatory

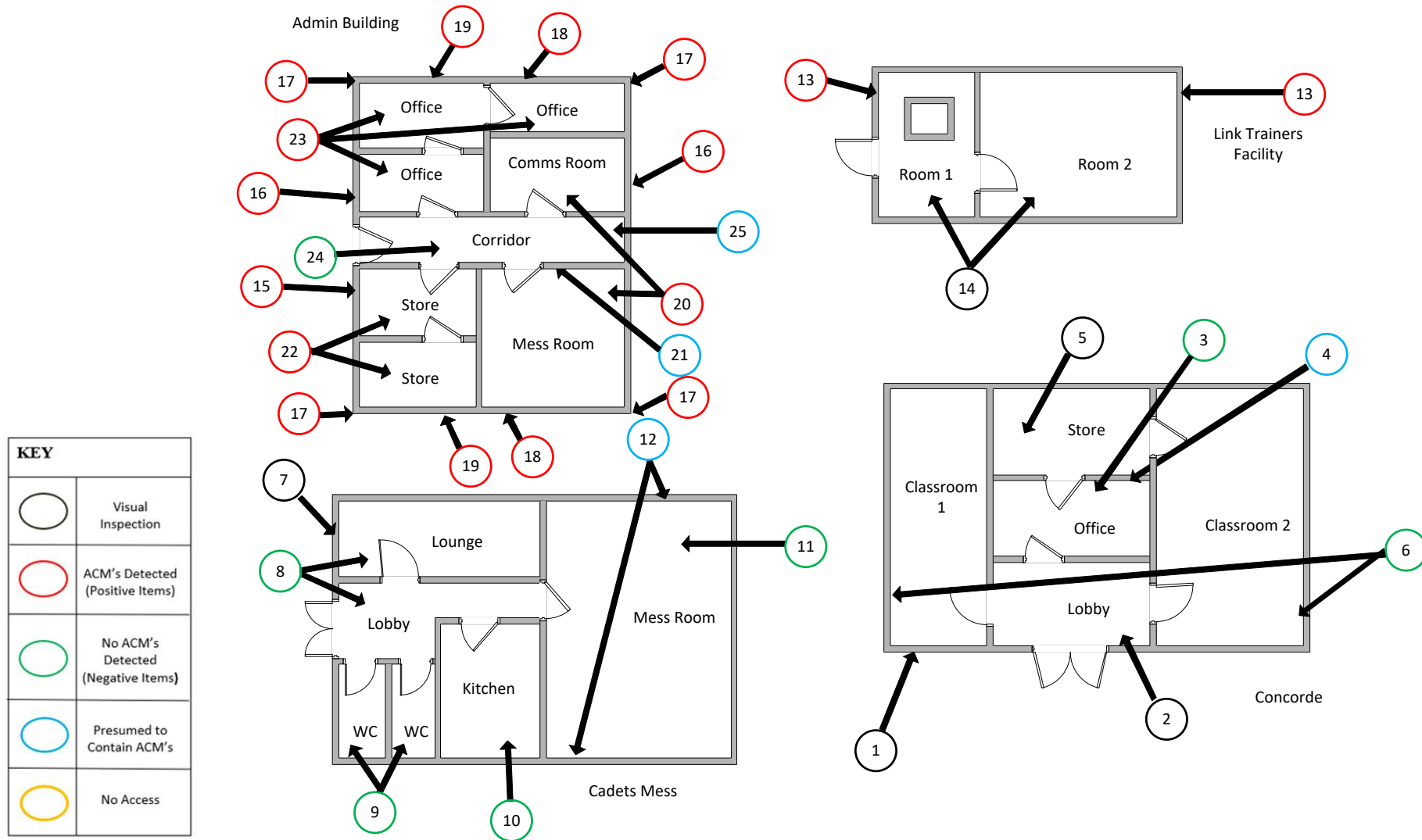
PRINT NAME: Ewelina Kowalczyk Pariyar

Reg. No. 2378228 England. Registered Office: Envirochem, 12 The Gardens, Broadcut, Fareham, Hampshire, PO16 8SS.

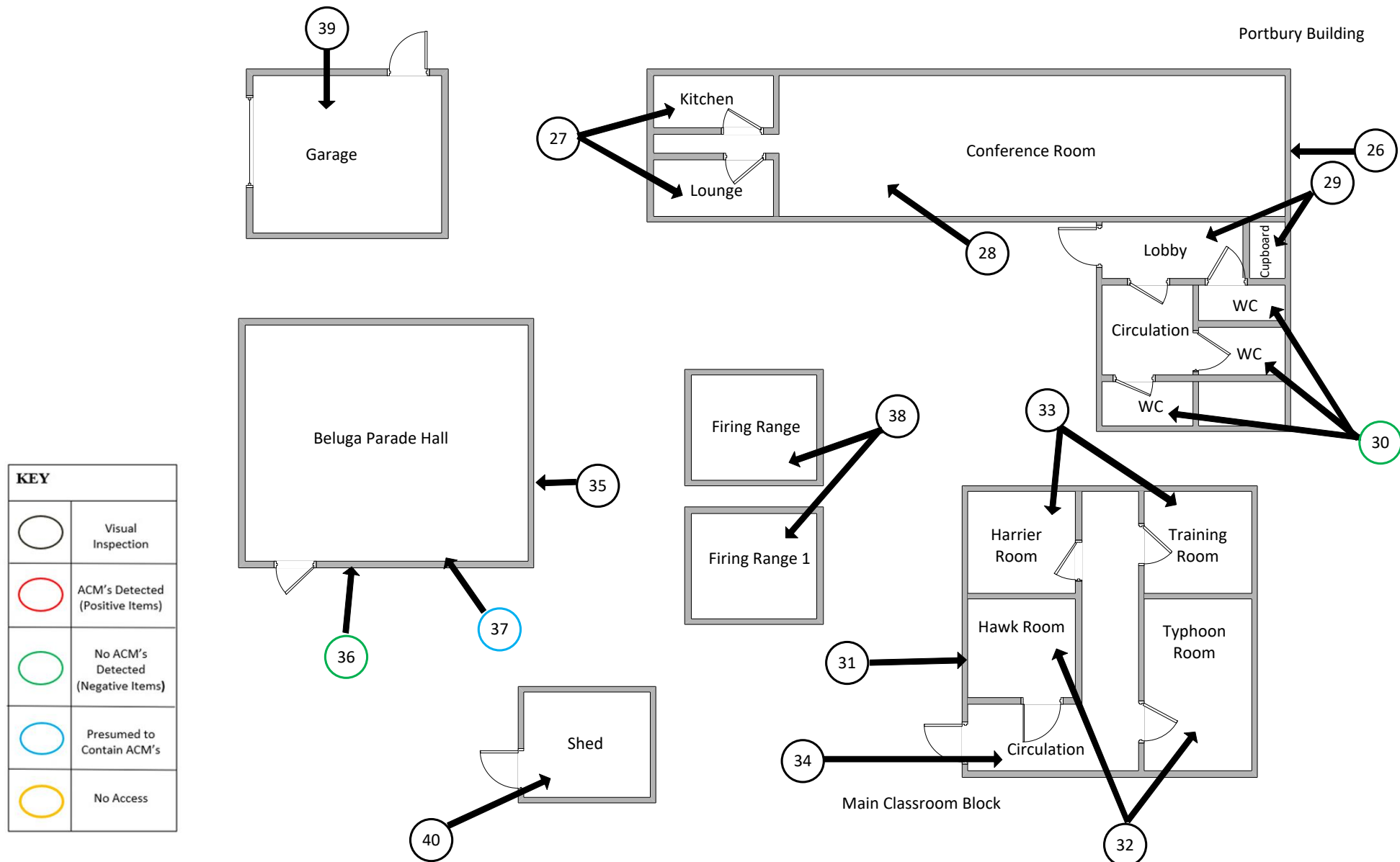
Page 3 of 3

Document Name	Author	Issued by	Revision Number	Issue Date	Page No
2019	Emma Humphreys	Armour AS	0	09/09/2019	54

Section 12: Site Plan



Document Name	Author	Issued by	Revision Number	Issue Date	Page No
2019	Emma Humphreys	Armour AS	0	09/09/2019	55



Document Name	Author	Issued by	Revision Number	Issue Date	Page No
2019	Emma Humphreys	Armour AS	0	09/09/2019	56

I the surveyor can confirm that this report is accurate to my findings onsite and this survey has been Content checked by myself.

Checked by: David Kelly

Date: 06/09/2019

I the Admin Manager can confirm that this report is accurate to the paperwork received and this survey has been quality checked by myself.

Checked by: Emma Humphreys

Date: 06.09.2019

Report Compiled By

Armour Analytical Services Ltd, Admirals Yard, Station Road, Bristol, BS34 6LR

Document Name	Author	Issued by	Revision Number	Issue Date	Page No
2019	Emma Humphreys	Armour AS	0	09/09/2019	57