

Project Number A-00518 (3700)

**Re-Inspection
Asbestos Survey Report**

**6th Battalion
Gloucestershire
GL4 3BD**



Working in Partnership with Shield Services Group



Document Name	Author	Issued by	Revision Number	Issue Date	Page No
2021	David Kelly	Armour AS	0	22/02/2021	1

Contents

Section	
1	Contact Details
2	Executive Summary
3	Site Description and Survey Information
4	Positive, Presumed or No Access Items
5	Negative Photos Sheets
6	Survey Objectives
7	Survey Notes
8	Material Assessment Algorithm
9	Certificates of Bulk Analysis
10	Site Plan

Document Name	Author	Issued by	Revision Number	Issue Date	Page No
2021	David Kelly	Armour AS	0	22/02/2021	2



Section 1: Contact Details

Client Details:		Instructing Party:	
Wessex RFCA Mount House Mount Street Taunton TA1 3QE		Shield Caxton Business Park Warmley BS30 8XJ	
Contact Name:	Kelvin Walker	Contact Name:	Chloe Smith
Tel: 01823 250116	Fax: N/A	Tel: 01173012650	Fax: N/A

Site Address:		Report Author:	
6th Battalion Gloucestershire GL4 3BD		Armour Analytical Services Admirals Yard Station Road Bristol BS34 6LR	
Contact Name:	Kelvin Walker	Contact Name:	Emma Humphreys
Tel: 01823 250116	Fax: N/A	Mobile: 07468535836	

Lead Surveyor's Name:	Lead Surveyor's Authorising Signature:
David Kelly	

Document Name	Author	Issued by	Revision Number	Issue Date	Page No
2021	David Kelly	Armour AS	0	22/02/2021	3



Section 2: Executive Summary

No samples were taken during this survey.

The following items have been either been "Strongly Presumed" To Contain Asbestos or "Presumed" to Contain Asbestos as they were either visually identified in being so, labelled after previously being sampled on prior surveys or not accessible at the time of the survey:

Status	Sample Type	Location
Presumed	Wrap to Mains Cable - Bituminous Product	Ground Floor House 4 - Lobby and Cupboard 001
Presumed	Wrap to Mains Cable - Bituminous Product	Ground Floor House 3 - Lobby and Cupboard 002
Strongly Presumed	Asbestos Air Contamination - Insulation	Ground Floor Houses 1 and 2 003
Presumed	Wrap to Mains Cable - Bituminous Product	Ground Floor House 5 - Kitchen and Cupboards 005
Previously Sampled	Cement Panel Packer - Cement Product	Ground Floor Garage - Drill Hall 009
Previously Sampled	Fibreboard Wall Panels - Paper Product	Ground Floor Garage - Office - Off Drill Hall Garage 010
Previously Sampled	Fibreboard Wall Panels - Paper Product	Ground Floor Garage - Bar/Mess 011
Previously Sampled	Sink Pad - Bituminous Product	Ground Floor Garage - Bar/Mess 012
Previously Sampled	Cement Panel Packer - Cement Product	Ground Floor Service Garage 013
Previously Sampled	Fibreboard Wall Panels - Paper Product	Ground Floor Garage - Stores x 2 014
Previously Sampled	Cream and Grey Floor Tiles - Vinyl Products	Ground Floor Main Building - Stores - Lobby and Cupboard 016
Previously Sampled	Sink Pad - Bituminous Product	Ground Floor Main Building - Stores - Kitchen 018
Previously Sampled	Adhesive under Parquet Flooring - Bituminous Product	Ground Floor Main Building - Drill Hall 019

Document Name	Author	Issued by	Revision Number	Issue Date	Page No
2021	David Kelly	Armour AS	0	22/02/2021	4

Status	Sample Type	Location
Previously Sampled	Floor Tiles and Adhesive - Vinyl Products	Ground Floor Main Building - IT Suite and Server Room 029
Previously Sampled	Floor Tiles and Adhesive and Debris - Vinyl Products	Ground Floor Main Building - Cupboard 030
Previously Sampled	Wall and Door Panels - Insulating Board	Ground Floor Main Building - Lobby (Side Entrance) 031
Previously Sampled	Door Header Panel - Insulating Board	Ground Floor Main Building - Lobby (Side Entrance) 032
Previously Sampled	Floor Tiles and Adhesive and Debris - Vinyl Products	Ground Floor Main Building - Offices G1 and G2 034
Previously Sampled	Door Header Panel - Insulating Board	Ground Floor Main Building - Corridor 035
Presumed	Toilet Seat - PVC / Reinforced Plastics	Ground Floor Main Building - Mens WC 036
Strongly Presumed	Electrical Panels - Gaskets (rope/woven)	Ground Floor Main Building - Switch room 037
Presumed	Gaskets - Gaskets (compressed)	Ground Floor Main Building - Boiler Room 038
Previously Sampled	Floor Tiles and Adhesive and Debris - Vinyl Products	Ground Floor Main Building - Office 042
Presumed	Profiled Cement Roof - Cement Product	Ground Floor External Armoury 043
Previously Sampled	Promenade Floor Tiles - Cement Product	First Floor Main Building - Stores - Mezzanine 015
Previously Sampled	Promenade Tiles - Cement Product	First Floor Main Building - Stores - Store G1098 and Mezzanine 017
Previously Sampled	Floor Tiles and Adhesive - Vinyl Products	First Floor Main Building - Kitchen 020
Previously Sampled	Floor Tiles and Adhesive - Vinyl Products	First Floor Main Building - Admin Office F4 and Office 022
Previously Sampled	Floor Tiles and Adhesive - Vinyl Products	First Floor Main Building - F12 Cleaners Cupboard 023
Previously Sampled	Floor Tiles and Adhesive - Vinyl Products	First Floor Main Building - F17 Store 024
Previously Sampled	Floor Tiles and Adhesive - Vinyl Products	First Floor Main Building - PSI Office 025
Previously Sampled	Floor Tiles and Adhesive - Vinyl Products	First Floor Main Building - Office F6 and Cupboard 026
Previously Sampled	Floor Tiles and Adhesive - Vinyl Products	First Floor Main Building - Kitchen, Cupboard and WC 027
Previously Sampled	Floor Tiles and Adhesive - Vinyl Products	First Floor Main Building - Office F7 and Classroom F10 028
Previously Sampled	Floor Tiles and Adhesive and Debris - Vinyl Products	First Floor Main Building - PSAO Office and OC Office 033
Strongly Presumed	Under cloaking - Cement Product	External House 3 - Lobby and Cupboard 004

Document Name	Author	Issued by	Revision Number	Issue Date	Page No
2021	David Kelly	Armour AS	0	22/02/2021	5

Status	Sample Type	Location
Strongly Presumed	Under cloaking - Cement Product	External Houses 5 and 8 006
Strongly Presumed	Roof and Guttering - Cement Product	External Garages 1-5 008
Strongly Presumed	Rope Seals to Skylights - Gaskets (rope/woven)	External Main Building - Drill Hall Roof 021
Previously Sampled	Downpipes - Cement Product	External Main Building 039
Previously Sampled	Guttering - Cement Product	External Main Building 040
Strongly Presumed	Under cloaking - Cement Product	External Main Building 041

The presence of asbestos in these areas cannot be ascertained at this time. If any works are to be carried out in these areas in the future, then these works should be approached cautiously.

In accordance with current legislation, any suspect materials encountered in these areas are to be assumed to contain asbestos until proven otherwise. This will normally involve cessation of works in the affected area.

Document Name	Author	Issued by	Revision Number	Issue Date	Page No
2021	David Kelly	Armour AS	0	22/02/2021	6

Section 3: Site Description and Survey Information

Brief description on the general building construction

Brick and block construction with a pitched tiled roof.

Caveat for no access areas

No access within houses 1 and 2 due to identified asbestos air contamination.
No access within live electrics.

EXTERNAL MATERIALS

Roof Type	Pitched
Roof Materials	Cement Tiles, Profiled Cement, Profiled Metal
Soffits	Timber
Fascia	Timber
Walls	Brick, Wood and Metal
Verge Under cloaking	Cement
Guttering	Cement and Plastic
Downpipes	Cement and Plastic
Window/Door frames	UPVC
Other Materials	N/A

INTERNAL MATERIALS

Loft Insulation	Fiberglass
Roof Underlining	Non asbestos felt
Ceilings	Plasterboard
Walls <i>Internal</i>	Plasterboard, Brick, Asbestos Fiberboard, Asbestos Insulation Board
Floors	Lino, Tiles, Concrete, Carpet
Doors/Frames	Timber, Supalux, Asbestos Insulation Board
Pipework/Insulation	MMMF, Foam
Boxings	Timber, Plasterboard
Boiler Make	Modern
Flue Pipes	Metal
Storage Heaters	Modern
Electrical Boxes/Machinery	No Access
Ducting/Risers	Metal, Timber
Stairs	Concrete, Timber
Lift Shafts	N/A
Other Materials	N/A

Document Name	Author	Issued by	Revision Number	Issue Date	Page No
2021	David Kelly	Armour AS	0	22/02/2021	7

Section 4: Positive, Presumed or No Access Items

Item No:	1	Sample No:	N/A
Location:	Ground Floor - House 4 - Lobby and Cupboard 001		



Material Description:	Wrap to Mains Cable - Bituminous Product	
Identification:	Presumed to Contain Asbestos	
Approx. quantity:	1 LM	
Accessibility	Difficult	Assessment Score
Product type:	Bitumen	1
Extent of Damage:	Major damage	3
Surface Treatment:	Unsealed Insulation	3
Asbestos type:	Chrysotile	1
Material Assessment Score:		8
Priority Assessment Score:		Medium
Action:	Manage	
Comments:	Not possible to sample as live	

Document Name	Author	Issued by	Revision Number	Issue Date	Page No
2021	David Kelly	Armour AS	0	22/02/2021	8

Item No: 2

Sample No: N/A

Location: Ground Floor - House 3 - Lobby and Cupboard 002



Material Description:	Wrap to Mains Cable - Bituminous Product	
Identification:	Presumed to Contain Asbestos	
Approx. quantity:	1 LM	
Accessibility	Difficult	<i>Assessment Score</i>
Product type:	Bitumen	1
Extent of Damage:	Major damage	3
Surface Treatment:	Unsealed Insulation	3
Asbestos type:	Chrysotile	1
Material Assessment Score:		8
Priority Assessment Score:		Medium
Action:	Manage	
Comments:	Not possible to sample as live	

Document Name	Author	Issued by	Revision Number	Issue Date	Page No
2021	David Kelly	Armour AS	0	22/02/2021	9

Item No: 3

Sample No: N/A

Location: Ground Floor - Houses 1 and 2 003



Material Description:	Asbestos Air Contamination - Insulation	
Identification:	Strongly Presumed to Contain Asbestos	
Approx. quantity:	Unknown	
Accessibility	Difficult	Assessment Score
Product type:	Pipe Insulation	3
Extent of Damage:	Major damage	3
Surface Treatment:	Unsealed Pipe Lagging	3
Asbestos type:	Amosite, Chrysotile, Crocidolite	3
Material Assessment Score:		12
Priority Assessment Score:		High
Action:	Manage	
Comments:	No access within houses 1 and 2 due to identified asbestos air contamination following pipe lagging removal	

Document Name	Author	Issued by	Revision Number	Issue Date	Page No
2021	David Kelly	Armour AS	0	22/02/2021	10

Item No: 4

Sample No: N/A

Location: External - House 3 - Lobby and Cupboard 004



Material Description:	Under cloaking - Cement Product	
Identification:	Strongly Presumed to Contain Asbestos	
Approx. quantity:	8 LM	
Accessibility	Difficult	<i>Assessment Score</i>
Product type:	Cement	1
Extent of Damage:	Slight / minor damage	1
Surface Treatment:	Unsealed Cement	1
Asbestos type:	Chrysotile	1
Material Assessment Score:		4
Priority Assessment Score:		Negligible
Action:	Manage	
Comments:	Not possible to sample due to height	

Document Name	Author	Issued by	Revision Number	Issue Date	Page No
2021	David Kelly	Armour AS	0	22/02/2021	11

Item No: 5

Sample No: N/A

Location: Ground Floor - House 5 - Kitchen and Cupboards 005



Material Description:	Wrap to Mains Cable - Bituminous Product	
Identification:	Presumed to Contain Asbestos	
Approx. quantity:	1 LM	
Accessibility	Difficult	<i>Assessment Score</i>
Product type:	Bitumen	1
Extent of Damage:	Major damage	3
Surface Treatment:	Unsealed Insulation	3
Asbestos type:	Chrysotile	1
Material Assessment Score:		8
Priority Assessment Score:		Medium
Action:	Manage	
Comments:	Not possible to sample as live	

Document Name	Author	Issued by	Revision Number	Issue Date	Page No
2021	David Kelly	Armour AS	0	22/02/2021	12

Item No: 6

Sample No: N/A

Location: External - Houses 5 and 8 006



Material Description:	Under cloaking - Cement Product	
Identification:	Strongly Presumed to Contain Asbestos	
Approx. quantity:	16 LM	
Accessibility	Difficult	<i>Assessment Score</i>
Product type:	Cement	1
Extent of Damage:	Slight / minor damage	1
Surface Treatment:	Unsealed Cement	1
Asbestos type:	Chrysotile	1
Material Assessment Score:		4
Priority Assessment Score:		Negligible
Action:	Manage	
Comments:	Not possible to sample due to height	

Document Name	Author	Issued by	Revision Number	Issue Date	Page No
2021	David Kelly	Armour AS	0	22/02/2021	13

Item No: 8

Sample No: N/A

Location: External - Garages 1-5 008



Material Description:	Roof and Guttering - Cement Product	
Identification:	Strongly Presumed to Contain Asbestos	
Approx. quantity:	540 m ²	
Accessibility	Difficult	<i>Assessment Score</i>
Product type:	Cement	1
Extent of Damage:	Slight / minor damage	1
Surface Treatment:	Unsealed Cement	1
Asbestos type:	Chrysotile	1
Material Assessment Score:		4
Priority Assessment Score:		Negligible
Action:	Manage	
Comments:	Not possible to sample due to height	

Document Name	Author	Issued by	Revision Number	Issue Date	Page No
2021	David Kelly	Armour AS	0	22/02/2021	14

Item No: 9

Sample No: N/A

Location: Ground Floor - Garage - Drill Hall 009



Material Description:	Cement Panel Packer - Cement Product	
Identification:	Previously Sampled - Asbestos Detected	
Approx. quantity:	<1 m ²	
Accessibility	Medium	<i>Assessment Score</i>
Product type:	Cement	1
Extent of Damage:	Moderate damage	2
Surface Treatment:	Unsealed Cement	1
Asbestos type:	Chrysotile, Crocidolite	3
Material Assessment Score:		7
Priority Assessment Score:		Medium
Action:	Remove	
Comments:	Previously sampled ref: Armour 11/11/19 sample DK/3. Limited access throughout garages due to stored items and cages - other packers may be present	

Document Name	Author	Issued by	Revision Number	Issue Date	Page No
2021	David Kelly	Armour AS	0	22/02/2021	15

Item No:	10	Sample No:	N/A
Location:	Ground Floor - Garage - Office - Off Drill Hall Garage 010		



Material Description:	Fibreboard Wall Panels - Paper Product	
Identification:	Previously Sampled - Asbestos Detected	
Approx. quantity:	24 m ²	
Accessibility	Easy	Assessment Score
Product type:	Cement	1
Extent of Damage:	Slight / minor damage	1
Surface Treatment:	Paper	1
Asbestos type:	Chrysotile	1
Material Assessment Score:		4
Priority Assessment Score:		Negligible
Action:	Encapsulate	
Comments:	Previously sampled ref: Armour 11/11/19 sample DK/5.	

Document Name	Author	Issued by	Revision Number	Issue Date	Page No
2021	David Kelly	Armour AS	0	22/02/2021	16

Item No: 11

Sample No: N/A

Location: Ground Floor - Garage - Bar/Mess 011



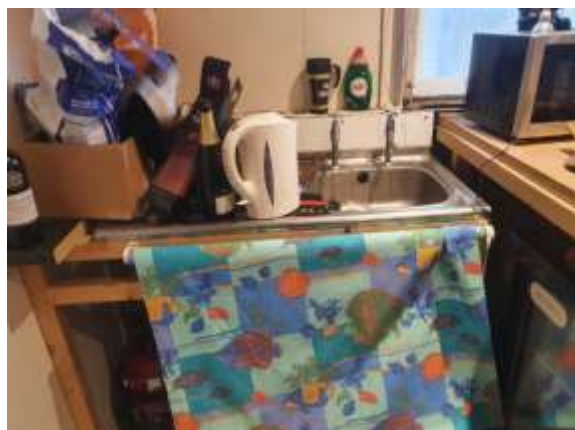
Material Description:	Fibreboard Wall Panels - Paper Product	
Identification:	Previously Sampled - Asbestos Detected	
Approx. quantity:	14 m ²	
Accessibility	Easy	Assessment Score
Product type:	Paper	2
Extent of Damage:	Moderate damage	2
Surface Treatment:	Paper	1
Asbestos type:	Chrysotile	1
Material Assessment Score:		6
Priority Assessment Score:		Low
Action:	Encapsulate	
Comments:	Previously sampled ref: Armour 11/11/19 sample DK/5.	

Document Name	Author	Issued by	Revision Number	Issue Date	Page No
2021	David Kelly	Armour AS	0	22/02/2021	17

Item No: 12

Sample No: N/A

Location: Ground Floor - Garage - Bar/Mess 012



Material Description:	Sink Pad - Bituminous Product	
Identification:	Previously Sampled - Asbestos Detected	
Approx. quantity:	1 no	
Accessibility	Medium	Assessment Score
Product type:	Paper	2
Extent of Damage:	Slight / minor damage	1
Surface Treatment:	Non-friable	0
Asbestos type:	Chrysotile	1
Material Assessment Score:		4
Priority Assessment Score:		Negligible
Action:	Manage	
Comments:	Previously sampled ref: Armour 11/11/19 sample DK/6	

Document Name	Author	Issued by	Revision Number	Issue Date	Page No
2021	David Kelly	Armour AS	0	22/02/2021	18

Item No: 13

Sample No: N/A

Location: Ground Floor - Service Garage 013



Material Description:	Cement Panel Packer - Cement Product	
Identification:	Previously Sampled - Asbestos Detected	
Approx. quantity:	<1 LM	
Accessibility	Medium	Assessment Score
Product type:	Cement	1
Extent of Damage:	Moderate damage	2
Surface Treatment:	Unsealed Cement	1
Asbestos type:	Chrysotile	1
Material Assessment Score:		5
Priority Assessment Score:		Low
Action:	Encapsulate	
Comments:	Previously sampled ref: Armour 11/11/19 sample DK/8	

Document Name	Author	Issued by	Revision Number	Issue Date	Page No
2021	David Kelly	Armour AS	0	22/02/2021	19

Item No: 14

Sample No: N/A

Location: Ground Floor - Garage - Stores x 2 014



Material Description:	Fiberboard Wall Panels - Paper Product	
Identification:	Previously Sampled - Asbestos Detected	
Approx. quantity:	24 m ²	
Accessibility	Easy	<i>Assessment Score</i>
Product type:	Paper	2
Extent of Damage:	Slight / minor damage	1
Surface Treatment:	Paper	1
Asbestos type:	Chrysotile	1
Material Assessment Score:		5
Priority Assessment Score:		Low
Action:	Encapsulate	
Comments:	Previously sampled ref: Armour 11/11/19 sample DK/5	

Document Name	Author	Issued by	Revision Number	Issue Date	Page No
2021	David Kelly	Armour AS	0	22/02/2021	20

Item No: 15

Sample No: N/A

Location: First Floor - Main Building - Stores - Mezzanine 015



Material Description:	Promenade Floor Tiles - Cement Product	
Identification:	Previously Sampled - Asbestos Detected	
Approx. quantity:	72 m ²	
Accessibility	Easy	<i>Assessment Score</i>
Product type:	Paper	2
Extent of Damage:	Moderate damage	2
Surface Treatment:	Unsealed Cement	1
Asbestos type:	Chrysotile	1
Material Assessment Score:		6
Priority Assessment Score:		Low
Action:	Manage	
Comments:	Previously sampled ref: Armour 11/11/19 sample DK/12	

Document Name	Author	Issued by	Revision Number	Issue Date	Page No
2021	David Kelly	Armour AS	0	22/02/2021	21

Item No: 16

Sample No: N/A

Location: Ground Floor - Main Building - Stores - Lobby and Cupboard 016



Material Description:	Cream and Grey Floor Tiles - Vinyl Products	
Identification:	Previously Sampled - Asbestos Detected	
Approx. quantity:	8 m ²	
Accessibility	Easy	Assessment Score
Product type:	Paper	2
Extent of Damage:	Moderate damage	2
Surface Treatment:	Non-friable	0
Asbestos type:	Chrysotile	1
Material Assessment Score:		5
Priority Assessment Score:		Low
Action:	Manage	
Comments:	Previously sampled ref: Armour 11/11/19 sample DK/13	

Document Name	Author	Issued by	Revision Number	Issue Date	Page No
2021	David Kelly	Armour AS	0	22/02/2021	22

Item No: 17

Sample No: N/A

Location: First Floor - Main Building - Stores - Store G1098 and Mezzanine 017



Material Description:	Promenade Tiles - Cement Product	
Identification:	Previously Sampled - Asbestos Detected	
Approx. quantity:	75 m ²	
Accessibility	Easy	<i>Assessment Score</i>
Product type:	Cement	1
Extent of Damage:	Moderate damage	2
Surface Treatment:	Unsealed Cement	1
Asbestos type:	Chrysotile	1
Material Assessment Score:		5
Priority Assessment Score:		Low
Action:	Manage	
Comments:	Previously sampled ref: Armour 11/11/19 sample DK/12	

Document Name	Author	Issued by	Revision Number	Issue Date	Page No
2021	David Kelly	Armour AS	0	22/02/2021	23

Item No: 18

Sample No: N/A

Location: Ground Floor - Main Building - Stores - Kitchen 018



Material Description:	Sink Pad - Bituminous Product	
Identification:	Previously Sampled - Asbestos Detected	
Approx. quantity:	4 no	
Accessibility	Medium	<i>Assessment Score</i>
Product type:	Bitumen	1
Extent of Damage:	Moderate damage	2
Surface Treatment:	Non-friable	0
Asbestos type:	Chrysotile	1
Material Assessment Score:		4
Priority Assessment Score:		Negligible
Action:	Manage	
Comments:	Previously sampled ref: Armour 11/11/19 sample DK/14	

Document Name	Author	Issued by	Revision Number	Issue Date	Page No
2021	David Kelly	Armour AS	0	22/02/2021	24

Item No: 19

Sample No: N/A

Location: Ground Floor - Main Building - Drill Hall 019



Material Description:	Adhesive under Parquet Flooring - Bituminous Product	
Identification:	Previously Sampled - Asbestos Detected	
Approx. quantity:	180 m ²	
Accessibility	Difficult	Assessment Score
Product type:	Bitumen	1
Extent of Damage:	Slight / minor damage	1
Surface Treatment:	Non-friable	0
Asbestos type:	Chrysotile	1
Material Assessment Score:		3
Priority Assessment Score:		Negligible
Action:	Manage	
Comments:	Previously sampled ref: Armour 11/11/19 sample DK/15	

Document Name	Author	Issued by	Revision Number	Issue Date	Page No
2021	David Kelly	Armour AS	0	22/02/2021	25

Item No: 20

Sample No: N/A

Location: First Floor - Main Building - Kitchen 020



Material Description:	Floor Tiles and Adhesive - Vinyl Products	
Identification:	Previously Sampled - Asbestos Detected	
Approx. quantity:	4 m ²	
Accessibility	Easy	<i>Assessment Score</i>
Product type:	Vinyl	1
Extent of Damage:	Slight / minor damage	1
Surface Treatment:	Non-friable	0
Asbestos type:	Chrysotile	1
Material Assessment Score:		3
Priority Assessment Score:		Negligible
Action:	Manage	
Comments:	Previously sampled ref: Armour 11/11/19 sample DK/16	

Document Name	Author	Issued by	Revision Number	Issue Date	Page No
2021	David Kelly	Armour AS	0	22/02/2021	26

Item No: 21

Sample No: N/A

Location: External - Main Building - Drill Hall Roof 021



Material Description:	Rope Seals to Skylights - Gaskets (rope/woven)	
Identification:	Strongly Presumed to Contain Asbestos	
Approx. quantity:	4 no	
Accessibility	Difficult	<i>Assessment Score</i>
Product type:	Rope	2
Extent of Damage:	Slight / minor damage	1
Surface Treatment:	Woven Material	1
Asbestos type:	Chrysotile	1
Material Assessment Score:		5
Priority Assessment Score:		Low
Action:	Manage	
Comments:	No safe access to sample	

Document Name	Author	Issued by	Revision Number	Issue Date	Page No
2021	David Kelly	Armour AS	0	22/02/2021	27

Item No: 22

Sample No: N/A

Location: First Floor - Main Building - Admin Office F4 and Office 022



Material Description:	Floor Tiles and Adhesive - Vinyl Products	
Identification:	Previously Sampled - Asbestos Detected	
Approx. quantity:	24 m ²	
Accessibility	Easy	<i>Assessment Score</i>
Product type:	Vinyl	1
Extent of Damage:	Slight / minor damage	1
Surface Treatment:	Non-friable	0
Asbestos type:	Chrysotile	1
Material Assessment Score:		3
Priority Assessment Score:		Negligible
Action:	Manage	
Comments:	Previously sampled ref: Armour 11/11/19 sample DK/17. Under carpet	

Document Name	Author	Issued by	Revision Number	Issue Date	Page No
2021	David Kelly	Armour AS	0	22/02/2021	28

Item No: 23

Sample No: N/A

Location: First Floor - Main Building - F12 Cleaners Cupboard 023



Material Description:	Floor Tiles and Adhesive - Vinyl Products	
Identification:	Previously Sampled - Asbestos Detected	
Approx. quantity:	1 m ²	
Accessibility	Easy	<i>Assessment Score</i>
Product type:	Vinyl	1
Extent of Damage:	Moderate damage	2
Surface Treatment:	Non-friable	0
Asbestos type:	Chrysotile	1
Material Assessment Score:		4
Priority Assessment Score:		Negligible
Action:	Manage	
Comments:	Previously sampled ref: Armour 11/11/19 sample DK/20	

Document Name	Author	Issued by	Revision Number	Issue Date	Page No
2021	David Kelly	Armour AS	0	22/02/2021	29

Item No: 24

Sample No: N/A

Location: First Floor - Main Building - F17 Store 024



Material Description:	Floor Tiles and Adhesive - Vinyl Products	
Identification:	Previously Sampled - Asbestos Detected	
Approx. quantity:	4 m ²	
Accessibility	Easy	<i>Assessment Score</i>
Product type:	Vinyl	1
Extent of Damage:	Slight / minor damage	1
Surface Treatment:	Non-friable	0
Asbestos type:	Chrysotile	1
Material Assessment Score:		3
Priority Assessment Score:		Negligible
Action:	Manage	
Comments:	Previously sampled ref: Armour 11/11/19 sample DK/16	

Document Name	Author	Issued by	Revision Number	Issue Date	Page No
2021	David Kelly	Armour AS	0	22/02/2021	30

Item No: 25

Sample No: N/A

Location: First Floor - Main Building - PSI Office 025



Material Description:	Floor Tiles and Adhesive - Vinyl Products	
Identification:	Previously Sampled - Asbestos Detected	
Approx. quantity:	20 m ²	
Accessibility	Difficult	<i>Assessment Score</i>
Product type:	Vinyl	1
Extent of Damage:	Slight / minor damage	1
Surface Treatment:	Non-friable	0
Asbestos type:	Chrysotile	1
Material Assessment Score:		3
Priority Assessment Score:		Negligible
Action:	Manage	
Comments:	Previously sampled ref: Armour 11/11/19 sample DK/20. Under carpet.	

Document Name	Author	Issued by	Revision Number	Issue Date	Page No
2021	David Kelly	Armour AS	0	22/02/2021	31

Item No: 26

Sample No: N/A

Location: First Floor - Main Building - Office F6 and Cupboard 026



Material Description:	Floor Tiles and Adhesive - Vinyl Products	
Identification:	Previously Sampled - Asbestos Detected	
Approx. quantity:	14 m ²	
Accessibility	Medium	<i>Assessment Score</i>
Product type:	Vinyl	1
Extent of Damage:	Slight / minor damage	1
Surface Treatment:	Non-friable	0
Asbestos type:	Chrysotile	1
Material Assessment Score:		3
Priority Assessment Score:		Negligible
Action:	Manage	
Comments:	Previously sampled ref: Armour 11/11/19 sample DK/20. Under carpet in office	

Document Name	Author	Issued by	Revision Number	Issue Date	Page No
2021	David Kelly	Armour AS	0	22/02/2021	32

Item No: 27

Sample No: N/A

Location: First Floor - Main Building - Kitchen, Cupboard and WC
027



Material Description:	Floor Tiles and Adhesive - Vinyl Products	
Identification:	Previously Sampled - Asbestos Detected	
Approx. quantity:	8 m ²	
Accessibility	Easy	<i>Assessment Score</i>
Product type:	Vinyl	1
Extent of Damage:	Slight / minor damage	1
Surface Treatment:	Non-friable	0
Asbestos type:	Chrysotile	1
Material Assessment Score:		3
Priority Assessment Score:		Negligible
Action:	Manage	
Comments:	Previously sampled ref: Armour 11/11/19 sample DK/22	

Document Name	Author	Issued by	Revision Number	Issue Date	Page No
2021	David Kelly	Armour AS	0	22/02/2021	33

Item No: 28

Sample No: N/A

Location: First Floor - Main Building - Office F7 and Classroom F10 028



Material Description:	Floor Tiles and Adhesive - Vinyl Products	
Identification:	Previously Sampled - Asbestos Detected	
Approx. quantity:	25 m ²	
Accessibility	Difficult	Assessment Score
Product type:	Vinyl	1
Extent of Damage:	Slight / minor damage	1
Surface Treatment:	Non-friable	0
Asbestos type:	Chrysotile	1
Material Assessment Score:		3
Priority Assessment Score:		Negligible
Action:	Manage	
Comments:	Previously sampled ref: Armour 11/11/19 sample DK/21. Under carpet	

Document Name	Author	Issued by	Revision Number	Issue Date	Page No
2021	David Kelly	Armour AS	0	22/02/2021	34

Item No: 29

Sample No: N/A

Location: Ground Floor - Main Building - IT Suite and Server Room 029



Material Description:	Floor Tiles and Adhesive - Vinyl Products	
Identification:	Previously Sampled - Asbestos Detected	
Approx. quantity:	35 m ²	
Accessibility	Difficult	Assessment Score
Product type:	Vinyl	1
Extent of Damage:	Slight / minor damage	1
Surface Treatment:	Non-friable	0
Asbestos type:	Chrysotile	1
Material Assessment Score:		3
Priority Assessment Score:		Negligible
Action:	Manage	
Comments:	Previously sampled ref: Armour 11/11/19 sample DK/23. Under carpet	

Document Name	Author	Issued by	Revision Number	Issue Date	Page No
2021	David Kelly	Armour AS	0	22/02/2021	35

Item No: 30

Sample No: N/A

Location: Ground Floor - Main Building - Cupboard 030



Material Description:	Floor Tiles and Adhesive and Debris - Vinyl Products	
Identification:	Previously Sampled - Asbestos Detected	
Approx. quantity:	1 m ²	
Accessibility	Difficult	<i>Assessment Score</i>
Product type:	Vinyl	1
Extent of Damage:	Major damage	3
Surface Treatment:	Non-friable	0
Asbestos type:	Chrysotile	1
Material Assessment Score:		5
Priority Assessment Score:		Low
Action:	Remove	
Comments:	Previously sampled ref: Armour 11/11/19 sample DK/23. Remove Debris and manage tiles	

Document Name	Author	Issued by	Revision Number	Issue Date	Page No
2021	David Kelly	Armour AS	0	22/02/2021	36

Item No: 31

Sample No: N/A

Location: Ground Floor - Main Building - Lobby (Side Entrance)
031



Material Description:	Wall and Door Panels - Insulating Board	
Identification:	Previously Sampled - Asbestos Detected	
Approx. quantity:	5 m ²	
Accessibility	Easy	Assessment Score
Product type:	Asbestos Insulating Board	2
Extent of Damage:	Slight / minor damage	1
Surface Treatment:	Unsealed AIB	2
Asbestos type:	Amosite	2
Material Assessment Score:		7
Priority Assessment Score:		Medium
Action:	Encapsulate	
Comments:	Previously sampled ref: Armour 11/11/19 sample DK/24. Encapsulate or remove and restrict access to cupboard	

Document Name	Author	Issued by	Revision Number	Issue Date	Page No
2021	David Kelly	Armour AS	0	22/02/2021	37

Item No: 32

Sample No: N/A

Location: Ground Floor - Main Building - Lobby (Side Entrance)
032



Material Description:	Door Header Panel - Insulating Board	
Identification:	Previously Sampled - Asbestos Detected	
Approx. quantity:	1 m ²	
Accessibility	Difficult	Assessment Score
Product type:	Asbestos Insulating Board	2
Extent of Damage:	Slight / minor damage	1
Surface Treatment:	Encapsulated AIB	1
Asbestos type:	Amosite	2
Material Assessment Score:		6
Priority Assessment Score:		Low
Action:	Manage	
Comments:	Previously sampled ref: Armour 11/11/19 sample DK/24	

Document Name	Author	Issued by	Revision Number	Issue Date	Page No
2021	David Kelly	Armour AS	0	22/02/2021	38

Item No: 33

Sample No: N/A

Location: First Floor - Main Building - PSAO Office and OC Office
033



Material Description:	Floor Tiles and Adhesive and Debris - Vinyl Products	
Identification:	Previously Sampled - Asbestos Detected	
Approx. quantity:	32 m ²	
Accessibility	Difficult	Assessment Score
Product type:	Vinyl	1
Extent of Damage:	Slight / minor damage	1
Surface Treatment:	Non-friable	0
Asbestos type:	Chrysotile	1
Material Assessment Score:		3
Priority Assessment Score:		Negligible
Action:	Manage	
Comments:	Previously sampled ref: Armour 11/11/19 sample DK/23. Under carpet	

Document Name	Author	Issued by	Revision Number	Issue Date	Page No
2021	David Kelly	Armour AS	0	22/02/2021	39

Item No: 34

Sample No: N/A

Location: Ground Floor - Main Building - Offices G1 and G2 034



Material Description:	Floor Tiles and Adhesive and Debris - Vinyl Products	
Identification:	Previously Sampled - Asbestos Detected	
Approx. quantity:	24 m ²	
Accessibility	Difficult	<i>Assessment Score</i>
Product type:	Vinyl	1
Extent of Damage:	Slight / minor damage	1
Surface Treatment:	Non-friable	0
Asbestos type:	Chrysotile	1
Material Assessment Score:		3
Priority Assessment Score:		Negligible
Action:	Manage	
Comments:	Previously sampled ref: Armour 11/11/19 sample DK/23. Under carpet	

Document Name	Author	Issued by	Revision Number	Issue Date	Page No
2021	David Kelly	Armour AS	0	22/02/2021	40

Item No: 35

Sample No: N/A

Location: Ground Floor - Main Building - Corridor 035



Material Description:	Door Header Panel - Insulating Board	
Identification:	Previously Sampled - Asbestos Detected	
Approx. quantity:	1 m ²	
Accessibility	Difficult	<i>Assessment Score</i>
Product type:	Asbestos Insulating Board	2
Extent of Damage:	Slight / minor damage	1
Surface Treatment:	Encapsulated AIB	1
Asbestos type:	Amosite	2
Material Assessment Score:		6
Priority Assessment Score:		Low
Action:	Manage	
Comments:	Previously sampled ref: Armour 11/11/19 sample DK/24	

Document Name	Author	Issued by	Revision Number	Issue Date	Page No
2021	David Kelly	Armour AS	0	22/02/2021	41

Item No: 36

Sample No: N/A

Location: Ground Floor - Main Building - Men's WC 036



Material Description:	Toilet Seat - PVC / Reinforced Plastics	
Identification:	Presumed to Contain Asbestos	
Approx. quantity:	1 no	
Accessibility	Easy	<i>Assessment Score</i>
Product type:	Bakelite	1
Extent of Damage:	Slight / minor damage	1
Surface Treatment:	Non-friable	0
Asbestos type:	Chrysotile	1
Material Assessment Score:		3
Priority Assessment Score:		Negligible
Action:	Manage	
Comments:	Not possible to sample as may damage integrity of the seat	

Document Name	Author	Issued by	Revision Number	Issue Date	Page No
2021	David Kelly	Armour AS	0	22/02/2021	42

Item No: 37

Sample No: N/A

Location: Ground Floor - Main Building - Switch room 037



Material Description:	Electrical Panels - Gaskets (rope/woven)	
Identification:	Strongly Presumed to Contain Asbestos	
Approx. quantity:	16 no	
Accessibility	Difficult	<i>Assessment Score</i>
Product type:	Bakelite	1
Extent of Damage:	Slight / minor damage	1
Surface Treatment:	Woven Material	1
Asbestos type:	Chrysotile	1
Material Assessment Score:		4
Priority Assessment Score:		Negligible
Action:	Manage	
Comments:	No access within electrical panels as live	

Document Name	Author	Issued by	Revision Number	Issue Date	Page No
2021	David Kelly	Armour AS	0	22/02/2021	43

Item No: 38

Sample No: N/A

Location: Ground Floor - Main Building - Boiler Room 038



Material Description:	Gaskets - Gaskets (compressed)	
Identification:	Presumed to Contain Asbestos	
Approx. quantity:	4 no	
Accessibility	Difficult	<i>Assessment Score</i>
Product type:	Rope	2
Extent of Damage:	Slight / minor damage	1
Surface Treatment:	Woven Material	1
Asbestos type:	Chrysotile	1
Material Assessment Score:		5
Priority Assessment Score:		Low
Action:	Manage	
Comments:	Gaskets are too tight within flanges to sample	

Document Name	Author	Issued by	Revision Number	Issue Date	Page No
2021	David Kelly	Armour AS	0	22/02/2021	44

Item No: 39

Sample No: N/A

Location: External - Main Building 039



Material Description:	Downpipes - Cement Product	
Identification:	Previously Sampled - Asbestos Detected	
Approx. quantity:	11 no	
Accessibility	Medium	<i>Assessment Score</i>
Product type:	Cement	1
Extent of Damage:	Moderate damage	2
Surface Treatment:	Unsealed Cement	1
Asbestos type:	Amosite, Chrysotile	2
Material Assessment Score:		6
Priority Assessment Score:		Low
Action:	Manage	
Comments:	Previously sampled ref: Armour 11/11/19 sample DK/25. 11no, approx. 60LM	

Document Name	Author	Issued by	Revision Number	Issue Date	Page No
2021	David Kelly	Armour AS	0	22/02/2021	45

Item No: 40

Sample No: N/A

Location: External - Main Building 040



Material Description:	Guttering - Cement Product	
Identification:	Previously Sampled - Asbestos Detected	
Approx. quantity:	126 LM	
Accessibility	Difficult	<i>Assessment Score</i>
Product type:	Cement	1
Extent of Damage:	Slight / minor damage	1
Surface Treatment:	Unsealed Cement	1
Asbestos type:	Amosite, Chrysotile	2
Material Assessment Score:		5
Priority Assessment Score:		Low
Action:	Manage	
Comments:	Previously sampled ref: Armour 11/11/19 sample DK/25. 4 Sections, 126LM	

Document Name	Author	Issued by	Revision Number	Issue Date	Page No
2021	David Kelly	Armour AS	0	22/02/2021	46

Item No: 41

Sample No: N/A

Location: External - Main Building 041



Material Description:	Under cloaking - Cement Product	
Identification:	Strongly Presumed to Contain Asbestos	
Approx. quantity:	34 LM	
Accessibility	Difficult	<i>Assessment Score</i>
Product type:	Cement	1
Extent of Damage:	Slight / minor damage	1
Surface Treatment:	Unsealed Cement	1
Asbestos type:	Chrysotile	1
Material Assessment Score:		4
Priority Assessment Score:		Negligible
Action:	Manage	
Comments:	4 sections of under cloaking, 34LM	

Document Name	Author	Issued by	Revision Number	Issue Date	Page No
2021	David Kelly	Armour AS	0	22/02/2021	47

Item No: 42

Sample No: N/A

Location: Ground Floor - Main Building - Office 042



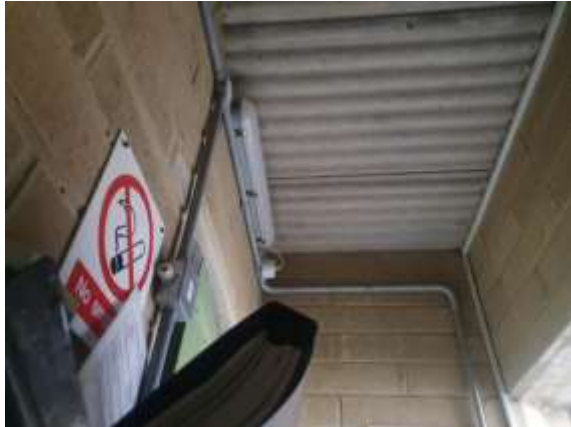
Material Description:	Floor Tiles and Adhesive and Debris - Vinyl Products	
Identification:	Previously Sampled - Asbestos Detected	
Approx. quantity:	10 m ²	
Accessibility	Difficult	<i>Assessment Score</i>
Product type:	Vinyl	1
Extent of Damage:	Slight / minor damage	1
Surface Treatment:	Non-friable	0
Asbestos type:	Chrysotile	1
Material Assessment Score:		3
Priority Assessment Score:		Negligible
Action:	Manage	
Comments:	Previously sampled ref: Armour 11/11/19 sample DK/23. Under carpet	

Document Name	Author	Issued by	Revision Number	Issue Date	Page No
2021	David Kelly	Armour AS	0	22/02/2021	48

Item No: 43

Sample No: N/A

Location: Ground Floor - External Armoury 043



Material Description:	Profiled Cement Roof - Cement Product	
Identification:	Presumed to Contain Asbestos	
Approx. quantity:	12 m ²	
Accessibility	Difficult	<i>Assessment Score</i>
Product type:	Cement	1
Extent of Damage:	Major damage	3
Surface Treatment:	Unsealed Insulation	3
Asbestos type:	Chrysotile	1
Material Assessment Score:		8
Priority Assessment Score:		Medium
Action:	Manage	
Comments:	N/A	

Document Name	Author	Issued by	Revision Number	Issue Date	Page No
2021	David Kelly	Armour AS	0	22/02/2021	49

Section 5: Negative Items

Item No:	7	Sample No:	N/A
Location:	Ground Floor - ATC Hut - Store 007		



Material Description:	No Suspect Materials Found	
Identification:	N/A	
Approx. quantity:	N/A	
Accessibility	N/A	<i>Assessment Score</i>
Product type:	N/A	N/A
Extent of Damage:	N/A	N/A
Surface Treatment:	N/A	N/A
Asbestos type:	N/A	N/A
Material Assessment Score:		N/A
Priority Assessment Score:		N/A
Action:	N/A	
Comments:	Previously a no access area. Now accessed and no asbestos found	

Document Name	Author	Issued by	Revision Number	Issue Date	Page No
2021	David Kelly	Armour AS	0	22/02/2021	50



Section 6: Survey Objectives

Instructions were received from Kelvin Walker of Wessex RFCA to carry out a Re-Inspection asbestos survey at 6th Battalion, Gloucestershire, GL4 3BD in accordance with HSG264 and Armour Analytical's quality procedures.

The survey was carried out on 16 February 2021 by David Kelly with the objective of facilitating a Re-Inspection report.

Document Name	Author	Issued by	Revision Number	Issue Date	Page No
2021	David Kelly	Armour AS	0	22/02/2021	51



Section 7: Survey Notes

This report has been written with reference to the various Guidance Notes etc, issued, and current at the date of this report and describes circumstances at the site on the date the investigation took place.

Where similar items exist in the building, only one or two samples may have been taken to ascertain the material content. It was assumed that similar products were of the same material.

Any person undertaking work within the buildings should be told of the presence of asbestos. This briefing also applies to any other person associated with the site, including staff, sub-contractors and others.

The drawings in the report are not to scale and are illustrative only to indicate approximate locations. The descriptions used are for location identification purposes.

All the recommendations described in this report are based upon assumptions made after consideration of the type of material, condition of the material, its location, analysis result and type of use the area is thought to be subjected to. However, statutory authorities or others could require amendments based on local knowledge, change in legislation, change in use or indeed other conditions or criteria.

Samples taken from floor tiles (or similar material) may include a bitumen adhesive as part of the sample. It is known that some proprietary brands of bitumen have an asbestos content and this will be included as an integral part of the bulk sample unless otherwise stated.

Due to the artex being non-homogenous, it is recommended to treat all areas as containing asbestos if you have a positive sample of artex.

Document Name	Author	Issued by	Revision Number	Issue Date	Page No
2021	David Kelly	Armour AS	0	22/02/2021	52

Section 8: Material Assessment Algorithm

Variable	Score	Examples
Product type	1	Vinyl, 'Bakelite', Cement, Textured Coating, Non-Friable Debris, Floor Tiles, Bitumen, Reinforced Plastics, Mastic (putty), Windowsills
	2	Asbestos Insulating Board, Paper, Rope, Burned Cement Debris, Flashguards, Gaskets
	3	Pipe Insulation, Spray Coating, Friable Debris, Loose Fill Asbestos
Condition / Damage	0	Good
	1	Slight / Minor Damage
	2	Moderate Damage – Breakage to Surface Treatment
	3	Major Damage – Smashed or Exposed Material
Surface Treatment	0	Non-Friable E.G. Vinyl
	1	Enclosed Insulation, Encapsulated AIB, Unsealed Cement, Woven Material, Paper
	2	Unsealed AIB, Encapsulated Insulation, Encapsulated Pipe Lagging
	3	Unsealed Insulation, Spray Coating, Unsealed Pipe Lagging
Asbestos Type	1	Chrysotile
	2	Amosite and Other Amphiboles
	3	Crocidolite

The scores from each of the four sections are added together to produce a risk score:

Risk score	Risk assessment
10 or more	High risk
7 – 9	Medium risk
5 – 6	Low risk
4 and below	Negligible risk

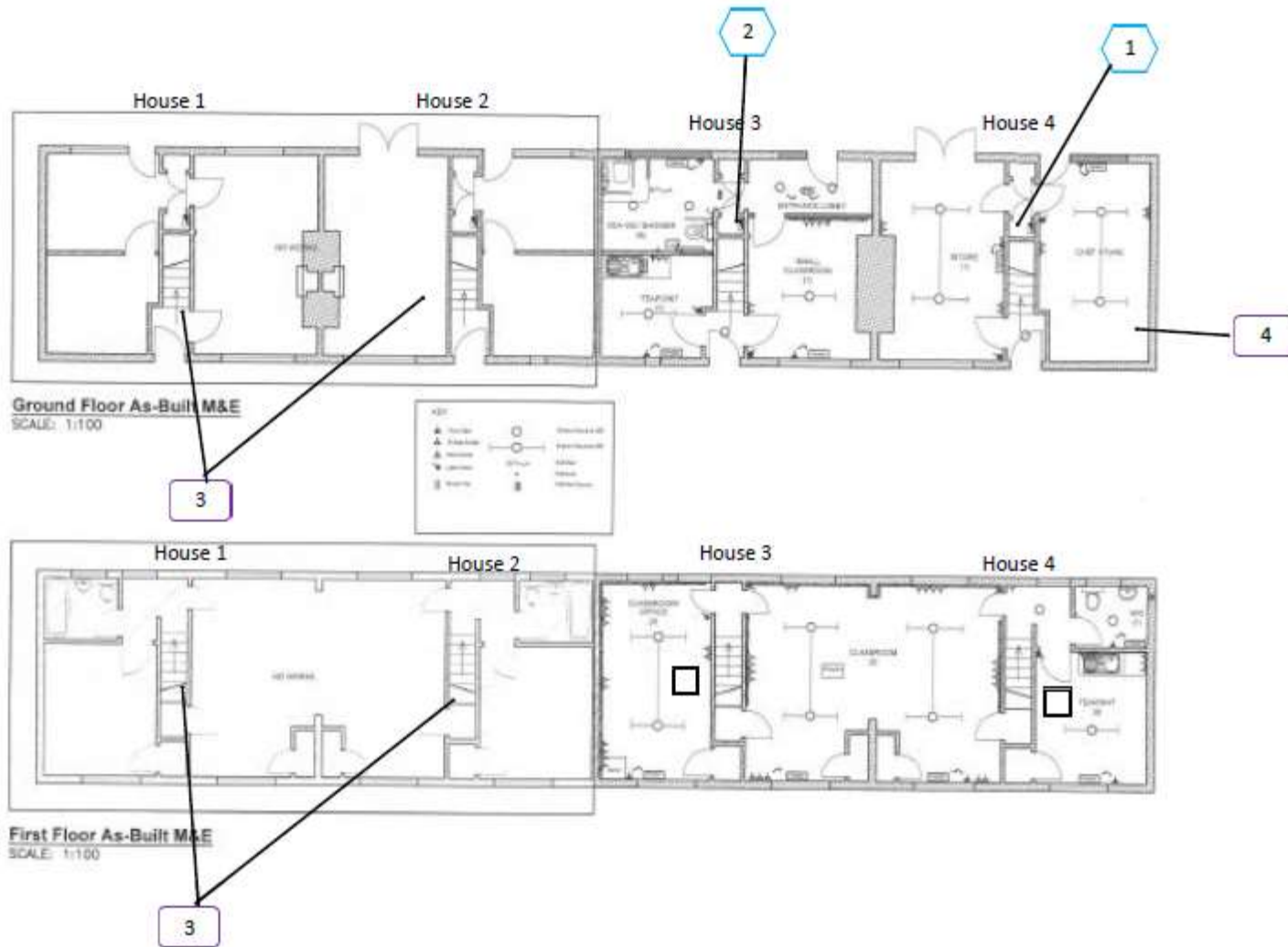


Section 9: Certificates of Bulk Analysis

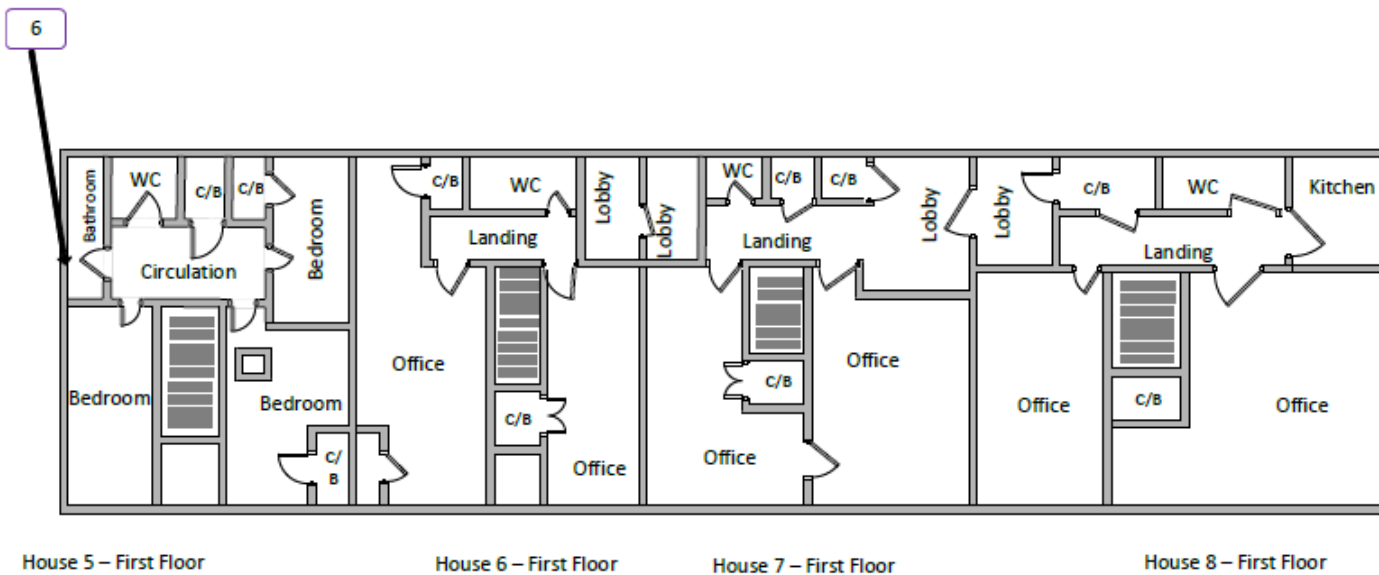
No samples were taken during this survey.

Document Name	Author	Issued by	Revision Number	Issue Date	Page No
2021	David Kelly	Armour AS	0	22/02/2021	54

Section 10: Site Plan

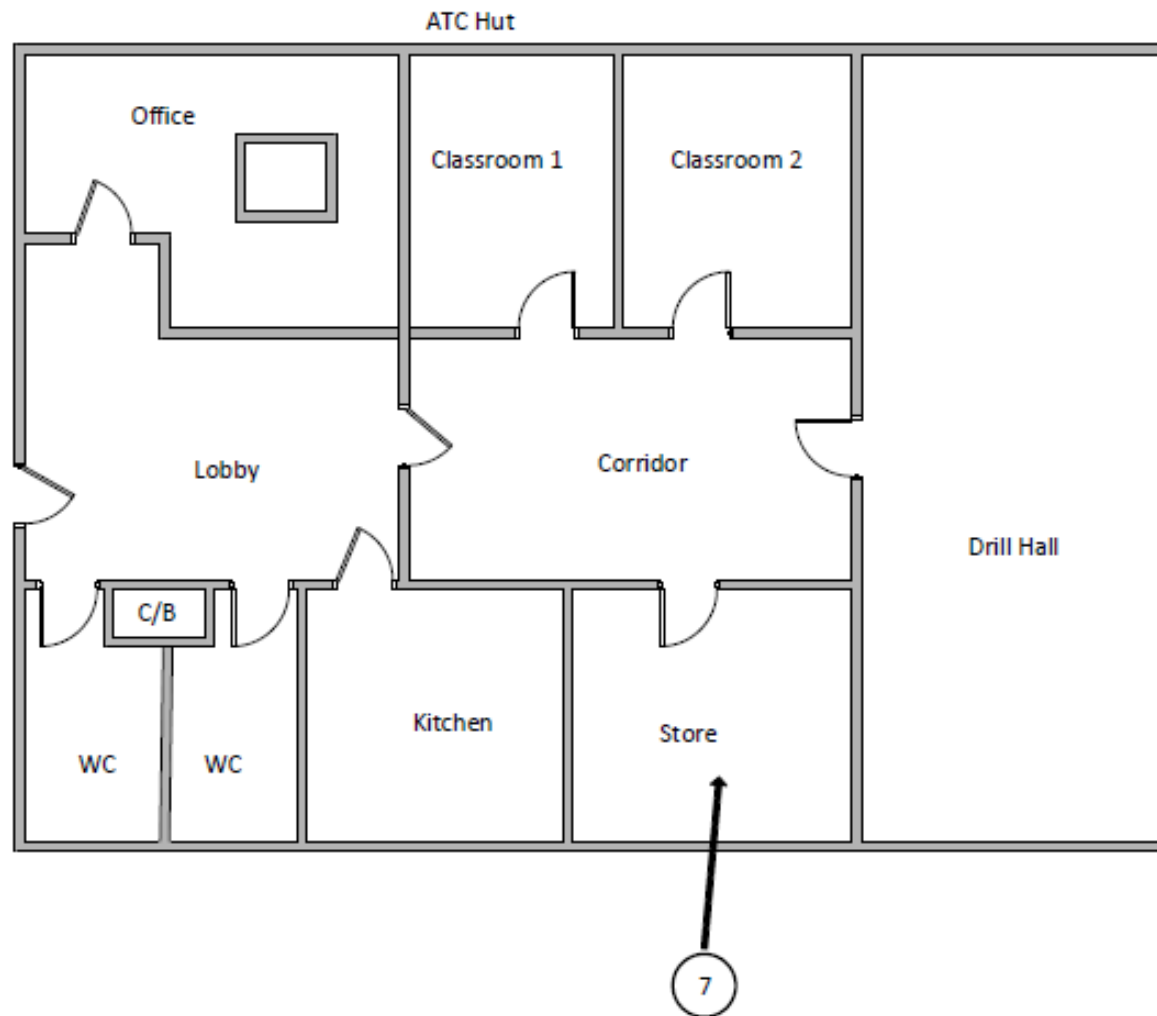


Document Name	Author	Issued by	Revision Number	Issue Date	Page No
2021	David Kelly	Armour AS	0	22/02/2021	55



Key	
	Visual Inspection
	Asbestos Detected (Positive Item)
	No Asbestos Detected (Negative Item)
	Presumed to Contain Asbestos
	Strongly Presumed to Contain Asbestos
	No Access

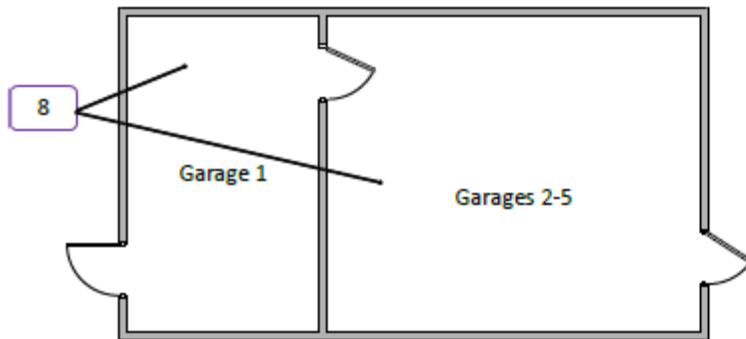
Document Name	Author	Issued by	Revision Number	Issue Date	Page No
2021	David Kelly	Armour AS	0	22/02/2021	56



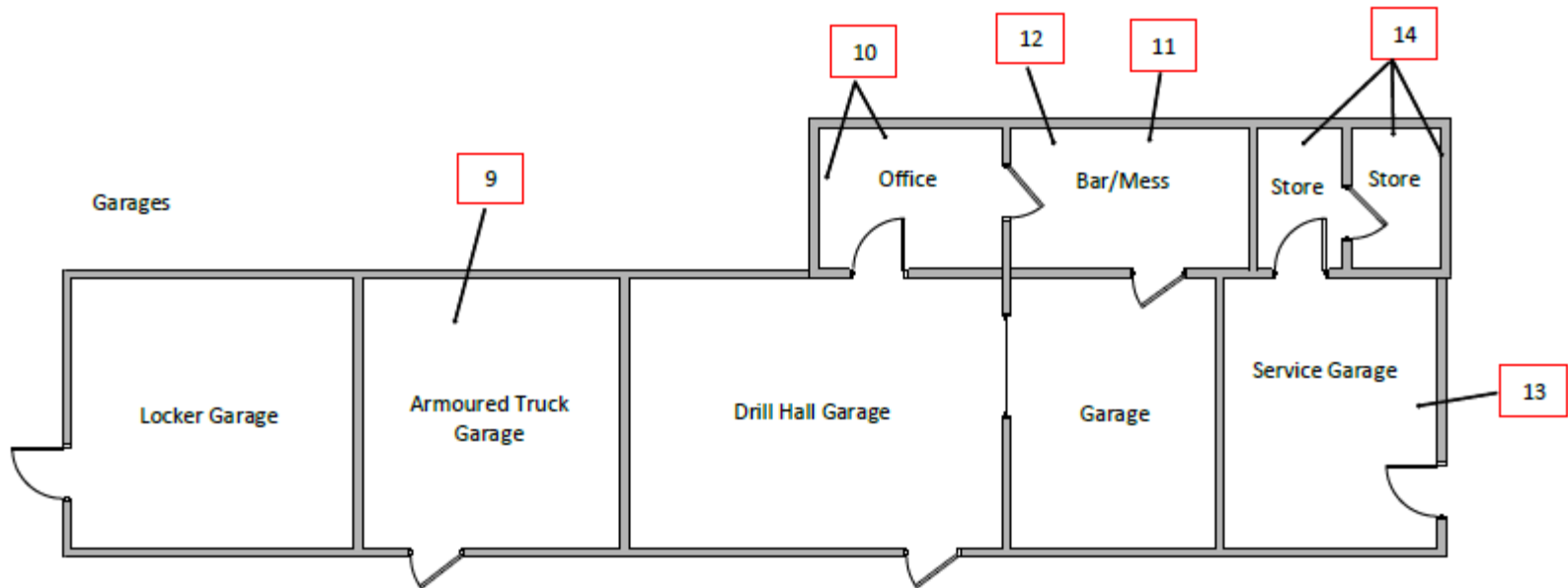
Key	
	Visual Inspection
	Asbestos Detected (Positive Result)
	No Asbestos Detected (Negative Result)
	Presumed to Contain Asbestos
	Strongly Presumed to Contain Asbestos
	No Access

Document Name	Author	Issued by	Revision Number	Issue Date	Page No
2021	David Kelly	Armour AS	0	22/02/2021	57

Garages 1-5

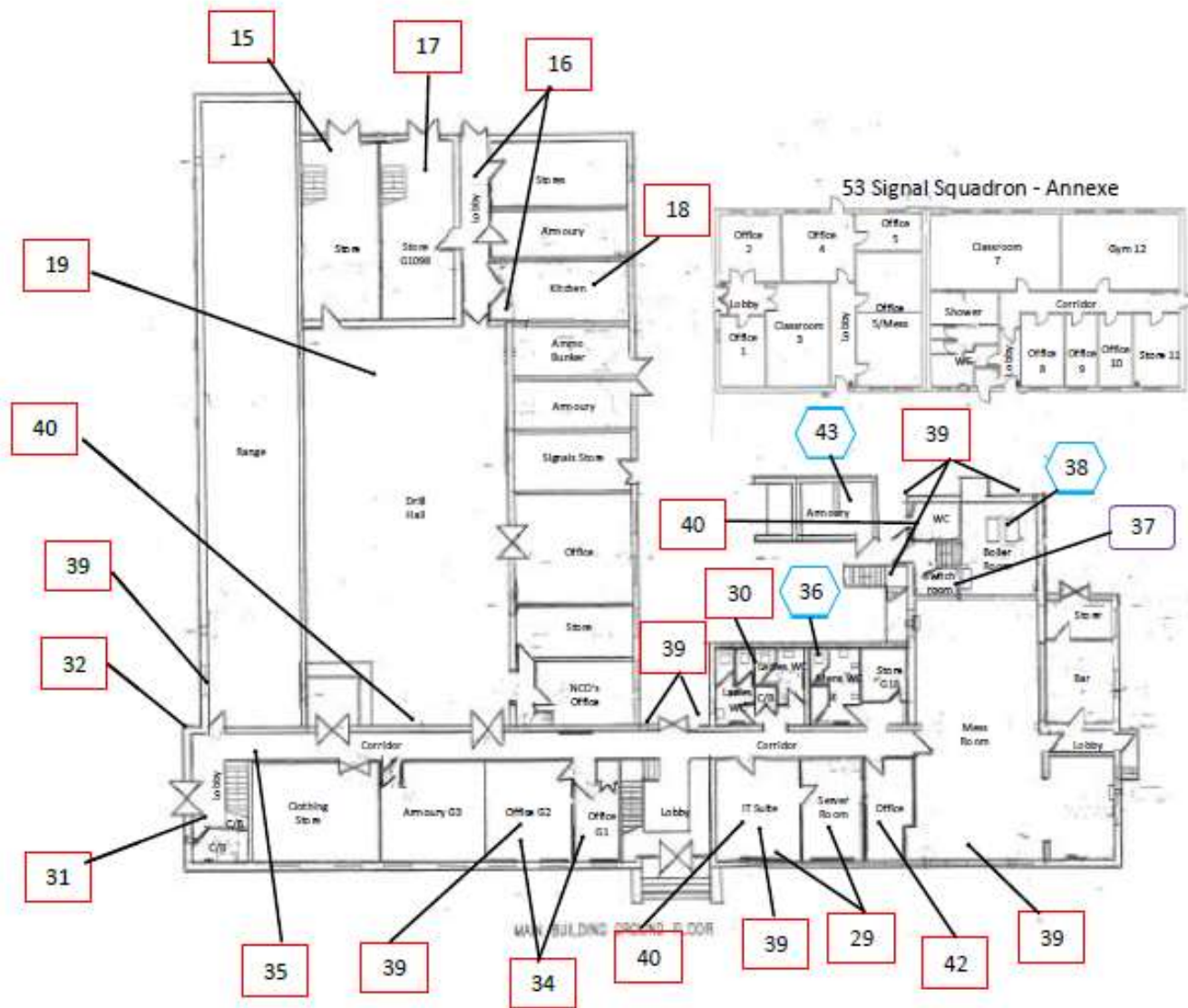


Garages

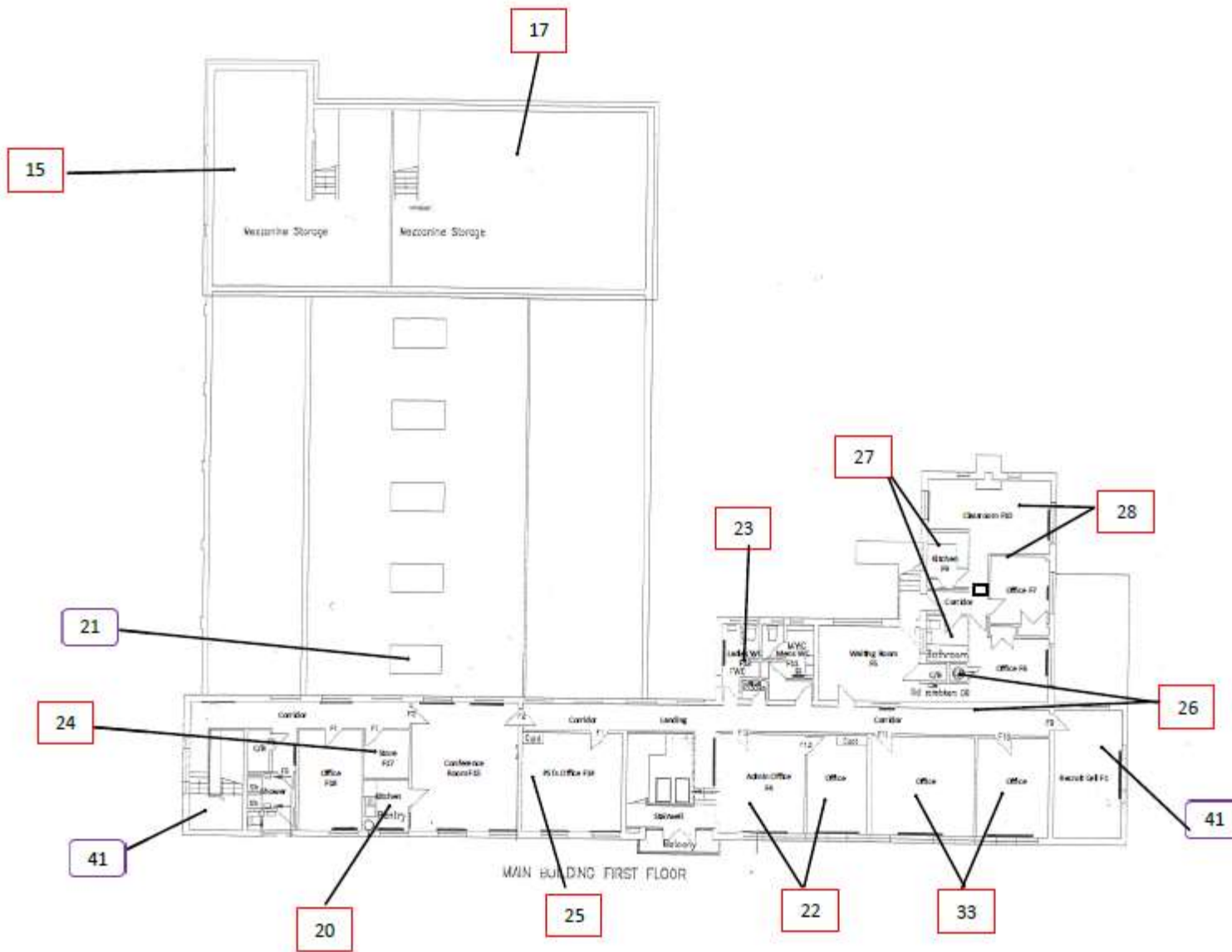


Key	
	Visual Inspection
	Asbestos Detected (Positive Result)
	No Asbestos Detected (Negative Result)
	Presumed to Contain Asbestos
	Strongly Presumed to Contain Asbestos
	No Access

Document Name	Author	Issued by	Revision Number	Issue Date	Page No
2021	David Kelly	Armour AS	0	22/02/2021	58



Document Name	Author	Issued by	Revision Number	Issue Date	Page No
2021	David Kelly	Armour AS	0	22/02/2021	59



Key	
	Visual Inspection
	Asbestos Detected (Positive Item)
	No Asbestos Detected (Negative Item)
	Presumed to Contain Asbestos
	Strongly Presumed to Contain Asbestos
	No Access

Document Name	Author	Issued by	Revision Number	Issue Date	Page No
2021	David Kelly	Armour AS	0	22/02/2021	60



I the surveyor can confirm that this report is accurate to my findings onsite and this survey has been Content checked by myself.

Checked by: Will Fyles

Date: 22/02/2021

I the Admin Manager can confirm that this report is accurate to the paperwork received and this survey has been quality checked by myself.

Checked by: Kacey Lillis

Date: 19/02/2021

Report Compiled By

Armour Analytical Services Ltd, Admirals Yard, Station Road, Bristol, BS34 6LR

Document Name	Author	Issued by	Revision Number	Issue Date	Page No
2021	David Kelly	Armour AS	0	22/02/2021	61